

Houston Pilots Forecast Package



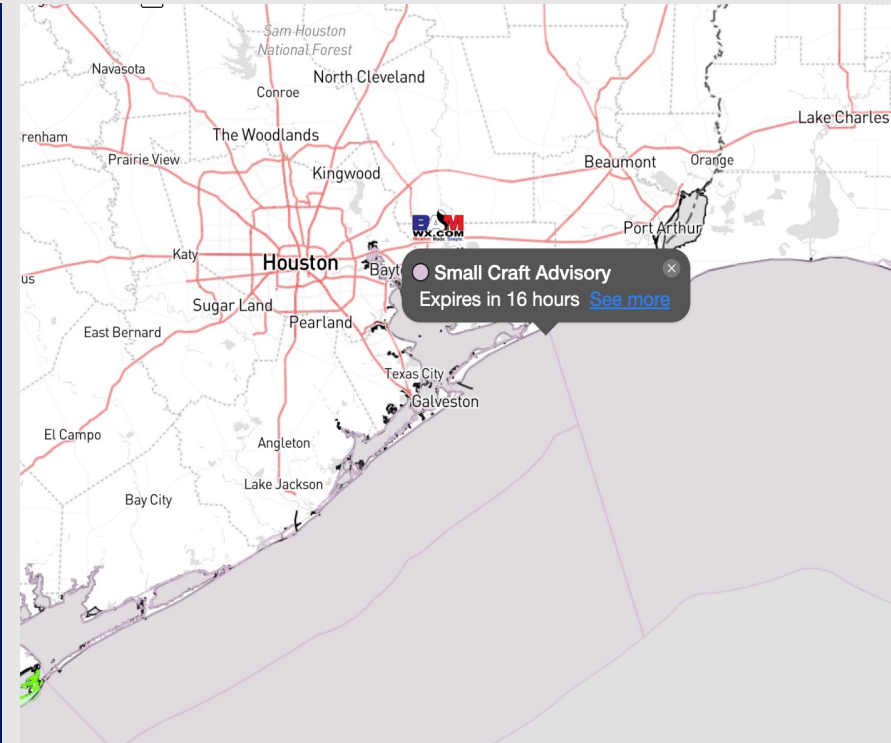
Updated: 1:55 PM CT

Saturday, December 16, 2023

Forecaster: Will Danby

Weather Headlines

- Winds will continue to decline this afternoon, with wind speeds remaining less than 20 kts sustained beyond 10 AM tomorrow AM
- **Wave heights will continue to decrease through the evening however will not be back to below 3 ft until ~3 AM Sunday.**
- Not favoring any visibility issues over the coming days for fog.



Radar/NWS Alerts: 1:52 PM CT

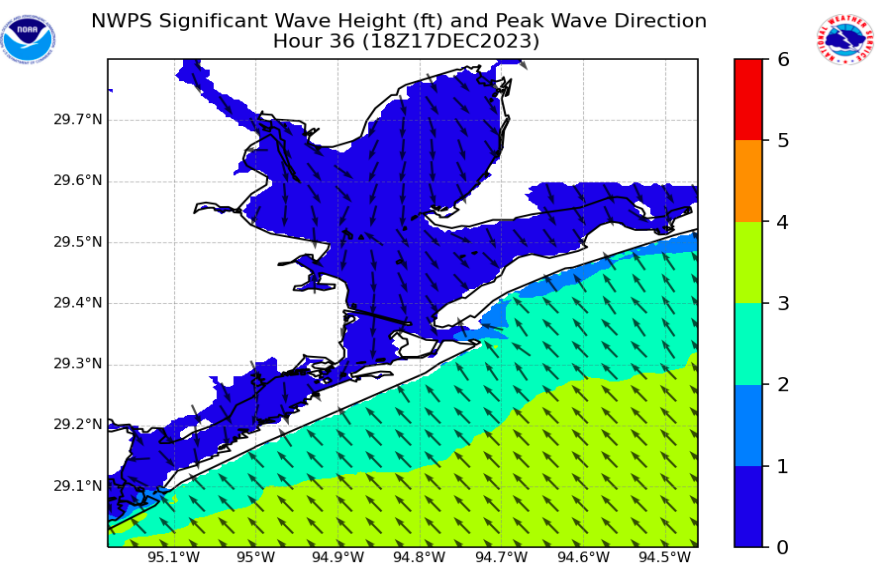
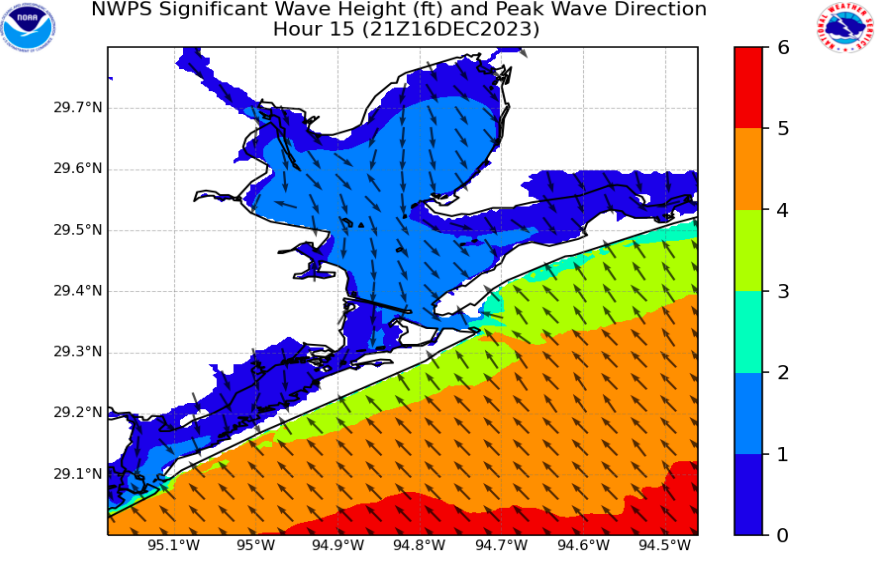


As always, please do not hesitate to reach out to us with any forecast questions via the chat option on the Weather Porthole or our on-call number, **(317)-560-8122** press 1 for forecast questions.

Houston Pilots Wave Height Update



Significant Wave Height Image



With the gradual decline in wind speeds this afternoon, wave heights will also diminish. Current heights of 4 -5 feet will be short term through 6 PM CT this evening.

After 6 PM, heights of 3 -4 Feet will continue until 12 PM CT SUN. Calmer waters (3 ft or less waves) can be anticipated into the afternoon Sunday.

Houston Pilots Extended Range Visibility Report



Tuesday 12/19/23

No fog concerns for Tuesday at this time.



Thursday 12/21/23

The same situation as WED– would need to monitor low level saturation, but this day would have a higher chance than Wednesday for sea fog.



Wednesday 12/20/23

Would at the earliest keep an eye on Wednesday AM for sea fog. There is a stable atmosphere in place, but limited low level moisture is the only hindrance at this time.



Chance for Fog

Tuesday AM	Unlikely
Tuesday PM	Unlikely
Wednesday AM	Low - End
Wednesday PM	Unlikely
Thursday AM	Possible
Thursday PM	Unlikely

Houston Pilots Visibility Chart (miles)



Forecast Confidence

Above Normal

Below Normal

Time	Sat 1pm	Sat 2pm	Sat 3pm	Sat 4pm	Sat 5pm	Sat 6pm	Sat 7pm	Sat 8pm	Sat 9pm	Sat 10pm	Sat 11pm	Sun 12am	Sun 1am	Sun 2am	Sun 3am	Sun 4am	Sun 5am	Sun 6am	Sun 7am	Sun 8am	Sun 9am	Sun 10am	Sun 11am	Sun 12pm	Sun 1pm	Sun 2pm	Sun 3pm	Sun 4pm	Sun 5pm	Sun 6pm	Sun 7pm	Sun 8pm	Sun 9pm	Sun 10pm	Sun 11pm	Mon 12am		
610 Bridge	10	10	10	10	10	10	10	10	10	10	10	10	10	10	10	10	10	10	10	10	10	10	10	10	10	10	10	10	10	10	10	10	10	10	10	10	10	10
Kinder 1	10	10	10	10	10	10	10	10	10	10	10	10	10	10	10	10	10	10	10	10	10	10	10	10	10	10	10	10	10	10	10	10	10	10	10	10	10	10
Greens Bayou	10	10	10	10	10	10	10	10	10	10	10	10	10	10	10	10	10	10	10	10	10	10	10	10	10	10	10	10	10	10	10	10	10	10	10	10	10	10
Shell Crude	10	10	10	10	10	10	10	10	10	10	10	10	10	10	10	10	10	10	10	10	10	10	10	10	10	10	10	10	10	10	10	10	10	10	10	10	10	10
Lynchburg Ferries	10	10	10	10	10	10	10	10	10	10	10	10	10	10	10	10	10	10	10	10	10	10	10	10	10	10	10	10	10	10	10	10	10	10	10	10	10	10
Exxon 3	10	10	10	10	10	10	10	10	10	10	10	10	10	10	10	10	10	10	10	10	10	10	10	10	10	10	10	10	10	10	10	10	10	10	10	10	10	10
Morgans Point	10	10	10	10	10	10	10	10	10	10	10	10	10	10	10	10	10	10	10	10	10	10	10	10	10	10	10	10	10	10	10	10	10	10	10	10	10	10
75/76	10	10	10	10	10	10	10	10	10	10	10	10	10	10	10	10	10	10	10	10	10	10	10	10	10	10	10	10	10	10	10	10	10	10	10	10	10	10
63/64	10	10	10	10	10	10	10	10	10	10	10	10	10	10	10	10	10	10	10	10	10	10	10	10	10	10	10	10	10	10	10	10	10	10	10	10	10	10
51/52	10	10	10	10	10	10	10	10	10	10	10	10	10	10	10	10	10	10	10	10	10	10	10	10	10	10	10	10	10	10	10	10	10	10	10	10	10	10
37/38	10	10	10	10	10	10	10	10	10	10	10	10	10	10	10	10	10	10	10	10	10	10	10	10	10	10	10	10	10	10	10	10	10	10	10	10	10	10
25/26	10	10	10	10	10	10	10	10	10	10	10	10	10	10	10	10	10	10	10	10	10	10	10	10	10	10	10	10	10	10	10	10	10	10	10	10	10	10
11/12	10	10	10	10	10	10	10	10	10	10	10	10	10	10	10	10	10	10	10	10	10	10	10	10	10	10	10	10	10	10	10	10	10	10	10	10	10	10
1 & 2 Bravo	10	10	10	10	10	10	10	10	10	10	10	10	10	10	10	10	10	10	10	10	10	10	10	10	10	10	10	10	10	10	10	10	10	10	10	10	10	10

NOTE: This is automated data that may/may not agree with the official BAM thinking that's found on the daily slides or special visibility report slides. This data should be used as a guide only

Houston Pilots Wind Chart



Forecast Confidence



Example

Sustained wind 13 Knots
Gusts 18 Knots
Wind from the N

WS: 13
G:18
N

Time	Sat 1pm	Sat 2pm	Sat 3pm	Sat 4pm	Sat 5pm	Sat 6pm	Sat 7pm	Sat 8pm	Sat 9pm	Sat 10pm	Sat 11pm	Sun 12am	Sun 1am	Sun 2am	Sun 3am	Sun 4am	Sun 5am	Sun 6am	Sun 7am	Sun 8am	Sun 9am	Sun 10am	Sun 11am	Sun 12pm	Sun 1pm	Sun 2pm	Sun 3pm	Sun 4pm	Sun 5pm	Sun 6pm	Sun 7pm	Sun 8pm	Sun 9pm	Sun 10pm	Sun 11pm	Mon 12am		
610 Bridge	10 16	9 13	9 14	9 15	7 16	5 13	6 14	5 11	4 10	4 11	4 10	3 9	3 9	3 9	3 9	4 6	4 5	3 5	3 5	4 5	4 7	4 6	4 6	4 5	4 5	4 7	4 6	4 6	4 5	3 5	2 3	2 3	2 3	2 3	2 3	2 3	2 3	
Kinder 1	10 16	9 13	9 14	9 15	7 16	5 13	6 14	4 10	3 10	4 11	4 10	3 9	3 9	3 9	3 9	4 6	4 5	3 5	3 5	4 5	4 7	4 6	4 6	4 5	4 5	4 7	4 6	4 6	4 5	3 5	2 3	2 3	2 3	2 3	2 3	2 3	2 3	
Greens Bayou	10 15	9 13	9 14	9 15	7 16	5 12	6 14	4 10	3 10	4 11	4 10	3 9	3 9	3 9	3 8	4 6	4 5	3 5	3 5	4 5	4 7	4 6	4 6	4 5	4 5	4 7	4 6	4 6	4 5	3 5	2 3	2 3	2 3	2 3	2 3	2 3	2 3	
Shell Crude	10 15	9 13	9 14	9 15	7 16	5 13	6 14	4 10	3 10	4 11	4 10	3 9	3 9	3 9	3 8	4 6	4 5	3 5	3 5	4 5	4 7	4 6	4 6	4 5	4 5	4 7	4 6	4 6	4 5	3 5	2 3	2 3	2 3	2 3	2 3	2 3	2 3	
Lynchburg Ferries	10 15	9 13	9 14	9 15	7 16	5 12	6 13	4 10	3 10	4 10	4 10	3 9	3 8	3 8	3 8	4 6	4 6	3 6	3 6	4 6	4 7	4 6	4 6	4 5	4 5	4 7	4 6	4 6	4 5	3 5	2 3	2 3	2 3	2 3	2 3	2 3	2 3	
Exxon 3	10 16	9 13	9 14	9 16	7 16	6 14	5 13	4 11	3 11	4 10	4 10	3 9	3 8	3 8	3 7	4 6	4 6	3 6	3 6	5 6	5 7	5 6	5 6	5 6	5 7	5 6	5 7	5 6	5 6	4 5	3 4	3 4	3 4	3 4	3 4	3 4	3 4	3 4
Morgans Point	10 17	9 13	9 14	9 16	7 16	6 14	5 12	4 10	3 11	4 11	4 10	3 9	3 9	3 9	3 8	4 6	4 6	3 6	3 6	6 6	6 7	6 6	6 6	5 5	5 5	5 7	5 6	5 6	5 6	4 5	3 4	3 4	3 4	3 4	3 4	3 4	3 4	3 4
75/76	12 17	9 13	10 15	10 16	11 18	10 18	10 16	9 13	9 13	10 14	10 13	8 12	8 11	7 10	7 10	9 8	9 8	8 8	8 8	8 8	8 8	7 8	6 8	5 8	5 8	5 8	5 8	6 8	6 7	6 5	4 4	4 4	4 4	4 4	4 4	4 4	4 4	4 4
63/64	13 17	10 14	11 16	11 16	12 18	12 18	12 16	11 15	11 15	12 16	12 14	10 13	9 12	9 11	10 11	10 11	10 11	10 11	10 11	9 10	9 10	9 10	9 10	8 9	8 8	8 8	8 7	8 7	8 6	6 5	4 4	4 4	4 4	4 4	4 4	4 4	4 4	4 4
51/52	12 17	11 16	11 16	12 17	13 19	13 19	12 18	12 16	11 16	12 16	12 15	11 14	10 13	9 13	10 13	10 11	10 11	10 11	10 11	9 10	9 10	9 10	9 10	8 9	8 8	7 8	7 7	6 7	5 5	4 4	3 3	3 3	3 3	3 3	3 3	3 3	3 3	3 3
37/38	13 18	12 17	12 16	13 17	14 20	14 20	13 18	12 16	11 16	12 16	12 15	11 14	11 13	10 12	10 11	10 11	10 11	10 11	10 11	9 10	9 10	9 10	9 10	8 9	8 8	7 8	7 7	6 5	5 4	4 4	4 4	4 4	4 4	4 4	4 4	4 4	4 4	4 4
25/26	14 19	13 17	12 17	13 18	15 20	14 21	13 19	12 16	10 16	10 16	10 15	10 15	9 14	9 14	10 14	9 14	9 14	9 14	9 14	9 14	9 14	8 14	8 14	7 14	7 14	6 14	6 14	5 14	4 14	3 14	3 14	3 14	3 14	3 14	3 14	3 14	3 14	
11/12	14 19	13 17	13 17	13 18	14 21	14 21	12 19	12 17	11 17	12 17	12 16	11 15	9 14	9 14	10 14	10 14	10 14	10 14	10 14	9 14	9 14	9 14	9 14	8 14	8 14	7 14	7 14	6 14	5 14	4 14	3 14	3 14	3 14	3 14	3 14	3 14	3 14	3 14
1 & 2 Bravo	14 17	15 15	15 15	15 18	17 21	16 21	15 21	15 21	14 19	14 19	14 19	13 18	13 17	12 16	12 15	13 14	13 14	13 14	13 14	12 13	12 13	11 13	10 13	8 13	8 13	7 13	7 13	6 13	5 13	4 13	4 13	4 13	4 13	4 13	4 13	4 13	4 13	4 13

NOTE: This is automated data that may/may not agree with the official BAM thinking that's found on the daily slides or special visibility report slides. This data should be used as a guide only

Houston Pilots: Sat. 12/16/2023



Forecast Discussion

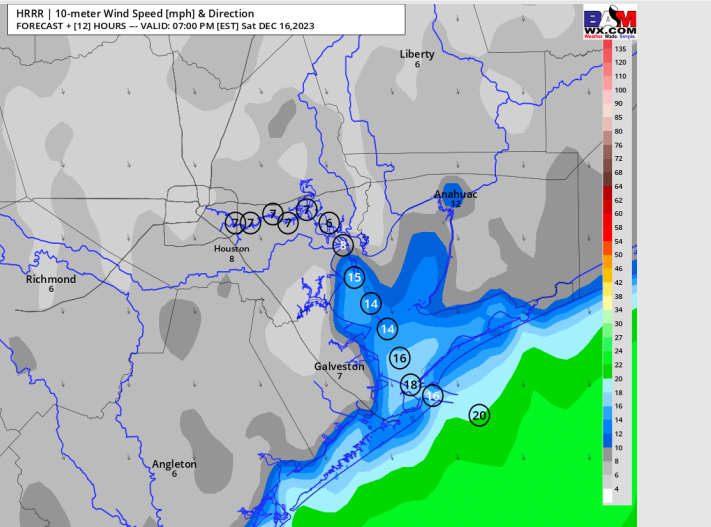
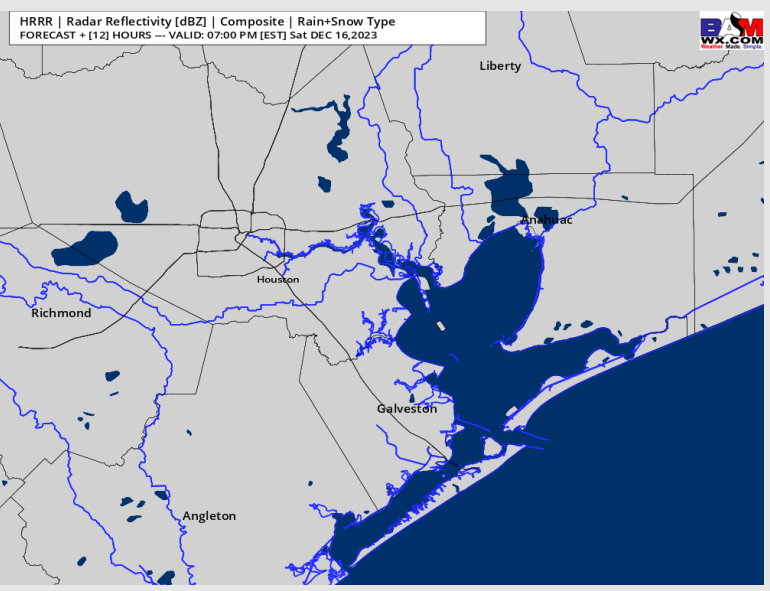
Precip: With the frontal passage late this AM, conditions will be dry into the afternoon.

Wind: Sustained winds will be from the NNW this afternoon and overnight. **N Morgan's Point:** 8 - 13 kts prior to 6 PM. After 6 PM winds calm to 3 - 7 kts. **S of Morgan's Point:** 14 - 19 kts for the afternoon and into the early hours of Sunday. Winds at 11/12 and the Boarding Station a touch higher at 17 - 22 kts. **Wind gusts of up to 22 kts prior to 4 PM North of Morgan's Point.** Wind gusts of up to 23 - 25 kts will be possible south of Morgan's throughout the entirety of the day.

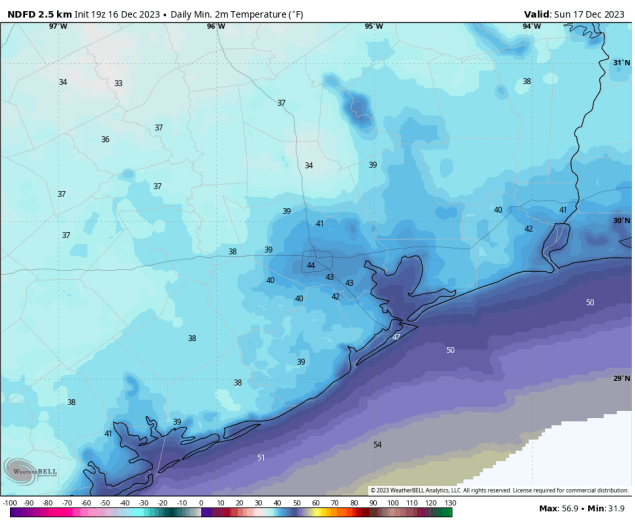
Low Temps: **N of Morgan's Point:** Mid 40s F. **S of Morgan's Point:** Upper 40s F. Temps closer to 50 F near the Boarding Station.

Visibility: Not anticipating any visibility concerns

Precip Image: 6 PM CT



**Wind Speed:
6 PM CT**



**Low Temps
Sunday AM**

Houston Pilots: Sun. 12/17/2023



Forecast Discussion

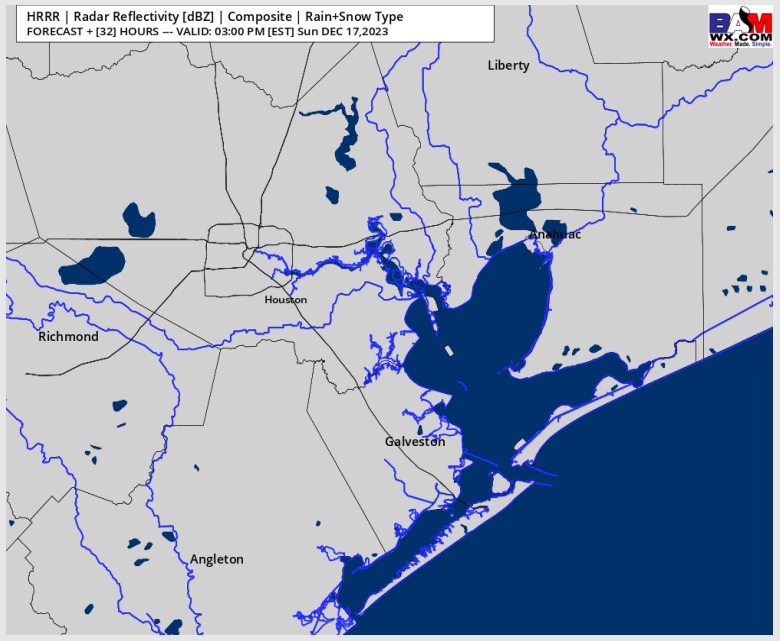
Precip: Dry conditions continue into Sunday

Wind: Winds will remain out of the NNW for the entire day SUN. As winds calm in the evening, they will become more variable in direction with favorability from the west. **N of Morgan's Point:** Winds will be 3 -7 kts for the entire day. **S of Morgan's Point:** Winds at 15 - 20 kts through 4 AM. Winds then begin a slow declining trend, with speeds of 8 - 13 kts by 10 AM, and near -calm winds by 4 PM at 3 - 7kts. Winds at the Boarding Station follow the same progression of weakening trend, but wind speeds are higher by a factor of 2 kts (starting at 17 - 21 kts and settling at 5 - 9 kts by 4 PM). **Gusts will decrease to <20 kts at 11/12 and the Boarding Station by 8 AM.**

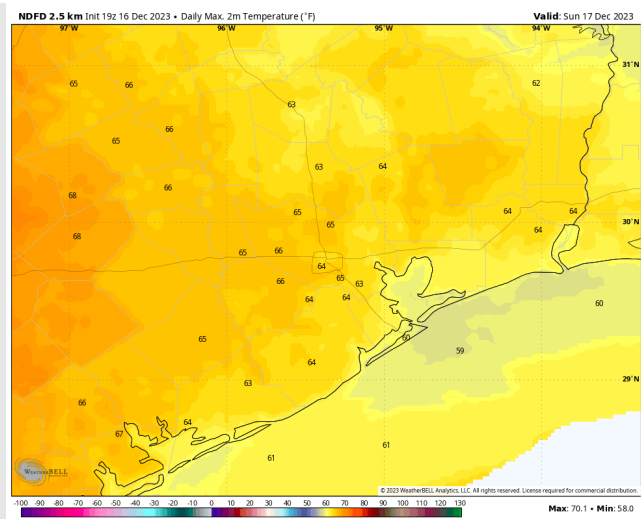
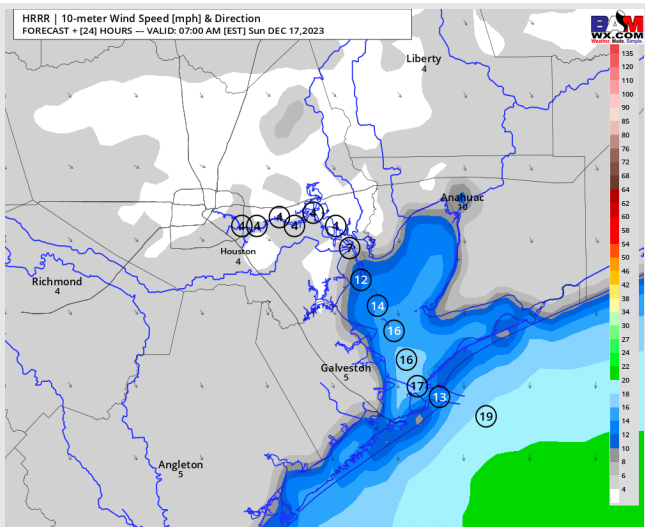
High Temps: **N of Morgan's Point:** Mid 60s F. **S of Morgan's Point:** Upper 50s F to 60 F.

Visibility: Not anticipating any visibility concerns Sunday.

Precip Image: 2 PM CT



Wind Speed: 6 AM CT



High Temps Sunday

Forecast Discussion

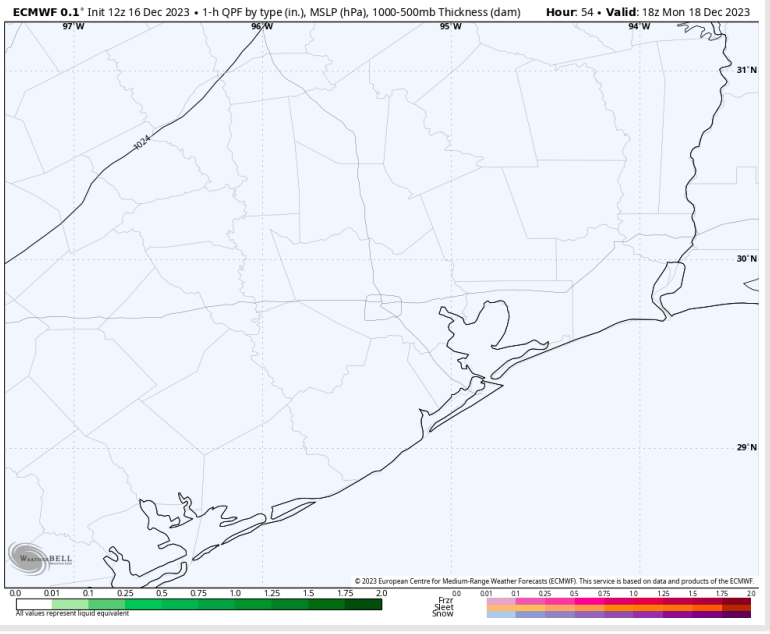
Precip: Dry conditions favored for Monday.

Wind: Winds will be out of the W/WNW in the AM, shifting/settling from the NNW by 10 AM. Winds will be from the North finally towards 10 PM. **N of Morgan's Point:** Outside of 2 - 5 PM, with speeds of 5 - 10 kts Winds will be 3 - 8 kts for the entire day. **S of Morgan's Point:** 5 - 10 kts north of the Boarding Station, and 7 - 12 kts at the Boarding Station. Winds uptick to 9 - 14 kts at the Boarding Station by 10 PM.

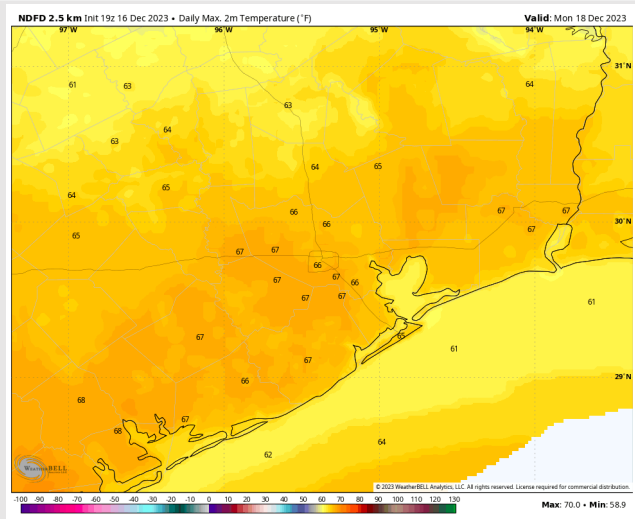
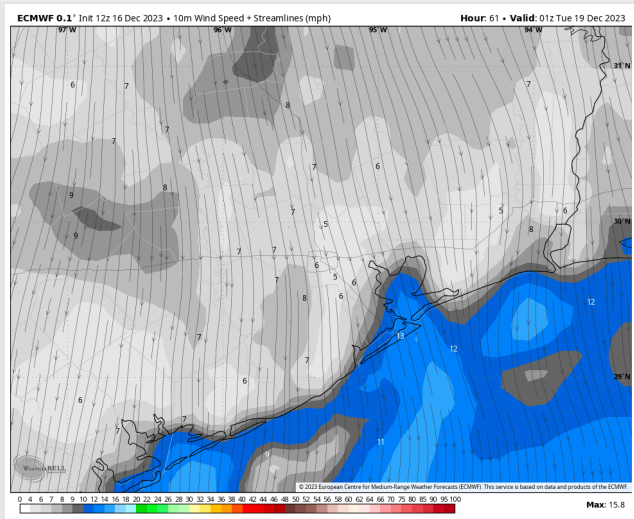
High Temps: **N of Morgan's Point:** Mid 60s F. **S of Morgan's Point:** Low 60s F.

Visibility: Not favoring any fog concerns at this time.

Precip Image: 12 PM CT

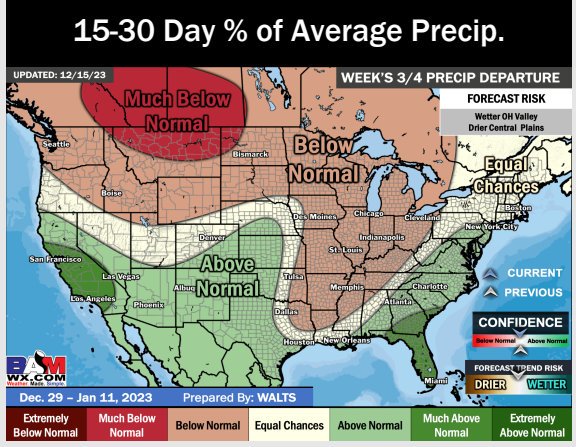
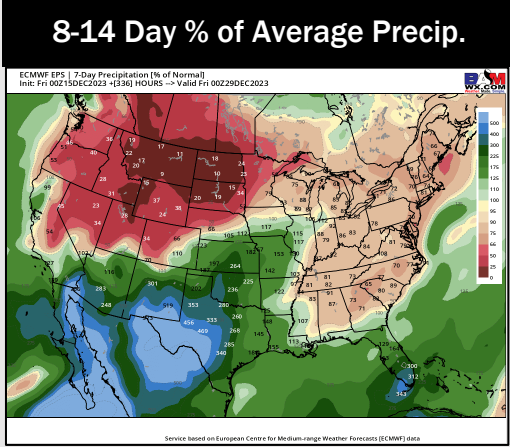
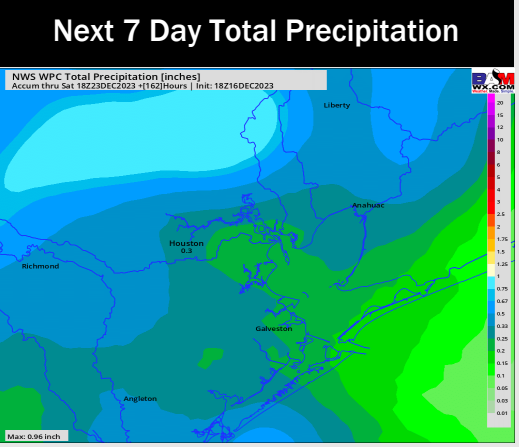
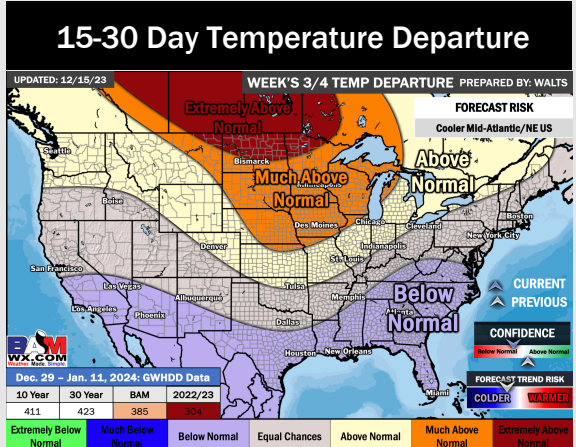
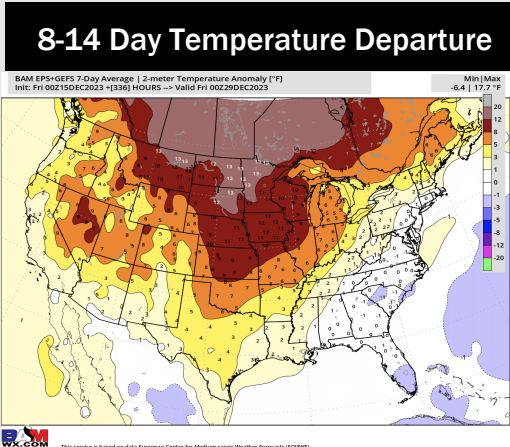
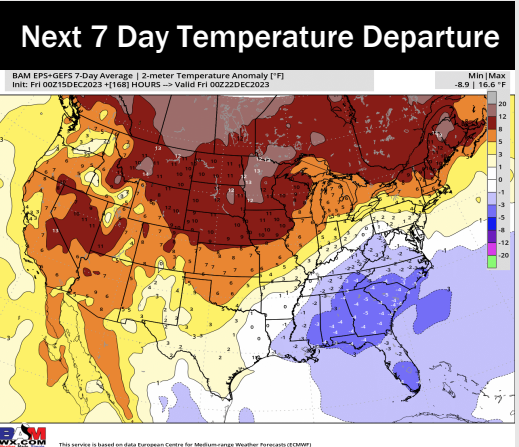


Wind Speed:
7 PM CT



High Temps
Monday

Houston Pilots: 12/16/23



- After rain chances with a front for the AM hours today, the next best shot for rain will occur THU/FRI and into the weekend. Seasonable temps are favored this week.
- Above normal precipitation chances and slightly above normal temperatures are expected into the week 2 timeframe.
- Below normal temperatures and slightly above normal chances for precipitation are favored in the weeks ¾ timeframe.