

# Houston Pilots Forecast Package



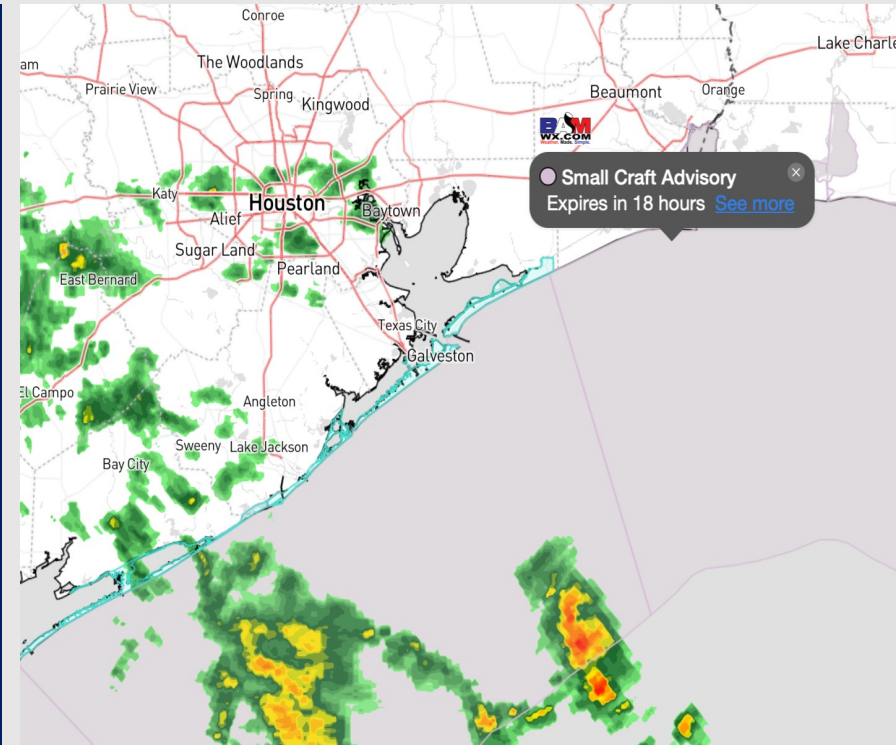
Updated: 1:00 PM CT

Friday, December 15, 2023

Forecaster: Alyssa Elliott

## Weather Headlines

- Sustained winds are continuing to decrease throughout the afternoon however gusts of 25 – 30 kts will remain a risk through the rest of the evening. **Wave heights will continue to decrease through the evening however will not be back to below 3 ft until ~12 AM Sunday.**
- A few localized chances of drizzle / light showers before arrival of heavy rain / storm chances associated with a front this Evening.
- Not favoring any visibility issues over the coming days for fog.



**Radar/NWS Alerts: 12:25 PM CT**

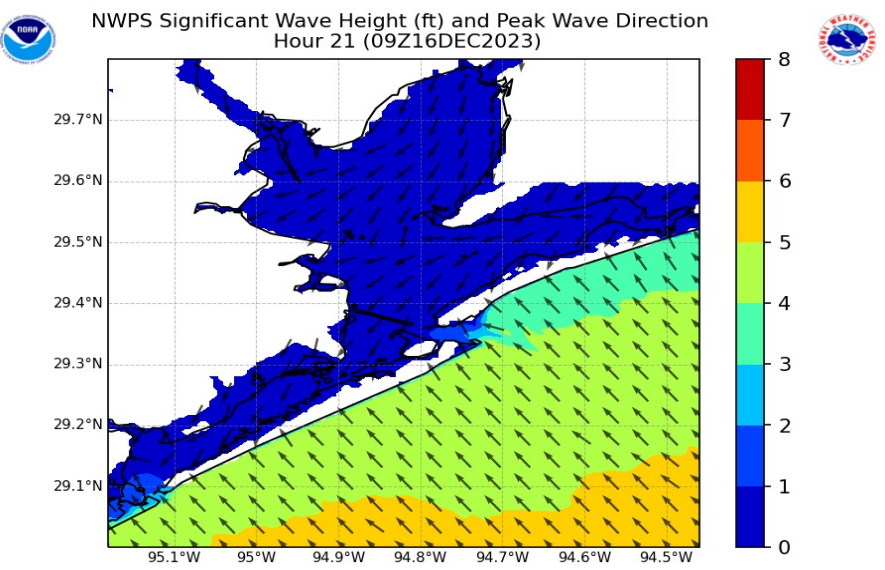
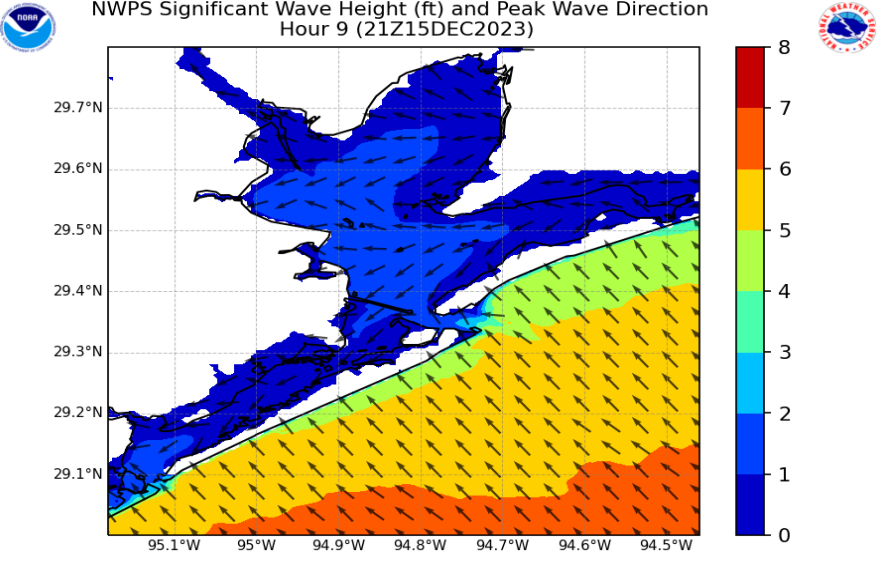


As always, please do not hesitate to reach out to us with any forecast questions via the chat option on the Weather Porthole or our on-call number, **(317)-560-8122** press 1 for forecast questions.

# Houston Pilots Wave Height Update



## Significant Wave Height Image



The top image shows wave heights around 3 PM CT today. Max wave heights for the Boarding Station and 11/12 of 4 - 6 ft will continue through the evening as winds in the Gulf are still out of the SE however gradually calming down.

The bottom images shows wave heights around 3 AM CT Saturday morning. Wave heights for the Boarding Station and 11/12 will drop to 3 - 5 ft, but will continue to linger above 3 ft through ~ 12 AM Sunday.

# Houston Pilots Extended Range Visibility Report



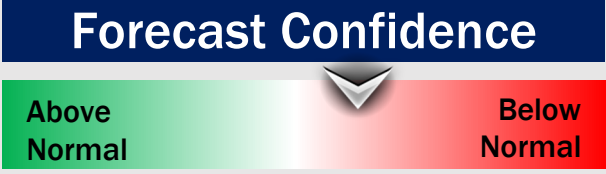
## Monday 12/18/23

No fog concerns for Monday at this time.



## Tuesday 12/19/23

No fog concerns for Tuesday at this time.



## Wednesday 12/20/23

No fog concerns for Wednesday at this time.



## Chance for Fog

Monday AM	Unlikely
Monday PM	Unlikely
Tuesday AM	Unlikely
Tuesday PM	Unlikely
Wednesday AM	Unlikely
Wednesday PM	Unlikely

# Houston Pilots Visibility Chart (miles)



## Forecast Confidence



Time	Fri 12pm	Fri 1pm	Fri 2pm	Fri 3pm	Fri 4pm	Fri 5pm	Fri 6pm	Fri 7pm	Fri 8pm	Fri 9pm	Fri 10pm	Fri 11pm	Sat 12am	Sat 1am	Sat 2am	Sat 3am	Sat 4am	Sat 5am	Sat 6am	Sat 7am	Sat 8am	Sat 9am	Sat 10am	Sat 11am	Sat 12pm	Sat 1pm	Sat 2pm	Sat 3pm	Sat 4pm	Sat 5pm	Sat 6pm	Sat 7pm	Sat 8pm	Sat 9pm	Sat 10pm	Sat 11pm		
610 Bridge	10	10	10	10	10	10	10	10	7	6	5	4	4	4	4	4	6	9	10	10	10	10	10	10	10	10	10	10	10	10	10	10	10	10	10	10	10	10
Kinder 1	10	10	10	10	10	10	10	10	7	6	5	4	4	4	4	4	6	9	10	10	10	10	10	10	10	10	10	10	10	10	10	10	10	10	10	10	10	10
Greens Bayou	10	10	10	10	10	10	10	10	7	6	5	4	4	4	4	4	6	9	10	10	10	10	10	10	10	10	10	10	10	10	10	10	10	10	10	10	10	10
Shell Crude	10	10	10	10	10	10	10	10	7	6	6	5	5	4	4	4	6	9	10	10	10	10	10	10	10	10	10	10	10	10	10	10	10	10	10	10	10	10
Lynchburg Ferries	10	10	10	10	10	10	10	10	7	6	6	5	5	4	4	4	6	9	10	10	10	10	10	10	10	10	10	10	10	10	10	10	10	10	10	10	10	10
Exxon 3	10	10	10	10	10	10	10	10	7	6	6	6	5	4	4	4	7	7	10	10	10	10	10	10	10	10	10	10	10	10	10	10	10	10	10	10	10	10
Morgans Point	10	10	10	10	10	10	10	10	7	6	6	6	5	4	4	4	8	7	10	10	10	10	10	10	10	10	10	10	10	10	10	10	10	10	10	10	10	10
75/76	10	10	10	10	10	10	10	9	7	6	6	6	5	4	4	4	8	6	10	10	10	10	10	10	10	10	10	10	10	10	10	10	10	10	10	10	10	10
63/64	10	10	10	10	10	10	10	9	7	6	6	6	5	4	4	4	8	6	10	10	10	10	10	10	10	10	10	10	10	10	10	10	10	10	10	10	10	10
51/52	9	9	10	9	8	8	8	8	7	6	6	6	5	4	4	4	8	6	8	9	9	9	9	9	10	10	10	10	10	10	10	10	10	10	10	10	10	10
37/38	8	8	8	7	6	6	6	7	7	6	6	6	6	4	4	4	8	5	7	7	9	9	9	9	10	10	10	10	10	10	10	10	10	10	10	10	10	10
25/26	7	7	6	6	6	6	6	7	6	6	6	6	6	5	4	4	8	4	6	7	9	9	9	9	10	10	10	10	10	10	10	10	10	10	10	10	10	10
11/12	6	6	6	6	6	6	6	6	6	6	6	6	6	5	4	4	8	4	4	6	7	9	9	9	9	10	10	10	10	10	10	10	10	10	10	10	10	10
1 & 2 Bravo	6	6	6	6	6	6	6	6	6	6	6	6	6	5	5	4	8	5	3	4	4	8	9	9	9	9	9	9	9	9	9	9	9	9	9	9	9	9

**NOTE: This is automated data that may/may not agree with the official BAM thinking that's found on the daily slides or special visibility report slides. This data should be used as a guide only**

# Houston Pilots Wind Chart



## Forecast Confidence



## Example

Sustained wind 13 Knots  
Gusts 18 Knots  
Wind from the N

WS: 13  
G:18  
N

Time Knots	Fri 12pm	Fri 1pm	Fri 2pm	Fri 3pm	Fri 4pm	Fri 5pm	Fri 6pm	Fri 7pm	Fri 8pm	Fri 9pm	Fri 10pm	Fri 11pm	Sat 12am	Sat 1am	Sat 2am	Sat 3am	Sat 4am	Sat 5am	Sat 6am	Sat 7am	Sat 8am	Sat 9am	Sat 10am	Sat 11am	Sat 12pm	Sat 1pm	Sat 2pm	Sat 3pm	Sat 4pm	Sat 5pm	Sat 6pm	Sat 7pm	Sat 8pm	Sat 9pm	Sat 10pm	Sat 11pm	
610 Bridge	7	8	8	7	6	5	5	5	6	6	2	4	2	5	6	6	7	8	9	10	9	10	10	10	10	10	10	10	10	10	9	9	9	8	7		
	16	16	16	14	13	14	14	16	17	16	10	12	10	9	10	9	10	12	14	15	15	15	15	15	15	15	15	14	14	14	15	14	14	13	13	12	11
Kinder 1	7	8	8	7	6	5	5	4	5	6	3	3	2	5	6	6	6	8	9	9	9	9	10	10	10	10	10	9	9	10	9	9	8	8	7		
	16	16	16	14	13	15	14	15	16	15	10	12	10	9	10	8	10	12	13	14	14	14	15	14	15	14	15	14	14	15	14	14	13	13	12	11	
Greens Bayou	7	8	7	6	6	6	5	4	5	6	3	2	2	5	6	6	7	9	9	9	9	10	10	10	10	10	9	9	10	9	9	8	8	7			
	16	15	15	14	13	15	15	14	15	13	11	10	9	9	10	8	9	11	13	14	14	14	15	14	15	14	15	14	14	15	14	13	13	13	12	10	
Shell Crude	8	8	7	6	6	5	5	4	5	6	4	3	2	4	6	5	6	7	9	9	9	9	10	10	10	10	10	10	10	10	9	9	8	8	7		
	16	16	15	15	14	14	15	13	15	13	12	10	9	8	11	8	9	11	13	13	14	14	14	14	14	14	14	14	14	15	14	14	13	12	13	12	10
Lynchburg Ferries	8	7	7	6	6	5	4	4	5	6	4	2	2	4	7	6	7	8	9	9	9	10	10	10	10	11	10	10	11	11	11	10	9	9	8	7	
	16	15	14	14	14	14	15	14	14	13	12	10	8	7	11	8	9	11	13	13	13	14	14	14	14	14	14	14	14	15	14	13	13	12	13	12	10
Exxon 3	8	8	7	7	5	4	4	3	4	4	4	2	4	7	6	7	8	9	9	10	10	10	10	10	10	11	10	11	11	11	11	10	10	9	8	7	
	15	15	14	15	14	13	14	12	12	12	12	11	8	6	12	8	10	11	13	13	13	14	14	14	14	15	14	15	15	15	14	13	12	13	11	10	
Morgans Point	6	7	7	7	4	3	4	3	4	5	5	3	3	7	6	8	9	11	11	11	11	11	11	11	11	11	12	12	13	12	11	11	10	10	9	9	
	15	15	16	16	13	12	12	10	11	12	13	11	10	6	12	8	10	12	14	14	14	14	14	14	14	14	15	15	16	16	16	15	14	13	12	11	
75/76	4	6	8	8	3	2	3	3	3	5	7	5	4	3	8	8	10	12	13	13	13	13	13	13	13	12	13	13	13	13	15	15	14	13	12	11	
	16	17	17	16	13	11	10	9	14	15	13	11	7	11	9	11	13	15	15	15	15	15	15	15	15	15	16	16	16	17	17	16	15	14	14	13	
63/64	6	8	9	9	5	2	2	3	4	6	8	7	6	3	9	8	10	12	14	14	14	15	14	13	13	13	13	14	14	15	16	16	15	14	14	13	13
	18	17	18	18	15	12	11	11	10	14	15	15	12	9	10	9	11	13	15	16	16	16	15	15	15	16	16	16	17	17	16	16	15	15	15	14	
51/52	9	8	10	10	8	5	4	5	6	7	8	8	7	5	8	8	9	11	13	14	14	14	14	14	13	13	14	14	13	14	15	15	14	14	14	13	13
	19	17	18	19	17	14	13	12	12	13	16	16	13	12	8	9	10	12	15	15	16	16	16	15	16	16	16	16	16	17	17	16	16	15	14	14	
37/38	10	9	10	10	9	7	6	6	7	6	8	7	7	6	6	7	9	11	13	13	14	15	15	14	14	14	14	14	14	14	15	15	14	14	13	13	
	20	18	18	18	15	14	13	13	13	13	16	16	13	13	9	8	10	12	14	15	16	16	16	16	16	16	16	16	16	16	16	16	16	15	15	14	
25/26	12	10	11	10	11	8	7	7	7	7	8	8	7	6	6	6	8	10	11	12	13	14	14	14	14	14	14	14	14	13	14	14	13	13	12	12	
	21	19	19	18	20	16	14	13	13	13	16	16	13	13	11	8	10	12	14	15	16	16	16	16	16	16	16	16	16	16	16	16	15	15	14	14	
11/12	12	12	12	11	13	9	8	8	7	7	9	9	8	8	7	6	8	10	11	12	13	14	14	14	13	14	14	14	13	14	14	14	14	13	13	12	
	21	21	20	19	21	18	14	14	13	13	16	16	13	14	13	8	10	12	14	15	16	16	16	16	16	16	16	16	16	16	16	16	15	15	14	14	
1 & 2 Bravo	14	15	13	12	13	13	11	9	7	8	10	11	9	9	9	8	10	12	13	14	15	16	16	16	15	15	15	15	16	17	17	17	17	16	16	15	
	22	22	21	20	20	20	16	15	13	15	17	17	14	14	15	9	11	13	14	16	17	18	17	18	17	17	17	17	17	18	18	18	18	18	18	17	17

NOTE: This is automated data that may/may not agree with the official BAM reporting that's found on the daily slides or special visibility report slides. This data should be used as a guide only



# Houston Pilots: Fri. 12/15/2023



## Forecast Discussion

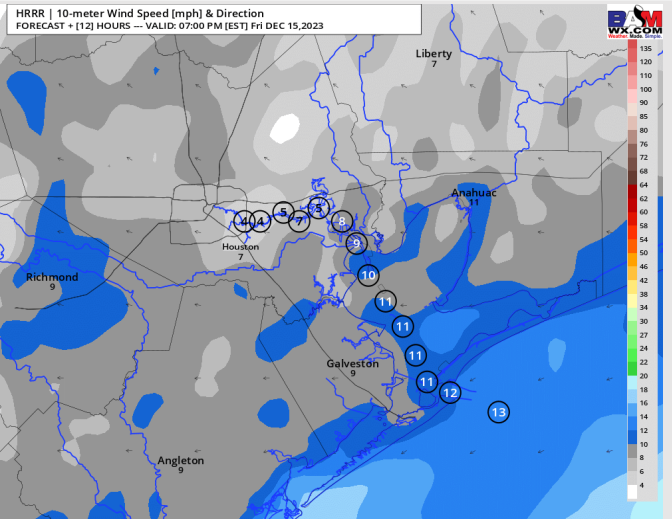
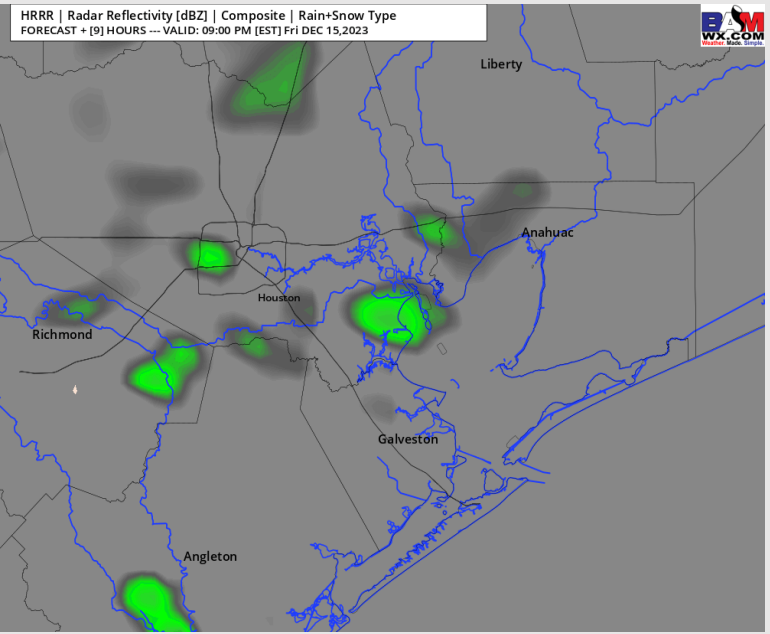
**Precip:** Scattered (20%) pockets of light to at times moderate rain will hang around the area throughout the rest of the afternoon. Timeframe with the best opportunity for increased coverage (40%) will begin after 4 PM-CT through about 9 PM, then taper off before the main line of activity moves in after midnight Saturday.

**Wind:** Winds will continue to remain out of the E through 10PM before becoming variable just prior to arrival of front. **N of Morgan's Point:** Winds will be 4-9 kts for the rest of the evening. **S of Morgan's Point:** 10 - 15 kts for the rest of the day, with winds of 13-18 kts at 11/12 and the Boarding Station. **Gusts of 25 - 30 kts will continue to be a risk throughout the rest of the evening with stations S. of Morgan's Point being at the greatest risk for the higher end of that gust range.**

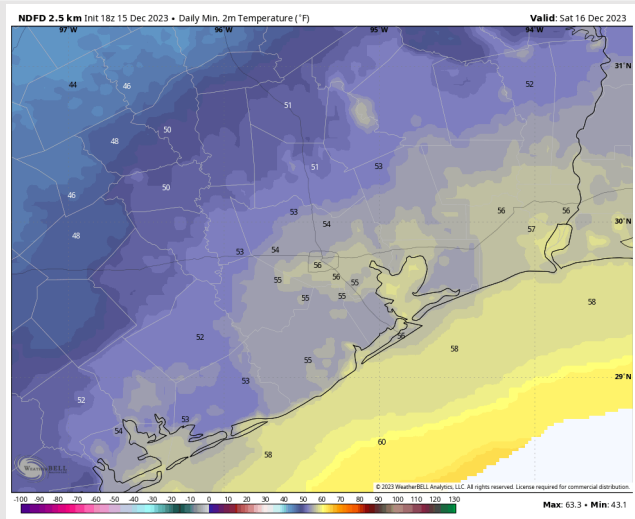
**Low Temps:** **N of Morgan's Point:** Mid 50s F. **S of Morgan's Point:** Mid to Upper 50s F.

**Visibility:** Not favoring any fog concerns at this time.

## Precip Image: 8 PM CT



**Wind Speed:  
6 PM CT**



**Low Temps  
Sat AM**

# Houston Pilots: Sat. 12/16/2023



## Forecast Discussion

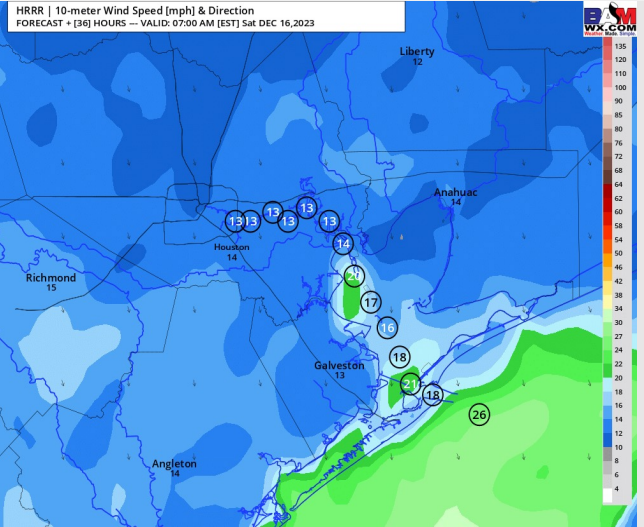
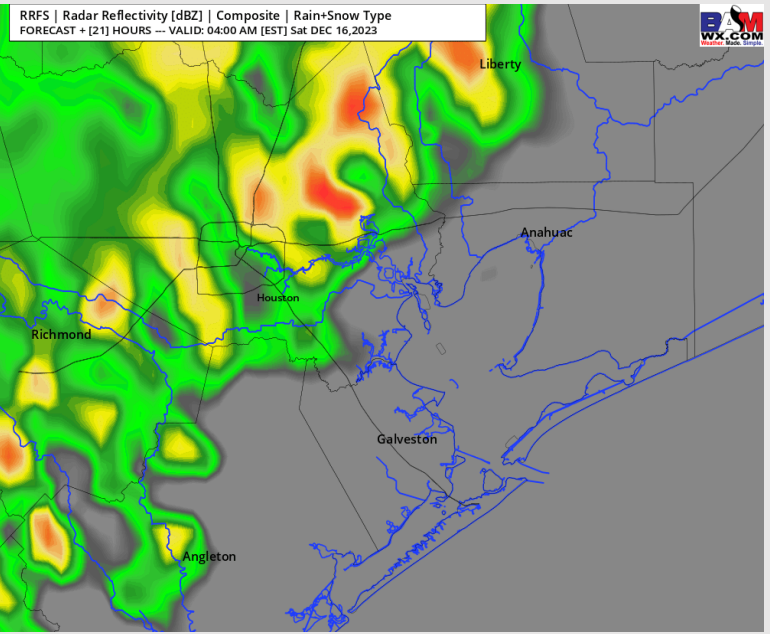
**Precip:** Between 2 – 3 AM-CT, a line of showers and a few storms will push into the Houston Metro area where showers will continue to be scattered to widespread in nature through 8-9 AM-CT. After this line exits, dry conditions favored for the rest of the day.

**Wind:** Winds will be variable and range from 5 - 10 kts for all locations as the front passes through about 2AM and then veer out of the N - NNE. **N of Morgan's Point:** Winds will increase to 8 - 12 kts by 5AM and continue that way for the remainder of the day. **S of Morgan's Point:** Winds will increase to 10 -15 kts by 5AM and continue that way for the remainder of the day. For the Boarding Station, winds of 13 – 18 kts will be possible between 10AM and 4PM, with localized gusts of up to 22 kts.

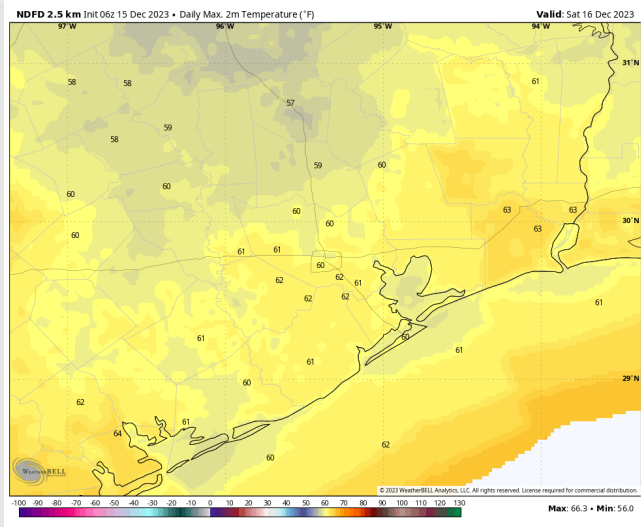
**High Temps:** **N of Morgan's Point:** Low 60s F. **S of Morgan's Point:** Low 60s F

**Visibility:** Not anticipating any fog concerns for Saturday, however heavy rainfall may reduce visibilities at times.

## Precip Image: 3 AM CT



**Wind Speed:  
6 AM CT**



**High Temps  
Saturday**

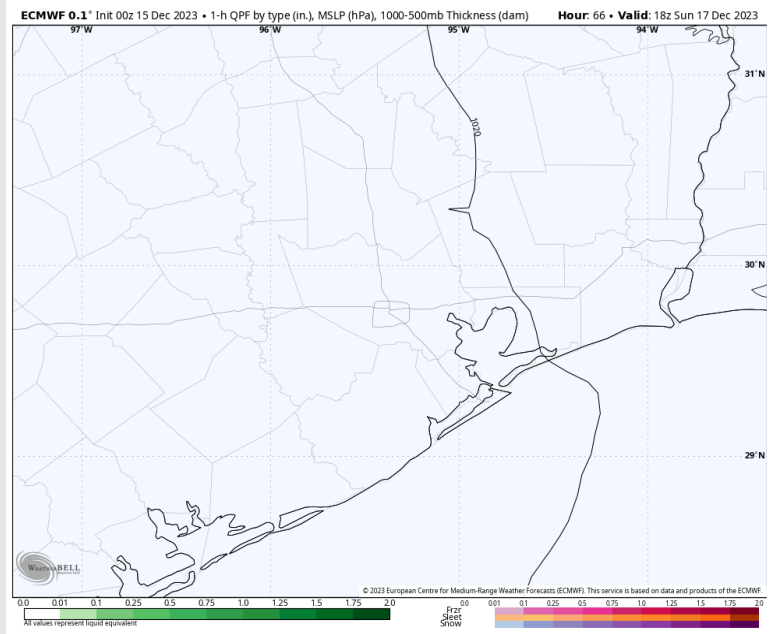
# Houston Pilots: Sun. 12/17/2023



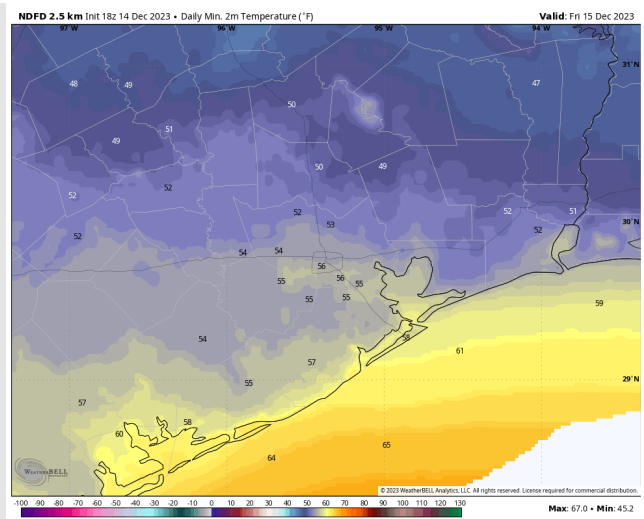
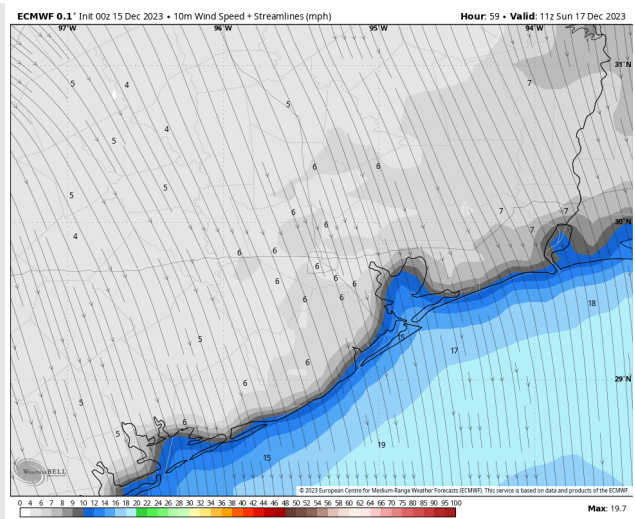
## Forecast Discussion

- Precip:** Anticipating dry conditions throughout Sunday.
- Wind:** Winds will remain out of the N through much of the day SUN but will shift out of the NW near 6 PM. **N of Morgan's Point:** Winds will be 3-8 kts for the entire day. **S of Morgan's Point:** Winds at 10-15 kts will gradually decrease through the morning, setting at 3-8 kts by 2 PM.
- High Temps:** **N of Morgan's Point:** Low 60s F. **S of Morgan's Point:** Low 60s F.
- Visibility:** Not anticipating any visibility concerns today.

## Precip Image: 12 PM CT



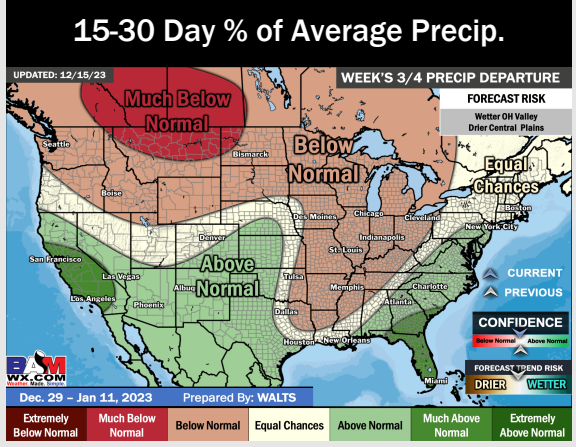
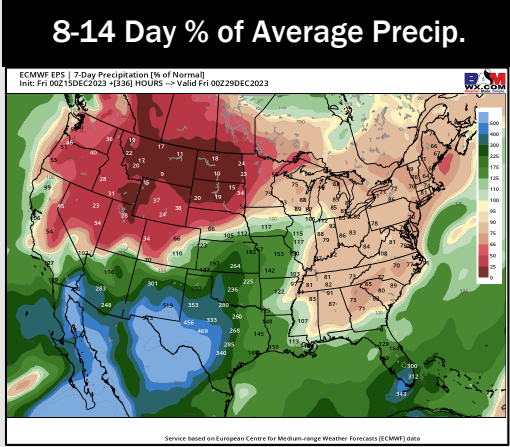
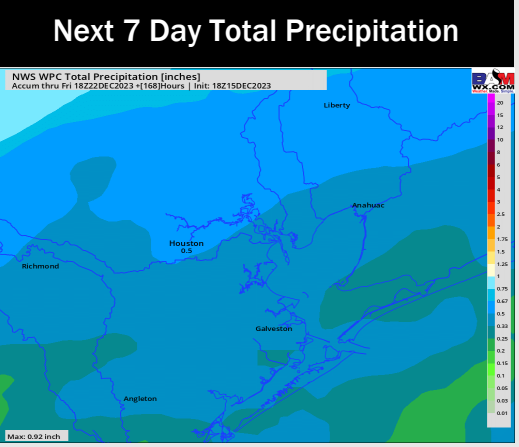
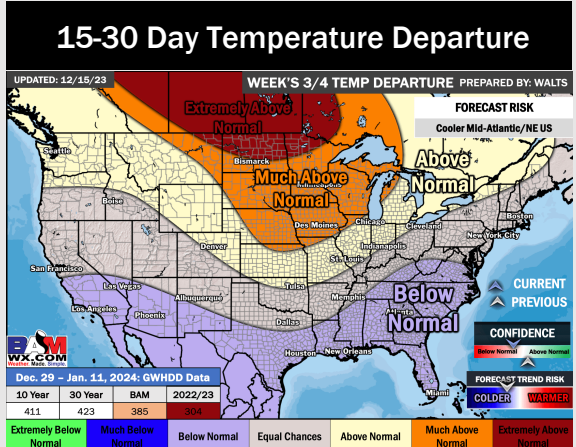
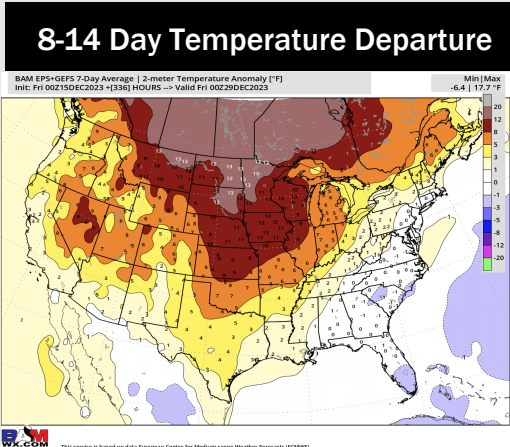
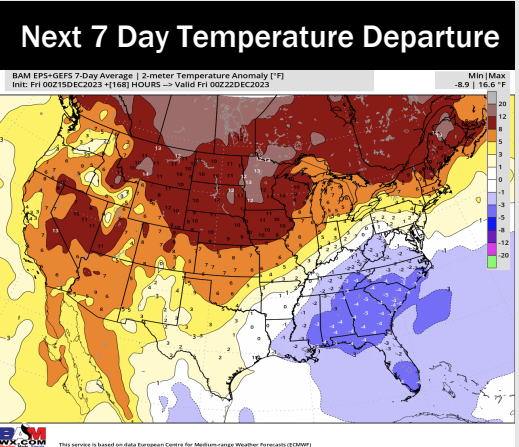
Wind Speed:  
5 AM CT



High Temps  
Sunday



# Houston Pilots: 12/15/23



- Next best shot at rain is moving in this afternoon / evening- continuing into Saturday morning. Seasonal temperatures favored for the week 1 timeframe.
- Above normal precipitation chances and slightly above normal temperatures are expected into the week 2 timeframe.
- Below normal temperatures and slightly above normal chances for precipitation are favored in the weeks ¾ timeframe.