

# Houston Pilots Forecast Package



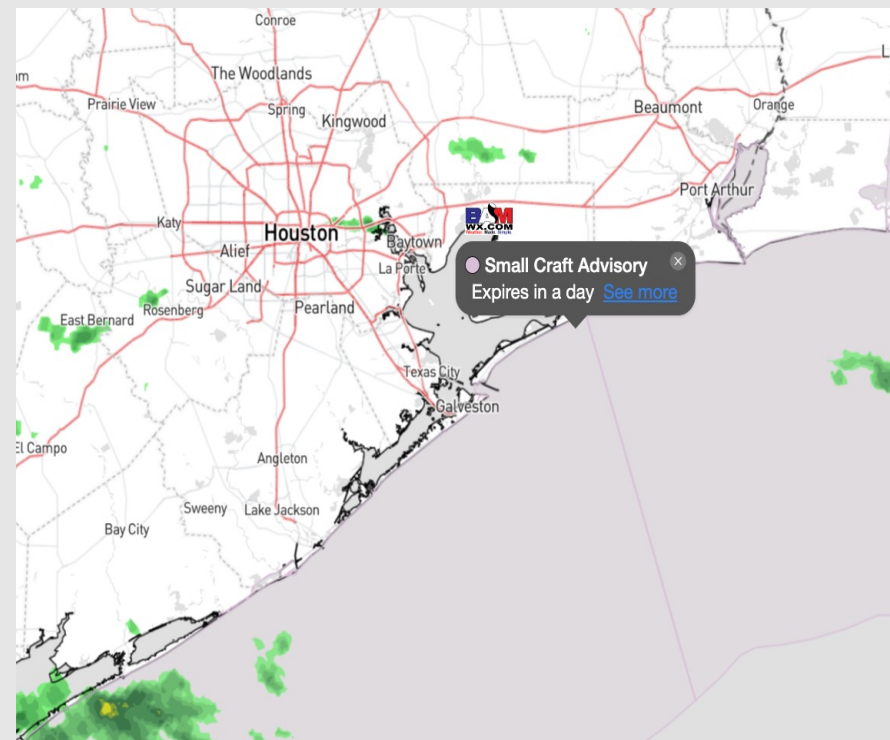
Updated: 12:30 AM CT

Thursday, December 14, 2023

Forecaster: John Kemper

## Weather Headlines

- Winds will continue to increase over the next 24 hours, **with max wave heights increasing to 5 – 7 ft for Boarding Station tonight/tomorrow AM.**
- A few localized chances of drizzle / light showers before arrival of heavy rain / storm chances associated with a front Friday Evening.
- Not favoring any visibility issues over the coming days for fog.



**Radar/NWS Alerts: 12:30 AM CT**

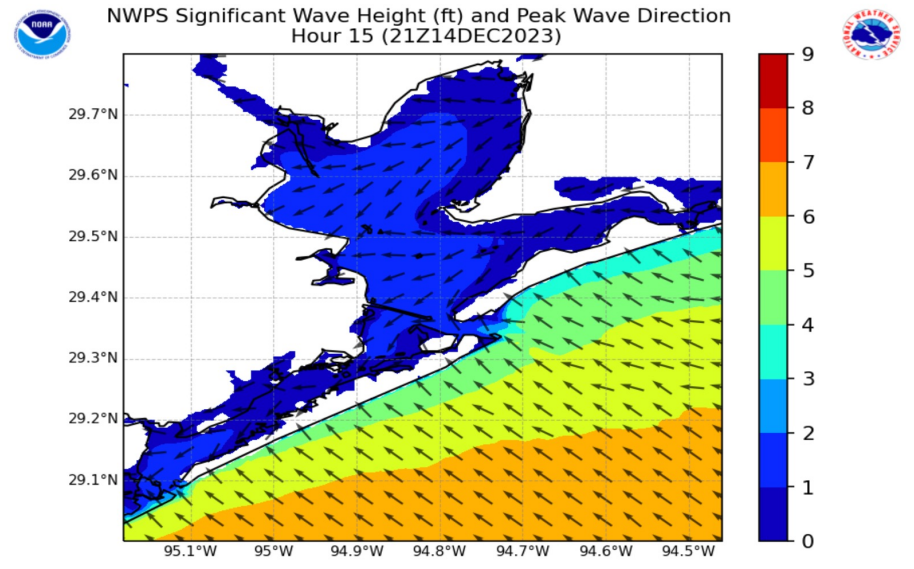


As always, please do not hesitate to reach out to us with any forecast questions via the chat option on the Weather Porthole or our on-call number, **(317)-560-8122** press 1 for forecast questions.

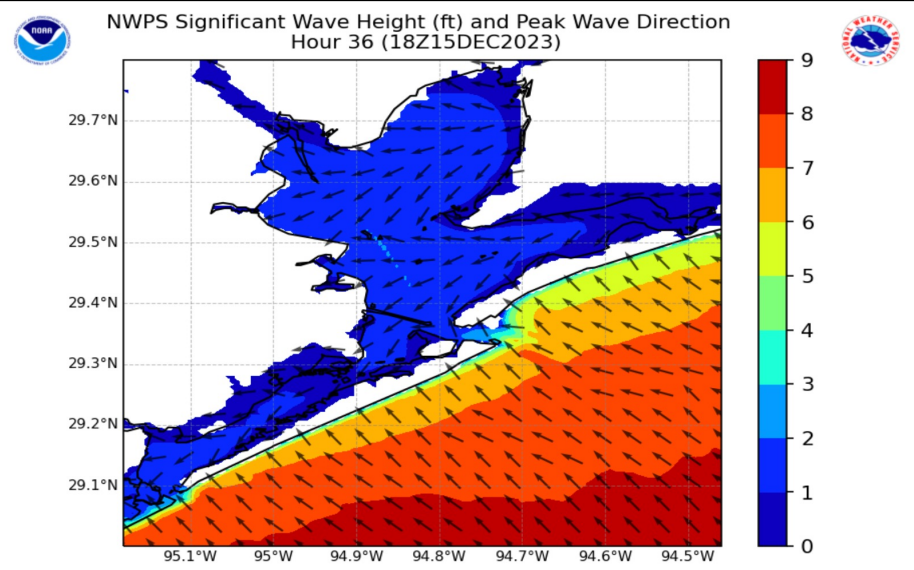
# Houston Pilots Wave Height Update



## Significant Wave Height Image



The top image shows wave heights around 3 PM CT this afternoon. Winds out of the southeast will increase max wave heights for the Boarding Station to 4 – 5 ft. Anticipating this to gradually increase through the PM



The bottom image shows wave heights around 12PM CT Friday. Max wave heights for the Boarding Station and 11/12 will reach 5 - 7 ft after ~9PM CT tonight and continue through early Friday afternoon.

# Houston Pilots Extended Range Visibility Report



## Sunday 12/17/23

No fog concerns for Sunday at this time.



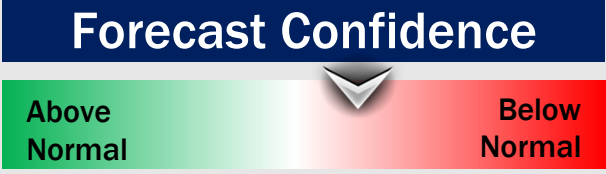
## Tuesday 12/19/23

No fog concerns for Tuesday at this time.



## Monday 12/18/23

No fog concerns for Monday at this time.



## Chance for Fog

Sunday AM	Unlikely
Sunday PM	Unlikely
Monday AM	Unlikely
Monday PM	Unlikely
Tuesday AM	Unlikely
Tuesday PM	Unlikely

# Houston Pilots Visibility Chart (miles)



**Forecast Confidence**

Above Normal

Below Normal

Time	Wed 11pm	Thu 12am	Thu 1am	Thu 2am	Thu 3am	Thu 4am	Thu 5am	Thu 6am	Thu 7am	Thu 8am	Thu 9am	Thu 10am	Thu 11am	Thu 12pm	Thu 1pm	Thu 2pm	Thu 3pm	Thu 4pm	Thu 5pm	Thu 6pm	Thu 7pm	Thu 8pm	Thu 9pm	Thu 10pm	Thu 11pm	Fri 12am	Fri 1am	Fri 2am	Fri 3am	Fri 4am	Fri 5am	Fri 6am	Fri 7am	Fri 8am	Fri 9am	Fri 10am		
610 Bridge	10	10	10	10	10	10	10	10	10	10	10	10	10	10	10	10	10	10	10	10	10	10	10	10	10	10	10	10	10	10	10	10	10	10	10	10	10	
Kinder 1	10	10	10	10	10	10	10	10	10	10	10	10	10	10	10	10	10	10	10	10	10	10	10	10	10	10	10	10	10	10	10	10	10	10	10	10	10	
Greens Bayou	10	10	10	10	10	10	10	10	10	10	10	10	10	10	10	10	10	10	10	10	10	10	10	10	10	10	10	10	10	10	10	10	10	10	10	10	10	
Shell Crude	10	10	10	10	10	10	10	10	10	10	10	10	10	10	10	10	10	10	10	10	10	10	10	10	10	10	10	10	10	10	10	10	10	10	10	10	10	
Lynchburg Ferries	10	10	10	10	10	10	10	10	10	10	10	10	10	10	10	10	10	10	10	10	10	10	10	10	10	10	10	10	10	10	10	10	10	10	10	10	10	
Exxon 3	10	10	10	10	10	10	10	10	10	10	10	10	10	10	10	10	10	10	10	10	10	10	10	10	10	10	10	10	10	10	10	10	10	10	10	10	9	10
Morgans Point	10	10	10	10	10	10	10	10	10	10	10	10	10	10	10	10	10	10	10	10	10	10	10	10	10	10	10	10	10	10	10	10	10	10	10	9	9	
75/76	10	10	10	10	10	10	10	10	10	10	10	10	10	10	10	10	10	10	10	10	10	10	10	10	10	10	10	10	10	10	10	10	10	10	9	9	9	
63/64	10	10	10	10	10	10	10	10	10	10	10	10	10	10	10	10	10	10	10	10	10	10	10	10	10	10	10	10	10	10	10	10	10	10	10	9	9	9
51/52	10	10	10	10	10	10	10	10	10	10	10	10	10	10	10	10	10	10	10	10	10	10	10	10	10	10	10	10	10	10	10	10	10	10	10	9	9	9
37/38	10	10	10	10	10	10	10	10	10	10	10	10	10	10	10	10	10	10	10	10	10	10	10	10	10	10	10	10	10	10	10	10	10	10	10	9	9	9
25/26	10	10	10	10	10	10	10	10	10	10	10	10	10	10	10	10	10	10	10	10	10	10	10	10	10	10	10	10	10	10	10	10	10	10	10	9	9	9
11/12	10	10	10	10	10	10	10	10	10	10	10	10	10	10	10	10	10	10	10	10	10	10	10	10	10	10	10	10	10	10	10	10	10	10	10	9	9	9
1 & 2 Bravo	10	10	10	10	10	10	10	10	10	10	10	10	10	10	10	10	10	10	10	10	10	10	10	10	10	10	9	9	9	9	9	9	9	9	9	9	9	

**NOTE: This is automated data that may/may not agree with the official BAM thinking that's found on the daily slides or special visibility report slides. This data should be used as a guide only**

# Houston Pilots Wind Chart



## Forecast Confidence



## Example

Sustained wind 13 Knots  
Gusts 18 Knots  
Wind from the N

WS: 13  
G:18  
N

Time Knots	Wed 11pm	Thu 12am	Thu 1am	Thu 2am	Thu 3am	Thu 4am	Thu 5am	Thu 6am	Thu 7am	Thu 8am	Thu 9am	Thu 10am	Thu 11am	Thu 12pm	Thu 1pm	Thu 2pm	Thu 3pm	Thu 4pm	Thu 5pm	Thu 6pm	Thu 7pm	Thu 8pm	Thu 9pm	Thu 10pm	Thu 11pm	Fri 12am	Fri 1am	Fri 2am	Fri 3am	Fri 4am	Fri 5am	Fri 6am	Fri 7am	Fri 8am	Fri 9am	Fri 10am		
610 Bridge	2	4	5	5	4	4	5	5	4	5	7	8	8	8	9	8	8	8	9	8	8	8	9	9	8	8	7	7	7	7	8	8	8	9	10	10		
	8	10	12	12	11	10	11	11	11	14	19	21	18	18	17	12	13	13	13	12	12	12	12	14	13	13	12	11	10	10	11	12	12	13	14	15	16	
Kinder 1	2	4	5	5	5	5	5	5	4	5	7	8	7	8	9	8	8	8	9	8	8	8	9	9	8	8	7	7	7	7	8	8	8	8	9	10	10	
	8	10	12	12	11	11	10	11	11	14	19	21	18	18	17	12	12	13	13	12	12	12	14	13	13	12	11	10	10	11	12	12	13	14	15	16		
Greens Bayou	3	4	5	5	5	5	4	4	5	7	7	7	7	9	8	8	8	8	8	8	8	8	9	9	8	8	7	7	7	7	8	8	8	8	9	10	10	
	8	10	12	12	11	12	11	11	11	12	19	20	18	17	17	12	12	12	13	12	12	12	14	13	12	12	11	10	10	10	11	12	12	14	15	16		
Shell Crude	3	3	4	5	5	5	4	4	5	6	7	7	7	9	8	8	8	9	8	8	8	8	9	9	8	8	7	7	7	7	8	8	8	8	9	10	10	
	8	10	12	12	12	11	10	11	12	19	19	18	17	17	12	12	13	13	12	12	12	12	14	13	12	12	11	10	10	11	12	12	13	14	15	16		
Lynchburg Ferries	3	3	4	4	4	5	4	4	4	6	7	7	7	8	8	9	9	9	8	8	8	8	9	9	8	8	7	7	7	7	8	8	8	9	9	10	10	
	9	10	12	12	11	12	11	10	11	12	19	18	18	17	17	12	12	13	13	12	12	12	14	13	12	12	11	10	10	11	12	12	13	14	15	16		
Exxon 3	4	3	4	5	4	5	4	4	4	6	7	7	7	8	9	9	9	9	9	9	9	9	9	10	10	9	9	8	8	8	8	9	9	10	10	11	11	
	9	11	12	12	12	12	11	11	12	20	18	19	16	16	13	13	13	13	12	12	12	13	15	13	13	12	11	11	11	12	13	13	14	15	16			
Morgans Point	6	6	7	7	7	8	7	6	6	9	9	8	7	7	9	10	10	10	11	10	11	11	11	11	11	10	10	10	10	11	11	11	12	12	12	12		
	10	12	13	13	13	13	15	12	12	13	21	19	17	16	16	14	14	14	14	13	13	13	14	15	14	14	13	13	13	13	14	14	15	15	16	16		
75/76	8	10	11	11	10	12	13	12	12	11	12	10	8	5	5	10	11	12	13	13	13	13	13	14	13	13	13	13	14	14	13	14	15	15	16	15	14	
	12	15	14	15	14	15	17	15	15	17	20	20	16	14	13	14	15	15	15	15	15	15	15	15	15	15	15	15	15	15	15	15	15	15	15	16	16	
63/64	9	11	11	11	10	12	13	13	12	12	12	10	9	4	4	11	12	13	14	14	14	14	14	14	14	14	14	14	14	14	14	15	16	17	17	16	15	
	13	15	15	15	14	16	17	16	16	18	19	20	19	14	13	15	14	15	16	16	15	15	15	15	16	15	15	15	16	15	16	16	17	18	18	18	17	
51/52	9	10	10	10	9	11	12	13	12	12	12	10	11	6	6	12	12	13	14	14	14	14	14	14	14	14	14	14	14	14	14	15	15	16	16	16	15	
	14	15	15	15	14	17	18	18	16	18	20	21	21	16	15	15	15	16	16	15	15	15	16	16	16	16	16	16	16	16	16	16	17	18	18	17	19	
37/38	9	11	9	9	8	10	12	12	11	12	11	11	12	8	8	13	13	13	14	14	14	14	14	14	15	16	15	15	15	14	15	16	17	17	16	17	16	
	14	16	16	16	15	18	20	19	17	18	20	21	22	17	16	16	17	17	17	17	17	16	16	16	16	16	16	16	16	16	16	16	16	16	16	16	16	16
25/26	9	10	9	9	8	10	12	11	11	11	11	11	13	10	10	13	13	13	14	14	14	14	14	14	15	15	14	14	14	14	15	15	16	16	16	16	17	16
	16	18	18	17	16	19	21	20	19	20	21	22	23	18	18	17	17	18	18	18	18	17	18	18	18	18	16	17	17	16	17	18	19	19	20	21	21	
11/12	9	12	11	11	9	12	14	14	13	14	14	14	15	12	12	14	14	14	14	14	14	15	14	15	16	16	15	15	14	14	15	16	16	16	16	17	17	17
	17	19	19	18	17	19	21	22	21	22	23	23	23	20	19	17	17	18	18	18	18	19	19	19	19	19	19	19	19	19	19	19	19	19	19	21	21	21
1 & 2 Bravo	13	14	15	14	13	15	16	18	17	18	17	18	17	15	15	17	17	17	17	18	18	18	18	19	20	20	19	18	19	19	20	21	21	21	22	22	20	
	19	20	19	19	18	20	21	23	22	23	24	25	24	21	20	18	18	19	20	20	20	20	20	21	22	22	20	20	20	20	21	23	23	23	23	24	24	

NOTE: This is automated data that may/may not agree with the official BAM thinking that's found on the daily slides or special visibility report slides. This data should be used as a guide only

# Houston Pilots: Thu. 12/14/2023



## Forecast Discussion

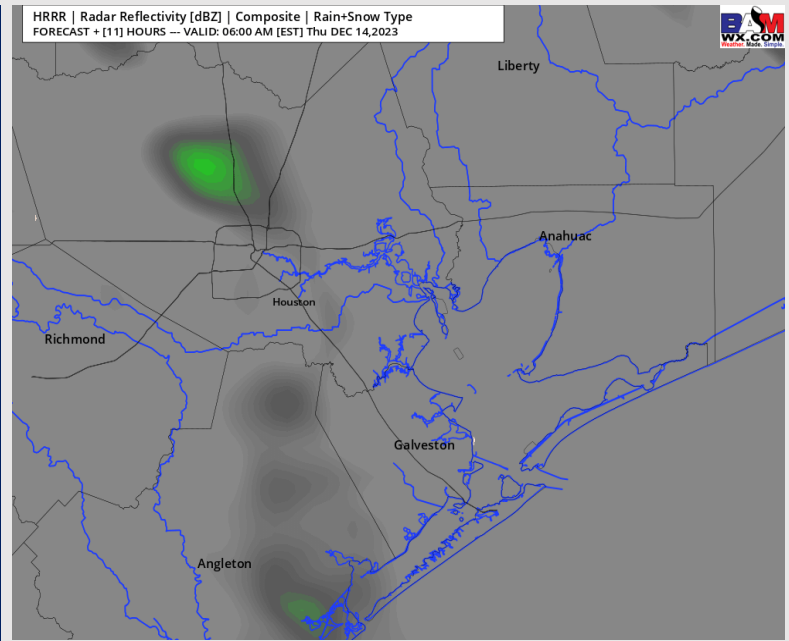
**Precip:** Low end risk (10% chance) for patchy drizzle through 7AM, with dry air near the surface keeping this risk fairly localized. Most locations will remain fully dry.

**Wind:** Winds will start out of the E / ENE and continue that way for the remainder of the day. **N of Morgan's Point:** Winds will be 7-12 kts for the entire day. **S of Morgan's Point:** 11 - 16 kts for the entire day outside of a brief window from 9 AM - 4 PM (winds at 9 - 14 kts). 11/12 and Boarding Station winds at 17 - 22kts. **Gusts of up to 20- 22 kts North of Morgan's Point after 9 AM and up to 22 - 26 kts at 11/12 and the Boarding Station. Best opportunity arrives between 4PM and beyond for gusts locally of up to 28kts for 11/12 and Boarding Station.**

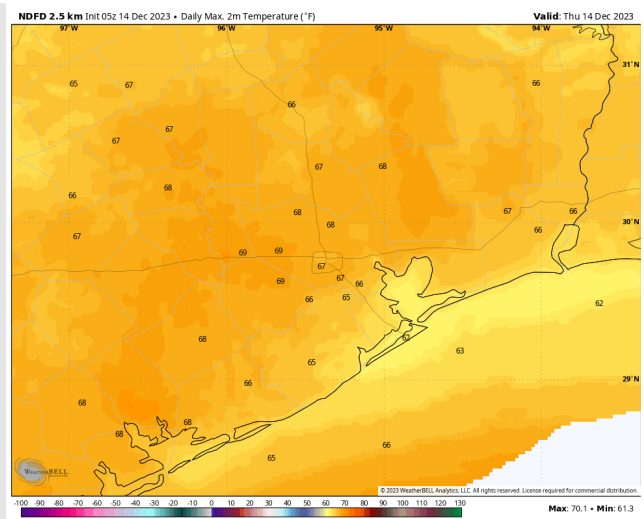
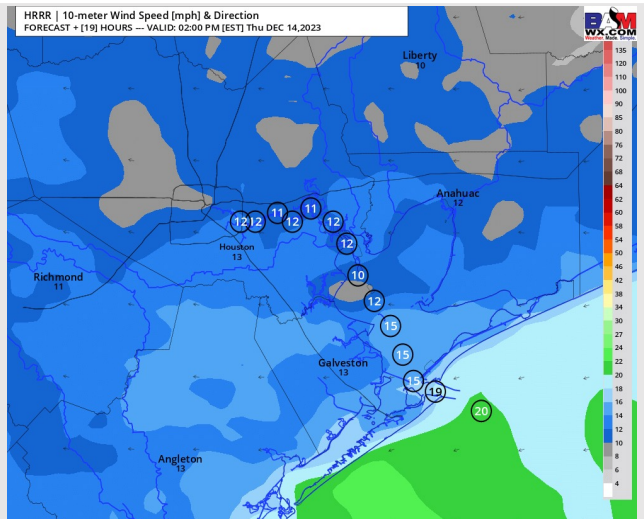
**Temps:** **N of Morgan's Point:** Mid to Upper 60s F. **S of Morgan's Point:** Low to mid 60s F.

**Visibility:** Not anticipating any visibility concerns today.

## Precip Image: 5 AM CT



Wind Speed:  
1 PM CT



High Temps  
Today

# Houston Pilots: Fri. 12/15/2023



## Forecast Discussion

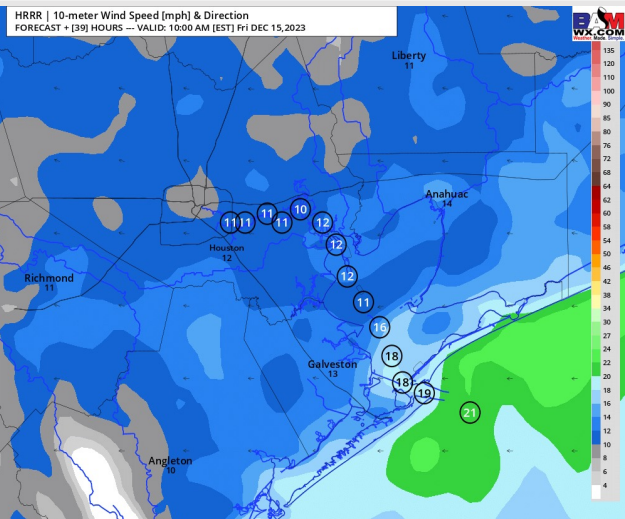
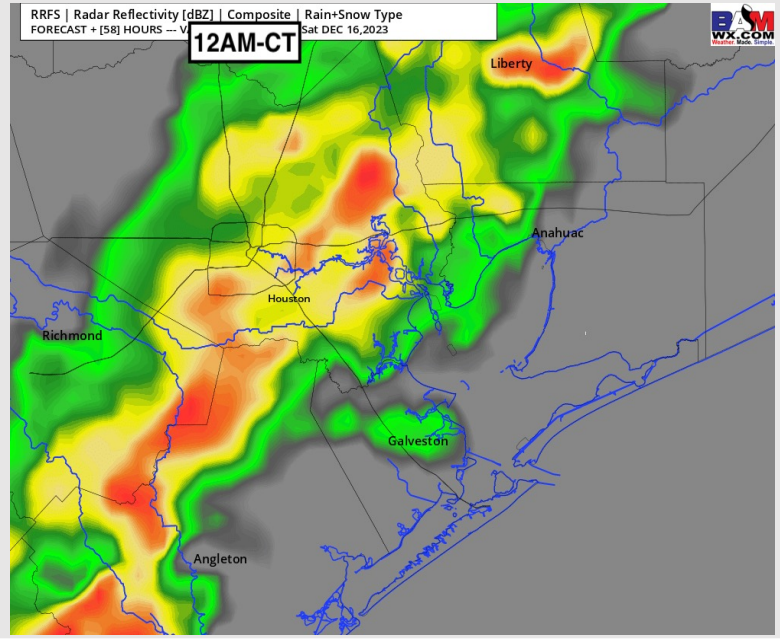
**Precip:** Low end chances (20%) for scattered showers during the AM hours. Scattered Pockets of Heavy Rain / Storms possible after 6PM with storm front arriving shortly after 10PM.

**Wind:** Winds will continue to remain out of the E through 8PM before veering out of the ESE prior to arrival of front. **N of Morgan's Point:** Winds will be 8-13 kts for the entire day. **S of Morgan's Point:** 12 - 16 kts for the entire day. **Gusts of up to 22 kts North of Morgan's Point and up to 22 - 26 kts at 11/12 and the Boarding Station. Localized Storm Gusts of up to 35kts can't be ruled out for all locations.**

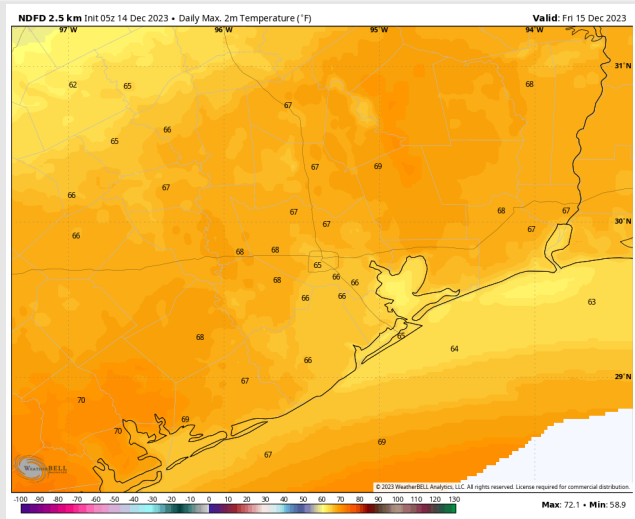
**High Temps:** **N of Morgan's Point:** Mid 60s F. **S of Morgan's Point:** Mid 60s F.

**Visibility:** Not favoring sea fog concerns at this point given timing of front.

## Precip Image: SAT 12 AM CT



**Wind Speed:  
9 AM CT**



**High Temps  
Friday**

# Houston Pilots: Sat. 12/16/2023



## Forecast Discussion

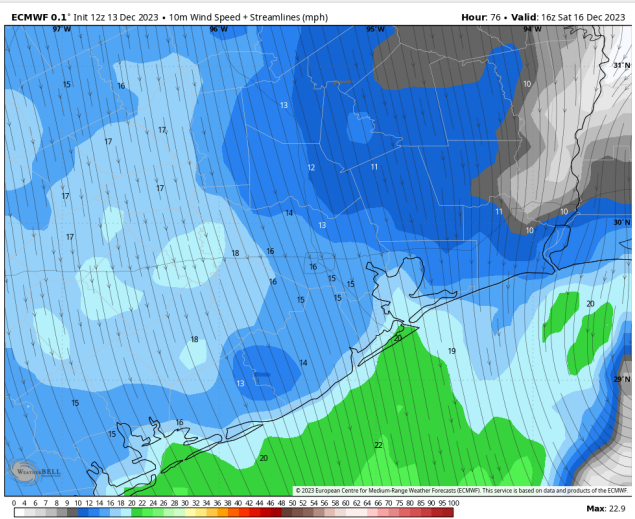
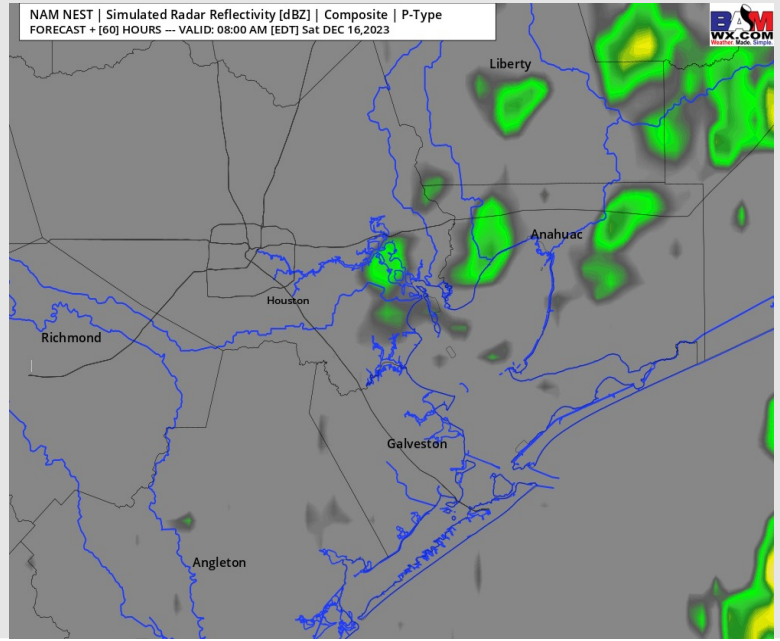
**Precip:** Scattered pockets of light showers will follow the front once it moves past the area after 1AM, with (20%) chances continuing through 9AM.

**Wind:** Winds will be variable and range from 5 - 10 kts for all locations as the front passes through about 2AM and then veer out of the N - NNE. **N of Morgan's Point:** Winds will increase to 8 - 12 kts by 5AM and continue that way for the remainder of the day. **S of Morgan's Point:** Winds will increase to 10 -15 kts by 5AM and continue that way for the remainder of the day. For the Boarding Station, winds of 13 - 18 kts will be possible between 10AM and 4PM, with localized gusts of up to 22 kts.

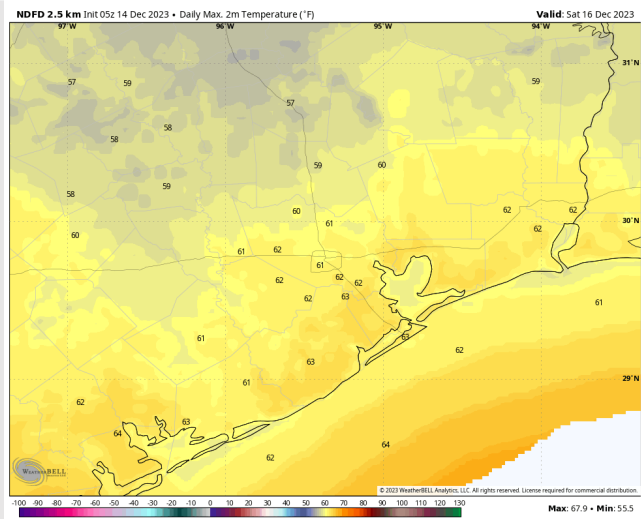
**High Temps:** **N of Morgan's Point:** Low 60s F. **S of Morgan's Point:** Low 60s F

**Visibility:** Not anticipating any fog concerns for Saturday.

## Precip Image: 7 AM CT



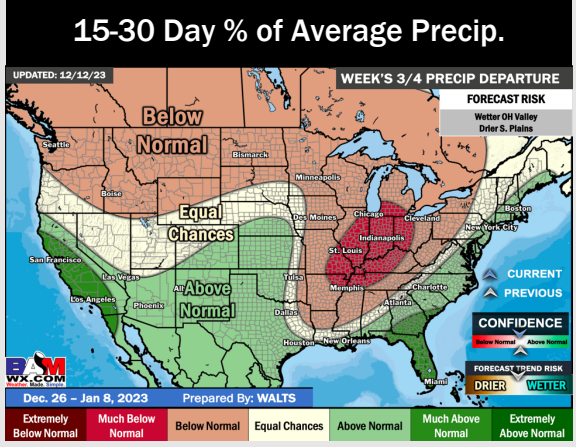
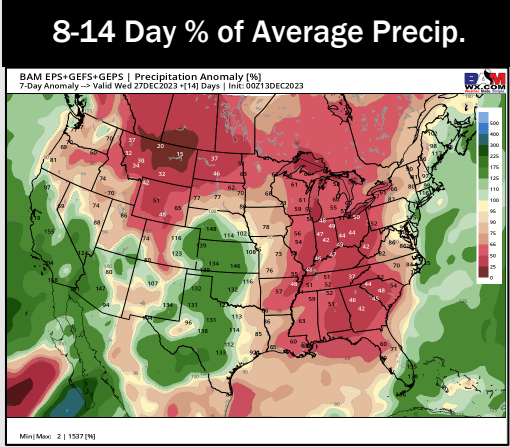
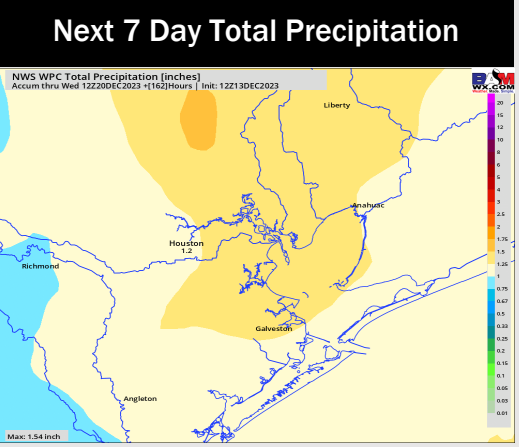
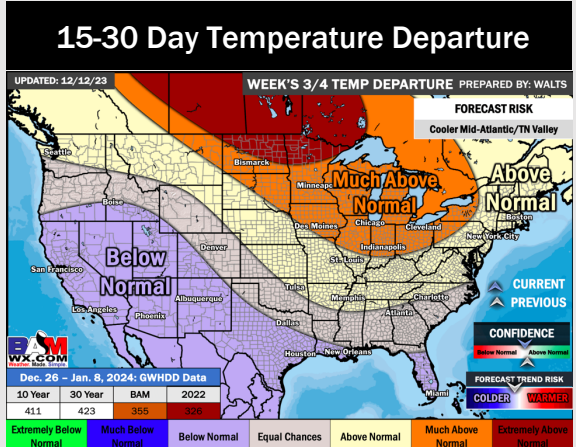
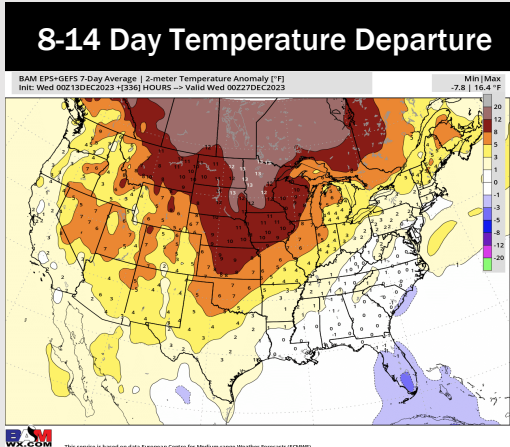
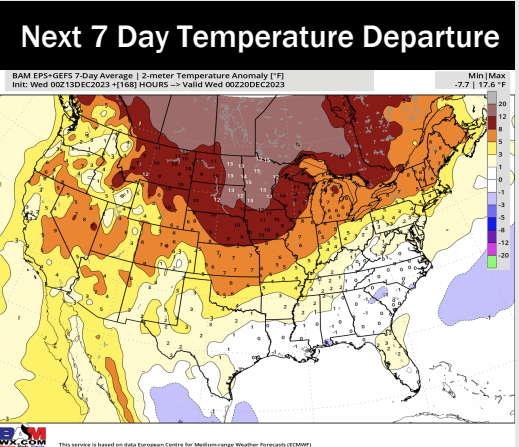
Wind Speed:  
11 AM CT



High Temps  
Saturday



# Houston Pilots: 12/14/23



- Next best shot at rain will move in this Friday afternoon into Saturday morning. Seasonal/ Near normal temperatures favored.
- Below normal precipitation chances and seasonal/slightly above normal temperatures are expected into the week 2 timeframe.
- Below normal temperatures and slightly above normal chances for precipitation are favored in the weeks ¾ timeframe.