

Houston Pilots Forecast Package



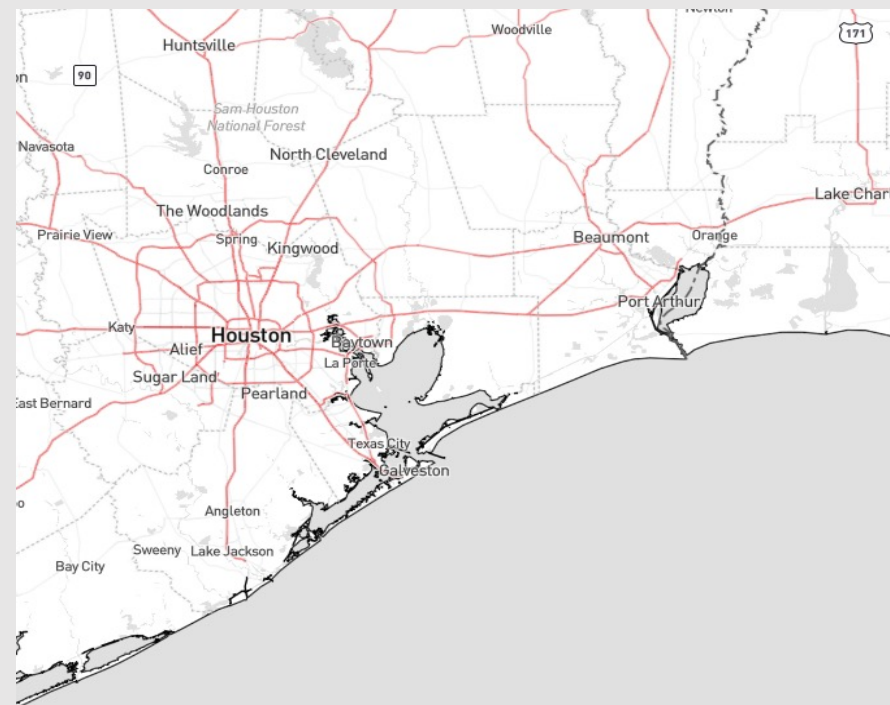
Updated: 1:35 PM CT

Monday, December 11, 2023

Forecaster: Will Danby

Weather Headlines

- E/SE winds this afternoon will help to restore some of the lowered water levels in the bay
- Calmer winds favored over the next 24 hours (<12 kts) winds will begin to increase Tuesday afternoon.
- A drier pattern is expected over the next few days. Next rain chances would not enter until Friday evening.
- Not favoring any visibility issues over the coming days for fog.



Radar/NWS Alerts: 1:32 PM CT



As always, please do not hesitate to reach out to us with any forecast questions via the chat option on the Weather Porthole or our on-call number, **(317)-560-8122** press 1 for forecast questions.

Houston Pilots Extended Range Visibility Report



Thursday 12/14/23

No fog concerns Thursday.



Saturday 12/16/23

No fog concerns for Saturday, however reduced visibilities under heavier downpours will need to be monitored.



Friday 12/15/23

Pending timing on heavier rains to the west, it would be worth monitoring for sea fog in the AM ahead of rain showers. Compared to previous updates, the threat remains less likely.



Chance for Fog

Thursday AM	Unlikely
Thursday PM	Unlikely
Friday AM	Possible
Friday PM	Unlikely
Saturday AM	Unlikely
Saturday PM	Unlikely

Houston Pilots Wind Chart



Forecast Confidence



Example

Sustained wind 13 Knots
 Gusts 18 Knots
 Wind from the N

WS: 13
 G:18
 N

Time Knots	Mon 1pm	Mon 2pm	Mon 3pm	Mon 4pm	Mon 5pm	Mon 6pm	Mon 7pm	Mon 8pm	Mon 9pm	Mon 10pm	Mon 11pm	Tue 12am	Tue 1am	Tue 2am	Tue 3am	Tue 4am	Tue 5am	Tue 6am	Tue 7am	Tue 8am	Tue 9am	Tue 10am	Tue 11am	Tue 12pm	Tue 1pm	Tue 2pm	Tue 3pm	Tue 4pm	Tue 5pm	Tue 6pm	Tue 7pm	Tue 8pm	Tue 9pm	Tue 10pm	Tue 11pm	Wed 12am			
610 Bridge	2	4	3	4	5	5	4	3	3	3	3	3	3	4	3	4	4	4	5	7	8	8	7	8	8	8	8	8	8	8	8	8	7	7	7	7	6		
Kinder 1	3	4	3	4	5	4	4	3	3	3	3	3	3	4	3	4	4	4	5	7	8	8	8	8	8	8	8	8	8	8	8	8	7	7	7	6	6		
Greens Bayou	3	4	4	4	5	4	4	3	3	3	3	3	3	3	4	4	4	4	5	7	8	8	8	8	8	8	8	8	8	8	8	7	7	7	6	6			
Shell Crude	3	4	4	5	5	4	4	3	3	3	3	3	3	3	4	4	4	5	5	7	8	8	8	8	8	8	8	8	8	8	8	7	7	7	6	6			
Lynchburg Ferries	3	5	4	5	5	4	4	3	3	3	3	3	3	4	4	4	5	6	7	8	8	8	8	8	8	8	8	8	8	8	8	8	8	8	7	7	6		
Exxon 3	3	5	4	4	4	4	4	4	4	4	4	4	4	4	4	5	5	6	6	7	8	8	8	8	8	8	8	8	8	8	8	8	8	8	8	7	7	7	
Morgans Point	3	6	5	6	8	9	8	7	8	8	8	8	8	7	8	7	8	8	9	10	11	11	11	12	12	13	13	14	14	14	14	13	13	12	12	11	9		
75/76	1	3	3	4	6	7	6	6	7	8	8	7	7	7	7	8	9	10	11	12	12	12	11	10	10	11	12	13	14	16	16	15	15	15	15	14	13	12	
63/64	1	2	3	4	6	6	5	6	7	8	7	7	7	7	8	8	9	10	11	12	12	13	13	13	13	14	15	16	16	16	16	16	16	16	16	16	16	16	16
51/52	1	2	4	5	6	6	5	6	7	7	7	6	6	6	7	7	8	9	10	11	12	12	12	11	12	13	14	15	16	16	16	16	16	16	16	16	16	16	
37/38	2	4	4	5	5	5	5	6	7	7	7	6	6	6	6	7	8	9	10	11	12	12	13	14	14	14	14	15	16	16	16	16	16	16	16	16	16	16	
25/26	3	4	4	4	4	5	5	6	7	7	6	6	6	6	6	7	8	8	10	11	12	13	13	13	14	14	14	14	14	14	14	14	14	14	14	14	14	14	
11/12	3	4	3	3	4	5	6	7	7	8	8	7	7	7	7	7	8	9	10	10	12	13	13	13	14	14	14	14	14	14	14	14	14	14	14	14	14	14	
1 & 2 Bravo	4	3	3	3	5	6	8	8	8	10	10	9	8	8	8	9	9	10	11	11	12	14	15	15	15	16	16	17	17	17	17	17	17	17	17	17	17	17	

NOTE: This is automated data that may/may not agree with the official BAM thinking that's found on the daily slides or special visibility report slides. This data should be used as a guide only

Houston Pilots: Mon. 12/11/2023



Forecast Discussion

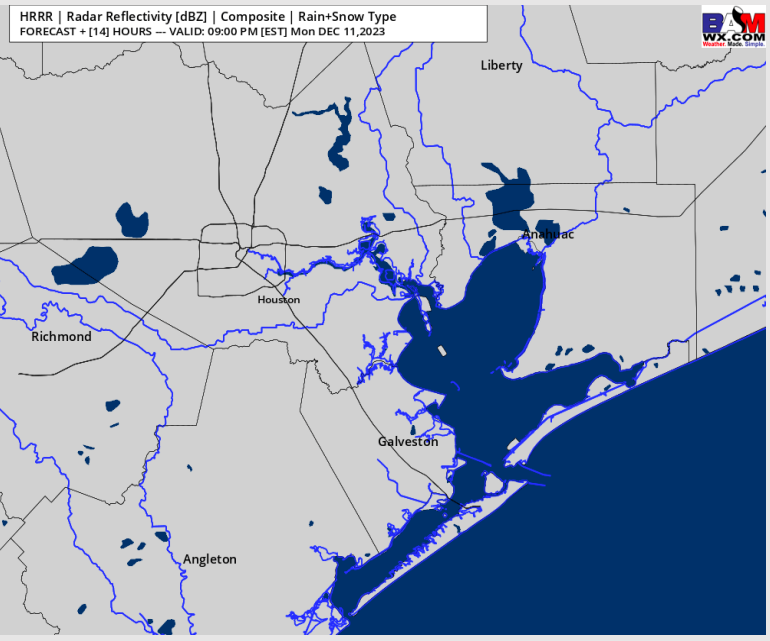
Precip: Favoring dry conditions for today

Wind: Winds will continue from the SE for the remainder of the afternoon. **N of Morgan's Point: 3 - 7 kts. S of Morgan's Point: Winds of 3 - 8 kts through 4 PM. 5 - 10 kts after 4 PM.**

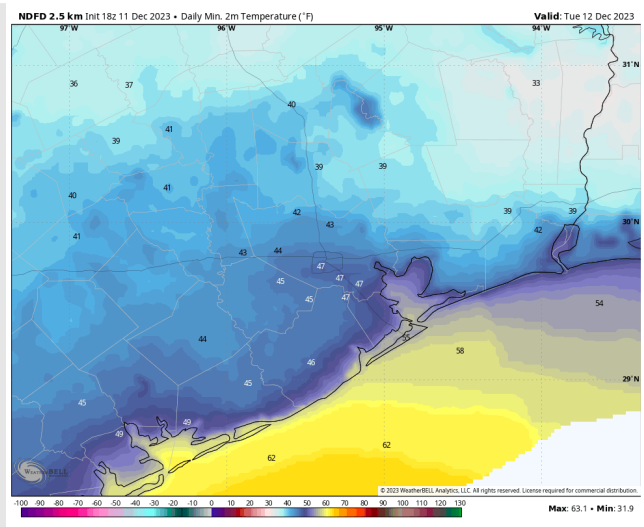
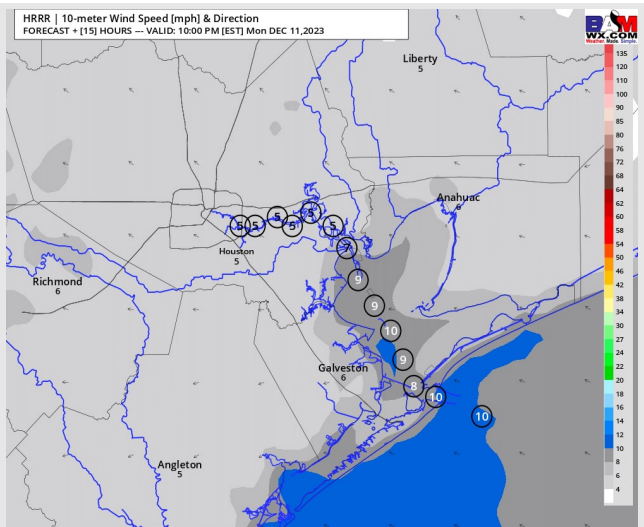
Low Temps: **N of Morgan's Point: Mid 40s F. S of Morgan's Point: Low to mid 50s F. Boarding Station closer to upper 50s F.**

Visibility: Not anticipating any visibility concerns tomorrow morning. While there is a stable atmosphere that can produce fog, there is not enough moisture to see this initialize.

Precip Image: 8 PM CT



Wind Speed:
9 PM CT



Low Temps
Tuesday AM

Forecast Discussion

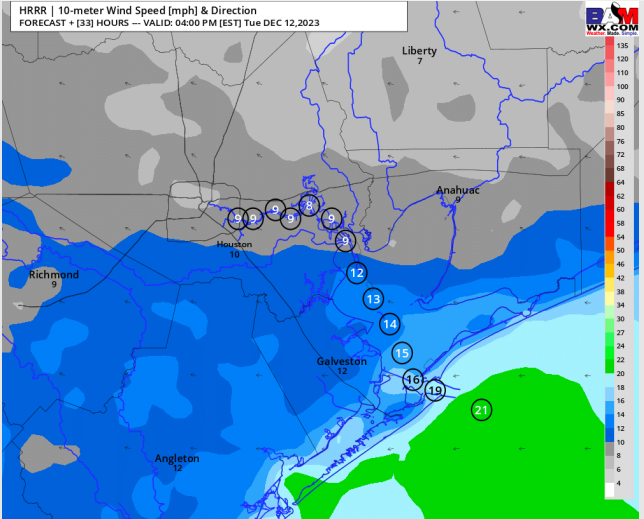
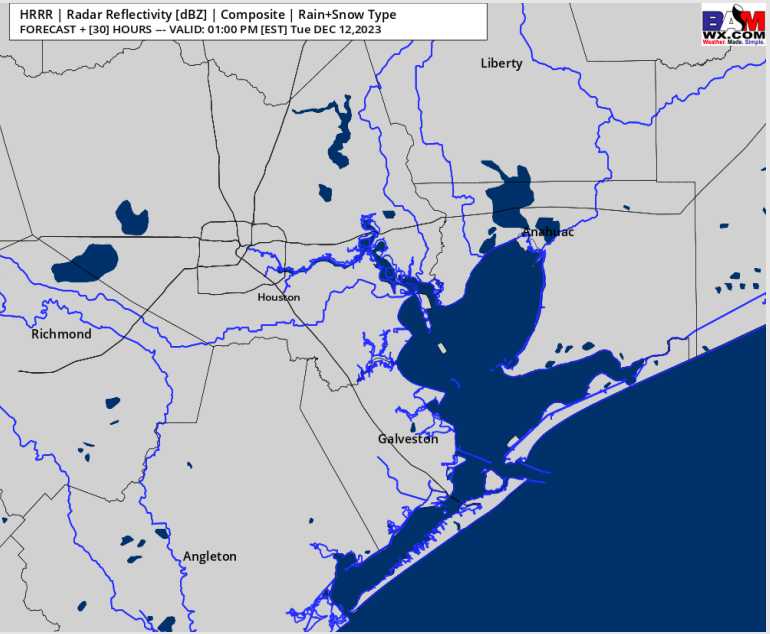
Precip: Dry conditions persist for Tuesday

Wind: Winds will be out of the SE through 9 AM TUE before shifting to out of the E for the remainder of the day. **N of Morgan's Point:** 3-8 kts through 10 AM before increasing to 6-11 kts. **S of Morgan's Point:** 6-11 kts through 7 AM, then a slow increasing trend to 11 - 16 kts by 1 PM and continuing there the rest of the day (winds will be slightly higher near the Boarding Station at 16 - 21 kts post 3 PM). **Gusts of 20-25 kts will be possible after 3 PM S of Morgan's Point.**

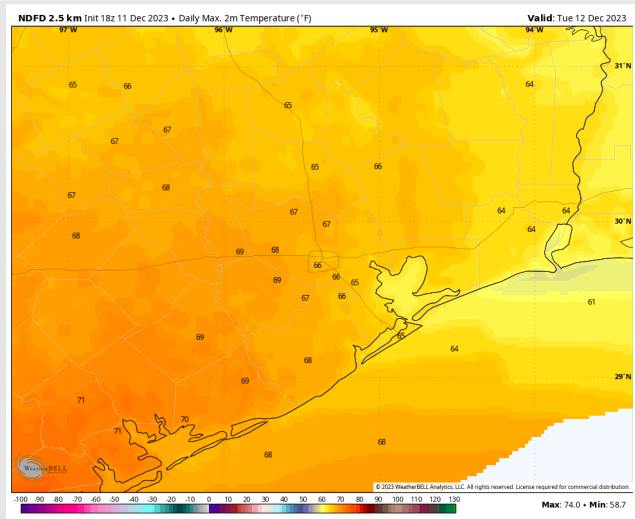
High Temps: **N of Morgan's Point:** Mid 60s F. **S of Morgan's Point:** Low to mid 60s F

Visibility: No fog concerns expected for Tuesday.

Precip Image: 12 PM CT



Wind Speed:
4 PM CT



High Temps
Tuesday

Forecast Discussion

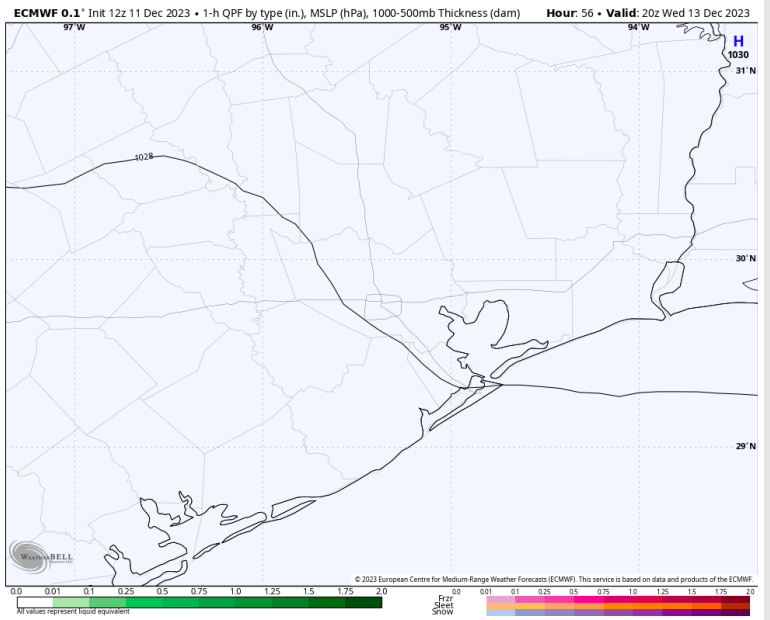
Precip: Dry conditions favored for Wednesday.

Wind: Winds will start out of the E through ~6 AM before veering slightly out of the ENE by 12 PM. **N of Morgan's Point:** Winds will be 6-11 kts the entire day. **S of Morgan's Point:** Winds will continue at 9-14 kts for the entire day. For 11/12 and the Boarding Station, winds are more elevated at 12 - 17 kts in the AM, increasing to 14 - 19 kts post 7 PM. **Wind gusts of 22-25 kts will be possible S of Morgan's Point through 12 PM WED.**

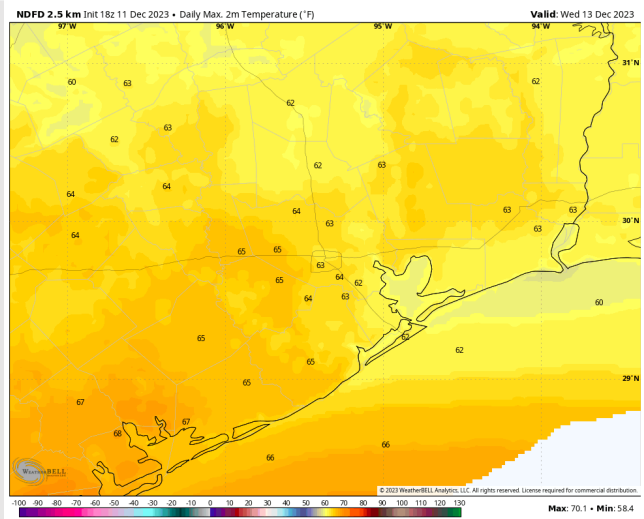
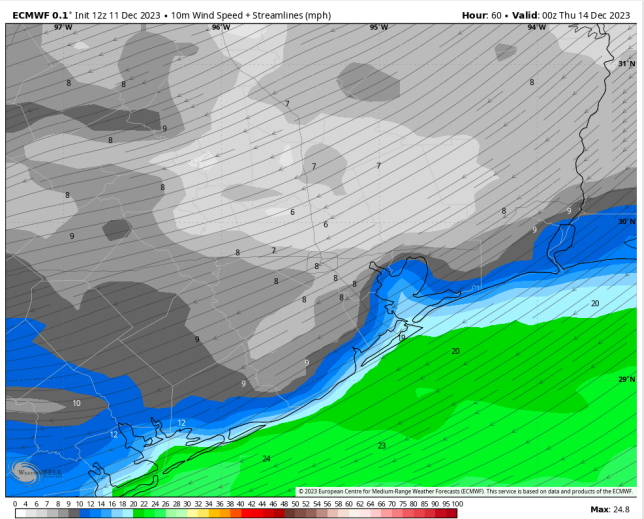
Low Temps: **N of Morgan's Point:** Low to mid 60s F. **S of Morgan's Point:** Low 60s F

Visibility: Not anticipating any fog concerns Wednesday.

Precip Image: 2 PM CT

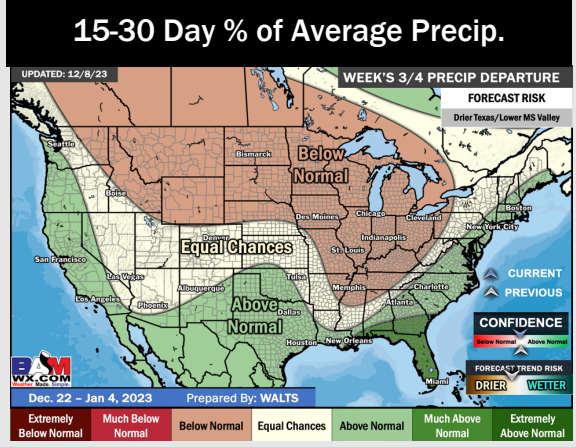
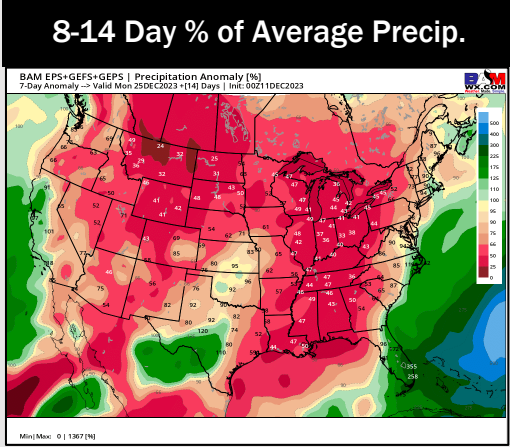
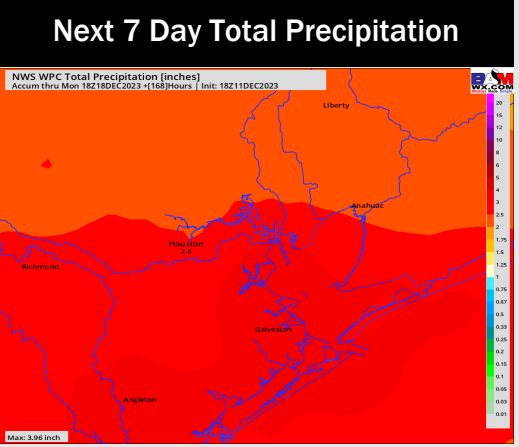
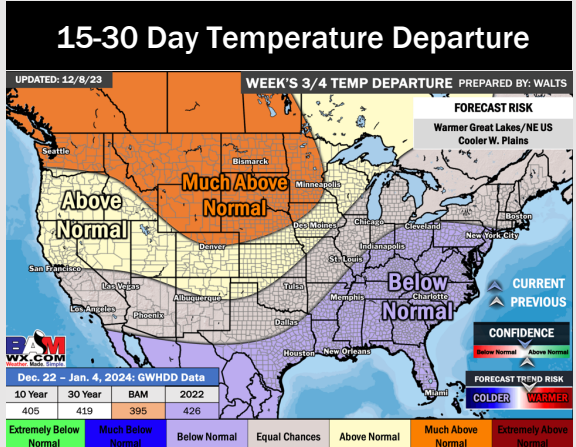
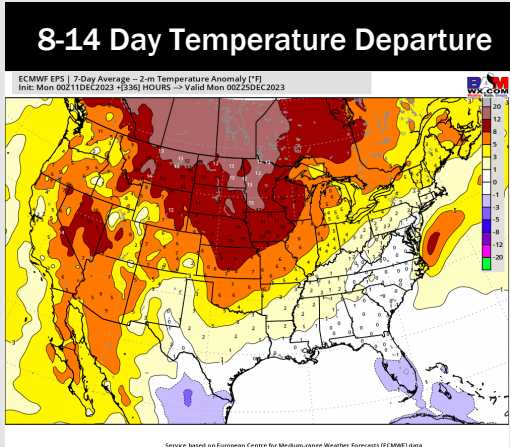
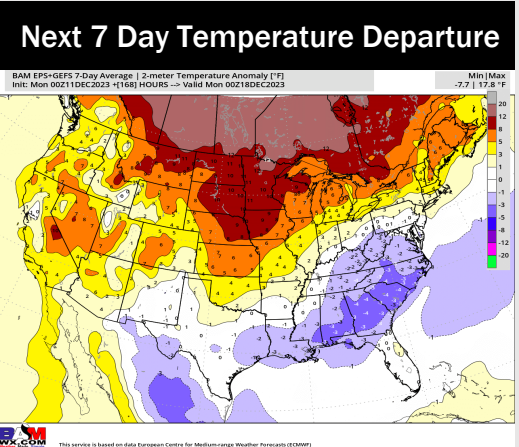


**Wind Speed:
6 PM CT**



**High Temps
Wednesday**

Houston Pilots: 12/11/23



- Next best shot at rain will move in this Friday afternoon into Saturday morning. Slightly below normal temperatures favored.
- Below normal precipitation chances and seasonal temperatures are expected into the week 2 timeframe.
- Below normal temperatures and above normal chances for precipitation are favored in the weeks 3/4 timeframe.