

Houston Pilots Forecast Package



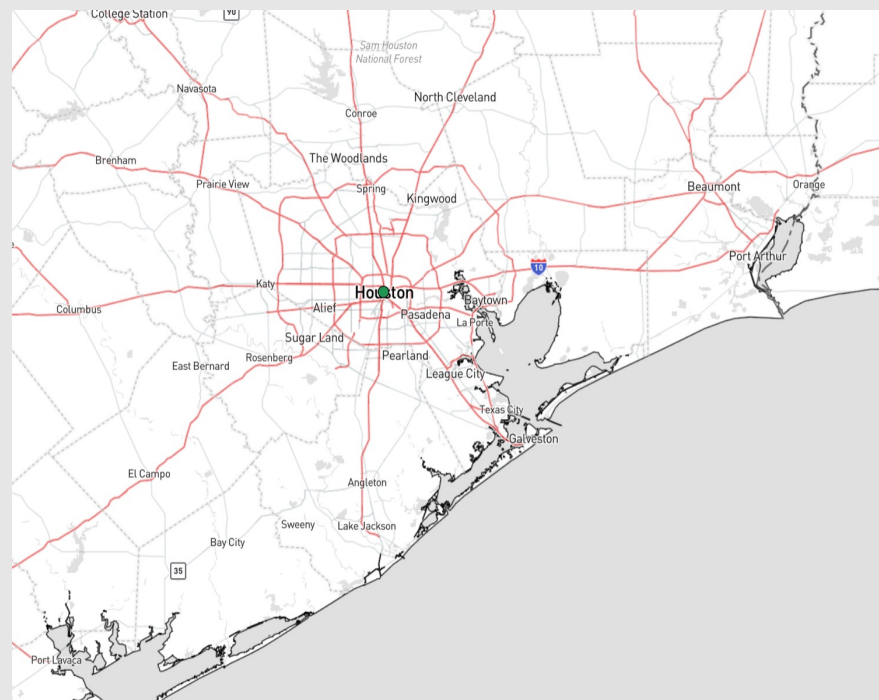
Updated: 1:40 AM CT

Tuesday, December 19, 2023

Forecaster: Jonathan Kipper

Weather Headlines

- Winds are expected to remain calm over the next couple days, seldom reaching over 15kts outside of the Boarding Station.
- Dry conditions are favored over the next few days, with next rain chances occurring late THU into FRI
- Not favoring any visibility issues over the coming days for fog (low end risk on THU).
- Next Best opportunity for Sea Fog arrives Friday PM into Saturday AM



Radar/NWS Alerts: 1:35 AM CT



As always, please do not hesitate to reach out to us with any forecast questions via the chat option on the Weather Porthole or our on-call number, **(317)-560-8122** press 1 for forecast questions.

Houston Pilots Extended Range Visibility Report



Friday 12/22/23

Sea fog will be possible in the AM hours. Would need to watch into the early afternoon as southerly winds can draw up moisture into the bay

Forecast Confidence



Sunday 12/24/23

Fog will once again be present in a patchy to widespread nature across the area SUN, especially during the AM hours

Forecast Confidence



Saturday 12/23/23

As a front passes through the area FRI, patchy to widespread fog across the area will need to be monitored (exit time for rain will need to be watched for potential timeframe of fog on SAT).

Forecast Confidence



Chance for Fog

Friday AM	Low-end
Friday PM	Possible
Saturday AM	Likely
Saturday PM	Possible
Sunday AM	Likely
Sunday PM	Possible

Houston Pilots Visibility Chart (miles)



Time	Tue 12am	Tue 1am	Tue 2am	Tue 3am	Tue 4am	Tue 5am	Tue 6am	Tue 7am	Tue 8am	Tue 9am	Tue 10am	Tue 11am	Tue 12pm	Tue 1pm	Tue 2pm	Tue 3pm	Tue 4pm	Tue 5pm	Tue 6pm	Tue 7pm	Tue 8pm	Tue 9pm	Tue 10pm	Tue 11pm	Wed 12am	Wed 1am	Wed 2am	Wed 3am	Wed 4am	Wed 5am	Wed 6am	Wed 7am	Wed 8am	Wed 9am	Wed 10am	Wed 11am
610 Bridge	10	10	10	10	10	10	10	10	10	10	10	10	10	10	10	10	10	10	10	10	10	10	10	10	10	10	10	10	10	10	10	10	10	10	10	10
Kinder 1	10	10	10	10	10	10	10	10	10	10	10	10	10	10	10	10	10	10	10	10	10	10	10	10	10	10	10	10	10	10	10	10	10	10	10	10
Greens Bayou	10	10	10	10	10	10	10	10	10	10	10	10	10	10	10	10	10	10	10	10	10	10	10	10	10	10	10	10	10	10	10	10	10	10	10	10
Shell Crude	10	10	10	10	10	10	10	10	10	10	10	10	10	10	10	10	10	10	10	10	10	10	10	10	10	10	10	10	10	10	10	10	10	10	10	10
Lynchburg Ferries	10	10	10	10	10	10	10	10	10	10	10	10	10	10	10	10	10	10	10	10	10	10	10	10	10	10	10	10	10	10	10	10	10	10	10	10
Exxon 3	10	10	10	10	10	10	10	10	10	10	10	10	10	10	10	10	10	10	10	10	10	10	10	10	10	10	10	10	10	10	10	10	10	10	10	10
Morgans Point	10	10	10	10	10	10	10	10	10	10	10	10	10	10	10	10	10	10	10	10	10	10	10	10	10	10	10	10	10	10	10	10	10	10	10	10
75/76	10	10	10	10	10	10	10	10	10	10	10	10	10	10	10	10	10	10	10	10	10	10	10	10	10	10	10	10	10	10	10	10	10	10	10	10
63/64	10	10	10	10	10	10	10	10	10	10	10	10	10	10	10	10	10	10	10	10	10	10	10	10	10	10	10	10	10	10	10	10	10	10	10	10
51/52	10	10	10	10	10	10	10	10	10	10	10	10	10	10	10	10	10	10	10	10	10	10	10	10	10	10	10	10	10	10	10	10	10	10	10	10
37/38	10	10	10	10	10	10	10	10	10	10	10	10	10	10	10	10	10	10	10	10	10	10	10	10	10	10	10	10	10	10	10	10	10	10	10	10
25/26	10	10	10	10	10	10	10	10	10	10	10	10	10	10	10	10	10	10	10	10	10	10	10	10	10	10	10	10	10	10	10	10	10	10	10	10
11/12	10	10	10	10	10	10	10	10	10	10	10	10	10	10	10	10	10	10	10	10	10	10	10	10	10	10	10	10	10	10	10	10	10	10	10	10
1 & 2 Bravo	10	10	10	10	10	10	10	10	10	10	10	10	10	10	10	10	10	10	10	10	10	10	10	10	10	10	10	10	10	10	10	10	10	10	10	10

NOTE: This is automated data that may/may not agree with the official BAM thinking that's found on the daily slides or special visibility report slides. This data should be used as a guide only

Houston Pilots Wind Chart



Forecast Confidence



Example

Sustained wind 13 Knots
Gusts 18 Knots
Wind from the N

WS: 13
G:18
N

Time Knots	Tue 12am	Tue 1am	Tue 2am	Tue 3am	Tue 4am	Tue 5am	Tue 6am	Tue 7am	Tue 8am	Tue 9am	Tue 10am	Tue 11am	Tue 12pm	Tue 1pm	Tue 2pm	Tue 3pm	Tue 4pm	Tue 5pm	Tue 6pm	Tue 7pm	Tue 8pm	Tue 9pm	Tue 10pm	Tue 11pm	Wed 12am	Wed 1am	Wed 2am	Wed 3am	Wed 4am	Wed 5am	Wed 6am	Wed 7am	Wed 8am	Wed 9am	Wed 10am	Wed 11am
610 Bridge	4	3	3	3	3	2	3	4	4	7	7	8	8	8	8	8	7	7	7	6	6	6	5	6	5	5	5	5	5	6	6	6	6	7	8	9
	8	9	9	9	10	10	11	12	12	16	15	13	12	11	11	12	12	12	11	10	10	9	8	8	8	8	8	8	8	9	9	9	9	11	13	13
	N	NNE	NNE	NNE	NE	ENE	ENE	ENE	E	E	E	ESE	ESE	ESE	ESE	ESE	ESE	ESE	ESE	ESE	ESE	E	E	E	E	E	E	E	E	E	E	E	ESE	ESE		
Kinder 1	4	3	3	3	3	3	3	4	4	7	7	8	8	8	8	8	7	7	7	6	6	6	5	5	5	5	5	5	5	6	6	6	6	7	8	9
	8	9	9	10	10	10	11	12	11	17	15	14	12	12	12	12	12	11	11	10	9	9	9	8	9	8	8	8	8	9	9	9	9	11	13	13
	N	NNE	NNE	NNE	NE	ENE	ENE	ENE	E	E	E	ESE	ESE	ESE	ESE	ESE	ESE	ESE	ESE	ESE	ESE	E	E	E	E	E	E	E	E	E	E	E	ESE	ESE		
Greens Bayou	4	3	3	4	3	3	3	4	4	7	7	8	8	8	8	8	7	7	6	6	6	6	5	5	5	5	5	5	5	6	6	6	6	7	8	9
	8	9	10	10	10	10	11	11	11	17	15	14	12	11	12	12	11	11	10	9	9	8	8	8	8	8	7	8	8	8	9	9	9	11	12	13
	N	NNE	NNE	NE	NE	NE	ENE	ENE	E	E	E	ESE	ESE	ESE	ESE	ESE	ESE	ESE	ESE	ESE	ESE	E	E	E	E	E	E	E	E	E	E	E	ESE	ESE		
Shell Crude	4	3	3	4	2	2	3	3	4	7	7	8	8	8	8	8	7	7	7	6	6	6	5	5	5	5	5	5	5	6	6	6	6	8	8	9
	8	8	10	11	10	10	11	11	11	17	15	14	12	11	12	12	12	11	10	9	9	8	8	8	8	8	8	7	8	8	9	9	10	11	13	13
	NE	N	NNE	NE	NE	NE	ENE	ENE	E	E	E	ESE	ESE	ESE	ESE	ESE	ESE	ESE	ESE	ESE	ESE	E	E	E	E	E	E	E	E	E	E	E	E	ESE		
Lynchburg Ferries	4	3	4	4	3	3	3	3	4	7	7	8	7	7	8	8	8	7	7	7	6	6	6	6	6	6	6	5	6	6	6	6	7	8	9	9
	7	9	10	11	11	11	11	11	11	17	15	14	12	11	11	12	11	11	10	9	9	9	8	8	8	8	8	8	8	9	10	11	12	12	12	
	S	N	NNE	NE	NE	NE	ENE	ENE	E	E	E	ESE	ESE	ESE	ESE	ESE	ESE	ESE	ESE	ESE	ESE	E	E	E	E	E	E	E	E	E	E	E	ESE			
Exxon 3	4	4	4	5	4	3	3	3	4	7	8	8	7	7	8	9	8	8	7	7	7	7	6	6	6	6	6	6	7	7	7	7	8	9	9	
	8	9	11	12	11	11	11	11	12	17	15	14	12	11	11	12	12	11	10	10	10	9	9	9	9	8	8	8	8	9	9	10	12	12	13	
	W	ENE	NNE	NE	NE	ENE	ENE	ENE	E	E	E	ESE	ESE	ESE	ESE	ESE	ESE	ESE	ESE	ESE	ESE	E	E	E	E	E	E	E	E	E	E	ESE				
Morgans Point	4	5	5	6	6	6	6	6	7	9	9	8	7	8	8	9	10	9	9	9	9	8	8	7	7	7	7	7	8	8	8	8	9	9	10	10
	8	10	12	12	12	12	12	12	13	17	16	15	13	12	12	13	13	12	11	11	11	10	9	9	9	9	9	9	10	10	11	11	12	13	13	
	NNW	ENE	NNE	NE	NE	ENE	ENE	ENE	E	E	E	ESE	ESE	ESE	ESE	ESE	ESE	ESE	ESE	ESE	ESE	E	E	E	E	E	E	E	E	E	E	ESE				
75/76	6	7	9	10	11	11	12	12	12	12	11	10	8	8	8	10	11	11	11	11	10	9	9	9	9	9	9	10	9	10	10	11	11	11	11	11
	9	10	12	13	13	13	14	15	16	17	16	16	14	13	13	14	14	13	12	12	12	11	11	11	10	10	10	11	11	12	12	13	13	13	14	
	SW	N	NNE	NE	ENE	ENE	ENE	ENE	E	E	E	ESE	ESE	ESE	ESE	ESE	ESE	ESE	ESE	ESE	ESE	E	E	E	E	E	E	E	E	E	E	ESE				
63/64	6	9	10	12	12	12	13	12	13	12	11	11	9	8	8	11	11	12	11	11	10	10	10	9	10	10	10	10	10	11	11	12	12	12	11	12
	9	11	13	14	14	13	15	17	18	17	17	16	15	13	14	14	14	13	13	12	12	11	11	11	10	10	11	11	11	12	13	13	13	14	15	
	NE	N	NE	NE	ENE	ENE	ENE	ENE	E	E	E	ESE	ESE	ESE	ESE	ESE	ESE	ESE	ESE	ESE	ESE	E	E	E	E	E	E	E	E	E	E	ESE				
51/52	5	8	9	12	12	12	12	12	12	12	12	12	10	8	9	11	11	11	11	10	10	9	9	9	9	9	9	9	10	10	11	11	11	12	13	
	9	11	13	14	15	15	17	17	17	17	17	17	15	13	14	14	13	13	12	12	11	11	11	10	10	10	10	11	11	12	12	13	13	14	15	
	N	NNE	NE	NE	NE	ENE	ENE	ENE	E	E	E	ESE	ESE	ESE	ESE	ESE	ESE	ESE	ESE	ESE	ESE	E	E	ESE	ESE	ESE	ESE	ESE	ESE	ESE	ESE	ESE	ESE			
37/38	6	8	9	11	12	11	12	11	12	12	13	13	11	9	9	11	11	11	11	10	10	9	9	9	9	9	9	9	9	10	11	11	11	12	13	
	10	10	13	14	16	16	17	17	16	17	17	17	15	13	13	13	13	12	12	12	11	10	10	10	10	10	10	10	10	11	11	12	13	14	15	
	NNE	NNE	NE	NE	NE	ENE	ENE	ENE	E	E	E	ESE	ESE	ESE	ESE	ESE	ESE	ESE	ESE	ESE	ESE	E	E	ESE	ESE	ESE	ESE	ESE	ESE	ESE	ESE	ESE	ESE			
25/26	5	7	9	10	10	10	10	10	11	12	12	13	11	10	10	11	10	10	9	9	9	8	8	8	8	8	8	8	8	9	9	10	10	11	12	
	9	11	13	15	17	17	17	16	16	16	16	17	15	13	13	13	12	12	11	11	11	10	10	10	10	10	10	10	10	11	11	12	12	13	15	
	NNE	NNE	NE	NE	NE	ENE	ENE	ENE	E	E	E	ESE	ESE	ESE	ESE	ESE	ESE	ESE	ESE	ESE	ESE	ESE	ESE	ESE	ESE	ESE	ESE	ESE	ESE	ESE	ESE	ESE	ESE			
11/12	5	7	9	10	11	10	11	12	12	13	13	13	12	11	11	11	11	10	10	10	9	9	9	9	9	9	9	9	9	10	10	10	10	11	12	
	10	13	14	15	16	17	16	17	16	16	16	17	15	13	13	12	12	12	12	11	11	11	11	11	10	10	10	10	10	11	11	12	12	12	13	
	NNE	NNE	NE	NE	NE	ENE	ENE	ENE	E	E	E	ESE	ESE	ESE	ESE	ESE	ESE	ESE	ESE	ESE	ESE	ESE	ESE	ESE	ESE	ESE	ESE	ESE	ESE	ESE	ESE	ESE	ESE			
1 & 2 Bravo	7	10	12	12	14	14	15	15	15	15	15	15	14	12	12	12	12	12	12	12	12	12	12	12	12	12	12	12	12	12	12	12	12	12	13	
	11	13	15	15	17	16	17	16	17	16	17	17	15	13	13	13	13	13	13	13	13	13	13	13	13	12	12	12	12	13	13	13	13	14	14	
	NNE	NE	NE	NE	NE	ENE	ENE	ENE	E	E	E	ESE	ESE	ESE	ESE	ESE	ESE	ESE	ESE	ESE	ESE	ESE	ESE	ESE	ESE	ESE	ESE	ESE	ESE	ESE	ESE	ESE	ESE			

NOTE: This is automated data that may/may not agree with the official BAM thinking that's found on the daily slides or special visibility report slides. This data should be used as a guide only

Houston Pilots: Tue. 12/19/2023

Forecast Discussion

Precip: Dry conditions are favored for today.

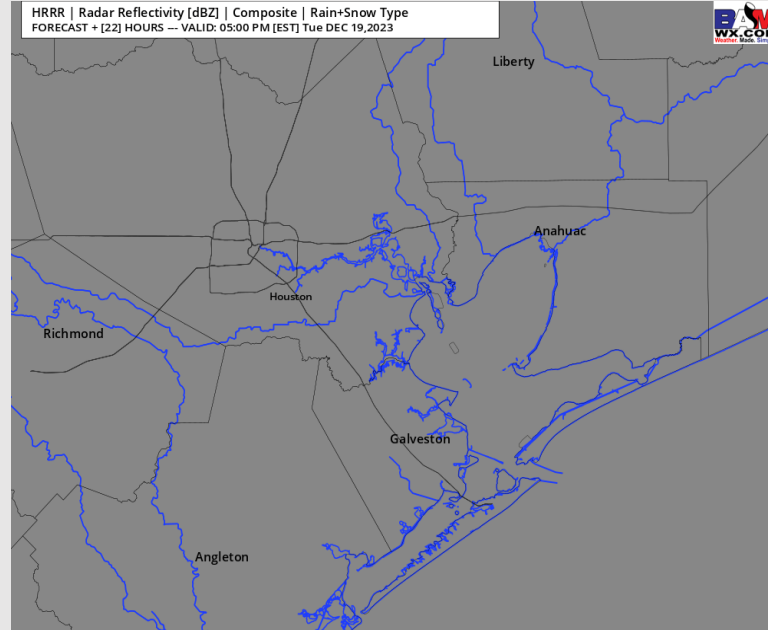
Wind: Winds will slowly veer the entire day. Winds currently out of the NE will become easterly by 9 AM and out of the ESE by 3-4 PM. **N**

Morgan's Point: 3 - 8 kts prior to 9 AM. After 9 AM winds increase to 6 - 11 kts. By 6 PM winds revert to 3 - 8 kts. **S of Morgan's Point:** 10 -15 kts through 3 PM. By 3 PM winds will decrease slightly to 7 -12 kts. Boarding Station winds will increase to 13 - 18 kts by 5 AM. After 3 PM winds calm a touch to 11 - 16 kts.

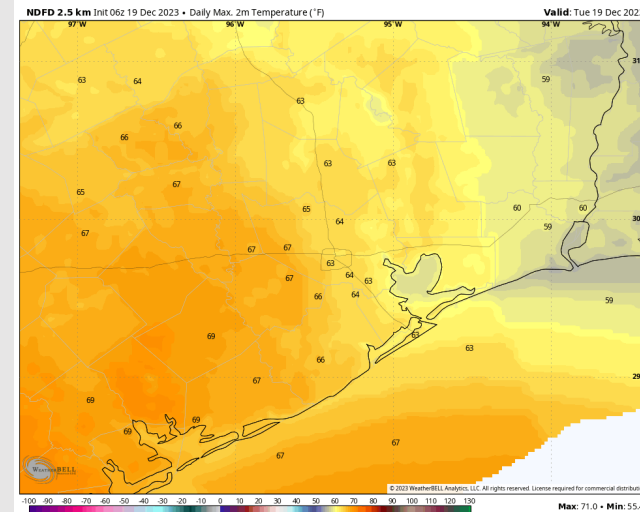
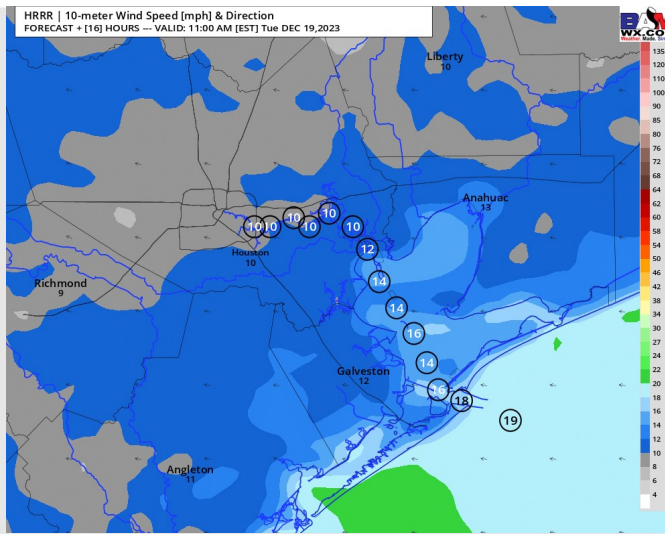
High Temps: **N of Morgan's Point:** Low 60s. **S of Morgan's Point:** Upper 50s F/Near 60 F.

Visibility: Not anticipating any visibility concerns

Precip Image: 4 PM CT



Wind Speed:
10 AM CT



High Temps
Today

Houston Pilots: Wed. 12/20/2023

Forecast Discussion

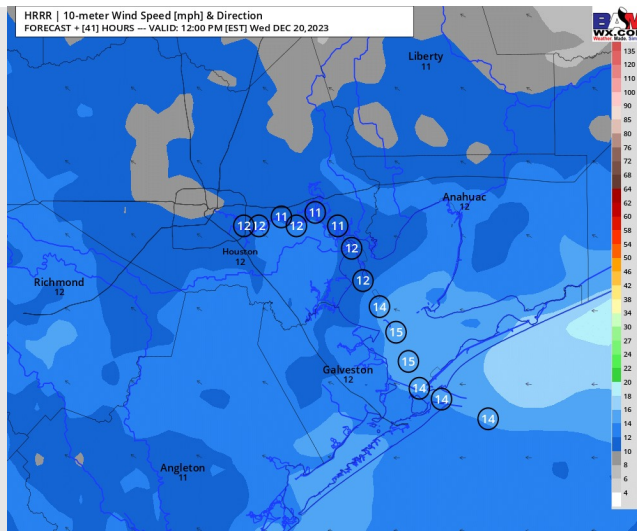
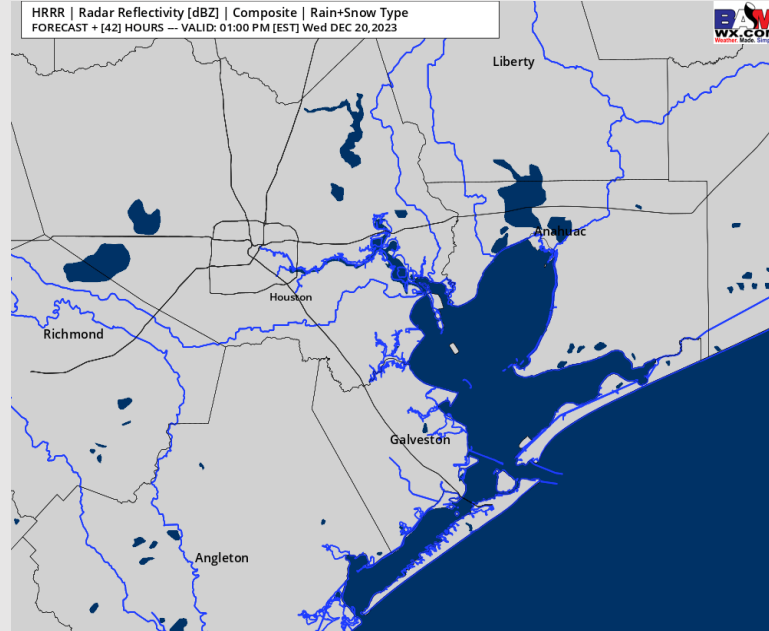
Precip: Dry conditions favored for Wednesday.

Wind: Winds will be out of the SE/ESE the entire day. **N of Morgan's Point:** Winds will be at 5-10 kts in the AM, increasing to 7 - 12 kts in the afternoon. After ~5 PM winds return to 5- 10 kts. **S of Morgan's Point:** Winds will start off at 9-14 kts through 6 PM before increasing to 12-17 kts the rest of the evening.

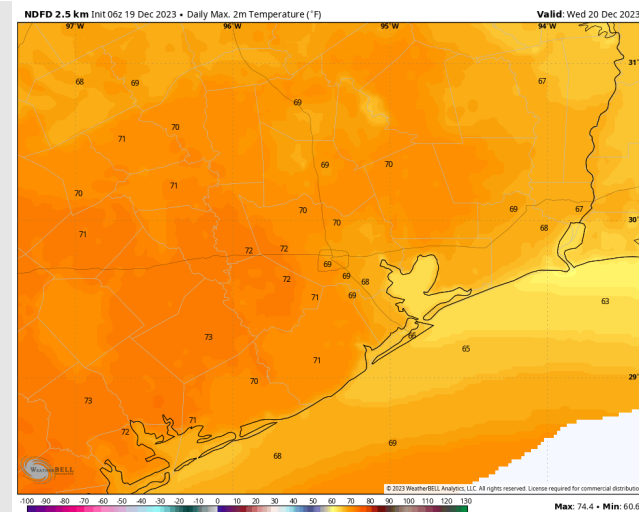
High Temps: **N of Morgan's Point:** Upper 60s to 70 F. **S of Morgan's Point:** Mid 60s F.

Visibility: Not favoring fog at this time for WED.

Precip Image: 12 PM CT



Wind Speed:
11 AM CT



High Temps
Wednesday

Houston Pilots: Thu. 12/21/2023

Forecast Discussion

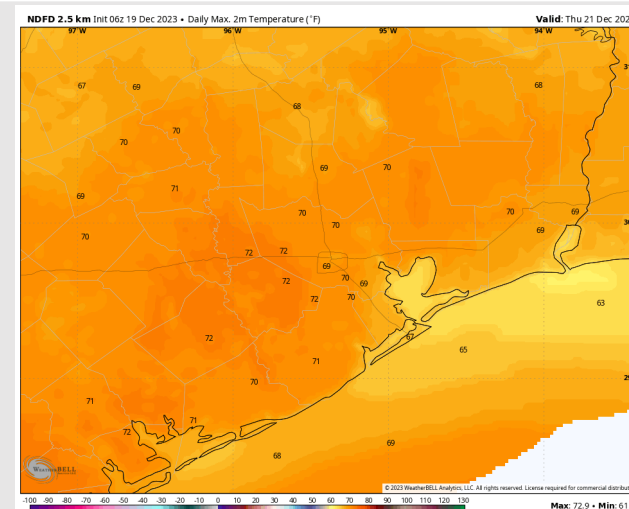
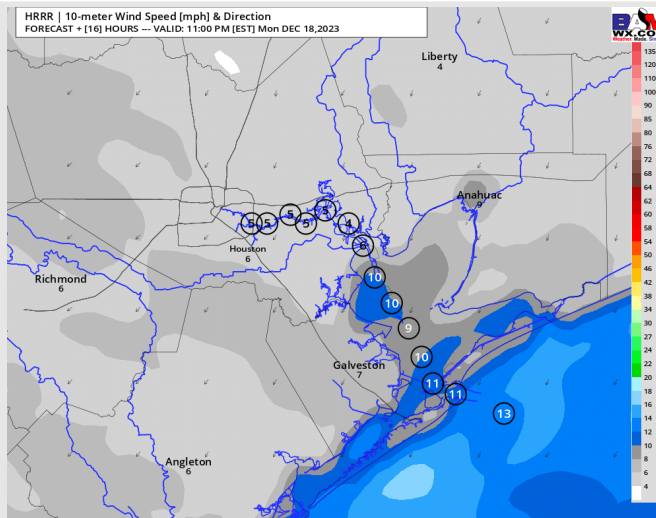
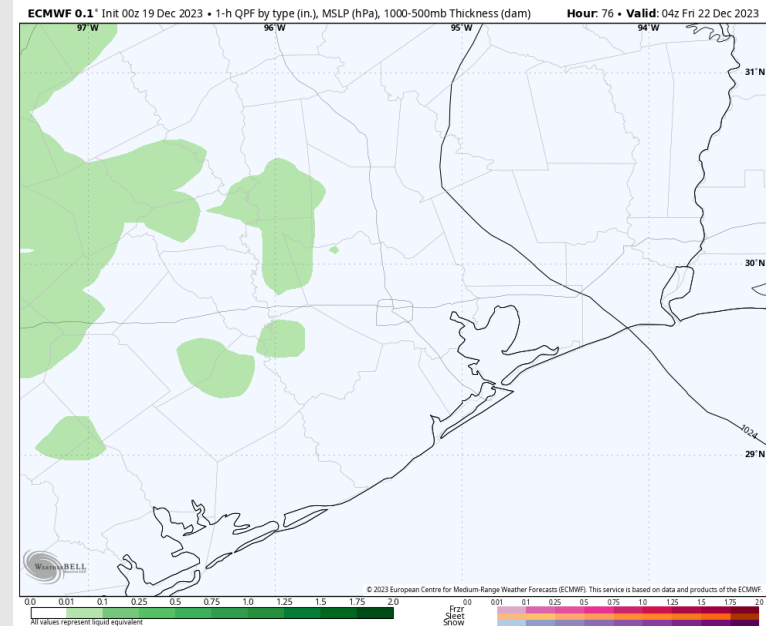
Precip: Dry conditions favored through 9 PM THU before a low-end risk (10%) of light showers out ahead of front arriving FRI AM

Wind: Winds remain out of the ESE throughout THU. **N of Morgan's Point:** Sustained at 9-14 kts. **S of Morgan's Point:** 11-16 kts the entire day, with the Boarding Station Slightly higher at 13-18 kts

High Temps: **N of Morgan's Point:** Near 70 F. **S of Morgan's Point:** Mid 60s F

Visibility: A low end risk for fog will be present on THU.

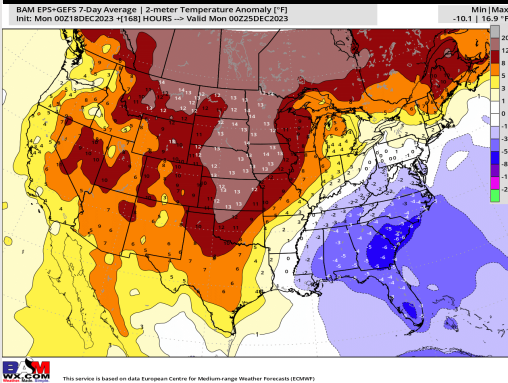
Precip Image: 10 PM CT



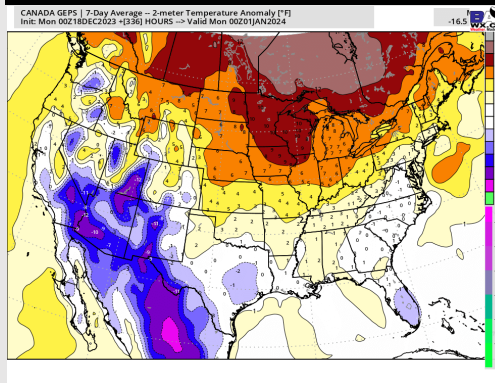
High Temps
Thursday

Houston Pilots: 12/19/23

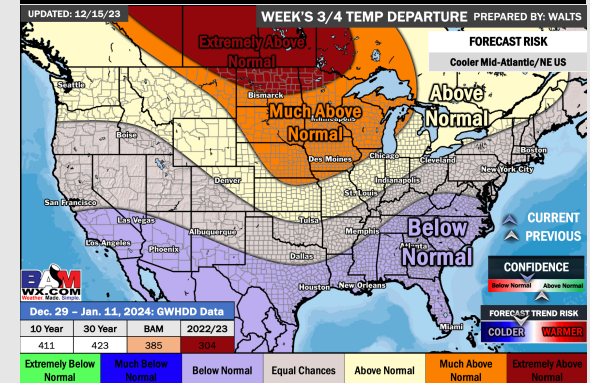
Next 7 Day Temperature Departure



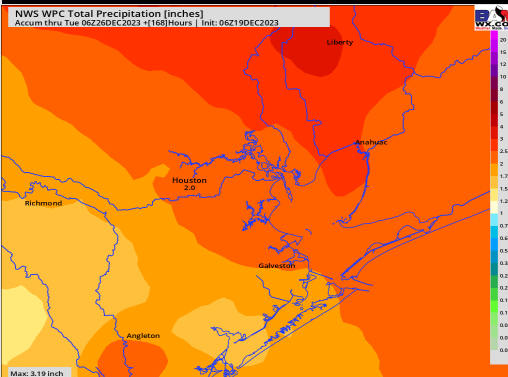
8-14 Day Temperature Departure



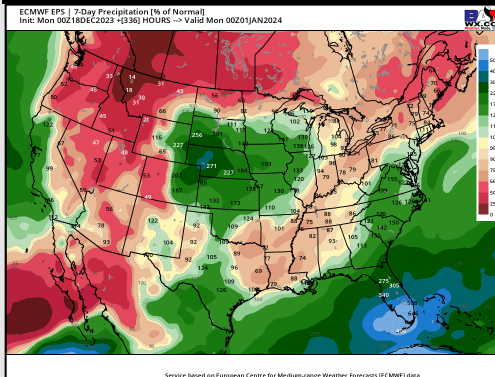
15-30 Day Temperature Departure



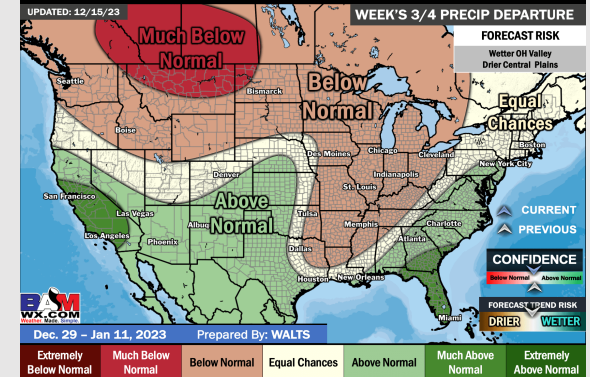
Next 7 Day Total Precipitation



8-14 Day % of Average Precip.



15-30 Day % of Average Precip.



- The next best shot for rain will occur THU/FRI and into the weekend, bringing periods of moderate/heavy rain. Seasonable/slightly above normal temps are favored this week.
- Seasonal precipitation chances and seasonal temperatures are expected into the week 2 timeframe.
- Below normal temperatures and slightly above normal chances for precipitation are favored in the weeks ¾ timeframe.