

Houston Pilots Forecast Package



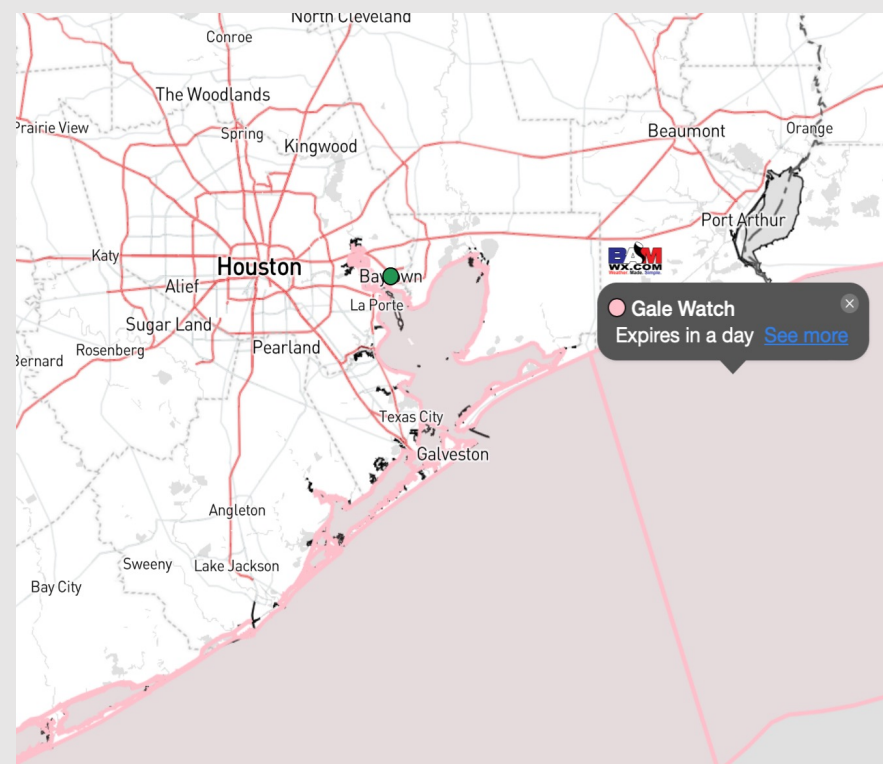
Updated: 1:10 AM CT

Saturday, December 9, 2023

Forecaster: Tyler Riggles

Weather Headlines

- Strong storms chances arrive this evening as a cold front pushes southeast. Wind gusts upwards of 35-45 kts in play this evening. **Check the Day 1 slide below for more details.**
- Monitor patchy fog development within the bay this morning ahead of the front. Fog risks for Stations expected to end near 5 AM as better fog potential slides E.
- Drier pattern ahead after front-associated rains move out late this evening.



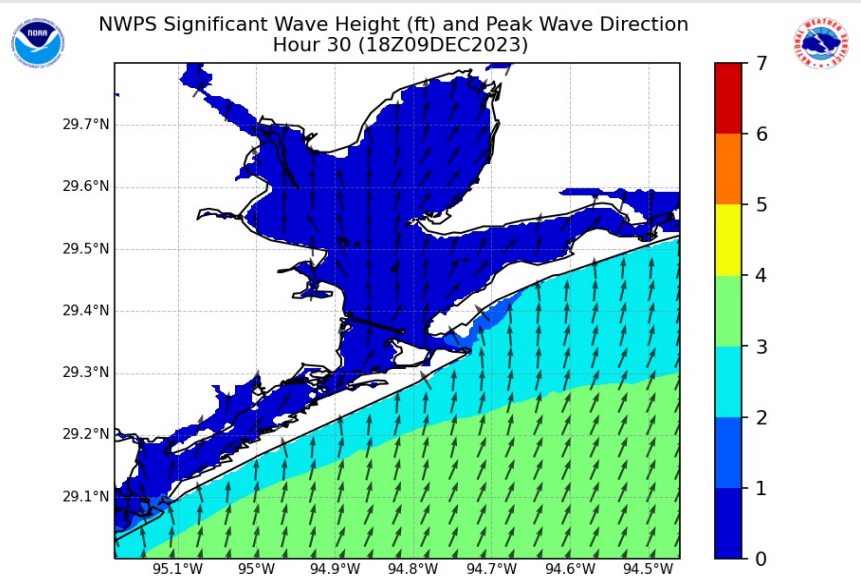
Radar/NWS Alerts: 1:05 AM CT



As always, please do not hesitate to reach out to us with any forecast questions via the chat option on the Weather Porthole or our on-call number, **(317)-560-8122** press 1 for forecast questions.

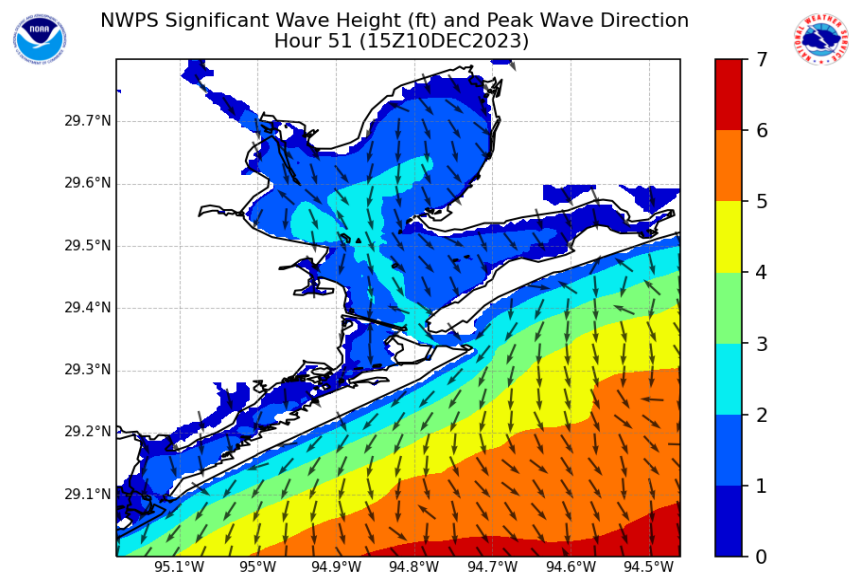
Houston Pilots Wave Height Update

Significant Wave Height Image



12 PM CST
Saturday

The top image shows wave heights around 12 PM Saturday. Wave heights for almost all stations around 1 ft. Near stations 11/12 and the Boarding Station, waves may increase to 2-3 ft.



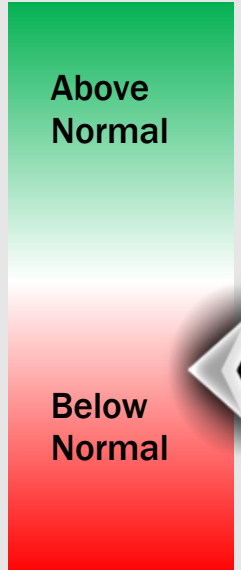
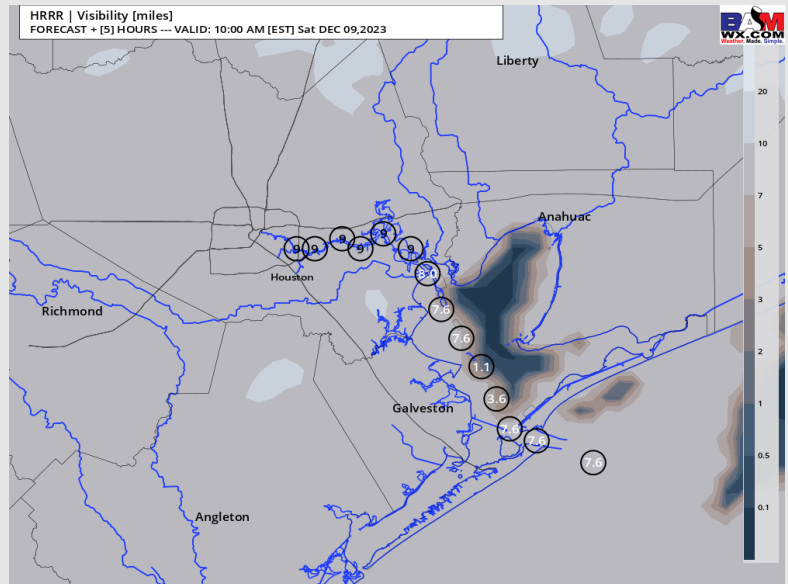
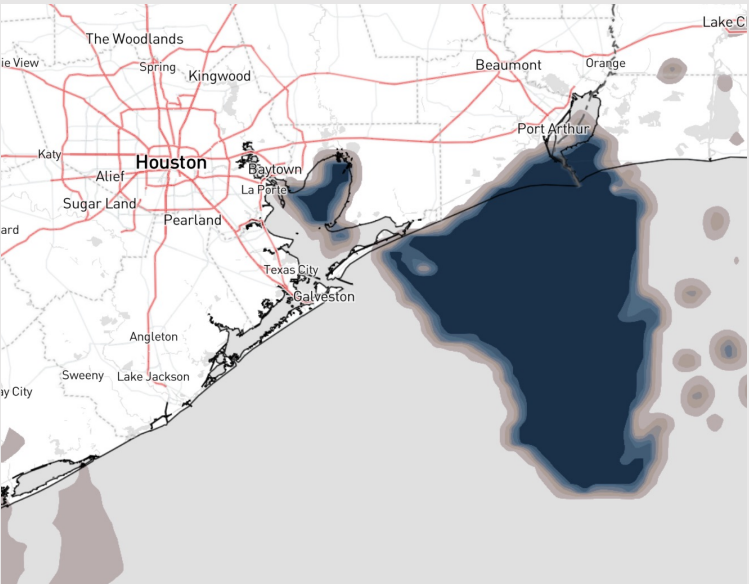
9 AM CST
Sunday

Moving into the overnight Saturday into Sunday AM, wave heights would risk to 2-3 ft for station 51/52 to station 11/12. The Boarding Station may be at risk for waves nearing 3-4 ft.

Houston Pilots Visibility Report



VISIBILITY AS OF 6:00 AM-CT 9 AM-CT VISIBILITY Confidence



TIMEFRAME DISCUSSED	THREAT
CURRENT- 6 PM SAT	Low

- Continuing to monitor the patchy fog that lingers into the E. half of Galv. Bay this morning that is reducing visibility down to 2-4 miles with locally more dense fog reducing visibility to 1 mile or less.
- Expecting overall risk for stations to see reduced visibility to be fairly low as this fog is favored to sit just east, however a few instances of visibility being reduced to 1-3 miles will be a risk throughout the 6 PM-CT timeframe before the cold front pushes through, shifting strong winds out of the N. Isolated instances of less than a mile cannot be ruled out.
- Stations from Morgan's Point to the Boarding Station have the greatest risk of seeing this fog bleed west just enough to create impacts, however majority of fog is favored to remain E. of stations.
- Confidence is lower for exact end time, as fog could break up and clear out before 6 PM-CT.

Houston Pilots Extended Range Visibility Report



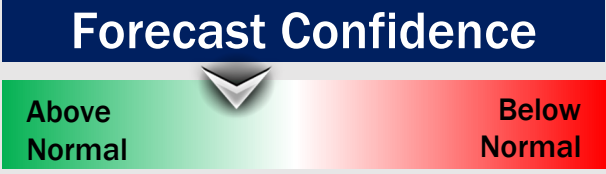
Tuesday 12/12/23

No fog concerns Tuesday.



Wednesday 12/13/23

No fog concerns Wednesday.



Thursday 12/13/23

No fog concerns Thursday.



Chance for Fog

Tuesday AM	Unlikely
Tuesday PM	Unlikely
Wednesday AM	Unlikely
Wednesday PM	Unlikely
Thursday AM	Unlikely
Thursday PM	Unlikely

Houston Pilots Visibility Chart (miles)



Forecast Confidence

Above Normal

Below Normal

Time	Sat 12am	Sat 1am	Sat 2am	Sat 3am	Sat 4am	Sat 5am	Sat 6am	Sat 7am	Sat 8am	Sat 9am	Sat 10am	Sat 11am	Sat 12pm	Sat 1pm	Sat 2pm	Sat 3pm	Sat 4pm	Sat 5pm	Sat 6pm	Sat 7pm	Sat 8pm	Sat 9pm	Sat 10pm	Sat 11pm	Sun 12am	Sun 1am	Sun 2am	Sun 3am	Sun 4am	Sun 5am	Sun 6am	Sun 7am	Sun 8am	Sun 9am	Sun 10am	Sun 11am		
610 Bridge	10	10	10	10	10	7	6	6	6	10	10	10	10	10	10	10	10	10	10	10	10	10	10	10	10	10	10	10	10	10	10	10	10	10	10	10	10	10
Kinder 1	10	10	10	10	10	7	6	6	6	10	10	10	10	10	10	10	10	10	10	10	10	10	10	10	10	10	10	10	10	10	10	10	10	10	10	10	10	10
Greens Bayou	10	10	10	10	10	7	6	6	6	10	10	10	10	10	10	10	10	10	10	10	10	10	10	10	10	10	10	10	10	10	10	10	10	10	10	10	10	10
Shell Crude	10	10	10	10	10	7	6	6	6	10	10	10	10	10	10	10	10	10	10	10	10	10	10	10	10	10	10	10	10	10	10	10	10	10	10	10	10	10
Lynchburg Ferries	10	10	10	10	10	7	6	6	6	10	10	10	10	10	10	10	10	10	10	10	10	10	10	10	10	10	10	10	10	10	10	10	10	10	10	10	10	10
Exxon 3	10	10	10	10	10	7	6	6	6	10	10	10	10	10	10	10	10	10	10	10	10	10	10	10	10	10	10	10	10	10	10	10	10	10	10	10	10	10
Morgans Point	10	10	10	10	8	6	6	6	6	10	10	10	10	10	10	10	10	10	10	10	10	10	10	10	10	10	10	10	10	10	10	10	10	10	10	10	10	10
75/76	10	10	10	10	8	8	6	5	6	10	10	10	10	10	10	10	10	10	10	10	10	10	10	10	10	10	10	10	10	10	10	10	10	10	10	10	10	10
63/64	10	10	10	10	8	8	6	5	6	10	10	10	10	10	10	10	10	10	10	10	10	10	10	10	10	10	10	10	10	10	10	10	10	10	10	10	10	10
51/52	10	10	9	8	8	8	6	6	5	10	10	10	10	10	10	10	10	10	10	10	10	10	10	10	10	10	10	10	10	10	10	10	10	10	10	10	10	10
37/38	10	10	8	8	8	9	6	6	6	10	10	10	10	10	10	10	10	10	10	10	10	10	10	10	10	10	10	10	10	10	10	10	10	10	10	10	10	10
25/26	10	10	8	8	10	10	6	6	6	10	10	10	10	10	10	10	10	10	10	10	10	10	10	10	10	10	10	10	10	10	10	10	10	10	10	10	10	10
11/12	10	10	8	8	10	10	6	6	6	10	10	10	10	10	10	10	10	10	10	10	10	10	10	10	10	10	10	10	10	10	10	10	10	10	10	10	10	10
1 & 2 Bravo	10	8	7	8	10	10	7	6	6	10	10	10	10	10	10	10	9	8	8	8	10	10	10	10	10	10	10	10	10	10	10	10	10	10	10	10	10	10

NOTE: This is automated data that may/may not agree with the official BAM thinking that's found on the daily slides or special visibility report slides. This data should be used as a guide only

Houston Pilots Wind Chart



Forecast Confidence



Example

Sustained wind 13 Knots
Gusts 18 Knots
Wind from the N

WS: 13
G:18
N

Time Knots	Sat 12am	Sat 1am	Sat 2am	Sat 3am	Sat 4am	Sat 5am	Sat 6am	Sat 7am	Sat 8am	Sat 9am	Sat 10am	Sat 11am	Sat 12pm	Sat 1pm	Sat 2pm	Sat 3pm	Sat 4pm	Sat 5pm	Sat 6pm	Sat 7pm	Sat 8pm	Sat 9pm	Sat 10pm	Sat 11pm	Sun 12am	Sun 1am	Sun 2am	Sun 3am	Sun 4am	Sun 5am	Sun 6am	Sun 7am	Sun 8am	Sun 9am	Sun 10am	Sun 11am	
610 Bridge	7	6	6	6	6	6	6	6	6	7	7	6	6	5	4	7	8	8	10	12	14	15	15	17	17	17	17	17	17	16	16	16	14	13	13	12	12
	19	18	18	17	17	18	17	17	18	17	14	12	10	9	7	10	12	16	18	20	23	23	25	25	25	26	26	26	24	24	24	22	20	19	18	18	
Kinder 1	6	5	6	6	6	6	5	5	6	7	7	6	5	5	5	7	7	8	10	12	13	15	15	16	17	17	17	16	16	15	14	13	13	12	12		
	18	17	17	17	17	18	17	17	19	17	14	12	10	9	7	10	11	12	15	18	20	23	24	25	25	26	26	25	24	23	23	22	20	19	18	18	
Greens Bayou	6	5	6	6	6	6	5	5	6	8	7	7	6	5	7	7	8	10	12	14	15	16	16	17	17	17	16	16	15	15	14	13	12	12	11		
	18	16	16	17	17	17	17	16	19	17	14	12	10	9	8	10	11	12	15	18	21	23	24	25	25	26	26	25	24	23	22	21	19	19	18	17	
Shell Crude	6	5	5	6	6	5	5	5	6	8	7	6	5	6	5	7	8	9	11	13	15	16	16	17	17	17	16	16	15	14	13	13	12	12	12		
	17	16	16	17	16	16	17	15	18	18	14	12	10	10	8	10	11	11	14	17	20	23	23	24	25	25	26	25	24	23	22	20	19	19	18	17	
Lynchburg Ferries	6	4	5	5	5	5	5	5	6	8	7	6	5	6	5	7	7	8	9	12	14	16	15	16	17	17	16	16	15	14	13	13	12	12	12		
	16	14	15	16	15	14	16	14	17	18	14	12	10	10	8	10	11	12	14	17	20	23	23	24	25	25	25	24	23	22	21	20	19	19	18	17	
Exxon 3	6	5	4	5	4	4	5	4	5	8	7	5	5	6	4	7	7	8	9	12	13	15	15	16	17	17	17	17	16	16	15	14	13	13	12	12	
	15	14	12	13	12	12	13	12	14	18	14	12	10	10	9	10	11	11	13	16	19	22	22	24	24	25	25	24	23	22	21	20	19	19	18	17	
Morgans Point	6	6	5	6	5	4	5	4	5	7	7	5	4	5	4	7	8	8	9	12	14	15	16	17	18	18	19	18	18	17	16	15	15	13	13		
	13	13	11	12	11	11	11	10	12	18	15	13	11	10	8	11	11	12	16	18	21	21	24	23	24	25	24	24	23	22	21	20	20	18	18	18	
75/76	6	7	7	7	6	5	5	4	6	7	7	6	4	5	3	8	8	9	10	13	15	16	17	19	20	21	22	22	22	21	20	18	18	16	15		
	12	13	12	13	11	11	11	9	10	17	15	12	10	10	8	11	11	12	15	18	20	22	25	24	25	26	26	26	24	23	22	21	19	19	19	19	
63/64	6	7	7	7	7	5	5	5	6	7	8	6	5	5	3	8	8	8	9	12	15	17	19	21	22	23	25	25	25	24	23	22	20	18	17		
	12	13	12	13	12	10	11	9	9	14	17	12	10	9	9	10	11	10	10	14	17	20	22	25	25	26	28	27	28	27	26	24	23	20	19	19	
51/52	5	7	6	7	8	5	5	5	5	7	8	7	6	4	8	8	8	8	10	14	17	19	21	22	24	25	25	26	25	24	22	21	18	17			
	12	13	12	13	13	10	10	9	9	12	16	13	11	10	9	10	9	9	12	16	19	22	26	25	27	28	28	29	28	27	25	24	20	20	20		
37/38	6	8	7	7	8	6	5	5	5	7	8	7	6	5	5	8	8	8	9	13	17	19	22	23	25	26	26	26	26	25	23	22	19	18			
	13	14	13	13	13	11	10	9	10	12	15	14	10	10	9	9	9	9	10	15	20	22	26	26	27	28	29	29	29	29	28	26	25	21	20	20	
25/26	7	7	7	7	7	5	5	5	5	7	8	7	6	5	6	8	8	7	7	8	11	15	18	21	22	23	24	24	24	24	23	22	21	18	17		
	14	14	13	13	13	11	11	10	11	14	14	10	9	10	10	9	8	8	10	14	21	23	27	26	28	29	29	29	29	28	27	26	22	20	20		
11/12	7	7	6	6	7	6	6	6	6	7	7	7	5	6	8	8	7	7	8	11	15	17	20	21	22	23	24	23	24	23	22	21	18	17			
	15	14	13	12	12	12	12	12	12	11	12	11	12	11	9	7	8	10	9	8	10	14	21	24	27	26	27	29	29	29	28	27	26	22	20	20	
1 & 2 Bravo	9	8	7	7	7	6	7	6	7	9	8	7	5	4	6	8	9	8	9	10	13	17	20	22	24	26	27	28	28	28	28	27	26	25	22	19	
	17	14	14	13	12	13	13	14	14	15	13	12	9	8	9	10	10	9	9	11	15	22	24	26	27	28	29	31	30	30	30	28	27	23	21	21	

NOTE: This is automated data that may/may not agree with the official BAM thinking that's found on the daily slides or special visibility report slides. This data should be used as a guide only

Houston Pilots: Sat. 12/09/2023



Forecast Discussion

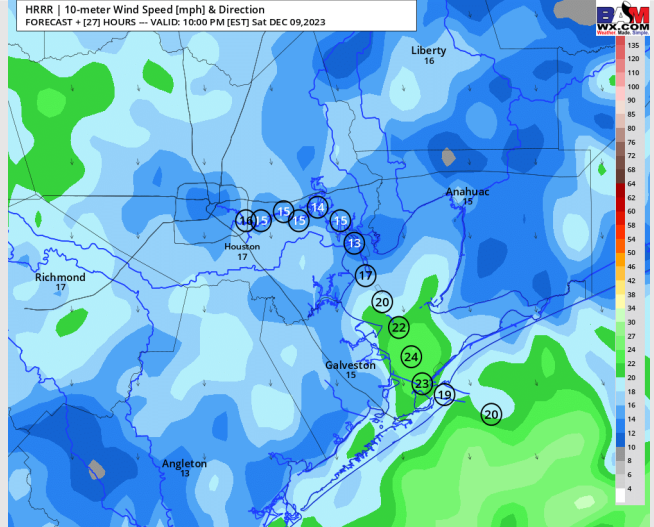
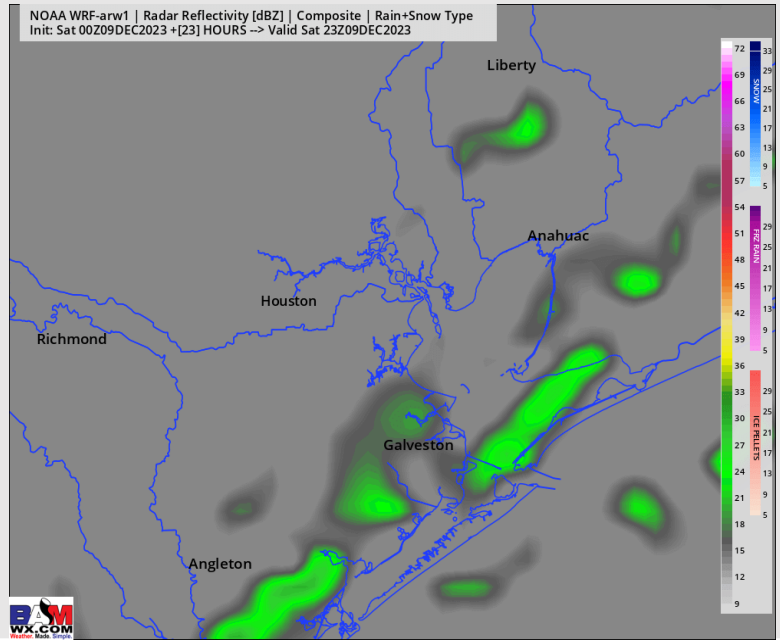
Precip: Hit/miss shower chances (20-30%) will be in play through 7 AM. A lull in precip will follow until 12 PM, when more widespread (60-70%) chances for showers and storms (some strong with potential for gusty winds) move in from the NW and remain for the rest of the day.

Wind: Winds out of the S/WSW through 5 PM, veering out of the NW after this time as the main front arrives. **N of Morgan's Point:** Sustained at 5 - 10 kts prior to 7 PM, then 9 - 14 kts for the remainder of the evening as the front arrives. **S of Morgan's Point:** 10-15 kts through 4 AM, decreasing to 8-13 kts at this time and remaining at this speed through 8 PM. After 8 PM, winds steadily increase to 20-25 kts by 12 AM. **Gusts through the AM until noon will be around 25-30 kts. Then 35-45 kts will be possible as we get beyond 7 PM through the rest of the evening.**

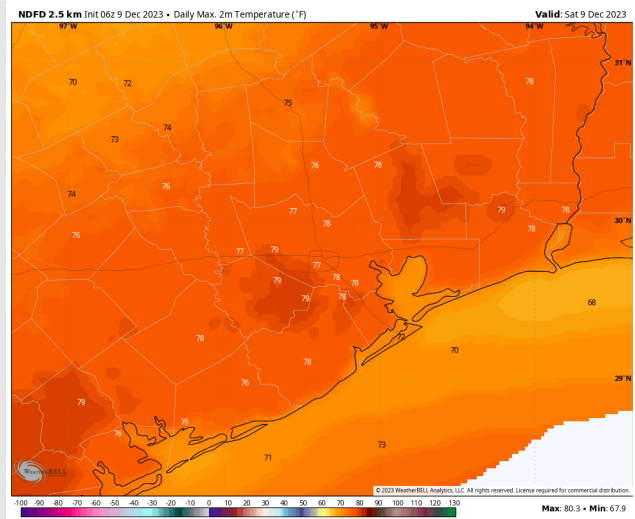
High Temps: **N of Morgan's Point:** Upper 70 F. **S of Morgan's Point:** Low 70s F.

Visibility: Watching the early AM for a potential patchy fog development within the Bay associated with the front. Risk would last until ~5 AM. **More details on visibility slide.**

Precip Image: 5 PM CT



Wind Speed:
9 PM CT



High Temps
Saturday

Houston Pilots: Sun. 12/10/2023



Forecast Discussion

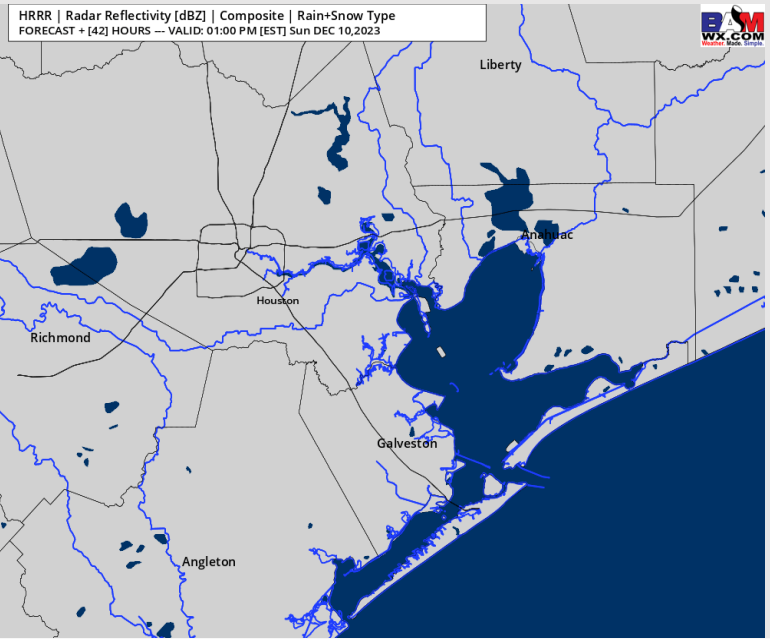
Precip: Dry conditions favored throughout the day.

Wind: Winds out of the NW will gradually calm throughout the day. **N of Morgan's Point:** Winds currently at 10-15 kts will gradually calm to 3-8 kts by 5 PM. **S of Morgan's Point:** 20-25 kt winds will sustain through 7 AM, after which time winds will be gradually calm to 5-10 kts by 6 PM.

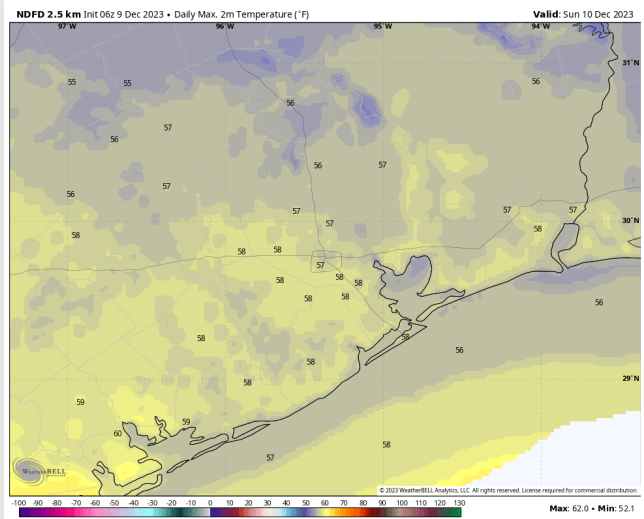
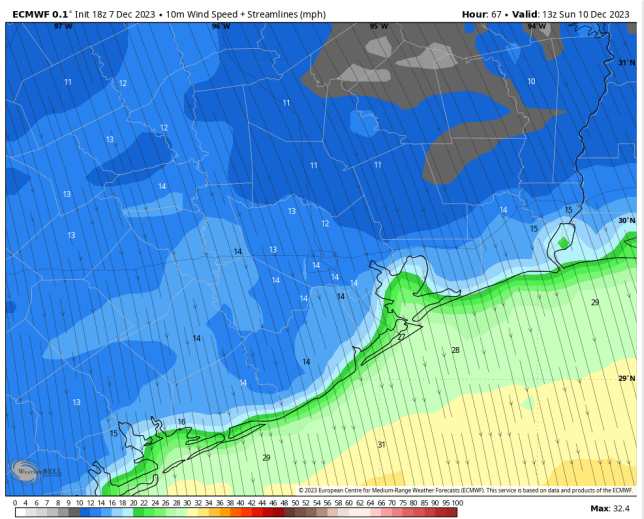
High Temps: Notable cooler behind the cold front **N of Morgan's Point:** Mid 50s F. **S of Morgan's Point:** Mid 50s F.

Visibility: Not anticipating any fog concerns Sunday.

Precip Image: 12 PM CT



Wind Speed:
7 AM CT



High Temps
Sunday

Houston Pilots: Mon. 12/11/2023



Forecast Discussion

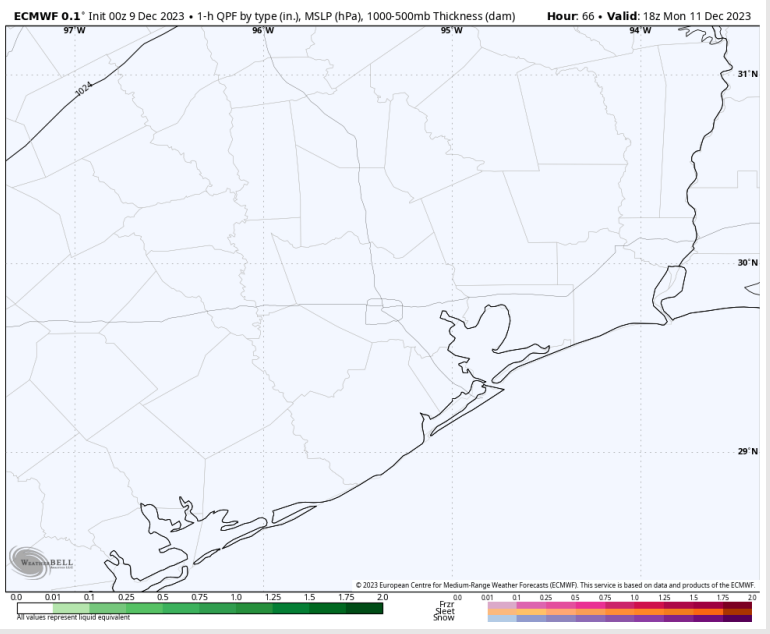
Precip: Favoring dry conditions throughout the day Monday.

Wind: Winds out of the NW will rotate out of the SE by 2 PM. **N of Morgan's Point:** 3-8 kts throughout the day. **S of Morgan's Point:** Winds of 3-8 kts will gradually increase to 7-12 kts by 6 PM.

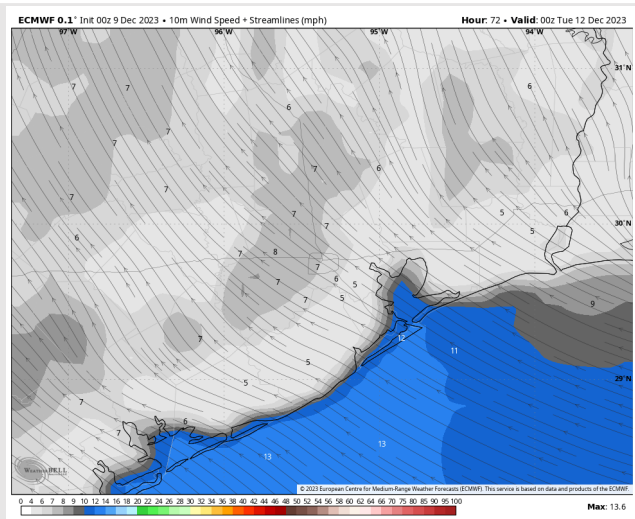
High Temps: **N of Morgan's Point:** Low 60s F. **S of Morgan's Point:** Low 60s F.

Visibility: Not anticipating any visibility concerns Monday.

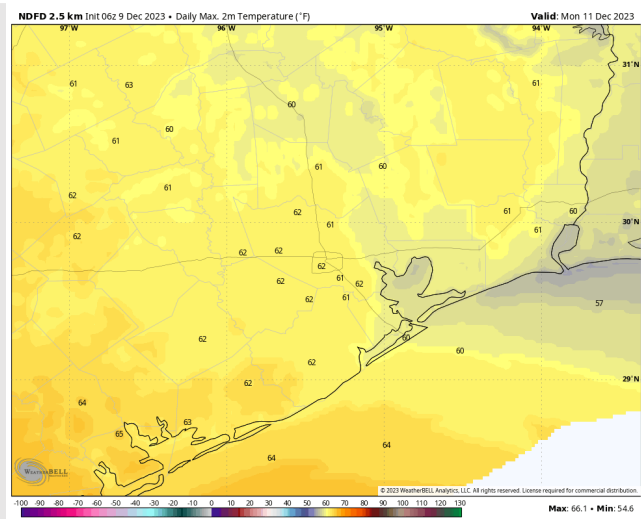
Precip Image: 12 PM CT



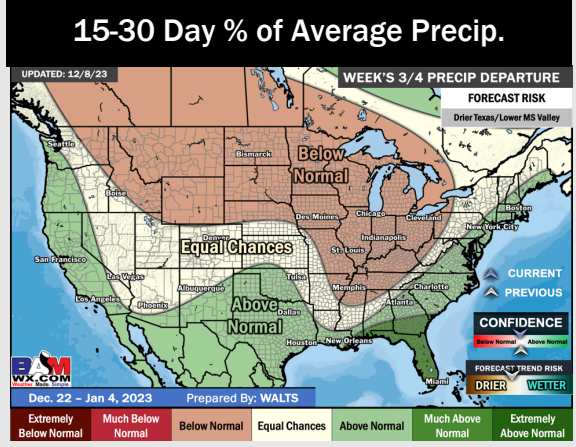
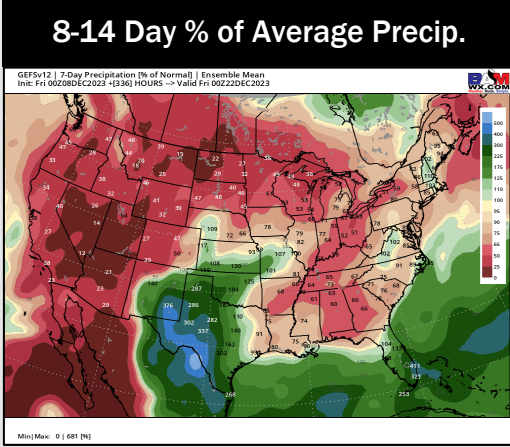
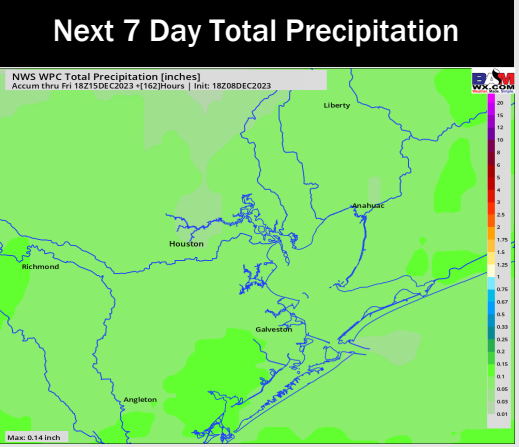
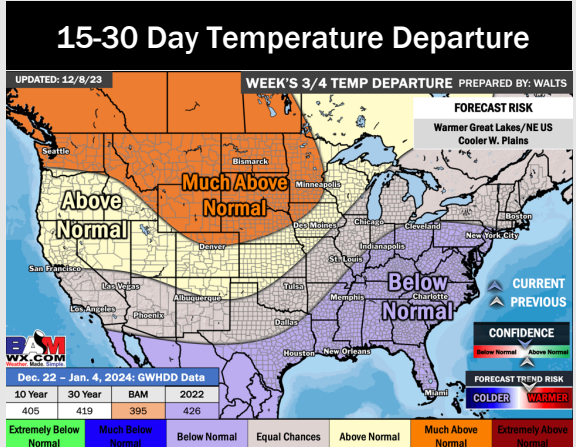
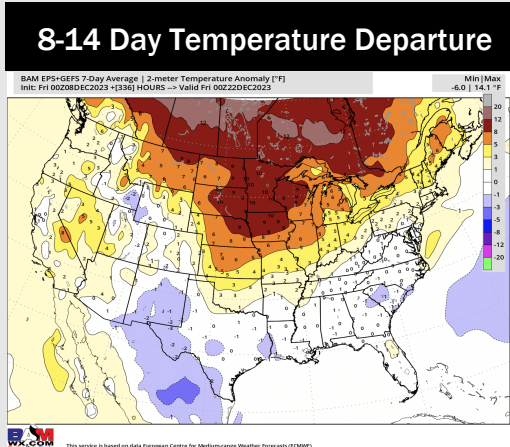
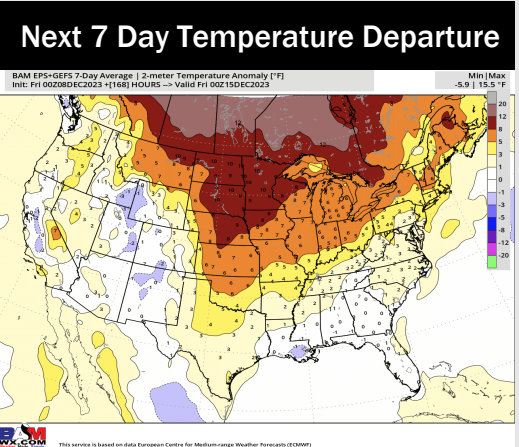
Wind Speed:
6 PM CT



High Temps
Monday



Houston Pilots: 12/9/23



- Next best shot at rain will be on Saturday via cold front. Seasonal / slightly warmer than normal weather is expected this week.
- Seasonal precipitation chances and temperatures are expected into the week 2 timeframe.
- Below normal temperatures and above normal chances for precipitation are favored in the weeks 3/4 timeframe.