

Houston Pilots Forecast Package



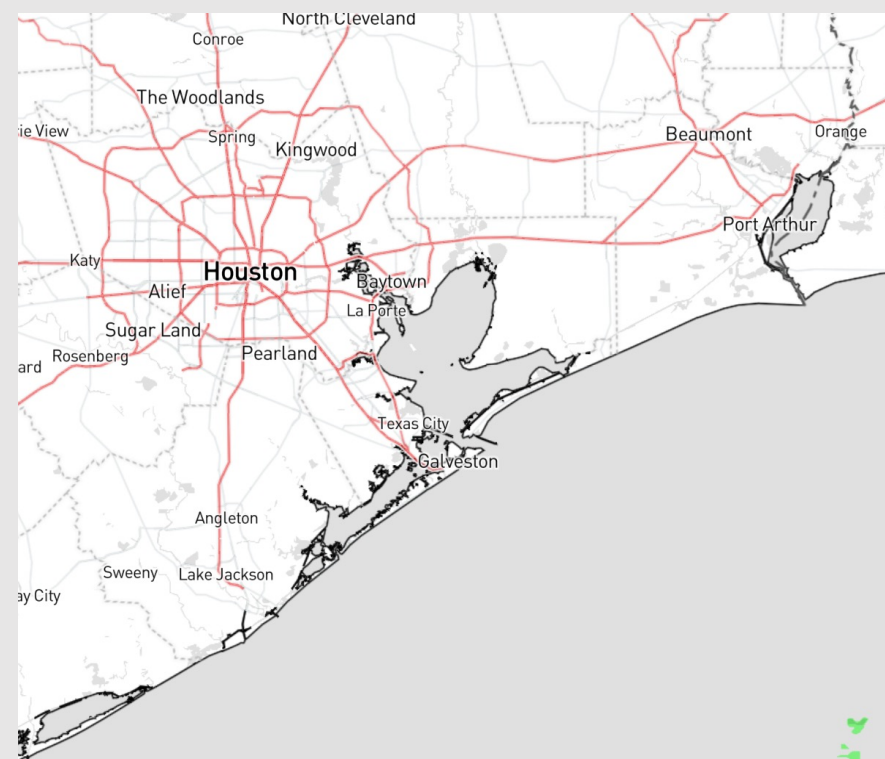
Updated: 1:00 AM CT

Friday, December 8, 2023

Forecaster: Tyler Riggles

Weather Headlines

- A few showers and isolated storms possible Friday. Strong storms chances arrive Saturday PM as cold front pushes southeast. **Keeping an eye on strong/severe potential with these storms.**
- Watching for a patchy fog development within the bay late Friday into Saturday ahead of the front.
- Wind gusts up to 20-30 kts will be possible throughout the day.



Radar/NWS Alerts: 12:50 AM CT



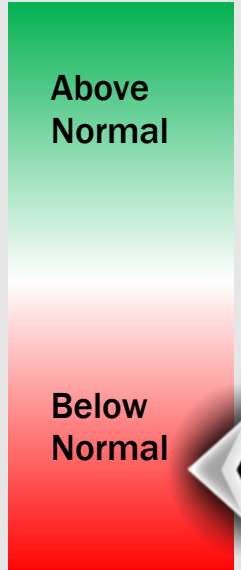
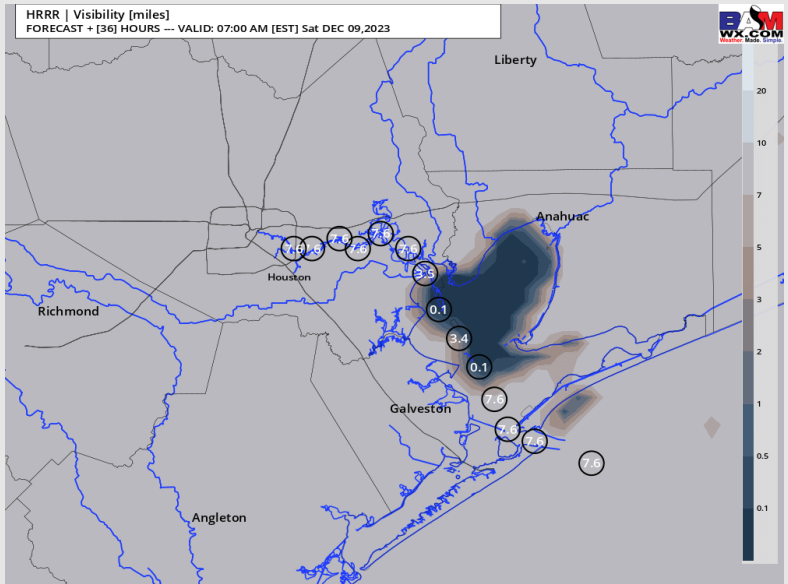
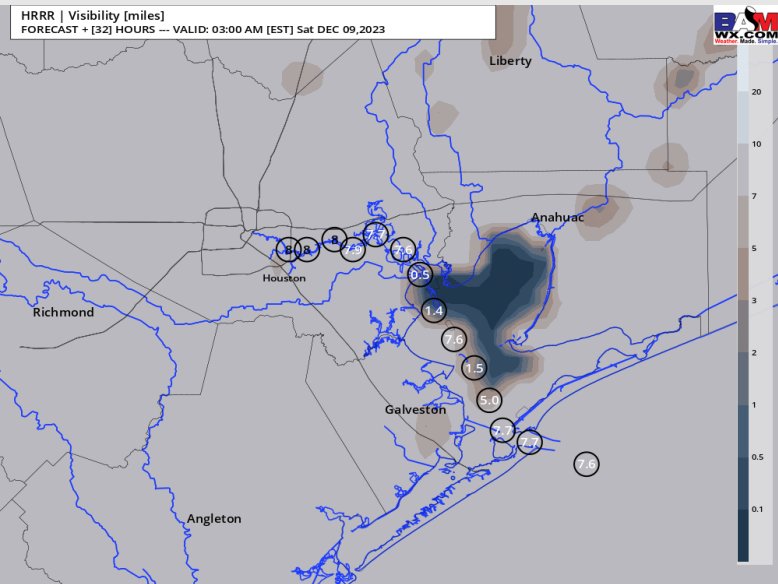
As always, please do not hesitate to reach out to us with any forecast questions via the chat option on the Weather Porthole or our on-call number, **(317)-560-8122** press 1 for forecast questions.

Houston Pilots Visibility Report



2 AM-CT SAT VISIBILITY 6 AM-CT SAT VISIBILITY

Confidence



TIMEFRAME DISCUSSED	THREAT
8 PM FRI - 12 PM SAT	Low-Med

- Keeping an eye on the potential for patchy / patchy dense fog development in the Bay late Friday night into Saturday morning out ahead of the cold front as winds will be out of the SE prior.
- Patchy fog could begin to develop as early as 8 PM-CT Friday with coverage becoming the most “widespread” between 2 AM-CT and 6 AM-CT. Between 6 AM - 11 AM-CT, coverage would then begin to once again become patchier in nature.
- Fog development would begin in the interior portion of the bay near Morgan’s Point with coverage extending toward Station 11/12 through the early AM.
- Favoring fog risk to end after 11-12 PM-CT Saturday.

Houston Pilots Extended Range Visibility Report



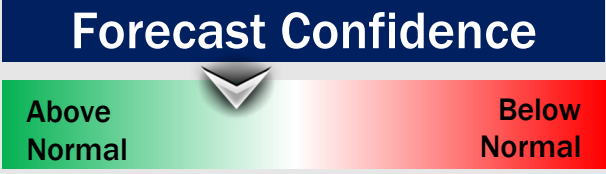
Monday 12/11/23

No fog concerns Monday.



Tuesday 12/12/23

No fog concerns Tuesday.



Wednesday 12/13/23

No fog concerns Wednesday.



Chance for Fog

Monday AM	Unlikely
Monday PM	Unlikely
Tuesday AM	Unlikely
Tuesday PM	Unlikely
Wednesday AM	Unlikely
Wednesday PM	Unlikely

Houston Pilots Visibility Chart (miles)



Forecast Confidence



Time	Fri 12am	Fri 1am	Fri 2am	Fri 3am	Fri 4am	Fri 5am	Fri 6am	Fri 7am	Fri 8am	Fri 9am	Fri 10am	Fri 11am	Fri 12pm	Fri 1pm	Fri 2pm	Fri 3pm	Fri 4pm	Fri 5pm	Fri 6pm	Fri 7pm	Fri 8pm	Fri 9pm	Fri 10pm	Fri 11pm	Sat 12am	Sat 1am	Sat 2am	Sat 3am	Sat 4am	Sat 5am	Sat 6am	Sat 7am	Sat 8am	Sat 9am	Sat 10am	Sat 11am
610 Bridge	10	10	10	10	10	10	10	10	8	10	10	10	10	10	10	10	10	10	10	10	10	6	6	7	8	8	8	8	6	6	4	4	4	7	10	10
Kinder 1	10	10	10	10	10	10	10	10	8	10	10	10	10	10	10	10	10	10	10	10	10	7	7	7	8	8	8	8	7	6	5	4	5	7	10	10
Greens Bayou	10	10	10	10	10	10	10	10	8	10	10	10	10	10	10	10	10	10	10	10	10	7	7	8	8	8	8	7	6	6	6	6	8	10	10	
Shell Crude	10	10	10	10	10	10	10	10	8	10	10	10	10	10	10	10	10	10	10	10	10	8	8	8	8	8	8	8	7	7	7	8	7	9	10	10
Lynchburg Ferries	10	10	10	10	10	10	10	10	8	10	10	10	10	10	10	10	10	10	10	10	10	8	8	8	8	8	8	7	7	7	8	7	9	10	10	
Exxon 3	10	10	10	10	10	10	10	10	10	10	10	10	10	10	10	10	10	10	10	10	10	8	8	8	8	8	8	8	7	7	7	8	7	9	10	10
Morgans Point	10	10	10	10	10	10	10	10	10	10	10	10	10	10	10	10	10	10	10	10	10	8	8	8	8	8	8	8	7	7	7	8	7	9	10	10
75/76	10	10	10	10	10	10	10	10	10	10	10	10	10	10	10	10	10	10	10	10	10	8	8	8	8	8	8	8	7	7	7	8	7	9	10	10
63/64	10	10	10	10	10	10	10	10	10	10	10	10	10	10	10	10	10	10	10	10	10	8	8	8	8	8	8	8	7	7	7	8	7	9	10	10
51/52	10	10	10	10	10	10	10	10	10	10	10	10	10	10	10	10	10	10	10	10	9	8	8	8	8	8	8	8	7	7	7	7	7	9	10	10
37/38	10	10	10	10	10	10	10	10	10	10	10	10	10	10	10	10	10	10	10	10	9	8	8	8	8	8	8	7	6	6	6	6	6	9	10	10
25/26	10	10	10	10	10	10	10	10	10	10	10	10	10	10	10	10	10	10	10	10	9	8	8	8	8	8	8	8	7	7	7	7	7	9	10	10
11/12	10	10	10	10	10	10	10	10	10	10	10	10	10	10	10	10	10	10	10	10	9	8	8	8	8	8	8	8	7	8	7	8	7	8	10	10
1 & 2 Bravo	10	10	10	10	10	10	10	10	10	10	10	10	10	10	10	9	9	9	9	9	8	8	8	8	8	8	8	8	7	8	7	8	7	7	9	9

NOTE: This is automated data that may/may not agree with the official BAM thinking that's found on the daily slides or special visibility report slides. This data should be used as a guide only

Houston Pilots Wind Chart



Forecast Confidence



Example

Sustained wind 13 Knots
Gusts 18 Knots
Wind from the N

WS: 13
G:18
N

Time Knots	Fri 12am	Fri 1am	Fri 2am	Fri 3am	Fri 4am	Fri 5am	Fri 6am	Fri 7am	Fri 8am	Fri 9am	Fri 10am	Fri 11am	Fri 12pm	Fri 1pm	Fri 2pm	Fri 3pm	Fri 4pm	Fri 5pm	Fri 6pm	Fri 7pm	Fri 8pm	Fri 9pm	Fri 10pm	Fri 11pm	Sat 12am	Sat 1am	Sat 2am	Sat 3am	Sat 4am	Sat 5am	Sat 6am	Sat 7am	Sat 8am	Sat 9am	Sat 10am	Sat 11am	
610 Bridge	4	4	6	7	6	5	5	4	3	5	6	6	9	10	8	13	13	13	13	11	12	11	11	11	10	10	8	8	8	8	7	8	8	10	11	10	
	10	12	14	15	13	11	12	9	9	13	17	19	21	20	21	20	20	19	17	18	17	17	16	16	15	15	12	12	12	12	11	12	13	15	16	16	
	SSE	SSE	SSE	SSE	SSE	SSE	S	SSW	S	S	SSW	SSW	SSW	SSW	SSW	S	S	S	S	S	S	S	S	S	S	S	SSW	SSW	SSW	SSW	SSW	S	S	SSW	SSW	SSW	
Kinder 1	4	4	6	7	6	4	5	4	3	5	5	6	8	10	8	13	13	12	11	11	11	11	11	11	10	9	8	8	8	7	8	8	9	10	10		
	10	12	14	15	13	11	12	9	10	13	16	18	20	21	21	20	20	19	17	17	17	17	16	16	15	14	12	12	11	12	11	12	12	15	16	15	
	SSE	SSE	SSE	SSE	SSE	SSE	SSE	S	SSE	S	SSW	SSW	SSW	SSW	SSW	S	S	S	S	S	S	S	S	S	S	S	SSW	SSW	SSW	SSW	SSW	S	S	S	SSW	SSW	SSW
Greens Bayou	4	4	6	6	6	4	4	3	3	5	5	6	7	10	8	13	13	12	11	11	11	11	11	10	10	9	8	7	7	7	7	7	8	9	10	10	
	11	12	13	14	13	10	11	9	10	13	14	17	19	22	21	19	20	18	17	17	16	16	16	16	15	14	12	11	11	11	11	11	12	14	15	15	
	SSE	SSE	S	SSE	SSE	SSE	SSE	SSE	SSE	S	SSW	SSW	SSW	SSW	SSW	S	S	S	S	S	S	S	S	S	S	S	SSW	SSW	SSW	SSW	SSW	S	S	S	SSW	SSW	SSW
Shell Crude	4	5	6	7	6	4	4	3	4	5	5	7	9	7	12	13	12	11	11	11	11	10	10	10	9	8	7	7	7	7	8	8	9	10	10		
	11	12	13	14	13	10	12	8	10	12	13	17	18	22	20	19	19	18	16	17	16	16	16	15	15	14	12	11	11	10	10	11	12	14	15	15	
	SSE	SSE	S	SSE	SSE	SSE	SSE	SSE	SSE	S	SSW	SSW	SSW	SSW	SSW	S	S	S	S	S	S	S	S	S	S	S	SSW	SSW	SSW	SSW	SSW	S	S	S	SSW	SSW	SSW
Lynchburg Ferries	4	5	6	6	6	4	4	3	3	5	4	5	6	8	7	12	13	12	11	11	11	10	10	10	9	8	7	7	7	7	7	8	9	10	10		
	11	12	13	13	13	10	11	8	9	13	12	15	17	21	20	19	19	17	16	16	16	16	15	15	14	13	12	11	11	10	10	11	12	13	15	15	
	SSE	SSE	SSE	SSE	SSE	SSE	SSE	SSE	S	S	SSW	SSW	SSW	SSW	SSW	S	S	S	S	S	S	S	S	S	S	S	SSW	SSW	SSW	SSW	SSW	S	S	S	SSW	SSW	SSW
Exxon 3	5	5	6	6	6	4	5	3	3	4	4	5	7	7	12	13	12	11	11	11	11	11	10	10	10	9	8	8	7	7	7	7	8	9	10	10	
	11	13	14	13	13	11	13	9	8	11	12	15	17	19	18	18	18	17	15	16	16	15	14	14	14	13	12	11	11	10	10	10	11	13	14	15	
	SSE	SSE	SSE	SSE	SSE	SSE	SSE	SSE	S	S	S	S	SSW	SSW	SSW	S	S	S	S	S	S	S	S	S	S	S	S	S	SSW	SSW	SSW	S	S	S	SSW	SSW	SSW
Morgans Point	5	7	7	7	7	6	7	5	3	3	5	7	9	9	8	13	13	13	12	12	12	11	11	11	10	10	9	9	8	7	8	8	9	9	9		
	12	14	15	14	15	13	14	11	7	8	12	17	18	18	18	18	18	17	15	15	15	15	15	14	14	13	12	12	11	11	10	9	10	11	12	14	14
	SSE	SSE	SSE	SSE	SSE	SSE	S	SSE	SSW	SSW	S	S	S	S	S	S	S	S	S	S	S	S	S	S	S	S	S	S	S	S	S	S	S	S	S	SSW	SSW
75/76	6	8	8	10	9	8	7	7	5	3	5	9	10	10	10	14	14	14	13	13	13	13	12	12	12	12	11	9	9	9	8	9	10	10	9		
	13	15	15	17	16	15	13	13	10	7	13	19	18	18	18	18	18	17	15	15	15	15	14	14	14	13	13	11	11	11	10	10	11	12	13	14	
	SE	SSE	SSE	SSE	SSE	SSE	SSE	SSE	SSW	SW	S	S	S	S	S	S	S	S	S	S	S	S	S	S	S	S	S	S	S	S	S	S	S	S	S	SSW	SSW
63/64	7	8	8	10	10	9	7	8	8	6	6	9	9	11	14	14	14	13	13	13	13	12	12	12	12	12	11	9	9	9	9	9	10	10	9		
	13	15	15	16	17	16	14	13	13	12	14	18	18	18	19	18	18	16	15	15	15	14	14	14	14	13	13	12	11	11	10	10	10	11	11	13	14
	SSE	SSE	SSE	SSE	SSE	SSE	SSE	SSE	SSE	SW	S	S	S	S	S	S	S	S	S	S	S	S	S	S	S	S	S	S	S	S	S	S	S	S	S	S	S
51/52	7	8	8	9	10	10	8	8	7	9	9	8	9	10	11	13	13	13	13	13	13	12	12	12	11	11	10	9	9	9	8	9	9	10	10	9	
	13	15	15	15	17	17	14	14	15	18	16	16	19	20	20	18	17	16	15	15	14	14	14	14	13	13	12	10	10	10	9	10	11	11	13	14	
	SSE	SSE	SSE	SSE	SSE	SSE	SSE	SSE	SSE	S	S	SSW	S	S	S	S	S	S	S	S	S	S	S	S	S	S	S	S	S	S	S	S	S	S	S	S	S
37/38	6	7	8	8	10	9	7	7	7	10	11	9	10	11	11	13	13	13	12	12	12	12	12	12	11	11	10	9	8	8	8	8	9	9	10	10	
	13	14	15	14	17	16	14	14	14	18	18	18	19	21	18	17	16	16	15	14	14	13	13	14	13	12	11	10	9	9	9	9	10	11	13	14	
	SSE	SSE	SSE	SSE	SSE	SSE	SSE	SSE	SSE	S	S	S	S	S	S	S	S	S	S	S	S	S	S	S	S	S	S	S	S	S	S	S	S	S	S	S	S
25/26	6	6	7	8	9	9	7	7	6	11	11	11	11	12	10	12	12	12	12	11	11	11	11	11	10	10	9	8	7	7	7	7	8	8	9	10	
	13	13	14	14	16	16	14	15	14	17	18	20	18	21	16	16	16	16	15	15	14	14	13	14	13	12	11	10	9	9	9	8	9	10	11	12	13
	SSE	SSE	SSE	SSE	SSE	SSE	SSE	SSE	S	S	S	S	S	S	S	S	S	S	S	S	S	S	S	S	S	S	S	S	S	S	S	S	S	S	S	S	S
11/12	7	7	8	8	10	10	8	8	9	11	10	12	12	13	10	11	12	12	11	11	11	11	11	11	11	10	9	8	7	7	7	7	8	9	9		
	14	13	14	14	17	17	15	16	17	16	17	19	18	21	15	15	16	16	15	15	14	14	14	14	13	13	12	10	9	9	8	9	10	11	12	12	
	SSE	S	SSE	SSE	SSE	SSE	SSE	SSE	S	S	S	S	S	S	S	S	S	S	S	S	S	S	S	S	S	S	S	S	S	S	S	S	S	S	S	S	S
1 & 2 Bravo	9	8	8	9	12	12	11	10	12	11	11	12	13	13	11	13	13	13	13	13	13	13	13	13	13	12	10	9	9	9	9	10	10	10	10		
	14	13	13	14	17	18	18	17	19	17	18	19	20	17	16	17	17	17	15	15	15	15	15	15	14	13	12	11	10	10	9	10	11	11	12	12	
	SSE	S	SSE	SSE	SSE	SSE	SSE	S	S	S	S	S	S	S	S	S	S	S	S	S	S	S	S	S	S	S	S	S	S	S	S	S	S	S	S	S	S

NOTE: This is automated data that may/may not agree with the official BAM thinking that's found on the daily slides or special visibility report slides. This data should be used as a guide only

Forecast Discussion

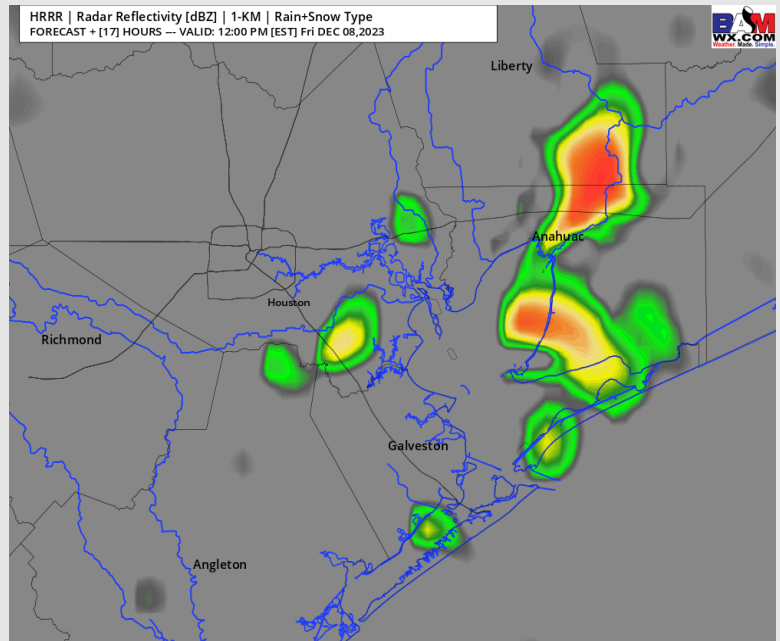
Precip: Favoring mostly dry conditions, with low end risks for light showers and a few isolated storms between 8 AM and 5PM CT.

Wind: Calm and variable winds are expected through the AM hours before increasing during the afternoon / evening as front approaches out of the southeast. **N of Morgan's Point:** Winds to start at 4 - 8 kts, becoming 10 - 14 kts after 2 PM. **S of Morgan's Point:** Winds to start at 5 - 9 kts, becoming 12 - 16kts after 11 AM. Winds towards the boarding station will reach 13 - 18 kts after 12PM, increasing to 14 - 19 kts by 6PM. **Gusts of 20-30 kts will be possible throughout the day.**

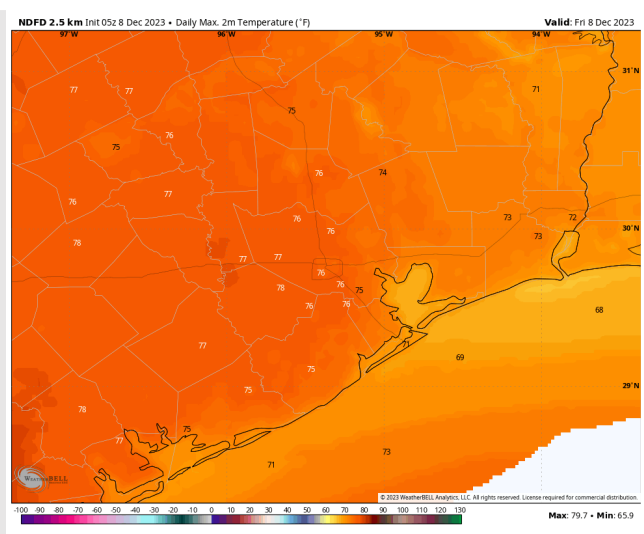
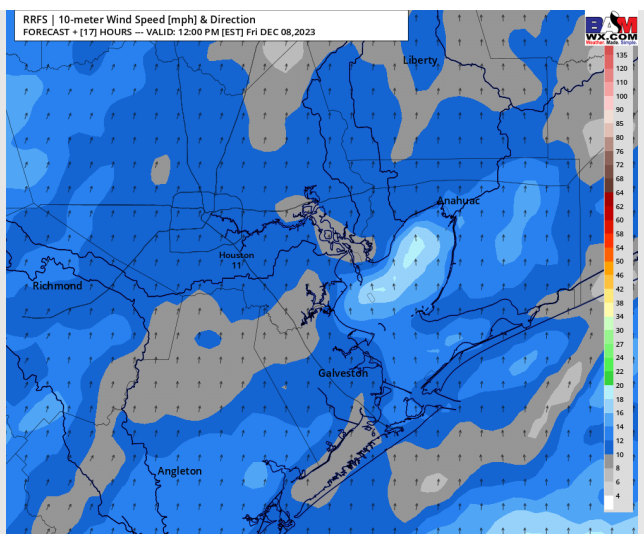
High Temps: **N of Morgan's Point:** Mid 70s F **S of Morgan's Point:** Mid to upper 60s F.

Visibility: Watching the risk for patchy fog development in the bay late Friday around 11PM into Sat. AM out ahead of the front this weekend. Lower confidence at this time, however based on latest model guidance, would favor this fog to set up closer to Morgan's Point. **View visibility slide for more details.**

Precip Image: 11 AM CT



**Wind Speed:
11 AM CT**



**High Temps
Today**

Houston Pilots: Sat. 12/09/2023



Forecast Discussion

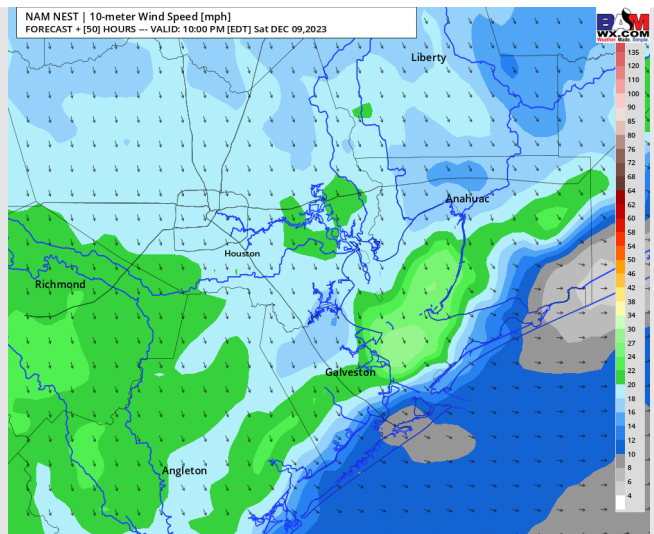
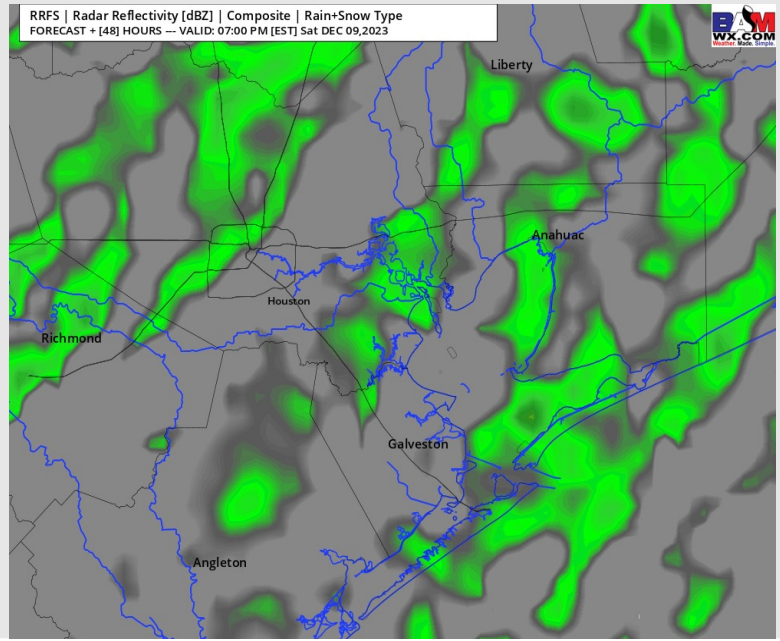
Precip: Hit/miss shower chances (20-30%) will be in play through 7 AM. A lull in precip will follow until 12 PM, when more widespread (60-70%) chances for storms (with severe potential including gusty winds and hail) move in from the NW and remain for the rest of the day.

Wind: Winds out of the S/WSW through 5 PM, veering out of the NW after this time as the main front arrives. **N of Morgan's Point:** Sustained at 5 - 10 kts prior to 8 PM, then 9 - 14 kts for the remainder of the evening as the front arrives. **S of Morgan's Point:** 10-15 kts through 4 AM, decreasing to 8-13 kts at this time and remaining at this speed through 9 PM. After 9 PM, winds steadily increase to 20-25 kts by 12 AM. **Gusts through the AM will be around 25-30 kts, increasing to 35-45 kts moving into the late evening.**

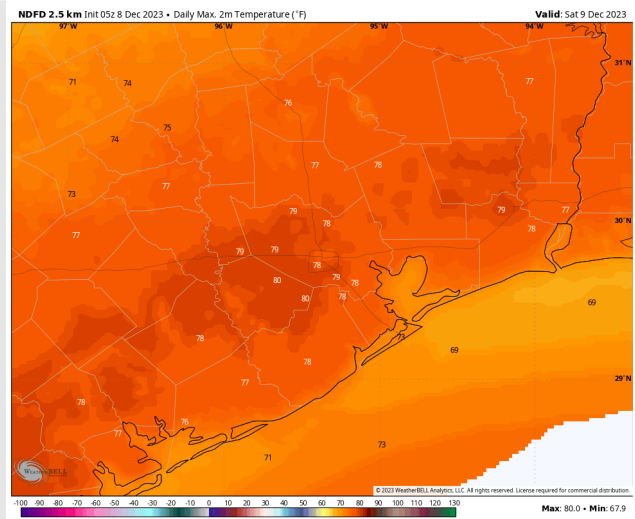
High Temps: **N of Morgan's Point:** Upper 70 F. **S of Morgan's Point:** Low 70s F.

Visibility: Watching the early AM for a potential fog development within the Bay associated with the front. Risk would last until ~12 PM. **More details on visibility slide.**

Precip Image: 6 PM CT



**Wind Speed:
9 PM CT**



**High Temps
Saturday**

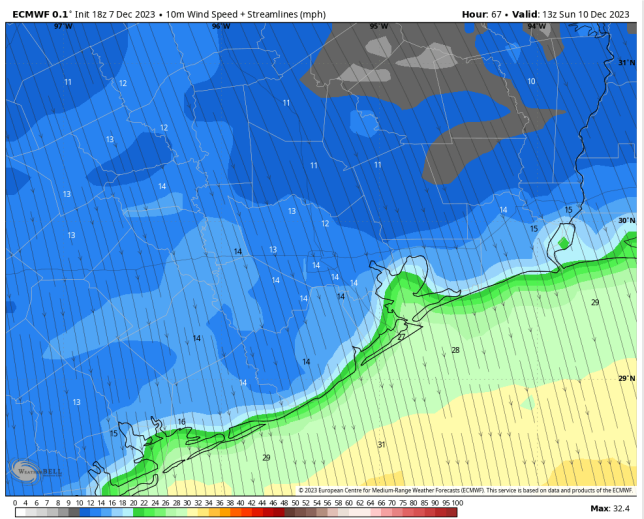
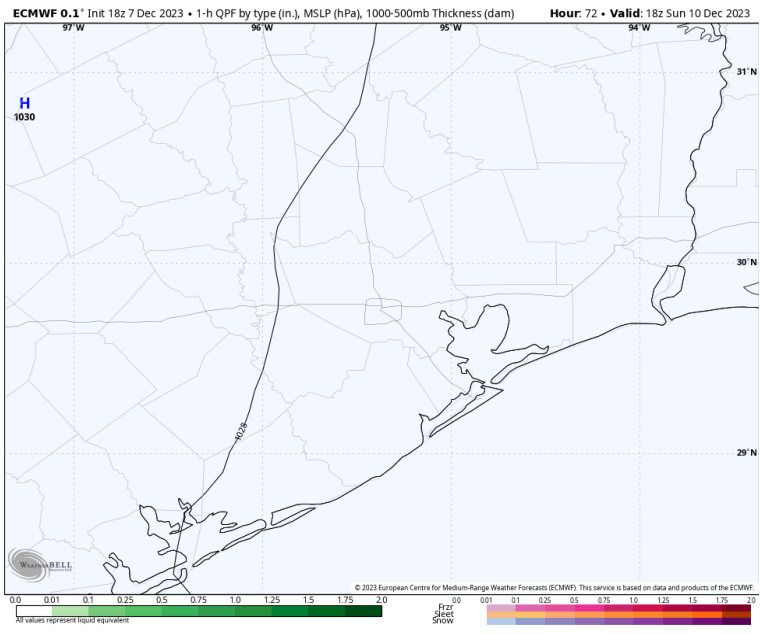
Houston Pilots: Sun. 12/10/2023



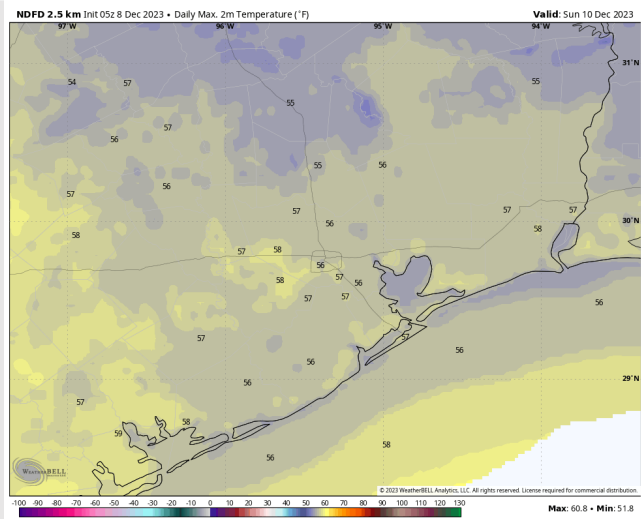
Forecast Discussion

- Precip:** Dry conditions favored throughout the day.
- Wind:** Winds out of the NW will gradually calm throughout the day.
- N of Morgan's Point:** Winds currently at 10-15 kts will gradually calm to 3-8 kts by 5 PM.
- S of Morgan's Point:** 20-25 kt winds will sustain through 7 AM, after which time winds will being to gradually calm to 5-10 kts by 6 PM.
- High Temps:** Notable cooler behind the cold front N of Morgan's Point: Mid 50s F. S of Morgan's Point: Mid 50s F.
- Visibility:** Not anticipating any fog concerns Sunday.

Precip Image: 12 PM CT

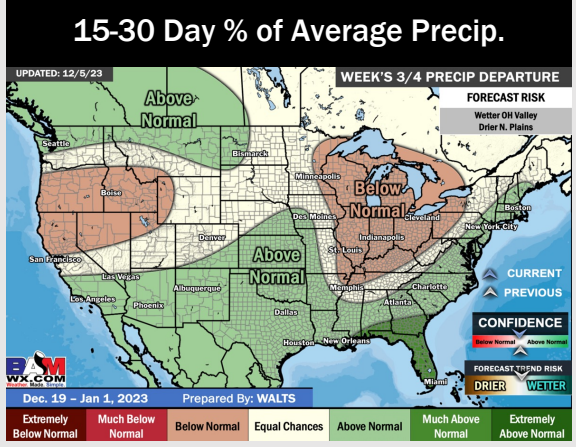
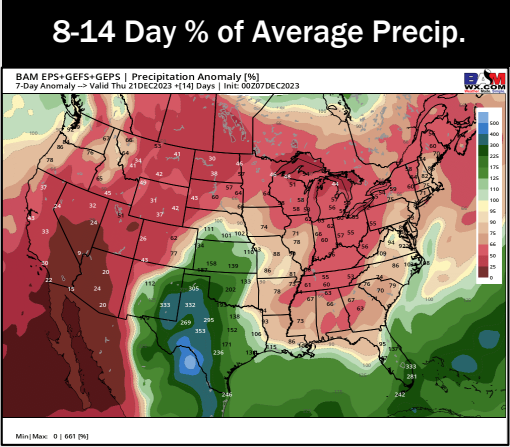
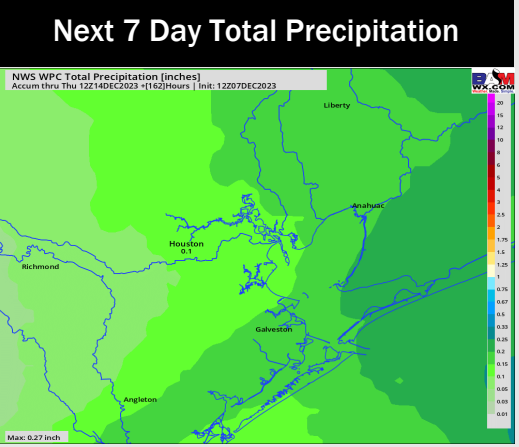
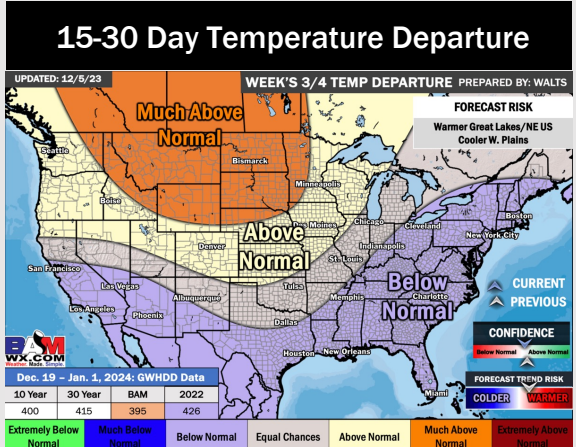
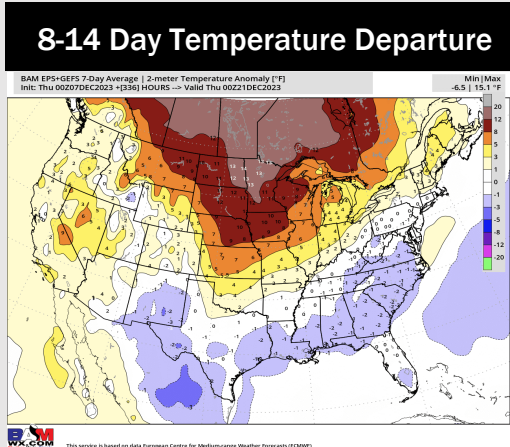
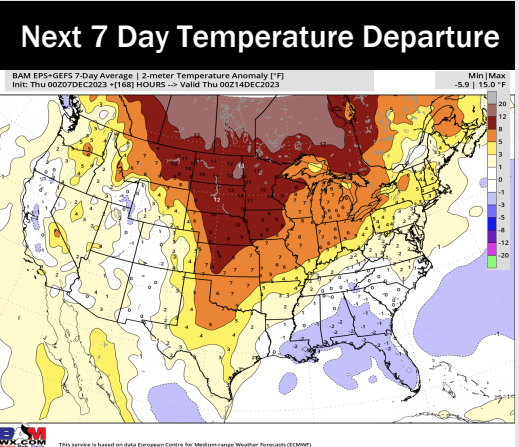


Wind Speed:
7 AM CT



High Temps
Sunday

Houston Pilots: 12/8/23



- Next best shot at rain will be on the 9th via a cold front. Seasonable / slightly warmer than normal weather is expected this week.
- Above normal rainfall and slightly below normal temperatures are expected into the week 2 timeframe.
- Below normal temperatures and above normal chances for precipitation are favored in the weeks 3/4 timeframe.