

Houston Pilots Forecast Package



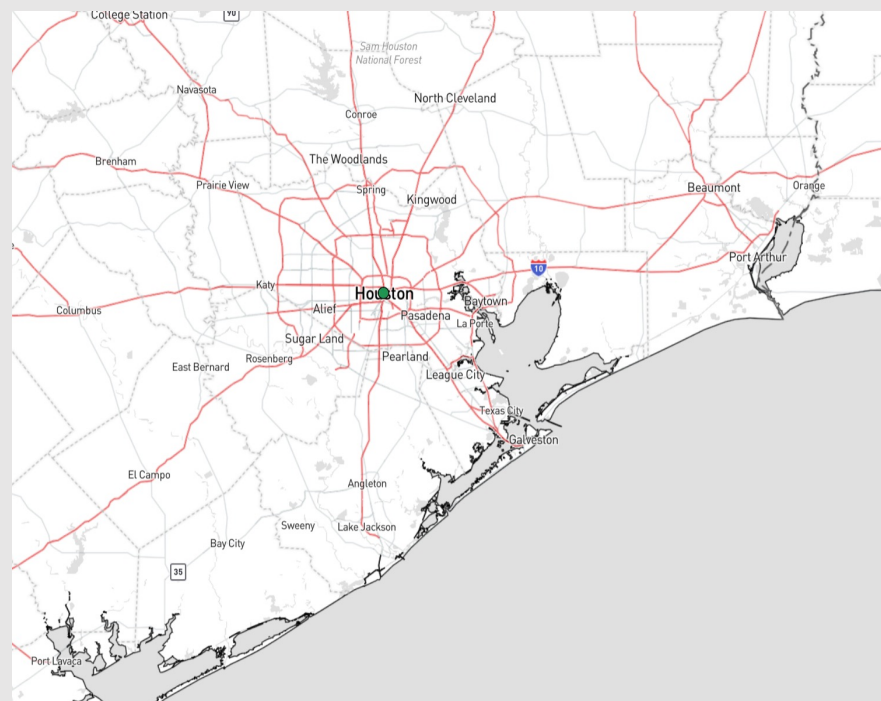
Updated: 1:45 AM CT

Monday, December 18, 2023

Forecaster: Jonathan Kipper

Weather Headlines

- Winds are expected to remain calm over the next couple days, seldom reaching over 15kts outside of the Boarding Station.
- Dry conditions are favored over the next few days, with next rain chances occurring late THU into FRI
- Not favoring any visibility issues over the coming days for fog (low end risk on WED).



Radar/NWS Alerts: 1:40 AM CT



As always, please do not hesitate to reach out to us with any forecast questions via the chat option on the Weather Porthole or our on-call number, **(317)-560-8122** press 1 for forecast questions.

Houston Pilots Extended Range Visibility Report



Thursday 12/21/23

Still needing to watch THU for a risk of sea fog, as a slightly higher risk than WED due to better low level moisture in the area.

Forecast Confidence



Saturday 12/23/23

As fog passes through the area FRI, patchy to widespread fog across the area will need to be monitored (exit time for rain will need to be watched for potential timeframe of fog on SAT).

Forecast Confidence



Friday 12/22/23

Not anticipating any fog at this time, however will need to keep an eye on timing of front as reduced visibilities may be possible under heavier downpours.

Forecast Confidence



Chance for Fog

Thursday AM	Possible
Thursday PM	Unlikely
Friday AM	Unlikely
Friday PM	Unlikely
Saturday AM	Likely
Saturday PM	Possible

Houston Pilots Visibility Chart (miles)



Time	Mon 1am	Mon 2am	Mon 3am	Mon 4am	Mon 5am	Mon 6am	Mon 7am	Mon 8am	Mon 9am	Mon 10am	Mon 11am	Mon 12pm	Mon 1pm	Mon 2pm	Mon 3pm	Mon 4pm	Mon 5pm	Mon 6pm	Mon 7pm	Mon 8pm	Mon 9pm	Mon 10pm	Mon 11pm	Tue 12am	Tue 1am	Tue 2am	Tue 3am	Tue 4am	Tue 5am	Tue 6am	Tue 7am	Tue 8am	Tue 9am	Tue 10am	Tue 11am	Tue 12pm
610 Bridge	10	10	10	10	10	10	10	10	10	10	10	10	10	10	10	10	10	10	10	10	10	10	10	10	10	10	10	10	10	10	10	10	10	10	10	
Kinder 1	10	10	10	10	10	10	10	10	10	10	10	10	10	10	10	10	10	10	10	10	10	10	10	10	10	10	10	10	10	10	10	10	10	10	10	
Greens Bayou	10	10	10	10	10	10	10	10	10	10	10	10	10	10	10	10	10	10	10	10	10	10	10	10	10	10	10	10	10	10	10	10	10	10	10	
Shell Crude	10	10	10	10	10	10	10	10	10	10	10	10	10	10	10	10	10	10	10	10	10	10	10	10	10	10	10	10	10	10	10	10	10	10	10	
Lynchburg Ferries	10	10	10	10	10	10	10	10	10	10	10	10	10	10	10	10	10	10	10	10	10	10	10	10	10	10	10	10	10	10	10	10	10	10	10	
Exxon 3	10	10	10	10	10	10	10	10	10	10	10	10	10	10	10	10	10	10	10	10	10	10	10	10	10	10	10	10	10	10	10	10	10	10	10	
Morgans Point	10	10	10	10	10	10	10	10	10	10	10	10	10	10	10	10	10	10	10	10	10	10	10	10	10	10	10	10	10	10	10	10	10	10	10	
75/76	10	10	10	10	10	10	10	10	10	10	10	10	10	10	10	10	10	10	10	10	10	10	10	10	10	10	10	10	10	10	10	10	10	10	10	
63/64	10	10	10	10	10	10	10	10	10	10	10	10	10	10	10	10	10	10	10	10	10	10	10	10	10	10	10	10	10	10	10	10	10	10	10	
51/52	10	10	10	10	10	10	10	10	10	10	10	10	10	10	10	10	10	10	10	10	10	10	10	10	10	10	10	10	10	10	10	10	10	10	10	
37/38	10	10	10	10	10	10	10	10	10	10	10	10	10	10	10	10	10	10	10	10	10	10	10	10	10	10	10	10	10	10	10	10	10	10	10	
25/26	10	10	10	10	10	10	10	10	10	10	10	10	10	10	10	10	10	10	10	10	10	10	10	10	10	10	10	10	10	10	10	10	10	10	10	
11/12	10	10	10	10	10	10	10	10	10	10	10	10	10	10	10	10	10	10	10	10	10	10	10	10	10	10	10	10	10	10	10	10	10	10	10	
1 & 2 Bravo	10	10	10	10	10	10	10	10	10	10	10	10	10	10	10	10	10	10	10	10	10	10	10	10	10	10	10	10	10	10	10	10	10	10	10	

NOTE: This is automated data that may/may not agree with the official BAM thinking that's found on the daily slides or special visibility report slides. This data should be used as a guide only

Houston Pilots Wind Chart



Forecast Confidence

Above Normal

Below Normal

Example

Sustained wind 13 Knots

Gusts 18 Knots

Wind from the N

WS: 13

G:18

N

Time Knots	Mon 1am	Mon 2am	Mon 3am	Mon 4am	Mon 5am	Mon 6am	Mon 7am	Mon 8am	Mon 9am	Mon 10am	Mon 11am	Mon 12pm	Mon 1pm	Mon 2pm	Mon 3pm	Mon 4pm	Mon 5pm	Mon 6pm	Mon 7pm	Mon 8pm	Mon 9pm	Mon 10pm	Mon 11pm	Tue 12am	Tue 1am	Tue 2am	Tue 3am	Tue 4am	Tue 5am	Tue 6am	Tue 7am	Tue 8am	Tue 9am	Tue 10am	Tue 11am	Tue 12pm
610 Bridge	3	3	3	3	3	3	3	2	4	7	5	6	6	6	6	6	6	5	5	5	5	5	4	4	4	4	4	4	5	5	6	7	8	9	8	8
	6	6	6	6	7	7	7	7	8	15	11	10	10	9	10	9	9	8	8	8	7	7	6	7	6	6	6	7	7	8	9	11	12	13	12	12
	NNW	NW	W	WNW	NW	NNW	WNW	NW	NNW	NNE	NNE	NNE	NNE	NE	N	N	N	N	NNE	NNE	NNE	NNE	NE	NE	NE	NE	ENE	ENE	ENE	E	E	E	E	E	ESE	
Kinder 1	3	3	3	3	3	3	3	2	4	7	5	6	6	6	6	6	6	5	5	5	5	4	4	4	4	4	4	5	5	6	7	8	8	8	8	
	6	6	6	6	7	7	7	7	8	15	11	10	11	10	10	9	9	8	8	8	7	7	6	7	6	6	7	7	8	9	11	12	13	12	11	
	NNW	NW	W	WNW	NW	NNW	WNW	NW	NNW	NNE	NNE	NNE	NNE	NNE	N	N	N	N	N	NNE	NNE	NNE	NNE	NE	NE	NE	NE	ENE	ENE	ENE	E	E	E	E	ESE	
Greens Bayou	3	3	3	3	3	3	3	2	4	7	6	6	6	7	6	6	6	5	5	4	4	4	4	4	4	4	4	5	5	6	7	8	8	8	8	
	6	6	6	6	7	8	7	7	8	16	12	10	11	11	10	9	9	8	8	7	7	7	6	7	6	6	6	7	8	9	10	12	12	11	11	
	NNW	NW	W	WNW	NW	NNW	WNW	NW	NNW	NNE	NNE	NNE	NNE	N	N	N	N	N	N	NNE	NNE	NNE	NNE	NE	NE	NE	NE	ENE	ENE	ENE	E	E	E	E	ESE	
Shell Crude	3	3	3	3	3	3	3	2	4	7	6	5	6	7	6	6	6	5	5	5	5	5	4	4	4	4	4	5	5	6	7	8	8	8	8	
	6	7	6	7	7	8	7	7	8	16	11	10	11	11	10	9	9	8	8	7	7	7	6	7	7	6	7	7	8	9	11	13	12	12	11	
	NNW	NNW	W	WNW	NW	NNW	WNW	NW	NNW	NNE	NNE	NNE	NNE	N	NE	N	N	N	NNE	NNE	NNE	NNE	NE	NE	NE	NE	ENE	ENE	ENE	ENE	E	E	E	ESE		
Lynchburg Ferries	3	3	3	3	3	3	3	2	4	7	6	5	7	7	6	6	6	5	5	5	5	5	4	5	5	4	4	5	5	6	6	7	8	8	8	
	6	6	6	7	7	8	7	7	8	16	12	11	11	11	10	9	9	8	7	7	7	6	7	6	7	6	7	7	8	9	11	13	12	11	11	
	NNW	NNW	WNW	NW	NW	NNW	WNW	NW	NNW	NNE	NNE	N	NNE	N	NE	N	NNE	NE	N	NNE	NNE	NNE	NE	NE	NE	NE	ENE	ENE	ENE	E	E	E	E	ESE		
Exxon 3	3	3	3	3	3	3	3	2	4	6	6	5	6	7	6	6	6	6	5	5	5	5	5	5	5	5	5	6	6	7	8	9	9	9	8	
	6	7	7	8	8	8	7	7	9	16	12	10	10	10	10	9	9	8	7	7	7	7	7	7	7	7	8	8	9	10	11	13	12	12	11	
	NNW	NNW	WNW	NW	NW	NNW	WNW	NW	NNW	N	NNE	NNE	NNE	N	SE	N	NNE	ENE	NNE	NNE	NNE	NNE	NNE	NE	NE	NE	NE	ENE	ENE	ENE	E	E	E	ESE		
Morgans Point	3	4	4	4	5	5	4	4	5	7	5	4	5	6	6	7	7	7	6	6	6	6	6	6	6	6	6	7	8	8	9	10	10	10	9	
	6	8	7	9	10	9	8	8	9	15	12	9	10	9	9	9	9	8	8	8	8	8	8	8	8	8	8	9	10	11	13	14	13	13	12	
	NW	NNW	WNW	NW	NW	NW	NW	NW	NNW	NE	N	SE	ENE	E	WSW	N	NNE	NNE	NNE	NNE	NNE	NNE	NE	NE	NE	NE	NE	ENE	ENE	ENE	E	E	E	E	E	
75/76	4	6	6	7	8	8	7	6	6	7	5	3	3	4	4	7	8	8	8	8	8	8	8	8	8	9	9	10	11	12	13	13	13	12	11	
	6	8	8	9	10	10	9	8	10	15	12	8	9	9	9	9	9	9	9	9	9	9	9	9	9	10	10	12	13	13	14	15	15	14	13	
	NW	NNW	NW	WNW	NW	NW	NW	NNW	SW	NE	WSW	SSW	SW	WNW	N	N	NNE	NNE	NNE	NNE	NE	NE	NE	NE	NE	NE	ENE	ENE	ENE	E	E	E	E	E	E	
63/64	5	6	6	7	8	9	8	7	6	7	5	3	2	2	3	7	8	8	8	8	8	8	8	8	9	9	10	11	12	13	14	14	13	12	11	
	6	7	8	9	10	11	9	8	9	13	12	8	8	8	8	9	9	9	9	9	9	9	9	9	10	10	11	13	13	14	15	15	14	14	14	
	WNW	NNW	NW	WNW	NW	NW	NW	NNW	N	ESE	NW	NW	WNW	WNW	NE	N	NNE	NNE	NNE	NNE	NE	NE	NE	NE	NE	NE	ENE	ENE	ENE	E	E	E	E	E	E	
51/52	5	6	6	7	7	8	8	6	6	7	6	4	3	3	3	6	8	8	8	7	8	8	8	8	8	9	9	10	11	11	13	13	14	13	13	
	7	7	7	9	10	11	10	9	8	11	12	9	9	9	9	8	8	8	9	9	8	8	8	9	9	10	10	11	12	13	14	15	15	15	15	
	WNW	NW	NW	WNW	NW	NW	NW	NNW	N	WSW	NW	NW	WNW	WNW	SSE	NNE	NNE	NNE	NNE	NNE	NE	NE	NE	NE	NE	ENE	ENE	ENE	ENE	ENE	E	E	E	E	E	
37/38	5	6	6	7	7	9	8	7	7	8	7	6	4	4	4	6	7	7	7	7	7	7	7	8	8	9	9	10	11	12	13	14	14	14	13	
	8	7	6	9	10	11	11	9	9	11	12	10	10	10	10	8	8	8	8	8	8	9	9	9	10	10	11	11	12	14	15	15	15	15	15	
	WNW	NW	NW	WNW	NW	NNW	NNW	NNW	NNW	N	WNW	NW	NW	WNW	W	S	NNE	NNE	NNE	NNE	NE	NE	NE	NE	NE	ENE	ENE	ENE	ENE	ENE	E	E	E	E	E	
25/26	5	6	5	6	7	8	8	7	7	8	7	7	6	5	4	6	6	6	6	6	6	7	7	8	8	8	8	9	10	11	12	13	13	13	13	
	8	8	8	9	10	11	11	9	10	11	12	11	10	10	9	7	7	8	7	8	8	8	9	9	10	10	10	11	12	13	14	15	15	15	15	
	WNW	NW	NW	WNW	NW	NNW	NNW	NW	NNW	NNW	NNW	WNW	WNW	NNW	NW	NW	WNW	N	NNE	NNE	NNE	NE	NE	NE	NE	NE	ENE	ENE	ENE	ENE	E	E	E	E	E	
11/12	5	6	5	6	6	8	8	6	6	7	7	6	5	4	4	6	6	6	7	7	7	7	7	8	8	9	9	10	11	12	13	13	13	13	13	
	8	9	9	8	10	11	12	10	11	12	11	11	12	11	9	8	8	7	7	8	8	8	9	10	10	11	11	11	12	12	13	14	15	15	15	15
	WNW	WNW	NW	WNW	NW	NNW	NNW	NW	NNW	NNW	NNW	W	S	NW	NW	NNW	N	N	NNE	NNE	NNE	NE	NE	NE	NE	NE	ENE	ENE	ENE	ENE	E	E	E	E	E	
1 & 2 Bravo	6	7	6	7	9	10	10	8	8	8	7	7	6	4	5	6	7	8	8	8	8	9	10	11	12	12	12	13	14	15	16	17	18	18	17	16
	8	8	10	9	11	13	14	12	11	12	12	11	10	10	10	7	7	8	9	9	10	11	11	12	13	13	14	15	16	17	18	18	18	17	16	
	WNW	WNW	NW	WNW	NW	NNW	NNW	NNW	NNW	NNW	NNW	NNW	S	NNW	NNW	NNW	NNW	N	NNE	NNE	NNE	NNE	NE	NE	NE	ENE	ENE	ENE	ENE	E	E	E	E	E	E	

NOTE: This is automated data that may/may not agree with the official BAM thinking that's found on the daily slides or special visibility report slides. This data should be used as a guide only

Houston Pilots: Mon. 12/18/2023

Forecast Discussion

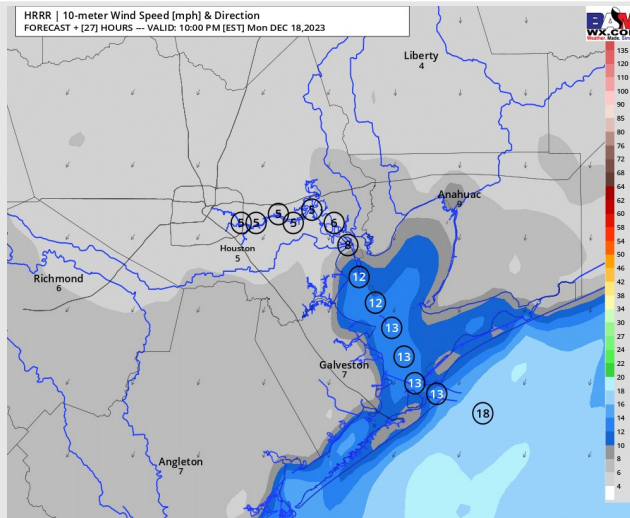
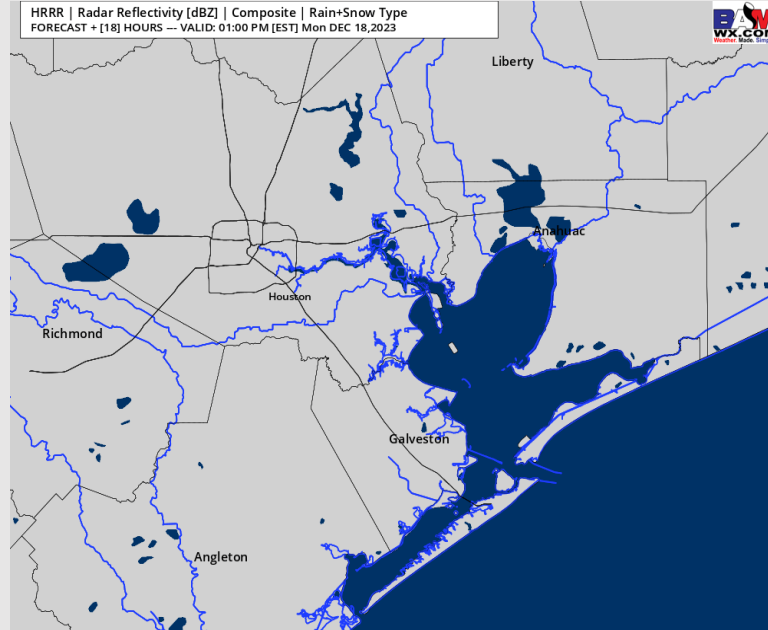
Precip: Dry conditions favored for today.

Wind: Winds will be out of the W will slowly veer and be out of the N/NW by 9 AM. Winds will then be out of the N/NNE by 8 PM and remain there the rest of the day. **N of Morgan's Point:** 3-8 kts the entire day. **S of Morgan's Point** Winds will at 7 - 12 kts for the majority of the day, with winds increasing to 10 - 15 kts at the Boarding Station by 9 PM.

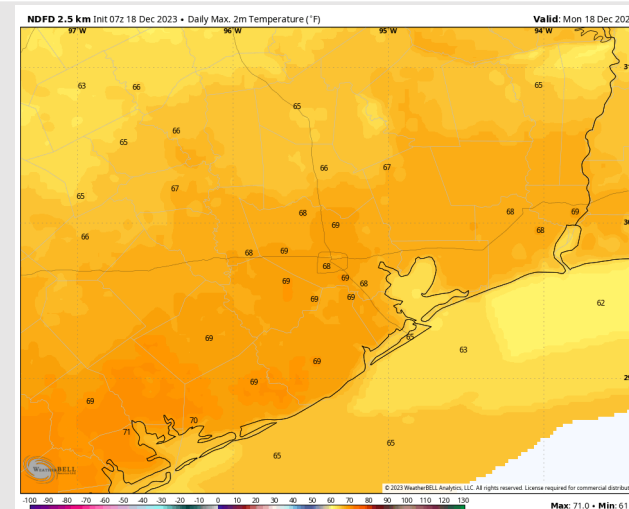
High Temps: **N of Morgan's Point:** Upper 60s F. **S of Morgan's Point:** Low 60s F.

Visibility: Not favoring any fog today.

Precip Image: 12 PM CT



Wind Speed:
9 PM CT



High Temps
Today

Houston Pilots: Tue. 12/19/2023

Forecast Discussion

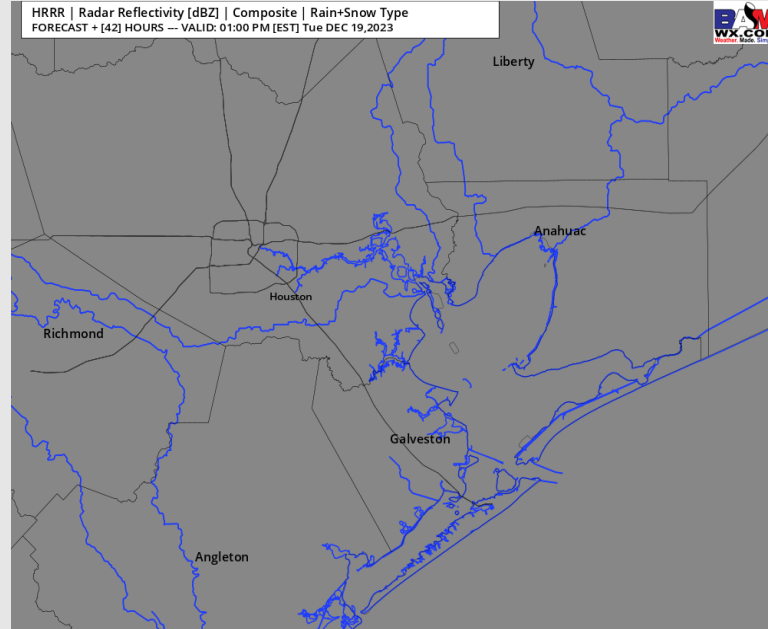
Precip: Dry conditions are favored for Tuesday.

Wind: Winds will slowly veer the entire day. Winds will start out of the N/NE, be out of the E by 7 AM, and out of the SE by 4-5 PM. **N Morgan's Point:** 5-10 kts the entire day. **S of Morgan's Point:** 10-15 kts the entire day, with a slight increase at Station 11/12 and the Boarding Station of 13-18 kts through 1 PM before decreasing to 10-15 kts.

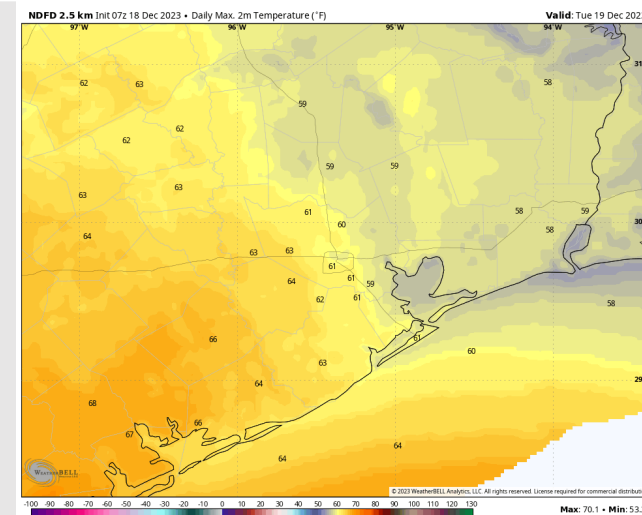
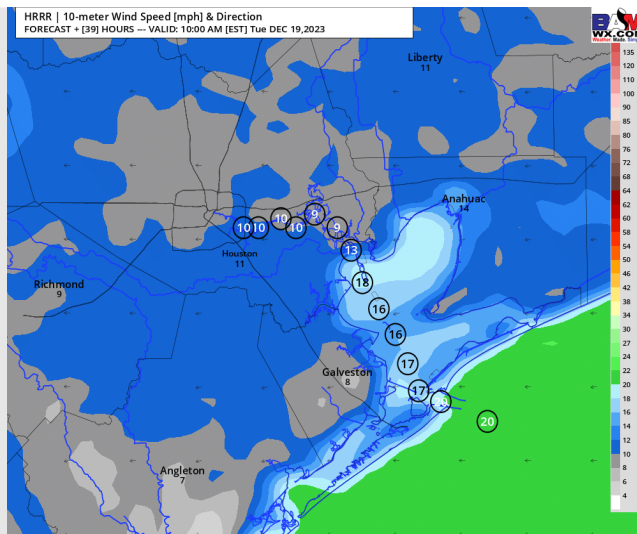
High Temps: **N of Morgan's Point:** Low 60s. **S of Morgan's Point:** Upper 50s F/Near 60 F.

Visibility: Not anticipating any visibility concerns

Precip Image: 12 PM CT



Wind Speed:
9 AM CT



High Temps
Tuesday

Houston Pilots: Wed. 12/20/2023

Forecast Discussion

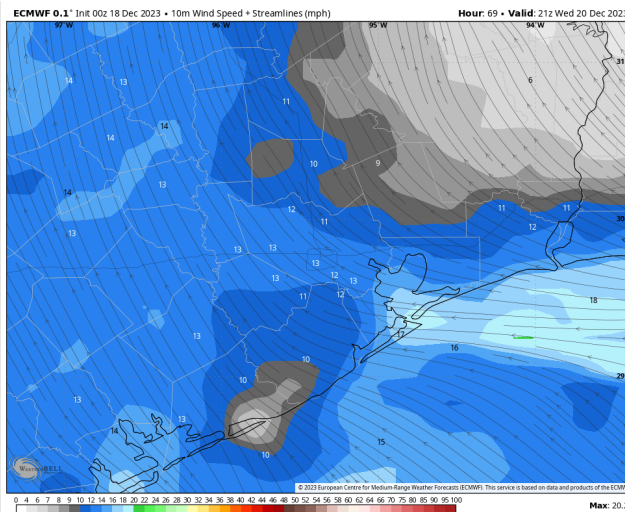
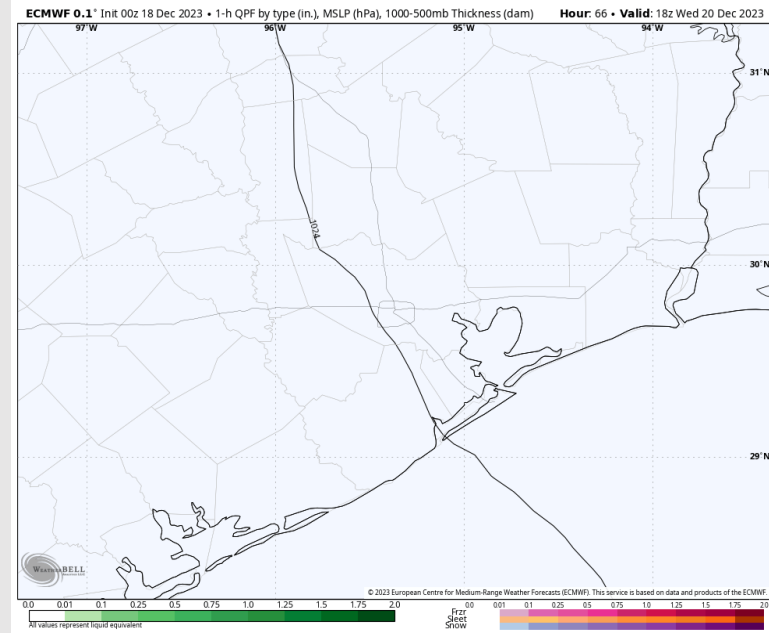
Precip: Dry conditions favored for Wednesday.

Wind: Winds will be out of the SE the entire day. **N of Morgan's Point:** Winds will be at 7-12kts throughout the day on WED. **S of Morgan's Point:** Winds will start off at 9-14 kts through 6 PM before increasing to 12-17 kts the rest of the evening.

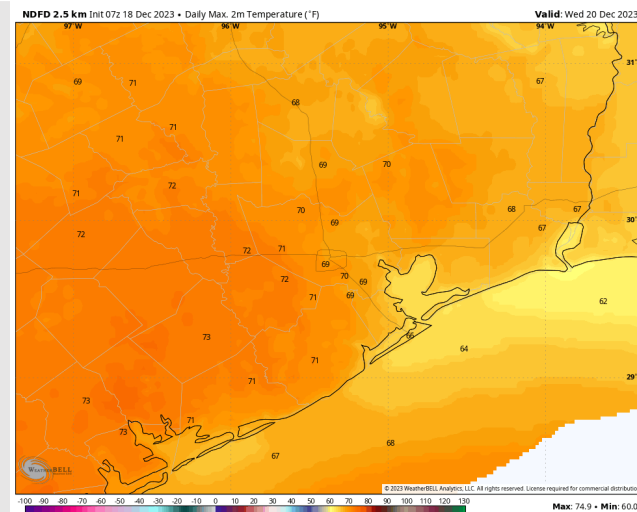
High Temps: **N of Morgan's Point:** Upper 60s F. **S of Morgan's Point:** Mid 60s F.

Visibility: A low end risk for sea fog will need to be monitored for WED AM, however lower confidence at this time..

Precip Image: 12 PM CT



Wind Speed:
3 PM CT

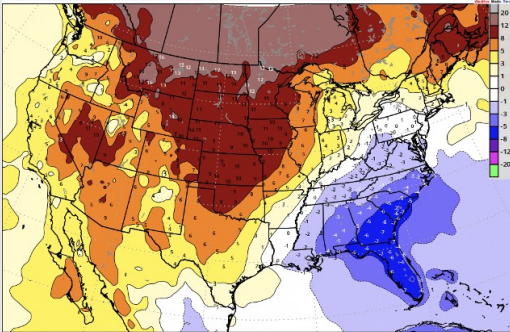


High Temps
Wednesday

Houston Pilots: 12/18/23

Next 7 Day Temperature Departure

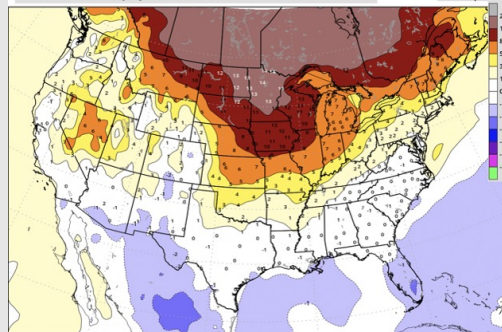
ECMWF EPS | 7-Day Average - 2m Temperature Anomaly [°F]
Init: Sun 12/17/2023 +168 HOURS → Valid Sun 1/2/24/2023



Service based on European Centre for Medium-range Weather Forecasts (ECMWF) data

8-14 Day Temperature Departure

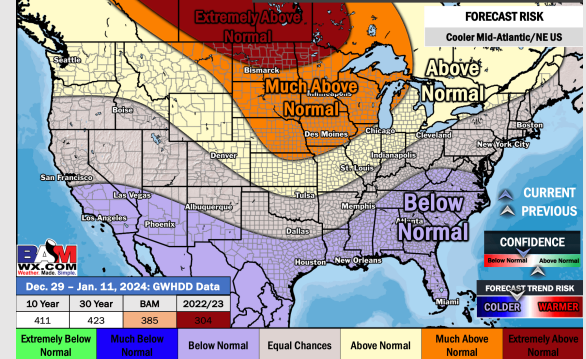
BAM EPS+GEFS 7-Day Average | 2-meter Temperature Anomaly [°F]
Init: Sun 12/17/2023 +136 HOURS → Valid Sun 1/23/2023



This service is based on data European Centre for Medium-range Weather Forecasts (ECMWF)

15-30 Day Temperature Departure

UPDATED: 12/15/23 WEEK'S 3/4 TEMP DEPARTURE PREPARED BY: WALTS



Next 7 Day Total Precipitation

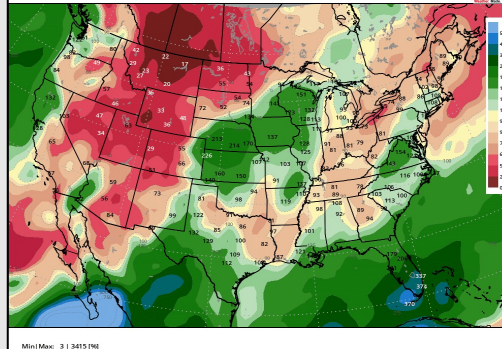
NWS WPC Total Precipitation (inches)
Accum thru Mon 06/25/2023 +168 HOURS | Init: 06/21/2023



Max: 3.24 inch

8-14 Day % of Average Precip.

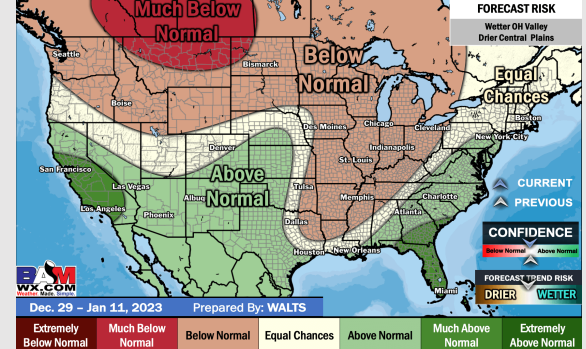
GEFSv12 | 7-Day Precipitation (% of Normal) | Ensemble Mean
Init: Sun 12/17/2023 +136 HOURS → Valid Sun 1/23/2023



Min: 3 | Max: 116 (%)

15-30 Day % of Average Precip.

UPDATED: 12/15/23 WEEK'S 3/4 PRECIP DEPARTURE



- The next best shot for rain will occur THU/FRI and into the weekend, bringing periods of moderate/heavy rain. Seasonable/slightly above normal temps are favored this week.
- Seasonal precipitation chances and seasonal temperatures are expected into the week 2 timeframe.
- Below normal temperatures and slightly above normal chances for precipitation are favored in the weeks ¾ timeframe.