

# Houston Pilots Forecast Package



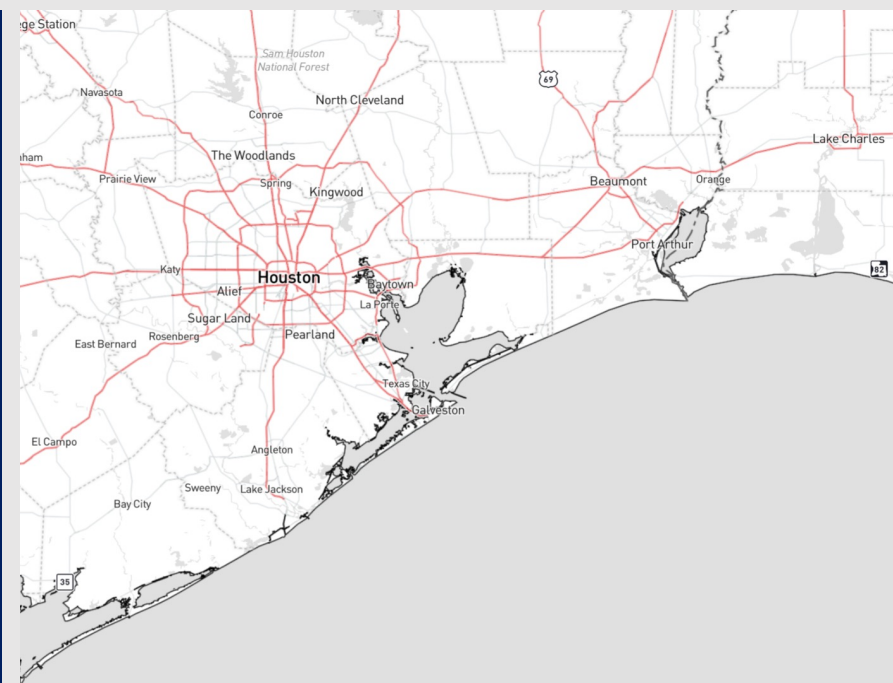
Updated: 4:40 AM CT

Wednesday, December 6, 2023

Forecaster: Alyssa Elliott

## Weather Headlines

- Next rain chances arrive Saturday PM as cold front pushes southeast.  
**Keeping an eye on strong/severe wind gust potential.**
- Not foreseeing any fog concerns over the next 48 hours.
- Gusty winds of 25 – 30 kts will be in play during the AM hours today.



**Radar/NWS Alerts: 4:15 AM CT**



As always, please do not hesitate to reach out to us with any forecast questions via the chat option on the Weather Porthole or our on-call number, **(317)-560-8122** press 1 for forecast questions.

# Houston Pilots Extended Range Visibility Report



## Saturday 12/9/23

Would need to monitor a low-end risk for sea fog as winds will be from the SE ahead of a cold front in the AM.



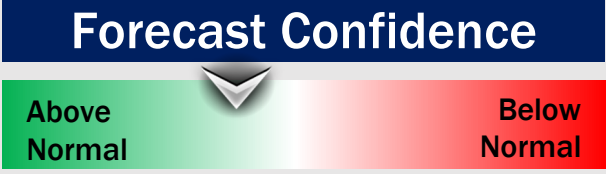
## Monday 12/11/23

No fog concerns Monday.



## Sunday 12/10/23

No fog concerns Sunday



## Chance for Fog

Saturday AM	Possible
Saturday PM	Unlikely
Sunday AM	Unlikely
Sunday PM	Unlikely
Monday AM	Unlikely
Monday PM	Unlikely

# Houston Pilots Visibility Chart (miles)



## Forecast Confidence



Time	Tue 4pm	Tue 5pm	Tue 6pm	Tue 7pm	Tue 8pm	Tue 9pm	Tue 10pm	Tue 11pm	Wed 12am	Wed 1am	Wed 2am	Wed 3am	Wed 4am	Wed 5am	Wed 6am	Wed 7am	Wed 8am	Wed 9am	Wed 10am	Wed 11am	Wed 12pm	Wed 1pm	Wed 2pm	Wed 3pm	Wed 4pm	Wed 5pm	Wed 6pm	Wed 7pm	Wed 8pm	Wed 9pm	Wed 10pm	Wed 11pm	Thu 12am	Thu 1am	Thu 2am	Thu 3am
610 Bridge	10	10	10	10	10	10	10	10	10	10	10	10	10	10	10	10	10	10	10	10	10	10	10	10	10	10	10	10	10	10	10	10	10	10	10	10
Kinder 1	10	10	10	10	10	10	10	10	10	10	10	10	10	10	10	10	10	10	10	10	10	10	10	10	10	10	10	10	10	10	10	10	10	10	10	10
Greens Bayou	10	10	10	10	10	10	10	10	10	10	10	10	10	10	10	10	10	10	10	10	10	10	10	10	10	10	10	10	10	10	10	10	10	10	10	10
Shell Crude	10	10	10	10	10	10	10	10	10	10	10	10	10	10	10	10	10	10	10	10	10	10	10	10	10	10	10	10	10	10	10	10	10	10	10	10
Lynchburg Ferries	10	10	10	10	10	10	10	10	10	10	10	10	10	10	10	10	10	10	10	10	10	10	10	10	10	10	10	10	10	10	10	10	10	10	10	10
Exxon 3	10	10	10	10	10	10	10	10	10	10	10	10	10	10	10	10	10	10	10	10	10	10	10	10	10	10	10	10	10	10	10	10	10	10	10	10
Morgans Point	10	10	10	10	10	10	10	10	10	10	10	10	10	10	10	10	10	10	10	10	10	10	10	10	10	10	10	10	10	10	10	10	10	10	10	10
75/76	10	10	10	10	10	10	10	10	10	10	10	10	10	10	10	10	10	10	10	10	10	10	10	10	10	10	10	10	10	10	10	10	10	10	10	10
63/64	10	10	10	10	10	10	10	10	10	10	10	10	10	10	10	10	10	10	10	10	10	10	10	10	10	10	10	10	10	10	10	10	10	10	10	10
51/52	10	10	10	10	10	10	10	10	10	10	10	10	10	10	10	10	10	10	10	10	10	10	10	10	10	10	10	10	10	10	10	10	10	10	10	10
37/38	10	10	10	10	10	10	10	10	10	10	10	10	10	10	10	10	10	10	10	10	10	10	10	10	10	10	10	10	10	10	10	10	10	10	10	10
25/26	10	10	10	10	10	10	10	10	10	10	10	10	10	10	10	10	10	10	10	10	10	10	10	10	10	10	10	10	10	10	10	10	10	10	10	10
11/12	10	10	10	10	10	10	10	10	10	10	10	10	10	10	10	10	10	10	10	10	10	10	10	10	10	10	10	10	10	10	10	10	10	10	10	10
1 & 2 Bravo	10	10	10	10	10	10	10	10	10	10	10	10	10	10	10	10	10	10	10	10	10	10	10	10	10	10	10	10	10	10	10	10	10	10	10	10

**NOTE: There is an error with this data this morning. Information is based on Tuesday's PM report.**

# Houston Pilots Wind Chart



## Forecast Confidence



## Example

Sustained wind 13 Knots  
Gusts 18 Knots  
Wind from the N

WS: 13  
G:18  
N

Time Knots	Tue 2pm	Tue 3pm	Tue 4pm	Tue 5pm	Tue 6pm	Tue 7pm	Tue 8pm	Tue 9pm	Tue 10pm	Tue 11pm	Wed 12am	Wed 1am	Wed 2am	Wed 3am	Wed 4am	Wed 5am	Wed 6am	Wed 7am	Wed 8am	Wed 9am	Wed 10am	Wed 11am	Wed 12pm	Wed 1pm	Wed 2pm	Wed 3pm	Wed 4pm	Wed 5pm	Wed 6pm	Wed 7pm	Wed 8pm	Wed 9pm	Wed 10pm	Wed 11pm	Thu 12am	Thu 1am		
610 Bridge	2	2	1	2	3	3	3	2	3	2	3	3	1	3	5	4	5	5	5	7	7	6	5	4	4	4	4	4	4	3	3	3	3	3	3	3	3	
	4	4	3	3	4	4	6	6	9	10	11	9	12	13	7	7	8	8	11	10	9	7	6	6	5	4	4	6	5	4	5	4	5	4	5	5	5	5
Kinder 1	2	2	1	2	3	3	3	2	3	2	3	3	1	4	5	4	5	5	5	7	7	6	5	4	4	4	4	4	3	3	3	2	3	3	3	3	3	
	5	4	3	3	4	4	6	6	9	9	10	11	9	12	13	7	7	8	8	11	10	8	7	6	7	6	6	6	5	4	5	4	5	4	4	5	5	5
Greens Bayou	1	2	1	1	4	3	3	3	2	3	4	2	4	5	4	5	5	5	7	7	6	5	4	4	4	4	4	4	3	3	3	2	3	3	3	3	4	
	4	4	3	3	4	5	6	7	10	10	11	12	10	12	13	6	7	7	8	11	10	8	7	6	7	6	6	6	5	4	4	4	4	4	4	5	5	6
Shell Crude	1	2	1	1	4	3	3	2	3	1	3	4	1	4	5	4	5	5	6	7	7	6	5	5	4	4	4	4	3	3	3	3	3	3	3	4	4	
	4	4	3	3	4	5	6	6	10	9	11	12	9	13	13	7	7	8	9	11	10	8	8	6	7	6	6	6	5	4	4	4	4	5	5	5	6	
Lynchburg Ferries	1	2	2	1	4	3	4	3	2	3	4	2	4	5	5	5	5	6	7	7	6	5	5	5	4	4	4	4	3	3	3	3	3	3	4	4	4	
	4	4	4	4	4	6	7	8	11	10	11	12	10	12	13	7	7	8	8	11	10	8	7	6	7	6	6	6	5	4	4	4	4	5	5	6	6	
Exxon 3	1	2	2	1	2	3	4	2	3	2	4	2	5	5	5	5	6	6	6	8	7	6	5	5	5	5	4	4	4	4	4	3	4	4	4	4	4	
	4	4	4	3	6	8	8	10	10	11	12	10	13	13	8	8	8	9	11	10	8	8	7	7	6	6	6	5	5	5	5	5	5	5	6	6	6	6
Morgans Point	1	1	2	2	1	2	3	2	2	4	5	5	3	7	8	7	7	8	8	9	8	7	6	6	5	5	5	5	5	5	5	4	5	5	5	5	5	
	4	4	4	3	1	5	7	7	9	11	12	10	14	14	9	9	10	11	12	11	12	11	9	9	8	8	7	7	6	6	6	6	6	6	6	6	7	7
75/76	1	1	2	2	1	1	2	2	3	4	6	7	6	12	13	11	11	11	11	11	10	8	7	6	6	6	6	6	6	6	6	6	6	6	6	6	6	7
	4	4	4	3	1	3	4	5	5	8	12	12	10	15	16	12	12	13	13	13	13	12	11	10	9	9	8	8	7	7	7	6	6	7	7	7	8	
63/64	2	1	1	2	2	0	0	2	3	3	8	7	6	13	14	12	13	13	13	13	13	11	9	7	7	6	6	6	6	6	6	6	6	6	6	6	7	
	4	3	3	2	2	2	3	4	5	11	11	9	16	17	14	14	14	14	14	14	13	11	11	9	9	8	8	7	7	6	6	7	7	7	7	7	8	
51/52	4	2	1	1	2	1	0	2	3	3	7	6	5	12	14	12	13	13	13	12	11	9	8	7	6	6	6	6	6	6	5	5	6	6	6	6	7	
	5	3	3	1	2	3	2	2	4	4	10	9	8	15	17	13	14	14	14	14	13	11	11	9	8	8	8	7	6	6	6	6	6	6	7	7	7	8
37/38	5	3	1	0	1	1	1	2	4	4	7	5	4	11	14	12	12	13	13	13	13	11	10	9	7	7	6	6	6	6	5	5	6	6	6	7	7	
	5	3	3	1	1	3	3	4	5	8	7	7	14	19	13	14	14	14	14	14	13	12	11	9	8	8	8	7	7	6	6	6	6	7	7	7	8	
25/26	4	2	2	0	0	2	2	2	3	5	5	4	4	10	13	11	11	12	12	12	11	10	9	8	7	7	6	6	5	5	5	6	6	6	6	6	7	
	5	2	3	1	1	3	4	4	4	5	7	7	7	14	21	13	13	14	14	14	14	13	12	11	10	9	8	8	7	7	6	6	7	7	7	7	7	
11/12	3	1	2	1	0	2	3	2	2	5	5	5	4	10	13	11	11	12	12	12	12	11	10	8	8	7	7	6	6	6	6	6	6	6	6	7	7	
	5	2	2	1	1	4	4	4	4	5	8	9	8	16	22	13	13	14	14	14	13	12	11	10	9	8	8	7	7	7	7	7	7	7	7	8	8	
1 & 2 Bravo	4	1	1	1	1	3	3	2	2	5	6	7	6	14	16	14	15	15	15	15	14	13	11	9	9	8	8	8	8	8	8	8	8	8	8	9	9	
	6	3	3	2	2	6	5	4	7	9	10	9	8	20	22	16	16	17	17	17	16	16	14	12	11	10	9	9	9	9	9	9	9	9	9	10	10	

**NOTE: There is an error with this data this morning. Information is based on Tuesday's PM report. Refer to Day 1 slide for more information on wind forecast.**

## Forecast Discussion

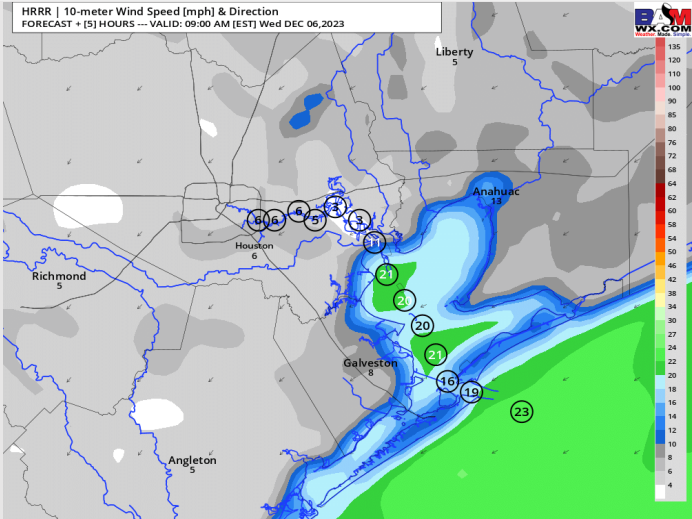
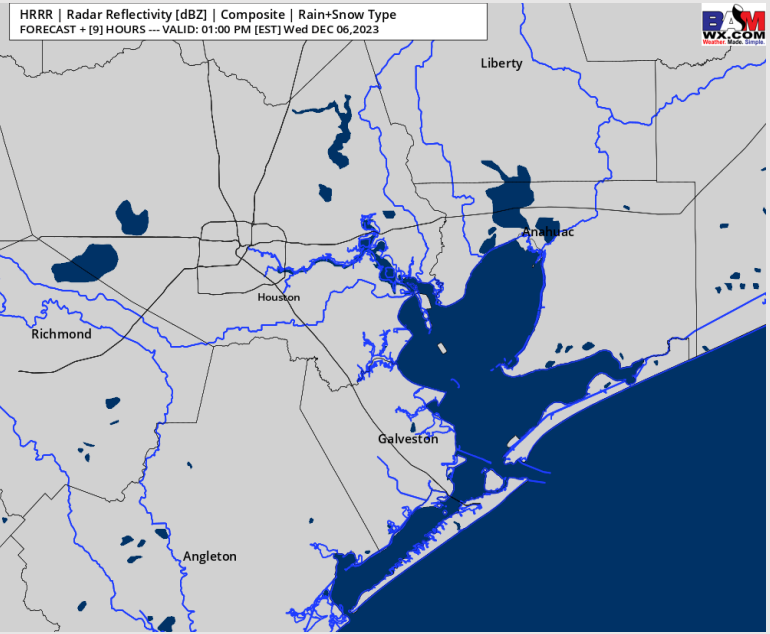
**Precip:** Favoring dry conditions for today.

**Wind:** Winds will continue to veer from the N to the ENE through the morning hours. Peak wind speeds will be during the AM hours. **N of Morgan's Point:** Sustained at 5 - 10 kts prior to 11AM, then 3 - 8 kts for the remainder of the day. **S of Morgan's Point:** 14 - 18 kts for the AM hours. After 12PM, 5 - 10 kts are favored for the remainder of the day. 11/12 and Boarding Station Winds can be a touch higher at 16 - 19 kts in the AM. After 12PM, winds will be 8 - 13 kts for the remainder of the period. **A few gusts for locations S of Shell Crude of 25 - 30 kts can't be ruled out until 11 AM.**

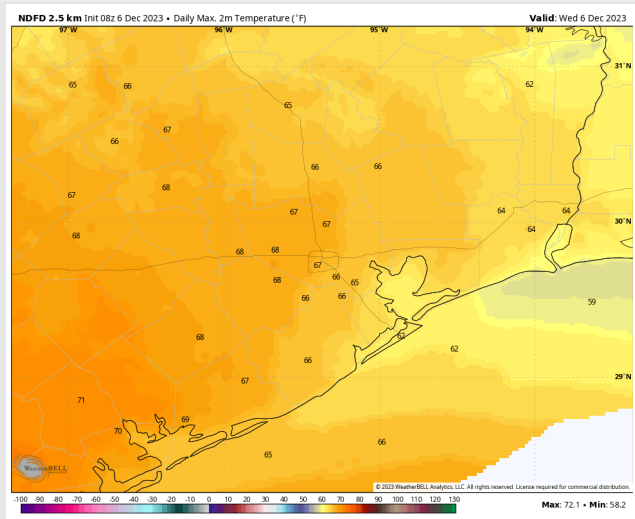
**High Temps:** **N of Morgan's Point:** Mid 60s F **S of Morgan's Point:** Low 60s F.

**Visibility:** No visibility concerns favored for today.

## Precip Image: 12 PM CT



Wind Speed:  
8 AM CT



High Temps  
Today

# Houston Pilots: Thur. 12/07/2023



## Forecast Discussion

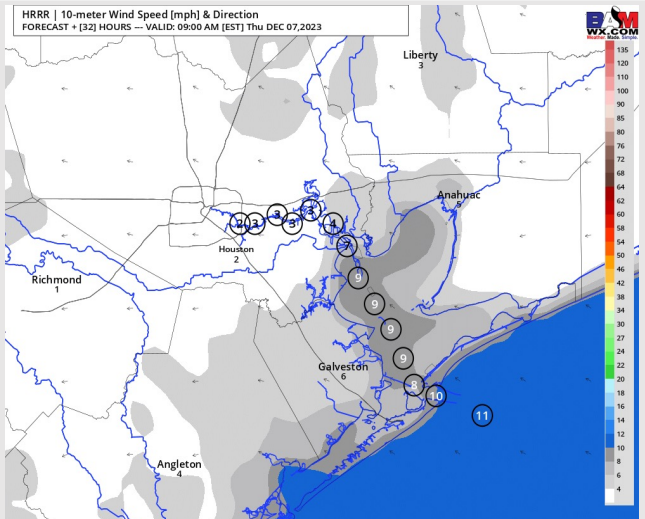
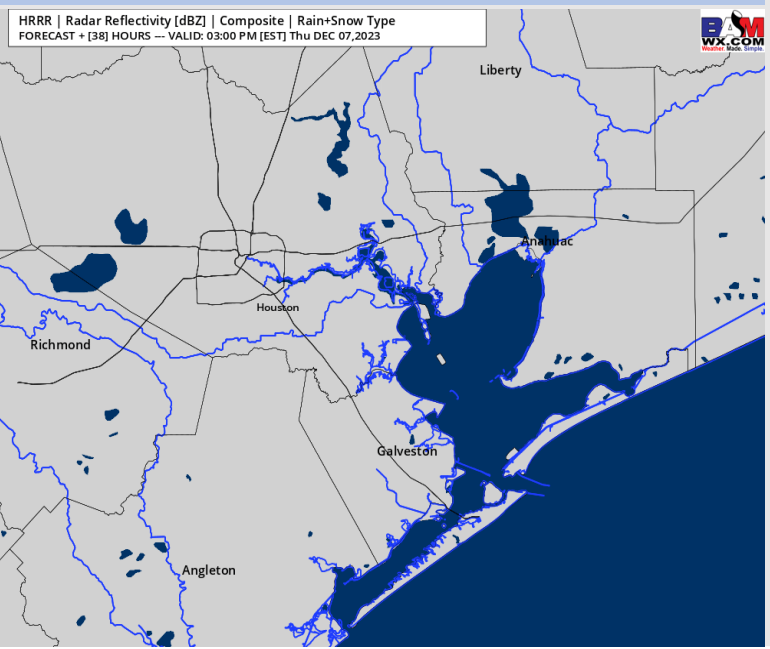
**Precip:** Dry conditions favored throughout the day Thursday.

**Wind:** Winds out of the SE throughout the day. **N of Morgan's Point:** 3-8 kts through the early afternoon, with winds becoming 5 - 10 kts after 2PM. **S of Morgan's Point:** 7 - 11 kts throughout the day. 9-13 kts towards the Boarding Station through 9 AM will be likely.

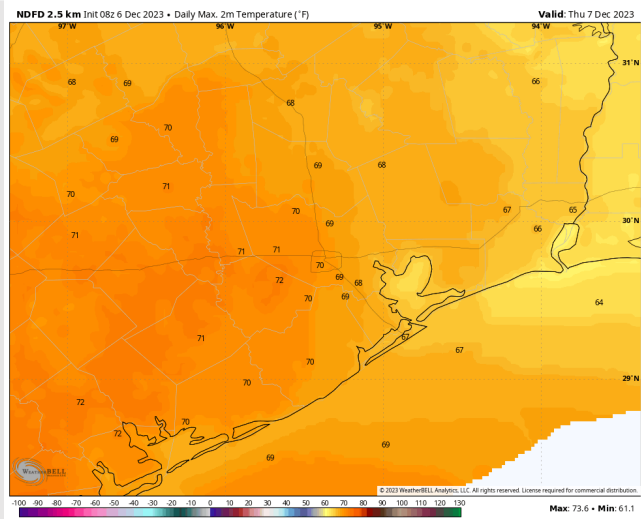
**High Temps:** **N of Morgan's Point:** Near 70 F **S of Morgan's Point:** Mid 60s F.

**Visibility:** No visibility concerns for Thursday.

## Precip Image: 2 PM CT



**Wind Speed:  
8 AM CT**



**High Temps  
Thursday**

## Forecast Discussion

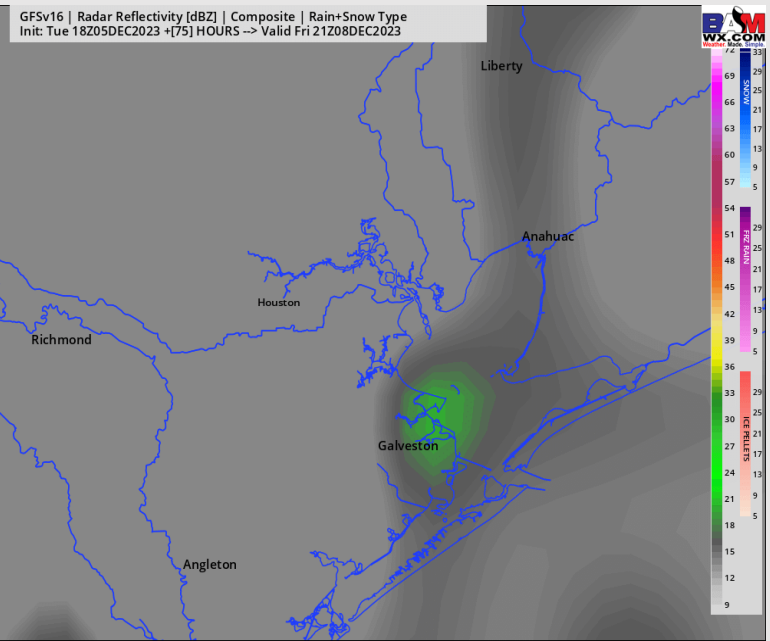
**Precip:** Favoring mostly dry conditions, with low end risks for drizzle / light showers between 2PM and 6PM CT.

**Wind:** Calm and variable winds are expected through the AM hours before increasing during the afternoon / evening as front approaches out of the southeast. **N of Morgan's Point:** Winds to start at 4 - 8. kts, becoming 10 - 14 kts after 2PM. **S of Morgan's Point:** Winds to start at 5 - 9 kts, becoming 12 - 16kts after 12PM. Winds towards the boarding station will reach 13 - 18 kts after 12PM, increasing to 14 - 19 kts by 6PM

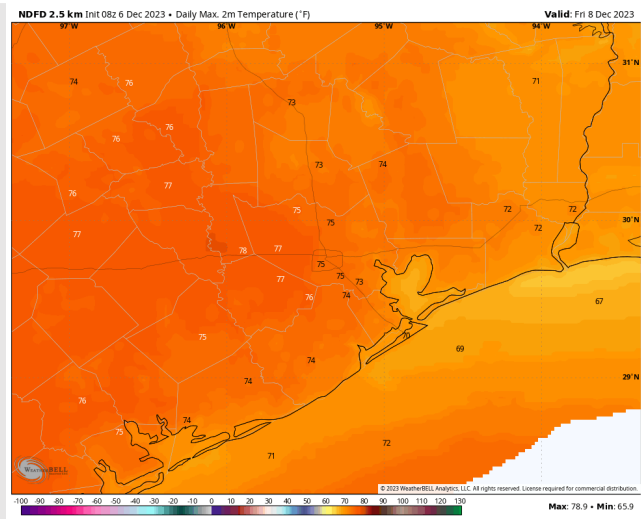
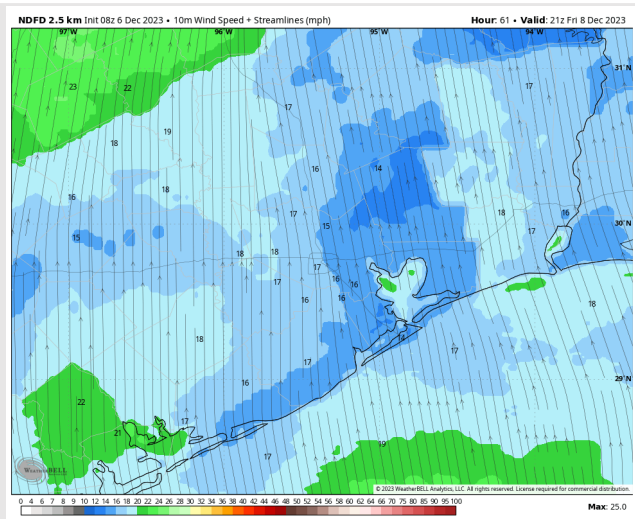
**Low Temps:** **N of Morgan's Point:** Mid 70s F **S of Morgan's Point:** Mid to upper 60s F.

**Visibility:** Not anticipating any visibility concerns at this time.

## Precip Image: 5 PM CT

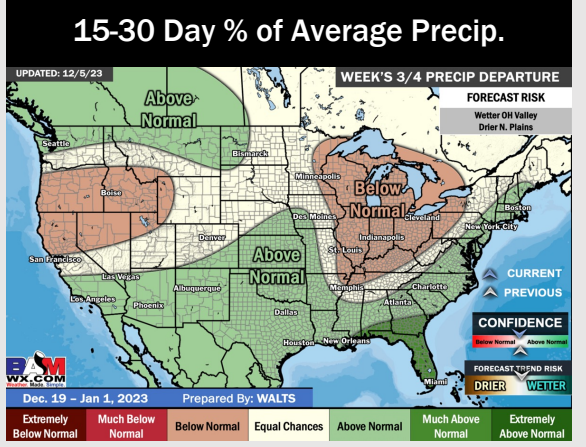
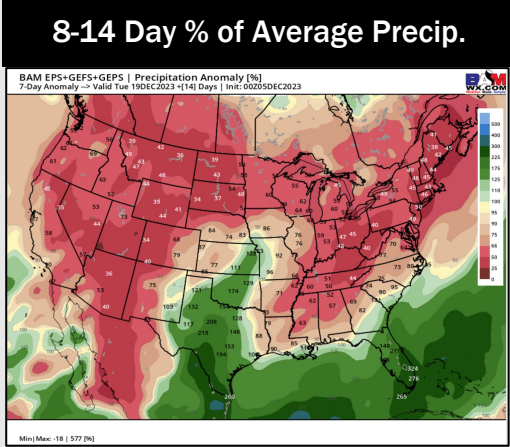
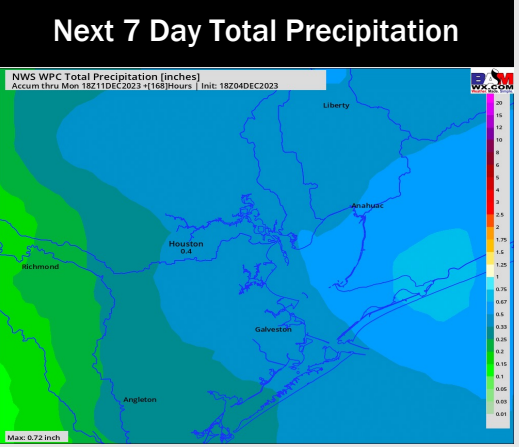
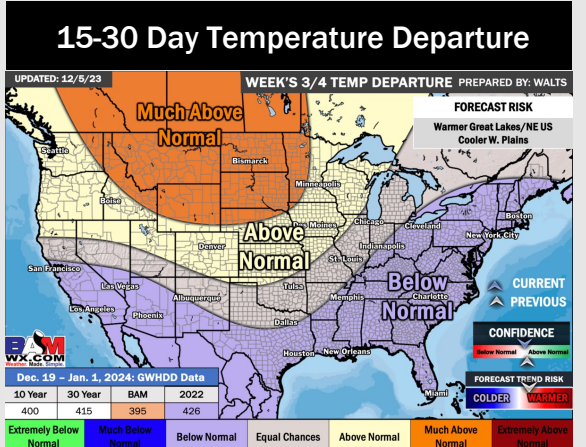
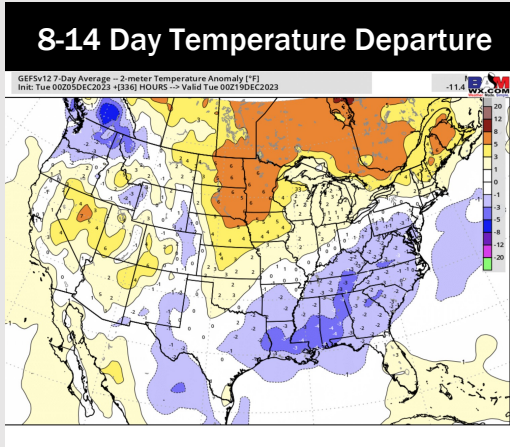
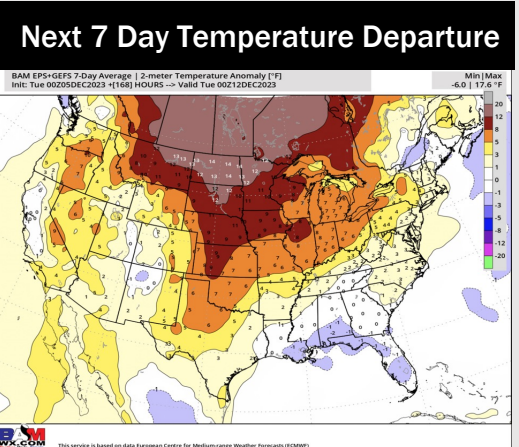


Wind Speed:  
5 PM CT



High Temps  
Friday

# Houston Pilots: 12/6/23



- Not anticipating much in the way of rain over the week ahead. Next best shot at rain will be on the 9<sup>th</sup> via a cold front. Warmer than normal weather is expected this week.
- Seasonable rainfall and below normal temperatures are expected into the week 2 timeframe.
- Below normal temperatures and above normal chances for precipitation are favored in the weeks 3/4 timeframe.