

Houston Pilots Forecast Package



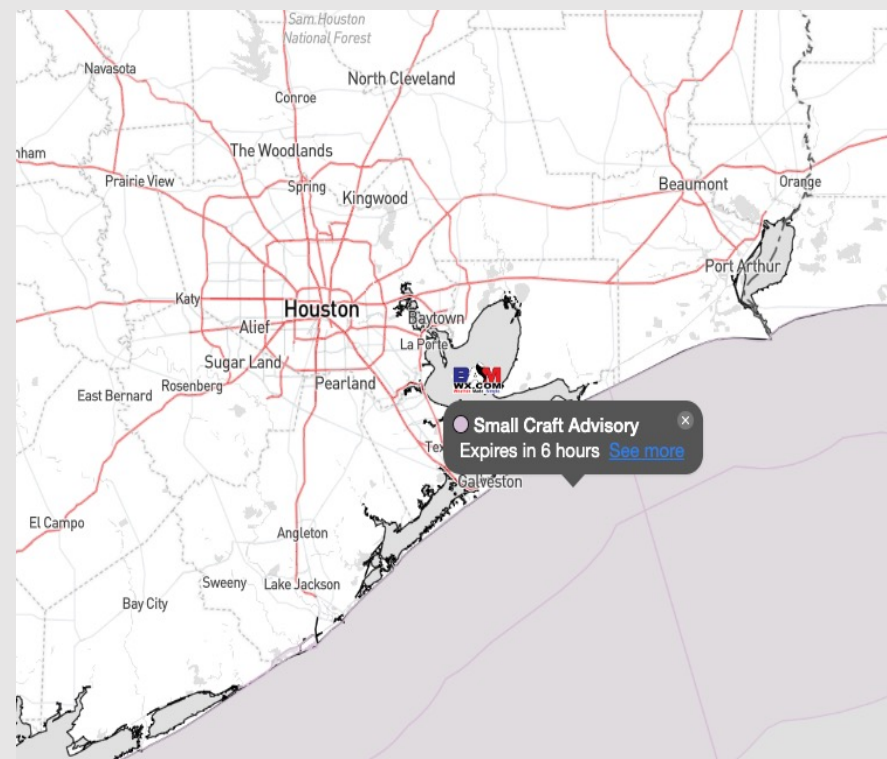
Updated: 12:00 AM CT

Sunday, December 17, 2023

Forecaster: Jonathan Kipper

Weather Headlines

- Winds will continue to decline this morning, with wind speeds remaining less than 20 kts gusts beyond 8 AM.
- **Wave heights will continue to decrease through the morning however will not be back to below 3 ft until 12 PM Sunday.**
- Not favoring any visibility issues over the coming days for fog.



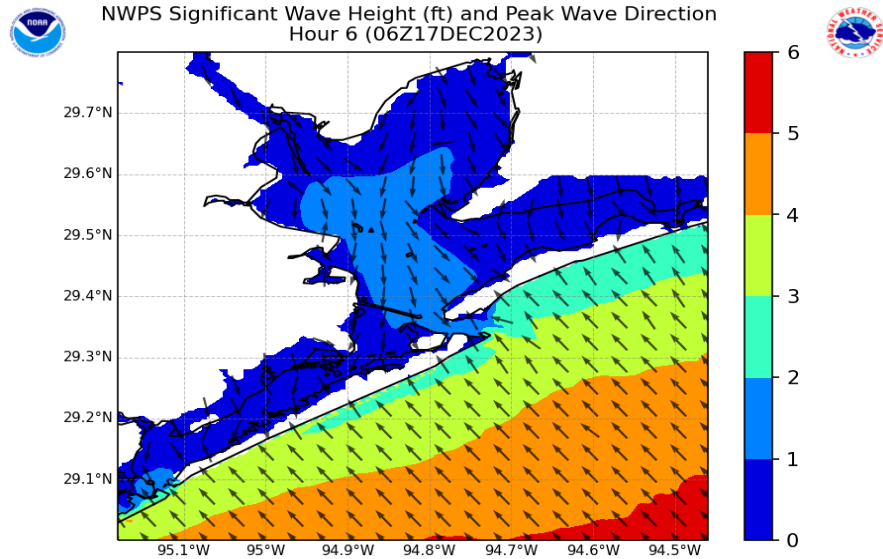
Radar/NWS Alerts: 11:50 PM CT



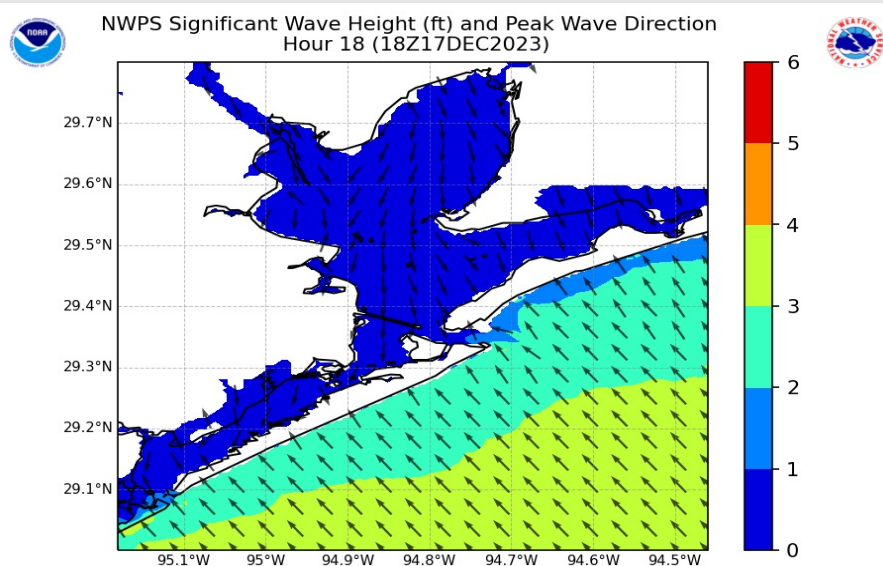
As always, please do not hesitate to reach out to us with any forecast questions via the chat option on the Weather Porthole or our on-call number, **(317)-560-8122** press 1 for forecast questions.

Houston Pilots Wave Height Update

Significant Wave Height Image



1 AM CT SUN



12 PM CT SUN

With the gradual decline in wind speeds this morning, wave heights will also diminish. Current heights of 3-4 feet will continue to slowly decrease this morning.

By 12 PM, calmer waters with wave heights of 3 ft or less can be anticipated into the afternoon hours.

Houston Pilots Extended Range Visibility Report



Wednesday 12/20/23

Would at the earliest keep an eye on Wednesday AM for sea fog. There is a stable atmosphere in place, but limited low level moisture is the only hindrance at this time.

Forecast Confidence



Friday 12/22/23

Not anticipating any fog at this time, however will need to keep an eye on timing of front as reduced visibilities may be possible under heavier downpours.

Forecast Confidence



Thursday 12/21/23

The same situation as WED– would need to monitor low level saturation, but this day would have a higher chance than Wednesday for sea fog.

Forecast Confidence



Chance for Fog

Wednesday AM	Low - End
Wednesday PM	Unlikely
Thursday AM	Possible
Thursday PM	Unlikely
Friday AM	Unlikely
Friday PM	Unlikely

Houston Pilots Visibility Chart (miles)



Time	Sat 11pm	Sun 12am	Sun 1am	Sun 2am	Sun 3am	Sun 4am	Sun 5am	Sun 6am	Sun 7am	Sun 8am	Sun 9am	Sun 10am	Sun 11am	Sun 12pm	Sun 1pm	Sun 2pm	Sun 3pm	Sun 4pm	Sun 5pm	Sun 6pm	Sun 7pm	Sun 8pm	Sun 9pm	Sun 10pm	Sun 11pm	Mon 12am	Mon 1am	Mon 2am	Mon 3am	Mon 4am	Mon 5am	Mon 6am	Mon 7am	Mon 8am	Mon 9am	Mon 10am
610 Bridge	10	10	10	10	10	10	10	10	10	10	10	10	10	10	10	10	10	10	10	10	10	10	10	10	10	10	10	10	10	10	10	10	10	10	10	10
Kinder 1	10	10	10	10	10	10	10	10	10	10	10	10	10	10	10	10	10	10	10	10	10	10	10	10	10	10	10	10	10	10	10	10	10	10	10	10
Greens Bayou	10	10	10	10	10	10	10	10	10	10	10	10	10	10	10	10	10	10	10	10	10	10	10	10	10	10	10	10	10	10	10	10	10	10	10	10
Shell Crude	10	10	10	10	10	10	10	10	10	10	10	10	10	10	10	10	10	10	10	10	10	10	10	10	10	10	10	10	10	10	10	10	10	10	10	10
Lynchburg Ferries	10	10	10	10	10	10	10	10	10	10	10	10	10	10	10	10	10	10	10	10	10	10	10	10	10	10	10	10	10	10	10	10	10	10	10	10
Exxon 3	10	10	10	10	10	10	10	10	10	10	10	10	10	10	10	10	10	10	10	10	10	10	10	10	10	10	10	10	10	10	10	10	10	10	10	10
Morgans Point	10	10	10	10	10	10	10	10	10	10	10	10	10	10	10	10	10	10	10	10	10	10	10	10	10	10	10	10	10	10	10	10	10	10	10	10
75/76	10	10	10	10	10	10	10	10	10	10	10	10	10	10	10	10	10	10	10	10	10	10	10	10	10	10	10	10	10	10	10	10	10	10	10	10
63/64	10	10	10	10	10	10	10	10	10	10	10	10	10	10	10	10	10	10	10	10	10	10	10	10	10	10	10	10	10	10	10	10	10	10	10	10
51/52	10	10	10	10	10	10	10	10	10	10	10	10	10	10	10	10	10	10	10	10	10	10	10	10	10	10	10	10	10	10	10	10	10	10	10	10
37/38	10	10	10	10	10	10	10	10	10	10	10	10	10	10	10	10	10	10	10	10	10	10	10	10	10	10	10	10	10	10	10	10	10	10	10	10
25/26	10	10	10	10	10	10	10	10	10	10	10	10	10	10	10	10	10	10	10	10	10	10	10	10	10	10	10	10	10	10	10	10	10	10	10	10
11/12	10	10	10	10	10	10	10	10	10	10	10	10	10	10	10	10	10	10	10	10	10	10	10	10	10	10	10	10	10	10	10	10	10	10	10	10
1 & 2 Bravo	10	10	10	10	10	10	10	10	10	10	10	10	10	10	10	10	10	10	10	10	10	10	10	10	10	10	10	10	10	10	10	10	10	10	10	10

NOTE: This is automated data that may/may not agree with the official BAM thinking that's found on the daily slides or special visibility report slides. This data should be used as a guide only

Houston Pilots Wind Chart



Forecast Confidence



Example

Sustained wind 13 Knots
Gusts 18 Knots
Wind from the N

WS: 13
G:18
N

Time Knots	Sat 11pm	Sun 12am	Sun 1am	Sun 2am	Sun 3am	Sun 4am	Sun 5am	Sun 6am	Sun 7am	Sun 8am	Sun 9am	Sun 10am	Sun 11am	Sun 12pm	Sun 1pm	Sun 2pm	Sun 3pm	Sun 4pm	Sun 5pm	Sun 6pm	Sun 7pm	Sun 8pm	Sun 9pm	Sun 10pm	Sun 11pm	Mon 12am	Mon 1am	Mon 2am	Mon 3am	Mon 4am	Mon 5am	Mon 6am	Mon 7am	Mon 8am	Mon 9am	Mon 10am
610 Bridge	3	3	2	3	3	2	3	3	3	2	4	4	4	4	3	4	3	4	2	2	2	2	2	2	2	2	2	2	2	2	3	3	3	4	6	6
	8	10	9	10	9	8	8	8	8	8	10	9	7	5	4	6	5	4	4	3	2	2	2	2	2	2	2	2	2	2	4	4	5	5	6	9
	NW	NNW	WNW	NNW	NNW	NNW	NNW	NW	NW	NNW	N	N	NNW	NW	NW	NW	WNW	WNW	W	WSW	SSW	SSW	SSW	SSW	SSW	SW	SW	WSW	W	W	W	WNW	WNW	NW	N	
Kinder 1	3	3	2	3	3	3	3	3	3	2	4	4	4	4	3	4	3	3	2	2	2	2	2	2	2	2	2	2	2	2	3	3	3	4	6	6
	8	10	9	10	9	8	8	8	8	8	11	9	7	5	4	6	5	4	4	2	2	2	2	3	3	3	3	4	4	3	4	4	5	5	6	9
	NW	NNW	NW	NNW	NNW	NNW	NNW	NW	NW	NNW	N	N	NNW	NW	NW	NW	WNW	WNW	W	SW	SSW	SSW	SSW	SSW	SSW	SW	SW	WSW	W	W	W	WNW	WNW	NW	N	
Greens Bayou	3	3	3	3	3	3	3	3	3	2	4	4	4	4	3	4	3	3	2	2	2	2	2	2	2	2	2	2	2	2	3	3	3	4	6	6
	9	10	9	9	9	8	8	8	8	8	11	9	7	6	4	6	5	4	4	2	2	2	2	3	3	3	3	4	4	3	4	4	5	5	6	9
	NW	NNW	N	NNW	NNW	NNW	NNW	NW	NW	NW	N	N	N	NNW	NW	NW	NW	WNW	W	SSW	S	SSW	SSW	SSW	SW	SW	WSW	WSW	W	W	W	W	WNW	WNW	NW	N
Shell Crude	4	4	3	3	3	3	3	3	3	2	4	4	4	4	3	4	4	3	2	2	2	2	2	2	2	2	2	2	2	3	3	3	3	4	6	6
	9	10	9	9	9	8	8	8	8	7	11	10	8	6	4	6	5	4	3	2	2	2	2	2	2	2	2	2	2	3	3	3	4	5	6	9
	NW	NNW	N	NNW	NNW	NNW	NNW	NW	NW	NW	N	N	N	NNW	NNW	NW	NW	NW	WSW	S	SSW	SSW	SSW	SSW	SW	SW	WSW	WSW	W	W	WNW	W	WNW	NW	N	
Lynchburg Ferries	4	4	3	3	3	3	3	3	3	2	4	4	4	4	3	4	4	3	2	2	2	2	2	2	2	2	2	2	2	3	3	3	3	4	6	6
	10	10	9	9	8	8	9	8	8	7	11	10	8	7	5	6	6	5	4	3	2	3	3	3	3	3	4	4	4	4	4	5	5	5	6	9
	NW	NNW	NNW	NNW	NNW	NNW	NNW	NW	NW	NW	N	N	NNW	NNW	NW	NW	NW	NW	W	S	SSW	SSW	SSW	SSW	SW	SW	WSW	WSW	W	W	WNW	W	WNW	NW	N	
Exxon 3	4	4	3	3	3	3	3	3	3	3	4	4	4	4	3	4	4	3	2	2	2	2	2	2	2	2	2	2	2	3	3	3	4	4	6	6
	10	10	10	9	9	9	9	9	8	7	11	10	8	7	5	6	6	5	4	3	3	3	3	3	3	4	4	4	4	5	5	6	6	6	9	
	NW	NNW	NNW	NNW	NNW	NNW	NNW	NNW	NW	NW	NNW	N	NNW	NNW	NNW	NNW	WNW	WNW	WSW	S	SSW	SSW	SSW	SSW	SW	SW	WSW	WSW	W	W	WNW	W	WNW	NW	N	
Morgans Point	5	6	5	4	4	4	5	5	4	4	5	4	4	3	2	4	4	4	4	3	3	3	3	3	3	3	4	4	4	4	4	5	5	5	7	6
	10	11	11	10	10	9	10	9	9	8	12	10	8	7	5	7	7	6	5	4	4	4	4	4	5	4	5	5	5	5	6	6	6	7	9	
	NW	NNW	NNW	NNW	NNW	NNW	NNW	NNW	NW	NW	NNW	N	NNW	NNW	W	WNW	WNW	W	SW	SSW	SSW	SSW	SW	SW	SW	SW	WSW	WSW	W	W	WNW	WNW	WNW	NW	NNW	
75/76	8	9	9	8	8	8	8	8	7	7	7	5	4	2	1	4	5	5	5	5	4	4	4	4	4	4	4	5	5	5	6	6	7	7	8	7
	11	13	12	10	10	10	11	10	9	10	12	10	8	7	6	7	7	7	6	6	5	4	4	4	4	5	5	6	6	6	7	7	7	8	9	
	NNW	NNW	NNW	N	N	NNW	NNW	NNW	NNW	NNW	N	N	NNW	W	SSE	W	WSW	SW	SSW	SSW	SSW	SSW	SW	SW	WSW	WSW	WSW	WSW	W	W	WNW	WNW	WNW	NW	NNW	
63/64	9	11	11	9	9	9	10	9	9	9	8	6	4	2	1	4	4	5	5	5	4	3	3	3	3	4	4	4	5	5	5	6	6	7	8	7
	11	13	13	11	11	11	12	12	10	11	12	10	8	7	6	6	6	7	5	6	5	4	4	4	4	4	5	5	6	6	7	7	8	8	9	
	NNW	NNW	NNW	N	N	N	N	NNW	NNW	NNW	N	N	NNW	W	S	WNW	W	WSW	SSW	SSW	SSW	SSW	SW	SW	WSW	WSW	WSW	WSW	W	W	WNW	WNW	WNW	NW	NNW	
51/52	9	11	12	10	10	10	10	10	9	9	9	7	5	3	1	4	4	4	4	4	4	3	3	3	3	3	4	4	5	5	5	6	6	7	8	7
	12	13	16	14	13	13	13	13	12	12	12	11	8	7	6	6	6	6	5	5	4	4	4	4	4	4	4	5	5	6	6	7	7	8	9	
	NNW	NNW	NNW	N	ESE	N	N	NNW	NNW	NNW	NNW	N	NW	SW	NW	WNW	W	SW	SW	SW	SW	SW	SW	WSW	WSW	WSW	WSW	W	W	WNW	WNW	WNW	WNW	NW	NNW	
37/38	10	10	12	11	10	10	10	10	9	9	9	8	6	4	3	4	4	4	4	4	3	2	2	2	3	3	4	4	4	5	5	6	6	7	8	8
	13	13	17	16	15	14	13	13	12	12	12	11	8	7	7	6	6	6	4	5	4	4	4	3	4	4	4	5	5	6	6	7	7	8	9	
	NNW	NNW	NNW	N	NNE	N	N	NNW	N	NNW	N	SSE	N	NNW	SW	NNW	NNW	NW	WSW	SW	SW	SW	WSW	WSW	WSW	WSW	WSW	W	W	WNW	WNW	WNW	WNW	NW	NNW	
25/26	10	9	11	11	10	10	9	9	9	9	8	6	5	4	5	4	4	3	3	2	2	2	2	2	3	3	4	4	4	5	5	6	6	7	8	7
	15	13	16	17	15	14	13	13	12	12	12	11	8	7	7	7	6	6	4	4	4	3	3	3	3	4	4	5	5	6	6	7	7	8	9	
	NNW	NNW	NNW	NNW	NNE	N	N	N	NNW	N	NNE	NNW	NNW	W	NNW	NNW	NW	W	SW	SW	SW	SW	WSW	WSW	WSW	WSW	W	W	W	W	WNW	WNW	WNW	WNW	NNW	NNW
11/12	9	8	10	10	9	9	8	8	8	8	9	8	6	5	5	5	4	3	3	3	3	3	3	3	3	3	4	5	5	5	6	6	7	8	8	8
	15	14	16	17	16	15	13	14	13	12	12	10	8	7	8	7	7	6	5	4	4	4	4	3	4	4	5	6	6	6	6	7	7	8	9	
	NNW	N	N	NNW	NNE	N	N	N	N	NNW	N	N	NNW	NNW	NNW	NNW	NW	NW	NW	SW	SW	WSW	WSW	WSW	WSW	WSW	W	W	W	W	WNW	WNW	WNW	NW	NNW	
1 & 2 Bravo	12	11	12	13	12	12	11	11	11	10	10	9	6	5	6	5	5	4	4	4	4	4	4	4	4	4	5	6	7	7	8	8	8	9	9	9
	17	15	17	18	16	17	15	14	14	13	13	10	9	7	7	8	7	7	6	6	5	5	5	5	5	5	6	7	8	8	8	9	9	10	11	10
	N	N	N	SE	N	S	N	N	NNW	NNW	N	N	N	NNW	NW	NW	NW	NW	WNW	W	WSW	WSW	WSW	WSW	WSW	W	W	W	W	W	WNW	WNW	WNW	NW	NNW	

NOTE: This is automated data that may/may not agree with the official BAM thinking that's found on the daily slides or special visibility report slides. This data should be used as a guide only

Houston Pilots: Sun. 12/17/2023

Forecast Discussion

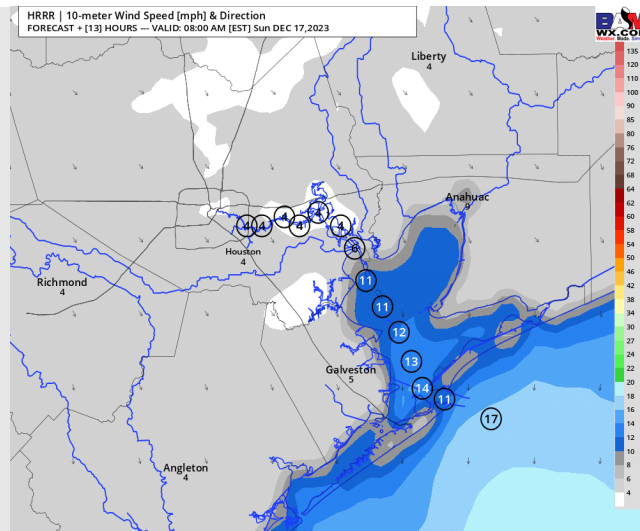
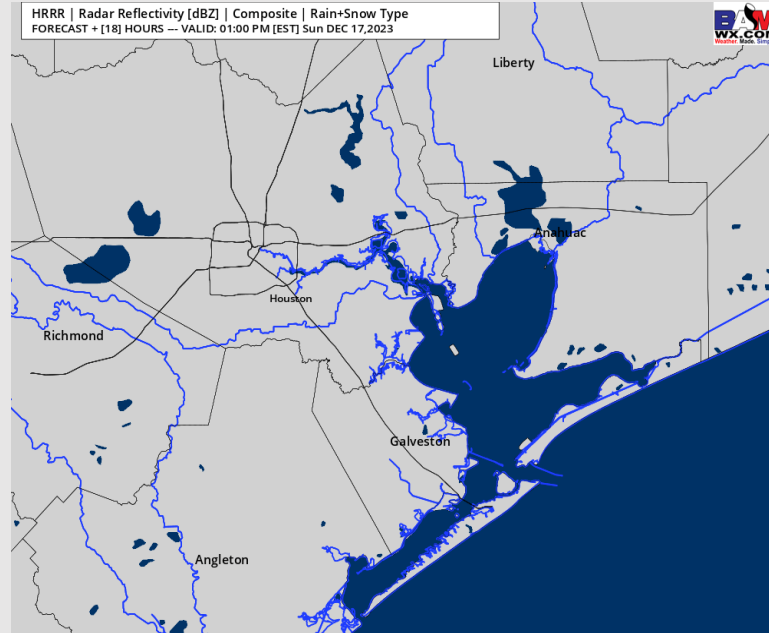
Precip: Dry conditions favored for today.

Wind: Winds will remain out of the NNW for the AM hours today. As winds calm after noon, they will become more variable in direction with favorability from the west before becoming out of the SW by 10 PM. **N of Morgan's Point:** Winds will be 3 - 7 kts for the entire day. **S of Morgan's Point:** Winds at 12 - 17 kts through 5 AM. Winds then begin a slow declining trend, with speeds of 8 - 13 kts by 10 AM, and near-calm winds by 4 PM at 3 - 7kts. **Gusts will decrease to <20 kts at 11/12 and the Boarding Station by 8 AM.**

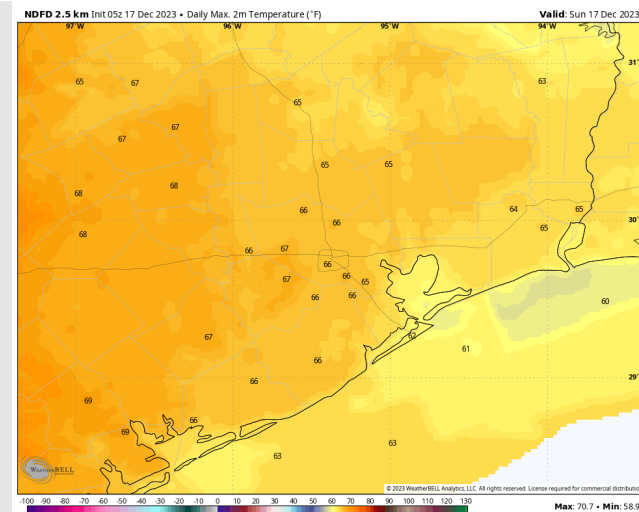
High Temps: **N of Morgan's Point:** Mid 60s F. **S of Morgan's Point:** Upper 50s F to 60 F.

Visibility: Not anticipating any visibility concerns.

Precip Image: 12 PM CT



Wind Speed:
7 AM CT



High Temps
Today

Houston Pilots: Mon. 12/18/2023

Forecast Discussion

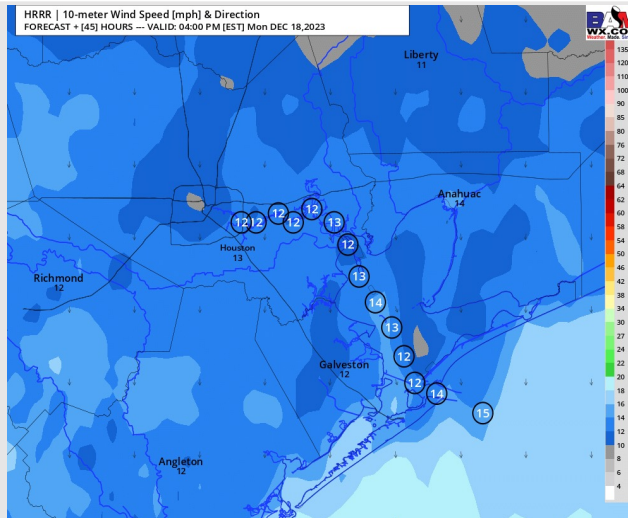
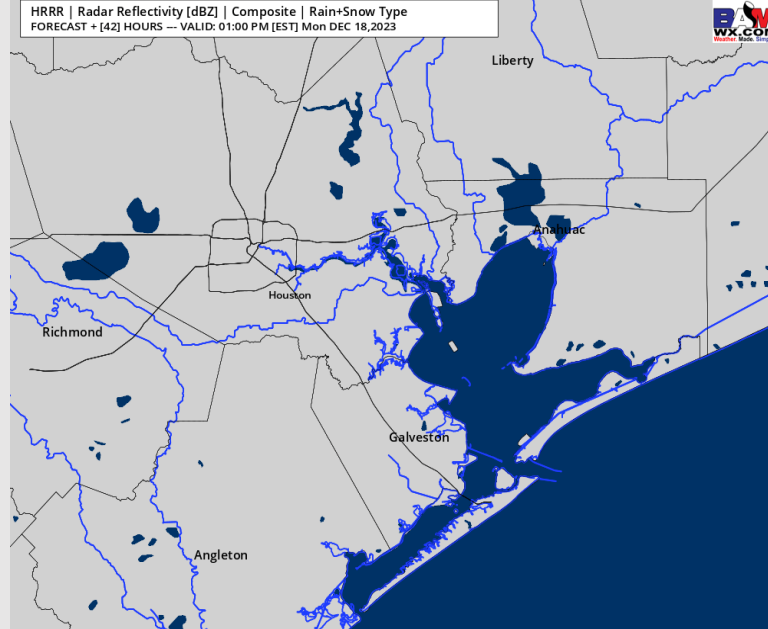
Precip: Dry conditions favored for Monday.

Wind: Winds will be out of the W/SW to start the day before veering to being out of the N/NW by 10 AM. Winds will remain there until being out of the N by 10 PM. **N of Morgan's Point:** 3-8 kts the entire day, with a slight increase to 8-13 kts from 11 AM to 5 PM. **S of Morgan's Point:** 7 - 12 kts for the majority of the day, with winds increasing to 9 - 14 kts at the Boarding Station by 9 PM.

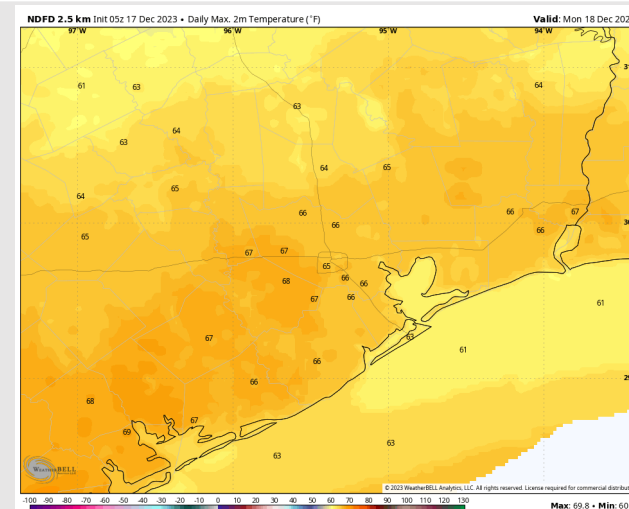
High Temps: **N of Morgan's Point:** Mid 60s F. **S of Morgan's Point:** Low 60s F.

Visibility: Not favoring any fog concerns at this time.

Precip Image: 12 PM CT



Wind Speed:
3 PM CT



High Temps
Monday

Houston Pilots: Tue. 12/19/2023

Forecast Discussion

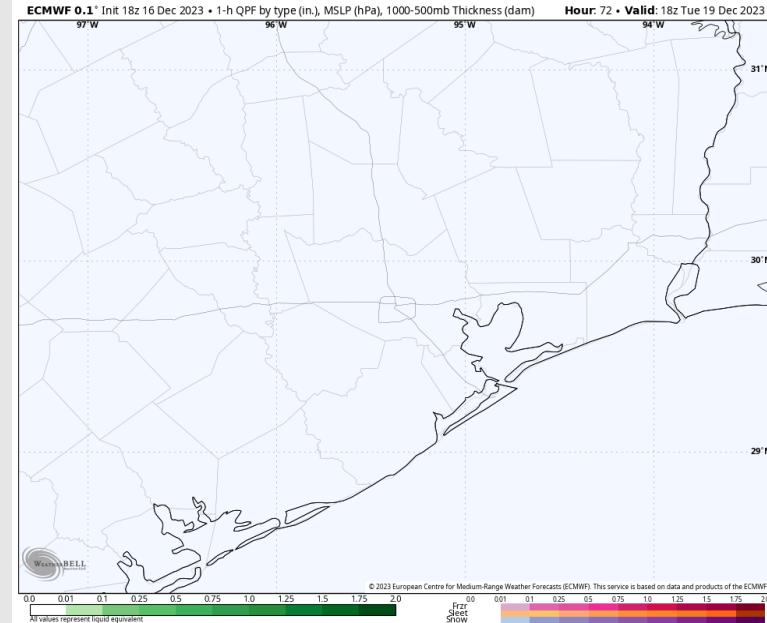
Precip: Dry conditions are favored for Tuesday.

Wind: Winds will slowly veer the entire day. Winds will start out of the N/NE, be out of the E by 10 AM, and out of the SE by 8 PM. **N Morgan's Point:** 6-11 kts the entire day. **S of Morgan's Point:** 10-15 kts the entire day, with a slight increase at Station 11/12 and the Boarding Station of 13-18 kts from 7 AM to 1 PM.

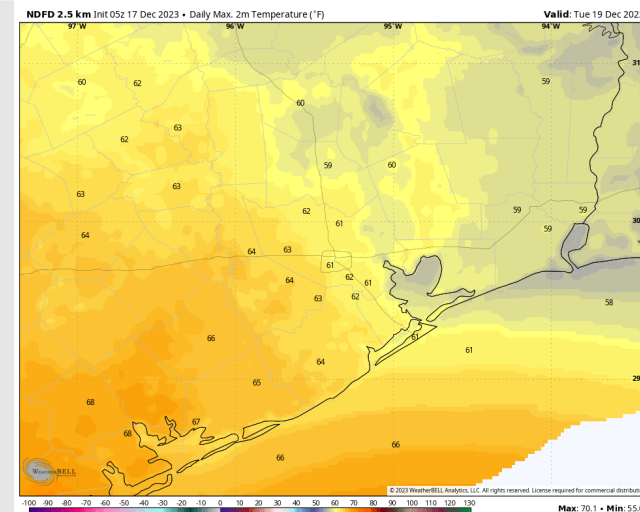
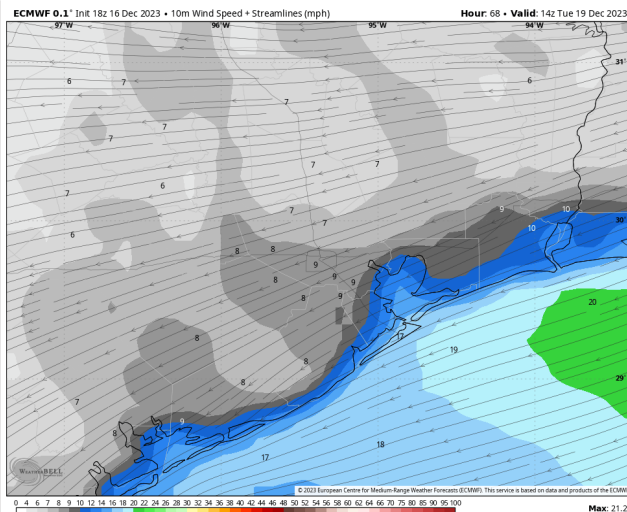
High Temps: **N of Morgan's Point:** Low 60s F. **S of Morgan's Point:** Upper 50s to near 60 F.

Visibility: Not anticipating any visibility concerns

Precip Image: 6 PM CT



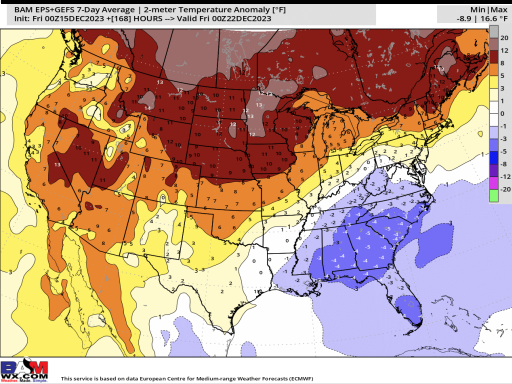
Wind Speed:
8 AM CT



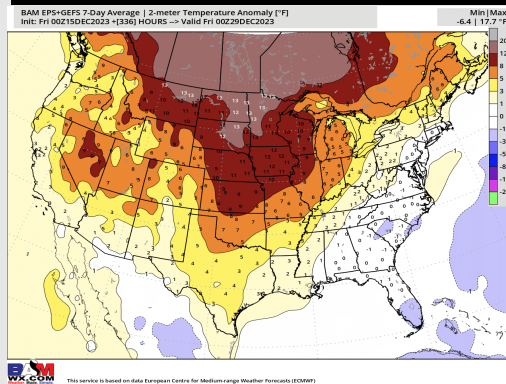
High Temps
Tuesday

Houston Pilots: 12/17/23

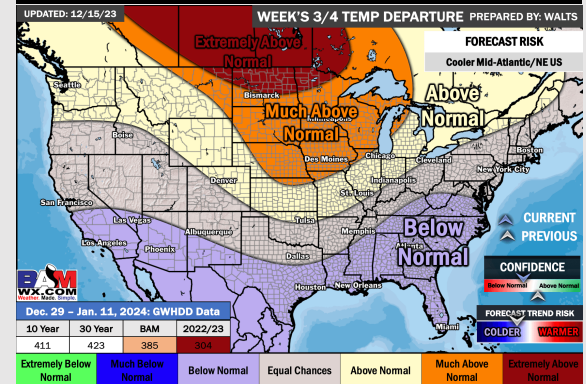
Next 7 Day Temperature Departure



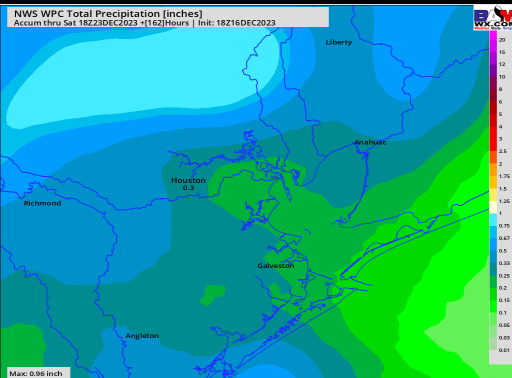
8-14 Day Temperature Departure



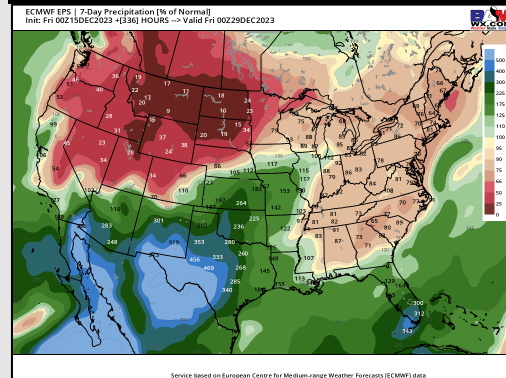
15-30 Day Temperature Departure



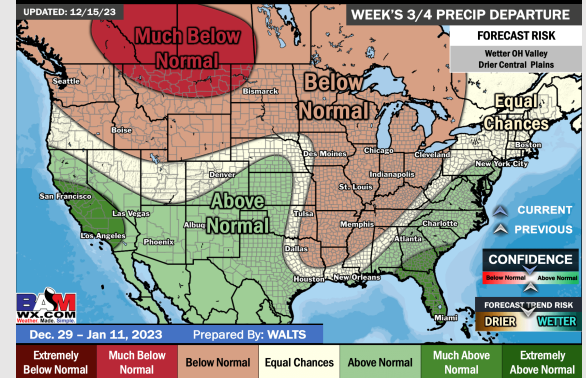
Next 7 Day Total Precipitation



8-14 Day % of Average Precip.



15-30 Day % of Average Precip.



- The next best shot for rain will occur THU/FRI and into the weekend. Seasonable temps are favored this week.
- Above normal precipitation chances and slightly above normal temperatures are expected into the week 2 timeframe.
- Below normal temperatures and slightly above normal chances for precipitation are favored in the weeks ¾ timeframe.