

Houston Pilots Forecast Package



Updated: 4:30 AM CT

Wednesday, November 1, 2023

Forecaster: Vince Bryan

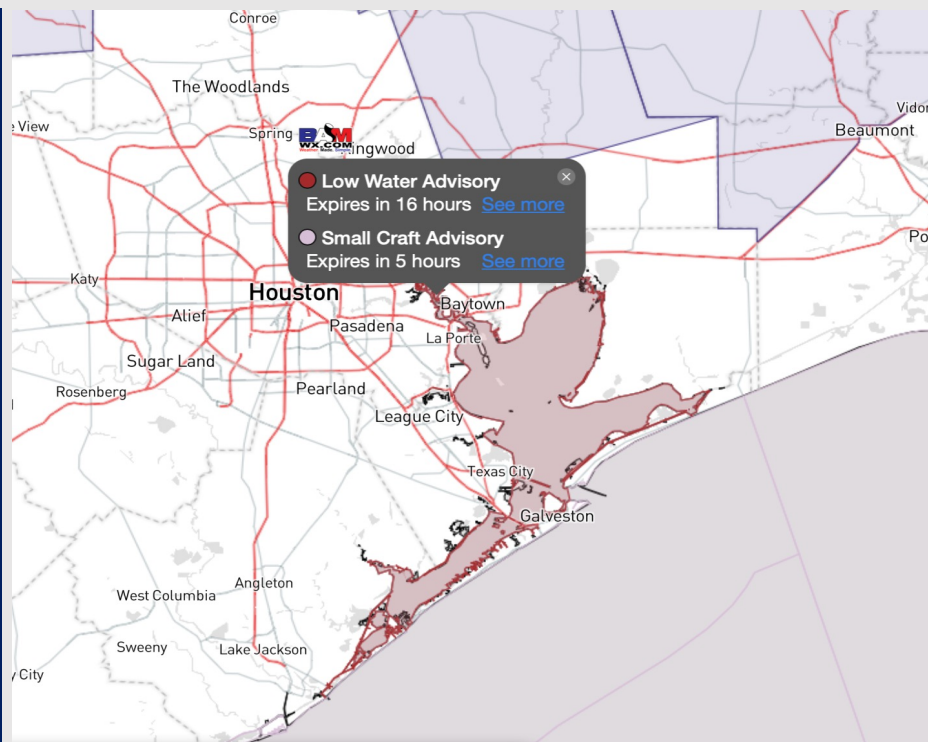
Weather Headlines

➤ Waves at the boarding station of 3-5 feet will be possible through Noon, before tapering off to 2-4 feet in the afternoon and eventually 1-3 feet in the evening.

➤ Aside from minor precip chances this weekend (that look to mainly come west of the area), a drier pattern is favored over the coming days.

➤ No visibility concerns the next few days.

➤ No tropical concerns on the horizon.



Radar/NWS Alerts: 4:30 AM CT



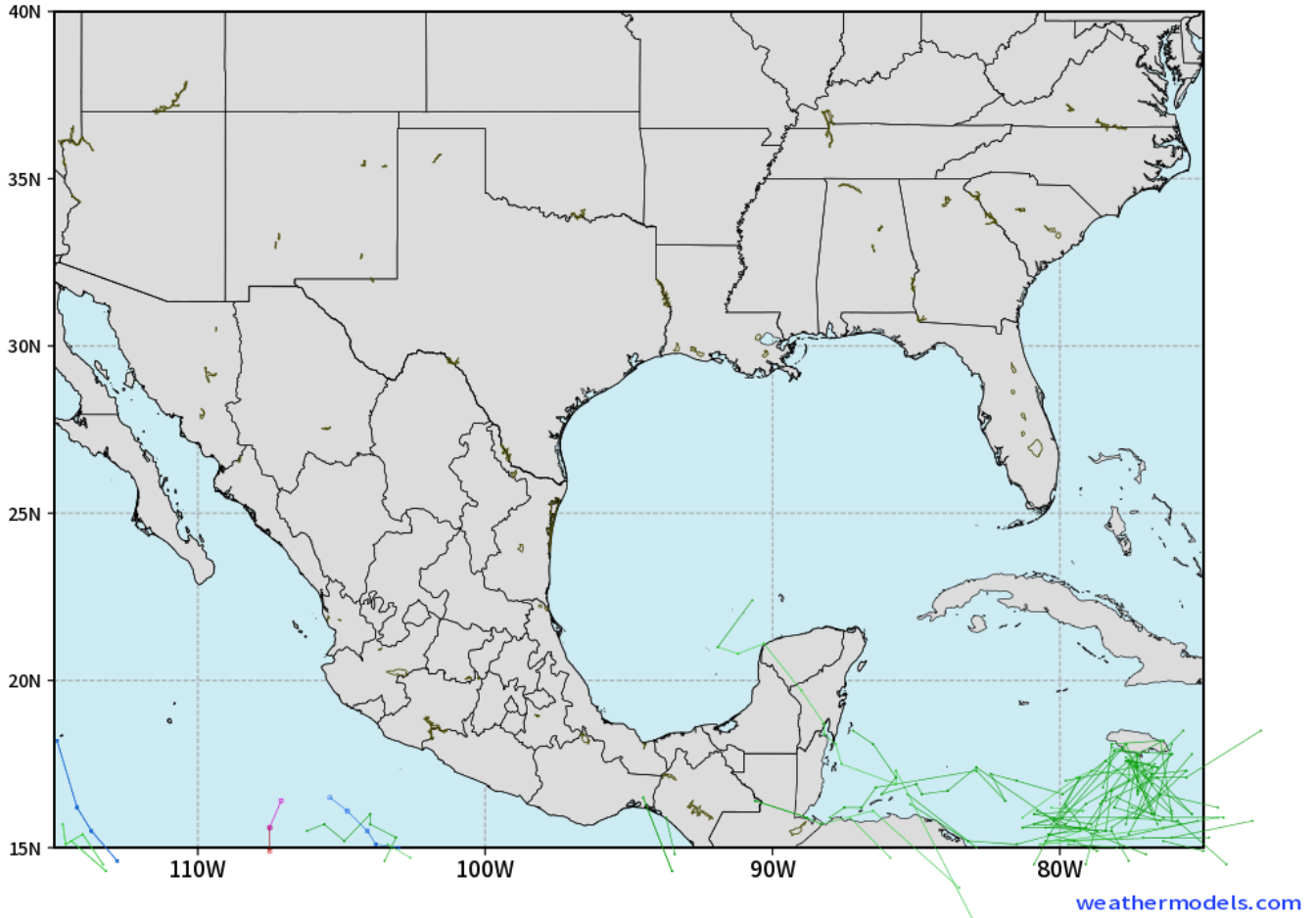
As always, please do not hesitate to reach out to us with any forecast questions via the chat option on the Weather Porthole or our on-call number, **(317)-560-8122** press 1 for forecast questions.

Houston Pilots Tropical Update

European Model Next 10 Days Tropical Tracks

ECMWF GULF EPS Cyclone Locations --> Next [10-days]
INIT: 00Z01NOV2023 --> UNTIL 00Z11NOV2023

o-o ENSEMBLE MEAN
o-o 1000 - 1010 hPa
o-o 980 - 999 hPa
o-o 960 - 979 hPa
o-o 950 - 959 hPa
o-o < 950 hPa



Tropical Development in the Gulf of Mexico is not favored in the next 7-10 days.

Houston Pilots Visibility Chart (miles)



Time	Wed 3am	Wed 4am	Wed 5am	Wed 6am	Wed 7am	Wed 8am	Wed 9am	Wed 10am	Wed 11am	Wed 12pm	Wed 1pm	Wed 2pm	Wed 3pm	Wed 4pm	Wed 5pm	Wed 6pm	Wed 7pm	Wed 8pm	Wed 9pm	Wed 10pm	Wed 11pm	Thu 12am	Thu 1am	Thu 2am	Thu 3am	Thu 4am	Thu 5am	Thu 6am	Thu 7am	Thu 8am	Thu 9am	Thu 10am	Thu 11am	Thu 12pm	Thu 1pm	Thu 2pm	
610 Bridge	10	10	10	10	10	10	10	10	10	10	10	10	10	10	10	10	10	10	10	10	10	10	10	10	10	10	10	10	10	10	10	10	10	10	10	10	10
Kinder 1	10	10	10	10	10	10	10	10	10	10	10	10	10	10	10	10	10	10	10	10	10	10	10	10	10	10	10	10	10	10	10	10	10	10	10	10	10
Greens Bayou	10	10	10	10	10	10	10	10	10	10	10	10	10	10	10	10	10	10	10	10	10	10	10	10	10	10	10	10	10	10	10	10	10	10	10	10	10
Shell Crude	10	10	10	10	10	10	10	10	10	10	10	10	10	10	10	10	10	10	10	10	10	10	10	10	10	10	10	10	10	10	10	10	10	10	10	10	10
Lynchburg Ferries	10	10	10	10	10	10	10	10	10	10	10	10	10	10	10	10	10	10	10	10	10	10	10	10	10	10	10	10	10	10	10	10	10	10	10	10	10
Exxon 3	10	10	10	10	10	10	10	10	10	10	10	10	10	10	10	10	10	10	10	10	10	10	10	10	10	10	10	10	10	10	10	10	10	10	10	10	10
Morgans Point	10	10	10	10	10	10	10	10	10	10	10	10	10	10	10	10	10	10	10	10	10	10	10	10	10	10	10	10	10	10	10	10	10	10	10	10	10
75/76	10	10	10	10	10	10	10	10	10	10	10	10	10	10	10	10	10	10	10	10	10	10	10	10	10	10	10	10	10	10	10	10	10	10	10	10	10
63/64	10	10	10	10	10	10	10	10	10	10	10	10	10	10	10	10	10	10	10	10	10	10	10	10	10	10	10	10	10	10	10	10	10	10	10	10	10
51/52	10	10	10	10	10	10	10	10	10	10	10	10	10	10	10	10	10	10	10	10	10	10	10	10	10	10	10	10	10	10	10	10	10	10	10	10	10
37/38	10	10	10	10	10	10	10	10	10	10	10	10	10	10	10	10	10	10	10	10	10	10	10	10	10	10	10	10	10	10	10	10	10	10	10	10	10
25/26	10	10	10	10	10	10	10	10	10	10	10	10	10	10	10	10	10	10	10	10	10	10	10	10	10	10	10	10	10	10	10	10	10	10	10	10	10
11/12	10	10	10	10	10	10	10	10	10	10	10	10	10	10	10	10	10	10	10	10	10	10	10	10	10	10	10	10	10	10	10	10	10	10	10	10	10
1 & 2 Bravo	10	10	10	10	10	10	10	10	10	10	10	10	10	10	10	10	10	10	10	10	10	10	10	10	10	10	10	10	10	10	10	10	10	10	10	10	10

NOTE: This is automated data that may/may not agree with the official BAM thinking that's found on the daily slides or special visibility report slides. This data should be used as a guide only

Houston Pilots Wind Chart



Forecast Confidence



Example

Sustained wind 13 Knots
Gusts 18 Knots
Wind from the N

WS: 13
G:18
N

Time Knots	Wed 3am	Wed 4am	Wed 5am	Wed 6am	Wed 7am	Wed 8am	Wed 9am	Wed 10am	Wed 11am	Wed 12pm	Wed 1pm	Wed 2pm	Wed 3pm	Wed 4pm	Wed 5pm	Wed 6pm	Wed 7pm	Wed 8pm	Wed 9pm	Wed 10pm	Wed 11pm	Thu 12am	Thu 1am	Thu 2am	Thu 3am	Thu 4am	Thu 5am	Thu 6am	Thu 7am	Thu 8am	Thu 9am	Thu 10am	Thu 11am	Thu 12pm	Thu 1pm	Thu 2pm
610 Bridge	4 10 N	4 10 N	4 10 N	4 10 WSW	4 11 NNE	3 9 NNE	6 15 NE	7 11 ENE	6 11 ENE	4 6 NE	4 3 NNE	4 6 E	4 5 NE	5 6 NNE	5 8 NNE	5 7 NNE	4 6 NNE	4 7 NNE	4 6 NNE	4 4 NE	4 3 NE	3 4 NE	4 5 NE	4 4 NE	4 4 NE	4 4 NE	4 4 NE	4 4 NE	4 4 NE	5 6 ENE	6 8 ENE	5 5 ENE	5 6 ENE	4 5 E	4 5 E	
Kinder 1	4 10 N	4 10 N	4 10 N	4 10 W	4 10 NNE	3 9 NNE	6 15 NE	7 12 NE	7 8 ENE	6 6 NE	7 7 NNE	6 6 NE	6 6 NNE	6 6 NNE	8 7 NNE	7 7 NNE	7 7 NNE	7 7 NNE	7 7 NNE	6 5 NE	5 6 NE	6 5 NE	6 6 NE	6 6 NE	6 6 NE	6 6 NE	6 6 NE	6 6 NE	7 8 ENE	8 7 ENE	7 6 ENE	6 5 E	5 5 E	5 5 E		
Greens Bayou	4 10 N	4 10 NW	4 10 N	4 10 SSE	4 10 NNE	4 9 NNE	3 7 NE	7 12 ENE	7 8 ENE	6 6 NE	4 3 NNE	4 3 NE	4 4 NNE	5 6 NNE	5 8 NNE	5 7 NNE	5 5 NNE	4 4 NNE	4 4 NNE	4 3 NE	4 4 NE	4 3 NE	5 6 NE	6 6 NE	6 6 NE	6 6 NE	6 6 NE	6 6 NE	6 6 NE	7 8 ENE	7 7 ENE	8 7 ENE	6 5 E	5 5 E	5 5 E	
Shell Crude	4 10 N	4 10 W	4 11 NW	4 10 SSE	4 10 NNE	3 9 NNE	7 16 NE	8 12 ENE	6 6 ENE	4 6 NE	4 7 NNE	4 7 NE	5 6 NNE	5 8 NNE	5 7 NNE	5 8 NNE	5 7 NNE	5 7 NNE	5 7 NNE	4 4 NE	4 4 NE	4 4 NE	4 4 NE	4 4 NE	4 4 NE	4 4 NE	4 4 NE	4 4 NE	5 6 ENE	6 7 ENE	5 5 ENE	5 6 ENE	4 5 E	4 5 E		
Lynchburg Ferries	3 9 N	4 11 WSW	4 11 SSW	4 11 NNE	4 10 N	3 10 NNE	7 16 NE	8 12 ENE	6 6 ENE	4 6 NE	4 7 NNE	4 7 NE	5 6 NNE	5 8 NNE	5 7 NNE	6 8 NNE	5 7 NNE	5 5 NNE	5 5 NNE	5 5 NNE	4 4 NE	4 4 NE	4 4 NE	4 4 NE	4 4 NE	5 5 NE	5 5 NE	5 5 NE	5 5 NE	5 6 ENE	6 7 ENE	6 6 ENE	5 6 ENE	5 5 E	4 5 E	
Exxon 3	4 10 N	5 12 WSW	5 14 S	5 13 NE	4 12 N	4 12 NNE	7 16 NE	8 12 ENE	6 6 ENE	5 6 NE	4 3 NNE	4 3 NE	5 6 NNE	5 6 NNE	6 8 NNE	6 8 NNE	6 7 NNE	6 8 NNE	7 8 NNE	7 7 NE	5 5 NE	5 5 NE	5 5 NE	5 5 NE	5 5 NE	5 5 NE	6 6 ENE	6 7 ENE	6 6 ENE	6 6 ENE	6 6 ENE	7 7 ENE	6 6 ENE	6 6 ENE	6 6 ENE	
Morgans Point	6 12 NNW	7 15 WNW	7 17 SW	7 15 NE	6 14 NNE	6 14 NNE	10 16 NE	10 13 ENE	8 7 ENE	6 8 NE	4 3 NNE	3 3 E	4 5 SE	5 6 NNE	8 9 NNE	7 9 NNE	7 8 NNE	7 8 NNE	7 8 NNE	7 7 NE	7 7 NE	7 7 NE	7 7 NE	7 7 NE	7 7 NE	8 8 NE	8 8 NE	8 8 NE	8 8 NE	8 8 NE	8 8 NE	8 8 NE	8 7 ENE	8 7 ENE	7 7 ENE	6 6 ENE
75/76	11 16 S	12 17 W	13 18 ENE	13 16 NNE	12 15 NNE	11 15 NNE	13 16 NE	14 15 ENE	11 9 ENE	8 9 NE	6 6 NE	6 6 ENE	3 2 ENE	3 3 E	10 10 NNE	10 11 NNE	10 11 NNE	10 11 NNE	10 10 NE	10 11 NE	10 11 NE	10 11 NE	10 11 NE	11 12 ENE	11 12 ENE	11 12 ENE	12 13 ENE	12 13 ENE	11 12 ENE	11 12 ENE	11 10 ENE	10 9 ENE	9 8 ENE	6 6 ENE		
63/64	14 17 NNE	15 19 ESE	16 17 N	15 15 NNE	13 14 NNE	14 15 ENE	16 16 NE	15 12 ENE	12 9 ENE	9 8 NE	5 5 NNE	3 3 ENE	2 2 SE	2 2 SE	10 10 NNE	10 10 NNE	10 10 NNE	10 10 NNE	10 10 NE	11 11 NE	11 11 NE	11 11 NE	11 12 ENE	12 12 ENE	12 12 ENE	12 13 ENE	13 13 ENE	12 13 ENE	13 13 ENE	12 12 ENE	11 10 ENE	9 8 ENE	8 7 ENE	7 7 ENE		
51/52	15 18 N	16 19 N	16 17 N	14 15 NNE	13 14 NNE	14 16 NE	14 17 ENE	13 12 ENE	11 8 ENE	8 8 NE	6 8 NE	6 7 NE	3 3 SSE	9 10 NNE	9 10 NNE	10 10 NNE	10 10 NNE	10 10 NE	10 11 NE	11 11 NE	11 11 NE	11 12 ENE	12 12 ENE	12 12 ENE	12 13 ENE	13 14 ENE	13 14 ENE	12 13 ENE	12 12 ENE	11 10 ENE	9 8 ENE	9 9 ENE	9 9 ENE	9 9 ENE		
37/38	15 19 NNE	17 18 N	16 17 NNE	14 15 NNE	13 16 NE	14 17 NE	16 15 ENE	14 12 ENE	12 10 ENE	9 8 NE	8 8 NNE	6 8 NNE	7 8 SSE	6 8 SSE	9 10 NNE	10 10 NNE	10 10 NNE	10 10 NE	10 10 NE	11 11 NE	11 11 NE	11 11 NE	11 12 ENE	12 12 ENE	11 12 ENE	12 13 ENE	13 13 ENE	12 13 ENE	12 12 ENE	11 10 ENE	9 8 ENE	9 9 ENE	8 8 ENE	8 9 ENE		
25/26	14 19 NNE	15 18 NNE	15 18 NNE	13 15 NNE	12 16 NE	13 16 NE	14 15 ENE	13 12 ENE	11 10 ENE	9 8 NE	8 7 NNE	7 7 SW	7 8 SW	8 9 SSW	8 9 NNE	9 9 NNE	9 9 NNE	9 9 NE	9 9 NE	9 9 NE	9 9 NE	9 9 NE	9 10 ENE	9 10 ENE	9 10 ENE	10 10 ENE	10 10 ENE	10 11 ENE	11 11 ENE	10 9 ENE	9 8 ENE	9 9 ENE	8 8 ENE	8 9 ENE		
11/12	13 19 NNE	13 18 NNE	14 18 NNE	12 15 NNE	11 16 NNE	13 16 NE	14 15 ENE	13 12 ENE	11 10 ENE	9 8 NE	8 6 NNE	6 7 NNE	6 6 SE	8 9 NNE	9 9 NNE	9 9 NNE	9 9 NE	9 9 NE	9 9 NE	9 10 NE	10 10 NE	10 10 NE	9 9 NE	9 10 ENE	9 10 ENE	10 10 ENE	10 10 ENE	10 11 ENE	11 11 ENE	10 9 ENE	9 8 ENE	9 9 ENE	8 8 ENE	8 9 ENE		
1 & 2 Bravo	16 20 NNE	16 20 NNE	18 19 NNE	16 17 NNE	15 17 NNE	16 16 NE	15 15 ENE	15 15 ENE	12 11 ENE	10 7 NE	7 6 NNE	6 7 N	7 8 N	8 10 NNE	10 11 NNE	11 11 NNE	11 11 NNE	11 11 NE	11 11 NE	11 11 NE	11 11 NE	11 11 NE	11 11 NE	11 12 ENE	12 12 ENE	11 12 ENE	12 12 ENE	12 13 ENE	12 12 ENE	11 10 ENE	10 9 ENE	9 9 ENE	8 8 ENE	8 9 ENE	9 9 ENE	

NOTE: This is automated data that may/may not agree with the official BAM thinking that's found on the daily slides. This data should be used as a guide only

Houston Pilots: Wed. 11/1/2023



Forecast Discussion

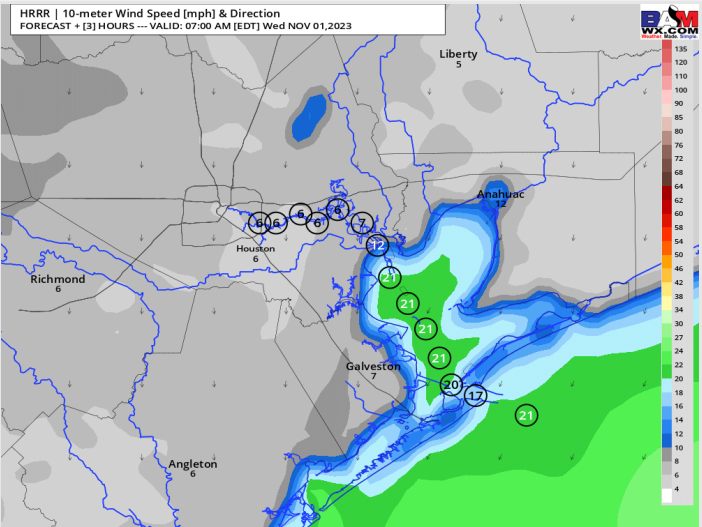
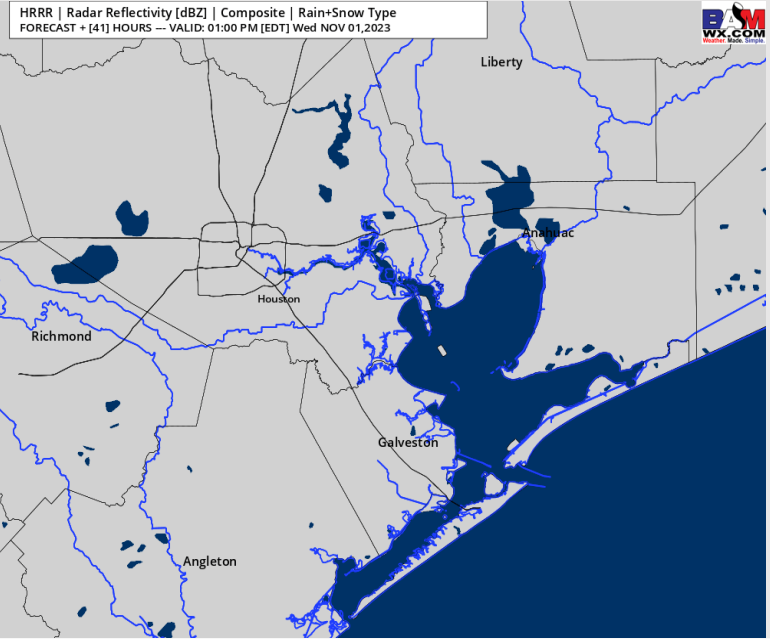
Precip: Favoring dry conditions today.

Wind: Winds will continue out of the NNE today. For Stations **N** of Morgan's Point winds will increase begin the day at 5-10 kts, calming to 3-8 kts after 10 AM. For stations **S** of Morgan's Point winds will begin to weaken to 20 - 25 kts 10 AM (wind gusts 25-30 knots are done by 10 AM, gusts 15-20 knots done by Noon). After 10 AM, winds will begin a **gradual** decrease to sustained 8-13 kts by 2 PM.

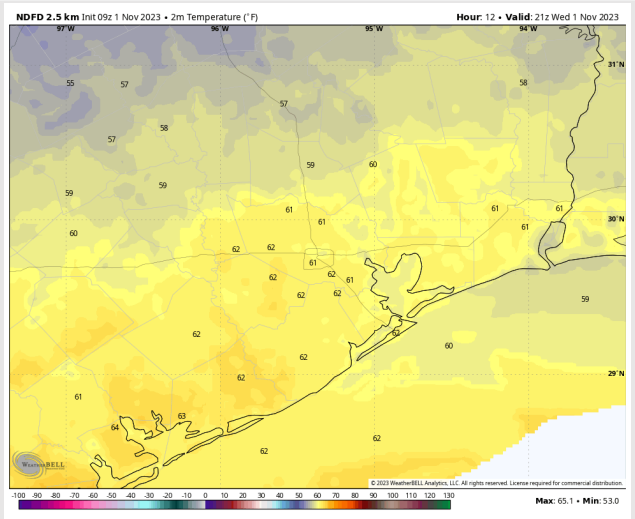
High Temps: **N** of Morgan's Point: Low 60's F **S** of Morgan's Point: Low 60s F

Visibility: Not anticipating any visibility issues at this time.

Precip Image: 12 PM CT



Wind Speed:
6 AM CT



High Temps
Today

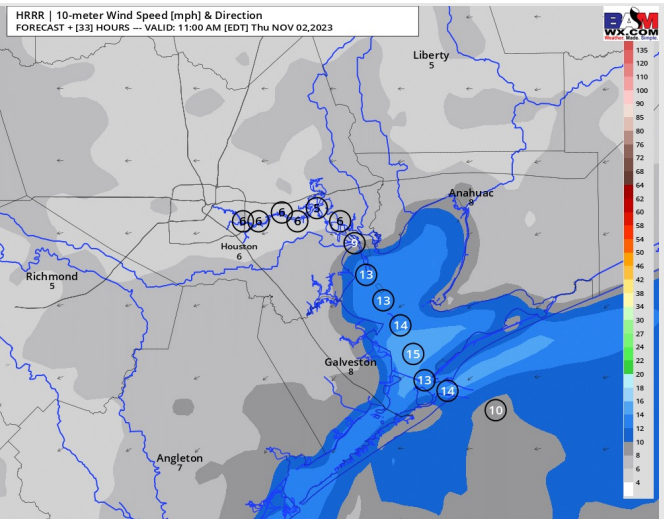
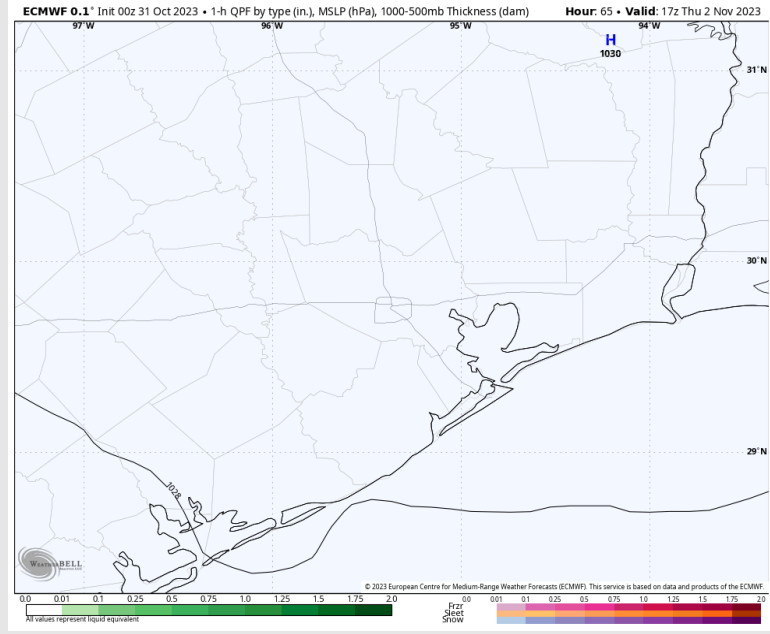
Houston Pilots: Thu. 11/2/2023



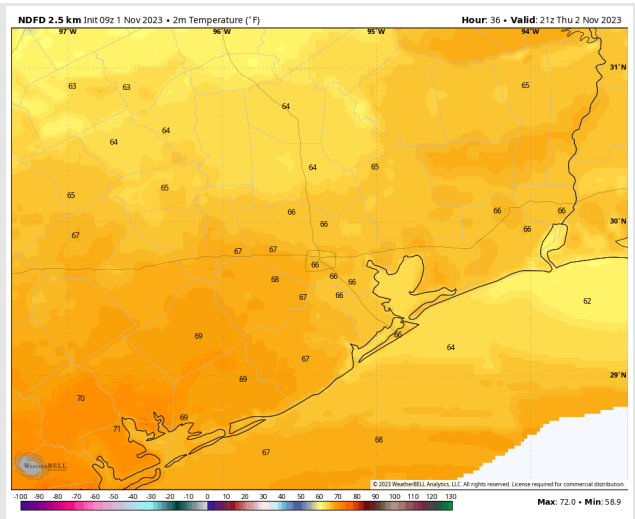
Forecast Discussion

- Precip:** Favoring dry conditions for Thursday.
- Wind:** Winds will be out of the NE through 5 PM before shifting to out of the E/SE the rest of the day Thursday. Winds **N of Morgan's Point** will be at 3 - 8 kts the entire day. **S of Morgan's Point** will be at 10 - 15 kts through 1 PM before slightly decreasing to 8 - 13 kts.
- High Temps:** **N of Morgan's Point:** Mid 60s F. **S of Morgan's Point:** Low-Mid 60s F.
- Visibility:** No visibility concerns for Thursday.

Precip Image: 7 PM CT



Wind Speed
10 AM CT



High Temps
Thursday

Houston Pilots: Fri. 11/3/2023



Forecast Discussion

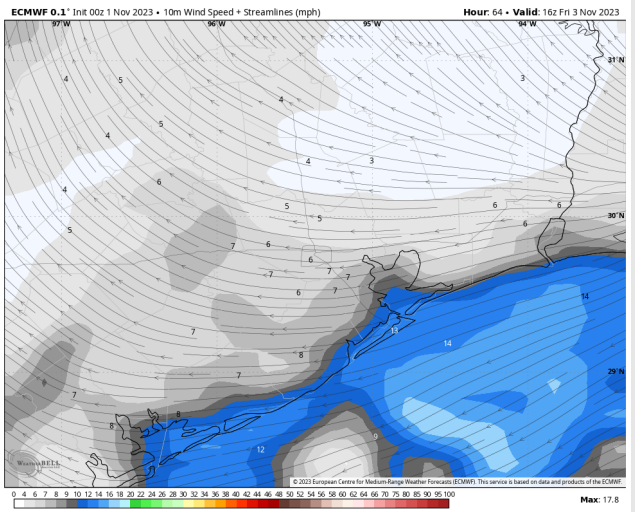
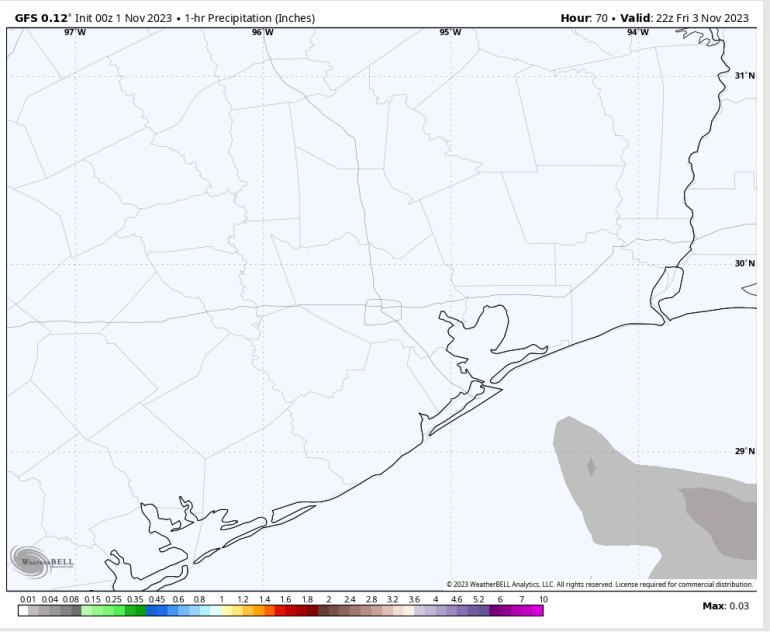
Precip: Outside of 10-20% chance of a few isolated showers near the boarding station Friday evening after ~4 PM, dry conditions are favored Friday.

Wind: N of Morgan's Point: Out of the NE through Noon before turning E/ESE for the PM. Sustained 3-8 kts with gusts 5-10 kts. S of Morgan's Point will be out of the NE through Noon before turning more E/ESE. Expecting sustained much of the day to sit between 10-15 kts (gusting 13-18 kts).

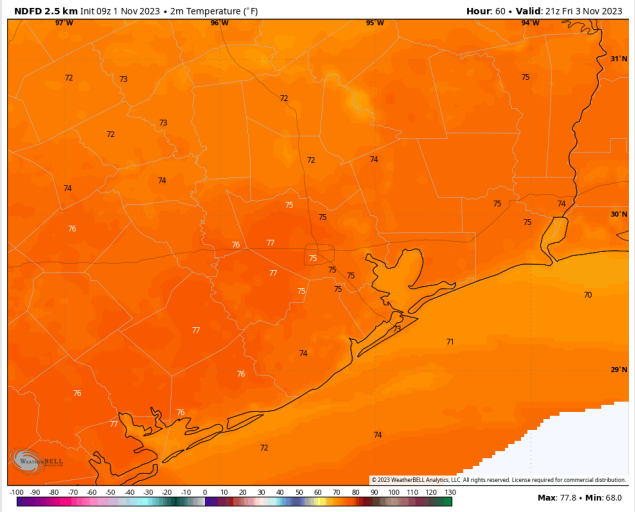
High Temps: N of Morgan's Point: Mid 70's F. S of Morgan's Point: Low 70s F.

Visibility: Not anticipating any visibility issues.

Precip Image: 5 PM CT

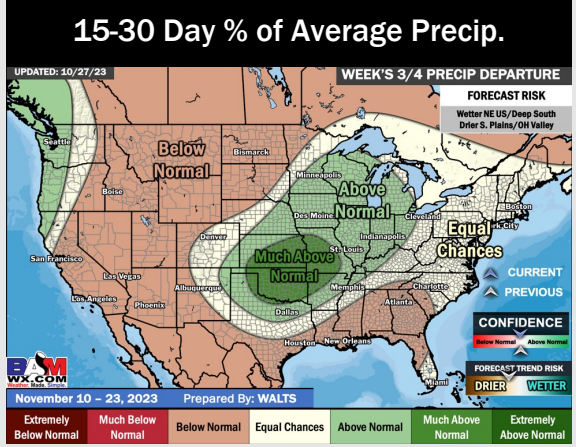
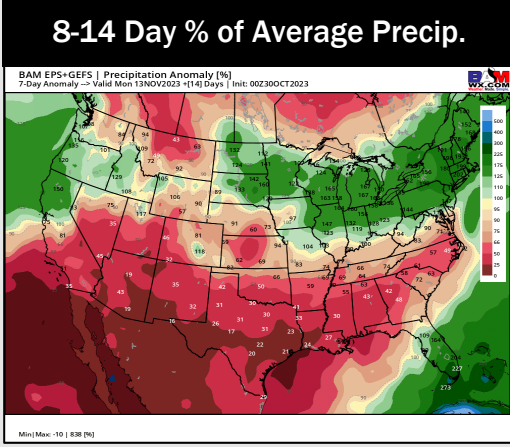
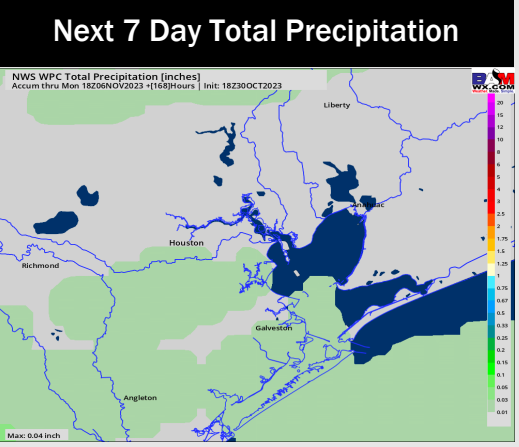
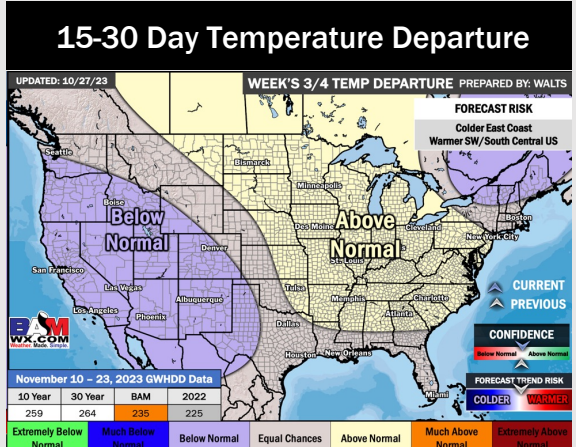
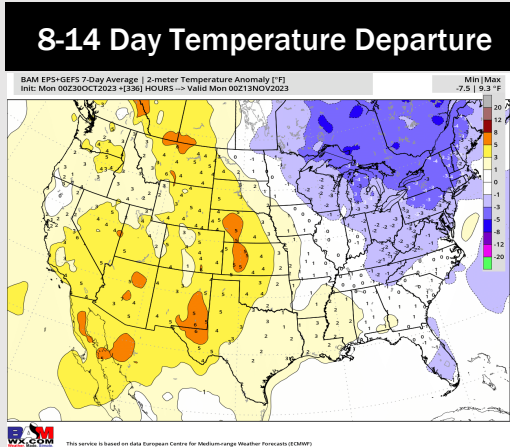
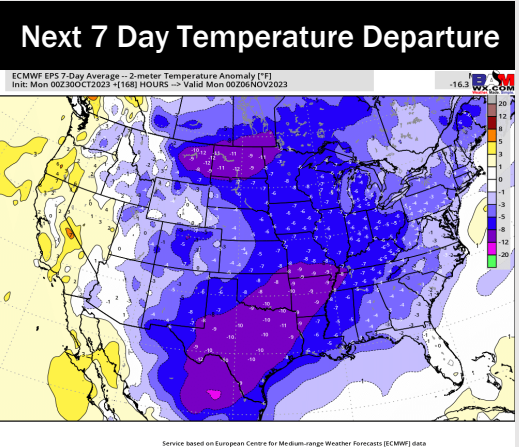


Wind Speed:
9 AM CT



High Temps
Friday

Houston Pilots: 11/1/23



- High pressure settles in behind this current cold front keeping drier conditions with minor chances after the weekend. Temperatures will remain below normal with warmer temperatures returning into the weekend.
- Below normal rainfall and seasonal to slightly above normal temperatures are expected into the week 2 timeframe.
- Seasonal temperatures and below normal chances for precipitation are favored in the weeks 3/4 timeframe.