

# Houston Pilots Forecast Package



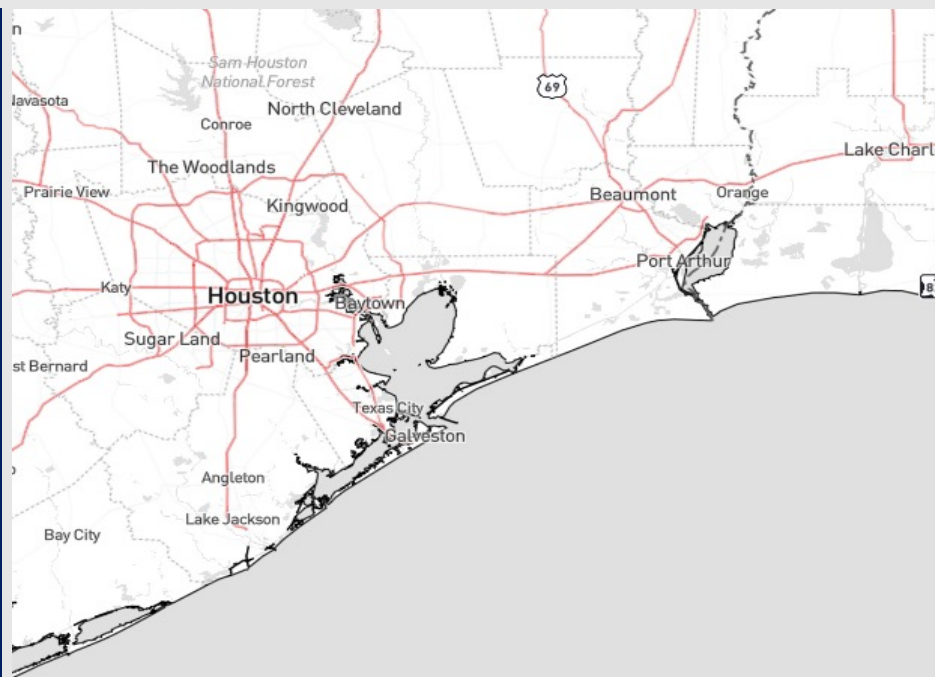
Updated: 1:45 PM CT

Friday, November 24, 2023

Forecaster: Jonathan kipper

## Weather Headlines

- Dry conditions for the rest of today with scattered rain chances SAT/SUN.
- Not anticipating any visibility concerns over the next few days.
- Watching this weekend for some gustier wind potential, especially for the Boarding Station. **More details on the daily slides below.**



Radar/NWS Alerts: 1:45 PM CT



As always, please do not hesitate to reach out to us with any forecast questions via the chat option on the Weather Porthole or our on-call number, **(317)-560-8122** press 1 for forecast questions.

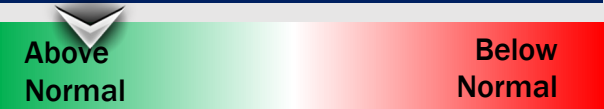
# Houston Pilots Extended Range Visibility Report



**Monday 11/27/23**

No fog concerns for Monday.

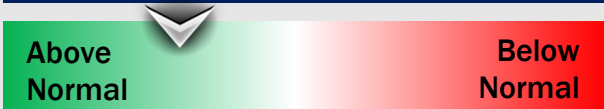
## Forecast Confidence



**Wednesday 11/29/23**

No fog concerns Wednesday.

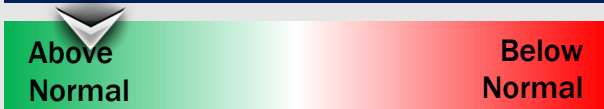
## Forecast Confidence



**Tuesday 11/28/23**

No fog concerns Tuesday.

## Forecast Confidence



## Chance for Fog

Monday AM	Unlikely
Monday PM	Unlikely
Tuesday AM	Unlikely
Tuesday PM	Unlikely
Wednesday AM	Unlikely
Wednesday PM	Unlikely

# Houston Pilots Visibility Chart (miles)



Time	Fri 1pm	Fri 2pm	Fri 3pm	Fri 4pm	Fri 5pm	Fri 6pm	Fri 7pm	Fri 8pm	Fri 9pm	Fri 10pm	Fri 11pm	Sat 12am	Sat 1am	Sat 2am	Sat 3am	Sat 4am	Sat 5am	Sat 6am	Sat 7am	Sat 8am	Sat 9am	Sat 10am	Sat 11am	Sat 12pm	Sat 1pm	Sat 2pm	Sat 3pm	Sat 4pm	Sat 5pm	Sat 6pm	Sat 7pm	Sat 8pm	Sat 9pm	Sat 10pm	Sat 11pm	Sun 12am
610 Bridge	10	10	10	10	10	10	10	10	10	10	10	10	10	10	10	10	10	10	10	10	10	10	10	10	10	10	10	10	10	10	10	10	10	10	10	10
Kinder 1	10	10	10	10	10	10	10	10	10	10	10	10	10	10	10	10	10	10	10	10	10	10	10	10	10	10	10	10	10	10	10	10	10	10	10	10
Greens Bayou	10	10	10	10	10	10	10	10	10	10	10	10	10	10	10	10	10	10	10	10	10	10	10	10	10	10	10	10	10	10	10	10	10	10	10	10
Shell Crude	10	10	10	10	10	10	10	10	10	10	10	10	10	10	10	10	10	10	10	10	10	10	10	10	10	10	10	10	10	10	10	10	10	10	10	10
Lynchburg Ferries	10	10	10	10	10	10	10	10	10	10	10	10	10	10	10	10	10	10	10	10	10	10	10	10	10	10	10	10	10	10	10	10	10	10	10	10
Exxon 3	10	10	10	10	10	10	10	10	10	10	10	10	10	10	10	10	10	10	10	10	10	10	10	10	10	10	10	10	10	10	10	10	10	10	10	8
Morgans Point	10	10	10	10	10	10	10	10	10	10	10	10	10	10	10	10	10	10	10	10	10	10	10	10	10	10	10	10	10	10	10	10	10	10	10	10
75/76	10	10	10	10	10	10	10	10	10	10	10	10	10	10	10	10	10	10	10	10	10	10	10	10	10	10	10	10	10	10	10	10	10	10	10	10
63/64	10	10	10	10	10	10	10	10	10	10	10	10	10	10	10	10	10	10	10	10	10	10	10	10	10	10	10	10	10	10	10	10	10	10	10	10
51/52	10	10	10	10	10	10	10	10	10	10	10	10	10	10	10	10	10	10	10	10	10	10	10	10	10	10	10	10	10	10	10	10	10	10	10	8
37/38	10	10	10	10	10	10	10	10	10	10	10	10	10	10	10	10	10	10	10	10	10	10	10	10	10	10	10	10	10	10	10	10	10	10	10	10
25/26	10	10	10	10	10	10	10	10	10	10	10	10	10	10	10	10	10	10	10	10	10	10	10	10	10	10	10	10	10	10	10	10	10	10	10	10
11/12	10	10	10	10	10	10	10	10	10	10	10	10	10	10	10	10	10	10	10	10	10	10	10	10	10	10	10	10	10	10	10	10	10	10	10	10
1 & 2 Bravo	10	10	10	10	10	10	10	10	10	10	10	10	10	10	10	10	10	10	10	10	10	10	10	10	10	10	10	10	10	10	10	10	10	10	10	10

NOTE: This is automated data that may/may not agree with the official BAM thinking that's found on the daily slides or special visibility report slides. This data should be used as a guide only

# Houston Pilots Wind Chart



Forecast Confidence

Above Normal

Below Normal

Sustained wind 13 Knots  
Gusts 18 Knots  
Wind from the N

Example

WS: 13  
G:18  
N

Time Knots	Fri 1pm	Fri 2pm	Fri 3pm	Fri 4pm	Fri 5pm	Fri 6pm	Fri 7pm	Fri 8pm	Fri 9pm	Fri 10pm	Fri 11pm	Sat 12am	Sat 1am	Sat 2am	Sat 3am	Sat 4am	Sat 5am	Sat 6am	Sat 7am	Sat 8am	Sat 9am	Sat 10am	Sat 11am	Sat 12pm	Sat 1pm	Sat 2pm	Sat 3pm	Sat 4pm	Sat 5pm	Sat 6pm	Sat 7pm	Sat 8pm	Sat 9pm	Sat 10pm	Sat 11pm	Sun 12am
610 Bridge	6	5	5	4	4	2	2	3	3	3	3	4	4	4	4	4	5	4	5	6	7	8	7	7	7	7	7	7	7	6	6	6	6	5	4	4
	8	7	7	6	7	5	4	5	7	10	9	11	11	11	10	7	6	7	7	9	11	11	10	10	10	10	11	11	10	10	10	9	9	8	7	7
	NE	NE	NE	NE	NE	ENE	NE	E	ENE	NE	NE	ENE	ENE	ENE	ENE	ENE	NE	NE	NE	ENE	ENE	ENE	E	E	E	E	E	E	ESE	ESE	ESE	E	E	E	ENE	ENE
Kinder 1	6	5	5	4	4	2	2	3	3	3	3	4	4	5	4	4	5	4	5	6	7	8	7	7	7	7	7	7	7	6	6	6	6	5	4	4
	8	7	6	6	6	5	4	5	8	9	9	11	11	11	10	7	6	7	7	9	11	11	10	10	10	11	11	11	10	10	9	9	9	7	6	7
	NE	NE	NE	NE	ENE	ENE	NE	E	ENE	NE	NE	ENE	ENE	ENE	ENE	ENE	NE	NE	NE	ENE	ENE	ENE	E	E	E	E	E	E	ESE	ESE	ESE	E	E	E	ENE	ENE
Greens Bayou	6	5	5	4	3	3	3	3	3	3	3	4	4	4	4	4	5	4	5	6	7	8	7	7	7	7	7	7	7	6	6	6	5	5	4	4
	8	7	6	6	6	5	5	7	8	9	10	12	11	11	11	6	6	7	7	9	11	10	10	10	10	10	11	10	10	9	9	8	7	6	7	
	NE	NE	NE	NE	NE	ENE	NE	ENE	E	NE	NE	ENE	ENE	ENE	ENE	ENE	NE	NE	NE	ENE	ENE	ENE	E	E	E	E	E	E	ESE	ESE	ESE	E	E	E	ENE	ENE
Shell Crude	6	5	4	4	3	3	3	3	3	3	4	4	4	4	4	5	5	5	5	6	8	8	8	8	7	7	7	8	8	7	6	6	6	5	4	4
	8	7	6	6	6	5	6	7	9	9	10	12	11	11	11	7	6	7	7	9	11	10	10	10	10	11	10	10	10	10	9	8	8	7	7	
	NNE	NE	NE	NE	ENE	E	NE	E	ENE	NE	NE	ENE	ENE	ENE	ENE	ENE	NE	NE	NE	ENE	ENE	ENE	E	E	E	E	E	E	ESE	ESE	ESE	E	E	E	ENE	ENE
Lynchburg Ferries	6	5	4	4	3	3	3	3	3	3	4	4	4	4	4	5	5	5	5	7	8	8	8	7	7	7	7	8	8	7	6	6	6	5	5	5
	8	7	6	6	6	6	8	9	8	8	10	12	11	11	11	7	7	7	7	9	11	10	10	9	10	10	10	11	10	10	9	9	8	7	7	7
	NNE	NE	NE	NE	ENE	ENE	NE	E	E	NE	NE	ENE	ENE	ENE	ENE	ENE	NE	NE	NE	ENE	ENE	ENE	E	E	E	E	E	ESE	ESE	ESE	ESE	E	E	E	ENE	ENE
Exxon 3	6	5	4	4	3	3	3	3	3	4	4	5	5	5	4	6	6	6	6	7	8	8	8	8	8	8	8	8	8	7	7	7	6	5	5	
	8	7	6	5	7	8	8	8	8	8	9	11	12	12	11	8	8	8	8	10	11	10	10	10	10	10	11	11	11	10	10	9	8	7	7	
	NNE	NE	NE	ENE	E	ENE	ENE	E	NE	NE	NE	ENE	ENE	ENE	ENE	ENE	NE	NE	NE	ENE	ENE	ENE	ENE	E	E	E	E	ESE	ESE	ESE	E	E	E	E	ENE	
Morgans Point	6	5	5	5	4	5	4	5	4	5	6	7	7	7	7	8	8	8	8	9	9	9	9	8	8	8	9	9	10	10	9	8	7	7	7	
	8	7	7	6	8	9	8	8	8	10	11	13	13	13	13	10	10	10	10	10	11	12	11	11	11	11	11	11	12	12	11	11	10	9	8	
	NE	NE	ENE	E	E	E	E	E	NE	NE	NE	ENE	ENE	ENE	ENE	ENE	NE	NE	NE	ENE	ENE	ENE	ENE	E	E	E	E	ESE	ESE	ESE	E	E	E	E	ENE	
75/76	7	8	7	6	6	7	6	6	6	7	9	12	13	12	12	12	13	12	12	12	12	11	10	9	9	10	11	12	13	12	12	11	10	9	9	
	10	9	8	8	9	9	8	8	9	9	11	15	16	16	15	13	14	13	14	14	14	13	12	12	12	12	13	14	14	13	13	12	11	10	10	
	NE	ENE	E	E	E	ESE	E	ENE	NE	NE	NE	ENE	ENE	ENE	ENE	ENE	ENE	NE	NE	ENE	ENE	ENE	ENE	E	E	E	E	ESE	ESE	E	E	E	E	E		
63/64	9	9	7	4	5	7	7	7	7	8	10	13	14	14	13	14	14	14	14	14	14	13	12	10	9	10	11	11	12	13	13	13	12	11	10	10
	11	11	9	7	8	8	9	9	10	9	11	16	17	17	16	15	15	15	15	15	15	13	12	12	13	13	13	14	15	15	14	13	12	11	11	
	NE	NE	ENE	ENE	E	ESE	ESE	E	ENE	NE	NE	ENE	ENE	ENE	ENE	ENE	ENE	NE	ENE	ENE	ENE	ENE	ENE	E	E	E	E	ESE	E	E	E	E	E	E		
51/52	9	8	5	4	6	8	8	7	7	8	10	13	14	14	13	13	13	13	13	13	13	13	12	11	10	11	11	12	12	13	12	11	10	10		
	11	10	8	7	7	9	9	10	10	10	12	16	17	17	16	14	14	14	14	14	14	13	12	12	12	13	13	13	14	15	15	13	12	11	11	
	NE	NE	ENE	ENE	ESE	ESE	E	E	ENE	NE	NE	ENE	ENE	ENE	ENE	ENE	ENE	NE	ENE	ENE	ENE	ENE	ENE	E	E	E	E	E	E	E	E	E	E	E		
37/38	9	8	6	5	7	8	7	8	8	8	10	12	13	14	13	12	12	13	13	13	13	13	12	12	12	12	12	12	13	13	12	11	11	11	9	
	11	10	8	7	8	10	10	11	11	11	15	16	16	16	13	14	14	14	14	14	14	13	13	13	13	14	14	14	14	14	13	12	12	11		
	NE	NE	ENE	E	ESE	ESE	E	E	ENE	NE	NE	ENE	ENE	ENE	ENE	ENE	ENE	NE	ENE	ENE	ENE	ENE	ENE	E	E	E	E	E	E	E	E	E	E	E		
25/26	9	8	7	7	7	8	7	8	8	8	9	11	12	12	11	11	11	11	11	11	12	12	12	12	12	12	12	12	12	12	11	10	10	9		
	11	10	9	8	9	10	11	11	12	11	11	14	16	16	15	12	12	13	13	13	13	13	13	13	13	13	13	13	13	13	12	12	12	11		
	NE	ENE	ENE	E	ESE	E	E	E	E	ENE	NE	NE	ENE	ENE	ENE	ENE	ENE	NE	ENE	ENE	ENE	ENE	ENE	E	E	E	E	E	E	E	E	E	E	E		
11/12	10	9	8	8	8	9	9	9	10	9	9	10	12	12	12	11	11	11	11	11	12	12	12	12	12	12	12	12	12	12	11	11	11	11	10	
	11	11	9	9	9	11	11	12	11	11	14	15	15	15	12	12	12	12	13	13	13	14	14	13	13	13	14	14	14	13	13	13	12	12	11	
	NE	ENE	E	E	E	E	E	E	E	ENE	NE	NE	ENE	ENE	ENE	ENE	ENE	NE	ENE	ENE	ENE	ENE	ENE	ENE	E	E	E	E	E	E	E	E	E	E		
1 & 2 Bravo	13	12	11	10	10	11	11	11	11	11	11	12	14	15	14	14	14	14	14	14	14	14	14	13	14	13	14	14	15	15	14	14	14	14	13	
	14	13	12	10	10	11	12	12	12	12	12	13	15	16	15	15	15	15	15	15	15	16	16	15	15	15	15	15	16	16	15	15	15	15	14	
	NE	ENE	E	E	E	E	E	E	ENE	ENE	ENE	ENE	ENE	ENE	ENE	ENE	ENE	NE	ENE	ENE	ENE	ENE	ENE	ENE	E	E	E	E	E	E	E	E	E	E		

NOTE: This is automated data that may/may not agree with the official BAM thinking that's found on the daily slides.  
This data should be used as a guide only

# Houston Pilots: Fri. 11/24/2023

## Forecast Discussion

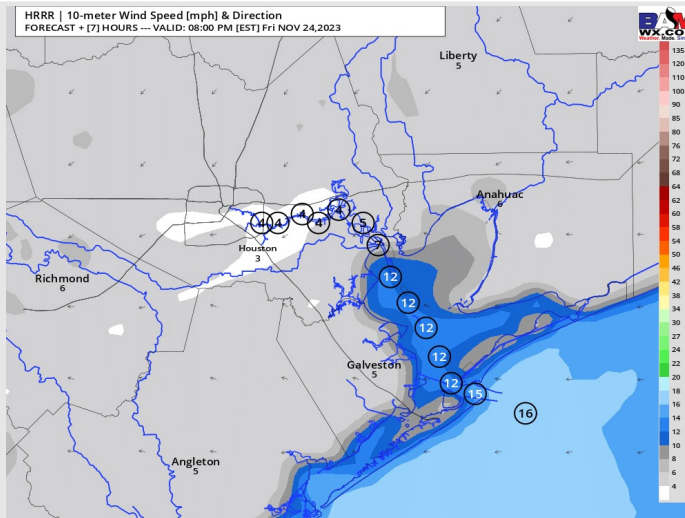
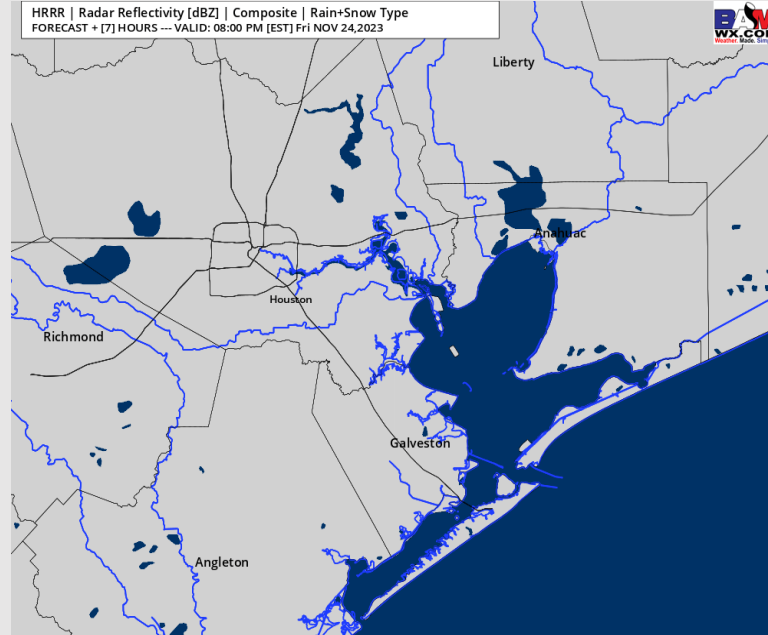
**Precip:** Favoring dry conditions the rest of the day.

**Wind:** Winds will be out of the ENE today. **N of Morgan's Point:** Winds will be at 3-8 kts for the remainder of today. **S of Morgan's Point:** Winds will sit at 9-14 kts for the remainder of the day, with slightly higher winds at 13-18 kts near the Boarding Station. **Gusts of 18 – 22 knots cannot be ruled out after 7 PM S of Morgan's Point.**

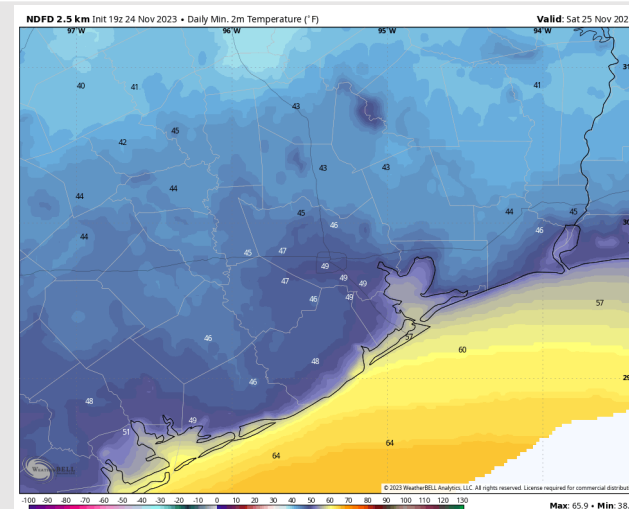
**Low Temps:** **N of Morgan's Point:** Upper 40s F. **S of Morgan's Point:** Upper 50s/Near 60 F.

**Visibility:** No visibility concerns for today.

## Precip Image: 7 PM CT



Wind Speed:  
7 PM CT



Low Temps  
SAT AM



# Houston Pilots: Sat. 11/25/2023

## Forecast Discussion

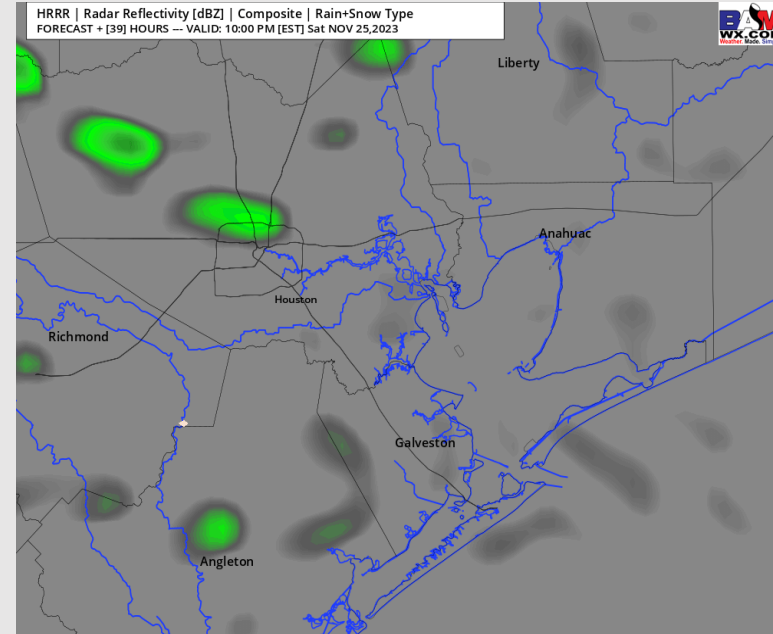
**Precip:** Scattered, light showers will be possible for all stations after 6 – 7 PM CT. Dry conditions favored prior to that.

**Wind:** ENE winds will gradually shift ESE into the afternoon/evening hours of Saturday. **N of Morgan's Point:** Winds will sit at 3 – 8 kts for the entire day. **S of Morgan's Point:** Winds will be 13 – 18 kts through the majority of the day before decreasing to 10-15 kts around 8 PM. **Wind gusts of 17 – 22 kts possible for stations S of Morgan's Point, especially for the Boarding Station.**

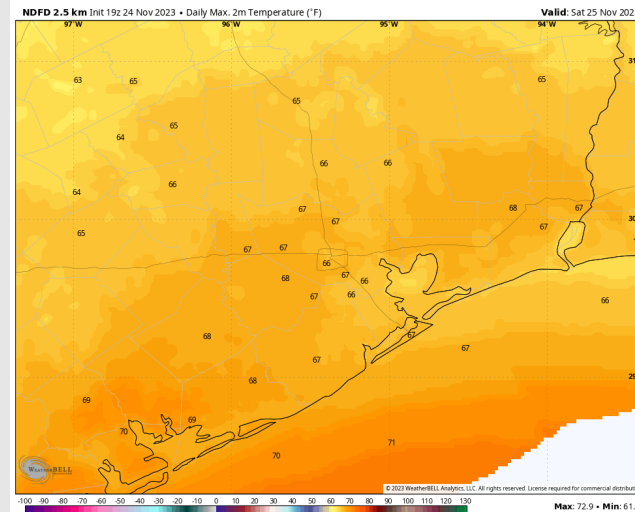
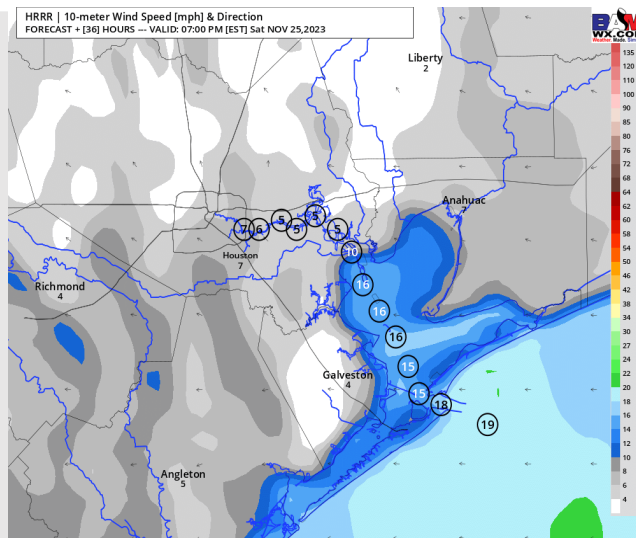
**High Temps:** **N of Morgan's Point:** Mid 60's. **S of Morgan's Point:** Mid 60's F

**Visibility:** No visibility concerns for Saturday.

## Precip Image: 9 PM CT



**Wind Speed:**  
6 PM CT



**High Temps**  
**Saturday**

# Houston Pilots: Sun. 11/26/2023

## Forecast Discussion

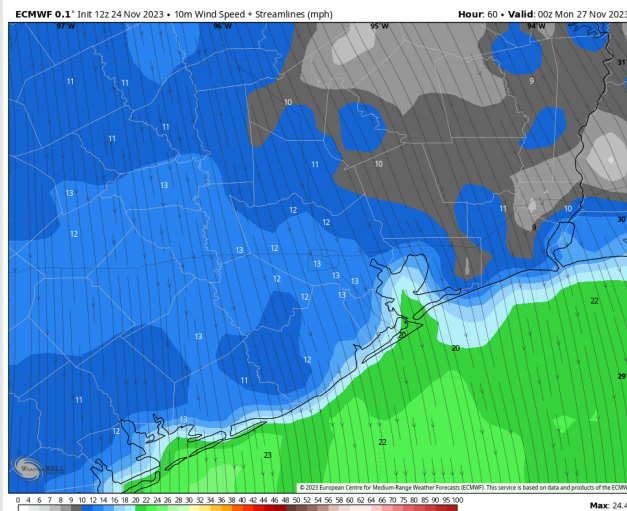
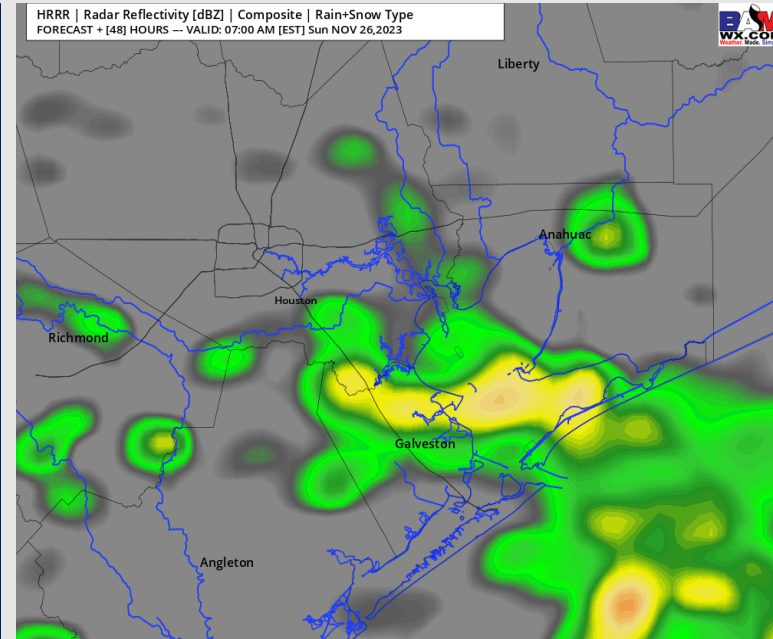
**Precip:** Anticipating scattered showers throughout the morning Sunday with conditions drying up after 10 AM CT and for the rest of the evening.

**Wind:** Winds favored to be out of the ESE as the day begins Sunday, then will gradually shift to be out of the NNW moving into the late AM and through the rest of the day. **N of Morgan's Point:** Winds will begin at 3-8 kts, then increase to 10 – 15 kts by 10 AM and remain there for the day. **S of Morgan's Point:** Winds will begin at 8 – 13 kts and then increase through the late AM to 15 – 20 kts. After 2 PM, winds then increase to 18 – 23 kts. **Gusts near the Boarding Station may at times reach to 30 kts gusts in the later PM.**

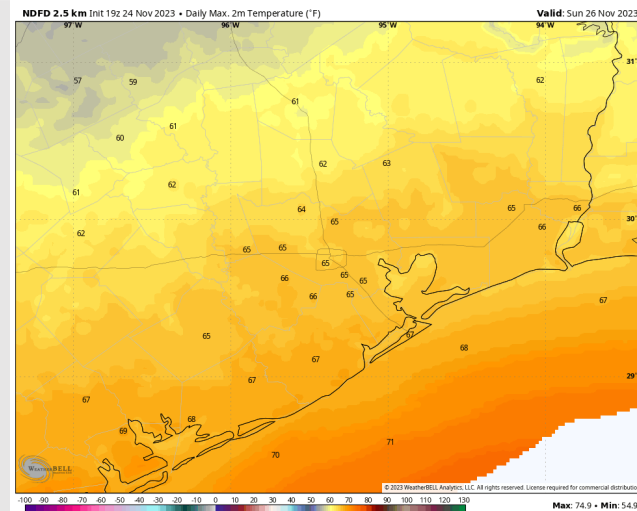
**High Temps:** **N of Morgan's Point:** Mid 60s F **S of Morgan's Point:** Mid to Upper 60s F.

**Visibility:** Not anticipating visibility concerns for Sunday.

## Precip Image: 8 AM CT



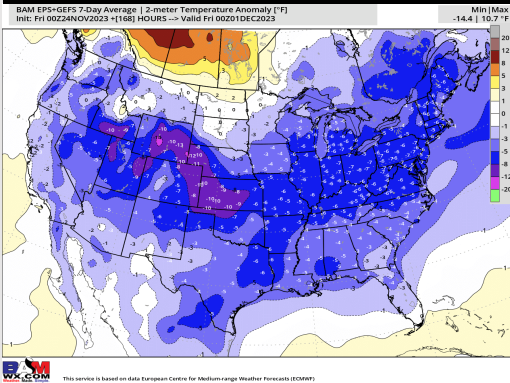
Wind Speed:  
6 PM CT



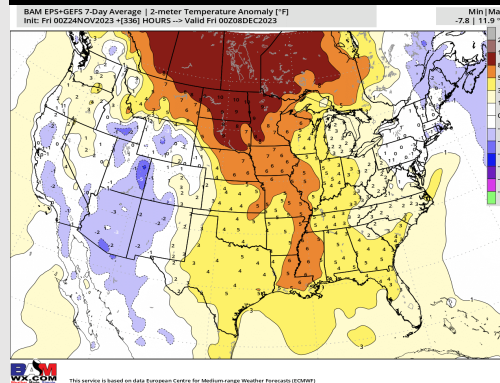
High Temps  
Sunday

# Houston Pilots: 11/24/23

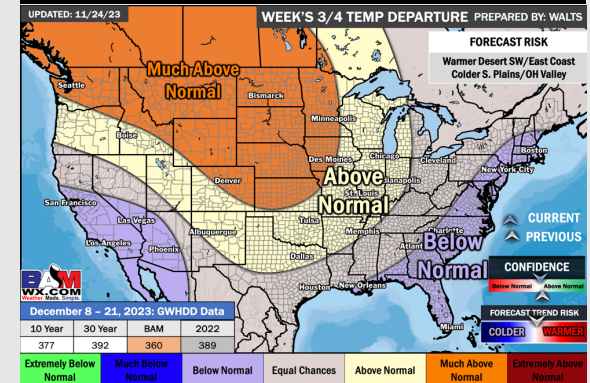
## Next 7 Day Temperature Departure



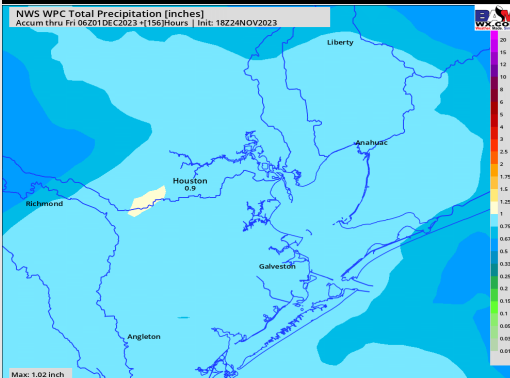
## 8-14 Day Temperature Departure



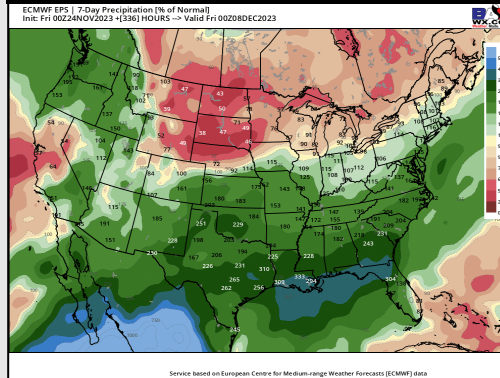
## 15-30 Day Temperature Departure



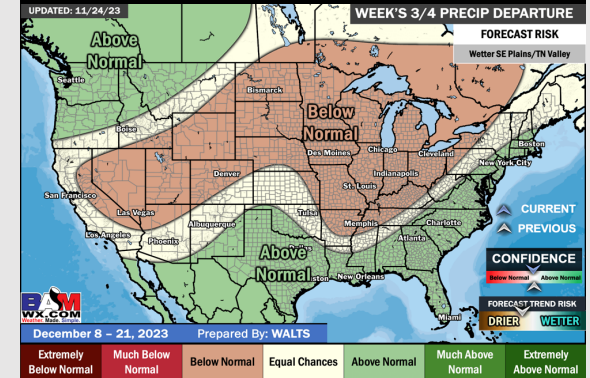
## Next 7 Day Total Precipitation



## 8-14 Day % of Average Precip.



## 15-30 Day % of Average Precip.



- The next best shot of rain pushes in Saturday night into Sunday. Colder than normal weather is expected this week following the last cold front.
- Above normal rainfall and above normal temperatures are expected into the week 2 timeframe.
- Seasonal temperatures and above normal chances for precipitation are favored in the weeks <sup>3</sup>/<sub>4</sub> timeframe.