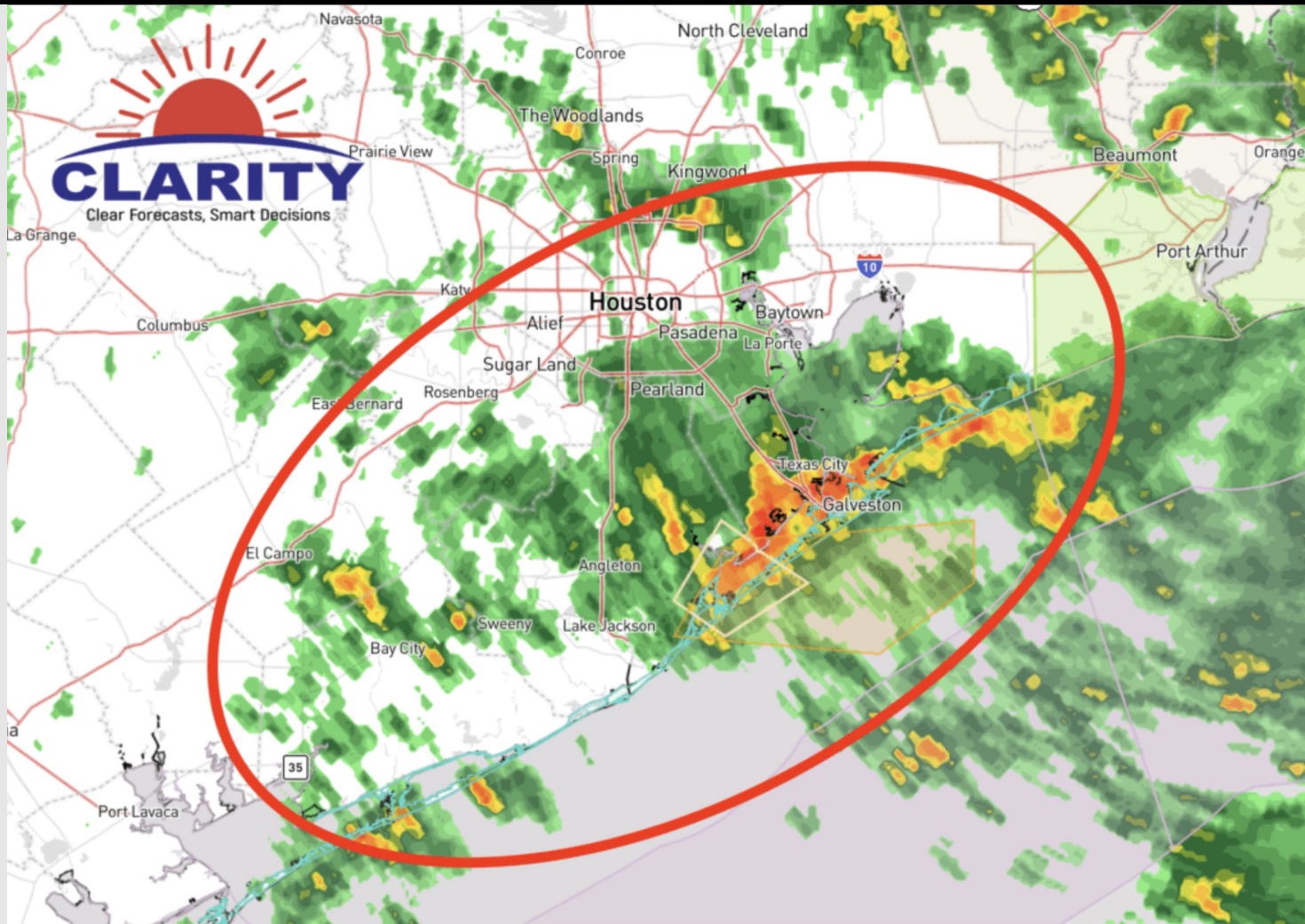


Strong / Severe Storm Update

Live Radar as of 12:30 PM



A tornado watch may be needed over the next 1 – 3 hours

- 40% chance of issuance
- Regardless, stronger storms/ tornadoes will become increasing possible this afternoon
- Wind gusts of 34 knots + will be possible as well

Houston Pilots Forecast Package



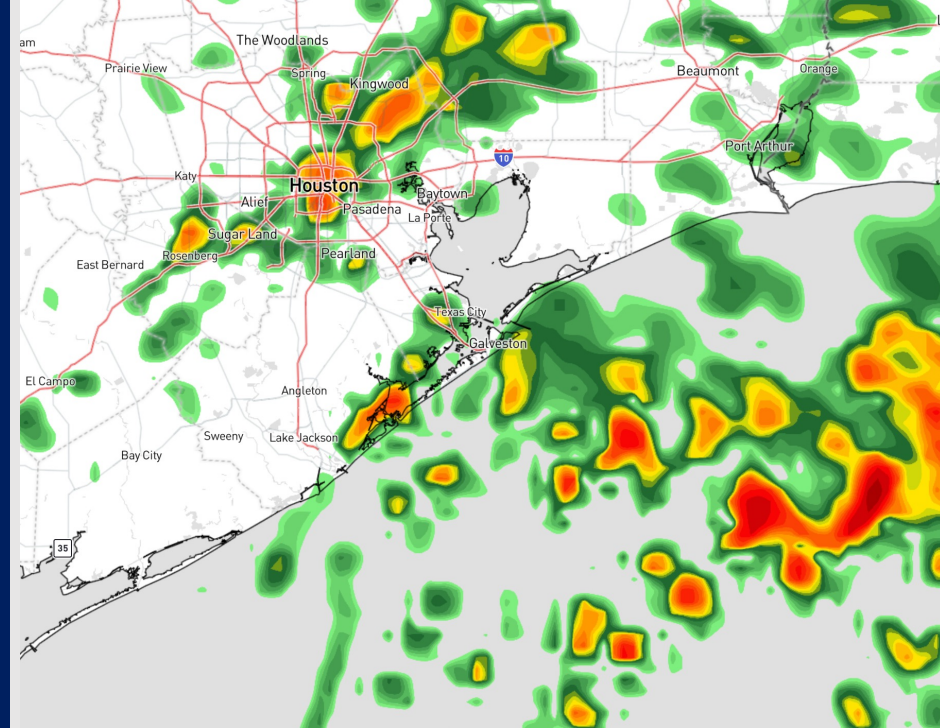
Updated: 4:15 AM CT

Thursday, November 30, 2023

Forecaster: Alyssa Elliott

Weather Headlines

- Scattered showers/storms expected to continue through the day. See special update slide for latest thoughts on when peak storm coverage will be in play this PM.
- Severe weather risks will increase for the 1PM-5PM timeframe. **Gusts of 50 - 60 kts can't be ruled out under the strongest storms, with the Boarding Station being at the greatest risk.**
- **Max wave heights increase for this evening with heights up to 5 - 7' for the Boarding Station**

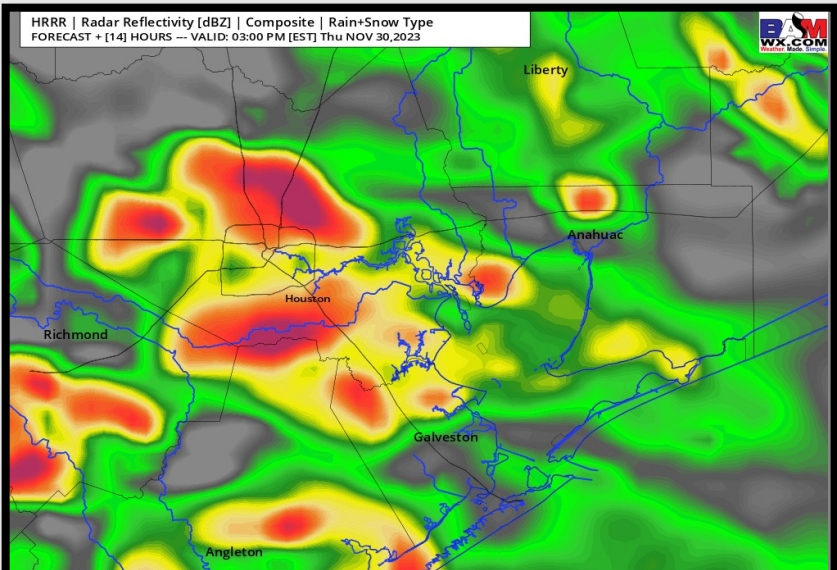


Radar/NWS Alerts: 4:15 AM CT

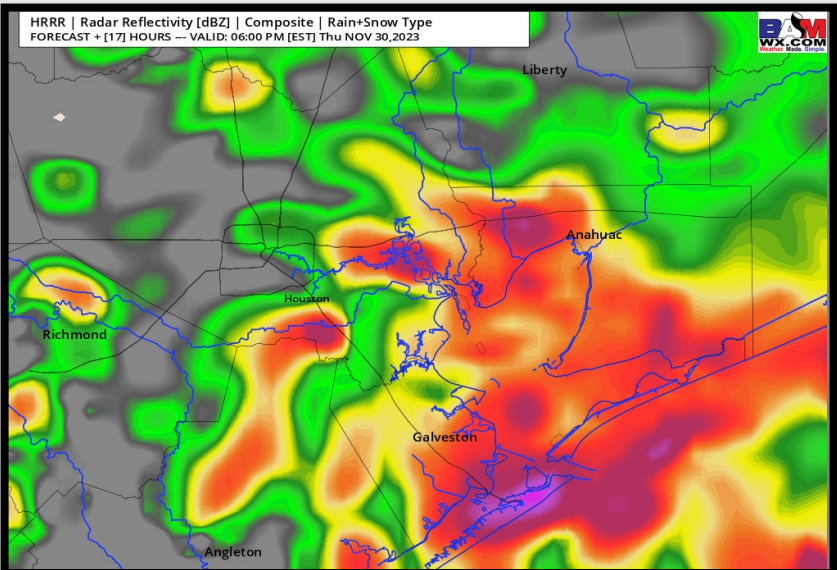


As always, please do not hesitate to reach out to us with any forecast questions via the chat option on the Weather Porthole or our on-call number, **(317)-560-8122** press 1 for forecast questions.

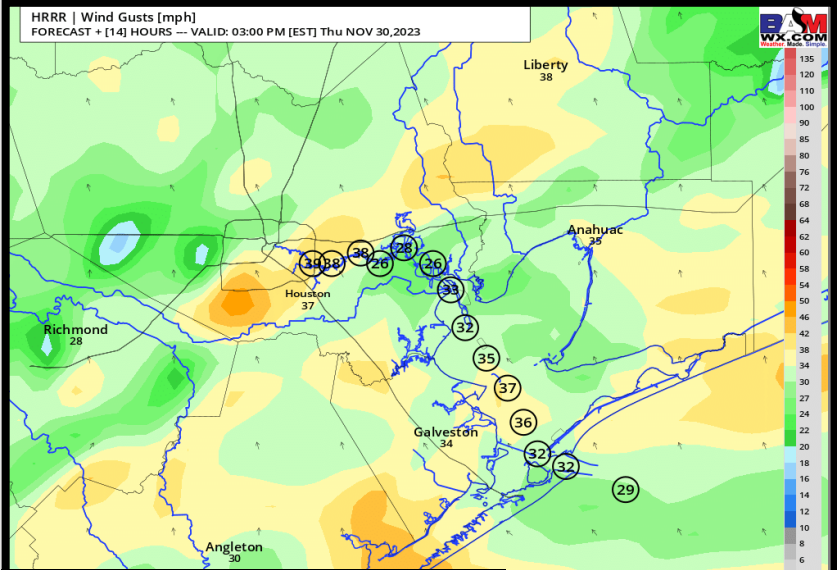
Houston Pilots Special Update



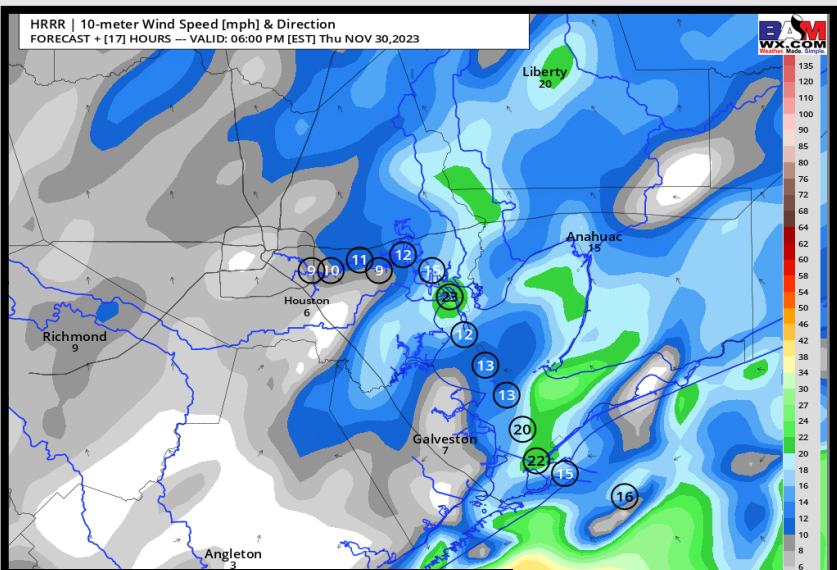
~2PM-CT Simulated Radar *Greater Risk for Severe Weather*



~5PM-CT Simulated Radar *Greater Risk for Severe Weather*



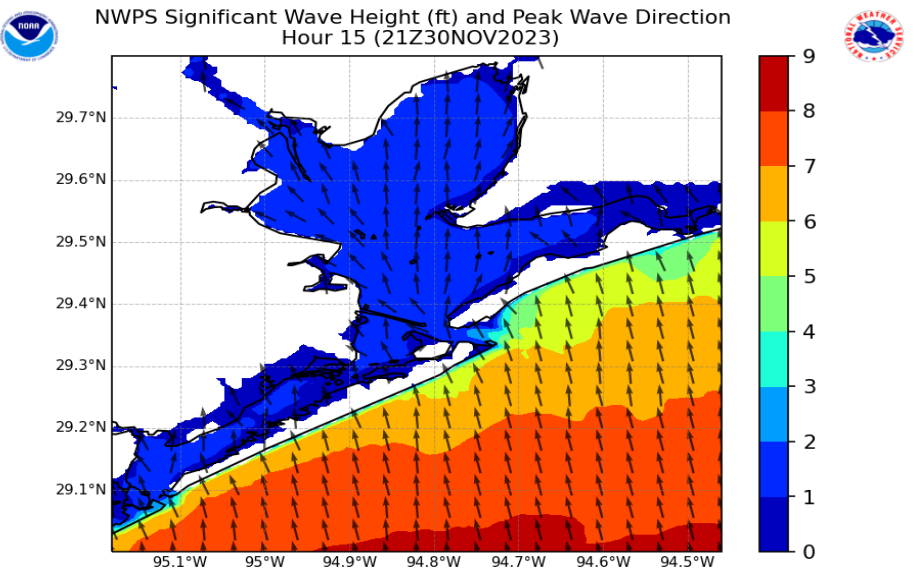
~2PM-CT Wind Gusts



~5PM-CT Wind Speeds

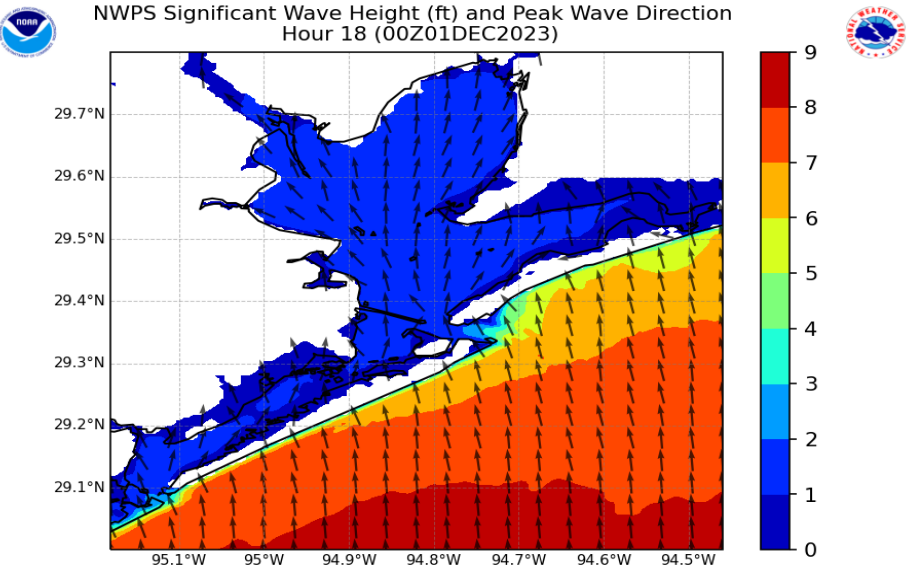
Houston Pilots Wave Height Update

Significant Wave Height Image



3 PM CST Thursday
Afternoon

The top image shows wave heights around 3 PM CST for this afternoon. Wave heights will slightly increase throughout the afternoon, with best potential for Boarding Station to see locally 5 – 7' max wave height between 3PM – 9 PM.



6 PM CST Thursday
Evening

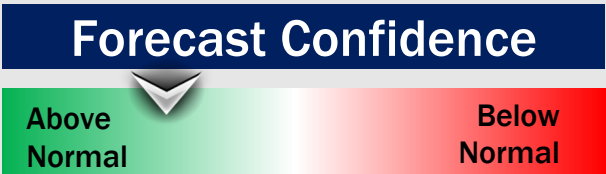
Heights are not expected to exceed 3 feet for any other station S of Morgan's Point aside from 11/12 with 3 – 5' and the Boarding Station. Max wave heights will gradually die down after 9PM.

Houston Pilots Extended Range Visibility Report



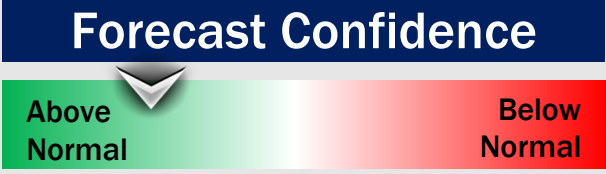
Sunday 12/3/23

No fog concerns for Sunday.



Monday 12/4/23

No fog concerns for Monday.



Tuesday 12/5/23

No fog concerns for Tuesday.



Chance for Fog

Sunday AM	Unlikely
Sunday PM	Unlikely
Monday AM	Unlikely
Monday PM	Unlikely
Tuesday AM	Unlikely
Tuesday PM	Unlikely

Houston Pilots Visibility Chart (miles)



Time	Forecast Confidence																																					
	Thu 2am	Thu 3am	Thu 4am	Thu 5am	Thu 6am	Thu 7am	Thu 8am	Thu 9am	Thu 10am	Thu 11am	Thu 12pm	Thu 1pm	Thu 2pm	Thu 3pm	Thu 4pm	Thu 5pm	Thu 6pm	Thu 7pm	Thu 8pm	Thu 9pm	Thu 10pm	Thu 11pm	Fri 12am	Fri 1am	Fri 2am	Fri 3am	Fri 4am	Fri 5am	Fri 6am	Fri 7am	Fri 8am	Fri 9am	Fri 10am	Fri 11am	Fri 12pm	Fri 1pm		
610 Bridge	10	10	10	9	7	5	3	2	3	2	2	2	1	1	2	2	2	2	2	3	3	3	3	2	0.81	0.48	0.48	0.48	0.48	0.48	0.28	2	2	3	5	6		
Kinder 1	10	10	10	9	7	5	3	2	3	2	2	2	1	1	2	2	2	2	3	4	4	3	5	3	2	2	2	2	2	2	2	3	3	5	6			
Greens Bayou	10	10	10	9	6	5	3	2	3	2	2	2	1	2	2	2	2	2	5	5	5	5	6	5	5	4	4	4	3	4	3	2	3	4	4	5		
Shell Crude	10	10	10	9	6	5	3	2	3	2	2	2	1	2	2	2	2	3	7	7	7	7	8	7	7	8	8	6	3	5	4	2	3	4	4	5		
Lynchburg Ferries	10	10	10	9	6	5	3	2	3	2	2	2	1	2	2	2	2	3	7	7	7	7	8	7	7	8	8	6	4	5	4	2	3	4	4	5		
Exxon 3	10	10	10	9	7	5	2	2	3	2	2	2	1	2	2	2	2	3	7	7	7	7	8	7	7	8	8	6	4	5	4	2	3	4	4	5		
Morgans Point	10	10	10	9	9	5	3	3	3	2	2	2	2	2	1	1	1	4	7	7	7	7	8	7	7	8	8	6	5	5	4	2	3	4	4	5		
75/76	10	10	10	9	8	6	4	3	3	3	2	2	2	2	2	1	1	4	7	7	7	7	8	7	7	8	8	6	5	5	4	2	3	4	5	5		
63/64	10	10	10	10	8	7	5	3	3	3	2	2	2	2	2	2	2	4	7	7	7	7	8	7	7	8	8	6	4	5	4	3	4	4	5	5		
51/52	10	10	10	10	7	7	6	3	3	3	2	2	2	3	2	3	3	4	7	7	7	7	7	7	7	7	7	5	4	5	2	3	4	4	5	5		
37/38	10	10	10	10	9	7	7	3	3	3	3	3	2	3	3	3	3	4	6	7	7	7	7	6	6	4	6	4	4	4	4	4	2	3	4	5	5	5
25/26	10	10	10	10	10	7	7	4	3	3	3	3	2	3	3	3	5	4	5	7	7	7	7	6	7	4	4	4	5	5	5	2	3	4	5	5	5	
11/12	10	10	10	10	10	7	9	4	4	3	3	3	2	3	3	3	6	4	4	7	7	5	6	6	4	4	4	4	4	4	4	2	3	4	5	5	5	
1 & 2 Bravo	10	10	10	10	10	10	10	5	4	3	3	3	2	3	3	3	6	3	3	5	5	4	5	5	4	3	3	3	3	3	2	1	3	3	4	4	4	

NOTE: This is automated data that may/may not agree with the official BAM thinking that's found on the daily slides or special visibility report slides. This data should be used as a guide only

Houston Pilots Wind Chart



Forecast Confidence



Example

Sustained wind 13 Knots
Gusts 18 Knots
Wind from the N

WS: 13
G:18
N

Time Knots	Thu 2am	Thu 3am	Thu 4am	Thu 5am	Thu 6am	Thu 7am	Thu 8am	Thu 9am	Thu 10am	Thu 11am	Thu 12pm	Thu 1pm	Thu 2pm	Thu 3pm	Thu 4pm	Thu 5pm	Thu 6pm	Thu 7pm	Thu 8pm	Thu 9pm	Thu 10pm	Thu 11pm	Fri 12am	Fri 1am	Fri 2am	Fri 3am	Fri 4am	Fri 5am	Fri 6am	Fri 7am	Fri 8am	Fri 9am	Fri 10am	Fri 11am	Fri 12pm	Fri 1pm		
610 Bridge	6	5	7	7	8	9	8	6	6	7	7	9	8	11	10	15	16	16	15	15	13	11	10	9	6	6	4	4	3	2	3	3	4	4	5	5	6	7
	16	14	19	19	18	20	17	14	16	18	20	20	19	26	26	23	24	24	23	23	20	17	15	13	9	9	7	6	4	4	4	4	5	5	6	6	7	
	ESE	ESE	ESE	ESE	ESE	ESE	ESE	SSE	SSE	SSE	SSE	SSE	SSE	SSE	SSE	S	SSW	SSW	SSW	SSW	SW	SW	SW	SW	WSW	WSW	WSW	WSW	W	WNW	NNW	NNW	NE	NNE	NNE	NE		
Kinder 1	5	5	7	8	8	9	8	7	6	7	6	9	8	10	10	15	16	16	15	15	13	11	10	9	6	6	4	4	3	3	3	3	3	3	4	4	5	
	14	13	18	20	18	19	17	15	17	19	19	20	19	26	26	22	24	24	23	22	20	17	15	13	10	9	7	6	4	4	4	5	5	6	6	7		
	ESE	ESE	ESE	ESE	ESE	ESE	ESE	SSE	SSE	SSE	SSE	SSE	SSE	SSE	SSE	S	SSW	SSW	SSW	SSW	SW	SW	SW	SW	WSW	WSW	WSW	WSW	W	WNW	NNW	NNW	NE	NNE	NNE	NE		
Greens Bayou	5	5	6	9	6	8	8	8	6	7	6	9	8	11	11	15	15	16	15	15	13	11	10	8	6	6	4	4	3	3	3	4	3	4	4	5		
	12	12	16	21	18	18	17	16	16	20	18	21	20	25	27	22	23	24	23	23	20	17	15	13	10	8	7	5	4	4	4	5	5	6	6	7		
	ESE	ESE	ESE	ESE	ESE	ESE	SE	SSE	SSE	SSE	S	SSE	SSE	SSE	SSE	S	SSW	SSW	SSW	SSW	SW	SW	SW	SW	WSW	WSW	WSW	WSW	W	WNW	NNW	NNW	E	ENE	NNE	NE		
Shell Crude	5	5	7	10	7	7	8	7	6	8	7	10	8	11	11	14	15	16	15	15	13	11	10	8	7	6	5	4	3	3	3	4	3	4	4	5		
	12	12	16	22	19	17	17	15	17	21	19	21	21	26	27	22	23	24	23	23	20	17	15	13	10	9	7	6	5	4	5	5	5	6	7	8		
	ESE	ESE	ESE	ESE	ESE	ESE	ESE	SE	SSE	SSE	S	SSE	SSE	SSE	SSE	S	SSW	SSW	SSW	SSW	SW	SW	SW	SW	WSW	WSW	WSW	WSW	W	WNW	NW	E	ENE	NNE	NE			
Lynchburg Ferries	6	6	7	9	6	7	9	9	8	9	8	11	9	13	12	14	15	15	15	15	13	11	10	8	7	6	5	4	3	3	3	3	3	4	4	5		
	12	13	15	22	18	18	18	18	19	22	21	23	22	27	28	21	22	23	23	23	19	17	14	12	10	9	7	6	5	4	5	5	6	7	8			
	ESE	ESE	ESE	ESE	ESE	E	ESE	SE	SSE	SSE	SSE	SSE	SSE	SSE	SSE	S	SSW	SSW	SSW	SSW	SW	SW	SW	SW	WSW	WSW	WSW	WSW	W	WNW	NW	SW	ENE	NNE	NE			
Exxon 3	5	6	7	9	7	7	9	9	8	10	12	11	11	12	12	14	15	15	15	15	13	11	10	9	7	6	5	4	3	3	3	3	4	4	5			
	13	13	17	21	19	19	17	17	21	23	25	24	25	27	27	20	22	23	22	22	19	17	14	12	11	9	8	6	5	5	5	5	6	7	8			
	ESE	ESE	ESE	ESE	ESE	E	ESE	SE	SSE	SSE	SSE	SSE	SSE	SSE	SSE	S	SSW	SSW	SSW	SSW	SW	SW	SW	SW	WSW	WSW	WSW	WSW	W	W	SSW	SW	E	NNE	NE			
Morgans Point	7	7	9	9	8	8	8	9	8	10	12	12	11	11	11	15	15	15	15	14	13	12	10	9	8	7	6	5	4	4	4	4	3	4	5	6		
	14	14	18	20	19	17	14	16	21	23	26	24	24	27	27	21	21	21	21	20	18	16	14	12	11	9	8	7	6	5	5	5	5	6	7	9		
	E	ESE	ESE	ESE	ESE	E	E	SE	SSE	SSE	SSE	SSE	SSE	SSE	SSE	SSE	S	SSW	SSW	SSW	SSW	SW	SW	SW	WSW	WSW	WSW	W	W	ESE	SSE	SSE	ENE	ENE	NE			
75/76	10	9	12	11	11	11	12	9	8	11	11	13	11	13	13	16	16	15	15	14	14	13	11	10	9	7	6	5	4	4	4	4	4	5	5	6		
	15	16	20	19	19	20	18	13	21	22	25	24	23	27	27	22	22	21	20	18	17	16	14	12	11	9	7	6	5	5	5	6	6	7	8	10		
	E	ESE	ESE	ESE	ESE	E	ESE	ESE	SSE	SSE	SSE	SE	SSE	SSE	SSE	S	SSW	SSW	SSW	SSW	SW	SW	SW	SW	WSW	WSW	WSW	W	W	NE	ESE	SSE	ENE	ENE	ENE			
63/64	10	10	13	11	14	13	13	5	10	10	13	12	12	14	14	17	18	16	14	14	14	13	12	10	9	7	6	5	4	4	4	4	4	5	6	6		
	16	17	19	17	21	21	19	10	22	21	26	22	24	25	27	23	23	21	18	18	17	16	14	12	10	8	7	5	5	5	5	6	7	9	10			
	ESE	ESE	ESE	E	ESE	ESE	SE	ESE	SSE	SSE	SSE	SSE	SSE	SSE	SE	S	S	SSW	SSW	SSW	SSW	SW	SW	SW	WSW	WSW	WSW	WSW	W	W	NE	SE	ENE	ENE	ENE			
51/52	10	11	12	10	13	11	7	7	13	8	16	11	12	13	14	17	18	16	14	13	13	13	11	10	8	7	5	4	3	4	4	4	4	5	5	6		
	15	18	18	16	19	16	12	14	22	19	26	20	24	24	27	24	24	21	18	17	17	16	14	12	9	8	7	5	4	5	5	5	6	7	8	9		
	ESE	ESE	ESE	E	E	E	SSE	SSE	SSE	SE	SSE	SE	SSE	SE	SE	S	S	SSW	SSW	SSW	SSW	SW	SW	SW	WSW	WSW	WSW	WSW	W	WNW	S	SSE	ESE	ENE	ENE			
37/38	9	10	10	11	9	11	9	11	13	12	15	12	10	13	15	17	17	16	15	13	12	12	11	9	8	6	5	4	3	3	4	4	4	5	5	6		
	14	17	16	17	16	14	17	18	23	21	24	22	22	24	28	25	25	22	19	18	17	16	15	12	9	8	7	5	4	5	6	6	7	7	8	9		
	ESE	ESE	ESE	ESE	E	ESE	SSW	SSE	SSE	SSE	SSE	SE	SSE	SSE	SE	S	S	SSW	SSW	SSW	SSW	SW	SW	SW	SW	WSW	WSW	WSW	WSW	WSW	WNW	WSW	SW	ENE	NE	ENE		
25/26	8	9	9	12	10	10	16	12	14	13	15	14	10	13	16	17	16	16	14	13	12	11	11	9	7	6	5	4	3	4	5	5	5	5	6			
	14	16	15	19	18	13	24	19	23	20	22	24	21	22	28	26	24	23	20	19	18	16	15	12	10	9	7	6	5	6	7	7	7	7	8			
	ESE	ESE	ESE	ESE	E	SE	SE	SSE	SSE	SSE	SSE	SE	SSE	SSE	SSE	S	S	S	S	SSW	SSW	SSW	SSW	SW	WSW	WSW	WSW	SW	WSW	W	SW	SW	E	ENE	ENE			
11/12	9	10	10	14	15	8	20	13	15	13	15	15	14	15	17	18	16	16	14	14	12	12	11	10	8	7	6	5	4	5	5	5	5	6	6			
	15	17	16	19	21	13	26	19	22	20	21	24	22	23	28	27	24	23	21	20	18	17	16	13	11	9	8	6	5	7	7	7	7	7	8	8		
	ESE	ESE	ESE	ESE	E	SE	SE	SSE	SSE	SSE	SE	SE	SSE	SSE	SSE	S	S	S	S	SSW	SSW	SSW	SSW	SW	WSW	WSW	SW	SW	SW	SW	SE	ENE	E	ENE	ENE			
1 & 2 Bravo	9	14	12	11	13	14	20	15	17	18	15	17	18	18	22	21	18	18	17	16	14	13	12	10	9	7	7	5	5	6	5	6	5	6	6			
	16	19	18	14	17	22	26	21	22	25	21	24	24	25	31	30	26	25	24	22	18	19	17	15	12	10	8	7	6	7	7	8	9	8	9			
	ESE	ESE	ESE	E	ENE	SSE	SE	SE	SSE	SSE	SSE	SSE	SE	SSE	SSE	S	S	S	S	S	SSW	SSW	SSW	SW	WSW	WSW	SW	WSW	SW	SSW	WSW	E	SE	ENE	ENE			

NOTE: This is automated data that may/may not agree with the official BAM thinking that's found on the daily slides. This data should be used as a guide only. Wind gusts underdone, especially near the Boarding Station.

Houston Pilots: Thu. 11/30/2023



Forecast Discussion

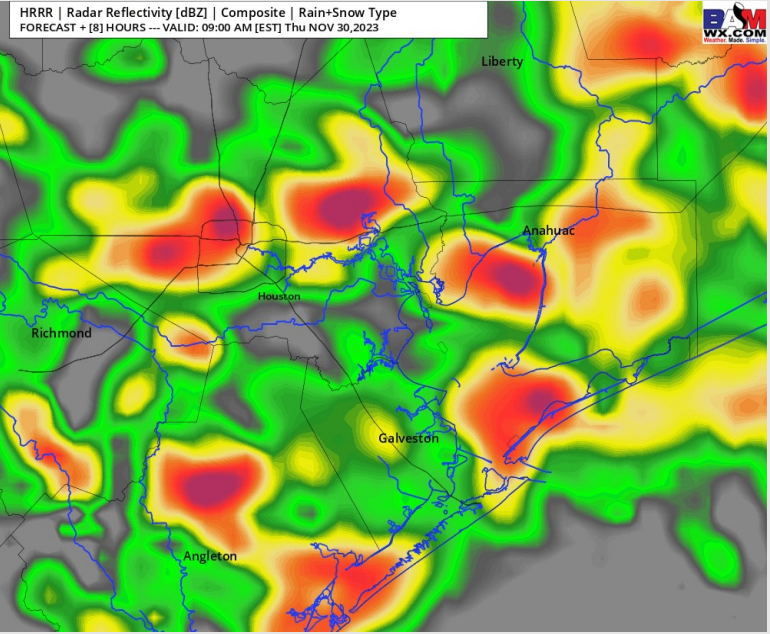
Precip: Scattered showers and thunderstorms will continue to gradually increase in coverage before becoming widespread moderate/heavy (~60%) after 8AM-CT and continue through 7 PM-CT. The heaviest downpours will set up over the Boarding Station. After 7 PM, 30% chances continue through the rest of the evening. **Monitoring a severe risk with gusty winds in the very early PM, where the strongest storms can hold a few gusts of 50-60 kts (especially near the Boarding Station). Low end risk for iso hail and tornadoes.**

Wind: Winds will be out of the SE/SSE for the majority of today before shifting to out of the S/SW by 9 PM. **N of Morgan's Point:** Sustained at 7-12 kts through 9 AM before increasing to 15-20 kts the rest of the day. **S of Morgan's Point:** Winds will start at 15-20 kts before increasing to 20-25 kts by 6 AM. Then around 12 PM, winds will increase again to 23 - 27 kts through 9 PM before decreasing to 18-23 kts. **Wind gusts of 20 - 30 kts possible for all stations through the AM. 35-45 kts gusts will be possible after 11 AM (independent of strong storms)**

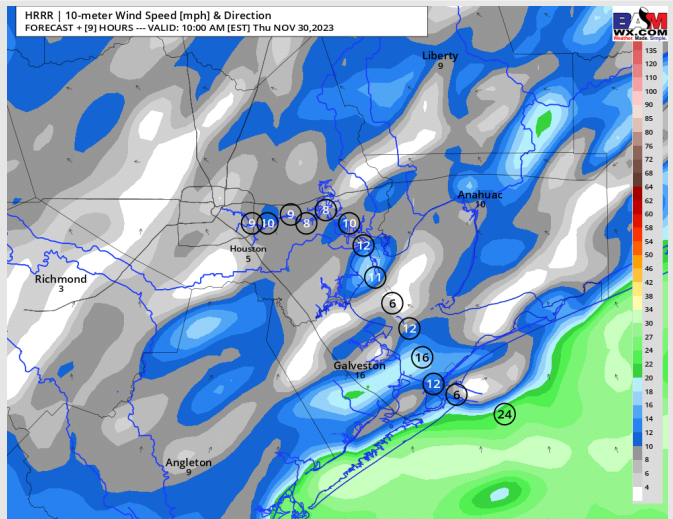
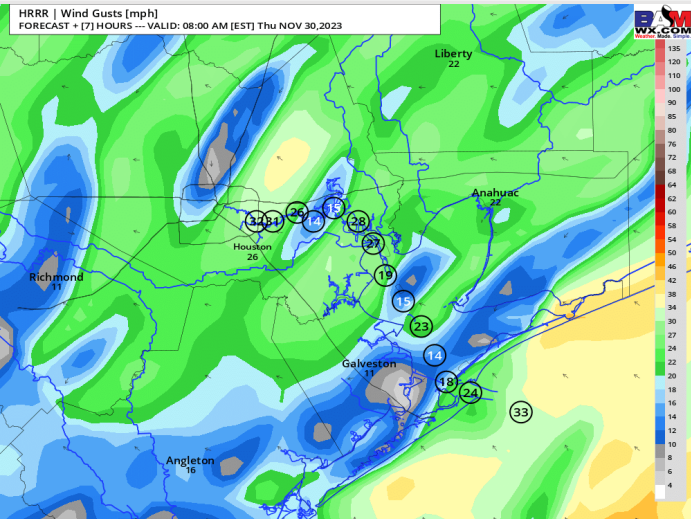
High Temps: **N of Morgan's Point:** Low 70s F. **S of Morgan's Point:** Near 70 F.

Visibility: No fog concerns, however areas of reduced visibility possible today under heavier downpours.

Precip Image: 8 AM CT



**Wind Gusts:
7 AM CT**



**Wind Speed:
9 AM-CT**

Houston Pilots: Fri. 12/01/2023



Forecast Discussion

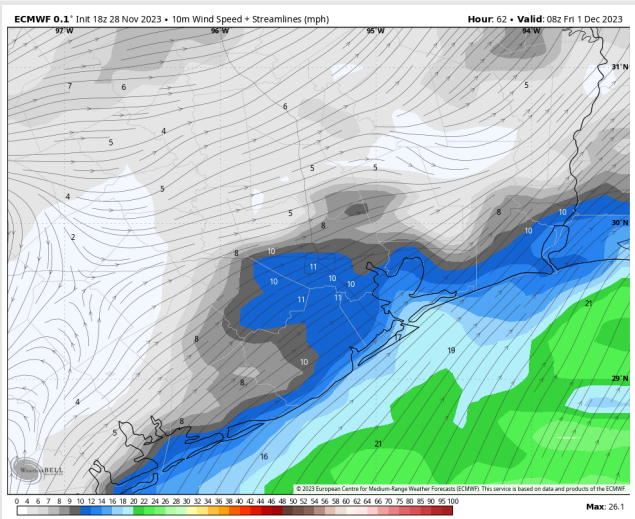
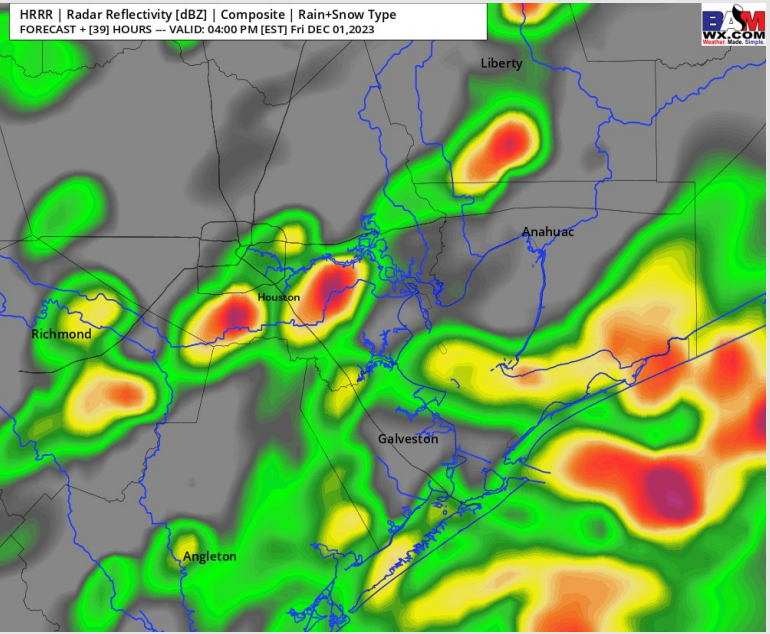
Precip: Showers / iso storms (30 – 40%) will continue throughout the morning and increasing in coverage from 12 - 6PM (60%). Favoring rain to taper off, becoming isolated (20-30%) with showers between 6 PM - 12 AM CT.

Wind: Winds will start out of the NW before slowly shifting to the be out of the NE by the end of the day. **N of Morgan's Point:** Winds will briefly be 7 – 12 kts through 3 AM before decreasing to 3-8 kts for the remainder of the day. **S of Morgan's Point:** Winds will be 12 – 17 kts through 5 AM before decreasing to 4-9kts for the rest of the day. Gusts of 20-25 kts embedded in storms cannot be ruled out.

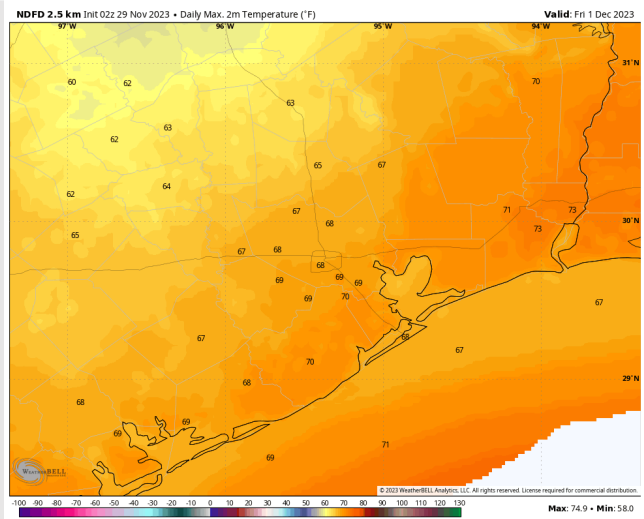
High Temps: **N of Morgan's Point:** High 60's F. **S of Morgan's Point:** Mid to Upper 60's F

Visibility: No visibility concerns for Friday.

Precip Image: 3 PM CT



Wind Speed:
2 AM CT



High Temps
Friday

Houston Pilots: sat. 12/02/2023



Forecast Discussion

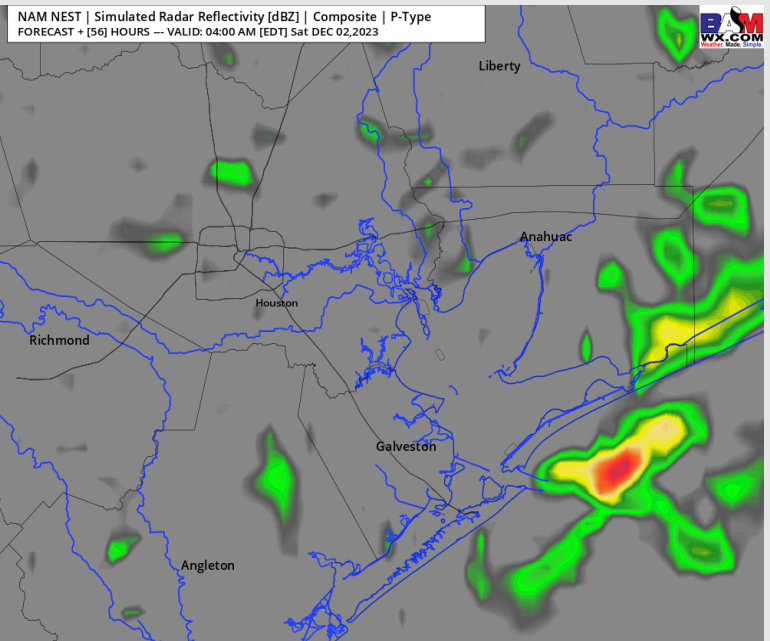
Precip: Dry conditions are favored throughout the day, aside from drizzle chances (10%) through 4AM-CT.

Wind: Winds out of the NE through most of Saturday. **N of Morgan's Point:** Winds at 3 - 6 kts for all of Saturday. **S of Morgan's Point:** winds will be 10 - 15 kts through the entirety of the day.

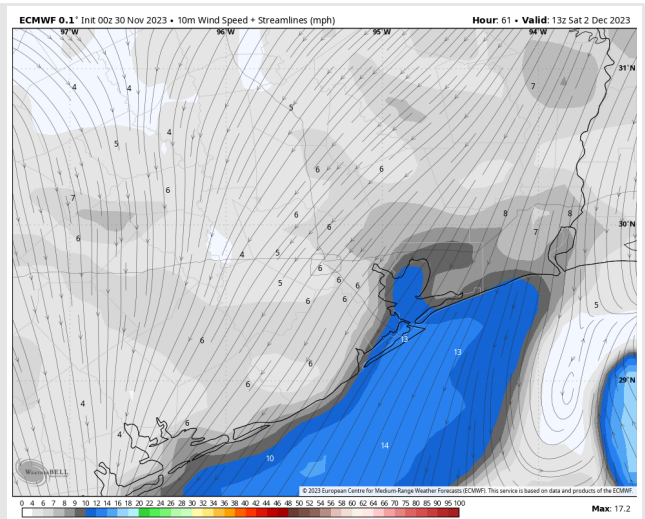
High Temps: **N of Morgan's Point:** Lower 70's F **S of Morgan's Point:** Mid 60s F.

Visibility: Not anticipating visibility concerns for Saturday morning given slightly elevated winds.

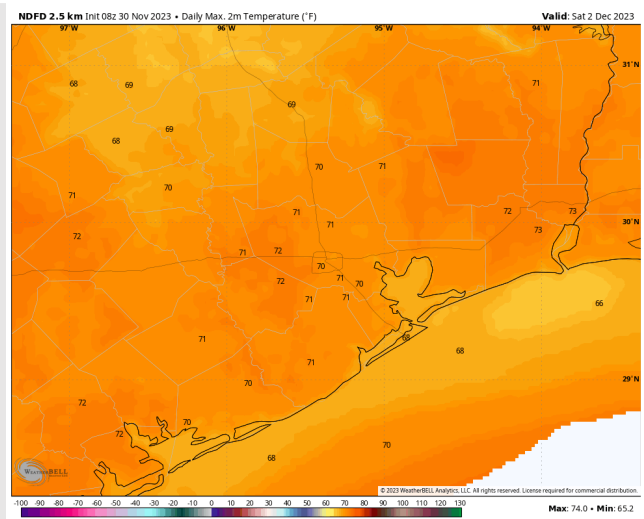
Precip Image: 3 AM CT



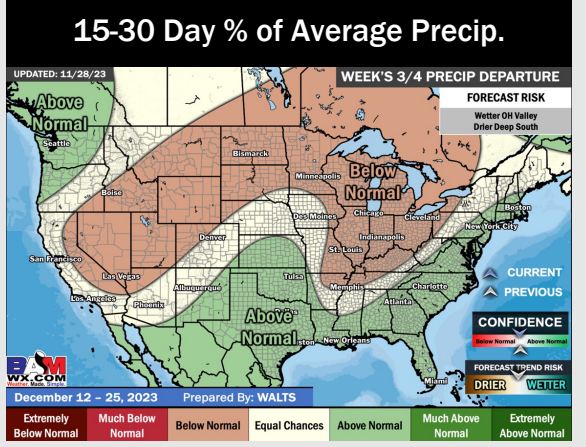
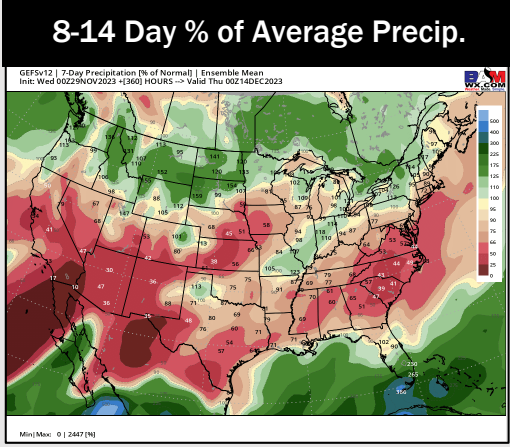
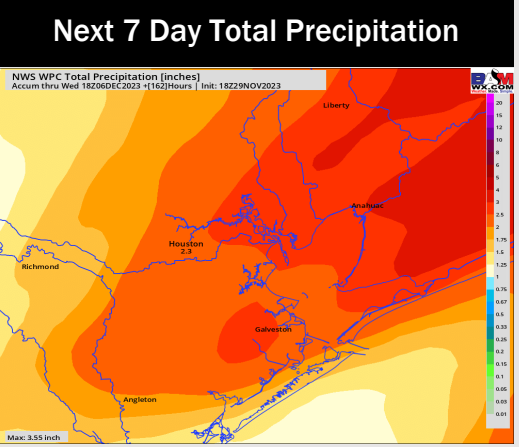
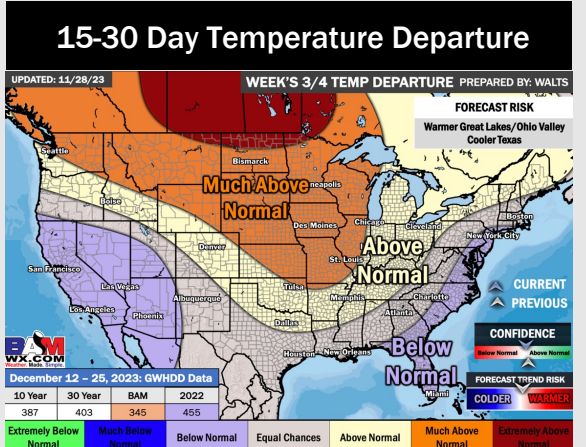
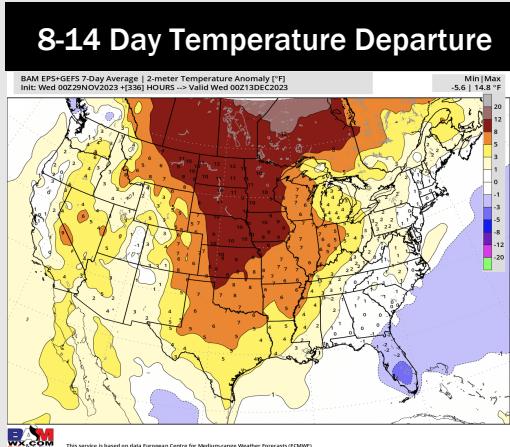
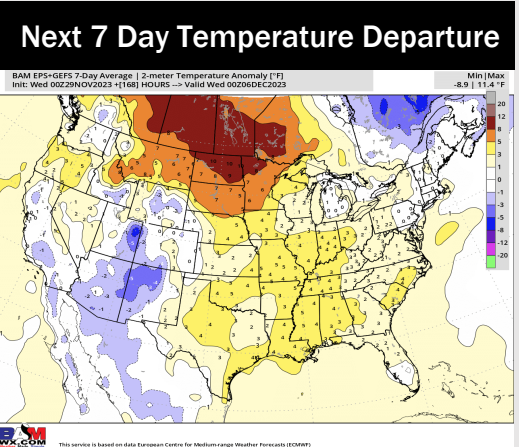
Wind Speed:
8 AM CT



High Temps
Saturday



Houston Pilots: 11/30/23



- Heavy rain chances exist throughout the day today and exit tomorrow. An active weekend with rain chances look to persist. Warmer than normal weather is expected this week following the last cold front.
- Below normal rainfall and above normal temperatures are expected into the week 2 timeframe.
- Seasonal temperatures and above normal chances for precipitation are favored in the weeks 3/4 timeframe.