

Houston Pilots Forecast Package



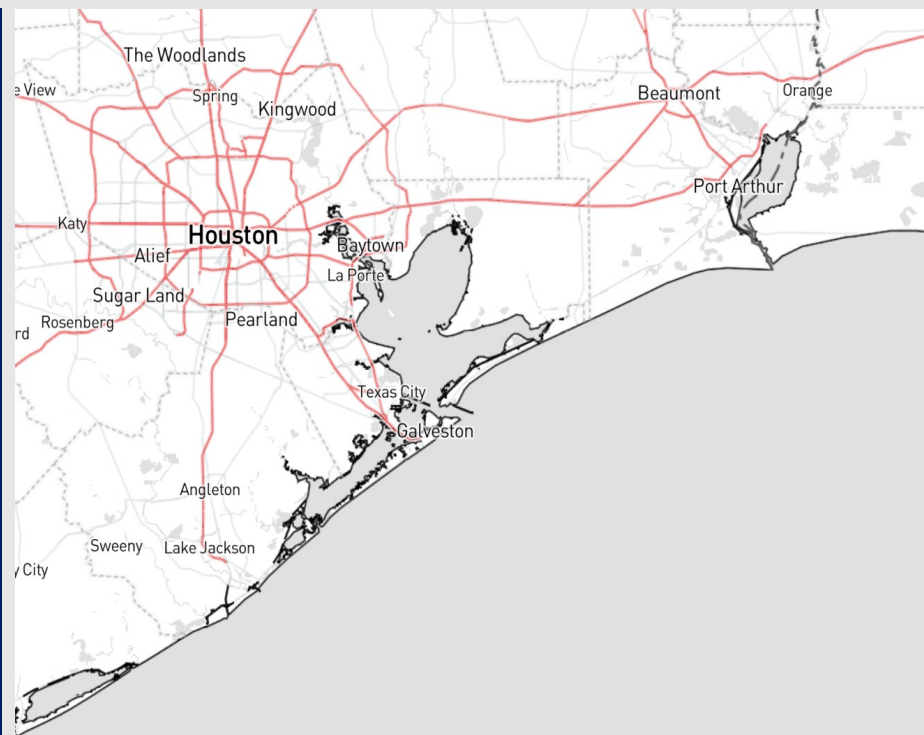
Updated: 3:15 PM CT

Friday, November 17, 2023

Forecaster: Jonathan Kipper

Weather Headlines

- Mostly dry conditions are anticipated through SUN PM.
- Winds will be on the calmer side over the new few days. Gusts early Sat AM may reach ~22 kts, calming for the late AM.
- Keeping an eye on patchy fog/low clouds for late FRI PM/SAT AM. More details on slides below.



Radar/NWS Alerts: 3:15 PM CT



As always, please do not hesitate to reach out to us with any forecast questions via the chat option on the Weather Porthole or our on-call number, **(317)-560-8122** press 1 for forecast questions.

The image contains two logos. On the left is the logo for BAM WX.COM, featuring the letters 'BAM' in a stylized font with a white 'A' and a black and white swirl, followed by 'WX.COM' in black and 'Weather. Made. Simple.' in blue and red. On the right is the logo for Houston Pilots, featuring a large red 'H' with the text 'Houston Pilots' in white.

Confidence



LOW

- **Reduced visibilities with patchy fog/low clouds will be possible S of Morgan's Point beginning at 11 PM CT tonight and lasting through 3 AM CT SAT.**
- **Visibilities of 2-4 miles can't be ruled out, but greatest risk for fog will likely remain to the east of stations.**
- **As wind speeds increase SAT AM, potential for reduced visibilities taper off quickly and not anticipating additional threats the rest of SAT AM.**

Houston Pilots Extended Range Visibility Report



Monday 11/20/23

No visibility concerns Monday.

Forecast Confidence



Wednesday 11/22/23

No visibility concerns Wednesday.

Forecast Confidence



Tuesday 11/21/23

No visibility concerns Tuesday.

Forecast Confidence



Chance for Fog

Monday AM	Unlikely
Monday PM	Unlikely
Tuesday AM	Unlikely
Tuesday PM	Unlikely
Wednesday AM	Unlikely
Wednesday PM	Unlikely

Houston Pilots Visibility Chart (miles)



Time	Fri 2pm	Fri 3pm	Fri 4pm	Fri 5pm	Fri 6pm	Fri 7pm	Fri 8pm	Fri 9pm	Fri 10pm	Fri 11pm	Sat 12am	Sat 1am	Sat 2am	Sat 3am	Sat 4am	Sat 5am	Sat 6am	Sat 7am	Sat 8am	Sat 9am	Sat 10am	Sat 11am	Sat 12pm	Sat 1pm	Sat 2pm	Sat 3pm	Sat 4pm	Sat 5pm	Sat 6pm	Sat 7pm	Sat 8pm	Sat 9pm	Sat 10pm	Sat 11pm	Sun 12am	Sun 1am	
610 Bridge	10	10	10	10	10	10	10	10	10	10	10	10	10	10	10	10	10	10	10	10	10	10	10	10	10	10	10	10	10	10	10	10	10	10	10	10	
Kinder 1	10	10	10	10	10	10	10	10	10	10	10	10	10	10	10	10	10	10	10	10	10	10	10	10	10	10	10	10	10	10	10	10	10	10	10	10	
Greens Bayou	10	10	10	10	10	10	10	10	10	10	10	10	10	10	10	10	10	10	10	10	10	10	10	10	10	10	10	10	10	10	10	10	10	10	10	10	
Shell Crude	10	10	10	10	10	10	10	10	10	10	10	10	10	10	10	10	10	10	10	10	10	10	10	10	10	10	10	10	10	10	10	10	10	10	10	10	
Lynchburg Ferries	10	10	10	10	10	10	10	10	10	10	10	10	10	9	10	10	10	8	10	10	10	10	10	10	10	10	10	10	10	10	10	10	10	10	10	10	
Exxon 3	10	10	10	10	10	10	10	10	10	10	10	10	10	10	10	10	10	9	9	10	10	10	10	10	10	10	10	10	10	10	10	10	10	10	10	10	
Morgans Point	10	10	10	10	10	10	10	10	10	10	10	10	10	10	10	10	9	9	9	10	10	10	10	10	10	10	10	10	10	10	10	10	10	10	10	10	
75/76	10	10	10	10	10	10	10	10	10	10	10	10	10	10	10	10	10	10	10	10	10	10	10	10	10	10	10	10	10	10	10	10	10	10	10	10	
63/64	10	10	10	10	10	10	10	10	10	10	10	10	10	10	10	10	10	10	10	10	10	10	10	10	10	10	10	10	10	10	10	10	10	10	10	10	
51/52	10	10	10	10	10	10	10	10	10	10	10	10	10	10	10	10	10	10	10	10	10	10	10	10	10	10	10	10	10	10	10	10	10	10	10	10	
37/38	10	10	10	10	10	10	10	10	10	10	10	10	10	10	10	10	10	10	10	10	10	10	10	10	10	10	10	10	10	10	10	10	10	10	10	10	
25/26	10	10	10	10	10	10	10	10	10	10	10	10	10	10	10	10	10	10	10	10	10	10	10	10	10	10	10	10	10	10	10	10	10	10	10	10	
11/12	10	10	10	10	10	10	10	10	10	10	10	10	10	10	10	10	10	10	10	10	10	10	10	10	10	10	10	10	10	10	10	10	10	10	10	10	
1 & 2 Bravo	10	10	10	10	10	10	10	10	10	10	10	10	10	10	10	10	9	9	9	10	10	10	10	10	10	10	10	10	10	10	10	10	10	10	10	10	10

NOTE: This is automated data that may/may not agree with the official BAM thinking that's found on the daily slides or special visibility report slides. This data should be used as a guide only

Houston Pilots Wind Chart



Example

Sustained wind 13 Knots
Gusts 18 Knots
Wind from the N

WS: 13
G:18
N

Time Knots	Fri 2pm	Fri 3pm	Fri 4pm	Fri 5pm	Fri 6pm	Fri 7pm	Fri 8pm	Fri 9pm	Fri 10pm	Fri 11pm	Sat 12am	Sat 1am	Sat 2am	Sat 3am	Sat 4am	Sat 5am	Sat 6am	Sat 7am	Sat 8am	Sat 9am	Sat 10am	Sat 11am	Sat 12pm	Sat 1pm	Sat 2pm	Sat 3pm	Sat 4pm	Sat 5pm	Sat 6pm	Sat 7pm	Sat 8pm	Sat 9pm	Sat 10pm	Sat 11pm	Sun 12am	Sun 1am
610 Bridge	3	4	3	2	2	2	1	2	3	3	4	4	4	4	4	5	5	5	6	7	6	6	5	5	5	5	5	5	5	4	4	3	3	2	3	2
	6	4	5	4	3	3	3	4	8	10	10	10	10	9	12	7	7	8	6	10	9	9	8	8	8	8	8	8	7	7	5	3	4	4	4	4
	WSW	WSW	WSW	W	SW	SE	E	W	N	SW	ESE	NE	SSE	W	NNE	NNE	N	NNE	NNE	NNE	NNE	NNE	NNE	NNE	NNE	NNE	NNE	NNE	NNE	NNE	NNE	NNE	NE	NE	ENE	ENE
Kinder 1	3	4	3	2	2	2	1	2	2	3	4	4	4	4	5	5	5	5	6	7	6	6	5	5	5	5	5	5	4	4	3	3	2	3	2	
	6	6	5	4	3	4	4	3	7	9	10	10	10	10	12	7	7	8	9	10	9	8	8	8	8	8	8	7	7	5	5	4	4	4	4	
	WSW	WSW	WSW	WSW	S	ESE	ESE	WNW	NNW	SSE	NE	N	SW	W	NNE	NNE	N	NNE	NNE	NNE	NNE	NNE	NNE	NNE	NNE	NNE	NNE	NNE	NNE	NNE	NNE	NE	NE	NE	NE	
Greens Bayou	3	3	2	2	2	2	2	1	2	3	4	4	3	4	5	4	5	5	6	7	6	6	5	5	5	5	5	5	4	4	3	3	2	3	2	
	5	5	4	4	4	5	5	2	5	9	10	11	10	10	13	7	8	8	10	9	8	8	8	8	8	8	8	7	7	5	5	4	4	4	4	
	SW	WSW	SW	SSW	ESE	ESE	SE	WNW	SSW	NNE	NNE	NNE	NW	N	NNE	N	N	NNE	NNE	NNE	NNE	NNE	NNE	NNE	NNE	NNE	NNE	NNE	NNE	NNE	NNE	NNE	NE	NE	NE	NE
Shell Crude	2	3	2	2	3	2	2	1	2	2	3	4	3	4	4	5	5	5	6	7	6	6	5	5	5	6	5	5	4	4	3	3	3	3	2	
	5	5	5	4	5	6	5	2	4	7	10	11	10	10	13	7	8	8	9	10	9	8	8	8	8	8	8	7	7	5	5	4	5	4	4	
	SW	SW	SSW	SSE	ESE	ESE	SE	SW	SSW	NE	NNE	NNE	W	N	NNE	N	N	NNE	NNE	NNE	NNE	NNE	NNE	NNE	NNE	NNE	NNE	NNE	NNE	NNE	NNE	NE	NE	NE	NE	
Lynchburg Ferries	2	2	2	3	3	2	2	1	2	1	3	4	3	4	5	5	5	6	7	6	6	5	5	6	6	6	6	5	5	4	4	3	3	3	3	
	5	5	5	4	5	7	6	3	3	5	10	11	9	11	14	7	8	8	9	10	9	8	8	8	8	8	8	8	7	6	5	5	4	4	4	
	SSW	SSW	S	SE	SE	SE	SE	SW	SE	E	E	NNE	SSW	N	NNE	N	NNE	NNE	NNE	NNE	NNE	NNE	NNE	NNE	NNE	NNE	NNE	NNE	NNE	NNE	NNE	NE	NE	NE	NE	
Exxon 3	2	2	3	3	2	2	2	1	2	1	3	3	3	4	5	6	6	6	7	7	7	6	6	6	6	6	6	5	5	4	4	4	4	3	3	
	6	6	5	5	5	7	6	4	2	3	6	10	9	11	14	8	8	9	9	10	9	8	8	8	8	8	8	7	6	6	5	5	5	5	5	
	SSW	S	SSE	SSE	SE	SE	SE	S	WSW	NE	SW	E	SW	N	NNE	NNE	NNE	NNE	NNE	NNE	NNE	NNE	NNE	NNE	NNE	NNE	NNE	NNE	NNE	NNE	NNE	NNE	NE	NE	NE	NE
Morgans Point	3	3	3	3	3	3	2	2	1	2	2	3	3	4	5	7	7	7	8	8	7	7	6	6	6	7	7	6	6	5	5	4	4	4	4	
	6	6	5	6	6	7	5	5	3	3	4	9	9	10	13	9	9	10	10	10	10	9	9	9	9	9	8	8	7	6	6	6	6	5	5	
	SSE	SSE	SE	SSE	SE	SE	SE	SSE	W	NNE	SSE	S	SW	N	N	NNE	NNE	NNE	NNE	NNE	NNE	NNE	NNE	NNE	NNE	NNE	NNE	NNE	NNE	NNE	NNE	NE	NE	NE	NE	
75/76	4	4	4	4	5	5	3	3	2	2	2	3	5	5	6	9	9	10	9	9	8	7	6	6	6	7	7	7	7	6	6	5	5	5	5	
	6	6	6	7	7	8	5	4	3	2	3	7	10	9	12	10	11	11	11	10	10	10	10	9	9	9	9	8	7	7	6	6	5	5	6	
	ESE	ESE	ESE	SE	SE	SE	SE	SE	S	ENE	NE	SSW	WSW	N	S	NNE	NNE	NNE	NNE	NNE	NNE	NNE	NE	NE	NE	NNE	NNE	NNE	NNE	N	N	NNE	NNE	NE	NE	
63/64	4	3	5	5	6	6	3	2	2	1	3	3	5	6	7	9	10	10	10	10	9	8	7	6	6	6	7	7	7	6	6	5	5	5	5	
	6	6	6	7	8	8	4	3	3	1	3	5	9	9	11	10	11	11	11	11	11	10	10	9	9	8	9	8	8	7	6	6	6	5	6	
	E	ESE	SE	SE	SE	SSE	SE	SE	SSE	ESE	E	SSE	NW	N	WNW	NNE	NNE	NNE	NNE	NNE	NNE	NNE	NNE	NNE	NE	NNE	E	NE	ESE	N	N	NNE	NNE	NE	ENE	
51/52	3	3	6	6	6	5	3	1	2	1	2	3	3	5	7	9	10	10	10	10	9	8	7	6	6	6	7	7	7	6	5	5	5	4	5	
	5	5	7	7	7	7	5	2	3	1	2	5	6	9	12	10	11	11	11	11	11	10	10	9	8	8	9	8	8	7	6	6	5	6	6	
	NE	ESE	SE	SE	SE	SSE	SSE	ESE	SE	ESE	S	NE	NNW	N	S	NNE	NNE	NNE	NNE	NNE	NNE	NNE	NNE	NNE	SE	SSW	S	SW	E	N	NNE	NNE	NE	ENE		
37/38	4	3	6	5	5	4	3	1	1	1	1	4	3	4	7	9	10	10	10	10	9	8	7	6	6	6	6	7	6	5	5	4	4	4	4	
	5	5	7	6	6	6	5	2	2	1	2	5	5	8	13	10	11	11	12	11	11	10	9	8	8	8	7	7	6	6	6	6	5	5	5	
	ENE	ESE	SE	SE	SE	SE	SSE	SE	ESE	SE	S	ENE	NNW	NNW	SSE	NNE	NNE	NNE	NNE	NNE	NNE	NNE	NNE	NNE	S	W	W	W	E	N	NNE	NNE	NNE	NE	NE	
25/26	3	4	6	4	4	4	2	2	1	1	1	3	3	4	7	8	9	9	10	10	9	8	7	6	6	6	6	6	5	4	4	4	4	4	4	
	4	5	6	5	5	6	4	3	1	1	1	4	5	8	13	10	10	11	11	11	11	10	10	8	8	7	8	7	6	6	6	6	5	5	6	
	ESE	ESE	SE	SE	SE	SE	SSE	ESE	ESE	ESE	SE	E	N	NNW	E	NNE	NNE	NNE	NNE	NNE	NNE	NNE	NNE	ENE	W	SSW	WNW	NNE	NNE	NNE	NNE	NE	NE	NE	NE	
11/12	2	4	5	4	3	4	2	2	1	1	0	3	4	5	7	8	9	9	10	10	9	8	7	6	6	6	6	5	5	5	5	4	4	5	5	
	4	5	6	5	5	5	3	3	1	1	1	5	6	8	13	10	11	11	11	11	11	10	10	8	8	7	8	7	7	6	6	6	6	6		
	SE	SE	SE	SE	SE	SE	SE	SE	ENE	SE	SSW	SE	NW	NNW	NNE	NNE	NNE	NNE	NNE	NNE	NNE	NNE	NNE	NNE	SSW	SE	NNW	N	NNE	NNE	NNE	NE	NE	NE	NE	
1 & 2 Bravo	1	4	5	4	4	4	3	1	1	1	1	5	5	6	10	11	11	12	12	11	10	9	8	7	6	5	6	6	7	6	6	6	6	6	7	
	2	4	5	5	5	5	3	1	1	1	2	5	7	8	13	12	12	13	13	12	11	11	10	9	8	7	8	7	7	7	7	7	7	6	7	
	E	SE	SE	SSE	SE	ESE	ESE	ESE	ENE	SSW	NW	N	NNW	N	N	NNE	NNE	NNE	NNE	NNE	NNE	NNE	NE	NE	NE	NNE	NNE	NNE	NNE	ENE	NNE	NNE	NE	NE	NE	

NOTE: This is automated data that may/may not agree with the official BAM thinking that's found on the daily slides.
This data should be used as a guide only

Houston Pilots: Fri. 11/17/2023

Forecast Discussion

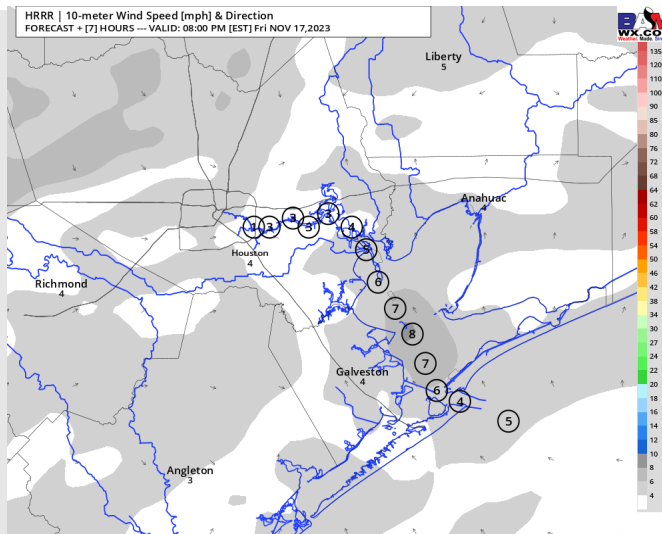
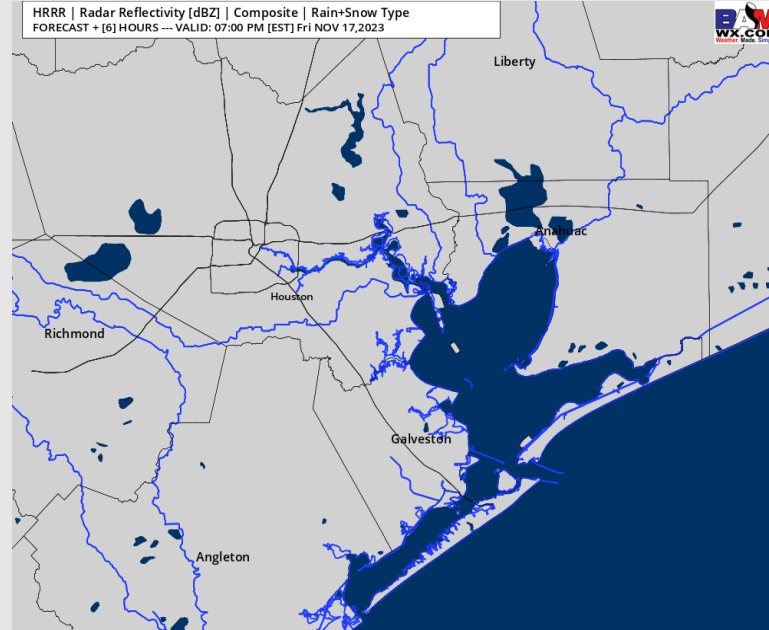
Precip: Favoring dry conditions throughout the rest of the day.

Wind: Winds direction will be variable throughout the PM hours, although generally being from the SE. **N of Morgan's Point:** Winds will be at 2-7 kts. **S of Morgan's Point:** Winds will be at 3 – 8 kts the rest of the day.

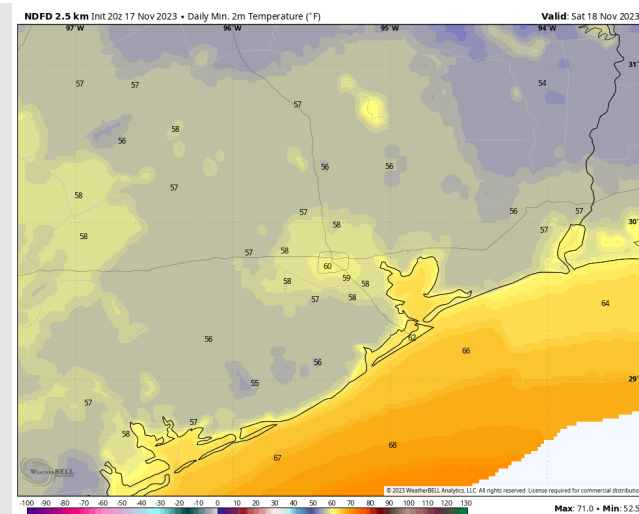
Low Temps: **N of Morgan's Point:** Near 60 F. **S of Morgan's Point:** Mid 60s F.

Visibility: A low end risk of reduced visibilities S of Morgan's Point will be possible beginning at 11 PM and last through the early AM hours on SAT.

Precip Image: 6 PM CT



Wind Speed:
7 PM CT



Low Temps
SAT AM

Houston Pilots: Sat. 11/18/2023

Forecast Discussion

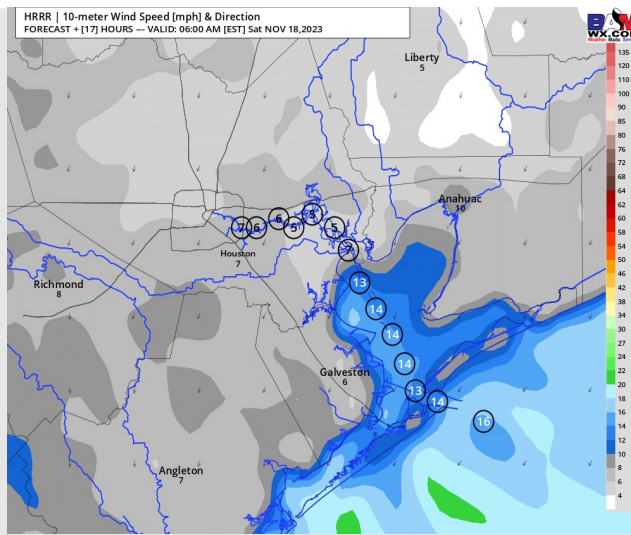
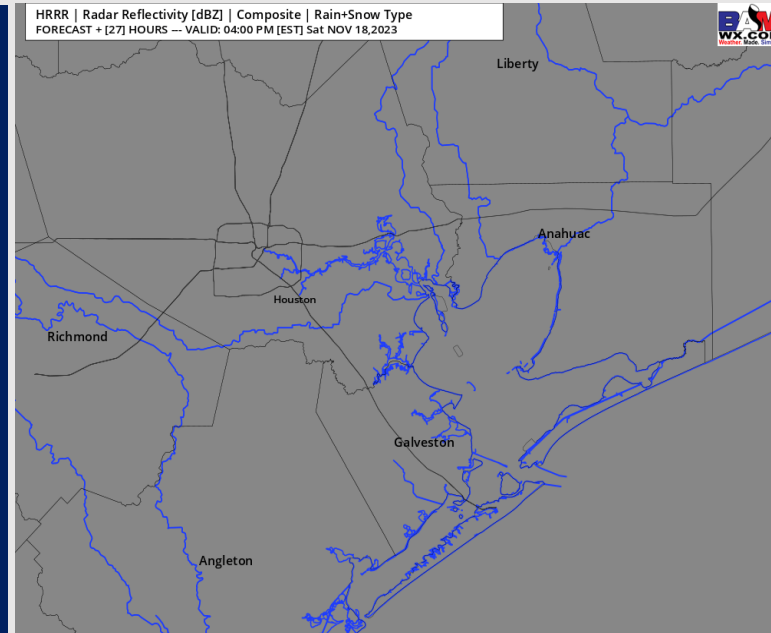
Precip: Favoring dry conditions throughout the day.

Wind: Winds will be out of the E/NE throughout the AM hours while becoming more variable during the PM. **N of Morgan's Point:** Winds at 4 - 8 kts through the whole day. **S of Morgan's Point:** Winds at 3-8 kts through 3 AM before increasing to 10-15 kts through 12 PM. During the PM hours, winds will decrease to 5-10 kts for the rest of the day. **Gusts of 18-22 kts possible through 10 AM.**

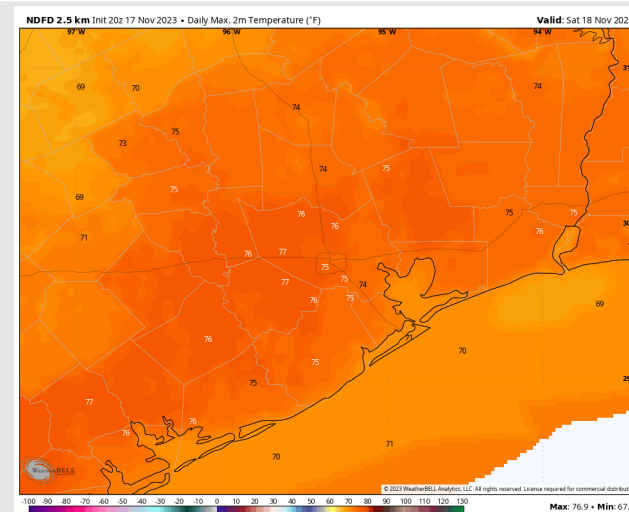
High Temps: **N of Morgan's Point:** Mid-Upper 70s F. **S of Morgan's Point:** Low 70s F.

Visibility: Reduced visibilities will be possible through 3 AM CT SAT S of Morgan's Point due to patchy fog/low clouds. Not anticipating this to be a widespread event.

Precip Image: 3 PM CT



Wind Speed:
5 AM CT



High Temps
Saturday

Houston Pilots: Sun. 11/19/2023

Forecast Discussion

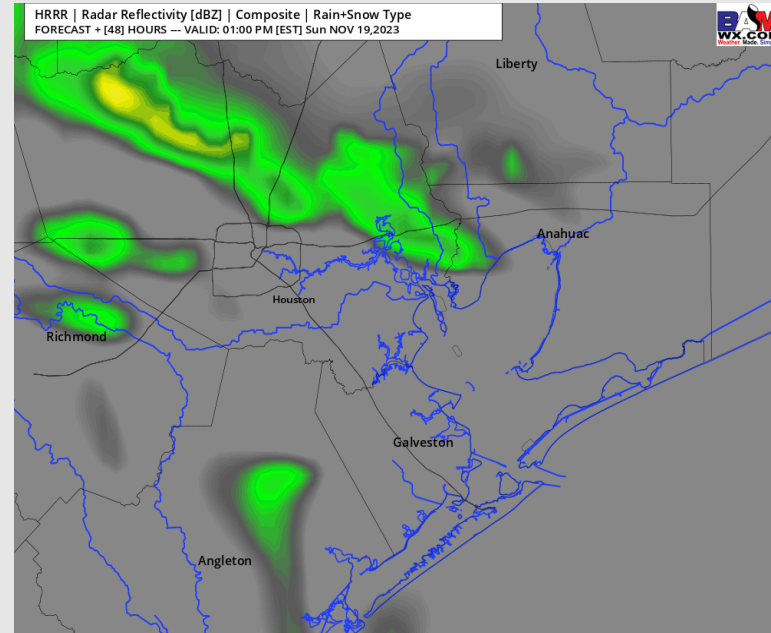
Precip: Dry conditions favored for the AM hours on Sunday, with a 10-20% chance of light/isolated showers between 12-8 PM.

Wind: Winds will start of variable but be out of the E/SE by 5 AM SUN and gradually veering to the S/SSE by 2 PM. **N of Morgan's Point:** Winds N of Morgan's Point will be at 3-8 kts for much of the AM hours, before an increase to 6-11 kts between 10 AM - 6 PM. Wind will then calm to 3-8 kts after this time. **S of Morgan's Point:** Winds will be 3-8 kts through 8 AM, increasing to 6-11 kts for the remainder of the day.

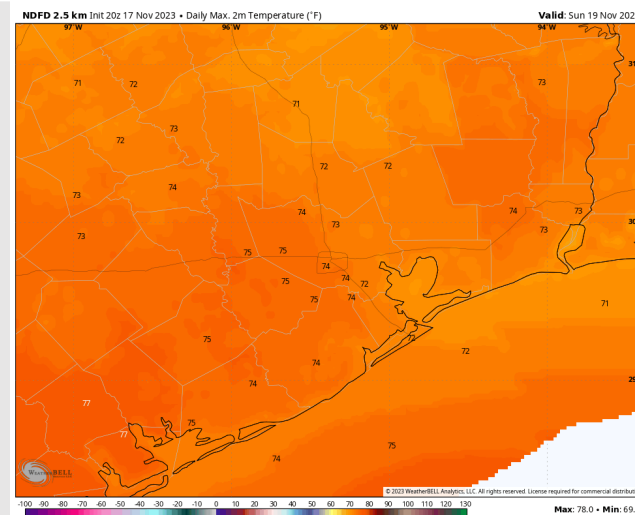
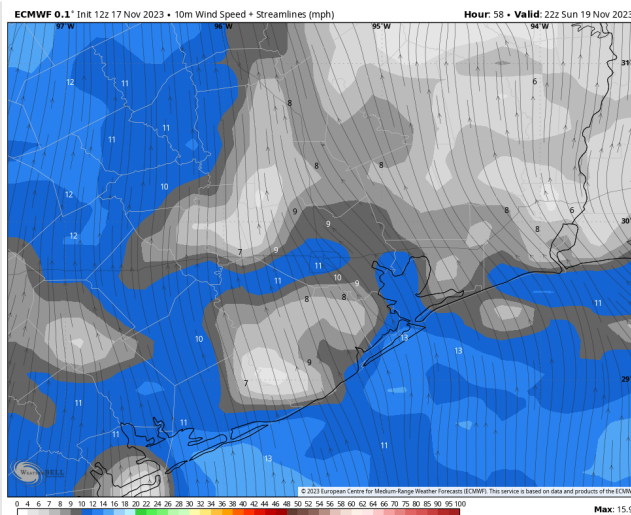
High Temps: **N of Morgan's Point:** Mid 70s F. **S of Morgan's Point:** Low 70s F.

Visibility: Not anticipating any visibility concern.

Precip Image: 12 PM CT



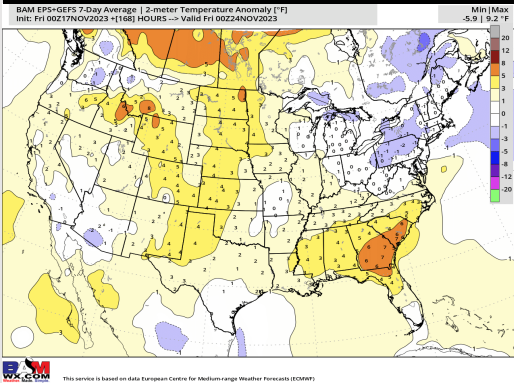
Wind Speed:
4 PM CT



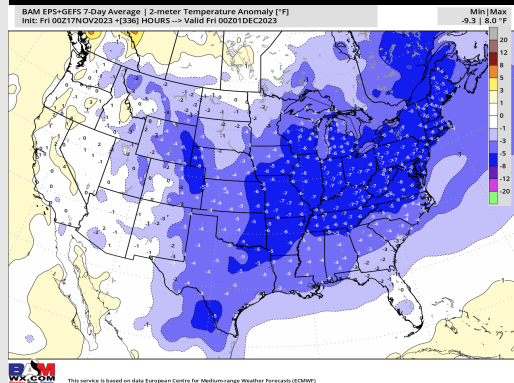
High Temps
Sunday

Houston Pilots: 11/17/23

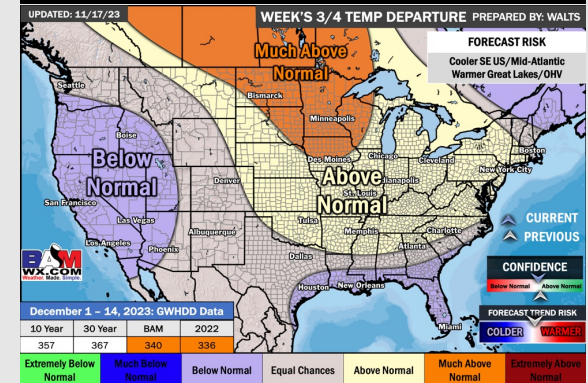
Next 7 Day Temperature Departure



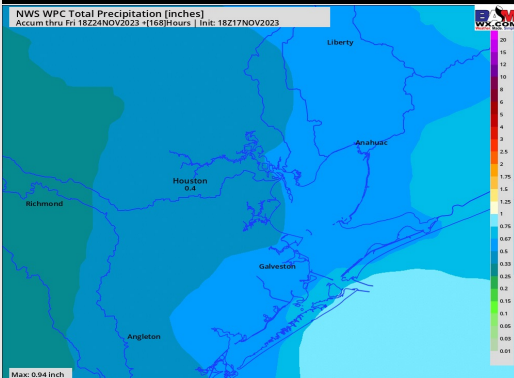
8-14 Day Temperature Departure



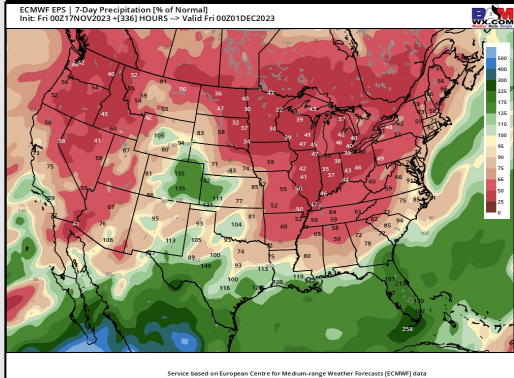
15-30 Day Temperature Departure



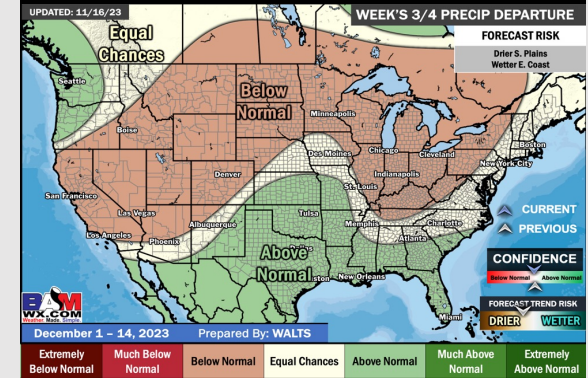
Next 7 Day Total Precipitation



8-14 Day % of Average Precip.



15-30 Day % of Average Precip.



- A drier start to the weekend with SUN through TUE presenting rain chances. Anticipating seasonable to slightly above normal temps for this upcoming week.
- Above normal rainfall and below normal temperatures are expected into the week 2 timeframe.
- Below normal temperatures and above normal chances for precipitation are favored in the weeks ³/₄ timeframe.