

# Houston Pilots Forecast Package



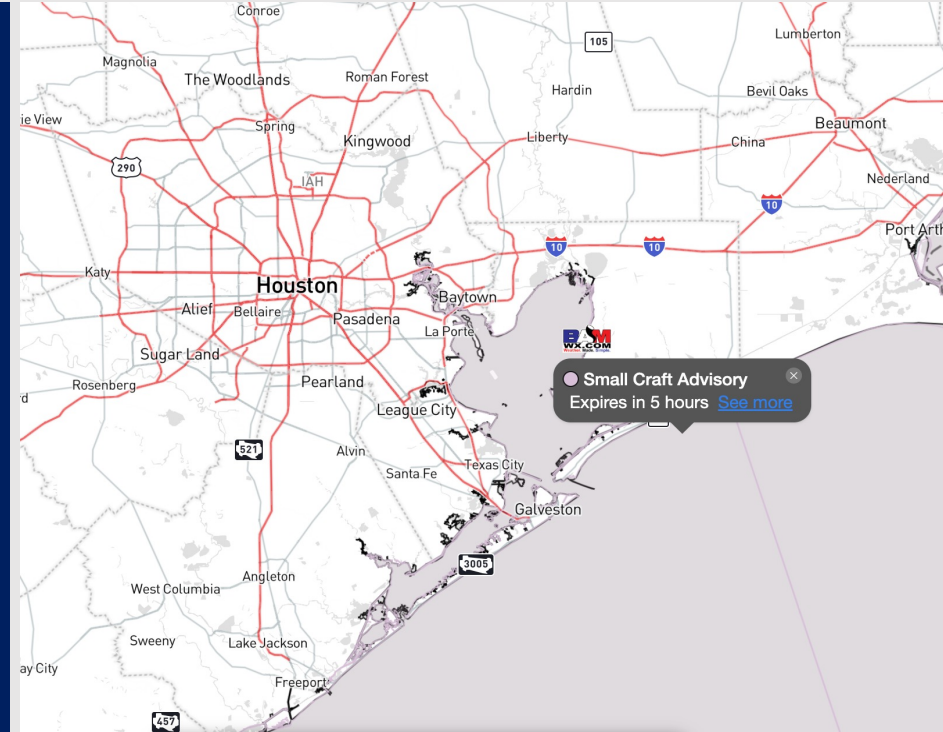
Updated: 4:20 AM CT

Monday, November 27, 2023

Forecaster: Will Danby

## Weather Headlines

- Favoring dry conditions over the next few days, with rainfall chances returning on Thursday. Active pattern remains into the weekend with rain chances.
- Not anticipating any visibility concerns over the next few days outside of a low-end risk on Wednesday.
- Elevated winds S of Morgan's Point will slowly calm throughout the morning, making way for calmer winds that rarely exceed 12 kts over the next few days.



**Radar/NWS Alerts: 4:14 AM CT**



As always, please do not hesitate to reach out to us with any forecast questions via the chat option on the Weather Porthole or our on-call number, **(317)-560-8122** press 1 for forecast questions.

# Houston Pilots Extended Range Visibility Report



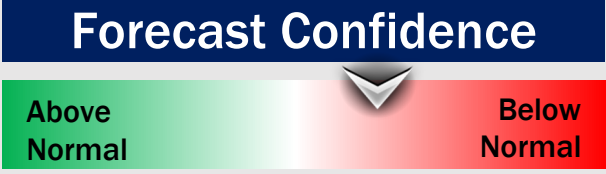
## Thursday 11/30/23

No fog concerns Thursday, but showers could limit visibility in 2-3 mi range at times.



## Friday 12/1/23

No fog concerns Friday.



## Saturday 12/2/23

While lower confidence is present, a low-end risk is possible for sea fog. Better corridor looks to sit east of the Boarding Station however for now.



## Chance for Fog

Thursday AM	Unlikely
Thursday PM	Unlikely
Friday AM	Unlikely
Friday PM	Unlikely
Saturday AM	Low-end
Saturday PM	Unlikely

# Houston Pilots Visibility Chart (miles)



Time	Mon 4am	Mon 5am	Mon 6am	Mon 7am	Mon 8am	Mon 9am	Mon 10am	Mon 11am	Mon 12pm	Mon 1pm	Mon 2pm	Mon 3pm	Mon 4pm	Mon 5pm	Mon 6pm	Mon 7pm	Mon 8pm	Mon 9pm	Mon 10pm	Mon 11pm	Tue 12am	Tue 1am	Tue 2am	Tue 3am	Tue 4am	Tue 5am	Tue 6am	Tue 7am	Tue 8am	Tue 9am	Tue 10am	Tue 11am	Tue 12pm	Tue 1pm	Tue 2pm	Tue 3pm	
610 Bridge	10	10	10	10	10	10	10	10	10	10	10	10	10	10	10	10	10	10	10	10	10	10	10	10	10	10	10	10	10	10	10	10	10	10	10	10	10
Kinder 1	10	10	10	10	10	10	10	10	10	10	10	10	10	10	10	10	10	10	10	10	10	10	10	10	10	10	10	10	10	10	10	10	10	10	10	10	10
Greens Bayou	10	10	10	10	10	10	10	10	10	10	10	10	10	10	10	10	10	10	10	10	10	10	10	10	10	10	10	10	10	10	10	10	10	10	10	10	10
Shell Crude	10	10	10	10	10	10	10	10	10	10	10	10	10	10	10	10	10	10	10	10	10	10	10	10	10	10	10	10	10	10	10	10	10	10	10	10	10
Lynchburg Ferries	10	10	10	10	10	10	10	10	10	10	10	10	10	10	10	10	10	10	10	10	10	10	10	10	10	10	10	10	10	10	10	10	10	10	10	10	10
Exxon 3	10	10	10	10	10	10	10	10	10	10	10	10	10	10	10	10	10	10	10	10	10	10	10	10	10	10	10	10	10	10	10	10	10	10	10	10	10
Morgans Point	10	10	10	10	10	10	10	10	10	10	10	10	10	10	10	10	10	10	10	10	10	10	10	10	10	10	10	10	10	10	10	10	10	10	10	10	10
75/76	10	10	10	10	10	10	10	10	10	10	10	10	10	10	10	10	10	10	10	10	10	10	10	10	10	10	10	10	10	10	10	10	10	10	10	10	10
63/64	10	10	10	10	10	10	10	10	10	10	10	10	10	10	10	10	10	10	10	10	10	10	10	10	10	10	10	10	10	10	10	10	10	10	10	10	10
51/52	10	10	10	10	10	10	10	10	10	10	10	10	10	10	10	10	10	10	10	10	10	10	10	10	10	10	10	10	10	10	10	10	10	10	10	10	10
37/38	10	10	10	10	10	10	10	10	10	10	10	10	10	10	10	10	10	10	10	10	10	10	10	10	10	10	10	10	10	10	10	10	10	10	10	10	10
25/26	10	10	10	10	10	10	10	10	10	10	10	10	10	10	10	10	10	10	10	10	10	10	10	10	10	10	10	10	10	10	10	10	10	10	10	10	10
11/12	10	10	10	10	10	10	10	10	10	10	10	10	10	10	10	10	10	10	10	10	10	10	10	10	10	10	10	10	10	10	10	10	10	10	10	10	10
1 & 2 Bravo	10	10	10	10	10	10	10	10	10	10	10	10	10	10	10	10	10	10	10	10	10	10	10	10	10	10	10	10	10	10	10	10	10	10	10	10	10

**NOTE: This is automated data that may/may not agree with the official BAM thinking that's found on the daily slides or special visibility report slides. This data should be used as a guide only**

# Houston Pilots Wind Chart



## Forecast Confidence



## Example

Sustained wind 13 Knots  
Gusts 18 Knots  
Wind from the N

WS: 13  
G:18  
N

Time Knots	Mon 4am	Mon 5am	Mon 6am	Mon 7am	Mon 8am	Mon 9am	Mon 10am	Mon 11am	Mon 12pm	Mon 1pm	Mon 2pm	Mon 3pm	Mon 4pm	Mon 5pm	Mon 6pm	Mon 7pm	Mon 8pm	Mon 9pm	Mon 10pm	Mon 11pm	Tue 12am	Tue 1am	Tue 2am	Tue 3am	Tue 4am	Tue 5am	Tue 6am	Tue 7am	Tue 8am	Tue 9am	Tue 10am	Tue 11am	Tue 12pm	Tue 1pm	Tue 2pm	Tue 3pm
610 Bridge	3	3	3	4	6	7	7	7	7	7	6	6	6	5	4	5	4	4	4	4	4	4	4	4	4	4	4	4	4	6	6	5	5	4	4	4
	NNE	NNE	NNE	NNE	NNE	NNE	NNE	NNE	NNE	N	N	NE	ENE	ENE	ENE	NNE	N	N	NNE	NNE	NNE	NNE	NNE	NNE	NNE	NNE	NNE	NNE	NE	NE	ENE	ENE	ENE	ENE	ENE	NE
Kinder 1	3	3	4	4	6	6	7	7	7	7	6	6	6	5	4	5	4	4	4	4	4	4	4	4	4	4	4	5	6	6	5	5	4	4	4	
	NNE	NNE	NNE	NNE	NNE	NNE	NNE	NNE	NNE	N	N	N	N	NNE	NNE	NNE	N	N	NNE	NNE	NNE	NNE	NNE	NNE	NNE	NNE	NNE	NE	NE	ENE	ENE	ENE	ENE	ENE	NE	
Greens Bayou	3	3	3	4	6	6	7	7	7	7	6	6	6	5	4	5	4	4	4	4	4	4	4	4	4	4	4	5	6	5	5	5	4	4	4	
	NNE	NNE	NNE	NNE	NNE	NNE	NNE	NNE	NNE	N	NNE	NNE	NE	NNE	NNE	N	N	N	NNE	NNE	NNE	NNE	NNE	NNE	NNE	NNE	NNE	NNE	NE	NE	ENE	ENE	ENE	ENE	ENE	NE
Shell Crude	3	3	4	4	6	6	7	7	7	7	6	6	6	5	4	5	5	5	4	4	4	4	4	4	4	4	4	5	6	6	5	5	4	4	4	
	NNE	NNE	NNE	NNE	NNE	NNE	NNE	NNE	NNE	ENE	ENE	ESE	SE	NE	NNE	N	N	NNE	NNE	NNE	NNE	NNE	NNE	NNE	NNE	NNE	NNE	NE	NE	ENE	ENE	ENE	ENE	ENE	ENE	
Lynchburg Ferries	2	3	3	4	6	6	7	7	7	7	6	6	6	5	4	5	5	5	4	4	4	4	4	4	4	4	4	5	6	6	5	5	4	4	4	
	NNE	NNE	N	N	NNE	NNE	NNE	NNE	N	S	SSW	WSW	W	SSE	NE	NNE	N	NNE	NNE	NNE	NNE	NNE	NNE	NNE	NNE	NNE	NNE	NNE	NE	NE	ENE	ENE	ENE	ENE	ENE	
Exxon 3	3	3	4	4	6	6	7	7	7	7	6	6	6	5	4	6	6	6	5	5	5	5	5	5	5	5	6	6	6	6	6	5	5	4	4	
	N	NNE	NNE	N	NNE	NNE	NNE	NNE	N	S	NNW	N	N	NW	SW	E	N	NNE	NNE	NNE	NNE	NNE	NNE	NNE	NNE	NNE	NNE	NE	NE	ENE	ENE	ENE	ENE	ENE	ENE	
Morgans Point	5	6	6	6	8	8	8	7	7	7	7	7	7	6	6	8	7	7	7	6	7	7	7	7	7	7	8	7	7	8	7	7	6	5	6	
	NNE	NNE	NNE	NNE	NNE	NNE	NNE	NNE	NNE	E	NNW	N	N	N	NNW	NE	N	NNE	NNE	NNE	NNE	NNE	NNE	NNE	NNE	NNE	NNE	NNE	NE	NE	ENE	ENE	ENE	ENE	E	
75/76	12	12	12	12	12	11	11	9	8	8	8	8	9	9	10	10	10	9	9	9	9	10	11	11	11	11	11	11	10	10	9	8	7	6	6	6
	NNE	NNE	NNE	NNE	NNE	NNE	NNE	NNE	NE	SW	N	N	N	N	N	NNE	NNE	NNE	NNE	NNE	NNE	NNE	NNE	NNE	NNE	NNE	NNE	NNE	NE	NE	ENE	ENE	ENE	ENE	ENE	ENE
63/64	15	16	15	15	15	14	13	11	9	8	8	9	10	10	12	11	10	10	10	11	11	11	12	12	13	13	13	13	13	12	11	10	8	7	6	6
	NNE	NNE	NNE	NNE	NNE	NNE	NNE	NNE	NNE	ENE	WNW	N	N	NNW	N	NNE	NNE	NNE	NNE	NNE	NNE	NNE	NNE	NNE	NNE	NNE	NNE	NNE	NE	NE	ENE	ENE	ENE	ENE	ENE	
51/52	16	17	16	15	15	14	13	12	10	9	8	9	10	11	11	11	10	10	10	11	11	11	12	12	12	13	13	13	12	11	9	8	7	6	6	
	NNE	NNE	NNE	NE	NE	NNE	NNE	NNE	NNE	N	SE	N	N	NNW	NNE	NNE	NNE	NNE	NNE	NNE	NNE	NNE	NNE	NNE	NNE	NNE	NNE	NE	NE	ENE	ENE	ENE	ENE	ENE	ENE	
37/38	17	17	16	15	15	14	13	11	10	9	9	9	10	11	11	10	9	9	10	10	10	11	11	12	12	12	13	13	12	12	10	9	8	7	6	6
	NNE	NNE	NNE	NE	NE	NNE	NNE	NNE	NNE	NE	SE	SE	N	WNW	NNE	NNE	NNE	NNE	NNE	NNE	NNE	NNE	NNE	NNE	NNE	NNE	NNE	NE	NE	ENE	ENE	ENE	ENE	ENE	ENE	
25/26	15	16	15	14	14	14	12	10	9	9	9	9	9	10	10	9	8	8	9	9	9	10	10	10	11	11	12	12	11	11	10	9	8	8	7	7
	NNE	NNE	NNE	NE	NE	NNE	NNE	NNE	NNE	NE	SSW	SSW	NNW	NNW	S	NNE	NNE	NNE	NNE	NNE	NNE	NNE	NNE	NNE	NNE	NNE	NNE	NE	NE	ENE	ENE	ENE	ENE	ENE	ENE	
11/12	14	15	14	13	13	13	12	10	9	8	8	9	9	9	9	9	9	9	9	10	10	10	10	11	11	11	12	11	11	10	9	8	8	8	7	
	NNE	NNE	NNE	NNE	NNE	NNE	NNE	NNE	NNE	NNE	S	W	N	WNW	NNE	NNE	NNE	NNE	NNE	NNE	NNE	NNE	NNE	NNE	NNE	NNE	NE	NE	NE	ENE	ENE	ENE	ENE	ENE	ENE	
1 & 2 Bravo	18	19	18	17	17	16	14	12	10	9	9	10	10	11	11	11	11	11	12	12	12	12	13	13	14	14	15	15	14	14	13	12	11	9	8	8
	NNE	NNE	NNE	NNE	NE	NNE	NNE	NNE	NNE	NNE	N	N	ENE	NNE	N	NNE	NNE	NNE	NNE	NNE	NNE	NNE	NNE	NNE	NNE	NNE	NE	NE	NE	NE	ENE	ENE	ENE	ENE	ENE	

NOTE: This is automated data that may/may not agree with the official BAM thinking that's found on the daily slides. This data should be used as a guide only

# Houston Pilots: Mon. 11/27/2023



## Forecast Discussion

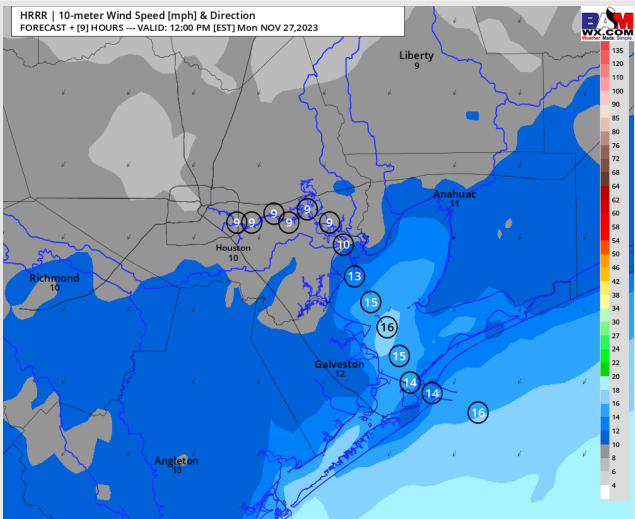
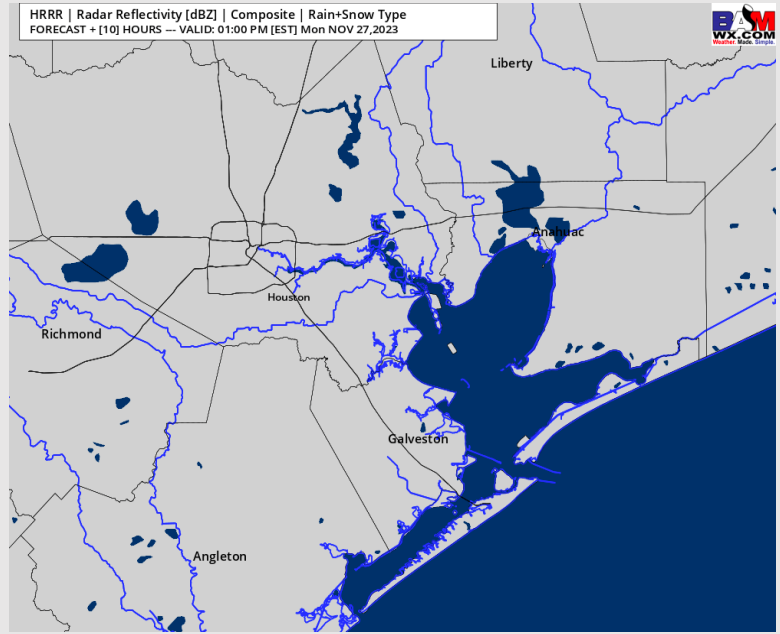
**Precip:** High pressure settles in today. Favoring dry conditions as a result.

**Wind:** Winds will be out of the N/NNE today. **N of Morgan's Point:** Sustained at 3 -8 kts outside of 4 - 9 kts from 10 AM - 2 PM. **S of Morgan's Point:** Winds will begin the day at 15-20 kts but will be on a declining trend in the AM. By 1 PM winds settle in at 8 - 13 kts. Boarding Station winds remain a touch higher at 10 -15 kts.

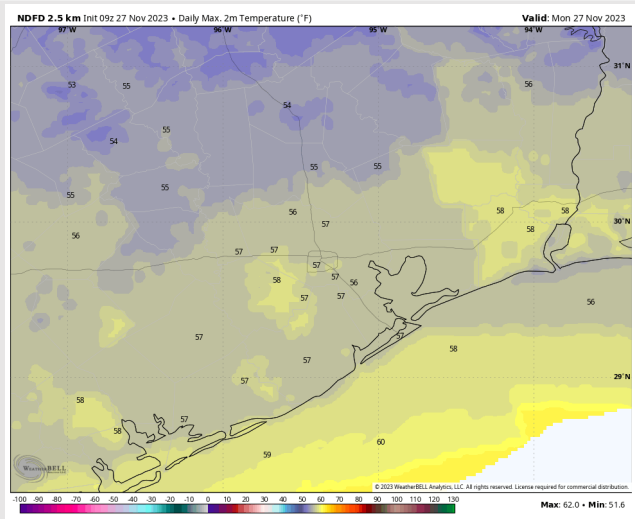
**High Temps:** **N of Morgan's Point:** Mid 50s F. **S of Morgan's Point:** Mid 50s F.

**Visibility:** No visibility concerns for today.

## Precip Image: 12 PM CT



Wind Speed:  
11 AM CT



High Temps  
Today

## Forecast Discussion

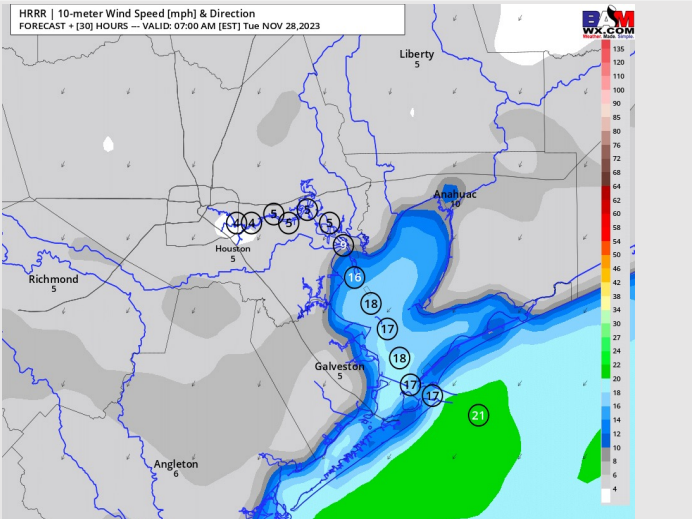
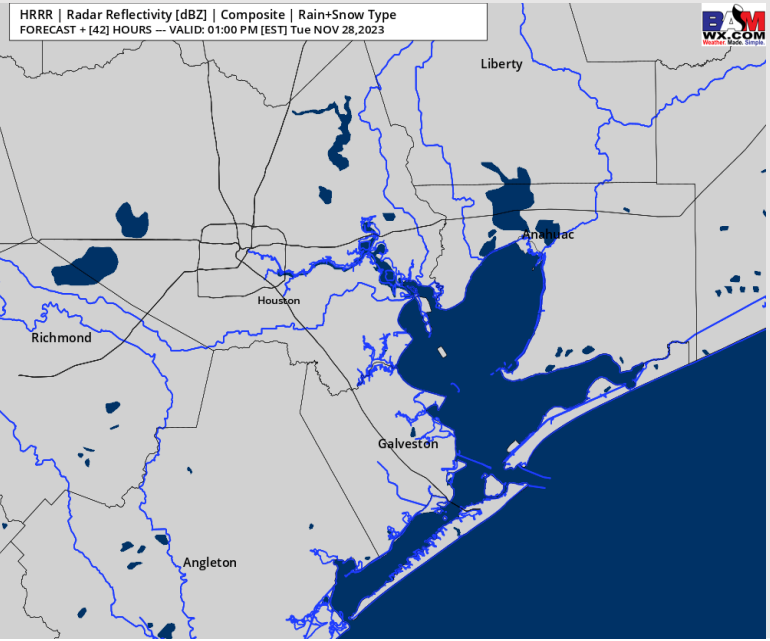
**Precip:** Dry conditions throughout the day Tuesday.

**Wind:** Winds will be from the NE in the early AM, becoming ENE by 10 AM. Winds then will shift out of the SE by 7 PM. **N of Morgan's Point:** Winds will sit at 3 – 8 kts throughout the day, calming to 1 - 5 kts as winds shift SE post 7 PM. **S of Morgan's Point:** Winds will begin the day at 9 – 14 kts with Boarding Station winds at 12 -17 kts. Winds gradually decrease after 9 AM, settling at 3-8 kts by 3 PM. Winds of 7-12 kts will remain at the Boarding Station.

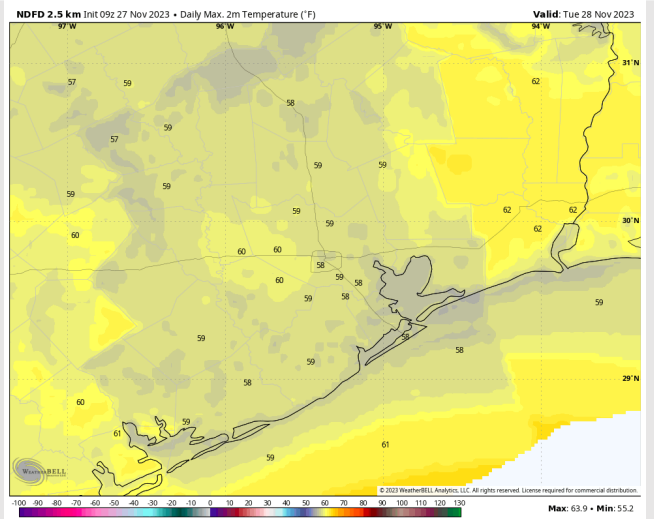
**High Temps:** **N of Morgan's Point:** Upper 50's. **S of Morgan's Point:** Upper 50's F

**Visibility:** No visibility concerns for Tuesday.

## Precip Image: 12 PM CT



Wind Speed:  
6 AM CT

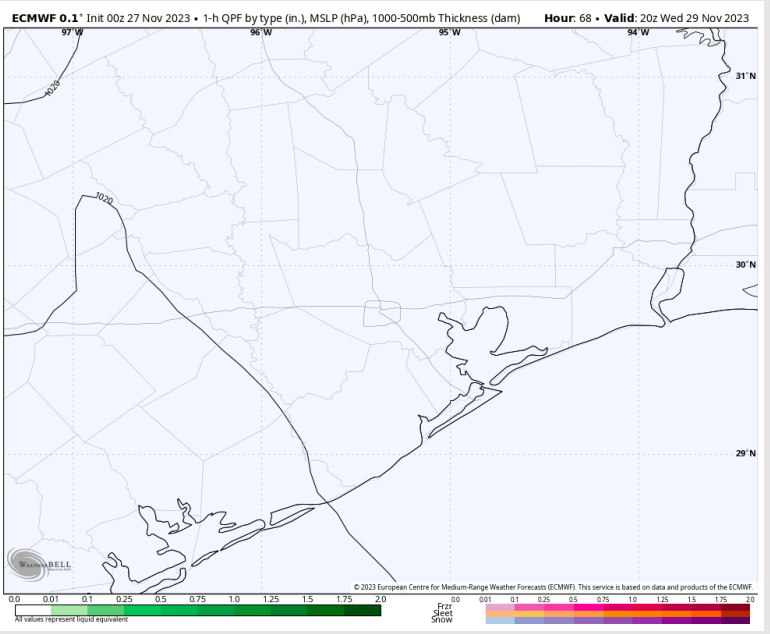


High Temps  
Tuesday

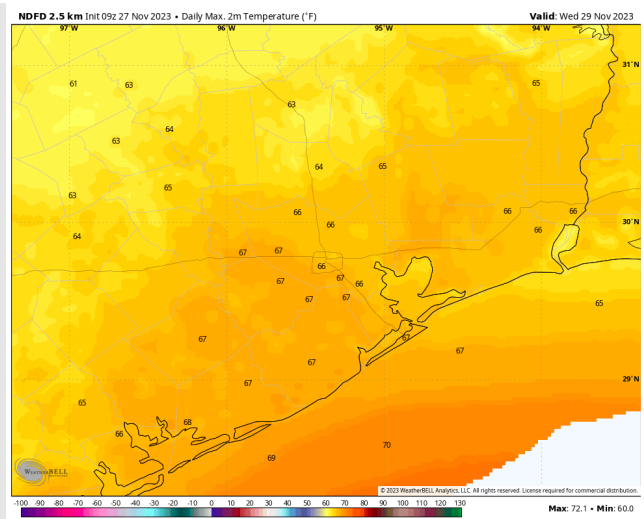
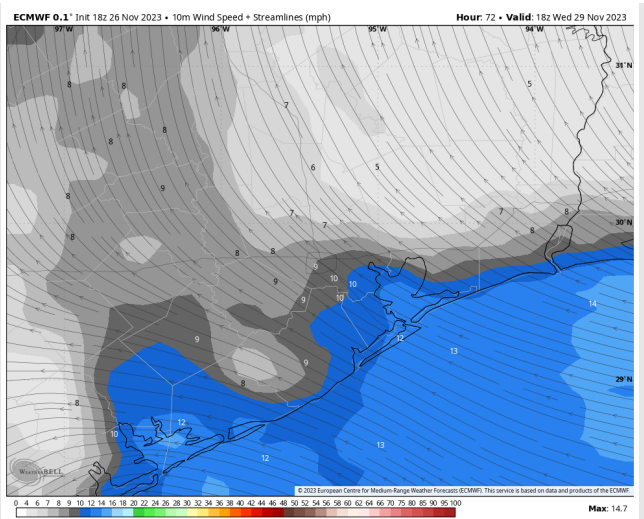
## Forecast Discussion

- Precip:** Favoring dry conditions for Wednesday. Rain chances to not arrive until early Thursday AM.
- Wind:** Winds out of the E will shift out of the SE by 12 PM. **N of Morgan's Point:** Winds will be at 3-8 kts throughout the AM, increasing to 5 - 10 kts after 1 PM. **S of Morgan's Point:** 3-8 kts through 12 PM, increasing to 7-12 kts for the remainder of the day.
- High Temps:** Slightly warmer. **N of Morgan's Point:** Mid 60s F **S of Morgan's Point:** Mid to Upper 60s F.
- Visibility:** A low-end risk for patchy fog will be present for Stations S of Morgan's Point WED AM, though best fog potential is favored to stay to the West of all Stations. Limited low-level moisture is present as well.

## Precip Image: 2 PM CT

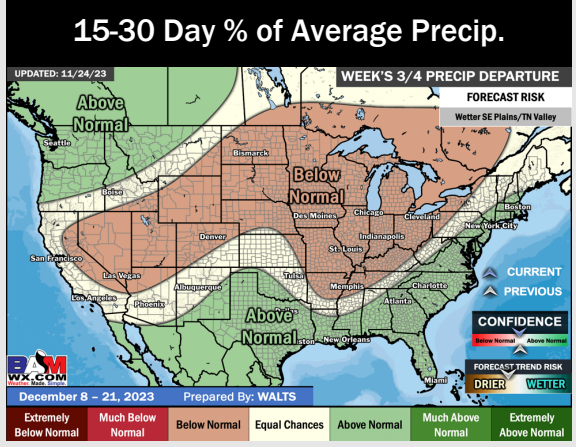
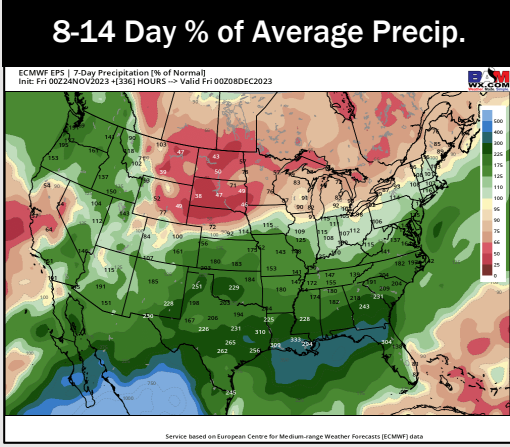
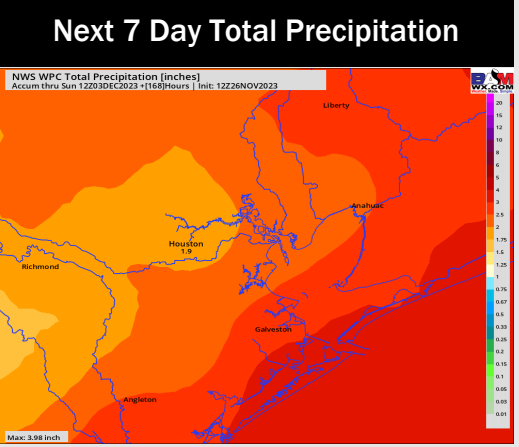
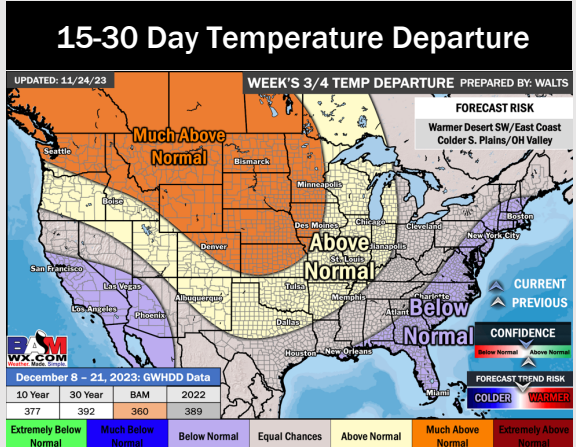
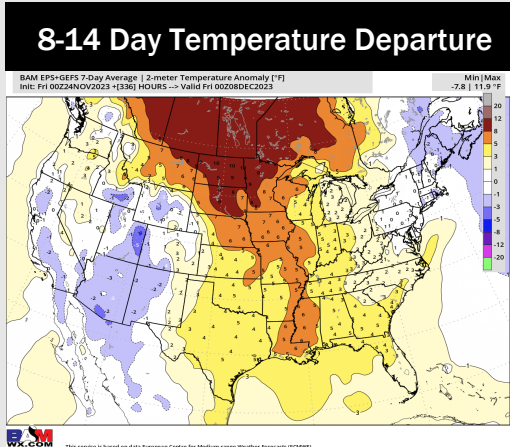
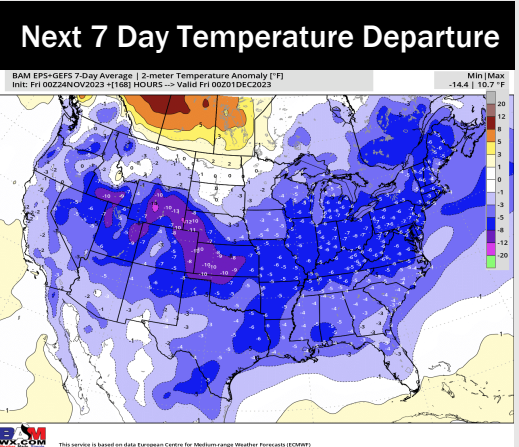


Wind Speed:  
12 PM CT



High Temps  
Wednesday

# Houston Pilots: 11/27/23



- Next organized system looks to enter Thursday AM and exit Friday. An active weekend with rain chances look to persist. Colder than normal weather is expected this week following the last cold front.
- Above normal rainfall and above normal temperatures are expected into the week 2 timeframe.
- Seasonal temperatures and above normal chances for precipitation are favored in the weeks 3/4 timeframe.