

# Houston Pilots Forecast Package



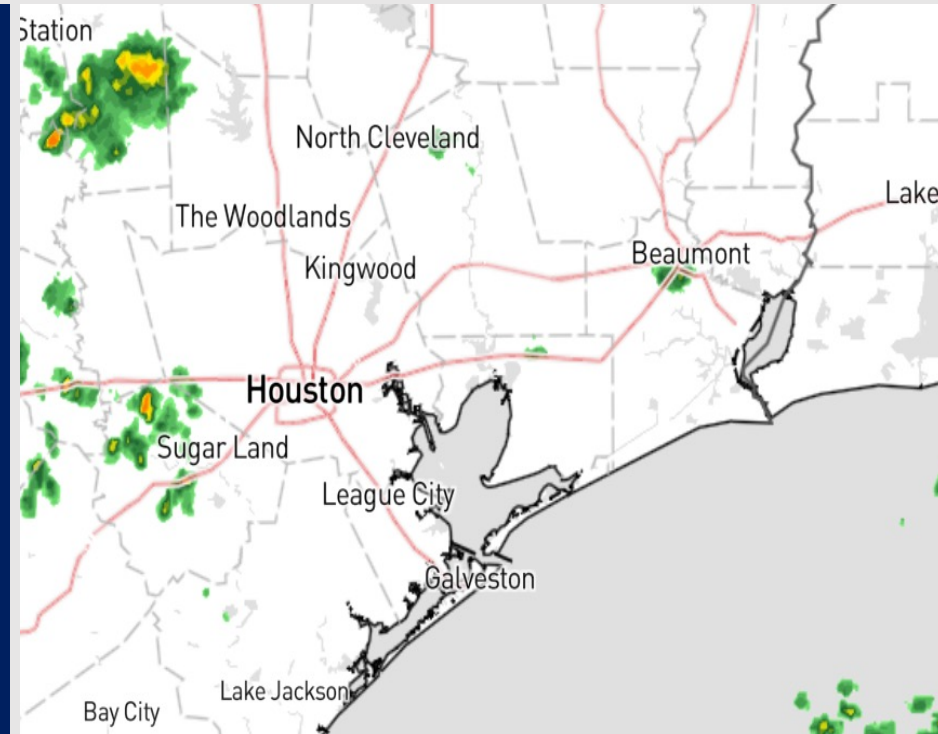
Updated: 2:45 AM CT

Sunday, November 26, 2023

Forecaster: Tyler Riggles

## Weather Headlines

- Scattered rain chances building in this morning, expected to taper off by midday
- Not anticipating any visibility concerns over the next few days outside of a low-end risk on Wednesday.
- Watching for some gustier wind potential today, especially for the Boarding Station. **More details on the daily slides below.**



Radar/NWS Alerts: 2:36 AM CT



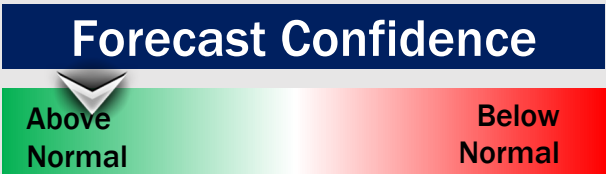
As always, please do not hesitate to reach out to us with any forecast questions via the chat option on the Weather Porthole or our on-call number, **(317)-560-8122** press 1 for forecast questions.

# Houston Pilots Extended Range Visibility Report



## Wednesday 11/29/23

Monitoring a low-end risk for patchy fog Wednesday AM.



## Thursday 11/30/23

No fog concerns Thursday.



## Friday 12/1/23

No fog concerns Friday.



## Chance for Fog

|              |              |
|--------------|--------------|
| Wednesday AM | Low-End Risk |
| Wednesday PM | Low-End Risk |
| Thursday AM  | Unlikely     |
| Thursday PM  | Unlikely     |
| Friday AM    | Unlikely     |
| Friday PM    | Unlikely     |

# Houston Pilots Visibility Chart (miles)



| Time              | Sun 1am | Sun 2am | Sun 3am | Sun 4am | Sun 5am | Sun 6am | Sun 7am | Sun 8am | Sun 9am | Sun 10am | Sun 11am | Sun 12pm | Sun 1pm | Sun 2pm | Sun 3pm | Sun 4pm | Sun 5pm | Sun 6pm | Sun 7pm | Sun 8pm | Sun 9pm | Sun 10pm | Sun 11pm | Mon 12am | Mon 1am | Mon 2am | Mon 3am | Mon 4am | Mon 5am | Mon 6am | Mon 7am | Mon 8am | Mon 9am | Mon 10am | Mon 11am | Mon 12pm |    |
|-------------------|---------|---------|---------|---------|---------|---------|---------|---------|---------|----------|----------|----------|---------|---------|---------|---------|---------|---------|---------|---------|---------|----------|----------|----------|---------|---------|---------|---------|---------|---------|---------|---------|---------|----------|----------|----------|----|
| 610 Bridge        | 10      | 10      | 10      | 10      | 10      | 10      | 10      | 10      | 10      | 10       | 10       | 10       | 10      | 10      | 10      | 10      | 10      | 10      | 10      | 10      | 10      | 10       | 10       | 10       | 10      | 10      | 10      | 10      | 10      | 10      | 10      | 10      | 10      | 10       | 10       | 10       | 10 |
| Kinder 1          | 10      | 10      | 10      | 10      | 10      | 10      | 10      | 10      | 10      | 10       | 10       | 10       | 10      | 10      | 10      | 10      | 10      | 10      | 10      | 10      | 10      | 10       | 10       | 10       | 10      | 10      | 10      | 10      | 10      | 10      | 10      | 10      | 10      | 10       | 10       | 10       | 10 |
| Greens Bayou      | 10      | 10      | 10      | 10      | 10      | 10      | 10      | 10      | 10      | 10       | 10       | 10       | 10      | 10      | 10      | 10      | 10      | 10      | 10      | 10      | 10      | 10       | 10       | 10       | 10      | 10      | 10      | 10      | 10      | 10      | 10      | 10      | 10      | 10       | 10       | 10       | 10 |
| Shell Crude       | 10      | 10      | 10      | 10      | 10      | 10      | 10      | 10      | 10      | 10       | 10       | 10       | 10      | 10      | 10      | 10      | 10      | 10      | 10      | 10      | 10      | 10       | 10       | 10       | 10      | 10      | 10      | 10      | 10      | 10      | 10      | 10      | 10      | 10       | 10       | 10       | 10 |
| Lynchburg Ferries | 10      | 10      | 10      | 10      | 10      | 10      | 10      | 10      | 10      | 10       | 10       | 10       | 10      | 10      | 10      | 10      | 10      | 10      | 10      | 10      | 10      | 10       | 10       | 10       | 10      | 10      | 10      | 10      | 10      | 10      | 10      | 10      | 10      | 10       | 10       | 10       | 10 |
| Exxon 3           | 10      | 10      | 10      | 10      | 10      | 10      | 10      | 10      | 10      | 10       | 10       | 10       | 10      | 10      | 10      | 10      | 10      | 10      | 10      | 10      | 10      | 10       | 10       | 10       | 10      | 10      | 10      | 10      | 10      | 10      | 10      | 10      | 10      | 10       | 10       | 10       | 10 |
| Morgans Point     | 10      | 10      | 10      | 10      | 10      | 10      | 10      | 10      | 10      | 10       | 10       | 10       | 10      | 10      | 10      | 10      | 10      | 10      | 10      | 10      | 10      | 10       | 10       | 10       | 10      | 10      | 10      | 10      | 10      | 10      | 10      | 10      | 10      | 10       | 10       | 10       | 10 |
| 75/76             | 10      | 10      | 10      | 10      | 10      | 10      | 10      | 10      | 10      | 10       | 10       | 10       | 10      | 10      | 10      | 10      | 10      | 10      | 10      | 10      | 10      | 10       | 10       | 10       | 10      | 10      | 10      | 10      | 10      | 10      | 10      | 10      | 10      | 10       | 10       | 10       | 10 |
| 63/64             | 10      | 10      | 10      | 10      | 10      | 10      | 10      | 10      | 10      | 10       | 10       | 10       | 10      | 10      | 10      | 10      | 10      | 10      | 10      | 10      | 10      | 10       | 10       | 10       | 10      | 10      | 10      | 10      | 10      | 10      | 10      | 10      | 10      | 10       | 10       | 10       | 10 |
| 51/52             | 10      | 10      | 10      | 10      | 10      | 10      | 10      | 10      | 10      | 10       | 10       | 10       | 10      | 10      | 10      | 10      | 10      | 10      | 10      | 10      | 10      | 10       | 10       | 10       | 10      | 10      | 10      | 10      | 10      | 10      | 10      | 10      | 10      | 10       | 10       | 10       | 10 |
| 37/38             | 10      | 10      | 10      | 10      | 10      | 10      | 10      | 10      | 10      | 10       | 10       | 10       | 10      | 10      | 10      | 10      | 10      | 10      | 10      | 10      | 10      | 10       | 10       | 10       | 10      | 10      | 10      | 10      | 10      | 10      | 10      | 10      | 10      | 10       | 10       | 10       | 10 |
| 25/26             | 10      | 10      | 10      | 10      | 10      | 10      | 10      | 10      | 10      | 10       | 10       | 10       | 10      | 10      | 10      | 10      | 10      | 10      | 10      | 10      | 10      | 10       | 10       | 10       | 10      | 10      | 10      | 10      | 10      | 10      | 10      | 10      | 10      | 10       | 10       | 10       | 10 |
| 11/12             | 10      | 10      | 10      | 10      | 10      | 10      | 10      | 10      | 10      | 10       | 10       | 10       | 10      | 10      | 10      | 10      | 10      | 10      | 10      | 10      | 10      | 10       | 10       | 10       | 10      | 10      | 10      | 10      | 10      | 10      | 10      | 10      | 10      | 10       | 10       | 10       | 10 |
| 1 & 2 Bravo       | 10      | 10      | 6       | 9       | 10      | 10      | 10      | 10      | 10      | 10       | 10       | 10       | 10      | 10      | 10      | 10      | 10      | 10      | 10      | 10      | 10      | 10       | 10       | 10       | 10      | 10      | 10      | 10      | 10      | 10      | 10      | 10      | 10      | 10       | 10       | 10       | 10 |

**NOTE: This is automated data that may/may not agree with the official BAM thinking that's found on the daily slides or special visibility report slides. This data should be used as a guide only**

# Houston Pilots Wind Chart



**Example**

Sustained wind 13 Knots  
Gusts 18 Knots  
Wind from the N

WS: 13  
G:18  
N

| Time Knots        | Sun 1am | Sun 2am | Sun 3am | Sun 4am | Sun 5am | Sun 6am | Sun 7am | Sun 8am | Sun 9am | Sun 10am | Sun 11am | Sun 12pm | Sun 1pm | Sun 2pm | Sun 3pm | Sun 4pm | Sun 5pm | Sun 6pm | Sun 7pm | Sun 8pm | Sun 9pm | Sun 10pm | Sun 11pm | Mon 12am | Mon 1am | Mon 2am | Mon 3am | Mon 4am | Mon 5am | Mon 6am | Mon 7am | Mon 8am | Mon 9am | Mon 10am | Mon 11am | Mon 12pm |     |    |
|-------------------|---------|---------|---------|---------|---------|---------|---------|---------|---------|----------|----------|----------|---------|---------|---------|---------|---------|---------|---------|---------|---------|----------|----------|----------|---------|---------|---------|---------|---------|---------|---------|---------|---------|----------|----------|----------|-----|----|
| 610 Bridge        | 4       | 4       | 4       | 5       | 6       | 6       | 7       | 7       | 7       | 9        | 10       | 10       | 11      | 11      | 10      | 12      | 11      | 11      | 11      | 10      | 10      | 9        | 8        | 8        | 8       | 7       | 8       | 7       | 8       | 7       | 8       | 8       | 8       | 7        | 8        | 8        | 7   | 7  |
|                   | 6       | 8       | 9       | 11      | 15      | 16      | 17      | 19      | 19      | 17       | 18       | 17       | 18      | 17      | 17      | 18      | 17      | 17      | 16      | 15      | 15      | 13       | 12       | 12       | 12      | 12      | 13      | 11      | 12      | 11      | 12      | 13      | 12      | 13       | 12       | 11       | 10  |    |
|                   | ESE     | SE      | NNE     | SW      | N       | ENE     | N       | N       | N       | N        | N        | NNW      | NNW     | NNW     | NNW     | N       | N       | N       | N       | N       | N       | N        | ESE      | N        | N       | N       | N       | NNE     | NNE     | NNE     | NNE     | NNE     | NNE     | NNE      | NNE      | NNE      | NNE |    |
| Kinder 1          | 3       | 4       | 4       | 4       | 6       | 7       | 7       | 7       | 7       | 9        | 10       | 10       | 11      | 11      | 10      | 11      | 11      | 11      | 10      | 10      | 9       | 9        | 8        | 8        | 8       | 8       | 8       | 7       | 7       | 8       | 8       | 8       | 8       | 7        | 7        | 7        |     |    |
|                   | 6       | 8       | 9       | 11      | 15      | 16      | 17      | 19      | 19      | 17       | 18       | 17       | 18      | 17      | 17      | 18      | 17      | 16      | 16      | 15      | 15      | 13       | 12       | 12       | 12      | 12      | 13      | 12      | 12      | 11      | 11      | 12      | 13      | 12       | 10       | 10       |     |    |
|                   | S       | ENE     | ENE     | SW      | NNE     | SSE     | N       | N       | N       | N        | N        | NNW      | NNW     | NNW     | NNW     | N       | N       | N       | N       | N       | N       | N        | SW       | N        | N       | N       | N       | NNE     | NNE     | NNE     | NNE     | NNE     | NNE     | NNE      | NNE      | NNE      |     |    |
| Greens Bayou      | 4       | 5       | 4       | 4       | 6       | 7       | 7       | 7       | 7       | 9        | 10       | 10       | 11      | 11      | 10      | 11      | 11      | 10      | 10      | 10      | 9       | 9        | 8        | 8        | 8       | 8       | 8       | 8       | 7       | 7       | 8       | 8       | 8       | 8        | 7        | 7        |     |    |
|                   | 7       | 8       | 10      | 12      | 15      | 17      | 18      | 18      | 19      | 17       | 18       | 17       | 18      | 17      | 17      | 18      | 16      | 16      | 16      | 15      | 14      | 13       | 12       | 12       | 12      | 12      | 13      | 12      | 12      | 11      | 11      | 12      | 13      | 12       | 10       | 10       |     |    |
|                   | S       | NNE     | ESE     | SE      | NNE     | NW      | N       | N       | N       | N        | N        | NNW      | NNW     | NNW     | NNW     | N       | N       | N       | N       | N       | N       | N        | N        | NNE      | N       | N       | N       | N       | NNE     | NNE     | NNE     | NNE     | NNE     | NNE      | NNE      | NNE      |     |    |
| Shell Crude       | 4       | 5       | 4       | 5       | 6       | 7       | 7       | 8       | 7       | 10       | 10       | 11       | 11      | 11      | 11      | 12      | 11      | 11      | 10      | 10      | 10      | 9        | 8        | 8        | 8       | 8       | 8       | 8       | 8       | 8       | 8       | 8       | 8       | 8        | 8        | 7        |     |    |
|                   | 7       | 8       | 9       | 12      | 15      | 17      | 18      | 19      | 20      | 18       | 18       | 18       | 18      | 18      | 17      | 17      | 16      | 16      | 16      | 15      | 15      | 13       | 13       | 13       | 13      | 12      | 13      | 12      | 12      | 11      | 12      | 12      | 13      | 12       | 10       | 10       |     |    |
|                   | SSE     | ENE     | S       | SSE     | NE      | N       | N       | N       | N       | N        | N        | NNW      | NNW     | NNW     | NNW     | N       | N       | N       | N       | N       | N       | N        | N        | ENE      | N       | N       | N       | N       | NNE     | NNE     | NNE     | NNE     | NNE     | NNE      | NNE      | NNE      |     |    |
| Lynchburg Ferries | 4       | 5       | 4       | 5       | 6       | 7       | 7       | 8       | 7       | 10       | 11       | 11       | 11      | 11      | 11      | 12      | 12      | 11      | 11      | 10      | 10      | 9        | 9        | 9        | 9       | 8       | 9       | 8       | 8       | 8       | 8       | 8       | 8       | 8        | 7        |          |     |    |
|                   | 7       | 8       | 10      | 13      | 15      | 18      | 19      | 20      | 19      | 18       | 18       | 18       | 18      | 18      | 17      | 18      | 16      | 16      | 15      | 15      | 14      | 13       | 13       | 13       | 12      | 12      | 12      | 12      | 11      | 11      | 11      | 12      | 12      | 11       | 10       | 10       |     |    |
|                   | SSE     | S       | SE      | SSW     | ENE     | N       | N       | N       | N       | N        | NNW      | NNW      | NNW     | NNW     | NNW     | N       | N       | NNW     | N       | N       | N       | N        | N        | N        | WSW     | N       | N       | N       | N       | N       | NNE     | NNE     | NNE     | NNE      | NNE      | N        |     |    |
| Exxon 3           | 3       | 5       | 4       | 5       | 6       | 7       | 7       | 8       | 7       | 9        | 11       | 12       | 12      | 11      | 11      | 13      | 12      | 12      | 11      | 11      | 11      | 10       | 10       | 9        | 10      | 9       | 9       | 9       | 9       | 9       | 9       | 8       | 8       | 8        | 8        |          |     |    |
|                   | 7       | 9       | 10      | 13      | 16      | 18      | 19      | 22      | 19      | 19       | 18       | 18       | 19      | 18      | 18      | 18      | 16      | 16      | 16      | 15      | 15      | 14       | 13       | 13       | 13      | 13      | 13      | 13      | 12      | 12      | 12      | 13      | 11      | 11       | 10       | 10       |     |    |
|                   | WSW     | WNW     | E       | NNW     | SW      | WNW     | N       | N       | N       | NNW      | NNW      | NNW      | NNW     | NNW     | NNW     | NNW     | NNW     | NNW     | N       | N       | N       | N        | N        | NW       | N       | N       | N       | N       | N       | N       | NNE     | NNE     | NNE     | NNE      | NNE      | N        |     |    |
| Morgans Point     | 4       | 6       | 5       | 7       | 8       | 9       | 9       | 10      | 9       | 10       | 12       | 13       | 12      | 12      | 14      | 14      | 13      | 13      | 13      | 13      | 12      | 12       | 11       | 11       | 11      | 11      | 12      | 12      | 11      | 11      | 10      | 10      | 9       | 8        | 8        |          |     |    |
|                   | 6       | 9       | 10      | 13      | 16      | 19      | 19      | 23      | 20      | 19       | 19       | 19       | 19      | 18      | 18      | 18      | 17      | 17      | 17      | 16      | 16      | 15       | 15       | 14       | 14      | 15      | 14      | 14      | 14      | 13      | 13      | 13      | 12      | 11       | 11       |          |     |    |
|                   | SW      | WSW     | NE      | NNW     | NW      | SE      | N       | N       | N       | NNW      | NNW      | NNW      | NNW     | NNW     | NNW     | NNW     | NNW     | NNW     | N       | N       | N       | N        | NW       | S        | N       | N       | N       | N       | NNE     | NNE     | NNE     | NNE     | NNE     | NNE      | NNE      | NNE      |     |    |
| 75/76             | 6       | 8       | 8       | 8       | 12      | 13      | 13      | 14      | 13      | 12       | 14       | 15       | 15      | 15      | 15      | 16      | 17      | 16      | 16      | 16      | 16      | 15       | 15       | 15       | 15      | 15      | 16      | 15      | 15      | 15      | 15      | 14      | 13      | 13       | 11       | 9        | 8   |    |
|                   | 7       | 9       | 10      | 11      | 17      | 19      | 20      | 23      | 22      | 21       | 19       | 20       | 20      | 19      | 20      | 19      | 19      | 19      | 19      | 18      | 18      | 17       | 17       | 17       | 17      | 17      | 17      | 17      | 16      | 15      | 15      | 15      | 13      | 12       | 11       | 11       |     |    |
|                   | E       | E       | SSE     | W       | N       | NNE     | N       | N       | N       | N        | NNW      | NNW      | NNW     | NNW     | NNW     | NNW     | NNW     | N       | N       | N       | N       | N        | ESE      | N        | N       | N       | N       | NNE     | NNE     | NNE     | NNE     | NNE     | NNE     | NNE      | NNE      | NNE      |     |    |
| 63/64             | 7       | 9       | 10      | 9       | 13      | 15      | 15      | 16      | 15      | 14       | 16       | 16       | 17      | 17      | 17      | 17      | 18      | 18      | 18      | 18      | 18      | 18       | 18       | 17       | 17      | 18      | 18      | 18      | 18      | 18      | 17      | 16      | 15      | 12       | 10       | 9        |     |    |
|                   | 8       | 9       | 11      | 10      | 17      | 20      | 20      | 23      | 22      | 21       | 19       | 20       | 20      | 20      | 20      | 19      | 20      | 20      | 20      | 20      | 20      | 20       | 19       | 19       | 19      | 19      | 19      | 19      | 19      | 19      | 19      | 18      | 17      | 16       | 14       | 13       | 12  |    |
|                   | NNE     | N       | WNW     | SE      | N       | N       | NNW     | N       | N       | N        | NNW      | NNW      | NNW     | NNW     | NNW     | N       | N       | N       | N       | N       | N       | N        | SSW      | N        | N       | N       | N       | NNE     | NNE     | NNE     | NNE     | NNE     | NNE     | NNE      | NNE      | NNE      |     |    |
| 51/52             | 7       | 9       | 11      | 9       | 13      | 15      | 15      | 16      | 16      | 15       | 16       | 17       | 17      | 17      | 18      | 17      | 18      | 18      | 18      | 18      | 18      | 18       | 18       | 17       | 17      | 18      | 18      | 18      | 18      | 17      | 16      | 15      | 13      | 11       | 9        | 9        |     |    |
|                   | 8       | 9       | 11      | 11      | 15      | 20      | 20      | 22      | 23      | 22       | 20       | 21       | 20      | 20      | 21      | 19      | 20      | 20      | 20      | 20      | 20      | 20       | 19       | 19       | 18      | 19      | 19      | 19      | 19      | 19      | 18      | 17      | 14      | 13       | 12       | 12       |     |    |
|                   | NNE     | NNE     | NNW     | NNE     | N       | N       | SE      | N       | N       | N        | NNW      | NNW      | NNW     | NNW     | NNW     | N       | N       | N       | N       | N       | N       | N        | NNW      | ENE      | N       | N       | N       | N       | NNE     | NNE     | NNE     | NNE     | NNE     | NNE      | NNE      | NNE      |     |    |
| 37/38             | 7       | 9       | 11      | 10      | 13      | 16      | 15      | 16      | 16      | 16       | 17       | 17       | 18      | 18      | 18      | 17      | 18      | 18      | 18      | 18      | 18      | 18       | 17       | 18       | 17      | 17      | 17      | 17      | 17      | 17      | 18      | 18      | 18      | 17       | 15       | 13       | 12  | 10 |
|                   | 7       | 9       | 12      | 11      | 15      | 19      | 20      | 21      | 23      | 22       | 21       | 21       | 21      | 21      | 22      | 19      | 20      | 20      | 20      | 19      | 19      | 19       | 19       | 19       | 19      | 19      | 19      | 19      | 19      | 19      | 19      | 18      | 17      | 14       | 13       | 12       |     |    |
|                   | NNE     | NNE     | NNW     | NNE     | N       | N       | NNW     | N       | N       | N        | NNW      | NNW      | NNW     | NNW     | NNW     | N       | N       | N       | N       | N       | N       | N        | WSW      | N        | N       | N       | N       | NNE     | NNE     | NNE     | NNE     | NNE     | NNE     | NNE      | NNE      | NNE      |     |    |
| 25/26             | 5       | 8       | 10      | 10      | 12      | 15      | 14      | 15      | 16      | 16       | 16       | 17       | 17      | 18      | 18      | 16      | 17      | 17      | 17      | 16      | 16      | 16       | 16       | 16       | 15      | 16      | 16      | 16      | 16      | 16      | 15      | 14      | 12      | 11       | 10       | 10       |     |    |
|                   | 7       | 9       | 12      | 11      | 14      | 19      | 19      | 20      | 23      | 22       | 22       | 21       | 21      | 21      | 22      | 19      | 19      | 19      | 19      | 18      | 18      | 18       | 18       | 18       | 18      | 18      | 18      | 18      | 18      | 18      | 18      | 16      | 14      | 13       | 12       | 12       |     |    |
|                   | NNE     | NNE     | WSW     | ENE     | NNW     | N       | N       | W       | N       | N        | N        | N        | NNW     | NNW     | NNW     | NNW     | N       | N       | N       | N       | N       | N        | N        | ENE      | N       | N       | N       | N       | NNE     | NNE     | NNE     | NNE     | NNE     | NNE      | NNE      | NNE      |     |    |
| 11/12             | 4       | 7       | 8       | 10      | 11      | 13      | 13      | 13      | 14      | 15       | 15       | 16       | 17      | 17      | 17      | 16      | 16      | 16      | 16      | 16      | 16      | 16       | 16       | 16       | 15      | 16      | 16      | 16      | 16      | 16      | 15      | 15      | 14      | 12       | 11       | 10       |     |    |
|                   | 7       | 8       | 10      | 12      | 14      | 18      | 19      | 20      | 22      | 22       | 22       | 22       | 22      | 22      | 22      | 18      | 18      | 18      | 18      | 19      | 17      | 18       | 17       | 17       | 17      | 18      | 18      | 18      | 18      | 18      | 18      | 16      | 14      | 13       | 12       | 12       |     |    |
|                   | NNE     | NNE     | ENE     | S       | N       | ESE     | N       | SW      | N       | N        | NNW      | NNW      | NNW     | NNW     | NNW     | N       | N       | N       | N       | N       | N       | N        | N        | N        | N       | N       | N       | N       | NNE     | NNE     | NNE     | NNE     | NNE     | NNE      | NNE      | NNE      |     |    |
| 1 & 2 Bravo       | 6       | 5       | 9       | 12      | 12      | 16      | 16      | 17      | 17      | 17       | 17       | 18       | 18      | 20      | 19      | 18      | 19      | 19      | 19      | 19      | 19      | 19       | 19       | 19       | 19      | 19      | 19      | 19      | 19      | 19      | 19      | 17      | 15      | 13       | 11       | 11       |     |    |
|                   | 9       | 6       | 9       | 13      | 13      | 17      | 19      | 20      | 22      | 22       | 22       | 21       | 21      | 22      | 22      | 20      | 21      | 20      | 21      | 20      | 21      | 20       | 20       | 21       | 20      | 21      | 21      | 21      | 21      | 20      | 19      | 16      | 14      | 12       | 12       |          |     |    |
|                   | ENE     | NNE     | ESE     | WNW     | SSE     | N       | NE      | ENE     | N       | N        | N        | NNW      | NNW     | NNW     | NNW     | N       | N       | N       | N       | N       | N       | N        | N        | N        | N       | N       | N       | N       | NNE     | NNE     | NNE     | NNE     | NNE     | NNE      | NNE      | NNE      |     |    |

**NOTE: This is automated data that may/may not agree with the official BAM thinking that's found on the daily slides. This data should be used as a guide only**

# Houston Pilots: Sun. 11/26/2023



## Forecast Discussion

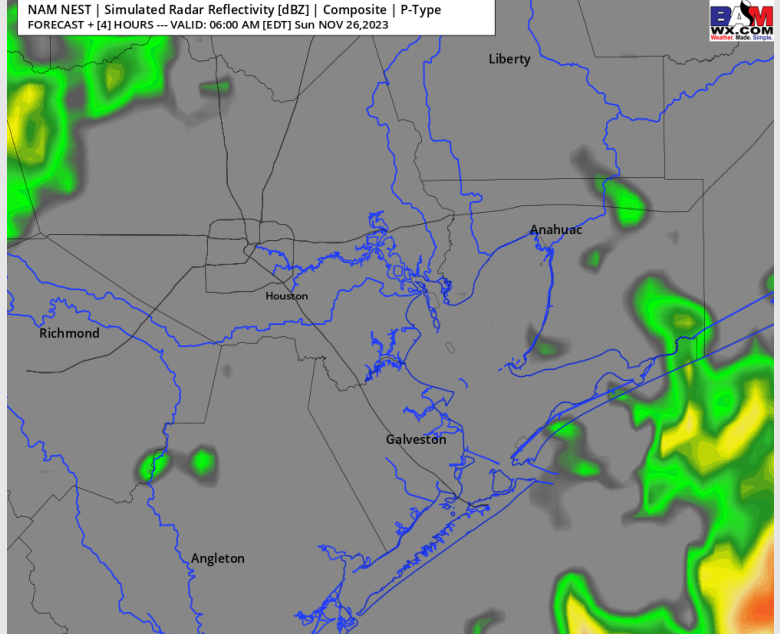
**Precip:** Best extent for scattered coverage (50% chance) arrives from 3 - 9 AM. Coverage then tapers off across all stations from 9 AM - 12 PM. The Boarding Station will be at risk of seeing drizzle last through 3 PM.

**Wind:** Winds favored to be out of the ESE as the day begins today, then will gradually shift to be out of the N moving into the late AM and through the rest of the day. **N of Morgan's Point:** Winds will begin at 3-8 kts, then increase to 10 - 15 kts by 10 AM. After 6 PM winds return to 3 - 8 kts. **S of Morgan's Point:** Winds will begin at 10 - 15 kts and follow a gradual increase in speed throughout the AM. By 10 AM winds will be at 18 - 23 kts. **Boarding Station** winds can increase more at 21 - 26 kts from 12 PM - 3 PM. Otherwise, winds will also remain at 18 - 23 kts. **Wind gusts of up to 26 - 28 kts are possible at the Boarding station in the early PM, and 22 - 26 kts for stations north of the Boarding Station.**

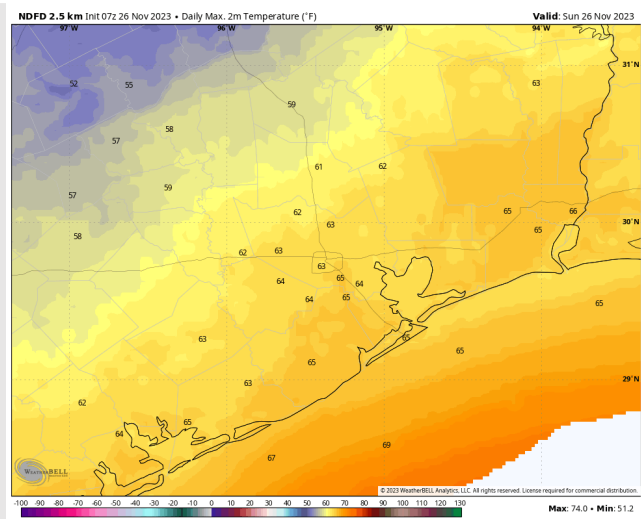
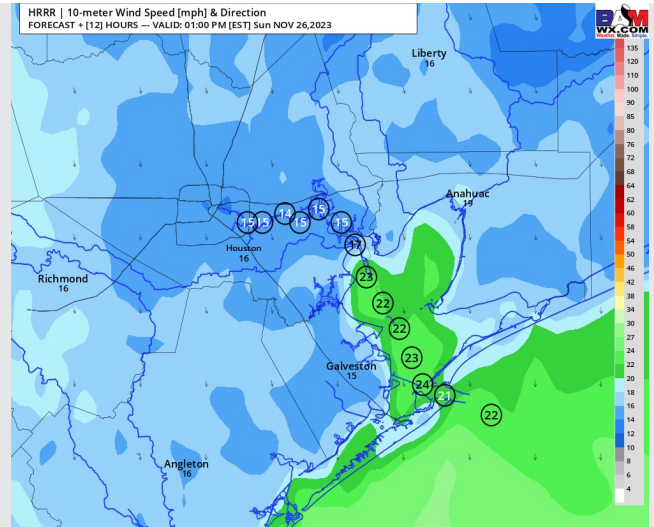
**High Temps:** **N of Morgan's Point:** Mid 60s F **S of Morgan's Point:** Mid to Upper 60s F.

**Visibility:** Not anticipating fog concerns for today, though some brief reduced visibilities under scattered showers will be possible.

## Precip Image: 5 AM CT



Wind Speed:  
12 PM CT



High Temps  
Today



# Houston Pilots: Mon. 11/27/2023



## Forecast Discussion

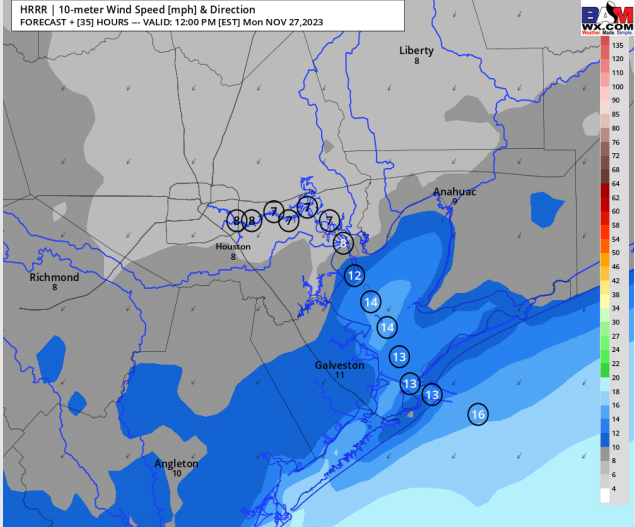
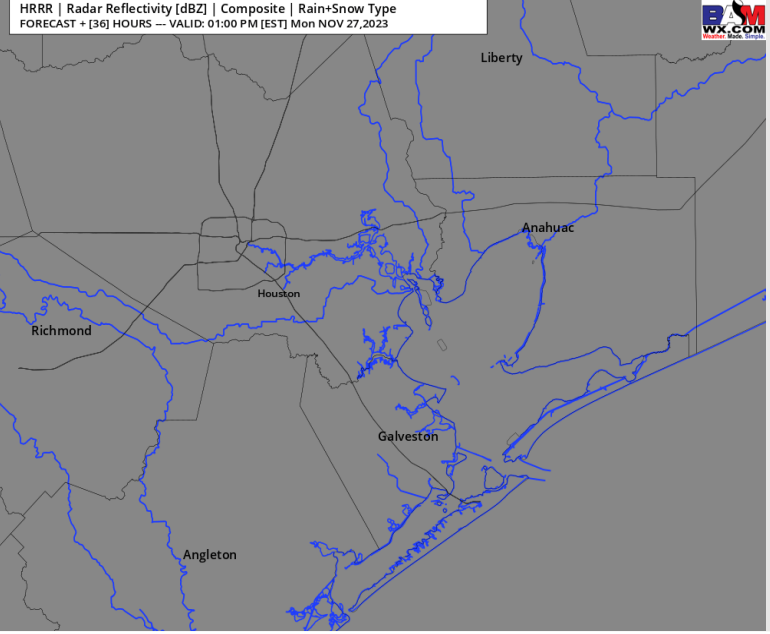
**Precip:** High pressure settles in Monday. Favoring dry conditions for the day.

**Wind:** Winds will be out of the N/NNE Monday. **N of Morgan's Point:** Sustained at 3 -8 kts. **S of Morgan's Point:** Winds will begin the day at 15-20 kts but will be on a declining trend in the AM. By 1 PM winds settle in at 8 - 13 kts. Boarding Station winds remain a touch higher at 10 -15 kts.

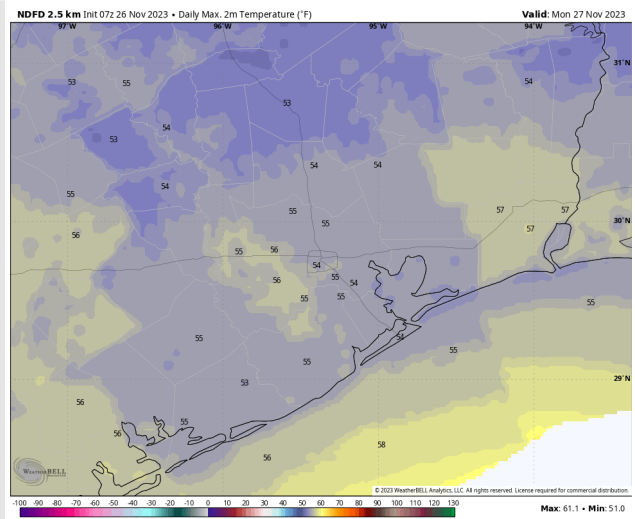
**High Temps:** **N of Morgan's Point:** Mid 50s F. **S of Morgan's Point:** Mid 50s F.

**Visibility:** No visibility concerns for today.

## Precip Image: 12 PM CT



Wind Speed:  
11 AM CT



High Temps  
Monday

# Houston Pilots: Tue. 11/28/2023



## Forecast Discussion

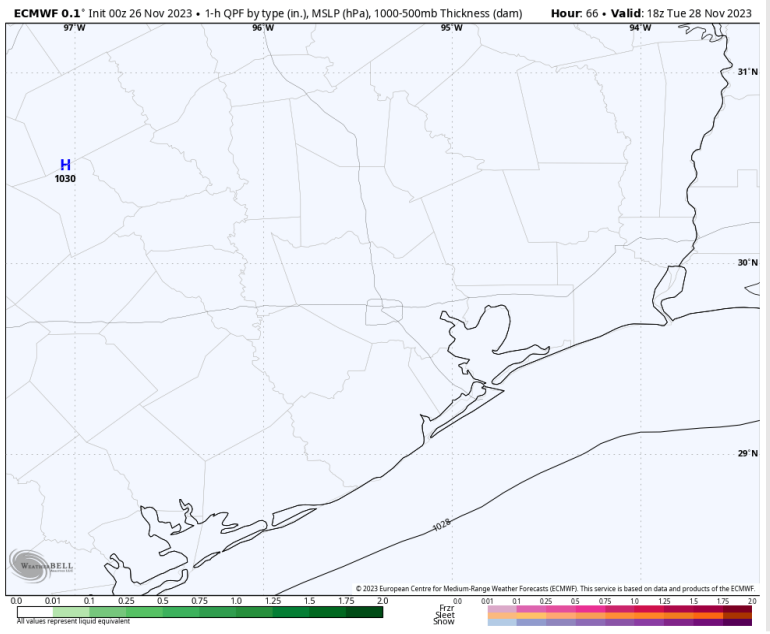
**Precip:** Dry conditions throughout the day Tuesday.

**Wind:** Winds will be sustained from the ENE for much of the day but will shift out of the ESE by 7 PM. **N of Morgan's Point:** Winds will sit at 3 – 8 kts throughout the day. **S of Morgan's Point:** Winds will begin the day at 9 – 14 kts and will begin gradually decreasing after 9 AM, setting at 3-8 kts by 5 PM. Winds of 7-12 kts will remain at the Boarding Station.

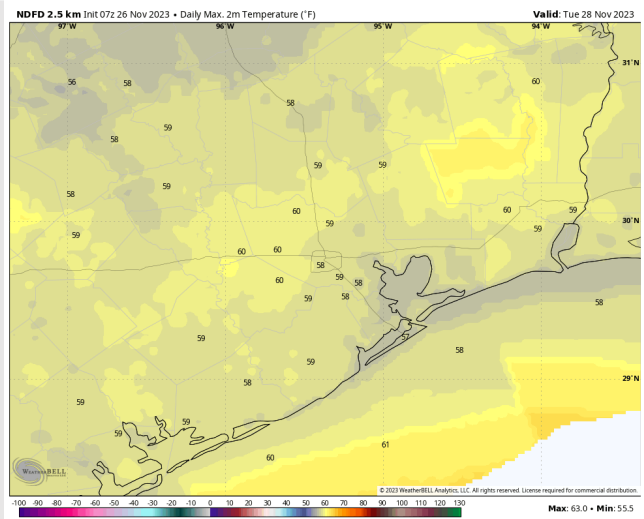
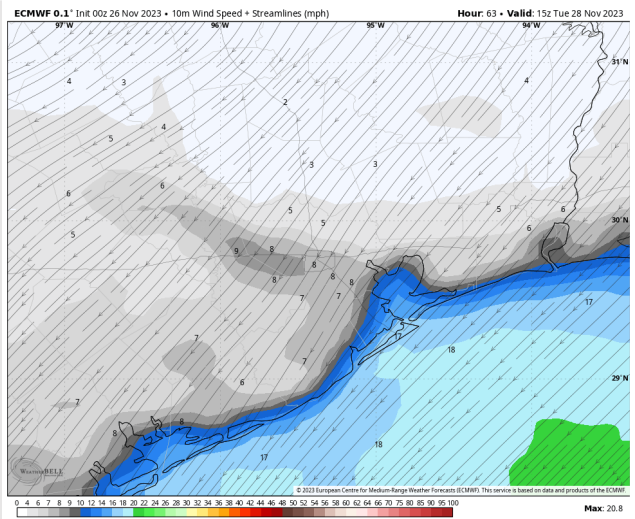
**High Temps:** **N of Morgan's Point:** Upper 50's. **S of Morgan's Point:** Upper 50's F

**Visibility:** No visibility concerns for Tuesday.

## Precip Image: 12 PM CT

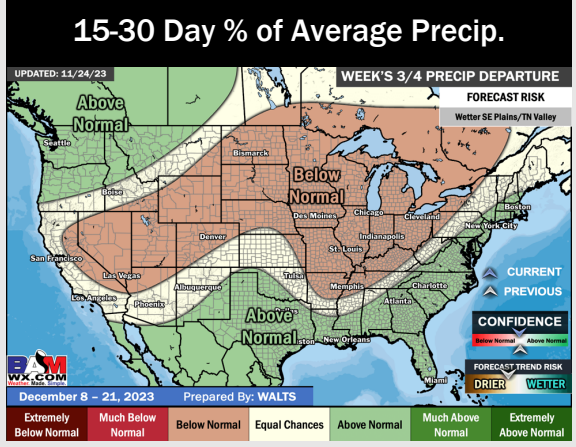
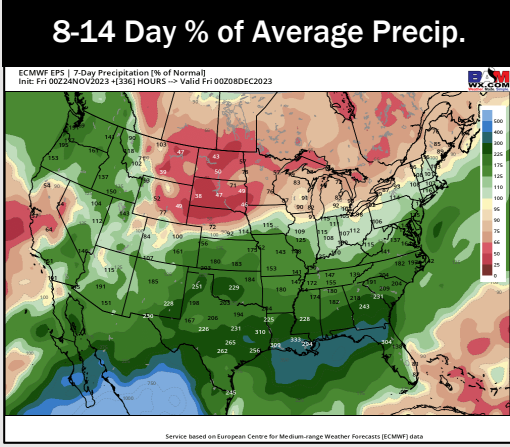
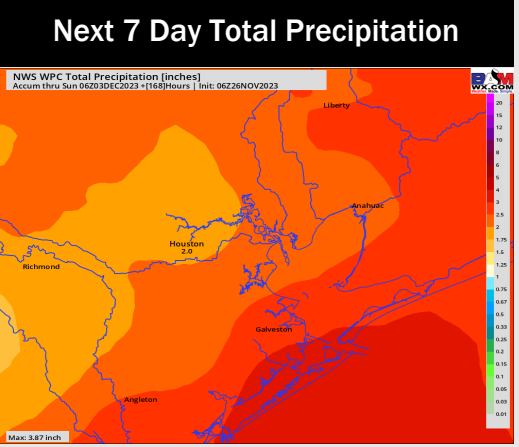
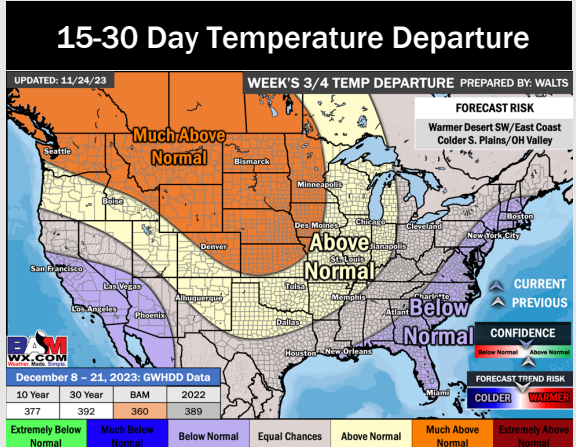
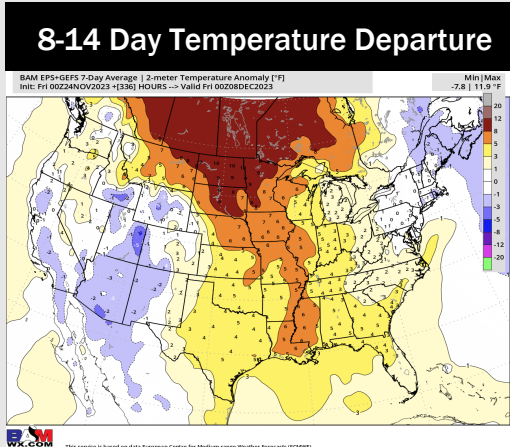
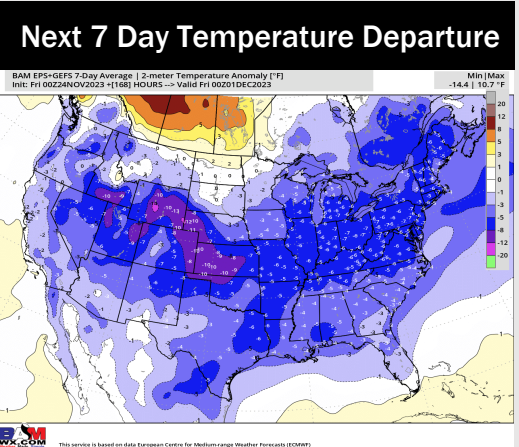


Wind Speed:  
9 AM CT



High Temps  
Tuesday

# Houston Pilots: 11/26/23



- Outside of rain chances today, next organized system looks to enter Thursday late AM. Colder than normal weather is expected this week following the last cold front.
- Above normal rainfall and above normal temperatures are expected into the week 2 timeframe.
- Seasonal temperatures and above normal chances for precipitation are favored in the weeks 3/4 timeframe.