

Houston Pilots Forecast Package



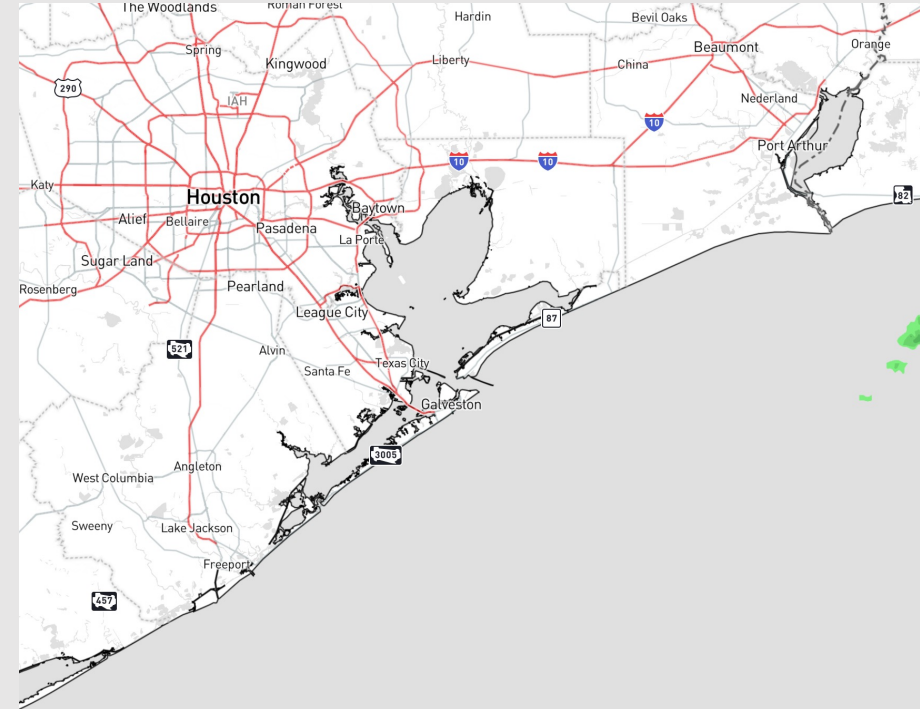
Updated: 4:30 AM CT

Friday, November 24, 2023

Forecaster: Alyssa Elliott

Weather Headlines

- Expected a dry day today with scattered rain chances working in over the weekend.
- Not anticipating any visibility concerns over the next few days.
- Watching the next few evenings for some gustier wind potential, especially for the Boarding Station.



Radar/NWS Alerts: 4:00 AM CT



As always, please do not hesitate to reach out to us with any forecast questions via the chat option on the Weather Porthole or our on-call number, **(317)-560-8122** press 1 for forecast questions.

Houston Pilots Extended Range Visibility Report



Monday 11/27/23

No fog concerns for Monday.

Forecast Confidence



Tuesday 11/28/23

No fog concerns Tuesday.

Forecast Confidence



Wednesday 11/29/23

No fog concerns Wednesday.

Forecast Confidence



Chance for Fog

Monday AM	Unlikely
Monday PM	Unlikely
Tuesday AM	Unlikely
Tuesday PM	Unlikely
Wednesday AM	Unlikely
Wednesday PM	Unlikely

Houston Pilots Visibility Chart (miles)



Time	Fri 3am	Fri 4am	Fri 5am	Fri 6am	Fri 7am	Fri 8am	Fri 9am	Fri 10am	Fri 11am	Fri 12pm	Fri 1pm	Fri 2pm	Fri 3pm	Fri 4pm	Fri 5pm	Fri 6pm	Fri 7pm	Fri 8pm	Fri 9pm	Fri 10pm	Fri 11pm	Sat 12am	Sat 1am	Sat 2am	Sat 3am	Sat 4am	Sat 5am	Sat 6am	Sat 7am	Sat 8am	Sat 9am	Sat 10am	Sat 11am	Sat 12pm	Sat 1pm	Sat 2pm
610 Bridge	10	10	10	10	10	10	10	10	10	10	10	10	10	10	10	10	10	10	10	10	10	10	10	10	10	10	10	10	10	10	10	10	10	10	10	10
Kinder 1	10	10	10	10	10	10	10	10	10	10	10	10	10	10	10	10	10	10	10	10	10	10	10	10	10	10	10	10	10	10	10	10	10	10	10	10
Greens Bayou	10	10	10	10	10	10	10	10	10	10	10	10	10	10	10	10	10	10	10	10	10	10	10	10	10	10	10	10	10	10	10	10	10	10	10	10
Shell Crude	10	10	10	10	10	10	10	10	10	10	10	10	10	10	10	10	10	10	10	10	10	10	10	10	10	10	10	10	10	10	10	10	10	10	10	10
Lynchburg Ferries	10	10	10	10	10	10	10	10	10	10	10	10	10	10	10	10	10	10	10	10	10	10	10	10	10	10	10	10	10	10	10	10	10	10	10	10
Exxon 3	10	10	10	10	10	10	10	10	10	10	10	10	10	10	10	10	10	10	10	10	10	10	10	10	10	10	10	10	10	10	10	10	10	10	10	10
Morgans Point	10	10	10	10	10	10	10	10	10	10	10	10	10	10	10	10	10	10	10	10	10	10	10	10	10	10	10	10	10	10	10	10	10	10	10	10
75/76	10	10	10	10	10	10	10	10	10	10	10	10	10	10	10	10	10	10	10	10	10	10	10	10	10	10	10	10	10	10	10	10	10	10	10	10
63/64	10	10	10	10	10	10	10	10	10	10	10	10	10	10	10	10	10	10	10	10	10	10	10	10	10	10	10	10	10	10	10	10	10	10	10	10
51/52	10	10	10	10	10	10	10	10	10	10	10	10	10	10	10	10	10	10	10	10	10	10	10	10	10	10	10	10	10	10	10	10	10	10	10	10
37/38	10	10	10	10	10	10	10	10	10	10	10	10	10	10	10	10	10	10	10	10	10	10	10	10	10	10	10	10	10	10	10	10	10	10	10	10
25/26	10	10	10	10	10	10	10	10	10	10	10	10	10	10	10	10	10	10	10	10	10	10	10	10	10	10	10	10	10	10	10	10	10	10	10	10
11/12	10	10	10	10	10	10	10	10	10	10	10	10	10	10	10	10	10	10	10	10	10	10	10	10	10	10	10	10	10	10	10	10	10	10	10	10
1 & 2 Bravo	10	10	10	10	10	10	10	10	10	10	10	10	10	10	10	10	10	10	10	10	10	10	10	10	10	10	10	10	10	10	10	10	10	10	10	10

NOTE: This is automated data that may/may not agree with the official BAM thinking that's found on the daily slides or special visibility report slides. This data should be used as a guide only

Houston Pilots Wind Chart



Forecast Confidence



Example

Sustained wind 13 Knots
Gusts 18 Knots
Wind from the N

WS: 13
G:18
N

Time Knots	Fri 3am	Fri 4am	Fri 5am	Fri 6am	Fri 7am	Fri 8am	Fri 9am	Fri 10am	Fri 11am	Fri 12pm	Fri 1pm	Fri 2pm	Fri 3pm	Fri 4pm	Fri 5pm	Fri 6pm	Fri 7pm	Fri 8pm	Fri 9pm	Fri 10pm	Fri 11pm	Sat 12am	Sat 1am	Sat 2am	Sat 3am	Sat 4am	Sat 5am	Sat 6am	Sat 7am	Sat 8am	Sat 9am	Sat 10am	Sat 11am	Sat 12pm	Sat 1pm	Sat 2pm	
610 Bridge	3	3	3	3	3	4	2	3	4	6	6	6	6	6	5	5	5	4	5	4	4	4	4	4	4	4	4	4	6	7	7	7	7	7	7		
	7	6	6	6	6	6	6	5	4	7	8	9	9	8	9	8	7	7	7	7	6	7	7	6	6	6	6	6	7	8	10	10	10	10	10	10	
	ENE	NE	NE	NE	NE	NE	NE	NE	NE	NNE	NNE	NNE	NNE	NE	NE	NE	NE	NE	NE	NE	NE	NE	NE	NE	NE	NE	NE	ENE	ENE	ENE	E	E	E	E	E		
Kinder 1	3	2	3	3	3	3	2	3	4	6	6	6	6	6	5	5	5	4	5	4	4	4	4	4	4	4	4	6	7	7	7	7	7	7			
	7	6	6	6	6	6	5	4	7	7	9	9	9	8	9	8	7	7	7	6	7	7	6	6	6	6	6	7	8	10	10	10	9	10	10		
	ENE	NE	NE	NE	NE	NE	NE	NE	NE	NNE	NNE	NNE	NE	NE	NE	NE	NE	NE	NE	NE	NE	NE	NE	NE	NE	NE	NE	ENE	ENE	ENE	E	E	E	E	E		
Greens Bayou	3	2	3	3	3	4	2	3	4	5	6	6	6	6	5	5	5	4	5	4	4	4	4	4	4	4	4	5	7	7	7	7	7	7			
	7	6	6	6	6	6	5	5	8	7	9	9	9	8	9	8	7	7	7	7	6	7	6	6	6	6	6	6	7	8	10	9	9	9	9	10	
	ENE	NE	NE	NE	NE	NE	NE	NE	NE	NNE	NNE	NNE	NNE	NE	NE	NE	NE	NE	NE	NE	NE	NE	NE	NE	NE	NE	NE	ENE	ENE	ENE	E	E	E	E	E		
Shell Crude	3	2	3	3	3	4	2	3	4	5	6	6	6	5	4	5	5	5	5	5	4	5	5	5	4	5	5	5	6	7	7	7	7	7	7		
	7	6	6	6	6	6	5	5	8	7	8	8	8	8	8	8	7	7	7	7	7	7	7	6	6	6	6	7	8	10	9	9	9	9	10		
	ENE	NE	NE	NE	NE	NE	NE	NE	NE	NNE	NNE	NNE	NNE	NE	NE	NE	NE	NE	NE	NE	NE	NE	NE	NE	NE	NE	NE	ENE	ENE	ENE	E	E	E	E	E		
Lynchburg Ferries	3	2	3	3	3	4	3	3	4	5	6	6	6	5	4	5	5	5	5	5	5	5	5	5	5	5	5	5	6	7	7	7	7	7	8		
	7	7	6	6	6	7	5	5	8	7	8	8	8	8	8	8	8	7	7	7	7	7	7	7	6	6	7	8	10	9	9	9	9	10			
	ENE	ENE	NE	NE	NE	NE	NE	NE	NNE	NNE	NNE	NNE	NNE	NE	NE	NE	NE	NE	NE	NE	NE	NE	NE	NE	NE	NE	NE	ENE	ENE	ENE	E	E	E	E	E		
Exxon 3	3	3	3	3	3	4	3	3	4	5	6	6	6	5	4	6	6	6	6	6	5	6	6	6	6	6	6	6	6	7	8	8	8	8	8	8	
	8	8	8	7	7	8	6	5	7	7	8	8	8	7	8	8	8	8	8	8	8	7	8	8	8	7	7	8	9	10	9	9	9	9	10		
	ENE	ENE	NE	NE	NE	NE	NE	NE	NNE	NNE	NNE	NNE	NNE	NNE	NE	NE	NE	NE	NE	NE	NE	NE	NE	NE	NE	NE	NE	ENE	ENE	ENE	E	E	E	E	E		
Morgans Point	5	5	5	5	4	5	4	3	4	5	5	5	6	5	5	7	7	7	7	7	7	7	7	8	7	7	8	8	8	9	9	8	8	8	9		
	9	9	9	8	8	8	6	5	7	7	7	7	8	8	8	9	9	9	9	9	9	9	9	9	9	9	9	9	10	11	10	10	10	11	11		
	E	E	ENE	ENE	NE	NE	NE	NE	NNE	NNE	NNE	NNE	NNE	NE	NE	NE	NE	NE	NE	NE	NE	NE	NE	NE	NE	NE	NE	ENE	ENE	ENE	E	E	E	E	E		
75/76	9	9	8	7	7	7	6	5	6	6	6	6	7	6	9	10	10	10	10	10	10	10	10	11	11	12	11	11	11	11	11	11	11	11	11		
	9	10	9	8	8	8	7	6	7	8	8	8	8	9	9	11	11	11	11	11	11	11	12	12	13	12	13	13	13	13	13	13	12	11	11	12	12
	E	E	E	ENE	ENE	NE	NE	NE	NE	NE	NE	NE	NE	NE	NE	NE	NE	NE	NE	NE	NE	NE	ENE	ENE	ENE	ENE	ENE	ENE	ENE	ENE	ENE	ENE	ENE	ENE	E	E	
63/64	9	9	9	8	7	8	7	6	7	8	8	8	7	8	10	10	10	10	10	10	11	12	12	13	13	13	13	13	13	12	11	10	9	10	11		
	10	10	9	8	8	8	8	7	8	9	10	10	10	10	9	11	11	11	11	11	12	13	13	13	14	14	14	14	14	13	13	11	11	12	12	12	
	E	E	E	ENE	ENE	NE	NE	NE	NNE	NNE	NNE	NNE	NNE	NE	NE	NE	NE	NE	NE	NE	ENE	ENE	ENE	ENE	ENE	ENE	ENE	ENE	ENE	ENE	ENE	ENE	ENE	ENE	E	E	
51/52	9	9	8	7	7	9	8	6	7	9	9	9	7	7	8	10	10	10	10	10	10	10	11	11	12	12	12	12	12	12	12	12	12	12	12		
	9	10	9	8	8	9	8	7	8	9	11	11	10	9	9	11	11	11	11	11	11	12	12	13	13	13	13	14	14	13	12	12	12	12	12	13	
	E	E	E	ENE	NE	NE	NE	NE	NNE	NNE	NNE	NNE	NNE	NE	ENE	NE	NE	NE	NE	NE	ENE	ENE	ENE	ENE	ENE	ENE	ENE	ENE	ENE	ENE	ENE	ENE	ENE	ENE	E	E	
37/38	8	9	8	7	7	9	8	7	7	8	10	9	8	7	8	9	9	9	9	9	10	10	10	11	11	11	11	12	12	12	12	12	12	12	11	11	12
	9	10	9	8	7	9	8	7	8	9	11	10	9	9	9	10	10	10	10	10	11	12	11	12	12	13	13	13	13	13	13	13	13	13	13	13	13
	ENE	E	E	ENE	NE	NE	NE	NE	NNE	NNE	NNE	NNE	NNE	NE	NE	NE	NE	NE	NE	NE	ENE	ENE	ENE	ENE	ENE	ENE	ENE	ENE	ENE	ENE	ENE	ENE	ENE	ENE	E	E	
25/26	8	8	7	7	6	8	8	7	7	8	9	8	7	7	8	8	8	8	8	9	9	9	10	10	10	10	10	10	11	11	11	11	11	11	11	11	
	10	10	9	8	7	9	9	8	8	9	10	9	9	7	9	10	10	10	10	10	10	10	11	11	11	11	11	11	11	12	12	12	12	12	12	12	
	ENE	ENE	E	ENE	NE	NE	NE	NE	NNE	NNE	NNE	NNE	NNE	NE	NE	ENE	NE	NE	NE	NE	ENE	ENE	ENE	ENE	ENE	ENE	ENE	ENE	ENE	ENE	ENE	ENE	ENE	ENE	E	E	
11/12	8	8	8	7	6	8	8	7	7	8	8	7	7	7	8	9	9	9	9	9	9	10	10	10	10	10	10	10	11	11	11	11	11	11	11	11	
	10	10	9	8	7	9	9	8	8	9	10	8	8	8	9	10	10	10	10	10	10	10	10	10	10	10	10	10	10	11	11	11	11	11	11	11	
	ENE	E	E	ENE	NE	NNE	NNE	NE	NNE	NNE	NNE	NNE	NNE	NE	ENE	ENE	ENE	ENE	ENE	ENE	ENE	ENE	ENE	ENE	ENE	ENE	ENE	ENE	ENE	ENE	ENE	ENE	ENE	ENE	E	E	
1 & 2 Bravo	11	11	9	9	8	9	10	10	9	10	10	8	7	7	8	11	11	11	12	12	12	13	13	13	13	13	13	13	14	14	14	14	14	14	14		
	11	11	9	9	8	9	10	10	9	11	11	9	9	8	9	12	12	13	13	13	13	13	14	14	14	14	14	14	14	15	15	15	15	15	15	15	
	ENE	E	ENE	ENE	ENE	NE	NNE	NNE	NNE	NNE	NNE	NNE	NE	NE	ENE	ENE	ENE	ENE	ENE	ENE	ENE	ENE	ENE	ENE	ENE	ENE	ENE	ENE	ENE	ENE	ENE	ENE	ENE	ENE	E	E	

NOTE: This is automated data that may/may not agree with the official BAM thinking that's found on the daily slides. This data should be used as a guide only

Houston Pilots: Fri. 11/24/2023



Forecast Discussion

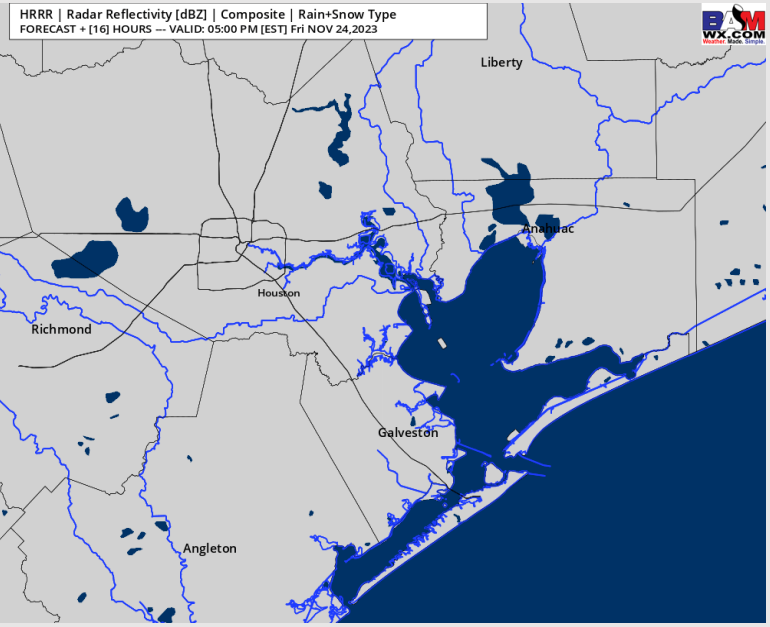
Precip: Favoring dry conditions today.

Wind: Winds will be out of the ENE today. **N of Morgan's Point:** Winds will remain at 3 – 8 kts throughout much of the AM, then will reach 5 – 10 kts from 12 PM - 5 PM-CT, before decreasing back to 3 – 8 kts for the evening. **S of Morgan's Point:** Winds will sit at 8 – 13 kts throughout much of the day until ~6 PM. Then winds will increase to 5 – 20 for the remained of the PM. **Gusts of 18 – 22 knots cannot be ruled out after 7 PM.**

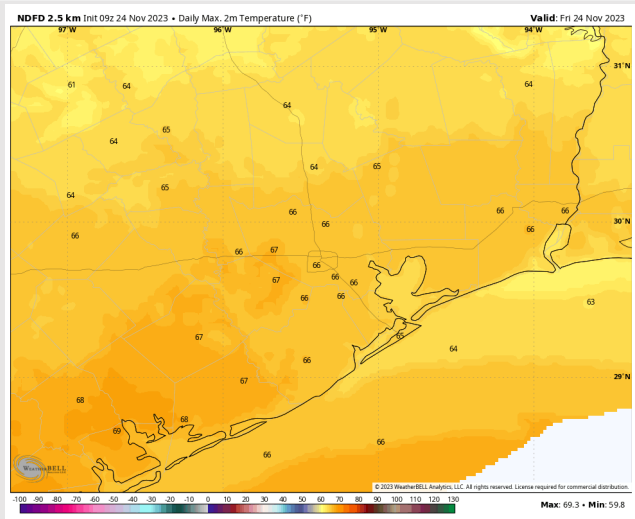
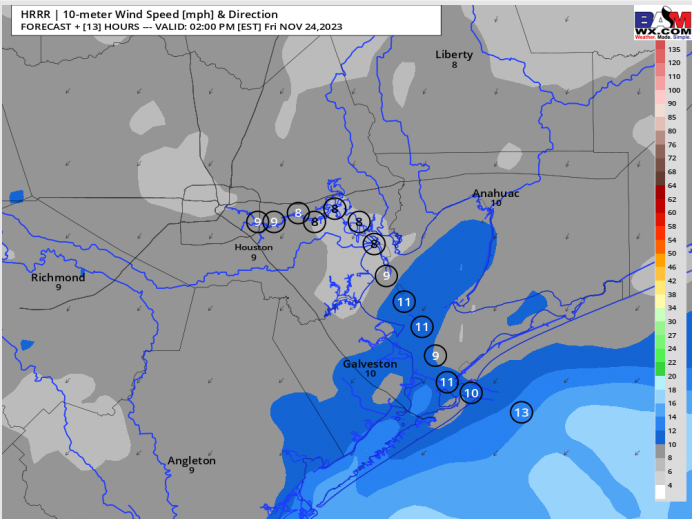
High Temps: **N of Morgan's Point:** Mid 60s F. **S of Morgan's Point:** Low to Mid 60s F.

Visibility: No visibility concerns for today.

Precip Image: 4 PM CT



**Wind Speed:
1 PM CT**



**High Temps
Today**

Houston Pilots: Sat. 11/25/2023



Forecast Discussion

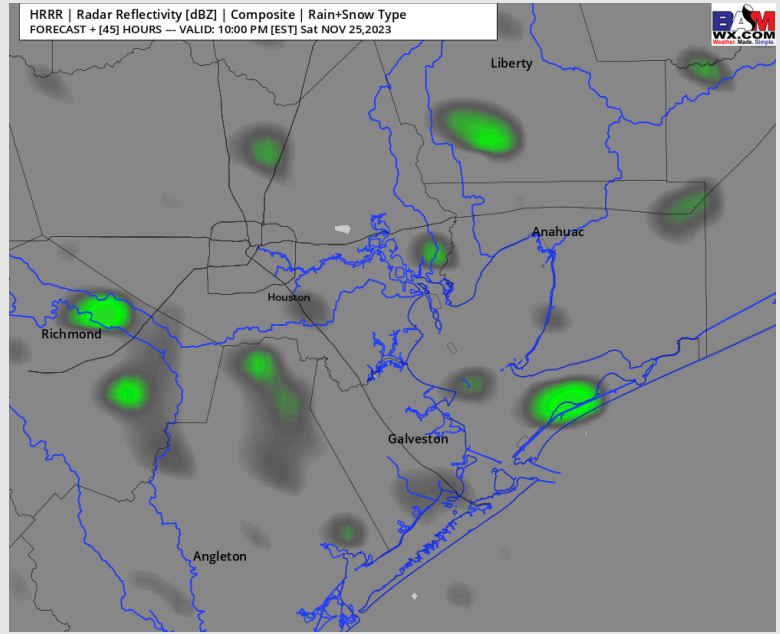
Precip: Scattered, light showers will be possible for all stations after 6 – 7 PM CT. Dry conditions favored prior to that.

Wind: ENE winds will gradually shift ESE into the afternoon/ evening hours of Saturday. **N of Morgan's Point:** Winds will sit at 3 – 8 kts for the entire day. **S of Morgan's Point:** Winds will be 10 – 16 kts through the entire day. **Wind gusts of 17 – 22 kts possible for stations S of Morgan's Point, especially for the Boarding Station.**

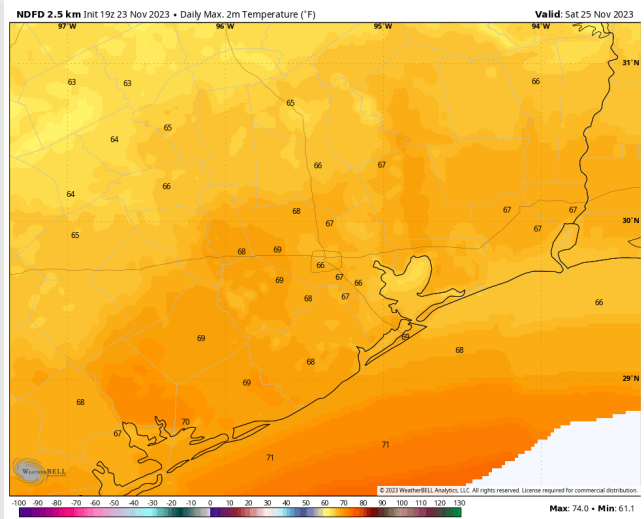
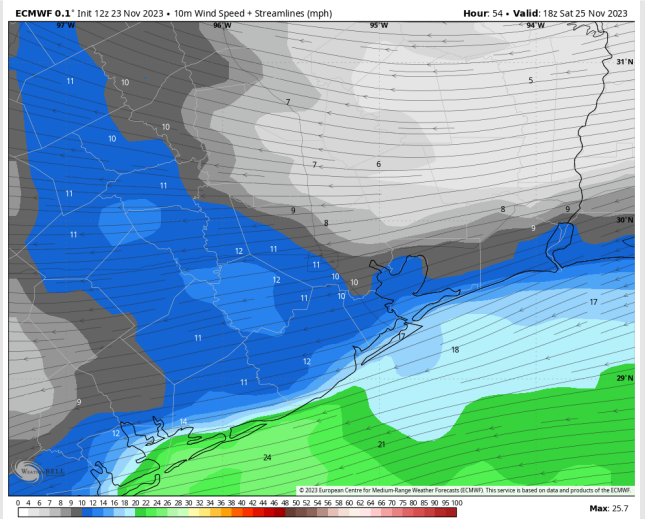
High Temps: **N of Morgan's Point:** Mid 60's. **S of Morgan's Point:** Mid to high 60's F

Visibility: No visibility concerns for Saturday.

Precip Image: 9 PM CT



Wind Speed:
12 PM CT



High Temps
Saturday

Houston Pilots: Sun. 11/26/2023



Forecast Discussion

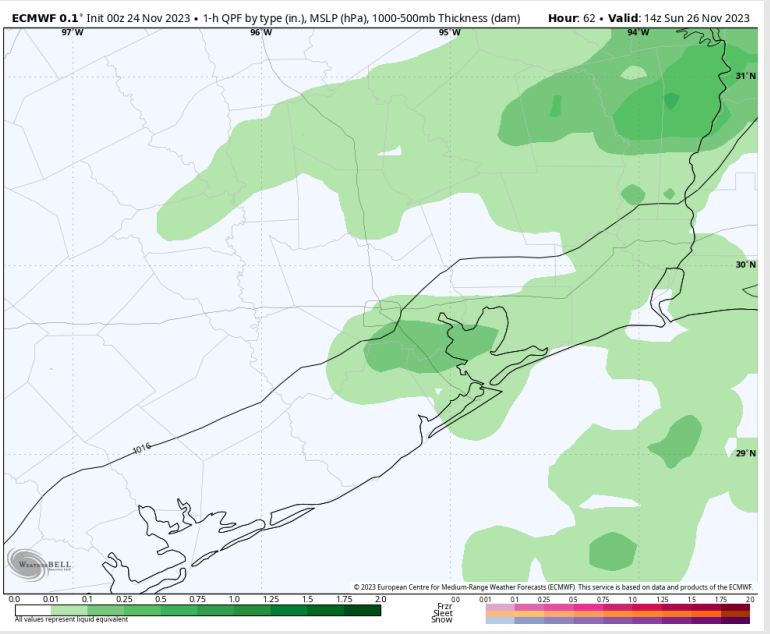
Precip: Anticipating scattered showers throughout the morning Sunday with conditions drying up after 12 PM-CT and for the rest of the evening.

Wind: Winds favored to be out of the E as the day begins Sunday, then will gradually shift to be out of the NNW moving into the late AM and through the rest of the day. **N of Morgan's Point:** Winds will begin on the lighter side of 3 – 8 kts until 7 AM. Then increase to 10 – 15 kts and remain there for the day. **S of Morgan's Point:** Winds will begin at 8 – 13 kts and then increase through the late AM to 15 – 20 kts. After 3 PM, winds then increase to 18 – 23 kts. **Gusts near the Boarding Station may at times reach to 30 kts gusts in the later PM.**

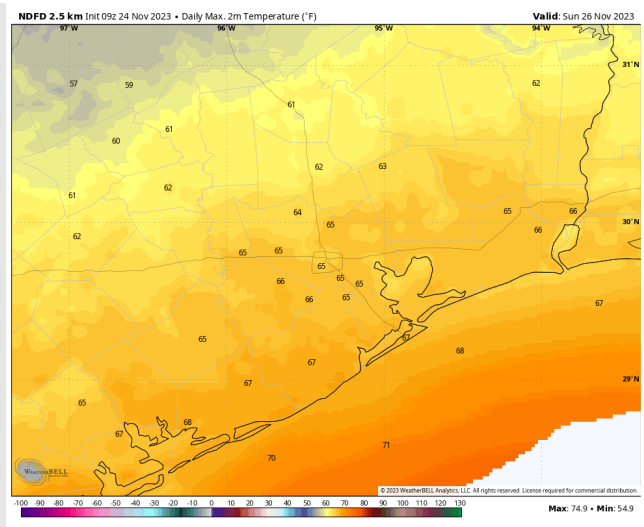
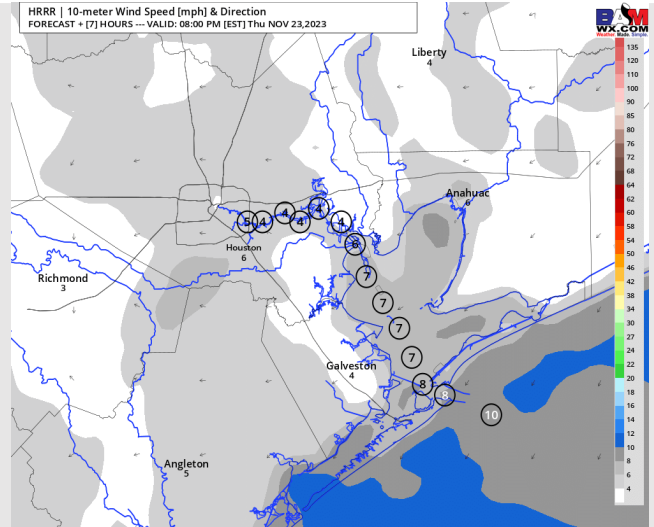
High Temps: **N of Morgan's Point:** Mid 60s F **S of Morgan's Point:** Mid to Upper 60s F.

Visibility: Not anticipating visibility concerns today.

Precip Image: 8 AM CT

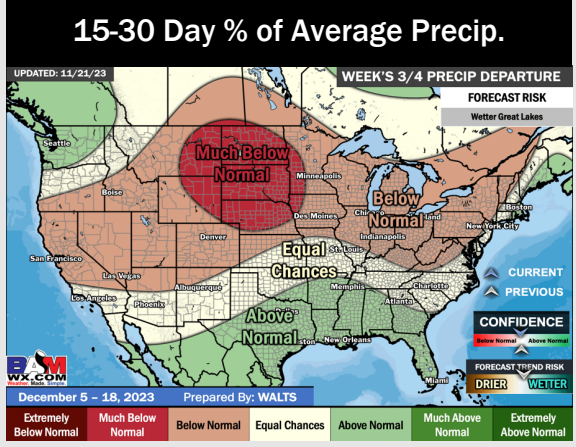
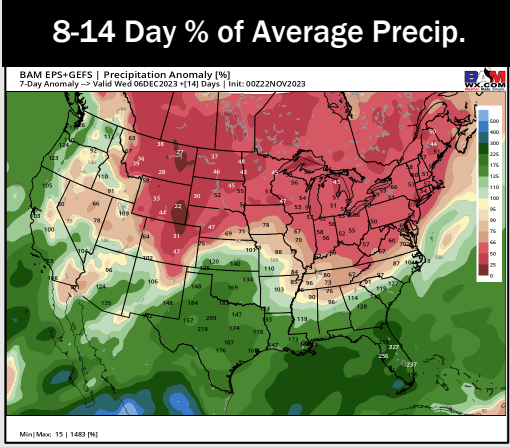
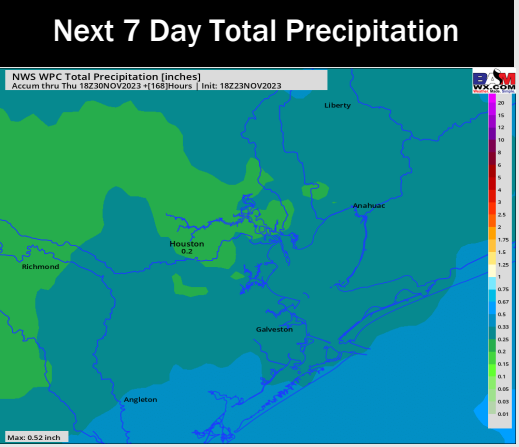
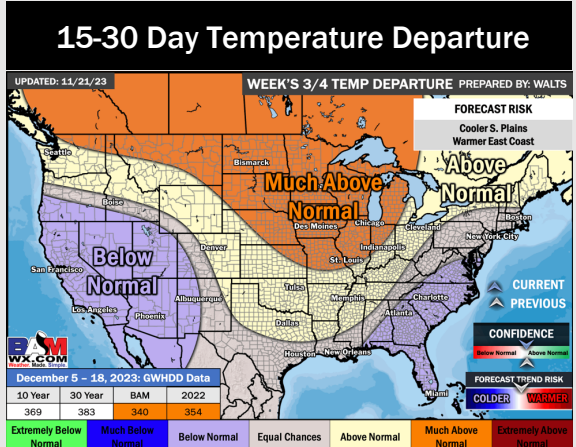
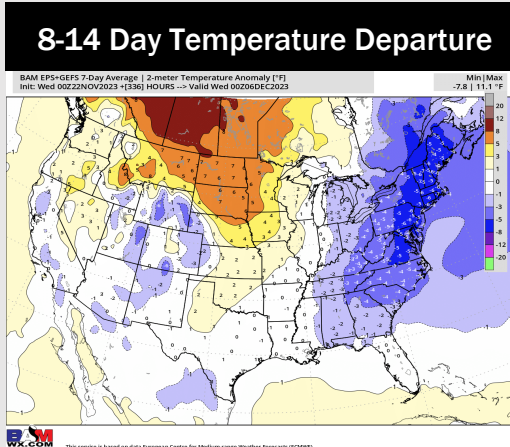
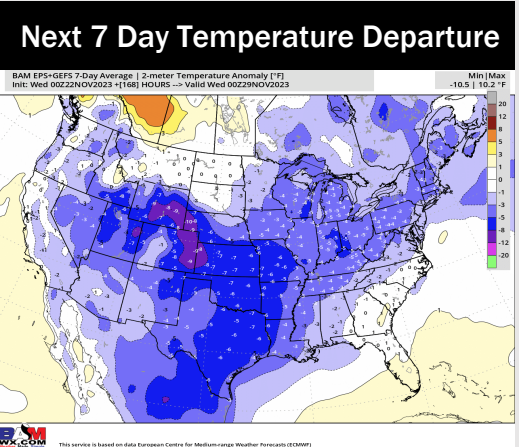


Wind Speed:
7 PM CT



High Temps
Sunday

Houston Pilots: 11/24/23



- The next best shot of rain pushes in Saturday night into Sunday. Colder than normal weather is expected this week following the last cold front.
- Above normal rainfall and seasonal temperatures are expected into the week 2 timeframe.
- Seasonal temperatures and above normal chances for precipitation are favored in the weeks 3/4 timeframe.