

# Houston Pilots Forecast Package



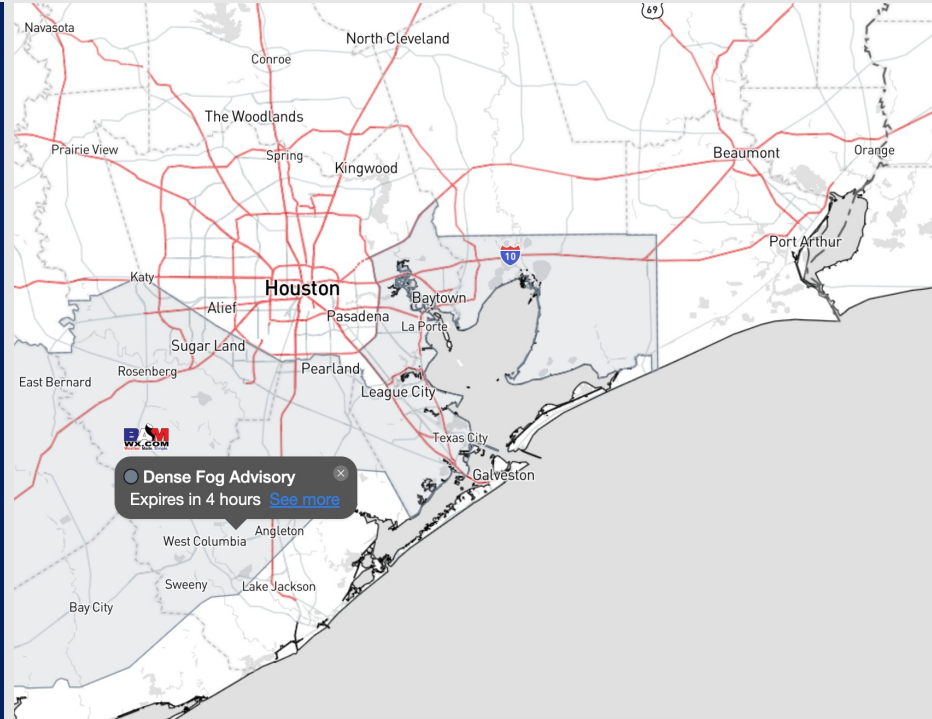
Updated: 5:30 AM CT

Sunday, November 19, 2023

Forecaster: Will Danby

## Weather Headlines

- Lighter rain showers/chances will be present today and tomorrow
- Winds will be on the calmer side for the rest of the weekend. Winds become more elevated Monday PM and into Tuesday behind a cold front.
- Not anticipating any visibility concerns over the next few days.
- A few pockets of patchy fog at Exxon 3/Morgan's Point possible through 8 AM CT. Check Sunday slide for details



**Radar/NWS Alerts: 5:24 AM CT**



As always, please do not hesitate to reach out to us with any forecast questions via the chat option on the Weather Porthole or our on-call number, **(317)-560-8122** press 1 for forecast questions.

# Houston Pilots Extended Range Visibility Report



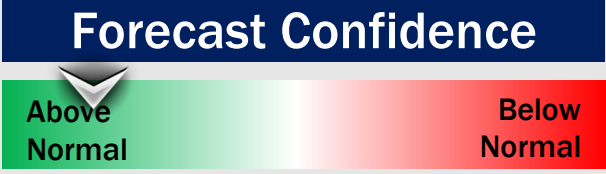
## Wednesday 11/22/23

No visibility concerns Tuesday. A cold front will have winds from the NW in the AM.



## Thursday 11/23/23

No visibility concerns Wednesday.



## Friday 11/24/23

No visibility concerns Thursday.



## Chance for Fog

Wednesday AM	Unlikely
Wednesday PM	Unlikely
Thursday AM	Unlikely
Thursday PM	Unlikely
Friday AM	Unlikely
Friday PM	Unlikely

# Houston Pilots Visibility Chart (miles)



Time	Sun 5am	Sun 6am	Sun 7am	Sun 8am	Sun 9am	Sun 10am	Sun 11am	Sun 12pm	Sun 1pm	Sun 2pm	Sun 3pm	Sun 4pm	Sun 5pm	Sun 6pm	Sun 7pm	Sun 8pm	Sun 9pm	Sun 10pm	Sun 11pm	Mon 12am	Mon 1am	Mon 2am	Mon 3am	Mon 4am	Mon 5am	Mon 6am	Mon 7am	Mon 8am	Mon 9am	Mon 10am	Mon 11am	Mon 12pm	Mon 1pm	Mon 2pm	Mon 3pm	Mon 4pm				
610 Bridge	6	7	7	10	10	10	10	10	10	10	10	10	10	10	10	10	10	10	10	10	10	10	10	8	6	6	6	6	10	10	10	10	10	10	10	10	10	10		
Kinder 1	6	7	7	10	10	10	10	10	10	10	10	10	10	10	10	10	10	10	10	10	10	10	10	8	6	6	6	6	10	10	10	10	10	10	10	10	10	10		
Greens Bayou	7	7	7	10	10	10	10	10	10	10	10	10	10	10	10	10	10	10	10	10	10	10	10	8	7	6	6	7	10	10	10	10	10	10	10	10	10	10		
Shell Crude	6	6	7	9	10	10	10	10	10	10	10	10	10	10	10	10	10	10	10	10	10	10	10	8	8	8	8	7	10	10	10	10	10	10	10	10	10	10		
Lynchburg Ferries	6	6	6	8	10	10	10	10	10	10	10	10	10	10	10	10	10	10	10	10	10	10	10	8	8	8	8	7	9	10	10	10	10	10	10	10	10	10		
Exxon 3	5	6	6	8	10	10	10	10	10	10	10	10	10	10	10	10	10	10	10	10	8	8	9	8	8	8	8	8	8	8	7	9	10	10	10	10	10	10	10	
Morgans Point	5	6	7	9	10	10	10	10	10	10	10	10	10	10	10	10	10	10	10	9	8	8	9	8	8	8	8	8	7	9	10	10	10	10	10	10	10	9	10	
75/76	6	8	9	10	10	10	10	10	10	10	10	10	10	10	10	10	10	10	10	9	8	8	9	9	9	8	9	9	9	10	10	10	10	10	10	10	10	10	10	
63/64	8	10	10	10	10	10	10	10	10	10	10	10	10	10	10	10	10	10	10	10	8	8	10	10	10	10	10	10	9	10	10	10	10	10	10	10	10	10	10	
51/52	10	10	10	10	10	10	10	10	10	10	10	10	10	10	10	10	10	10	10	10	9	8	10	10	10	10	10	10	10	10	10	10	10	10	10	10	10	10	10	
37/38	10	10	10	10	10	10	10	10	10	10	10	10	10	10	10	10	10	10	10	10	10	8	10	10	10	10	10	10	10	10	10	10	10	10	10	10	10	10	10	10
25/26	10	10	10	10	10	10	10	10	10	10	10	10	10	10	10	10	10	10	10	10	10	8	10	10	10	10	10	10	10	10	10	10	10	10	10	10	10	10	10	10
11/12	10	10	10	10	10	10	10	10	10	10	10	10	10	10	10	10	10	10	10	10	10	8	10	10	10	10	10	10	10	10	10	10	10	10	10	10	10	10	10	10
1 & 2 Bravo	10	10	10	10	10	10	10	10	10	10	10	10	10	10	10	10	10	10	10	9	9	8	9	9	9	9	9	9	9	9	9	9	9	9	9	9	9	9	9	9

**NOTE: This is automated data that may/may not agree with the official BAM thinking that's found on the daily slides or special visibility report slides. This data should be used as a guide only**

# Houston Pilots Wind Chart



## Forecast Confidence



Sustained wind 13 Knots  
Gusts 18 Knots  
Wind from the N

## Example

WS: 13  
G:18  
N

Time Knots	Sun 5am	Sun 6am	Sun 7am	Sun 8am	Sun 9am	Sun 10am	Sun 11am	Sun 12pm	Sun 1pm	Sun 2pm	Sun 3pm	Sun 4pm	Sun 5pm	Sun 6pm	Sun 7pm	Sun 8pm	Sun 9pm	Sun 10pm	Sun 11pm	Mon 12am	Mon 1am	Mon 2am	Mon 3am	Mon 4am	Mon 5am	Mon 6am	Mon 7am	Mon 8am	Mon 9am	Mon 10am	Mon 11am	Mon 12pm	Mon 1pm	Mon 2pm	Mon 3pm	Mon 4pm		
610 Bridge	2	2	2	2	5	7	7	8	6	8	7	7	7	3	4	6	6	6	6	6	6	6	6	6	6	5	5	6	8	9	10	11	12	11	12	11	11	11
	6	6	7	7	9	11	10	11	9	11	11	13	14	12	13	9	9	9	9	10	10	6	6	7	6	6	5	8	9	11	14	15	17	18	17	18	16	
	ENE	ENE	ENE	E	E	ESE	SE	SE	SE	SE	SE	SE	SE	ESE	ESE	SE	SE	SE	SSE	SSE	SSE	SSE	SSE	SSE	SSE	SSE	S	S	S	SSW	SSW	SSW	SW	SW	WSW			
Kinder 1	2	2	2	3	5	7	7	8	6	8	7	7	7	3	4	6	6	6	6	6	6	6	6	6	5	5	6	7	9	10	11	12	11	11	11	11	11	
	5	6	8	8	10	11	10	11	9	11	11	13	14	12	12	9	9	9	9	10	9	10	9	8	8	8	8	9	11	14	15	17	18	17	17	16		
	ENE	ENE	E	E	E	ESE	SE	SE	SE	SE	SE	SE	SE	ESE	ESE	SE	SE	SE	SSE	SSE	SSE	SSE	SSE	SSE	SSE	SSE	S	S	S	SSW	SSW	SSW	SW	SW	SW			
Greens Bayou	2	2	2	3	5	7	7	8	7	7	7	7	7	4	3	6	6	6	6	6	6	6	6	6	5	5	6	7	9	10	11	11	11	11	11	11	11	
	6	7	8	8	10	11	11	11	9	12	12	13	15	12	11	9	9	9	9	9	9	9	9	9	8	8	8	9	11	14	15	17	17	17	17	16		
	E	E	E	E	ESE	ESE	SE	SE	SE	SE	SE	SE	SE	ESE	ESE	SE	SE	SE	SSE	SSE	SSE	SSE	SSE	SSE	SSE	SSE	S	S	S	SSW	SSW	SSW	SW	SW	SW			
Shell Crude	2	2	2	3	5	7	7	8	7	7	7	7	7	4	4	6	6	6	6	6	6	6	6	6	5	5	6	8	9	10	10	11	11	11	11	11	11	
	6	7	8	9	11	11	11	11	9	12	12	13	14	13	11	9	9	9	9	9	9	9	9	9	8	8	8	9	11	14	15	17	17	17	17	16		
	ENE	E	E	E	ESE	ESE	SE	SE	SE	SE	SE	SE	SE	ESE	ESE	SE	SE	SE	SSE	SSE	SSE	SSE	SSE	SSE	SSE	SSE	S	S	S	SSW	SSW	SSW	SW	SW	SW			
Lynchburg Ferries	3	2	3	4	5	7	7	8	6	7	8	8	6	4	3	7	6	6	6	6	6	6	6	6	6	6	6	7	9	10	11	11	12	11	11	11	11	
	7	8	8	9	11	11	10	11	10	12	13	14	14	13	11	10	9	9	9	9	9	9	9	9	8	8	8	9	11	13	15	17	17	17	17	16		
	E	E	E	E	ESE	ESE	SE	SE	SSE	SE	SE	SE	SE	ESE	ESE	SE	SE	SE	SSE	SSE	SSE	SSE	SSE	SSE	SSE	SSE	S	S	S	SSW	SSW	SSW	SW	SW	SW			
Exxon 3	3	3	3	4	6	7	7	8	7	7	8	8	6	5	5	7	7	6	7	7	7	7	7	7	6	6	6	8	9	9	9	10	11	12	11	11	11	
	7	7	7	9	12	12	10	11	10	12	13	14	15	14	11	10	9	9	9	10	10	10	10	10	9	9	9	9	11	13	14	16	17	17	17	16		
	ENE	E	E	E	ESE	ESE	SE	SE	SE	SE	SE	SE	SE	ESE	ESE	SE	SE	SSE	SSE	SSE	SSE	SSE	SSE	SSE	SSE	SSE	S	S	S	SSW	SSW	SSW	SW	SW	SW			
Morgans Point	4	4	4	6	8	8	7	8	7	8	8	8	8	7	6	8	8	8	8	8	8	8	8	8	8	7	8	9	10	10	12	12	12	12	12	12		
	7	6	7	9	13	13	11	12	11	12	13	14	15	14	11	10	9	10	10	10	10	10	10	10	10	9	9	10	10	11	12	14	15	17	17	18	17	
	ENE	E	E	E	ESE	ESE	SE	SE	SE	SE	SE	SE	SE	ESE	ESE	SE	SE	SE	SSE	SSE	SSE	SSE	SSE	SSE	SSE	SSE	S	S	S	SSW	SSW	SSW	SSW	SSW	SSW			
75/76	5	6	6	8	11	10	8	9	8	10	10	10	9	7	10	9	9	9	10	9	10	9	10	9	10	9	10	10	10	10	11	12	13	13	13	13		
	6	6	7	10	14	15	13	13	12	13	14	15	15	14	10	11	10	10	10	11	11	11	11	11	11	11	11	11	11	12	13	15	17	18	19	17		
	ENE	E	E	E	ESE	ESE	SE	SE	SE	SE	SE	SE	SE	ESE	ESE	SE	SE	SSE	SSE	SSE	SSE	SSE	SSE	SSE	SSE	SSE	S	S	S	SSW	SSW	SSW	SSW	SSW	SSW			
63/64	5	6	7	9	11	11	9	10	9	9	11	10	10	9	7	9	9	9	9	9	9	9	10	10	10	10	10	10	10	10	11	11	12	13	13	13		
	5	6	8	10	15	15	13	14	12	13	14	15	15	14	10	10	10	10	10	11	11	11	11	11	11	11	11	12	12	13	15	17	18	18	16			
	ENE	E	E	E	ESE	ESE	SE	SE	ESE	ESE	SE	SE	SE	ESE	E	SE	SE	SSE	SSE	SSE	SSE	SSE	SSE	SSE	SSE	SSE	S	S	S	SSW	SSW	SSW	SSW	SSW	SSW			
51/52	5	5	7	9	10	10	9	10	8	9	10	9	10	8	7	8	8	8	9	9	9	9	9	9	10	10	10	10	10	10	11	11	12	13	13	12		
	5	6	8	11	14	15	13	13	12	12	13	13	16	14	10	9	9	9	10	10	10	10	11	11	11	11	11	10	10	10	11	11	12	13	14	16	17	16
	NE	E	E	E	ESE	ESE	SE	SE	ESE	ESE	SE	SE	SE	ESE	ESE	SE	SE	SE	SSE	SSE	SSE	SSE	SSE	SSE	SSE	SSE	S	S	S	SSW	SSW	SSW	SSW	SSW	SSW			
37/38	4	5	7	9	9	10	9	10	8	9	8	9	9	7	7	8	7	8	8	8	8	9	9	9	9	9	10	10	10	10	11	11	12	13	13	12		
	5	5	8	10	13	14	13	12	11	11	11	13	15	14	12	9	8	9	9	10	10	10	10	10	10	10	10	10	10	10	11	11	12	13	14	16	17	15
	NE	ENE	ENE	ENE	E	ESE	ESE	ESE	ESE	ESE	ESE	SE	SE	ESE	ESE	SE	SE	SSE	SSE	SSE	SSE	SSE	SSE	SSE	SSE	SSE	S	S	S	SSW	SSW	SSW	SSW	SSW	SSW			
25/26	4	5	6	8	9	10	10	9	8	7	9	8	7	7	7	7	7	7	7	7	7	7	8	8	8	8	9	9	10	10	11	11	12	12	12	11		
	5	5	8	9	13	14	12	12	11	10	10	13	13	13	12	9	8	9	9	10	10	10	10	10	10	10	10	10	11	12	13	14	15	16	16	15		
	NNE	ENE	ENE	E	ESE	ESE	ESE	ESE	ESE	ESE	SE	SE	ESE	SE	ESE	SE	SE	SSE	SSE	SSE	SSE	SSE	SSE	SSE	SSE	SSE	S	S	S	SSW	SSW	SSW	SSW	SSW	SSW			
11/12	5	4	6	7	11	11	11	10	9	8	8	9	10	8	7	8	7	7	7	7	8	8	8	8	8	9	9	9	10	10	10	10	10	10	11	11	11	
	5	6	8	10	14	14	13	12	11	10	10	12	14	14	12	9	9	9	9	10	10	10	10	10	10	10	10	10	10	10	11	11	12	13	15	16	15	
	NNE	NE	ENE	ENE	ESE	ESE	ESE	ESE	ESE	ESE	SE	SE	SE	ESE	SE	SE	SE	SSE	SSE	SSE	SSE	SSE	SSE	SSE	SSE	SSE	S	S	S	SSW	SSW	SSW	SSW	SSW	SSW			
1 & 2 Bravo	3	5	7	11	13	13	12	11	10	8	9	10	12	12	9	9	9	9	9	10	10	10	10	10	10	10	10	10	10	10	10	11	11	11	12	12		
	5	6	8	12	14	14	12	11	11	9	9	10	11	14	16	13	10	10	10	10	10	10	10	10	10	10	10	10	10	10	10	10	11	11	12	12	15	
	NE	ENE	E	ESE	ESE	ESE	ESE	ESE	ESE	ESE	SE	SE	SE	SE	SE	SE	SE	SSE	SSE	SSE	SSE	SSE	SSE	SSE	SSE	SSE	S	S	S	SSW	SSW	SSW	SSW	SSW	SSW			

NOTE: This is automated data that may/may not agree with the official BAM thinking that's found on the daily slides. This data should be used as a guide only

# Houston Pilots: Sun. 11/19/2023



## Forecast Discussion

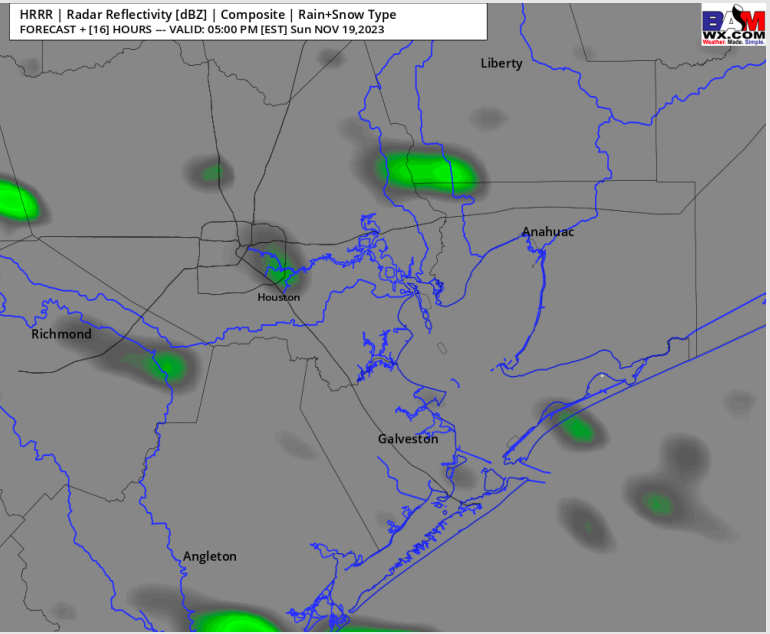
**Precip:** Dry conditions favored for the AM hours today, with a 20% chance of light/isolated showers between 1-8 PM.

**Wind:** Winds from 5:30 AM CT -10 AM CT will veer from the north to SE and remain from the SE for the rest of the day. **N of Morgan's Point:** 3 -8 kts for much of the AM hours, before an increase to 5-10 kts between 10 AM - 5 PM. Wind will revert to 3-8 kts after this time. **S of Morgan's Point:** Winds will be 3-8 kts through 8 AM, increasing to 7-12 kts for the remainder of the day. Towards 6 PM winds calm to 3 - 8 kts with the Boarding Station remaining at 7 - 12 kts.

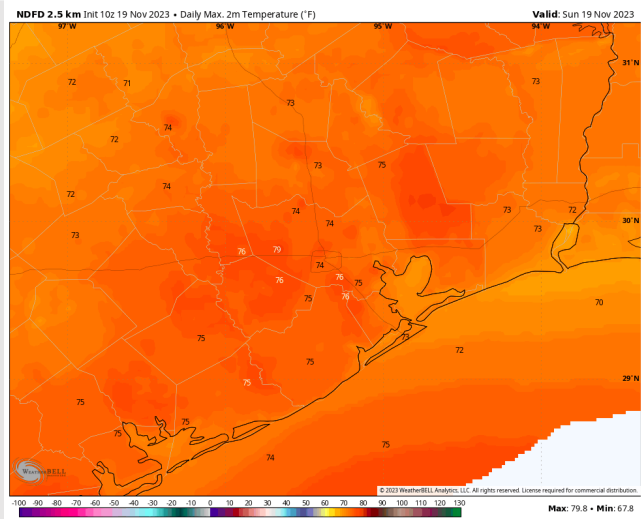
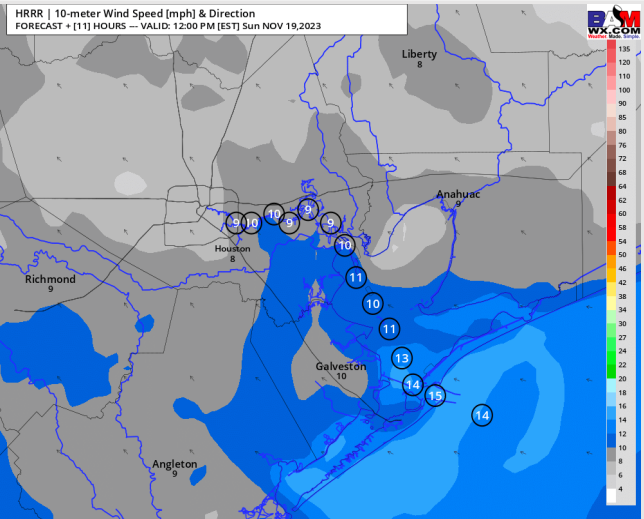
**High Temps:** **N of Morgan's Point:** Mid 70s F. **S of Morgan's Point:** Low 70s F.

**Visibility:** A few pockets of patchy fog will be possible near Morgan's Point/Exxon 3 this morning in the 2 -4 mi range through 8 AM CT. The majority of fog is favored to stay to the SW of the stations.

## Precip Image: 4 PM CT



Wind Speed:  
11 AM CT



High Temps  
Today



# Houston Pilots: Mon. 11/20/2023



## Forecast Discussion

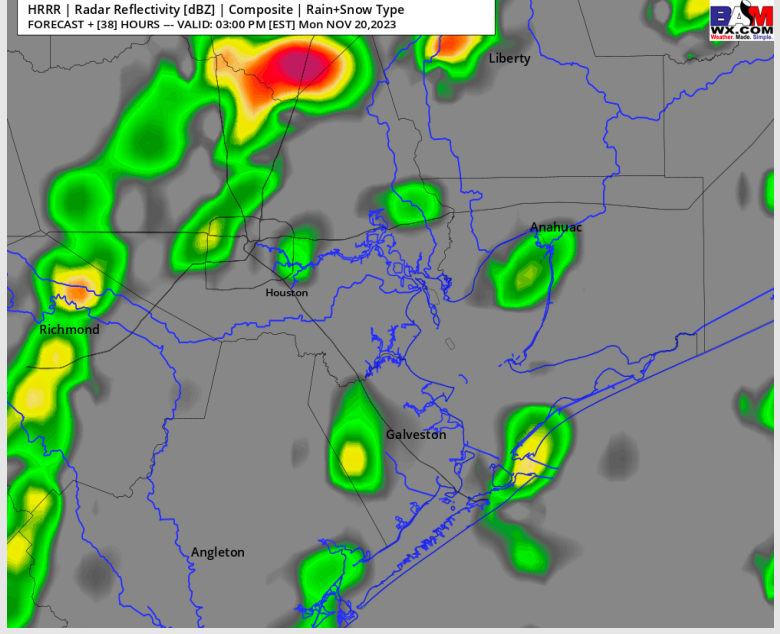
**Precip:** Pockets of isolated drizzle (10-20%) will start near sunrise. Any moisture in the AM is favored to remain light in nature. Towards 12 PM, coverage will become hit/miss at 40% through 5 PM, before drizzle tapers off by 7 PM.

**Wind:** Winds will be from the S on Monday, with a shift from the W late in the evening after the front pushes through ~6 PM. **N of Morgan's Point:** Winds will start at 3-8 kts with an increase to 10 - 15 kts from 11 AM - 4 PM. After 4 PM winds return to 3-8 kts. **S of Morgan's Point:** Winds will be at 5-10 kts through 11 AM before increasing to 12-17 kts. Winds will then decrease back to 5-10 kts after 6 PM. Boarding station winds will remain at 12 - 17 kts. **Gusts of 21 - 24 kts at the Boarding Station from 2- 5 PM.**

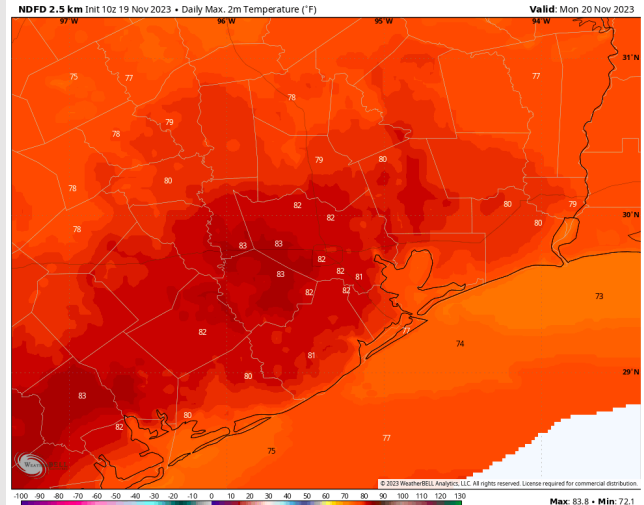
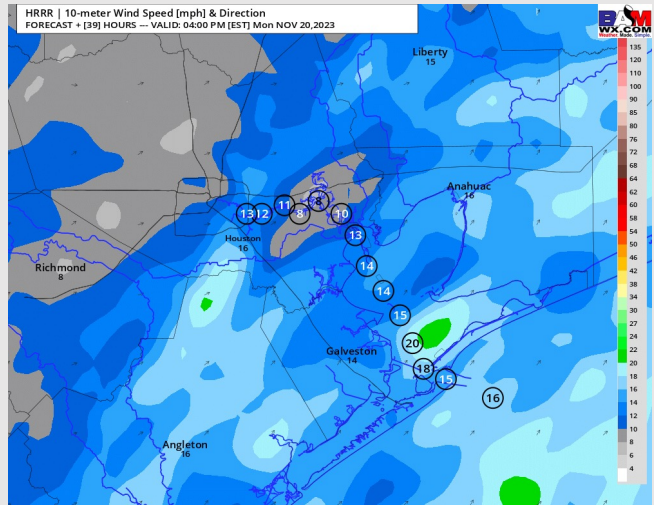
**High Temps:** **N of Morgan's Point:** Low 80s F. **S of Morgan's Point:** Mid 70s F.

**Visibility:** Not anticipating fog concerns at this time.

## Precip Image: 2 PM CT



Wind Speed:  
3 PM CT



High Temps  
Monday

# Houston Pilots: Tue. 11/21/2023



## Forecast Discussion

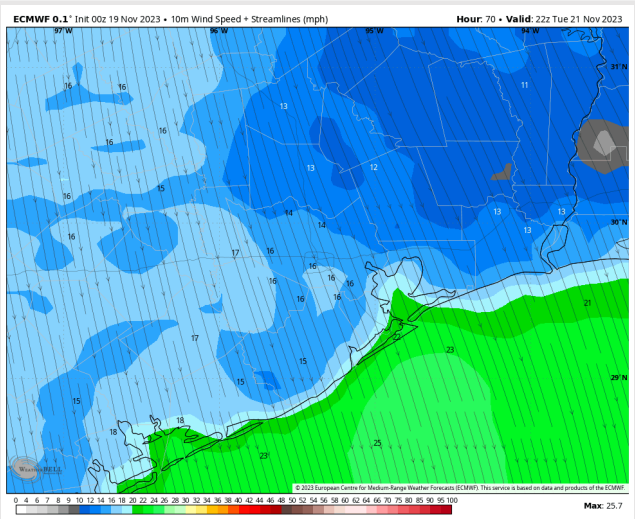
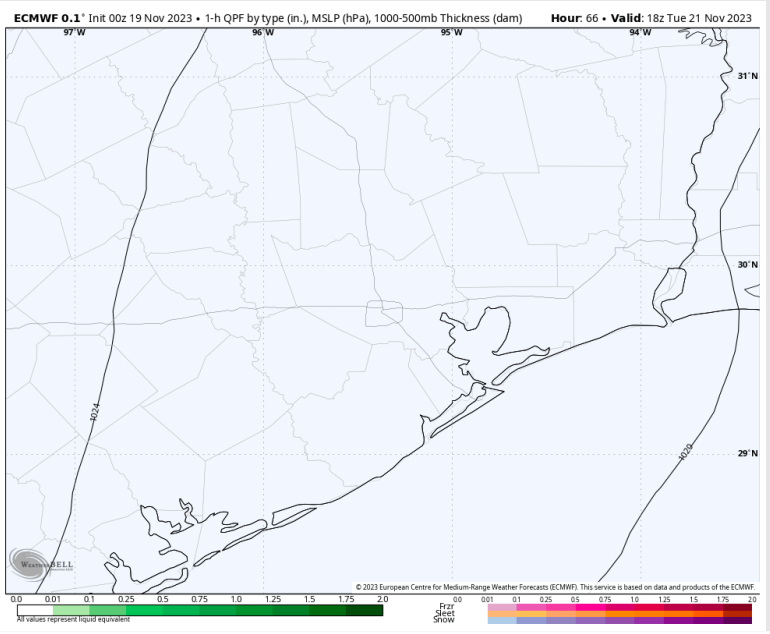
**Precip:** Conditions will become cooler and drier after the cold front passes on MON. Favoring dry conditions throughout the day.

**Wind:** Winds will be out of the NW throughout the day. **N of Morgan's Point:** Winds at 9-14 kts throughout much the day, decreasing to 5 - 10 kts after 9 PM. **S of Morgan's Point:** Winds at 14-19 kts throughout the day. Winds at the Boarding station a touch higher at 17 - 22 kts. **Gusts of 21-24 kts possible across all stations after 11 AM, with the Boarding station at 24 - 28 kts.**

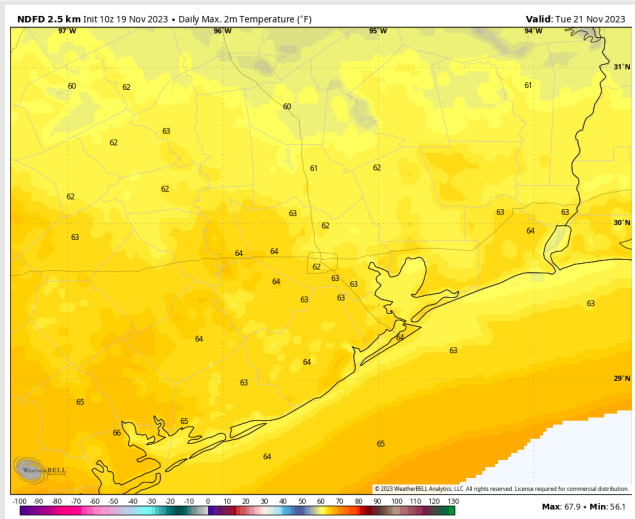
**High Temps:** Notably cooler behind the cold front. **N of Morgan's Point:** Mid 60s F. **S of Morgan's Point:** Mid 60s F.

**Visibility:** No visibility concerns the rest of the day.

## Precip Image: 12 PM CT

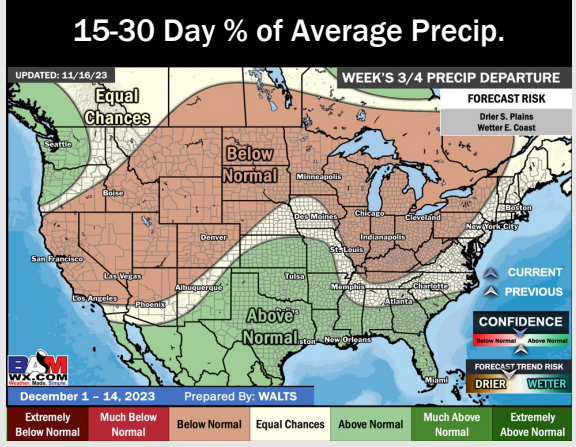
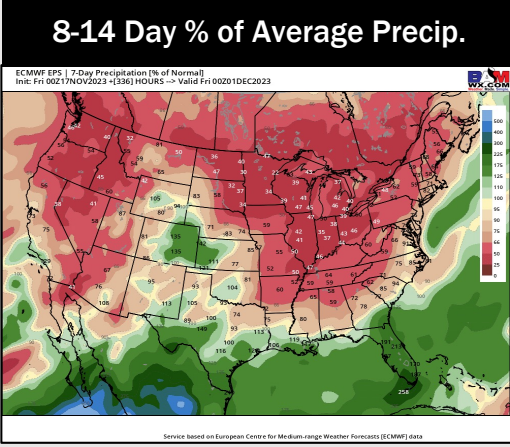
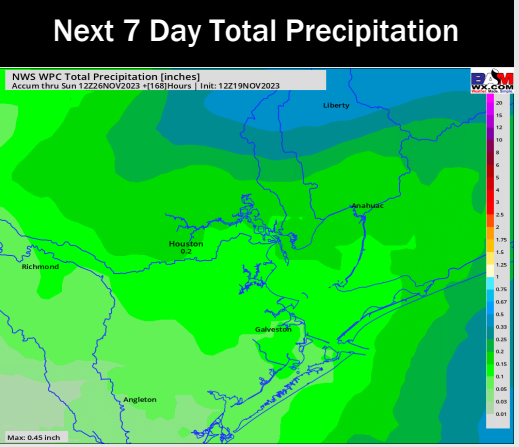
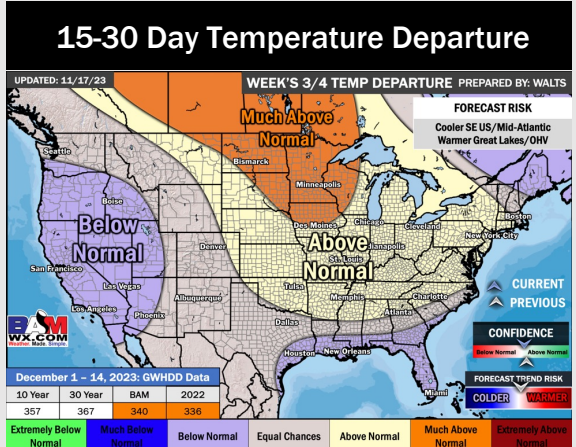
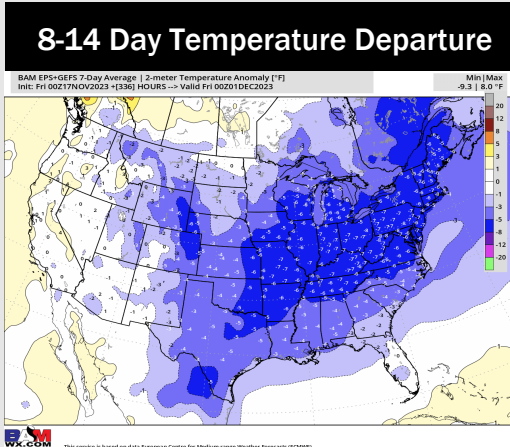
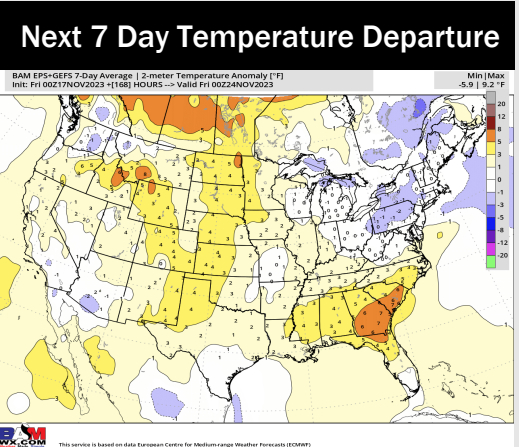


Wind Speed:  
4 PM CT



High Temps  
Tuesday

# Houston Pilots: 11/19/23



- Today and MON presenting rain chances via two cold fronts. Anticipating seasonable to slightly above normal temps for this upcoming week.
- Above normal rainfall and below normal temperatures are expected into the week 2 timeframe.
- Below normal temperatures and above normal chances for precipitation are favored in the weeks 3/4 timeframe.