

Houston Pilots Forecast Package



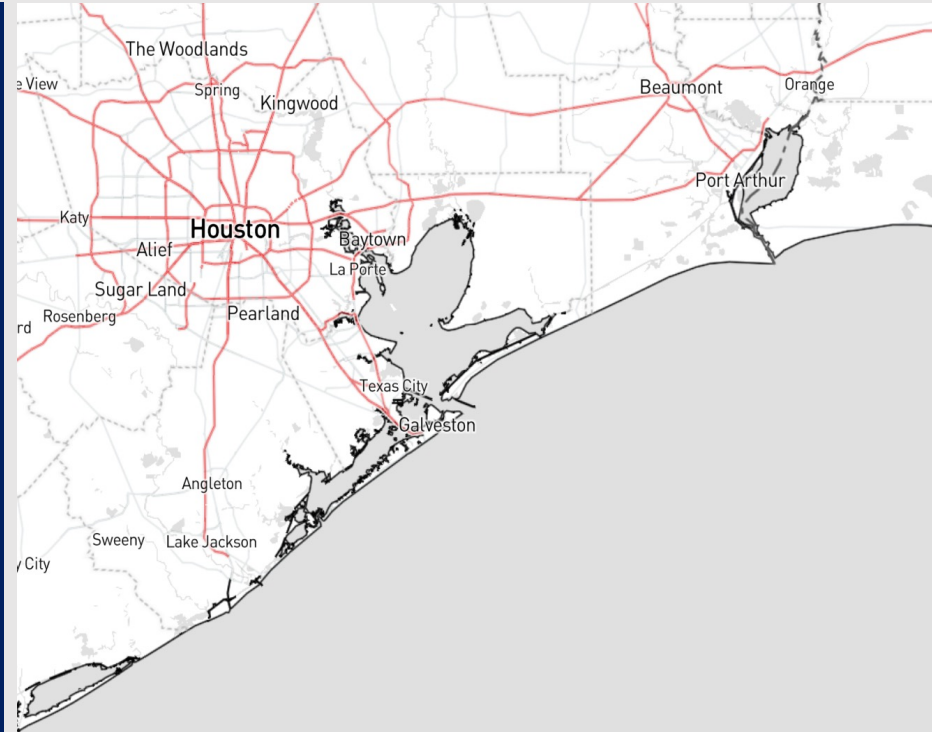
Updated: 4:20 AM CT

Friday, November 17, 2023

Forecaster: Alyssa Elliott

Weather Headlines

- Mostly dry conditions are anticipated for the HOU area for the next 72 hours.
- Winds will be on the calmer side over the new few days. Gusts early Sat AM may reach ~22 kts, calming after sunrise.
- Keeping an eye on a haze and cases of patchy fog W. of stations today and tomorrow.



Radar/NWS Alerts: 4:15 AM CT

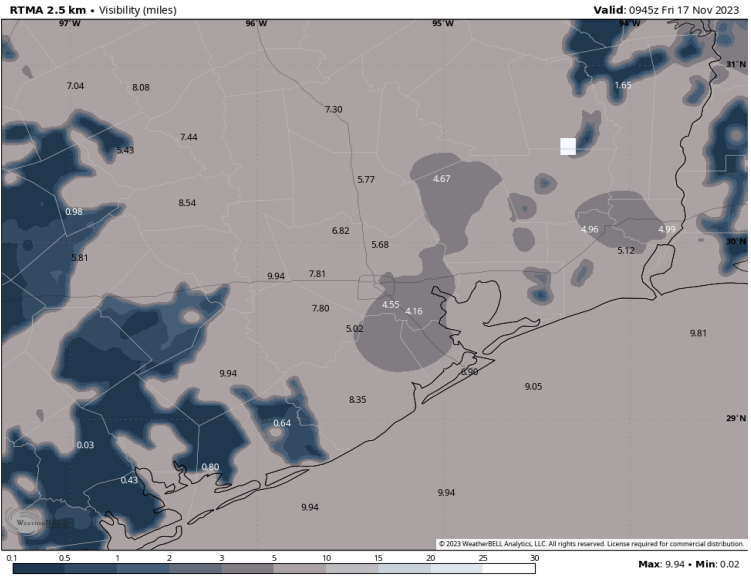


As always, please do not hesitate to reach out to us with any forecast questions via the chat option on the Weather Porthole or our on-call number, **(317)-560-8122** press 1 for forecast questions.

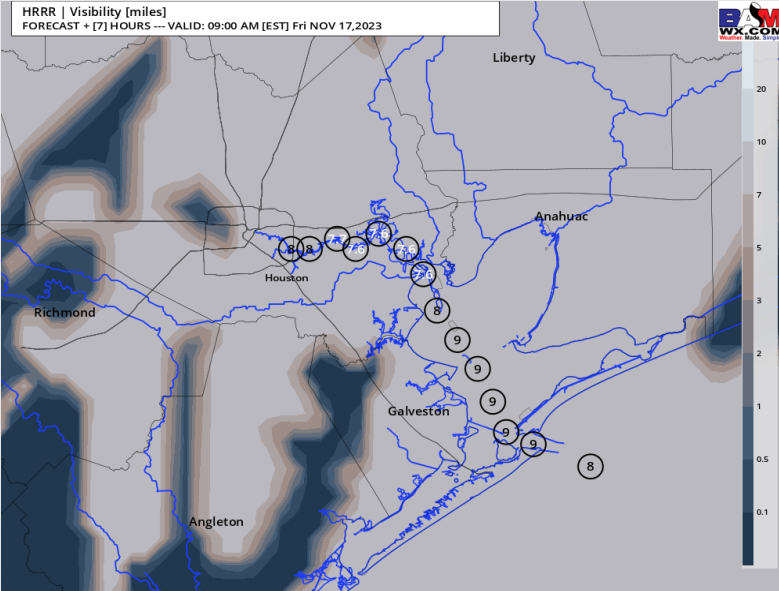
Houston Pilots Visibility Report



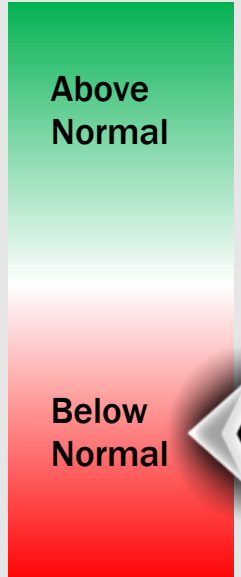
CURRENT VISIBILITY as of 5:05 AM



8 AM CT FRI VISIBILITY



Confidence



TIMEFRAME DISCUSSED

THREAT

NOW – 9:30 AM FRI

LOW

- Patchy Fog will be possible for stations N of Morgan’s Point now through 9:30AM.
- Visibilities of 2-4 miles can’t be ruled out due to a haze, but greatest risk for fog will likely remain to the west / southwest of stations.
- Confidence remains fairly-high stations S of Morgan’s Point will not be impacted by fog during the morning hours, but lower in terms of how far east patchy fog can extend for locations N of Morgan’s point.

Houston Pilots Extended Range Visibility Report



Monday 11/20/23

No visibility concerns Monday.

Forecast Confidence



Tuesday 11/21/23

No visibility concerns Tuesday.

Forecast Confidence



Wednesday 11/22/23

No visibility concerns Wednesday.

Forecast Confidence



Chance for Fog

Monday AM	Unlikely
Monday PM	Unlikely
Tuesday AM	Unlikely
Tuesday PM	Unlikely
Wednesday AM	Unlikely
Wednesday PM	Unlikely

Houston Pilots Visibility Chart (miles)



Forecast Confidence



Time	Fri 2am	Fri 3am	Fri 4am	Fri 5am	Fri 6am	Fri 7am	Fri 8am	Fri 9am	Fri 10am	Fri 11am	Fri 12pm	Fri 1pm	Fri 2pm	Fri 3pm	Fri 4pm	Fri 5pm	Fri 6pm	Fri 7pm	Fri 8pm	Fri 9pm	Fri 10pm	Fri 11pm	Sat 12am	Sat 1am	Sat 2am	Sat 3am	Sat 4am	Sat 5am	Sat 6am	Sat 7am	Sat 8am	Sat 9am	Sat 10am	Sat 11am	Sat 12pm	Sat 1pm	
610 Bridge	10	8	6	6	6	6	6	10	10	10	10	10	10	10	10	10	10	10	10	10	10	10	10	8	8	8	7	6	6	6	7	10	10	10	10	10	
Kinder 1	10	8	6	6	6	6	6	10	10	10	10	10	10	10	10	10	10	10	10	10	10	10	10	8	8	8	7	7	7	6	7	10	10	10	10	10	
Greens Bayou	10	8	6	6	5	5	6	10	10	10	10	10	10	10	10	10	10	10	10	10	10	10	10	8	8	8	8	8	8	7	8	10	10	10	10	10	
Shell Crude	10	10	8	6	5	5	6	10	10	10	10	10	10	10	10	10	10	10	10	10	10	10	10	8	8	8	8	8	8	8	8	8	10	10	10	10	10
Lynchburg Ferries	10	10	10	6	5	5	8	10	10	10	10	10	10	10	10	10	10	10	10	10	10	10	10	8	8	8	8	8	8	8	8	8	10	10	10	10	10
Exxon 3	10	10	10	8	6	6	9	10	10	10	10	10	10	10	10	10	10	10	10	10	10	10	10	9	8	8	8	8	8	8	8	8	10	10	10	10	10
Morgans Point	10	10	10	8	7	6	9	10	10	10	10	10	10	10	10	10	10	10	10	10	10	10	10	9	8	8	8	8	8	8	8	8	10	10	10	10	10
75/76	10	10	10	8	8	7	9	10	10	10	10	10	10	10	10	10	10	10	10	10	10	10	9	9	8	8	8	8	8	8	8	8	10	10	10	10	10
63/64	10	10	10	8	8	7	9	10	10	10	10	10	10	10	10	10	10	10	10	10	10	10	9	9	9	9	10	10	10	8	9	10	10	10	10	10	
51/52	10	10	10	8	10	7	10	10	10	10	10	10	10	10	10	10	10	10	10	10	10	10	10	10	10	10	10	10	10	10	8	10	10	10	10	10	
37/38	10	10	10	8	10	7	10	10	10	10	10	10	10	10	10	10	10	10	10	10	10	10	9	9	9	9	10	10	10	10	10	10	10	10	10	10	
25/26	10	10	10	10	10	8	10	10	10	10	10	10	10	10	10	10	10	10	10	10	10	10	10	10	9	8	10	10	10	10	10	10	10	10	10	10	
11/12	10	10	10	10	10	8	10	10	10	10	10	10	10	10	10	10	10	10	10	10	10	10	10	10	9	8	10	10	10	10	10	10	10	10	10	10	
1 & 2 Bravo	10	10	10	9	10	8	10	10	10	10	10	10	10	10	10	10	10	10	10	10	10	10	10	10	9	8	9	9	9	9	9	9	9	9	9	10	10

NOTE: This is automated data that may/may not agree with the official BAM thinking that's found on the daily slides or special visibility report slides. This data should be used as a guide only

Houston Pilots Wind Chart



Forecast Confidence



Example

Sustained wind 13 Knots
Gusts 18 Knots
Wind from the N

WS: 13
G:18
N

Time Knots	Fri 2am	Fri 3am	Fri 4am	Fri 5am	Fri 6am	Fri 7am	Fri 8am	Fri 9am	Fri 10am	Fri 11am	Fri 12pm	Fri 1pm	Fri 2pm	Fri 3pm	Fri 4pm	Fri 5pm	Fri 6pm	Fri 7pm	Fri 8pm	Fri 9pm	Fri 10pm	Fri 11pm	Sat 12am	Sat 1am	Sat 2am	Sat 3am	Sat 4am	Sat 5am	Sat 6am	Sat 7am	Sat 8am	Sat 9am	Sat 10am	Sat 11am	Sat 12pm	Sat 1pm		
610 Bridge	1	2	1	1	0	1	1	1	3	3	3	4	4	4	3	3	4	3	3	2	2	1	1	0	2	2	2	3	5	5	5	5	6	7	6	6	5	5
	5	5	2	2	1	1	3	7	5	5	5	6	6	6	4	3	4	3	3	2	2	1	2	2	4	5	7	7	8	8	8	8	9	10	10	9	8	7
Kinder 1	1	2	1	1	0	1	1	1	3	3	3	4	4	4	3	3	3	2	2	1	1	0	2	3	3	5	5	5	5	5	6	7	6	6	5	5		
	5	5	2	2	1	1	3	7	5	5	5	5	5	6	4	5	4	4	3	2	1	1	2	4	5	7	7	8	8	8	9	10	9	9	8	7		
Greens Bayou	1	2	1	1	0	1	1	1	3	3	2	3	3	3	2	3	2	2	1	1	0	1	2	3	4	5	5	5	5	5	6	7	6	6	5	5		
	5	5	3	2	1	1	2	7	6	5	5	5	5	5	4	5	4	4	3	2	1	1	2	4	6	7	7	7	8	8	9	10	9	9	7	7		
Shell Crude	2	2	1	1	1	1	1	0	3	3	2	2	3	3	2	3	2	2	1	0	1	2	3	3	5	5	5	5	5	6	6	7	6	6	5	5		
	5	5	3	1	1	1	2	6	6	6	5	6	5	5	4	5	5	4	3	1	1	1	3	4	5	7	7	8	8	9	10	9	9	7	7			
Lynchburg Ferries	2	2	2	1	1	1	1	0	3	3	2	2	2	2	2	4	4	3	2	1	0	1	2	3	4	5	5	5	5	6	6	7	7	6	5	5		
	5	5	3	1	2	1	2	5	6	6	5	6	5	5	4	5	4	3	1	1	1	2	3	5	5	8	7	7	8	8	9	10	9	9	8	7		
Exxon 3	2	2	2	1	2	1	1	0	2	3	3	2	2	2	2	4	4	3	2	1	1	2	2	3	4	5	5	6	6	6	7	7	7	6	6	6		
	4	5	3	1	2	1	2	3	6	5	5	6	6	6	4	6	5	4	3	2	2	2	3	5	6	8	8	8	8	9	10	9	9	8	8			
Morgans Point	2	3	1	1	2	2	2	1	0	2	3	2	2	3	3	3	5	4	3	2	2	2	3	4	5	6	8	8	9	9	9	10	10	10	9	8	8	
	4	5	2	1	2	2	2	2	6	6	6	6	6	6	4	6	6	5	4	3	3	3	4	5	6	8	8	9	9	9	10	10	10	9	8	8		
75/76	2	4	0	0	3	2	2	2	2	2	2	2	3	4	4	7	6	5	4	3	2	2	3	4	6	7	8	9	9	10	9	9	8	7	6	6		
	3	4	1	1	3	2	2	2	6	7	6	6	6	6	5	8	7	6	4	3	3	3	4	5	6	8	9	10	10	11	11	11	10	10	9	9		
63/64	1	3	0	1	2	2	2	3	3	2	2	2	3	4	4	7	6	5	4	2	2	2	3	4	6	8	9	10	10	11	11	10	9	8	6	6		
	2	4	1	1	2	2	2	3	6	6	6	6	6	6	4	8	7	6	4	3	3	2	4	5	6	8	10	10	11	11	12	11	11	10	10	9		
51/52	1	2	1	2	2	2	3	3	2	2	3	2	2	3	3	6	6	4	3	2	2	2	3	4	5	7	8	9	10	10	10	11	10	9	7	6		
	1	3	1	2	2	2	3	3	4	6	6	6	6	5	4	7	5	4	3	2	3	2	4	4	6	8	9	10	11	11	12	11	11	10	9	9		
37/38	1	2	1	3	2	2	3	3	2	1	4	3	2	2	3	6	5	3	3	2	1	3	4	5	7	8	9	10	10	10	10	10	9	8	7	6		
	1	2	2	3	2	2	3	3	3	6	6	6	6	6	4	3	6	6	4	3	3	2	3	4	5	7	8	9	10	11	11	12	11	11	10	9	8	
25/26	SE	WNW	S	NW	SE	NW	NW	NNW	NW	SW	S	E	ENE	E	E	SSE	S	S	SSW	SW	WSW	WNW	NW	NNW	N	NNE	NNE	NNE	NNE	NNE	NNE	NNE	NNE	NNE	NNE	SSW		
	1	2	2	3	2	1	3	3	2	1	3	3	1	2	3	5	4	3	2	2	1	3	3	4	6	7	8	9	9	9	9	9	9	9	8	7	6	
11/12	2	1	2	3	3	1	3	4	2	1	2	2	1	2	4	4	3	3	3	2	2	3	4	5	6	7	9	9	9	9	9	9	9	8	7	6		
	2	2	2	3	3	2	4	4	3	6	5	5	4	3	4	5	5	4	3	3	3	3	4	5	6	8	9	10	10	11	11	11	11	11	10	9	8	
1 & 2 Bravo	1	1	1	3	4	2	2	5	3	2	2	2	0	2	4	4	4	4	4	3	4	4	4	6	7	9	10	11	11	11	12	11	10	9	8	7		
	3	4	2	4	4	2	3	5	3	3	6	5	3	2	4	5	5	5	4	4	5	4	5	7	8	9	11	12	12	12	12	12	11	10	10	8		

NOTE: This is automated data that may/may not agree with the official BAM thinking that's found on the daily slides. This data should be used as a guide only

Houston Pilots: Fri. 11/17/2023



Forecast Discussion

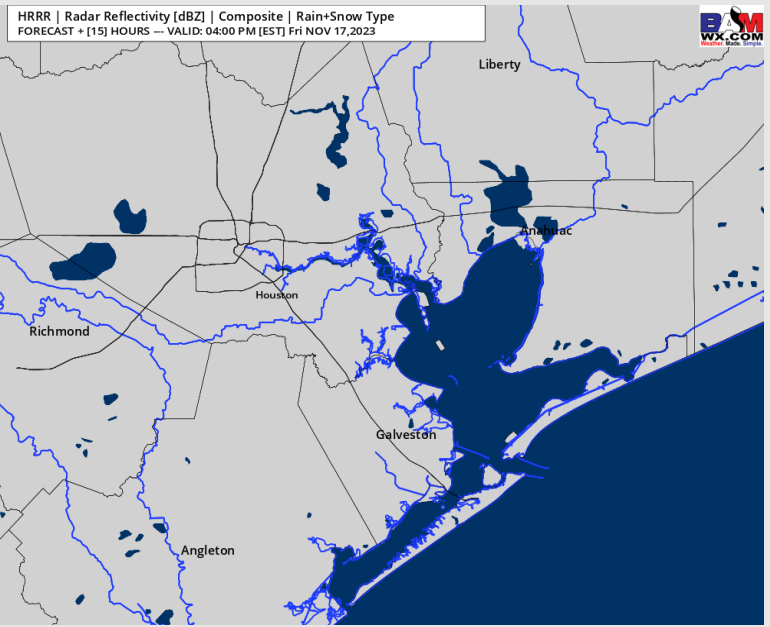
Precip: Favoring dry conditions throughout the day today.

Wind: Winds direction will be variable throughout the day today. **N of Morgan's Point:** Winds will be at calm 1 - 5 kts throughout the morning, increasing to 3 - 8 kts after 9 AM. **S of Morgan's Point:** Winds will be at 3 - 8 kts all day Today.

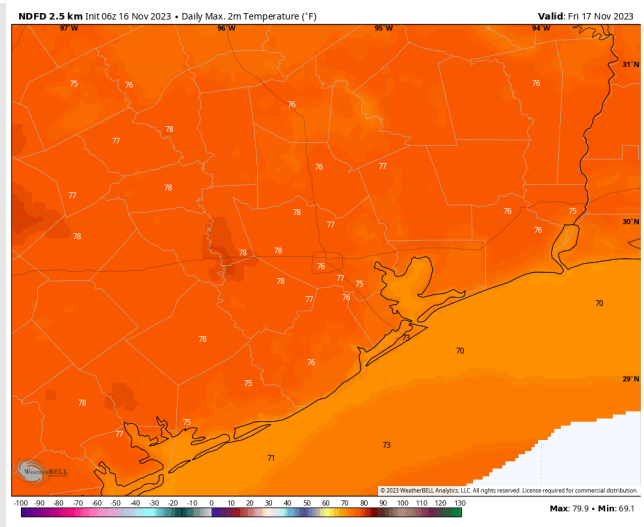
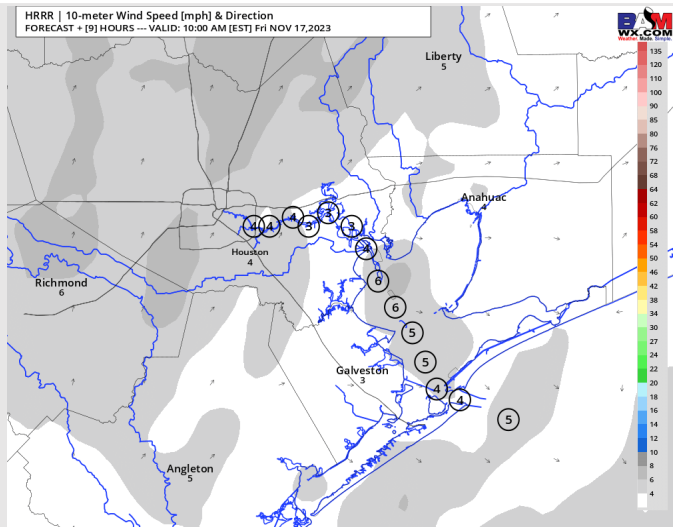
High Temps: **N of Morgan's Point:** Mid 70's F. **S of Morgan's Point:** Lower 70s F.

Visibility: Patchy fog around the HOU area this morning however stations not expected to have visibility issues. Lower cloud deck may result in a haze for stations N of Morgan's Point through 9:30 AM.

Precip Image: 3 PM CT



Wind Speed:
9 AM CT



High Temps
Today

Houston Pilots: Sat. 11/18/2023



Forecast Discussion

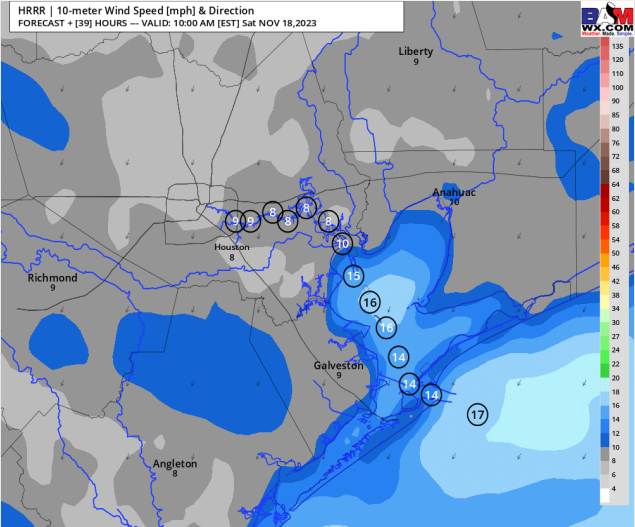
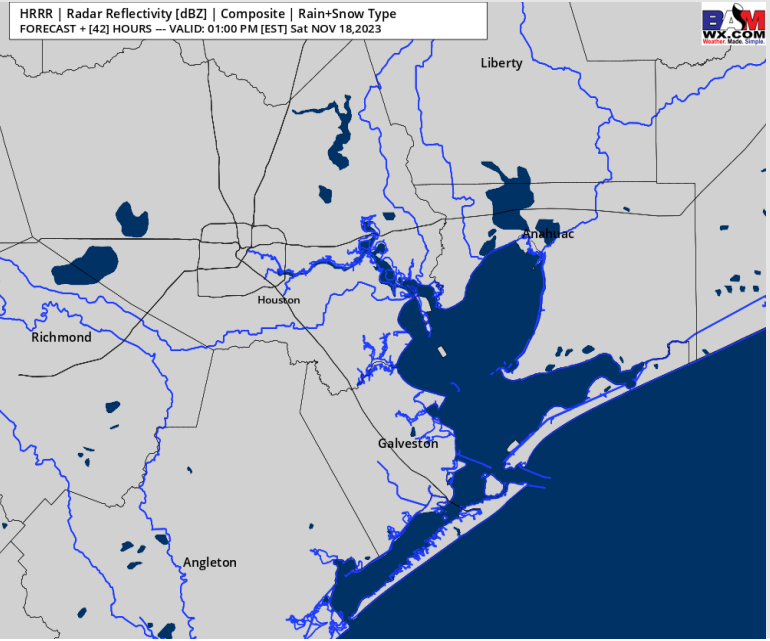
Precip: Favoring dry conditions throughout the day.

Wind: Winds will be out of the E/NE throughout the day. **N of Morgan's Point:** Winds at 4 - 8 kts through the whole day. **S of Morgan's Point:** Winds at 10 - 15 kts through about 10 AM with winds dropping to 3 - 8 kts after 10 AM and through the rest of the day. **Gusts of 18-22 kts possible through noon Sat.**

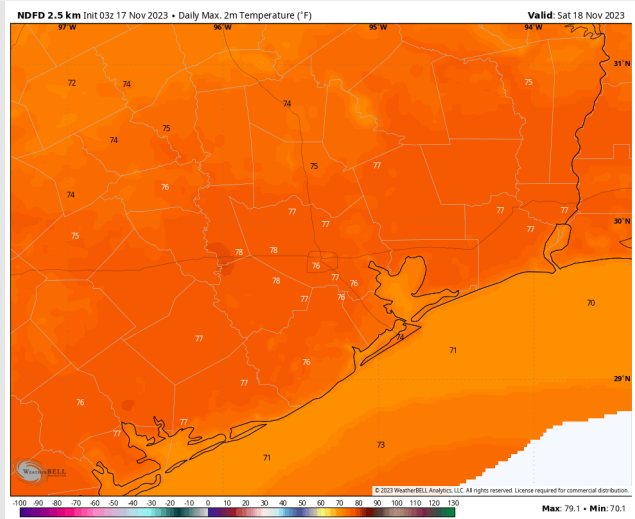
High Temps: **N of Morgan's Point:** Mid-Upper 70s F. **S of Morgan's Point:** Low 70s F.

Visibility: Not anticipating any visibility concerns. Patchy fog expected to remain W. of stations.

Precip Image: 12 PM CT



Wind Speed:
9 AM CT



High Temps
Saturday

Houston Pilots: Sun. 11/19/2023



Forecast Discussion

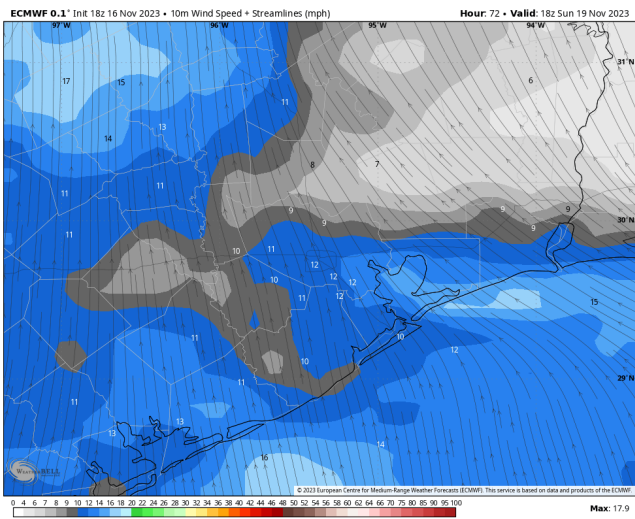
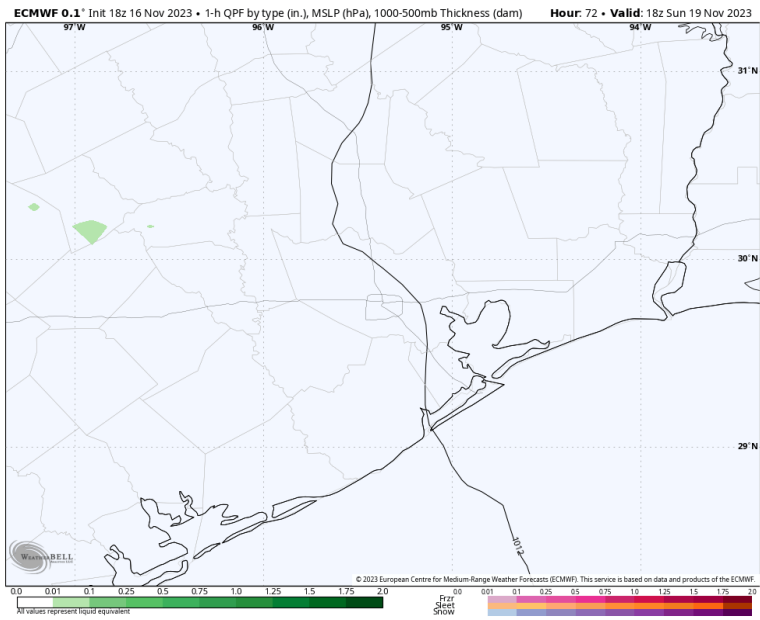
Precip: Dry conditions favored for much of the day Sunday, outside of a low-end risk (10%) for an isolated shower between 12-6 PM.

Wind: Winds will be out of the S/SSE throughout the day. **N of Morgan's Point:** Winds N of Morgan's Point will be at 2-5 kts for much of the AM hours, before an increase to 4-9 kts between 10 AM - 6 PM. Wind will then calm to 2-5 kts after this time. **S of Morgan's Point:** Winds 3 - 8 kts through 7 AM, increasing to 5-10 kts for the remainder of the day.

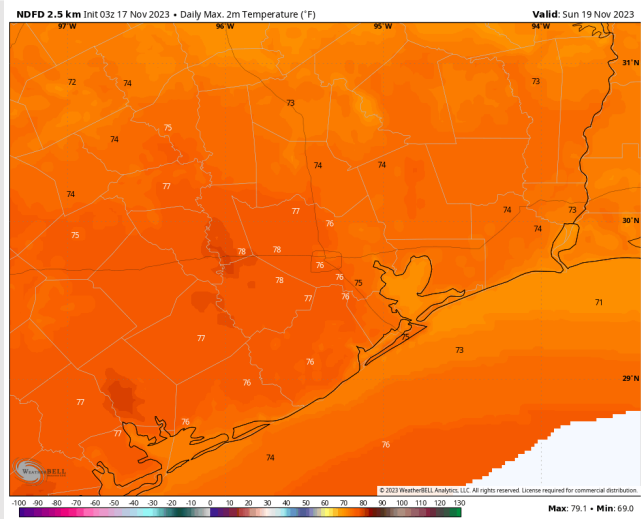
High Temps: **N of Morgan's Point:** Mid-Upper 70s F. **S of Morgan's Point:** Low 70s F.

Visibility: Not anticipating any visibility concern.

Precip Image: 12 PM CT

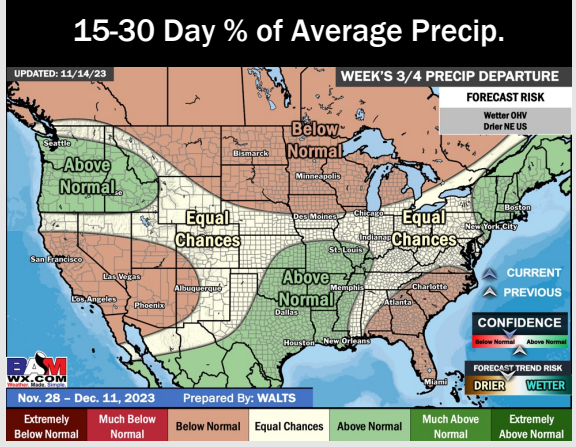
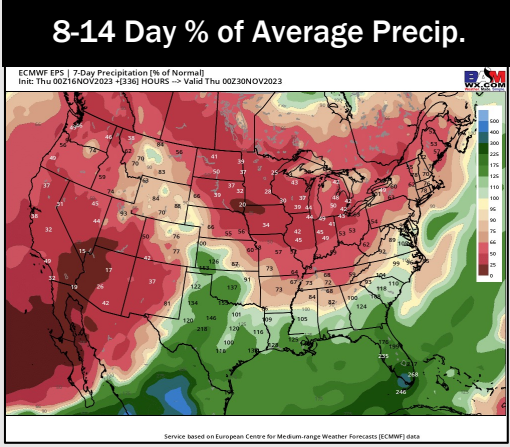
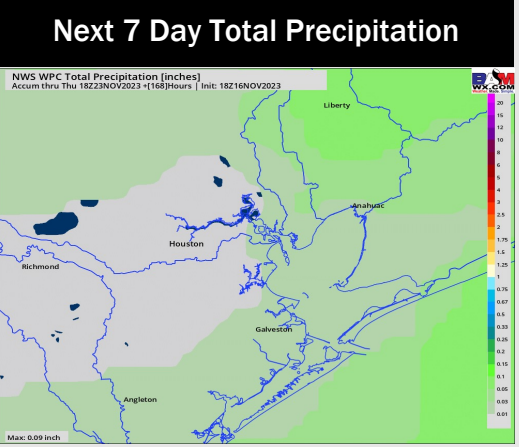
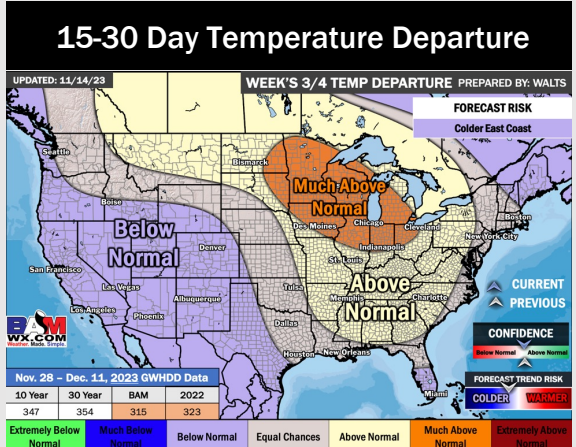
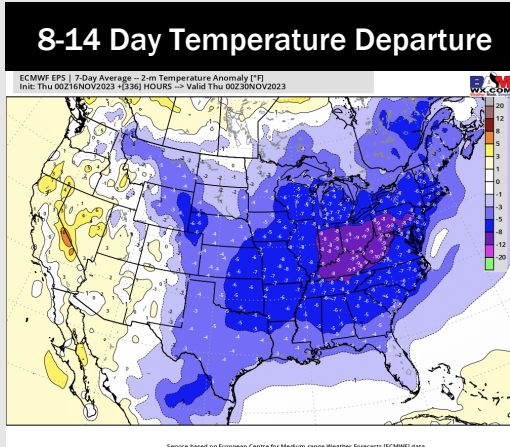
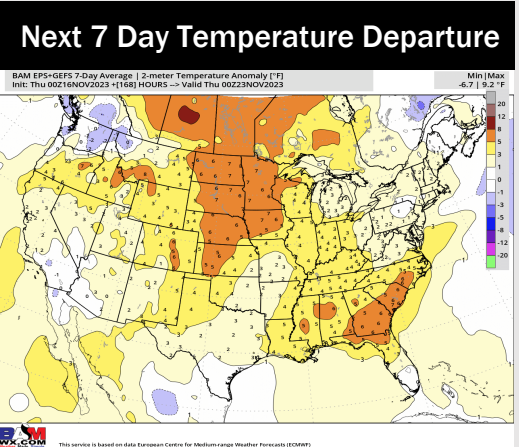


Wind Speed:
12 PM CT



High Temps
Sunday

Houston Pilots: 11/17/23



- A drier 72-hour period favored. Next system enters on Sunday. Seasonal to slightly above temperatures will be in store this week.
- Above normal rainfall and below normal temperatures are expected into the week 2 timeframe.
- Seasonal temperatures and above normal chances for precipitation are favored in the weeks 3/4 timeframe.