

Houston Pilots Forecast Package



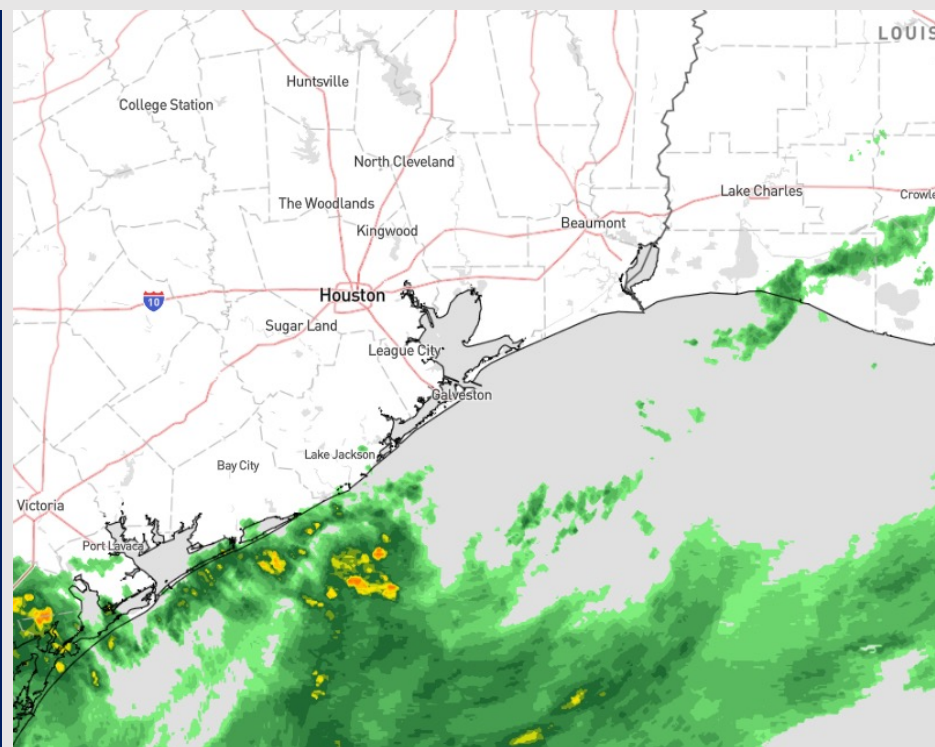
Updated: 2:00 PM CT

Saturday, November 11, 2023

Forecaster: Jonathan Kipper

Weather Headlines

- Scattered to widespread shower / storm chances will continue through MON bringing heavy rainfall and localized flash flooding potential.
- Sustained winds expected to remain calm N of Morgan's Point. Winds south of Morgan's Point between 15-20 kts this weekend.
- **Monitoring MON for elevated winds S of Morgan's Point and Gusts of 30-40 kts. More details on slides below.**
- **Monitoring potential for wave heights of 4-5 ft near the Boarding Station on MON as well (more details on timing will be provided if needed).**



Radar/NWS Alerts: 1:50 PM CT



As always, please do not hesitate to reach out to us with any forecast questions via the chat option on the Weather Porthole or our on-call number, **(317)-560-8122** press 1 for forecast questions.

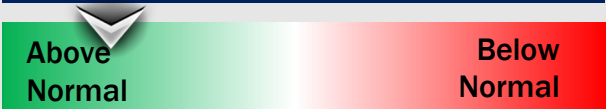
Houston Pilots Extended Range Visibility Report



Tuesday 11/14/23

Not anticipating any fog concerns Tuesday.

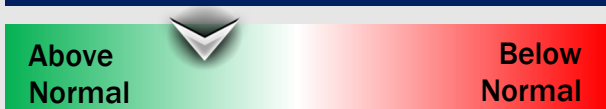
Forecast Confidence



Thursday 11/16/23

No visibility concerns Thursday.

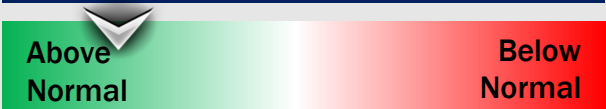
Forecast Confidence



Wednesday 11/15/23

Not anticipating any visibility concerns on Wednesday.

Forecast Confidence



Chance for Fog

Tuesday AM	Unlikely
Tuesday PM	Unlikely
Wednesday AM	Unlikely
Wednesday PM	Unlikely
Thursday AM	Unlikely
Thurssday PM	Unlikely

Houston Pilots Visibility Chart (miles)



Time	Sat 1pm	Sat 2pm	Sat 3pm	Sat 4pm	Sat 5pm	Sat 6pm	Sat 7pm	Sat 8pm	Sat 9pm	Sat 10pm	Sat 11pm	Sun 12am	Sun 1am	Sun 2am	Sun 3am	Sun 4am	Sun 5am	Sun 6am	Sun 7am	Sun 8am	Sun 9am	Sun 10am	Sun 11am	Sun 12pm	Sun 1pm	Sun 2pm	Sun 3pm	Sun 4pm	Sun 5pm	Sun 6pm	Sun 7pm	Sun 8pm	Sun 9pm	Sun 10pm	Sun 11pm	Mon 12am
610 Bridge	10	10	10	10	10	10	10	10	10	10	10	10	10	10	10	10	10	10	10	10	10	10	10	10	10	10	10	10	10	10	10	10	10	10	10	
Kinder 1	10	10	10	10	10	10	10	10	10	10	10	10	10	10	10	10	10	10	10	10	10	10	10	10	10	10	10	10	10	10	10	10	10	10	10	
Greens Bayou	10	10	10	10	10	10	10	10	10	10	10	10	10	10	10	10	10	10	10	10	10	10	10	10	10	10	10	10	10	10	10	10	10	10	10	
Shell Crude	10	10	10	10	10	10	10	10	10	10	10	10	10	10	10	10	10	10	10	10	10	10	10	10	10	10	10	10	10	10	10	10	10	10	10	
Lynchburg Ferries	10	10	10	10	10	10	10	10	10	10	10	10	10	10	10	10	10	10	10	10	10	10	10	10	10	10	10	10	10	10	10	10	10	10	10	
Exxon 3	10	10	10	10	10	10	10	10	10	10	10	10	10	10	10	10	10	10	10	10	10	10	10	10	10	10	10	10	10	10	10	10	10	10	10	
Morgans Point	10	10	10	10	10	10	10	10	10	10	10	10	10	10	10	10	10	10	10	10	10	10	10	10	10	10	10	10	10	10	10	10	10	10	10	
75/76	10	10	10	10	10	10	10	10	10	10	10	10	10	10	10	10	10	10	10	10	10	10	10	10	10	10	10	10	10	10	10	10	10	10	10	
63/64	10	10	10	10	10	10	10	10	10	10	10	10	10	10	10	10	10	10	10	10	10	10	10	10	10	10	10	10	10	10	10	10	10	10	10	
51/52	10	10	10	10	10	10	10	10	10	10	10	10	10	10	10	10	10	10	10	10	10	10	10	10	10	10	10	10	10	10	10	10	10	10	10	
37/38	10	10	10	10	10	10	10	10	10	10	10	10	10	10	10	10	10	10	10	10	10	10	10	10	10	10	10	10	10	10	10	10	10	10	10	
25/26	10	10	10	10	9	8	9	9	10	10	10	10	10	10	10	10	10	10	10	10	10	10	10	10	10	10	10	10	10	10	10	10	10	10	10	
11/12	10	10	10	9	9	7	9	9	9	10	10	10	10	10	10	10	10	10	10	10	10	10	10	10	10	10	10	10	10	10	10	10	10	10	10	
1 & 2 Bravo	10	10	9	7	6	6	6	6	6	6	6	7	7	7	7	10	9	9	9	9	9	9	9	9	9	9	9	9	9	9	9	8	9	9	9	

NOTE: This is automated data that may/may not agree with the official BAM thinking that's found on the daily slides or special visibility report slides. This data should be used as a guide only

Houston Pilots Wind Chart



Sustained wind 13 Knots
Gusts 18 Knots
Wind from the N

Example

WS: 13
G:18
N

Time Knots	Sat 1pm	Sat 2pm	Sat 3pm	Sat 4pm	Sat 5pm	Sat 6pm	Sat 7pm	Sat 8pm	Sat 9pm	Sat 10pm	Sat 11pm	Sun 12am	Sun 1am	Sun 2am	Sun 3am	Sun 4am	Sun 5am	Sun 6am	Sun 7am	Sun 8am	Sun 9am	Sun 10am	Sun 11am	Sun 12pm	Sun 1pm	Sun 2pm	Sun 3pm	Sun 4pm	Sun 5pm	Sun 6pm	Sun 7pm	Sun 8pm	Sun 9pm	Sun 10pm	Sun 11pm	Mon 12am
610 Bridge	4 N	5 NNE	5 N	5 ENE	4 ESE	4 N	5 NNE	5 NNE	4 NNE	4 NNE	4 NNE	4 NNE	4 NNE	3 NNE	3 NNE	5 NNE	5 NNE	5 NNE	5 NNE	6 NNE	7 NNE	7 NNE	7 NNE	7 NNE	7 NNE	7 NNE	8 NNE	8 NNE	8 NNE	7 NNE	7 NNE	7 NNE	7 NNE	8 NNE	8 NNE	8 NNE
Kinder 1	4 NE	5 NNE	5 NNW	4 ESE	4 ENE	4 N	5 NNE	5 NNE	4 NNE	4 NNE	4 NNE	4 NNE	4 NNE	3 NNE	3 NNE	5 NNE	5 NNE	5 NNE	5 NNE	6 NNE	7 NNE	7 NNE	7 NNE	7 NNE	7 NNE	7 NNE	8 NNE	8 NNE	8 NNE	7 NNE	7 NNE	7 NNE	7 NNE	8 NNE	8 NNE	8 NNE
Greens Bayou	4 NE	6 N	5 SW	5 W	4 N	4 NNE	5 NNE	5 NNE	4 NNE	4 NNE	4 NNE	4 NNE	4 NNE	3 NNE	4 NNE	5 NNE	6 NNE	5 NNE	5 NNE	6 NNE	7 NNE	7 NNE	7 NNE	7 NNE	7 NNE	7 NNE	8 NNE	8 NNE	8 NNE	7 NNE	7 NNE	7 NNE	7 NNE	8 NNE	8 NNE	8 NNE
Shell Crude	5 E	6 N	5 SE	5 NW	4 N	4 NNE	5 NNE	5 NNE	4 NNE	4 NNE	4 NNE	4 NNE	4 NNE	3 NNE	4 NNE	5 NNE	6 NNE	5 NNE	5 NNE	6 NNE	7 NNE	7 NNE	7 NNE	7 NNE	7 NNE	7 NNE	8 NNE	8 NNE	8 NNE	7 NNE	7 NNE	7 NNE	7 NNE	8 NNE	8 NNE	8 NNE
Lynchburg Ferries	5 N	6 N	5 N	5 N	5 NNE	5 NNE	5 NNE	5 NNE	4 NNE	4 NNE	4 NNE	4 NNE	4 NNE	3 NNE	4 NNE	6 NNE	6 NNE	6 NNE	6 NNE	7 NNE	8 NNE	8 NNE	8 NNE	8 NNE	8 NNE	8 NNE	8 NNE	8 NNE	8 NNE	8 NNE	8 NNE	8 NNE	8 NNE	8 NNE	8 NNE	8 NNE
Exxon 3	6 NNE	6 N	5 N	5 NE	4 NNE	5 NNE	5 NNE	5 NNE	4 NNE	4 NNE	5 NNE	4 NNE	3 NNE	3 NNE	4 NNE	6 NNE	7 NNE	7 NNE	7 NNE	7 NNE	8 NNE	8 NNE	8 NNE	8 NNE	8 NNE	8 NNE	8 NNE	9 NNE	8 NNE	9 NNE	8 NNE	8 NNE	9 NNE	9 NNE	9 NNE	9 NNE
Morgans Point	7 E	7 N	5 ESE	6 WNW	5 ESE	6 N	6 NNE	6 NNE	6 NNE	6 NNE	6 NNE	5 NNE	4 NNE	5 NNE	5 NNE	8 NNE	8 NNE	8 NNE	8 NNE	8 NNE	9 NNE	9 NNE	9 NNE	9 NNE	9 NNE	9 NNE	10 NNE	10 NNE	10 NNE	10 NNE	10 NNE	10 NNE	10 NNE	10 NNE	10 NNE	10 NNE
75/76	8 ENE	8 N	7 WSW	8 S	8 ESE	8 N	10 NNE	10 NNE	10 NNE	10 NNE	10 NNE	9 NNE	8 NNE	7 NNE	8 NNE	11 NNE	12 NNE	12 NNE	12 NNE	12 NNE	12 NNE	12 NNE	12 NNE	12 NNE	12 NNE	12 NNE	12 NNE	12 NNE	12 NNE	12 NNE	12 NNE	12 NNE	12 NNE	12 NNE	12 NNE	12 NNE
63/64	9 N	9 N	8 NW	9 NNE	9 N	10 NNE	10 NNE	10 NNE	10 NNE	10 NNE	10 NNE	10 NNE	10 NNE	10 NNE	10 NNE	10 NNE	10 NNE	10 NNE	10 NNE	10 NNE	10 NNE	10 NNE	10 NNE	10 NNE	10 NNE	10 NNE	10 NNE	10 NNE	10 NNE	10 NNE	10 NNE	10 NNE	10 NNE	10 NNE	10 NNE	10 NNE
51/52	10 N	10 N	9 ESE	9 N	10 N	10 NNE	10 NNE	10 NNE	10 NNE	10 NNE	10 NNE	10 NNE	10 NNE	10 NNE	10 NNE	10 NNE	10 NNE	10 NNE	10 NNE	10 NNE	10 NNE	10 NNE	10 NNE	10 NNE	10 NNE	10 NNE	10 NNE	10 NNE	10 NNE	10 NNE	10 NNE	10 NNE	10 NNE	10 NNE	10 NNE	10 NNE
37/38	10 N	10 N	9 N	9 N	10 N	10 NNE	10 NNE	10 NNE	10 NNE	10 NNE	10 NNE	10 NNE	10 NNE	10 NNE	10 NNE	10 NNE	10 NNE	10 NNE	10 NNE	10 NNE	10 NNE	10 NNE	10 NNE	10 NNE	10 NNE	10 NNE	10 NNE	10 NNE	10 NNE	10 NNE	10 NNE	10 NNE	10 NNE	10 NNE	10 NNE	10 NNE
25/26	10 N	10 N	9 N	9 N	9 N	10 NNE	10 NNE	10 NNE	10 NNE	10 NNE	10 NNE	10 NNE	10 NNE	10 NNE	10 NNE	10 NNE	10 NNE	10 NNE	10 NNE	10 NNE	10 NNE	10 NNE	10 NNE	10 NNE	10 NNE	10 NNE	10 NNE	10 NNE	10 NNE	10 NNE	10 NNE	10 NNE	10 NNE	10 NNE	10 NNE	10 NNE
11/12	9 NNE	8 N	8 N	8 N	9 N	9 NNE	10 NNE	10 NNE	10 NNE	10 NNE	10 NNE	10 NNE	10 NNE	9 NNE	9 NNE	10 NNE	10 NNE	10 NNE	10 NNE	10 NNE	10 NNE	10 NNE	10 NNE	10 NNE	10 NNE	10 NNE	10 NNE	10 NNE	10 NNE	10 NNE	10 NNE	10 NNE	10 NNE	10 NNE	10 NNE	10 NNE
1 & 2 Bravo	10 N	9 NNE	9 NNE	10 NNE	10 NNE	10 NNE	10 NNE	10 NNE	10 NNE	10 NNE	10 NNE	10 NNE	10 NNE	10 NNE	10 NNE	10 NNE	10 NNE	10 NNE	10 NNE	10 NNE	10 NNE	10 NNE	10 NNE	10 NNE	10 NNE	10 NNE	10 NNE	10 NNE	10 NNE	10 NNE	10 NNE	10 NNE	10 NNE	10 NNE	10 NNE	10 NNE

NOTE: This is automated data that may/may not agree with the official BAM thinking that's found on the daily slides.
This data should be used as a guide only

Houston Pilots: sat. 11/11/2023

Forecast Discussion

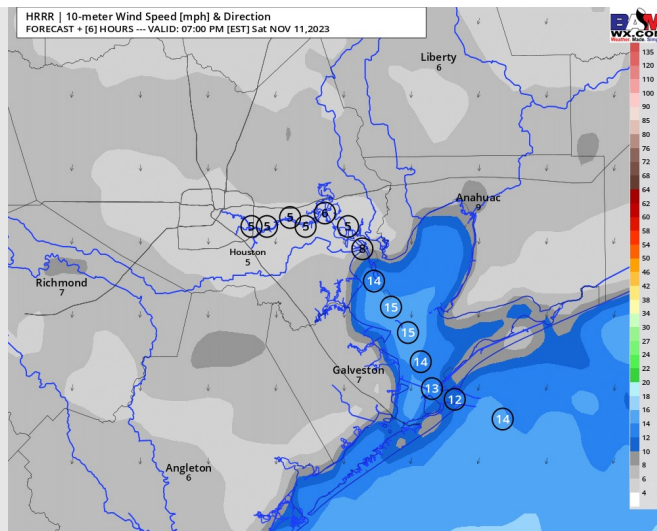
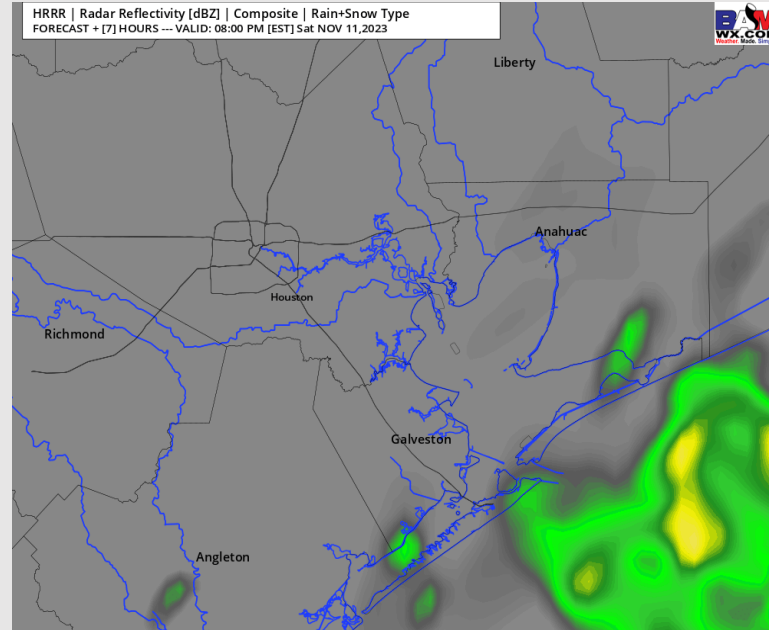
Precip: Anticipating dry conditions until 3 PM this afternoon. After 3 PM, chances will be hit/miss at 20-30% for the remainder of the afternoon/evening (best chances to see rain near the Boarding Station). Better coverage will remain to the west and south.

Wind: Winds will be out of the NE for the rest of the day. **N of Morgan's Point:** Winds will remain at 5 - 8 kts, while at stations **S of Morgan's Point**, winds at 11 - 16kts will continue the rest of the PM.

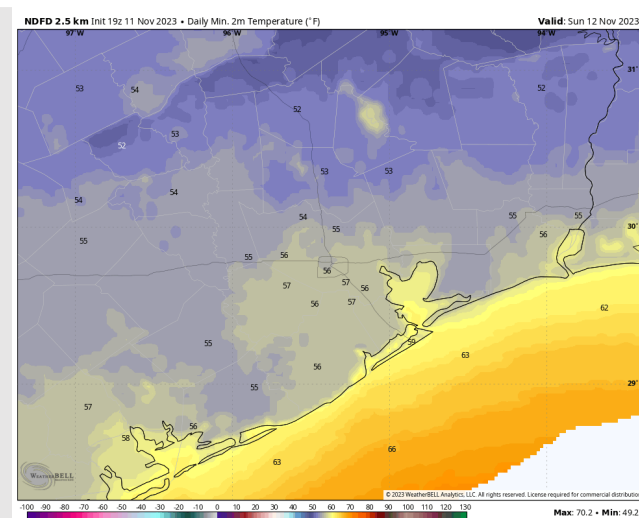
Low Temps: **N of Morgan's Point:** Mid 50's F. **S of Morgan's Point:** Low 60s F.

Visibility: No reduced visibility is expected the rest of the day.

Precip Image: 7 PM CT



Wind Speed:
6 PM CT



Low Temps
SUN AM

Houston Pilots: Sun. 11/12/2023

Forecast Discussion

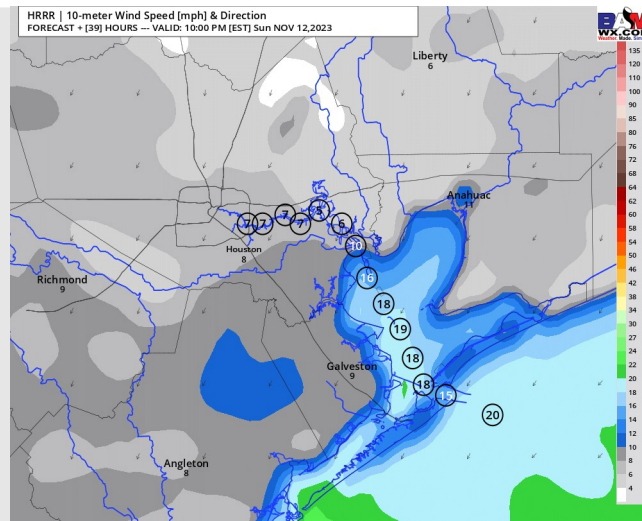
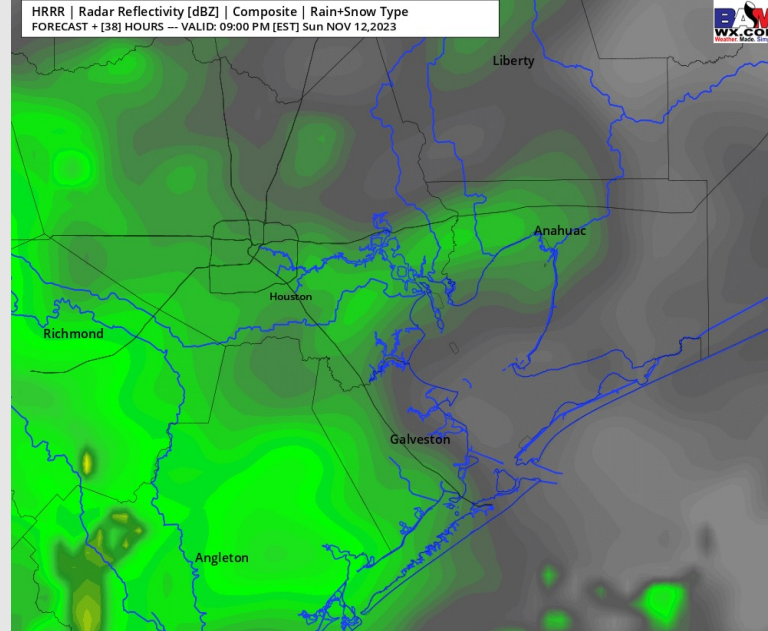
Precip: Hit/miss rain showers from Saturday PM will continue through the early AM, with coverage tapering to isolated drizzle by 6 AM. The best dry time will arrive from 12 PM - 5 PM with very isolated pockets of drizzle before another wave of moderate rain rolls in. Data in high agreement for the wave to arrive towards 5 PM. Coverage will gradually increase for the remainder of the PM.

Wind: Winds will be out of the NE throughout the day SUN. **N of Morgan's Point:** Winds will be at 4 - 9 kts throughout the entirety of the day **S of Morgan's Point:** Winds will be at 13-18 kts throughout the majority of the day, with an increase to 16 - 21 kts after 9 PM. **Wind gusts of 22 - 27 kts will be for the boarding station throughout the day.**

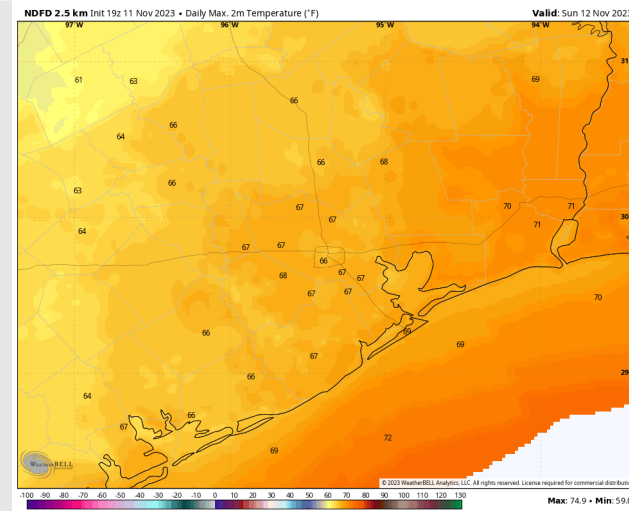
High Temps: **N of Morgan's Point:** Upper 60s F. **S of Morgan's Point:** Near 70F.

Visibility: Not anticipating any visibility concerns for Sunday.

Precip Image: 8 PM CT



Wind Speed:
9 PM CT



High Temps
Sunday

Houston Pilots: Mon. 11/13/2023

Forecast Discussion

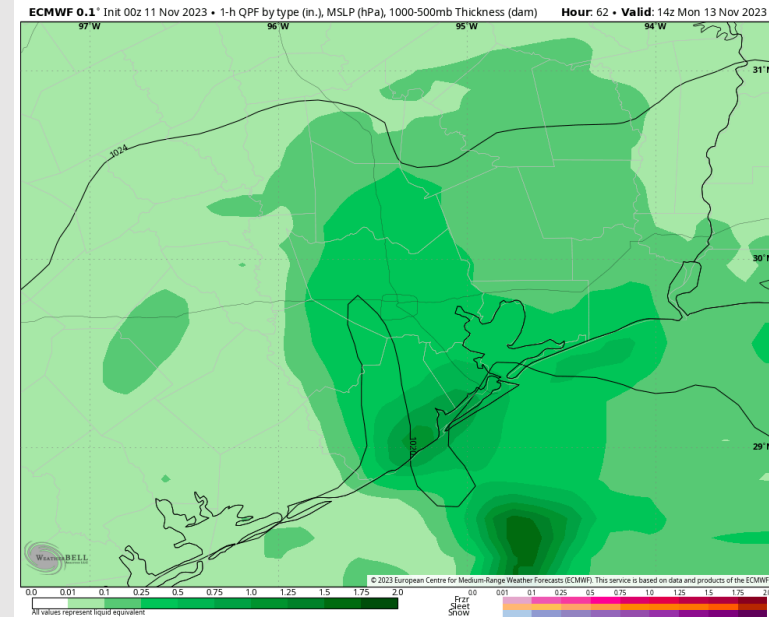
Precip: Widespread moderate/heavy showers will continue through 3 PM on MON. After 3 PM, coverage will gradually decrease with dry conditions after 7 PM (lingering hit/miss showers still possible near Boarding Station).

Wind: Winds will be out of the N/NE throughout Monday. **N of Morgan's Point:** Winds will increase throughout the early AM, reaching 10-15kts by 6 AM and remaining there the rest of the day (slight increase to 13-18kts from 10 AM to 1 PM). **S of Morgan's Point:** Winds at 18-23 kts through 6 AM MON before increasing to 22-27 kts. Winds continue to increase in the early PM to 25-30 kts. **Wind gusts of 30-35 kts will be possible near the Boarding Station all day and up to 33 - 38 kts between 7 AM and 3 PM. Other stations S of Morgan's Point will be 30-35 kts from 7 AM to 3 PM as well.**

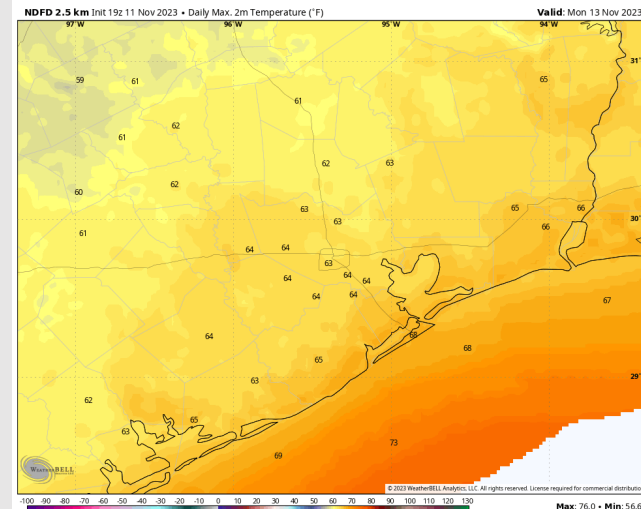
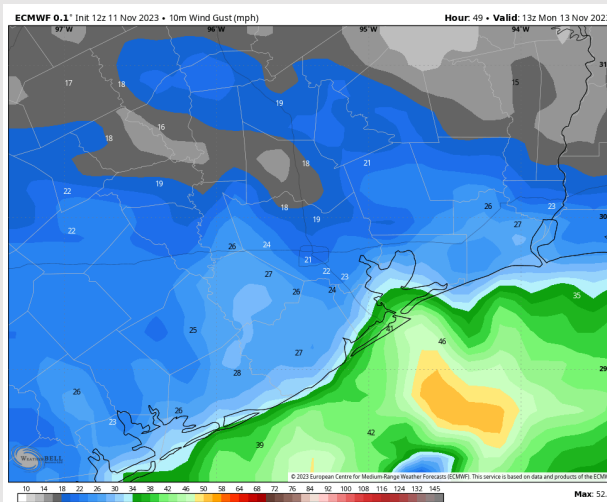
High Temps: **N of Morgan's Point:** Mid 60s F. **S of Morgan's Point:** Upper 60s F.

Visibility: No fog concerns favored, however heavy rainfall may slightly reduce visibilities for all Stations.

Precip Image: 10 AM CT



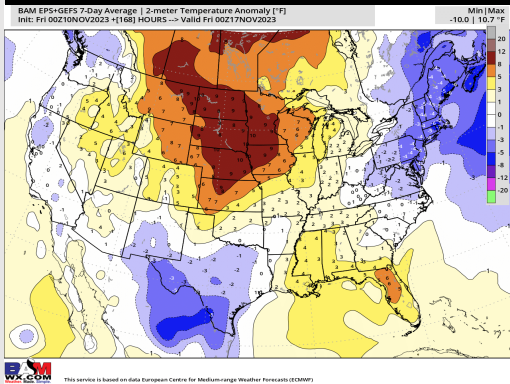
**Wind Gusts:
7 AM CT**



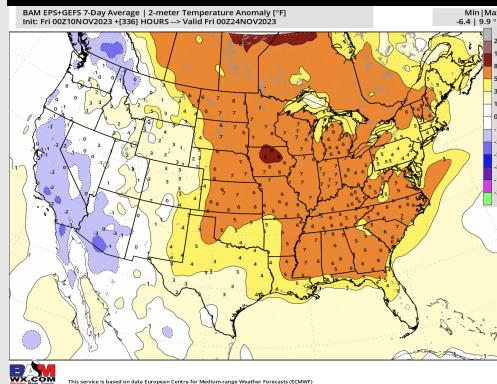
**High Temps
Monday**

Houston Pilots: 11/11/23

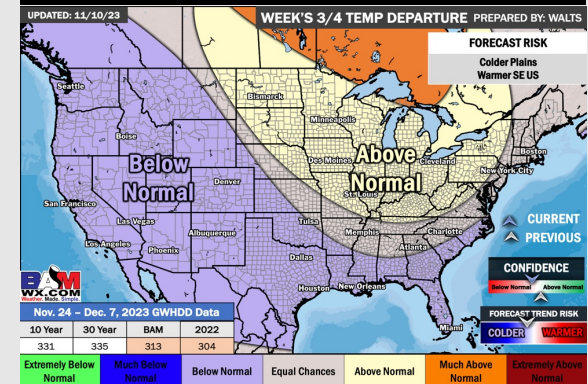
Next 7 Day Temperature Departure



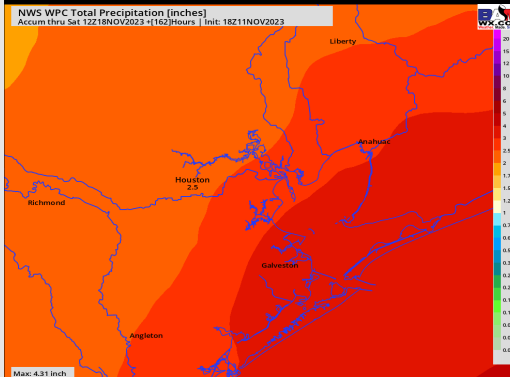
8-14 Day Temperature Departure



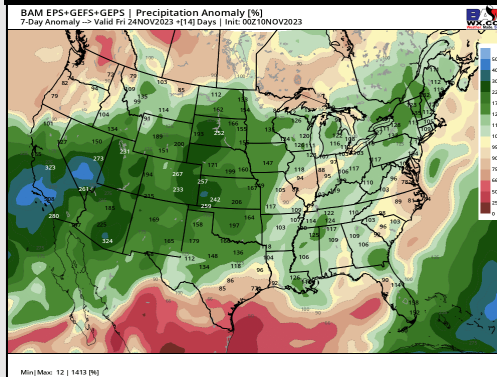
15-30 Day Temperature Departure



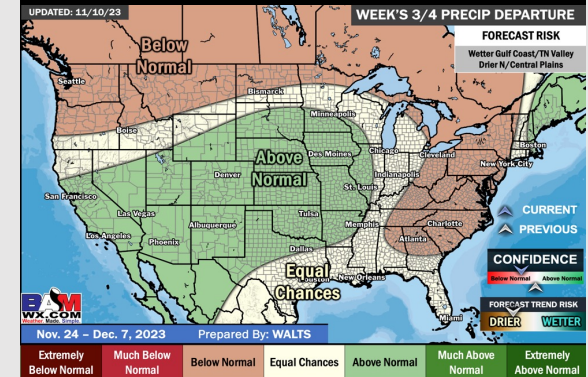
Next 7 Day Total Precipitation



8-14 Day % of Average Precip.



15-30 Day % of Average Precip.



- Moderate to heavy rain chances expected to be a continued risk through MON as a cold front stalls overhead. Conditions will dry out by Tuesday AM. Seasonal temperatures returning this weekend as well, putting week 1 temps near normal.
- Slightly below normal rainfall and above normal temperatures are expected into the week 2 timeframe.
- Below normal temperatures and near normal chances for precipitation are favored in the weeks 3/4 timeframe.