

# Houston Pilots Forecast Package



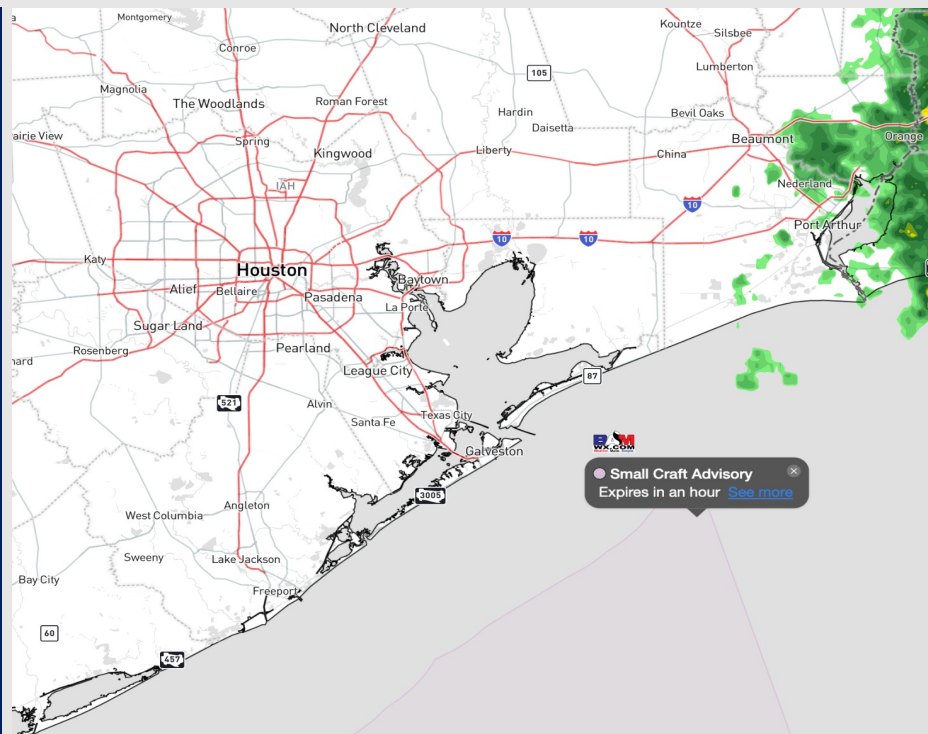
Updated: 2:15 PM CT

Tuesday, November 14, 2023

Forecaster: John Kemper

## Weather Headlines

- Dry conditions are anticipated for majority of locations for the next 72 hours outside.
- As winds decrease S of Morgan's Point, calmer winds are expected over the next few days.
- **Wave heights will continue to decrease throughout the rest of the evening. More details on slide below.**



**Radar/NWS Alerts: 2:10 PM CT**

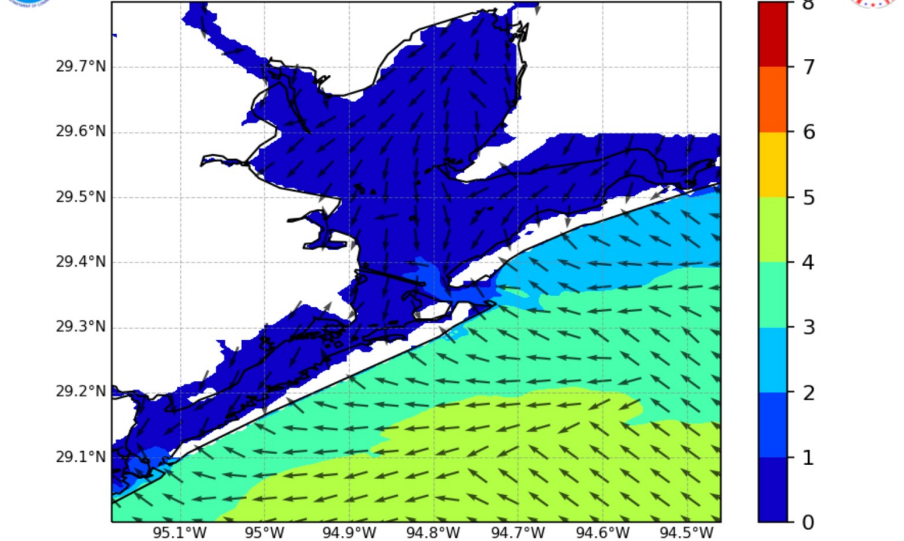


As always, please do not hesitate to reach out to us with any forecast questions via the chat option on the Weather Porthole or our on-call number, **(317)-560-8122** press 1 for forecast questions.

# Houston Pilots Wave Height Update

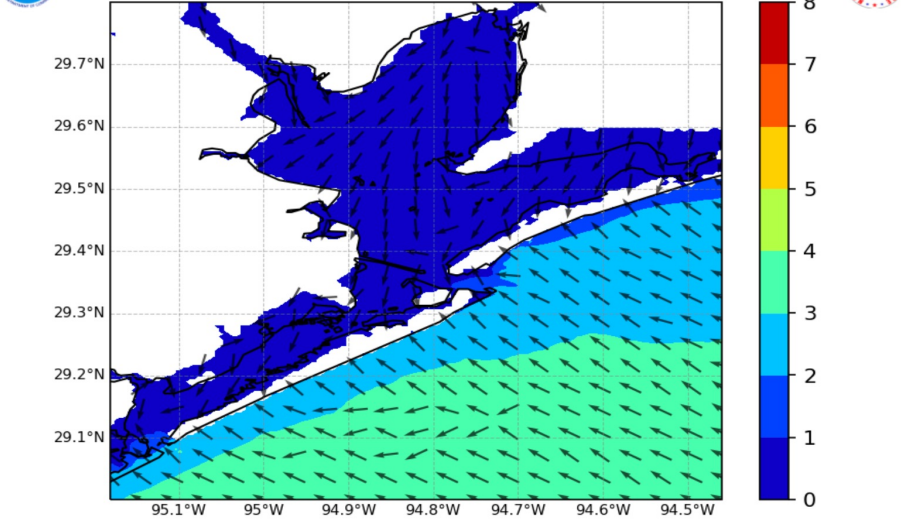
## Significant Wave Height Image

NWPS Significant Wave Height (ft) and Peak Wave Direction  
Hour 12 (00Z15NOV2023)



6 PM CST Tuesday  
Evening

NWPS Significant Wave Height (ft) and Peak Wave Direction  
Hour 21 (09Z15NOV2023)



3 AM CST  
Wednesday Morning

The top left image shows wave heights around 6 PM CST this evening. Wave heights will continue to gradually decrease throughout the PM hours TUE. WED AM wave heights (lower left image) anticipated to be 2 - 3 feet.

Heights are not expected to exceed 3 feet the rest of the evening / overnight, with the boarding station as the only location impacted by these wave heights.

# Houston Pilots Extended Range Visibility Report



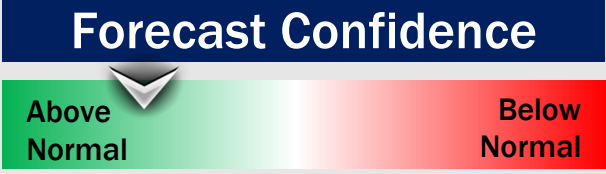
## Friday 11/17/23

No visibility concerns Friday via sea fog, but radiational fog (fog over land or north of Morgan's Point) will be possible. Very low confidence as this is 3 days out.



## Saturday 11/18/23

No visibility concerns Saturday.



## Sunday 11/19/23

No visibility concerns Sunday.



## Chance for Fog

Friday AM	Low-End
Friday PM	Unlikely
Saturday AM	Unlikely
Saturday PM	Unlikely
Sunday AM	Unlikely
Sunday PM	Unlikely

# Houston Pilots Visibility Chart (miles)



Time	Tue 1pm	Tue 2pm	Tue 3pm	Tue 4pm	Tue 5pm	Tue 6pm	Tue 7pm	Tue 8pm	Tue 9pm	Tue 10pm	Tue 11pm	Wed 12am	Wed 1am	Wed 2am	Wed 3am	Wed 4am	Wed 5am	Wed 6am	Wed 7am	Wed 8am	Wed 9am	Wed 10am	Wed 11am	Wed 12pm	Wed 1pm	Wed 2pm	Wed 3pm	Wed 4pm	Wed 5pm	Wed 6pm	Wed 7pm	Wed 8pm	Wed 9pm	Wed 10pm	Wed 11pm	Thu 12am		
610 Bridge	10	10	10	10	10	10	10	10	10	10	10	10	10	10	10	10	10	10	10	10	10	10	10	10	10	10	10	10	10	10	10	10	10	10	10	10	10	10
Kinder 1	10	10	10	10	10	10	10	10	10	10	10	10	10	10	10	10	10	10	10	10	10	10	10	10	10	10	10	10	10	10	10	10	10	10	10	10	10	10
Greens Bayou	10	10	10	10	10	10	10	10	10	10	10	10	10	10	10	10	10	10	10	10	10	10	10	10	10	10	10	10	10	10	10	10	10	10	10	10	10	10
Shell Crude	10	10	10	10	10	10	10	10	10	10	10	10	10	10	10	10	10	10	10	10	10	10	10	10	10	10	10	10	10	10	10	10	10	10	10	10	10	10
Lynchburg Ferries	10	10	10	10	10	10	10	10	10	10	10	10	10	10	10	10	10	10	10	10	10	10	10	10	10	10	10	10	10	10	10	10	10	10	10	10	10	10
Exxon 3	10	10	10	10	10	10	10	10	10	10	10	10	10	10	10	10	10	10	10	10	10	10	10	10	10	10	10	10	10	10	10	10	10	10	10	10	10	10
Morgans Point	10	10	10	10	10	10	10	10	10	10	10	10	10	10	10	10	10	10	10	10	10	10	10	10	10	10	10	10	10	10	10	10	10	10	10	10	10	10
75/76	10	10	10	10	10	10	10	10	10	10	10	10	10	10	10	10	10	10	10	10	10	10	10	10	10	10	10	10	10	10	10	10	10	10	10	10	10	10
63/64	10	10	10	10	10	10	10	10	10	10	10	10	10	10	10	10	10	10	10	10	10	10	10	10	10	10	10	10	10	10	10	10	10	10	10	10	10	10
51/52	10	10	10	10	10	10	10	10	10	10	10	10	10	10	10	10	10	10	10	10	10	10	10	10	10	10	10	10	10	10	10	10	10	10	10	10	10	10
37/38	10	10	10	10	10	10	10	10	10	10	10	10	10	10	10	10	10	10	10	10	10	10	10	10	10	10	10	10	10	10	10	10	10	10	10	10	10	10
25/26	10	10	10	10	10	10	10	10	10	10	10	10	10	10	10	10	10	10	10	10	10	10	10	10	10	10	10	10	10	10	10	10	10	10	10	10	10	10
11/12	10	10	10	10	10	10	10	10	10	10	10	10	10	10	10	10	10	10	10	10	10	10	10	10	10	10	10	10	10	10	10	10	10	10	10	10	10	10
1 & 2 Bravo	10	10	10	10	10	10	10	10	10	10	10	10	10	10	10	10	10	10	10	9	9	9	9	9	9	9	9	10	10	10	10	10	10	10	10	10	10	10

**NOTE: This is automated data that may/may not agree with the official BAM thinking that's found on the daily slides or special visibility report slides. This data should be used as a guide only**

# Houston Pilots Wind Chart



## Forecast Confidence



## Example

Sustained wind 13 Knots  
Gusts 18 Knots  
Wind from the N

WS: 13  
G:18  
N

Time Knots	Tue 1pm	Tue 2pm	Tue 3pm	Tue 4pm	Tue 5pm	Tue 6pm	Tue 7pm	Tue 8pm	Tue 9pm	Tue 10pm	Tue 11pm	Wed 12am	Wed 1am	Wed 2am	Wed 3am	Wed 4am	Wed 5am	Wed 6am	Wed 7am	Wed 8am	Wed 9am	Wed 10am	Wed 11am	Wed 12pm	Wed 1pm	Wed 2pm	Wed 3pm	Wed 4pm	Wed 5pm	Wed 6pm	Wed 7pm	Wed 8pm	Wed 9pm	Wed 10pm	Wed 11pm	Thu 12am
610 Bridge	5 NNE	4 NE	3 ENE	3 NNE	3 NNE	4 WNW	4 E	3 NNE	2 NNE	2 ESE	2 NE	2 NE	2 ESE	2 NNW	2 NNW	4 N	4 N	4 N	4 N	4 NW	5 ENE	6 N	7 ESE	7 ESE	7 N	7 E	7 N	8 N	7 NNE	7 N	6 N	5 N	5 N	4 NNE	4 NNE	
Kinder 1	5 NNE	4 NE	3 E	3 NNE	3 NNE	2 SW	2 NE	2 NNE	1 NNE	1 E	2 NNE	2 SSW	2 NNW	2 NNW	4 NNW	4 N	4 N	4 N	4 N	5 SSE	6 N	7 S	7 S	7 N	7 N	7 N	8 NNE	7 N	6 N	5 N	5 N	4 NNE	4 NNE			
Greens Bayou	5 NE	4 NE	3 ENE	3 E	3 NNE	3 ESE	3 NNE	3 NNE	2 NNE	1 NNE	1 NE	2 NNW	2 NNW	2 NNW	4 NNW	4 N	4 N	4 N	4 N	5 WSW	6 WSW	7 WSW	7 NW	7 NW	7 N	7 SSE	7 SSW	7 N	6 N	5 N	5 NNE	4 NNE				
Shell Crude	5 NE	4 NE	3 ENE	3 SE	3 ENE	3 ENE	3 NNE	3 NNE	2 NNE	1 NNE	1 ENE	2 NNW	2 NNW	2 NNW	4 NNW	4 N	4 N	4 N	4 N	5 NNW	6 NE	7 NW	7 NW	7 NNE	7 N	7 N	8 W	7 NNW	6 NNE	5 N	5 NNE	4 NNE				
Lynchburg Ferries	5 NE	4 NE	3 NNE	3 SSW	3 NE	3 NNE	3 NE	3 NNE	2 NNE	1 NNE	1 SSE	2 ESE	2 NNW	2 NNW	4 NNW	4 NW	4 NW	4 WNW	4 WNW	5 WNW	6 SSW	7 NNE	7 SSE	7 SE	7 NE	7 N	8 NNW	7 N	6 N	5 N	5 N	4 NNE	4 NNE			
Exxon 3	5 NE	4 NE	3 ENE	3 SW	3 NE	3 NNE	3 NNE	3 NNE	2 NNE	1 NNE	1 SSE	2 SSE	2 NNW	2 NNW	4 NNW	4 W	4 W	4 W	4 W	5 W	6 ENE	7 SSE	7 SSE	7 SW	7 N	7 ENE	8 N	7 SSW	6 N	5 N	5 NNE	4 NNE				
Morgans Point	5 NE	6 NE	4 ENE	4 SW	4 NE	4 NNE	4 NNE	4 NNE	3 NNE	3 NNE	3 NNE	3 SW	3 SSE	3 NNW	3 NNW	6 W	6 W	6 W	6 W	7 SW	7 ENE	7 SSE	7 SSE	7 SW	7 N	8 ENE	8 N	7 SSW	6 N	5 N	5 NNE	4 NNE				
75/76	7 NE	8 NE	5 NE	5 NE	6 NNE	7 NNE	7 NNE	8 NNE	8 NNE	7 NNE	6 NNE	7 NNE	5 NNE	5 NNE	6 NNE	8 NNE	8 NNE	8 NNE	8 NNE	9 NNE	9 NNE	9 NNE	9 NNE	9 NNE	9 NNE	9 NNE	9 NNE	9 NNE	9 NNE	9 NNE	9 NNE	9 NNE	9 NNE			
63/64	9 NE	11 NE	8 NE	8 NNE	8 NNE	10 NNE	10 NNE	10 NNE	9 NNE	8 NNE	8 NNE	8 NNE	7 NNE	6 NNE	7 NNE	8 NNE	8 NNE	8 NNE	8 NNE	9 NNE	9 NNE	9 NNE	9 NNE	9 NNE	9 NNE	9 NNE	9 NNE	9 NNE	9 NNE	9 NNE	9 NNE	9 NNE	9 NNE	9 NNE		
51/52	9 NNE	9 NNE	7 NNE	8 ENE	8 NNE	8 NNE	9 NNE	9 NNE	10 NNE	10 NNE	9 NNE	9 NNE	8 NNE	8 NNE	7 NNE	8 NNE	8 NNE	8 NNE	8 NNE	9 NNE	9 NNE	9 NNE	9 NNE	9 NNE	9 NNE	9 NNE	9 NNE	9 NNE	9 NNE	9 NNE	9 NNE	9 NNE	9 NNE	9 NNE	9 NNE	
37/38	9 NNE	11 NE	8 NE	10 SSW	10 NNE	11 NNE	11 NNE	11 NNE	12 NNE	12 NNE	14 NNE	14 NNE	15 NNE	15 NNE	14 NNE	12 NNE	11 NNE	11 NNE	11 NNE	11 NNE	11 NNE	11 NNE	11 NNE	11 NNE	11 NNE	11 NNE	11 NNE	11 NNE	11 NNE	11 NNE	11 NNE	11 NNE	11 NNE	11 NNE	11 NNE	
25/26	8 NE	11 NE	7 NE	8 NNE	8 NNE	9 NNE	9 NNE	9 NNE	10 NNE	10 NNE	9 NNE	9 NNE	8 NNE	8 NNE	8 NNE	8 NNE	8 NNE	8 NNE	8 NNE	9 NNE	9 NNE	9 NNE	9 NNE	9 NNE	9 NNE	9 NNE	9 NNE	9 NNE	9 NNE	9 NNE	9 NNE	9 NNE	9 NNE	9 NNE	9 NNE	
11/12	9 NE	11 NE	8 NE	9 NNE	9 NNE	11 NNE	11 NNE	11 NNE	12 NNE	12 NNE	13 NNE	13 NNE	14 NNE	14 NNE	15 NNE	13 NNE	12 NNE	10 NNE	10 NNE	10 NNE	10 NNE	10 NNE	10 NNE	10 NNE	10 NNE	10 NNE	10 NNE	10 NNE	10 NNE	10 NNE	10 NNE	10 NNE	10 NNE	10 NNE	10 NNE	
1 & 2 Bravo	11 NE	12 NE	10 NE	9 SE	9 NNE	11 NNE	11 NNE	11 NNE	12 NNE	12 NNE	13 NNE	13 NNE	13 NNE	13 NNE	13 NNE	12 NNE	10 NNE	9 NNE	9 NNE	9 NNE	9 NNE	9 NNE	9 NNE	9 NNE	9 NNE	9 NNE	9 NNE	9 NNE	9 NNE	9 NNE	9 NNE	9 NNE	9 NNE	9 NNE	9 NNE	

NOTE: This is automated data that may/may not agree with the official BAM thinking that's found on the daily slides. This data should be used as a guide only



## Forecast Discussion

**Precip:** Favoring dry conditions for the remainder of the day.

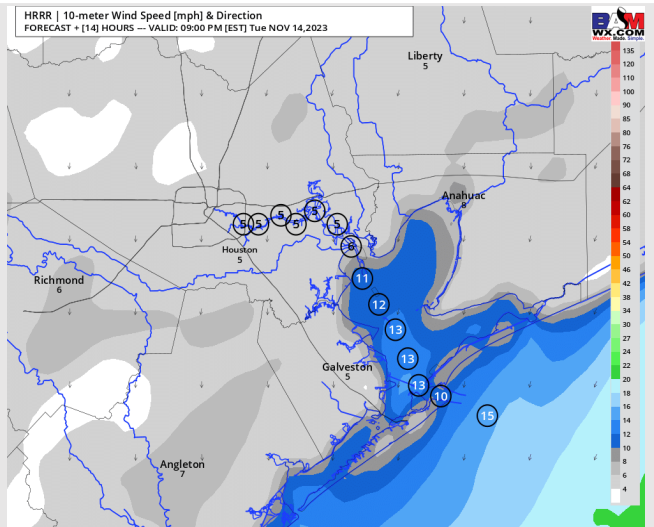
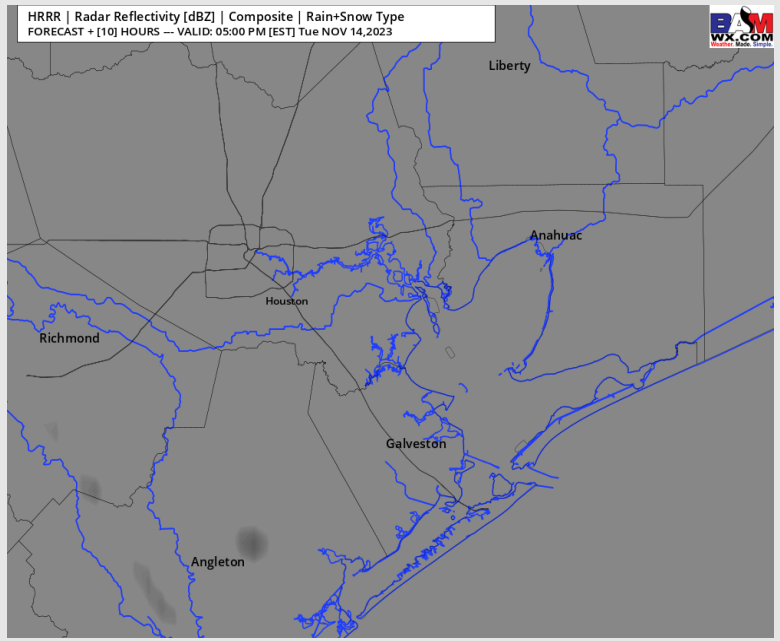
**Wind:** Winds will be out of the N/NNE for the remainder of the day. **N of Morgan's Point:** Winds will be at 5 - 8 kts through for the duration of the late afternoon / evening. **S of Morgan's Point:** Winds will be 10-15kts through the evening.

**Boarding Station** Winds will be 13 - 17 kts through 9PM before decreasing to 10-15kts. Gusts of up to 17 - 21 kts will be possible through 9PM for the Boarding Station as well.

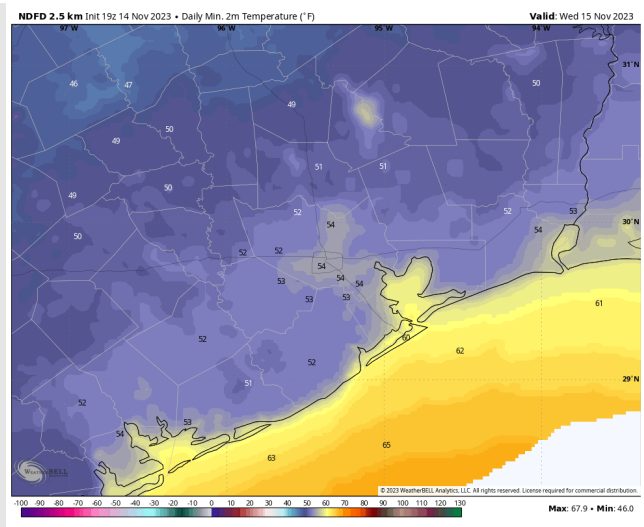
**Low Temps:** **N of Morgan's Point:** Mid 50's F. **S of Morgan's Point:** Lower 60s F.

**Visibility:** No reduced visibility is expected for today.

## Precip Image: 4 PM CT



Wind Speed:  
8 PM CT



Low Temps  
Wed

## Forecast Discussion

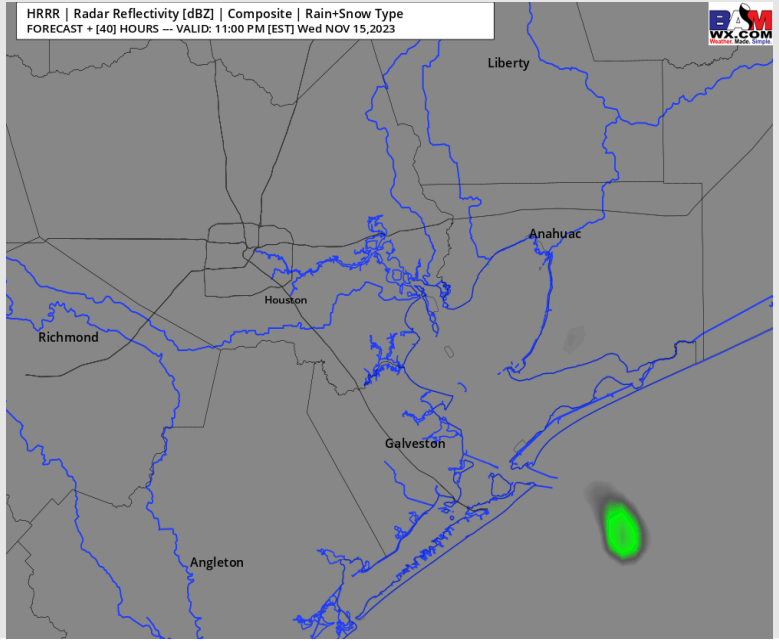
**Precip:** Favoring dry conditions throughout the day Wednesday, outside of an isolated sprinkle chance for the Boarding station after 10PM.

**Wind:** Winds will be out of the N/NW throughout Wednesday. **N of Morgan's Point:** Winds will be at 3 - 7 kts through 9 AM , 4 - 8 kts from 10 - 4 PM. Winds return to 3 - 7 kts after 4 PM. **S of Morgan's Point:** Winds will be at 9 -14 kts through 2 PM before a slight decrease to 7-11 kts, except for the Boarding Station remaining at 9 - 14 kts.

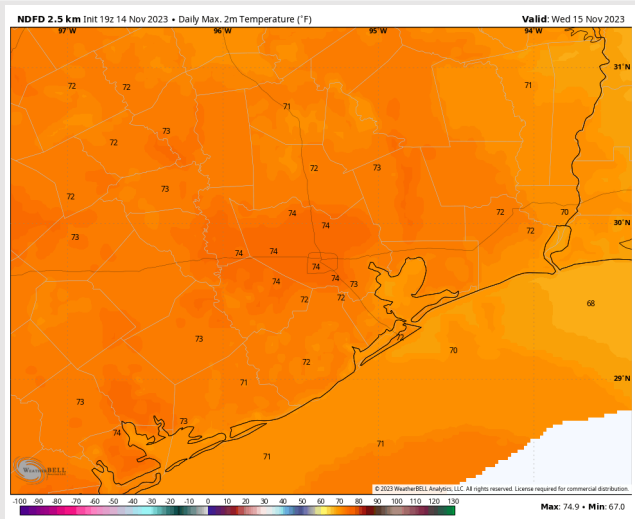
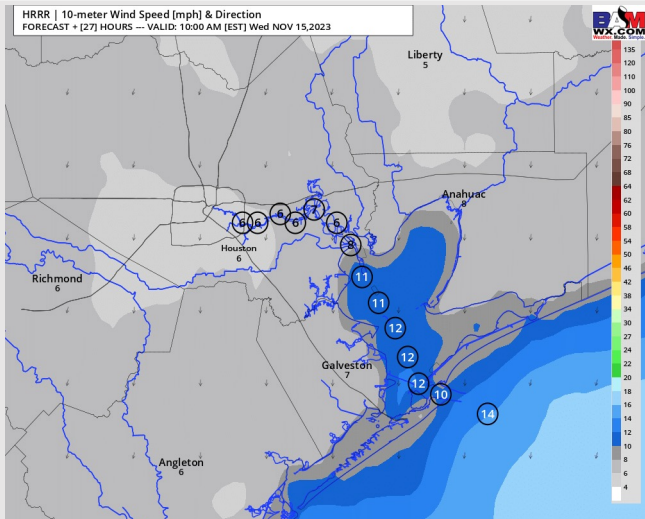
**High Temps:** **N of Morgan's Point:** Low to mid 70s F. **S of Morgan's Point:** Low 70s F

**Visibility:** Not anticipating any visibility concerns for WED.

## Precip Image: 10 PM CT



Wind Speed:  
9 AM CT



High Temps  
Wednesday

## Forecast Discussion

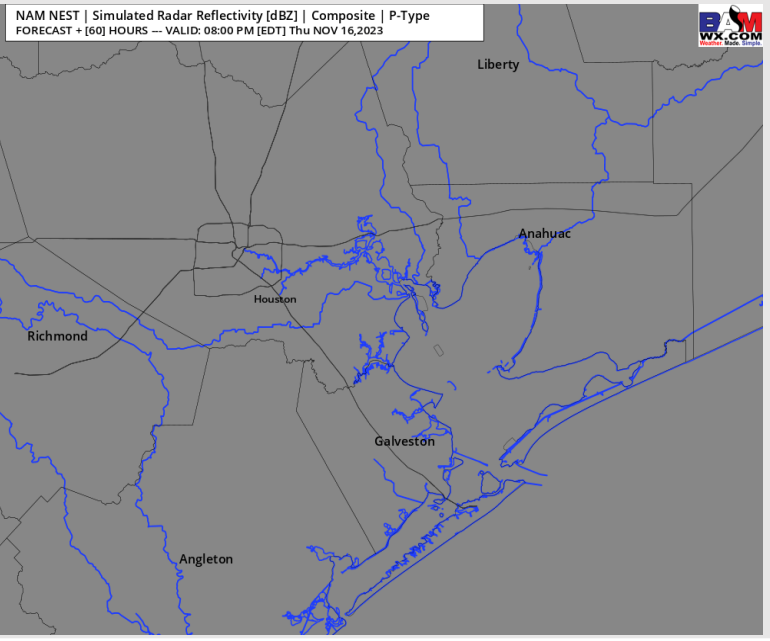
**Precip:** Dry conditions persist into Thursday.

**Wind:** Winds will be out of the N/NNE through 4 PM. After 4 PM, winds will become variable through 9 PM before being out of the SE. During the shift from NNE to SE winds (4 - 9 PM) winds will be near calm at all stations. **N of Morgan's Point:** Outside of the wind shift, winds will be at 3-7 kts. **S of Morgan's Point:** Winds will be at 8-13 kts through 12 PM before decreasing to 4-9 kts during the PM hours.

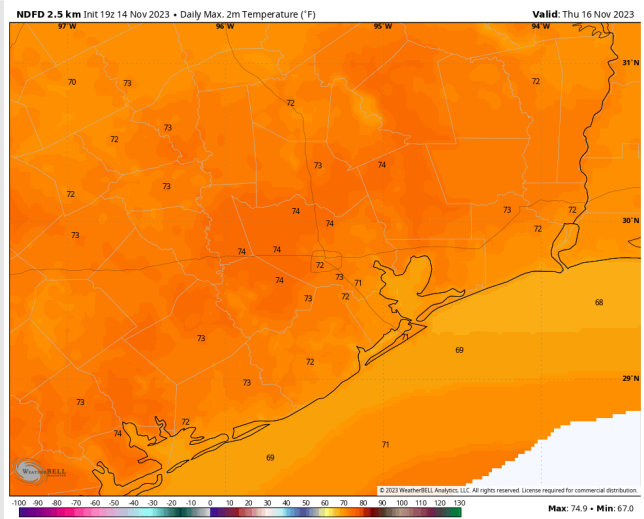
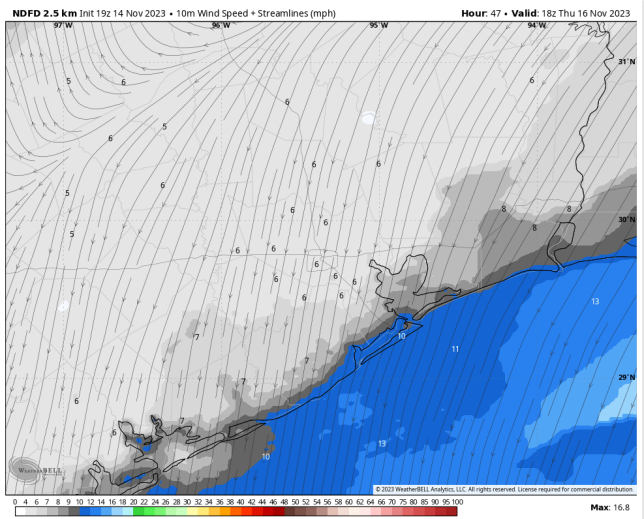
**High Temps:** **N of Morgan's Point:** Low 70s F. **S of Morgan's Point:** Upper 60s F to 70 F.

**Visibility:** No fog concerns favored for THU.

## Precip Image: 7 PM CT



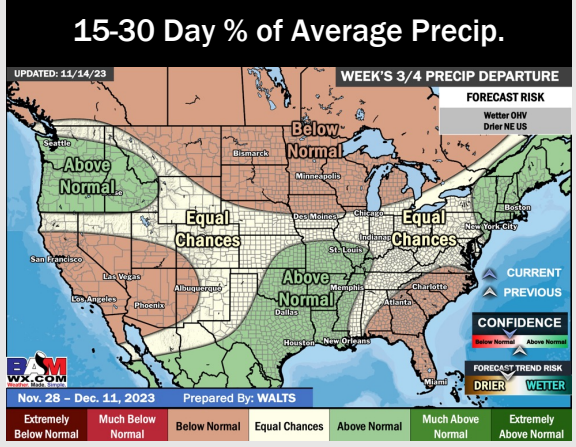
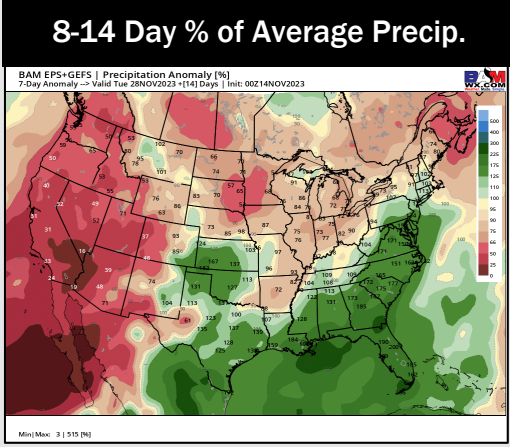
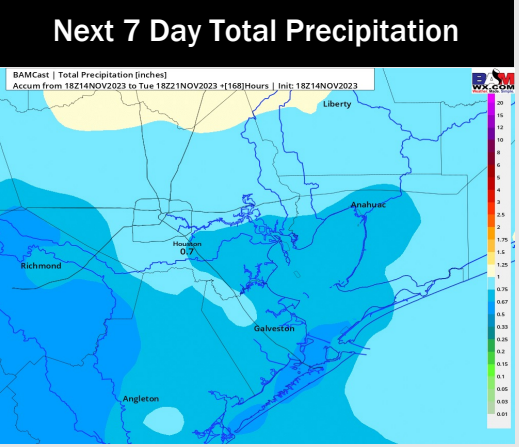
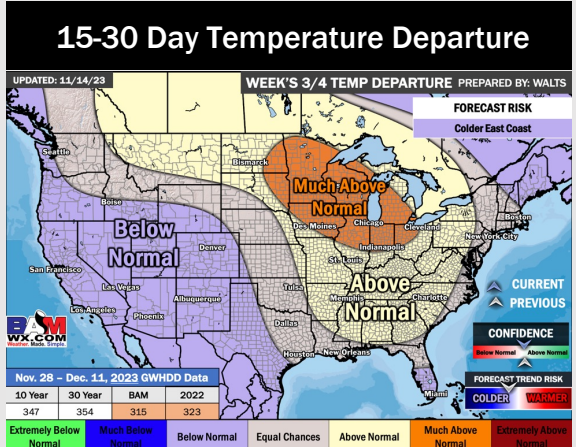
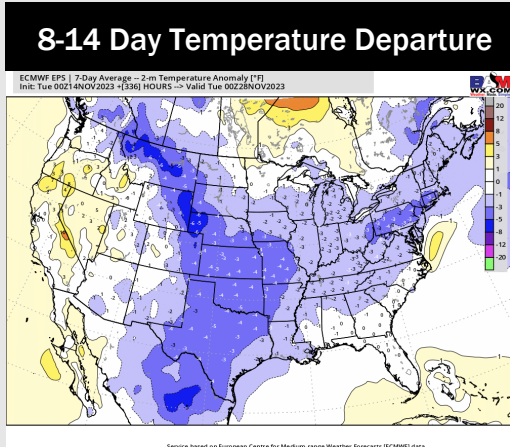
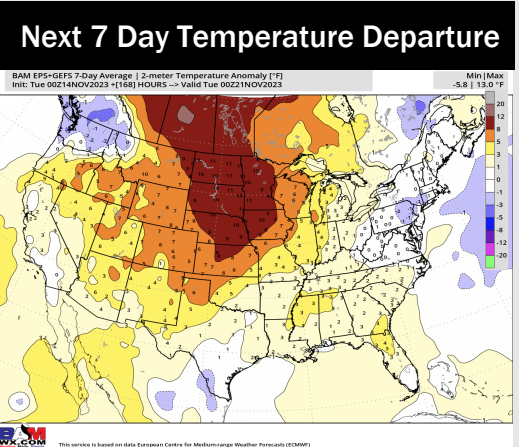
Wind Speed:  
12 PM CT



High Temps  
Thursday



# Houston Pilots: 11/14/23



- A drier 72-hour period is upcoming with isolated drizzle exiting this AM. Worth watching Friday for low end rain chances via a cold front, but favoring precipitation to stay to the NE. Next system enters on Sunday. Seasonal temperatures will be in store this week.
- Below normal rainfall and seasonable temperatures are expected into the week 2 timeframe.
- Below normal temperatures and near normal chances for precipitation are favored in the weeks 3/4 timeframe.