

Houston Pilots Forecast Package



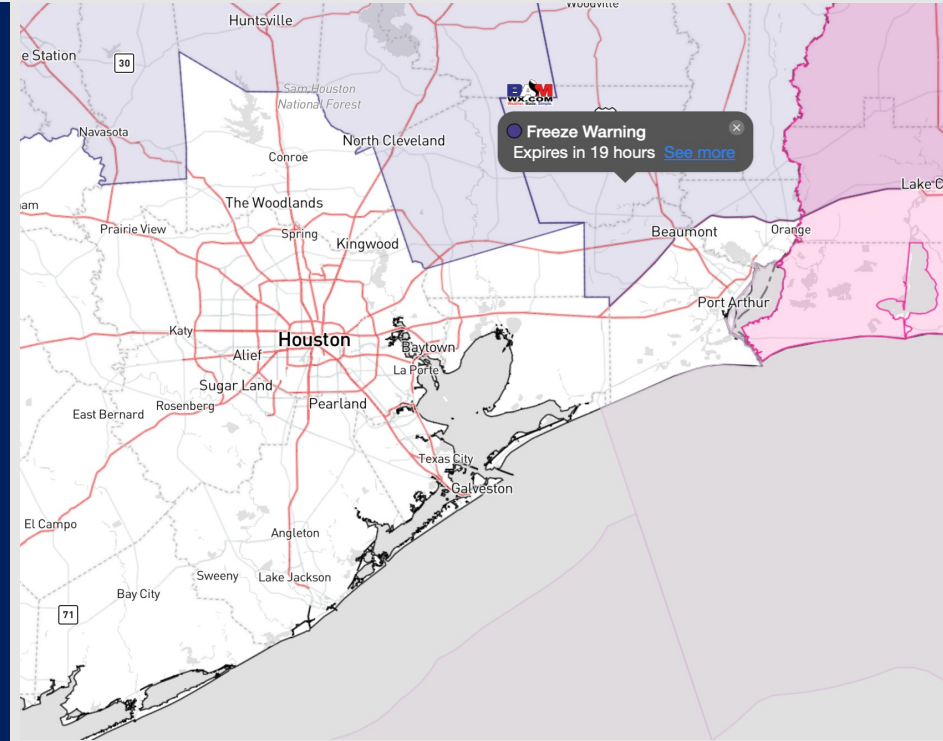
Updated: 2:30 PM CT

Wednesday, November 1, 2023

Forecaster: Alyssa Elliott

Weather Headlines

- **Waves at the Boarding Station have decreased to 2-4 ft in heights and will continue to decrease to 1-3 ft moving into the evening.**
- **Aside from minor precip chances this weekend (that look to mainly come west of the area), a drier pattern is favored over the coming days.**
- **No visibility concerns the next few days.**
- **No tropical concerns on the horizon.**



Radar/NWS Alerts: 2:05 PM CT



As always, please do not hesitate to reach out to us with any forecast questions via the chat option on the Weather Porthole or our on-call number, **(317)-560-8122** press 1 for forecast questions.

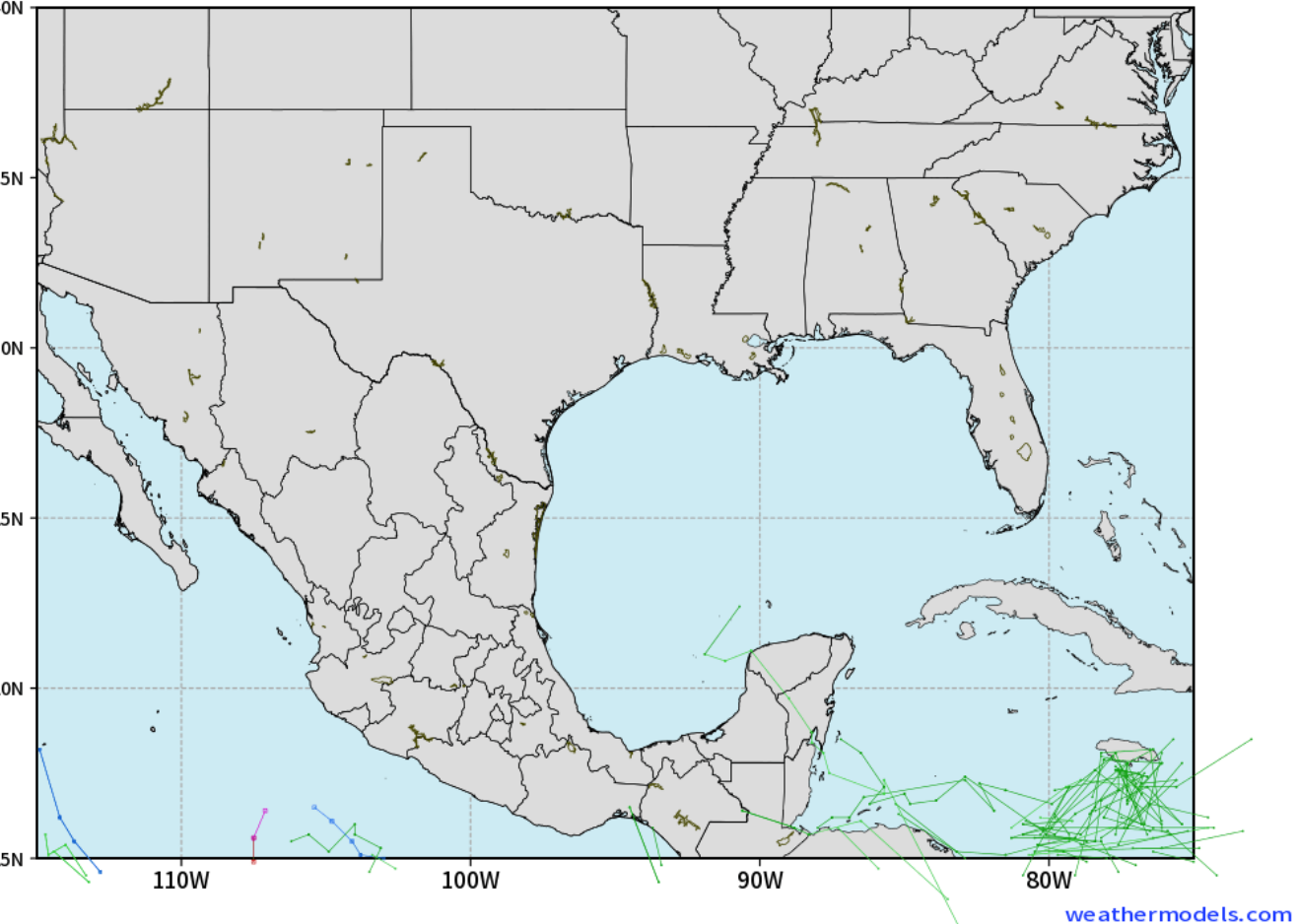
Houston Pilots Tropical Update



European Model Next 10 Days Tropical Tracks

ECMWF GULF EPS Cyclone Locations --> Next [10-days]
INIT: 00Z01NOV2023 --> UNTIL 00Z11NOV2023

- o-o ENSEMBLE MEAN
- o-o 1000 - 1010 hPa
- o-o 980 - 999 hPa
- o-o 960 - 979 hPa
- o-o 950 - 959 hPa
- o-o < 950 hPa



Tropical Development in the Gulf of Mexico is not favored in the next 7-10 days.

Houston Pilots Visibility Chart (miles)



Forecast Confidence

Above Normal

Below Normal

Time	Wed 12pm	Wed 1pm	Wed 2pm	Wed 3pm	Wed 4pm	Wed 5pm	Wed 6pm	Wed 7pm	Wed 8pm	Wed 9pm	Wed 10pm	Wed 11pm	Thu 12am	Thu 1am	Thu 2am	Thu 3am	Thu 4am	Thu 5am	Thu 6am	Thu 7am	Thu 8am	Thu 9am	Thu 10am	Thu 11am	Thu 12pm	Thu 1pm	Thu 2pm	Thu 3pm	Thu 4pm	Thu 5pm	Thu 6pm	Thu 7pm	Thu 8pm	Thu 9pm	Thu 10pm	Thu 11pm
610 Bridge	10	10	10	10	10	10	10	10	10	10	10	10	10	10	10	10	10	10	10	10	10	10	10	10	10	10	10	10	10	10	10	10	10	10	10	10
Kinder 1	10	10	10	10	10	10	10	10	10	10	10	10	10	10	10	10	10	10	10	10	10	10	10	10	10	10	10	10	10	10	10	10	10	10	10	10
Greens Bayou	10	10	10	10	10	10	10	10	10	10	10	10	10	10	10	10	10	10	10	10	10	10	10	10	10	10	10	10	10	10	10	10	10	10	10	10
Shell Crude	10	10	10	10	10	10	10	10	10	10	10	10	10	10	10	10	10	10	10	10	10	10	10	10	10	10	10	10	10	10	10	10	10	10	10	10
Lynchburg Ferries	10	10	10	10	10	10	10	10	10	10	10	10	10	10	10	10	10	10	10	10	10	10	10	10	10	10	10	10	10	10	10	10	10	10	10	10
Exxon 3	10	10	10	10	10	10	10	10	10	10	10	10	10	10	10	10	10	10	10	10	10	10	10	10	10	10	10	10	10	10	10	10	10	10	10	10
Morgans Point	10	10	10	10	10	10	10	10	10	10	10	10	10	10	10	10	10	10	10	10	10	10	10	10	10	10	10	10	10	10	10	10	10	10	10	10
75/76	10	10	10	10	10	10	10	10	10	10	10	10	10	10	10	10	10	10	10	10	10	10	10	10	10	10	10	10	10	10	10	10	10	10	10	10
63/64	10	10	10	10	10	10	10	10	10	10	10	10	10	10	10	10	10	10	10	10	10	10	10	10	10	10	10	10	10	10	10	10	10	10	10	10
51/52	10	10	10	10	10	10	10	10	10	10	10	10	10	10	10	10	10	10	10	10	10	10	10	10	10	10	10	10	10	10	10	10	10	10	10	10
37/38	10	10	10	10	10	10	10	10	10	10	10	10	10	10	10	10	10	10	10	10	10	10	10	10	10	10	10	10	10	10	10	10	10	10	10	10
25/26	10	10	10	10	10	10	10	10	10	10	10	10	10	10	10	10	10	10	10	10	10	10	10	10	10	10	10	10	10	10	10	10	10	10	10	10
11/12	10	10	10	10	10	10	10	10	10	10	10	10	10	10	10	10	10	10	10	10	10	10	10	10	10	10	10	10	10	10	10	10	10	10	10	10
1 & 2 Bravo	10	10	10	10	10	10	10	10	10	10	10	10	10	10	10	10	10	10	10	10	10	10	10	10	10	10	10	10	10	10	10	10	10	10	10	10

NOTE: This is automated data that may/may not agree with the official BAM thinking that's found on the daily slides or special visibility report slides. This data should be used as a guide only

Houston Pilots Wind Chart



Forecast Confidence



Example

Sustained wind 13 Knots
Gusts 18 Knots
Wind from the N

WS: 13
G:18
N

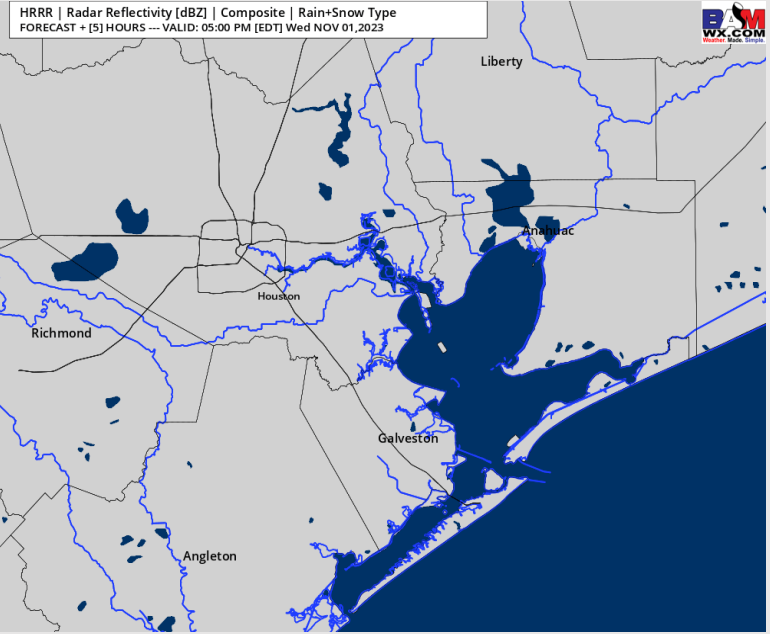
Time Knots	Wed 12pm	Wed 1pm	Wed 2pm	Wed 3pm	Wed 4pm	Wed 5pm	Wed 6pm	Wed 7pm	Wed 8pm	Wed 9pm	Wed 10pm	Wed 11pm	Thu 12am	Thu 1am	Thu 2am	Thu 3am	Thu 4am	Thu 5am	Thu 6am	Thu 7am	Thu 8am	Thu 9am	Thu 10am	Thu 11am	Thu 12pm	Thu 1pm	Thu 2pm	Thu 3pm	Thu 4pm	Thu 5pm	Thu 6pm	Thu 7pm	Thu 8pm	Thu 9pm	Thu 10pm	Thu 11pm		
610 Bridge	5	5	5	5	4	4	3	3	3	3	3	3	3	3	3	4	4	4	4	4	4	4	5	6	5	5	4	4	4	4	4	4	5	5	4	4	3	
	7	8	7	7	6	6	6	6	8	9	9	9	9	8	10	6	6	6	6	6	6	6	7	8	7	7	6	5	7	6	6	7	7	6	6	5	5	
	NE	NNE	NNE	NNE	NNE	NNE	N	W	SSW	E	NE	N	N	NE	NE	NE	NE	NE	NE	NE	NE	ENE	ENE	E	E	E	E	E	E	E	ESE	ESE	ESE	ESE	E	E		
Kinder 1	5	5	5	5	4	4	3	3	3	3	3	3	3	3	3	4	4	4	4	4	4	4	5	6	5	5	4	4	4	4	4	5	4	4	4	3	3	
	7	8	7	7	6	6	6	6	8	9	9	9	8	9	10	6	6	6	6	6	6	6	7	8	7	7	6	5	7	6	6	7	7	6	6	5	5	
	NE	NNE	NNE	NNE	NNE	NNE	NNE	NNW	WNW	S	ENE	NNE	NNE	NE	NE	NE	NE	NE	NE	NE	NE	ENE	ENE	E	E	E	E	E	E	E	ESE	ESE	ESE	ESE	ESE	E	E	
Greens Bayou	5	5	5	5	5	4	4	3	4	3	3	3	3	3	3	4	4	4	4	4	4	4	5	6	5	5	4	4	4	4	4	4	5	4	4	4	3	3
	7	8	7	7	6	6	6	6	9	8	8	9	8	9	10	6	6	6	6	6	6	6	7	8	7	7	5	5	7	6	6	7	6	6	5	5	5	
	NE	NNE	NNE	NNE	NNE	ENE	ENE	S	NNW	N	NNW	N	NNE	NNE	NE	NE	NE	NE	NE	NE	ENE	ENE	ENE	E	E	E	E	E	E	E	ESE	ESE	ESE	ESE	ESE	ESE	E	E
Shell Crude	5	5	5	5	5	4	4	4	4	3	3	3	3	3	3	4	4	4	4	4	4	4	5	6	6	5	4	4	4	4	5	5	5	4	4	4	3	3
	7	8	7	7	6	6	6	7	9	9	8	9	9	10	10	6	6	6	6	6	6	6	7	8	7	7	6	5	7	6	5	7	6	5	5	5	5	
	NE	NNE	NNE	NE	E	SE	SE	SW	NNW	N	N	ENE	NNE	NNE	NE	NE	NE	NE	NE	NE	NE	NE	ENE	ENE	ENE	E	E	E	E	E	ESE	ESE	ESE	ESE	ESE	ESE	E	E
Lynchburg Ferries	5	5	6	5	5	4	4	4	4	3	3	3	3	3	3	4	5	4	5	5	5	5	6	5	5	4	4	4	5	5	5	5	4	4	4	4	4	
	7	7	7	7	7	6	7	8	9	9	9	9	11	11	6	6	6	6	6	6	6	6	7	8	7	6	6	5	7	6	6	7	6	6	5	6	5	
	NE	NNE	NNE	NE	E	ESE	ESE	NW	NNW	N	N	NNE	NNE	NNE	NE	NE	NE	NE	NE	NE	NE	ENE	ENE	ENE	E	E	E	E	ESE	ESE	ESE	ESE	ESE	ESE	ESE	E	E	
Exxon 3	6	5	5	5	5	4	4	4	4	3	3	3	3	3	4	5	4	5	5	5	5	5	6	6	5	5	4	4	5	5	5	5	5	4	4	4	4	
	8	7	7	7	6	6	6	9	10	11	10	10	11	12	12	7	7	7	7	7	7	7	8	8	7	7	6	6	7	7	7	6	6	6	6	6	6	
	NE	NNE	NNE	NE	ENE	ENE	ESE	N	NNW	N	N	NNE	NNE	NE	NE	NE	NE	NE	NE	NE	NE	NE	ENE	ENE	ENE	E	E	E	E	ESE	ESE	ESE	ESE	ESE	E	E	E	
Morgans Point	6	5	5	5	5	5	5	5	6	5	5	5	6	6	6	7	8	8	8	8	8	8	8	8	7	6	5	5	5	5	5	6	6	6	6	6	6	
	8	7	7	7	7	6	6	9	10	11	11	11	12	12	12	9	9	9	9	9	9	9	9	9	8	7	7	7	7	7	7	8	8	8	7	7	7	7
	NE	NNE	NNE	NNE	NNE	NE	ENE	W	N	NNW	WSW	NNE	NNE	NE	NE	NE	NE	NE	NE	NE	NE	NE	ENE	ENE	ENE	E	E	E	ESE	ESE	ESE	ESE	ESE	ESE	ESE	E	E	
75/76	9	7	6	5	5	5	6	7	9	9	9	9	10	10	11	11	12	12	12	12	12	12	11	10	8	7	6	6	6	6	7	8	8	8	8	7	7	
	10	8	7	7	7	6	7	8	10	10	11	10	11	12	12	12	12	12	12	12	12	12	12	11	9	8	8	9	9	9	9	9	9	9	8	8	8	
	NE	NE	NE	NNE	NNE	NNE	E	ENE	SSW	WSW	ENE	NNE	NE	NE	NE	NE	ENE	ENE	ENE	ENE	ENE	ENE	ENE	ENE	ENE	ENE	ENE	ENE	ENE	E	ESE	ESE	ESE	ESE	ESE	ESE	ESE	
63/64	10	8	7	5	5	5	6	8	9	10	10	10	11	11	12	12	13	13	13	13	13	13	12	11	9	7	6	6	6	6	7	8	8	8	8	8		
	11	8	8	8	7	7	7	8	9	10	10	10	11	12	13	13	14	15	15	15	14	13	11	10	9	6	6	6	6	8	8	9	9	9	8	8	8	
	NE	NE	NE	NE	NNE	NNE	NNE	NNE	ENE	NNE	NNE	NNE	NE	NE	ENE	ENE	ENE	ENE	ENE	ENE	ENE	ENE	ENE	ENE	ENE	ENE	ENE	ENE	ENE	E	ESE	ESE	ESE	ESE	ESE	ESE	ESE	
51/52	10	8	8	7	6	6	7	9	9	9	9	10	11	11	13	11	12	13	13	13	13	12	11	10	9	8	7	6	5	6	7	8	7	7	7	7		
	10	8	9	8	8	7	7	8	9	9	9	10	12	12	13	12	13	14	14	14	13	12	11	10	9	8	8	8	8	8	8	8	8	8	8	8	8	
	NE	NNE	NNE	NE	NE	NNE	NNE	NE	NE	NE	NE	NE	NE	NE	ENE	ENE	ENE	ENE	ENE	ENE	ENE	ENE	ENE	ENE	ENE	ENE	ENE	ENE	ENE	E	E	ESE	ESE	ESE	ESE	ESE	ESE	
37/38	9	8	7	7	7	6	6	7	8	9	8	10	11	11	12	10	11	12	12	12	12	12	11	11	9	8	8	7	6	7	7	7	7	7	7	7		
	10	8	8	8	8	8	8	8	9	9	9	11	12	12	13	11	12	13	13	13	13	13	12	11	10	9	8	8	8	8	8	8	8	8	8	8	8	
	NE	NNE	NNE	NE	ENE	NNE	NNE	NE	NE	NE	NE	NE	NE	NE	NE	NE	NE	NE	NE	NE	ENE	ENE	ENE	ENE	ENE	ENE	ENE	ENE	ENE	E	E	ESE	ESE	ESE	ESE	ESE	ESE	
25/26	9	7	7	7	7	6	6	7	8	8	8	9	10	10	11	9	10	10	10	10	10	10	10	10	9	8	7	7	7	7	7	7	7	7	7	7		
	9	8	8	8	7	8	8	8	8	9	8	10	11	11	12	10	11	11	11	12	12	12	11	10	10	10	9	8	8	8	8	8	8	8	8	8	8	
	NE	NNE	NNE	NNE	E	NE	NNE	NNE	NE	NE	NE	NE	NE	NE	NE	NE	NE	NE	NE	NE	NE	ENE	ENE	ENE	ENE	ENE	ENE	ENE	ENE	E	E	ESE	ESE	ESE	ESE	ESE	ESE	
11/12	9	7	6	6	6	6	7	8	8	8	8	9	9	10	10	9	10	10	10	10	10	10	10	10	9	8	8	7	7	7	7	7	7	7	7	7		
	10	8	7	7	7	8	8	8	8	9	9	10	10	11	12	10	11	11	11	12	11	11	11	10	10	10	9	8	8	8	8	8	8	8	8	8	8	
	NE	NE	NNE	NNE	ENE	NNE	NNE	NNE	NE	NE	NE	NE	NE	NE	NE	NE	NE	NE	NE	NE	NE	ENE	ENE	ENE	ENE	ENE	ENE	ENE	ENE	E	E	ESE	ESE	ESE	ESE	ESE	ESE	
1 & 2 Bravo	11	9	8	6	6	7	7	8	9	10	9	9	9	11	10	11	12	12	12	12	12	12	11	10	9	8	8	8	8	8	8	8	8	8	8	8		
	11	9	8	8	8	8	8	8	9	10	9	9	9	11	10	12	13	13	14	13	13	13	12	11	11	10	9	9	9	9	9	9	9	9	9	9		
	NE	NE	NE	NNE	NNE	NNE	NNE	NNE	NNE	NNE	NNE	NNE	NE	NE	NE	NE	ENE	ENE	ENE	ENE	ENE	ENE	ENE	ENE	ENE	ENE	ENE	ENE	ENE	E	E	ESE	ESE	ESE	ESE	ESE	ESE	

NOTE: This is automated data that may/may not agree with the official BAM thinking that's found on the daily slides. This data should be used as a guide only

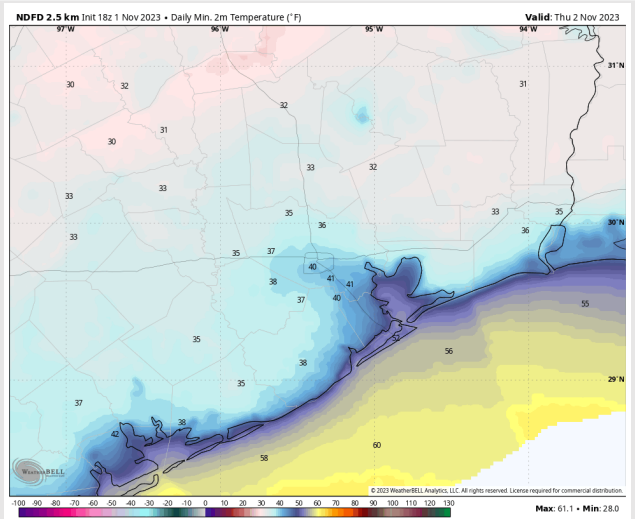
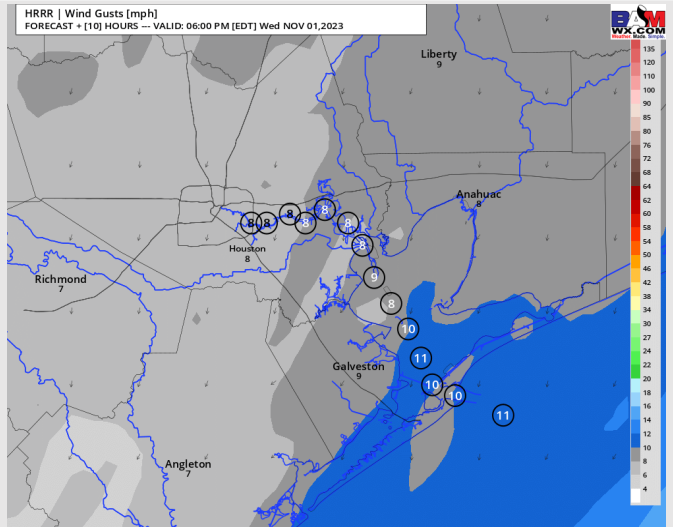
Forecast Discussion

- Precip:** Favoring dry conditions for the rest of the day.
- Wind:** Winds out of the NNE this PM. For Stations **N of Morgan's Point** winds at 4-9 kts for the rest of the PM. For stations **S of Morgan's Point** winds will be 10-15 kts for the remainder of the day. **Wind gusts to near 15-20 kts possible after 7 PM and through the evening.**
- Low Temps:** **N of Morgan's Point:** Low 40's F. **S of Morgan's Point:** Low-Mid 50s F.
- Visibility:** Not anticipating any visibility issues at this time.

Precip Image: 4 PM CT



**Wind Speeds:
5 PM CT**



**Low Temps
THU AM**

Houston Pilots: Thu. 11/2/2023

Forecast Discussion

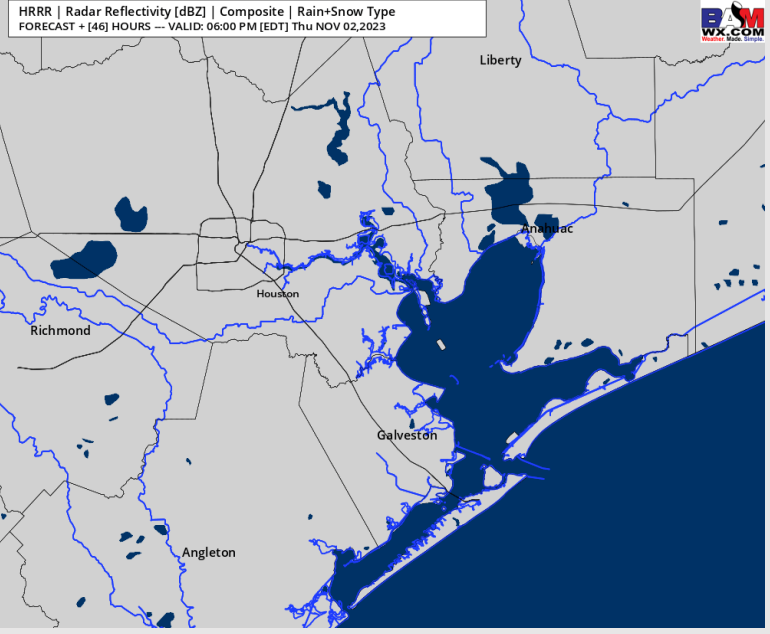
Precip: Favoring dry conditions for Thursday.

Wind: Winds will be out of the NE through 5 PM before shifting out of the E/SE the rest of the day Thursday. Winds N of Morgan's Point will be at 3 – 8 kts the entire day. S of Morgan's Point will be at 10 – 15 kts through 1 PM before slightly decreasing to 8 - 13 kts.

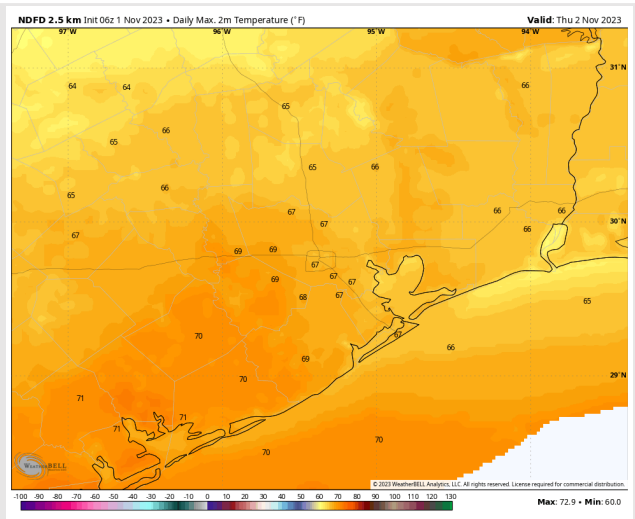
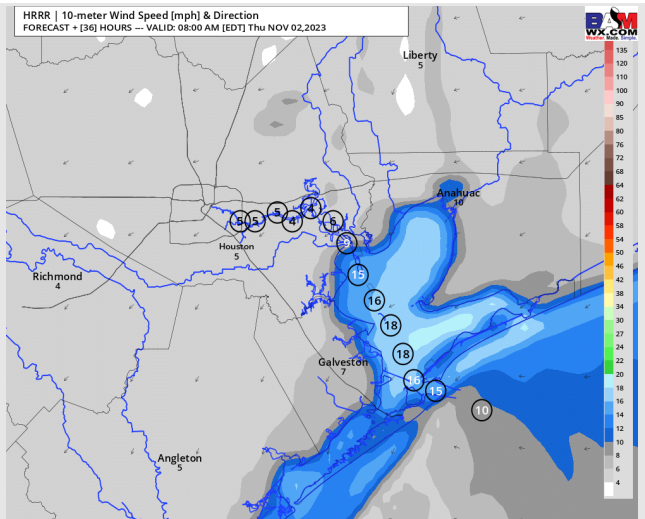
High Temps THU: N of Morgan's Point: Mid 60s F. S of Morgan's Point: Low-Mid 60s F.

Visibility: No visibility concerns for Thursday.

Precip Image: 5 PM CT



Wind Speed
7 AM CT



High Temps
Thursday

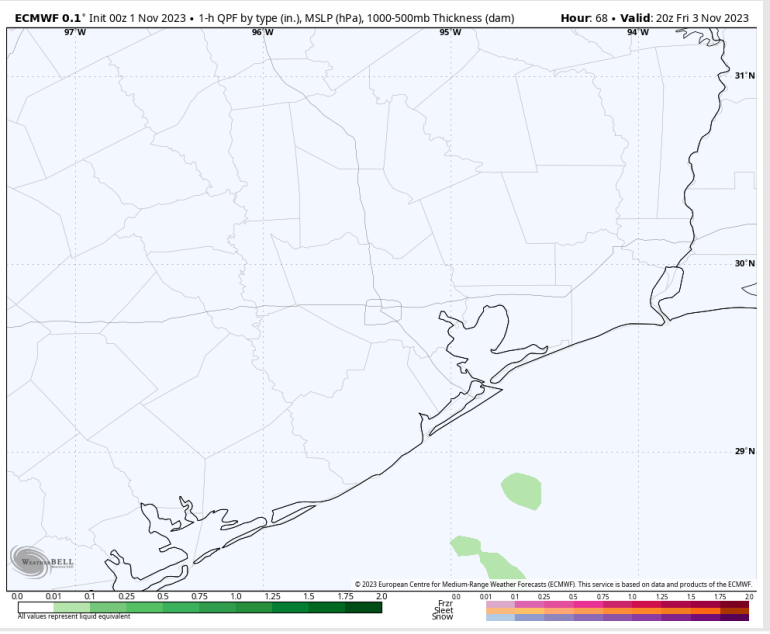
Houston Pilots: Fri. 11/3/2023



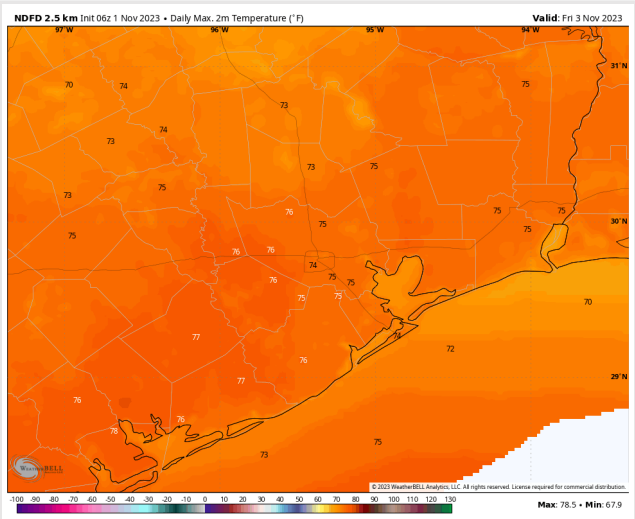
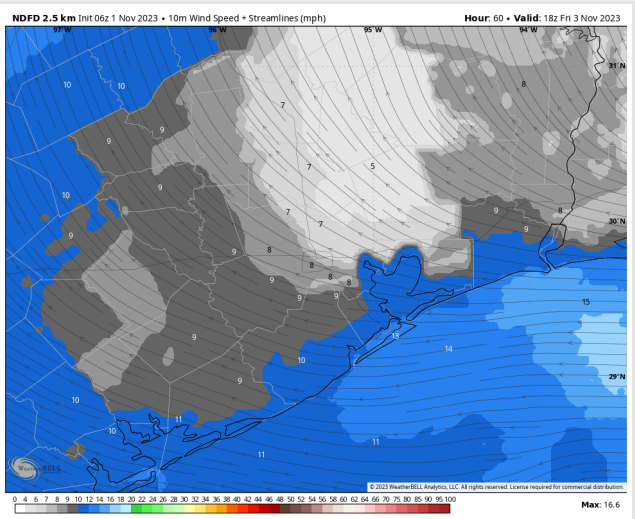
Forecast Discussion

- Precip:** A 10-20% chance of a few isolated showers near the Boarding Station Friday evening after ~4 PM, dry conditions are favored Friday.
- Wind:** No of Morgan's Point: Out of the NE through noon before turning E/ESE for the PM. Sustained much of the day to sit between 10-15 kts (gusting 13-18 kts.)
- High Temps:** N of Morgan's Point: Mid 70's F. S of Morgan's Point: Low 70s F.
- Visibility:** Not anticipating any visibility issues currently.

Precip Image: 3 PM CT

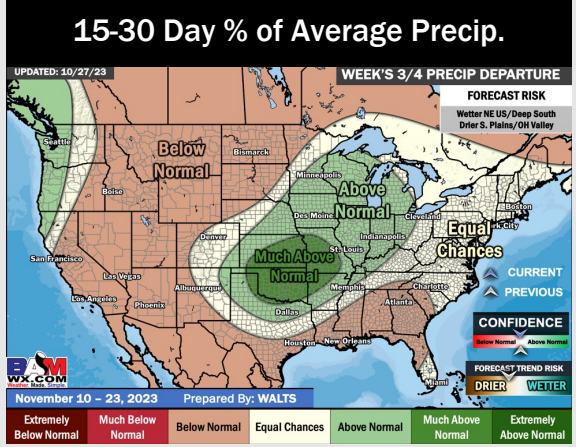
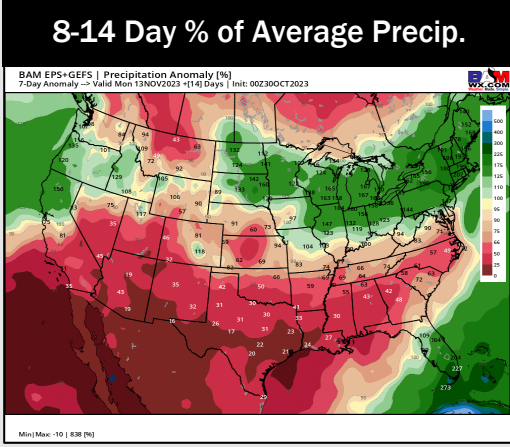
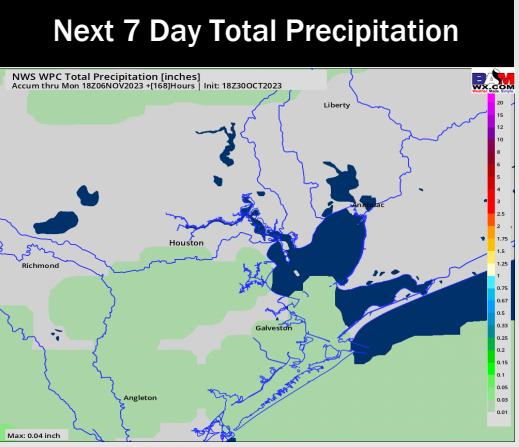
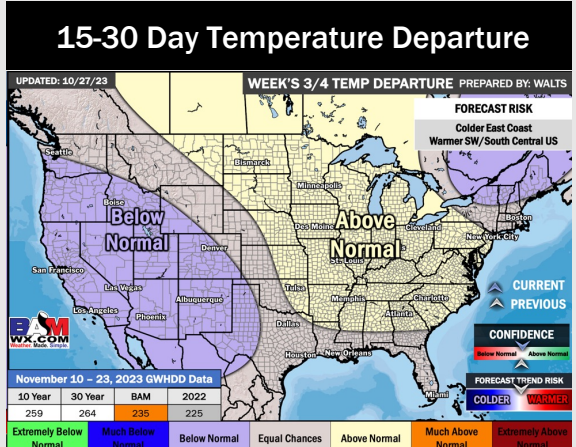
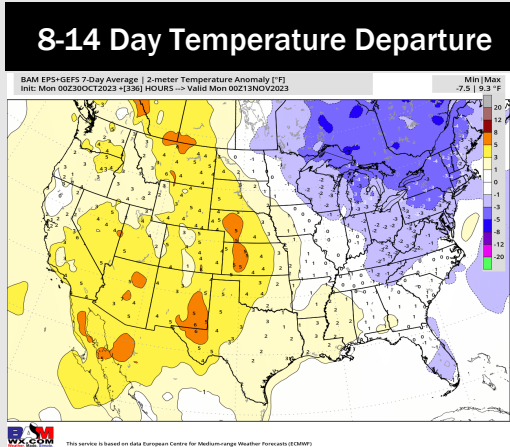
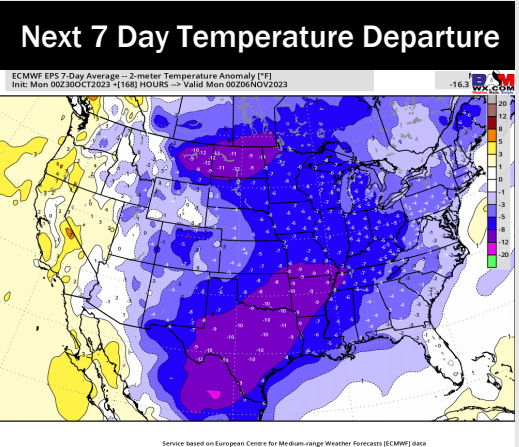


Wind Speed:
1 PM CT



High Temps
Friday

Houston Pilots: 11/1/23



- High pressure settles in behind this current cold front keeping drier conditions with minor chances after the weekend. Temperatures will remain below normal with warmer temperatures returning into the weekend.
- Below normal rainfall and seasonal to slightly above normal temperatures are expected into the week 2 timeframe.
- Seasonal temperatures and below normal chances for precipitation are favored in the weeks 3/4 timeframe.