

Houston Pilots Forecast Package



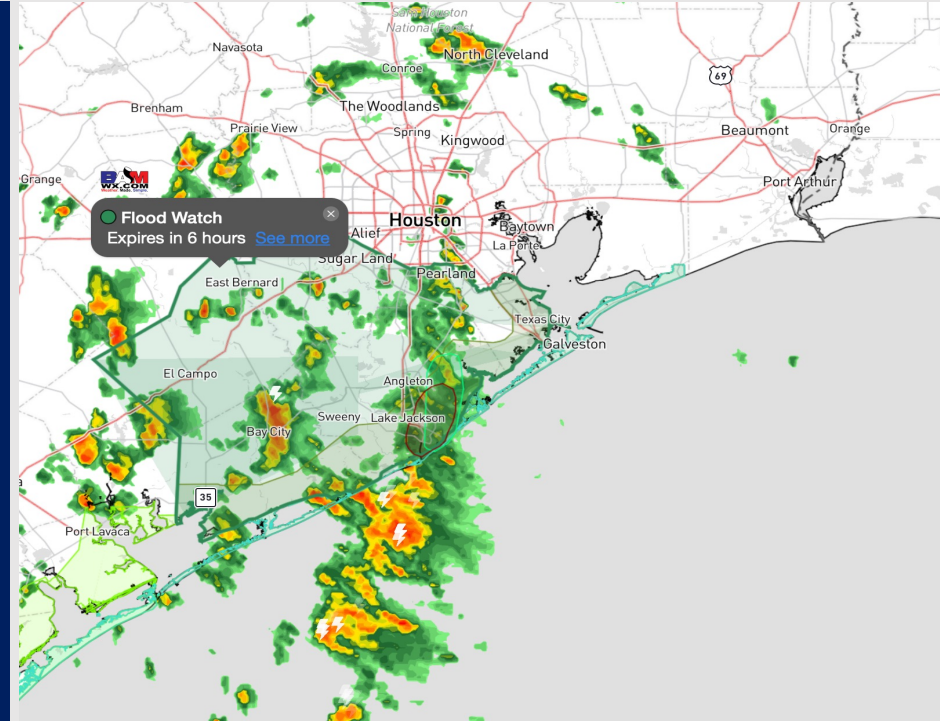
Updated: 2:00 PM CT

Wednesday, October 4, 2023

Forecaster: Alyssa Elliott

Weather Headlines

- Not anticipating tropical development in the Gulf of Mexico over the next 7-10 days.
- Scattered showers and storms will continue to be possible through Wednesday evening.
- Elevated winds of up to 13 - 18 kts will persist over the next 2 - 3 days for Stations S of Morgan's Point with **gustier winds through the PM**. Prolonged gusty winds out of the SSE pose a risk for isolated cases of **minor coastal flooding**.
- Not anticipating any visibility concerns over the next few days.



Radar/NWS Alerts: 1:30 PM CT



As always, please do not hesitate to reach out to us with any forecast questions via the chat option on the Weather Porthole or our on-call number, **(317)-560-8122** press 1 for forecast questions.

Houston Pilots Visibility Chart (miles)



Forecast Confidence



Time	Wed 1pm	Wed 2pm	Wed 3pm	Wed 4pm	Wed 5pm	Wed 6pm	Wed 7pm	Wed 8pm	Wed 9pm	Wed 10pm	Wed 11pm	Thu 12am	Thu 1am	Thu 2am	Thu 3am	Thu 4am	Thu 5am	Thu 6am	Thu 7am	Thu 8am	Thu 9am	Thu 10am	Thu 11am	Thu 12pm	Thu 1pm	Thu 2pm	Thu 3pm	Thu 4pm	Thu 5pm	Thu 6pm	Thu 7pm	Thu 8pm	Thu 9pm	Thu 10pm	Thu 11pm	Fri 12am		
610 Bridge	6	7	7	7	8	10	10	10	10	10	10	10	10	10	10	10	8	9	7	6	6	6	6	6	6	6	8	10	10	10	10	10	10	8	8	10		
Kinder 1	6	7	7	7	8	10	10	10	10	10	10	10	10	10	10	10	8	8	8	6	7	8	8	7	6	7	8	10	10	10	10	10	10	8	8	10		
Greens Bayou	6	7	7	7	8	9	10	10	10	10	10	10	10	10	10	9	10	10	10	9	9	9	9	9	7	8	8	10	10	10	10	10	10	8	8	10		
Shell Crude	6	8	8	8	8	10	10	10	10	10	10	10	10	10	10	9	10	10	10	10	10	10	10	10	9	8	8	10	10	10	10	10	10	8	8	10		
Lynchburg Ferries	6	8	8	8	8	10	10	10	10	10	10	10	10	10	10	9	10	10	10	10	10	10	10	10	10	8	8	10	10	10	10	10	10	8	8	8		
Exxon 3	7	9	10	10	10	10	10	10	10	10	10	10	10	10	10	10	10	10	10	10	10	10	10	10	10	8	8	10	10	10	10	10	10	8	8	8		
Morgans Point	8	10	10	10	10	10	10	10	10	10	10	10	10	10	10	10	10	10	10	10	10	10	10	10	10	10	8	10	10	10	10	10	10	8	8	8		
75/76	8	10	10	10	10	10	10	10	10	10	10	10	10	10	10	10	10	10	10	10	10	10	10	10	10	10	10	10	10	10	10	10	10	8	8	8		
63/64	10	10	10	10	10	10	10	10	10	10	10	10	10	10	10	10	10	10	10	10	10	10	10	10	10	10	10	10	10	10	10	10	10	10	10	8	10	
51/52	10	10	10	10	10	10	10	10	10	10	10	10	10	10	10	10	10	10	10	10	10	10	10	10	10	10	10	10	10	10	10	10	10	10	10	10	10	
37/38	10	10	10	10	10	10	10	10	10	10	10	10	10	10	10	10	10	10	10	10	10	10	10	10	10	10	10	10	10	10	10	10	10	10	10	10	10	
25/26	10	10	10	10	10	10	10	10	10	10	10	10	10	10	10	10	10	10	10	10	10	10	10	10	10	10	10	10	10	10	10	10	10	10	10	10	10	10
11/12	10	10	10	10	10	10	10	10	10	10	10	10	10	10	10	10	10	10	10	10	10	10	10	10	10	10	10	10	10	10	10	10	10	10	10	10	10	10
1 & 2 Bravo	10	10	10	10	10	10	10	10	10	10	10	10	10	10	10	10	10	10	10	10	10	10	10	10	10	10	10	10	10	10	10	10	10	10	10	10	10	10

NOTE: This is automated data that may/may not agree with the official BAM thinking that's found on the daily slides or special visibility report slides. This data should be used as a guide only

Houston Pilots Wind Chart



Sustained wind 13 Knots
Gusts 18 Knots
Wind from the N

Example

WS: 13
G:18
N

Time Knots	Wed 1pm	Wed 2pm	Wed 3pm	Wed 4pm	Wed 5pm	Wed 6pm	Wed 7pm	Wed 8pm	Wed 9pm	Wed 10pm	Wed 11pm	Thu 12am	Thu 1am	Thu 2am	Thu 3am	Thu 4am	Thu 5am	Thu 6am	Thu 7am	Thu 8am	Thu 9am	Thu 10am	Thu 11am	Thu 12pm	Thu 1pm	Thu 2pm	Thu 3pm	Thu 4pm	Thu 5pm	Thu 6pm	Thu 7pm	Thu 8pm	Thu 9pm	Thu 10pm	Thu 11pm	Fri 12am		
610 Bridge	11	11	10	10	10	10	10	9	8	7	6	6	6	6	5	4	4	4	4	4	6	7	6	6	5	5	5	5	5	5	5	4	4	4	5	4		
	16	16	15	15	16	16	15	15	12	11	10	9	9	9	8	7	7	6	6	6	7	9	10	9	8	8	8	8	7	8	8	8	7	7	6	7	7	
	SSE	SSE	SE	SSE	SE	SE	SE	SE	SE	SE	SE	SE	SE	SE	SE	SSE	SE	SE	SE	SSE	SSE	NNE	SSE	NE	ENE	ESE	SE	ESE	SSW	N	N	NNW	ESE	SW	NW	ENE		
Kinder 1	10	11	10	10	10	10	10	9	8	7	7	6	6	6	5	4	4	4	4	4	6	6	6	6	5	5	5	5	5	5	4	4	4	4	5	4		
	16	16	15	15	16	16	15	15	12	11	10	9	9	9	7	7	7	6	6	6	7	9	10	9	8	8	8	7	8	8	8	7	7	6	7	7		
	SSE	SSE	SE	SE	SE	SE	SE	SE	SE	SE	SE	SE	SE	SE	SE	SSE	SE	SE	SSE	SSE	NNE	SSE	NE	ENE	ESE	SE	SE	SSW	N	N	N	SSW	SSE	WNW	SSE			
Greens Bayou	11	11	10	10	10	10	10	9	8	7	7	6	6	6	5	4	4	4	4	4	5	6	6	6	5	5	5	5	5	5	4	4	4	4	4	4		
	16	16	15	16	16	16	15	14	12	11	10	9	9	9	8	7	6	6	6	6	7	8	9	8	8	8	8	7	8	8	8	7	7	6	7	6		
	SE	SSE	SE	SE	SE	SE	SE	SE	SE	SE	SE	SE	SE	SE	SSE	SSE	SE	SE	SSE	SSE	E	NE	ENE	SE	SE	SE	SSW	N	N	N	NNW	ESE	NNW	NW	NW			
Shell Crude	11	11	10	10	11	11	10	10	9	8	7	6	6	6	5	5	4	4	4	4	5	6	6	6	5	5	5	5	5	5	5	5	5	5	4	5	4	
	16	16	15	16	16	16	15	15	13	12	11	9	9	9	8	7	7	6	6	7	8	9	9	8	8	8	8	8	8	8	7	7	6	7	6	7	7	
	SE	SE	SE	SE	SE	SE	SE	SE	SE	SE	SE	SSE	SSE	SSE	SSE	SSE	SE	SE	SSE	SSE	S	NE	NE	ENE	SE	SE	SE	SSW	N	NNW	N	NNW	NE	NNW	WNW			
Lynchburg Ferries	11	11	11	11	11	11	11	10	10	9	8	7	7	7	6	5	5	4	4	4	5	6	6	6	6	6	6	6	6	6	6	5	5	5	5	5		
	16	16	16	16	16	16	15	14	14	13	11	10	10	10	8	8	7	6	7	7	8	10	9	8	9	8	8	8	8	8	7	7	6	7	6	7	7	
	SE	SE	SE	SE	SE	SE	SE	SE	SE	SE	SSE	SSE	SSE	SSE	SSE	SSE	SSE	SSE	SSE	S	NNE	NE	ENE	SE	SE	SSE	SSW	NNW	NNW	N	N	NNW	S	N	N			
Exxon 3	11	11	11	12	12	12	12	11	11	10	9	8	8	8	7	7	6	5	5	5	6	7	6	6	6	6	6	6	6	6	6	5	5	5	5	5		
	16	16	16	16	16	16	16	15	15	14	12	11	11	11	10	9	8	8	8	7	9	10	9	9	9	9	9	9	8	8	7	7	7	8	7	8		
	SE	SE	SE	SE	SE	SE	SE	SE	SE	SE	SSE	SSE	SSE	SSE	SSE	SSE	SSE	SSE	SSE	SSE	E	NE	NNE	ENE	SE	SE	ENE	NNW	NNW	NNW	N	W	SSW	N	N			
Morgans Point	12	12	12	13	14	14	14	13	13	13	12	11	11	10	10	9	8	7	7	7	6	7	7	6	7	7	7	7	7	7	7	6	6	6	6	6		
	16	16	16	17	18	17	17	16	16	15	14	14	13	13	12	11	10	9	9	8	10	10	10	9	9	10	10	10	9	9	9	9	8	7	8	8		
	SE	SE	SE	SE	SE	SE	SE	SE	SE	SE	SSE	SSE	SSE	SSE	SSE	SSE	SSE	SSE	SSE	S	E	ENE	NNE	ENE	ESE	SE	ENE	NNW	N	N	N	SW	SSE	N	NNW			
75/76	13	13	14	15	16	17	16	16	16	15	14	14	14	14	13	12	11	10	9	8	8	9	8	7	8	7	7	7	7	7	7	7	7	7	7	7		
	16	16	17	18	19	19	18	18	17	17	16	15	15	14	13	12	11	10	10	10	10	11	10	10	11	11	10	10	10	10	10	10	10	10	9	9	9	
	SE	SE	SE	SE	SE	SE	SE	SE	SE	SE	SSE	SSE	SSE	SSE	SSE	SSE	S	S	S	S	E	ENE	NE	NE	E	ESE	ESE	ESE	E	SSE	N	N	N	E	NE	WSW		
63/64	14	14	15	15	16	17	17	16	17	16	15	14	14	13	12	11	11	10	9	8	9	9	8	7	8	7	8	8	8	8	8	8	8	8	8	8	8	
	16	16	17	17	18	19	18	18	18	17	17	16	16	15	13	13	12	11	10	9	12	11	10	9	11	11	10	10	10	10	10	10	10	10	10	10	10	
	SE	SE	SE	SE	SE	SE	SE	SE	SE	SE	SSE	SSE	SSE	SSE	SSE	SSE	S	S	S	S	ENE	NE	NE	ENE	ESE	ESE	ESE	E	NNE	N	WNW	N	N	N	NNE	N		
51/52	14	14	14	14	15	16	16	16	16	15	15	14	14	13	12	11	10	10	9	8	9	9	8	8	7	7	7	7	7	7	7	7	7	7	7	7		
	16	16	16	16	17	18	18	17	17	17	16	15	15	14	13	12	11	11	10	9	11	11	10	10	10	10	10	9	9	9	9	9	9	9	9	9	10	
	SE	SE	SE	SE	SE	SE	SE	SE	SE	SE	SSE	SSE	SSE	SSE	SSE	SSE	S	S	S	S	E	NE	NE	ENE	ESE	ESE	ESE	NE	N	W	WNW	E	N	N	N			
37/38	14	14	14	14	15	15	15	14	15	15	14	13	13	13	11	11	10	9	9	8	9	8	9	8	7	7	7	7	7	7	7	7	7	7	7	7		
	15	16	15	16	16	17	17	16	16	16	15	15	14	13	12	11	10	10	10	9	11	11	11	10	10	9	9	9	9	9	9	9	9	9	9	9	10	
	SE	SE	SE	SE	SE	SE	SE	SE	SE	SE	SSE	SSE	SSE	SSE	SSE	S	S	S	S	E	ENE	NE	NE	ESE	ESE	ESE	ESE	E	NNW	N	ENE	WNW	N	NNE	N	N		
25/26	13	14	13	13	14	14	14	13	13	13	13	12	12	11	10	9	9	8	8	8	8	8	8	8	9	8	7	6	6	7	7	7	7	7	7	7	7	
	15	15	15	15	16	16	15	15	14	15	15	14	14	14	13	12	11	10	10	9	11	11	11	10	10	9	9	9	9	9	9	9	9	9	9	9	9	
	SE	SE	SE	SE	SE	SE	SE	SE	SE	SE	SSE	SSE	SSE	SSE	SSE	SSE	S	S	S	S	ESE	E	NE	NE	ESE	ESE	ESE	E	WNW	N	ENE	WNW	N	NNE	N	N		
11/12	14	14	13	14	14	13	14	13	13	13	13	12	12	10	10	9	8	8	8	8	8	8	9	8	7	6	6	6	6	6	6	6	6	6	6	6	6	
	15	15	15	15	15	16	15	15	14	15	15	15	14	13	12	11	11	10	10	10	10	10	11	11	11	10	9	8	7	7	7	7	7	7	7	7	8	
	SE	SE	SE	SE	SE	SE	SE	SE	SE	SE	SE	SSE	SSE	SSE	SSE	SSE	S	S	S	S	ESE	E	NE	NE	E	ESE	ESE	E	SSE	N	SSW	SW	N	NNE	N	N		
1 & 2 Bravo	15	15	14	15	15	16	15	16	15	16	16	16	15	15	14	13	12	11	10	9	9	9	9	9	9	9	9	9	9	9	9	9	9	9	9	9	9	
	16	16	16	16	16	17	16	17	16	17	17	17	16	16	15	14	13	12	11	10	9	9	9	9	9	9	9	9	9	9	9	9	9	9	9	9	9	10
	SE	SE	SE	SE	SE	SE	SE	SE	SE	SE	SSE	SSE	SSE	SSE	SSE	SSE	S	S	S	S	S	ESE	E	ENE	ENE	E	ESE	SE	ESE	NNE	N	N	ESE	N	N	N	N	

NOTE: This is automated data that may/may not agree with the official BAM thinking that's found on the daily slides. This data should be used as a guide only

Forecast Discussion

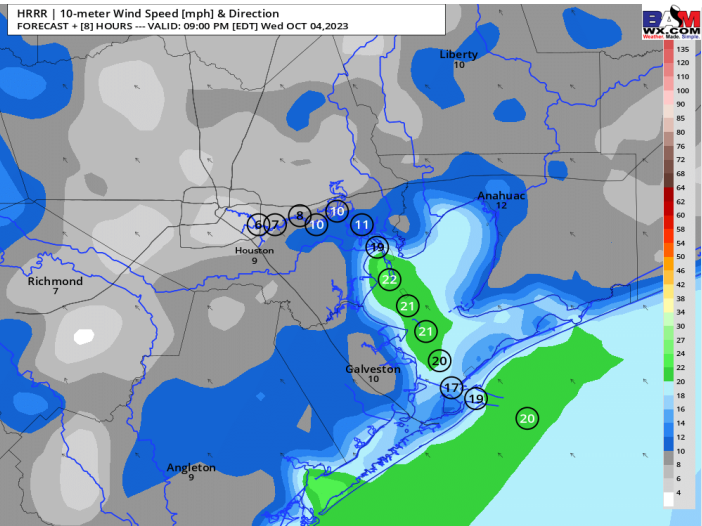
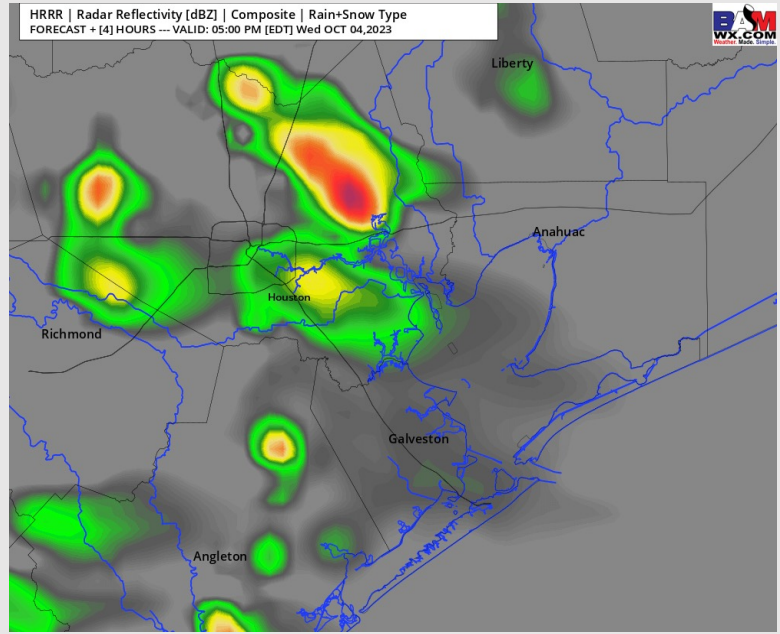
Precip: Scattered chances for storms (40-50%) are expected to continue across stations primarily N of Morgan's Point leaving isolated shower and storms (10%) being a risk for stations S of Morgan's Point. Expecting coverage tapers off near 7 PM then conditions will dry up by 9 PM and for the rest of the evening.

Wind: Sustained SSE winds continue for the evening. For Stations N of Morgan's Point, winds will be at 10-15 kts but will gradually decrease 5-10 kts around 7 PM. Sustained winds S of Morgan's Point at 15 - 20 kts will continue to increase to 25 kts after 6 PM. **Gusts reaching 25 - 30 kts will be possible S of Morgan's Point throughout the rest of the evening.**

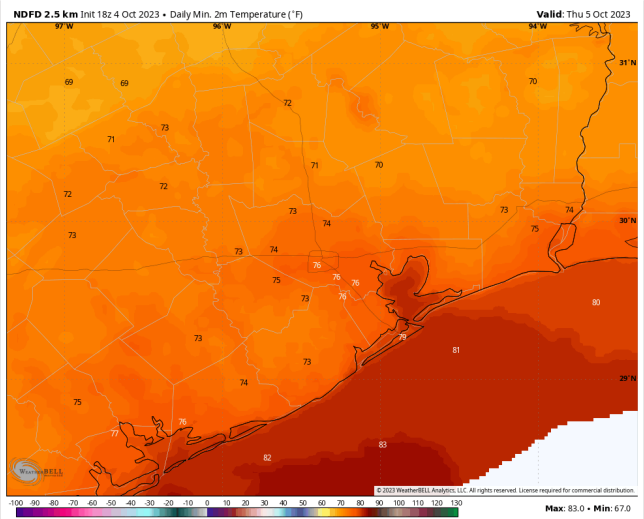
Low Temps: N of Morgan's Point: Mid 70s F. S of Morgan's Point: Upper 70s / Low 80s F.

Visibility: Not anticipating any visibility issues currently.

Precip Image: 4 PM CT



**Wind Speed:
8 PM CT**



**Low Temps
Today**

Houston Pilots: Thu. 10/5/2023



Forecast Discussion

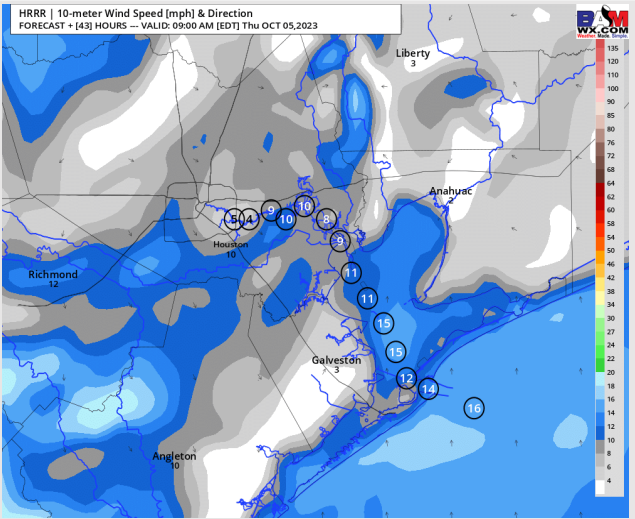
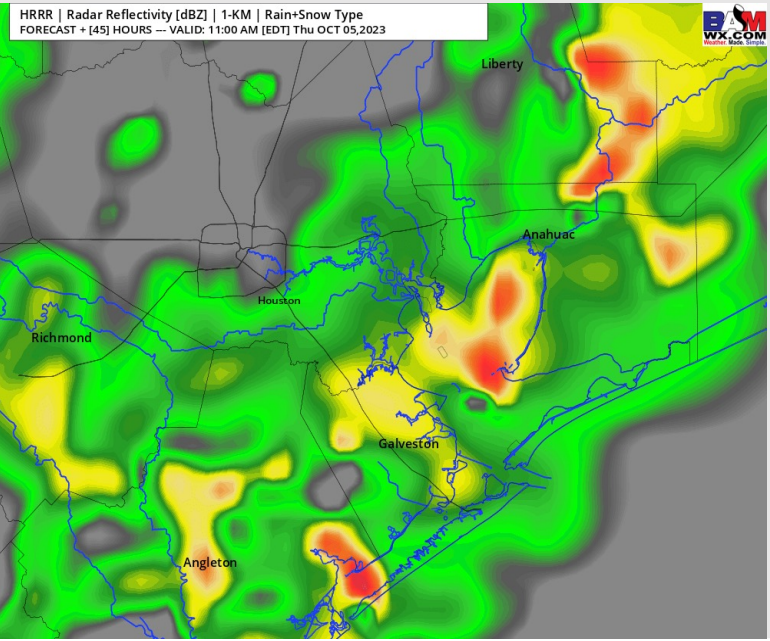
Precip: Anticipating dry conditions through the early morning before widespread shower/storm chances work into the area around 7-8 AM along a slowly progressing cold front where chances will last throughout the day.

Wind: Winds are expected to be out of the S/SE throughout the day on THU. For Stations N of Morgan's Point, winds will be at 3 - 8 kts for the entire day. Winds S of Morgan's Point will be start at 11 -16 kts through 8 AM the gradually decrease to 2-7 kts by 11 AM and remain there the rest of the day. By Sunset, winds at all stations will be 2 -7 kts.

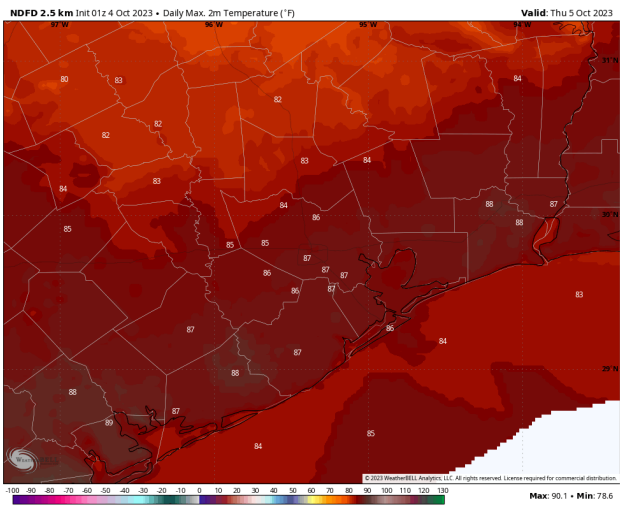
High Temps: N of Morgan's Point: Upper 80s F to near 90 F. S of Morgan's Point: Mid 80s F.

Visibility: No visibility concerns expected for today.

Precip Image: 10 AM CT



Wind Speed:
8 AM CT



High Temps
Thursday

Forecast Discussion

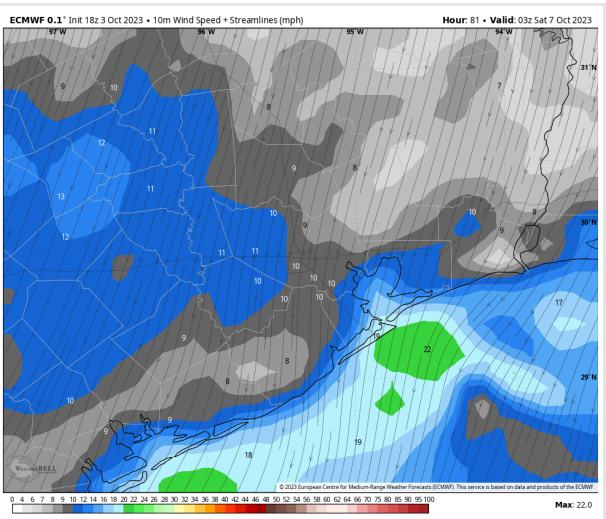
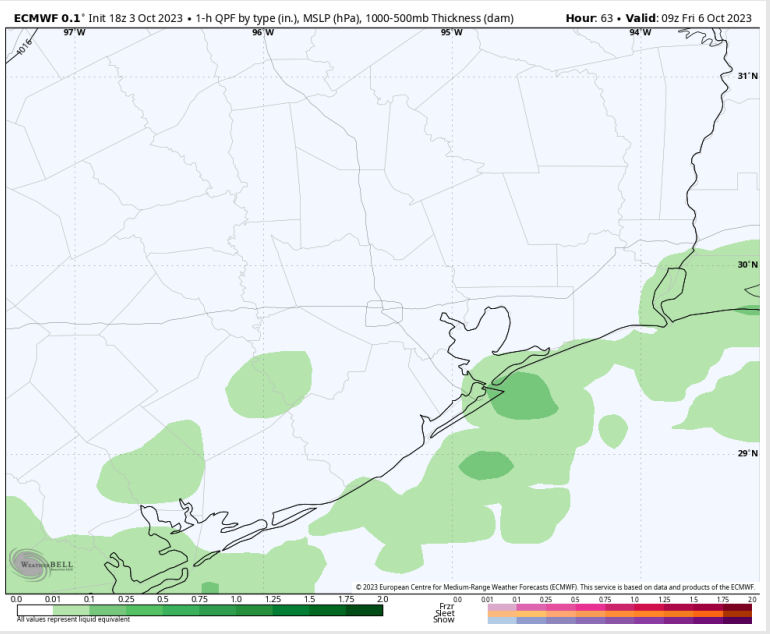
Precip: Scattered chances of shower/storm between 12 – 4 AM before dry conditions move in for the remainder of the day.

Wind: Winds will be out of the N throughout the day Friday. For Stations **N of Morgan's Point**, winds will be 3-8 kts before gradually increasing to 6-11 kts before 12 PM and then decreasing gradually back down to 3-8 kts. Winds **S of Morgan's Point** will be 11-16 kts until 9 PM when then winds will increase to 15 -20 kts.

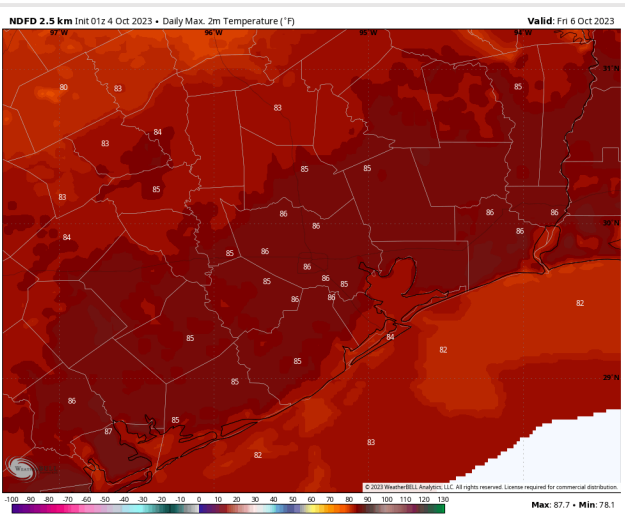
High Temps: **N of Morgan's Point:** Mid to Upper 80's. **S of Morgan's Point:** Lower 80s F.

Visibility: Not anticipating any visibility issues at this time.

Precip Image: 4 AM CT

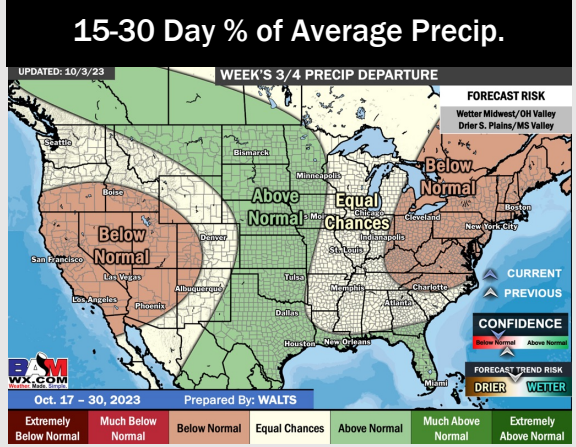
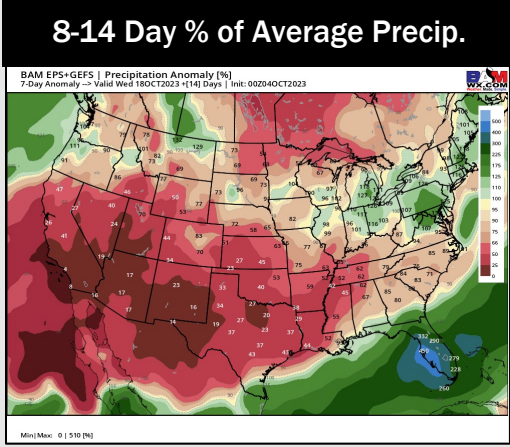
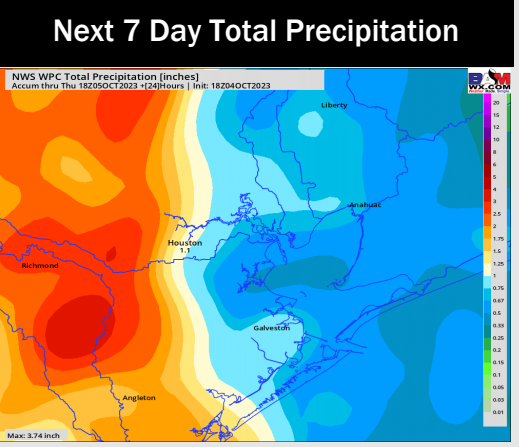
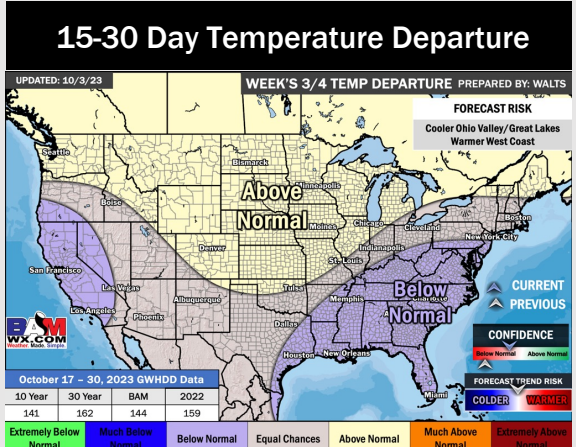
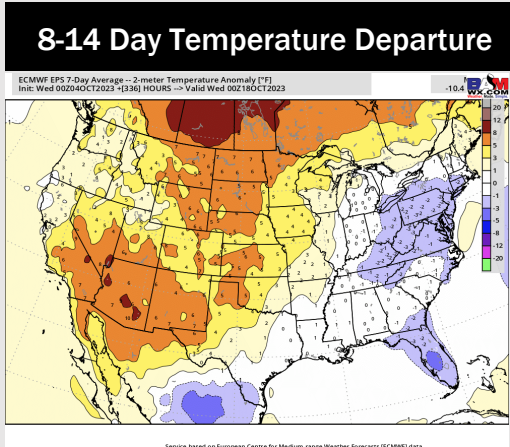
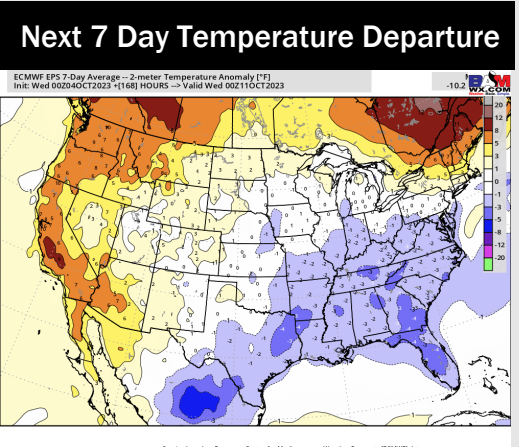


Wind Gusts:
10 PM CT



High Temps
Friday

Houston Pilots: 10/4/23



- Rain chances will continue to be at play over the next 48 hours. A cold front on Thu/Fri will look to cool temps, bringing the week one timeframe below normal.
- Generally drier/slightly colder than average temperatures are expected into the week 2 timeframe.
- Below normal temperatures and above normal chances for precipitation are favored in the weeks 3/4 timeframe.