

Houston Pilots Forecast Package



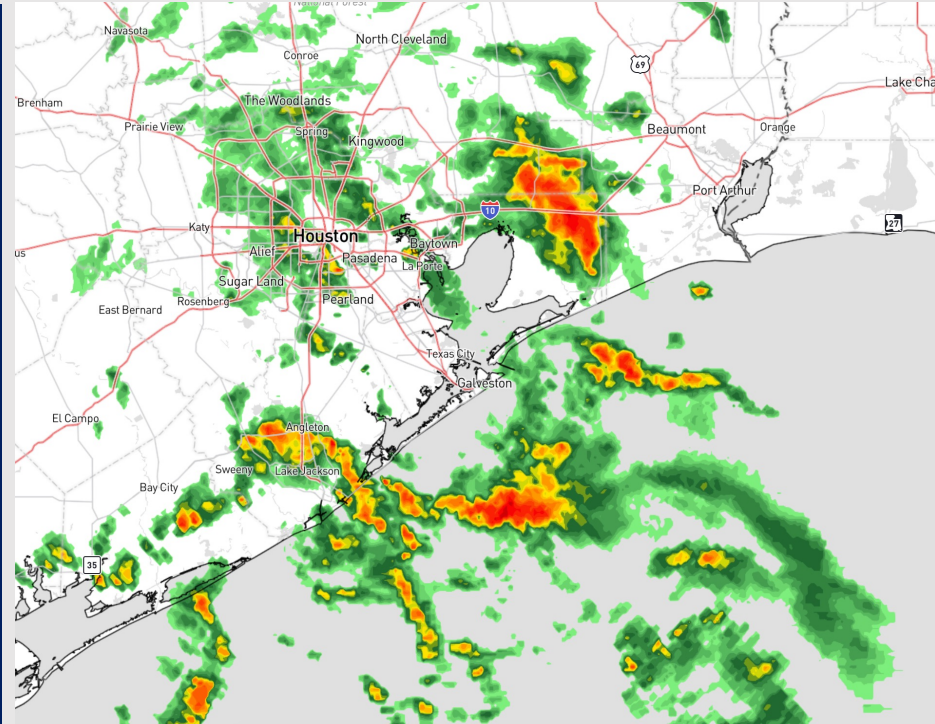
Updated: 2:15 PM CT

Tuesday, October 3, 2023

Forecaster: John Kemper

Weather Headlines

- Not anticipating tropical development in the Gulf of Mexico over the next 7-10 days.
- Scattered showers and storms will continue to be possible through Wednesday evening.
- Elevated winds of up to 13 - 18 kts will persist over the next 2 - 3 days for Stations S of Morgan's Point with **gustier winds through WED.**
- Not anticipating any visibility concerns over the next few days.



Radar/NWS Alerts: 2:12 PM CT



As always, please do not hesitate to reach out to us with any forecast questions via the chat option on the Weather Porthole or our on-call number, **(317)-560-8122** press 1 for forecast questions.

Houston Pilots Visibility Chart (miles)



Time	Tue 1pm	Tue 2pm	Tue 3pm	Tue 4pm	Tue 5pm	Tue 6pm	Tue 7pm	Tue 8pm	Tue 9pm	Tue 10pm	Tue 11pm	Wed 12am	Wed 1am	Wed 2am	Wed 3am	Wed 4am	Wed 5am	Wed 6am	Wed 7am	Wed 8am	Wed 9am	Wed 10am	Wed 11am	Wed 12pm	Wed 1pm	Wed 2pm	Wed 3pm	Wed 4pm	Wed 5pm	Wed 6pm	Wed 7pm	Wed 8pm	Wed 9pm	Wed 10pm	Wed 11pm	Thu 12am
610 Bridge	10	10	10	10	7	9	10	10	10	10	10	10	10	10	10	10	10	10	10	10	10	10	10	10	10	10	10	10	10	10	10	10	10	10	10	
Kinder 1	10	10	10	10	6	10	10	10	10	10	10	10	10	10	10	10	10	10	10	10	10	10	10	10	10	10	10	10	10	10	10	10	10	10	10	
Greens Bayou	10	10	10	10	8	10	10	10	10	10	10	10	10	10	10	10	10	10	10	10	10	10	10	10	10	10	10	10	10	10	10	10	10	10	10	
Shell Crude	10	10	10	10	9	10	10	10	10	10	10	10	10	10	10	10	10	10	10	10	10	10	10	10	10	10	10	10	10	10	10	10	10	10	10	
Lynchburg Ferries	10	10	10	10	10	10	10	10	10	10	10	10	10	10	10	10	10	10	10	10	10	10	10	10	10	10	10	10	10	10	10	10	10	10	10	
Exxon 3	10	10	10	10	10	10	10	10	10	10	10	10	10	10	10	10	10	10	10	10	10	10	10	10	10	10	10	10	10	10	10	10	10	10	10	
Morgans Point	8	10	10	10	10	10	10	10	10	10	10	10	10	10	10	10	10	10	10	10	10	10	10	10	10	10	10	10	10	10	10	10	10	10	10	
75/76	8	10	10	10	10	10	10	10	10	10	10	10	10	10	10	10	10	10	10	10	10	10	10	10	10	10	10	10	10	10	10	10	10	10	10	
63/64	10	10	10	10	10	10	10	10	10	10	10	10	10	10	10	10	10	10	10	10	10	10	10	10	10	10	10	10	10	10	10	10	10	10	10	
51/52	10	10	10	10	10	10	10	10	10	10	10	10	10	10	10	10	10	10	10	10	10	10	10	10	10	10	10	10	10	10	10	10	10	10	10	
37/38	10	10	10	10	10	10	10	10	10	10	10	10	10	10	10	10	10	10	10	10	10	10	10	10	10	10	10	10	10	10	10	10	10	10	10	
25/26	10	10	10	10	10	10	10	10	10	10	10	10	10	10	10	10	10	10	10	10	10	10	10	10	10	10	10	10	10	10	10	10	10	10	10	
11/12	10	10	10	10	10	10	10	10	10	10	10	10	10	10	10	10	10	10	10	10	10	10	10	10	10	10	10	10	10	10	10	10	10	10	10	
1 & 2 Bravo	10	10	10	10	10	10	10	10	10	10	10	10	10	10	10	10	10	10	10	10	10	10	10	10	10	10	10	10	10	10	10	10	10	10	10	

NOTE: This is automated data that may/may not agree with the official BAM thinking that's found on the daily slides or special visibility report slides. This data should be used as a guide only

Houston Pilots Wind Chart



Forecast Confidence



Example

Sustained wind 13 Knots
Gusts 18 Knots
Wind from the N

WS: 13
G:18
N

Time Knots	Tue 1pm	Tue 2pm	Tue 3pm	Tue 4pm	Tue 5pm	Tue 6pm	Tue 7pm	Tue 8pm	Tue 9pm	Tue 10pm	Tue 11pm	Wed 12am	Wed 1am	Wed 2am	Wed 3am	Wed 4am	Wed 5am	Wed 6am	Wed 7am	Wed 8am	Wed 9am	Wed 10am	Wed 11am	Wed 12pm	Wed 1pm	Wed 2pm	Wed 3pm	Wed 4pm	Wed 5pm	Wed 6pm	Wed 7pm	Wed 8pm	Wed 9pm	Wed 10pm	Wed 11pm	Thu 12am		
610 Bridge	10 15 E	9 14 E	9 15 SE	9 14 SE	9 14 ESE	9 13 ESE	8 12 SE	7 10 ESE	6 9 ESE	6 8 ESE	5 7 SE	5 6 SE	6 5 SE	5 4 SE	5 4 SE	4 4 ESE	4 4 ESE	4 4 ESE	6 7 ESE	7 10 SE	8 12 SE	9 14 SE	9 14 SE	9 14 SSE	9 14 SE	9 14 SE	9 14 SE	10 15 SE	10 15 SE	9 12 SE	8 11 SE	7 10 SE	7 10 SE	6 9 SE	6 9 SE			
Kinder 1	10 15 E	9 14 E	9 14 E	9 14 E	9 14 E	9 13 E	8 12 E	7 10 E	6 9 E	6 8 E	5 7 E	5 6 E	6 5 E	5 4 E	5 4 E	4 4 E	4 4 E	4 4 E	6 7 E	7 10 E	8 12 E	9 14 E	9 14 E	9 14 E	9 14 E	9 14 E	9 14 E	10 15 E	10 15 E	9 12 E	8 11 E	7 10 E	7 10 E	6 9 E	6 9 E			
Greens Bayou	9 14 E	9 15 E	10 15 E	10 15 E	9 14 E	9 13 E	8 12 E	7 10 E	6 9 E	6 8 E	5 7 E	5 6 E	6 5 E	5 4 E	5 4 E	4 4 E	4 4 E	4 4 E	6 7 E	7 10 E	8 12 E	9 14 E	9 14 E	9 14 E	9 14 E	9 14 E	9 14 E	10 15 E	10 15 E	9 12 E	8 11 E	7 10 E	7 10 E	6 9 E	6 9 E			
Shell Crude	9 14 E	9 15 E	10 15 E	10 15 E	9 14 E	9 13 E	8 12 E	7 10 E	6 9 E	6 8 E	5 7 E	5 6 E	6 5 E	5 4 E	5 4 E	4 4 E	4 4 E	4 4 E	6 7 E	7 10 E	8 12 E	9 14 E	9 14 E	9 14 E	9 14 E	9 14 E	9 14 E	10 15 E	10 15 E	9 12 E	8 11 E	7 10 E	7 10 E	6 9 E	6 9 E			
Lynchburg Ferries	9 14 E	9 15 E	10 15 E	10 15 E	9 14 E	9 13 E	8 12 E	7 10 E	6 9 E	6 8 E	5 7 E	5 6 E	6 5 E	5 4 E	5 4 E	4 4 E	4 4 E	4 4 E	6 7 E	7 10 E	8 12 E	9 14 E	9 14 E	9 14 E	9 14 E	9 14 E	9 14 E	10 15 E	10 15 E	9 12 E	8 11 E	7 10 E	7 10 E	6 9 E	6 9 E			
Exxon 3	9 13 E	10 15 E	11 16 E	11 16 E	11 16 E	10 15 E	10 14 E	9 13 E	8 12 E	8 11 E	8 10 E	8 10 E	8 10 E	7 10 E	7 10 E	7 10 E	7 10 E	7 10 E	8 11 E	9 12 E	10 14 E	10 14 E	10 14 E	10 14 E	10 14 E	10 14 E	11 15 E	11 15 E	10 14 E	9 13 E	8 12 E	8 12 E	7 11 E	7 11 E	6 10 E	6 10 E		
Morgans Point	10 14 E	11 15 E	12 16 E	12 16 E	12 16 E	12 15 E	11 14 E	11 13 E	10 12 E	10 11 E	10 11 E	10 11 E	10 11 E	10 11 E	10 11 E	10 11 E	10 11 E	10 11 E	10 11 E	11 14 E	11 14 E	11 14 E	11 14 E	11 14 E	11 14 E	11 14 E	11 14 E	12 16 E	12 16 E	11 15 E	10 14 E	9 13 E	8 12 E	8 12 E	7 11 E	7 11 E	6 10 E	6 10 E
75/76	11 15 E	13 17 E	14 18 E	14 18 E	14 18 E	14 18 E	14 18 E	14 18 E	14 18 E	14 18 E	14 18 E	14 18 E	14 18 E	14 18 E	14 18 E	14 18 E	14 18 E	14 18 E	14 18 E	14 18 E	14 18 E	14 18 E	14 18 E	14 18 E	14 18 E	14 18 E	14 18 E	14 18 E	14 18 E	14 18 E	14 18 E	14 18 E	14 18 E	14 18 E	14 18 E	14 18 E	14 18 E	14 18 E
63/64	12 15 E	14 16 E	14 17 E	14 17 E	14 17 E	14 17 E	14 17 E	14 17 E	14 17 E	14 17 E	14 17 E	14 17 E	14 17 E	14 17 E	14 17 E	14 17 E	14 17 E	14 17 E	14 17 E	14 17 E	14 17 E	14 17 E	14 17 E	14 17 E	14 17 E	14 17 E	14 17 E	14 17 E	14 17 E	14 17 E	14 17 E	14 17 E	14 17 E	14 17 E	14 17 E	14 17 E	14 17 E	14 17 E
51/52	12 15 E	13 16 E	13 16 E	13 16 E	13 16 E	13 16 E	13 16 E	13 16 E	13 16 E	13 16 E	13 16 E	13 16 E	13 16 E	13 16 E	13 16 E	13 16 E	13 16 E	13 16 E	13 16 E	13 16 E	13 16 E	13 16 E	13 16 E	13 16 E	13 16 E	13 16 E	13 16 E	13 16 E	13 16 E	13 16 E	13 16 E	13 16 E	13 16 E	13 16 E	13 16 E	13 16 E	13 16 E	13 16 E
37/38	13 15 E	14 16 E	14 16 E	14 16 E	14 16 E	14 16 E	14 16 E	14 16 E	14 16 E	14 16 E	14 16 E	14 16 E	14 16 E	14 16 E	14 16 E	14 16 E	14 16 E	14 16 E	14 16 E	14 16 E	14 16 E	14 16 E	14 16 E	14 16 E	14 16 E	14 16 E	14 16 E	14 16 E	14 16 E	14 16 E	14 16 E	14 16 E	14 16 E	14 16 E	14 16 E	14 16 E	14 16 E	14 16 E
25/26	13 15 E	13 15 E	13 15 E	13 15 E	13 15 E	13 15 E	13 15 E	13 15 E	13 15 E	13 15 E	13 15 E	13 15 E	13 15 E	13 15 E	13 15 E	13 15 E	13 15 E	13 15 E	13 15 E	13 15 E	13 15 E	13 15 E	13 15 E	13 15 E	13 15 E	13 15 E	13 15 E	13 15 E	13 15 E	13 15 E	13 15 E	13 15 E	13 15 E	13 15 E	13 15 E	13 15 E	13 15 E	13 15 E
11/12	13 15 E	13 15 E	13 15 E	13 15 E	13 15 E	13 15 E	13 15 E	13 15 E	13 15 E	13 15 E	13 15 E	13 15 E	13 15 E	13 15 E	13 15 E	13 15 E	13 15 E	13 15 E	13 15 E	13 15 E	13 15 E	13 15 E	13 15 E	13 15 E	13 15 E	13 15 E	13 15 E	13 15 E	13 15 E	13 15 E	13 15 E	13 15 E	13 15 E	13 15 E	13 15 E	13 15 E	13 15 E	13 15 E
1 & 2 Bravo	15 16 E	15 16 E	15 16 E	15 16 E	15 16 E	15 16 E	15 16 E	15 16 E	15 16 E	15 16 E	15 16 E	15 16 E	15 16 E	15 16 E	15 16 E	15 16 E	15 16 E	15 16 E	15 16 E	15 16 E	15 16 E	15 16 E	15 16 E	15 16 E	15 16 E	15 16 E	15 16 E	15 16 E	15 16 E	15 16 E	15 16 E	15 16 E	15 16 E	15 16 E	15 16 E	15 16 E	15 16 E	15 16 E

NOTE: This is automated data that may/may not agree with the official BAM thinking that's found on the daily slides.
This data should be used as a guide only

Forecast Discussion

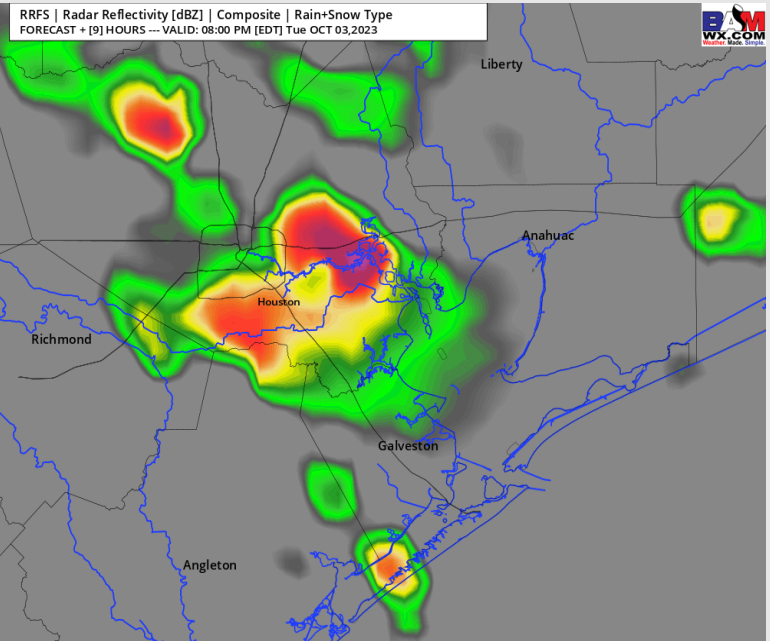
Precip: Scattered Shower and Thunderstorm chances will be ongoing through the remainder of the evening into the overnight. Data continues to trend wetter overall, and increasing chances to 50%-60% for all stations through 10PM-CT. After 10PM-CT for all stations, chances will drop to 40%. **Thunderstorms for all locations will hold potential for gusts of up to 28 -32 kts.**

Wind: Winds will be out of the SE throughout the evening. For Stations **N of Morgan's Point**, winds will gradually decrease from 13 - 17 kts to 9 - 13 kts by 10 PM through the overnight. Winds **S of Morgan's Point** will be 14-19 kts throughout the remainder of the evening. **Non T-Storm Gusts reaching 23 -27 kts will be possible S of Morgan's Point from 4PM-CT through the evening as well.**

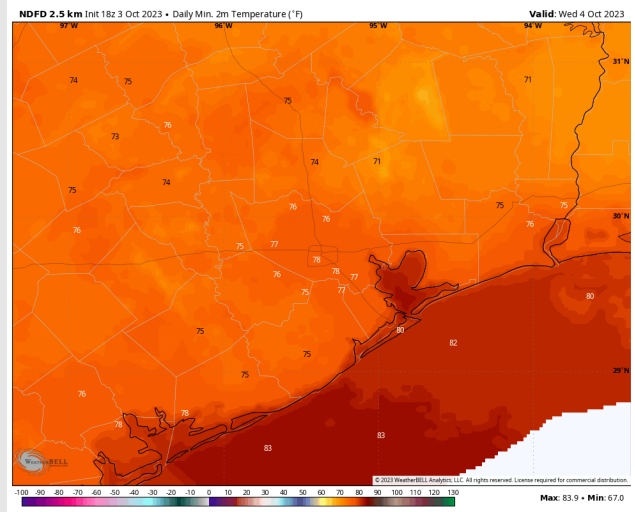
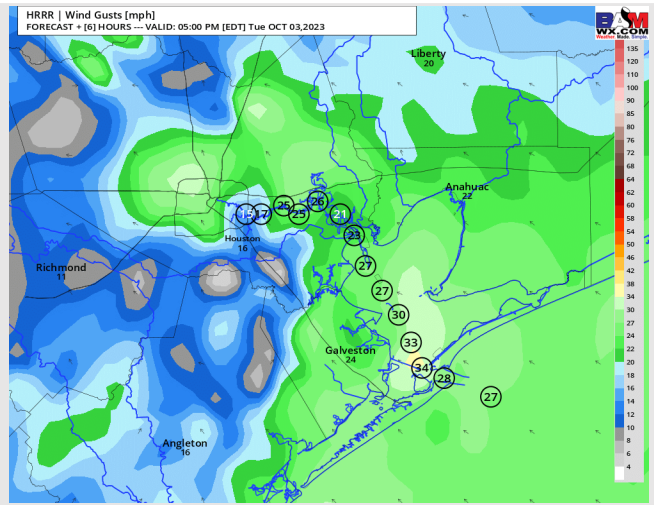
High Temps: **N of Morgan's Point:** Mid to Upper 70's. **S of Morgan's Point:** Lower 80s F.

Visibility: Not anticipating any visibility issues at this time.

Precip Image: 10 AM CT



**Wind Gusts:
4 PM CT**



**Low Temps
Wednesday**

Forecast Discussion

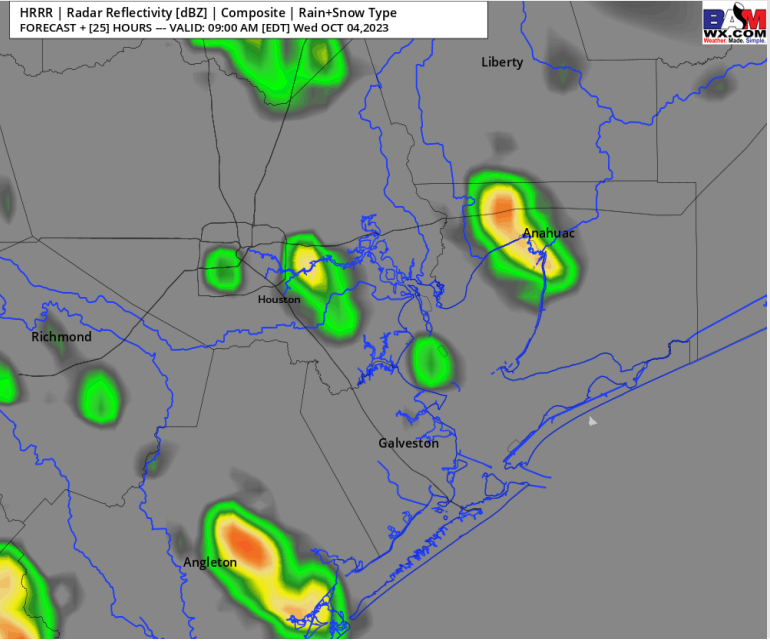
Precip: Isolated shower chances will be at play in the AM across all stations (20%). A heavier downpour will be possible towards sunrise in a hit or miss fashion, but severe weather is not anticipated nor favored. Towards 10 AM coverage will expand more to create scattered chances (40-50%) across all stations before coverage tapers off near 7 PM. Conditions will be dry by 9 PM.

Wind: Sustained SE winds continue for Wednesday. For Stations **N of Morgan's Point**, winds will be at 5-8 kts but will gradually increase to 8-12 kts by 11 AM. Winds decrease to 3-8 kts after 7 PM. Winds **S of Morgan's Point** will be 13-18 kts throughout the day. A few stronger sustained winds of 15-20 kts will be possible at the Boarding Station from 7-11 AM. **Gusts reaching 23-28 kts will be possible S of Morgan's Point from 7 AM - 2 PM.**

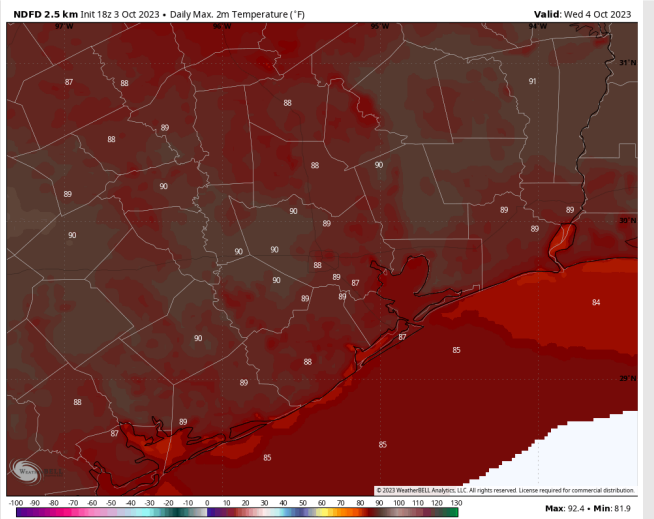
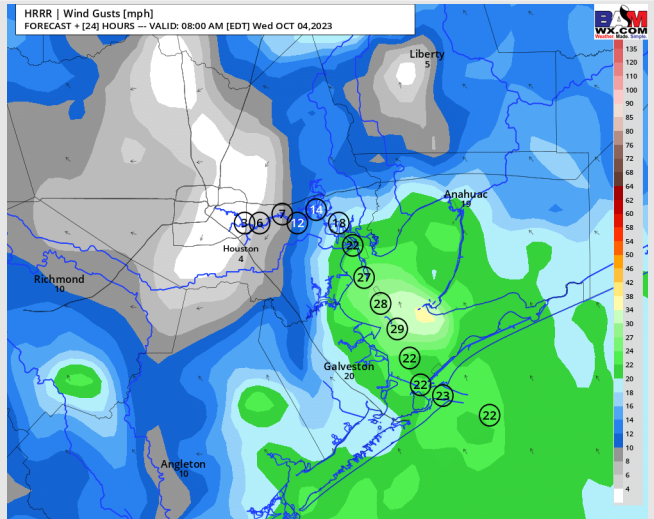
High Temps: **N of Morgan's Point:** Upper 80s to near 90 F. **S of Morgan's Point:** Mid to upper 80s F.

Visibility: Not anticipating any visibility issues currently.

Precip Image: 8 AM CT



Wind Speed:
7 AM CT



High Temps
Wednesday

Houston Pilots: Thu. 10/5/2023



Forecast Discussion

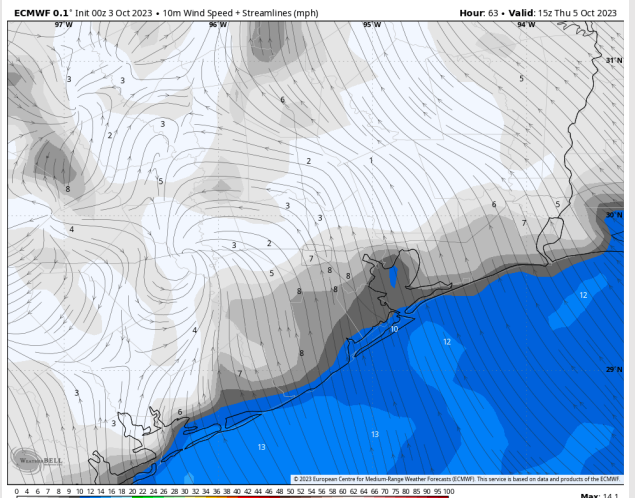
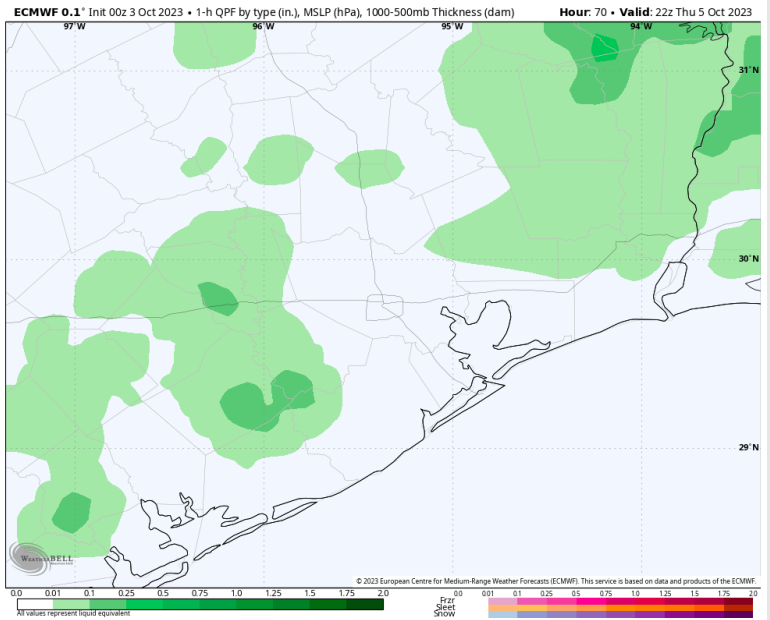
Precip: Anticipating dry conditions through 2 PM until scattered precip chances work their way into areas N of Morgan's Point for the evening hours near 3 PM with a slowly progressing cold front.

Wind: Winds are expected to be out of the S/SE throughout the day on THU. For Stations N of Morgan's Point, winds will be at 5 - 10 kts for the entire day. Winds S of Morgan's Point will be start at 11 -16 kts through 8 AM the gradually decrease to 5-10 kts by 11 AM and remain there the rest of the day. By Sunset, winds at all stations will be 2 -7 kts.

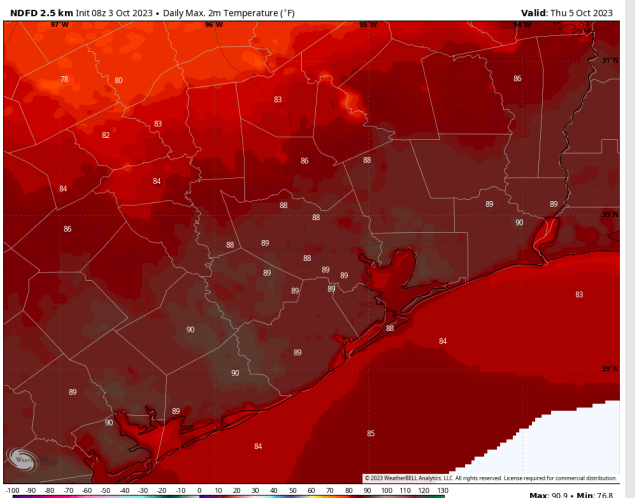
Low Temps: N of Morgan's Point: Upper 80s F to near 90 F. S of Morgan's Point: Mid 80s F.

Visibility: No visibility concerns expected for today.

Precip Image: 5 PM CT

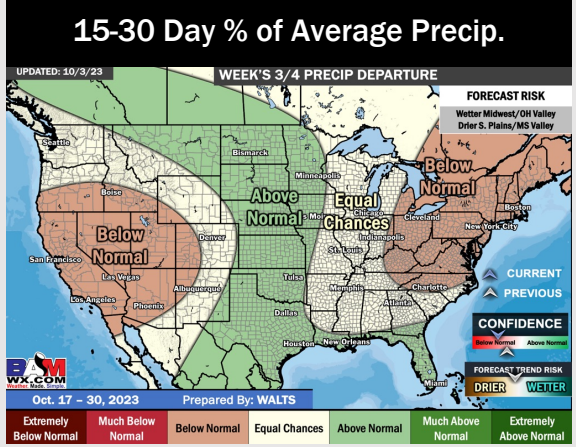
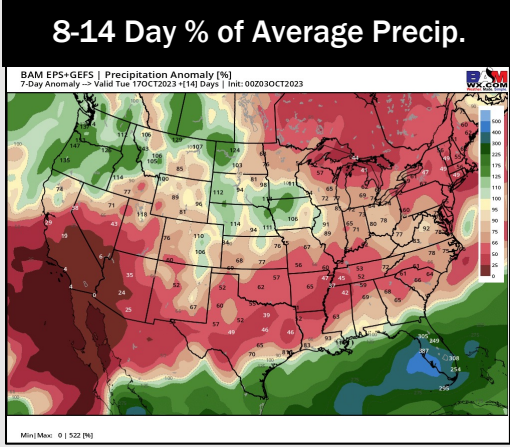
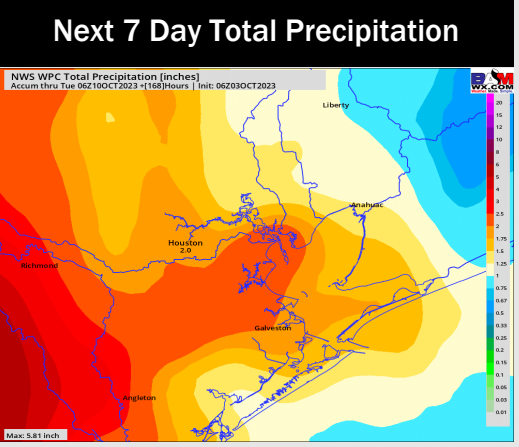
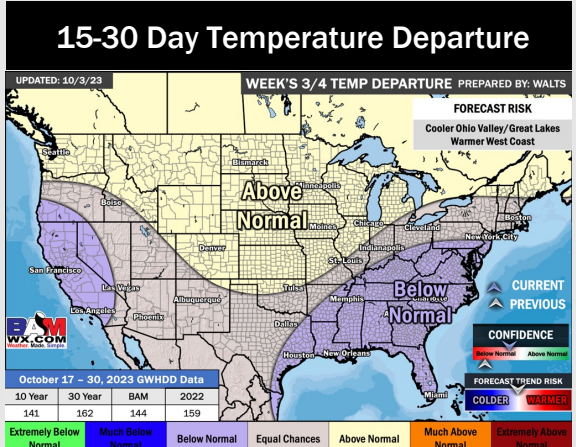
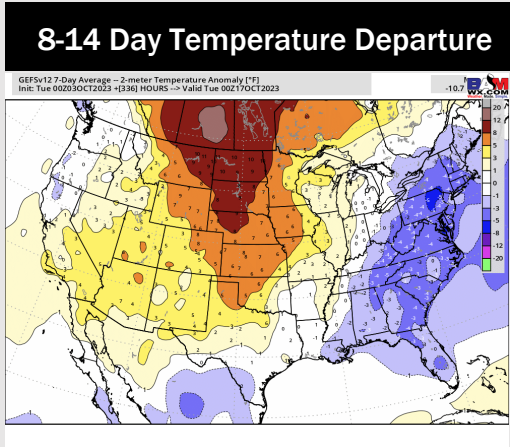
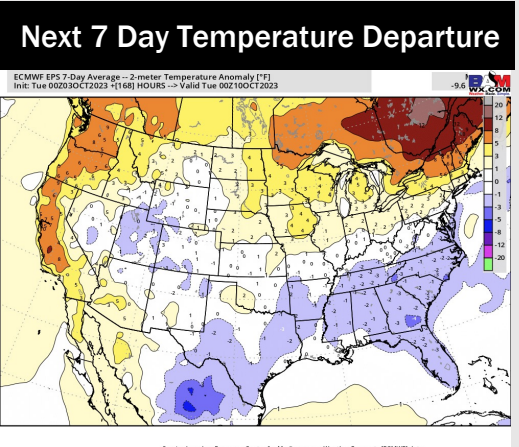


Wind Speed:
10 AM CT



High Temps
Thursday

Houston Pilots: 10/3/23



- Rain chances will continue to be at play over the next 48 hours. A cold front on Thu/Fri will look to cool temps. Until then, Temperatures will remain slightly above normal.
- Generally drier/slightly colder than average temperatures are expected into the week 2 timeframe.
- Below normal temperatures and above normal chances for precipitation are favored in the weeks 3/4 timeframe.