

# Houston Pilots Forecast Package



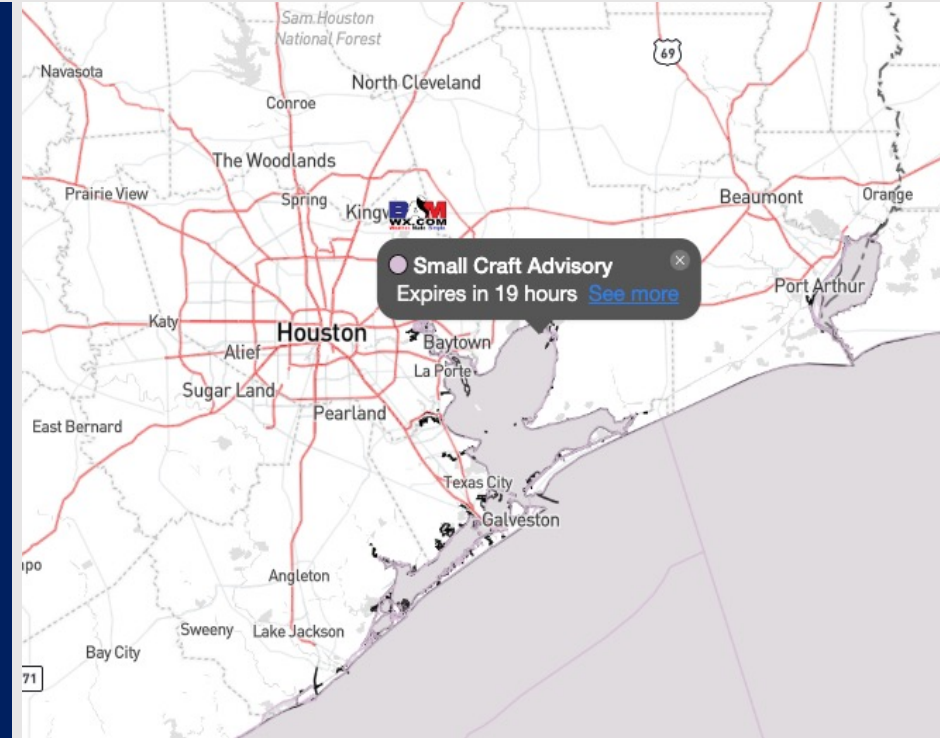
Updated: 3:30 PM CT

Tuesday, October 31, 2023

Forecaster: John Kemper

## Weather Headlines

- **With increased winds, increasing wave heights of 3 – to locally 5ft will be possible through late Wed AM. Check out the slide below for thinking on timing with wave height impacts.**
- **Passing of cold front will usher in some cooler temperatures this week.**
- **Elevated winds anticipated through WED AM. Check slides below for more info.**
- **No visibility concerns the next few days.**



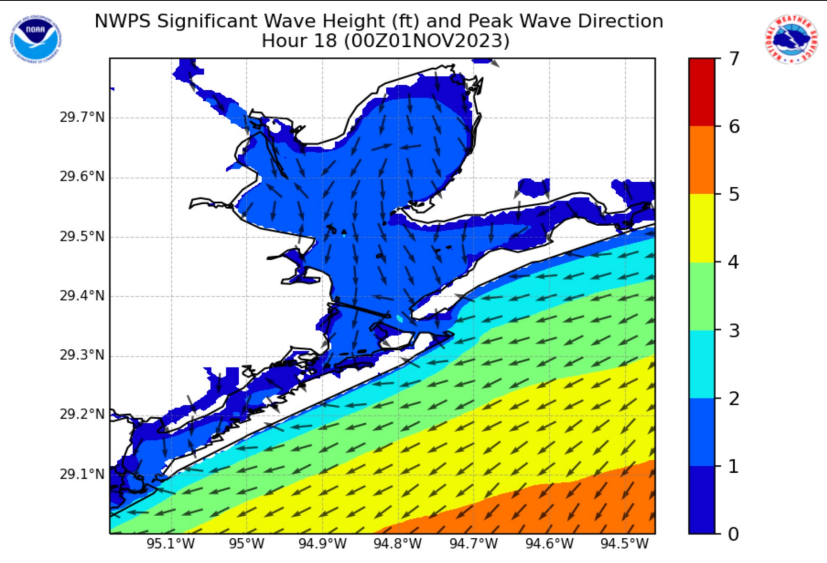
**Radar/NWS Alerts: 3:15 PM CT**



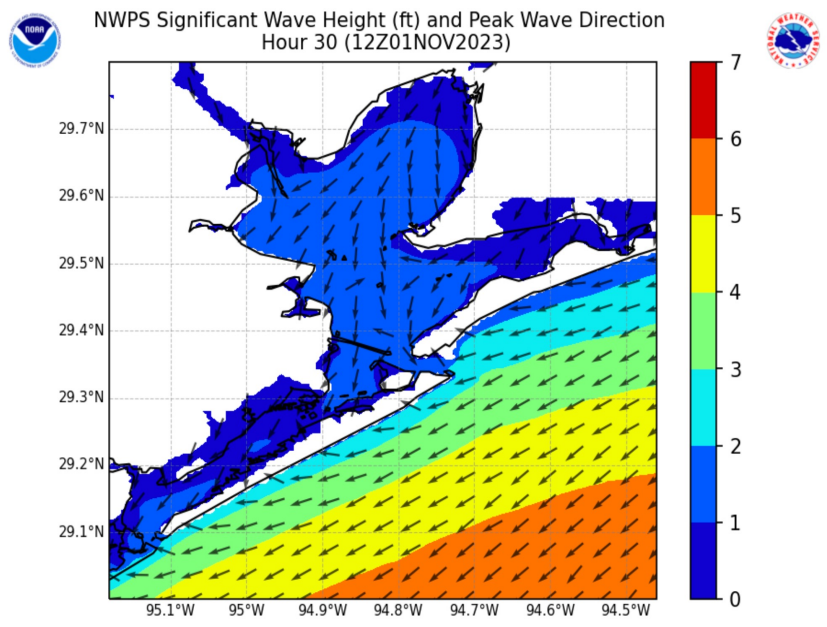
As always, please do not hesitate to reach out to us with any forecast questions via the chat option on the Weather Porthole or our on-call number, **(317)-560-8122** press 1 for forecast questions.

# Houston Pilots Wave Update

## Significant Wave Height 4-Panel



7 PM CT  
Tuesday



7 AM CT  
Wednesday

Elevated winds out of the NW will bring in the potential for low water levels and increased wave heights.

3 to locally 5-foot waves will be possible through WED AM (10 AM). As winds weaken into WED, waves will subside.

This threat is only for the boarding station with increased wave heights off further offshore. However, choppy waters will continue to be in play for all stations in bay area

# Houston Pilots Visibility Chart (miles)



Time	Tue 2pm	Tue 3pm	Tue 4pm	Tue 5pm	Tue 6pm	Tue 7pm	Tue 8pm	Tue 9pm	Tue 10pm	Tue 11pm	Wed 12am	Wed 1am	Wed 2am	Wed 3am	Wed 4am	Wed 5am	Wed 6am	Wed 7am	Wed 8am	Wed 9am	Wed 10am	Wed 11am	Wed 12pm	Wed 1pm	Wed 2pm	Wed 3pm	Wed 4pm	Wed 5pm	Wed 6pm	Wed 7pm	Wed 8pm	Wed 9pm	Wed 10pm	Wed 11pm	Thu 12am	Thu 1am		
610 Bridge	10	10	10	10	10	10	10	10	10	10	10	10	10	10	10	10	10	10	10	10	10	10	10	10	10	10	10	10	10	10	10	10	10	10	10	10		
Kinder 1	10	10	10	10	10	10	10	10	10	10	10	10	10	10	10	10	10	10	10	10	10	10	10	10	10	10	10	10	10	10	10	10	10	10	10	10	10	
Greens Bayou	10	10	10	10	10	10	10	10	10	10	10	10	10	10	10	10	10	10	10	10	10	10	10	10	10	10	10	10	10	10	10	10	10	10	10	10	10	
Shell Crude	10	10	10	10	10	10	10	10	10	10	10	10	10	10	10	10	10	10	10	10	10	10	10	10	10	10	10	10	10	10	10	10	10	10	10	10	10	10
Lynchburg Ferries	10	10	10	10	10	10	10	10	10	10	10	10	10	10	10	10	10	10	10	10	10	10	10	10	10	10	10	10	10	10	10	10	10	10	10	10	10	10
Exxon 3	10	10	10	10	10	10	10	10	10	10	10	10	10	10	10	10	10	10	10	10	10	10	10	10	10	10	10	10	10	10	10	10	10	10	10	10	10	10
Morgans Point	10	10	10	10	10	10	10	10	10	10	10	10	10	10	10	10	10	10	10	10	10	10	10	10	10	10	10	10	10	10	10	10	10	10	10	10	10	10
75/76	10	10	10	10	10	10	10	10	10	10	10	10	10	10	10	10	10	10	10	10	10	10	10	10	10	10	10	10	10	10	10	10	10	10	10	10	10	10
63/64	10	10	10	10	10	10	10	10	10	10	10	10	10	10	10	10	10	10	10	10	10	10	10	10	10	10	10	10	10	10	10	10	10	10	10	10	10	10
51/52	10	10	10	10	10	10	10	10	10	10	10	10	10	10	10	10	10	10	10	10	10	10	10	10	10	10	10	10	10	10	10	10	10	10	10	10	10	10
37/38	10	10	10	10	10	10	10	10	10	10	10	10	10	10	10	10	10	10	10	10	10	10	10	10	10	10	10	10	10	10	10	10	10	10	10	10	10	10
25/26	10	10	10	10	10	10	10	10	10	10	10	10	10	10	10	10	10	10	10	10	10	10	10	10	10	10	10	10	10	10	10	10	10	10	10	10	10	10
11/12	10	10	10	10	10	10	10	10	10	10	10	10	10	10	10	10	10	10	10	10	10	10	10	10	10	10	10	10	10	10	10	10	10	10	10	10	10	10
1 & 2 Bravo	10	10	10	10	10	10	10	10	10	10	10	10	10	10	10	10	10	10	10	10	10	10	10	10	10	10	10	10	10	10	10	10	10	10	10	10	10	10

**NOTE: This is automated data that may/may not agree with the official BAM thinking that's found on the daily slides or special visibility report slides. This data should be used as a guide only**

# Houston Pilots Wind Chart



## Forecast Confidence



## Example

Sustained wind 13 Knots  
Gusts 18 Knots  
Wind from the N

WS: 13  
G:18  
N

Time Knots	Tue 2pm	Tue 3pm	Tue 4pm	Tue 5pm	Tue 6pm	Tue 7pm	Tue 8pm	Tue 9pm	Tue 10pm	Tue 11pm	Wed 12am	Wed 1am	Wed 2am	Wed 3am	Wed 4am	Wed 5am	Wed 6am	Wed 7am	Wed 8am	Wed 9am	Wed 10am	Wed 11am	Wed 12pm	Wed 1pm	Wed 2pm	Wed 3pm	Wed 4pm	Wed 5pm	Wed 6pm	Wed 7pm	Wed 8pm	Wed 9pm	Wed 10pm	Wed 11pm	Thu 12am	Thu 1am		
610 Bridge	9	11	11	10	9	7	7	6	6	4	4	4	4	5	8	8	7	8	8	8	8	8	7	6	6	6	6	6	5	4	4	4	4	3	4			
	17	16	17	18	17	19	15	14	13	10	10	10	10	10	11	12	12	11	12	12	12	12	11	10	9	9	9	8	8	8	8	8	8	8	8	8	6	
Kinder 1	9	11	11	11	9	7	7	6	6	4	4	4	4	4	5	8	8	7	8	8	8	8	8	7	6	6	6	6	5	4	4	4	3	4				
	17	16	17	18	18	19	16	14	13	10	10	10	10	11	11	12	12	11	12	12	12	10	10	9	9	9	9	9	8	8	7	6	6	6	5	6		
Greens Bayou	9	11	11	11	9	7	7	6	6	4	4	4	4	4	5	8	8	7	8	8	8	8	8	7	6	6	6	6	5	4	4	4	4	4	4			
	17	16	18	18	18	19	16	15	13	11	10	11	11	11	11	12	12	11	11	12	12	10	10	9	9	9	9	9	8	8	8	7	6	6	6	5	6	
Shell Crude	9	11	11	11	9	7	7	6	6	4	4	4	4	4	5	8	8	7	8	8	8	8	8	7	6	6	6	6	5	4	4	4	4	4	4			
	17	17	18	18	18	19	18	16	14	11	11	11	12	11	13	12	12	12	12	12	12	10	10	9	9	9	9	9	8	8	7	7	6	6	6	6		
Lynchburg Ferries	9	11	11	11	9	7	7	6	6	4	4	4	4	4	5	8	8	7	8	8	8	8	8	7	6	6	6	6	5	4	4	4	4	4	4			
	16	17	18	18	18	19	17	14	12	11	12	12	12	12	12	12	12	11	11	12	12	11	10	9	9	10	9	9	8	8	7	7	6	6	6	6		
Exxon 3	9	11	12	11	9	7	8	7	5	4	4	4	4	5	5	9	9	9	9	9	9	9	8	8	7	7	7	7	6	5	5	5	5	5	5			
	16	17	18	18	18	20	21	20	18	15	14	14	14	15	14	13	12	12	12	13	12	11	10	9	9	9	10	9	8	7	7	7	7	7	7	7		
Morgans Point	11	12	13	12	11	10	10	9	8	7	7	7	7	8	12	12	11	11	11	11	11	11	9	8	8	8	8	8	8	7	7	7	7	7	7	7		
	16	17	19	19	18	20	22	23	22	20	18	18	18	18	17	15	15	14	14	14	13	11	10	10	10	10	10	10	10	9	9	9	9	9	9	8	8	
75/76	14	15	16	16	16	16	17	16	15	15	14	13	13	14	16	16	16	16	15	14	12	9	8	8	8	9	9	10	11	10	10	10	10	10	10	10		
	18	18	19	19	20	21	23	24	25	23	22	21	21	19	18	18	18	18	17	16	16	13	11	11	11	11	11	11	11	11	11	11	11	11	11	11	11	
63/64	15	17	18	18	19	19	19	20	21	20	19	18	17	17	16	19	19	19	19	17	16	13	11	9	9	9	9	10	11	10	10	10	10	10	10	11	11	
	18	19	20	20	21	21	23	24	26	25	24	23	21	19	18	21	21	21	20	19	17	14	12	12	12	11	11	11	12	12	11	11	11	11	11	12	12	
51/52	16	17	18	19	19	19	20	22	22	21	19	18	18	16	19	19	19	19	19	17	16	13	11	9	9	9	9	10	11	10	10	10	10	10	10	10	11	11
	19	20	20	21	21	23	25	26	26	25	23	21	20	17	21	21	21	20	19	17	16	14	13	12	12	11	11	11	12	11	11	10	10	10	10	11	11	
37/38	16	18	18	19	20	21	22	23	22	21	20	18	18	16	19	19	19	19	19	18	16	14	12	10	9	9	9	9	10	10	9	9	9	9	9	9	9	10
	20	20	21	20	22	23	25	27	26	24	22	21	18	21	21	21	20	19	18	15	13	12	12	12	11	10	10	11	10	10	10	10	10	10	10	10	11	11
25/26	16	17	17	18	18	20	20	21	21	20	18	17	16	15	18	18	18	18	17	17	15	13	12	10	9	9	9	9	9	8	8	8	8	8	8	8	9	9
	20	20	20	21	22	23	25	26	27	26	24	22	21	18	20	20	20	19	18	17	15	13	12	11	11	10	10	10	10	9	9	9	9	9	9	9	9	9
11/12	15	16	16	17	17	17	18	19	19	18	17	16	15	15	17	17	18	17	16	15	13	12	10	9	9	9	9	9	9	8	8	8	8	8	8	8	9	9
	19	19	20	20	21	22	23	24	26	27	26	24	22	21	19	19	19	19	19	18	17	14	13	12	11	10	10	10	10	10	10	10	10	10	10	10	10	10
1 & 2 Bravo	17	17	18	18	20	21	22	23	24	23	22	21	20	19	22	22	22	22	21	20	18	15	14	11	9	9	9	10	10	11	11	10	10	10	10	11	11	11
	21	20	20	20	21	22	24	26	27	28	27	25	23	22	20	24	24	24	23	21	20	17	15	12	11	10	10	10	11	12	12	11	12	11	11	11	12	

NOTE: This is automated data that may/may not agree with the official BAM thinking that's found on the daily slides. This data should be used as a guide only

## Forecast Discussion

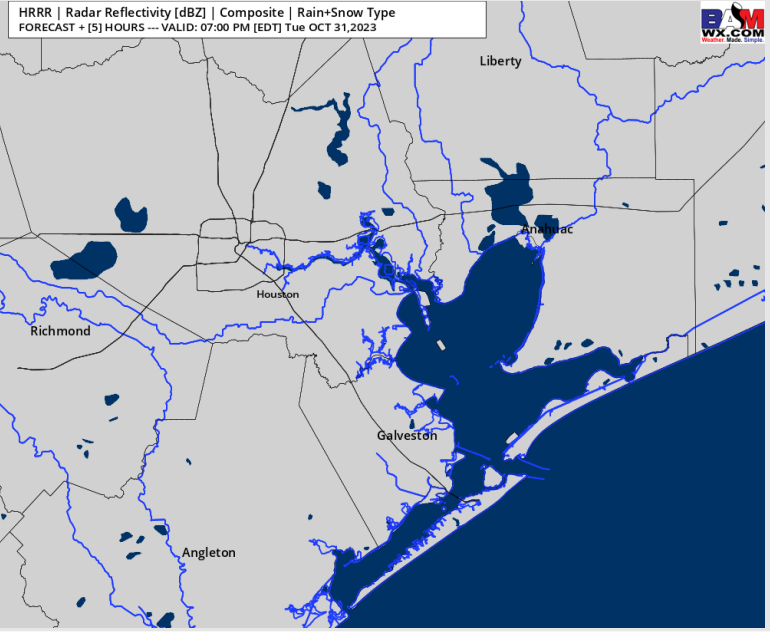
**Precip:** On and off light showers/drizzle will be likely through the AM with coverage gradually tapering down in the late AM to early PM. Dry conditions expected after 4 PM. Intensity is expected to remain light in nature.

**Wind:** Winds will be sustained from the N and will remain elevated beyond the cold front passage. Winds **N of Morgan's Point** will be at 9 - 14 kts throughout majority of the day before decreasing to 5 - 10 kts after 8 PM. Winds **S of Morgan's Point** will be at 20 - 25 kts through the AM with **gusts near 30 knots**. Towards 7 PM, winds will uptick to 23 - 27 kts. Winds will not start a weakening trend until early WED AM (~3AM). **Gusts near 30 knots will continue to be possible for locations, especially south of 11/12 Station.**

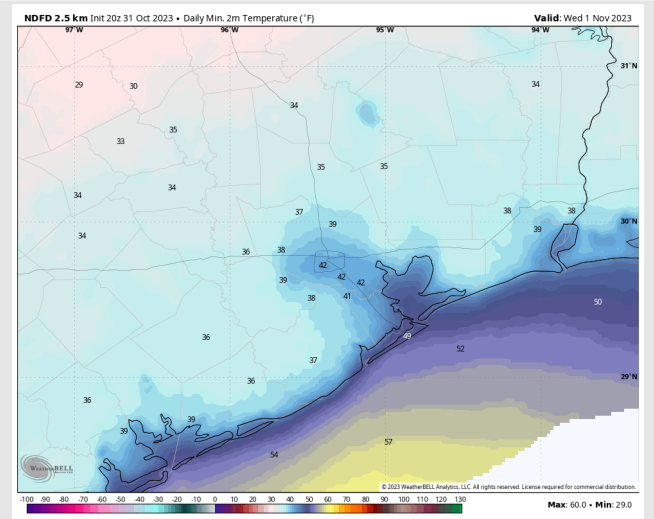
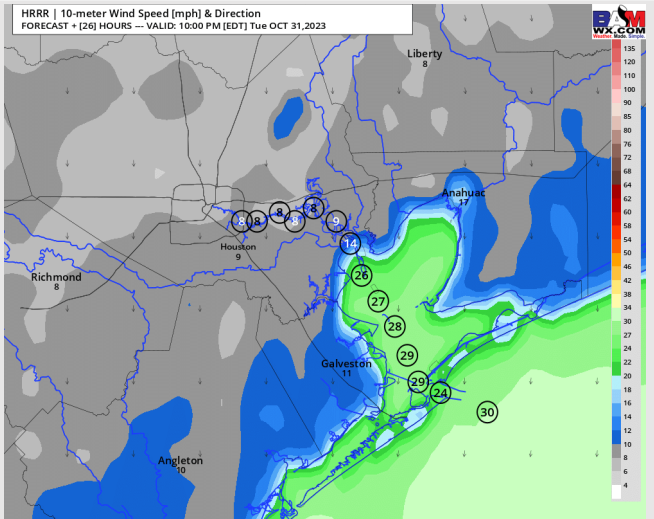
**Low Temps:** **N of Morgan's Point:** Lower 40's F. **S of Morgan's Point:** Lower 50s F.

**Visibility:** Not anticipating any visibility issues currently.

## Precip Image: 6 PM CT



Wind Speed:  
9 PM CT



Low Temps  
Wednesday

## Forecast Discussion

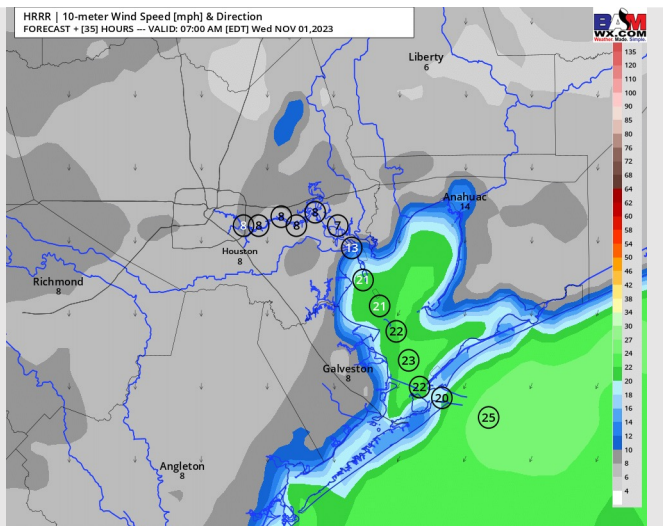
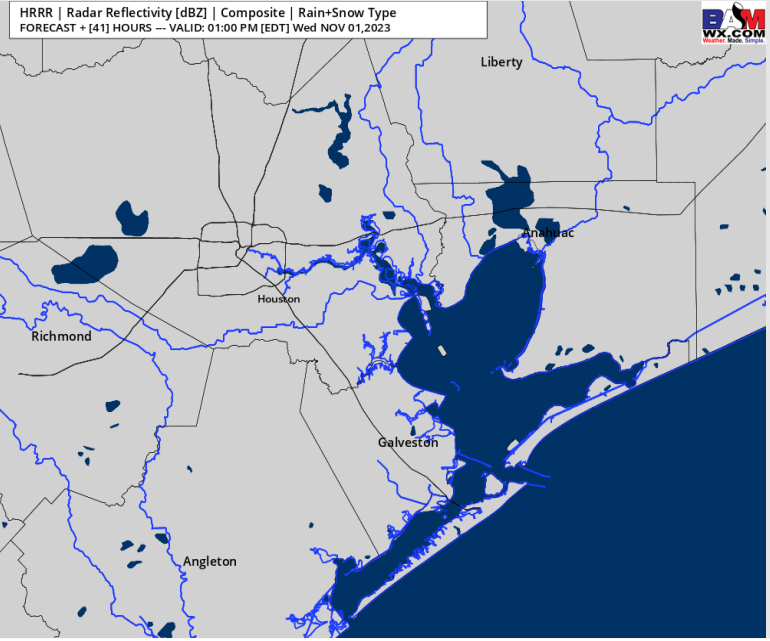
**Precip:** Favoring dry conditions for Wednesday.

**Wind:** Winds out of the N will gradually shift out of the N/NE by 12 PM. For Stations **N of Morgan's Point** winds will increase begin the day at 3-8 kts, calming to 2 - 6 kts after 12 PM. For stations **S of Morgan's Point** winds will begin to weaken at 20 - 25 kts 10 AM (wind gusts to near 25-28 knots still possible). After 10 AM, winds will begin to gradually decrease to 7-12 kts by 2 PM.

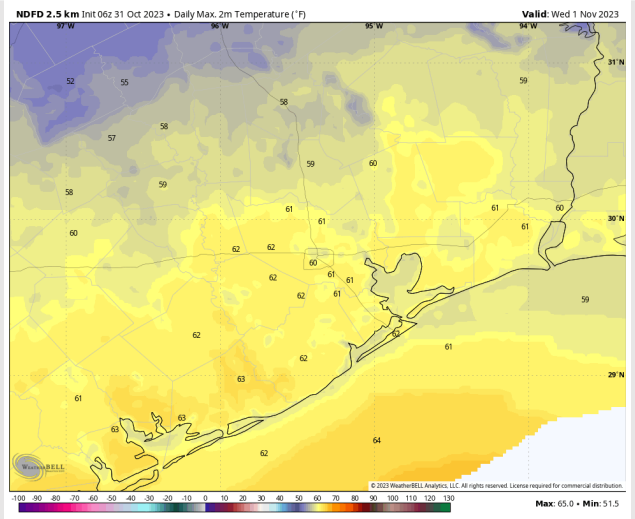
**High Temps:** **N of Morgan's Point:** Low 60's F. **S of Morgan's Point:** Low 60s F

**Visibility:** Not anticipating any visibility issues at this time.

## Precip Image: 12 PM CT



Wind Speed:  
6 AM CT

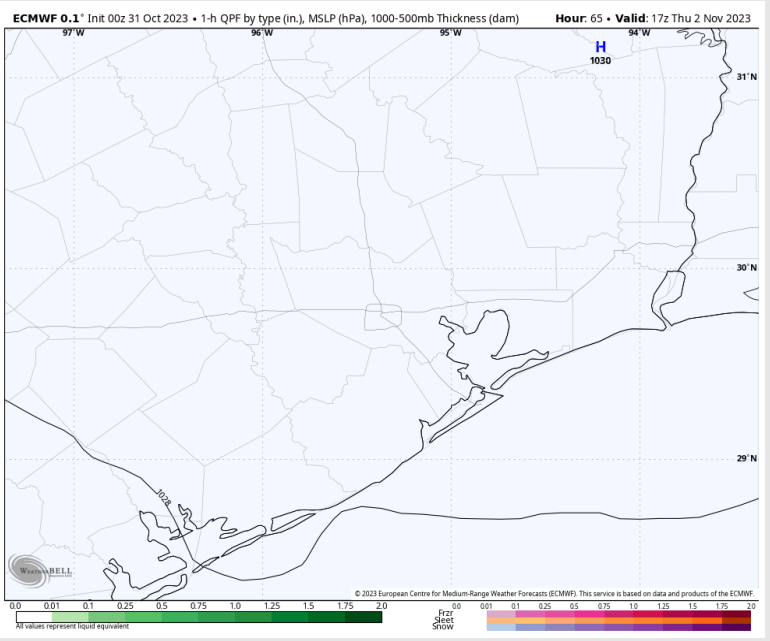


High Temps  
Wednesday

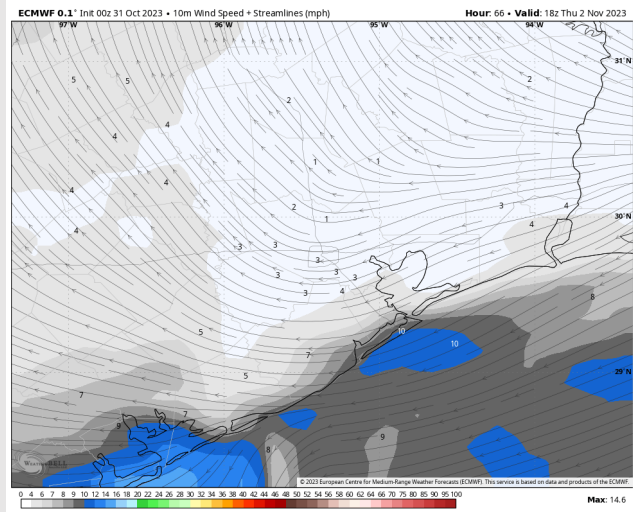
## Forecast Discussion

- Precip:** Favoring dry conditions for Thursday.
- Wind:** Winds will be out of the NE through 1 PM before shifting to out of the E/SE the rest of the day Thursday. Winds **N of Morgan's Point** will be at 2 – 7 kts the entire day. **S of Morgan's Point** will be at 7 – 12 kts through 1 PM before slightly decreasing to 5-10 kts.
- High Temps THU:** **N of Morgan's Point:** Upper 60s F. **S of Morgan's Point:** Upper 60s F.
- Visibility:** No visibility concerns for Thursday.

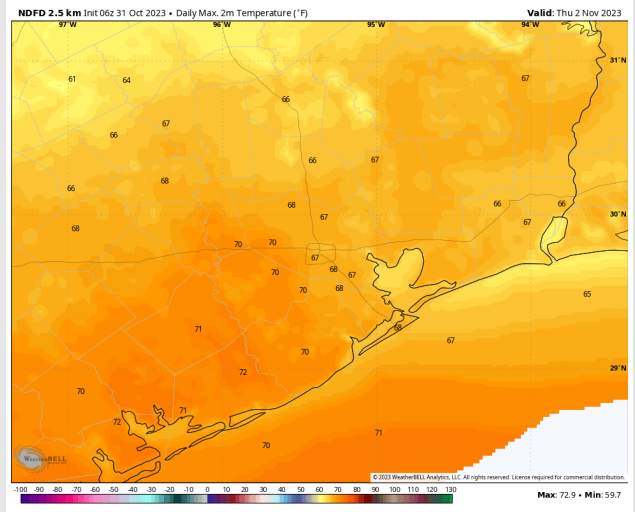
## Precip Image: 7 PM CT



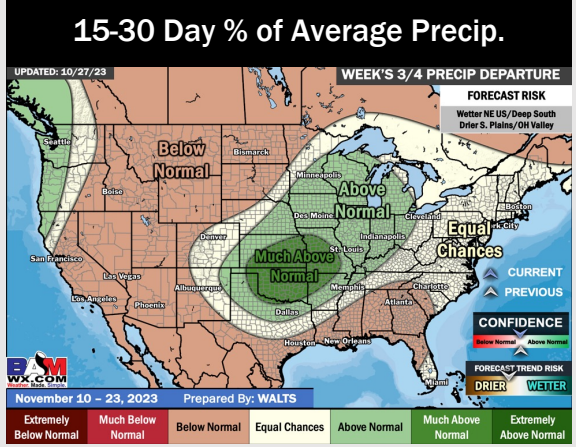
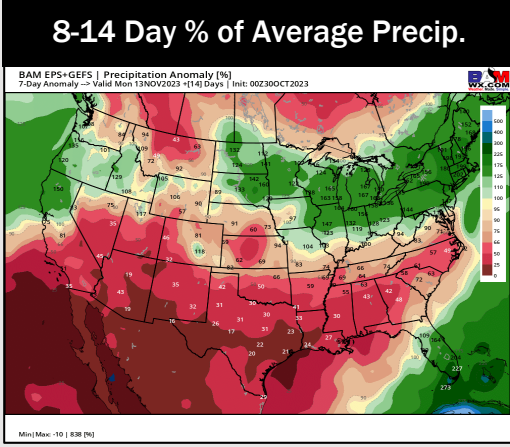
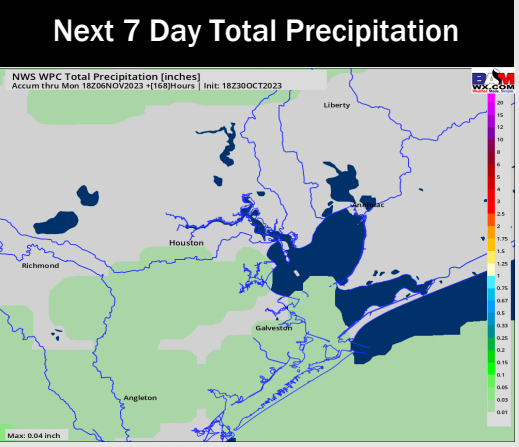
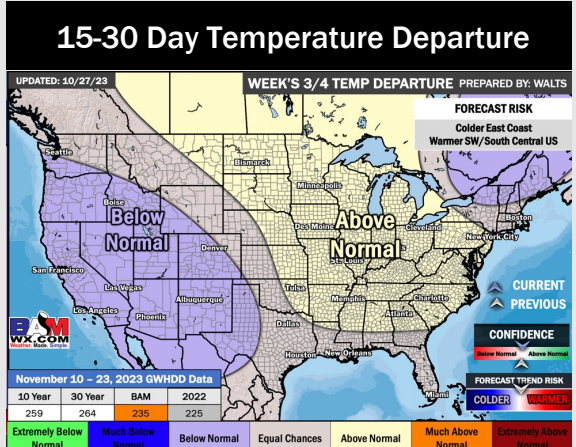
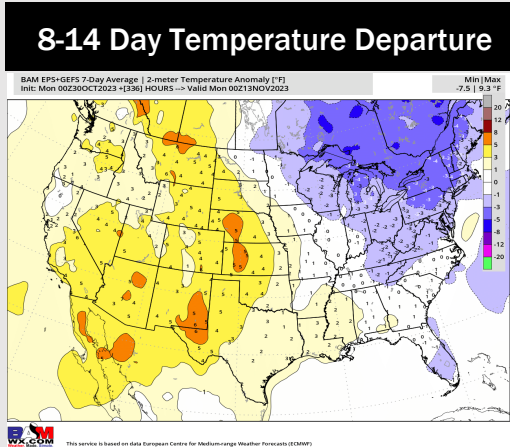
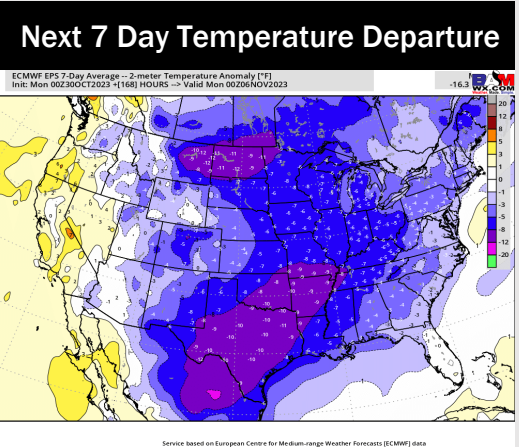
Wind Speed  
1 PM CT



High Temps  
Thursday



# Houston Pilots: 10/31/23



- High pressure settles in behind this current cold front keeping drier conditions after today with minor chances into the weekend. Temperatures will remain below normal with warmer temperatures returning into the weekend.
- Below normal rainfall and seasonal to slightly above normal temperatures are expected into the week 2 timeframe.
- Seasonal temperatures and below normal chances for precipitation are favored in the weeks 3/4 timeframe.