

Houston Pilots Forecast Package



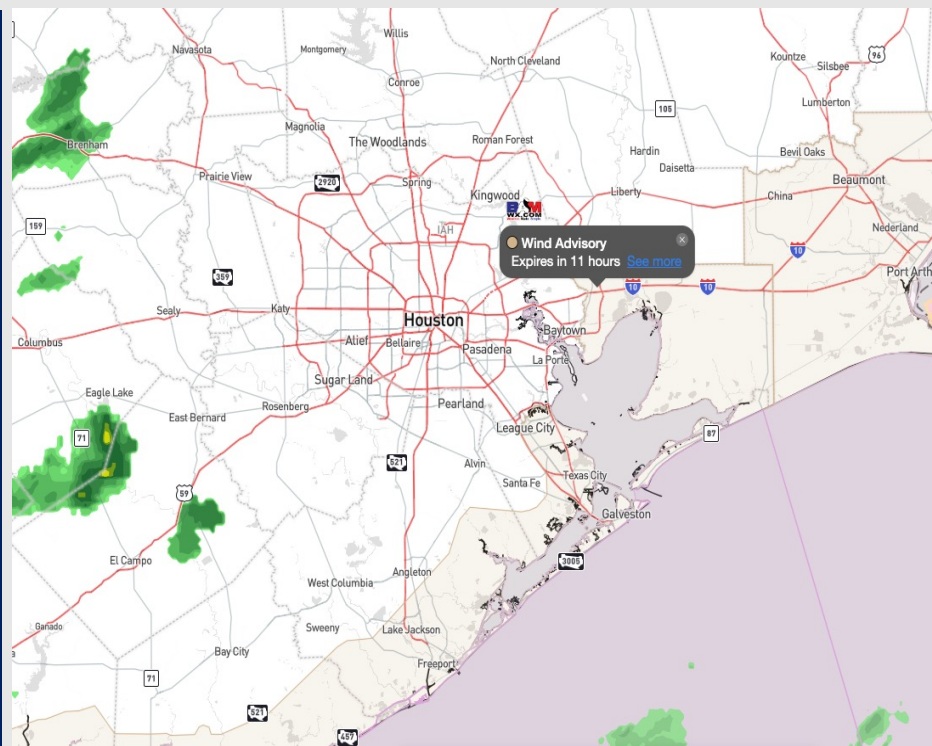
Updated: 2:20 AM CT

Tuesday, October 31, 2023

Forecaster: Jonathan Kipper

Weather Headlines

- With increased wind heights, increased wave heights of 3 - 6ft will be possible starting late this evening into WED AM. Check out the slide below for thinking on timing with wave height impacts.
- Light precipitation chances through throughout the day today.
- Passing of cold front will usher in some cooler temperatures this week.
- Elevated winds anticipated through WED AM. Check slides below for more info.
- No visibility concerns the next few days.



Radar/NWS Alerts: 2:15 AM CT

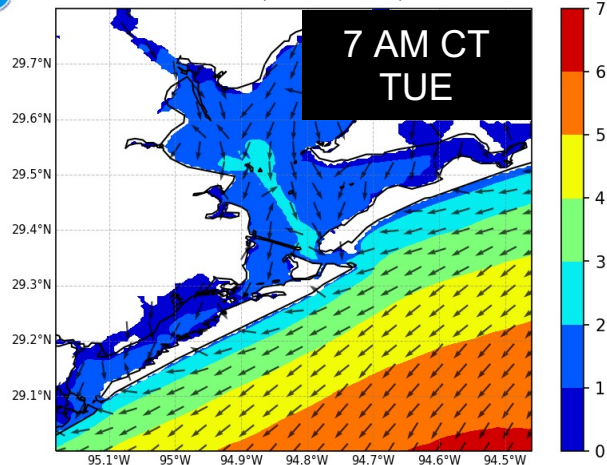


As always, please do not hesitate to reach out to us with any forecast questions via the chat option on the Weather Porthole or our on-call number, **(317)-560-8122** press 1 for forecast questions.

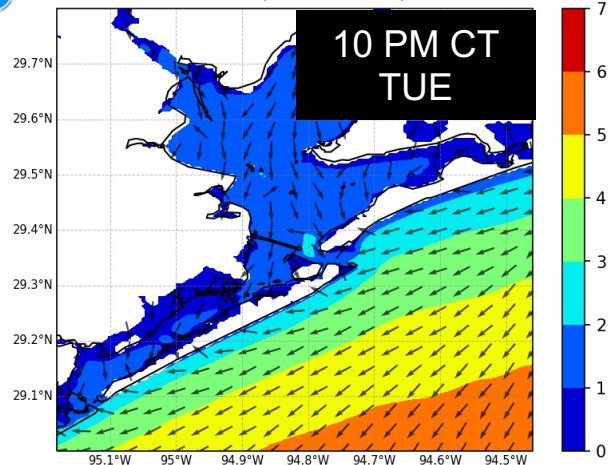
Houston Pilots Wave Update

Significant Wave Height 4-Panel

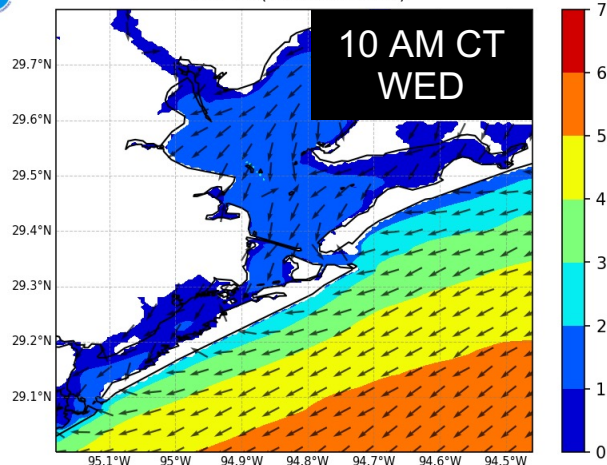
NWPS Significant Wave Height (ft) and Peak Wave Direction
Hour 18 (12Z31OCT2023)



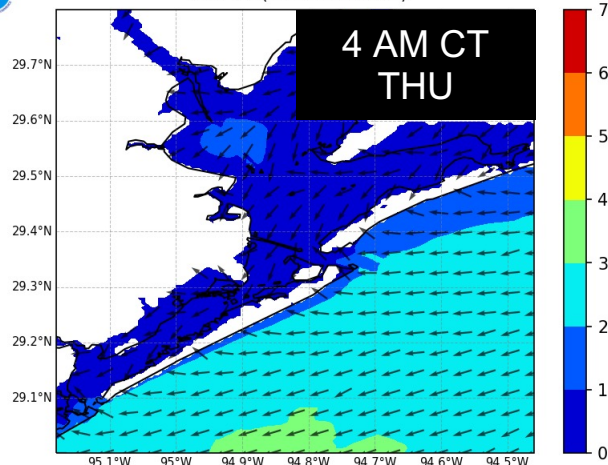
NWPS Significant Wave Height (ft) and Peak Wave Direction
Hour 33 (03Z01NOV2023)



NWPS Significant Wave Height (ft) and Peak Wave Direction
Hour 45 (15Z01NOV2023)



NWPS Significant Wave Height (ft) and Peak Wave Direction
Hour 63 (09Z02NOV2023)



Elevated winds out of the NW will bring in the potential for low water levels and increased wave heights.

3 to locally 6-foot waves will be into tomorrow early WED AM (10 AM). As winds weaken into WED, waves will subside.

This threat is mainly for the boarding station with increased wave heights off further offshore.

Houston Pilots Visibility Chart (miles)



Time	Tue 1am	Tue 2am	Tue 3am	Tue 4am	Tue 5am	Tue 6am	Tue 7am	Tue 8am	Tue 9am	Tue 10am	Tue 11am	Tue 12pm	Tue 1pm	Tue 2pm	Tue 3pm	Tue 4pm	Tue 5pm	Tue 6pm	Tue 7pm	Tue 8pm	Tue 9pm	Tue 10pm	Tue 11pm	Wed 12am	Wed 1am	Wed 2am	Wed 3am	Wed 4am	Wed 5am	Wed 6am	Wed 7am	Wed 8am	Wed 9am	Wed 10am	Wed 11am	Wed 12pm
610 Bridge	10	10	10	10	10	10	10	10	10	10	10	10	10	10	10	10	10	10	10	10	10	10	10	10	10	10	10	10	10	10	10	10	10	10	10	10
Kinder 1	10	10	10	10	10	10	10	10	10	10	10	10	10	10	10	10	10	10	10	10	10	10	10	10	10	10	10	10	10	10	10	10	10	10	10	10
Greens Bayou	10	10	10	10	10	10	10	10	10	10	10	10	10	10	10	10	10	10	10	10	10	10	10	10	10	10	10	10	10	10	10	10	10	10	10	10
Shell Crude	10	10	10	10	10	10	10	10	10	10	10	10	10	10	10	10	10	10	10	10	10	10	10	10	10	10	10	10	10	10	10	10	10	10	10	10
Lynchburg Ferries	10	10	10	10	10	10	10	10	10	10	10	10	10	10	10	10	10	10	10	10	10	10	10	10	10	10	10	10	10	10	10	10	10	10	10	10
Exxon 3	10	10	10	10	10	10	10	10	10	10	10	10	10	10	10	10	10	10	10	10	10	10	10	10	10	10	10	10	10	10	10	10	10	10	10	10
Morgans Point	10	10	10	10	10	10	10	10	10	10	10	10	10	10	10	10	10	10	10	10	10	10	10	10	10	10	10	10	10	10	10	10	10	10	10	10
75/76	10	10	10	10	10	10	10	10	10	10	10	10	10	10	10	10	10	10	10	10	10	10	10	10	10	10	10	10	10	10	10	10	10	10	10	10
63/64	10	10	10	10	10	10	10	10	10	10	10	10	10	10	10	10	10	10	10	10	10	10	10	10	10	10	10	10	10	10	10	10	10	10	10	10
51/52	10	10	10	10	10	10	10	10	10	10	10	10	10	10	10	10	10	10	10	10	10	10	10	10	10	10	10	10	10	10	10	10	10	10	10	10
37/38	10	10	10	10	10	10	10	10	10	10	10	10	10	10	10	10	10	10	10	10	10	10	10	10	10	10	10	10	10	10	10	10	10	10	10	10
25/26	10	10	10	10	10	10	10	10	10	10	10	10	10	10	10	10	10	10	10	10	10	10	10	10	10	10	10	10	10	10	10	10	10	10	10	10
11/12	10	10	10	10	10	10	10	10	10	10	10	10	10	10	10	10	10	10	10	10	10	10	10	10	10	10	10	10	10	10	10	10	10	10	10	10
1 & 2 Bravo	10	10	10	10	10	10	10	10	10	10	10	10	10	10	10	10	10	10	10	10	10	10	10	10	10	10	10	10	10	10	10	10	10	10	10	10

NOTE: This is automated data that may/may not agree with the official BAM thinking that's found on the daily slides or special visibility report slides. This data should be used as a guide only

Houston Pilots Wind Chart



Forecast Confidence

Above Normal

Below Normal

Sustained wind 13 Knots

Gusts 18 Knots

Wind from the N

Example

WS: 13
G:18
N

Time Knots	Tue 1am	Tue 2am	Tue 3am	Tue 4am	Tue 5am	Tue 6am	Tue 7am	Tue 8am	Tue 9am	Tue 10am	Tue 11am	Tue 12pm	Tue 1pm	Tue 2pm	Tue 3pm	Tue 4pm	Tue 5pm	Tue 6pm	Tue 7pm	Tue 8pm	Tue 9pm	Tue 10pm	Tue 11pm	Wed 12am	Wed 1am	Wed 2am	Wed 3am	Wed 4am	Wed 5am	Wed 6am	Wed 7am	Wed 8am	Wed 9am	Wed 10am	Wed 11am	Wed 12pm	
610 Bridge	6	6	8	8	8	9	8	7	7	7	8	8	9	9	10	11	12	12	11	10	9	8	7	6	8	8	8	9	9	9	8	8	8	8	7	6	
	15	15	17	18	18	20	19	18	17	16	17	16	17	15	15	17	18	18	18	15	13	12	11	10	10	12	13	12	13	13	13	12	12	12	12	10	10
Kinder 1	E	NNW	ENE	WNW	N	ESE	N	N	NNE	N	N	NE	WNW	N	N	N	N	N	N	N	N	NNW	NNW	NNW	NNW	NNW	NNW	NNW	NNW	NNW	NNW	NNW	NNW	NNW	NNW	NNW	
	6	7	8	7	8	9	8	7	7	7	8	9	9	9	10	11	12	11	11	10	9	8	7	6	8	8	8	9	9	9	8	8	8	8	7	7	
Greens Bayou	16	16	18	18	19	20	20	18	17	16	17	16	17	15	15	17	18	18	17	15	13	12	10	10	10	12	13	12	13	13	13	12	12	12	12	10	9
	NNE	NW	N	SSW	N	NE	N	N	NNE	N	N	SE	WNW	N	N	N	N	N	N	N	N	N	N	N	NNW	N	N	N	N	N	NNE	NNE	NNE	NNE	NNE	NNE	
Shell Crude	7	7	8	8	8	10	8	7	7	7	8	8	9	10	10	11	12	11	11	10	9	8	7	6	8	8	8	9	9	9	8	8	8	8	8	7	
	N	W	N	NE	N	N	NNE	N	N	N	N	WNW	NNW	N	N	N	N	N	N	N	N	N	N	N	N	N	N	N	N	N	NNE	NNE	NNE	NNE	NNE	NNE	
Lynchburg Ferries	7	7	8	8	8	10	9	7	8	8	8	8	9	10	11	12	13	12	12	10	9	8	7	7	8	8	8	9	9	9	8	8	8	8	9	8	7
	17	15	18	19	18	20	20	18	17	17	17	16	16	16	16	17	18	18	17	15	14	12	10	10	10	11	12	12	13	13	13	12	12	12	11	10	9
Exxon 3	N	N	N	N	N	SSE	NNE	NNE	N	N	N	SW	N	N	N	N	N	N	N	N	NNW	NW	W	W	NNW	N	N	N	N	N	N	NNE	NNE	NNE	NNE	NNE	NNE
	7	7	8	8	8	9	9	8	8	8	8	8	9	10	11	13	14	13	12	12	11	10	9	8	9	9	10	10	10	10	9	9	9	9	8	8	
Morgans Point	18	16	18	18	18	20	21	19	18	17	17	17	16	16	16	17	18	18	17	16	15	14	12	11	10	12	13	13	14	14	13	13	12	12	10	10	
	N	N	N	ENE	NNE	SSW	NNE	ENE	N	N	NNE	WSW	N	N	N	N	N	N	N	N	NW	SSW	SSE	SSE	NW	NNE	N	N	N	N	NNE	NNE	NNE	NNE	NNE	NNE	
75/76	9	8	10	10	9	10	11	10	9	9	10	9	10	11	11	14	15	14	14	14	14	12	11	11	11	11	12	12	12	12	11	11	11	11	10	9	8
	19	16	19	18	18	20	21	19	18	17	17	17	18	17	16	18	19	18	18	17	17	16	14	13	13	14	15	15	16	15	14	14	13	13	11	10	
63/64	NNE	NNW	N	ESE	NE	S	N	E	N	N	ENE	N	WNW	N	N	N	N	N	N	N	SW	NE	NNE	NNE	NNE	S	N	N	N	N	NNE	NNE	NNE	NNE	NNE	NNE	
	15	13	15	14	14	15	16	15	14	13	14	13	14	13	14	16	18	18	18	18	18	17	16	15	15	16	16	16	17	16	16	15	15	14	11	9	
51/52	20	18	20	19	19	20	22	20	19	18	18	19	19	18	17	19	20	20	20	20	20	19	18	17	17	17	19	19	19	19	19	18	17	16	15	13	11
	NNE	SSW	N	NNE	N	ESE	N	N	N	NNE	WNW	SSE	N	N	N	N	N	N	N	N	NNW	NE	N	N	N	N	N	N	N	N	NNE	NNE	NNE	NNE	NNE	NNE	
37/38	18	17	19	18	18	19	20	19	18	16	17	17	16	16	16	17	18	20	21	21	21	20	19	18	19	19	19	20	20	20	19	19	17	16	13	11	
	19	18	20	20	20	22	20	19	18	20	20	19	18	20	19	18	20	21	23	23	23	23	21	21	19	20	21	22	22	22	22	21	20	19	17	14	12
25/26	NNE	N	N	N	N	N	NNE	NNE	NNE	N	NNE	NNE	N	N	N	N	N	N	N	N	N	N	N	N	NNE	NNE	NNE	NNE	NNE	NNE	NNE	NNE	NNE	NNE	NNE	NNE	NNE
	17	18	18	19	19	19	20	19	18	17	17	18	17	17	16	17	18	19	20	21	21	20	20	19	18	19	19	19	19	19	19	19	18	16	13	11	
11/12	19	19	20	21	21	22	20	20	19	19	19	19	20	19	19	18	19	20	21	22	23	23	22	22	20	20	21	22	22	22	21	21	20	19	18	14	13
	NNE	NNE	N	NNE	NNE	NNE	NNE	NNE	NNE	NNE	N	NNE	NNE	NW	N	N	N	N	N	N	N	N	N	NNE	NNE	NNE	NNE	NNE	NNE	NNE	NNE	NNE	NNE	NNE	NNE	NNE	
1 & 2 Bravo	16	17	17	18	19	18	18	17	16	16	16	16	16	16	16	16	17	18	19	20	20	19	19	17	17	18	18	18	18	17	17	16	15	12	11		
	19	20	20	21	22	21	21	20	20	19	19	19	19	19	18	18	18	19	20	21	21	22	21	20	19	19	20	20	20	19	19	19	18	17	14	13	
	NNE	NNE	N	NNE	NNE	NNE	NNE	NNE	NNE	NNE	N	N	ESE	N	N	N	SSE	N	N	N	N	N	N	NNE	NNE	NNE	NNE	NNE	NNE	NNE	NNE	NNE	NNE	NNE	NNE	NNE	
	20	19	20	19	21	21	21	19	19	19	17	18	17	17	17	18	18	20	21	22	22	23	22	22	21	21	22	22	22	22	22	21	20	18	15	13	
	21	21	21	20	22	22	22	21	20	20	20	20	20	20	19	19	20	22	23	24	24	25	24	24	23	23	23	24	24	24	24	23	21	20	16	14	
	NNE	NNE	N	N	NNE	NNE	NNE	NNE	NNE	NNE	N	N	N	SSE	N	N	N	N	N	N	N	N	N	NNE	NNE	NNE	NNE	NNE	NNE	NNE	NNE	NNE	NNE	NNE	NNE	NNE	

NOTE: This is automated data that may/ may not agree with the official BAM thinking that's found on the daily slides.
This data should be used as a guide only

Houston Pilots: Tues. 10/31/2023

Forecast Discussion

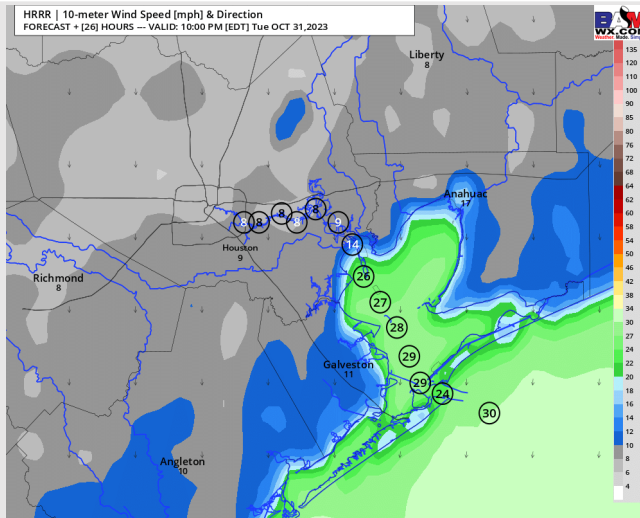
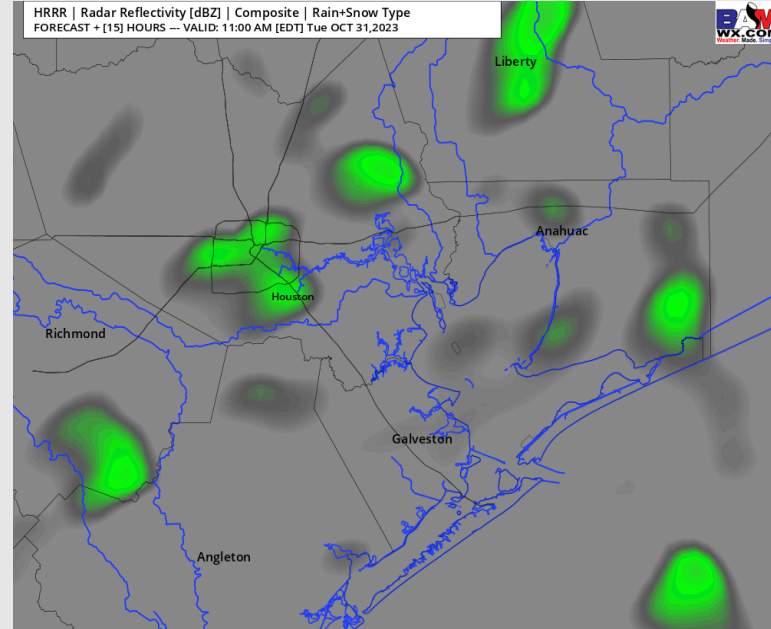
Precip: On and off light showers/drizzle will be likely through the AM with coverage gradually tapering down in the late AM to early PM. Dry conditions expected after 4 PM. Intensity is expected to remain light in nature.

Wind: Winds will be sustained from the N and will remain elevated beyond the cold front passage. Winds **N of Morgan's Point** will be at 9 - 14 kts throughout majority of the day before decreasing to 5 - 10 kts after 8 PM. Winds **S of Morgan's Point** will be at 20 - 25 kts through the AM with **gusts near 30 knots**. Towards 7 PM, winds will uptick to 23 - 27 kts. Winds will not start a weakening trend until early WED AM. **Gusts near 30 knots will continue to be possible.**

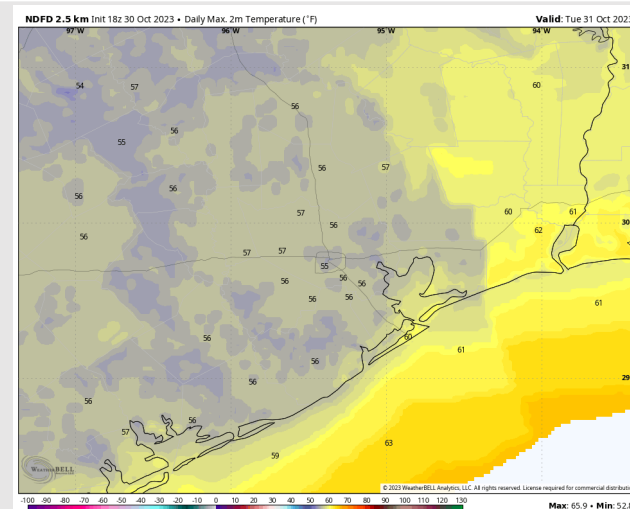
High Temps: **N of Morgan's Point:** High 50's F. **S of Morgan's Point:** Low 60s F.

Visibility: Not anticipating any visibility issues currently.

Precip Image: 10 AM CT



Wind Speed:
9 PM CT



High Temps
Today

Houston Pilots: Wed. 11/1/2023

Forecast Discussion

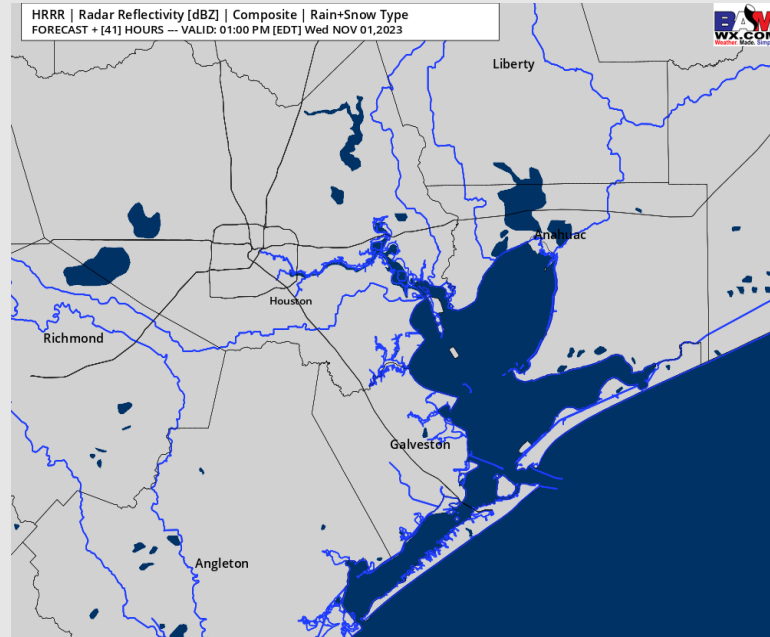
Precip: Favoring dry conditions for Wednesday.

Wind: Winds out of the N will gradually shift out of the N/NE by 12 PM. For Stations **N of Morgan's Point** winds will increase begin the day at 3-8 kts, calming to 2 - 6 kts after 12 PM. For stations **S of Morgan's Point** winds will begin to weaken at 20 - 25 kts 10 AM (wind gusts to near 25-28 knots still possible). After 10 AM, winds will begin to gradually decrease to 7-12 kts by 2 PM.

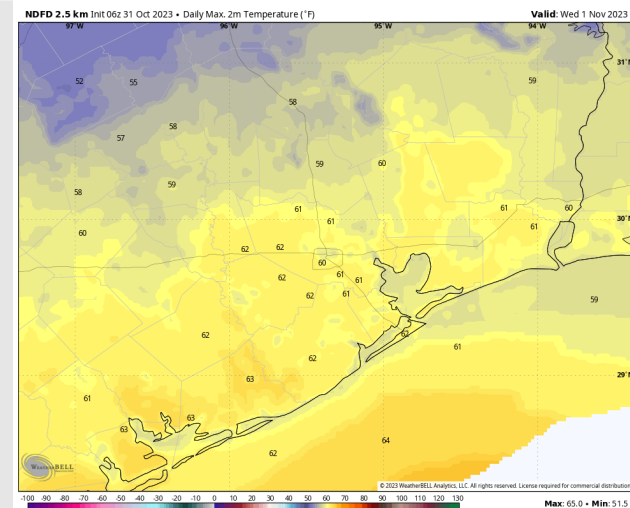
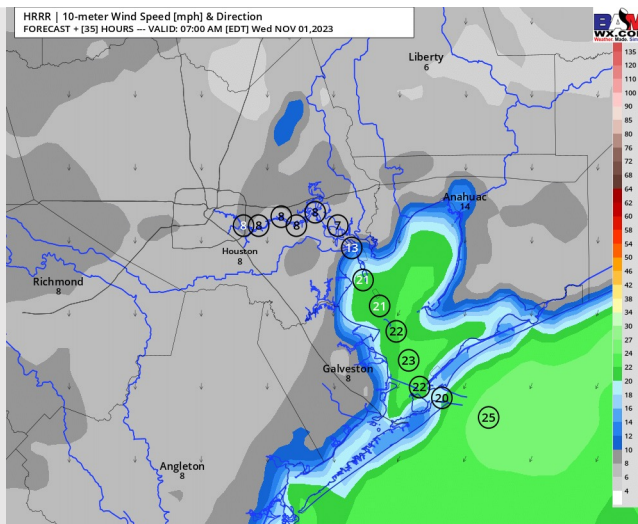
High Temps: **N of Morgan's Point:** Low 60's F. **S of Morgan's Point:** Low 60s F

Visibility: Not anticipating any visibility issues at this time.

Precip Image: 12 PM CT



Wind Speed:
6 AM CT



High Temps
Wednesday

Houston Pilots: Thu. 11/2/2023

Forecast Discussion

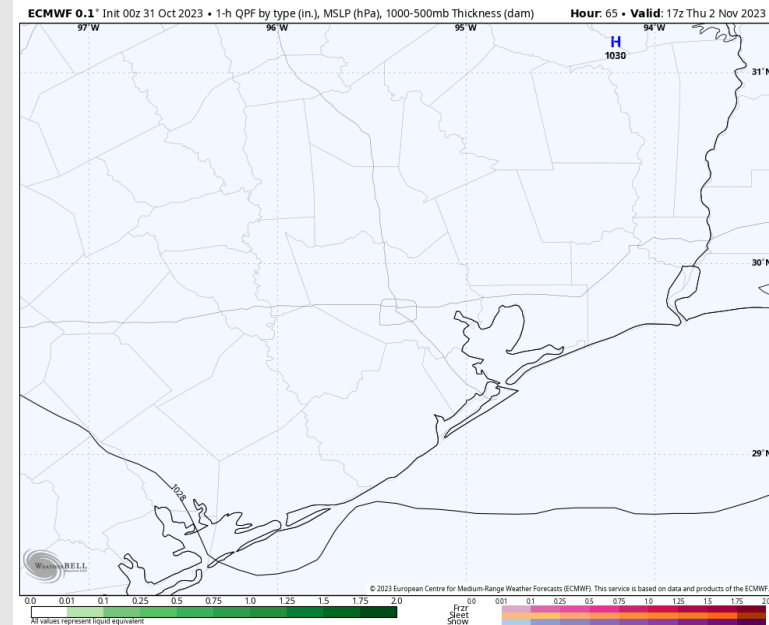
Precip: Favoring dry conditions for Thursday.

Wind: Winds will be out of the NE through 1 PM before shifting to out of the E/SE the rest of the day Thursday. Winds **N of Morgan's Point** will be at 2 – 7 kts the entire day. **S of Morgan's Point** will be at 7 – 12 kts through 1 PM before slightly decreasing to 5-10 kts.

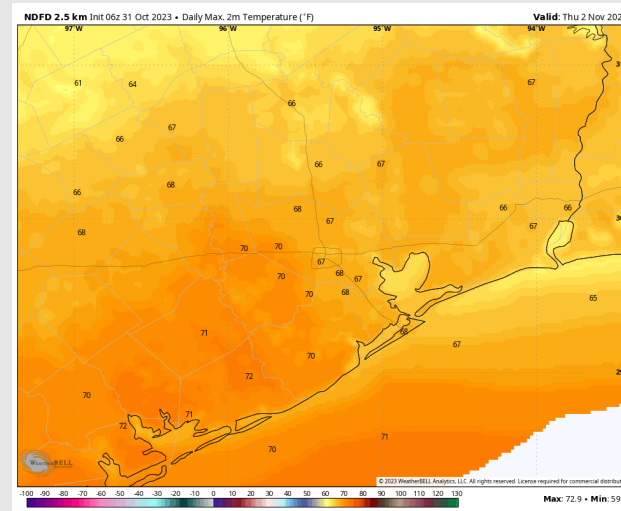
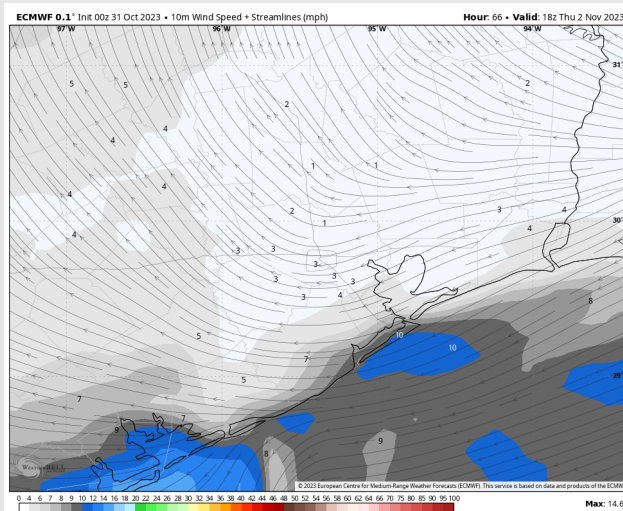
High Temps THU: **N of Morgan's Point:** Upper 60s F. **S of Morgan's Point:** Upper 60s F.

Visibility: No visibility concerns for Thursday.

Precip Image: 7 PM CT

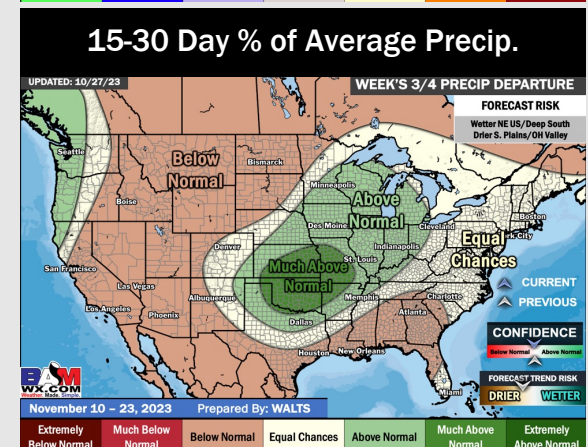
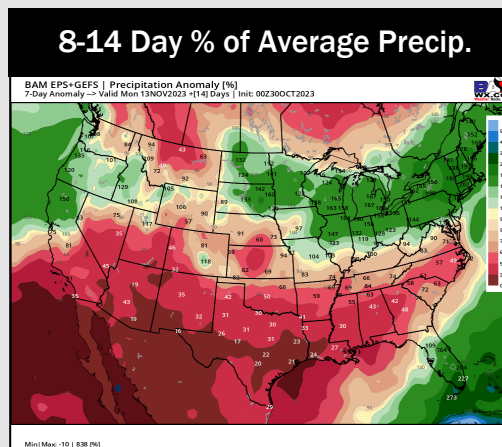
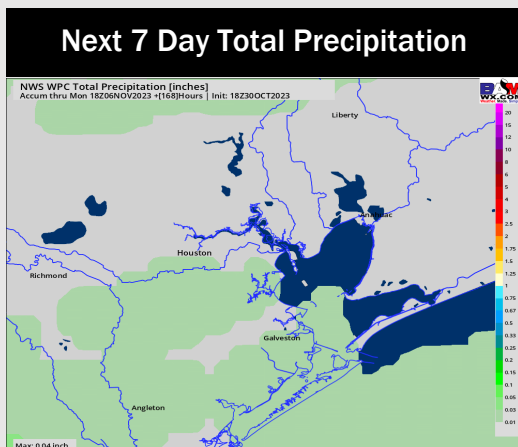
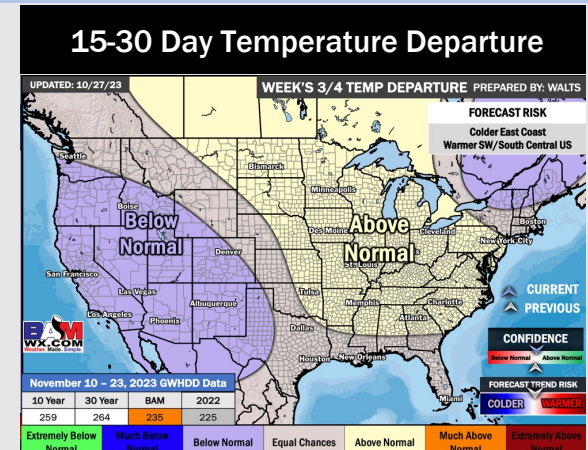
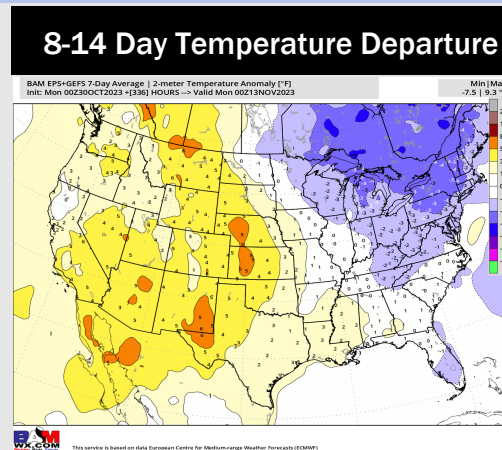
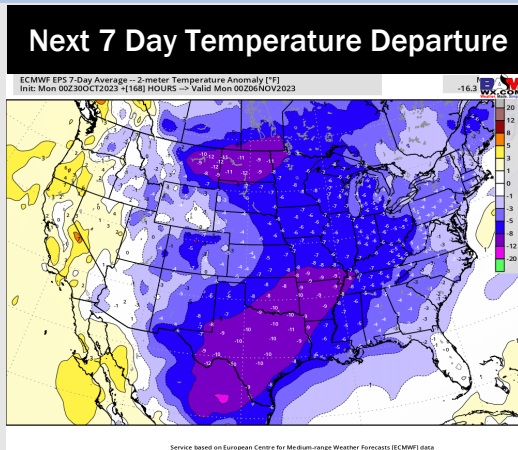


Wind Speed
1 PM CT



High Temps
Thursday

Houston Pilots: 10/31/23



- High pressure settles in behind this current cold front keeping drier conditions after today with minor chances into the weekend. Temperatures will remain below normal with warmer temperatures returning into the weekend.
- Below normal rainfall and seasonal to slightly above normal temperatures are expected into the week 2 timeframe.
- Seasonal temperatures and below normal chances for precipitation are favored in the weeks ³/₄ timeframe.