

Houston Pilots Forecast Package



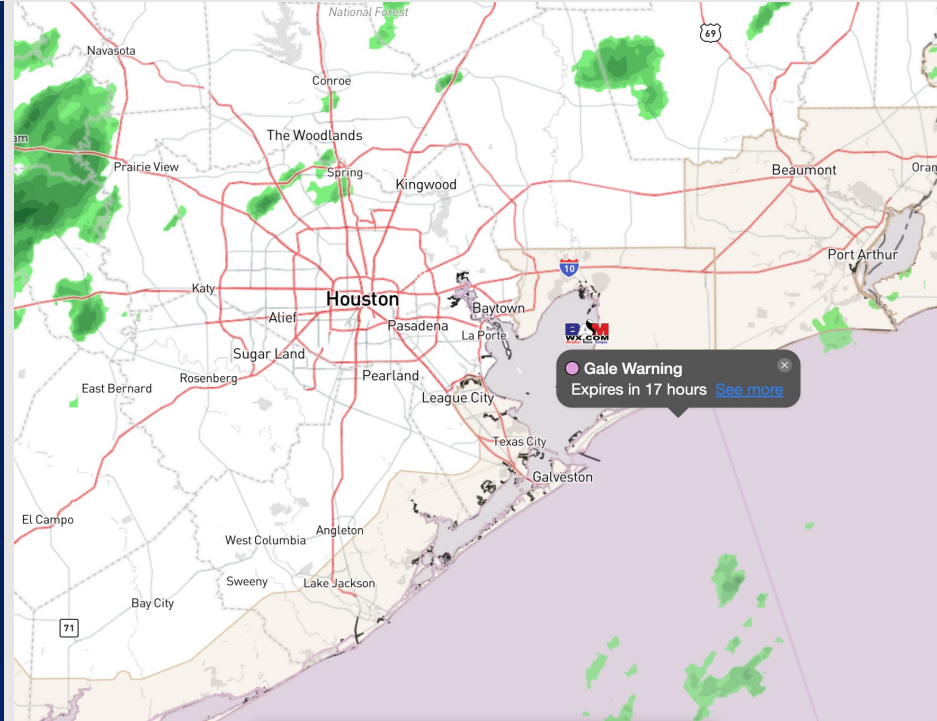
Updated: 2:20 PM CT

Monday, October 30, 2023

Forecaster: Will Danby

Weather Headlines

- **With increased wind heights, increased wave heights of 3 - 6ft will be possible starting late this evening into early WED AM. Check out the slide below for thinking on timing with wave height impacts.**
- **Light precipitation chances through tomorrow AM.**
- **Passing of cold front will usher in some colder temperatures this week.**
- **Elevated winds anticipated this afternoon and TUE as a result. Check slides below for more info.**
- **No visibility concerns the next few days.**



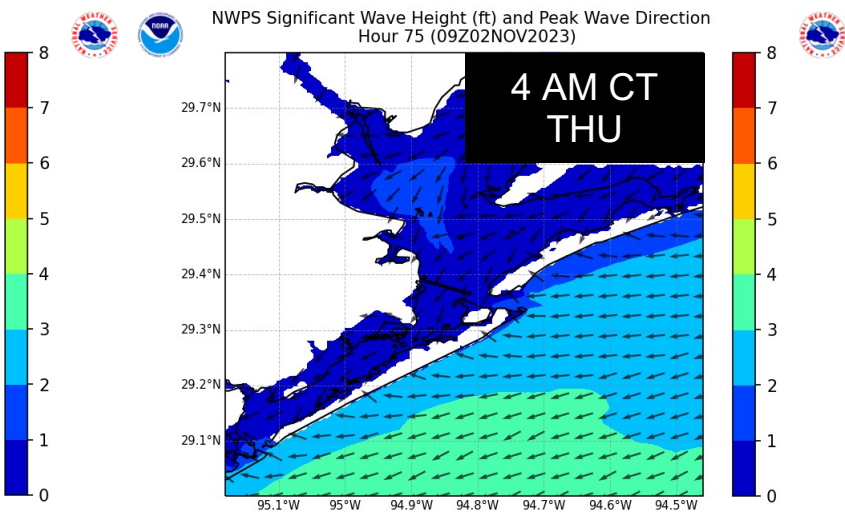
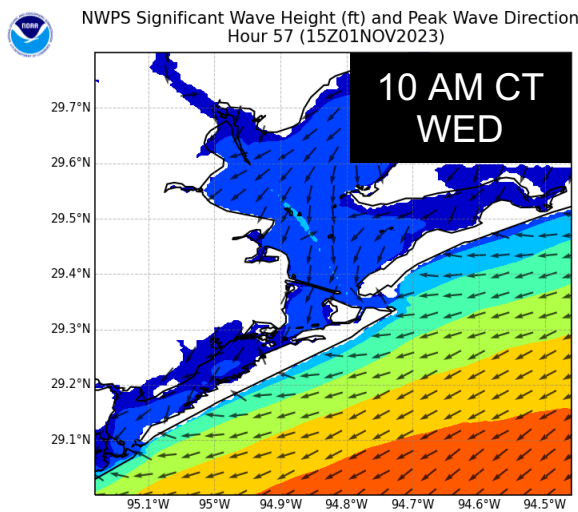
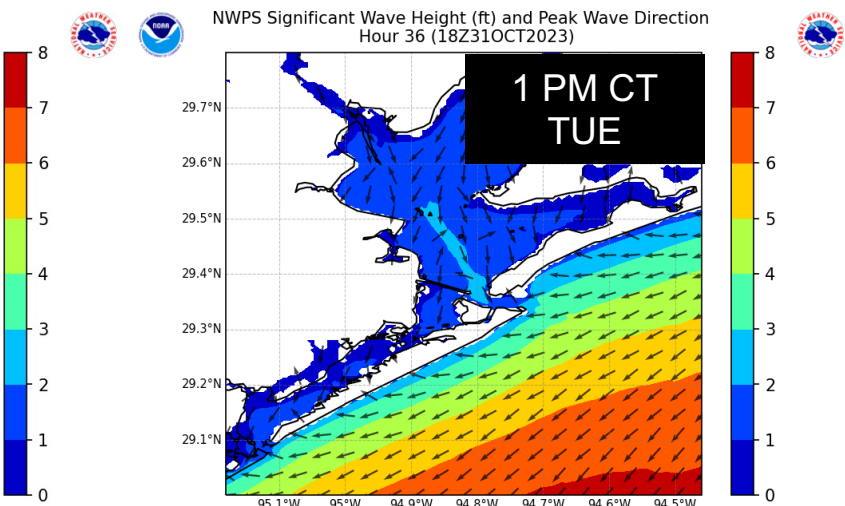
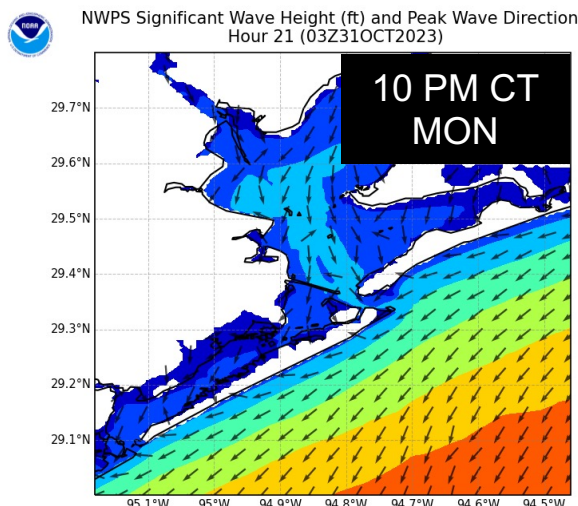
Radar/NWS Alerts: 2:16 PM CT



As always, please do not hesitate to reach out to us with any forecast questions via the chat option on the Weather Porthole or our on-call number, **(317)-560-8122** press **1** for forecast questions.

Houston Pilots Wave Update

Significant Wave Height 4-Panel



Elevated winds out of the NW will bring in the potential for low water levels and increased wave heights.

3 to locally 6-foot waves will be possible late tonight (10 PM) into tomorrow early WED AM (10 AM). As winds weaken into WED, waves will subside.

This threat is mainly for the boarding station with increased wave heights off further offshore.

Houston Pilots Visibility Chart (miles)



Time	Mon 1pm	Mon 2pm	Mon 3pm	Mon 4pm	Mon 5pm	Mon 6pm	Mon 7pm	Mon 8pm	Mon 9pm	Mon 10pm	Mon 11pm	Tue 12am	Tue 1am	Tue 2am	Tue 3am	Tue 4am	Tue 5am	Tue 6am	Tue 7am	Tue 8am	Tue 9am	Tue 10am	Tue 11am	Tue 12pm	Tue 1pm	Tue 2pm	Tue 3pm	Tue 4pm	Tue 5pm	Tue 6pm	Tue 7pm	Tue 8pm	Tue 9pm	Tue 10pm	Tue 11pm	Wed 12am		
610 Bridge	7	9	10	10	10	10	10	10	10	10	10	10	10	10	10	10	10	10	10	10	10	10	10	10	10	10	10	10	10	10	10	10	10	10	10	10	10	10
Kinder 1	7	9	10	10	10	10	10	10	10	10	10	10	10	10	10	10	10	10	10	10	10	10	10	10	10	10	10	10	10	10	10	10	10	10	10	10	10	10
Greens Bayou	7	9	10	10	10	10	10	10	10	10	10	10	10	10	10	10	10	10	10	10	10	10	10	10	10	10	10	10	10	10	10	10	10	10	10	10	10	10
Shell Crude	7	9	10	10	10	10	10	10	10	10	10	10	10	10	10	10	10	10	10	10	10	10	10	10	10	10	10	10	10	10	10	10	10	10	10	10	10	10
Lynchburg Ferries	7	9	10	10	10	10	10	10	10	10	10	10	10	10	10	10	10	10	10	10	10	10	10	10	10	10	10	10	10	10	10	10	10	10	10	10	10	10
Exxon 3	7	9	10	10	10	10	10	10	10	10	10	10	10	10	10	10	10	10	10	10	10	10	10	10	10	10	10	10	10	10	10	10	10	10	10	10	10	10
Morgans Point	7	9	10	10	10	10	10	10	10	10	10	10	10	10	10	10	10	10	10	10	10	10	10	10	10	10	10	10	10	10	10	10	10	10	10	10	10	10
75/76	7	9	10	10	10	10	10	10	10	10	10	10	10	10	10	10	10	10	10	10	10	10	10	10	10	10	10	10	10	10	10	10	10	10	10	10	10	10
63/64	7	9	10	10	10	10	10	10	10	10	10	10	10	10	10	10	10	10	10	10	10	10	10	10	10	10	10	10	10	10	10	10	10	10	10	10	10	10
51/52	8	9	10	10	10	10	10	10	10	10	10	10	10	10	10	10	10	10	10	10	10	10	10	10	10	10	10	10	10	10	10	10	10	10	10	10	10	10
37/38	10	9	10	10	10	10	10	10	10	10	10	10	10	10	10	10	10	10	10	10	10	10	10	10	10	10	10	10	10	10	10	10	10	10	10	10	10	10
25/26	10	9	10	10	10	10	10	10	10	10	10	10	10	10	10	10	10	10	10	10	10	10	10	10	10	10	10	10	10	10	10	10	10	10	10	10	10	10
11/12	10	9	10	10	10	10	10	10	10	10	10	10	10	10	10	10	10	10	10	10	10	10	10	10	10	10	10	10	10	10	10	10	10	10	10	10	10	10
1 & 2 Bravo	6	6	6	6	7	8	10	10	10	10	10	10	10	10	10	10	10	10	10	10	10	10	10	10	10	10	10	10	10	10	10	10	10	10	10	10	10	10

NOTE: This is automated data that may/may not agree with the official BAM thinking that's found on the daily slides or special visibility report slides. This data should be used as a guide only

Houston Pilots Wind Chart



Forecast Confidence



Example

Sustained wind 13 Knots
Gusts 18 Knots
Wind from the N

WS: 13
G:18
N

Time Knots	Mon 1pm	Mon 2pm	Mon 3pm	Mon 4pm	Mon 5pm	Mon 6pm	Mon 7pm	Mon 8pm	Mon 9pm	Mon 10pm	Mon 11pm	Tue 12am	Tue 1am	Tue 2am	Tue 3am	Tue 4am	Tue 5am	Tue 6am	Tue 7am	Tue 8am	Tue 9am	Tue 10am	Tue 11am	Tue 12pm	Tue 1pm	Tue 2pm	Tue 3pm	Tue 4pm	Tue 5pm	Tue 6pm	Tue 7pm	Tue 8pm	Tue 9pm	Tue 10pm	Tue 11pm	Tue 12am	Wed
610 Bridge	10 18 N	10 17 N	10 18 N	10 18 N	9 18 ENE	9 18 SSE	9 18 SE	9 18 SE	8 18 ESE	8 18 ENE	7 17 N	7 17 N	7 18 ENE	7 18 SE	6 17 N	10 15 N	10 16 N	10 15 N	10 16 N	11 16 N	10 16 N	11 17 SSW	11 17 ENE	11 17 ESE	12 17 W	12 18 N	11 17 N	11 17 N	12 17 N	11 16 N	9 14 N	8 12 N	8 12 N	8 12 N	8 13 N		
Kinder 1	10 19 N	10 17 N	10 18 N	10 18 N	10 18 N	9 18 E	9 19 NE	9 19 NE	8 18 NE	8 17 NE	8 18 NE	8 17 NE	8 18 NE	8 17 SE	7 16 N	10 15 N	10 16 N	10 15 N	10 16 N	11 16 N	10 16 N	11 17 SW	11 17 SE	11 17 S	12 18 SSW	11 17 N	11 17 N	11 17 N	11 16 N	10 14 N	9 12 N	8 11 N	8 12 N	7 11 N	7 12 NNW		
Greens Bayou	10 19 N	10 17 N	11 19 N	10 19 N	10 19 N	9 19 NNE	9 19 NE	9 20 N	9 19 N	8 19 N	8 17 N	8 18 N	8 18 SE	8 18 SE	7 17 N	10 14 N	10 15 N	10 16 N	10 15 N	10 16 N	10 15 N	11 16 NNW	11 17 S	11 17 WSW	11 17 SE	11 17 N	11 17 N	11 17 N	10 16 N	9 13 N	8 12 N	7 11 N	7 11 N	7 11 NNW			
Shell Crude	10 19 N	10 17 N	11 19 N	11 19 N	10 19 ENE	10 19 SSE	9 19 N	9 19 N	9 19 N	8 18 NNE	8 17 SSW	8 17 SSW	8 17 SSW	7 16 N	7 15 N	10 15 N	10 16 N	10 15 N	10 16 N	10 15 N	11 16 NNW	11 16 SW	12 17 WSW	12 17 NW	12 17 SSW	11 16 N	11 17 N	11 17 N	12 17 N	11 16 N	9 14 N	8 12 N	8 11 N	7 10 N	7 11 W		
Lynchburg Ferries	11 20 N	10 17 N	12 20 N	11 19 N	10 19 SSE	10 19 WSW	10 20 N	9 20 N	9 20 N	8 19 N	8 17 SSE	8 18 SE	8 17 NW	8 17 ESE	8 15 N	11 16 N	11 16 N	11 15 N	11 16 N	11 15 N	11 16 N	11 16 NNW	11 16 NNW	11 16 N	12 17 N	12 17 N	12 17 N	12 17 N	12 17 N	13 17 N	12 15 N	10 13 N	9 12 N	8 11 N	8 11 N		
Exxon 3	11 20 N	11 17 N	12 19 N	11 19 N	11 19 ENE	10 19 NNW	10 19 NNW	10 19 N	9 19 ESE	9 18 NNE	8 17 NNW	8 17 WSW	8 17 SSW	8 17 ESE	7 16 N	12 16 N	12 16 N	12 16 N	12 16 N	11 16 N	11 16 N	12 17 NNW	12 17 NNW	12 17 N	12 17 N	12 17 N	13 17 N	13 16 N	13 16 N	12 16 N	10 14 N	10 13 N	9 12 N	8 11 N	9 12 N		
Morgans Point	13 20 N	12 18 N	13 20 N	13 20 N	12 20 N	12 19 WNW	12 19 NNW	12 19 NNE	11 19 S	10 19 NNE	10 18 N	9 17 WSW	9 17 SSW	9 18 N	9 18 S	13 17 N	14 17 N	14 17 N	13 17 N	13 17 N	14 17 N	13 17 SSW	13 17 W	13 17 S	13 17 WNW	13 17 N	14 18 N	14 18 N	15 18 N	14 18 N	13 17 N	13 16 N	12 15 NNW	11 14 NNW	11 14 NNW	11 14 WSW	
75/76	17 21 N	16 20 N	17 20 NNW	18 21 N	17 21 NNE	16 20 ESE	17 20 SW	17 20 ENE	15 20 ESE	16 20 N	14 19 E	14 18 ENE	15 19 WNW	14 18 S	18 20 SSW	18 20 WNW	18 20 ESE	18 20 ENE	18 19 ENE	17 19 ESE	17 19 ENE	16 20 ENE	16 20 ENE	16 20 SSE	15 19 W	15 19 N	16 20 N	16 20 N	18 20 N	17 19 N	17 19 N	17 19 N	16 18 S	16 17 SE	16 18 SSE	16 18 NE	
63/64	19 22 N	18 20 N	19 20 N	20 22 N	19 22 N	19 22 N	19 22 N	19 21 S	18 20 NNE	18 20 N	17 19 N	17 19 N	17 19 WNW	16 18 NE	17 20 ENE	20 23 N	20 23 N	20 23 N	20 23 N	20 22 N	20 22 N	20 22 N	20 22 N	20 22 N	20 22 N	19 21 ENE	19 21 N	19 21 N	20 21 N	20 21 N	20 21 N	20 21 N	20 21 N	20 21 N	20 21 N	20 21 N	
51/52	20 23 N	19 20 N	20 21 NW	20 22 NNE	21 22 N	20 22 E	19 21 NNE	19 21 N	19 21 N	18 20 NNE	18 19 NNE	18 19 SSW	18 20 N	21 23 N	21 23 N	22 23 N	22 23 N	22 23 N	22 23 N	22 23 N	22 23 N	22 23 N	22 23 N	22 23 N	20 22 NNE	19 21 N	19 21 N	19 21 N	18 20 N	19 21 N	20 22 N	20 22 N	20 22 N	20 22 N	20 22 N	20 22 N	
37/38	21 23 N	19 22 N	20 22 SW	20 22 E	21 22 NNE	20 22 ENE	19 21 ENE	19 21 N	19 21 N	18 20 NNE	18 20 NNE	18 20 NNE	18 20 NNE	18 20 N	18 20 N	21 23 N	21 23 N	21 23 N	21 23 N	21 23 N	21 23 N	21 23 N	21 23 N	21 23 N	21 23 N	21 23 N	21 23 N	21 23 N	21 23 N	21 23 N	21 23 N	21 23 N	21 23 N	21 23 N	21 23 N	21 23 N	
25/26	19 22 S	18 21 N	19 22 SSE	19 22 E	19 22 N	18 21 N	18 20 NNE	18 20 NNE	18 20 NNE	17 20 NNE	17 19 NNE	16 18 NNE	16 18 NNE	15 18 NNE	15 18 N	18 20 N	19 21 N	19 21 N	19 21 N	19 21 N	20 22 N	20 22 N	20 22 N	20 22 N	20 22 N	20 22 N	19 21 N	19 21 N	18 20 SSE	17 20 ESE	17 20 ESE	17 20 ESE	17 20 ESE	17 20 ESE	17 20 ESE	17 20 ESE	17 20 ESE
11/12	18 21 ENE	17 20 N	18 21 NNE	18 21 N	18 21 N	17 20 N	17 20 N	17 20 N	17 20 N	17 20 N	17 20 N	16 20 N	16 20 N	15 18 N	15 18 N	18 21 N	19 21 N	19 21 N	19 21 N	20 22 N	20 22 N	20 22 N	20 22 N	20 22 N	20 22 N	20 22 N	20 22 N	20 22 N	20 22 N	20 22 N	20 22 N	20 22 N	20 22 N	20 22 N	20 22 N	20 22 N	20 22 NNE
1 & 2 Bravo	20 21 NNE	19 20 N	20 20 NNW	20 21 N	20 21 N	20 21 N	20 21 N	20 21 N	20 21 N	20 21 N	20 21 N	20 21 N	20 21 N	20 21 N	20 21 N	22 23 N	23 24 N	23 24 N	23 24 N	23 24 N	23 24 N	23 24 N	23 24 N	23 24 N	23 24 N	21 22 N	19 20 SSW	19 20 N	19 21 SSW	21 22 NNE	21 22 N	22 23 N	22 23 N	22 23 N	22 23 N	22 23 N	22 23 N

NOTE: This is automated data that may/may not agree with the official BAM thinking that's found on the daily slides.
This data should be used as a guide only

Houston Pilots: Mon. 10/30/2023



Forecast Discussion

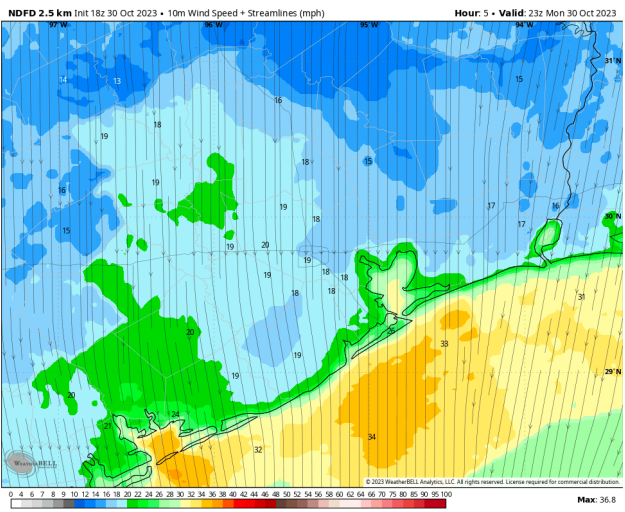
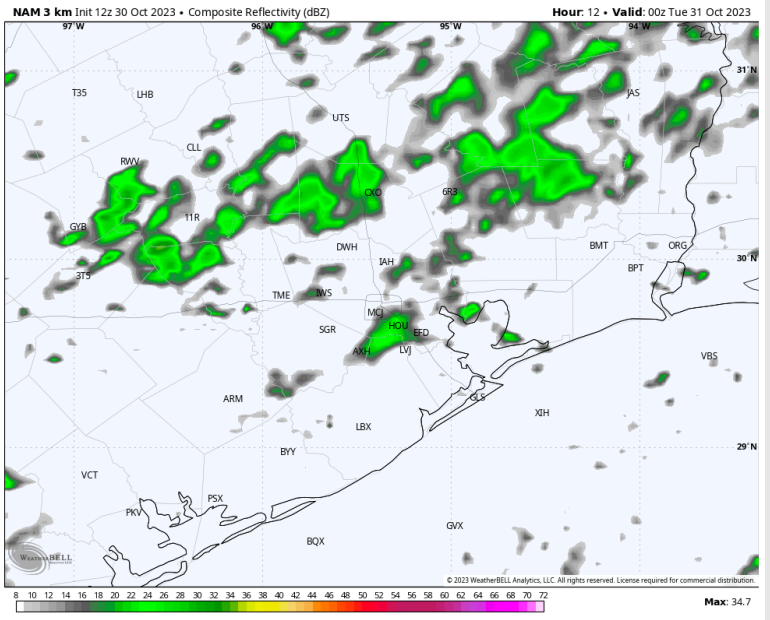
Precip: Isolated pockets of drizzle anticipated to continue throughout the afternoon. Better coverage of light showers will remain to the north of the bay area. Intensity will remain light with more dry time than wet.

Wind: Winds will be out of the N for the afternoon hours via the cold front passage. Winds **N of Morgan's Point** will be at 12 - 17 kts with gusts of up to 20 - 22 kts. **S of Morgan's Point** will be at 21-28 kts today. **Elevated wind gusts of 27-33 kts will be possible S of Morgan's Point for the remaining afternoon hours.**

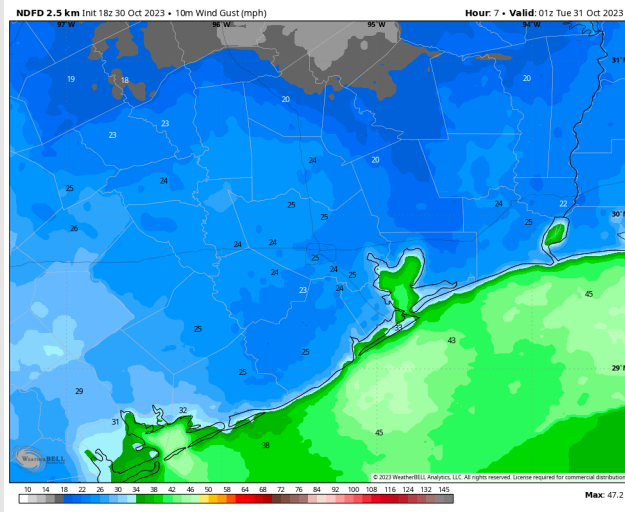
Low Temps TUE AM: **N of Morgan's Point:** Mid 40s F. **S of Morgan's Point:** Upper 40s F.

Visibility: No visibility concerns for today.

Precip Image: 7 PM CT



Wind Speed
6 PM CT



Peak Wind
Gusts - 8 PM CT

Forecast Discussion

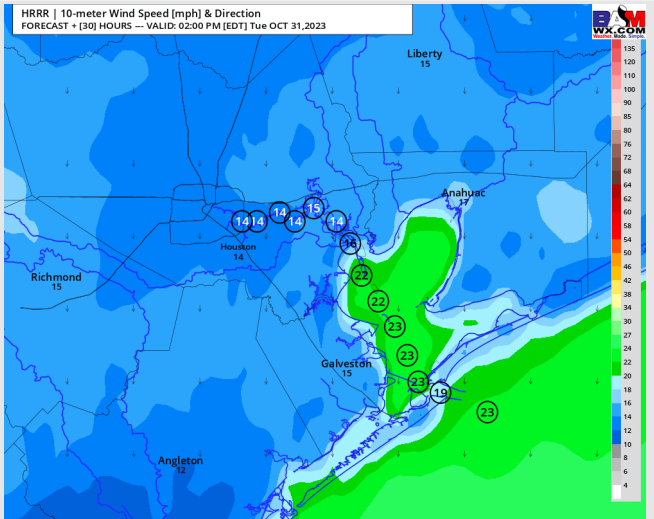
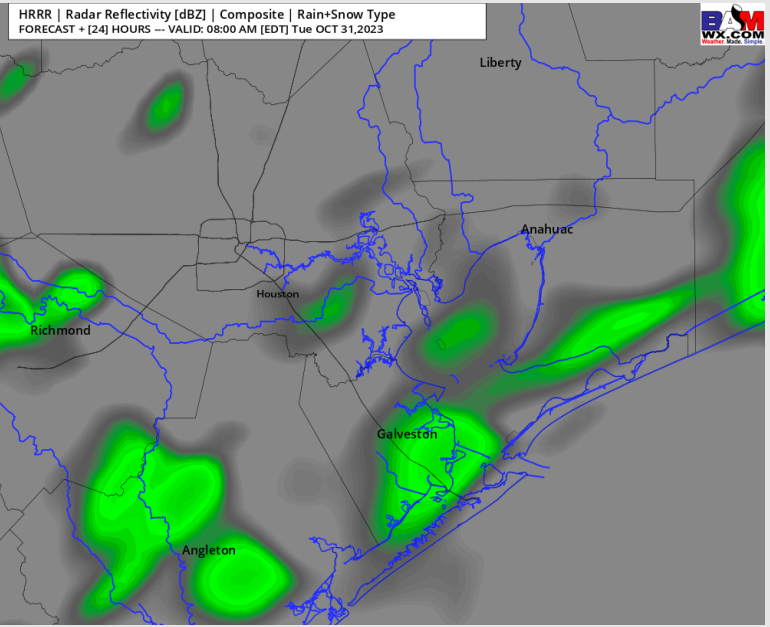
Precip: On and off light showers/drizzle will be likely through the AM with coverage gradually tapering down in the late AM to early PM. Dry conditions expected after 1 PM. Intensity is expected to remain light in nature.

Wind: Winds will be sustained from the N and will remain elevated beyond the cold front passage. Winds **N of Morgan's Point** will be at 8 - 13 kts throughout majority of the day before decreasing to 5 - 10 kts after 7 PM. Winds **S of Morgan's Point** will be at 20 -25 kts through the AM with gusts near 30 knots. Towards 7 PM, winds at the Boarding Station will uptick to 23 - 27 kts. Winds will not start a weakening trend until early WED AM. Gusts near 30 knots will continue to be possible.

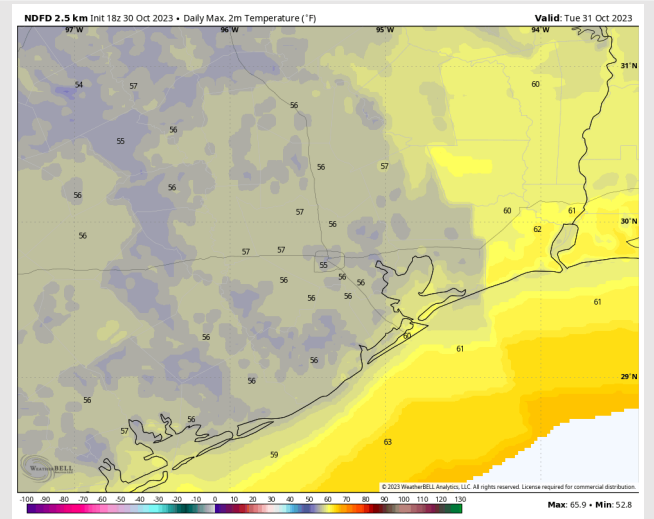
High Temps: Notably cooler. **N of Morgan's Point:** Mid 50's F. **S of Morgan's Point:** Low 60s F.

Visibility: Not anticipating any visibility issues currently.

Precip Image: 7 AM CT



Wind Speed:
1 PM CT



High Temps
Tuesday

Forecast Discussion

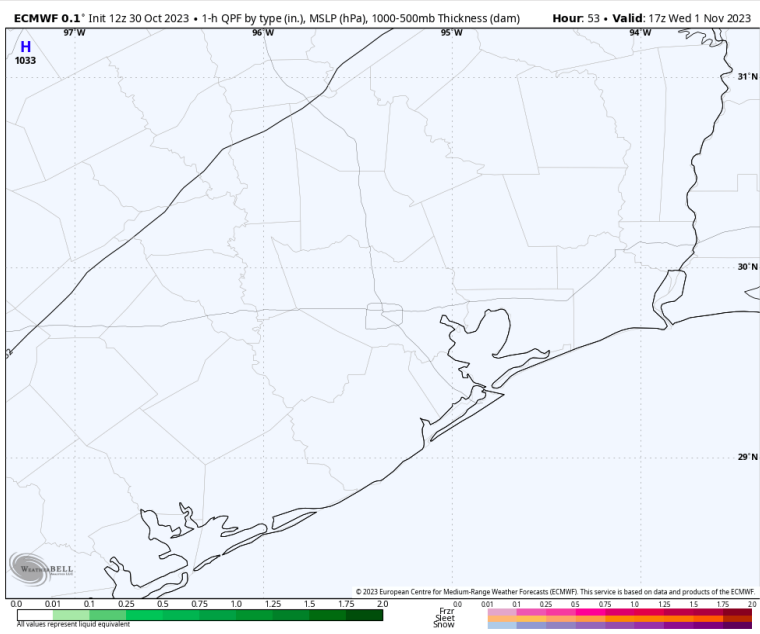
Precip: Favoring dry conditions for Wednesday.

Wind: Winds out of the N will gradually shift out of the NE by 6 PM. For Stations **N of Morgan's Point** winds will increase begin the day at 3-8 kts, calming to 2 - 6 kts after 12 PM. For stations **S of Morgan's Point** winds will begin to weaken at 17-23 kts for the AM hours (wind gusts to near 26 knots still possible). After 10 AM, winds will begin to gradually decrease to 7-12 kts.

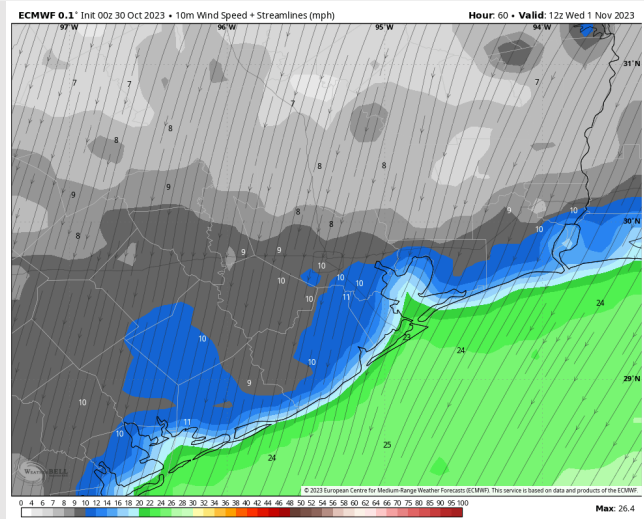
High Temps: **N of Morgan's Point:** Low 60's F. **S of Morgan's Point:** Low 60s F

Visibility: Not anticipating any visibility issues at this time.

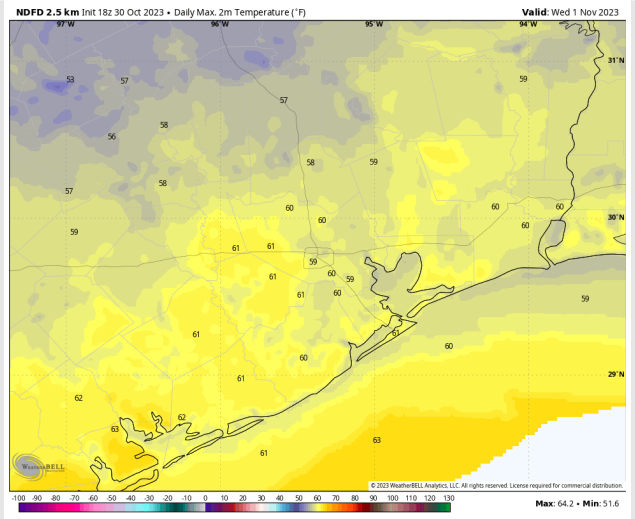
Precip Image: 12 PM CT



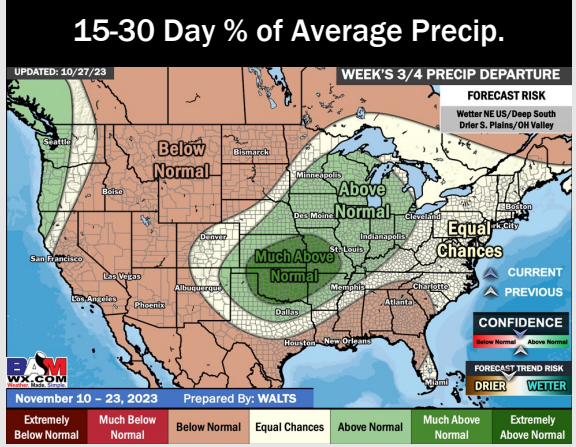
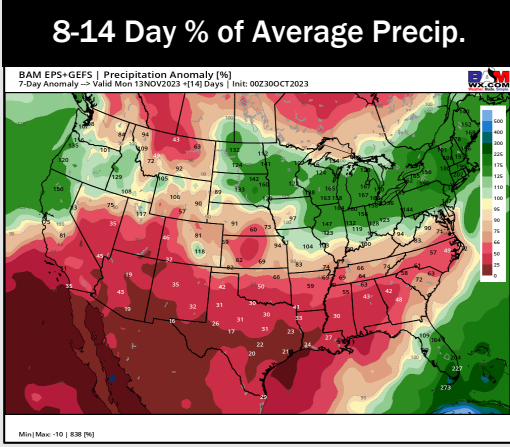
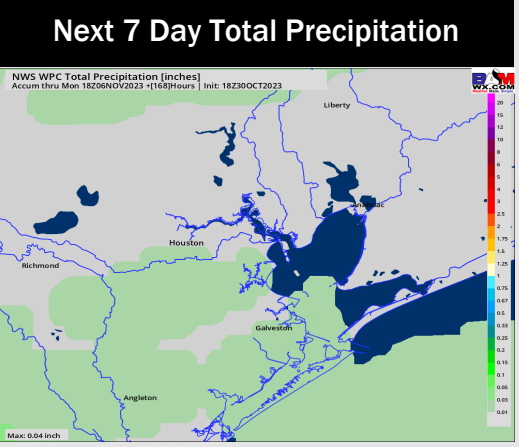
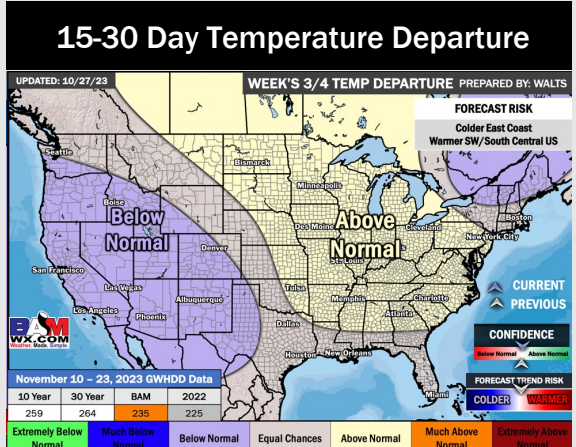
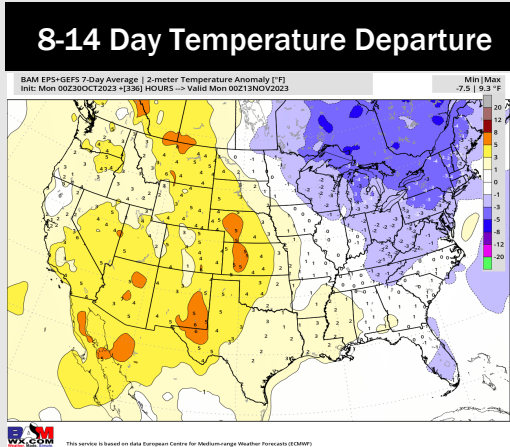
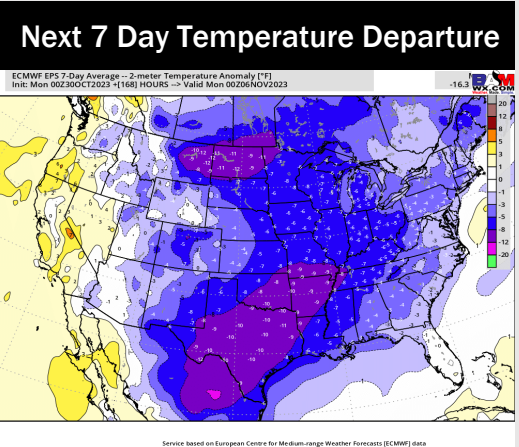
Wind Speed:
7 AM CT



High Temps
Wednesday



Houston Pilots: 10/30/23



- High pressure settles in behind this cold front keeping quiet conditions with minor chances into the weekend. Temperatures will remain below normal with warmer temperatures returning into the weekend.
- Below normal rainfall and seasonal to slightly above normal temperatures are expected into the week 2 timeframe.
- Seasonal temperatures and below normal chances for precipitation are favored in the weeks 3/4 timeframe.