

# Houston Pilots Forecast Package



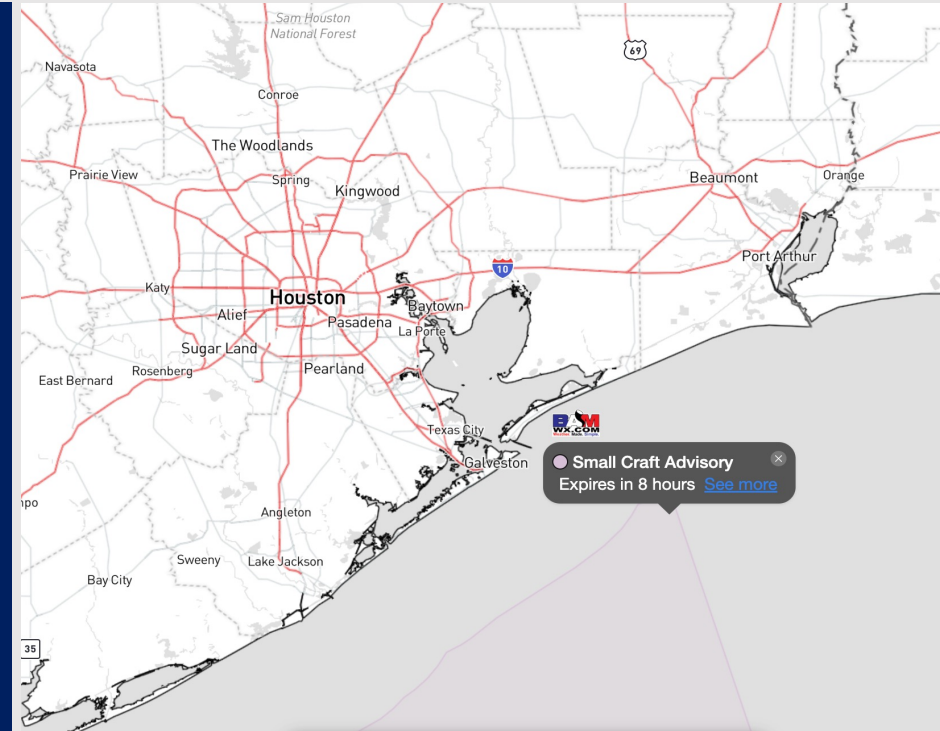
Updated: 4:35 AM CT

Tuesday, October 24, 2023

Forecaster: Will Danby

## Weather Headlines

- Although minor rain chances around over the next couple of days, the next best shot of rain will be when a cold front arrives early afternoon Thursday.
- Wind speeds will generally be highest in the forecast during peak daytime heating at around **12 - 18 kts** consistently. Check wind analysis for more details.
- **Periods of Gusty Winds of 20-27kts will allow for choppy bay waters and increased wave heights today (especially for Boarding Station). Favoring wave heights to be in the 4 - 5 ft range. See slide 4 for details.**



**Radar/NWS Alerts: 4:30 AM CT**



As always, please do not hesitate to reach out to us with any forecast questions via the chat option on the Weather Porthole or our on-call number, **(317)-560-8122** press **1** for forecast questions.

# Houston Pilots Visibility Chart (miles)



Time	Tue 3am	Tue 4am	Tue 5am	Tue 6am	Tue 7am	Tue 8am	Tue 9am	Tue 10am	Tue 11am	Tue 12pm	Tue 1pm	Tue 2pm	Tue 3pm	Tue 4pm	Tue 5pm	Tue 6pm	Tue 7pm	Tue 8pm	Tue 9pm	Tue 10pm	Tue 11pm	Wed 12am	Wed 1am	Wed 2am	Wed 3am	Wed 4am	Wed 5am	Wed 6am	Wed 7am	Wed 8am	Wed 9am	Wed 10am	Wed 11am	Wed 12pm	Wed 1pm	Wed 2pm	
<b>610 Bridge</b>	10	10	10	10	10	10	10	10	10	10	10	10	10	10	10	10	10	10	10	10	10	10	10	10	10	10	10	10	10	10	10	10	10	10	10	10	10
<b>Kinder 1</b>	10	10	10	10	10	10	10	10	10	10	10	10	10	10	10	10	10	10	10	10	10	10	10	10	10	10	10	10	10	10	10	10	10	10	10	10	10
<b>Greens Bayou</b>	10	10	10	10	10	10	10	10	10	10	10	10	10	10	10	10	10	10	10	10	10	10	10	10	10	10	10	10	10	10	10	10	10	10	10	10	10
<b>Shell Crude</b>	10	10	10	10	10	10	10	10	10	10	10	10	10	10	10	10	10	10	10	10	10	10	10	10	10	10	10	10	10	10	10	10	10	10	10	10	10
<b>Lynchburg Ferries</b>	10	10	10	10	10	10	10	10	10	10	10	10	10	10	10	10	10	10	10	10	10	10	10	10	10	10	10	10	10	10	10	10	10	10	10	10	10
<b>Exxon 3</b>	10	10	10	10	10	10	10	10	10	10	10	10	10	10	10	10	10	10	10	10	10	10	10	10	10	10	10	10	10	10	10	10	10	10	10	10	10
<b>Morgans Point</b>	10	10	10	10	10	10	10	10	10	10	10	10	10	10	10	10	10	10	10	10	10	10	10	10	10	10	10	10	10	10	10	10	10	10	10	10	10
<b>75/76</b>	10	10	10	10	10	10	10	10	10	10	10	10	10	10	10	10	10	10	10	10	10	10	10	10	10	10	10	10	10	10	10	10	10	10	10	10	10
<b>63/64</b>	10	10	10	10	10	10	10	10	10	10	10	10	10	10	10	10	10	10	10	10	10	10	10	10	10	10	10	10	10	10	10	10	10	10	10	10	10
<b>51/52</b>	10	10	10	10	10	10	10	10	10	10	10	10	10	10	10	10	10	10	10	10	10	10	10	10	10	10	10	10	10	10	10	10	10	10	10	10	10
<b>37/38</b>	10	10	10	10	10	10	10	10	10	10	10	10	10	10	10	10	10	10	10	10	10	10	10	10	10	10	10	10	10	10	10	10	10	10	10	10	10
<b>25/26</b>	10	10	10	10	10	10	10	10	10	10	10	10	10	10	10	10	10	10	10	10	10	10	10	10	10	10	10	10	10	10	10	10	10	10	10	10	10
<b>11/12</b>	10	10	10	10	10	10	10	10	10	10	10	10	10	10	10	10	10	10	10	10	10	10	10	10	10	10	10	10	10	10	10	10	10	10	10	10	10
<b>1 &amp; 2 Bravo</b>	10	10	10	10	10	10	10	10	10	10	10	10	10	10	10	10	10	10	10	10	10	10	10	10	10	10	9	9	9	9	9	9	9	9	9	9	9

**NOTE: This is automated data that may/may not agree with the official BAM thinking that's found on the daily slides or special visibility report slides. This data should be used as a guide only**

# Houston Pilots Wind Chart



## Forecast Confidence



## Example

Sustained wind 13 Knots  
Gusts 18 Knots  
Wind from the N

WS: 13  
G:18  
N

Time Knots	Tue 3am	Tue 4am	Tue 5am	Tue 6am	Tue 7am	Tue 8am	Tue 9am	Tue 10am	Tue 11am	Tue 12pm	Tue 1pm	Tue 2pm	Tue 3pm	Tue 4pm	Tue 5pm	Tue 6pm	Tue 7pm	Tue 8pm	Tue 9pm	Tue 10pm	Tue 11pm	Wed 12am	Wed 1am	Wed 2am	Wed 3am	Wed 4am	Wed 5am	Wed 6am	Wed 7am	Wed 8am	Wed 9am	Wed 10am	Wed 11am	Wed 12pm	Wed 1pm	Wed 2pm
<b>610 Bridge</b>	6 15 SE	6 13 SE	7 16 SE	7 14 SE	6 13 SE	5 12 SE	9 21 SE	11 19 SSE	11 18 SSE	11 17 SSE	11 16 SSE	11 15 SSE	10 15 SSE	10 14 SSE	12 18 SSE	12 17 SSE	11 16 ESE	9 15 ESE	9 14 ESE	9 14 ESE	9 13 ESE	8 12 ESE	7 11 ESE	7 10 ESE	7 10 ESE	6 10 ESE	7 11 ESE	9 14 ESE	10 15 ESE	11 16 ESE	11 16 ESE	11 16 ESE	12 17 ESE	12 17 ESE		
<b>Kinder 1</b>	6 14 SE	5 13 SE	6 15 SE	7 16 SE	6 13 SE	5 12 SE	9 21 SE	11 19 SSE	11 18 SSE	11 17 SSE	11 16 SSE	11 15 SSE	10 15 SSE	10 14 SSE	12 18 SSE	12 17 SSE	11 16 ESE	9 15 ESE	9 14 ESE	9 14 ESE	9 13 ESE	8 12 ESE	7 11 ESE	7 10 ESE	7 10 ESE	6 10 ESE	7 11 ESE	9 14 ESE	10 15 ESE	11 16 ESE	11 16 ESE	11 16 ESE	12 17 ESE	12 17 ESE		
<b>Greens Bayou</b>	6 13 SE	5 13 SE	6 14 SE	6 15 SE	6 13 SE	6 12 SE	9 21 SSE	10 19 SSE	11 18 SSE	11 17 SSE	11 16 SSE	11 15 SSE	11 14 SSE	11 13 SSE	12 18 SSE	12 17 SSE	11 16 ESE	9 15 ESE	9 14 ESE	9 14 ESE	9 13 ESE	8 12 ESE	8 11 ESE	7 10 ESE	7 10 ESE	6 10 ESE	7 11 ESE	9 14 ESE	10 15 ESE	11 16 ESE	11 16 ESE	11 16 ESE	12 17 ESE	12 17 ESE		
<b>Shell Crude</b>	6 14 SE	6 13 SE	6 14 SE	6 14 SE	6 13 SE	6 12 SE	9 21 SSE	11 19 SSE	11 18 SSE	12 17 SSE	12 16 SSE	11 15 SSE	11 14 SSE	11 13 SSE	12 18 SSE	12 17 SSE	11 16 ESE	11 15 ESE	10 14 ESE	9 13 ESE	8 12 ESE	8 11 ESE	7 10 ESE	7 10 ESE	7 10 ESE	7 10 ESE	8 11 ESE	9 14 ESE	10 15 ESE	11 16 ESE	11 16 ESE	11 16 ESE	12 17 ESE	12 17 ESE		
<b>Lynchburg Ferries</b>	13 SE	6 SE	6 SE	6 SE	6 SE	6 SE	9 22 SE	11 20 SSE	12 19 SSE	12 18 SSE	12 17 SSE	12 16 SSE	11 15 SSE	11 14 SSE	12 18 SSE	12 17 SSE	12 16 ESE	11 15 ESE	10 14 ESE	10 13 ESE	9 12 ESE	9 11 ESE	8 10 ESE	8 10 ESE	7 10 ESE	7 10 ESE	7 10 ESE	8 11 ESE	9 14 ESE	10 15 ESE	11 16 ESE	11 16 ESE	12 17 ESE	13 18 ESE		
<b>Exxon 3</b>	7 SE	7 SE	7 SE	7 SE	7 SE	7 SE	9 22 SE	11 20 SSE	12 19 SSE	12 18 SSE	12 17 SSE	11 16 SSE	11 15 SSE	10 14 SSE	13 18 SSE	13 17 SSE	12 16 ESE	11 15 ESE	11 14 ESE	10 13 ESE	10 12 ESE	9 11 ESE	9 10 ESE	8 10 ESE	8 10 ESE	8 10 ESE	8 10 ESE	8 10 ESE	10 14 ESE	10 15 ESE	11 16 ESE	11 16 ESE	12 17 ESE	13 18 ESE		
<b>Morgans Point</b>	8 SE	9 SE	9 SE	9 SE	9 SE	8 SE	10 22 SE	11 21 SSE	11 20 SSE	11 19 SSE	11 18 SSE	11 17 SSE	10 16 SSE	10 15 SSE	10 14 SSE	13 18 SSE	13 17 SSE	13 16 ESE	13 15 ESE	13 14 ESE	12 13 ESE	12 12 ESE	11 11 ESE	11 10 ESE	10 10 ESE	10 10 ESE	9 10 ESE	10 14 ESE	10 15 ESE	11 16 ESE	11 16 ESE	12 17 ESE	13 18 ESE			
<b>75/76</b>	10 SE	11 SE	11 SE	11 SE	11 SE	10 SE	10 21 SE	10 20 SE	10 19 SE	9 18 SE	9 17 SE	9 16 SE	9 15 SE	9 14 SE	15 18 SE	15 17 SE	15 16 ESE	15 15 ESE	15 14 ESE	15 14 ESE	14 13 ESE	14 12 ESE	14 11 ESE	13 10 ESE	13 10 ESE	13 10 ESE	13 10 ESE	13 10 ESE	13 10 ESE	13 10 ESE	13 10 ESE	13 10 ESE	13 10 ESE	13 10 ESE		
<b>63/64</b>	11 SE	11 SE	11 SE	11 SE	11 SE	10 SE	10 21 SE	10 20 SSE	10 19 SSE	9 18 SSE	9 17 SSE	9 16 SSE	9 15 SSE	9 14 SSE	15 18 SSE	15 17 SSE	15 16 ESE	15 15 ESE	15 14 ESE	15 14 ESE	15 14 ESE	14 13 ESE	14 12 ESE	14 11 ESE	13 10 ESE	13 10 ESE	13 10 ESE	13 10 ESE	13 10 ESE	13 10 ESE	13 10 ESE	13 10 ESE	13 10 ESE	13 10 ESE		
<b>51/52</b>	11 SE	11 SE	11 SE	11 SE	11 SE	10 SE	10 21 SE	10 20 SSE	10 19 SSE	9 18 SSE	9 17 SSE	9 16 SSE	9 15 SSE	9 14 SSE	15 18 SSE	15 17 SSE	15 16 ESE	15 15 ESE	15 14 ESE	15 14 ESE	14 13 ESE	14 12 ESE	14 11 ESE	13 10 ESE	13 10 ESE	13 10 ESE	13 10 ESE	13 10 ESE	13 10 ESE	13 10 ESE	13 10 ESE	13 10 ESE	13 10 ESE	13 10 ESE		
<b>37/38</b>	11 SE	11 SE	11 SE	11 SE	10 SE	10 SE	10 21 SE	10 20 SSE	10 19 SSE	10 18 SSE	9 17 SSE	9 16 SSE	9 15 SSE	9 14 SSE	13 18 SSE	13 17 SSE	13 16 ESE	13 15 ESE	13 14 ESE	13 13 ESE	13 12 ESE	13 11 ESE	12 10 ESE	12 10 ESE	12 10 ESE	12 10 ESE	12 10 ESE	12 10 ESE	12 10 ESE	12 10 ESE	12 10 ESE	12 10 ESE	12 10 ESE	12 10 ESE		
<b>25/26</b>	11 SE	11 SE	11 SE	11 SE	10 SE	10 SE	10 21 SE	10 20 SSE	10 19 SSE	10 18 SSE	9 17 SSE	9 16 SSE	9 15 SSE	9 14 SSE	13 18 SSE	13 17 SSE	13 16 ESE	13 15 ESE	13 14 ESE	13 13 ESE	13 12 ESE	12 11 ESE	12 10 ESE	12 10 ESE	12 10 ESE	12 10 ESE	12 10 ESE	12 10 ESE	12 10 ESE	12 10 ESE	12 10 ESE	12 10 ESE	12 10 ESE	12 10 ESE		
<b>11/12</b>	12 SE	13 SE	13 SE	13 SE	12 SE	11 SE	11 21 SSE	11 20 SSE	11 19 SSE	9 18 SSE	9 17 SSE	8 16 SSE	8 15 SSE	8 14 SSE	8 13 SSE	12 18 SSE	12 17 SSE	12 16 ESE	12 15 ESE	12 14 ESE	12 13 ESE	12 12 ESE	12 11 ESE	12 10 ESE	12 10 ESE	12 10 ESE	12 10 ESE	12 10 ESE	12 10 ESE	12 10 ESE	12 10 ESE	12 10 ESE	12 10 ESE	12 10 ESE		
<b>1 &amp; 2 Bravo</b>	14 SE	16 SE	15 SE	14 SE	13 SE	12 SSE	12 21 SSE	10 20 SSE	10 19 SSE	10 18 SSE	9 17 SSE	7 16 SSE	7 15 SSE	7 14 SSE	7 13 SSE	13 18 SSE	13 17 SSE	13 16 ESE	13 15 ESE	13 14 ESE	13 13 ESE	13 12 ESE	13 11 ESE	13 10 ESE	13 10 ESE	13 10 ESE	13 10 ESE	13 10 ESE	13 10 ESE	13 10 ESE	13 10 ESE	13 10 ESE	13 10 ESE	13 10 ESE		

NOTE: This is automated data that may/may not agree with the official BAM thinking that's found on the daily slides. This data should be used as a guide only

## Forecast Discussion

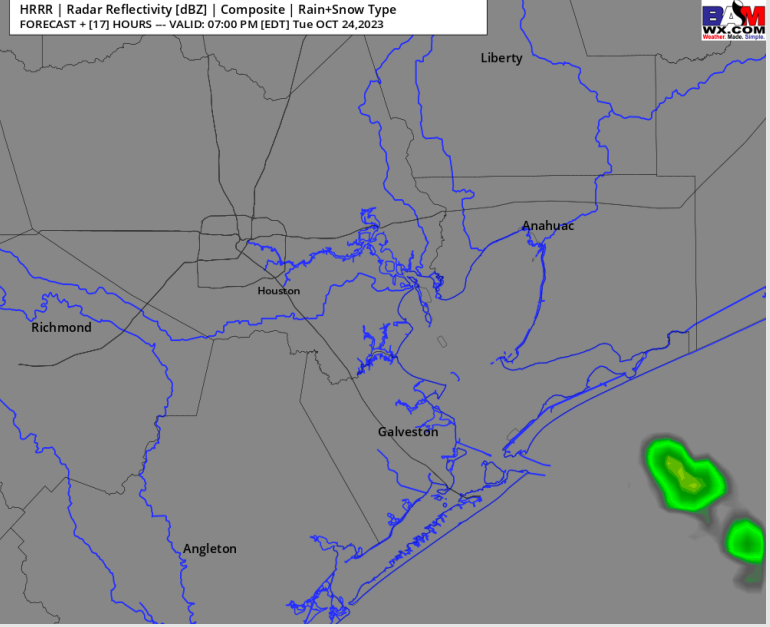
**Precip:** Dry conditions favored through 5 PM, when a 10% chance will exist for a stray, light shower at 11/12 and the Boarding Station.

**Wind:** Winds will become out of the SE throughout the day today. Winds N of Morgan's Point prior to sunrise will be at 5 - 10 kts then increase to 9 - 14 kts by 10 AM. After 5 PM winds begin a calming trend to which they settle in to 4 - 9 kts by 9 PM. S of Morgan's Point will be at 11 - 16 kts throughout the entire day. Wind gusts of 20 - 23 kts will be possible through the mid AM for across all stations mainly through 10 AM. For the Boarding Station, wind gusts of 23-27kts will be possible through 10 AM. Maximum wave heights at 11/12 and the Boarding Station will be at 4 - 5 feet through 7 PM.

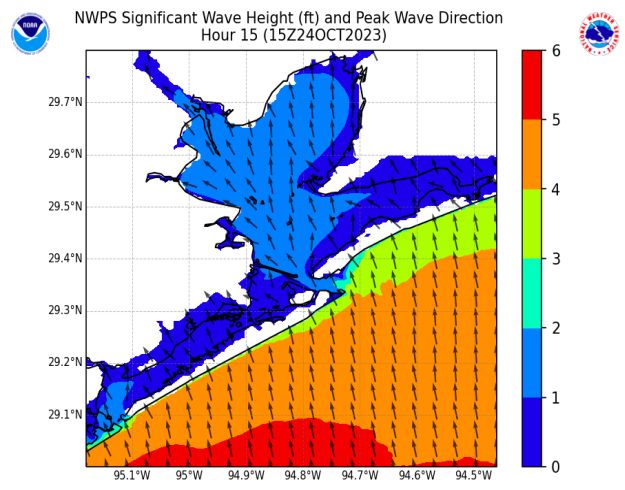
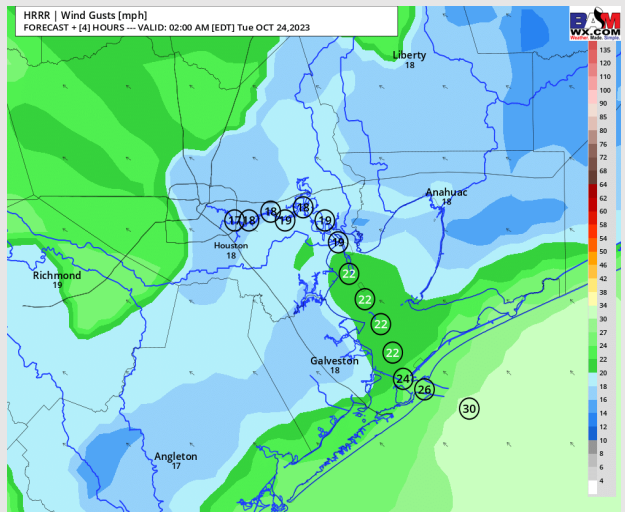
**High Temps:** N of Morgan's Point: Mid 80's F. S of Morgan's Point: Lower 80s F

**Visibility:** No visibility concerns for the remainder of the day.

## Precip Image: 6 PM CT



Wind Gusts  
1AM CT



Max Wave Heights  
10 AM CT

# Houston Pilots: Wed. 10/25/2023



## Forecast Discussion

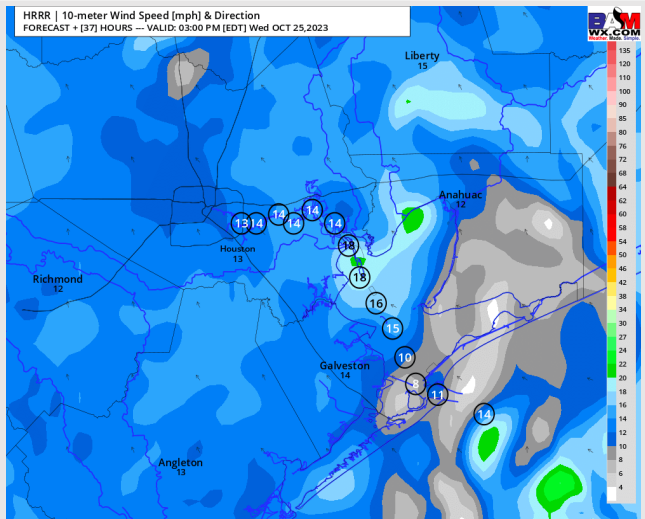
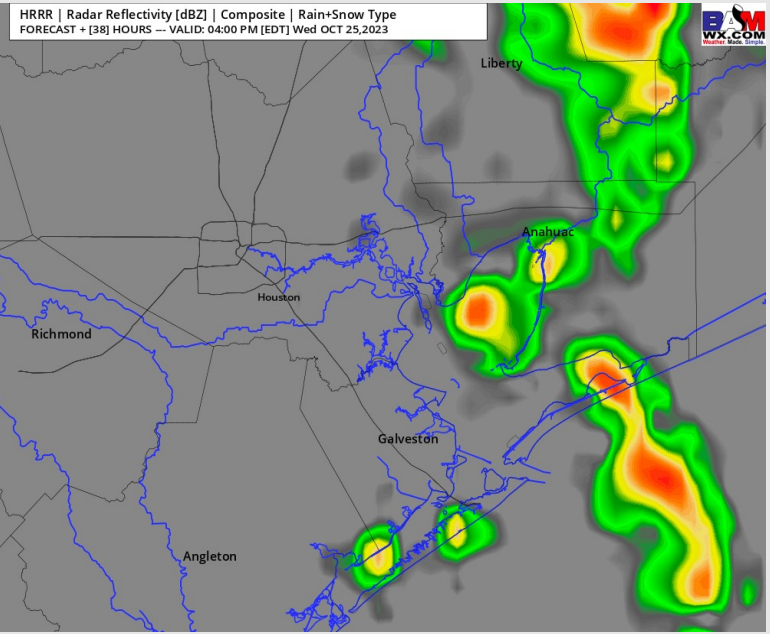
**Precip:** Would need to watch for patchy, light drizzle across all stations starting around 6 AM. Chances remain low at 20%. Towards 9 AM coverage will begin to become more isolated to scattered (30 -40%) with the best window for showers/storms arriving from 1 PM - 5 PM. From 5 PM - 10 PM rain chances will taper off. The risk from 1 -5 PM is that better coverage remains to the west of the bay.

**Wind:** Winds will be out of the SE for the entire day Wednesday. Winds **N of Morgan's Point** will be at 5 - 10 kts through 10 AM before increasing to 10 - 15 kts the rest of the day. Winds **S of Morgan's Point** will start at 11-16 kts before increasing to 13-18kts by 1 PM and remaining there the rest of the day. **Wind gusts of 24-28 kts near the Boarding Station possible after 4 PM. Pending coverage of scattered storms in the PM, A few stronger gusts in the 28 - 32 kt range cannot be ruled out.**

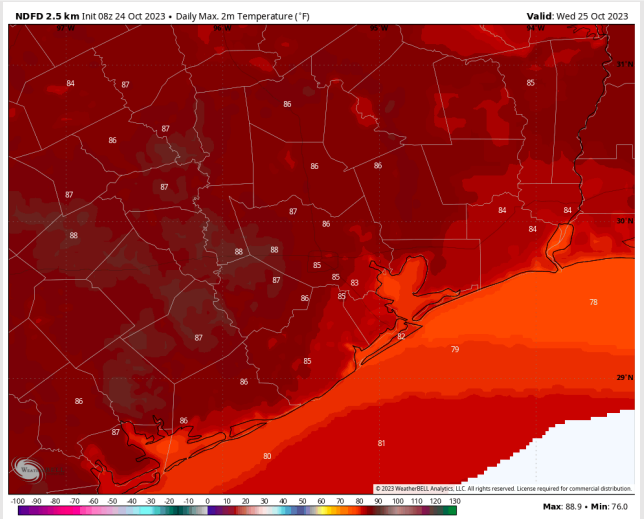
**High Temps:** **N of Morgan's Point:** Mid 80's F. **S of Morgan's Point:** High 70's F to low 80s F.

**Visibility:** Not anticipating any visibility issues at this time.

## Precip Image: 3 PM CT



Wind Speed:  
2 PM CT



High Temps  
Wednesday

# Houston Pilots: Thu. 10/26/2023



## Forecast Discussion

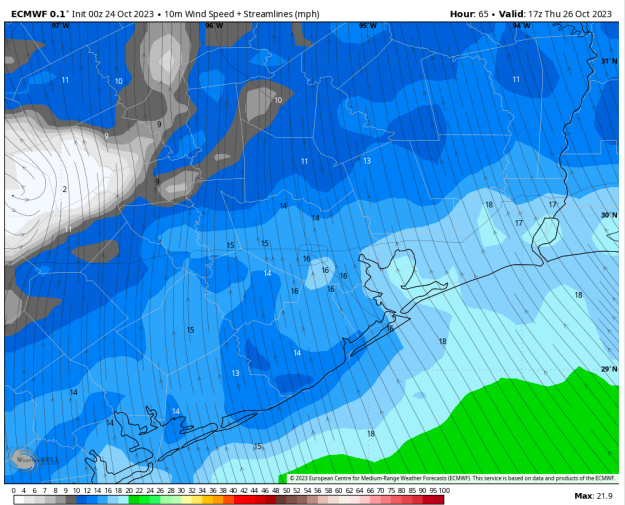
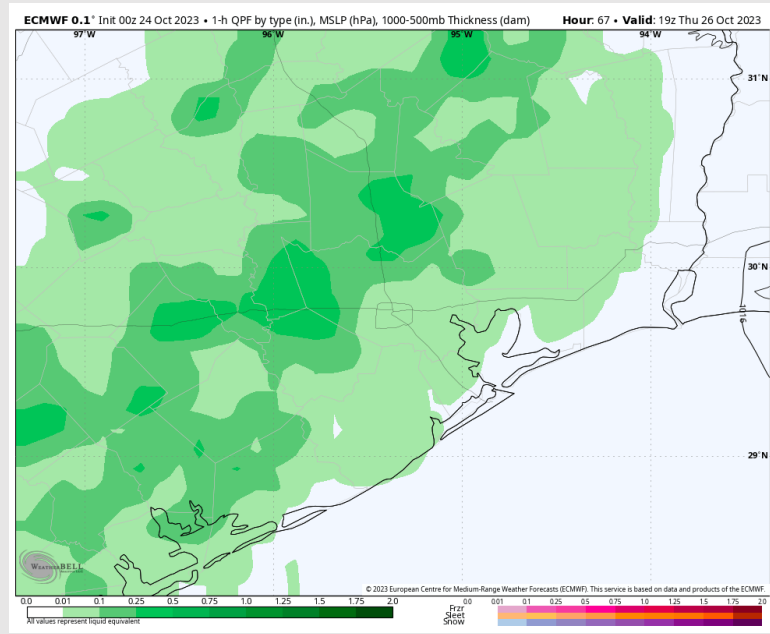
**Precip:** Isolated showers favored through 10 AM Thursday at 10-20% before a front moves through the area with scattered/widespread rain chances. Best timing for leading edge of front to arrive will be near 12 - 2 PM CT. Chances will last through 7 PM before becoming isolated the rest of the evening (7 -10 PM)

**Wind:** Winds out of the SSE / SE throughout the day Thursday. For Stations N of Morgan's Point, winds will be at 8-13 kts through 4 PM before decreasing to 5 - 10 kts. For stations S of Morgan's Point winds will be 13-18 kts through 3 PM before decreasing to 9 - 14 kts the rest of the evening.

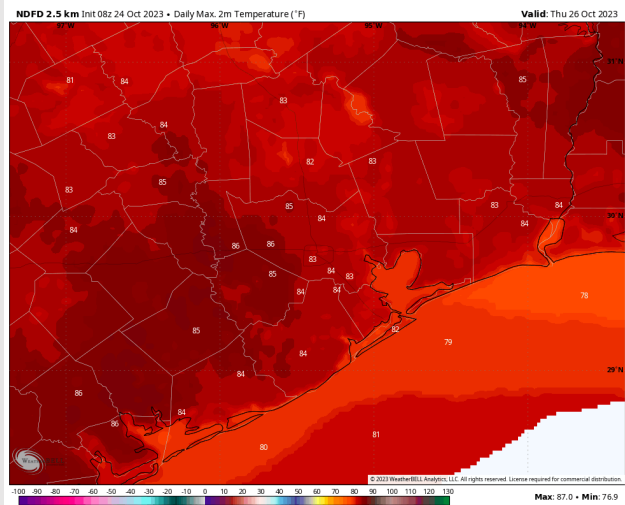
**High Temps:** N of Morgan's Point: Lower to Mid 80's F. S of Morgan's Point: Upper 70s to near 80 F.

**Visibility:** Not anticipating any visibility issues at this time.

## Precip Image: 2 PM CT

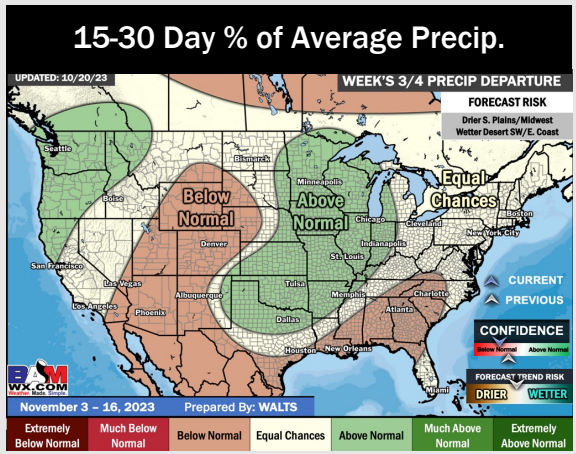
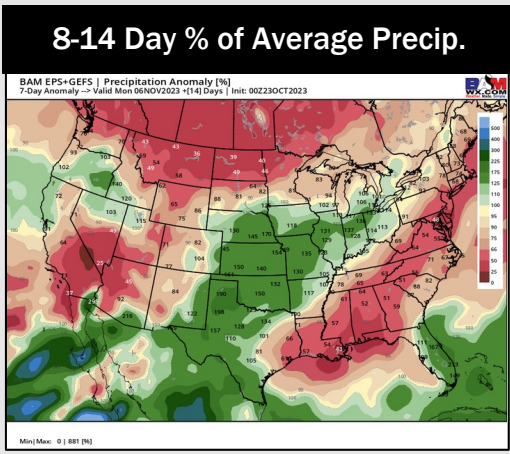
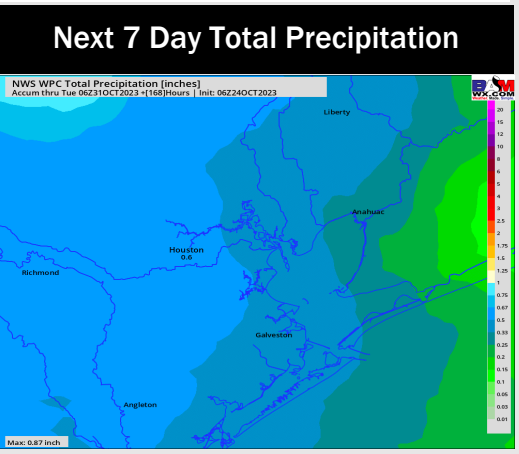
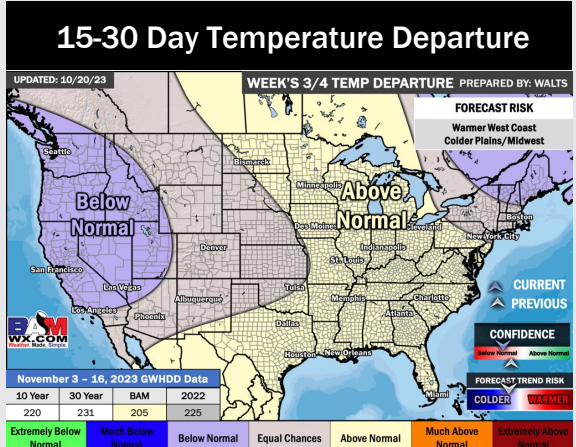
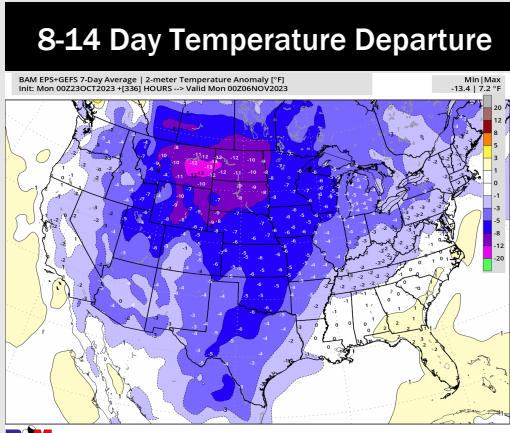
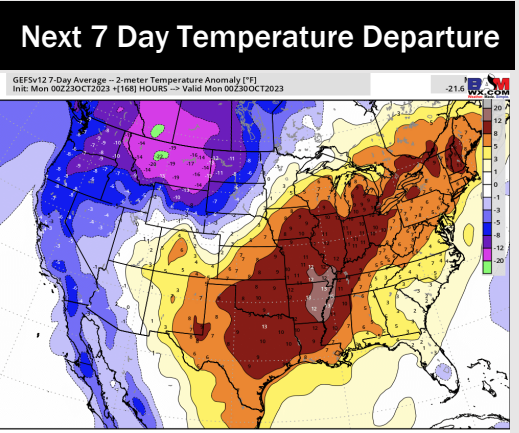


Wind Speed:  
12 PM CT



High Temps  
Thursday

# Houston Pilots: 10/24/23



- Minor precip chances will continue over the short term with better chances moving in on Thursday via a cold front. Behind this cold front, active SE flow will keep rain chances at play through the weekend. Temperatures are favored to remain much above normal this week.
- Slightly below normal rainfall and below normal temperatures are expected into the week 2 timeframe.
- Above normal temperatures and below normal chances for precipitation are favored in the weeks 3/4 timeframe.