

# Houston Pilots Forecast Package



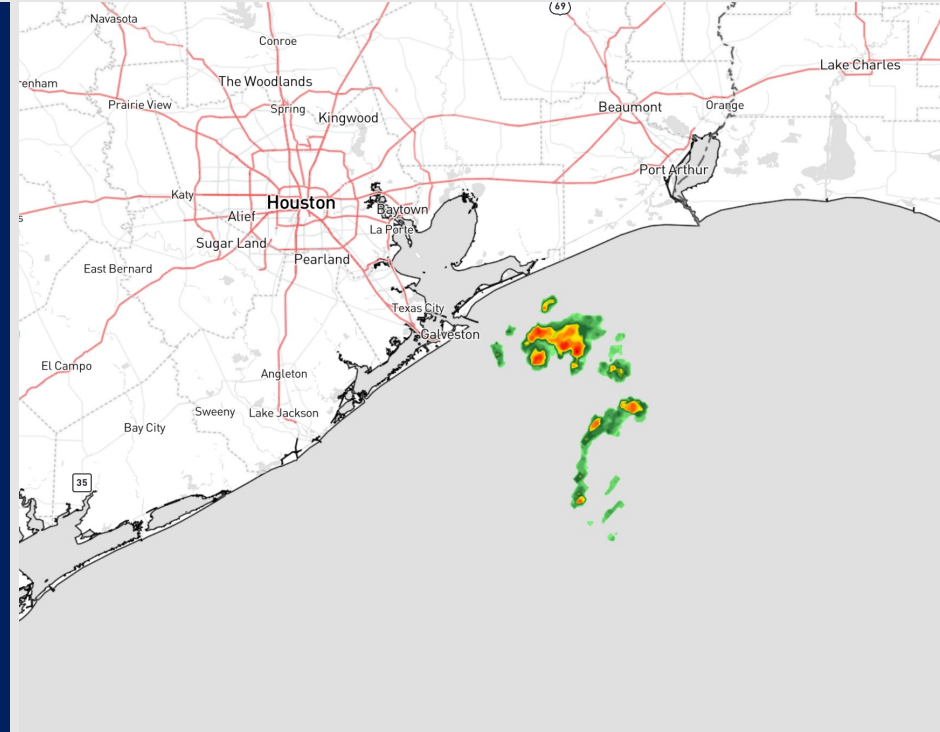
Updated: 2:00 PM CT

Monday, October 23, 2023

Forecaster: John Kemper

## Weather Headlines

- Although minor rain chances around over the next several days, the next best shot of rain will be when a cold front arrives Thursday.
- Wind speeds will generally be highest in the forecast during peak daytime heating at around 10 - 15 kts consistently. Check wind analysis for more details.
- Not anticipating any fog concerns over the next couple days.



**Radar/NWS Alerts: 1:45 PM CT**



As always, please do not hesitate to reach out to us with any forecast questions via the chat option on the Weather Porthole or our on-call number, **(317)-560-8122** press 1 for forecast questions.

# Houston Pilots Visibility Chart (miles)



Time	Mon 12pm	Mon 1pm	Mon 2pm	Mon 3pm	Mon 4pm	Mon 5pm	Mon 6pm	Mon 7pm	Mon 8pm	Mon 9pm	Mon 10pm	Mon 11pm	Tue 12am	Tue 1am	Tue 2am	Tue 3am	Tue 4am	Tue 5am	Tue 6am	Tue 7am	Tue 8am	Tue 9am	Tue 10am	Tue 11am	Tue 12pm	Tue 1pm	Tue 2pm	Tue 3pm	Tue 4pm	Tue 5pm	Tue 6pm	Tue 7pm	Tue 8pm	Tue 9pm	Tue 10pm	Tue 11pm		
610 Bridge	10	10	10	10	10	10	10	10	10	10	10	10	10	10	10	10	10	10	10	10	10	10	10	10	10	10	10	10	10	10	10	10	10	10	10	10	10	10
Kinder 1	10	10	10	10	10	10	10	10	10	10	10	10	10	10	10	10	10	10	10	10	10	10	10	10	10	10	10	10	10	10	10	10	10	10	10	10	10	10
Greens Bayou	10	10	10	10	10	10	10	10	10	10	10	10	10	10	10	10	10	10	10	10	10	10	10	10	10	10	10	10	10	10	10	10	10	10	10	10	10	10
Shell Crude	10	10	10	10	10	10	10	10	10	10	10	10	10	10	10	10	10	10	10	10	10	10	10	10	10	10	10	10	10	10	10	10	10	10	10	10	10	10
Lynchburg Ferries	10	10	10	10	10	10	10	10	10	10	10	10	10	10	10	10	10	10	10	10	10	10	10	10	10	10	10	10	10	10	10	10	10	10	10	10	10	10
Exxon 3	10	10	10	10	10	10	10	10	10	10	10	10	10	10	10	10	10	10	10	10	10	10	10	10	10	10	10	10	10	10	10	10	10	10	10	10	10	10
Morgans Point	10	10	10	10	10	10	10	10	10	10	10	10	10	10	10	10	10	10	10	10	10	10	10	10	10	10	10	10	10	10	10	10	10	10	10	10	10	10
75/76	10	10	10	10	10	10	10	10	10	10	10	10	10	10	10	10	10	10	10	10	10	10	10	10	10	10	10	10	10	10	10	10	10	10	10	10	10	10
63/64	10	10	10	10	10	10	10	10	10	10	10	10	10	10	10	10	10	10	10	10	10	10	10	10	10	10	10	10	10	10	10	10	10	10	10	10	10	10
51/52	10	10	10	10	10	10	10	10	10	10	10	10	10	10	10	10	10	10	10	10	10	10	10	10	10	10	10	10	10	10	10	10	10	10	10	10	10	10
37/38	10	10	10	10	10	10	10	10	10	10	10	10	10	10	10	10	10	10	10	10	10	10	10	10	10	10	10	10	10	10	10	10	10	10	10	10	10	10
25/26	10	10	10	10	10	10	10	10	10	10	10	10	10	10	10	10	10	10	10	10	10	10	10	10	10	10	10	10	10	10	10	10	10	10	10	10	10	10
11/12	10	10	10	10	10	10	10	10	10	10	10	10	10	10	10	10	10	10	10	10	10	10	10	10	10	10	10	10	10	10	10	10	10	10	10	10	10	10
1 & 2 Bravo	10	10	10	10	10	10	10	10	10	10	10	10	10	10	10	10	10	10	10	10	10	10	10	10	10	10	10	10	10	10	10	10	10	10	10	10	10	10

**NOTE: This is automated data that may/may not agree with the official BAM thinking that's found on the daily slides or special visibility report slides. This data should be used as a guide only**

# Houston Pilots Wind Chart



## Forecast Confidence



Sustained wind 13 Knots  
Gusts 18 Knots  
Wind from the N

## Example

WS: 13  
G:18  
N

Time Knots	Mon 12pm	Mon 1pm	Mon 2pm	Mon 3pm	Mon 4pm	Mon 5pm	Mon 6pm	Mon 7pm	Mon 8pm	Mon 9pm	Mon 10pm	Mon 11pm	Tue 12am	Tue 1am	Tue 2am	Tue 3am	Tue 4am	Tue 5am	Tue 6am	Tue 7am	Tue 8am	Tue 9am	Tue 10am	Tue 11am	Tue 12pm	Tue 1pm	Tue 2pm	Tue 3pm	Tue 4pm	Tue 5pm	Tue 6pm	Tue 7pm	Tue 8pm	Tue 9pm	Tue 10pm	Tue 11pm
610 Bridge	8	10	11	11	11	10	9	8	7	7	7	7	6	5	4	7	7	7	7	7	8	9	10	11	12	12	13	13	12	12	12	11	11	10	9	9
	12	14	17	17	18	16	16	18	19	19	18	18	17	11	10	11	11	11	11	10	12	14	16	17	17	18	18	18	18	18	18	17	15	14	13	
Kinder 1	9	10	11	12	12	10	10	8	7	7	7	7	6	5	4	7	7	7	7	8	9	10	12	12	13	13	12	12	12	11	11	10	9	9		
	13	15	18	19	17	17	19	20	19	18	18	17	12	10	11	11	11	10	10	12	14	16	17	17	18	18	18	18	18	18	17	15	14	13		
Greens Bayou	9	11	11	12	12	11	10	8	8	7	7	7	6	5	4	7	8	7	7	8	9	10	12	12	13	13	13	12	12	12	11	11	9	9	9	
	14	16	20	19	20	19	20	20	20	19	19	18	15	12	10	11	11	10	10	12	14	16	17	17	18	18	18	18	18	18	17	14	14	13		
Shell Crude	10	11	10	12	12	11	10	8	8	7	7	7	6	5	4	8	8	7	7	8	9	10	12	13	13	13	13	12	12	11	11	10	10	9		
	15	17	19	19	21	19	20	21	20	19	19	17	15	11	11	11	11	10	11	12	14	15	16	17	18	18	18	18	18	17	16	14	14	13		
Lynchburg Ferries	10	11	8	12	12	10	10	8	8	7	7	6	6	5	5	9	8	8	8	9	10	11	12	13	14	13	13	13	14	13	12	11	10	10	10	
	16	17	20	20	21	20	21	21	20	20	18	16	15	12	11	12	11	11	11	12	14	15	16	17	18	18	18	18	19	18	17	16	15	15	14	
Exxon 3	10	11	9	11	12	10	10	8	8	8	8	7	6	6	6	9	9	9	9	8	9	10	11	12	13	14	13	13	13	14	13	12	11	11	10	
	16	18	20	20	23	21	22	20	20	19	17	15	14	13	13	13	12	12	12	12	12	14	15	16	17	18	18	18	18	19	18	17	16	15	15	14
Morgans Point	9	12	10	11	13	11	11	10	9	9	9	8	8	7	7	11	11	11	10	10	11	11	12	13	13	13	14	14	15	14	13	13	12	12	12	
	17	20	21	22	24	22	22	20	19	19	18	16	14	14	14	14	14	14	13	13	13	14	16	16	17	18	18	19	19	18	17	16	15	14	14	
75/76	7	12	11	12	14	11	12	11	11	12	11	10	9	8	8	14	14	14	14	13	13	13	14	14	13	14	15	15	16	16	15	15	14	14	14	
	16	22	21	23	23	22	21	19	18	19	18	16	14	15	15	15	15	15	15	15	15	16	16	17	17	18	19	19	19	18	17	17	17	16	16	
63/64	8	12	11	13	13	11	11	11	11	12	11	10	9	8	8	14	14	14	14	14	14	14	15	14	14	14	15	15	16	16	15	15	14	14	14	
	17	23	21	23	22	21	20	17	17	18	17	16	14	15	14	15	16	15	15	15	15	16	16	16	16	17	18	18	18	17	17	17	16	16	16	
51/52	9	12	11	13	11	11	11	10	10	12	11	10	8	9	8	13	14	13	13	13	13	14	14	13	13	13	13	14	14	14	14	14	13	13	13	
	17	22	20	22	20	20	20	16	16	17	16	16	14	15	14	15	15	15	15	15	15	15	16	16	16	17	17	17	17	17	16	16	15	15	15	15
37/38	10	9	11	13	10	11	10	10	10	11	10	10	8	8	8	13	13	13	12	13	13	13	14	13	13	13	13	13	13	13	13	13	13	13	13	
	18	19	20	21	19	19	19	16	16	17	16	15	14	15	13	14	14	14	14	14	14	14	15	15	16	16	16	16	16	16	15	15	15	14	14	15
25/26	11	10	12	13	10	10	9	10	10	10	10	9	8	7	11	12	11	11	11	12	13	12	13	12	12	12	12	12	12	12	12	11	11	11	12	
	19	20	19	19	18	18	15	16	17	16	15	14	15	13	13	14	14	14	13	14	14	14	15	15	15	15	15	15	15	15	14	14	14	14	14	14
11/12	10	12	12	13	11	10	10	9	11	11	11	10	10	10	8	12	12	12	12	12	12	12	12	12	12	12	12	12	12	12	12	12	11	11	12	12
	19	21	20	19	18	17	16	15	17	18	17	15	15	16	14	14	14	14	14	14	14	14	15	15	15	15	15	15	15	15	14	14	14	14	14	15
1 & 2 Bravo	11	14	8	11	8	10	10	11	11	12	13	12	12	12	10	15	15	15	15	14	14	14	14	14	14	14	14	14	14	14	14	14	14	14	14	
	17	21	14	17	14	15	15	16	17	18	19	18	17	15	16	16	16	16	16	16	16	16	16	16	16	16	16	16	16	16	16	16	16	16	16	16

NOTE: This is automated data that may/may not agree with the official BAM thinking that's found on the daily slides. This data should be used as a guide only

## Forecast Discussion

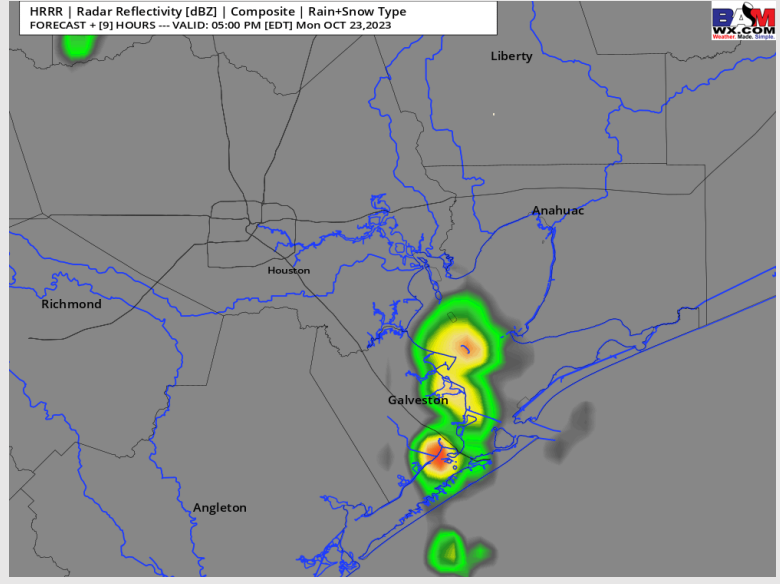
**Precip:** Isolated Shower/Storm chances will continue through the remainder of the evening (20%) for all stations

**Wind:** Winds out of the SSE / SE will continue for all stations. For Stations **N of Morgan's Point**, winds will be at 5 -9 kts through the remainder of the evening. For stations **S of Morgan's Point** winds will be 11 - 14 kts for the remainder of the evening. Towards 10 PM, winds at the Boarding Station can increase to 13 - 16 kts.

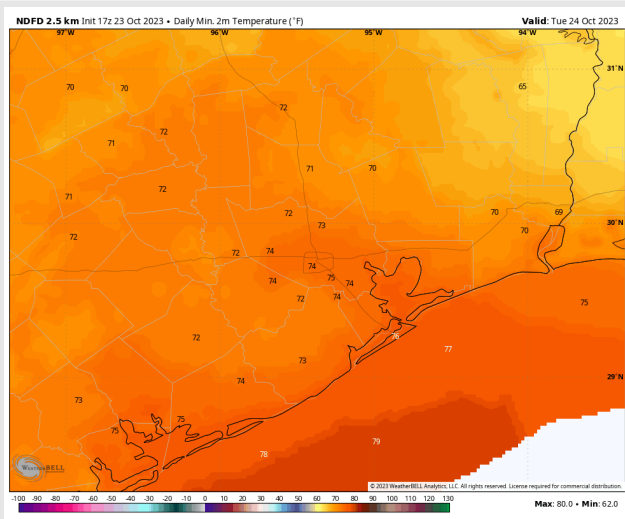
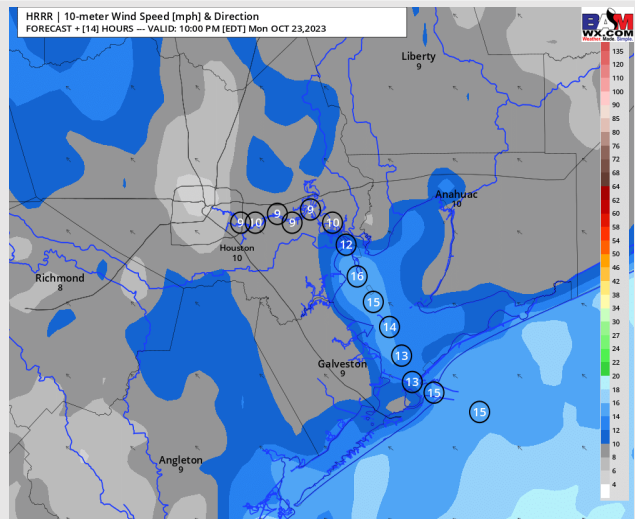
**Low Temps:** **N of Morgan's Point:** Lower to Mid 70's F. **S of Morgan's Point:** Upper 70s F.

**Visibility:** Not anticipating any visibility issues at this time.

## Precip Image: 4 PM CT



Wind Speed:  
9 PM CT



Low Temps  
Today

# Houston Pilots: Tue. 10/24/2023



## Forecast Discussion

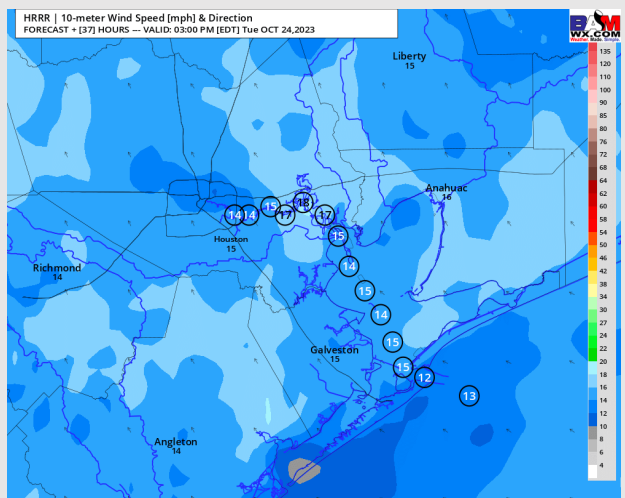
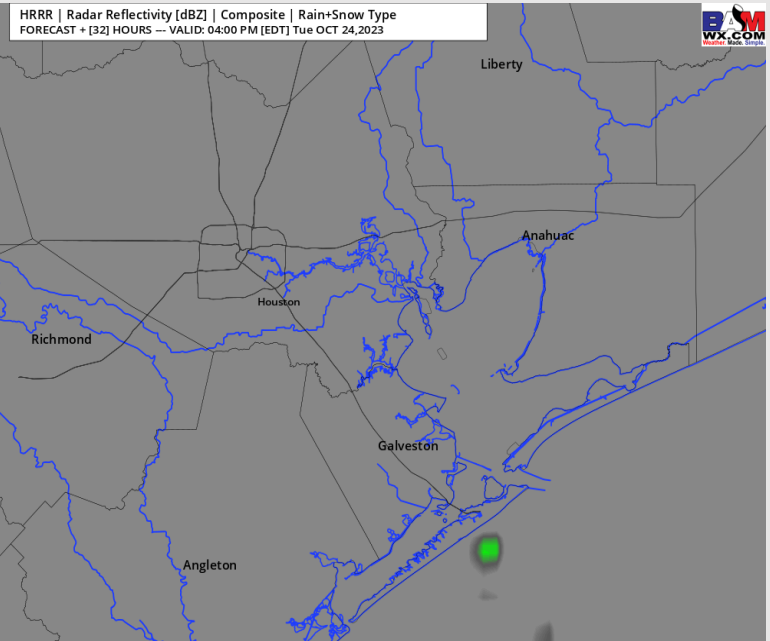
**Precip:** Minor 10% chances for drizzle will be possible through 8 AM. After 8 AM, favoring dry conditions through 2PM, when a 10% chance will exist for a stray, light shower through 7PM (10%). .

**Wind:** Winds will become out of the SE throughout the day Tuesday. Winds **N of Morgan's Point** prior to sunrise will be at 4 - 9 kts then increase to 6 - 11 kts by 10 AM. 12 PM - 6 PM will hold the highest winds at 8 -13 kts. Winds revert to 4 - 9 kts by 9 PM. **S of Morgan's Point** will be at 11 - 16 kts throughout the entire day. **Wind gusts of 20 - 23 kts will be possible in the Mid AM at the Boarding Station.**

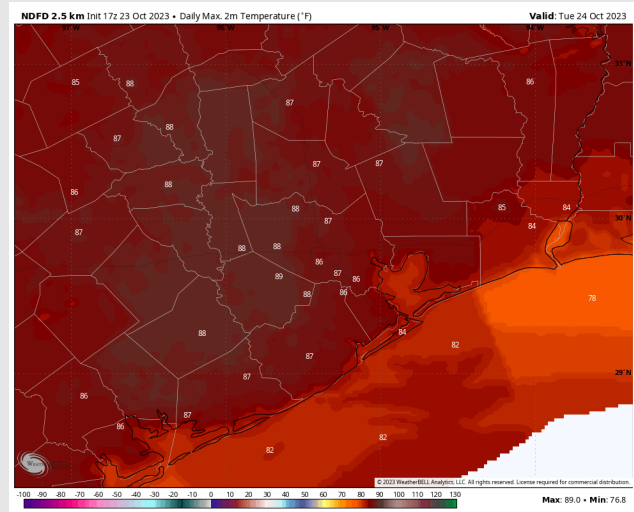
**High Temps:** **N of Morgan's Point:** Mid 80's F. **S of Morgan's Point:** Upper 70's/Near 80 F.

**Visibility:** No visibility concerns for the remainder of the day.

## Precip Image: 3 PM CT



Wind Speed:  
2 PM CT



High Temps  
Tuesday

## Forecast Discussion

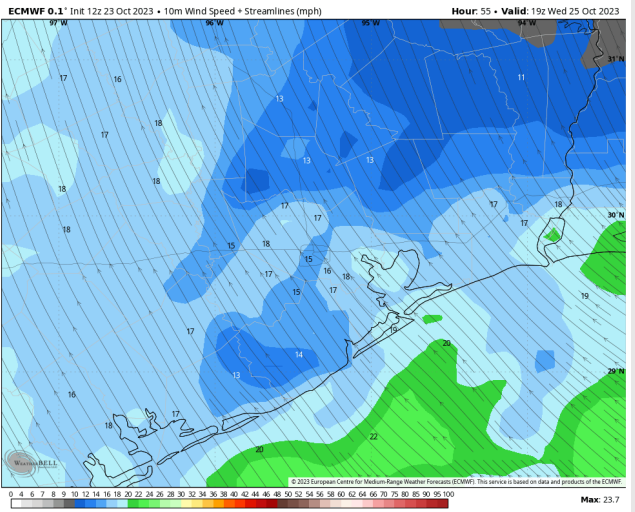
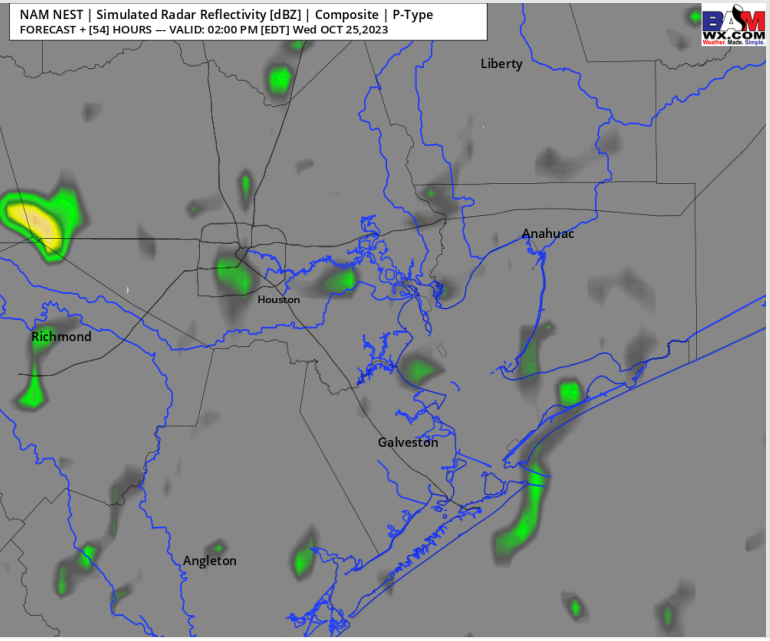
**Precip:** Favoring dry conditions through 10 AM WED before scattered showers/increasing moisture enters from the south. Chances would be near 30 -40% through 5 PM. After 5 PM a few spotty showers can persist at the Boarding Station.

**Wind:** Winds will be out of the SE for the entire day Wednesday. Winds **N of Morgan's Point** will be at 7 - 12 kts through 10 AM before increasing to 11 - 16 kts the rest of the day. Winds **S of Morgan's Point** will be at 13 - 18 kts throughout the entire day.

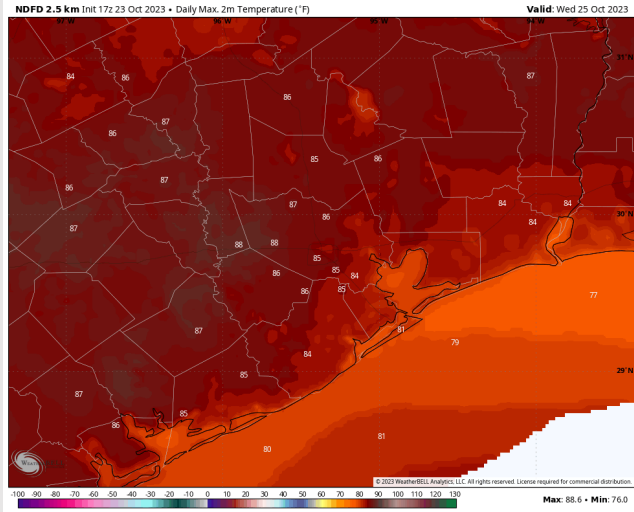
**High Temps:** **N of Morgan's Point:** Mid 80's F. **S of Morgan's Point:** High 70's F to near 80 F.

**Visibility:** Not anticipating any visibility issues at this time.

## Precip Image: 1 PM CT

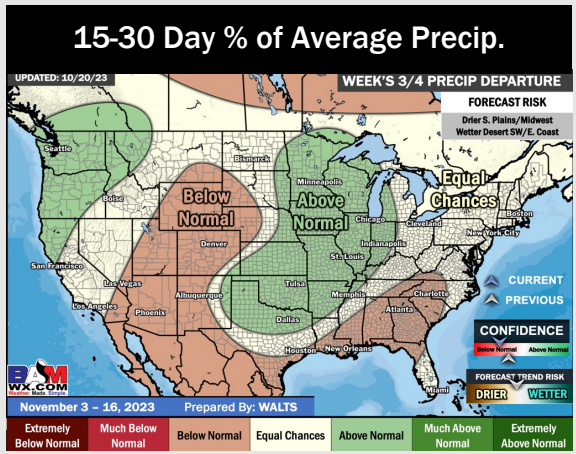
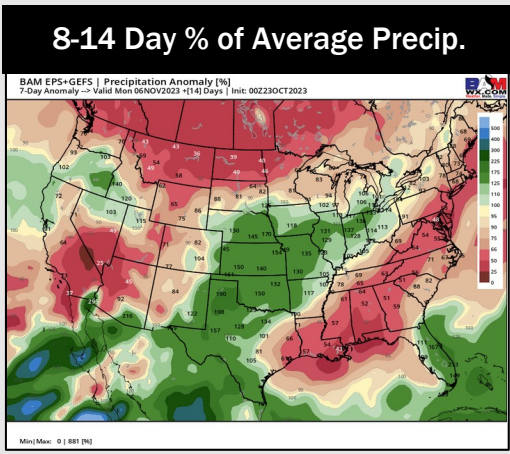
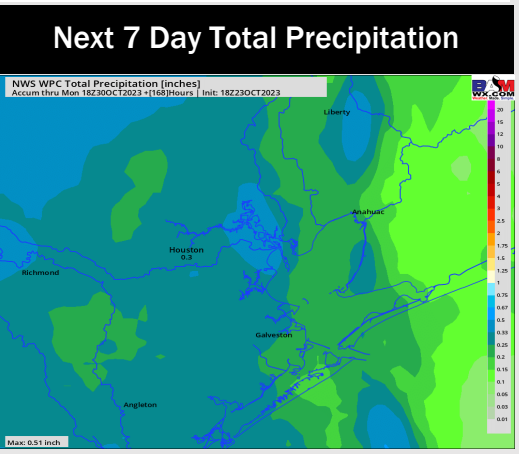
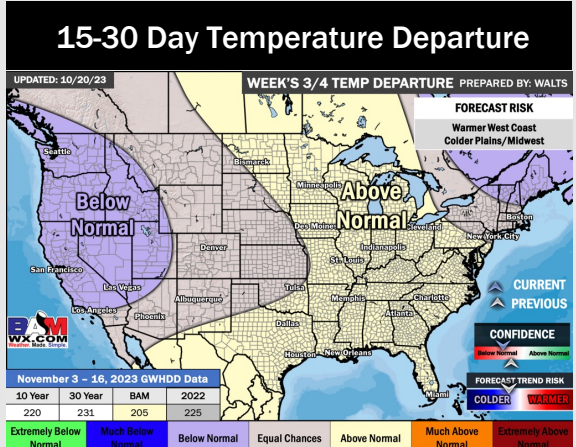
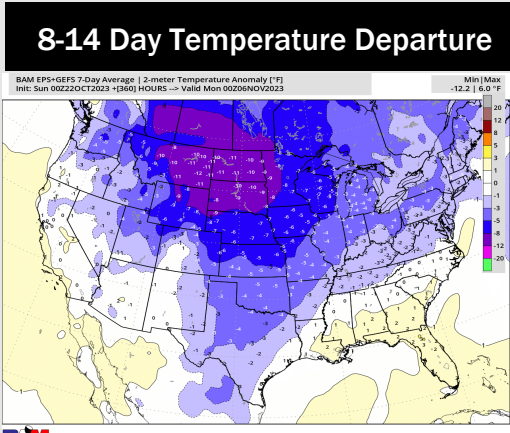
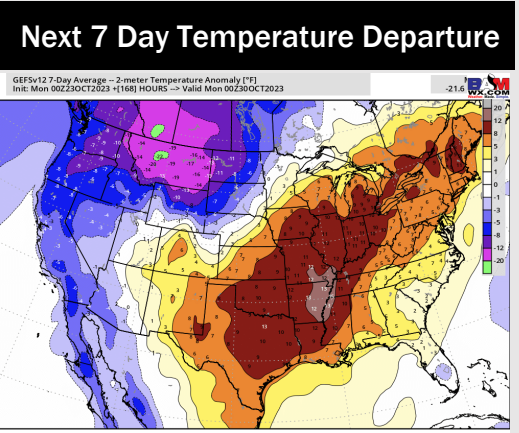


Wind Speed:  
2 PM CT



High Temps  
Wednesday

# Houston Pilots: 10/23/23



- Minor precip chances will continue over the short term with better chances moving in on Thursday via a cold front. Temperatures are favored to remain much above normal this week.
- Slightly below normal rainfall and seasonable temperatures are expected into the week 2 timeframe.
- Above normal temperatures and below normal chances for precipitation are favored in the weeks 3/4 timeframe.