

Houston Pilots Forecast Package



Updated: 2:05 PM CT

Thursday, October 19, 2023

Forecaster: Tyler Riggles

Weather Headlines

- Dry conditions favored for the next few days before a cold front arrives Thursday.
- Winds will continue to remain light for most stations with speeds occasionally reaching 15 MPH, primarily south of Morgan's Point.
- Not favoring any visibility concerns for the week at this time.



Radar/NWS Alerts: 1:57 PM CT



As always, please do not hesitate to reach out to us with any forecast questions via the chat option on the Weather Porthole or our on-call number, **(317)-560-8122** press 1 for forecast questions.

Houston Pilots Visibility Chart (miles)



Time	Thu 1pm	Thu 2pm	Thu 3pm	Thu 4pm	Thu 5pm	Thu 6pm	Thu 7pm	Thu 8pm	Thu 9pm	Thu 10pm	Thu 11pm	Fri 12am	Fri 1am	Fri 2am	Fri 3am	Fri 4am	Fri 5am	Fri 6am	Fri 7am	Fri 8am	Fri 9am	Fri 10am	Fri 11am	Fri 12pm	Fri 1pm	Fri 2pm	Fri 3pm	Fri 4pm	Fri 5pm	Fri 6pm	Fri 7pm	Fri 8pm	Fri 9pm	Fri 10pm	Fri 11pm	Sat 12am		
610 Bridge	10	10	10	10	10	10	10	10	10	10	10	10	10	10	10	10	10	10	10	10	10	10	10	10	10	10	10	10	10	10	10	10	10	10	10	10	10	
Kinder 1	10	10	10	10	10	10	10	10	10	10	10	10	10	10	10	10	10	10	10	10	10	10	10	10	10	10	10	10	10	10	10	10	10	10	10	10	10	10
Greens Bayou	10	10	10	10	10	10	10	10	10	10	10	10	10	10	10	10	10	10	10	10	10	10	10	10	10	10	10	10	10	10	10	10	10	10	10	10	10	10
Shell Crude	10	10	10	10	10	10	10	10	10	10	10	10	10	10	10	10	10	10	10	10	10	10	10	10	10	10	10	10	10	10	10	10	10	10	10	10	10	10
Lynchburg Ferries	10	10	10	10	10	10	10	10	10	10	10	10	10	10	10	10	10	10	10	10	10	10	10	10	10	10	10	10	10	10	10	10	10	10	10	10	10	10
Exxon 3	10	10	10	10	10	10	10	10	10	10	10	10	10	10	10	10	10	10	10	10	10	10	10	10	10	10	10	10	10	10	10	10	10	10	10	10	10	10
Morgans Point	10	10	10	10	10	10	10	10	10	10	10	10	10	10	10	10	10	10	10	10	10	10	10	10	10	10	10	10	10	10	10	10	10	10	10	10	10	10
75/76	10	10	10	10	10	10	10	10	10	10	10	10	10	10	10	10	10	10	10	10	10	10	10	10	10	10	10	10	10	10	10	10	10	10	10	10	10	10
63/64	10	10	10	10	10	10	10	10	10	10	10	10	10	10	10	10	10	10	10	10	10	10	10	10	10	10	10	10	10	10	10	10	10	10	10	10	10	10
51/52	10	10	10	10	10	10	10	10	10	10	10	10	10	10	10	10	10	10	10	10	10	10	10	10	10	10	10	10	10	10	10	10	10	10	10	10	10	10
37/38	10	10	10	10	10	10	10	10	10	10	10	10	10	10	10	10	10	10	10	10	10	10	10	10	10	10	10	10	10	10	10	10	10	10	10	10	10	10
25/26	10	10	10	10	10	10	10	10	10	10	10	10	10	10	10	10	10	10	10	10	10	10	10	10	10	10	10	10	10	10	10	10	10	10	10	10	10	10
11/12	10	10	10	10	10	10	10	10	10	10	10	10	10	10	10	10	10	10	10	10	10	10	10	10	10	10	10	10	10	10	10	10	10	10	10	10	10	10
1 & 2 Bravo	10	10	10	10	10	10	10	10	10	10	10	10	10	10	10	10	10	10	10	10	10	10	10	10	10	10	10	10	10	10	10	10	10	10	10	10	10	10

NOTE: This is automated data that may/may not agree with the official BAM thinking that's found on the daily slides or special visibility report slides. This data should be used as a guide only

Houston Pilots Wind Chart



Forecast Confidence



Example

Sustained wind 13 Knots
Gusts 18 Knots
Wind from the N

WS: 13
G:18
N

Time Knots	Thu 1pm	Thu 2pm	Thu 3pm	Thu 4pm	Thu 5pm	Thu 6pm	Thu 7pm	Thu 8pm	Thu 9pm	Thu 10pm	Thu 11pm	Fri 12am	Fri 1am	Fri 2am	Fri 3am	Fri 4am	Fri 5am	Fri 6am	Fri 7am	Fri 8am	Fri 9am	Fri 10am	Fri 11am	Fri 12pm	Fri 1pm	Fri 2pm	Fri 3pm	Fri 4pm	Fri 5pm	Fri 6pm	Fri 7pm	Fri 8pm	Fri 9pm	Fri 10pm	Fri 11pm	Sat 12am			
610 Bridge	5	4	3	3	3	3	4	5	4	4	4	4	3	3	2	2	2	2	2	2	2	3	4	4	4	5	6	6	6	4	4	4	4	3	3	3			
Kinder 1	5	4	3	3	3	3	5	5	4	4	4	4	3	3	3	2	2	2	2	2	2	3	4	4	4	5	6	6	6	4	4	4	4	3	3	3			
Greens Bayou	5	4	3	2	4	4	5	4	4	4	4	3	2	2	3	2	2	2	2	2	2	3	4	4	4	4	6	6	6	4	4	4	4	3	3	3			
Shell Crude	6	4	4	5	6	8	10	11	10	9	10	9	10	10	9	4	3	2	3	4	5	6	5	6	7	7	9	9	9	7	5	6	6	5	6	5			
Lynchburg Ferries	4	3	2	3	6	6	5	5	4	4	3	2	1	2	2	3	2	2	2	2	3	3	4	4	5	5	5	6	6	6	5	4	4	4	4	3	4		
Exxon 3	4	3	4	5	7	6	5	5	5	4	4	3	2	2	2	4	3	3	3	3	4	4	4	4	5	5	6	6	5	5	5	5	5	4	4	4	4		
Morgans Point	6	5	5	7	9	10	11	11	10	9	9	9	9	10	10	5	4	4	4	4	4	5	6	6	6	7	7	9	9	9	7	6	6	6	5	5	5		
75/76	5	7	7	9	10	8	7	6	6	6	6	7	8	8	8	9	7	6	6	6	6	6	6	5	5	5	5	6	7	8	8	8	8	8	7	6	6	6	
63/64	6	7	9	12	13	11	10	9	9	9	10	12	12	12	13	8	7	6	6	7	7	7	7	7	7	8	8	9	9	10	9	8	7	7	7	7	6	6	
51/52	4	5	7	9	8	7	6	5	5	6	7	7	8	9	7	6	5	5	6	7	7	7	7	7	7	7	8	9	9	8	8	8	7	7	7	7	7	6	6
37/38	2	4	6	8	7	6	6	5	4	3	4	5	5	7	7	6	5	5	5	5	5	6	6	6	6	5	5	5	6	7	7	7	7	7	6	6	5	5	5
25/26	3	4	6	7	7	6	6	5	4	4	4	5	5	6	7	7	6	6	6	6	6	7	7	6	6	5	5	6	6	7	7	7	7	7	6	6	6	6	6
11/12	4	5	7	8	9	9	10	9	8	8	8	9	9	11	12	8	7	6	7	6	7	8	8	7	7	7	7	8	8	8	8	8	8	8	8	8	7	7	7
1 & 2 Bravo	3	3	5	7	7	7	8	6	5	5	6	6	7	8	9	8	7	7	7	7	8	8	7	6	6	6	7	7	8	8	8	8	8	8	8	8	8	8	8

NOTE: This is automated data that may/may not agree with the official BAM thinking that's found on the daily slides. This data should be used as a guide only

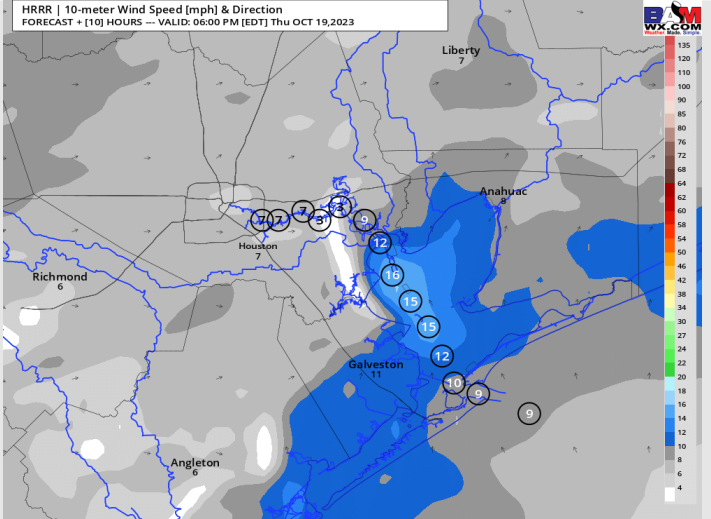
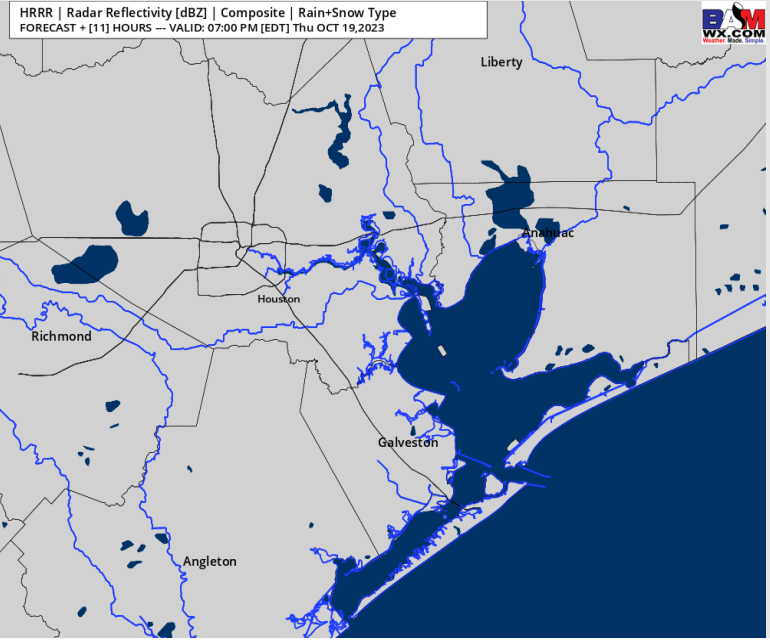
Houston Pilots: Thu. 10/19/2023



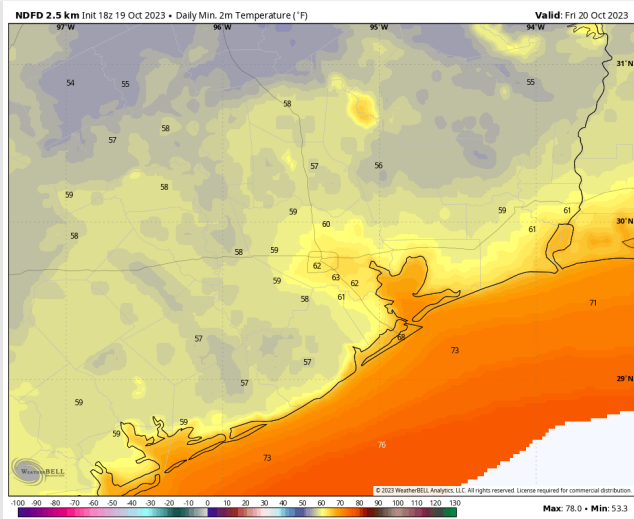
Forecast Discussion

- Precip:** Favoring dry conditions today.
- Wind:** Winds will be out of the WSW to SW for the remainder of the day as a weak front pushes through the region. **N of Morgan's Point** will be at 3 - 6 kts the entire day. Locations **S of Morgan's Point** will increase to 10 - 15 kts by 5 PM and continue through the remainder of the evening.
- Low Temps:** **N of Morgan's Point:** Upper 50's to Low 60's F. **S of Morgan's Point:** Low 70's F
- Visibility:** Not anticipating any visibility issues currently.

Precip Image: 6 PM CT



Wind Speed:
5 PM CT



Low Temps
THU AM

Houston Pilots: Fri. 10/20/2023



Forecast Discussion

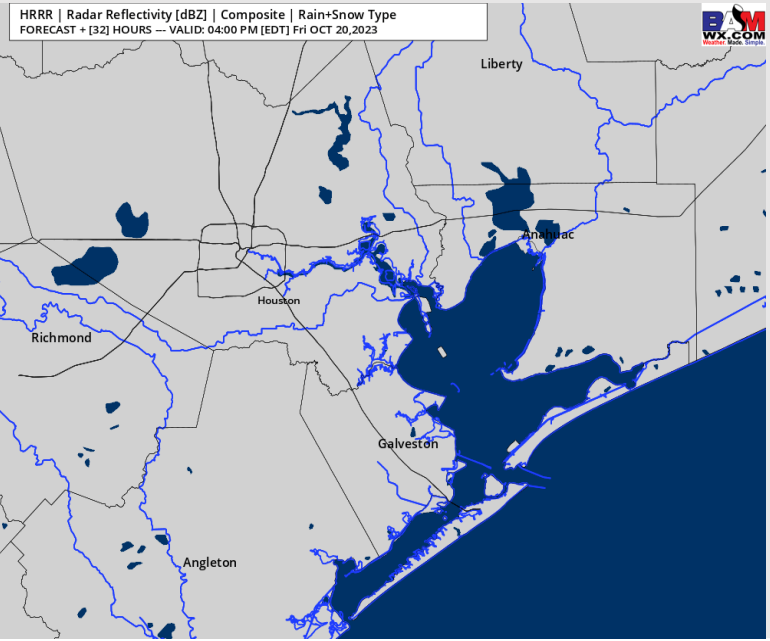
Precip: Anticipating dry conditions for Friday.

Wind: Anticipating winds out of the W/NW before shifting to be out of the S/SW by 6 PM and remaining that way for the rest of the day. For Stations **N of Morgan's Point**, winds will be at 3-8 kts throughout the day Friday. For stations **S of Morgan's Point** 9 – 14 kts winds will be possible for the boarding station until 4 AM. Winds will then be 4 – 9 kts until 5 PM when winds will increase to 10 – 15 kts for the remainder of the evening.

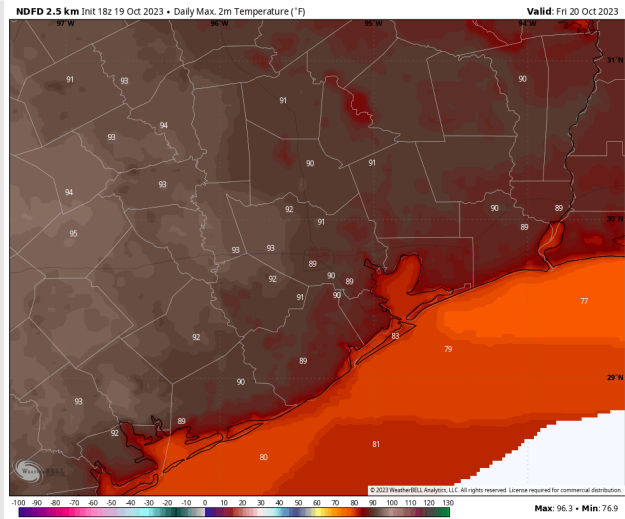
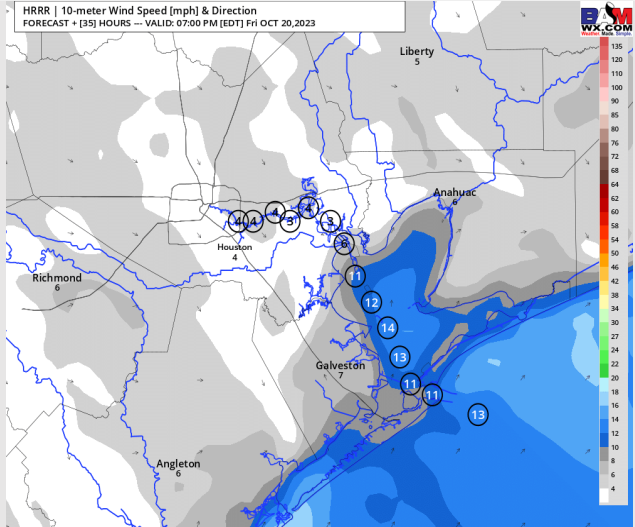
High Temps: **N of Morgan's Point:** Upper 80's F to Lower 90's F. **S of Morgan's Point:** Upper 70's/lower 80's F.

Visibility: Patchy Fog will be Possible for Shell Crude through 610 Bridge Station. Low-End risk for visibilities of 3-5 miles.

Precip Image: 3 PM CT



Wind Speed:
6 PM CT



High Temps
Friday

Houston Pilots: sat. 10/21/2023



Forecast Discussion

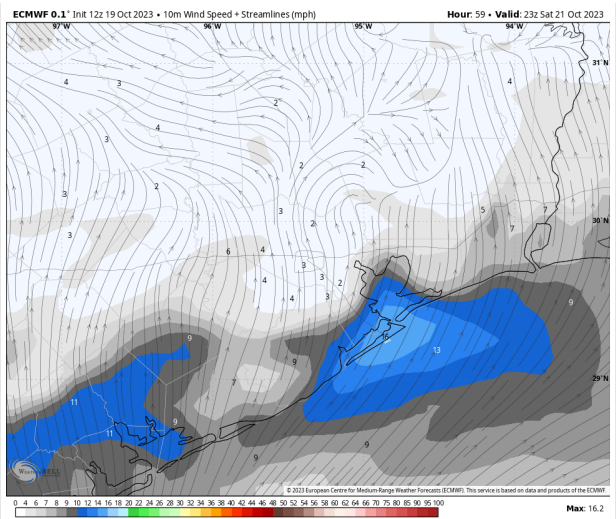
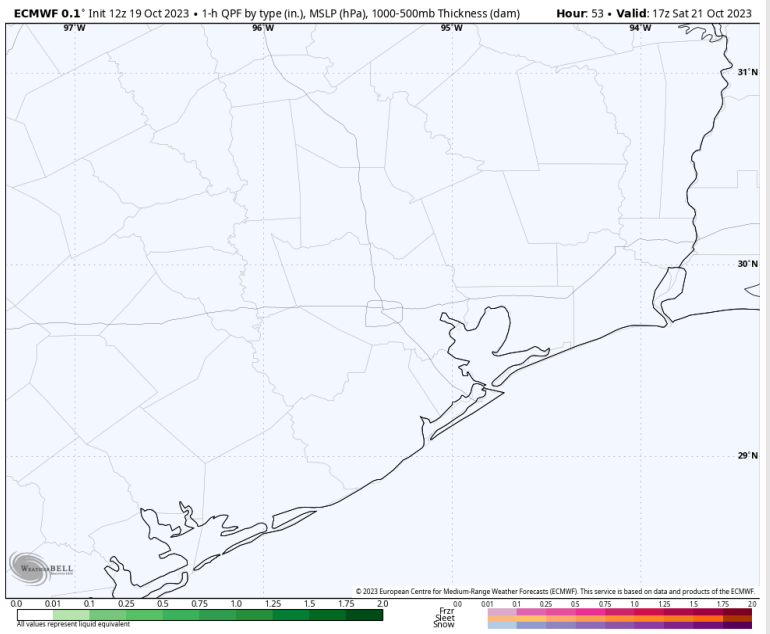
Precip: Favoring dry conditions throughout Saturday.

Wind: Winds will shift from the WSW during the AM to out of the S by 5PM. For Stations **N of Morgan's Point**, winds will be at 3-6 kts throughout the day. **S of Morgan's Point** will begin the day at 8-12 kts then decrease to 3 - 6 kts by 6 AM and remain there through 3PM, before increasing back to 8-12 kts for the remainder of the evening.

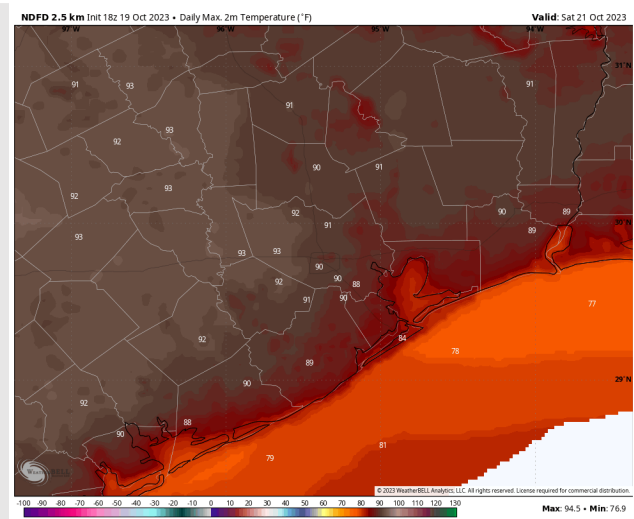
High Temps: **N of Morgan's Point:** Upper 80's F to Lower 90's F. **S of Morgan's Point:** Upper 70's/lower 80's F.

Visibility: Not anticipating any visibility issues currently.

Precip Image: 12 PM CT



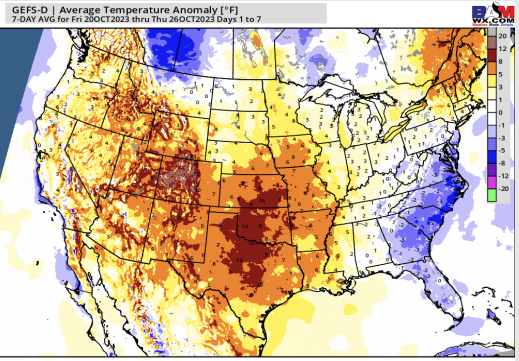
Wind Speed:
6 PM CT



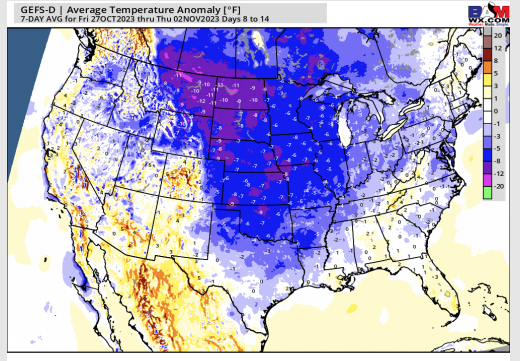
High Temps
Saturday

Houston Pilots: 10/19/23

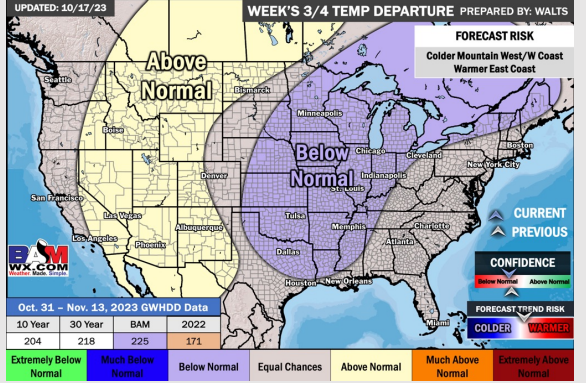
Next 7 Day Temperature Departure



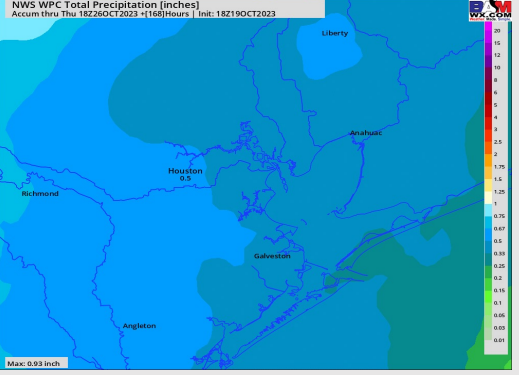
8-14 Day Temperature Departure



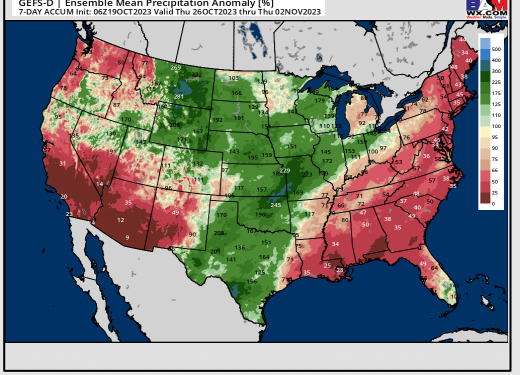
15-30 Day Temperature Departure



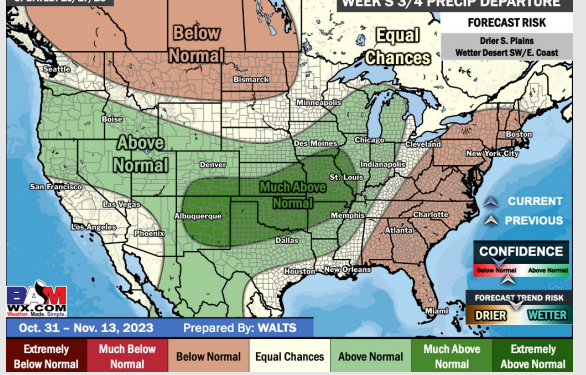
Next 7 Day Total Precipitation



8-14 Day % of Average Precip.



15-30 Day % of Average Precip.



- A dry stretch will be upcoming the first half of the week. The next potential light rain chance would come Tuesday, but better chances move in Thursday. Temperatures are favored to remain above normal this week.
- Generally average rainfall wise and slightly below normal temperatures are expected into the week 2 timeframe.
- Near to below normal temperatures and normal chances for precipitation are favored in the weeks 3/4 timeframe.