

# Houston Pilots Forecast Package



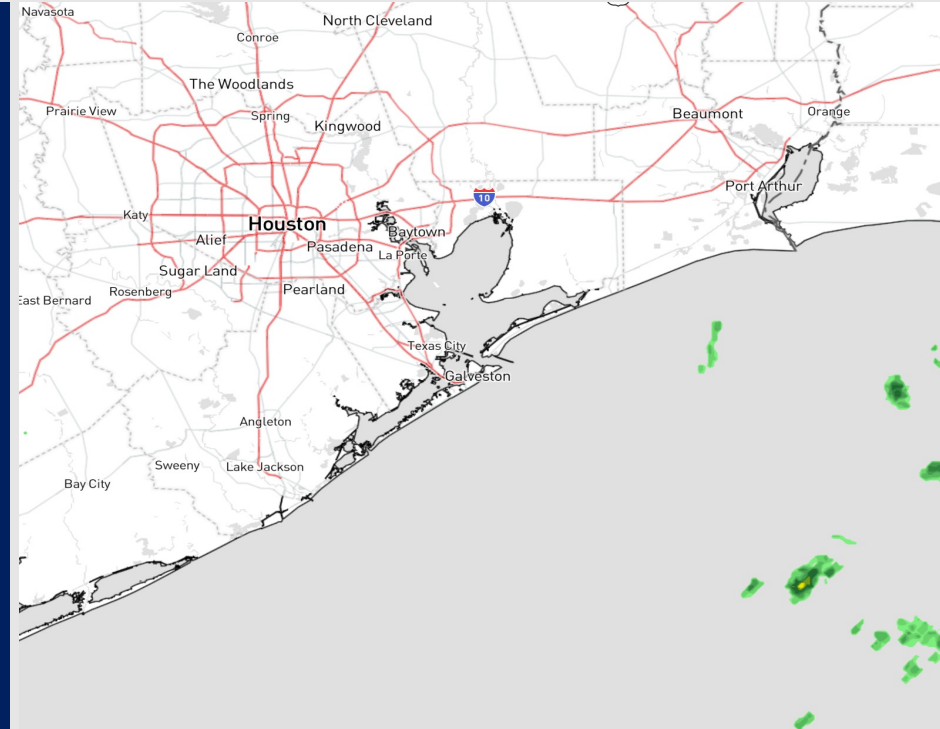
Updated: 4:30 AM CT

Thursday, October 19, 2023

Forecaster: Alyssa Elliott

## Weather Headlines

- Dry conditions favored for the next few days before a cold front arrives Thursday.
- Winds will continue to remain light for most stations with speeds occasionally reaching 15 MPH, primarily south of Morgan's Point.
- Not favoring any visibility concerns for the week at this time.



**Radar/NWS Alerts: 4:20 AM CT**



As always, please do not hesitate to reach out to us with any forecast questions via the chat option on the Weather Porthole or our on-call number, **(317)-560-8122** press 1 for forecast questions.

# Houston Pilots Visibility Chart (miles)



Time	Thu 3am	Thu 4am	Thu 5am	Thu 6am	Thu 7am	Thu 8am	Thu 9am	Thu 10am	Thu 11am	Thu 12pm	Thu 1pm	Thu 2pm	Thu 3pm	Thu 4pm	Thu 5pm	Thu 6pm	Thu 7pm	Thu 8pm	Thu 9pm	Thu 10pm	Thu 11pm	Fri 12am	Fri 1am	Fri 2am	Fri 3am	Fri 4am	Fri 5am	Fri 6am	Fri 7am	Fri 8am	Fri 9am	Fri 10am	Fri 11am	Fri 12pm	Fri 1pm	Fri 2pm
610 Bridge	10	10	10	10	10	10	10	10	10	10	10	10	10	10	10	10	10	10	10	10	10	10	10	10	10	7	8	8	8	7	10	10	10	10	10	10
Kinder 1	10	10	10	10	10	10	10	10	10	10	10	10	10	10	10	10	10	10	10	10	10	10	10	10	10	7	8	8	9	8	10	10	10	10	10	10
Greens Bayou	10	10	10	10	10	10	10	10	10	10	10	10	10	10	10	10	10	10	10	10	10	10	10	10	10	8	8	8	10	10	10	10	10	10	10	
Shell Crude	10	10	10	10	10	10	10	10	10	10	10	10	10	10	10	10	10	10	10	10	10	10	10	10	10	8	8	8	10	10	10	10	10	10	10	
Lynchburg Ferries	10	10	10	10	10	10	10	10	10	10	10	10	10	10	10	10	10	10	10	10	10	10	10	10	10	8	8	8	10	10	10	10	10	10	10	
Exxon 3	10	10	10	10	10	10	10	10	10	10	10	10	10	10	10	10	10	10	10	10	10	10	10	10	10	8	8	8	10	10	10	10	10	10	10	
Morgans Point	10	10	10	10	10	10	10	10	10	10	10	10	10	10	10	10	10	10	10	10	10	10	10	10	10	8	8	8	10	10	10	10	10	10	10	
75/76	10	10	10	10	10	10	10	10	10	10	10	10	10	10	10	10	10	10	10	10	10	10	10	10	10	8	8	8	10	10	10	10	10	10	10	
63/64	10	10	10	10	10	10	10	10	10	10	10	10	10	10	10	10	10	10	10	10	10	10	10	10	10	8	8	10	10	10	10	10	10	10	10	
51/52	10	10	10	10	10	10	10	10	10	10	10	10	10	10	10	10	10	10	10	10	10	10	10	10	10	8	10	10	10	10	10	10	10	10	10	
37/38	10	10	10	10	10	10	10	10	10	10	10	10	10	10	10	10	10	10	10	10	10	10	10	10	10	8	10	10	10	10	10	10	10	10	10	
25/26	10	10	10	10	10	10	10	10	10	10	10	10	10	10	10	10	10	10	10	10	10	10	10	10	10	8	10	10	10	10	10	10	10	10	10	
11/12	10	10	10	10	10	10	10	10	10	10	10	10	10	10	10	10	10	10	10	10	10	10	10	10	10	8	10	10	10	10	10	10	10	10	10	
1 & 2 Bravo	10	10	10	10	10	10	10	10	10	10	10	10	10	10	10	10	10	10	10	10	10	10	9	9	9	9	8	9	10	10	10	10	10	10	10	

**NOTE: This is automated data that may/may not agree with the official BAM thinking that's found on the daily slides or special visibility report slides. This data should be used as a guide only**

# Houston Pilots Wind Chart



## Forecast Confidence



Sustained wind 13 Knots  
Gusts 18 Knots  
Wind from the N

## Example

WS: 13  
G:18  
N

Time Knots	Thu 3am	Thu 4am	Thu 5am	Thu 6am	Thu 7am	Thu 8am	Thu 9am	Thu 10am	Thu 11am	Thu 12pm	Thu 1pm	Thu 2pm	Thu 3pm	Thu 4pm	Thu 5pm	Thu 6pm	Thu 7pm	Thu 8pm	Thu 9pm	Thu 10pm	Thu 11pm	Fri 12am	Fri 1am	Fri 2am	Fri 3am	Fri 4am	Fri 5am	Fri 6am	Fri 7am	Fri 8am	Fri 9am	Fri 10am	Fri 11am	Fri 12pm	Fri 1pm	Fri 2pm				
610 Bridge	3	3	2	3	2	2	1	2	5	7	6	6	5	5	4	5	4	4	4	4	4	4	4	3	2	2	2	2	2	2	2	2	4	4	4	4	4			
	3	3	4	4	4	4	3	8	9	9	9	8	7	6	6	8	6	6	6	6	7	7	6	6	5	4	4	3	3	3	3	3	4	5	5	6	7	7		
	ENE	E	SE	ESE	ESE	ESE	SSE	SSW	SW	WSW	W	W	W	W	W	WSW	SW	S	S	SSW	SW	WSW	W	WNW	WNW	NW	NW	NW	NW	NW	WNW	WNW	WNW	WNW	WNW	WNW	NW			
Kinder 1	3	3	2	3	2	2	1	2	5	7	6	6	5	4	4	5	4	4	4	4	4	4	4	3	2	2	2	2	2	2	2	4	4	4	4	4	4			
	3	3	4	4	4	4	3	8	9	9	8	8	7	6	6	7	6	6	6	7	7	6	6	5	4	4	3	3	3	3	4	5	5	6	7	7	7			
	SE	E	SE	ESE	ESE	E	SE	SSW	SW	WSW	W	W	W	W	W	WSW	SSW	S	S	SSW	SW	WSW	W	WNW	WNW	NW	NW	NW	NW	WNW	WNW	WNW	WNW	WNW	WNW	WNW	NW			
Greens Bayou	3	2	2	3	2	2	1	2	5	7	6	6	5	4	4	5	4	4	4	4	4	4	4	3	3	2	2	2	2	2	4	4	4	4	4	4	4			
	3	2	4	4	4	4	3	8	9	9	8	8	7	6	6	8	7	7	6	7	6	6	6	5	4	4	3	3	3	3	4	5	5	6	7	7	7			
	WSW	E	ESE	ESE	E	E	ESE	SSW	SW	WSW	W	W	W	W	W	SSW	S	S	S	SSW	SW	WSW	W	WNW	NW	NW	NW	NW	NW	WNW	WNW	WNW	WNW	WNW	WNW	WNW	NW			
Shell Crude	3	2	3	2	2	2	0	2	5	7	6	6	5	4	3	5	5	5	4	4	4	4	4	3	3	3	2	2	2	2	3	4	4	4	4	4	4			
	3	2	4	4	4	4	3	8	9	9	8	7	6	6	5	8	7	7	7	7	7	6	6	5	4	4	3	3	4	4	4	5	5	6	7	7	7			
	WNW	NE	ESE	E	ESE	E	ESE	SSW	SW	WSW	W	W	W	W	S	SSE	S	S	SSW	SW	WSW	W	WNW	WNW	NW	NW	NW	NW	WNW	WNW	WNW	WNW	WNW	WNW	WNW	WNW	WNW			
Lynchburg Ferries	3	2	3	3	2	2	0	2	5	6	6	5	5	4	3	6	6	5	5	5	5	4	4	4	3	3	2	3	3	3	4	4	4	5	5	5	5			
	3	2	4	4	4	4	3	8	9	9	8	7	6	6	5	9	8	7	7	7	7	6	6	5	5	4	4	4	4	4	4	5	5	6	7	7	7			
	SW	ENE	ESE	E	ESE	E	S	SW	WSW	W	W	W	W	WSW	SSE	SSE	S	S	SSW	SW	WSW	W	WNW	NW	NW	NW	NW	NW	WNW	WNW	WNW	WNW	WNW	WNW	WNW	WNW	NW			
Exxon 3	3	2	3	3	3	3	1	2	5	6	5	5	4	5	5	7	6	6	5	5	5	5	5	4	4	4	3	3	4	3	4	4	4	5	5	5	5			
	3	2	3	3	4	4	2	7	9	9	8	6	6	7	7	9	9	8	7	7	7	7	7	6	6	5	4	3	3	4	3	4	4	4	5	5	5			
	E	NE	ESE	ESE	SE	SE	ESE	S	SSW	SW	WSW	WSW	SW	SW	S	SSE	SSE	S	S	SSW	SW	WSW	W	W	WNW	NW	NW	NW	NW	NW	NW	NW	NW	NW	NW	WNW	WNW			
Morgans Point	2	2	2	3	4	3	1	2	4	5	5	5	5	6	8	8	8	7	6	6	6	6	6	5	5	4	4	4	4	4	4	5	4	5	5	5	5			
	4	2	4	4	5	4	2	6	9	9	8	7	7	9	11	11	10	9	8	8	8	8	8	7	7	6	5	5	6	5	6	6	6	6	6	7	7	7		
	ESE	SE	SE	SE	SSE	SSE	SE	S	SSW	SSW	S	SSE	SSE	SE	SE	SSE	SSE	S	S	SSW	SW	WSW	W	WNW	NW	NW	NW	NW	NW	NW	NW	NW	NW	NW	NW	NW	W			
75/76	3	1	2	3	4	3	2	3	4	5	6	8	8	9	10	10	11	9	8	7	8	8	8	8	7	6	6	6	5	6	6	6	6	6	6	6	6			
	6	3	5	4	5	4	3	6	9	8	8	8	9	12	13	12	12	11	9	8	9	9	9	8	8	8	7	6	6	6	6	6	6	6	6	6	6	8		
	S	SW	SSE	SSE	SSE	S	SSE	SSE	SSE	SE	SE	SE	SE	SE	SE	SSE	S	S	SSW	SSW	SW	SW	WSW	W	WNW	NW	NW	NW	NW	NW	NW	NW	NW	NW	NW	W	WSW	SSW		
63/64	3	1	3	3	4	3	2	1	2	3	5	7	8	9	10	11	11	10	8	8	8	8	8	8	7	6	6	6	5	6	6	6	6	6	6	6	6	6		
	6	3	5	4	5	5	4	5	8	8	8	8	10	12	12	12	12	11	10	9	9	9	9	8	8	7	6	6	6	6	6	6	6	6	6	6	6	6	7	
	S	SW	SSE	SSE	SSE	S	SSE	SE	SE	SE	SE	SE	SE	SE	SE	S	S	S	SSW	SSW	SSW	SW	WSW	W	WNW	NW	NW	NW	NW	NW	NW	NW	NW	NW	NW	NW	NW	W	S	
51/52	1	1	2	2	4	2	2	2	2	2	4	5	7	9	9	10	10	9	8	7	8	8	8	8	7	7	6	5	5	5	5	6	6	6	6	6	6	6		
	4	2	3	3	5	4	4	5	8	8	8	7	9	11	12	12	11	10	9	8	9	9	9	8	7	7	6	6	6	6	6	6	6	6	6	6	6	7	7	
	S	SSE	SE	SE	SSE	S	SSE	SE	SE	SE	SE	ESE	SE	SE	SSE	S	S	S	SSW	SSW	SSW	SW	SW	WSW	WSW	W	WNW	NW	NW	NW	NW	NW	NW	NW	NW	NW	NW	WNW	WNW	S
37/38	1	1	1	2	4	2	1	1	1	3	4	6	8	9	9	9	9	9	8	7	7	7	7	7	6	6	5	5	5	5	5	6	6	6	5	4	5	4		
	4	2	2	3	6	4	3	5	7	7	6	7	10	11	11	11	11	10	9	8	8	8	8	8	7	6	6	5	5	5	5	6	6	6	6	6	6	6	6	6
	SSW	SSE	SSE	SSE	S	SSE	SE	SSE	SSE	SSE	SE	SSE	SSE	SSE	S	S	S	S	SSW	SSW	SSW	SW	SW	WSW	WSW	W	WNW	WNW	NW	NW	NW	NW	NW	NW	NW	NW	NW	NW	SSE	
25/26	2	2	1	2	3	1	2	1	1	3	3	5	7	7	8	8	8	8	7	6	7	7	7	7	6	6	5	5	4	5	6	6	6	5	5	5	4	5	4	
	7	5	4	4	5	3	3	5	6	6	6	6	8	9	10	10	10	10	9	9	9	8	8	8	8	7	6	6	5	5	6	6	6	6	6	6	6	6	6	6
	SSW	SSW	SW	S	S	SSE	SE	SE	S	S	S	SSE	SSE	SSE	S	S	S	SSW	SSW	SSW	SW	SW	SW	WSW	WSW	W	W	WNW	NW	NW	NW	NW	NW	NW	NW	NW	NW	NW	SSW	
11/12	3	3	2	3	3	1	2	1	2	3	4	6	6	6	6	8	8	8	7	7	7	7	7	7	6	6	5	5	5	5	6	6	6	6	6	6	6	6		
	9	7	6	5	6	3	3	4	6	6	7	8	9	9	10	10	10	10	9	9	9	9	9	8	8	7	6	6	6	6	6	6	6	6	6	6	6	6	6	6
	S	SSW	WSW	SSW	S	SSE	ESE	ESE	SE	SSE	SSE	SSE	SSE	SSE	S	S	S	SSW	SSW	SSW	SW	SW	SW	WSW	WSW	W	W	WNW	NW	NW	NW	NW	NW	NW	NW	NW	NW	NW	WNW	WNW
1 & 2 Bravo	4	3	2	3	3	1	2	2	2	2	3	5	5	6	6	6	9	9	9	9	9	9	9	9	9	8	7	7	7	7	7	7	7	7	7	7	7	7	7	
	10	9	7	7	7	5	4	3	4	6	6	7	8	9	10	10	10	10	10	10	10	10	10	10	9	9	9	9	9	7	8	7	7	7	8	8	7	7	7	
	SSW	SSW	SW	S	S	SSE	ESE	ENE	E	SE	SE	SE	SSE	SSE	SSE	S	SSW	SSW	SSW	SSW	SW	SW	SW	WSW	WSW	W	W	WNW	WNW	NW	NW	NW	NW	NW	NW	NW	NW	NW	WNW	WSW

NOTE: This is automated data that may/may not agree with the official BAM thinking that's found on the daily slides. This data should be used as a guide only

# Houston Pilots: Thu. 10/19/2023



## Forecast Discussion

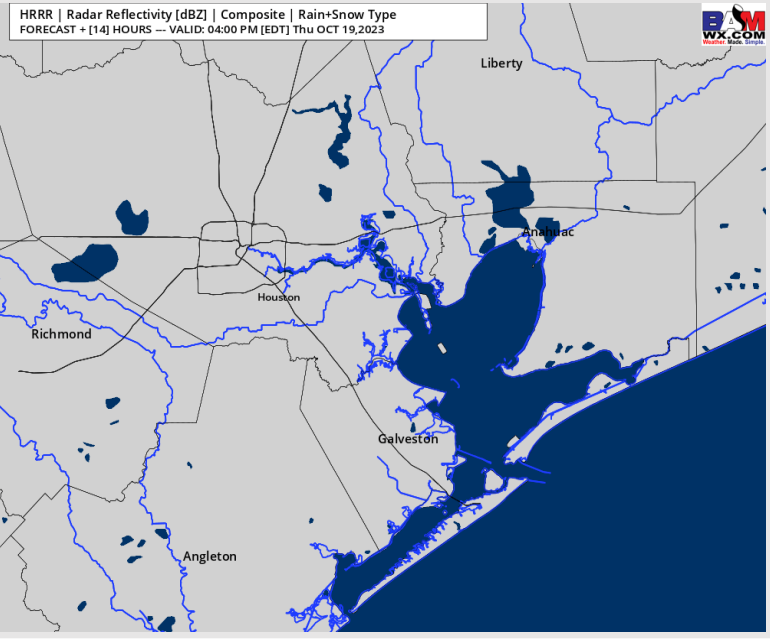
**Precip:** Favoring dry conditions today.

**Wind:** Winds will veer from the S to the SW throughout the AM hours before settling in from the WSW to SW by 2 PM as a weak front pushes into the region. **N of Morgan's Point** will be at 3 - 6 kts the entire day. Locations **S of Morgan's Point** will start at 3 - 7 kts in the AM and increase to 10 - 15 kts by 5 PM and continue through the remainder of the evening.

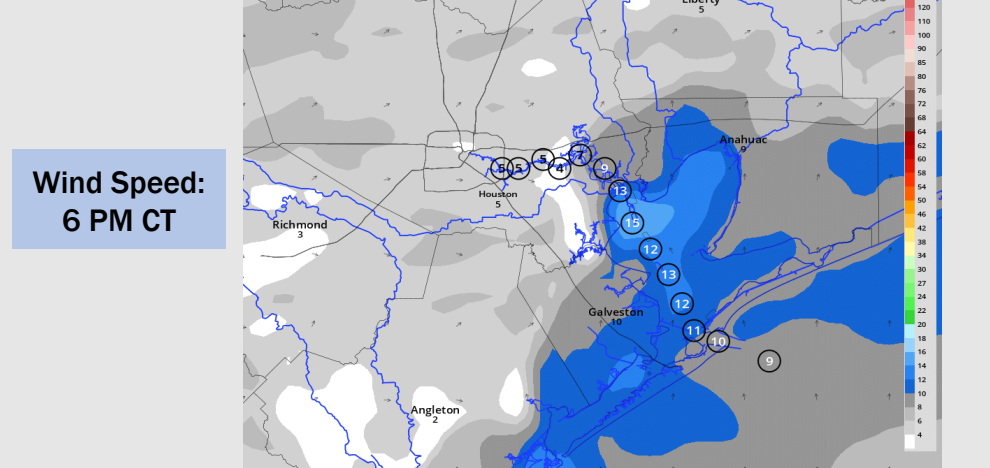
**High Temps:** Warmth continues to build back in. **N of Morgan's Point:** Mid to Upper 80's F. **S of Morgan's Point:** Upper 70's/near 80 F

**Visibility:** Not anticipating any visibility issues currently.

## Precip Image: 3 PM CT

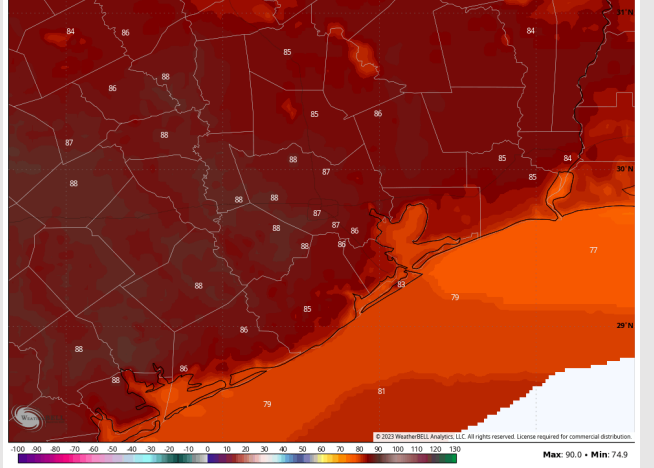


HRRR | 10-meter Wind Speed [mph] & Direction  
FORECAST + [17] HOURS -- VALID: 07:00 PM [EDT] Thu OCT 19, 2023



Wind Speed:  
6 PM CT

NDFD 2.5 km Init 04z 19 Oct 2023 • Daily Max. 2m Temperature (°F) Valid: Thu 19 Oct 2023



High Temps  
Today



# Houston Pilots: Fri. 10/20/2023



## Forecast Discussion

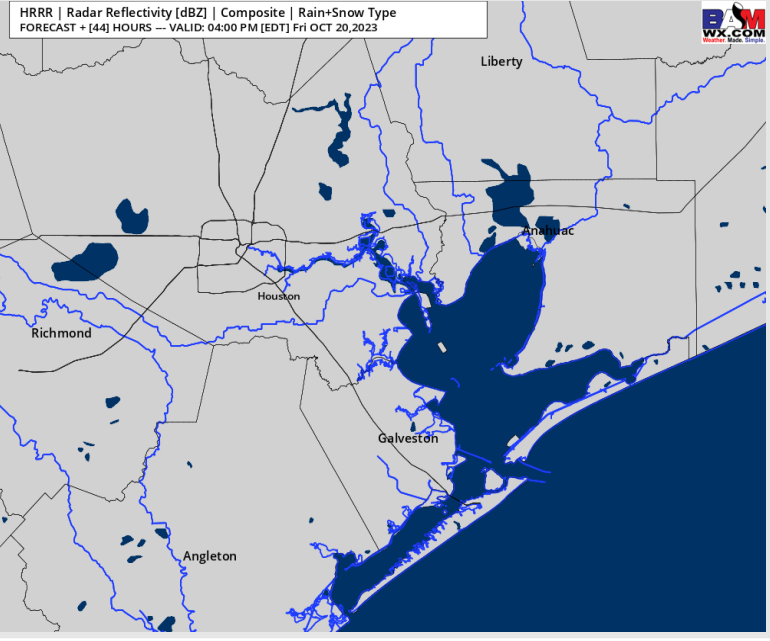
**Precip:** Anticipating dry conditions for Friday.

**Wind:** Anticipating winds out of the W before shifting to be out of the S/SW by 6 PM and remaining that way for the rest of the day. For Stations **N of Morgan's Point**, winds will be at 3-8 kts throughout the day Friday. For stations **S of Morgan's Point** 9 – 14 kts winds will be possible for the boarding station until 4 AM. Winds will then be 4 – 9 kts until 5 PM when winds will increase to 10 – 15 kts for the remainder of the evening.

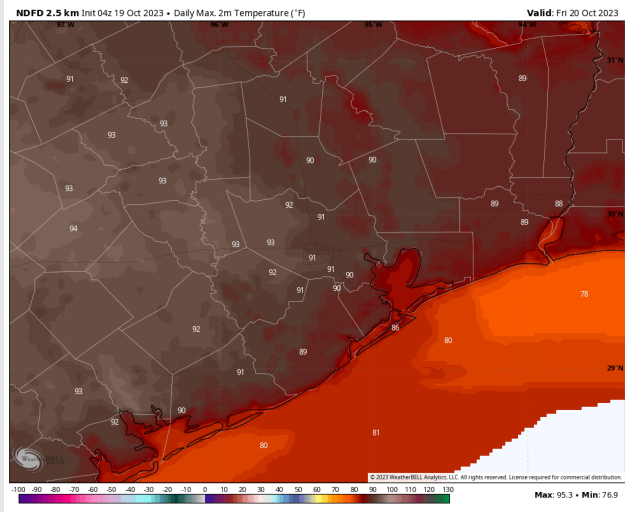
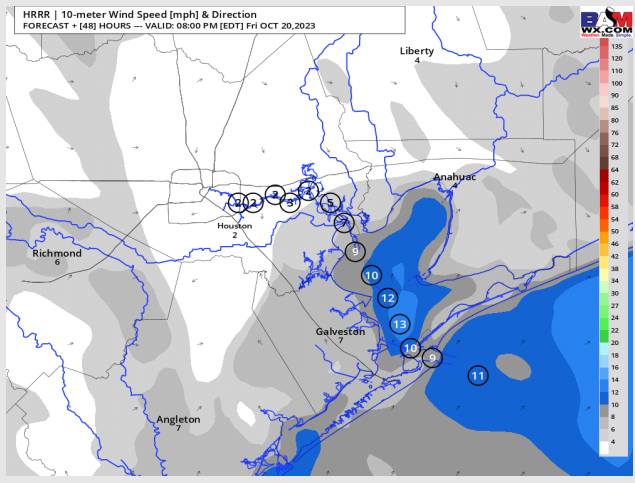
**High Temps:** **N of Morgan's Point:** Upper 80's F to Lower 90's F. **S of Morgan's Point:** Upper 70's/lower 80's F.

**Visibility:** Patchy Fog will be Possible for Shell Crude through 610 Bridge Station. Low-End risk for visibilities of 3-5 miles.

## Precip Image: 3 PM CT



Wind Speed:  
7 PM CT



High Temps  
Friday

# Houston Pilots: sat. 10/21/2023



## Forecast Discussion

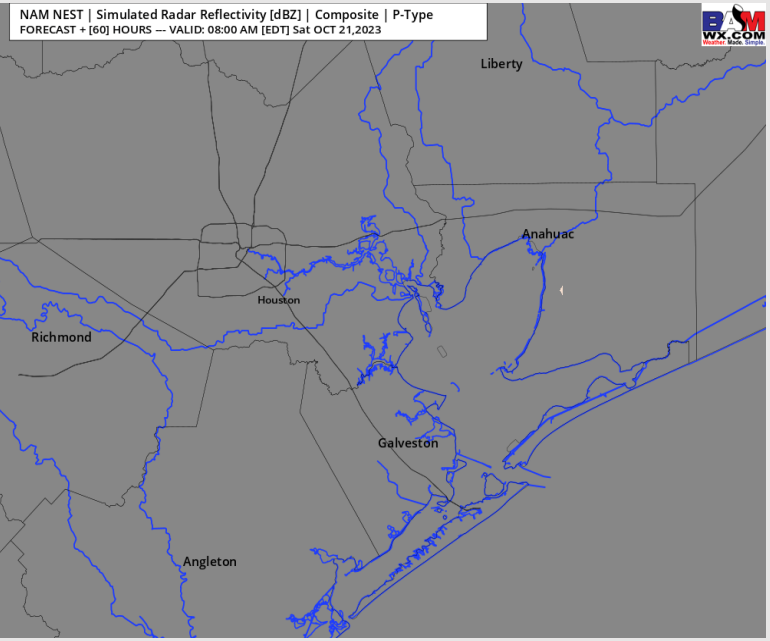
**Precip:** Favoring dry conditions throughout Saturday.

**Wind:** Winds will shift from the WSW during the AM to out of the S by 5PM. For Stations **N of Morgan's Point**, winds will be at 3-6 kts throughout the day. **S of Morgan's Point** will begin the day at 8-12 kts then decrease to 3 - 6 kts by 6 AM and remain there through 3PM, before increasing back to 8-12 kts for the remainder of the evening.

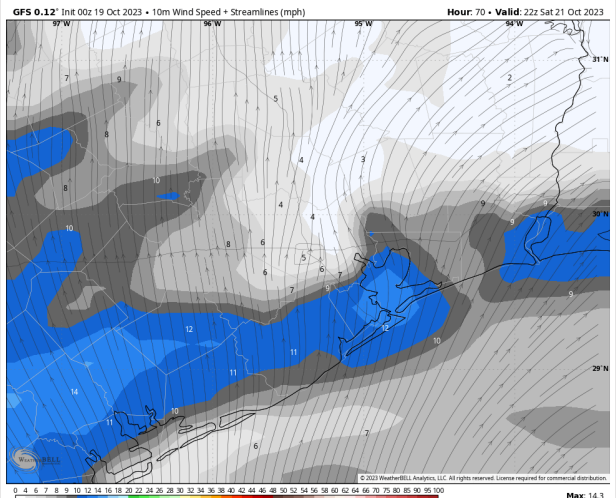
**High Temps:** **N of Morgan's Point:** Upper 80's F to Lower 90's F. **S of Morgan's Point:** Upper 70's/lower 80's F.

**Visibility:** Not anticipating any visibility issues currently.

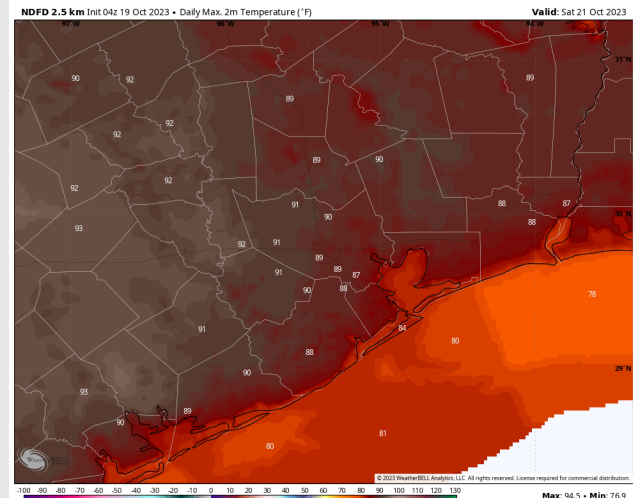
## Precip Image: 7 AM CT



Wind Speed:  
5 PM CT

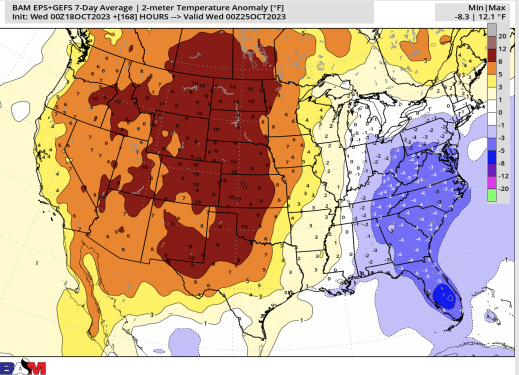


High Temps  
Saturday

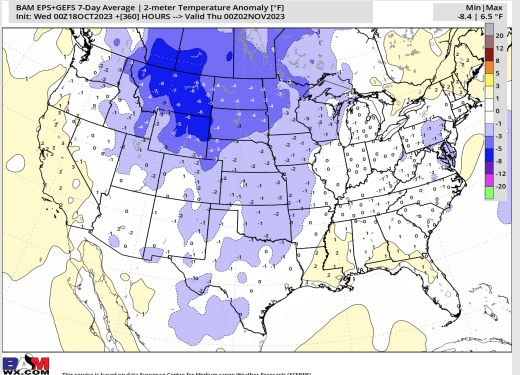


# Houston Pilots: 10/19/23

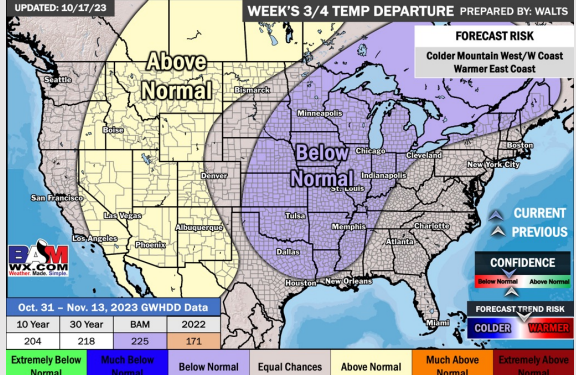
## Next 7 Day Temperature Departure



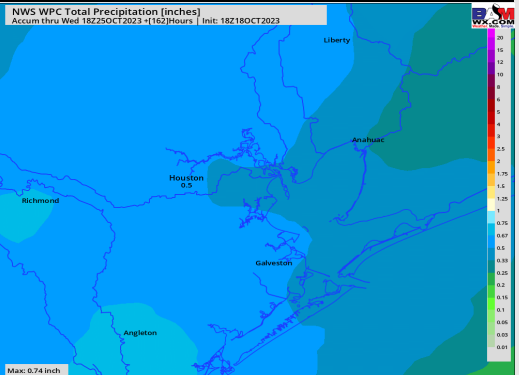
## 8-14 Day Temperature Departure



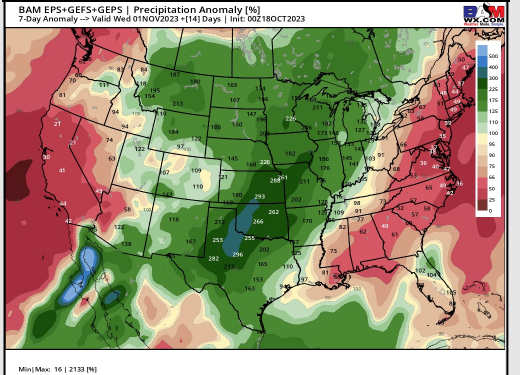
## 15-30 Day Temperature Departure



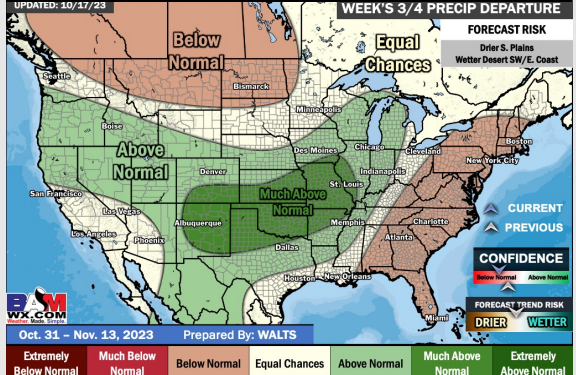
## Next 7 Day Total Precipitation



## 8-14 Day % of Average Precip.



## 15-30 Day % of Average Precip.



- A dry stretch will be upcoming the first half of the week. The next potential light rain chance would come Tuesday, but better chances move in Thursday. Temperatures are favored to remain above normal this week.
- Generally around average rainfall wise and near normal temperatures are expected into the week 2 timeframe.
- Near to below normal temperatures and normal chances for precipitation are favored in the weeks 3/4 timeframe.