

# Houston Pilots Forecast Package



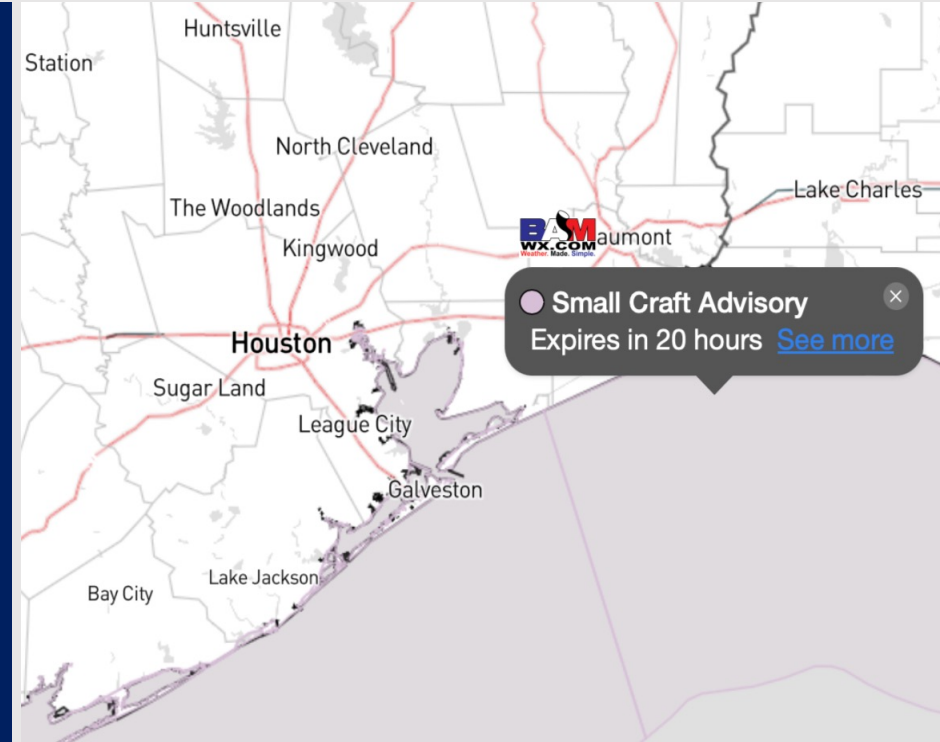
Updated: 1:55 PM CT

Sunday, October 15, 2023

Forecaster: Tyler Riggles

## Weather Headlines

- Dry conditions favored for the start of the week. Next potential rain chance would be Thursday via a cold front.
- Gustier winds will be possible today. Peak gusts in the range of 22 - 27 will be at play, especially in the early PM. **More details in slides below.**
- Not favoring any visibility concerns for the week at this time. Northerly winds will continue to keep the low levels of the atmosphere dry.



**Radar/NWS Alerts: 1:40 PM CT**



As always, please do not hesitate to reach out to us with any forecast questions via the chat option on the Weather Porthole or our on-call number, **(317)-560-8122** press 1 for forecast questions.

# Houston Pilots Visibility Chart (miles)



## Forecast Confidence



Time	Sun 1pm	Sun 2pm	Sun 3pm	Sun 4pm	Sun 5pm	Sun 6pm	Sun 7pm	Sun 8pm	Sun 9pm	Sun 10pm	Sun 11pm	Mon 12am	Mon 1am	Mon 2am	Mon 3am	Mon 4am	Mon 5am	Mon 6am	Mon 7am	Mon 8am	Mon 9am	Mon 10am	Mon 11am	Mon 12pm	Mon 1pm	Mon 2pm	Mon 3pm	Mon 4pm	Mon 5pm	Mon 6pm	Mon 7pm	Mon 8pm	Mon 9pm	Mon 10pm	Mon 11pm	Tue 12am					
610 Bridge	10	10	10	10	10	10	10	10	10	10	10	10	10	10	10	10	10	10	10	10	10	10	10	10	10	10	10	10	10	10	10	10	10	10	10	10	10	10	10		
Kinder 1	10	10	10	10	10	10	10	10	10	10	10	10	10	10	10	10	10	10	10	10	10	10	10	10	10	10	10	10	10	10	10	10	10	10	10	10	10	10	10	10	
Greens Bayou	10	10	10	10	10	10	10	10	10	10	10	10	10	10	10	10	10	10	10	10	10	10	10	10	10	10	10	10	10	10	10	10	10	10	10	10	10	10	10	10	
Shell Crude	10	10	10	10	10	10	10	10	10	10	10	10	10	10	10	10	10	10	10	10	10	10	10	10	10	10	10	10	10	10	10	10	10	10	10	10	10	10	10	10	10
Lynchburg Ferries	10	10	10	10	10	10	10	10	10	10	10	10	10	10	10	10	10	10	10	10	10	10	10	10	10	10	10	10	10	10	10	10	10	10	10	10	10	10	10	10	10
Exxon 3	10	10	10	10	10	10	10	10	10	10	10	10	10	10	10	10	10	10	10	10	10	10	10	10	10	10	10	10	10	10	10	10	10	10	10	10	10	10	10	10	10
Morgans Point	10	10	10	10	10	10	10	10	10	10	10	10	10	10	10	10	10	10	10	10	10	10	10	10	10	10	10	10	10	10	10	10	10	10	10	10	10	10	10	10	10
75/76	10	10	10	10	10	10	10	10	10	10	10	10	10	10	10	10	10	10	10	10	10	10	10	10	10	10	10	10	10	10	10	10	10	10	10	10	10	10	10	10	10
63/64	10	10	10	10	10	10	10	10	10	10	10	10	10	10	10	10	10	10	10	10	10	10	10	10	10	10	10	10	10	10	10	10	10	10	10	10	10	10	10	10	10
51/52	10	10	10	10	10	10	10	10	10	10	10	10	10	10	10	10	10	10	10	10	10	10	10	10	10	10	10	10	10	10	10	10	10	10	10	10	10	10	10	10	10
37/38	10	10	10	10	10	10	10	10	10	10	10	10	10	10	10	10	10	10	10	10	10	10	10	10	10	10	10	10	10	10	10	10	10	10	10	10	10	10	10	10	10
25/26	10	10	10	10	10	10	10	10	10	10	10	10	10	10	10	10	10	10	10	10	10	10	10	10	10	10	10	10	10	10	10	10	10	10	10	10	10	10	10	10	10
11/12	10	10	10	10	10	10	10	10	10	10	10	10	10	10	10	10	10	10	10	10	10	10	10	10	10	10	10	10	10	10	10	10	10	10	10	10	10	10	10	10	10
1 & 2 Bravo	10	10	10	10	10	10	10	10	10	10	10	10	10	10	10	10	10	10	10	10	10	10	10	10	10	10	10	10	10	10	10	10	10	10	10	10	10	10	10	10	10

**NOTE: This is automated data that may/may not agree with the official BAM thinking that's found on the daily slides or special visibility report slides. This data should be used as a guide only**

# Houston Pilots Wind Chart



## Forecast Confidence



## Example

Sustained wind 13 Knots  
Gusts 18 Knots  
Wind from the N

WS: 13  
G:18  
N

Time Knots	Sun 1pm	Sun 2pm	Sun 3pm	Sun 4pm	Sun 5pm	Sun 6pm	Sun 7pm	Sun 8pm	Sun 9pm	Sun 10pm	Sun 11pm	Mon 12am	Mon 1am	Mon 2am	Mon 3am	Mon 4am	Mon 5am	Mon 6am	Mon 7am	Mon 8am	Mon 9am	Mon 10am	Mon 11am	Mon 12pm	Mon 1pm	Mon 2pm	Mon 3pm	Mon 4pm	Mon 5pm	Mon 6pm	Mon 7pm	Mon 8pm	Mon 9pm	Mon 10pm	Mon 11pm	Tue 12am	
610 Bridge	12	12	12	12	11	10	6	6	6	5	5	5	4	5	6	7	7	6	6	7	8	9	9	10	10	10	10	9	9	9	8	6	5	5	4	3	
	18	20	19	19	18	18	15	13	12	11	10	10	10	10	11	13	10	10	10	9	11	12	14	15	15	15	15	14	14	14	13	12	9	9	7	7	5
	N	NNW	NNW	N	N	N	NNW	NNW	NNW	NNW	N	SSE	SSW	NNW	N	N	N	N	N	N	N	N	ENE	NW	N	N	N	NNW	NNW	NNW	N	N	N	N	N	N	N
Kinder 1	12	13	12	12	11	10	6	5	5	5	5	5	4	5	5	7	6	6	6	7	8	9	9	9	10	9	9	9	9	8	6	5	5	4	3		
	18	20	19	19	18	17	15	12	11	11	11	10	10	10	10	13	10	10	10	9	11	12	14	14	14	15	14	14	14	13	12	9	8	7	7	5	
	N	NNW	NNW	N	N	N	NNW	NNW	NNW	NNW	N	ENE	SW	NNW	N	N	N	N	N	N	N	N	ENE	NNW	N	N	N	NNW	NNW	NNW	N	N	N	N	NNW	N	N
Greens Bayou	12	13	12	12	11	9	5	5	5	4	5	5	4	4	5	7	6	6	6	7	8	9	9	10	10	9	9	9	9	8	6	5	5	4	3		
	19	19	19	19	18	17	15	12	11	11	11	11	10	10	12	10	10	10	9	9	11	12	13	14	14	15	14	14	14	14	13	12	9	8	7	6	5
	N	NNW	NNW	N	N	N	NNW	NNW	N	N	NNE	WNW	NNW	N	N	N	N	N	N	N	N	N	SSE	N	N	N	N	NNW	NNW	NNW	N	N	N	NNW	NNW	N	N
Shell Crude	12	13	12	12	11	9	5	5	5	4	5	5	4	5	5	7	7	7	7	6	7	8	9	9	10	10	9	9	9	8	6	5	5	4	3		
	19	19	19	19	18	17	16	14	12	11	12	12	11	12	11	12	11	10	10	10	11	12	13	14	14	14	14	14	14	13	11	9	8	7	7	6	
	N	N	NNW	N	N	N	NNW	NNW	N	NNW	N	ENE	SW	NNW	N	N	N	N	N	N	N	N	S	N	N	N	N	NNW	NNW	NNW	N	N	N	NNW	NNW	N	N
Lynchburg Ferries	13	13	12	12	11	9	5	6	5	5	5	5	4	5	4	8	7	7	7	7	7	9	9	10	10	10	10	10	10	10	8	6	6	5	5	4	
	19	19	19	18	18	17	16	14	12	12	12	12	11	12	11	11	10	10	10	10	10	12	13	14	14	14	14	14	14	13	11	9	8	7	7	6	
	N	N	NNW	NNW	N	N	N	NNW	NNW	N	WSW	SSE	NNW	NNW	NNW	N	N	N	N	N	N	N	WNW	NNW	N	N	N	NNW	NNW	NNW	N	N	NNW	NNW	NNW	N	N
Exxon 3	13	13	13	12	11	9	5	5	5	5	5	5	5	5	5	9	8	8	8	8	8	9	10	10	10	10	10	10	10	8	7	6	6	5	5		
	19	19	19	19	18	17	16	16	16	16	16	15	15	16	14	12	12	11	11	11	11	13	14	14	14	14	14	14	15	13	11	10	9	8	7	7	
	NNW	NNW	NNW	NNW	N	N	NNW	N	N	WSW	SW	NNW	NNW	N	N	N	N	N	N	N	N	N	NW	N	N	N	N	NNW	NNW	NNW	N	N	NNW	NNW	NNW	N	N
Morgans Point	14	14	13	13	12	10	7	7	7	7	8	7	7	8	8	11	11	10	10	10	10	11	11	11	11	11	11	11	12	13	12	10	9	8	7	7	
	20	20	19	19	18	17	16	18	18	19	20	19	19	21	18	14	14	13	13	13	14	14	14	14	14	15	15	15	16	14	13	11	10	9	8	8	
	NNW	NNW	NNW	NNW	N	N	NNW	N	N	NW	E	WSW	N	N	N	N	N	N	N	N	N	N	S	NNW	N	N	N	NNW	NNW	NNW	N	N	NNW	NNW	N	NNW	
75/76	16	17	16	16	16	14	13	12	12	13	14	13	13	14	15	15	15	15	15	14	14	13	13	12	12	12	12	13	13	15	14	13	12	11	10	9	
	21	21	20	20	20	19	18	18	19	20	22	20	21	22	22	17	17	17	16	16	16	16	15	15	15	15	16	16	16	17	16	15	14	12	11	11	
	NNW	NNW	NNW	NNW	N	N	N	N	N	WNW	S	N	NE	SW	SW	NW	NW	WNW	WNW	NW	N	NNE	SSW	N	N	N	NNW	NNW	NNW	NNW	N	N	N	N	N	S	
63/64	18	19	18	18	18	17	16	16	16	16	18	17	18	18	19	18	18	18	18	17	17	16	15	14	13	12	13	14	14	15	15	14	13	12	12	11	10
	23	22	20	21	21	19	20	20	19	20	22	20	22	22	23	19	19	19	19	19	18	17	17	16	15	15	15	16	16	16	16	15	14	13	13	12	11
	NNW	NNW	NNW	NNW	N	N	N	N	N	SE	ENE	NNE	N	NNE	NNE	E	E	ENE	ENE	E	ENE	N	NE	N	N	N	NNW	NNW	NNW	NNW	N	N	N	N	N	WSW	N
51/52	18	19	19	19	18	18	18	18	18	18	18	17	19	19	19	18	18	18	18	17	17	16	15	14	13	13	13	14	14	14	13	12	12	11	11	11	
	23	22	21	22	21	20	21	20	20	21	19	22	22	22	19	19	19	19	19	18	17	17	15	15	15	16	15	15	16	16	15	14	13	12	12	12	
	NNW	NNW	NNW	NNW	N	N	N	N	N	N	NNE	N	N	N	N	N	N	N	N	N	N	N	N	N	N	N	NNW	NNW	NNW	NNW	N	N	N	N	NNW	E	N
37/38	18	19	19	19	19	18	19	19	18	18	18	17	19	19	20	18	18	17	17	16	16	15	14	14	13	13	13	13	14	14	13	13	11	11	10	10	
	23	23	22	22	21	20	21	21	20	21	19	21	21	22	19	19	19	19	19	18	18	17	16	16	15	15	15	15	15	14	14	12	12	11	11	11	
	NNW	NNW	NNW	NNW	N	N	N	N	N	N	N	NNE	N	N	N	N	N	N	N	N	N	N	N	N	N	N	N	NNW	NNW	NNW	NNW	N	N	N	SSW	NNE	NNE
25/26	17	19	19	19	18	17	18	18	17	17	17	15	17	18	18	16	16	16	16	16	15	15	14	13	13	13	13	13	13	12	12	11	10	10	9	9	
	21	23	22	22	21	21	21	20	20	20	20	19	20	21	21	18	18	18	18	17	17	16	15	15	15	15	15	14	14	14	13	13	11	11	11	10	
	NNW	NNW	NNW	NNW	N	N	N	NNW	N	N	N	NNE	N	N	N	N	N	N	N	N	N	N	N	N	N	N	NNW	NNW	NNW	NNW	N	N	N	N	ESE	NNE	NNE
11/12	17	18	18	18	17	17	16	15	16	15	15	14	15	17	16	16	15	15	15	15	15	15	14	13	13	12	12	12	12	12	11	10	10	9	10		
	20	23	22	22	21	21	20	19	20	20	20	19	20	22	21	18	18	17	17	17	17	16	15	15	14	14	14	14	14	14	13	13	11	11	11	11	
	NNW	NNW	NNW	NNW	NNW	N	NNW	NNW	N	N	N	NNE	N	N	N	N	N	N	N	N	N	N	N	N	N	N	N	NNW	NNW	NNW	NNW	N	N	N	NNE	N	NNE
1 & 2 Bravo	18	20	20	21	19	19	18	18	18	19	18	18	19	20	20	19	19	19	19	18	17	16	15	14	13	12	12	13	13	14	13	13	12	12	12		
	20	22	22	23	21	20	19	19	19	21	19	19	21	22	22	22	21	21	21	20	19	18	16	15	14	14	13	14	14	15	15	14	13	13	13	13	
	NNW	NNW	NNW	NNW	NNW	NNW	N	N	N	N	N	NNE	N	N	N	N	N	N	N	N	N	N	N	N	N	N	NNW	NNW	NNW	NNW	NNW	N	N	N	N	N	N

NOTE: This is automated data that may/may not agree with the official BAM thinking that's found on the daily slides. This data should be used as a guide only

## Forecast Discussion

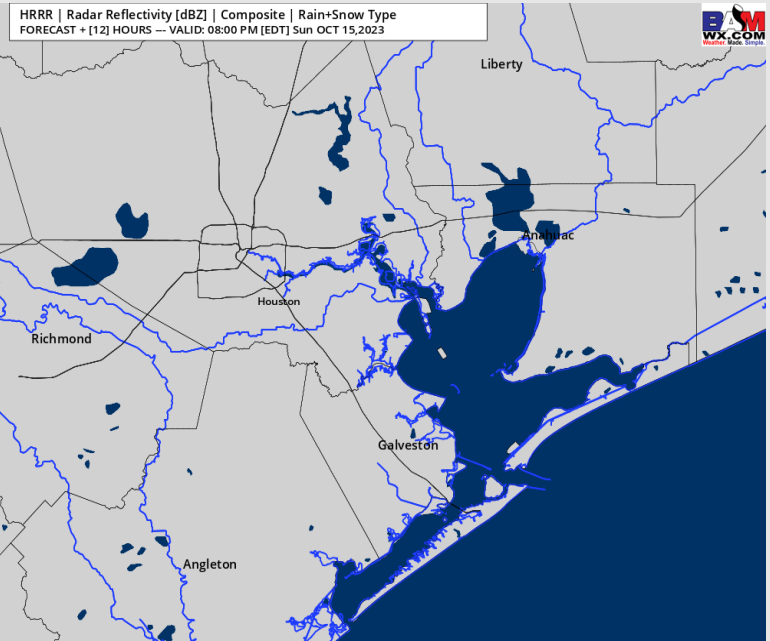
**Precip:** Favoring dry conditions for all locations today.

**Wind:** Winds will be out of the N/NNW throughout the day. For Stations **N of Morgan's Point**, winds will be at 11 - 16 kts through 6 PM. After 6 PM winds again return to 5 -10 kts. Winds **S of Morgan's Point** will be 19- 24 kts throughout the day. Winds at the Boarding Station and 11/12 can top out a touch higher to 26 kts from 3 -6 PM. **Wind gusts of 23 -28 kts will be possible S of Morgan's Point throughout the day Sunday. Stations N of Morgan's Point can expect gusts of the same intensity though 6 PM.**

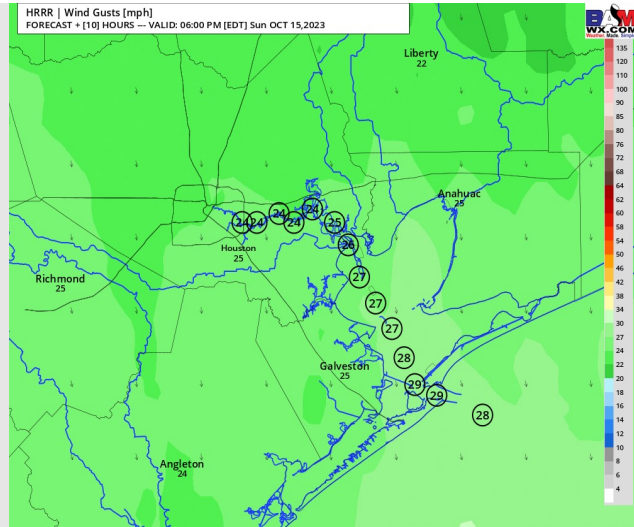
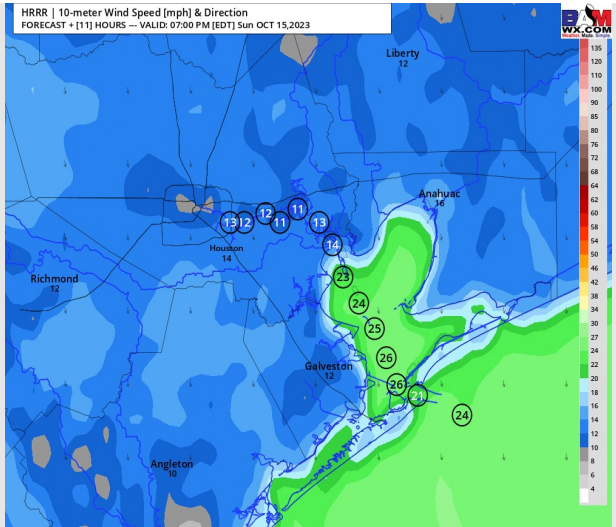
**Low Temps MON AM:** **N of Morgan's Point:** Low 50s. **S of Morgan's Point:** Low 60's.

**Visibility:** Not anticipating any visibility issues at this time.

## Precip Image: 7 PM CT



Wind Speed:  
6 PM CT



Peak Wind Gusts  
~5 PM CT



## Forecast Discussion

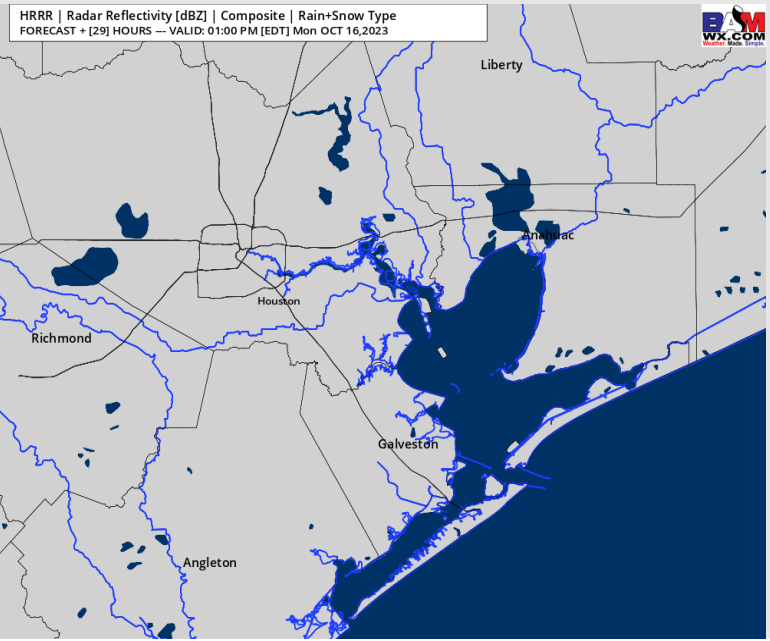
**Precip:** Dry conditions expected into Monday.

**Wind:** N/NNW winds persist for Monday. Sustained winds for locations **N of Morgan's Point** will start at 4 - 9 kts and increase from 10 AM - 12 PM to 8 - 13 kts through 6 PM. After 6 PM winds subside to 3 - 8 kts. Locations **S of Morgan's Point** winds will start at 17-22 kts in the early AM and slowly decrease to 14 - 19 kts by 10 AM. Winds remain at this speed for the rest of the PM.

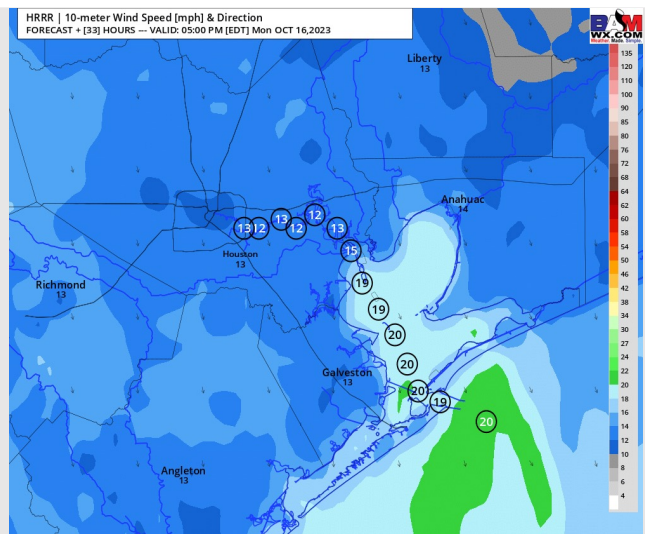
**High Temps:** **N of Morgan's Point:** Low 70s F. **S of Morgan's Point:** Near 70/Low 70s F.

**Visibility:** Not anticipating any visibility issues currently.

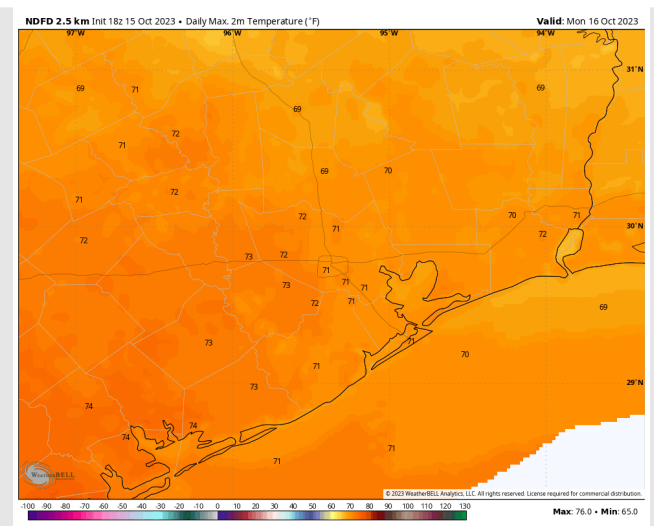
## Precip Image: 12 PM CT



**Wind Speed:**  
4 PM CT



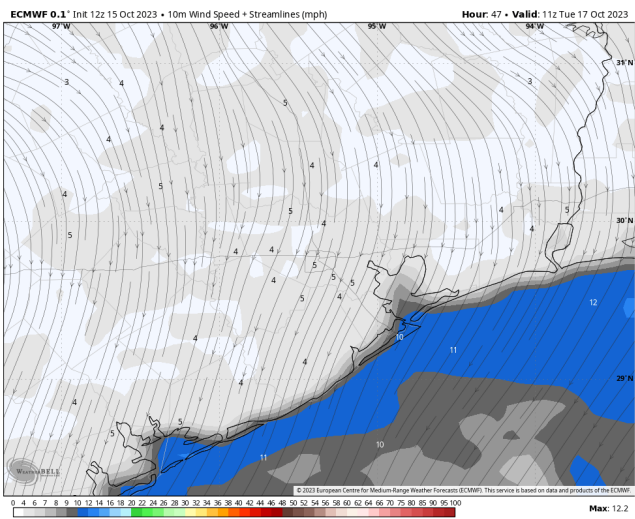
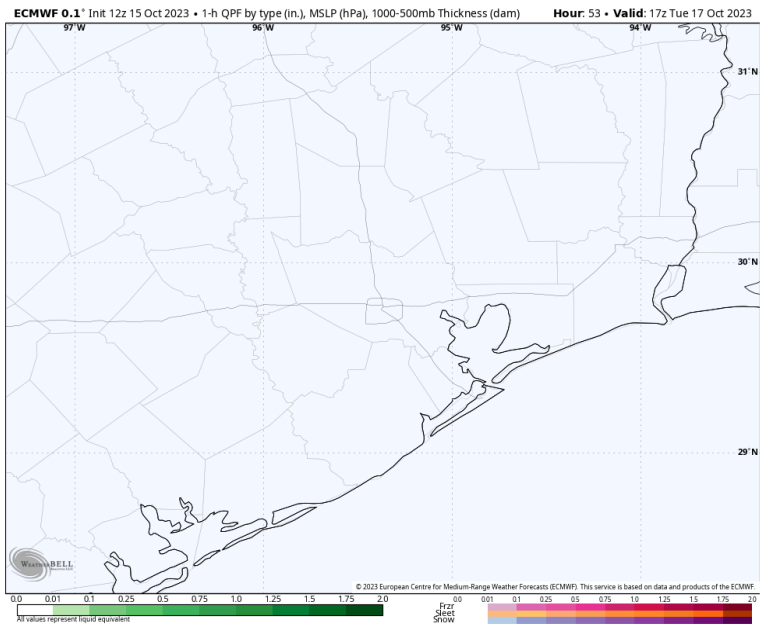
**High Temps**  
**Monday**



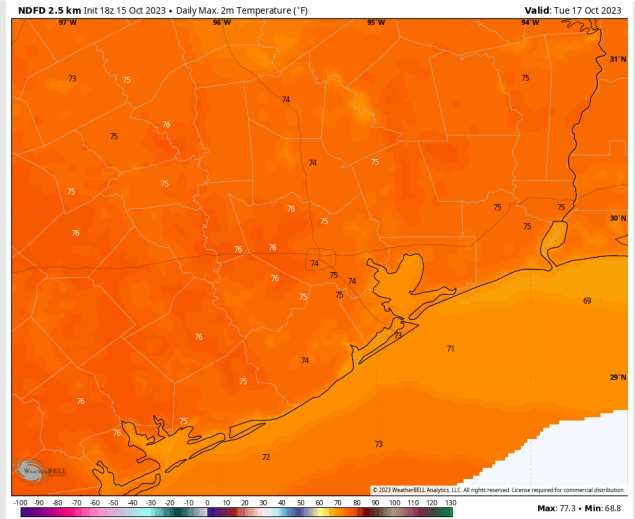
## Forecast Discussion

- Precip:** Anticipating dry conditions for Tuesday.
- Wind:** Winds out of the N will gradually rotate clockwise out of the S/SE by 3 PM. For Stations **N of Morgan's Point**, winds will be at 2-7 kts throughout the day. Winds of 7-12 kts **S of Morgan's Point** will gradually calm to 3-8 kts by 10 AM and remain at that clip for the rest of the day.
- High Temps:** **N of Morgan's Point:** Mid 70s F. **S of Morgan's Point:** Low 70's F.
- Visibility:** Not anticipating any visibility concerns at this time.

## Precip Image: 12 PM CT

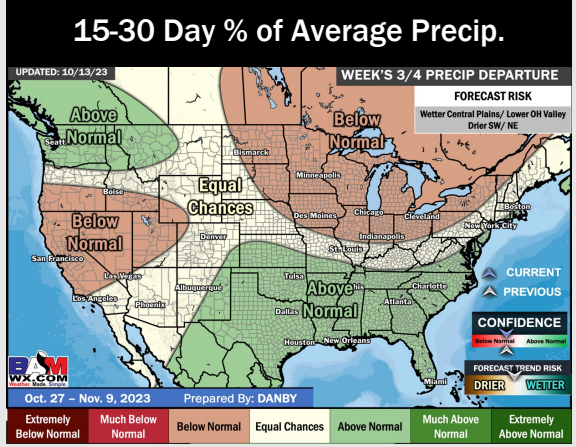
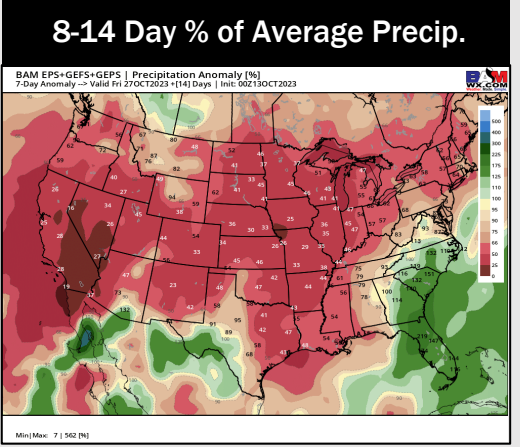
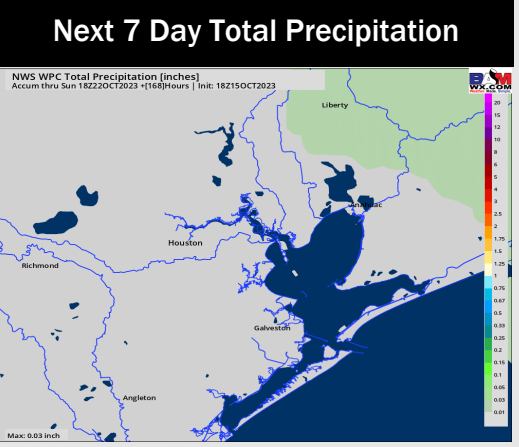
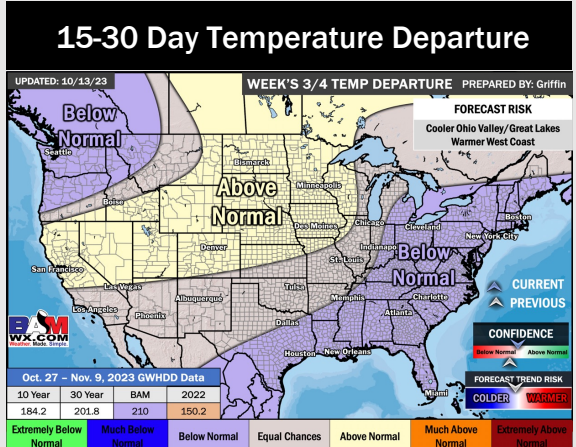
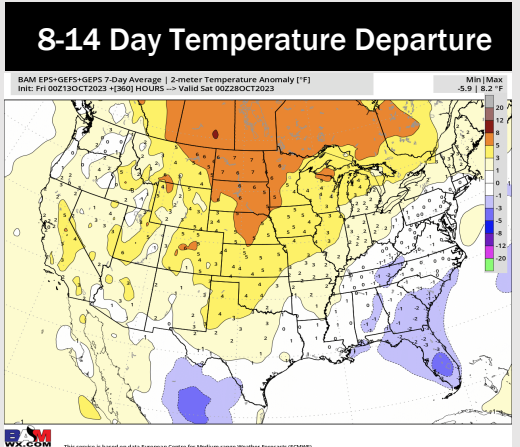
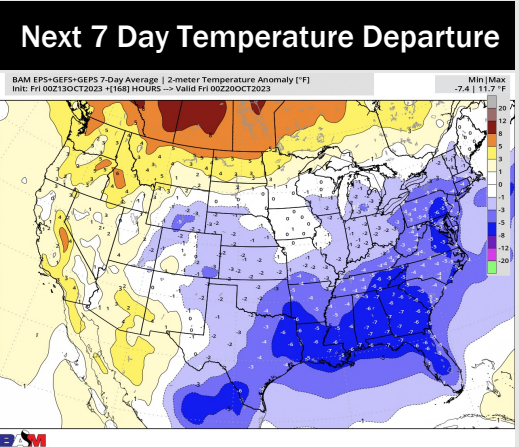


Wind Speed:  
6 AM CT



High Temps  
Tuesday

# Houston Pilots: 10/15/23



- A dry stretch will be upcoming this week. The next potential rain chance would come Thursday via a cold front, but better rain chances look to remain to the NE. Temperatures are favored to remain below normal this week.
- Generally drier and average temperatures are expected into the week 2 timeframe.
- Below normal temperatures and above normal chances for precipitation are favored in the weeks 3/4 timeframe.