

# Houston Pilots Forecast Package



Updated: 8:30 PM CT

Sunday, October 29, 2023

Forecaster: Jonathan Kipper

## Weather Headlines

- With increased wind heights, increased wave heights of 5-7 ft will be possible over the next couple of days. Check out the slide below for thinking on timing with wave height impacts.
- Greatest precipitation chances come MON/ TUE with the passing of a cold front.
- As the cold front passes, temperatures will drop and gusty winds will push in from the North.
- Elevated winds anticipated on MON and TUE as a result. Check slides below for more info.
- Visibility concerns will not be an issue rolling forward over the next 72+ hours.



**Radar/NWS Alerts: 8:15 PM CT**

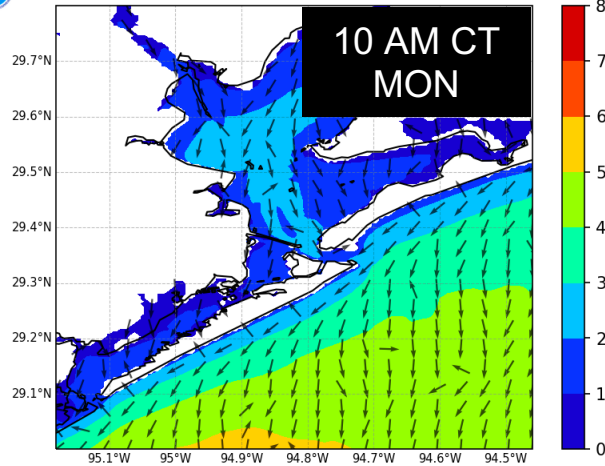


As always, please do not hesitate to reach out to us with any forecast questions via the chat option on the Weather Porthole or our on-call number, **(317)-560-8122** press 1 for forecast questions.

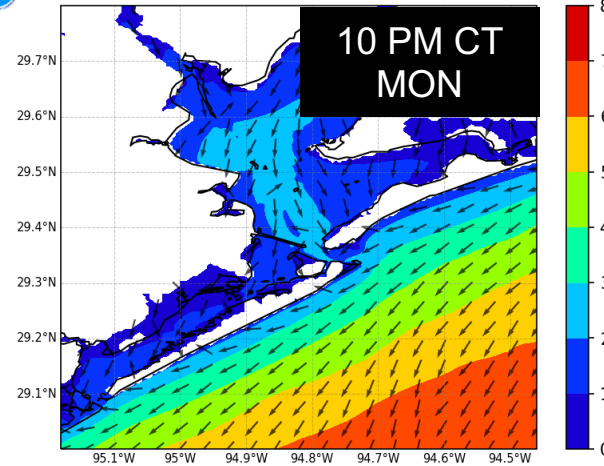
# Houston Pilots Tropical Update

## Significant Wave Height 4-Panel

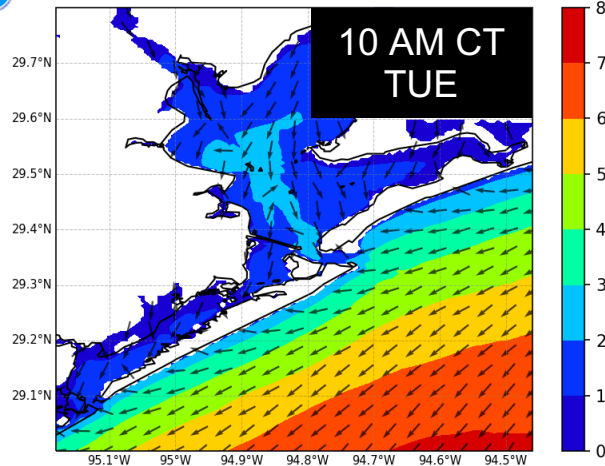
NWPS Significant Wave Height (ft) and Peak Wave Direction  
Hour 33 (15Z30OCT2023)



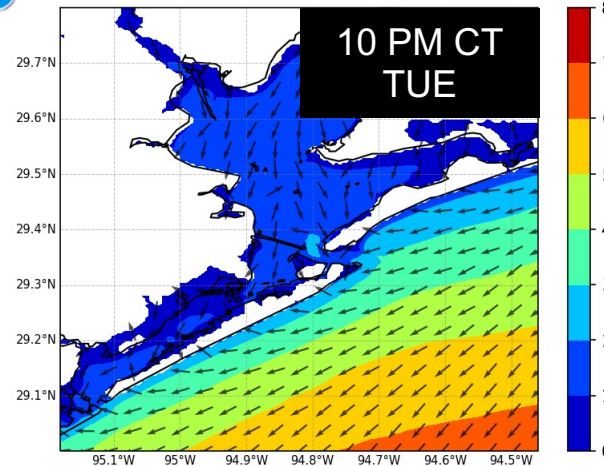
NWPS Significant Wave Height (ft) and Peak Wave Direction  
Hour 45 (03Z31OCT2023)



NWPS Significant Wave Height (ft) and Peak Wave Direction  
Hour 57 (15Z31OCT2023)



NWPS Significant Wave Height (ft) and Peak Wave Direction  
Hour 69 (03Z01NOV2023)



Increasing winds out of the northwest will locally increase max wave heights on Monday morning after 9AM-CT for the boarding station of 3-4 feet.

Lower confidence on the exact timing given the progression of the front and limited model data.

Best timing to see max wave heights of 5 to 7 between 10 PM MON and 10 PM TUE.

# Houston Pilots Visibility Chart (miles)



Time	Sun 7pm	Sun 8pm	Sun 9pm	Sun 10pm	Sun 11pm	Mon 12am	Mon 1am	Mon 2am	Mon 3am	Mon 4am	Mon 5am	Mon 6am	Mon 7am	Mon 8am	Mon 9am	Mon 10am	Mon 11am	Mon 12pm	Mon 1pm	Mon 2pm	Mon 3pm	Mon 4pm	Mon 5pm	Mon 6pm	Mon 7pm	Mon 8pm	Mon 9pm	Mon 10pm	Mon 11pm	Tue 12am	Tue 1am	Tue 2am	Tue 3am	Tue 4am	Tue 5am	Tue 6am
610 Bridge	10	10	10	10	10	10	10	10	10	10	10	10	10	10	10	10	7	6	5	4	4	4	4	5	8	10	10	10	10	10	10	10	10	10	10	10
Kinder 1	10	10	10	10	10	10	10	10	10	10	10	10	10	10	10	10	8	6	5	5	5	5	5	5	8	10	10	10	10	10	10	10	10	10	10	10
Greens Bayou	10	10	10	10	10	10	10	10	10	10	10	10	10	10	10	10	8	7	7	7	6	8	7	7	8	9	10	10	10	10	10	10	10	10	10	10
Shell Crude	10	10	10	10	10	10	10	10	10	10	10	10	10	10	10	10	8	8	9	8	9	10	8	8	8	10	10	10	10	10	10	10	10	10	10	10
Lynchburg Ferries	10	10	10	10	10	10	10	10	10	10	10	10	10	10	10	10	8	8	9	8	9	10	8	8	8	8	10	10	10	10	10	10	10	10	10	10
Exxon 3	10	10	10	10	10	10	10	10	10	10	10	10	10	10	10	10	8	8	9	8	9	10	8	8	8	8	10	10	10	10	10	10	10	10	10	10
Morgans Point	10	10	10	10	10	10	10	10	10	10	10	10	10	10	10	10	8	8	9	8	9	10	9	8	8	10	10	10	10	10	10	10	10	10	10	10
75/76	10	10	10	10	10	10	10	10	10	10	10	10	10	10	10	10	8	8	10	8	9	10	10	8	8	10	10	10	10	10	10	10	10	10	10	10
63/64	10	10	10	10	10	10	10	10	10	10	10	10	10	10	10	10	8	8	10	8	9	10	10	8	8	10	10	10	10	10	10	10	10	10	10	10
51/52	10	10	10	10	10	10	10	10	10	10	10	10	10	10	10	10	8	8	10	8	9	10	10	8	8	10	10	10	10	10	10	10	10	10	10	10
37/38	10	10	10	10	10	10	10	10	10	10	10	10	10	10	10	10	8	8	10	8	9	8	10	8	8	10	10	10	10	10	10	10	10	10	10	10
25/26	10	10	10	10	10	10	10	10	10	10	10	10	10	10	10	10	8	8	9	8	9	8	10	8	8	8	10	10	10	10	10	10	10	10	10	10
11/12	10	10	10	10	10	10	10	10	10	10	10	10	10	10	10	10	8	8	9	8	9	8	10	8	8	8	10	10	10	10	10	10	10	10	10	10
1 & 2 Bravo	10	10	10	10	10	10	10	10	10	10	10	10	10	7	6	6	8	8	9	8	9	8	9	8	8	8	10	10	10	10	10	10	10	10	10	9

NOTE: This is automated data that may/may not agree with the official BAM thinking that’s found on the daily slides or special visibility report slides. This data should be used as a guide only

# Houston Pilots Wind Chart



Forecast Confidence

Above Normal

Below Normal

Sustained wind 13 Knots  
Gusts 18 Knots  
Wind from the N

Example

WS: 13  
G:18  
N

Time Knots	Sun 7pm	Sun 8pm	Sun 9pm	Sun 10pm	Sun 11pm	Mon 12am	Mon 1am	Mon 2am	Mon 3am	Mon 4am	Mon 5am	Mon 6am	Mon 7am	Mon 8am	Mon 9am	Mon 10am	Mon 11am	Mon 12pm	Mon 1pm	Mon 2pm	Mon 3pm	Mon 4pm	Mon 5pm	Mon 6pm	Mon 7pm	Mon 8pm	Mon 9pm	Mon 10pm	Mon 11pm	Tue 12am	Tue 1am	Tue 2am	Tue 3am	Tue 4am	Tue 5am	Tue 6am	
610 Bridge	6	10	10	10	10	10	10	10	10	10	10	11	11	11	11	10	16	16	16	16	16	15	15	16	15	14	14	13	12	12	11	11	10	11	11	11	11
	WSW	NNW	NNW	N	NNW	NNW	N	NNW	NNW	NNW	NNW	N	N	N	WSW	N	N	N	N	N	N	N	N	N	N	WNW	S	E	SSE	NNW	N	NNW	SSE	NNE	NW	NW	
Kinder 1	5	10	10	11	10	10	10	10	10	10	11	11	11	11	11	16	16	15	16	16	15	15	16	15	14	14	13	13	12	11	11	10	10	11	12	12	
	SSW	NNW	NNW	NNW	NNW	NNW	NNW	NNW	NNW	NNW	NNW	N	N	N	W	N	N	N	N	N	N	N	N	N	N	WNW	SSW	ENE	NNE	ENE	W	WNW	NW	W	E	N	SW
Greens Bayou	5	10	10	11	10	10	11	10	11	10	11	11	12	11	11	15	16	15	16	16	15	15	16	15	14	14	13	13	12	11	11	10	11	11	12	12	
	SE	NNW	NNW	NNW	N	NNW	NNW	N	NNW	NNW	NNW	N	N	N	N	N	N	N	N	N	N	N	N	N	SSE	ESE	N	N	ESE	SSE	S	ESE	N	N	ENE	N	ENE
Shell Crude	5	9	10	11	10	10	11	11	10	10	11	11	12	11	11	15	15	15	16	16	15	15	16	15	15	14	14	13	12	11	11	11	11	11	12	12	12
	ESE	NW	NNW	NNW	N	NNW	NNW	N	NNW	NNW	NNW	N	N	N	NNW	N	N	N	N	N	N	N	N	N	N	E	NNE	N	N	N	NNE	NE	N	N	N	N	N
Lynchburg Ferries	5	9	10	11	11	10	11	11	10	10	11	11	11	11	11	15	16	15	16	16	15	15	16	15	15	15	15	14	14	13	12	12	12	12	12	13	12
	SE	NNW	NNW	N	N	NNW	NNW	N	NNW	NNW	NNW	NNW	N	N	W	N	N	N	N	N	N	N	N	N	N	SE	ENE	N	N	N	N	N	NE	N	N	E	N
Exxon 3	6	4	10	10	11	10	11	11	10	11	11	11	12	11	12	16	15	16	15	16	15	15	16	15	15	15	14	14	13	12	12	12	12	13	13	13	13
	SE	SSW	NNW	NNW	NNW	N	NNW	NNW	NNW	NNW	NNW	NNW	N	N	NNW	N	N	N	N	N	N	N	N	N	N	W	WSW	N	N	N	NE	SSE	N	N	SW	N	N
Morgans Point	7	2	12	12	13	12	13	12	11	12	12	13	14	13	13	17	16	17	16	16	16	16	16	17	17	16	16	16	15	14	14	14	14	14	15	15	15
	SE	E	NNW	NNW	NNW	NNW	NNW	NNW	NNW	NNW	NNW	NNW	NNW	N	N	N	N	N	N	N	N	N	N	N	N	WNW	NNW	W	NNE	N	N	ESE	SE	N	N	S	NNE
75/76	7	4	14	18	17	16	17	16	16	16	17	18	19	19	19	21	19	19	19	19	19	19	19	20	20	19	19	18	18	18	18	18	19	19	20	19	20
	SE	ESE	NNW	NNW	NNW	NNW	NNW	NNW	NNW	NNW	NNW	NNW	N	N	NW	N	N	N	N	N	N	N	N	N	ESE	SSW	E	NNE	N	N	ENE	NE	N	N	NE	N	N
63/64	7	5	7	21	20	19	19	19	19	19	19	19	21	22	22	21	24	22	22	21	21	21	21	21	22	22	22	22	21	21	21	21	21	22	22	23	23
	ESE	ESE	SSW	NNW	NNW	NNW	NNW	NNW	NNW	NNW	NNW	N	N	N	WSW	N	N	NW	NNW	N	NW	NNW	S	N	NNE	N	N	N	N	N	N	N	N	N	N	N	N
51/52	7	5	3	21	20	20	20	20	20	20	22	23	23	22	23	22	25	23	22	22	22	22	21	21	23	22	22	21	21	21	21	21	21	22	22	23	23
	ESE	ESE	E	NNW	NNW	NNW	NNW	N	N	NNW	NNW	N	N	N	S	N	NNW	SSW	SW	W	SSW	SW	NNE	N	N	N	N	N	N	N	N	N	N	N	N	N	N
37/38	8	5	4	21	20	21	20	19	20	21	21	23	24	24	23	25	23	24	23	23	22	21	22	23	23	23	22	21	21	21	21	21	21	22	22	22	22
	SE	ESE	ESE	NNW	N	NNW	N	N	N	NNW	NNW	N	N	N	W	N	WSW	ESE	ESE	S	SE	ESE	N	N	N	N	N	N	N	N	N	N	N	N	N	N	N
25/26	9	6	5	16	19	20	19	18	19	20	20	22	22	22	22	23	22	23	22	22	22	22	21	21	22	21	22	21	20	20	20	19	20	20	21	21	21
	ESE	ESE	ESE	NW	N	NNW	N	N	N	N	N	N	N	N	N	N	NW	SSE	NE	NNE	ENE	ENE	NE	N	N	N	N	N	N	N	N	N	N	N	N	N	N
11/12	11	9	7	9	17	19	17	17	18	19	19	20	20	20	20	23	22	22	22	21	21	21	21	21	22	21	21	20	19	19	20	19	20	20	20	20	20
	ESE	SE	ESE	SSW	NNW	NNW	N	N	N	N	N	N	N	N	N	SW	NE	N	N	N	N	N	N	N	N	N	N	N	N	N	N	N	N	N	N	N	N
1 & 2 Bravo	13	14	10	10	16	19	20	20	20	22	21	23	22	23	23	27	26	26	25	24	24	24	24	25	25	24	24	23	22	22	23	22	23	23	25	25	25
	ESE	SE	ESE	SE	NNW	NNW	N	N	NNW	NNW	N	N	N	N	N	SE	ESE	N	N	N	N	N	N	N	N	N	N	N	N	N	N	N	N	N	N	N	N

NOTE: This is automated data that may/may not agree with the official BAM thinking that's found on the daily slides.  
This data should be used as a guide only



# Houston Pilots: Sun. 10/29/2023

## Forecast Discussion

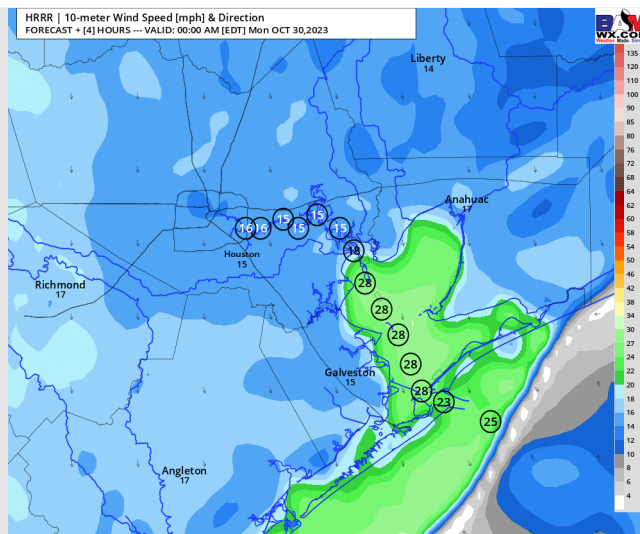
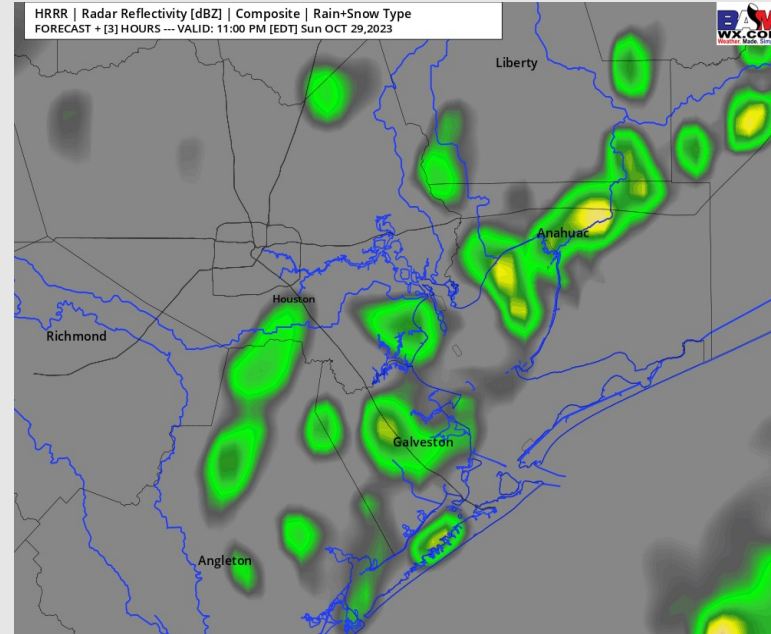
**Precip:** With the approaching of a cold front from the NW, scattered rain chances will increase the rest of the evening.

**Wind:** Winds will begin to shift to be out of the N/NW by 9 PM with the front passes. For Stations **N of Morgan's Point** winds will increase to 11 - 16 kts. For stations **S of Morgan's Point** winds will continue to increase to 22-27 kts for the rest of the evening. **Elevated wind gusts of 27-32 kts will be possible S of Morgan's Point after 10 PM.**

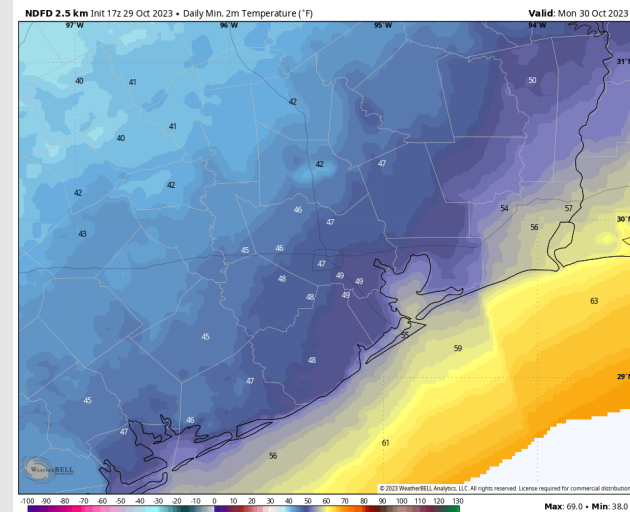
**Low Temps:** **N of Morgan's Point:** Upper 40's F. **S of Morgan's Point:** Upper 50s F

**Visibility:** Not anticipating any visibility issues currently.

## Precip Image: 10 PM CT



**Wind Speed:**  
**11 PM CT**



**Low Temps**  
**Monday**

# Houston Pilots: Mon. 10/30/2023

## Forecast Discussion

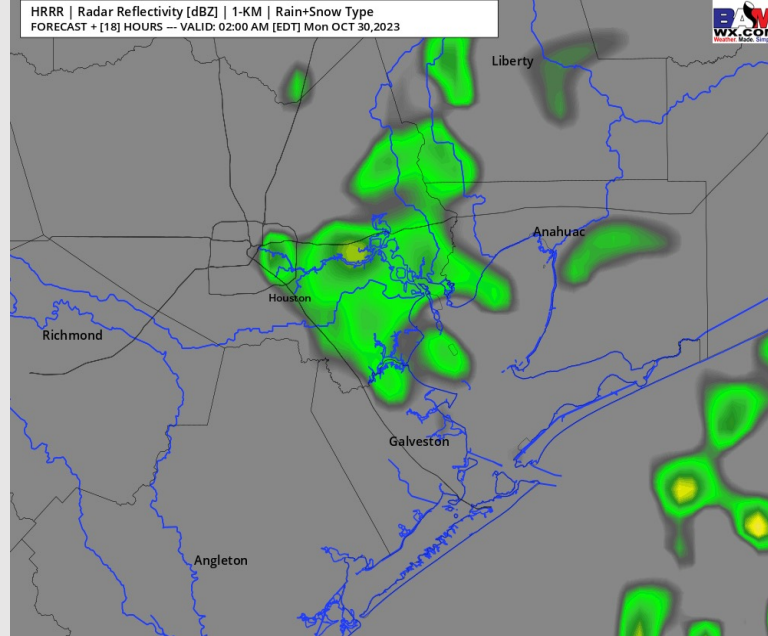
**Precip:** The passing of a front from the NW arriving just before midnight will allow for scattered/widespread rain chances to continue through 6 AM before a dry stretch in the morning and early afternoon. Towards 6 PM only isolated rain chances remain for the rest of the PM as most of the front will push through.

**Wind:** Winds will be out of the N/NW with the passing of a cold front throughout the day. Winds **N of Morgan's Point** will be at 11 - 16 kts all day today. **S of Morgan's Point** will be at 22-27 kts today. **Elevated wind gusts of 27-32 kts will be possible S of Morgan's Point throughout the day.**

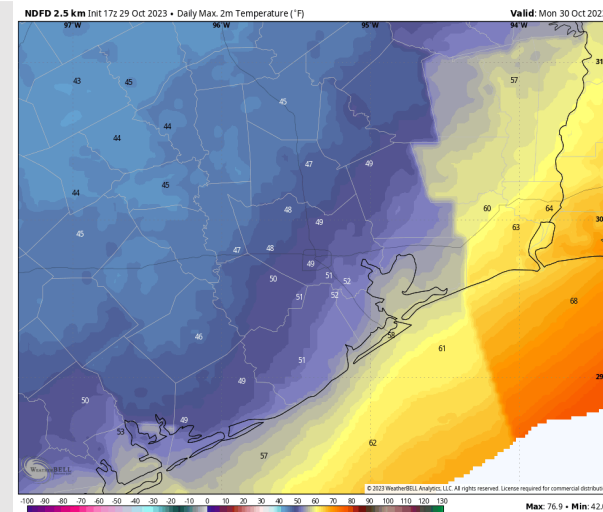
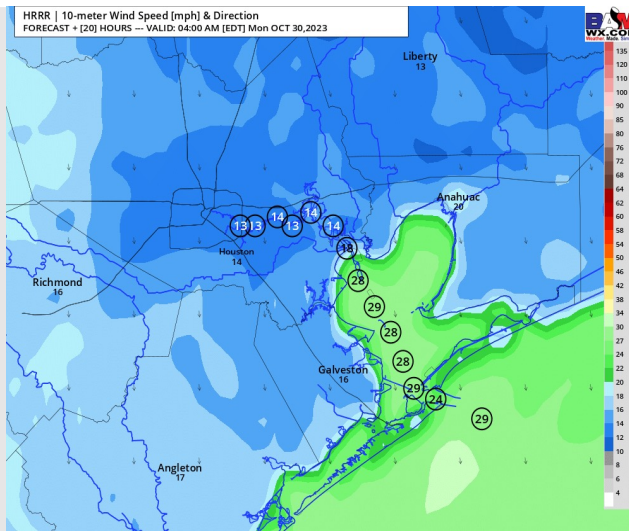
**High Temps:** Notably cooler. **N of Morgan's Point:** Upper 40s/Low 50s F. **S of Morgan's Point:** Low 60s F.

**Visibility:** No visibility concerns for today.

## Precip Image: 1 AM CT



**Wind Speed**  
**3 AM CT**



**High Temps**  
**Monday**

# Houston Pilots: Tues. 10/31/2023

## Forecast Discussion

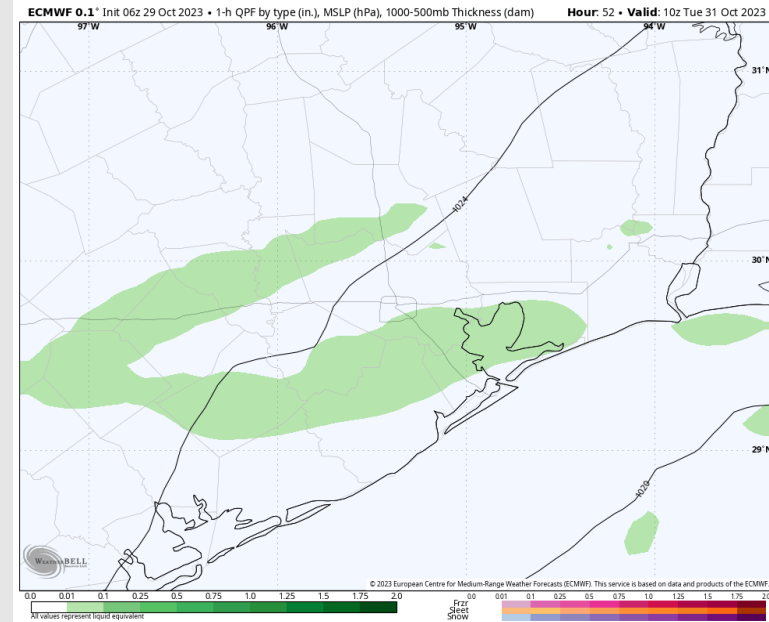
**Precip:** Isolated rain chances will remain for the early AM hours, tapering off after 6 AM to make way for dry conditions for the remainder of the day.

**Wind:** Winds will be sustained from the N and will remain elevated beyond the passing of the cold front. Winds **N of Morgan's Point** will be at 11 - 16 kts throughout majority of the day before decreasing to 3-8 kts after 8 PM. Winds **S of Morgan's Point** will be at 20-25 kts throughout the day. **Elevated wind gusts of 27-32 kts will be possible S of Morgan's Point through 7 PM.**

**High Temps:** Notably cooler. **N of Morgan's Point:** Mid 50's F. **S of Morgan's Point:** Low 60s F.

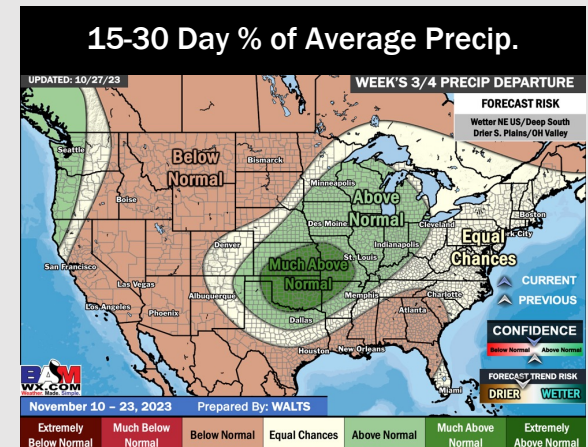
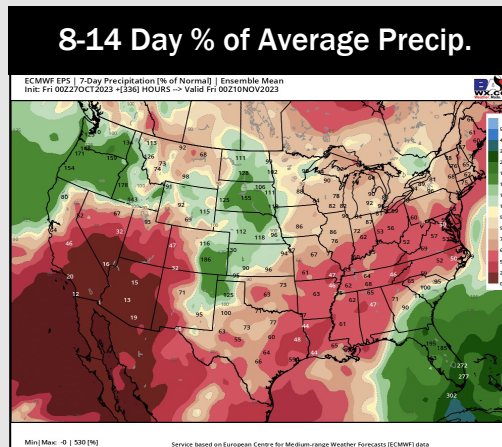
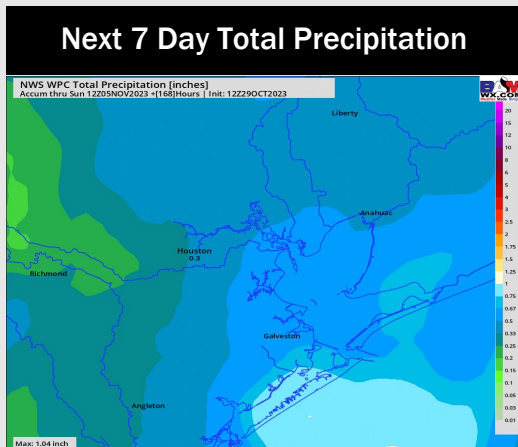
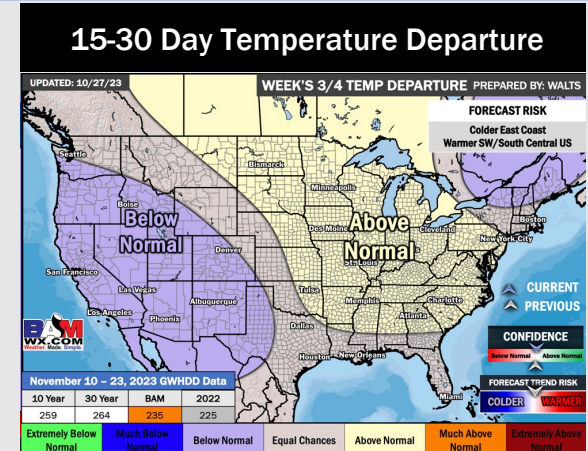
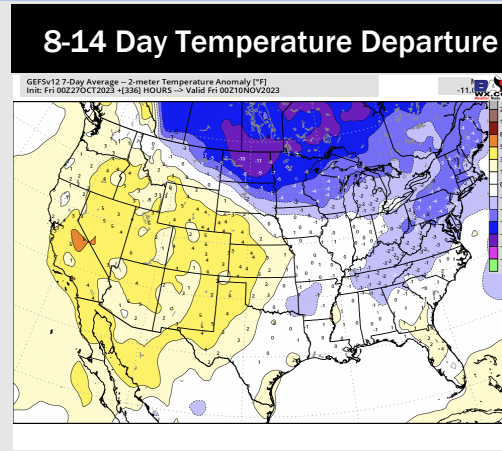
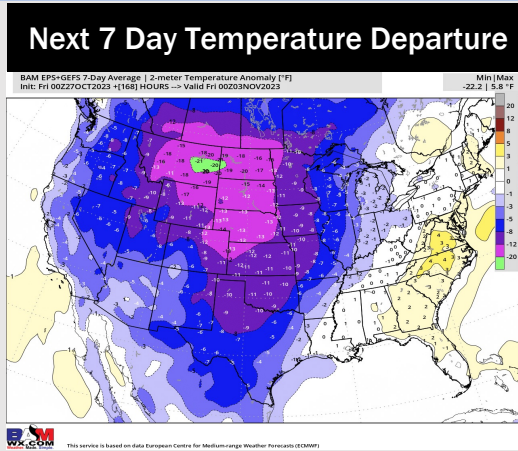
**Visibility:** Not anticipating any visibility issues currently.

## Precip Image: 5 AM CT





# Houston Pilots: 10/29/23



- Beyond the cold front exiting by early Tuesday AM, high pressure will settle in keeping the remaining days of the week dry. Warmer than normal temperatures expected through Sunday and below normal temperatures to follow starting Monday.
- Below normal rainfall and seasonal to slightly above normal temperatures are expected into the week 2 timeframe.
- Seasonal temperatures and below normal chances for precipitation are favored in the weeks <sup>3</sup>/<sub>4</sub> timeframe.