

Houston Pilots Forecast Package



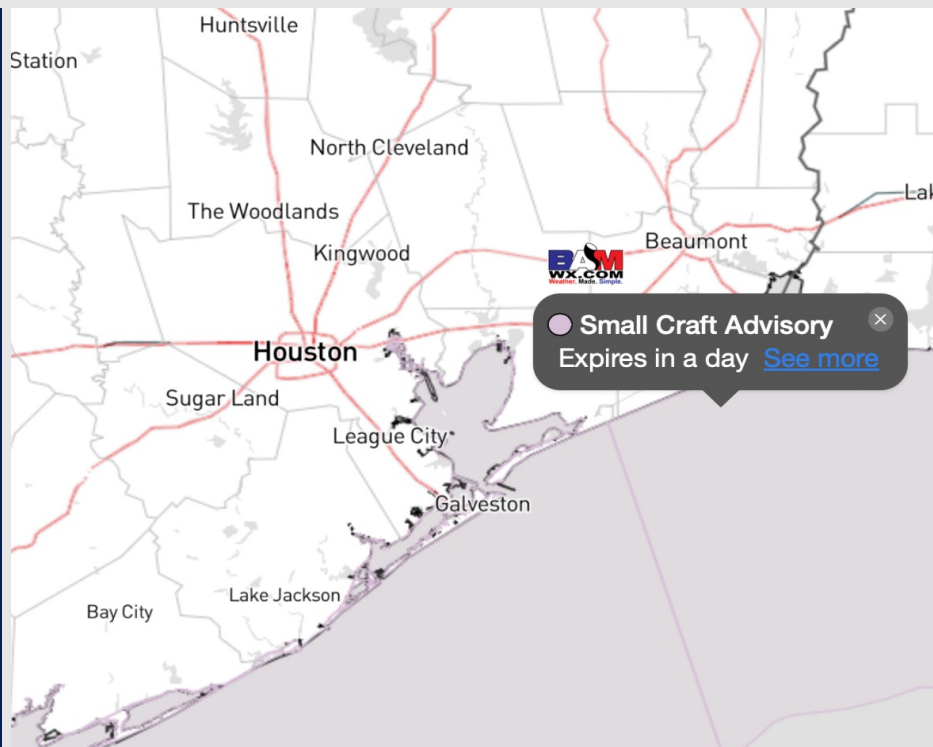
Updated: 4:05 AM CT

Sunday, October 15, 2023

Forecaster: Will Danby

Weather Headlines

- Dry conditions favored for the start of the week. Next potential rain chance would be Thursday via a cold front.
- Gustier winds will be possible today. Peak gusts in the range of 22 - 27 will be at play, especially in the early PM. **More details in slides below.**
- Not favoring any visibility concerns for the week at this time. Northerly winds will continue to keep the low levels of the atmosphere dry.



Radar/NWS Alerts: 4:00 AM CT



As always, please do not hesitate to reach out to us with any forecast questions via the chat option on the Weather Porthole or our on-call number, **(317)-560-8122** press 1 for forecast questions.

Houston Pilots Visibility Chart (miles)



Time	Sun 3am	Sun 4am	Sun 5am	Sun 6am	Sun 7am	Sun 8am	Sun 9am	Sun 10am	Sun 11am	Sun 12pm	Sun 1pm	Sun 2pm	Sun 3pm	Sun 4pm	Sun 5pm	Sun 6pm	Sun 7pm	Sun 8pm	Sun 9pm	Sun 10pm	Sun 11pm	Mon 12am	Mon 1am	Mon 2am	Mon 3am	Mon 4am	Mon 5am	Mon 6am	Mon 7am	Mon 8am	Mon 9am	Mon 10am	Mon 11am	Mon 12pm	Mon 1pm	Mon 2pm	
610 Bridge	10	10	10	10	10	10	10	10	10	10	10	10	10	10	10	10	10	10	10	10	10	10	10	10	10	10	10	10	10	10	10	10	10	10	10	10	10
Kinder 1	10	10	10	10	10	10	10	10	10	10	10	10	10	10	10	10	10	10	10	10	10	10	10	10	10	10	10	10	10	10	10	10	10	10	10	10	10
Greens Bayou	10	10	10	10	10	10	10	10	10	10	10	10	10	10	10	10	10	10	10	10	10	10	10	10	10	10	10	10	10	10	10	10	10	10	10	10	10
Shell Crude	10	10	10	10	10	10	10	10	10	10	10	10	10	10	10	10	10	10	10	10	10	10	10	10	10	10	10	10	10	10	10	10	10	10	10	10	10
Lynchburg Ferries	10	10	10	10	10	10	10	10	10	10	10	10	10	10	10	10	10	10	10	10	10	10	10	10	10	10	10	10	10	10	10	10	10	10	10	10	10
Exxon 3	10	10	10	10	10	10	10	10	10	10	10	10	10	10	10	10	10	10	10	10	10	10	10	10	10	10	10	10	10	10	10	10	10	10	10	10	10
Morgans Point	10	10	10	10	10	10	10	10	10	10	10	10	10	10	10	10	10	10	10	10	10	10	10	10	10	10	10	10	10	10	10	10	10	10	10	10	10
75/76	10	10	10	10	10	10	10	10	10	10	10	10	10	10	10	10	10	10	10	10	10	10	10	10	10	10	10	10	10	10	10	10	10	10	10	10	10
63/64	10	10	10	10	10	10	10	10	10	10	10	10	10	10	10	10	10	10	10	10	10	10	10	10	10	10	10	10	10	10	10	10	10	10	10	10	10
51/52	10	10	10	10	10	10	10	10	10	10	10	10	10	10	10	10	10	10	10	10	10	10	10	10	10	10	10	10	10	10	10	10	10	10	10	10	10
37/38	10	10	10	10	10	10	10	10	10	10	10	10	10	10	10	10	10	10	10	10	10	10	10	10	10	10	10	10	10	10	10	10	10	10	10	10	10
25/26	10	10	10	10	10	10	10	10	10	10	10	10	10	10	10	10	10	10	10	10	10	10	10	10	10	10	10	10	10	10	10	10	10	10	10	10	10
11/12	10	10	10	10	10	10	10	10	10	10	10	10	10	10	10	10	10	10	10	10	10	10	10	10	10	10	10	10	10	10	10	10	10	10	10	10	10
1 & 2 Bravo	10	10	10	10	10	10	10	10	10	10	10	10	10	10	10	10	10	10	10	10	10	10	10	10	10	10	10	10	10	10	10	10	10	10	10	10	10

NOTE: This is automated data that may/may not agree with the official BAM thinking that's found on the daily slides or special visibility report slides. This data should be used as a guide only

Houston Pilots Wind Chart



Forecast Confidence



Example

Sustained wind 13 Knots
Gusts 18 Knots
Wind from the N

WS: 13
G:18
N

Time Knots	Sun 3am	Sun 4am	Sun 5am	Sun 6am	Sun 7am	Sun 8am	Sun 9am	Sun 10am	Sun 11am	Sun 12pm	Sun 1pm	Sun 2pm	Sun 3pm	Sun 4pm	Sun 5pm	Sun 6pm	Sun 7pm	Sun 8pm	Sun 9pm	Sun 10pm	Sun 11pm	Mon 12am	Mon 1am	Mon 2am	Mon 3am	Mon 4am	Mon 5am	Mon 6am	Mon 7am	Mon 8am	Mon 9am	Mon 10am	Mon 11am	Mon 12pm	Mon 1pm	Mon 2pm
610 Bridge	4 10 N	4 9 NNW	3 9 N	4 9 NNW	4 10 NNW	4 11 NNW	8 19 N	9 17 NNW	10 16 N	11 17 N	12 18 NNW	12 20 NNW	12 20 NNW	12 18 N	12 18 N	11 17 N	10 15 N	8 13 N	8 12 N	7 11 N	7 11 N	7 10 N	7 11 N	7 11 N	7 11 N	7 11 N	7 11 N	7 11 N	8 12 N	9 13 N	10 14 N	10 15 N	10 14 N	9 15 N	10 14 N	
Kinder 1	4 10 N	4 9 NNW	3 9 NNW	4 9 NNW	4 10 NNW	5 11 NNW	8 19 N	9 17 NNW	10 17 N	11 17 N	12 18 NNW	12 20 NNW	12 20 NNW	12 18 N	12 18 N	11 17 N	10 15 N	8 13 N	8 12 N	7 11 N	7 11 N	7 10 N	7 11 N	7 11 N	7 11 N	7 11 N	7 11 N	8 12 N	9 13 N	10 14 N	10 15 N	10 14 N	9 15 N	10 14 N		
Greens Bayou	4 10 N	4 9 NNW	4 9 NNW	4 10 NNW	4 10 NNW	5 12 NNW	8 19 N	9 17 NNW	10 18 N	11 18 N	12 19 NNW	12 20 NNW	12 20 NNW	13 19 NNW	12 18 NNW	11 17 N	10 15 N	9 13 N	8 12 N	7 11 N	7 10 N	7 10 N	7 11 N	7 11 N	7 11 N	7 11 N	6 10 N	7 10 N	8 11 N	9 12 N	10 13 N	10 14 N	9 14 N	10 13 N		
Shell Crude	4 10 N	4 10 N	4 9 NNW	4 10 NNW	4 10 NNW	5 12 NNW	8 19 N	9 17 NNW	10 18 N	11 18 N	12 19 NNW	12 20 NNW	12 20 NNW	13 19 NNW	12 18 NNW	11 17 N	10 15 N	9 13 N	8 12 N	7 11 N	7 11 N	7 11 N	7 11 N	7 11 N	7 11 N	7 11 N	7 11 N	8 12 N	9 13 N	10 14 N	10 15 N	10 14 N	9 15 N	10 14 N		
Lynchburg Ferries	4 11 N	4 10 N	4 10 NNW	4 10 NNW	4 10 NNW	5 12 NNW	9 19 N	9 17 NNW	11 18 N	11 18 N	12 19 NNW	13 19 NNW	13 20 NNW	13 20 NNW	12 19 NNW	12 18 N	11 15 N	10 14 N	9 12 N	8 11 N	7 10 N	7 11 N	7 11 N	7 11 N	7 11 N	7 10 N	7 10 N	7 10 N	8 11 N	9 13 N	10 14 N	10 14 N	9 14 N	10 13 N		
Exxon 3	5 12 N	4 11 N	4 11 NNW	4 11 NNW	4 11 NNW	5 13 NNW	9 19 N	9 18 NNW	11 17 NNW	12 18 NNW	12 18 NNW	13 20 NNW	13 20 NNW	13 20 NNW	13 18 NNW	12 17 N	11 16 N	11 15 N	9 13 N	9 12 N	8 12 N	8 12 N	8 12 N	8 12 N	8 12 N	8 12 N	8 12 N	8 12 N	9 13 N	10 14 N	10 14 N	9 14 N	10 13 N	10 14 N		
Morgans Point	7 14 N	6 13 NNW	6 13 NNW	6 14 NNW	7 14 NNW	7 15 NNW	10 19 N	10 18 NNW	11 17 NNW	12 17 NNW	13 19 NNW	14 20 NNW	14 20 NNW	14 20 NNW	13 19 NNW	15 18 N	14 17 N	12 16 N	11 15 N	10 14 N	11 13 N	11 13 N	11 13 N	11 14 N	11 14 N	11 14 N	11 14 N	11 14 N	13 17 N	14 18 N	14 18 N	14 18 N	14 18 N	14 18 N		
75/76	12 17 N	12 16 SW	11 16 WNW	12 17 N	12 17 N	12 19 N	14 20 N	14 18 NNW	15 17 NNW	16 17 NNW	16 19 NNW	17 20 NNW	17 21 NNW	17 21 NNW	18 20 N	19 19 N	16 18 N	14 16 SSE	14 16 SE	15 16 ESE	15 17 S	16 17 SSW	16 17 W	16 17 NNW	16 17 NNW	16 17 NNW	15 16 N	15 16 N	15 16 N	15 16 N	16 16 N	16 16 N	16 16 N	16 16 N		
63/64	15 19 NW	14 18 ENE	13 17 ESE	15 19 N	15 20 N	15 20 N	16 21 NNW	16 20 NNW	17 19 NNW	17 20 NNW	18 21 NNW	18 22 NNW	19 22 NNW	19 22 NNW	19 21 N	20 21 N	18 20 N	17 19 N	17 18 N	17 18 N	17 18 N	17 18 N	17 18 N	17 18 N	17 18 N	17 18 N	17 18 N	18 19 NNE	18 19 NNE	18 19 NNE	18 19 SE	18 19 SSW	18 19 S	18 19 N		
51/52	16 20 SE	16 19 N	14 18 N	16 19 NNW	16 19 NNW	17 20 N	15 19 N	15 19 NNW	17 21 NNW	17 21 NNW	17 21 NNW	19 22 NNW	19 22 NNW	20 22 NNW	20 22 NNW	20 21 N	19 20 N	18 19 N	18 19 N	18 19 N	18 19 N	18 19 N	18 19 N	18 19 N	18 19 N	18 19 N	18 19 N	18 19 N	18 19 N	18 19 N	18 19 N	18 19 N	18 19 N	18 19 N	18 19 N	
37/38	17 20 N	16 19 N	15 18 N	16 19 SSE	16 20 SW	17 21 N	18 20 NNW	17 19 NNW	15 18 NNW	15 18 NNW	17 19 NNW	18 20 NNW	18 21 NNW	18 22 NNW	19 21 N	19 21 N	18 19 N	17 18 N	17 18 N	17 18 N	17 18 N	17 18 N	17 18 N	17 18 N	17 18 N	17 18 N	17 18 N	17 18 N	17 18 N	17 18 N	17 18 N	17 18 N	17 18 N	17 18 N	17 18 N	
25/26	15 20 N	15 19 N	13 18 NNE	14 19 NNE	15 19 ESE	15 20 WNW	17 20 N	16 19 N	15 18 NNW	16 19 NNW	17 20 NNW	18 21 NNW	18 22 NNW	19 22 NNW	19 23 NNW	18 20 N	17 18 N	16 17 N	16 17 N	16 17 N	16 17 N	16 17 N	16 17 N	16 17 N	16 17 N	16 17 N	16 17 N	16 17 N	16 17 N	16 17 N	16 17 N	16 17 N	16 17 N	16 17 N	16 17 N	
11/12	14 21 N	14 20 N	13 19 NNE	13 19 N	14 19 NNE	14 19 W	15 20 N	16 20 N	14 18 NNW	16 19 NNW	17 20 NNW	18 21 NNW	18 22 NNW	18 23 NNW	18 20 N	17 19 N	16 18 N	16 17 N	16 17 N	16 17 N	16 17 N	16 17 N	16 17 N	16 17 N	16 17 N	16 17 N	16 17 N	16 17 N	16 17 N	16 17 N	16 17 N	16 17 N	16 17 N	16 17 N	16 17 N	
1 & 2 Bravo	19 24 N	18 23 N	17 22 NNE	16 21 N	17 21 NE	17 21 N	18 21 N	16 21 N	17 21 NNW	17 21 NNW	18 21 NNW	18 21 NNW	21 22 NNW	21 23 NNW	21 23 NNW	20 23 N	19 22 N	19 21 N	19 21 N	19 21 N	19 21 N	19 21 N	19 21 N	19 21 N	19 21 N	19 21 N	19 21 N	19 21 N	19 21 N	19 21 N	19 21 N	19 21 N	19 21 N	19 21 N	19 21 N	

NOTE: This is automated data that may/may not agree with the official BAM thinking that's found on the daily slides. This data should be used as a guide only

Houston Pilots: Sun. 10/15/2023



Forecast Discussion

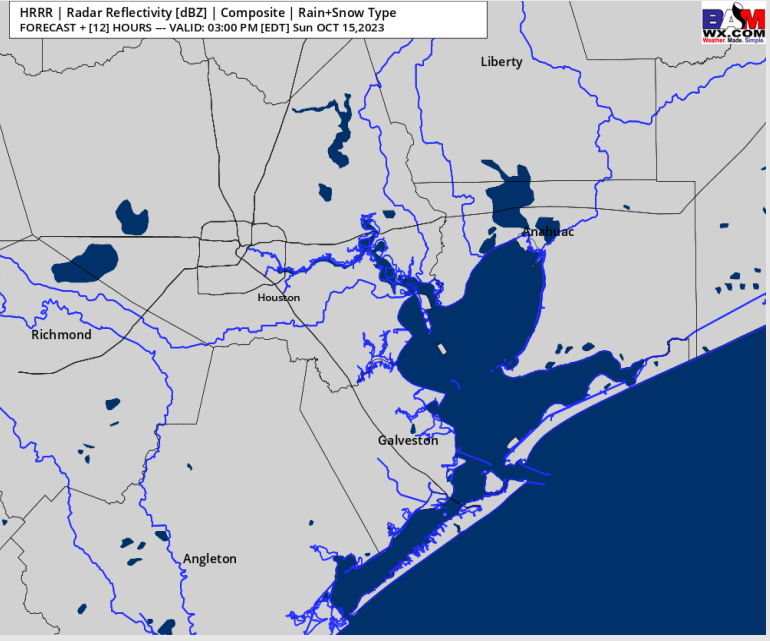
Precip: Favoring dry conditions for all locations today.

Wind: Winds will be out of the N/NNW for all of Sunday. For Stations **N of Morgan's Point**, winds will be at 5-10 kts throughout the day with an increase to 11 - 16 kts between 9 AM to 6 PM. After 6 PM winds again return to 5 -10 kts. Winds **S of Morgan's Point** will be 19- 24 kts throughout the day Sunday. Winds at the Boarding Station and 11/12 can top out a touch higher to 26 kts from 3 -6 PM. **Wind gusts of 23 -28 kts will be possible S of Morgan's Point throughout the day Sunday. Stations N of Morgan's Point can expect gusts of the same intensity between 9 AM to 6 PM.**

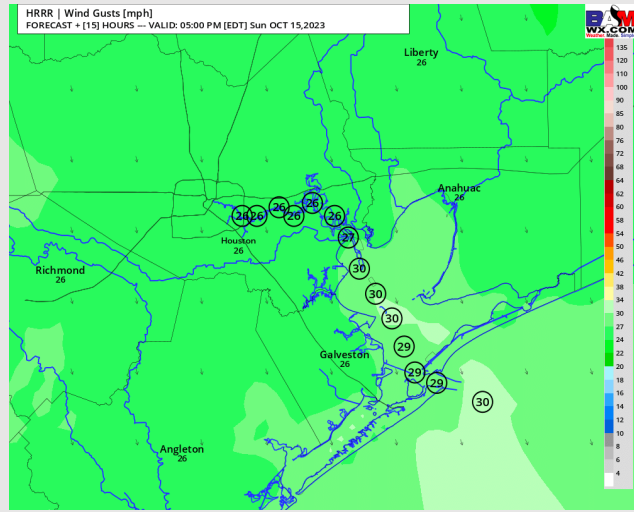
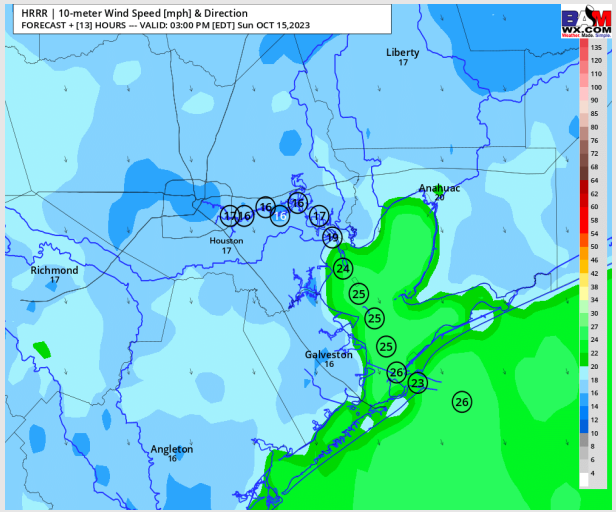
High Temps: **N of Morgan's Point:** Mid 70s. **S of Morgan's Point:** Low to mid 70's.

Visibility: Not anticipating any visibility issues at this time.

Precip Image: 2 PM CT



Wind Speed:
2 PM CT



Peak Wind Gusts
~4 PM CT

Forecast Discussion

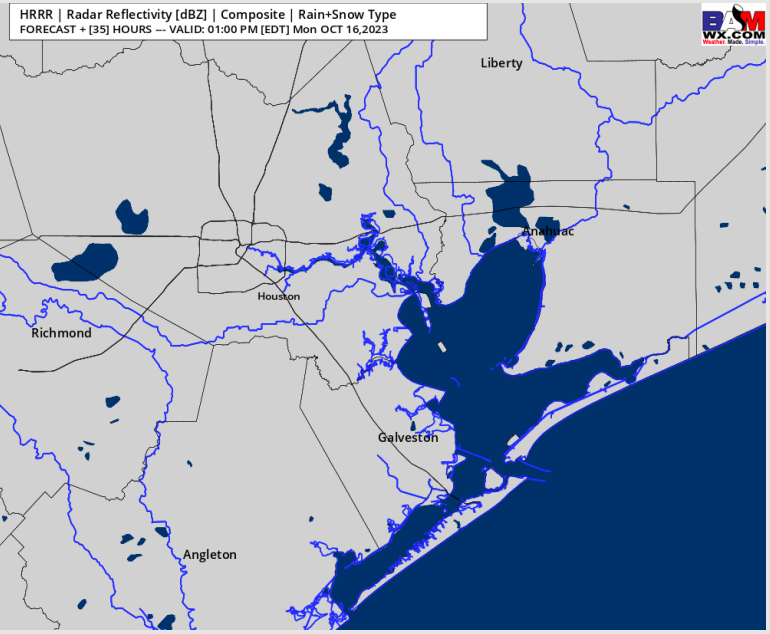
Precip: Dry conditions expected into Monday.

Wind: N/NNW winds persist for Monday. Sustained winds for locations **N of Morgan's Point** will start at 4 - 9 kts and increase from 10 AM - 12 PM to 8 - 13 kts through 6 PM. After 6 PM winds subside to 3 - 8 kts. Locations **S of Morgan's Point** winds will start at 17-22 kts in the early AM and slowly decrease to 14 - 19 kts by 10 AM. Winds remain at this speed for the rest of the PM.

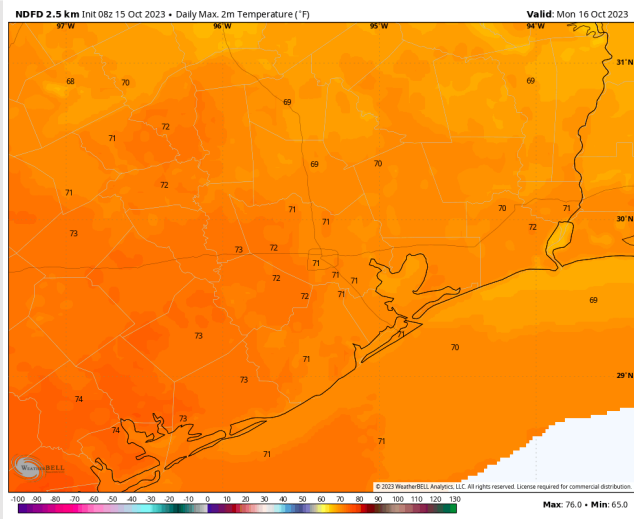
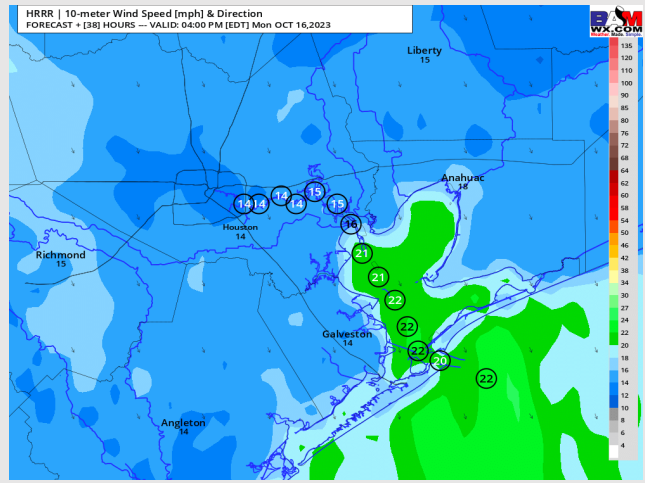
High Temps: **N of Morgan's Point:** Low 70s F. **S of Morgan's Point:** Near 70/Low 70s F.

Visibility: Not anticipating any visibility issues currently.

Precip Image: 12 PM CT



Wind Speed:
3 PM CT

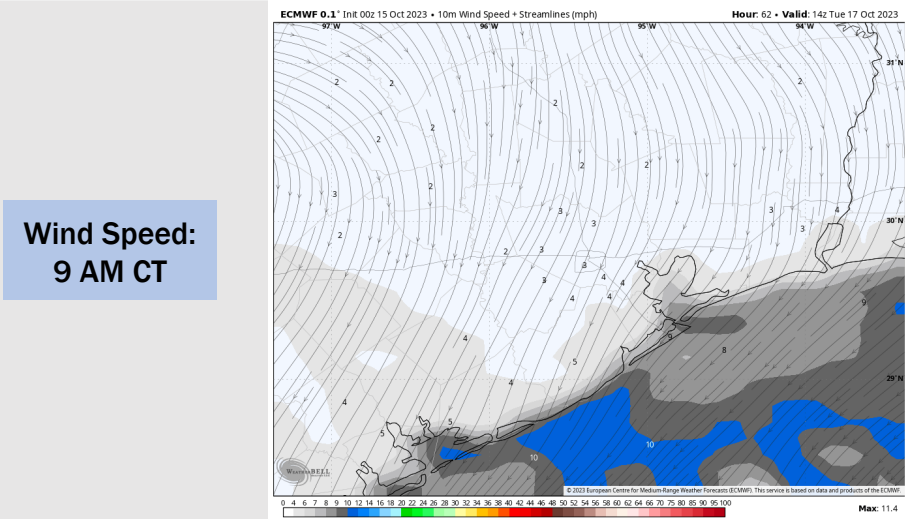
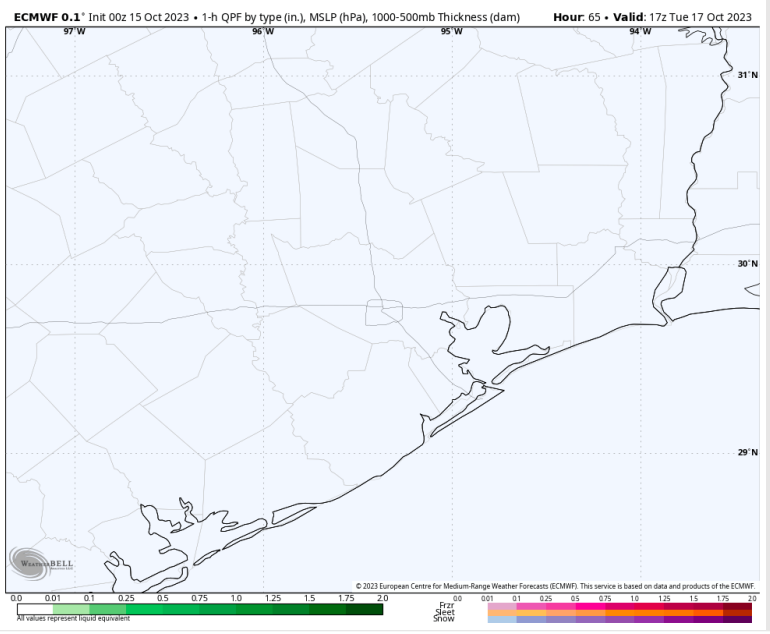


High Temps
Monday

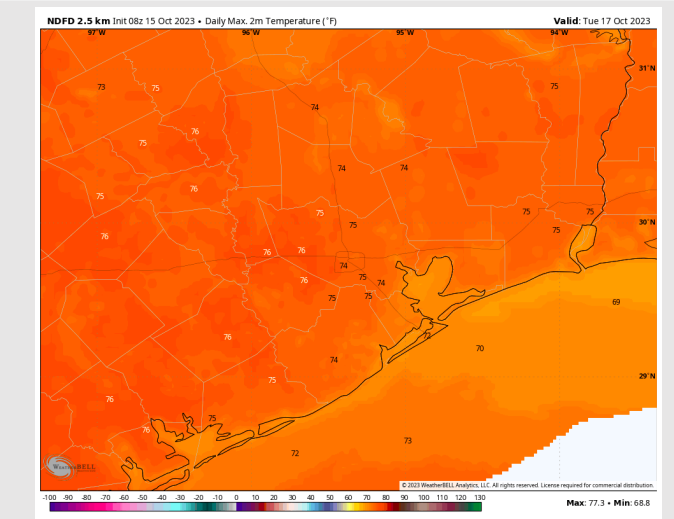
Forecast Discussion

- Precip:** Anticipating dry conditions for Tuesday.
- Wind:** Winds out of the N will gradually rotate clockwise out of the S/SE by 3 PM. For Stations **N of Morgan's Point**, winds will be at 2-7 kts throughout the day. Winds of 7-12 kts **S of Morgan's Point** will gradually calm to 3-8 kts by 10 AM and remain at that clip for the rest of the day.
- High Temps:** **N of Morgan's Point:** Mid 70s F. **S of Morgan's Point:** Low 70's F.
- Visibility:** Not anticipating any visibility concerns at this time.

Precip Image: 12 PM CT



Wind Speed:
9 AM CT

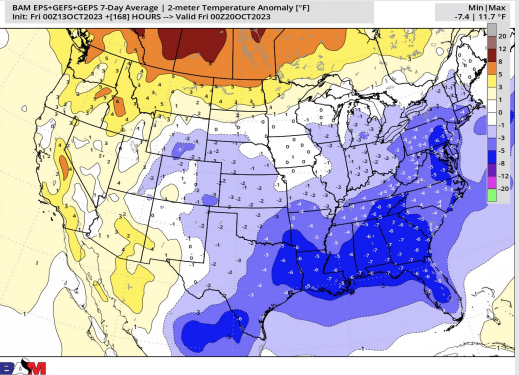


High Temps
Tuesday

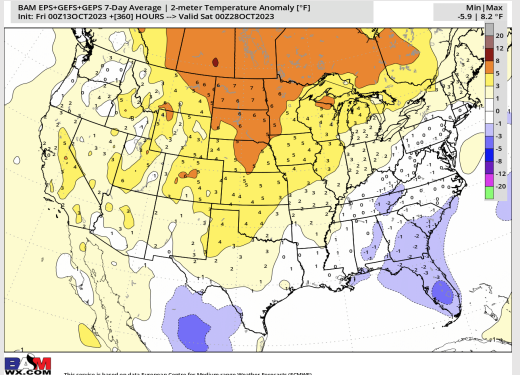
Houston Pilots: 10/15/23



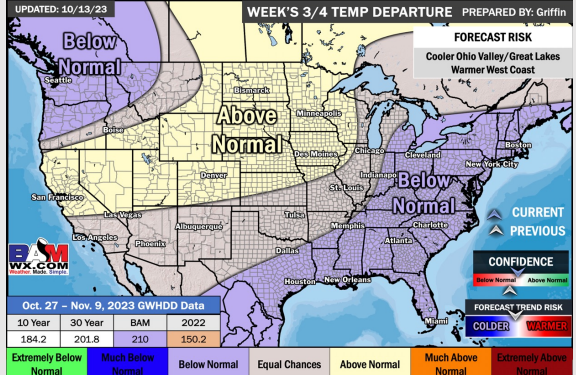
Next 7 Day Temperature Departure



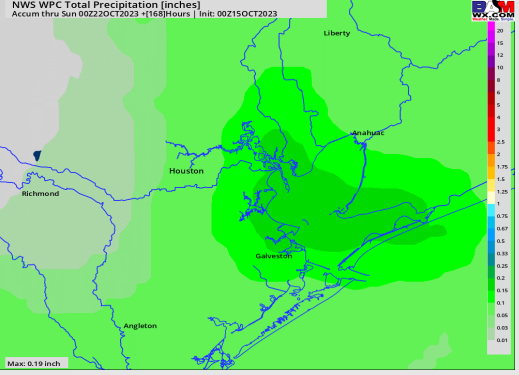
8-14 Day Temperature Departure



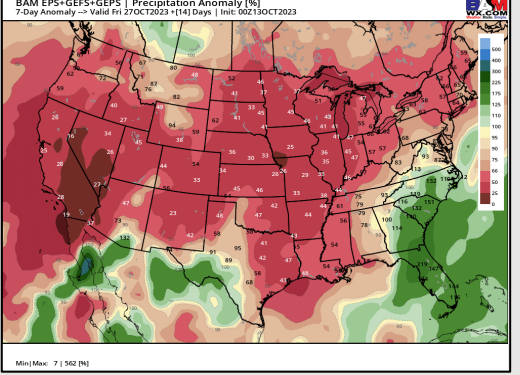
15-30 Day Temperature Departure



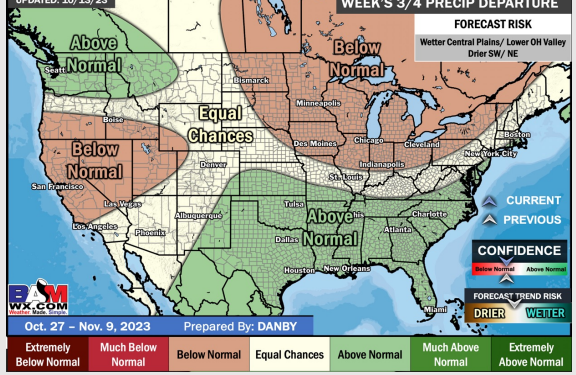
Next 7 Day Total Precipitation



8-14 Day % of Average Precip.



15-30 Day % of Average Precip.



- A dry stretch will be upcoming this week. The next potential rain chance would come Thursday via a cold front, but better rain chances look to remain to the NE. Temperatures are favored to remain below normal this week.
- Generally drier and average temperatures are expected into the week 2 timeframe.
- Below normal temperatures and above normal chances for precipitation are favored in the weeks 3/4 timeframe.