

# Houston Pilots Forecast Package



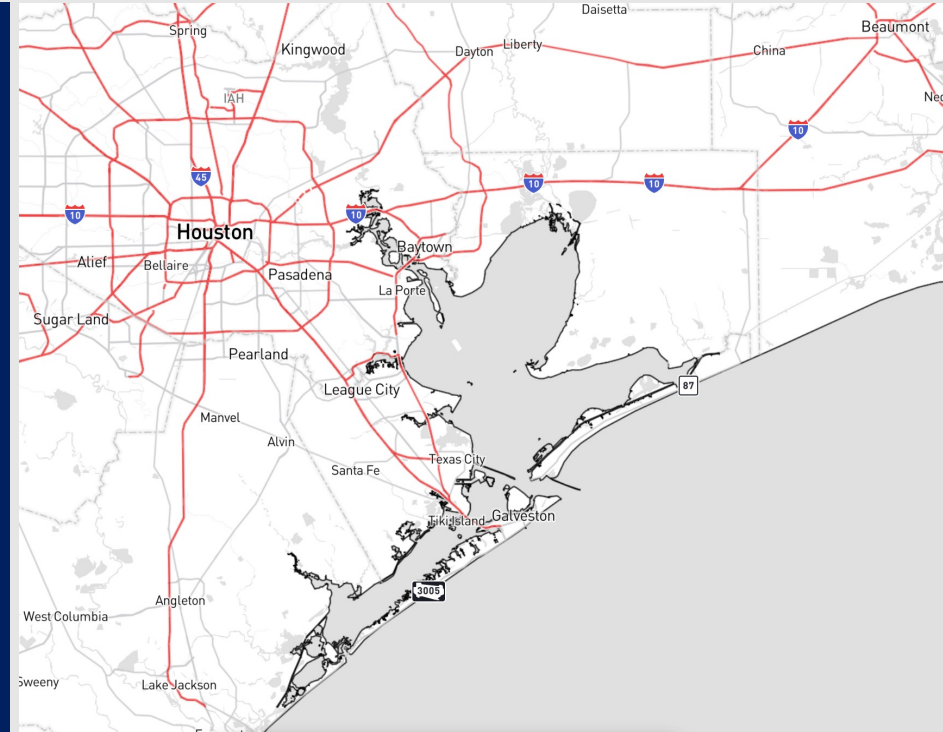
Updated: 5:00 AM CT

Monday, October 2, 2023

Forecaster: Will Danby

## Weather Headlines

- Not anticipating tropical development in the Gulf of Mexico over the next 7-10 days.
- Majority of rain chances in the morning over the next 2 – 3 days secluded S of 11/12 and near the Boarding Station, with chances moving ashore in the afternoon.
- Elevated winds of 13-18 kts will persist over the next 2 – 3 days for Stations S of Morgan's Point
- Not anticipating any visibility concerns over the next few days.



**Radar/NWS Alerts: 5:00 AM CT**



As always, please do not hesitate to reach out to us with any forecast questions via the chat option on the Weather Porthole or our on-call number, **(317)-560-8122** press 1 for forecast questions.

# Houston Pilots Visibility Chart (miles)



Time	Mon 3am	Mon 4am	Mon 5am	Mon 6am	Mon 7am	Mon 8am	Mon 9am	Mon 10am	Mon 11am	Mon 12pm	Mon 1pm	Mon 2pm	Mon 3pm	Mon 4pm	Mon 5pm	Mon 6pm	Mon 7pm	Mon 8pm	Mon 9pm	Mon 10pm	Mon 11pm	Tue 12am	Tue 1am	Tue 2am	Tue 3am	Tue 4am	Tue 5am	Tue 6am	Tue 7am	Tue 8am	Tue 9am	Tue 10am	Tue 11am	Tue 12pm	Tue 1pm	Tue 2pm		
<b>610 Bridge</b>	10	10	10	10	10	10	10	10	10	10	10	10	10	10	10	10	10	10	10	10	10	10	10	10	10	10	10	10	10	10	10	10	10	10	10	10	10	
<b>Kinder 1</b>	10	10	10	10	10	10	10	10	10	10	10	10	10	10	10	10	10	10	10	10	10	10	10	10	10	10	10	10	10	10	10	10	10	10	10	10	10	
<b>Greens Bayou</b>	10	10	10	10	10	10	10	10	10	10	10	10	10	10	10	10	10	10	10	10	10	10	10	10	10	10	10	10	10	10	10	10	10	10	10	10	10	
<b>Shell Crude</b>	10	10	10	10	10	10	10	10	10	10	10	10	10	10	10	10	10	10	10	10	10	10	10	10	10	10	10	10	10	10	10	10	10	10	10	10	10	10
<b>Lynchburg Ferries</b>	10	10	10	10	10	10	10	10	10	10	10	10	10	10	10	10	10	10	10	10	10	10	10	10	10	10	10	10	10	10	10	10	10	10	10	10	10	10
<b>Exxon 3</b>	10	10	10	10	10	10	10	10	10	10	10	10	10	10	10	10	10	10	10	10	10	10	10	10	10	10	10	10	10	10	10	10	10	10	10	10	10	10
<b>Morgans Point</b>	10	10	10	10	10	10	10	10	10	10	10	10	10	10	10	10	10	10	10	10	10	10	10	10	10	10	10	10	10	10	10	10	10	10	10	10	10	10
<b>75/76</b>	10	10	10	10	10	10	10	10	10	10	10	10	10	10	10	10	10	10	10	10	10	10	10	10	10	10	10	10	10	10	10	10	10	10	10	10	10	10
<b>63/64</b>	10	10	10	10	10	10	10	10	10	10	10	10	10	10	10	10	10	10	10	10	10	10	10	10	10	10	10	10	10	10	10	10	10	10	10	10	10	10
<b>51/52</b>	10	10	10	10	10	10	10	10	10	10	10	10	10	10	10	10	10	10	10	10	10	10	10	10	10	10	10	10	10	10	10	10	10	10	10	10	10	10
<b>37/38</b>	10	10	10	10	10	10	10	10	10	10	10	10	10	10	10	10	10	10	10	10	10	10	10	10	10	10	10	10	10	10	10	10	10	10	10	10	10	10
<b>25/26</b>	10	10	10	10	10	10	10	10	10	10	10	10	10	10	10	10	10	10	10	10	10	10	10	10	10	10	10	10	10	10	10	10	10	10	10	10	10	10
<b>11/12</b>	10	10	10	10	10	10	10	10	10	10	10	10	10	10	10	10	10	10	10	10	10	10	10	10	10	10	10	10	10	10	10	10	10	10	10	10	10	10
<b>1 &amp; 2 Bravo</b>	10	10	10	10	10	10	10	10	10	10	10	10	10	10	10	10	10	10	10	10	10	10	10	10	10	10	10	10	10	10	10	10	10	10	10	10	10	10

**NOTE: This is automated data that may/may not agree with the official BAM thinking that's found on the daily slides or special visibility report slides. This data should be used as a guide only**

# Houston Pilots Wind Chart



## Forecast Confidence



Sustained wind 13 Knots  
Gusts 18 Knots  
Wind from the N

## Example

WS: 13  
G:18  
N

Time Knots	Mon 3am	Mon 4am	Mon 5am	Mon 6am	Mon 7am	Mon 8am	Mon 9am	Mon 10am	Mon 11am	Mon 12pm	Mon 1pm	Mon 2pm	Mon 3pm	Mon 4pm	Mon 5pm	Mon 6pm	Mon 7pm	Mon 8pm	Mon 9pm	Mon 10pm	Mon 11pm	Tue 12am	Tue 1am	Tue 2am	Tue 3am	Tue 4am	Tue 5am	Tue 6am	Tue 7am	Tue 8am	Tue 9am	Tue 10am	Tue 11am	Tue 12pm	Tue 1pm	Tue 2pm			
610 Bridge	3	3	4	4	4	5	7	9	9	9	9	9	8	8	9	9	9	9	7	6	5	4	4	4	4	5	5	5	5	6	7	8	8	9	9	9	9		
	5	5	5	5	7	8	11	13	13	13	13	12	12	12	14	14	14	13	10	9	8	6	6	7	7	7	7	7	7	8	10	11	13	13	13	14			
Kinder 1	3	4	4	4	4	5	7	9	9	9	9	8	8	8	9	9	9	8	7	6	5	4	4	4	4	5	5	5	6	7	8	9	9	9	9	9			
	5	5	5	6	6	8	11	13	13	13	13	12	12	12	14	14	14	13	10	9	8	6	7	7	7	7	7	7	8	10	11	13	13	13	13	13			
Greens Bayou	3	4	4	4	4	5	7	8	9	9	9	8	8	8	9	9	9	8	6	5	4	4	4	4	5	5	5	6	7	8	9	9	9	9	9	9			
	5	5	5	6	7	8	11	13	13	13	12	12	12	12	13	14	14	13	10	9	8	7	7	7	7	7	7	8	10	11	13	13	13	13	13	13			
Shell Crude	3	4	4	5	5	6	8	9	9	10	9	9	9	9	10	10	9	8	7	6	5	5	5	5	5	5	5	6	8	9	9	9	9	10	9	9			
	5	5	5	6	7	9	11	13	13	12	12	12	12	12	13	14	14	13	10	9	8	7	7	7	7	7	7	8	10	11	13	13	13	13	13	13			
Lynchburg Ferries	4	5	5	5	5	6	8	9	9	10	10	9	9	10	11	10	10	8	7	6	5	5	5	5	5	6	6	7	8	9	9	10	10	10	10	10			
	5	6	5	6	7	9	11	13	13	12	12	12	12	12	13	14	14	13	12	10	9	8	7	7	7	8	8	10	11	12	13	13	13	13	13	13			
Exxon 3	5	5	5	6	6	7	8	9	10	10	10	9	10	10	11	11	10	9	8	7	6	6	6	6	6	6	7	7	8	9	10	10	10	10	10	10	10		
	7	7	7	8	8	9	11	13	13	12	12	12	13	13	15	14	14	12	11	10	9	8	8	8	8	8	8	9	10	11	13	13	13	13	14	14	14		
Morgans Point	7	7	7	8	8	9	10	10	10	11	10	11	11	12	13	13	12	11	10	9	9	8	9	8	9	9	9	9	10	11	11	11	11	11	11	11	11	11	
	9	9	9	9	10	11	12	13	13	13	13	13	14	15	16	16	15	14	13	11	11	10	11	10	11	10	11	11	11	12	13	13	13	14	14	15	15		
75/76	11	10	10	11	12	12	13	12	11	11	12	14	14	16	16	15	14	13	12	11	11	12	12	12	12	12	13	13	13	12	12	13	13	13	13	13	13		
	12	11	12	12	13	14	14	14	14	14	13	15	16	17	18	17	17	16	14	13	13	13	13	13	13	13	14	14	14	14	14	14	15	15	15	15	15	15	
63/64	13	12	12	12	13	14	14	14	13	13	13	14	14	15	16	16	15	14	13	12	11	11	12	12	12	13	13	13	14	14	14	14	14	14	14	14	14	14	
	14	13	13	13	14	15	15	15	14	14	15	16	17	17	17	17	16	14	13	12	12	12	12	13	13	13	14	14	14	14	14	14	14	14	14	14	14	14	14
51/52	13	12	12	12	13	13	13	13	14	14	14	14	14	15	15	15	15	14	13	12	12	12	12	12	13	13	13	14	14	14	14	14	14	14	14	14	14	14	
	14	13	13	13	14	15	15	15	15	15	16	16	17	16	17	17	17	16	15	14	13	13	14	14	14	14	14	14	14	14	14	14	14	14	14	14	14	14	14
37/38	13	12	12	12	13	13	14	14	15	14	15	15	15	15	14	14	14	13	12	12	12	12	12	13	13	13	13	13	13	13	13	13	13	13	13	13	13	13	
	14	14	14	13	14	14	15	16	16	17	16	16	16	16	16	16	16	15	13	13	13	14	14	14	14	14	14	14	14	14	14	14	14	14	14	14	14	14	14
25/26	12	12	12	12	12	13	14	14	14	15	14	15	14	14	13	13	13	12	11	11	11	11	12	12	12	12	12	12	12	11	12	14	14	14	14	14	14	14	
	13	13	13	13	14	14	15	15	16	16	16	16	16	16	15	15	15	14	13	12	13	13	13	13	13	13	13	13	13	13	13	13	13	13	13	13	13	13	
11/12	12	12	12	12	13	13	14	14	14	15	15	15	14	14	13	13	13	12	11	11	12	12	12	12	12	12	12	12	12	13	14	14	14	14	14	14	14	14	
	14	14	14	14	14	14	15	16	16	17	16	16	16	16	16	15	15	15	14	13	13	13	13	13	13	13	14	14	14	14	14	14	14	14	14	14	14	14	14
1 & 2 Bravo	16	15	15	15	16	16	17	17	17	17	17	16	15	15	15	15	14	14	14	14	14	14	14	15	15	15	15	15	16	16	16	16	16	16	16	16	16	16	16
	17	17	17	17	17	17	18	18	18	19	18	18	17	17	16	16	16	16	15	15	15	16	16	16	16	16	16	16	16	16	16	16	16	16	16	16	16	16	16

NOTE: This is automated data that may/may not agree with the official BAM thinking that's found on the daily slides. This data should be used as a guide only

# Houston Pilots: Mon. 10/2/2023



## Forecast Discussion

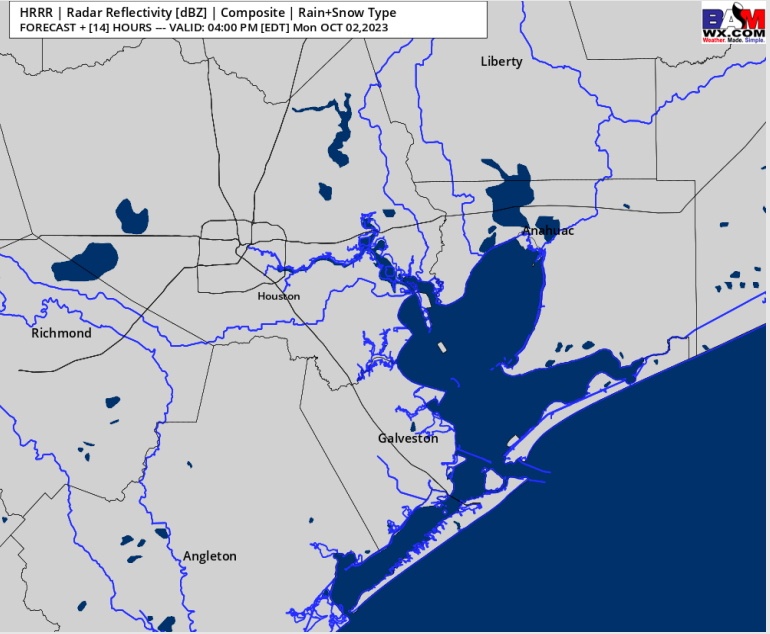
**Precip:** Stations S of 11/12 will see low-end isolated shower chances (10%) starting at 2 PM and lasting through sunset. Better rain chances will remain further offshore (SE) over the gulf. Favoring dry conditions for all other stations throughout the day.

**Wind:** Winds are expected to be from the east during the AM hours. Towards 2 PM winds will veer from the SE and remain as such for the remainder of the day. For Stations N of Morgan's Point, winds will begin the day relatively calm at 2-7 kts but will gradually increase to 6 - 10 kts by 12 PM and will return to 2-7 kts by 8 PM. Winds S of Morgan's Point will be 13-18 kts throughout the day.

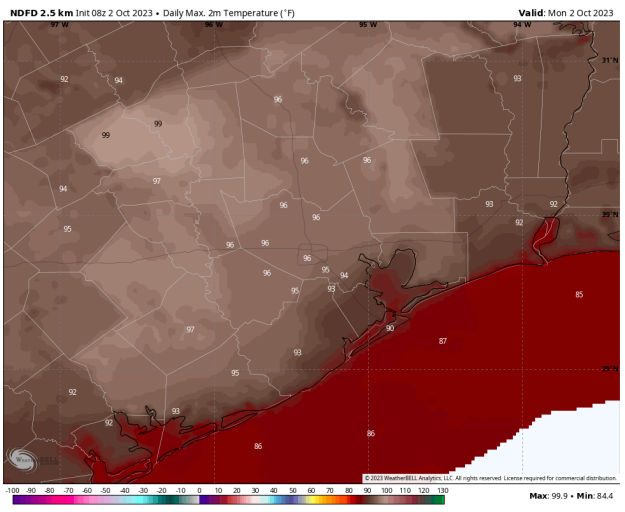
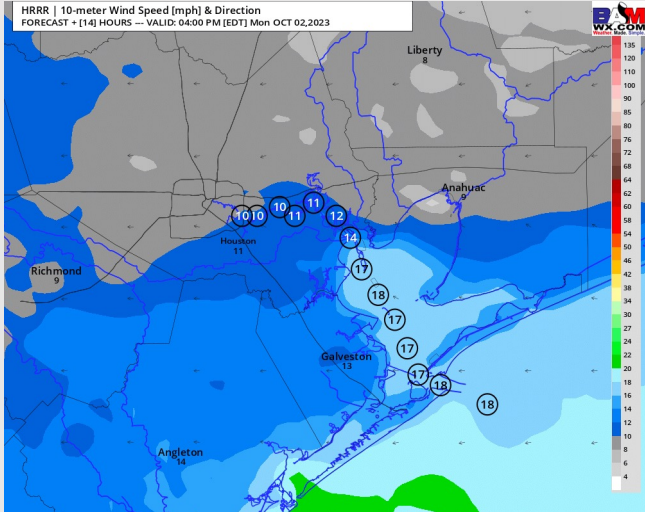
**High Temps:** N of Morgan's Point: Mid 90s F. S of Morgan's Point: Upper 80s F.

**Visibility:** No visibility concerns expected for today.

## Precip Image: 3 PM CT



Wind Speed:  
3 PM CT



High Temps  
Today

# Houston Pilots: Tue. 10/3/2023



## Forecast Discussion

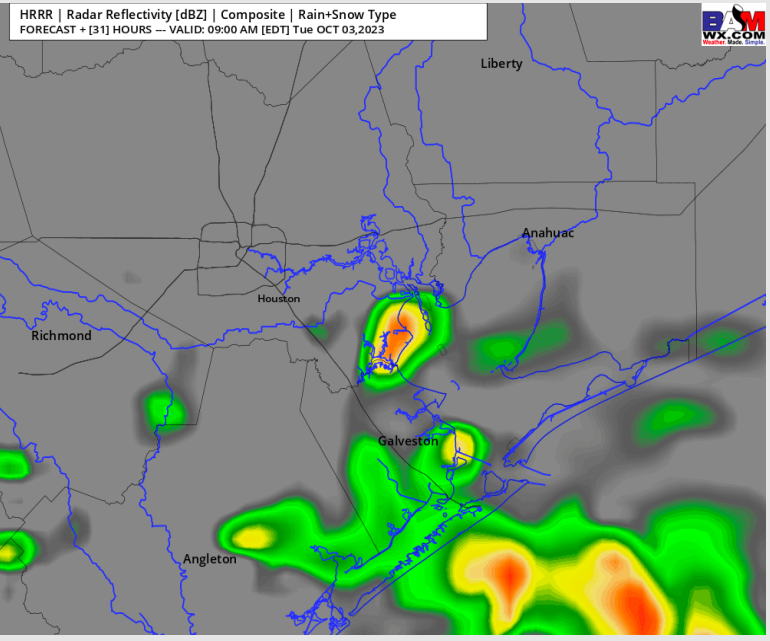
**Precip:** Stations S of 11/12 will see low-end isolated shower chances (20%) starting at 3 AM. Chances then increase to 30-40% for all stations towards 7 AM through 5 PM. Towards 5 PM - 8 PM showers will taper off to a drizzle before rain chances cease shortly after 8 PM.

**Wind:** Winds will be out of the ESE to SE throughout the day. For Stations N of Morgan's Point, winds will begin the day relatively calm at 2-7 kts but will gradually increase to 7-12 kts by 10 AM and will decrease to 3-8 kts by 9 PM. Winds S of Morgan's Point will be 13-18 kts throughout the day. **Gusts reaching 22 - 25 kts will be possible near the Boarding Station near 7 AM with a few gusty thunderstorms.**

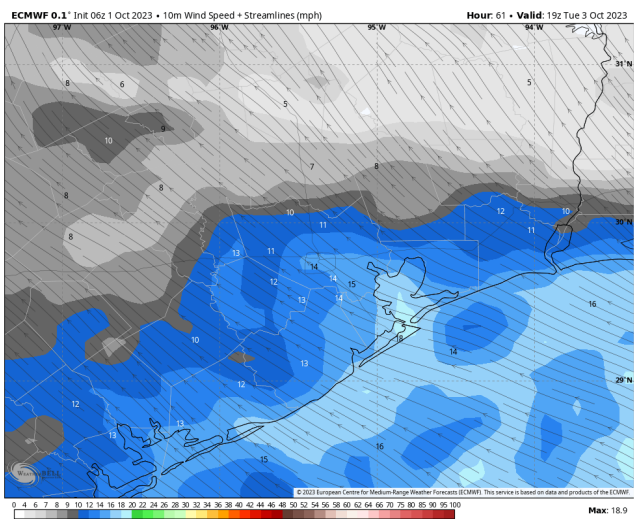
**High Temps:** N of Morgan's Point: Upper 80s to 90 F. S of Morgan's Point: Mid to upper 80s F.

**Visibility:** Not anticipating any visibility issues at this time.

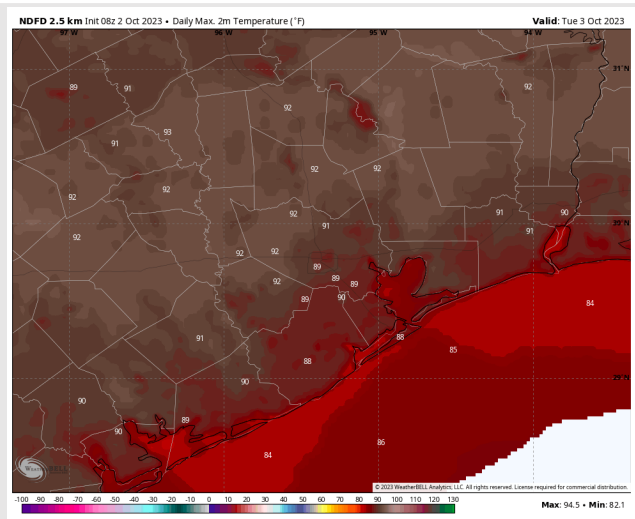
## Precip Image: 8 AM CT



Wind Speed:  
2 PM CT



High Temps  
Tuesday



## Forecast Discussion

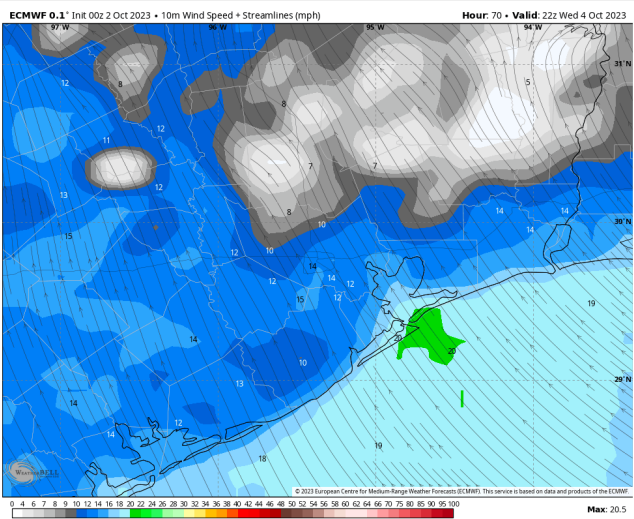
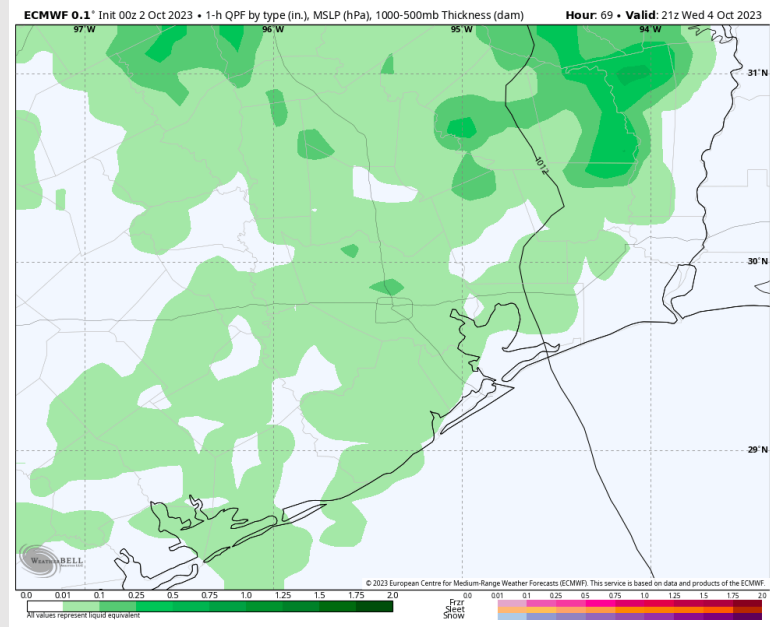
**Precip:** Isolated shower chances will be at play in the AM across all stations (20%). Towards 12 PM coverage will expand more to create scattered chances (30-40%) across all stations for the PM before coverage tapers off near 7 PM.

**Wind:** Winds will be out of the SE on Wednesday. For Stations **N of Morgan's Point**, winds will be at 2-7 kts but will gradually increase to 7-12 kts by 11 AM. Winds slightly decrease to 5 - 10 kts after 9 PM. Winds **S of Morgan's Point** will be 13-18 kts throughout the day. **Gusts reaching 20 - 22 kts will be possible near the Boarding Station after 5 PM.**

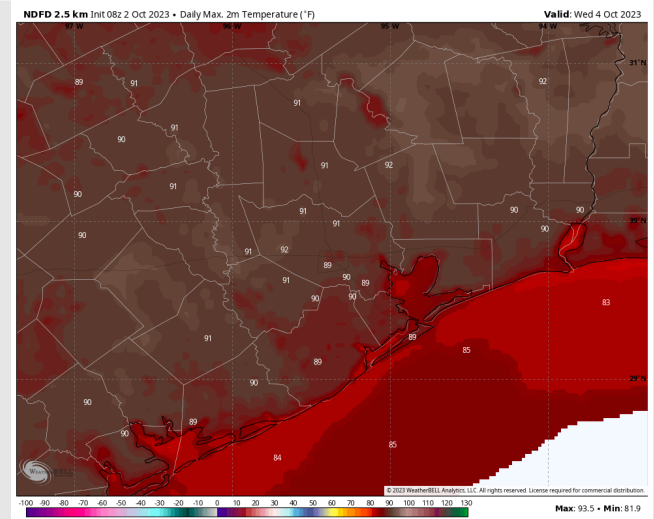
**High Temps:** **N of Morgan's Point:** Upper 80s to near 90 F. **S of Morgan's Point:** Mid to upper 80s F.

**Visibility:** Not anticipating any visibility issues currently.

## Precip Image: 4 PM CT

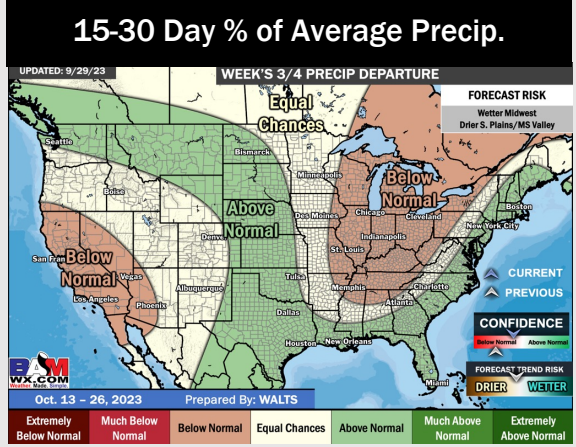
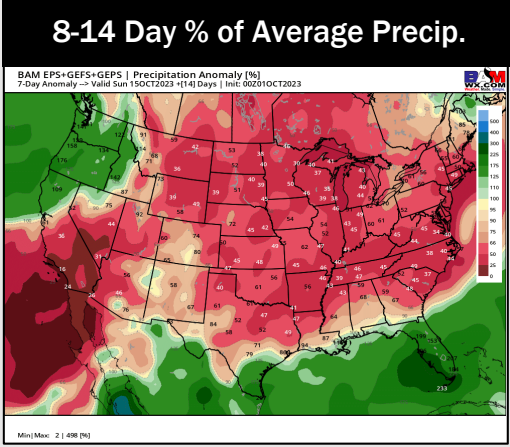
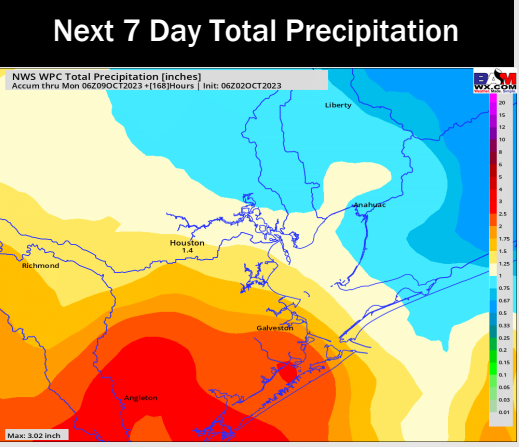
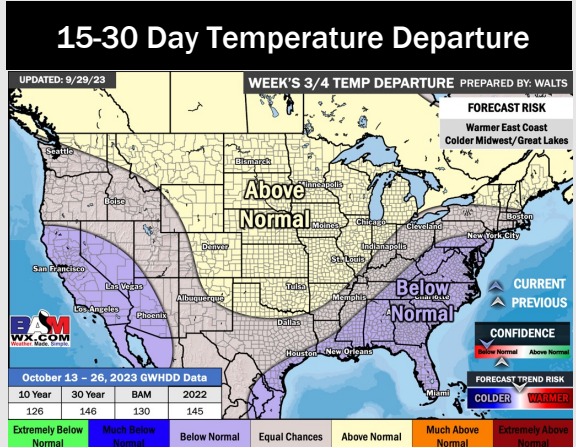
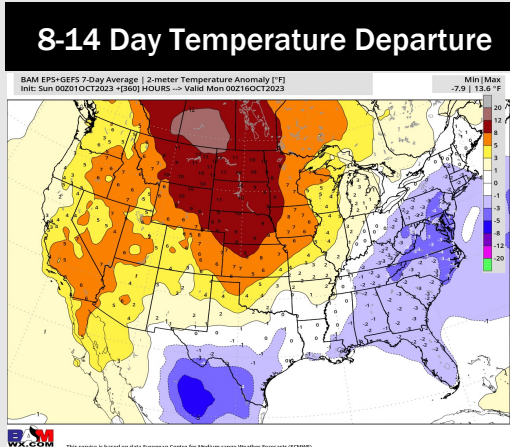
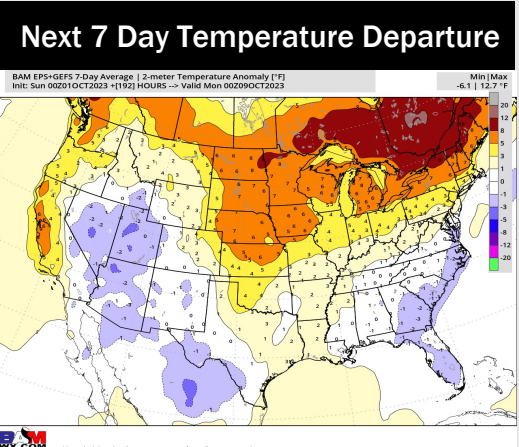


**Wind Speed:  
5 PM CT**



**High Temps  
Wednesday**

# Houston Pilots: 10/2/23



- Very isolated shower chances at play for the Boarding Station today. Spotty shower chances look to be at play for every day this week. A cold front on Thu/Fri will look to cool temps. Until then, Temperatures will remain slightly above normal.
- Generally drier/slightly colder than average temperatures are expected into the week 2 timeframe.
- Below normal temperatures and above normal chances for precipitation are favored in the weeks 3/4 timeframe.