

Houston Pilots Forecast Package



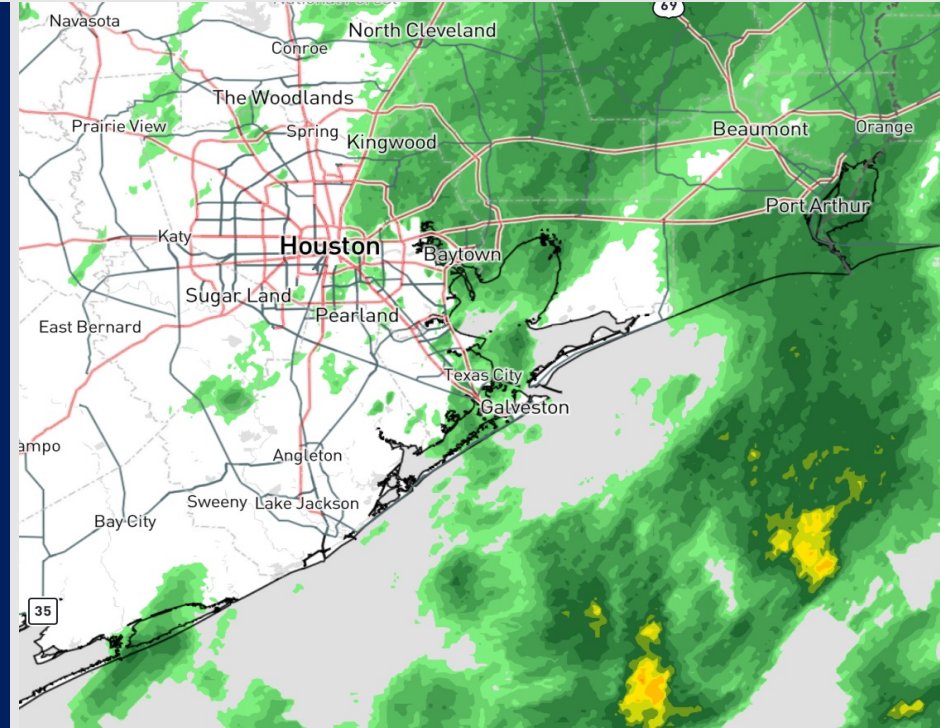
Updated: 2:00 PM CT

Wednesday, October 11, 2023

Forecaster: Alyssa Elliott

Weather Headlines

- Scattered rain showers continue this afternoon before gradually tapering off this evening.
- More details on the daily slide below (automated wind chart likely underdone), but gusts at the Boarding Station of 23-28 knots will be possible through ~4PM.
- **Wave heights currently reaching 5 - 7 ft at the Boarding Station where they are expected to remain until 5 PM. Wave heights for all other stations are not expected to exceed 3 feet at this time.**



Radar/NWS Alerts: 1:15 PM CT



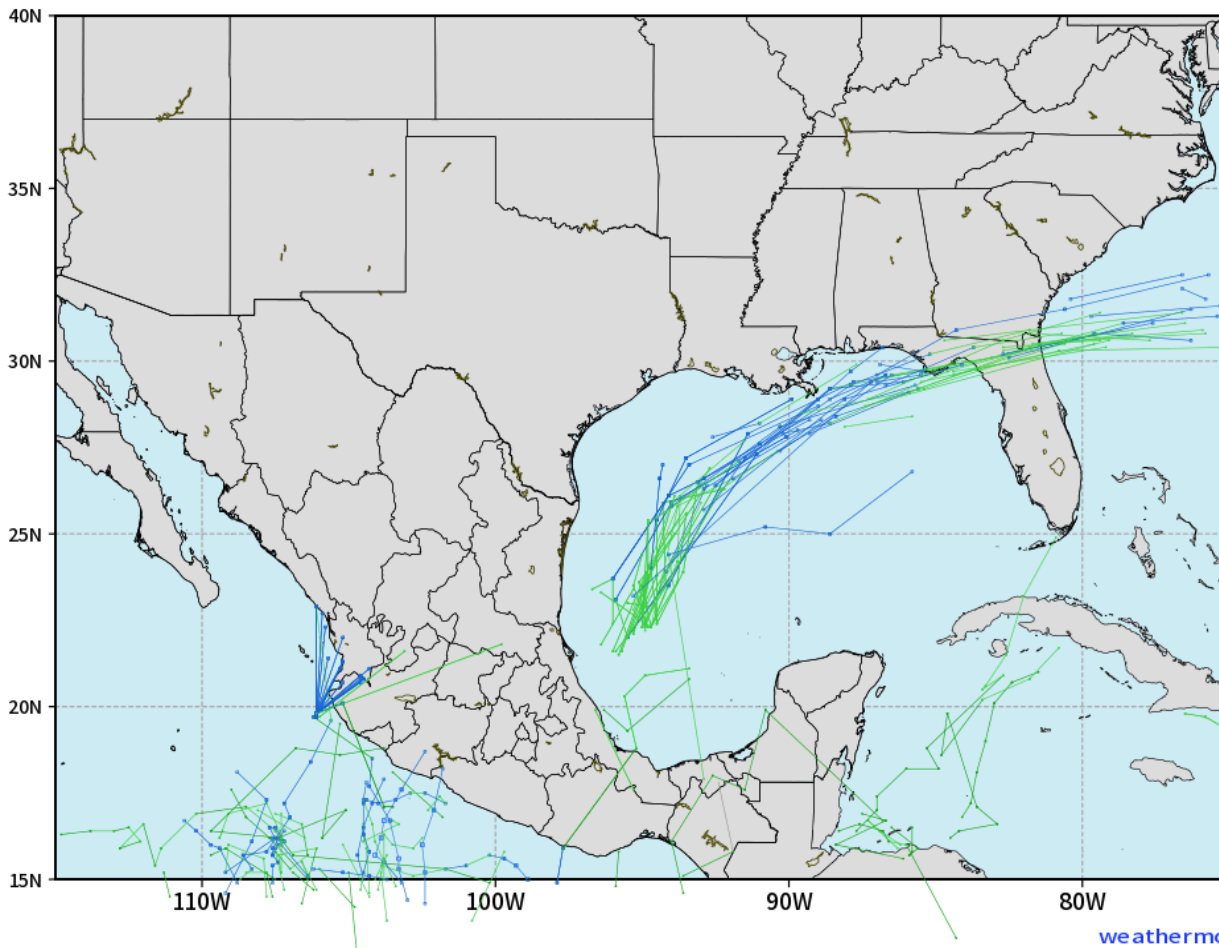
As always, please do not hesitate to reach out to us with any forecast questions via the chat option on the Weather Porthole or our on-call number, **(317)-560-8122** press 1 for forecast questions.

Houston Pilots Tropical Update

European Model Next 10 Days Tropical Tracks

ECMWF GULF EPS Cyclone Locations --> Next [10-days]
INIT: 00Z11OCT2023 --> UNTIL 00Z21OCT2023

o-o ENSEMBLE MEAN
o-o 1000 - 1010 hPa
o-o 980 - 999 hPa
o-o 960 - 979 hPa
o-o 950 - 959 hPa
o-o < 950 hPa



weathermodels.com

An area of unsettled tropical activity working through the Gulf will continue to slide East of SE TX.

This is not favored to reach Tropical Storm status and after today (WED), no impacts will be felt in SE TX. No threats beyond this.

Houston Pilots Visibility Chart (miles)



Time	Wed 1pm	Wed 2pm	Wed 3pm	Wed 4pm	Wed 5pm	Wed 6pm	Wed 7pm	Wed 8pm	Wed 9pm	Wed 10pm	Wed 11pm	Thu 12am	Thu 1am	Thu 2am	Thu 3am	Thu 4am	Thu 5am	Thu 6am	Thu 7am	Thu 8am	Thu 9am	Thu 10am	Thu 11am	Thu 12pm	Thu 1pm	Thu 2pm	Thu 3pm	Thu 4pm	Thu 5pm	Thu 6pm	Thu 7pm	Thu 8pm	Thu 9pm	Thu 10pm	Thu 11pm	Fri 12am	
610 Bridge	10	10	10	10	10	10	10	10	10	10	10	10	10	10	9	7	6	6	6	6	10	10	10	10	10	10	10	10	10	10	10	10	10	10	10	10	10
Kinder 1	10	10	10	10	10	10	10	10	10	10	10	10	10	10	9	7	7	6	6	6	10	10	10	10	10	10	10	10	10	10	10	10	10	10	10	10	10
Greens Bayou	10	10	10	10	10	10	10	10	10	10	10	10	10	10	8	8	8	7	7	8	10	10	10	10	10	10	10	10	10	10	10	10	10	10	10	10	10
Shell Crude	10	10	10	10	10	10	10	10	10	10	10	10	10	10	9	8	8	8	8	8	9	10	10	10	10	10	10	10	10	10	10	10	10	10	10	10	10
Lynchburg Ferries	10	10	10	10	10	10	10	10	10	10	10	10	10	10	8	8	8	8	8	8	9	10	10	10	10	10	10	10	10	10	10	10	10	10	10	10	10
Exxon 3	10	10	10	10	10	10	10	10	10	10	10	10	10	10	9	8	8	8	8	8	9	10	10	10	10	10	10	10	10	10	10	10	10	10	10	10	10
Morgans Point	10	10	10	10	10	10	10	10	10	10	10	10	10	10	9	8	8	8	8	8	9	10	10	10	10	10	10	10	10	10	10	10	10	10	10	10	10
75/76	10	10	10	10	10	10	10	10	10	10	10	10	10	10	9	8	8	8	8	8	9	10	10	10	10	10	10	10	10	10	10	10	10	10	10	10	10
63/64	10	10	10	10	10	10	10	10	10	10	10	10	10	10	9	8	8	9	8	9	10	10	10	10	10	10	10	10	10	10	10	10	10	10	10	10	10
51/52	10	10	10	10	10	10	10	10	10	10	10	10	10	10	9	9	9	9	8	9	10	10	10	10	10	10	10	10	10	10	10	10	10	10	10	10	10
37/38	10	10	10	10	10	10	10	10	10	10	10	10	10	10	9	10	10	8	10	10	10	10	10	10	10	10	10	10	10	10	10	10	10	10	10	10	10
25/26	10	10	10	10	10	10	10	10	10	10	10	10	10	10	9	10	10	10	10	10	10	10	10	10	10	10	10	10	10	10	10	10	10	10	10	10	10
11/12	10	10	10	10	10	10	10	10	10	10	10	10	10	10	9	10	10	10	10	10	10	10	10	10	10	10	10	10	10	10	10	10	10	10	10	10	10
1 & 2 Bravo	9	10	10	10	10	10	10	10	10	10	10	10	10	10	9	9	10	10	10	10	10	10	10	10	10	10	10	10	10	10	10	10	10	10	10	10	

NOTE: This is automated data that may/may not agree with the official BAM thinking that's found on the daily slides or special visibility report slides. This data should be used as a guide only

Houston Pilots Wind Chart



Forecast Confidence



Example

Sustained wind 13 Knots
Gusts 18 Knots
Wind from the N

WS: 13
G:18
N

Time Knots	Wed 1pm	Wed 2pm	Wed 3pm	Wed 4pm	Wed 5pm	Wed 6pm	Wed 7pm	Wed 8pm	Wed 9pm	Wed 10pm	Wed 11pm	Thu 12am	Thu 1am	Thu 2am	Thu 3am	Thu 4am	Thu 5am	Thu 6am	Thu 7am	Thu 8am	Thu 9am	Thu 10am	Thu 11am	Thu 12pm	Thu 1pm	Thu 2pm	Thu 3pm	Thu 4pm	Thu 5pm	Thu 6pm	Thu 7pm	Thu 8pm	Thu 9pm	Thu 10pm	Thu 11pm	Thu 12am	Fri 12am
610 Bridge	10	8	8	8	7	7	6	4	4	4	4	3	3	3	3	4	3	3	3	3	3	4	5	5	5	5	6	6	7	8	7	7	6	5	5	4	
	15	12	12	12	12	10	9	7	7	7	6	5	5	5	5	5	4	5	5	4	5	5	6	7	6	6	7	9	10	11	11	10	9	8	7	6	
Kinder 1	E	ENE	ENE	ENE	E	E	ENE	ENE	ENE	E	ENE	ENE	ENE	ENE	ENE	ENE	ENE	ENE	ENE	ENE	E	E	ESE	ESE	SE	SE	SE	SE	SE	SE	SE	SSE	SE	SSE	SSE		
	10	8	8	8	7	6	5	4	4	4	3	3	3	3	3	3	3	3	3	3	4	4	5	5	5	5	6	7	8	9	10	10	8	7	5	4	
Greens Bayou	15	12	12	12	12	10	9	7	7	7	6	5	5	5	5	5	5	5	4	5	5	6	7	6	6	6	8	9	10	10	10	8	7	7	6		
	E	ENE	ENE	ENE	E	ENE	ENE	ENE	ENE	ENE	ENE	ENE	ENE	ENE	ENE	ENE	ENE	ENE	ENE	ENE	E	E	ESE	ESE	SE	SE	SE	SE	SE	SE	SE	SSE	SE	SSE	SSE		
Shell Crude	10	8	8	8	8	7	6	5	5	4	4	4	4	4	3	3	3	3	3	3	4	5	5	5	5	6	7	8	8	8	7	6	5	5	4		
	15	13	12	12	12	10	9	8	7	7	7	6	6	6	5	5	5	4	5	6	6	6	7	6	6	6	7	8	9	10	10	9	8	7	7	6	
Lynchburg Ferries	E	ENE	ENE	ENE	E	ENE	ENE	ENE	ENE	ENE	ENE	ENE	ENE	ENE	ENE	ENE	ENE	ENE	ENE	ENE	E	E	ESE	ESE	SE	SE	SE	SE	SE	SE	SE	SSE	SE	SSE	SSE		
	10	8	9	8	8	7	6	6	5	5	5	4	4	4	4	4	4	4	4	4	4	5	5	5	5	6	7	8	9	8	7	6	5	5	5		
Exxon 3	15	13	13	12	12	10	7	6	6	6	6	5	5	5	5	5	4	4	5	5	5	6	5	5	5	6	7	8	9	9	8	7	6	6	5		
	E	ENE	ENE	ENE	ENE	ENE	ENE	ENE	ENE	ENE	ENE	ENE	ENE	ENE	ENE	ENE	ENE	ENE	ENE	ENE	E	E	ESE	ESE	SE	SE	SE	SE	SE	SE	SE	SE	SE	SE	SSE		
Morgans Point	12	10	10	10	11	10	9	8	8	7	7	7	6	6	6	6	6	6	6	6	6	7	6	6	6	7	8	9	10	10	9	8	7	7	7		
	16	14	13	13	13	12	11	10	10	9	9	8	8	8	8	8	7	7	7	7	7	8	8	7	7	7	8	9	10	11	12	11	10	9	9	9	
75/76	E	ENE	ENE	ENE	ENE	ENE	ENE	ENE	ENE	ENE	ENE	ENE	ENE	ENE	ENE	ENE	ENE	ENE	ENE	ENE	E	E	ESE	ESE	SE	SE	SE	SE	SE	SE	SE	SE	SE	SE	SSE		
	15	12	12	12	12	12	11	11	10	10	9	9	9	9	9	9	8	8	8	8	8	8	8	8	8	8	9	10	11	12	13	13	12	11	10	9	10
63/64	E	ENE	ENE	ENE	ENE	ENE	ENE	ENE	ENE	ENE	ENE	ENE	ENE	ENE	ENE	ENE	ENE	ENE	ENE	ENE	E	E	E	E	ESE	ESE	SE	SE	SE	SE	SE	SE	SE	SE	SSE		
	16	14	13	13	13	13	12	12	11	11	11	10	10	9	9	9	9	9	9	9	9	9	8	7	6	6	7	8	9	10	11	11	10	9	9	10	
51/52	18	16	15	14	14	14	13	12	12	11	11	10	10	9	9	9	9	9	9	9	9	9	9	8	8	8	8	9	10	11	12	11	10	9	9	10	
	E	ENE	NE	ENE	ENE	ENE	ENE	ENE	ENE	ENE	ENE	ENE	ENE	ENE	ENE	ENE	ENE	ENE	ENE	ENE	E	E	E	E	ESE	ESE	SE	SE	SE	SE	SE	SE	SE	SE	SE		
37/38	17	15	14	13	13	13	12	11	10	9	9	8	8	8	8	8	7	7	7	7	8	8	8	7	7	7	7	8	9	9	8	8	8	8	8		
	19	17	15	14	14	14	13	12	11	10	10	9	9	8	8	8	8	8	8	8	8	8	8	8	8	8	9	10	10	9	8	8	8	8	9	9	
25/26	E	ENE	ENE	ENE	ENE	ENE	ENE	NE	NE	NE	NE	ENE	ENE	ENE	ENE	ENE	ENE	ENE	ENE	ENE	E	E	E	E	ESE	ESE	ESE	ESE	SE	SE	SE	SE	SE	SE	SE		
	17	15	14	13	12	12	11	10	9	8	8	8	7	7	7	6	6	6	6	7	7	8	7	7	7	7	8	8	8	8	8	8	8	7	7	7	
11/12	19	17	15	15	14	13	12	11	10	10	9	9	8	8	7	7	7	7	7	7	7	8	8	8	8	8	8	8	8	8	8	8	8	8	8	8	
	E	ENE	ENE	ENE	ENE	ENE	NE	NE	NE	NE	NE	ENE	ENE	ENE	ENE	ENE	ENE	ENE	ENE	ENE	E	E	E	E	ESE	ESE	ESE	ESE	SE	SE	SE	SE	SE	SE	SE	SE	
1 & 2 Bravo	18	16	14	14	13	12	11	10	10	9	8	8	8	7	7	7	7	7	7	7	7	8	8	8	8	8	8	8	8	8	8	8	8	8	8	8	
	21	19	17	16	15	14	13	12	12	11	10	9	9	9	8	8	8	8	8	8	8	8	9	9	8	8	8	8	8	8	8	8	8	8	8	8	
	23	21	19	18	17	16	14	14	13	12	12	11	10	10	9	9	9	9	9	9	9	10	9	9	9	8	8	8	8	8	8	8	8	8	8		
	E	ENE	ENE	ENE	ENE	ENE	NE	NE	NE	NE	ENE	ENE	ENE	ENE	ENE	ENE	ENE	ENE	ENE	ENE	E	E	E	E	E	E	E	ESE	ESE	ESE	SE	SE	SE	SE	SE	SE	

NOTE: This is automated data that may/may not agree with the official BAM thinking that's found on the daily slides. This data should be used as a guide only

Forecast Discussion

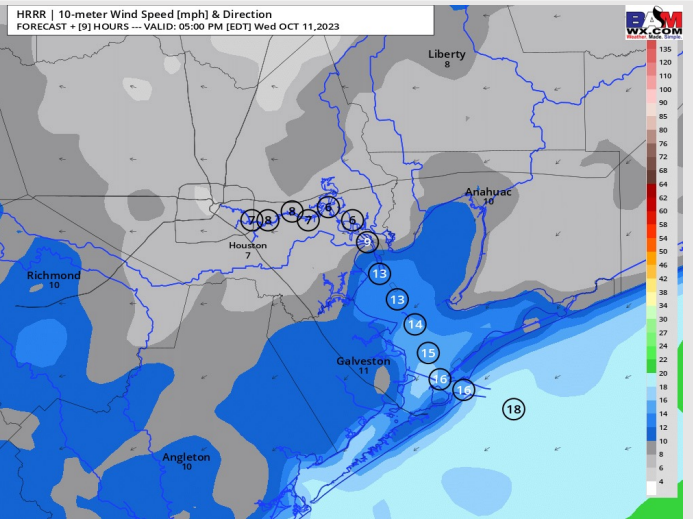
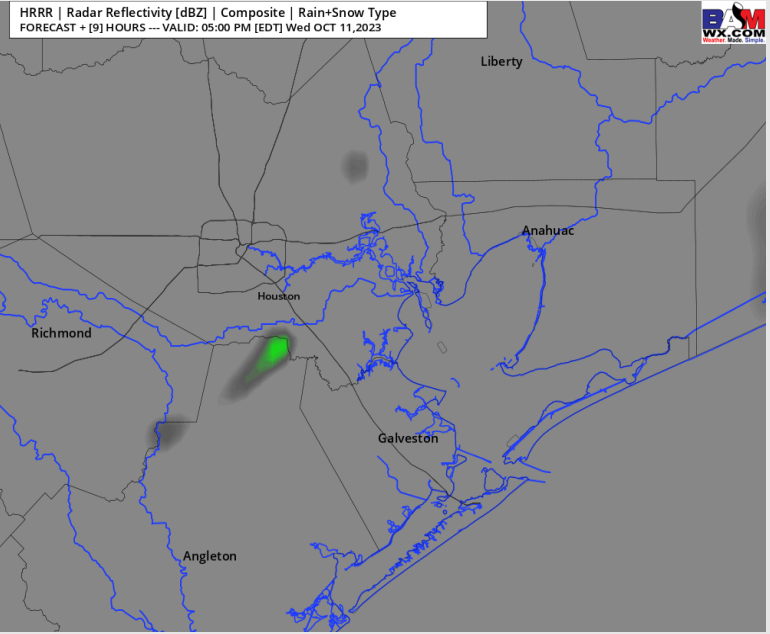
Precip: From now through 4 PM, expect shower coverage to be more scattered, with coverage from 4 - 6 PM becoming more isolated. Dry conditions will be favored for all locations after 7PM.

Wind: Winds will be out of the E / ENE throughout the day. For Stations **N of Morgan's Point**, winds will be at 10-15 kts through 3 PM, then dropping to 3 - 8 kts after 3 PM. Winds **S of Morgan's Point** will sit around 23-28 kts through 4 PM, then will drop to 10 - 15 kts for the evening. **Winds at the Boarding Station and 11/12** are at risk for higher sustained winds of 15 - 20 kts from 4 - 8 PM. **Gusts of 23 - 28 kts through 4 PM. Due to elevated wind gusts, wave heights of 5 - 7 feet will be possible for the Boarding Station through 5 PM.**

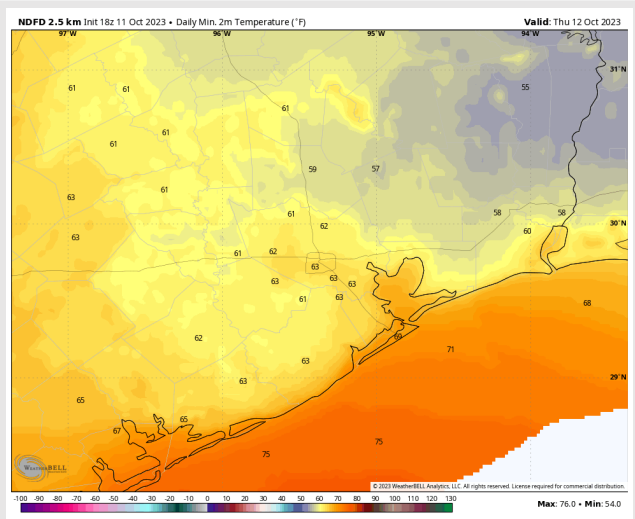
Low Temps: **N of Morgan's Point:** Low 60s F. **S of Morgan's Point:** Near 70 F.

Visibility: Not anticipating any visibility concerns at this time.

Precip Image: 4 PM CT



**Wind Speeds:
4 PM CT**



**Low Temps
Thursday AM**

Houston Pilots: Thu. 10/12/2023



Forecast Discussion

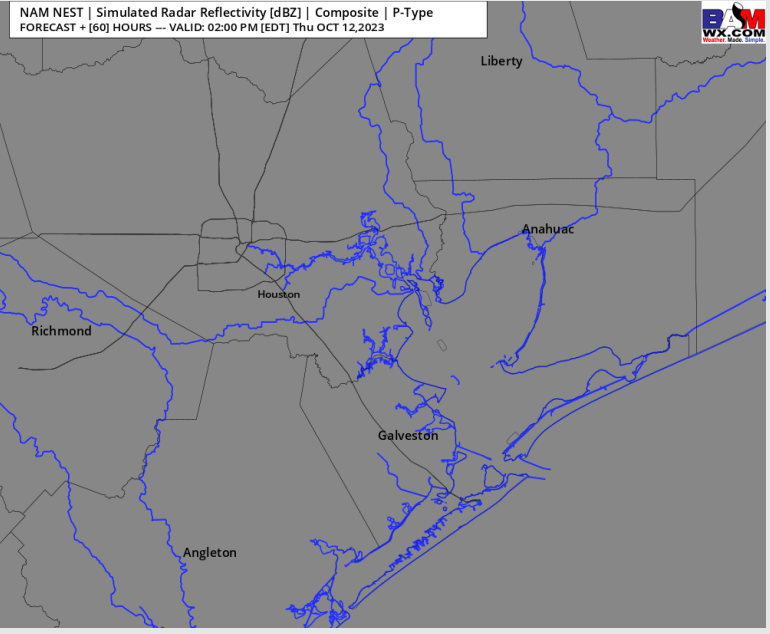
Precip: Favoring dry conditions for all locations for Thursday.

Wind: Winds start out of the ENE through 11 AM before turning out of the SE for the majority of the day. For Stations **N of Morgan's Point**, winds will be at 3-6 kts, increasing to 5 -10 kts towards noon. Winds **S of Morgan's Point** will remain at 8-13 kts for most of the day before weakening to 6 - 11 kts after 10PM.

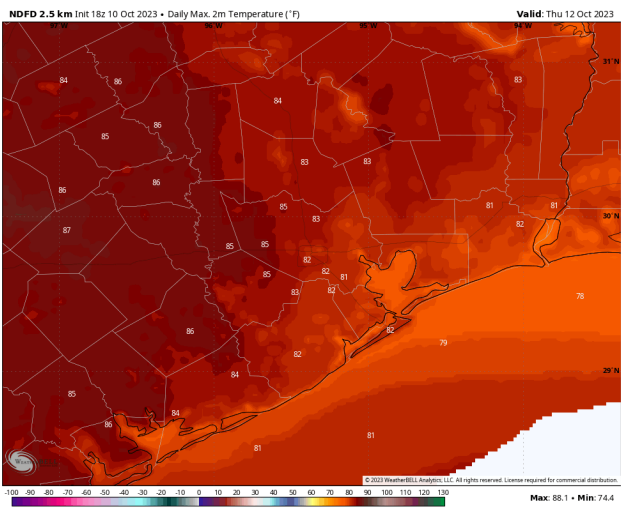
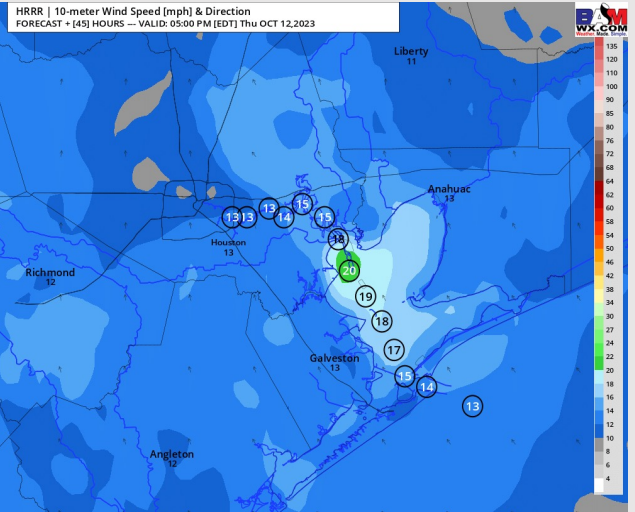
High Temps: **N of Morgan's Point:** Lower to Mid 80's. **S of Morgan's Point:** Upper 70's.

Visibility: Not anticipating any visibility issues at this time.

Precip Image: 1 PM CT



Wind Speed:
4 PM CT



High Temps
Thursday

Houston Pilots: Fri. 10/13/2023



Forecast Discussion

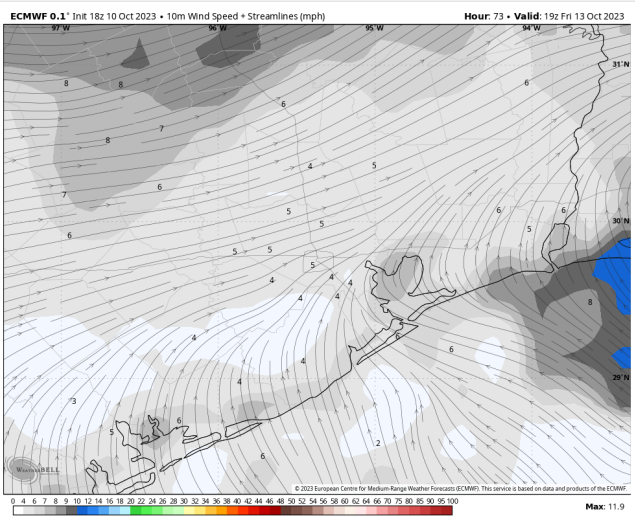
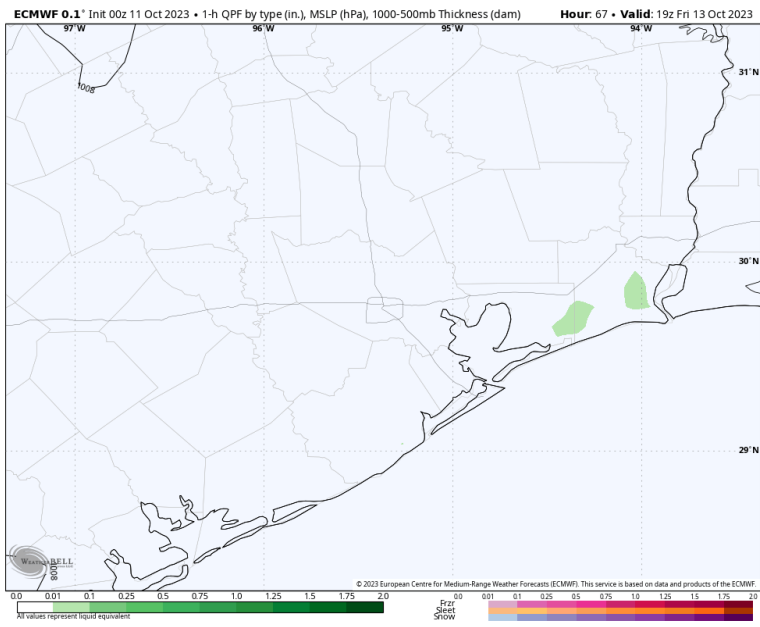
Precip: The overwhelming majority of the day will be dry. Chances for a few isolated showers/ rumbles of thunder will be on the table between 2 – 5 PM. These chances are ~10-20%. Most, if not all, of the day will be dry.

Wind: Winds will be out of the S/SE throughout the majority of the day. Sustained winds for all locations will be from 5-10kts, with winds decreasing to 3-8kts after 2PM, and sustained winds gradually veering out of the south fully.

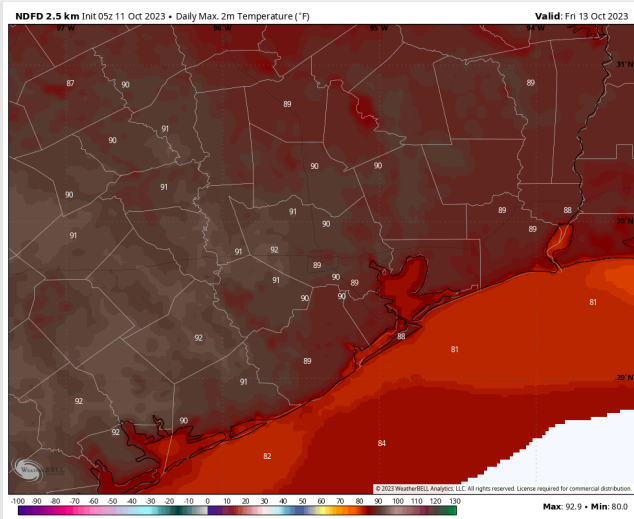
Low Temps: N of Morgan's Point: Upper 80s F. S of Morgan's Point: Lower 80s

Visibility: Not anticipating any visibility issues currently.

Precip Image: 2 PM CT



Wind Speed:
5 PM CT

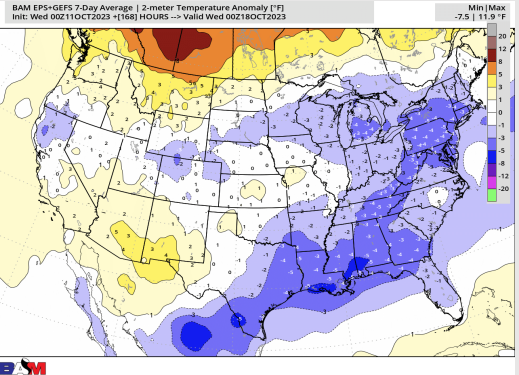


High Temps
Friday

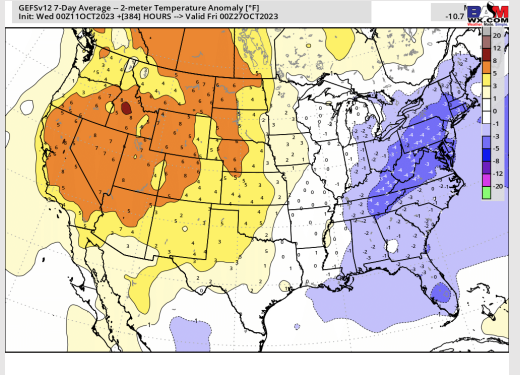
Houston Pilots: 10/11/23



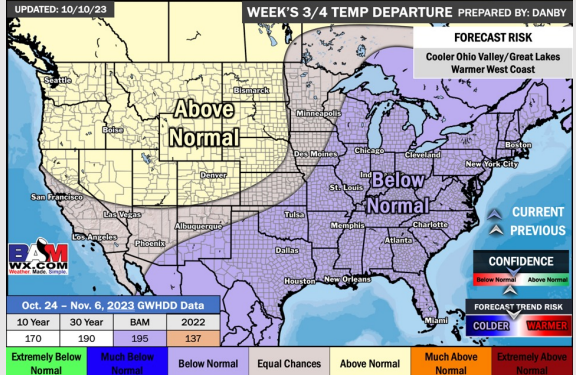
Next 7 Day Temperature Departure



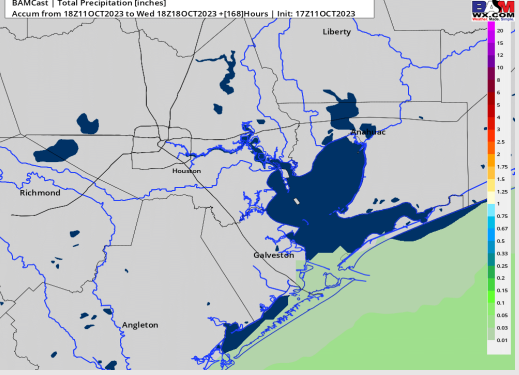
8-14 Day Temperature Departure



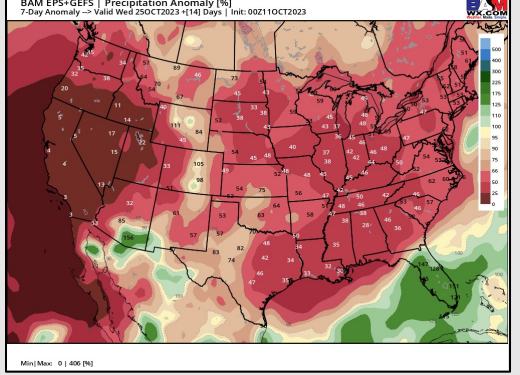
15-30 Day Temperature Departure



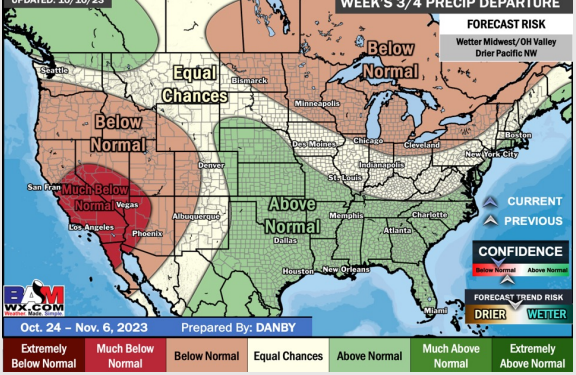
Next 7 Day Total Precipitation



8-14 Day % of Average Precip.



15-30 Day % of Average Precip.



- Low end rain chances as the low pressure system exits the HOU area. Isolated rain chances will be possible through Friday before the weekend dries out. Temperatures are favored to remain below normal this week.
- Generally drier and new to slightly above normal temperatures are expected into the week 2 timeframe.
- Below normal temperatures and above normal chances for precipitation are favored in the weeks 3/4 timeframe.