

# Houston Pilots Forecast Package



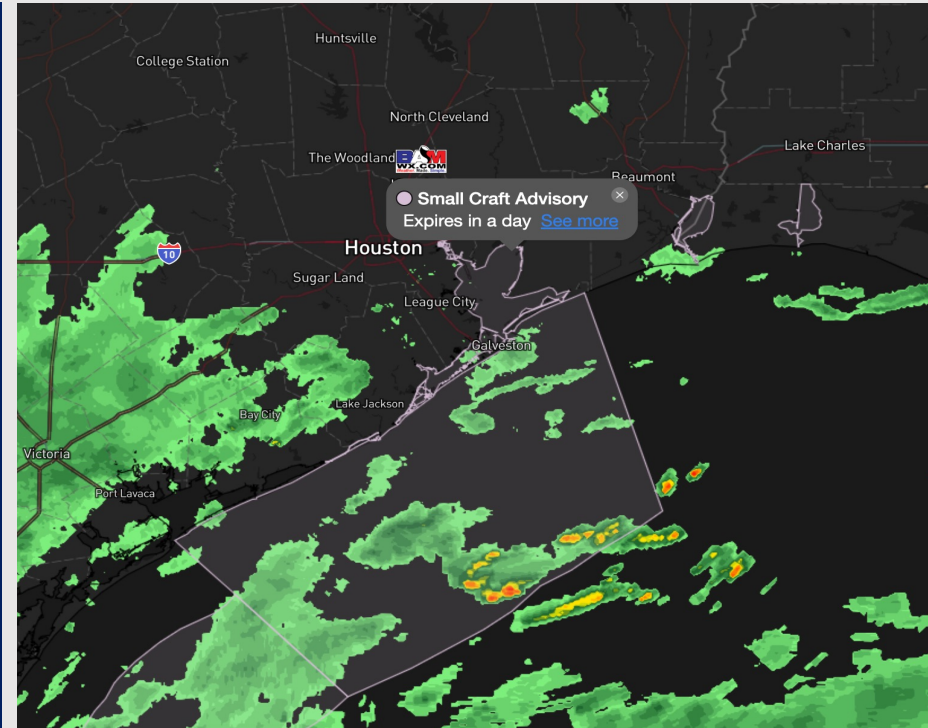
Updated: 9:30 PM CT

Tuesday, October 10, 2023

Forecaster: John Kemper

## Weather Headlines

- Scattered to Widespread chances of rain are expected to continue through Wednesday PM / Thursday AM
- Winds to increase as a very weak tropical system eventually pushes northeast towards FL. **In the afternoon on WED, a few gusts of up to 25 kts are possible.**
- **Wave Heights for the Boarding Station of up to 5 - 7 feet will be possible Wednesday from 7AM-7PM. Wave heights for all other stations are not expected to exceed 3 feet at this time.**



**Radar/NWS Alerts: 9:15 PM CT**

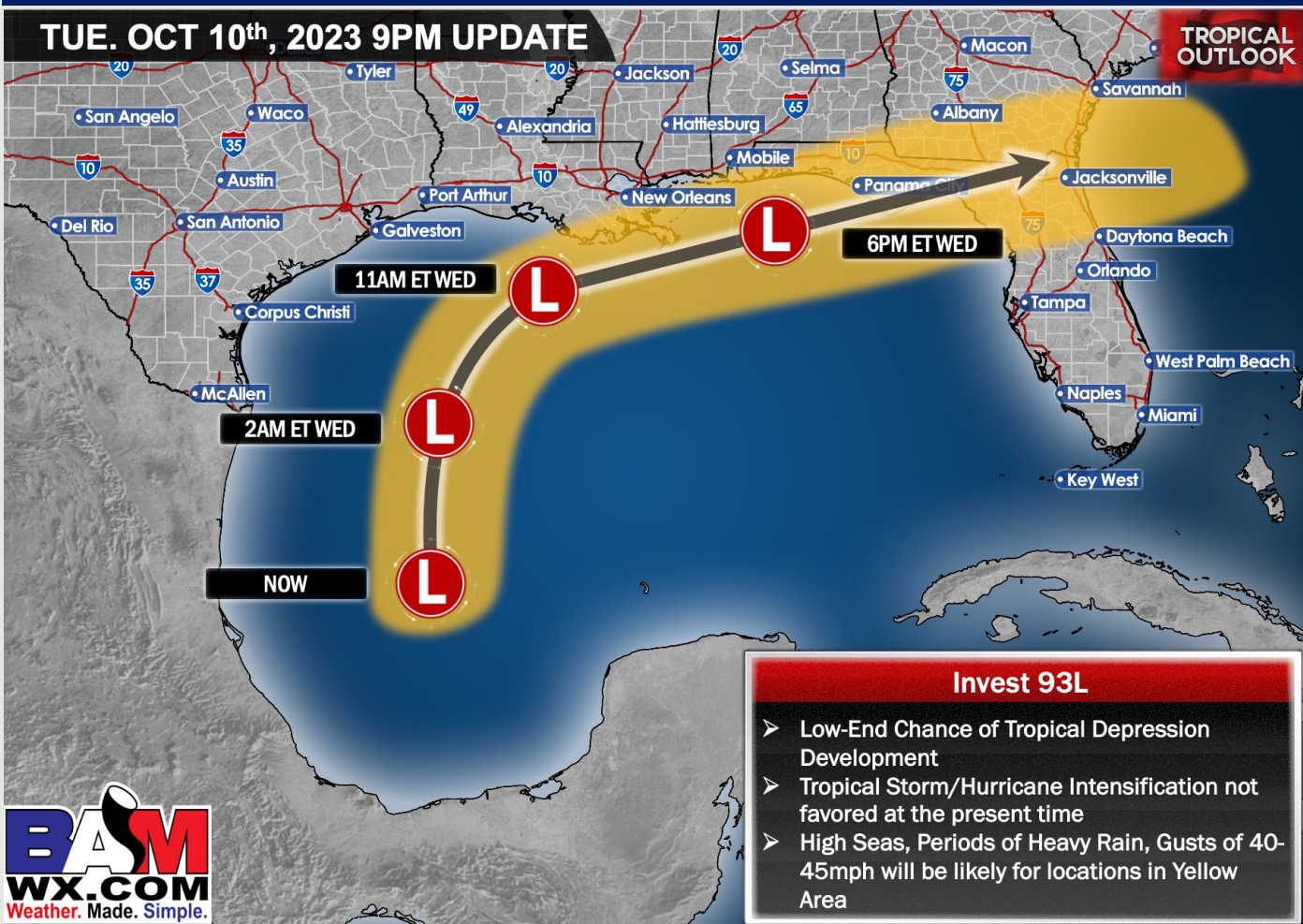


As always, please do not hesitate to reach out to us with any forecast questions via the chat option on the Weather Porthole or our on-call number, **(317)-560-8122** press 1 for forecast questions.

# Houston Pilots Tropical Update

## Invest 93L General Track / Associated Hazards

TUE. OCT 10<sup>th</sup>, 2023 9PM UPDATE



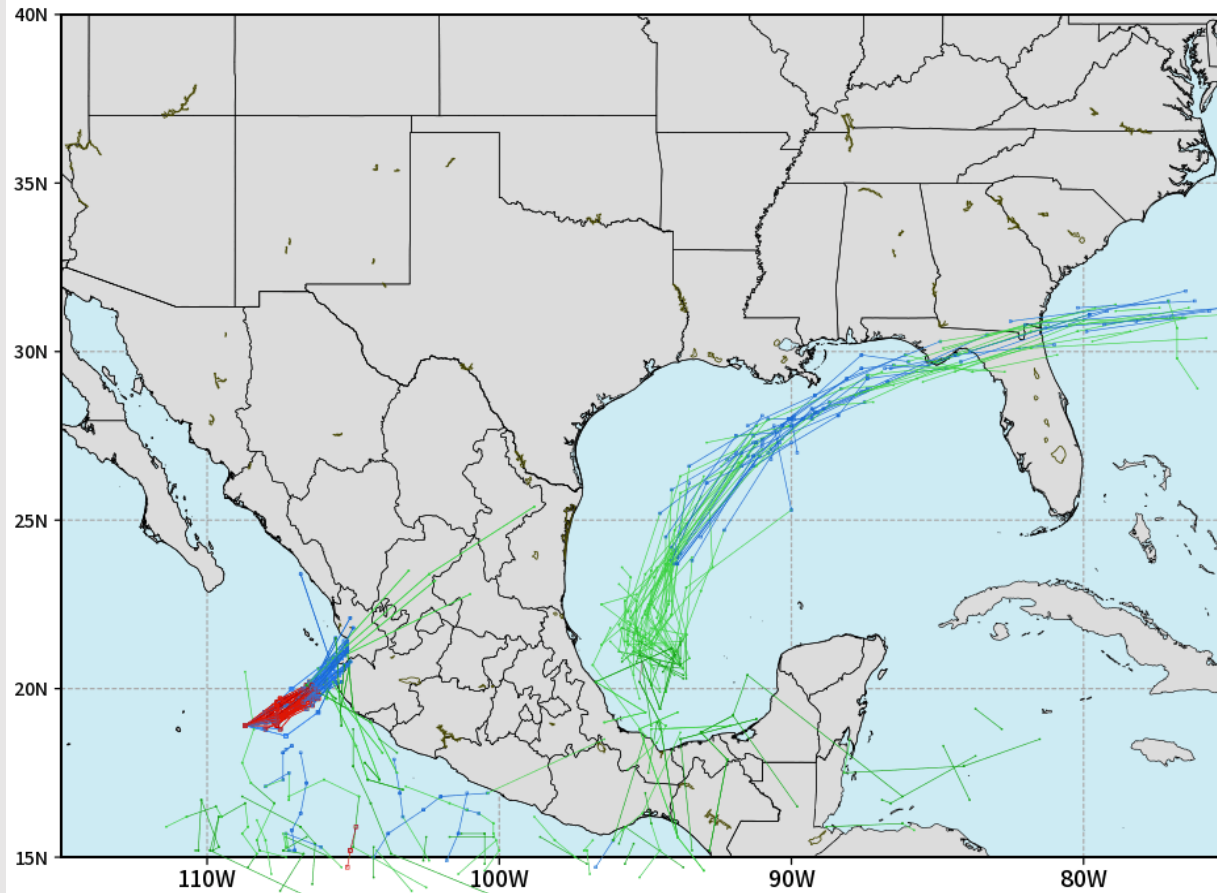
Favoring this system to remain to the east of all stations. Low-end chances this low pressure system can develop into a tropical depression, but at this time is not favored to reach tropical storm/hurricane status.

# Houston Pilots Tropical Update

## European Model Next 10 Days Tropical Tracks

ECMWF GULF EPS Cyclone Locations --> Next [10-days]  
INIT: 12Z10OCT2023 --> UNTIL 12Z20OCT2023

o-o ENSEMBLE MEAN  
o-o 1000 - 1010 hPa  
o-o 980 - 999 hPa  
o-o 960 - 979 hPa  
o-o 950 - 959 hPa  
o-o < 950 hPa



[weathermodels.com](http://weathermodels.com)

Aside from tropical system developing SE of Houston that is favored to move off to the northeast / east, no additional tropical threats favored over the next 7 days.

# Houston Pilots Visibility Chart (miles)



Time	Tue 8pm	Tue 9pm	Tue 10pm	Tue 11pm	Wed 12am	Wed 1am	Wed 2am	Wed 3am	Wed 4am	Wed 5am	Wed 6am	Wed 7am	Wed 8am	Wed 9am	Wed 10am	Wed 11am	Wed 12pm	Wed 1pm	Wed 2pm	Wed 3pm	Wed 4pm	Wed 5pm	Wed 6pm	Wed 7pm	Wed 8pm	Wed 9pm	Wed 10pm	Wed 11pm	Thu 12am	Thu 1am	Thu 2am	Thu 3am	Thu 4am	Thu 5am	Thu 6am	Thu 7am			
610 Bridge	10	10	10	10	10	10	10	10	10	10	10	10	10	10	10	10	10	10	10	10	10	10	10	10	10	10	10	10	10	10	10	10	10	10	10	8	7	7	7
Kinder 1	10	10	10	10	10	10	10	10	10	10	10	10	10	10	10	10	10	10	10	10	10	10	10	10	10	10	10	10	10	10	10	10	10	10	10	8	7	7	7
Greens Bayou	10	10	10	10	10	10	10	10	10	10	10	10	10	10	10	10	10	10	10	10	10	10	10	10	10	10	10	10	10	10	10	10	10	10	10	8	8	7	8
Shell Crude	10	10	10	10	10	10	10	10	10	10	10	10	10	10	10	10	10	10	10	10	10	10	10	10	10	10	10	10	10	10	10	10	10	10	10	8	8	8	8
Lynchburg Ferries	10	10	10	10	10	10	10	10	10	10	10	10	10	10	10	10	10	10	10	10	10	10	10	10	10	10	10	10	10	10	10	10	10	10	10	8	8	8	8
Exxon 3	10	10	10	10	10	10	10	10	10	10	10	10	10	10	10	10	10	10	10	10	10	10	10	10	10	10	10	10	10	10	10	10	10	10	10	8	8	8	8
Morgans Point	10	10	10	10	10	10	10	10	10	10	10	10	10	10	10	10	10	10	10	10	10	10	10	10	10	10	10	10	10	10	10	10	10	10	10	8	8	8	8
75/76	10	10	10	10	10	10	10	10	10	10	10	10	10	10	10	10	10	10	10	10	10	10	10	10	10	10	10	10	10	10	10	10	10	10	10	10	10	10	10
63/64	10	10	10	10	10	10	10	10	10	10	10	10	10	10	10	10	10	10	10	10	10	10	10	10	10	10	10	10	10	10	10	10	10	10	10	10	10	10	10
51/52	10	10	10	10	10	10	10	10	10	10	10	10	10	10	9	10	10	10	10	10	10	10	10	10	10	10	10	10	10	10	10	10	10	10	10	10	10	10	10
37/38	10	10	10	10	10	10	10	10	10	10	10	10	10	10	9	10	10	10	10	10	10	10	10	10	10	10	10	10	10	10	10	10	10	10	10	10	10	10	10
25/26	10	10	10	10	10	10	10	10	10	10	10	10	10	10	9	10	10	10	10	10	10	10	10	10	10	10	10	10	10	10	10	10	10	10	10	10	10	10	10
11/12	10	10	10	10	10	10	10	10	10	10	10	10	10	10	9	9	10	10	10	10	10	10	10	10	10	10	10	10	10	10	10	10	10	10	10	10	10	10	10
1 & 2 Bravo	10	10	10	10	10	10	10	10	10	10	10	10	7	9	7	9	8	9	9	9	10	10	10	10	10	10	10	10	10	10	10	10	10	10	10	10	10	10	10

**NOTE: This is automated data that may/may not agree with the official BAM thinking that's found on the daily slides or special visibility report slides. This data should be used as a guide only**



# Houston Pilots Wind Chart



## Forecast Confidence



## Example

Sustained wind 13 Knots  
 Gusts 18 Knots  
 Wind from the N

WS: 13  
 G:18  
 N

Time Knots	Tue 8pm	Tue 9pm	Tue 10pm	Tue 11pm	Wed 12am	Wed 1am	Wed 2am	Wed 3am	Wed 4am	Wed 5am	Wed 6am	Wed 7am	Wed 8am	Wed 9am	Wed 10am	Wed 11am	Wed 12pm	Wed 1pm	Wed 2pm	Wed 3pm	Wed 4pm	Wed 5pm	Wed 6pm	Wed 7pm	Wed 8pm	Wed 9pm	Wed 10pm	Wed 11pm	Thu 12am	Thu 1am	Thu 2am	Thu 3am	Thu 4am	Thu 5am	Thu 6am	Thu 7am					
610 Bridge	5 9 SSE	5 7 SE	4 6 SE	3 5 SSE	2 3 SE	2 3 E	2 3 ENE	2 3 ENE	3 4 ENE	3 4 ENE	4 5 ENE	4 5 ENE	5 6 ENE	6 7 ENE	8 10 E	8 12 E	9 13 E	9 14 E	8 13 E	8 13 E	8 13 E	8 13 E	8 13 E	8 13 E	6 9 E	5 7 E	5 7 ENE	4 6 ENE	4 6 ENE	3 4 ENE	4 5 ENE	4 5 ENE	3 4 ENE	3 4 ENE	3 4 ENE	3 4 ENE	3 4 ENE				
Kinder 1	5 9 SE	4 7 SSE	4 6 SSE	3 5 SSE	2 3 SE	2 3 E	2 3 ENE	2 3 ENE	3 4 ENE	3 4 ENE	4 5 ENE	4 5 ENE	5 6 ENE	6 7 ENE	8 10 E	8 12 E	9 13 E	9 14 E	8 13 E	8 13 E	8 13 E	8 13 E	8 13 E	8 13 E	6 9 E	5 7 E	5 7 ENE	4 6 ENE	4 5 ENE	3 4 ENE	4 5 ENE	4 5 ENE	3 4 ENE	3 4 ENE	3 4 ENE	3 4 ENE	3 4 ENE	3 4 ENE			
Greens Bayou	5 8 SE	4 7 SSE	4 6 SSE	3 5 SSE	2 3 SE	2 3 E	2 3 ENE	3 4 ENE	3 4 ENE	4 5 ENE	4 5 ENE	5 6 ENE	6 7 ENE	8 10 E	8 12 E	9 13 E	9 14 E	8 13 E	8 13 E	8 13 E	8 13 E	8 13 E	8 13 E	6 9 E	5 7 E	5 7 ENE	4 6 ENE	4 5 ENE	3 4 ENE	4 5 ENE	4 5 ENE	3 4 ENE	3 4 ENE	3 4 ENE	3 4 ENE	3 4 ENE	3 4 ENE	3 4 ENE			
Shell Crude	5 8 SE	4 7 SSE	4 6 SSE	3 5 SSE	2 3 SE	2 3 E	2 3 ENE	3 4 ENE	3 4 ENE	4 5 ENE	4 5 ENE	5 6 ENE	6 7 ENE	8 10 E	8 12 E	9 13 E	9 14 E	8 13 E	8 13 E	8 13 E	8 13 E	8 13 E	8 13 E	6 9 E	5 7 E	5 7 ENE	4 6 ENE	4 5 ENE	3 4 ENE	4 5 ENE	4 5 ENE	3 4 ENE	3 4 ENE	3 4 ENE	3 4 ENE	3 4 ENE	3 4 ENE	3 4 ENE			
Lynchburg Ferries	6 9 SSE	5 8 SSE	4 7 SSE	4 6 SSE	3 5 SE	3 4 SE	3 4 ENE	3 4 ENE	4 5 ENE	4 5 ENE	5 6 ENE	5 6 ENE	6 7 ENE	8 10 E	8 12 E	9 13 E	9 10 E	10 10 E	9 9 E	9 9 E	9 9 E	9 9 E	9 9 E	8 7 E	7 6 E	7 6 ENE	6 5 ENE	5 4 ENE	5 4 ENE	4 3 ENE	4 3 ENE	4 3 ENE	4 3 ENE	4 3 ENE	4 3 ENE	4 3 ENE	4 3 ENE	4 3 ENE			
Exxon 3	7 10 SE	6 9 SE	5 8 SE	5 8 SE	4 7 SE	4 7 SE	4 7 ENE	4 7 ENE	5 8 ENE	5 8 ENE	6 9 ENE	6 9 ENE	7 8 ENE	8 10 E	11 13 E	13 14 E	14 14 E	14 14 E	14 14 E	13 13 E	13 13 E	13 13 E	12 12 E	11 10 E	11 9 E	10 8 E	9 8 ENE	8 7 ENE	7 7 ENE	7 7 ENE	7 7 ENE	7 7 ENE	6 6 ENE	6 6 ENE	6 6 ENE	6 6 ENE	6 6 ENE	6 6 ENE			
Morgans Point	8 10 SE	8 9 SE	8 9 SE	8 9 SE	7 8 SE	7 8 SE	7 8 ENE	7 8 ENE	8 9 ENE	8 9 ENE	9 10 ENE	9 10 ENE	10 11 ENE	11 13 E	14 14 E	14 14 E	14 14 E	14 14 E	13 13 E	13 13 E	13 13 E	13 13 E	12 12 E	11 10 E	11 9 E	10 8 E	9 8 ENE	8 7 ENE	7 7 ENE	7 7 ENE	7 7 ENE	7 7 ENE	6 6 ENE	6 6 ENE	6 6 ENE	6 6 ENE	6 6 ENE	6 6 ENE	6 6 ENE		
75/76	10 SE	11 SE	9 SE	9 SE	8 SE	8 SE	8 ENE	8 ENE	9 ENE	9 ENE	10 ENE	10 ENE	11 ENE	13 E	15 E	16 E	16 E	16 E	16 E	16 E	16 E	16 E	16 E	15 E	14 E	14 E	14 E	13 E	12 E	11 E	11 E	10 E	10 E	10 E	9 E	9 E	9 E	9 E	9 E	9 E	9 E
63/64	10 SE	10 SE	9 SE	9 SE	8 SE	8 SE	8 ENE	8 ENE	9 ENE	9 ENE	10 ENE	10 ENE	11 ENE	13 E	15 E	16 E	17 E	17 E	16 E	16 E	16 E	16 E	16 E	15 E	14 E	14 E	14 E	13 E	12 E	11 E	11 E	10 E	10 E	10 E	9 E	9 E	9 E	9 E	9 E	9 E	9 E
51/52	10 SE	11 SE	10 SE	9 SE	8 SE	8 SE	8 ENE	8 ENE	9 ENE	9 ENE	10 ENE	10 ENE	11 ENE	13 E	15 E	16 E	17 E	17 E	16 E	16 E	16 E	16 E	16 E	15 E	14 E	14 E	14 E	13 E	12 E	11 E	11 E	10 E	10 E	10 E	9 E	9 E	9 E	9 E	9 E	9 E	9 E
37/38	9 SE	9 SE	8 SE	8 SE	8 SE	8 SE	8 ENE	8 ENE	9 ENE	9 ENE	10 ENE	10 ENE	11 ENE	13 E	15 E	16 E	17 E	17 E	16 E	16 E	16 E	16 E	16 E	15 E	14 E	14 E	14 E	13 E	12 E	11 E	11 E	10 E	10 E	10 E	9 E	9 E	9 E	9 E	9 E	9 E	9 E
25/26	8 SE	8 SE	7 SE	7 SE	6 SE	6 SE	7 ENE	7 ENE	8 ENE	8 ENE	9 ENE	9 ENE	10 ENE	12 E	14 E	16 E	17 E	17 E	16 E	16 E	16 E	16 E	15 E	14 E	14 E	14 E	13 E	12 E	11 E	11 E	10 E	10 E	10 E	9 E	9 E	9 E	9 E	9 E	9 E	9 E	9 E
11/12	8 SE	8 SE	7 SE	7 SE	7 SE	7 SE	7 ENE	7 ENE	8 ENE	8 ENE	9 ENE	9 ENE	10 ENE	12 E	14 E	16 E	17 E	17 E	16 E	16 E	16 E	16 E	15 E	14 E	14 E	14 E	13 E	12 E	11 E	11 E	10 E	10 E	10 E	9 E	9 E	9 E	9 E	9 E	9 E	9 E	9 E
1 & 2 Bravo	9 SE	11 SE	10 SE	10 SE	10 SE	10 SE	9 ENE	9 ENE	10 ENE	10 ENE	11 ENE	11 ENE	12 ENE	14 E	16 E	18 E	19 E	19 E	18 E	18 E	18 E	18 E	17 E	16 E	15 E	14 E	13 E	12 E	11 E	11 E	10 E	10 E	10 E	9 E	9 E	9 E	9 E	9 E	9 E	9 E	9 E

**NOTE: This is automated data that may/may not agree with the official BAM thinking that's found on the daily slides. This data should be used as a guide only**

## Forecast Discussion

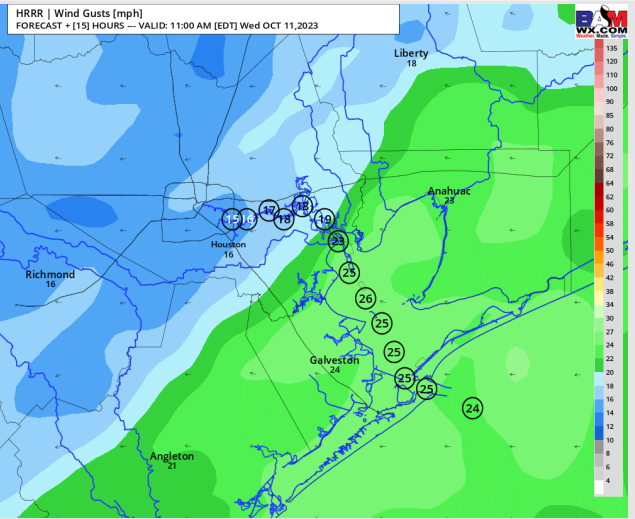
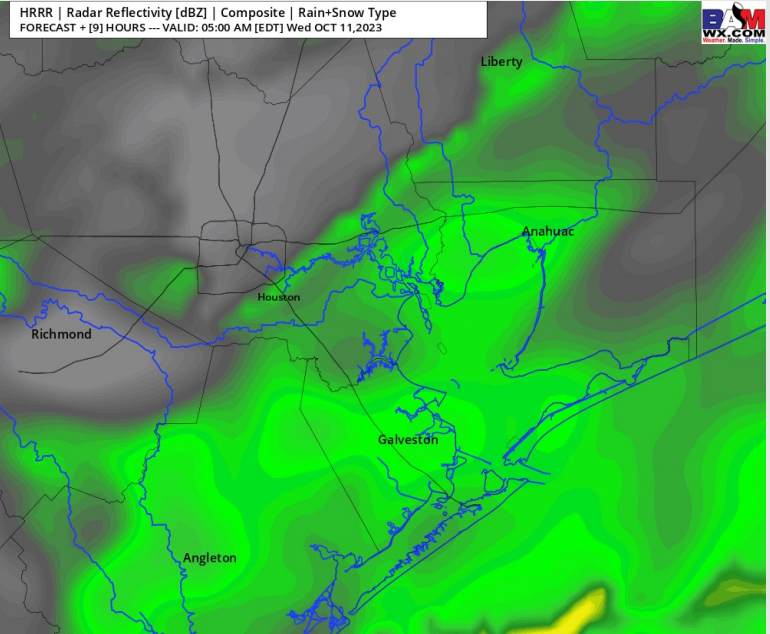
**Precip:** Drier air towards the surface continues to delay more widespread showers from reaching the bay area. Favoring scattered to widespread, light rain chances to begin as early as 1AM. Chances anticipated to increase to 60% from 3AM through 11 AM, then gradually decreasing to 30% from 11AM - 7PM. Dry conditions will be favored for all locations after 7PM, except for an isolated shower for the Boarding Station for the remainder of the evening.

**Wind:** Winds will be out of the E / ENE throughout the day. For Stations **N of Morgan's Point**, winds will be at 3-8kts throughout the day, aside from a brief increase to 6-11 kts between 12 - 6 PM. Winds **S of Morgan's Point** will increase to 10-15 kts by 8 AM and then again to 14 - 19 kts by 12 PM. **Winds at the Boarding Station and 11/12 are at risk for higher sustained winds of 17 - 22 kts from 11 AM - 3 PM. Gusts of up to 23 - 28 kts are possible after 9 AM for locations S of Morgan's Point. Due to elevated wind gusts, wave heights of 5 - 7 feet will be possible for the Boarding Station from 7AM- 7PM.**

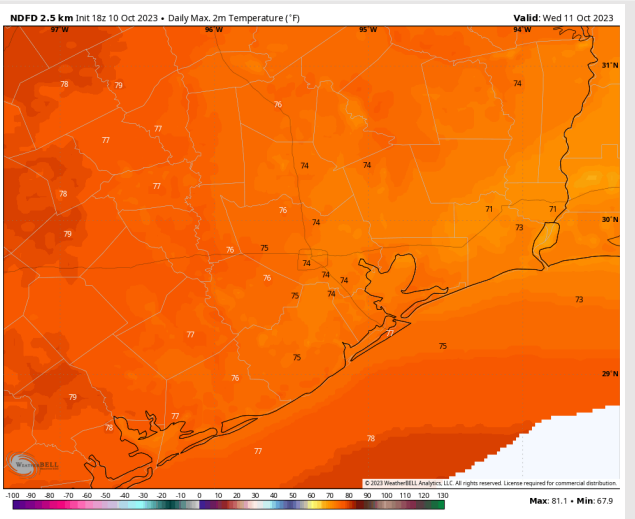
**High Temps:** **N of Morgan's Point:** Mid 70s F. **S of Morgan's Point:** Mid 70s F.

**Visibility:** Not anticipating any visibility concerns.

## Precip Image: 4 AM CT



**Wind Gusts:  
10 AM CT**



**High Temps  
Wednesday**

## Forecast Discussion

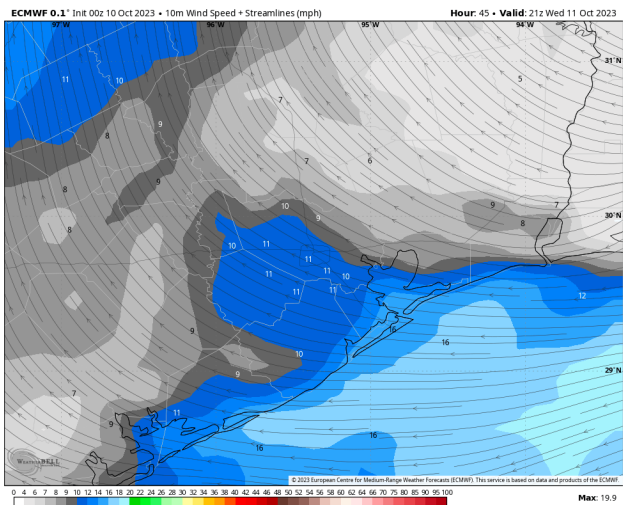
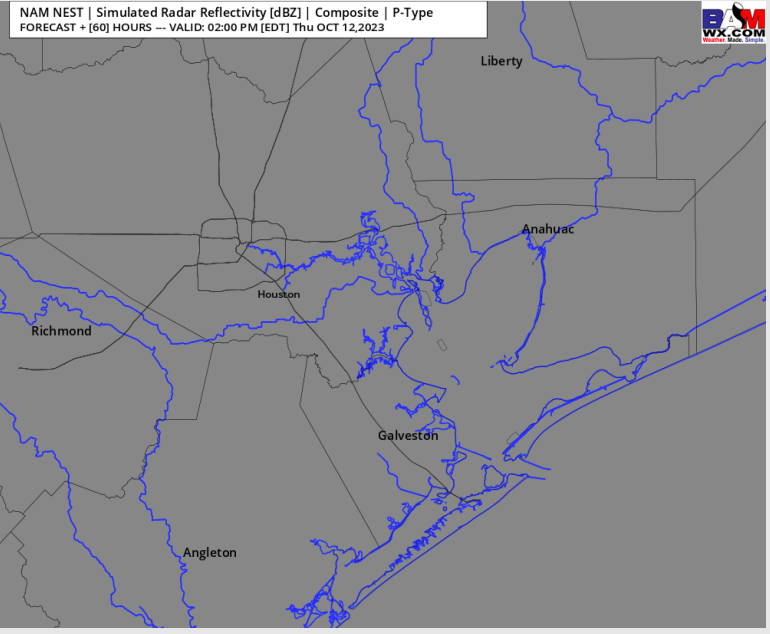
**Precip:** Favoring dry conditions for all locations, aside from a 10-20% chance of an isolated shower for the Boarding Station. Lower confidence is present after 7 PM, but the potential for ~20% chances can trickle north to locations south of Morgan's Point. The risk is for precipitation chances to trend wetter in the late PM, but remain uncertain.

**Wind:** Winds will be out of the ESE/E for the majority of the day. For Stations **N of Morgan's Point**, winds will be at 3-6 kts, increasing to 5-10 kts towards noon. Winds **S of Morgan's Point** will remain at 8-13 kts for most of the day before weakening to 6-11 kts after 10PM.

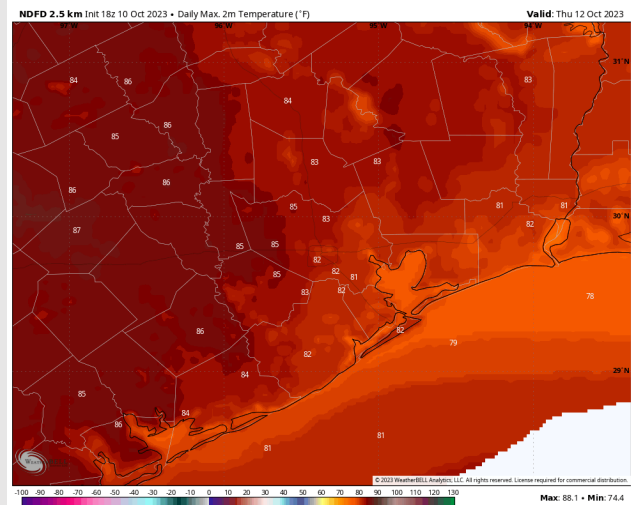
**High Temps:** **N of Morgan's Point:** Lower to Mid 80's. **S of Morgan's Point:** Lower 80s to 80 F.

**Visibility:** Not anticipating any visibility issues at this time.

## Precip Image: 1 PM CT



Wind Speed:  
4 PM CT



High Temps  
Thursday