

Houston Pilots Forecast Package



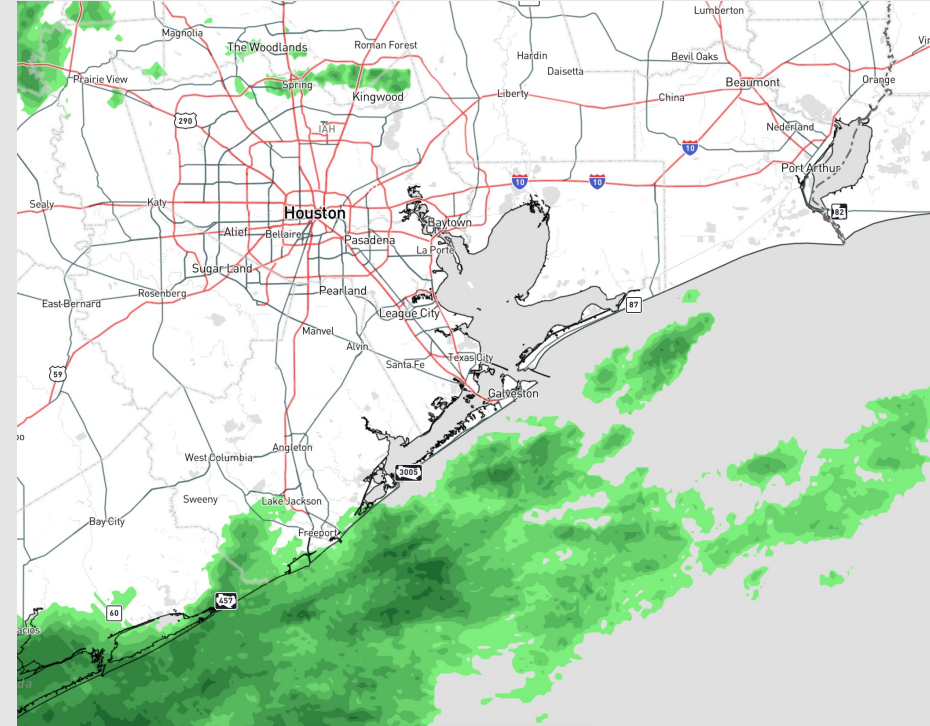
Updated: 2:15 PM CT

Tuesday, October 10, 2023

Forecaster: John Kemper

Weather Headlines

- Favoring dry conditions through early afternoon, with chances of more persistent rain increasing through the evening and continuing through Wednesday PM.
- Winds to increase as a very weak tropical system eventually pushes northeast towards FL. **In the afternoon on WED, a few gusts of up to 25 kts are possible.**
- **Wave Heights for the Boarding Station of up to 3 -5 feet will be possible Wednesday PM, but not favoring 6' trigger threshold to be breached at any time.**



Radar/NWS Alerts: 1:38 PM CT



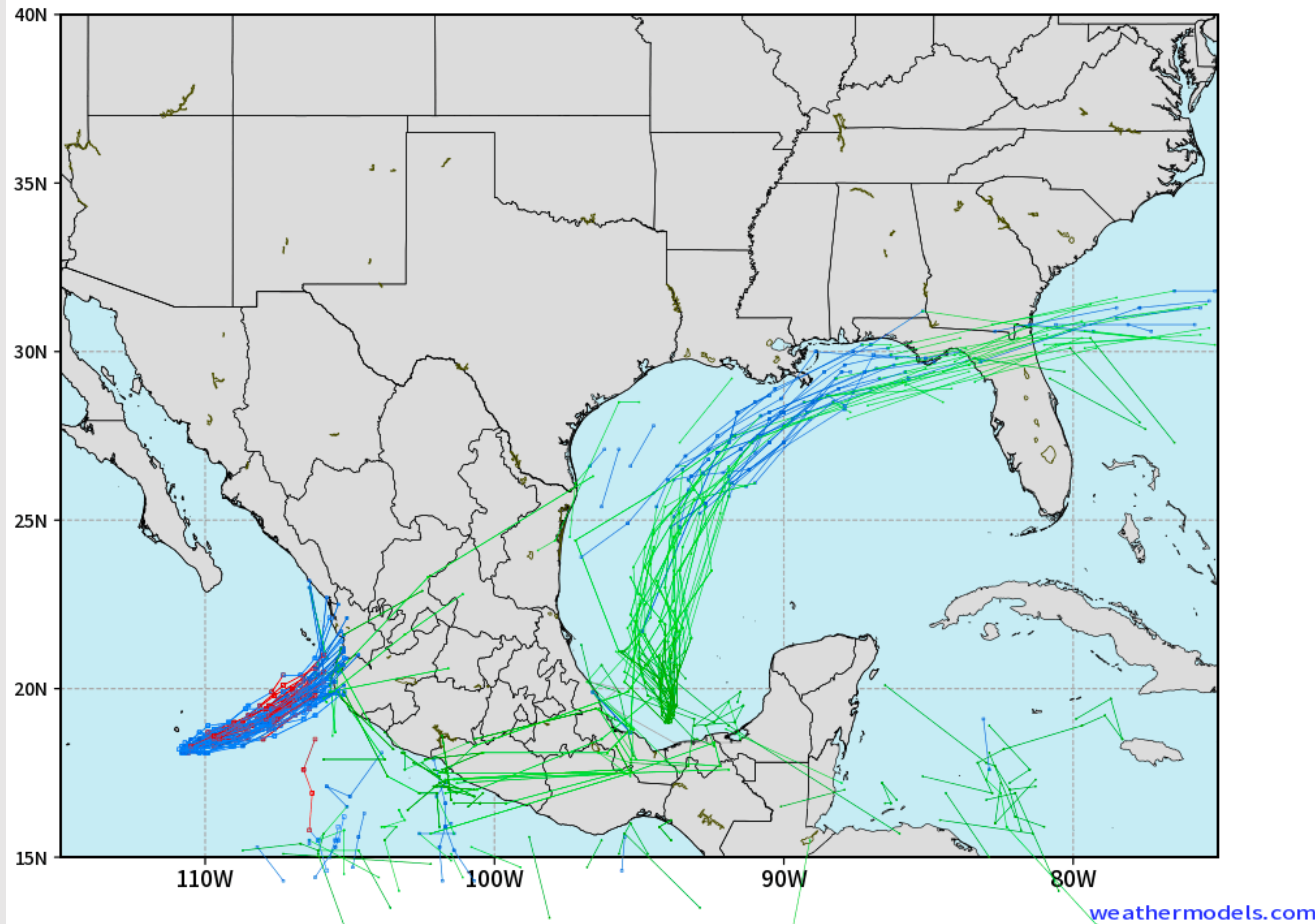
As always, please do not hesitate to reach out to us with any forecast questions via the chat option on the Weather Porthole or our on-call number, **(317)-560-8122** press 1 for forecast questions.

Houston Pilots Tropical Update

European Model Next 10 Days Tropical Tracks

ECMWF GULF EPS Cyclone Locations --> Next [10-days]
INIT: 00Z10OCT2023 --> UNTIL 00Z20OCT2023

o-o ENSEMBLE MEAN
o-o 1000 - 1010 hPa
o-o 980 - 999 hPa
o-o 960 - 979 hPa
o-o 950 - 959 hPa
o-o < 950 hPa



A tropical system will develop west of the Yucatan Peninsula this week and move northeast toward the Florida Panhandle.

This system will not directly impact the HOU area this week.

Houston Pilots Visibility Chart (miles)



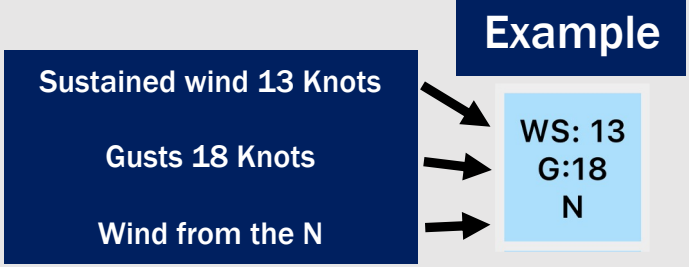
Forecast Confidence



| Time | Tue 1pm | Tue 2pm | Tue 3pm | Tue 4pm | Tue 5pm | Tue 6pm | Tue 7pm | Tue 8pm | Tue 9pm | Tue 10pm | Tue 11pm | Wed 12am | Wed 1am | Wed 2am | Wed 3am | Wed 4am | Wed 5am | Wed 6am | Wed 7am | Wed 8am | Wed 9am | Wed 10am | Wed 11am | Wed 12pm | Wed 1pm | Wed 2pm | Wed 3pm | Wed 4pm | Wed 5pm | Wed 6pm | Wed 7pm | Wed 8pm | Wed 9pm | Wed 10pm | Wed 11pm | Thu 12am | | | | |
|-------------------|---------|---------|---------|---------|---------|---------|---------|---------|---------|----------|----------|----------|---------|---------|---------|---------|---------|---------|---------|---------|---------|----------|----------|----------|---------|---------|---------|---------|---------|---------|---------|---------|---------|----------|----------|----------|----|----|----|----|
| 610 Bridge | 10 | 10 | 10 | 10 | 10 | 10 | 10 | 10 | 10 | 10 | 10 | 10 | 10 | 10 | 10 | 10 | 10 | 10 | 10 | 10 | 8 | 8 | 6 | 6 | 6 | 6 | 6 | 7 | 10 | 10 | 10 | 10 | 10 | 10 | 10 | 10 | 10 | | | |
| Kinder 1 | 10 | 10 | 10 | 10 | 10 | 10 | 10 | 10 | 10 | 10 | 10 | 10 | 10 | 10 | 10 | 10 | 10 | 10 | 10 | 10 | 8 | 8 | 7 | 6 | 6 | 6 | 7 | 7 | 10 | 10 | 10 | 10 | 10 | 10 | 10 | 10 | 10 | 10 | | |
| Greens Bayou | 10 | 10 | 10 | 10 | 10 | 10 | 10 | 10 | 10 | 10 | 10 | 10 | 10 | 10 | 10 | 10 | 10 | 10 | 10 | 10 | 8 | 8 | 8 | 7 | 7 | 7 | 8 | 8 | 10 | 10 | 10 | 10 | 10 | 10 | 10 | 10 | 10 | 10 | | |
| Shell Crude | 10 | 10 | 10 | 10 | 10 | 10 | 10 | 10 | 10 | 10 | 10 | 10 | 10 | 10 | 10 | 10 | 10 | 10 | 10 | 10 | 8 | 8 | 8 | 8 | 8 | 8 | 8 | 8 | 10 | 10 | 10 | 10 | 10 | 10 | 10 | 10 | 10 | 10 | 10 | |
| Lynchburg Ferries | 10 | 10 | 10 | 10 | 10 | 10 | 10 | 10 | 10 | 10 | 10 | 10 | 10 | 10 | 10 | 10 | 10 | 10 | 10 | 10 | 8 | 8 | 8 | 8 | 8 | 8 | 8 | 8 | 10 | 10 | 10 | 10 | 10 | 10 | 10 | 10 | 10 | 10 | 10 | |
| Exxon 3 | 10 | 10 | 10 | 10 | 10 | 10 | 10 | 10 | 10 | 10 | 10 | 10 | 10 | 10 | 10 | 10 | 10 | 10 | 10 | 10 | 8 | 8 | 8 | 8 | 8 | 8 | 8 | 8 | 10 | 10 | 10 | 10 | 10 | 10 | 10 | 10 | 10 | 10 | 10 | |
| Morgans Point | 10 | 10 | 10 | 10 | 10 | 10 | 10 | 10 | 10 | 10 | 10 | 10 | 10 | 10 | 10 | 10 | 10 | 10 | 10 | 10 | 8 | 8 | 8 | 8 | 8 | 8 | 8 | 8 | 10 | 10 | 10 | 10 | 10 | 10 | 10 | 10 | 10 | 10 | 10 | 10 |
| 75/76 | 10 | 10 | 10 | 10 | 10 | 10 | 10 | 10 | 10 | 10 | 10 | 10 | 10 | 10 | 10 | 10 | 10 | 10 | 10 | 10 | 8 | 8 | 8 | 8 | 8 | 8 | 8 | 8 | 10 | 10 | 10 | 10 | 10 | 10 | 10 | 10 | 10 | 10 | 10 | 10 |
| 63/64 | 10 | 10 | 10 | 10 | 10 | 10 | 10 | 10 | 10 | 10 | 10 | 10 | 10 | 10 | 10 | 10 | 10 | 10 | 10 | 10 | 8 | 8 | 8 | 8 | 8 | 8 | 8 | 8 | 10 | 10 | 10 | 10 | 10 | 10 | 10 | 10 | 10 | 10 | 10 | 10 |
| 51/52 | 10 | 10 | 10 | 10 | 10 | 10 | 10 | 10 | 10 | 10 | 10 | 10 | 10 | 10 | 10 | 10 | 10 | 10 | 10 | 10 | 8 | 8 | 8 | 8 | 8 | 8 | 8 | 8 | 10 | 10 | 10 | 10 | 10 | 10 | 10 | 10 | 10 | 10 | 10 | 10 |
| 37/38 | 10 | 10 | 10 | 10 | 10 | 10 | 10 | 10 | 10 | 10 | 10 | 10 | 10 | 10 | 10 | 10 | 10 | 10 | 10 | 10 | 8 | 8 | 8 | 8 | 8 | 8 | 8 | 8 | 10 | 10 | 10 | 10 | 10 | 10 | 10 | 10 | 10 | 10 | 10 | 10 |
| 25/26 | 10 | 10 | 10 | 10 | 10 | 10 | 10 | 10 | 10 | 10 | 10 | 10 | 10 | 10 | 10 | 10 | 10 | 10 | 10 | 10 | 8 | 8 | 8 | 8 | 8 | 8 | 8 | 8 | 10 | 10 | 10 | 10 | 10 | 10 | 10 | 10 | 10 | 10 | 10 | 10 |
| 11/12 | 10 | 10 | 10 | 10 | 10 | 10 | 10 | 10 | 10 | 10 | 10 | 10 | 10 | 10 | 10 | 10 | 10 | 10 | 10 | 10 | 8 | 8 | 8 | 8 | 8 | 8 | 8 | 8 | 10 | 10 | 10 | 10 | 10 | 10 | 10 | 10 | 10 | 10 | 10 | 10 |
| 1 & 2 Bravo | 10 | 10 | 10 | 10 | 10 | 10 | 10 | 10 | 10 | 10 | 10 | 10 | 10 | 10 | 10 | 10 | 10 | 8 | 9 | 9 | 8 | 7 | 8 | 8 | 8 | 8 | 8 | 8 | 10 | 10 | 10 | 10 | 10 | 10 | 10 | 10 | 10 | 10 | 10 | 10 |

NOTE: This is automated data that may/may not agree with the official BAM thinking that's found on the daily slides or special visibility report slides. This data should be used as a guide only

Houston Pilots Wind Chart



| Time Knots | Tue 1pm | Tue 2pm | Tue 3pm | Tue 4pm | Tue 5pm | Tue 6pm | Tue 7pm | Tue 8pm | Tue 9pm | Tue 10pm | Tue 11pm | Wed 12am | Wed 1am | Wed 2am | Wed 3am | Wed 4am | Wed 5am | Wed 6am | Wed 7am | Wed 8am | Wed 9am | Wed 10am | Wed 11am | Wed 12pm | Wed 1pm | Wed 2pm | Wed 3pm | Wed 4pm | Wed 5pm | Wed 6pm | Wed 7pm | Wed 8pm | Wed 9pm | Wed 10pm | Wed 11pm | Thu 12am |
|-------------------|---------|---------|---------|---------|---------|---------|---------|---------|---------|----------|----------|----------|---------|---------|---------|---------|---------|---------|---------|---------|---------|----------|----------|----------|---------|---------|---------|---------|---------|---------|---------|---------|---------|----------|----------|----------|
| 610 Bridge | 5 SE | 5 SE | 6 SE | 7 SE | 7 SSE | 7 SSE | 5 SSE | 4 SSE | 4 SSE | 4 SSE | 2 SSE | 2 SSE | 2 ENE | 2 ENE | 3 ENE | 3 ENE | 4 ENE | 5 ENE | 6 ENE | 7 ENE | 8 E | 9 E | 9 E | 9 E | 8 ENE | 8 ENE | 8 ENE | 8 ENE | 7 ENE | 6 ENE | 5 ENE | 5 ENE | 5 ENE | 4 ENE | 4 ENE | |
| Kinder 1 | 7 SE | 8 SE | 6 SE | 7 SE | 7 SSE | 7 SSE | 5 SSE | 4 SSE | 4 SSE | 2 SSE | 2 SSE | 2 ENE | 2 ENE | 3 ENE | 3 ENE | 4 ENE | 5 ENE | 6 ENE | 7 ENE | 8 ENE | 10 E | 12 E | 13 E | 13 E | 14 ENE | 13 ENE | 12 ENE | 13 ENE | 13 ENE | 12 ENE | 11 ENE | 8 ENE | 7 ENE | 7 ENE | 6 ENE | |
| Greens Bayou | 8 SE | 8 SE | 9 SE | 10 SE | 11 SSE | 10 SSE | 8 SSE | 7 SSE | 6 SSE | 5 SSE | 4 SSE | 4 SSE | 4 SSE | 4 SSE | 4 SSE | 4 SSE | 5 SSE | 7 SSE | 8 SSE | 10 SSE | 12 SSE | 13 SSE | 13 SSE | 14 SSE | 13 SSE | 12 SSE | 13 SSE | 13 SSE | 11 SSE | 9 SSE | 8 SSE | 7 SSE | 7 SSE | 6 SSE | 5 SSE | 4 SSE |
| Shell Crude | 5 SE | 6 SE | 7 SE | 7 SE | 7 SSE | 5 SSE | 4 SSE | 4 SSE | 3 SSE | 2 SSE | 2 SSE | 3 SSE | 3 SSE | 3 SSE | 3 SSE | 4 SSE | 5 SSE | 6 SSE | 7 SSE | 8 SSE | 10 SSE | 12 SSE | 13 SSE | 13 SSE | 14 SSE | 13 SSE | 13 SSE | 12 SSE | 11 SSE | 9 SSE | 8 SSE | 7 SSE | 7 SSE | 6 SSE | 5 SSE | 4 SSE |
| Lynchburg Ferries | 6 SE | 6 SE | 7 SE | 8 SE | 8 SSE | 6 SSE | 4 SSE | 4 SSE | 3 SSE | 2 SSE | 2 SSE | 3 SSE | 4 SSE | 4 SSE | 5 SSE | 6 SSE | 7 SSE | 8 SSE | 9 SSE | 10 SSE | 12 SSE | 13 SSE | 13 SSE | 14 SSE | 13 SSE | 13 SSE | 12 SSE | 11 SSE | 9 SSE | 8 SSE | 7 SSE | 6 SSE | 5 SSE | 5 SSE | 4 SSE | |
| Exxon 3 | 8 SE | 9 SE | 10 SE | 11 SE | 11 SSE | 9 SSE | 7 SSE | 6 SSE | 5 SSE | 4 SSE | 5 SSE | 5 SSE | 5 SSE | 5 SSE | 6 SSE | 6 SSE | 7 SSE | 8 SSE | 9 SSE | 11 SSE | 13 SSE | 13 SSE | 14 SSE | 14 SSE | 13 SSE | 13 SSE | 12 SSE | 11 SSE | 10 SSE | 8 SSE | 7 SSE | 6 SSE | 6 SSE | 5 SSE | 4 SSE | |
| Morgans Point | 7 SE | 8 SE | 8 SE | 9 SE | 10 SSE | 10 SSE | 9 SSE | 8 SSE | 7 SSE | 6 SSE | 6 SSE | 6 SSE | 6 SSE | 7 SSE | 7 SSE | 8 SSE | 8 SSE | 9 SSE | 10 SSE | 11 SSE | 12 SSE | 14 SSE | 14 SSE | 14 SSE | 14 SSE | 14 SSE | 14 SSE | 14 SSE | 14 SSE | 13 SSE | 12 SSE | 11 SSE | 10 SSE | 9 SSE | 8 SSE | 7 SSE |
| 75/76 | 10 SE | 10 SE | 11 SE | 11 SSE | 12 SSE | 12 SSE | 10 SSE | 9 SSE | 8 SSE | 8 SSE | 8 SSE | 8 SSE | 8 SSE | 9 SSE | 10 SSE | 12 SSE | 13 SSE | 14 SSE | 15 SSE | 16 SSE | 16 SSE | 16 SSE | 16 SSE | 15 SSE | 15 SSE | 16 SSE | 16 SSE | 16 SSE | 15 SSE | 14 SSE | 13 SSE | 12 SSE | 11 SSE | 10 SSE | 10 SSE | 10 SSE |
| 63/64 | 9 SE | 10 SE | 10 SE | 11 SE | 12 SSE | 12 SSE | 11 SSE | 10 SSE | 9 SSE | 9 SSE | 9 SSE | 9 SSE | 9 SSE | 10 SSE | 11 SSE | 13 SSE | 14 SSE | 16 SSE | 18 SSE | 18 SSE | 18 SSE | 18 SSE | 18 SSE | 17 SSE | 16 SSE | 16 SSE | 16 SSE | 16 SSE | 15 SSE | 14 SSE | 13 SSE | 12 SSE | 11 SSE | 10 SSE | 10 SSE | 10 SSE |
| 51/52 | 7 SE | 8 SE | 8 SE | 9 SE | 10 SSE | 11 SSE | 10 SSE | 9 SSE | 8 SSE | 8 SSE | 7 SSE | 7 SSE | 8 SSE | 8 SSE | 9 SSE | 10 SSE | 11 SSE | 13 SSE | 14 SSE | 15 SSE | 16 SSE | 16 SSE | 16 SSE | 16 SSE | 15 SSE | 15 SSE | 16 SSE | 16 SSE | 15 SSE | 14 SSE | 13 SSE | 12 SSE | 11 SSE | 10 SSE | 10 SSE | 10 SSE |
| 37/38 | 7 SE | 8 SE | 8 SE | 9 SE | 10 SSE | 10 SSE | 9 SSE | 8 SSE | 8 SSE | 8 SSE | 7 SSE | 7 SSE | 8 SSE | 8 SSE | 8 SSE | 9 SSE | 10 SSE | 11 SSE | 12 SSE | 13 SSE | 15 SSE | 16 SSE | 16 SSE | 16 SSE | 16 SSE | 16 SSE | 16 SSE | 15 SSE | 14 SSE | 13 SSE | 13 SSE | 13 SSE | 12 SSE | 11 SSE | 10 SSE | 9 SSE |
| 25/26 | 7 SE | 8 SE | 8 SE | 8 SE | 8 SSE | 8 SSE | 8 SSE | 7 SSE | 7 SSE | 6 SSE | 7 SSE | 7 SSE | 7 SSE | 7 SSE | 8 SSE | 8 SSE | 8 SSE | 9 SSE | 10 SSE | 11 SSE | 12 SSE | 14 SSE | 15 SSE | 17 SSE | 18 SSE | 17 SSE | 16 SSE | 16 SSE | 15 SSE | 14 SSE | 13 SSE | 12 SSE | 11 SSE | 10 SSE | 9 SSE | 8 SSE |
| 11/12 | 8 SE | 8 SE | 8 SE | 8 SE | 8 SSE | 8 SSE | 8 SSE | 7 SSE | 7 SSE | 7 SSE | 7 SSE | 8 SSE | 8 SSE | 8 SSE | 9 SSE | 10 SSE | 11 SSE | 12 SSE | 14 SSE | 16 SSE | 18 SSE | 19 SSE | 19 SSE | 19 SSE | 18 SSE | 17 SSE | 16 SSE | 16 SSE | 15 SSE | 14 SSE | 13 SSE | 12 SSE | 11 SSE | 10 SSE | 9 SSE | 8 SSE |
| 1 & 2 Bravo | 8 SE | 8 SE | 8 SE | 8 SE | 9 SE | 9 SE | 9 SE | 10 SE | 10 SE | 10 SE | 10 SE | 10 SE | 10 SE | 10 SE | 11 SE | 13 SE | 14 SE | 15 SE | 17 SE | 18 SE | 19 SE | 20 SE | 22 SE | 21 SE | 20 SE | 19 SE | 18 SE | 16 SE | 15 SE | 14 SE | 13 SE | 12 SE | 12 SE | 12 SE | 11 SE | |

NOTE: This is automated data that may/may not agree with the official BAM thinking that's found on the daily slides. This data should be used as a guide only

Forecast Discussion

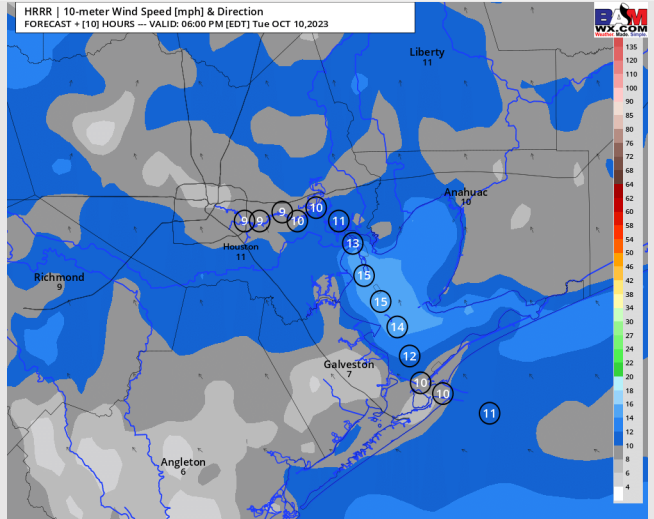
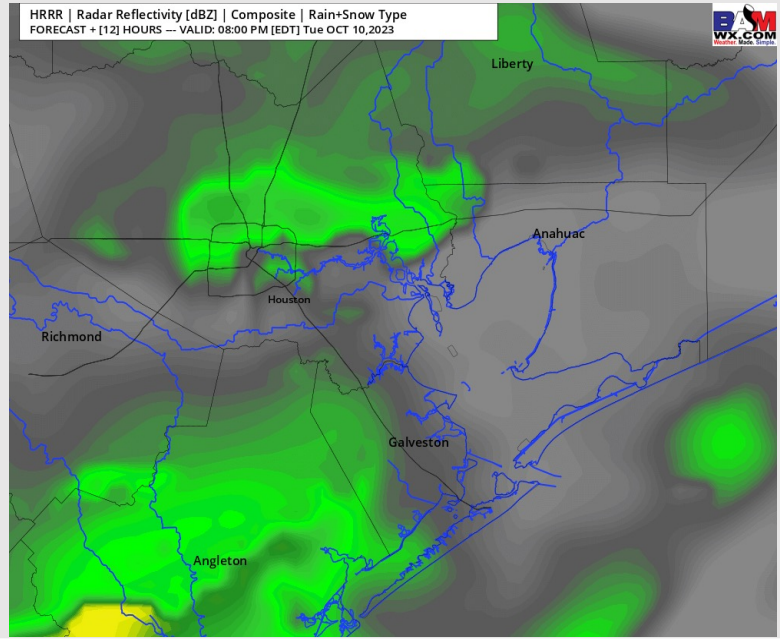
Precip: Favoring scattered, light shower chances to gradually begin (~40%) to work across the area. Coverage will gradually increase to become more widespread after 10 PM-CT. Best chances for heavy precipitation will sit offshore by ~ 50 miles, but a few moderate bands will be possible during overnight.

Wind: Winds will be out of the S/SE throughout the afternoon / evening. For Stations **N of Morgan's Point**, winds will be at 3-8 kts the remainder of the day outside of a brief window of 5 - 10 kts from 3 - 8 PM. Sustained winds **S of Morgan's Point** will slowly be increasing through the evening. Starting at 4 - 9 kts in the early AM, winds will be 5 - 10 kts by 3 PM and 8 - 13 kts by 6 PM. The Boarding Station can see winds increase to 8 -13 kts slightly sooner towards 4 PM.

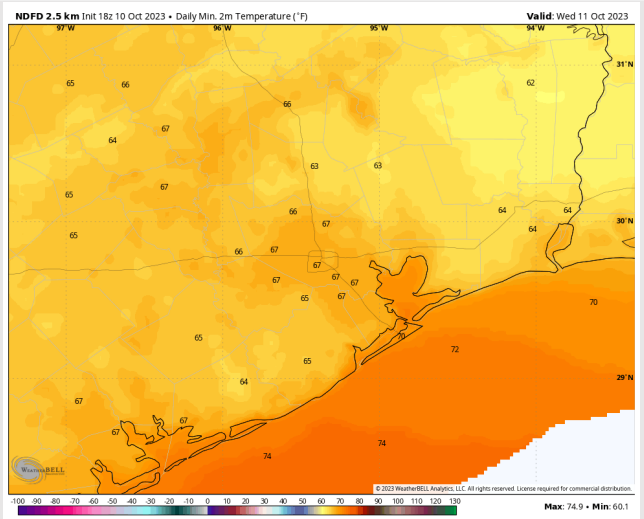
Low Temps: **N of Morgan's Point:** Upper 60s F. **S of Morgan's Point:** Upper 70s

Visibility: Not anticipating any visibility issues currently.

Precip Image: 7 PM CT



Wind Speed:
5 PM CT



Low Temps
Wednesday

Houston Pilots: Wed. 10/11/2023



Forecast Discussion

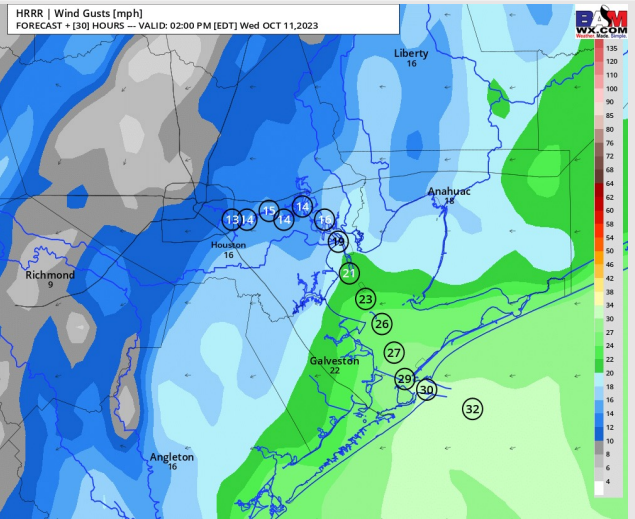
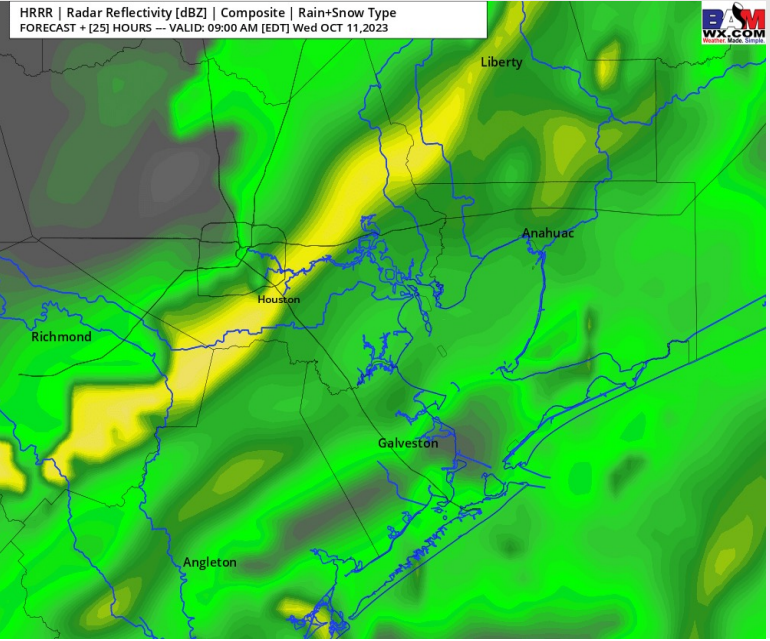
Precip: Scattered/Widespread chances from Tuesday will roll over through the overnight, leaving an additional 70% chance for showers for all Stations through 11 AM, gradually decreasing to 30% from 11AM - 7PM. Dry conditions will be favored for all locations after 7PM, except for an isolated shower for the Boarding Station for the remainder of the evening.

Wind: Winds will be out of the E / ENE throughout the day. For Stations **N of Morgan's Point**, winds will be at 3-8kts throughout the day, aside from a brief increase to 6-11 kts between 12 - 6 PM. Winds **S of Morgan's Point** will increase to 10-15 kts by 9 AM and then again to 14 - 19 kts by 12 PM. **Winds at the Boarding Station and 11/12** are at risk for higher sustained winds of 17 - 22 kts from 11 AM - 3 PM. Gusts of up to 23 - 28 kts are possible after 11 AM for all locations.

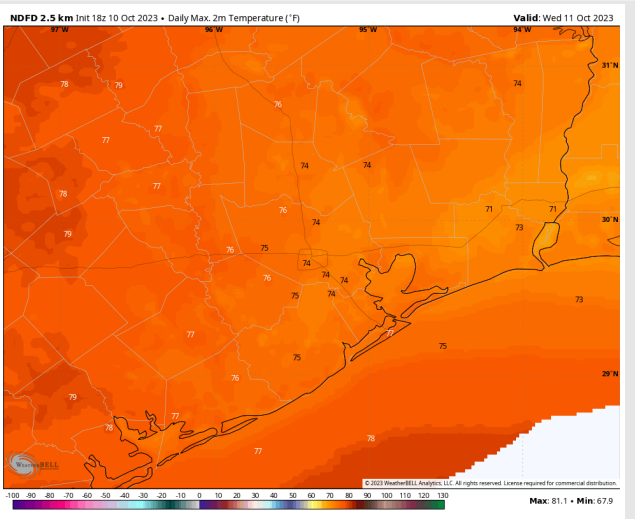
High Temps: **N of Morgan's Point:** Mid 70s F. **S of Morgan's Point:** Mid 70s F.

Visibility: Not anticipating any visibility concerns.

Precip Image: 8 AM CT



**Wind Gusts:
1 PM CT**



**High Temps
Wednesday**

Forecast Discussion

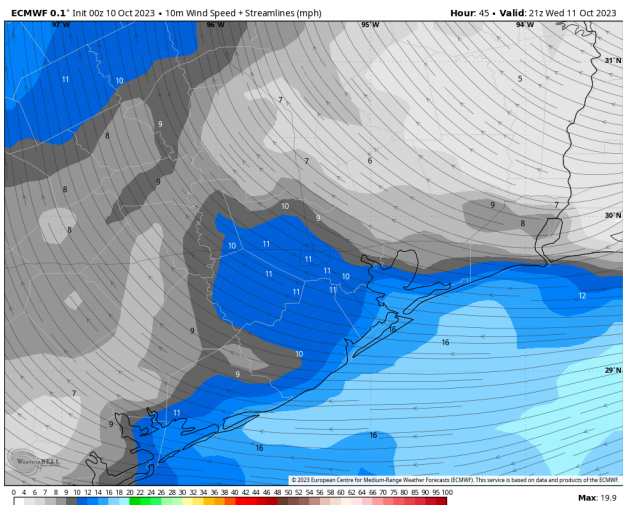
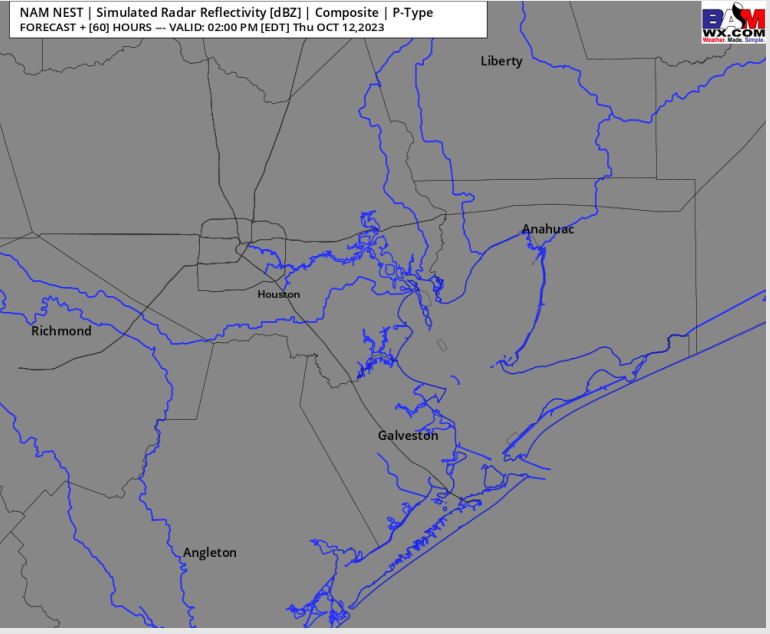
Precip: Favoring dry conditions for all locations, aside from a 10-20% chance of an isolated shower for the Boarding Station. Lower confidence is present after 7 PM, but the potential for ~20% chances can trickle north to locations south of Morgan's Point. The risk is for precipitation chances to trend wetter in the late PM, but remain uncertain.

Wind: Winds will be out of the ESE/E for the majority of the day. For Stations **N of Morgan's Point**, winds will be at 3-6 kts, increasing to 5 -10 kts towards noon. Winds **S of Morgan's Point** will remain at 8-13 kts for most of the day before weakening to 6 - 11 kts after 10PM.

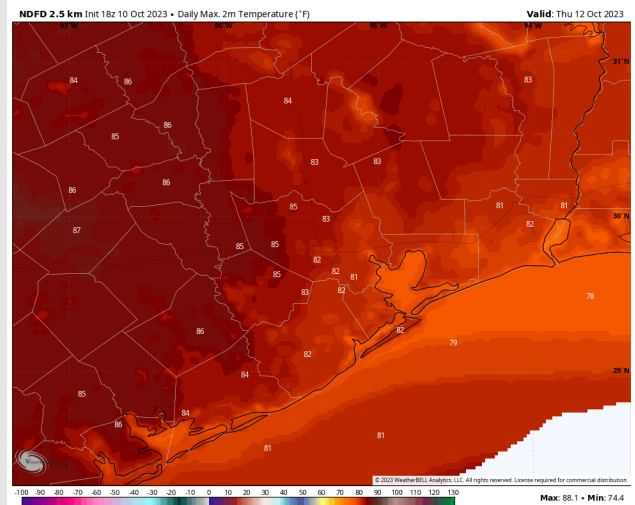
High Temps: **N of Morgan's Point:** Lower to Mid 80's. **S of Morgan's Point:** Lower 80s to 80 F.

Visibility: Not anticipating any visibility issues at this time.

Precip Image: 1 PM CT

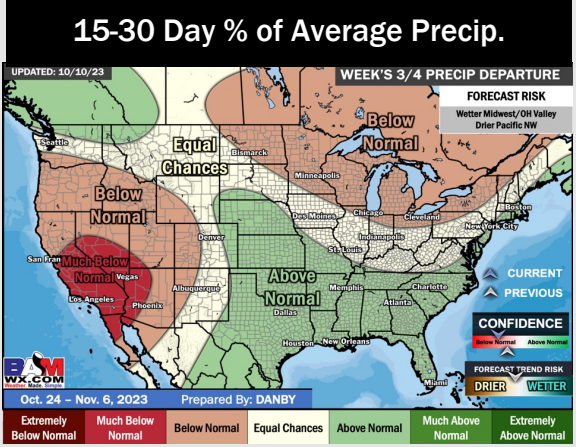
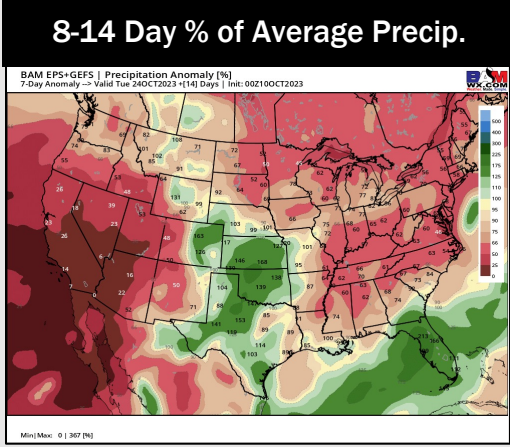
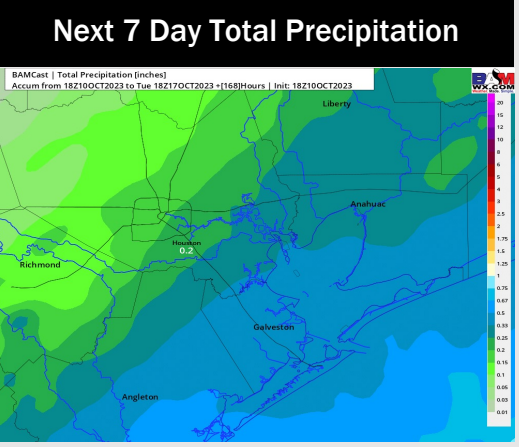
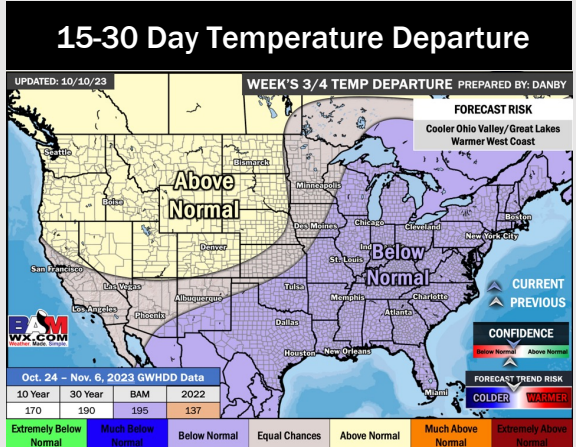
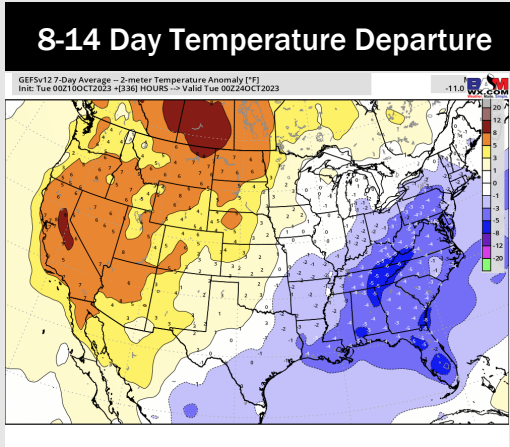
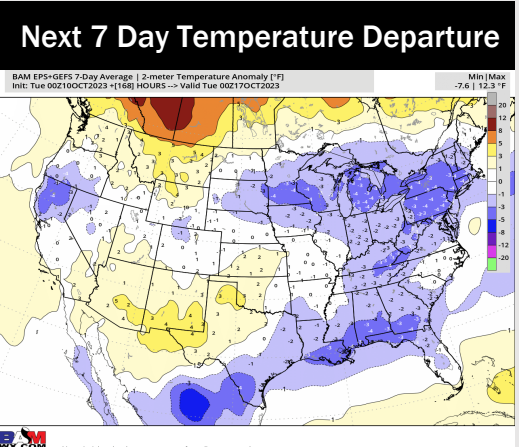


Wind Speed:
4 PM CT



High Temps
Thursday

Houston Pilots: 10/10/23



- Rain chances enter via a low-pressure system . Isolated rain chances will be possible through Friday before the weekend dries out. Temperatures are favored to remain slightly below normal this week.
- Generally drier and below normal temperatures are expected into the week 2 timeframe.
- Below normal temperatures and above normal chances for precipitation are favored in the weeks ¾ timeframe.