

Houston Pilots Forecast Package



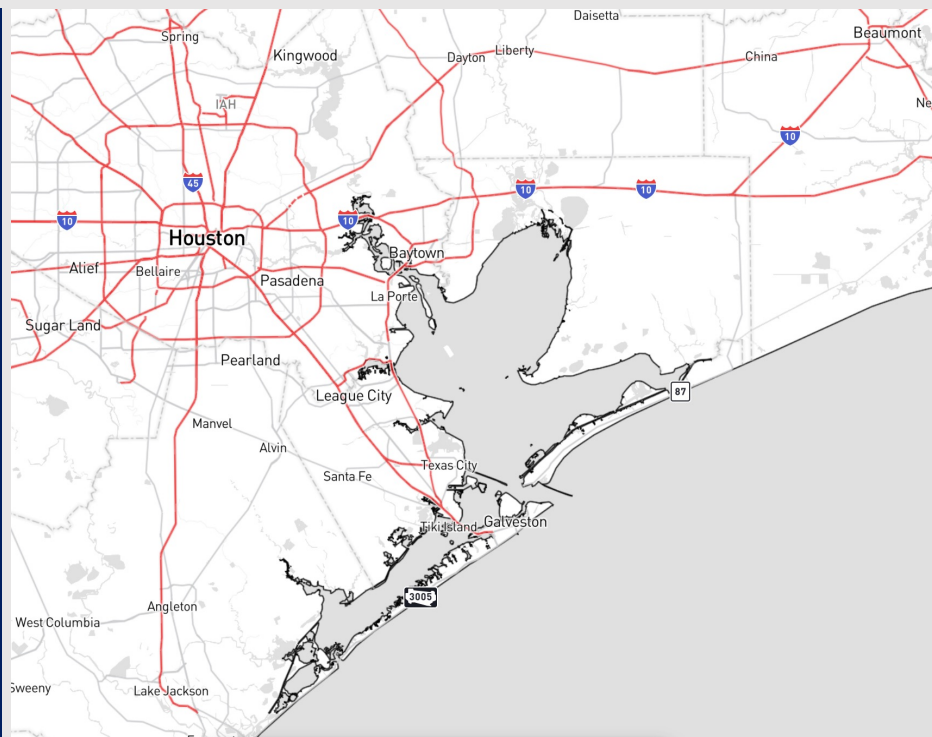
Updated: 2:00 PM CT

Monday, October 2, 2023

Forecaster: Jonathan Kipper

Weather Headlines

- Not anticipating tropical development in the Gulf of Mexico over the next 7-10 days.
- Majority of rain chances in the morning over the next 2 – 3 days secluded S of 11/12 and near the Boarding Station, with chances moving ashore in the afternoon.
- Elevated winds of 13-18 kts will persist over the next 2 – 3 days for Stations S of Morgan's Point
- Not anticipating any visibility concerns over the next few days.



Radar/NWS Alerts: 1:50 PM CT



As always, please do not hesitate to reach out to us with any forecast questions via the chat option on the Weather Porthole or our on-call number, **(317)-560-8122** press 1 for forecast questions.

Houston Pilots Visibility Chart (miles)



Time	Mon 1pm	Mon 2pm	Mon 3pm	Mon 4pm	Mon 5pm	Mon 6pm	Mon 7pm	Mon 8pm	Mon 9pm	Mon 10pm	Mon 11pm	Tue 12am	Tue 1am	Tue 2am	Tue 3am	Tue 4am	Tue 5am	Tue 6am	Tue 7am	Tue 8am	Tue 9am	Tue 10am	Tue 11am	Tue 12pm	Tue 1pm	Tue 2pm	Tue 3pm	Tue 4pm	Tue 5pm	Tue 6pm	Tue 7pm	Tue 8pm	Tue 9pm	Tue 10pm	Tue 11pm	Wed 12am
610 Bridge	10	10	10	10	10	10	10	10	10	10	10	10	10	10	10	10	10	10	10	10	10	10	10	10	10	10	10	10	10	10	10	10	10	10	10	10
Kinder 1	10	10	10	10	10	10	10	10	10	10	10	10	10	10	10	10	10	10	10	10	10	10	10	10	10	10	10	10	10	10	10	10	10	10	10	10
Greens Bayou	10	10	10	10	10	10	10	10	10	10	10	10	10	10	10	10	10	10	10	10	10	10	10	10	10	10	10	10	10	10	10	10	10	10	10	10
Shell Crude	10	10	10	10	10	10	10	10	10	10	10	10	10	10	10	10	10	10	10	10	10	10	10	10	10	10	10	10	10	10	10	10	10	10	10	10
Lynchburg Ferries	10	10	10	10	10	10	10	10	10	10	10	10	10	10	10	10	10	10	10	10	10	10	10	10	10	10	10	10	10	10	10	10	10	10	10	10
Exxon 3	10	10	10	10	10	10	10	10	10	10	10	10	10	10	10	10	10	10	10	10	10	10	10	10	10	10	10	10	10	10	10	10	10	10	10	10
Morgans Point	10	10	10	10	10	10	10	10	10	10	10	10	10	10	10	10	10	10	10	10	10	10	10	10	10	10	10	10	10	10	10	10	10	10	10	10
75/76	10	10	10	10	10	10	10	10	10	10	10	10	10	10	10	10	10	10	10	10	10	10	10	10	10	10	10	10	10	10	10	10	10	10	10	10
63/64	10	10	10	10	10	10	10	10	10	10	10	10	10	10	10	10	10	10	10	10	10	10	10	10	10	10	10	10	10	10	10	10	10	10	10	10
51/52	10	10	10	10	10	10	10	10	10	10	10	10	10	10	10	10	10	10	10	10	10	10	10	10	10	10	10	10	10	10	10	10	10	10	10	10
37/38	10	10	10	10	10	10	10	10	10	10	10	10	10	10	10	10	10	10	10	10	10	10	10	10	10	10	10	10	10	10	10	10	10	10	10	10
25/26	10	10	10	10	10	10	10	10	10	10	10	10	10	10	10	10	10	10	10	10	10	10	10	10	10	10	10	10	10	10	10	10	10	10	10	10
11/12	10	10	10	10	10	10	10	10	10	10	10	10	10	10	10	10	10	10	10	10	10	10	10	10	10	10	10	10	10	10	10	10	10	10	10	10
1 & 2 Bravo	10	10	10	10	10	10	10	10	10	10	10	10	10	10	10	10	10	10	10	10	10	10	10	10	10	10	10	10	10	10	10	10	10	10	10	10

NOTE: This is automated data that may/may not agree with the official BAM thinking that’s found on the daily slides or special visibility report slides. This data should be used as a guide only

Houston Pilots Wind Chart



Forecast Confidence



Example

Sustained wind 13 Knots
Gusts 18 Knots
Wind from the N

WS: 13
G:18
N

Time Knots	Mon 1pm	Mon 2pm	Mon 3pm	Mon 4pm	Mon 5pm	Mon 6pm	Mon 7pm	Mon 8pm	Mon 9pm	Mon 10pm	Mon 11pm	Tue 12am	Tue 1am	Tue 2am	Tue 3am	Tue 4am	Tue 5am	Tue 6am	Tue 7am	Tue 8am	Tue 9am	Tue 10am	Tue 11am	Tue 12pm	Tue 1pm	Tue 2pm	Tue 3pm	Tue 4pm	Tue 5pm	Tue 6pm	Tue 7pm	Tue 8pm	Tue 9pm	Tue 10pm	Tue 11pm	Wed 12am
610 Bridge	9	9	8	8	9	9	9	8	6	5	5	4	4	4	4	4	4	5	6	7	8	9	9	9	9	9	9	10	10	9	8	7	6	6	5	
	13	12	12	12	13	13	13	12	9	8	7	6	6	7	6	7	6	7	8	9	10	12	13	13	14	14	14	14	15	14	13	12	10	9	9	8
Kinder 1	E	E	E	ESE	ESE	ESE	ESE	SE	ESE	ESE	ESE	E	E	E	E	ENE	ENE	ENE	ENE	E	ENE	E	ESE	ESE	ESE	ESE	ESE	ESE	SE	ESE	ESE	ESE	ESE	ESE	ESE	
	9	9	8	8	9	9	9	8	6	5	5	4	4	4	4	4	4	5	6	7	8	9	9	9	9	9	9	10	10	9	8	7	6	6	5	
Greens Bayou	13	12	12	12	13	13	12	12	9	8	7	6	6	7	6	7	6	7	8	9	11	13	13	13	14	14	14	14	15	14	13	12	10	9	9	8
	E	E	E	ESE	ESE	ESE	ESE	SE	SE	ESE	ESE	E	E	E	E	ENE	ENE	ENE	ENE	E	ENE	E	ESE	ESE	ESE	ESE	ESE	ESE	SE	SE	ESE	ESE	ESE	ESE	ESE	
Shell Crude	9	9	9	9	9	9	9	8	6	5	5	4	4	5	4	5	5	5	6	7	8	9	9	9	9	9	10	10	10	9	9	7	6	6	6	
	13	12	12	12	13	13	12	11	9	8	7	7	7	7	6	7	6	7	8	10	11	13	13	13	13	14	14	14	15	14	13	12	10	9	10	9
Lynchburg Ferries	E	E	ESE	ESE	ESE	ESE	SE	SE	ESE	ESE	E	E	E	E	ENE	ENE	ENE	ENE	E	ENE	E	ESE	ESE	ESE	ESE	ESE	ESE	ESE	SE	SE	ESE	ESE	ESE	ESE	ESE	
	10	9	9	9	10	10	9	8	6	5	5	5	5	5	5	5	5	6	7	8	9	9	9	9	9	9	10	10	11	11	10	9	8	7	7	7
Exxon 3	12	12	12	12	13	13	12	11	9	8	7	7	7	7	7	7	7	8	10	11	13	13	12	13	13	14	15	15	14	13	12	11	10	10	9	
	E	E	ESE	ESE	ESE	ESE	SE	SE	ESE	ESE	ESE	ESE	E	E	E	ENE	ENE	ENE	ENE	E	E	E	ESE	ESE	ESE	ESE	ESE	ESE	ESE	SE	SE	ESE	ESE	ESE	ESE	
Morgans Point	10	10	11	11	13	12	11	11	10	8	8	8	8	8	8	8	8	8	9	9	10	11	11	11	11	11	12	13	13	12	12	11	10	10	10	
	13	13	13	13	14	15	15	14	13	12	10	10	10	10	10	10	10	10	10	11	11	12	13	13	13	14	15	16	16	17	16	15	14	13	12	13
75/76	E	E	ESE	ESE	ESE	ESE	ESE	ESE	ESE	ESE	ESE	ESE	E	E	E	E	E	ENE	ENE	ENE	E	E	ESE	ESE	ESE	ESE	ESE	ESE	ESE	ESE	ESE	ESE	ESE	ESE	ESE	
	11	12	13	13	15	15	14	14	13	11	10	11	11	11	12	11	12	12	13	12	13	12	12	13	12	13	14	15	16	17	16	15	15	15	16	
63/64	13	14	15	15	17	17	16	15	14	12	12	12	13	13	13	13	13	13	14	14	15	14	14	15	16	17	17	17	17	16	15	15	15	15	16	
	E	ESE	ESE	ESE	ESE	ESE	ESE	ESE	ESE	ESE	ESE	ESE	ESE	E	E	E	E	E	E	E	E	E	ESE	ESE	ESE	ESE	ESE	ESE	ESE	ESE	ESE	ESE	ESE	ESE	ESE	
51/52	14	14	14	14	14	15	14	13	12	11	11	12	12	12	12	12	12	13	13	13	13	13	13	13	13	14	14	14	15	15	14	14	14	14	14	
	E	E	ESE	ESE	ESE	ESE	ESE	ESE	ESE	ESE	ESE	ESE	ESE	ESE	E	E	E	E	E	E	E	ESE	ESE	ESE	ESE	ESE	ESE	ESE	ESE	ESE	ESE	ESE	ESE	ESE	ESE	
37/38	14	14	14	14	14	14	14	13	12	11	11	12	12	12	12	12	12	13	13	13	14	13	14	13	14	13	14	14	14	14	14	14	14	14	14	
	E	E	E	E	E	ESE	ESE	ESE	ESE	ESE	ESE	ESE	ESE	ESE	ESE	E	E	E	E	E	E	E	ESE	ESE	ESE	ESE	ESE	ESE	ESE	ESE	ESE	ESE	ESE	ESE	ESE	
25/26	14	14	13	13	13	13	12	12	11	10	10	11	11	12	11	11	11	11	11	12	12	13	13	13	13	13	13	13	13	13	13	12	12	12	13	
	16	16	15	15	15	15	14	14	12	12	12	12	12	13	13	12	12	13	12	13	13	14	14	15	15	15	15	15	14	14	14	14	14	14	14	15
11/12	E	E	E	E	E	E	ESE	ESE	ESE	ESE	ESE	ESE	ESE	ESE	ESE	ESE	ESE	E	E	ESE	E	E	ESE	ESE	ESE	ESE	E	ESE	ESE	ESE	ESE	ESE	ESE	ESE	ESE	
	14	14	13	13	13	13	12	12	11	11	11	11	12	12	12	12	11	12	12	12	12	13	13	13	13	12	12	12	12	13	13	13	13	13	13	14
1 & 2 Bravo	16	16	15	15	14	14	14	14	12	12	12	12	13	13	14	13	13	13	13	12	12	14	14	15	15	15	14	14	14	14	14	14	14	14	14	15
	E	E	E	E	E	E	E	E	ESE	ESE	ESE	ESE	ESE	ESE	ESE	ESE	ESE	ESE	ESE	ESE	ESE	ESE	ESE	ESE	ESE	ESE	ESE	ESE	ESE	ESE	ESE	ESE	ESE	ESE	ESE	
	16	15	14	14	14	14	14	14	13	13	13	13	14	14	14	14	14	14	15	14	15	15	15	14	16	14	14	13	14	14	15	15	15	16	17	
	F	F	F	F	F	F	F	F	F	F	F	F	F	F	F	F	F	F	F	F	F	F	F	F	F	F	F	F	F	F	F	F	F	F	F	

NOTE: This is automated data that may/may not agree with the official BAM thinking that's found on the daily slides.
This data should be used as a guide only

Houston Pilots: Mon. 10/2/2023

Forecast Discussion

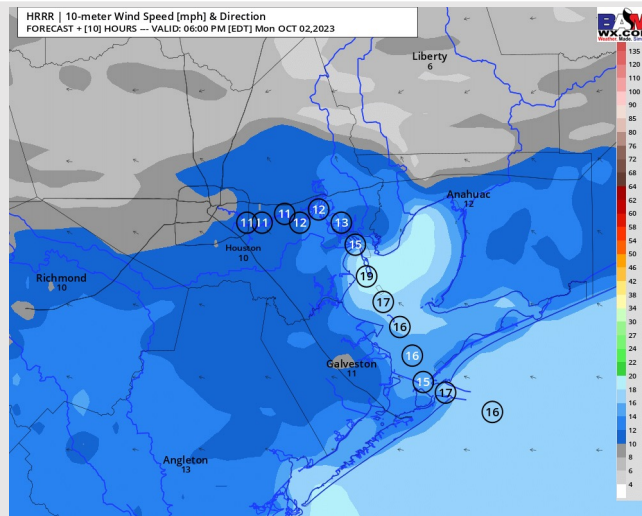
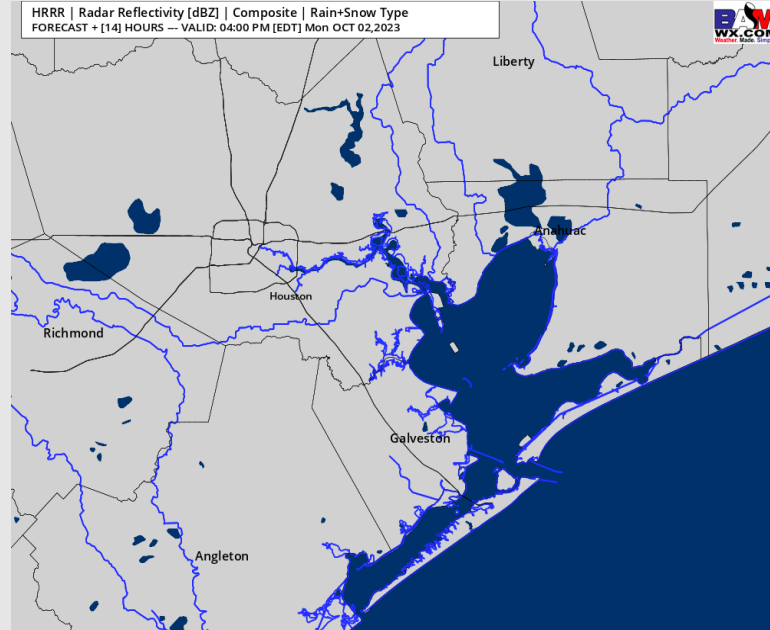
Precip: Favoring dry conditions for throughout the rest of the day as showers look to remain off to the SE.

Wind: Winds are expected to remain out of the E/SE for the remainder of the day. For Stations **N of Morgan's Point**, winds will continue at 8 - 12 kts before decreasing to 2-7 kts by 8 PM. Winds **S of Morgan's Point** will be 13-18 kts for the rest of the day. **Wind Gusts of 23-28 kts will be possible through 8 PM for all stations.**

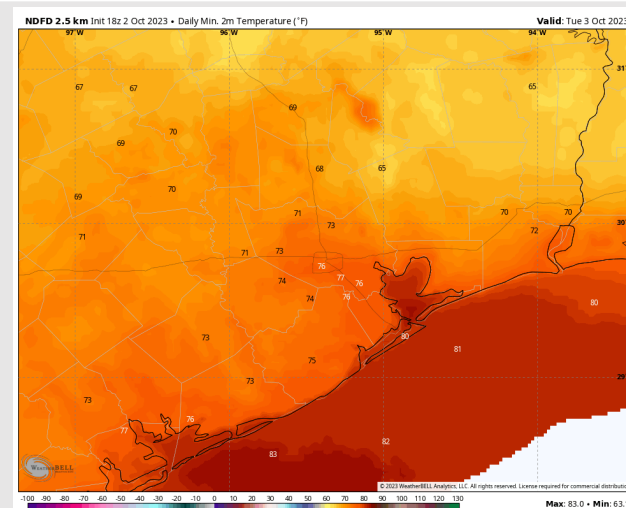
Low Temps: **N of Morgan's Point:** Mid/Upper 70s F. **S of Morgan's Point:** Low 80s F.

Visibility: No visibility concerns expected for today.

Precip Image: 3 PM CT



Wind Speed:
5 PM CT



Low Temps
Tuesday AM

Houston Pilots: Tue. 10/3/2023

Forecast Discussion

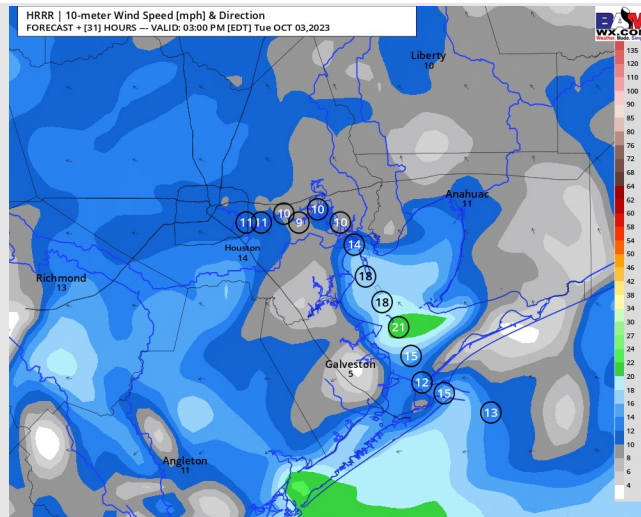
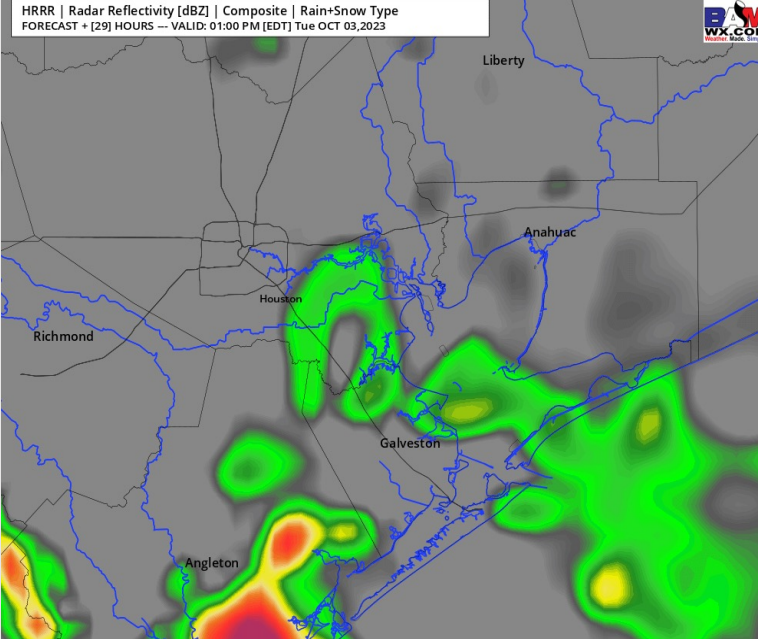
Precip: Stations S of 11/12 will see low-end isolated shower chances (20%) starting at 3 AM. Chances then increase to 30-40% for all stations towards 6 AM through 6 PM. After 6 PM, showers will taper off to a drizzle/light rain at ~10% for the remainder of the evening.

Wind: Winds will be out of the ESE to SE throughout the day. For Stations N of Morgan's Point, winds will begin the day relatively calm at 2-7 kts but will gradually increase to 7-12 kts by 11 AM and will decrease to 3-8 kts by 7 PM. Winds S of Morgan's Point will be 13-18 kts throughout most of the day with a slight decrease to 11-16kts after 6 PM. **Gusts reaching 22 - 25 kts will be possible near the Boarding Station after 8 AM and until 3 PM with a few gusty thunderstorms.**

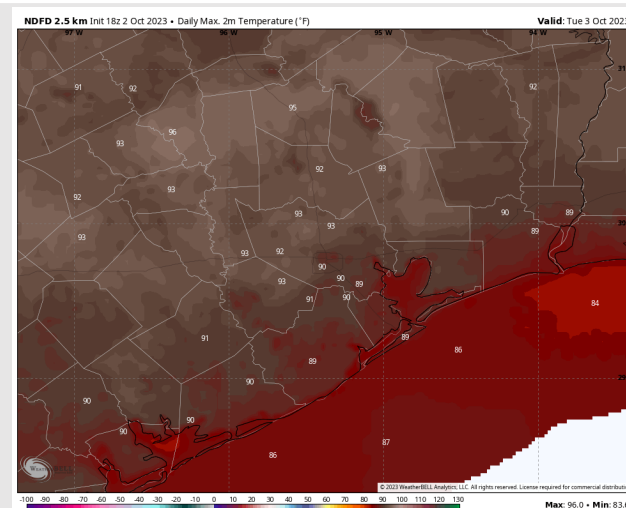
High Temps: N of Morgan's Point: Upper 80s to 90 F. S of Morgan's Point: Mid to upper 80s F.

Visibility: Not anticipating any visibility issues at this time.

Precip Image: 12 PM CT



Wind Speed:
2 PM CT



High Temps
Tuesday

Forecast Discussion

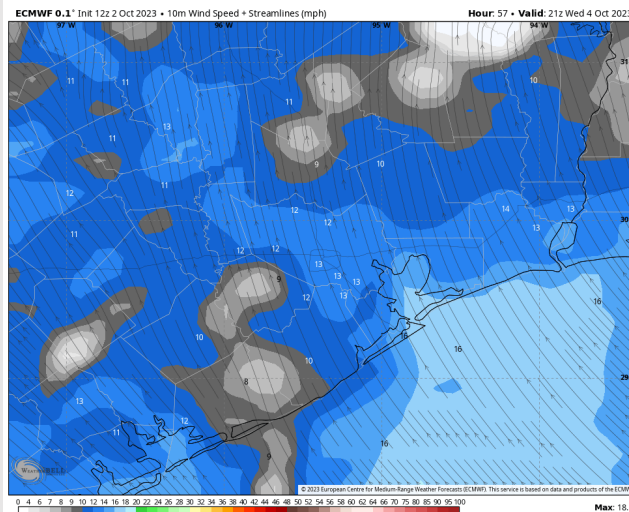
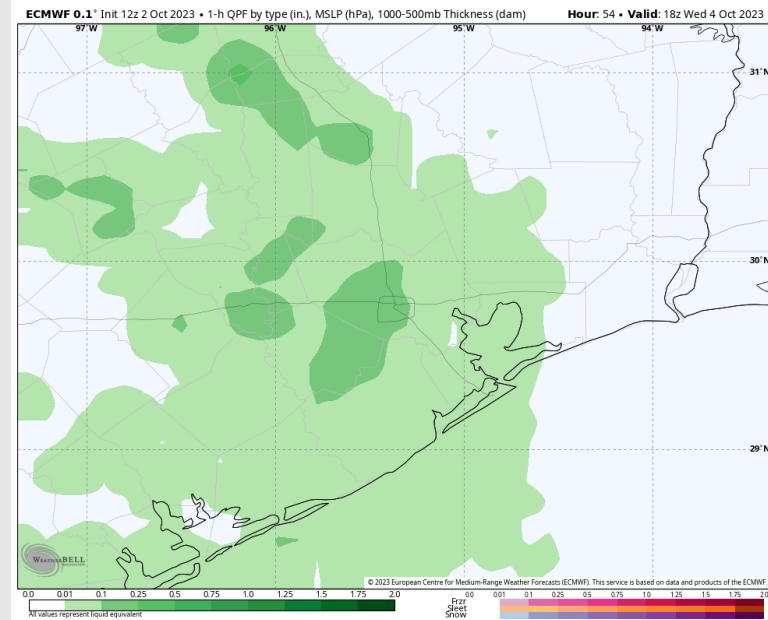
Precip: Isolated shower chances will be at play in the AM across all stations (20%). Towards 12 PM coverage will expand more to create scattered chances (30-40%) across all stations for the PM before coverage tapers off near 7 PM.

Wind: Winds will be out of the SE on Wednesday. For Stations **N of Morgan's Point**, winds will be at 2-7 kts but will gradually increase to 7-12 kts by 11 AM. Winds slightly decrease to 5 - 10 kts after 9 PM. Winds **S of Morgan's Point** will be 13-18 kts throughout the day. **Gusts reaching 20 - 23 kts will be possible near the Boarding Station after 5 PM.**

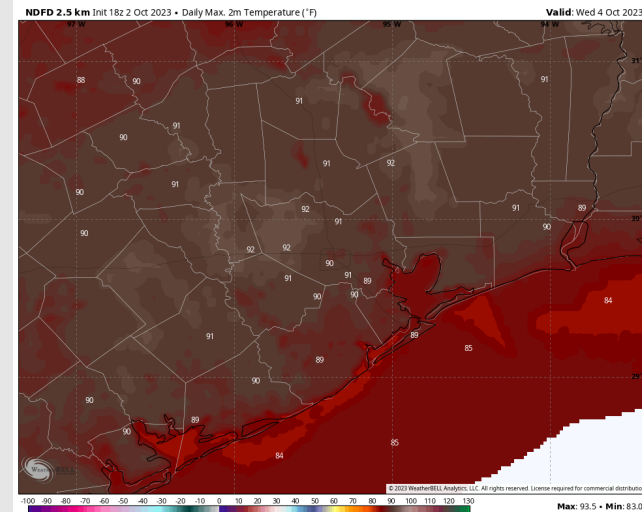
High Temps: **N of Morgan's Point:** Upper 80s to near 90 F. **S of Morgan's Point:** Mid to upper 80s F.

Visibility: Not anticipating any visibility issues currently.

Precip Image: 1 PM CT



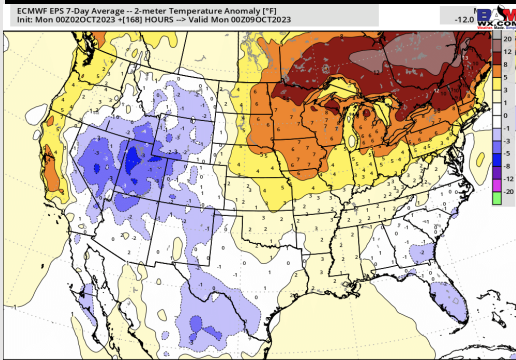
Wind Speed:
5 PM CT



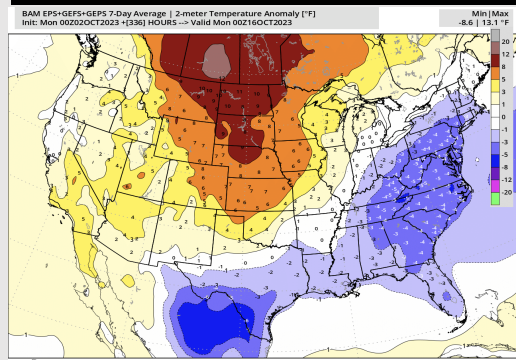
High Temps
Wednesday

Houston Pilots: 10/2/23

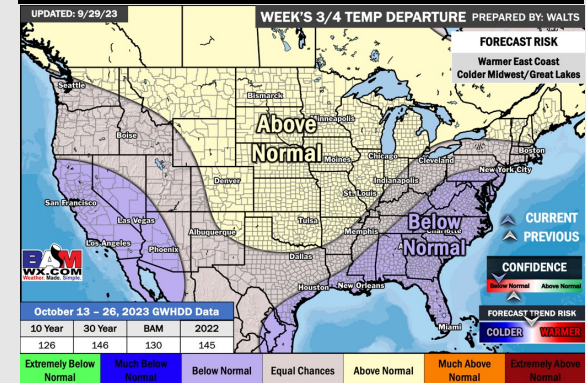
Next 7 Day Temperature Departure



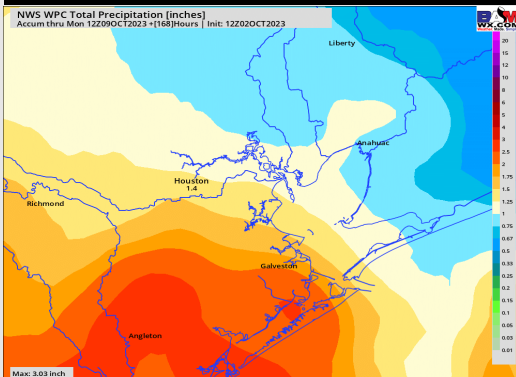
8-14 Day Temperature Departure



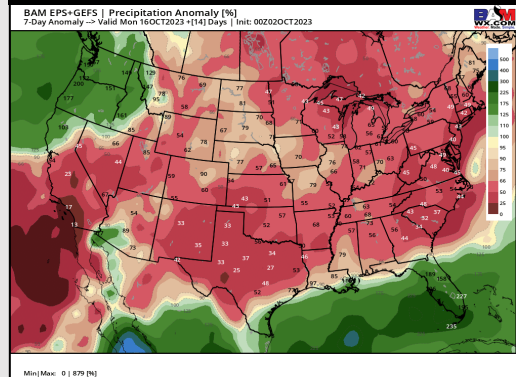
15-30 Day Temperature Departure



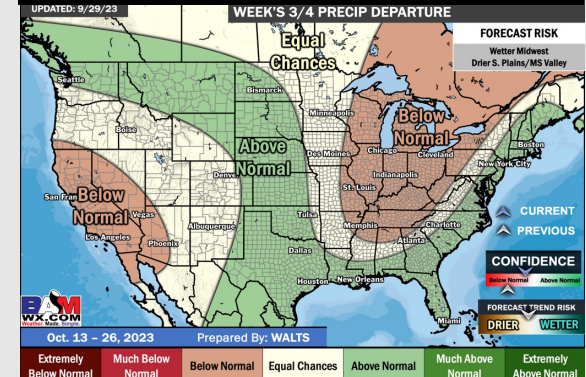
Next 7 Day Total Precipitation



8-14 Day % of Average Precip.



15-30 Day % of Average Precip.



- Very isolated shower chances at play for the Boarding Station today. Spotty shower chances look to be at play for every day this week. A cold front on Thu/Fri will look to cool temps. Until then, Temperatures will remain slightly above normal.
- Generally drier/slightly colder than average temperatures are expected into the week 2 timeframe.
- Below normal temperatures and above normal chances for precipitation are favored in the weeks ¾ timeframe.