

# Houston Pilots Forecast Package



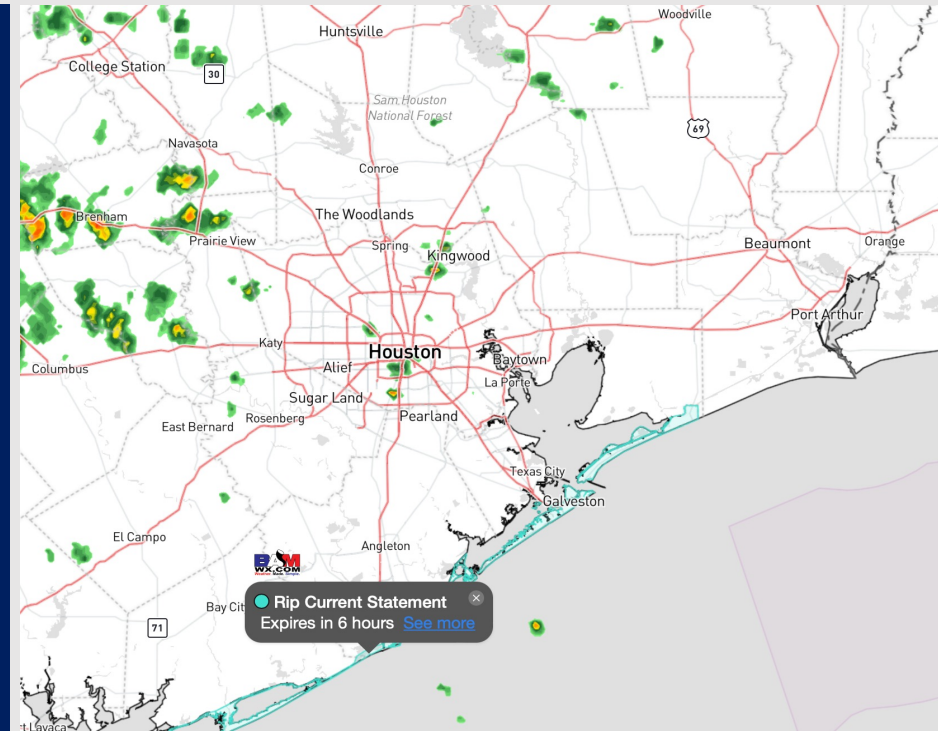
Updated: 2:15 PM CT

Wednesday, October 25, 2023

Forecaster: Alyssa Elliott

## Weather Headlines

- A few spotty chances for precipitation will be possible the next few days.
- Greatest precipitation chances come SUN/ MON with the passing of a cold front.
- **Some choppy waters will be possible today into tomorrow morning along with some slightly elevated SE winds.**



**Radar/NWS Alerts: 2:00 PM CT**



As always, please do not hesitate to reach out to us with any forecast questions via the chat option on the Weather Porthole or our on-call number, **(317)-560-8122** press 1 for forecast questions.

# Houston Pilots Visibility Chart (miles)



Time	Wed 1pm	Wed 2pm	Wed 3pm	Wed 4pm	Wed 5pm	Wed 6pm	Wed 7pm	Wed 8pm	Wed 9pm	Wed 10pm	Wed 11pm	Thu 12am	Thu 1am	Thu 2am	Thu 3am	Thu 4am	Thu 5am	Thu 6am	Thu 7am	Thu 8am	Thu 9am	Thu 10am	Thu 11am	Thu 12pm	Thu 1pm	Thu 2pm	Thu 3pm	Thu 4pm	Thu 5pm	Thu 6pm	Thu 7pm	Thu 8pm	Thu 9pm	Thu 10pm	Thu 11pm	Fri 12am		
610 Bridge	10	10	10	10	10	10	10	10	10	10	10	10	10	10	10	10	10	10	10	10	10	10	10	10	10	10	10	10	10	10	10	10	10	10	10	10	10	10
Kinder 1	10	10	10	10	10	10	10	10	10	10	10	10	10	10	10	10	10	10	10	10	10	10	10	10	10	10	10	10	10	10	10	10	10	10	10	10	10	10
Greens Bayou	10	10	10	10	10	10	10	10	10	10	10	10	10	10	10	10	10	10	10	10	10	10	10	10	10	10	10	10	10	10	10	10	10	10	10	10	10	10
Shell Crude	10	10	10	10	10	10	10	10	10	10	10	10	10	10	10	10	10	10	10	10	10	10	10	10	10	10	10	10	10	10	10	10	10	10	10	10	10	10
Lynchburg Ferries	10	10	10	10	10	10	10	10	10	10	10	10	10	10	10	10	10	10	10	10	10	10	10	10	10	10	10	10	10	10	10	10	10	10	10	10	10	10
Exxon 3	10	10	10	10	10	10	10	10	10	10	10	10	10	10	10	10	10	10	10	10	10	10	10	10	10	10	10	10	10	10	10	10	10	10	10	10	10	10
Morgans Point	10	10	10	10	10	10	10	10	10	10	10	10	10	10	10	10	10	10	10	10	10	10	10	10	10	10	10	10	10	10	10	10	10	10	10	10	10	10
75/76	10	10	10	10	10	10	10	10	10	10	10	10	10	10	10	10	10	10	10	10	10	10	10	10	10	10	10	10	10	10	10	10	10	10	10	10	10	10
63/64	10	10	10	10	10	10	10	10	10	10	10	10	10	10	10	10	10	10	10	10	10	10	10	10	10	10	10	10	10	10	10	10	10	10	10	10	10	10
51/52	10	10	10	10	10	10	10	10	10	10	10	10	10	10	10	10	10	10	10	10	10	10	10	10	10	10	10	10	10	10	10	10	10	10	10	10	10	10
37/38	10	10	10	10	10	10	10	10	10	10	10	10	10	10	10	10	10	10	10	10	10	10	10	10	10	10	10	10	10	10	10	10	10	10	10	10	10	10
25/26	10	10	10	10	10	10	10	10	10	10	10	10	10	10	10	10	10	10	10	10	10	10	10	10	10	10	10	10	10	10	10	10	10	10	10	10	10	10
11/12	10	10	10	10	10	10	10	10	10	10	10	10	10	10	10	10	10	10	10	10	10	10	10	10	10	10	10	10	10	10	10	10	10	10	10	10	10	10
1 & 2 Bravo	10	10	10	10	10	10	10	10	10	10	10	10	10	10	10	10	9	9	9	9	9	9	9	9	9	9	9	9	9	9	9	9	9	9	9	9	9	9

**NOTE: This is automated data that may/may not agree with the official BAM thinking that's found on the daily slides or special visibility report slides. This data should be used as a guide only**

# Houston Pilots Wind Chart



## Forecast Confidence



## Example

Sustained wind 13 Knots  
Gusts 18 Knots  
Wind from the N

WS: 13  
G:18  
N

Time Knots	Wed 1pm	Wed 2pm	Wed 3pm	Wed 4pm	Wed 5pm	Wed 6pm	Wed 7pm	Wed 8pm	Wed 9pm	Wed 10pm	Wed 11pm	Thu 12am	Thu 1am	Thu 2am	Thu 3am	Thu 4am	Thu 5am	Thu 6am	Thu 7am	Thu 8am	Thu 9am	Thu 10am	Thu 11am	Thu 12pm	Thu 1pm	Thu 2pm	Thu 3pm	Thu 4pm	Thu 5pm	Thu 6pm	Thu 7pm	Thu 8pm	Thu 9pm	Thu 10pm	Thu 11pm	Fri 12am	
610 Bridge	11	13	8	9	9	9	9	8	8	8	7	7	7	6	6	7	7	7	6	7	8	9	9	9	10	10	9	10	10	10	10	9	9	7	7	7	6
	18	21	17	18	17	20	21	22	22	22	20	19	17	18	11	11	10	10	11	12	13	14	14	15	15	14	15	15	15	15	14	13	11	11	10	9	
	SE	SE	ESE	ESE	SE	SE	SE	SE	SE	SE	SE	SE	SE	SE	SE	SE	SE	SE	SE	SE	SSE	SSE	SSE	SSE	SSE	SSE	SSE	SSE	SSE	SE	SE	SE	SE	SE	SE	SE	
Kinder 1	12	13	8	9	9	9	9	8	8	8	7	7	7	6	6	7	7	7	6	7	8	9	9	9	10	10	9	10	10	10	9	9	7	7	7	6	
	18	21	18	18	18	21	22	22	22	22	19	19	19	17	18	11	11	10	10	11	12	13	14	14	15	15	14	15	15	15	15	15	13	11	11	10	9
	SE	SE	ESE	SE	SE	SE	SE	SE	SE	SE	SE	SE	SE	SE	SE	SE	SE	SE	SE	SE	SSE	SSE	SSE	SSE	SSE	SSE	SSE	SSE	SSE	SE	SE	SE	SE	SE	SE	SE	
Greens Bayou	12	13	8	9	9	9	9	8	8	8	7	7	7	6	6	7	7	7	6	7	8	9	9	9	10	10	9	10	10	10	9	9	7	7	7	6	
	19	22	21	19	19	22	22	23	23	22	19	20	19	17	19	12	11	10	10	11	12	13	14	14	15	15	15	15	16	15	15	13	11	11	10	9	
	SE	SE	ESE	SE	SE	SE	SE	SE	SE	SE	SE	SE	SE	SE	SE	SE	SE	SE	SE	SE	SSE	SSE	SSE	SSE	SSE	SSE	SSE	SSE	SSE	SE	SE	SE	SE	SE	SE	SE	
Shell Crude	13	13	9	10	10	9	9	9	9	8	7	8	7	6	7	8	7	7	7	7	8	9	9	9	10	10	10	10	10	10	10	9	7	7	7	6	
	20	23	22	20	20	22	22	23	23	22	20	19	17	20	12	11	10	10	11	12	13	14	14	15	15	15	15	16	15	15	13	11	11	10	9		
	SE	SE	SE	SE	SE	SE	SE	SE	SE	SE	SE	SE	SE	SE	SE	SE	SE	SE	SE	SE	SE	SSE	SSE	SSE	SSE	SSE	SSE	SSE	SSE	SE	SE	SE	SE	SE	SE	SE	
Lynchburg Ferries	12	14	10	10	10	10	9	9	9	8	7	8	8	6	8	9	8	7	7	8	8	9	10	10	10	11	11	11	11	11	10	9	8	8	7	7	
	20	23	23	20	19	22	22	23	23	23	20	21	19	17	20	12	11	10	10	11	12	13	14	14	15	15	16	16	16	15	13	12	11	11	9	9	
	SE	SE	SE	SE	SE	SE	SE	SE	SE	SE	SE	SE	SE	SE	SE	SE	SE	SE	SE	SE	SE	SSE	SSE	SSE	SSE	SSE	SSE	SSE	SSE	SE	SE	SE	SE	SE	SE	SE	
Exxon 3	13	12	11	12	11	10	9	10	9	9	8	8	8	7	8	9	9	8	8	8	9	9	10	10	11	11	11	11	12	11	10	9	8	8	7	7	
	20	22	23	21	20	22	22	23	23	23	20	20	17	20	13	12	11	11	12	13	14	14	15	16	16	16	16	16	15	13	12	11	11	10	10	9	
	SE	SE	SE	SE	SE	SE	SE	SE	SE	SE	SE	SE	SE	SE	SE	SE	SE	SE	SE	SE	SE	SSE	SSE	SSE	SSE	SSE	SSE	SSE	SSE	SE	SE	SE	SE	SE	SE	SE	
Morgans Point	13	9	12	12	11	10	11	11	12	10	10	9	8	10	10	9	9	10	10	9	9	10	10	11	11	11	12	13	13	12	11	10	9	9	9	9	
	21	22	23	21	22	22	21	23	23	23	19	20	19	17	20	13	12	12	12	13	13	14	14	15	16	17	17	17	16	15	14	13	12	11	10	10	
	SE	SE	SE	SE	ESE	ESE	ESE	ESE	ESE	ESE	SE	SE	SE	ESE	SE	SE	SE	SE	SE	SE	SE	SE	SE	SE	SE	SE	SE	SE	SE	SE	SE	SE	SE	SE	SE		
75/76	13	9	13	12	13	13	12	13	13	14	11	11	11	10	12	12	12	11	11	12	11	11	12	11	11	12	13	13	14	13	12	11	10	10	10	10	
	21	24	22	21	22	22	21	23	23	23	18	19	18	16	20	14	14	13	13	13	13	13	14	14	15	16	17	18	18	16	15	14	13	12	12	12	
	ESE	ESE	SE	SE	ESE	ESE	ESE	ESE	ESE	ESE	SE	SE	ESE	SE	SE	SE	SE	SE	SE	SE	SE	SE	SE	SE	SE	SE	SE	SE	SE	SE	SE	SE	SE	SE	SE		
63/64	12	14	11	10	13	12	12	14	14	14	11	11	10	10	10	13	12	12	11	12	12	11	12	11	11	11	13	13	13	14	12	12	11	10	10	10	
	20	25	21	20	21	21	20	22	22	22	17	19	17	15	16	14	14	13	13	13	13	13	14	14	15	16	17	17	16	15	14	13	12	11	11	11	
	ESE	ESE	ESE	ESE	ESE	ESE	ESE	ESE	ESE	ESE	SE	SE	ESE	SE	SE	SE	SE	SE	SE	SE	SE	SE	SE	SE	SE	SE	SE	SE	SE	SE	SE	SE	SE	SE	SE	SE	
51/52	10	16	11	11	13	12	12	14	14	13	10	11	10	9	9	12	12	11	11	11	11	11	11	11	11	11	12	12	12	13	12	11	10	10	10	10	
	21	25	21	20	21	21	18	21	22	21	17	18	16	16	15	13	13	13	12	12	13	14	14	14	15	16	16	16	16	15	13	12	11	11	11	11	
	ESE	ESE	ESE	ESE	ESE	ESE	ESE	ESE	ESE	ESE	SE	SE	ESE	SE	SE	SE	SE	SE	SE	SE	SE	SE	SE	SE	SE	SE	SE	SE	SE	SE	SE	SE	SE	SE	SE	SE	
37/38	11	14	12	12	13	12	11	13	13	13	10	10	9	9	8	11	11	11	11	10	11	11	11	11	11	11	11	11	12	12	11	10	9	9	9	9	
	22	23	21	21	20	21	18	20	21	21	17	18	16	16	14	13	12	12	12	12	13	14	14	14	15	15	16	16	16	15	14	13	12	11	11	11	
	ESE	ESE	ESE	ESE	ESE	ESE	ESE	ESE	ESE	ESE	SE	SE	ESE	SE	SE	SE	SE	SE	SE	SE	SE	SE	SE	SE	SE	SE	SE	SE	SE	SE	SE	SE	SE	SE	SE	SE	
25/26	13	13	13	12	12	12	10	12	13	12	10	10	9	9	7	10	10	9	9	10	11	10	11	10	11	10	11	11	11	11	10	9	9	8	8	8	
	24	22	21	20	19	20	17	20	23	20	18	18	16	18	14	12	12	11	12	13	13	14	14	14	14	15	15	14	13	12	12	11	11	11	11		
	ESE	ESE	ESE	ESE	ESE	ESE	ESE	ESE	ESE	ESE	SE	SE	ESE	SE	SE	SE	SE	SE	SE	SE	SE	SE	SE	SE	SE	SE	SE	SE	SE	SE	SE	SE	SE	SE	SE	SE	
11/12	14	13	13	12	13	12	11	13	15	13	12	11	10	10	8	10	10	10	10	9	11	11	10	10	10	10	10	10	10	10	9	9	9	9	9		
	22	22	21	20	19	20	18	21	24	21	20	19	16	18	15	12	12	12	12	12	13	13	13	14	14	14	14	14	14	13	12	12	11	11	11	11	
	ESE	ESE	ESE	ESE	E	ESE	ESE	ESE	ESE	ESE	SE	SE	ESE	SE	SE	SE	SE	SE	SE	SE	SE	SE	SE	SE	SE	SE	SE	SE	SE	SE	SE	SE	SE	SE	SE	SE	
1 & 2 Bravo	13	13	13	12	12	13	13	15	17	14	14	13	11	11	12	13	13	13	12	12	12	12	12	12	11	11	10	11	11	11	11	11	11	11	11		
	21	20	20	18	18	20	21	23	25	22	23	22	19	18	19	14	14	14	13	13	13	13	14	14	14	14	14	13	14	13	12	12	12	12	12		
	ESE	ESE	ESE	ESE	E	ESE	ESE	ESE	ESE	ESE	SE	SE	ESE	SE	SE	SE	SE	SE	SE	SE	SE	SE	SE	SE	SE	SE	SE	SE	SE	SE	SE	SE	SE	SE	SE		

NOTE: This is automated data that may/may not agree with the official BAM thinking that's found on the daily slides. This data should be used as a guide only

## Forecast Discussion

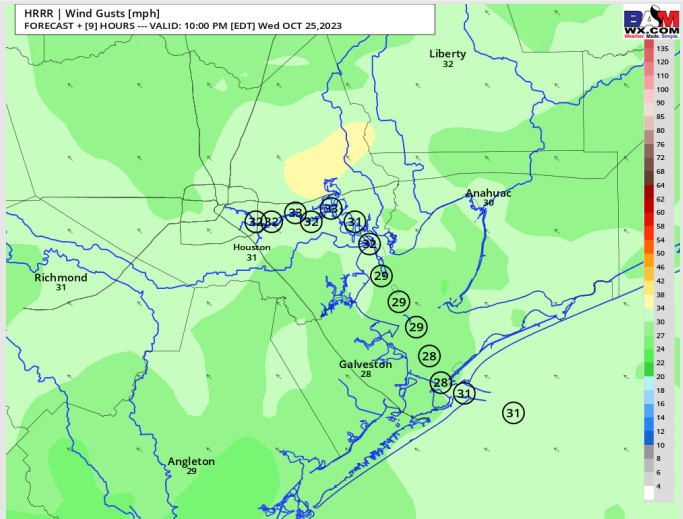
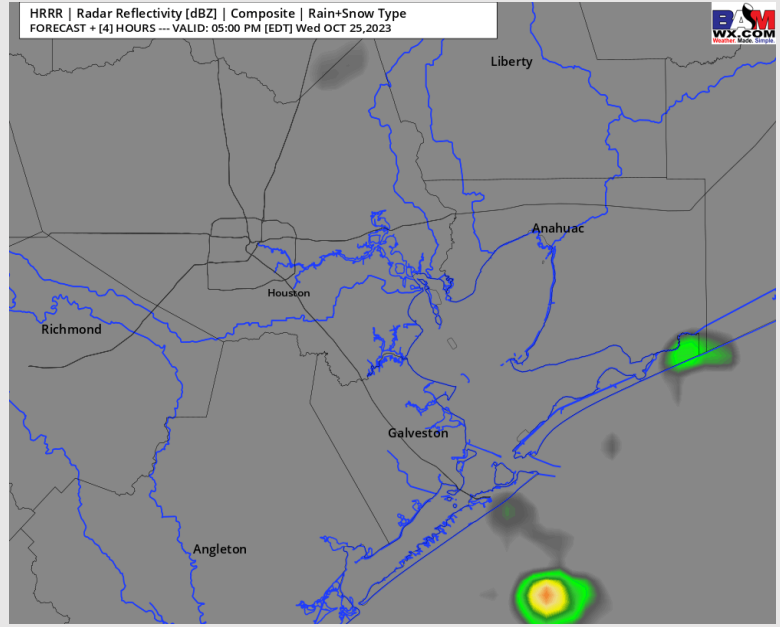
**Precip:** Isolated shower / storm chances possible across all stations through the mid afternoon. Expecting the greatest chances to be now through 8 PM (30 – 40%). Expecting mostly dry time there after with only isolated chances of a brief passing shower through midnight.

**Wind:** Winds will be out of the SE for the entire day Wednesday. Winds **N of Morgan's Point** at 10 - 15 kts the rest of the day. Winds **S of Morgan's Point** this afternoon at 13-17 kts by 4 PM. After 7 PM, need to watch for winds to continue to increase a bit to 18 – 22 kts (windiest towards the Boarding Station). **Along with wind gusts of 23 – 30 kts (especially now through 10 PM) wave heights of 3-5 feet will also be possible for the boarding station. Greatest risk for this from 7 PM today to 7 AM THU.**

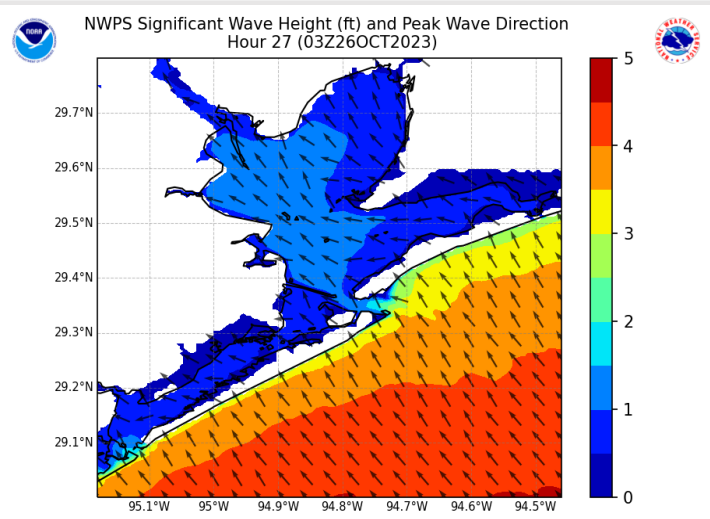
**Low Temps:** **N of Morgan's Point:** Low to Mid 70's F. **S of Morgan's Point:** Mid 70's F

**Visibility:** Not anticipating any visibility issues currently.

## Precip Image: 4 PM CT



**Wind Gusts:  
9 PM CT**



**Max Wave Heights  
11 PM CT WED**



# Houston Pilots: Thu. 10/26/2023



## Forecast Discussion

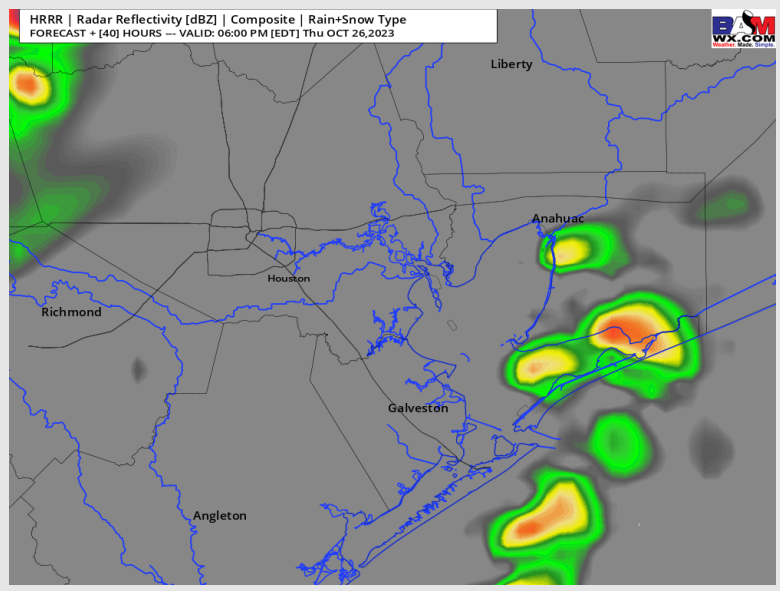
**Precip:** Main risk window will be starting around 6 AM for spotty showers/drizzle (20%) with chances picking up towards 12 PM for isolated to scattered showers/ storms (25%). Confidence is slightly lower than normal into tomorrow afternoon regarding coverage. However, scattered storms from 3 PM through midnight will be possible (30%).

**Wind:** Winds out of the SSE / SE throughout the day Thursday. For Stations N of Morgan's Point, winds will be at 5-10 kts through 10 AM before increasing to 10 - 15 kts. For stations S of Morgan's Point winds will be 10-15 knots for much of the day. Gusts to 17 mph will be possible in the afternoon, especially for areas closer to the Boarding Station.

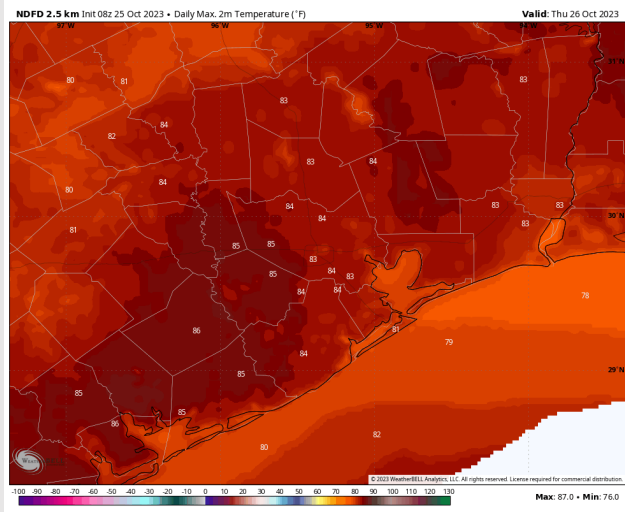
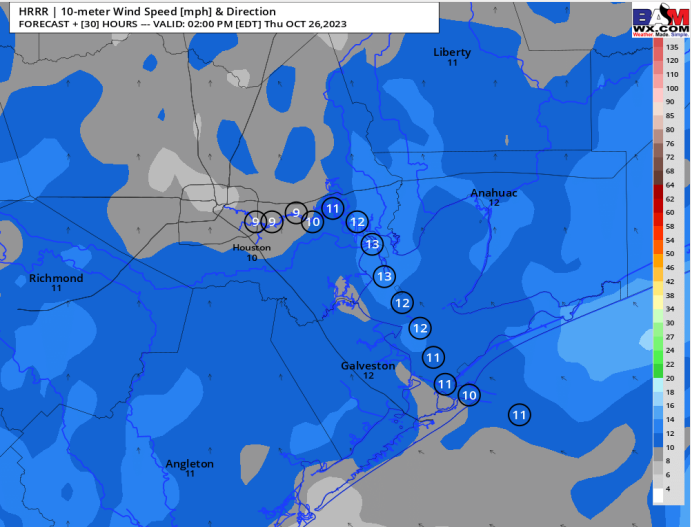
**High Temps:** N of Morgan's Point: Lower to Mid 80's F. S of Morgan's Point: Upper 70s to near 80 F.

**Visibility:** Not anticipating any visibility issues currently.

## Precip Image: 5 PM CT



Wind Speed:  
1 PM CT



High Temps  
Thursday

# Houston Pilots: Fri. 10/27/2023



## Forecast Discussion

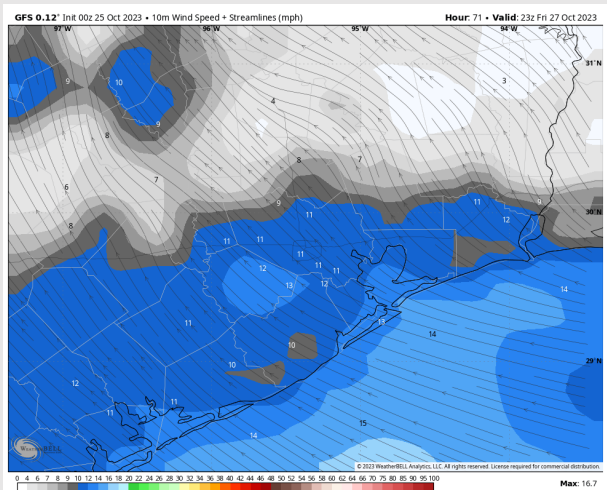
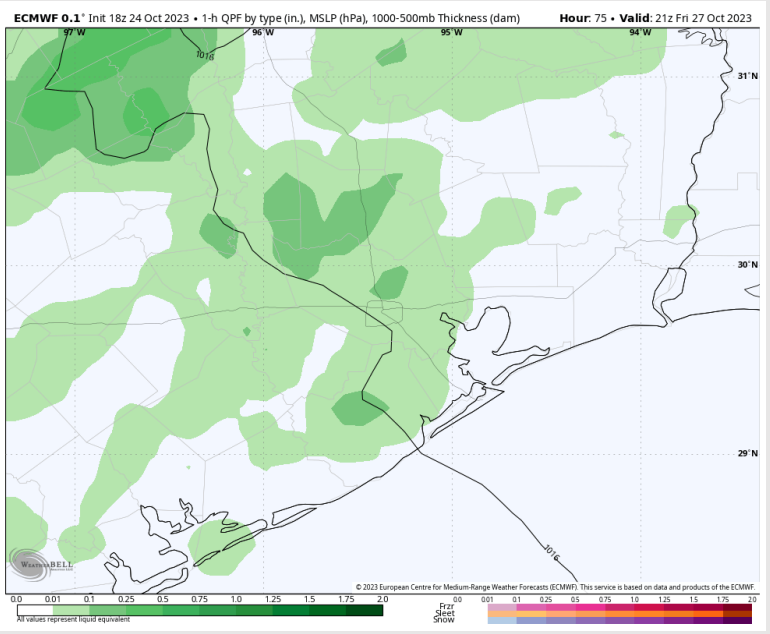
**Precip:** Any activity lingering from THU night should be winding down getting into FRI AM. We will need to watch where a boundary sets up into FRI afternoon. Current indications show it sets up just west. However, with this in proximity, will keep chances for isolated to scattered storms in, especially from 12 PM – 7 PM (20%).

**Wind:** Winds will remain out of the SE through remainder of the day today. Winds N of Morgan's Point: Winds will remain at 3 – 8 kts throughout the day Friday. S of Morgan's Point will be at 8 - 13 kts through 7 AM before decreasing slightly to 4 – 9 kts until 7 PM. After 7 PM winds will increase again up to 9 – 14 kts for the remainder of the evening.

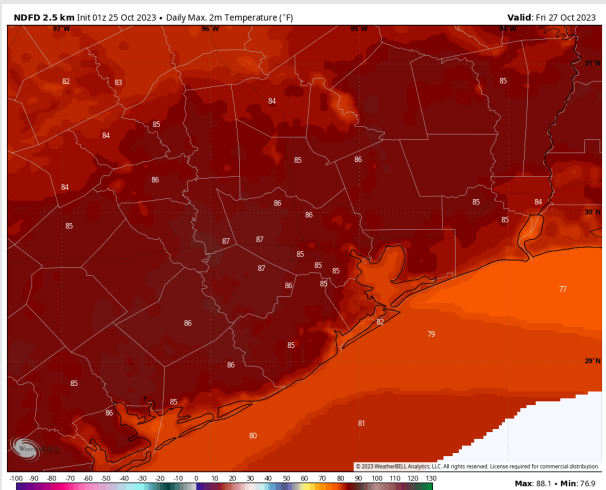
**High Temps:** N of Morgan's Point: Mid 80's F. S of Morgan's Point: Mid to Upper 70s F

**Visibility:** No visibility concerns for FRI.

## Precip Image: 4 PM CT



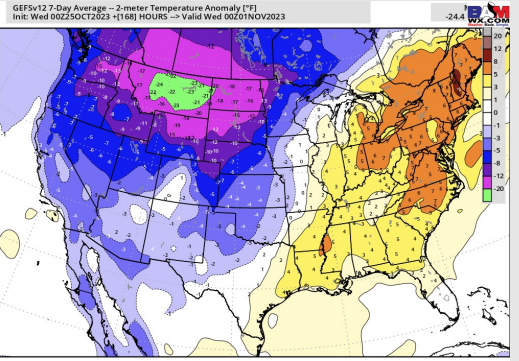
Wind Speed  
10 PM CT



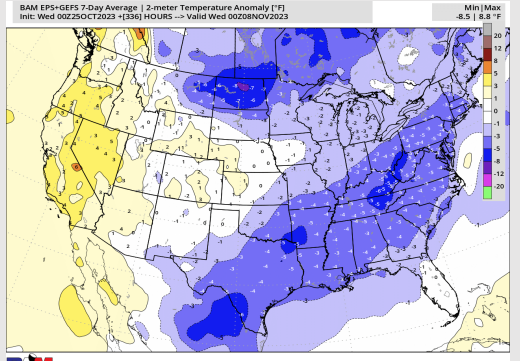
High Temps  
Friday

# Houston Pilots: 10/25/23

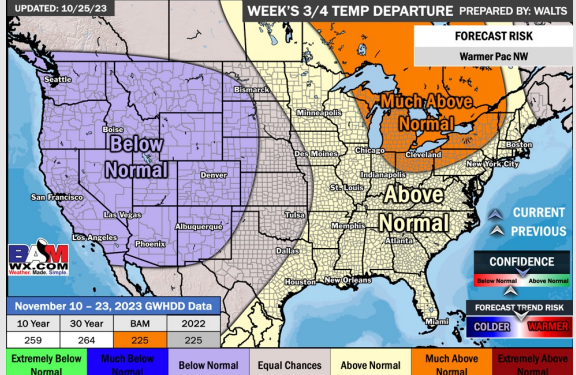
## Next 7 Day Temperature Departure



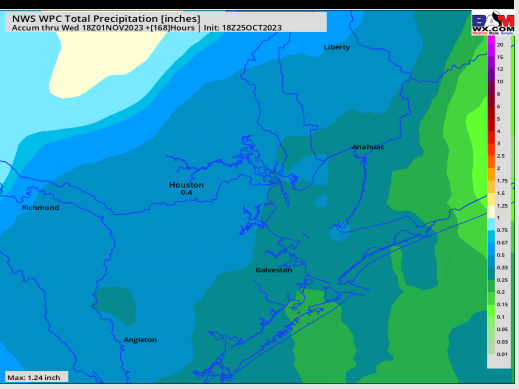
## 8-14 Day Temperature Departure



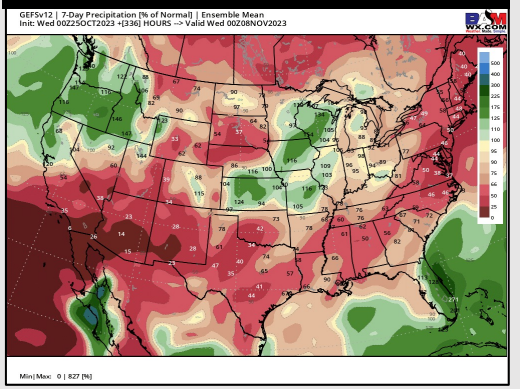
## 15-30 Day Temperature Departure



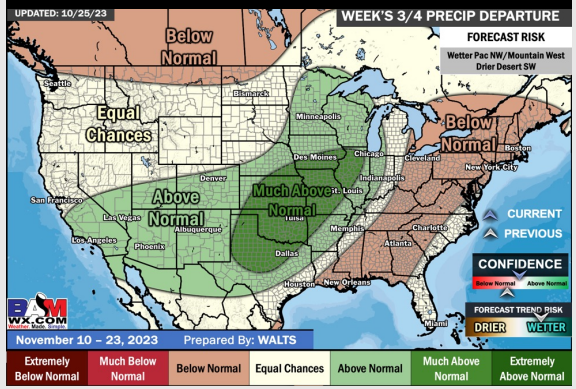
## Next 7 Day Total Precipitation



## 8-14 Day % of Average Precip.



## 15-30 Day % of Average Precip.



- Outside of the chances mentioned in the slides above, we will also need to watch SUN/ MON for a cold front to pass, bringing elevated chances for rain. Until that front passes, temperatures are expected to remain above normal.
- Slightly below normal rainfall and below normal temperatures are expected into the week 2 timeframe.
- Above normal temperatures and seasonal to below normal chances for precipitation are favored in the weeks 3/4 timeframe.