

Houston Pilots Forecast Package



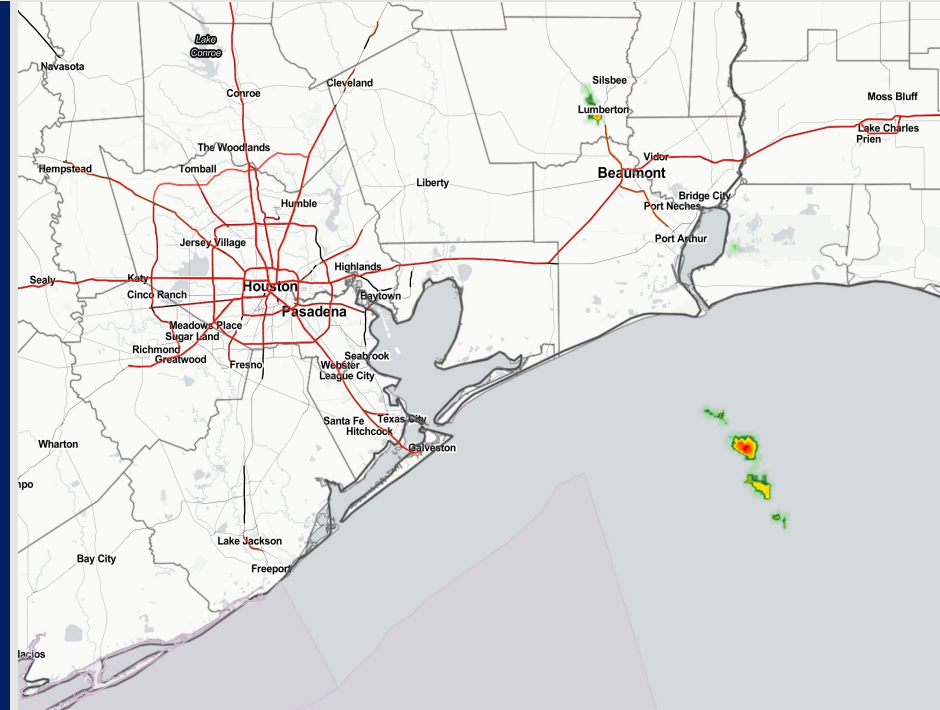
Updated: 5:00 AM CT

Wednesday, October 25, 2023

Forecaster: Matt Griffin

Weather Headlines

- A few spotty chances for precipitation will be possible the next few days.
- Greatest precipitation chances come SUN/MON with the passing of a cold front.
- **Some choppy waters will be possible today into tomorrow morning along with some slightly elevated SE winds.**



Radar/NWS Alerts: 5:00 AM CT



As always, please do not hesitate to reach out to us with any forecast questions via the chat option on the Weather Porthole or our on-call number, **(317)-560-8122** press 1 for forecast questions.

Houston Pilots Visibility Chart (miles)



Time	Wed 3am	Wed 4am	Wed 5am	Wed 6am	Wed 7am	Wed 8am	Wed 9am	Wed 10am	Wed 11am	Wed 12pm	Wed 1pm	Wed 2pm	Wed 3pm	Wed 4pm	Wed 5pm	Wed 6pm	Wed 7pm	Wed 8pm	Wed 9pm	Wed 10pm	Wed 11pm	Thu 12am	Thu 1am	Thu 2am	Thu 3am	Thu 4am	Thu 5am	Thu 6am	Thu 7am	Thu 8am	Thu 9am	Thu 10am	Thu 11am	Thu 12pm	Thu 1pm	Thu 2pm
610 Bridge	10	10	10	10	10	10	10	10	10	10	10	10	10	10	10	10	10	10	10	10	10	10	10	10	10	10	10	10	10	9	9	10	10	10	10	10
Kinder 1	10	10	10	10	10	10	10	10	10	10	10	10	10	10	10	10	10	10	10	10	10	10	10	10	10	10	10	10	10	9	9	10	10	10	10	10
Greens Bayou	10	10	10	10	10	10	10	10	10	10	10	10	10	10	10	10	10	10	10	10	10	10	10	10	10	10	10	10	10	9	9	10	10	10	10	10
Shell Crude	10	10	10	10	10	10	10	10	10	10	10	10	10	10	10	10	10	10	10	10	10	10	10	10	10	10	10	10	10	9	9	10	10	10	10	10
Lynchburg Ferries	10	10	10	10	10	10	10	10	10	10	10	10	10	10	10	10	10	10	10	10	10	10	10	10	10	10	10	10	10	9	9	10	10	10	10	10
Exxon 3	10	10	10	10	10	10	10	10	10	10	10	10	10	10	10	10	10	10	10	10	10	10	10	10	10	10	10	10	10	9	9	10	10	10	10	10
Morgans Point	10	10	10	10	10	10	10	10	10	10	10	10	10	10	10	10	10	10	10	10	10	10	10	10	10	10	10	10	10	9	9	10	10	10	10	10
75/76	10	10	10	10	10	10	10	10	10	10	10	10	10	10	10	10	10	10	10	10	10	10	10	10	10	10	10	10	10	10	9	10	10	10	10	10
63/64	10	10	10	10	10	10	10	10	10	10	10	10	10	10	10	10	10	10	10	10	10	10	10	10	10	10	10	10	10	10	10	10	10	10	10	10
51/52	10	10	10	10	10	10	10	10	10	10	10	10	10	10	10	10	10	10	10	10	10	10	10	10	10	10	10	10	10	10	10	10	10	10	10	10
37/38	10	10	10	10	10	10	10	10	10	10	10	10	10	10	10	10	10	10	10	10	10	10	10	10	10	10	10	10	10	10	10	10	10	10	10	10
25/26	10	10	10	10	10	10	10	10	10	10	10	10	10	10	10	10	10	10	10	10	10	10	10	10	10	10	10	10	10	10	10	10	10	10	10	10
11/12	10	10	10	10	10	10	10	10	10	10	10	10	10	10	10	10	10	10	10	10	10	10	10	10	10	10	10	10	10	10	10	10	10	10	10	10
1 & 2 Bravo	10	10	10	10	10	10	10	10	10	10	10	10	10	10	10	10	9	9	9	9	9	9	9	9	9	9	9	9	9	9	9	9	9	9	9	9

NOTE: This is automated data that may/may not agree with the official BAM thinking that's found on the daily slides or special visibility report slides. This data should be used as a guide only

Houston Pilots Wind Chart



Forecast Confidence



Example

Sustained wind 13 Knots
Gusts 18 Knots
Wind from the N

WS: 13
G:18
N

Time Knots	Wed 3am	Wed 4am	Wed 5am	Wed 6am	Wed 7am	Wed 8am	Wed 9am	Wed 10am	Wed 11am	Wed 12pm	Wed 1pm	Wed 2pm	Wed 3pm	Wed 4pm	Wed 5pm	Wed 6pm	Wed 7pm	Wed 8pm	Wed 9pm	Wed 10pm	Wed 11pm	Thu 12am	Thu 1am	Thu 2am	Thu 3am	Thu 4am	Thu 5am	Thu 6am	Thu 7am	Thu 8am	Thu 9am	Thu 10am	Thu 11am	Thu 12pm	Thu 1pm	Thu 2pm
610 Bridge	4	5	5	6	6	6	8	9	9	10	11	11	12	11	11	12	13	12	13	12	11	10	9	9	9	9	8	7	8	9	9	10	10	10	11	9
	10	12	11	14	16	16	18	16	14	15	16	17	19	18	18	19	19	19	19	18	15	14	14	14	13	13	13	12	12	12	14	15	15	15	16	14
	ESE	SE	ESE	ESE	ESE	SE	SE	SE	SE	SE	SE	SE	SE	SE	SE	SE	SE	SE	SE	ESE	SE	SE	SE	SE	SE	SE	SE	SE	SE	SSE	SSE	SSE	SSE	SSE	SSE	
Kinder 1	4	5	5	6	6	6	8	9	9	10	11	12	12	12	11	12	13	12	13	12	11	10	9	9	9	8	8	8	8	9	9	10	10	11	9	
	11	12	11	14	17	17	19	16	14	15	16	18	19	18	19	19	19	19	19	17	15	14	14	14	13	13	12	12	12	14	15	15	15	16	14	
	SE	SE	ESE	ESE	ESE	ESE	SE	SE	SE	SE	SE	SE	SE	SE	SE	SE	ESE	SE	ESE	SE	SE	SE	SE	SE	SE	SE	SE	SE	SE	SSE	SSE	SSE	SSE	SSE	SSE	
Greens Bayou	5	5	5	6	7	7	9	10	10	11	12	13	12	12	12	12	13	12	11	10	9	9	9	9	9	8	8	8	9	9	10	10	11	9		
	12	12	11	14	18	18	19	17	16	17	18	20	20	19	20	19	19	19	17	15	14	14	14	13	13	12	12	12	14	15	15	15	16	14		
	SE	SE	ESE	SE	ESE	ESE	SE	SE	SE	SE	SE	SE	SE	SE	SE	SE	ESE	SE	ESE	SE	SE	SE	SE	SE	SE	SE	SE	SE	SE	SSE	SSE	SSE	SSE	SSE	SSE	
Shell Crude	5	6	5	7	7	7	9	10	11	12	13	13	12	12	12	12	13	12	11	10	9	9	9	9	9	8	8	8	9	9	10	10	11	9		
	13	13	12	14	18	18	19	17	16	17	19	20	21	20	19	19	19	18	17	15	14	14	14	13	13	13	12	12	14	15	15	15	16	14		
	SE	SE	ESE	SE	ESE	ESE	SE	SE	SE	SE	SE	SE	SE	SE	SE	SE	ESE	ESE	SE	SE	SE	SE	SE	SE	SE	SE	SE	SE	SE	SSE	SSE	SSE	SSE	SSE	SSE	
Lynchburg Ferries	6	6	6	7	7	7	9	11	11	12	13	13	13	13	12	13	13	13	13	12	11	10	10	10	9	9	9	8	9	10	10	10	11	10		
	14	12	12	14	18	18	20	18	17	18	19	20	21	20	20	19	18	18	18	15	14	14	14	13	13	13	12	12	14	15	15	16	15			
	SE	SE	ESE	ESE	ESE	ESE	SE	SE	SE	SE	SE	SE	SE	SE	SE	SE	ESE	ESE	SE	SE	SE	SE	SE	SE	SE	SE	SE	SE	SE	SSE	SSE	SSE	SSE	SSE	SSE	
Exxon 3	7	7	6	7	7	7	10	11	11	12	13	13	13	12	12	14	13	13	13	12	11	10	10	10	10	9	10	10	10	11	11	10				
	14	13	13	15	17	18	20	19	18	19	19	20	21	20	20	19	18	18	18	17	15	14	14	14	13	13	13	13	14	15	15	16	15			
	SE	SE	ESE	ESE	ESE	ESE	SE	SE	SE	SE	SE	SE	SE	SE	SE	SE	ESE	ESE	SE	SE	SE	SE	SE	SE	SE	SE	SE	SE	SE	SSE	SSE	SSE	SSE	SSE	SSE	
Morgans Point	8	8	8	8	8	8	10	11	11	12	13	12	12	11	12	15	14	14	14	13	12	12	11	12	11	11	11	10	10	11	11	11	11			
	15	14	14	16	17	18	20	18	19	20	21	20	20	20	19	18	18	17	17	15	15	14	15	14	14	14	13	13	14	14	15	16	16			
	SE	ESE	ESE	ESE	ESE	ESE	SE	SE	SE	SE	SE	SE	SE	SE	SE	ESE	ESE	ESE	ESE	ESE	ESE	SE	SE	SE	SE	SE	SE	SE	SE	SSE	SSE	SSE	SSE	SSE	SSE	
75/76	9	10	10	10	10	10	11	11	9	11	12	12	11	10	11	16	15	15	14	14	14	14	14	14	14	13	13	12	12	12	12	11				
	15	15	16	16	17	18	20	18	19	20	20	20	20	20	19	18	18	17	17	16	16	16	16	16	15	15	15	14	14	15	15	16	16			
	ESE	ESE	ESE	ESE	ESE	ESE	SE	SE	SE	SE	SE	SE	SE	SE	SE	ESE	ESE	ESE	ESE	ESE	ESE	SE	SE	SE	SE	SE	SE	SE	SE	SSE	SSE	SSE	SSE	SSE	SSE	
63/64	9	9	10	10	10	11	10	11	9	10	11	12	12	11	11	16	15	15	15	15	14	14	14	14	14	13	13	12	12	13	12	11				
	15	15	16	15	16	17	19	20	18	18	18	20	20	20	18	18	17	17	16	16	16	16	16	16	15	15	14	14	14	14	15	16	16			
	ESE	ESE	ESE	ESE	ESE	ESE	SE	SE	SE	SE	SE	SE	SE	SE	SE	ESE	ESE	ESE	ESE	ESE	ESE	SE	SE	SE	SE	SE	SE	SE	SE	SSE	SSE	SSE	SSE	SSE	SSE	
51/52	9	9	10	10	10	11	10	12	9	11	10	11	12	11	11	15	15	14	14	14	13	13	13	13	13	12	12	12	12	11	11					
	15	15	16	15	16	17	18	20	17	18	18	19	20	20	18	17	16	16	16	15	15	15	15	14	14	14	13	13	14	14	15	16	16			
	ESE	ESE	ESE	ESE	ESE	ESE	SE	SE	SE	SE	SE	SE	SE	SE	SE	ESE	ESE	ESE	ESE	ESE	ESE	SE	SE	SE	SE	SE	SE	SE	SE	SSE	SSE	SSE	SSE	SSE	SSE	
37/38	9	9	10	9	9	10	10	12	10	11	10	11	11	11	14	14	14	13	13	13	13	13	13	12	12	12	11	11	11	11	11					
	14	15	16	16	16	17	18	20	17	17	18	19	19	19	20	17	16	16	15	15	14	14	13	13	13	12	12	12	12	12	11	11				
	ESE	ESE	ESE	ESE	ESE	ESE	SE	SE	SE	SE	SE	SE	SE	SE	SE	ESE	ESE	ESE	ESE	ESE	ESE	SE	SE	SE	SE	SE	SE	SE	SE	SSE	SSE	SSE	SSE	SSE	SSE	
25/26	9	9	10	9	9	9	10	12	10	10	10	10	11	12	13	12	12	11	12	12	11	11	11	11	11	11	10	10	10	10	10					
	15	16	17	17	16	16	17	20	17	17	17	19	18	19	19	16	15	16	15	16	15	14	14	14	13	13	12	12	13	14	14	14	13	14		
	ESE	ESE	ESE	ESE	ESE	ESE	SE	SE	SE	SE	SE	SE	SE	SE	SE	ESE	ESE	ESE	ESE	ESE	ESE	SE	SE	SE	SE	SE	SE	SE	SE	SSE	SSE	SSE	SSE	SSE	SSE	
11/12	10	11	11	11	11	10	9	11	11	9	10	10	11	11	11	13	12	13	11	12	12	12	12	12	11	11	11	10	10	10	10					
	17	18	19	18	18	17	17	19	18	17	17	18	18	18	19	16	15	16	15	16	15	15	14	14	14	13	12	12	13	14	14	14	13	13		
	SE	ESE	ESE	ESE	ESE	ESE	SE	SE	SE	SE	SE	SE	SE	SE	SE	ESE	ESE	ESE	ESE	ESE	ESE	SE	SE	SE	SE	SE	SE	SE	SE	SSE	SSE	SSE	SSE	SSE	SSE	
1 & 2 Bravo	11	13	13	12	13	11	11	11	13	8	10	11	11	11	12	12	14	14	15	14	15	14	14	14	14	14	14	13	13	13	11	10				
	19	20	20	19	19	17	17	18	16	17	18	16	17	18	19	16	16	17	16	16	16	16	15	15	14	14	14	14	14	14	14	13	13			
	SE	SE	ESE	ESE	ESE	ESE	SE	SE	SE	SE	SE	SE	SE	SE	SE	E	ESE	ESE	ESE	ESE	ESE	SE	SE	SE	SE	SE	SE	SE	SE	SSE	SSE	SSE	SSE	SSE	SSE	

NOTE: This is automated data that may/may not agree with the official BAM thinking that's found on the daily ssidees.
This data should be used as a guide only

Forecast Discussion

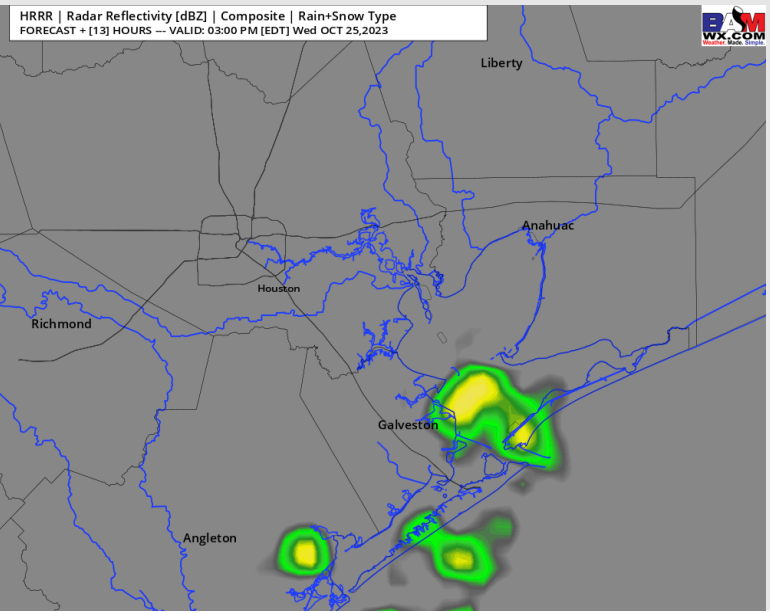
Precip: Will need to watch for patchy, light drizzle across all stations starting around 6 AM. Chances remain low at 20%. Towards 9 AM coverage will begin to become more isolated to scattered (30%) with the best window for showers and storms in the 1 - 6 PM window (30 - 40%). Expecting mostly dry time there after with only isolated chances of a brief passing shower through midnight.

Wind: Winds will be out of the SE for the entire day Wednesday. Winds **N of Morgan's Point** will be at 5 - 10 kts through 10 AM before increasing to 10 - 15 kts the rest of the day. Winds **S of Morgan's Point** will start at 10-15 kts before increasing to 12-16kts by 4 PM. After 7 PM, need to watch for winds to continue to increase a bit to 13 - 17 kts (windiest towards the Boarding Station). **Along with wind gusts of 22 - 25 kts (especially from 2 PM - 10 PM) wave heights of 3-5 feet will also be possible for the boarding station, especially from 7 PM today to 7 AM THU.** Wind gusts of 24-28 kts near the Boarding Station possible after 4 PM.

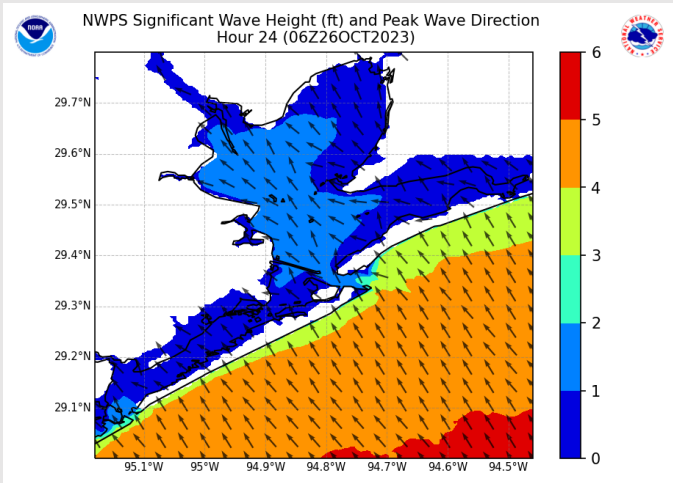
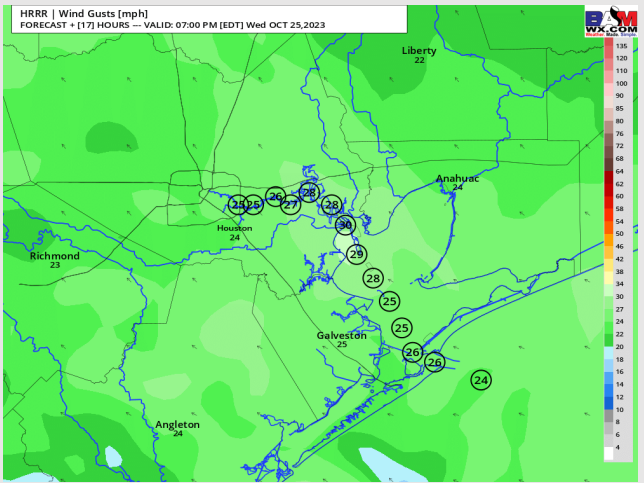
High Temps: **N of Morgan's Point:** Mid 80's F. **S of Morgan's Point:** High 70's F to low 80s F.

Visibility: Not anticipating any visibility issues currently.

Precip Image: 2 PM CT



**Wind Gusts:
6 PM CT**



**Max Wave Heights
1 AM CT THU**

Houston Pilots: Thu. 10/26/2023



Forecast Discussion

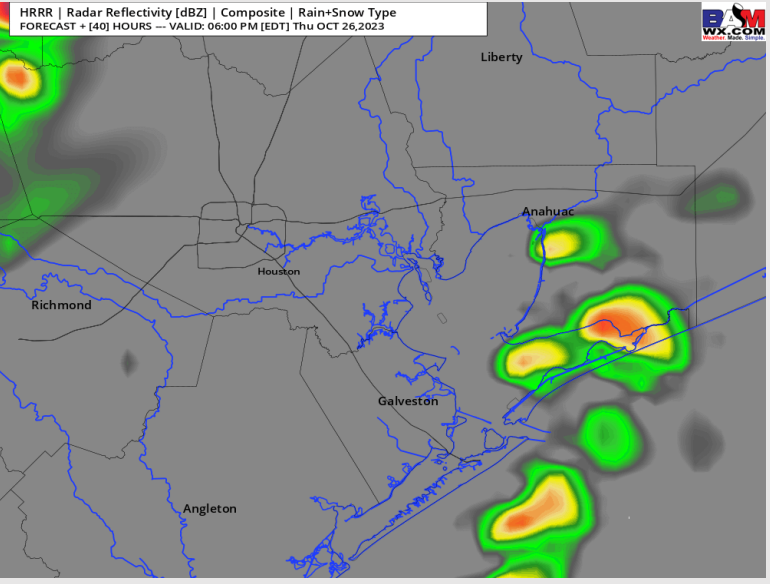
Precip: Main risk window will be starting around 6 AM for spotty showers/drizzle (20%) with chances picking up towards 12 PM for isolated to scattered showers/ storms (25%). Confidence is slightly lower than normal into tomorrow afternoon regarding coverage. However, scattered storms from 3 PM through midnight will be possible (30%).

Wind: Winds out of the SSE / SE throughout the day Thursday. For Stations N of Morgan's Point, winds will be at 5-10 kts through 10 AM before increasing to 10 - 15 kts. For stations S of Morgan's Point winds will be 10-15 knots for much of the day. Gusts to 17 mph will be possible in the afternoon, especially for areas closer to the Boarding Station.

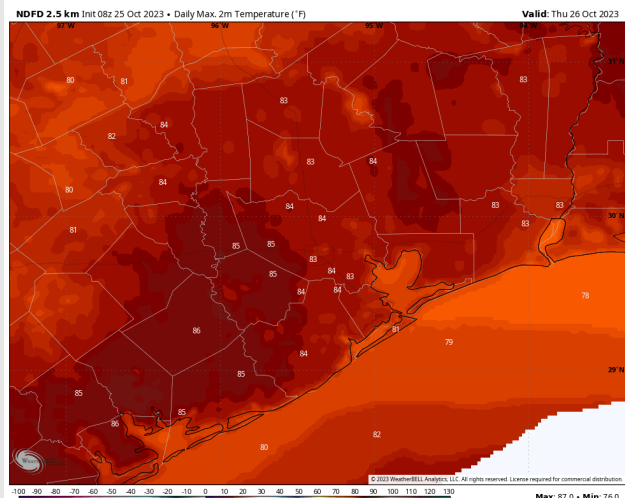
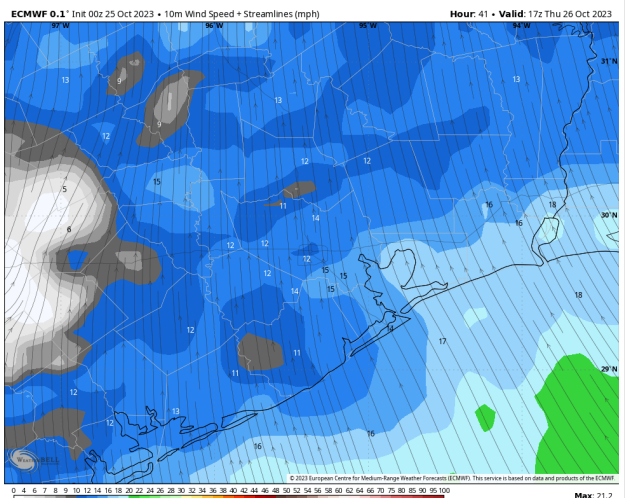
High Temps: N of Morgan's Point: Lower to Mid 80's F. S of Morgan's Point: Upper 70s to near 80 F.

Visibility: Not anticipating any visibility issues currently.

Precip Image: 5 PM CT



Wind Speed:
12 PM CT



High Temps
Thursday

Houston Pilots: Fri. 10/27/2023

Forecast Discussion

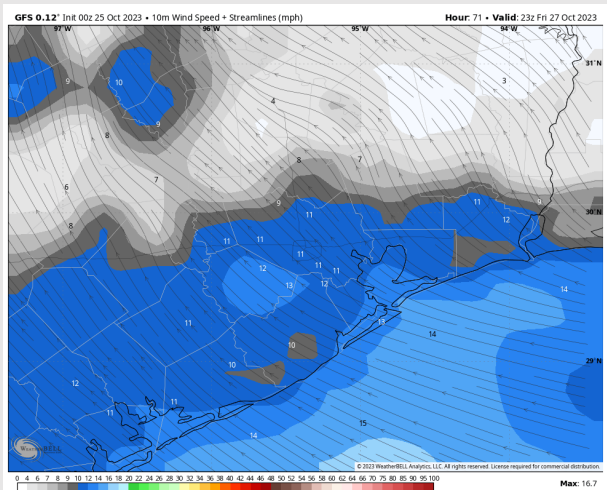
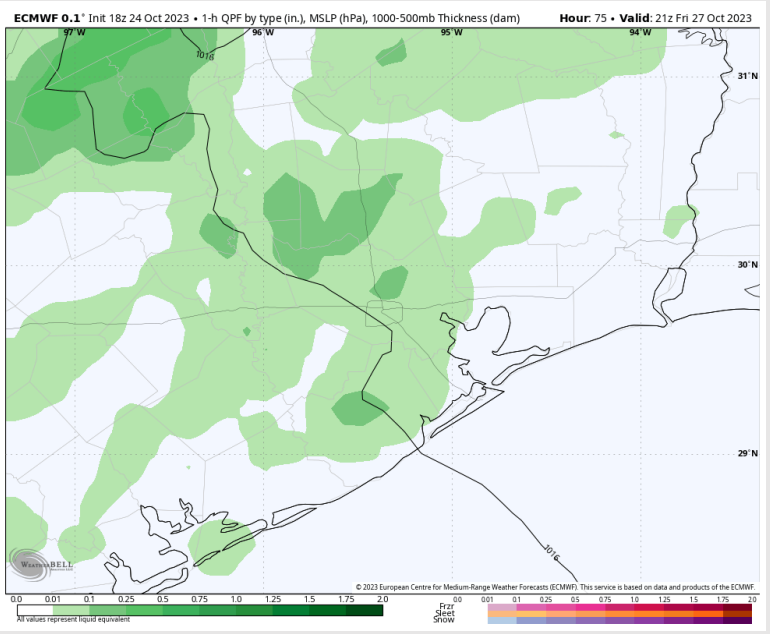
Precip: Any activity lingering from THU night should be winding down getting into FRI AM. We will need to watch where a boundary sets up into FRI afternoon. Current indications show it sets up just west. However, with this in proximity, will keep chances for isolated to scattered storms in, especially from 12 PM – 7 PM (20%).

Wind: Winds will remain out of the SE through remainder of the day today. Winds N of Morgan's Point: Winds will remain at 3 – 8 kts throughout the day Friday. S of Morgan's Point will be at 8 - 13 kts through 7 AM before decreasing slightly to 4 – 9 kts until 7 PM. After 7 PM winds will increase again up to 9 – 14 kts for the remainder of the evening.

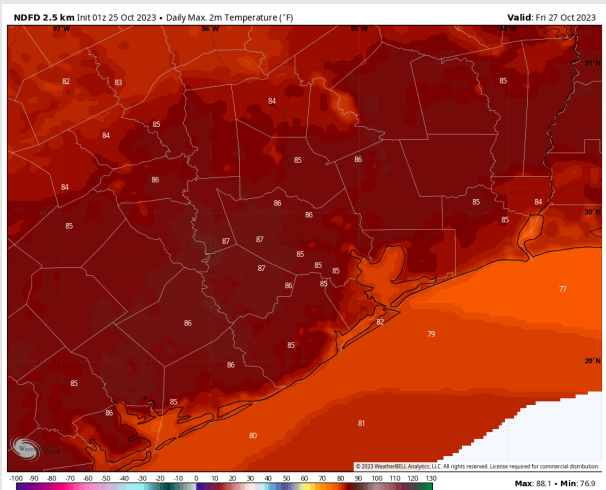
High Temps: N of Morgan's Point: Mid 80's F. S of Morgan's Point: Mid to Upper 70s F

Visibility: No visibility concerns for FRI.

Precip Image: 4 PM CT



Wind Speed
10 PM CT

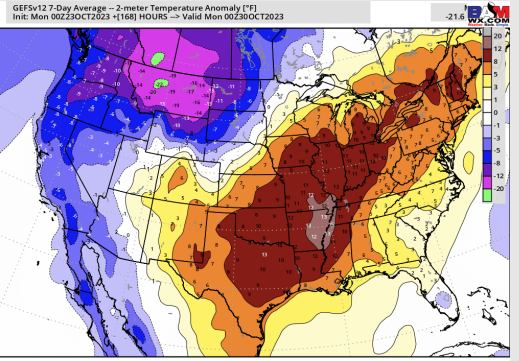


High Temps
Friday

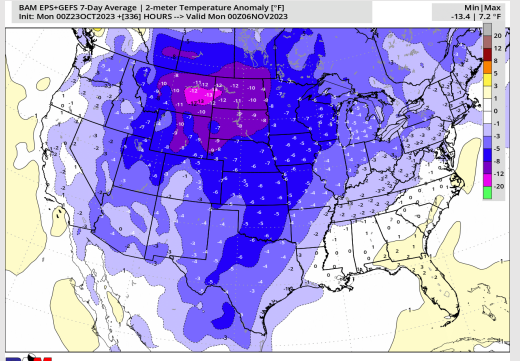
Houston Pilots: 10/25/23



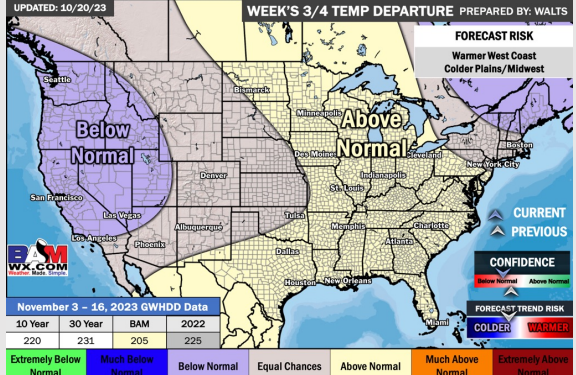
Next 7 Day Temperature Departure



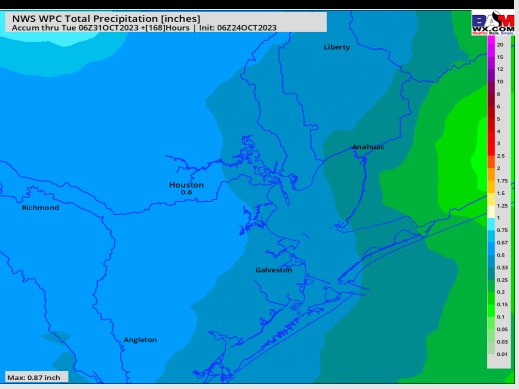
8-14 Day Temperature Departure



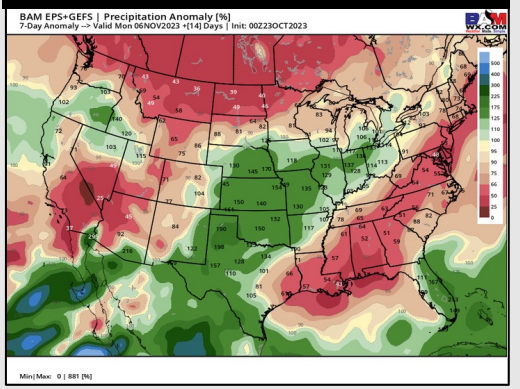
15-30 Day Temperature Departure



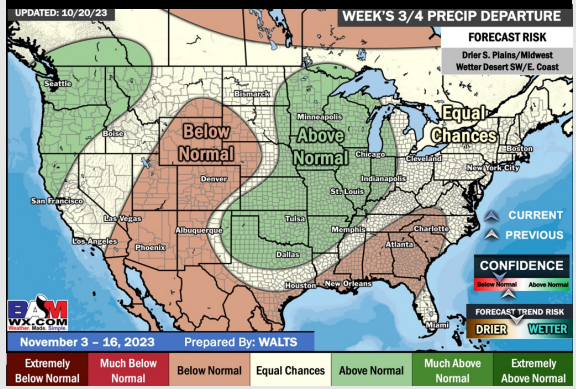
Next 7 Day Total Precipitation



8-14 Day % of Average Precip.



15-30 Day % of Average Precip.



- Outside of the chances mentioned in the slides above, we will also need to watch SUN/ MON for a cold front to pass, bringing elevated chances for rain. Until that front passes, temperatures are expected to remain above normal.
- Slightly below normal rainfall and below normal temperatures are expected into the week 2 timeframe.
- Above normal temperatures and below normal chances for precipitation are favored in the weeks 3/4 timeframe.