

Houston Pilots Forecast Package



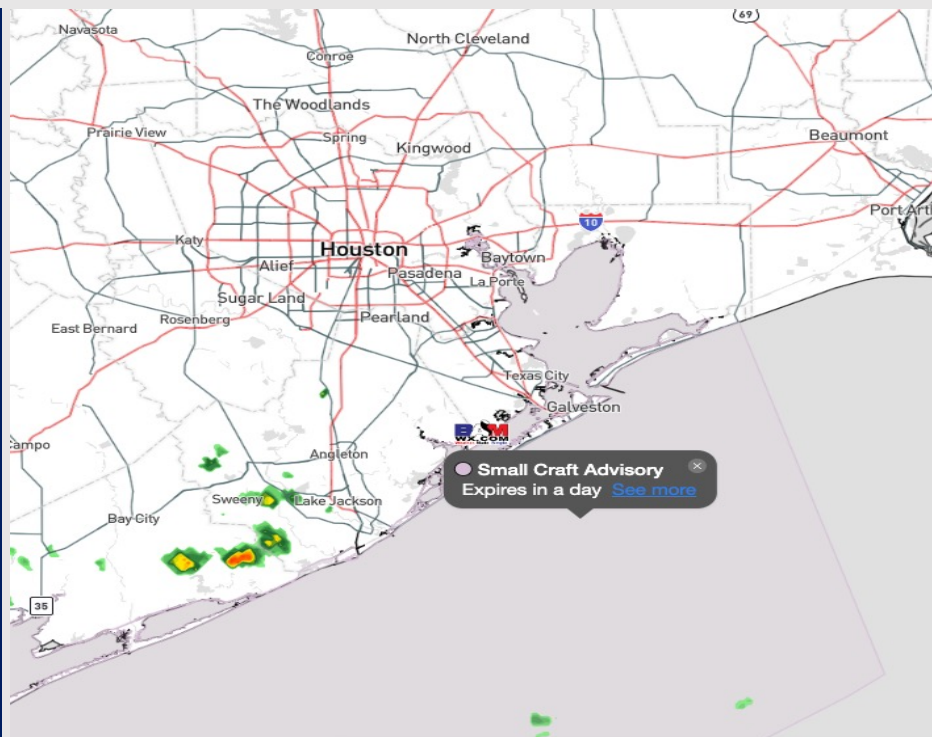
Updated: 2:50 PM CT

Friday, October 13, 2023

Forecaster: Jonathan Kipper

Weather Headlines

- Dry conditions favored after sunrise on SAT with the passing of a cold front from the NW.
- Gusts of 30+ kts will be possible Saturday due to passage of a front, with cooler temperatures to follow.
- Not favoring any visibility concerns for the week at this time.



Radar/NWS Alerts: 2:45 PM CT



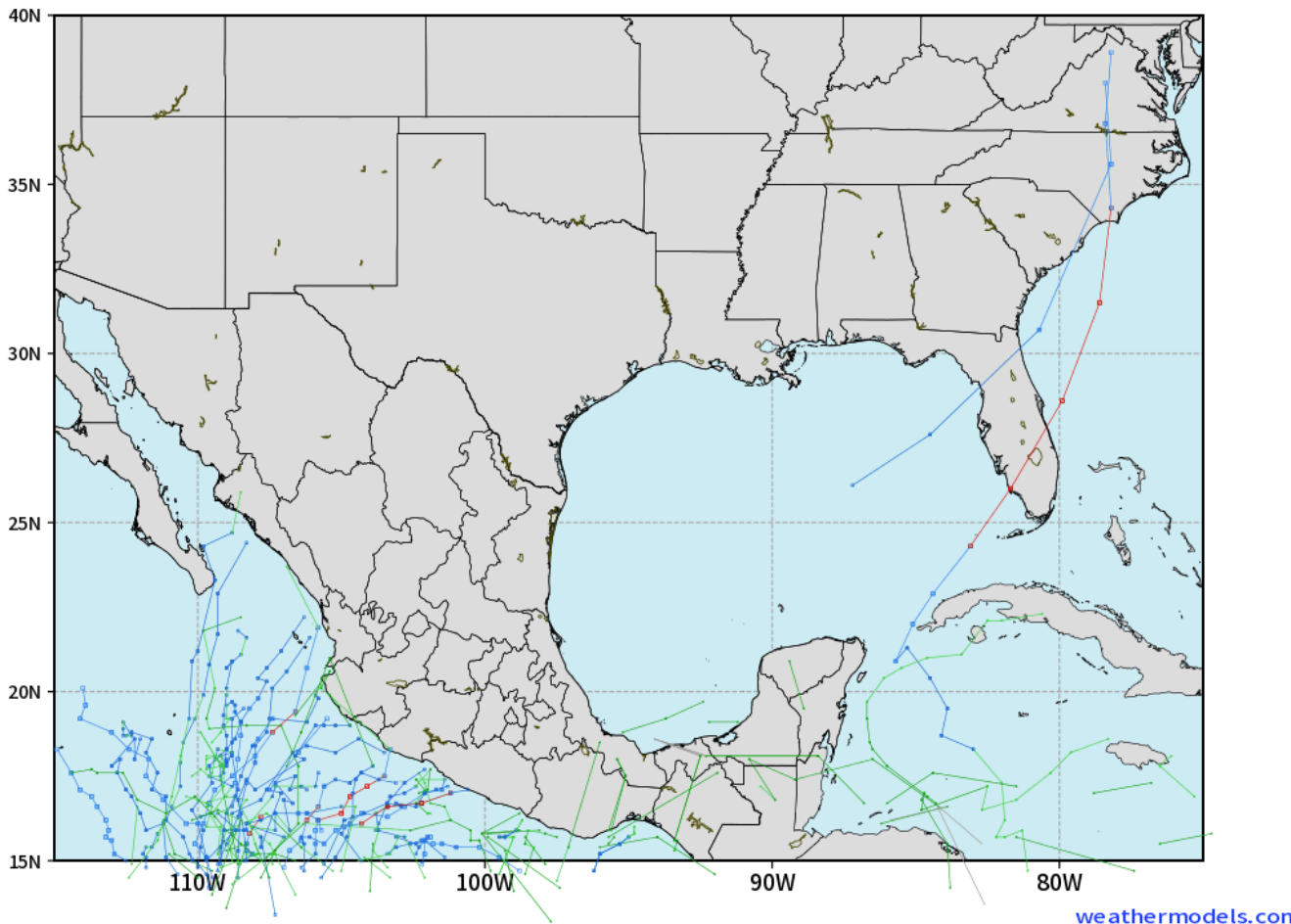
As always, please do not hesitate to reach out to us with any forecast questions via the chat option on the Weather Porthole or our on-call number, **(317)-560-8122** press 1 for forecast questions.

Houston Pilots Tropical Update

European Model Next 10 Days Tropical Tracks

ECMWF GULF EPS Cyclone Locations --> Next [10-days]
INIT: 00Z13OCT2023 --> UNTIL 00Z23OCT2023

o-o ENSEMBLE MEAN
o-o 1000 - 1010 hPa
o-o 980 - 999 hPa
o-o 960 - 979 hPa
o-o 950 - 959 hPa
o-o < 950 hPa



**Tropical
Development in
the Gulf of Mexico
is not favored in
the next 7-10 days.**

Houston Pilots Visibility Chart (miles)



Time	Fri 2pm	Fri 3pm	Fri 4pm	Fri 5pm	Fri 6pm	Fri 7pm	Fri 8pm	Fri 9pm	Fri 10pm	Fri 11pm	Sat 12am	Sat 1am	Sat 2am	Sat 3am	Sat 4am	Sat 5am	Sat 6am	Sat 7am	Sat 8am	Sat 9am	Sat 10am	Sat 11am	Sat 12pm	Sat 1pm	Sat 2pm	Sat 3pm	Sat 4pm	Sat 5pm	Sat 6pm	Sat 7pm	Sat 8pm	Sat 9pm	Sat 10pm	Sat 11pm	Sun 12am	Sun 1am
610 Bridge	10	10	10	10	10	10	10	10	10	10	10	10	10	10	10	10	10	10	10	10	10	10	10	10	10	10	10	10	10	10	10	10	10	10	10	10
Kinder 1	10	10	10	10	10	10	10	10	10	10	10	10	10	10	10	10	10	10	10	10	10	10	10	10	10	10	10	10	10	10	10	10	10	10	10	10
Greens Bayou	10	10	10	10	10	10	10	10	10	10	10	10	10	10	10	10	10	10	10	10	10	10	10	10	10	10	10	10	10	10	10	10	10	10	10	10
Shell Crude	10	10	10	10	10	10	10	10	10	10	10	10	10	10	10	10	10	10	10	10	10	10	10	10	10	10	10	10	10	10	10	10	10	10	10	10
Lynchburg Ferries	10	10	10	10	10	10	10	10	10	10	10	10	10	10	10	10	10	10	10	10	10	10	10	10	10	10	10	10	10	10	10	10	10	10	10	10
Exxon 3	10	10	10	10	10	10	10	10	10	10	10	10	10	10	10	10	10	10	10	10	10	10	10	10	10	10	10	10	10	10	10	10	10	10	10	10
Morgans Point	10	10	10	10	10	10	10	10	10	10	10	10	10	10	10	10	10	10	10	10	10	10	10	10	10	10	10	10	10	10	10	10	10	10	10	10
75/76	10	10	10	10	10	10	10	10	10	10	10	10	10	10	10	10	10	10	10	10	10	10	10	10	10	10	10	10	10	10	10	10	10	10	10	10
63/64	10	10	10	10	10	10	10	10	10	10	10	10	10	10	10	10	10	10	10	10	10	10	10	10	10	10	10	10	10	10	10	10	10	10	10	10
51/52	10	10	10	10	10	10	10	10	10	10	10	10	10	10	10	10	10	10	10	10	10	10	10	10	10	10	10	10	10	10	10	10	10	10	10	10
37/38	10	10	10	10	10	10	10	10	10	10	10	10	10	10	10	10	10	10	10	10	10	10	10	10	10	10	10	10	10	10	10	10	10	10	10	10
25/26	10	10	10	10	10	10	10	10	10	10	10	10	10	10	10	10	10	10	10	10	10	10	10	10	10	10	10	10	10	10	10	10	10	10	10	10
11/12	10	10	10	10	10	10	10	10	10	10	10	10	10	10	10	10	10	10	10	10	10	10	10	10	10	10	10	10	10	10	10	10	10	10	10	10
1 & 2 Bravo	10	10	10	10	10	10	10	10	10	10	10	10	10	10	10	10	10	10	10	10	10	10	10	10	10	10	10	10	10	10	10	10	10	10	10	10

NOTE: This is automated data that may/may not agree with the official BAM thinking that’s found on the daily slides or special visibility report slides. This data should be used as a guide only

Houston Pilots Wind Chart



Forecast Confidence



Example

Sustained wind 13 Knots
Gusts 18 Knots
Wind from the N

WS: 13
G:18
N

Time Knots	Fri 2pm	Fri 3pm	Fri 4pm	Fri 5pm	Fri 6pm	Fri 7pm	Fri 8pm	Fri 9pm	Fri 10pm	Fri 11pm	Sat 12am	Sat 1am	Sat 2am	Sat 3am	Sat 4am	Sat 5am	Sat 6am	Sat 7am	Sat 8am	Sat 9am	Sat 10am	Sat 11am	Sat 12pm	Sat 1pm	Sat 2pm	Sat 3pm	Sat 4pm	Sat 5pm	Sat 6pm	Sat 7pm	Sat 8pm	Sat 9pm	Sat 10pm	Sat 11pm	Sun 12am	Sun 1am
610 Bridge	1	2	3	3	5	4	4	3	3	5	4	5	6	6	6	11	11	10	11	11	11	11	11	11	11	11	11	10	9	8	8	8	7	8		
	5	5	6	6	7	7	9	8	9	10	14	16	18	18	17	16	16	15	16	16	16	17	17	16	17	16	16	17	16	14	13	13	12	12	12	
	ESE	ESE	SSE	SSE	ESE	SE	SSE	S	SSW	WNW	NE	N	N	ESE	SW	E	SE	SW	N	N	N	N	NNW	NNW	NNW	NNW	NNW	NNW	NNW	NNW	NNW	NNW	NNW	NNW	NNW	
Kinder 1	2	2	3	4	5	4	4	3	3	5	4	5	5	6	5	11	11	10	10	11	11	11	11	11	11	11	11	10	9	8	8	8	7	7		
	5	5	6	6	7	7	9	8	9	10	14	15	17	16	15	16	16	15	16	16	16	17	17	16	17	16	16	17	16	14	13	12	12	11	11	
	ESE	ESE	SE	SE	SE	SE	SSE	S	SSW	NW	ENE	N	N	SSW	S	S	SW	NW	N	N	N	N	NNW	NNW	NNW	NNW	NNW	NNW	NNW	NNW	NNW	NNW	NNW	NNW	NNW	
Greens Bayou	3	3	4	5	5	4	3	3	3	5	5	5	5	5	5	11	11	10	10	10	10	11	11	10	11	11	10	9	8	8	8	7	7			
	6	6	7	7	7	7	9	9	9	9	15	14	16	13	13	17	17	15	16	17	17	16	17	17	16	16	16	15	14	13	12	12	11	11		
	ESE	ESE	ESE	SE	SE	SSE	SE	S	SSW	NW	SE	N	N	NNW	NE	NNW	N	N	N	N	N	N	N	NNW	NNW	NNW	NNW	NNW	NNW	NNW	NNW	NNW	NNW	NNW	NNW	
Shell Crude	4	4	5	5	5	4	4	3	3	3	6	5	6	5	5	11	11	10	10	10	10	11	11	11	11	11	10	11	10	9	9	8	8	7	7	
	6	7	7	7	7	8	9	9	8	7	16	14	16	14	14	17	17	16	16	16	16	16	16	16	16	16	16	16	15	14	13	12	12	11	10	
	ESE	ESE	ESE	SE	SE	SSE	SSE	S	SSW	NW	WSW	NNW	N	N	ENE	NNW	N	N	N	N	N	N	N	NNW	NNW	NNW	NNW	NNW	NNW	NNW	NNW	NNW	NNW	NNW	NNW	
Lynchburg Ferries	4	4	5	5	5	4	4	3	3	4	6	5	6	5	6	12	11	10	10	11	11	11	11	11	11	11	12	11	10	9	9	8	7	7		
	6	6	7	7	7	8	10	9	8	6	16	13	16	13	14	17	16	15	15	16	16	16	16	16	16	16	16	16	15	14	13	12	12	11	10	
	SE	SE	SE	SE	SE	SSE	SSE	S	S	NNW	NNW	N	WSW	S	NNW	WNW	NW	NNW	N	N	N	N	NNW	NNW	NNW	NNW	NNW	NNW	NNW	NNW	NNW	NNW	NNW	NNW	NNW	
Exxon 3	5	5	5	6	6	5	5	3	3	3	5	6	6	6	6	12	12	11	11	11	12	11	11	11	11	12	12	12	10	10	9	9	8	8		
	6	6	7	7	8	10	10	9	7	5	13	14	18	17	17	17	16	15	16	16	16	16	16	16	16	16	16	16	15	13	13	13	11	11		
	SE	SE	SE	SSE	SSE	SSE	SSE	S	NW	NNW	NNW	NNW	WSW	NNW	W	W	W	WNW	N	N	N	N	NNW	NNW	NNW	NNW	NNW	NNW	NNW	NNW	NNW	NNW	NNW	NNW	NNW	
Morgans Point	5	6	7	7	7	7	6	4	3	2	5	7	7	9	8	14	14	13	13	13	13	12	12	12	12	13	13	14	13	12	11	11	11	10	10	
	7	7	8	9	9	10	10	9	7	4	10	15	18	20	20	18	18	17	17	17	17	16	16	17	17	18	17	18	17	16	14	14	13	13		
	SE	SE	SSE	SSE	SSE	SSE	SSE	S	SSW	WNW	NW	NNW	NNW	NNW	WNW	S	S	W	N	N	N	N	NNW	NNW	NNW	NNW	NNW	NNW	NNW	NNW	NNW	NNW	NNW	NNW	NNW	
75/76	5	7	8	8	8	8	7	6	3	2	6	10	11	14	14	17	17	16	16	16	16	14	14	13	14	14	15	16	16	15	14	14	13	14	14	
	8	9	10	10	10	11	10	9	6	5	8	16	17	21	22	20	20	19	19	18	18	17	17	17	18	18	18	19	18	17	16	16	16	16		
	SE	SE	SE	SSE	SSE	SSE	SSE	S	SSW	SW	NW	NNW	NW	N	E	NE	ENE	NE	E	W	N	N	N	NNW	NNW	NNW	NNW	NNW	NNW	NNW	NNW	NNW	NNW	NNW	NNW	
63/64	5	7	8	8	8	7	6	6	3	2	7	11	14	16	17	19	20	20	19	18	18	16	15	14	15	15	16	17	16	16	16	16	16	16		
	8	9	11	11	10	10	9	9	7	5	9	14	18	20	23	21	22	22	21	20	20	18	17	17	17	18	18	18	18	18	17	17	17	18		
	SE	SE	SE	SSE	SSE	SSE	SSE	S	SSW	SSW	NW	NNW	NNW	N	N	N	N	N	NE	NW	N	N	N	N	NNW	NNW	NNW	NNW	NNW	NNW	NNW	NNW	NNW	NNW		
51/52	5	6	8	8	7	7	6	6	4	2	7	9	14	16	18	20	20	20	19	18	18	16	16	15	15	15	14	15	16	16	16	16	16	16		
	8	9	10	10	9	9	9	9	7	5	8	10	18	20	24	22	23	22	22	20	20	18	17	17	18	18	18	17	18	18	18	18	18	18		
	ESE	SE	SE	SSE	SSE	SSE	SSE	S	S	SSW	NW	NW	NNW	S	N	N	N	N	N	N	N	NNW	N	N	NNW	NNW	NNW	NNW	NNW	NNW	NNW	NNW	NNW	NNW		
37/38	6	7	8	8	7	6	6	6	4	2	4	7	13	17	19	19	20	20	20	19	18	17	16	15	15	15	15	16	16	16	16	16	17	16		
	8	9	9	9	8	9	9	8	7	5	9	17	20	24	22	23	23	22	21	20	18	18	17	18	17	17	17	18	18	17	18	18	18	18		
	ESE	SE	SE	SSE	SSE	SSE	SSE	SSE	S	SSW	WNW	NW	NNW	NNE	N	N	N	N	N	N	W	N	N	N	NNW	NNW	NNW	NNW	NNW	NNW	NNW	NNW	NNW	NNW		
25/26	7	7	7	7	6	6	5	5	4	2	3	6	12	16	19	18	18	18	18	18	17	16	15	15	14	14	14	14	14	15	14	15	15	15		
	9	8	9	9	7	8	8	8	7	5	4	8	16	20	24	21	22	23	22	21	20	18	17	17	17	17	17	16	17	16	17	17	17	17		
	ESE	ESE	SE	SE	SE	SSE	SSE	SSE	S	SSW	WNW	NW	NNW	NE	N	N	N	N	N	N	SSW	N	N	N	NNW	NNW	NNW	NNW	NNW	NNW	NNW	NNW	NNW	NNW		
11/12	8	7	7	7	6	6	6	5	2	3	6	9	14	17	17	18	18	18	18	17	15	15	14	14	14	14	14	14	14	15	14	15	15	15		
	9	8	8	8	7	7	8	7	5	4	8	13	20	24	20	21	22	22	21	20	18	17	17	17	17	16	16	17	16	17	16	17	16	17		
	ESE	ESE	SE	SE	SE	SSE	SSE	SSE	SSE	SSW	W	NW	NNW	SSW	N	N	N	N	N	N	E	N	N	N	NNW	NNW	NNW	NNW	NNW	NNW	NNW	NNW	NNW	NNW		
1 & 2 Bravo	9	8	8	8	7	6	7	6	6	3	3	7	10	15	20	20	22	22	22	21	20	17	17	16	15	15	16	16	17	17	18	18	18	18		
	9	8	8	9	7	7	8	7	6	4	4	7	12	19	23	22	24	24	23	22	22	19	18	17	17	17	18	19	19	19	19	19	20	20		
	ESE	ESE	SE	SE	SE	SE	SSE	SSE	SSE	S	SSW	NW	NNW	NW	NE	N	N	N	N	N	N	N	N	N	NNW	NNW	NNW	NNW	NNW	NNW	NNW	NNW	NNW	NNW		

NOTE: This is automated data that may/may not agree with the official BAM thinking that's found on the daily slides.
This data should be used as a guide only

Houston Pilots: Fri. 10/13/2023

Forecast Discussion

Precip: Favoring dry conditions the rest of the day, however, cannot rule out a ~10% chance starting at 7 PM at a hit/miss shower ahead of cold front SAT AM. Most stations will remain dry this evening.

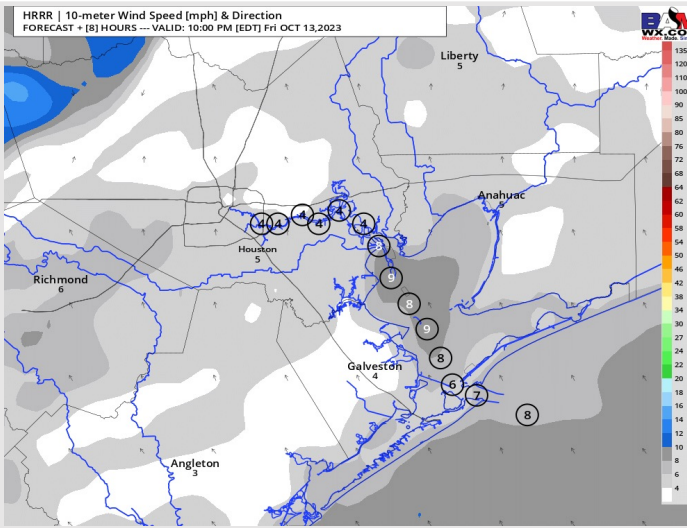
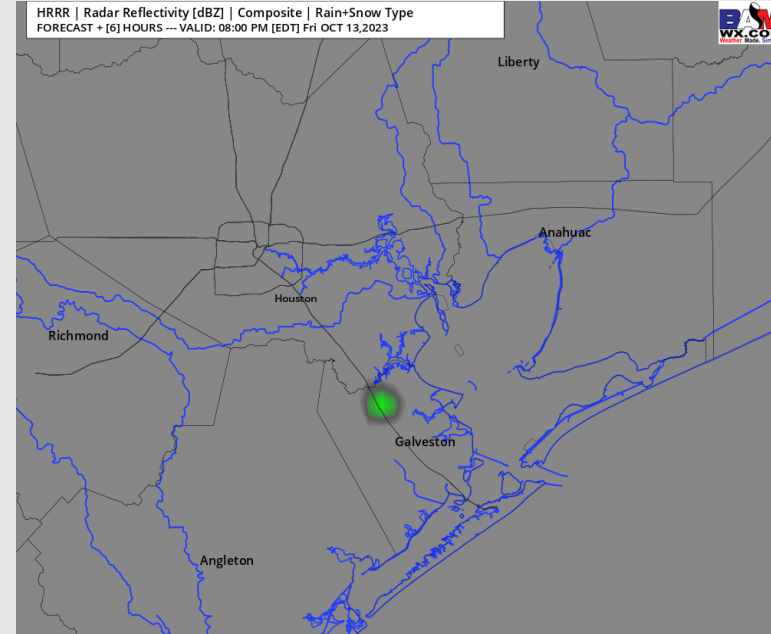
Wind: Winds will be out of the E/SE the remainder of the day. Sustained winds for locations **S of Morgan's Point** will be at 6-11 kts the rest of the day, while locations **N of Morgan's Point** winds will remain at 3-8kts.

Low Temps: **N of Morgan's Point:** Mid 60s F. **S of Morgan's Point:** Near 70/Low 70s F.

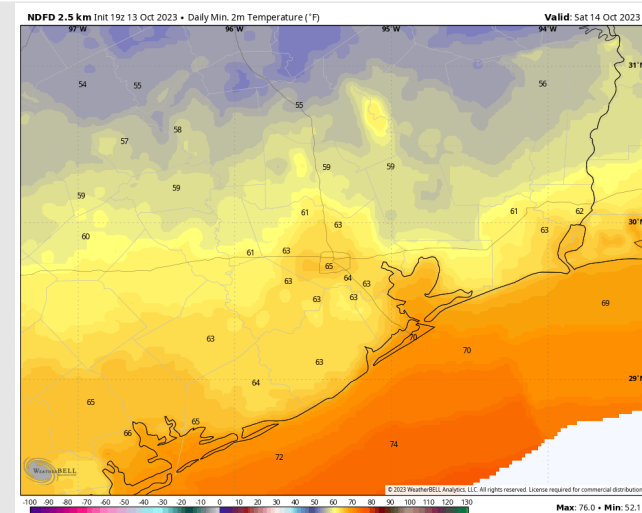
Visibility: Not anticipating any visibility issues currently.

Precip Image: 7 PM CT

HRRR | Radar Reflectivity [dBZ] | Composite | Rain+Snow Type
FORECAST + [6] HOURS — VALID: 08:00 PM [EDT] Fri OCT 13, 2023



Wind Speed:
9 PM CT



Low Temps
Saturday

Houston Pilots: Sat. 10/14/2023

Forecast Discussion

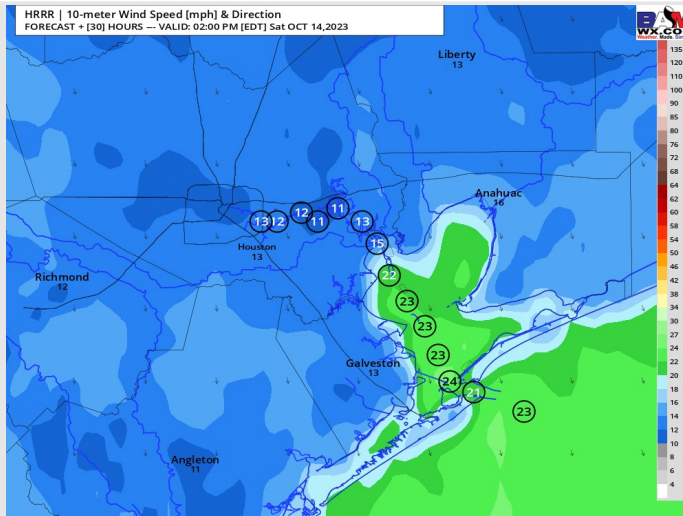
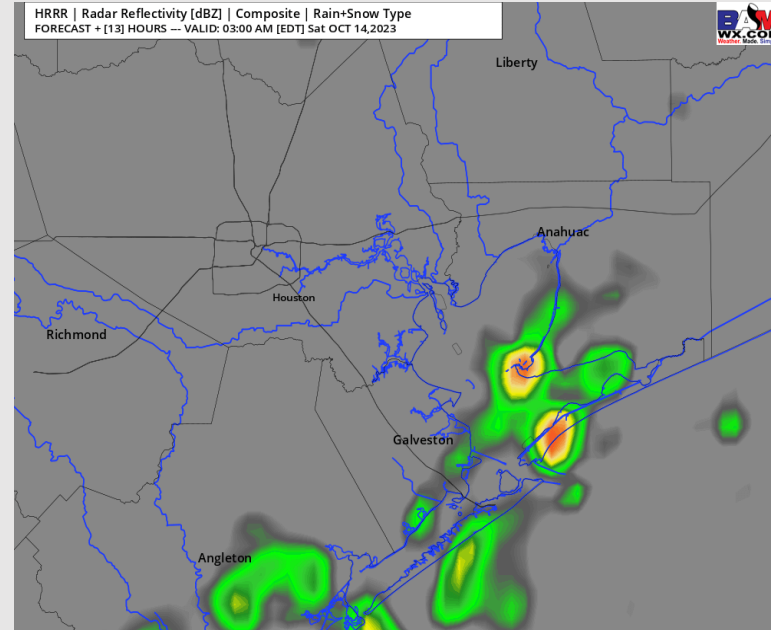
Precip: Anticipating a 40-50% chance for a broken line of showers and a couple isolated storms between 12 AM – 6 AM as a weak front passes over from the NW. Then favoring dry conditions throughout the rest of the day.

Wind: Winds will be out of the N / NNW throughout the day with the passing of a front from the NW. For Stations **N of Morgan's Point**, winds will be at 8-13 kts through 6 PM, decreasing to 5-10 kts after that time for the remainder of the evening. Winds **S of Morgan's Point** will sit around 20-25 kts throughout the day. **Wind gusts of 30-33 kts will be possible (highest after noon)** for the entire day **S of Morgan's Point** and until 9 PM for stations **N of Morgan's Point**.

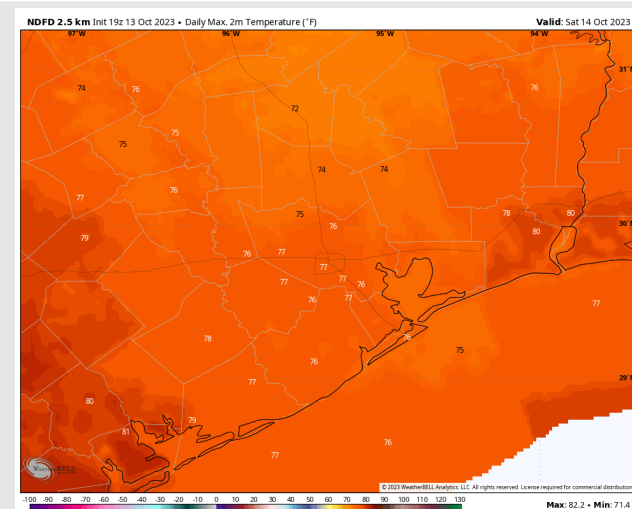
High Temps: **N of Morgan's Point:** Mid/Upper 70's F. **S of Morgan's Point:** Mid 70's F.

Visibility: Not anticipating any visibility concerns at this time.

Precip Image: 2 AM CT



Wind Speeds:
1 PM CT



High Temps
Saturday

Houston Pilots: Sun. 10/15/2023

Forecast Discussion

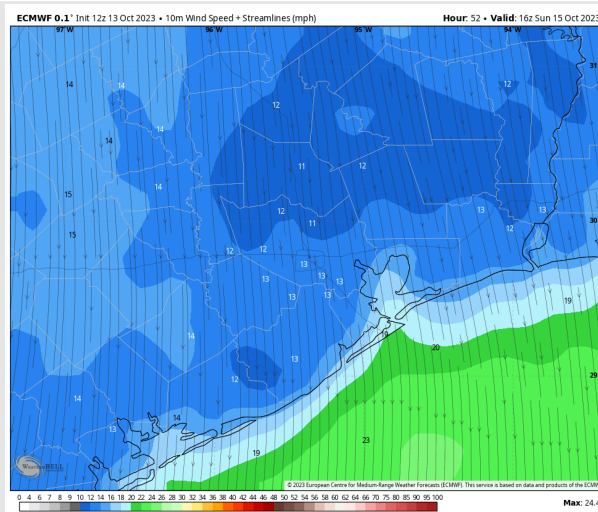
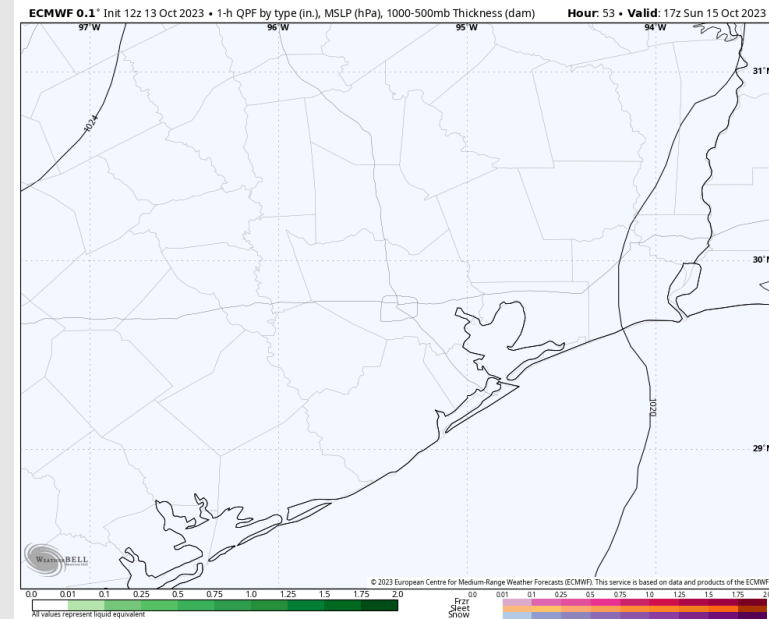
Precip: Favoring dry conditions for all locations for Sunday.

Wind: Winds will be out of the N/NNW for all of Sunday. For Stations **N of Morgan's Point**, winds will be at 5-10 kts throughout the day with a slight increase to 8-13 kts between 11 AM to 7 PM. Winds **S of Morgan's Point** will be 16 – 21 kts throughout the day Sunday. **Wind gusts of 27-30 kts will be possible near the Boarding Station throughout the day Sunday.**

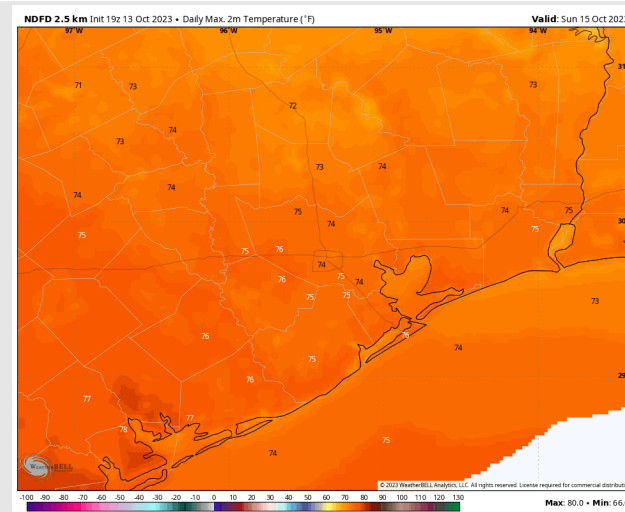
Low Temps: **N of Morgan's Point:** Mid 70s. **S of Morgan's Point:** Mid 70's.

Visibility: Not anticipating any visibility issues at this time.

Precip Image: 12 PM CT



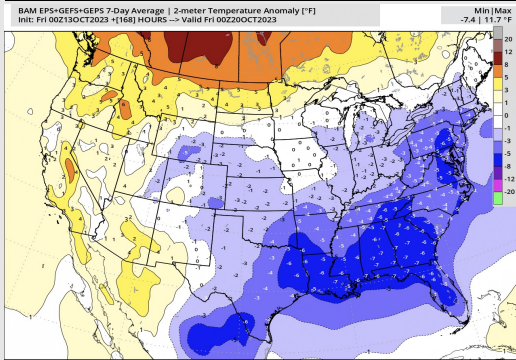
Wind Speed:
11 AM CT



High Temps
Sunday

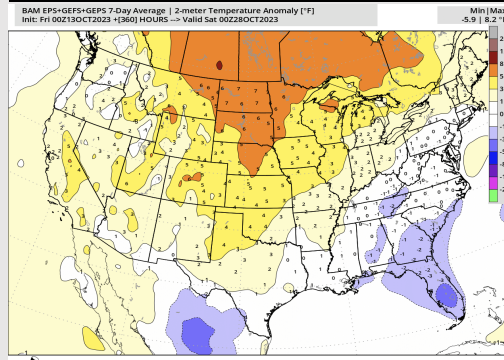
Houston Pilots: 10/13/23

Next 7 Day Temperature Departure



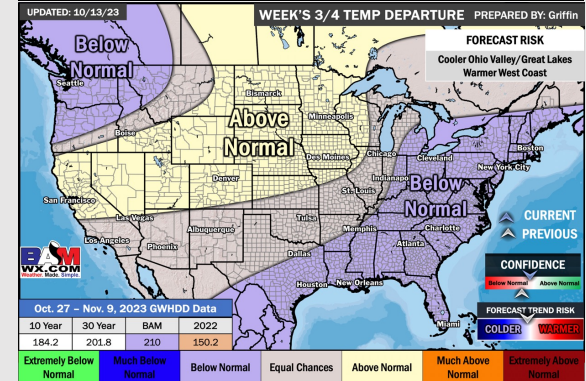
This service is based on data European Centre for Medium-range Weather Forecasts (ECMWF)

8-14 Day Temperature Departure

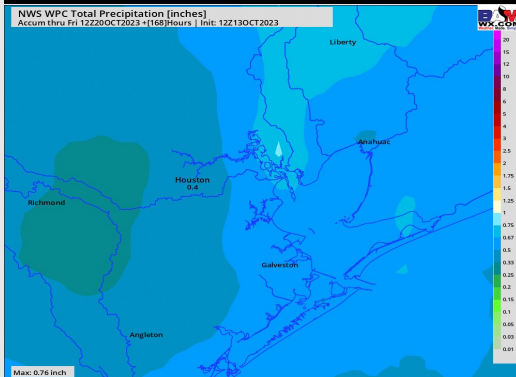


This service is based on data European Centre for Medium-range Weather Forecasts (ECMWF)

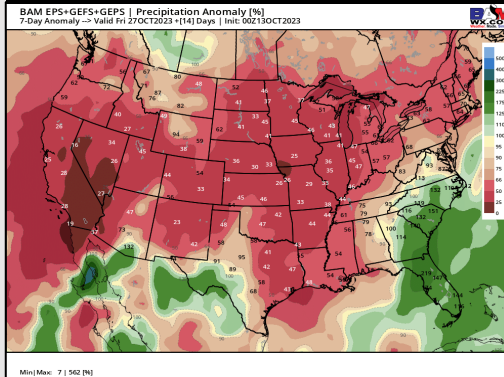
15-30 Day Temperature Departure



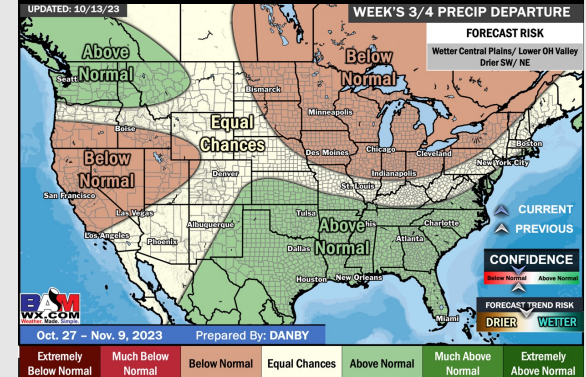
Next 7 Day Total Precipitation



8-14 Day % of Average Precip.



15-30 Day % of Average Precip.



- Isolated rain chances will be possible today and tomorrow before the weekend dries out and better chances next weekend. Temperatures are favored to remain below normal this week.
- Generally drier and average temperatures are expected into the week 2 timeframe.
- Below normal temperatures and above normal chances for precipitation are favored in the weeks 3/4 timeframe.