

# Houston Pilots Forecast Package



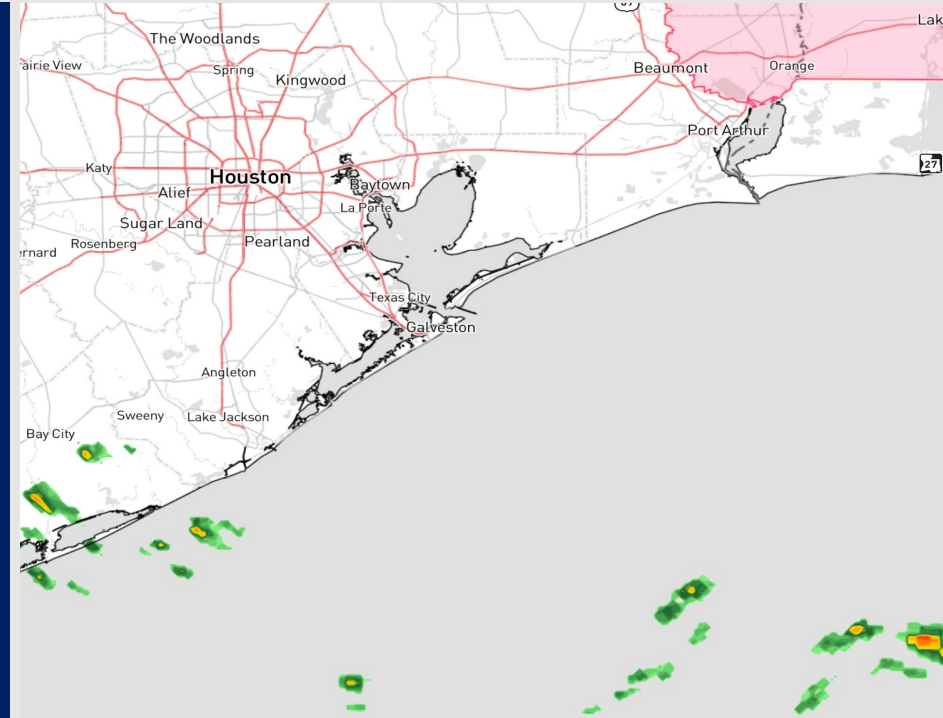
Updated: 5:20 AM CT

Saturday, September 30, 2023

Forecaster: Alyssa Elliott

## Weather Headlines

- Not anticipating tropical development in the Gulf of Mexico over the next 7-10 days.
- Majority of rain chances over the next 2 - 3 days secluded S of 11/12 and near the Boarding Station.
- No excessive wind concerns over the next 2 - 3 days
- Not anticipating any visibility concerns over the next few days.



**Radar/NWS Alerts: 5:00 AM CT**



As always, please do not hesitate to reach out to us with any forecast questions via the chat option on the Weather Porthole or our on-call number, **(317)-560-8122** press 1 for forecast questions.

# Houston Pilots Visibility Chart (miles)



Time	Sat 4am	Sat 5am	Sat 6am	Sat 7am	Sat 8am	Sat 9am	Sat 10am	Sat 11am	Sat 12pm	Sat 1pm	Sat 2pm	Sat 3pm	Sat 4pm	Sat 5pm	Sat 6pm	Sat 7pm	Sat 8pm	Sat 9pm	Sat 10pm	Sat 11pm	Sun 12am	Sun 1am	Sun 2am	Sun 3am	Sun 4am	Sun 5am	Sun 6am	Sun 7am	Sun 8am	Sun 9am	Sun 10am	Sun 11am	Sun 12pm	Sun 1pm	Sun 2pm	Sun 3pm	
610 Bridge	10	10	10	10	7	10	10	10	10	10	10	10	10	10	10	10	10	10	10	10	10	10	10	10	10	10	10	10	6	8	10	10	10	10	10	10	
Kinder 1	10	10	10	10	7	10	10	10	10	10	10	10	10	10	10	10	10	10	10	10	10	10	10	10	10	10	10	10	7	9	10	10	10	10	10	10	
Greens Bayou	10	10	10	10	7	10	10	10	10	10	10	10	10	10	10	10	10	10	10	10	10	10	10	10	10	10	10	10	8	10	10	10	10	10	10	10	
Shell Crude	10	10	10	10	8	10	10	10	10	10	10	10	10	10	10	10	10	10	10	10	10	10	10	10	10	10	10	10	8	10	10	10	10	10	10	10	
Lynchburg Ferries	10	10	10	10	8	10	10	10	10	10	10	10	10	10	10	10	10	10	10	10	10	10	10	10	10	10	10	10	8	10	10	10	10	10	10	10	
Exxon 3	10	10	10	10	9	10	10	10	10	10	10	10	10	10	10	10	10	10	10	10	10	10	10	10	10	10	10	10	8	10	10	10	10	10	10	10	
Morgans Point	10	10	10	10	9	10	10	10	10	10	10	10	10	10	10	10	10	10	10	10	10	10	10	10	10	10	10	10	8	10	10	10	10	10	10	10	
75/76	10	10	10	10	9	10	10	10	10	10	10	10	10	10	10	10	10	10	10	10	10	10	10	10	10	10	10	10	10	10	10	10	10	10	10	10	
63/64	10	10	10	10	9	10	10	10	10	10	10	10	10	10	10	10	10	10	10	10	10	10	10	10	10	10	10	10	10	10	10	10	10	10	10	10	
51/52	10	10	10	10	10	10	10	10	10	10	10	10	10	10	10	10	10	10	10	10	10	10	10	10	10	10	10	10	10	10	10	10	10	10	10	10	
37/38	10	10	10	10	10	10	10	10	10	10	10	10	10	10	10	10	10	10	10	10	10	10	10	10	10	10	10	10	10	10	10	10	10	10	10	10	
25/26	10	10	10	10	10	10	10	10	10	10	10	10	10	10	10	10	10	10	10	10	10	10	10	10	10	10	10	10	10	10	10	10	10	10	10	10	10
11/12	10	10	10	10	10	10	10	10	10	10	10	10	10	10	10	10	10	10	10	10	10	10	10	10	10	10	10	10	10	10	10	10	10	10	10	10	10
1 & 2 Bravo	10	10	10	10	10	10	10	10	10	10	10	10	10	10	10	10	10	10	10	10	10	10	10	10	10	10	10	10	10	10	10	10	10	10	10	10	10

**NOTE: This is automated data that may/may not agree with the official BAM thinking that's found on the daily slides or special visibility report slides. This data should be used as a guide only**

# Houston Pilots Wind Chart



## Forecast Confidence



## Example

Sustained wind 13 Knots  
Gusts 18 Knots  
Wind from the N

WS: 13  
G:18  
N

Time Knots	Sat 4am	Sat 5am	Sat 6am	Sat 7am	Sat 8am	Sat 9am	Sat 10am	Sat 11am	Sat 12pm	Sat 1pm	Sat 2pm	Sat 3pm	Sat 4pm	Sat 5pm	Sat 6pm	Sat 7pm	Sat 8pm	Sat 9pm	Sat 10pm	Sat 11pm	Sun 12am	Sun 1am	Sun 2am	Sun 3am	Sun 4am	Sun 5am	Sun 6am	Sun 7am	Sun 8am	Sun 9am	Sun 10am	Sun 11am	Sun 12pm	Sun 1pm	Sun 2pm	Sun 3pm
610 Bridge	3	4	4	4	5	7	8	8	8	8	8	8	9	9	9	9	7	6	5	4	4	4	4	4	4	5	5	6	7	9	9	9	9	9	9	9
	ENE	ENE	NE	NE	ENE	ENE	E	E	E	E	E	E	ESE	ESE	ESE	SE	SE	SE	SE	ESE	E	E	ENE	ENE	NE	NE	NE	NE	ENE	ENE	E	E	E	E	E	
Kinder 1	3	4	4	4	5	7	8	8	8	8	8	8	9	9	9	9	7	6	5	4	4	4	4	4	4	5	6	7	9	9	9	9	9	9	9	
	ENE	ENE	NE	NE	ENE	ENE	E	E	E	E	E	E	ESE	ESE	ESE	SE	SE	SE	SE	ESE	ESE	E	E	ENE	ENE	NE	NE	NE	ENE	ENE	E	E	E	E	ESE	
Greens Bayou	4	4	4	4	5	7	8	8	8	8	8	8	9	9	9	9	7	5	5	4	4	4	4	4	4	5	6	7	8	9	9	9	9	9	9	
	ENE	ENE	NE	NE	ENE	ENE	E	E	E	E	E	E	ESE	ESE	ESE	SE	SE	SE	SE	ESE	ESE	E	E	ENE	ENE	NE	NE	NE	ENE	ENE	E	E	E	E	ESE	
Shell Crude	4	4	4	5	6	7	8	8	8	8	8	8	9	9	10	10	8	7	6	5	4	4	4	4	4	5	5	6	8	9	9	9	9	9	9	
	ENE	ENE	NE	NE	ENE	ENE	E	E	E	E	E	E	ESE	ESE	ESE	SE	SE	SE	SE	ESE	ESE	E	E	ENE	ENE	NE	NE	NE	ENE	ENE	E	E	E	E	ESE	
Lynchburg Ferries	5	4	4	5	6	7	8	8	9	8	8	8	9	10	10	9	7	6	5	5	5	5	5	5	5	6	6	8	9	10	10	10	9	10	10	
	ENE	ENE	NE	NE	ENE	ENE	E	E	E	E	E	E	ESE	ESE	ESE	SE	SE	SE	SE	ESE	ESE	E	E	ENE	ENE	NE	NE	NE	ENE	ENE	E	E	E	E	ESE	
Exxon 3	6	5	6	6	7	8	9	9	9	8	9	10	11	11	11	9	8	7	6	6	5	5	6	6	6	6	6	7	8	9	10	10	10	10	11	
	ENE	ENE	NE	NE	ENE	ENE	E	E	E	E	E	ESE	ESE	ESE	SE	SE	SE	SE	SE	ESE	ESE	E	E	ENE	ENE	NE	NE	NE	ENE	ENE	E	E	E	E	ESE	
Morgans Point	8	7	7	7	8	9	10	10	9	8	9	11	12	13	12	11	10	9	8	8	7	8	8	8	7	8	8	9	10	11	11	10	11	12	12	
	E	ENE	ENE	ENE	ENE	ENE	E	E	E	E	E	ESE	ESE	ESE	SE	SE	SE	SE	SE	ESE	ESE	ESE	ESE	E	E	ENE	NE	NE	NE	ENE	ENE	E	E	ESE	ESE	
75/76	11	10	10	10	11	12	12	11	10	9	11	13	14	15	14	13	12	12	10	10	10	11	11	11	11	11	11	12	13	13	12	11	11	12	14	
	E	E	ENE	ENE	ENE	ENE	E	E	E	E	ESE	ESE	ESE	SE	SE	ESE	ESE	ESE	ESE	ESE	ESE	ESE	ESE	E	E	ENE	ENE	NE	NE	ENE	ENE	E	E	ESE	ESE	
63/64	12	11	11	11	12	12	12	11	11	10	12	13	14	15	15	14	13	12	11	11	11	12	12	12	12	12	12	13	14	15	14	13	12	12	13	
	E	E	E	ENE	ENE	ENE	E	E	E	E	ESE	ESE	ESE	ESE	ESE	ESE	ESE	ESE	ESE	ESE	ESE	ESE	ESE	E	E	ENE	ENE	NE	NE	ENE	ENE	E	E	ESE	ESE	
51/52	12	11	11	11	11	12	12	12	12	11	12	13	14	14	14	13	12	11	11	11	12	12	12	12	12	12	13	14	14	14	14	14	13	14	14	
	E	E	E	ENE	ENE	ENE	E	E	E	E	ESE	ESE	ESE	ESE	ESE	ESE	ESE	ESE	ESE	ESE	ESE	ESE	ESE	E	E	ENE	ENE	NE	NE	ENE	ENE	E	E	ESE	ESE	
37/38	13	12	11	11	11	12	12	13	13	13	13	13	14	14	13	13	12	11	11	11	12	12	12	12	12	12	13	14	14	14	14	14	14	14	14	
	E	E	E	ENE	ENE	ENE	E	E	E	E	E	ESE	ESE	ESE	ESE	ESE	ESE	ESE	ESE	ESE	ESE	ESE	ESE	E	E	E	ENE	ENE	ENE	ENE	ENE	ENE	E	E	E	E
25/26	11	11	10	10	10	11	12	13	13	13	13	13	13	13	12	11	11	10	10	11	11	11	12	12	12	12	13	13	14	14	14	14	14	14	14	
	E	E	E	E	ENE	ENE	E	E	E	E	E	E	E	E	E	E	E	ESE	ESE	ESE	ESE	ESE	ESE	E	E	E	ENE	ENE	ENE	ENE	ENE	ENE	E	E	E	E
11/12	12	11	11	11	11	11	12	13	13	13	13	13	13	13	12	11	11	10	10	11	12	12	12	12	12	13	13	14	15	14	14	14	14	14	14	
	E	E	E	E	E	E	E	E	E	E	E	E	E	E	E	E	E	E	E	ESE	ESE	ESE	ESE	ESE	E	E	E	E	ENE	ENE	ENE	ENE	ENE	ENE	E	E
1 & 2 Bravo	15	14	14	13	13	14	14	14	14	15	15	14	14	14	14	13	13	13	13	14	15	14	15	15	16	17	17	17	17	17	17	18	17	17	16	15
	E	E	E	E	E	E	E	E	E	E	E	E	E	E	E	E	E	E	E	E	E	E	E	E	E	E	E	E	E	E	E	E	E	E	E	E

NOTE: This is automated data that may/may not agree with the official BAM thinking that's found on the daily slides. This data should be used as a guide only

# Houston Pilots: sat. 9/30/2023



## Forecast Discussion

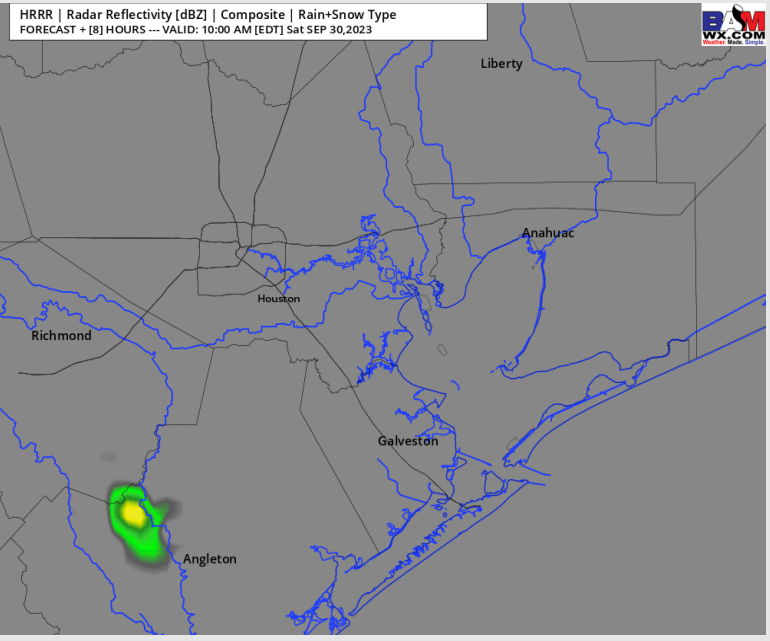
**Precip:** Stations S of 11/12 will see scattered shower chances (20%) from 6 AM -1 PM. Favoring dry conditions for all other stations throughout the rest of the day.

**Wind:** Winds will be out of the ESE throughout the day. Winds N of Morgan's Point will begin the day generally calm at 1-6 kts, increasing to 3-8 kts between 10 AM – 7 PM, before returning to 1-6 kts and remaining at that clip for the remainder of the day. Winds S of Morgan's Point will be 13-18 kts throughout the day. Gusts reaching 20 kts will be possible near the Boarding Station.

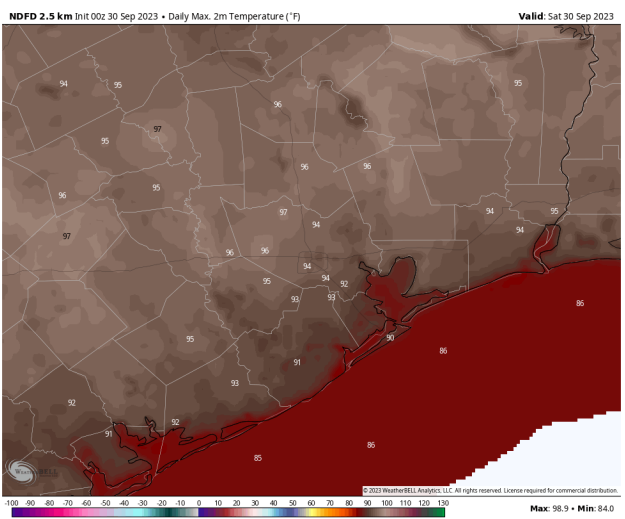
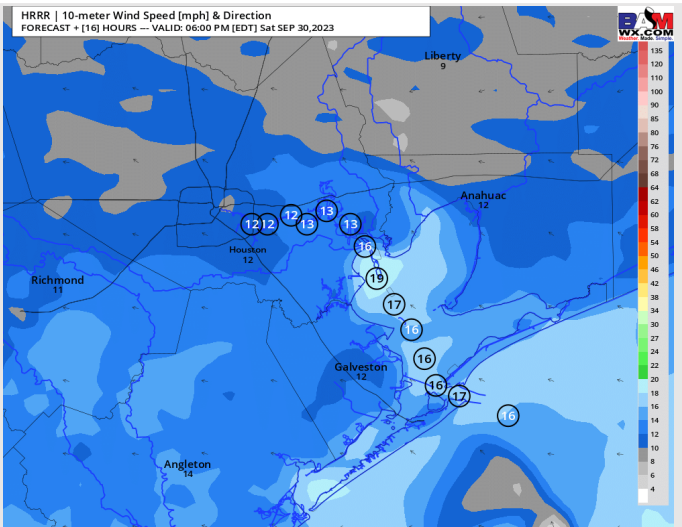
**High Temps:** S of Morgan's Point: Mid 80s F. N of Morgan's Point: Mid 90s F.

**Visibility:** Not anticipating any visibility issues at this time.

## Precip Image: 9 AM CT



Wind Speed:  
5 PM CT



High Temps  
Today

# Houston Pilots: Sun. 10/1/2023



## Forecast Discussion

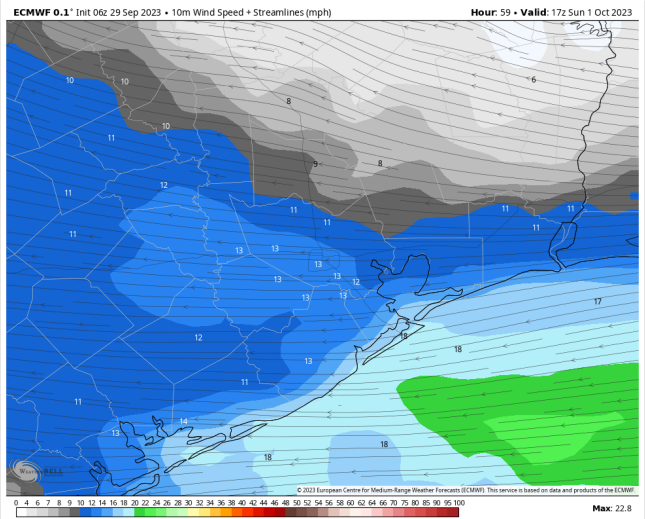
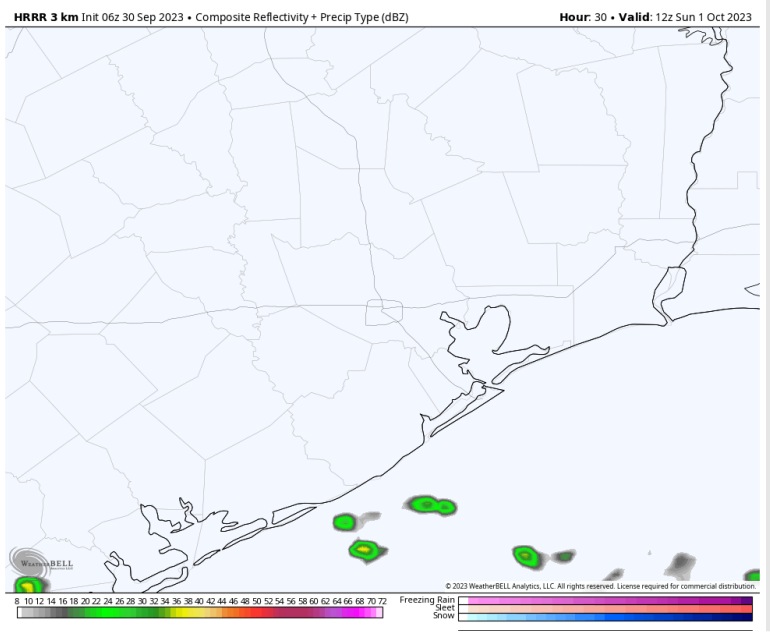
**Precip:** Stations S of 11/12 will see low-end isolated shower chances (10-20%) through 7 PM. Favoring dry conditions for all other stations throughout the day.

**Wind:** Winds will be out of the ESE throughout the day. Winds N of Morgan's Point will begin the day generally calm at 1-6 kts, increasing to 6-11 kts between 10 AM – 7 PM, before returning to 1-6 kts and remaining at that clip for the remainder of the day. Winds S of Morgan's Point will be 10-15 kts throughout the day.

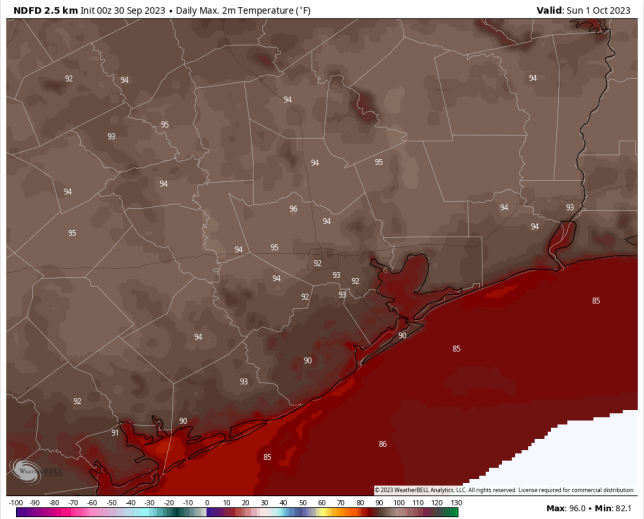
**High Temps:** S of Morgan's Point: Mid 80s F. N of Morgan's Point: Mid 90s F.

**Visibility:** Not anticipating any visibility issues currently.

## Precip Image: 7 AM CT



Wind Speed:  
12 PM CT



High Temps  
Sunday

# Houston Pilots: Mon. 10/2/2023



## Forecast Discussion

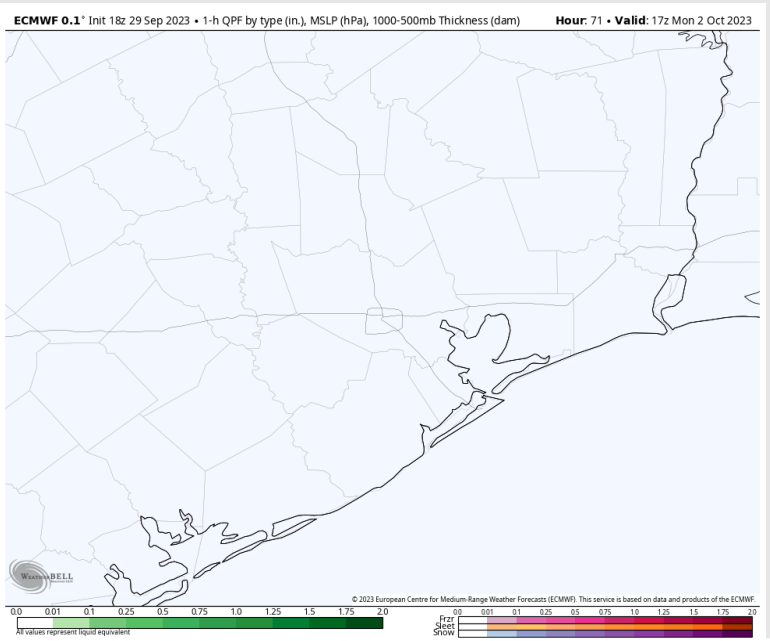
**Precip:** Favoring dry conditions throughout the day on Monday.

**Wind:** Winds are expected to remain out of the SE/ESE throughout the day. For Stations **S of Morgan's Point**, winds will begin the day relatively calm at 2-7 kts but will gradually increase to 7-12 kts by 1 PM and will return to 2-7 kts by 7 PM. Winds **S of Morgan's Point** will be 10-15 kts throughout the day.

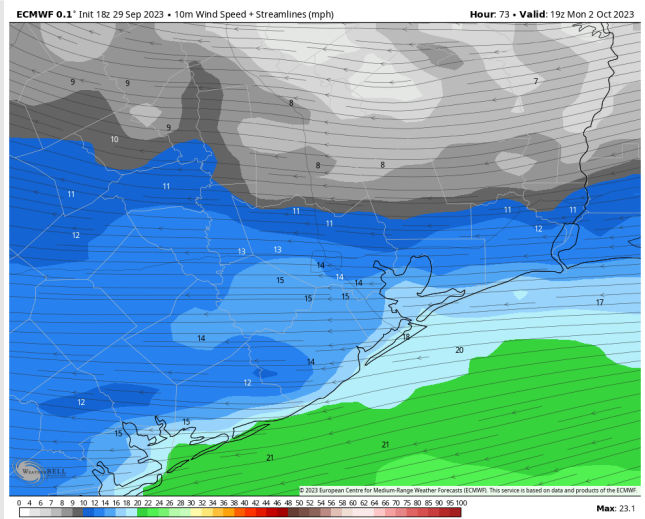
**High Temps:** **S of Morgan's Point:** Mid 80s F. **N of Morgan's Point:** Mid 90s F.

**Visibility:** No visibility concerns expected for today.

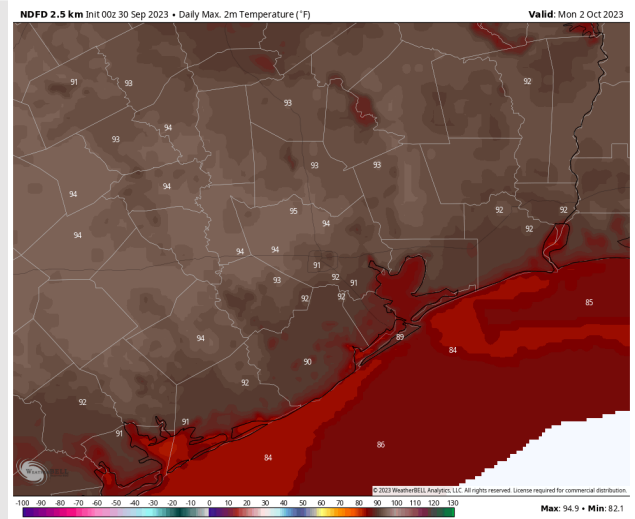
## Precip Image: 12 PM CT



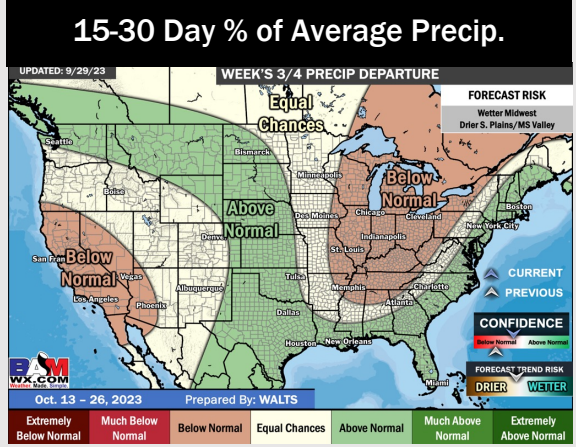
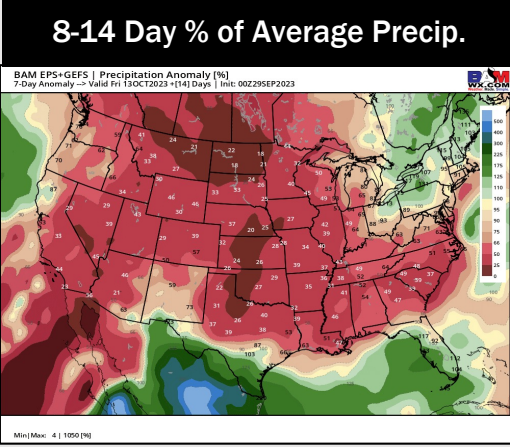
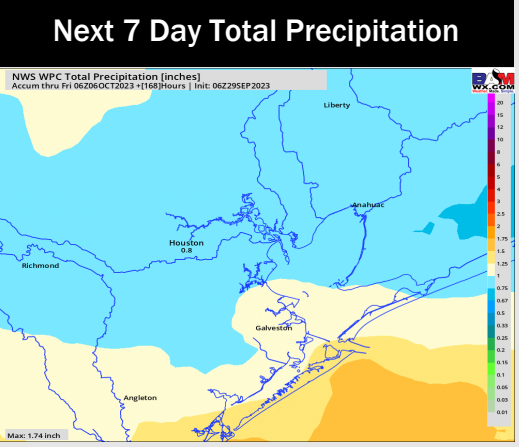
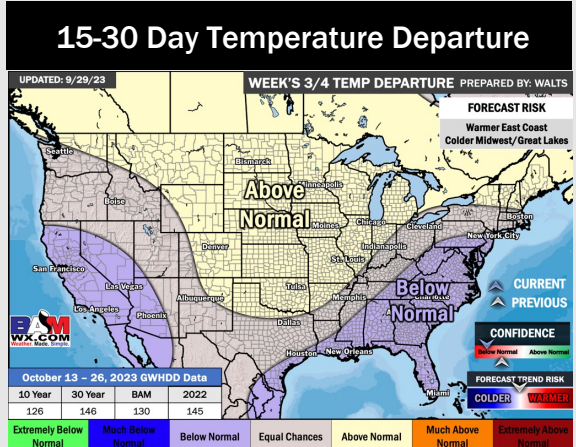
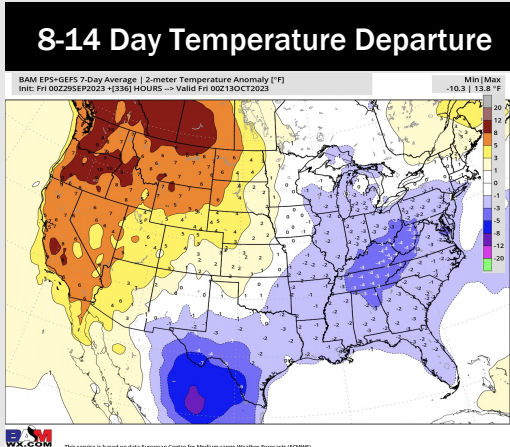
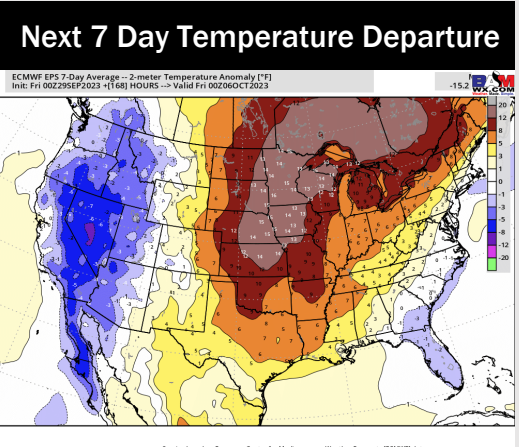
Wind Speed:  
6 PM CT



High Temps  
Monday



# Houston Pilots: 9/30/23



- Isolated chances continue today and throughout the weekend. 11/12 and the Boarding Station will be in better position to see spotty shower chances. Current thinking is the pattern starts to dry out heading and through the beginning of the week. Temperatures will remain above normal.
- Generally drier/slightly colder than average temperatures are expected into the week 2 timeframe.
- Below normal temperatures and above normal chances for precipitation are favored in the weeks 3/4 timeframe.