

Houston Pilots Forecast Package



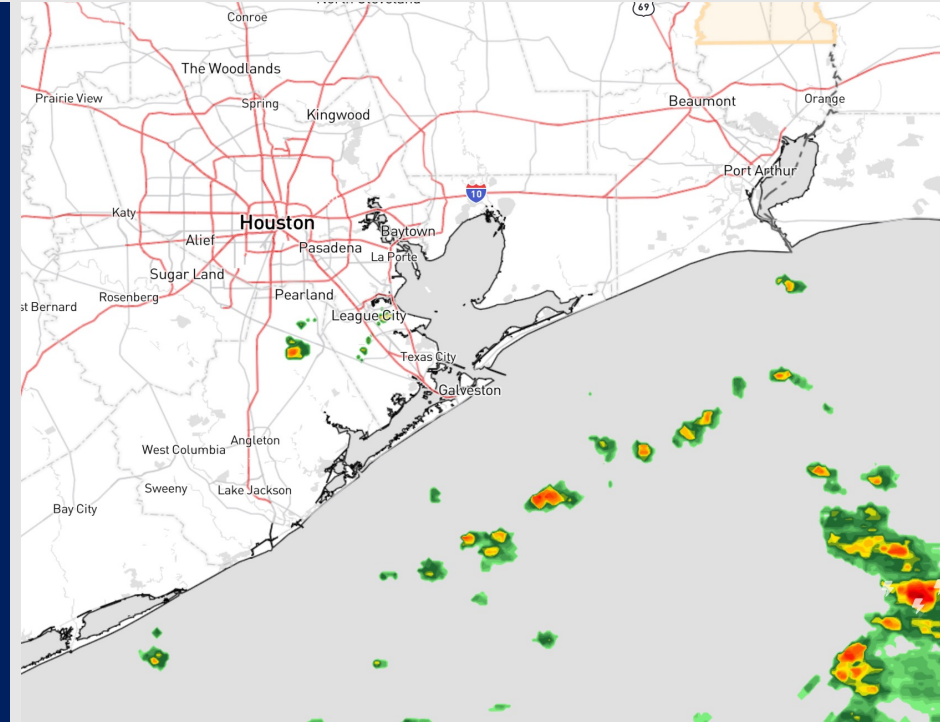
Updated: 5:00 AM CT

Friday, September 29, 2023

Forecaster: Alyssa Elliott

Weather Headlines

- Not anticipating tropical development in the Gulf of Mexico over the next 7-10 days.
- Majority of rain chances over the next 2 – 3 days secluded S of 25/26, with isolated chances for Stations N.
- No excessive wind concerns over the next 2 – 3 days outside of gusts embedded in thunderstorms today (**More details in slides below**).
- Not anticipating any visibility concerns over the next few days.



Radar/NWS Alerts: 4:45 AM CT



As always, please do not hesitate to reach out to us with any forecast questions via the chat option on the Weather Porthole or our on-call number, **(317)-560-8122** press 1 for forecast questions.

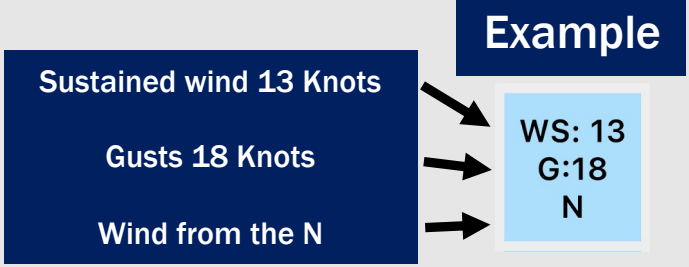
Houston Pilots Visibility Chart (miles)



Time	Fri 4am	Fri 5am	Fri 6am	Fri 7am	Fri 8am	Fri 9am	Fri 10am	Fri 11am	Fri 12pm	Fri 1pm	Fri 2pm	Fri 3pm	Fri 4pm	Fri 5pm	Fri 6pm	Fri 7pm	Fri 8pm	Fri 9pm	Fri 10pm	Fri 11pm	Sat 12am	Sat 1am	Sat 2am	Sat 3am	Sat 4am	Sat 5am	Sat 6am	Sat 7am	Sat 8am	Sat 9am	Sat 10am	Sat 11am	Sat 12pm	Sat 1pm	Sat 2pm	Sat 3pm	
610 Bridge	10	10	10	10	9	10	10	10	10	10	10	10	10	10	10	10	10	10	10	10	10	10	10	10	10	10	10	10	6	10	10	10	10	10	10	10	
Kinder 1	10	10	10	10	9	10	10	10	10	10	10	10	10	10	10	10	10	10	10	10	10	10	10	10	10	10	10	10	7	10	10	10	10	10	10	10	
Greens Bayou	10	10	10	10	9	10	10	10	10	10	10	10	10	10	10	10	10	10	10	10	10	10	10	10	10	10	10	10	8	10	10	10	10	10	10	10	
Shell Crude	10	10	10	10	9	10	10	10	10	10	10	10	10	10	10	10	10	10	10	10	10	10	10	10	10	10	10	10	8	10	10	10	10	10	10	10	
Lynchburg Ferries	10	10	10	10	9	10	10	10	10	10	10	10	10	10	10	10	10	10	10	10	10	10	10	10	10	10	10	10	8	10	10	10	10	10	10	10	
Exxon 3	10	10	10	10	9	10	10	10	10	10	10	10	10	10	10	10	10	10	10	10	10	10	10	10	10	10	10	10	8	10	10	10	10	10	10	10	
Morgans Point	10	10	10	10	9	10	10	10	10	10	10	10	10	10	10	10	10	10	10	10	10	10	10	10	10	10	10	10	8	10	10	10	10	10	10	10	
75/76	10	10	10	10	10	10	10	10	10	10	10	10	10	10	10	10	10	10	10	10	10	10	10	10	10	10	10	10	8	10	10	10	10	10	10	10	
63/64	10	10	10	10	10	10	10	10	10	10	10	10	10	10	10	10	10	10	10	10	10	10	10	10	10	10	10	10	10	10	10	10	10	10	10	10	
51/52	10	10	10	10	10	10	10	10	10	10	10	10	10	10	10	10	10	10	10	10	10	10	10	10	10	10	10	10	10	10	10	10	10	10	10	10	
37/38	10	10	10	10	10	10	10	10	10	10	10	10	10	10	10	10	10	10	10	10	10	10	10	10	10	10	10	10	10	10	10	10	10	10	10	10	
25/26	10	10	10	10	10	10	10	10	10	10	10	10	10	10	10	10	10	10	10	10	10	10	10	10	10	10	10	10	10	10	10	10	10	10	10	10	10
11/12	10	10	10	10	10	10	10	10	10	10	10	10	10	10	10	10	10	10	10	10	10	10	10	10	10	10	10	10	10	10	10	10	10	10	10	10	10
1 & 2 Bravo	10	10	10	10	10	10	10	10	10	10	10	10	10	10	10	10	10	10	10	10	10	10	10	10	10	10	10	10	10	10	10	10	10	10	10	10	10

NOTE: This is automated data that may/may not agree with the official BAM thinking that's found on the daily slides or special visibility report slides. This data should be used as a guide only

Houston Pilots Wind Chart



Time Knots	Fri 4am	Fri 5am	Fri 6am	Fri 7am	Fri 8am	Fri 9am	Fri 10am	Fri 11am	Fri 12pm	Fri 1pm	Fri 2pm	Fri 3pm	Fri 4pm	Fri 5pm	Fri 6pm	Fri 7pm	Fri 8pm	Fri 9pm	Fri 10pm	Fri 11pm	Sat 12am	Sat 1am	Sat 2am	Sat 3am	Sat 4am	Sat 5am	Sat 6am	Sat 7am	Sat 8am	Sat 9am	Sat 10am	Sat 11am	Sat 12pm	Sat 1pm	Sat 2pm	Sat 3pm		
610 Bridge	2	2	3	4	4	6	7	7	7	7	7	7	7	8	9	9	7	6	5	4	4	4	4	4	4	4	4	4	5	7	8	8	8	8	8	8	8	8
	3	4	4	5	6	8	9	9	9	10	10	11	11	11	12	12	11	9	8	7	6	7	6	6	6	5	6	6	6	7	9	11	12	12	12	12	13	
Kinder 1	ENE	ENE	ENE	ENE	ENE	ENE	E	E	E	E	E	E	ESE	ESE	ESE	SE	SE	SE	SE	ESE	ESE	E	E	ENE	ENE	NE	NE	NE	ENE	ENE	ENE	E	E	E	E	E		
	2	2	3	4	4	6	7	7	7	7	7	7	7	8	9	9	7	6	5	4	4	4	4	4	4	4	4	5	7	8	8	8	8	8	8	8	8	
Greens Bayou	4	4	4	5	6	8	9	9	9	9	10	10	11	11	11	12	11	8	8	7	6	7	6	6	6	5	5	6	7	9	11	11	11	11	12	13		
	ENE	ENE	ENE	ENE	ENE	ENE	E	E	E	E	E	ESE	ESE	ESE	SE	SE	SE	SE	ESE	E	E	ENE	ENE	NE	NE	NE	NE	ENE	ENE	ENE	E	E	E	E	E	ESE		
Shell Crude	2	2	3	4	4	6	7	7	7	7	7	7	8	8	9	8	7	5	5	4	4	4	4	4	4	4	4	5	7	8	8	8	8	8	8	8	9	
	4	4	4	4	6	7	8	9	9	9	9	9	10	10	11	11	11	10	9	8	7	6	7	6	6	6	6	6	6	8	9	11	11	11	12	13		
Lynchburg Ferries	ENE	ENE	ENE	ENE	ENE	ENE	E	E	E	E	E	ESE	ESE	ESE	SE	SE	SE	SE	ESE	E	E	ENE	ENE	NE	NE	NE	NE	ENE	ENE	ENE	E	E	E	E	ESE			
	3	3	3	4	5	6	7	7	7	7	7	7	8	8	9	9	7	6	5	5	5	5	5	5	5	5	5	6	8	8	8	8	8	8	9	10		
Exxon 3	5	5	5	6	7	8	9	9	9	9	10	10	11	12	11	11	10	9	8	7	6	7	7	6	6	6	6	7	8	9	11	11	11	12	13	14		
	ENE	ENE	ENE	ENE	ENE	ENE	E	E	E	E	ESE	ESE	SE	SE	SE	SE	SE	SE	ESE	ESE	ESE	ESE	E	E	ENE	ENE	NE	NE	NE	ENE	ENE	ENE	E	E	ESE			
Morgans Point	6	6	6	7	7	8	8	8	8	8	8	9	10	11	11	11	10	9	8	8	7	8	8	8	7	7	7	8	9	10	9	9	9	10	11			
	7	7	8	8	9	10	10	10	9	9	11	11	12	13	13	13	12	11	9	8	7	8	8	8	8	8	8	9	10	11	12	12	11	12	13	14		
75/76	E	ENE	ENE	ENE	ENE	ENE	E	E	E	ESE	ESE	SE	SE	SE	SE	SE	SE	SE	ESE	ESE	ESE	ESE	E	E	ENE	ENE	ENE	ENE	ENE	ENE	ENE	E	E	ESE				
	8	8	9	9	10	10	10	9	8	7	9	10	11	13	14	13	12	11	10	10	11	11	11	11	11	11	10	10	11	12	12	11	10	9	11	13		
63/64	9	9	10	11	11	12	11	10	10	10	11	12	13	15	15	15	14	13	11	11	11	12	12	12	12	11	11	12	12	13	13	12	12	12	14	15		
	E	E	ENE	ENE	ENE	ENE	E	E	E	ESE	ESE	SE	SE	SE	SE	SE	SE	SE	ESE	ESE	ESE	ESE	ESE	E	E	ENE	ENE	ENE	ENE	ENE	ENE	ENE	E	E	ESE			
51/52	9	9	10	11	11	11	10	10	10	9	10	11	11	12	13	13	12	11	10	11	11	12	12	12	11	11	11	12	12	13	13	12	12	12	13			
	10	10	11	12	12	12	11	11	11	11	11	12	13	14	15	14	14	12	12	12	12	13	13	13	12	12	12	13	13	14	13	13	13	13	14	15		
37/38	E	E	E	ENE	ENE	ENE	E	E	E	ESE	ESE	ESE	ESE	ESE	ESE	ESE	ESE	ESE	ESE	ESE	ESE	ESE	ESE	E	E	ENE	ENE	ENE	ENE	ENE	ENE	E	E	ESE				
	9	9	10	10	11	11	11	11	11	10	11	11	11	12	12	12	12	10	10	11	11	11	11	12	12	11	11	11	12	13	13	13	12	12	13			
25/26	10	10	11	12	12	12	12	13	12	12	12	12	12	13	14	14	13	12	11	12	12	13	13	13	13	13	13	13	14	14	14	14	14	15	15			
	E	E	E	E	E	E	E	E	E	ESE	ESE	ESE	ESE	ESE	ESE	ESE	ESE	ESE	ESE	ESE	ESE	ESE	ESE	ESE	E	E	E	ENE	ENE	ENE	ENE	E	E	E	ESE			
11/12	9	9	10	10	10	10	11	11	11	11	11	11	11	11	11	11	10	9	9	10	10	10	10	11	10	10	10	10	11	12	12	12	12	12	12			
	11	11	11	11	11	12	12	12	12	12	12	12	12	13	13	12	11	12	12	12	12	12	12	13	13	13	12	12	12	12	12	12	13	14	14	14		
1 & 2 Bravo	E	E	E	E	E	E	E	E	E	E	E	E	E	ESE	ESE	ESE	ESE	ESE	ESE	ESE	ESE	ESE	ESE	ESE	E	E	E	E	ENE	ENE	ENE	E	E	E	E			
	12	12	13	12	13	12	13	13	12	12	12	11	11	12	13	12	13	12	12	12	13	13	13	14	14	14	14	14	14	14	14	14	14	14	14	14		
	13	13	14	13	14	13	14	14	13	13	13	12	12	13	14	14	14	13	13	14	14	14	15	15	15	15	15	15	15	15	15	15	15	15	15	14		
	E	E	E	E	E	E	E	E	E	E	E	E	E	ESE	ESE	ESE	ESE	ESE	ESE	ESE	ESE	ESE	ESE	E	E	E	E	E	E	E	E	E	E	E	E			

NOTE: This is automated data that may/may not agree with the official BAM thinking that's found on the daily slides. This data should be used as a guide only

Houston Pilots: Fri. 9/29/2023



Forecast Discussion

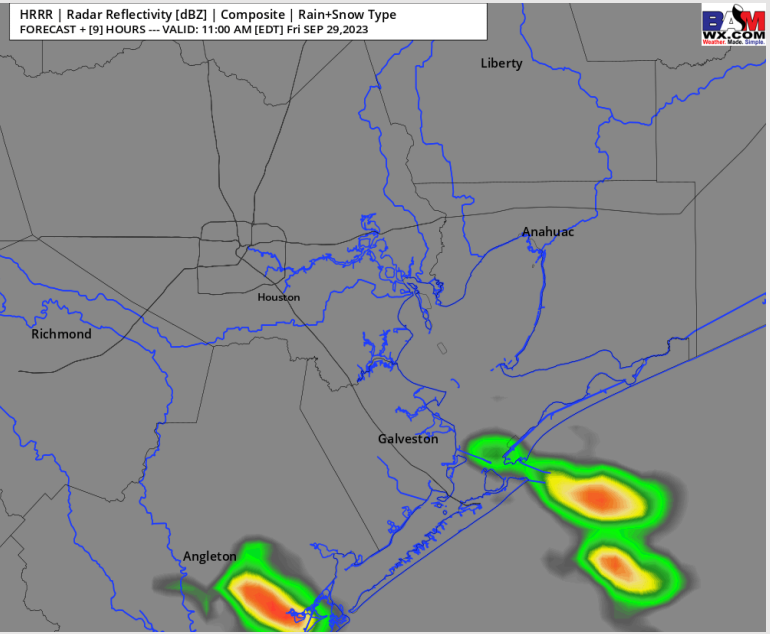
Precip: Anticipating scattered showers / storms (20%) to continue this morning with the best chances occurring between 9 AM – 2 PM (40%). Better coverage for these storms will be for stations S of Morgan’s Point and at the Boarding Station. After 2 PM, storms favored to remain south of all stations.

Wind: Winds are expected to remain out of the SE/ESE throughout the day, but gradually increase into the afternoon. During the morning hours anticipating winds of 3-6kts for all Stations. For Stations S of Morgan’s Point, winds will increase to 13-18 kts by 7 AM where they will remain through the day. **Gusts up to 35 kts possible if caught under a stronger storm.** For locations N of Morgan’s Point, winds of 5-10 kts are favored after 12 PM. These winds will continue through the evening hours.

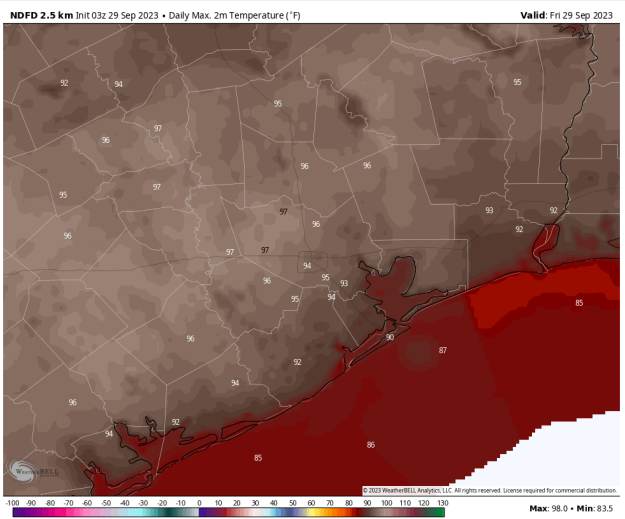
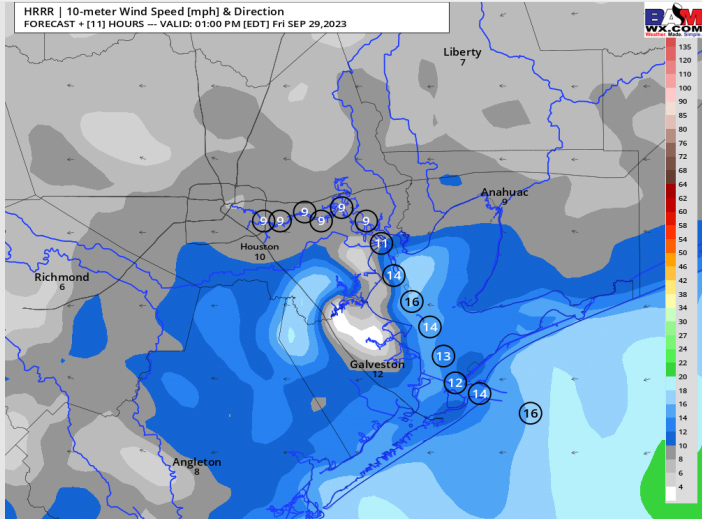
High Temps: S of Morgan’s Point: Mid 80s F. N of Morgan’s Point: Mid 90s F.

Visibility: No visibility concerns expected for today.

Precip Image: 10 AM CT



Wind Speed:
12 PM CT



High Temps
Today

Houston Pilots: sat. 9/30/2023



Forecast Discussion

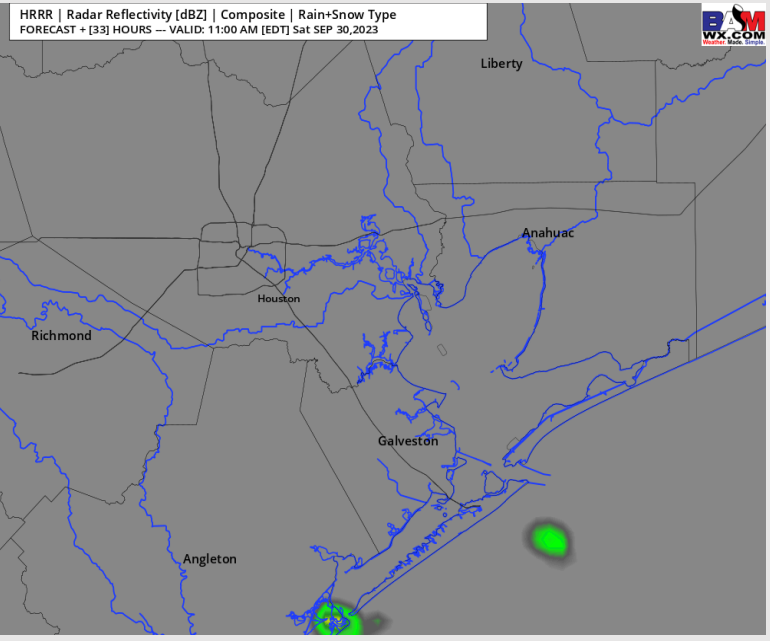
Precip: Stations S of 25/26 will see scattered shower chances (20-30%) from 11 AM -1 PM. Favoring dry conditions for all other stations throughout the day.

Wind: Winds will be out of the ESE throughout the day. Winds N of Morgan's Point will begin the day generally calm at 1-6 kts, increasing to 3-8 kts between 10 AM – 7 PM, before returning to 1-6 kts and remaining at that clip for the remainder of the day. Winds S of Morgan's Point will be 8-13 kts throughout the day.

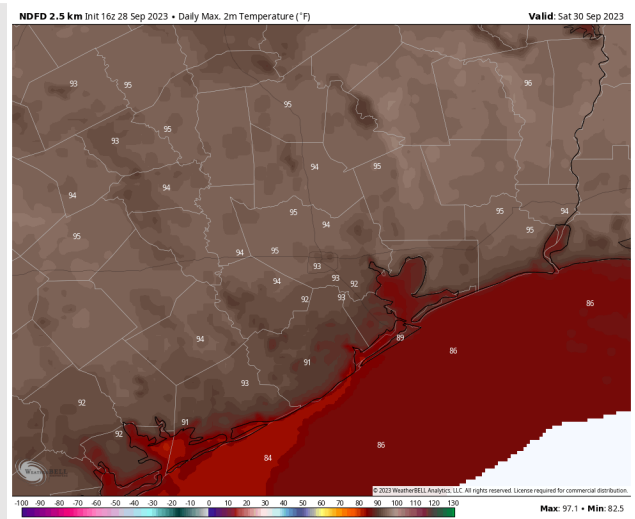
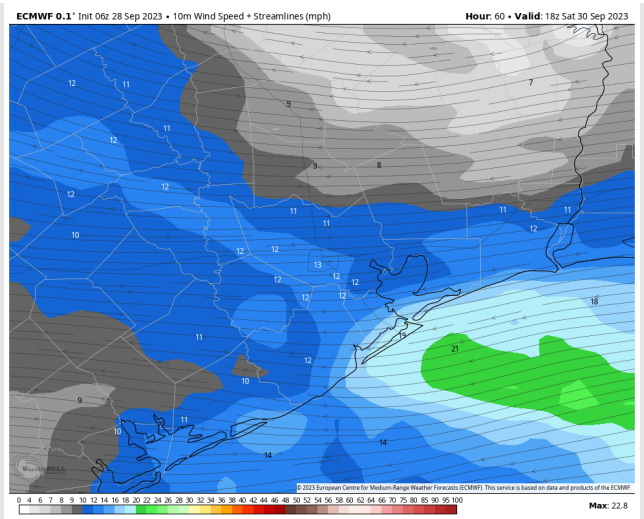
High Temps: S of Morgan's Point: Mid 80s F. N of Morgan's Point: Mid 90s F.

Visibility: Not anticipating any visibility issues at this time.

Precip Image: 10 AM CT



Wind Speed:
1 PM CT



High Temps
Saturday

Houston Pilots: Sun. 10/1/2023



Forecast Discussion

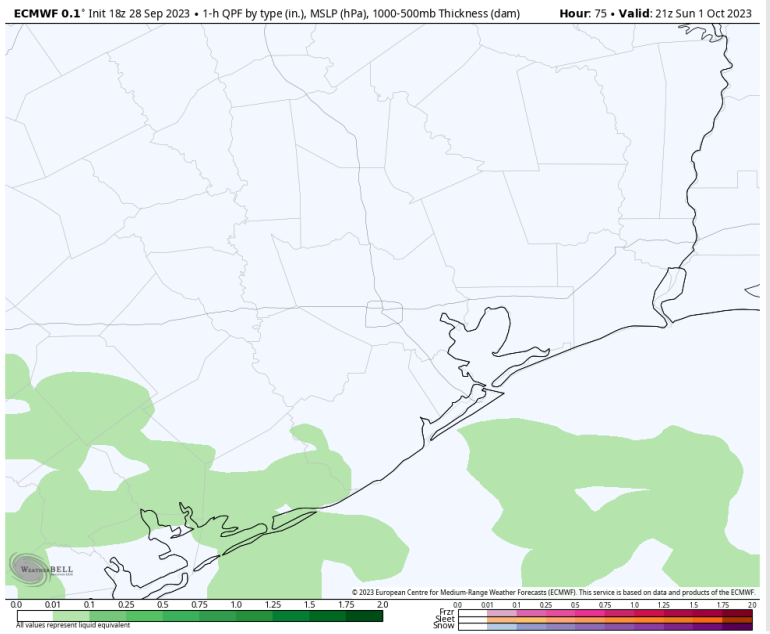
Precip: Stations S of 25/26 will see scattered shower chances (20-30%) through 7 PM. Favoring dry conditions for all other stations throughout the day.

Wind: Winds will be out of the ESE throughout the day. Winds N of Morgan's Point will begin the day generally calm at 1-6 kts, increasing to 5-10 kts between 10 AM – 7 PM, before returning to 1-6 kts and remaining at that clip for the remainder of the day. Winds S of Morgan's Point will be 10-15 kts throughout the day.

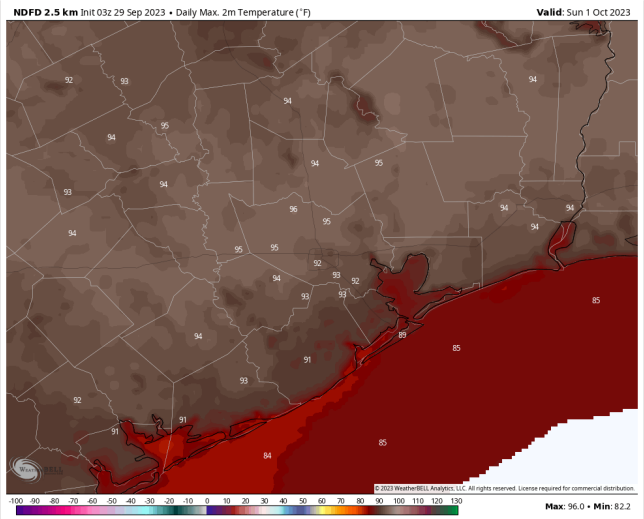
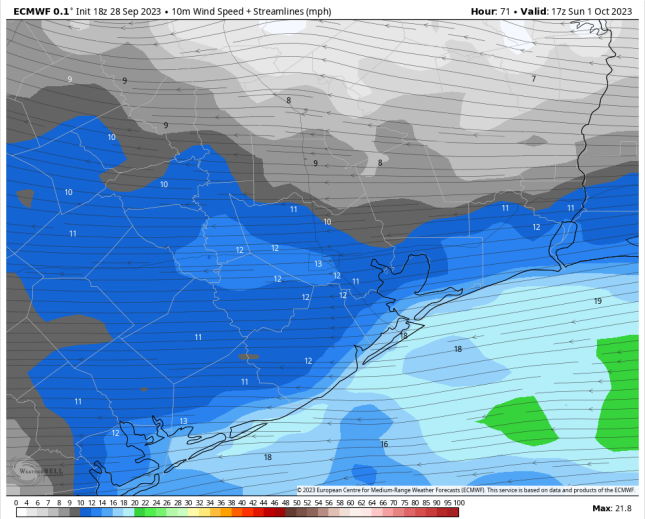
High Temps: S of Morgan's Point: Mid 80s F. N of Morgan's Point: Mid 90s F.

Visibility: Not anticipating any visibility issues currently.

Precip Image: 4 PM CT

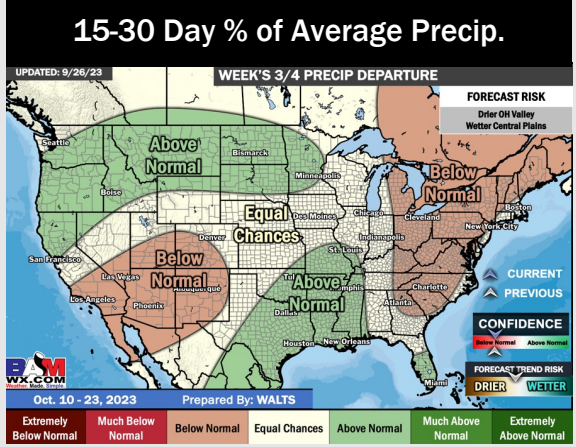
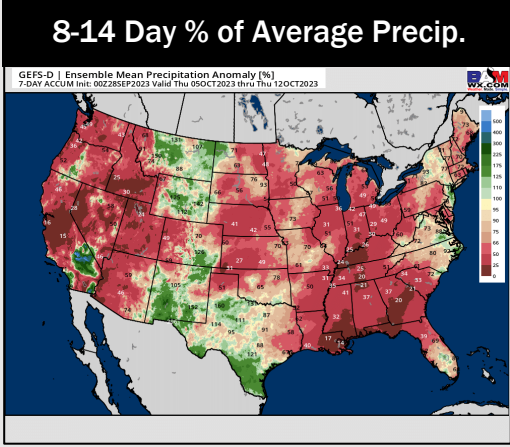
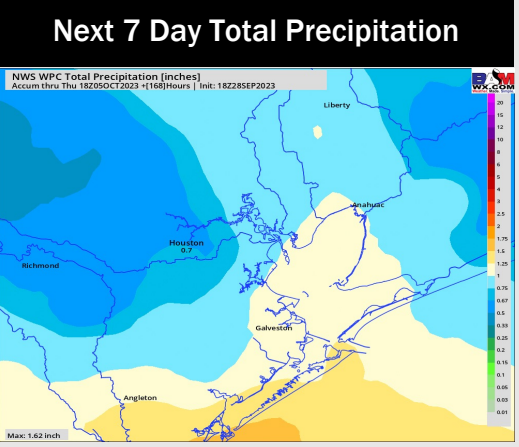
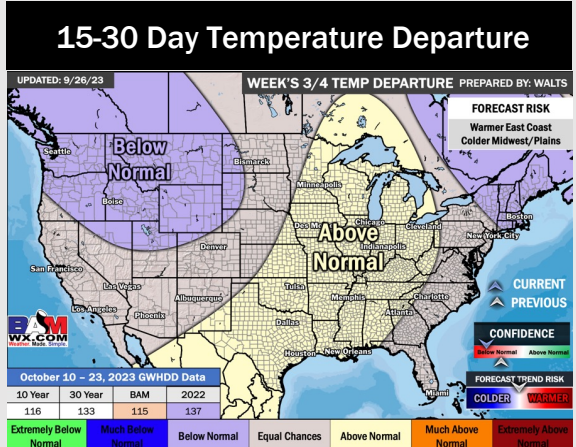
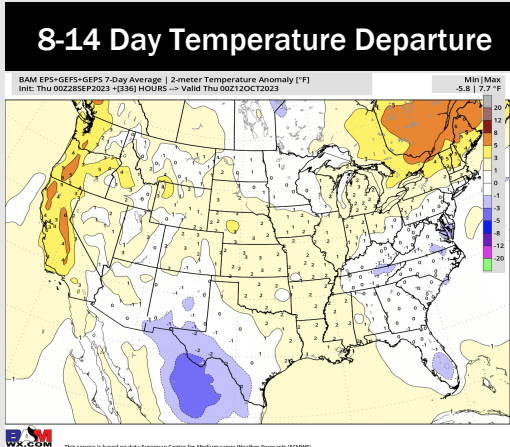
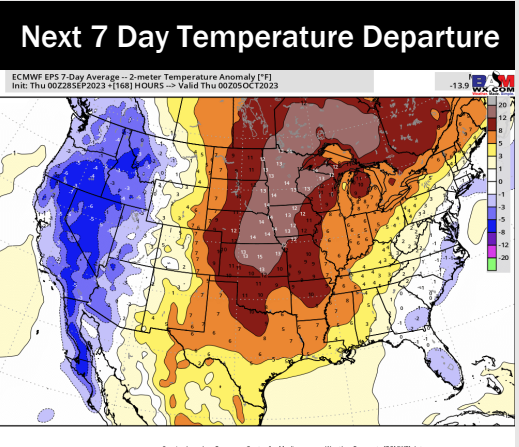


Wind Speed:
12 PM CT



High Temps
Sunday

Houston Pilots: 9/29/23



- Sporadic chances continue today and throughout the weekend. 11/12 and the Boarding Station will be in better position to see spotty shower chances. Current thinking is the pattern starts to dry out heading and through the beginning of the week. Temperatures will remain above normal.
- Generally drier/slightly warmer than average temperatures are expected into the week 2 timeframe.
- Above normal temperatures and above normal chances for precipitation are favored in the weeks 3/4 timeframe.