

Houston Pilots Forecast Package



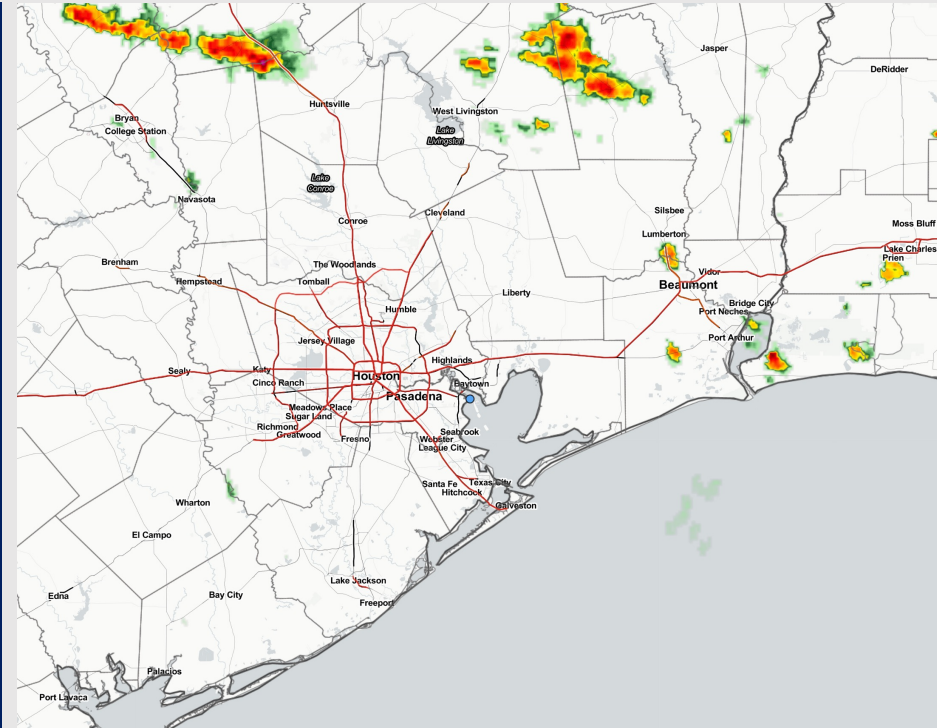
Updated: 2:15 PM CT

Monday, September 25, 2023

Forecaster: John Kemper

Weather Headlines

- Not anticipating tropical development in the Gulf of Mexico over the next 7-10 days.
- Confidence increasing across the region for storm chances over the next 18 hours. **See slides below for information on gust potential.**
- Outside of storms, no excessive wind concerns over the next 2 – 3 days.
- Not anticipating any visibility concerns over the next few days.



Radar/NWS Alerts: 2:05 PM CT



As always, please do not hesitate to reach out to us with any forecast questions via the chat option on the Weather Porthole or our on-call number, **(317)-560-8122** press 1 for forecast questions.

Houston Pilots Visibility Chart (miles)



Time	Mon 1pm	Mon 2pm	Mon 3pm	Mon 4pm	Mon 5pm	Mon 6pm	Mon 7pm	Mon 8pm	Mon 9pm	Mon 10pm	Mon 11pm	Tue 12am	Tue 1am	Tue 2am	Tue 3am	Tue 4am	Tue 5am	Tue 6am	Tue 7am	Tue 8am	Tue 9am	Tue 10am	Tue 11am	Tue 12pm	Tue 1pm	Tue 2pm	Tue 3pm	Tue 4pm	Tue 5pm	Tue 6pm	Tue 7pm	Tue 8pm	Tue 9pm	Tue 10pm	Tue 11pm	Wed 12am		
610 Bridge	10	10	10	10	10	10	10	10	10	10	10	10	10	10	9	7	6	6	6	4	7	10	10	10	10	10	10	10	10	10	10	10	10	10	10	10	10	
Kinder 1	10	10	10	10	10	10	10	10	10	10	10	10	10	10	9	7	7	7	7	5	7	10	10	10	10	10	10	10	10	10	10	10	10	10	10	10	10	
Greens Bayou	10	10	10	10	10	10	10	10	10	10	10	10	10	10	9	7	7	7	7	6	7	10	10	10	10	10	10	10	10	10	10	10	10	10	10	10	10	
Shell Crude	10	10	10	10	10	10	10	10	10	10	10	10	10	10	9	9	7	7	7	7	7	10	10	10	10	10	10	10	10	10	10	10	10	10	10	10	10	
Lynchburg Ferries	10	10	10	10	10	10	10	10	10	10	10	10	10	10	9	9	7	7	7	7	7	10	10	10	10	10	10	10	10	10	10	10	10	10	10	10	10	
Exxon 3	10	10	10	10	10	10	10	10	10	10	10	10	10	10	10	10	8	7	8	7	8	10	10	10	10	10	10	10	10	10	10	10	10	10	10	10	10	
Morgans Point	10	10	10	10	10	10	10	10	10	10	10	10	10	10	10	10	8	7	8	7	8	10	10	10	10	10	10	10	10	10	10	10	10	10	10	10	10	10
75/76	10	10	10	10	10	10	10	10	10	10	10	10	10	10	10	10	9	10	10	7	9	10	10	10	10	10	10	10	10	10	10	10	10	10	10	10	10	
63/64	10	10	10	10	10	10	10	10	10	10	10	10	10	10	10	10	10	10	10	7	9	10	10	10	10	10	10	10	10	10	10	10	10	10	10	10	10	
51/52	10	10	10	10	10	10	10	10	10	10	10	10	10	10	10	10	10	10	10	7	10	10	10	10	10	10	10	10	10	10	10	10	10	10	10	10	10	
37/38	10	10	10	10	10	10	10	10	10	10	10	10	10	10	10	10	10	10	10	7	10	10	10	10	10	10	10	10	10	10	10	10	10	10	10	10	10	
25/26	10	10	10	10	10	10	10	10	10	10	10	10	10	10	10	10	10	10	10	7	10	10	10	10	10	10	10	10	10	10	10	10	10	10	10	10	10	
11/12	10	10	10	10	10	10	10	10	10	10	10	10	10	10	10	10	10	10	10	8	10	10	10	10	10	10	10	10	10	10	10	10	10	10	10	10	10	
1 & 2 Bravo	10	10	10	10	10	10	10	10	10	10	10	10	10	10	10	10	10	10	10	9	9	9	9	9	9	10	10	10	10	10	10	10	10	10	10	10	10	

NOTE: This is automated data that may/may not agree with the official BAM thinking that's found on the daily slides or special visibility report slides. This data should be used as a guide only

Houston Pilots Wind Chart



Forecast Confidence



Example

Sustained wind 13 Knots
Gusts 18 Knots
Wind from the N

WS: 13
G:18
N

Time Knots	Mon 1pm	Mon 2pm	Mon 3pm	Mon 4pm	Mon 5pm	Mon 6pm	Mon 7pm	Mon 8pm	Mon 9pm	Mon 10pm	Mon 11pm	Tue 12am	Tue 1am	Tue 2am	Tue 3am	Tue 4am	Tue 5am	Tue 6am	Tue 7am	Tue 8am	Tue 9am	Tue 10am	Tue 11am	Tue 12pm	Tue 1pm	Tue 2pm	Tue 3pm	Tue 4pm	Tue 5pm	Tue 6pm	Tue 7pm	Tue 8pm	Tue 9pm	Tue 10pm	Tue 11pm	Wed 12am	
610 Bridge	5	5	6	6	6	5	5	4	4	3	3	2	2	2	2	2	2	2	2	2	2	3	4	4	4	4	5	6	6	6	5	4	4	3	3	2	
Kinder 1	5	5	6	6	6	5	5	4	4	3	3	2	2	2	2	2	2	2	2	2	2	3	4	4	4	4	5	5	6	6	5	4	4	3	3	2	
Greens Bayou	5	5	6	6	6	5	5	4	4	3	3	2	2	2	2	2	2	2	2	2	2	3	4	4	4	4	5	5	6	6	5	4	4	3	3	2	
Shell Crude	5	5	6	6	6	5	5	4	4	3	3	2	2	2	2	2	2	2	2	2	2	3	4	4	4	4	5	6	6	6	5	4	4	3	3	2	
Lynchburg Ferries	5	6	6	7	7	7	5	4	4	3	3	3	3	3	3	3	2	2	2	2	3	4	4	4	4	5	6	7	7	6	5	4	4	3	3	2	
Exxon 3	6	6	7	8	7	7	6	5	4	4	4	4	4	4	3	3	3	3	3	3	4	5	4	4	4	5	6	7	7	6	5	4	4	3	3	2	
Morgans Point	7	7	8	8	8	8	7	5	5	5	5	4	5	5	5	4	4	4	4	4	5	5	5	5	5	6	6	7	7	6	5	4	4	3	3	2	
75/76	7	8	8	9	10	9	9	7	6	6	6	6	6	6	6	7	6	6	6	6	6	7	7	6	6	7	8	9	10	10	10	10	8	7	6	6	5
63/64	7	8	8	8	10	9	9	6	6	6	6	6	6	6	6	7	6	6	6	6	7	7	7	6	5	5	6	7	8	9	9	9	8	7	6	6	5
51/52	7	7	7	8	10	9	8	6	6	5	6	6	6	6	6	6	6	6	6	6	7	7	6	5	5	5	6	7	8	9	8	7	6	5	6	5	
37/38	7	7	7	8	9	8	7	5	4	6	5	6	5	6	5	6	5	6	6	6	7	7	6	6	6	5	5	6	7	8	8	7	6	5	5	5	4
25/26	7	7	7	7	8	7	6	5	4	4	5	5	5	4	5	5	5	5	5	5	6	6	6	6	6	5	5	6	7	7	6	5	4	4	3	3	2
11/12	7	7	7	7	8	7	6	5	5	5	5	5	5	5	5	5	5	5	5	6	6	6	6	6	6	6	6	7	7	7	6	5	4	4	3	3	2
1 & 2 Bravo	7	6	7	7	9	8	7	6	5	6	6	6	6	6	6	6	6	6	6	6	7	7	7	6	6	5	5	5	5	5	4	4	3	3	2	2	1

NOTE: This is automated data that may/may not agree with the official BAM thinking that's found on the daily slides. This data should be used as a guide only

Forecast Discussion

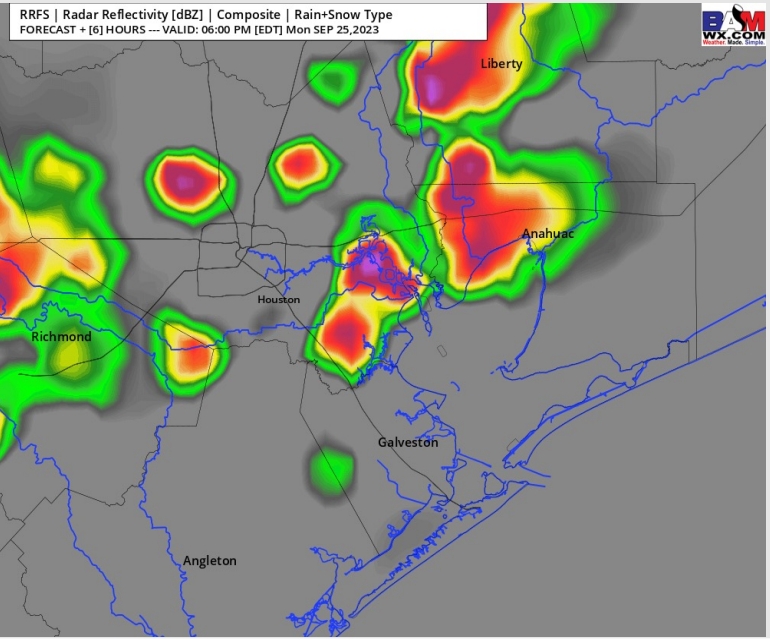
Precip: Anticipating a wave of strong to severe thunderstorms to develop to the north / northwest of all locations, eventually pushing towards the bay area and impacting region (70% chances) from 5PM-9PM, **These storms will also have the potential to produce brief wind gusts of 40 - 50 kts and hail.**

Wind: The above storm systems makes for a tricky wind forecast, as these storm systems will impact wind direction/ speeds. Any storms that pass can shift the winds more out of the north in their wake. Outside of storm induced wind shifts, sustained winds from 2PM-10PM **S of Morgan's Point** generally remain in the 3-8 kt range, with occasional pulses of 5-10 kt winds. Winds likely start to become variable/ light as a cold front approaches towards the 10 PM timeframe. For stations **N of Morgan's Point**, sustained winds of 4-9kts will continue to be favored for the remainder of the afternoon and evening.

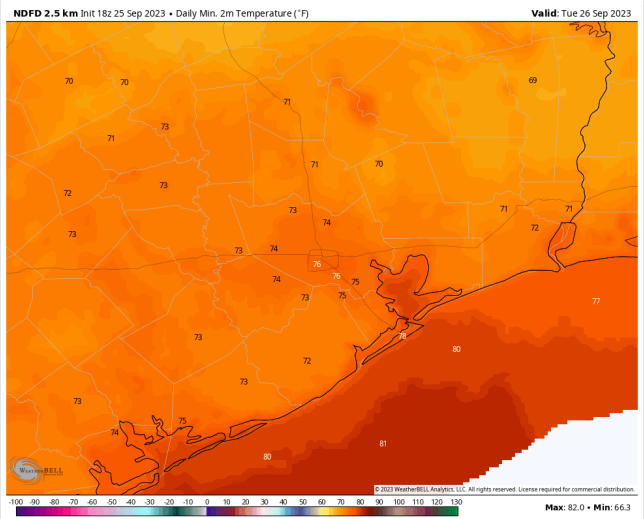
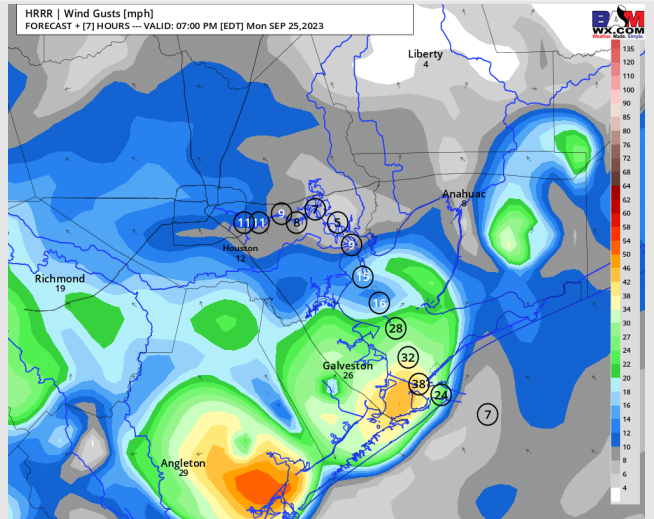
Low Temps: **N of Morgan's Point:** Mid 70s F. **S of Morgan's Point:** Low 80s / Upper 70s F.

Visibility: Not anticipating any visibility issues currently, as patchy fog risks will remain well to the northeast of the bay area for tomorrow morning.

Precip Image: 5 PM CT



Wind Gusts:
6 PM CT



Low Temps
Tuesday

Forecast Discussion

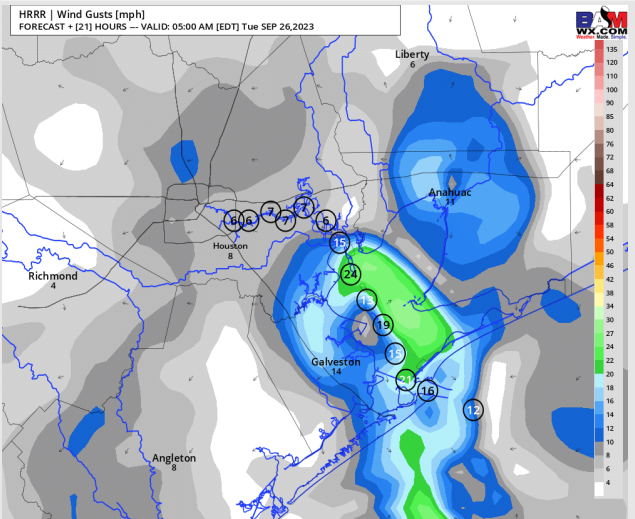
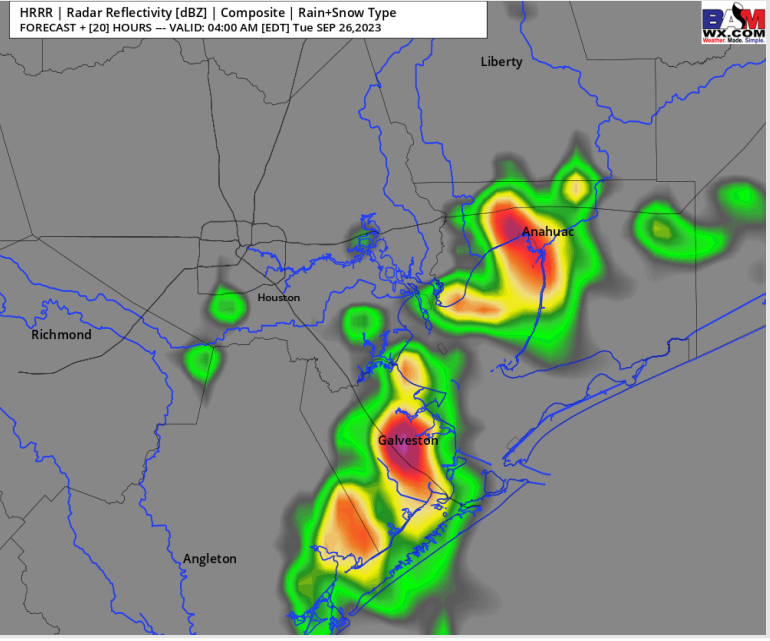
Precip: A cold front lingering around the HOU area will keep storm chances at play into early TUE morning, although the exact placement of where this front will be remains somewhat uncertain. Favoring spotty storms to hug the coastline for most of the day. Severe weather is not favored, but rain/storm chances will be at 30 - 40% quite consistently. The best window for a lull in coverage will be from 7 - 11 AM. **These storms will also have the potential to produce brief wind gusts of up to - 30 kt.**

Wind: Early TUE morning, a cold front is expected to pass which will usher in NE winds sustained around 3 - 7 kts. Winds are expected to gradually shift back out of the SE into the afternoon towards 1-2 PM. After this wind shift, winds will range at 3 - 8 kts across all stations.

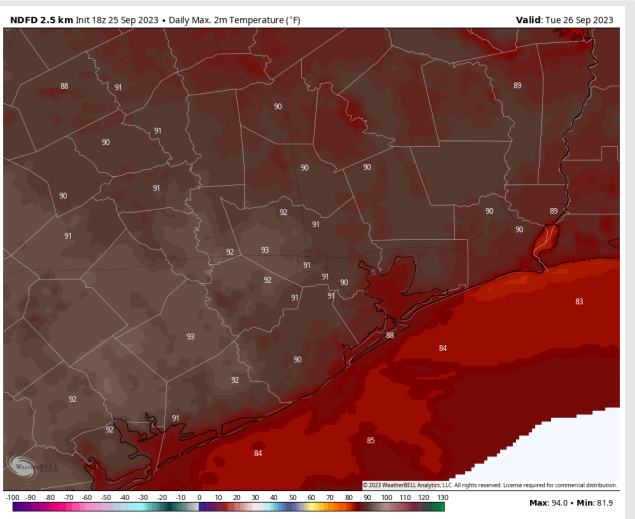
High Temps: S of Morgan's Point: Mid 80s F. N of Morgan's Point: Low 90s F.

Visibility: No visibility concerns currently.

Precip Image: 3 AM CT



Wind Gusts:
4 AM CT



High Temps
Tuesday

Houston Pilots: Wed. 9/27/2023



Forecast Discussion

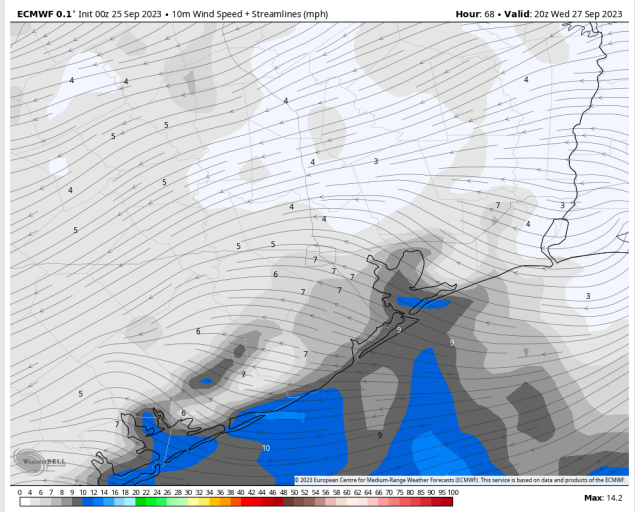
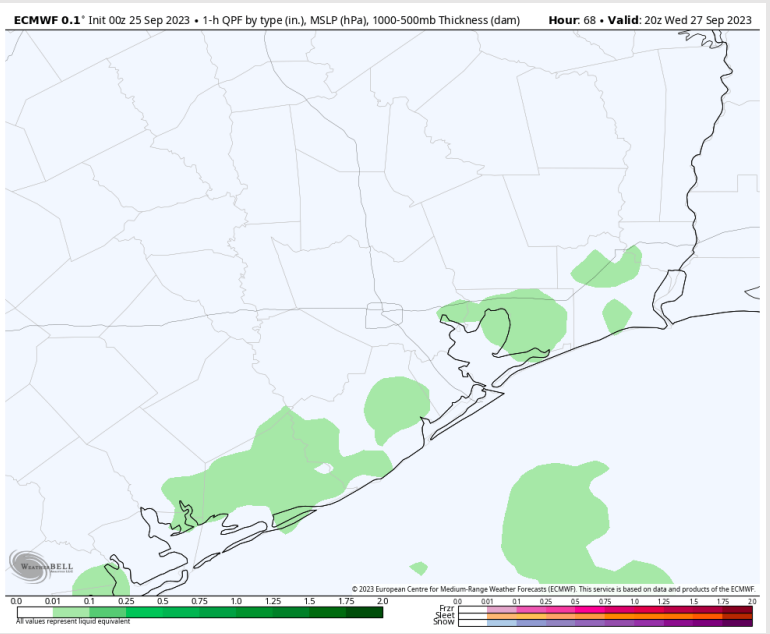
Precip: Scattered shower chances (20-30%) will be in play for the Boarding Station throughout the AM. These chances will then move on-shore towards 1 PM and be in play for all stations through 6 PM. Favoring dry conditions beyond this time.

Wind: Winds will be from the NE during the AM hours, veering SE by 3 PM. Winds for most Stations be generally calm at 1-6 kts throughout the day. Towards 11 AM winds will increase to 4 - 9 kts across all stations. Winds then calm to 3 - 7 kts after sunset.

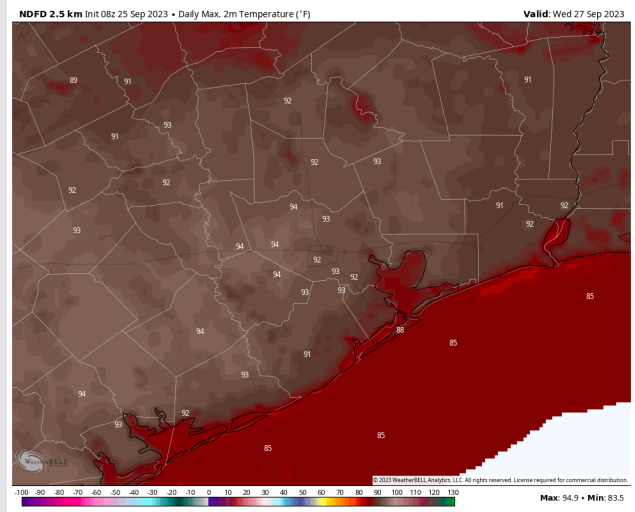
High Temps: S of Morgan's Point: Mid 80s F. N of Morgan's Point: Low/Mid 90s F.

Visibility: Not anticipating any fog issues currently.

Precip Image: 3 PM CT

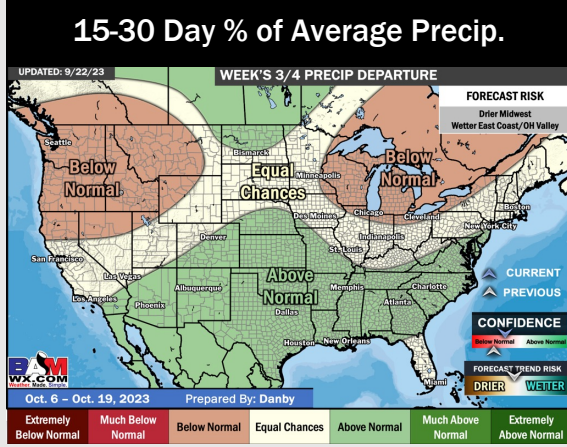
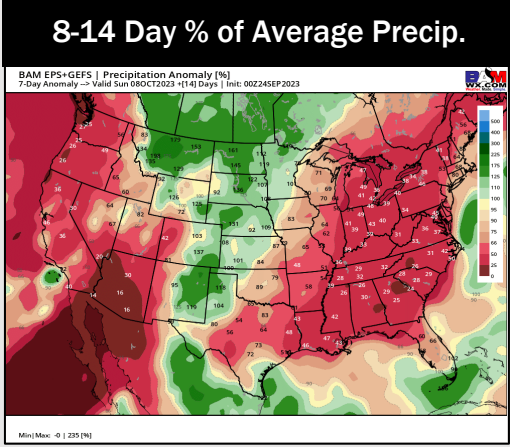
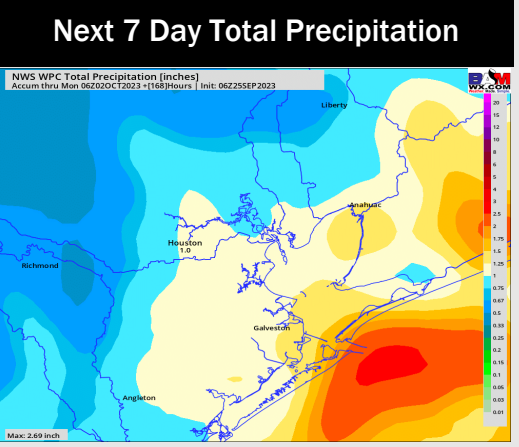
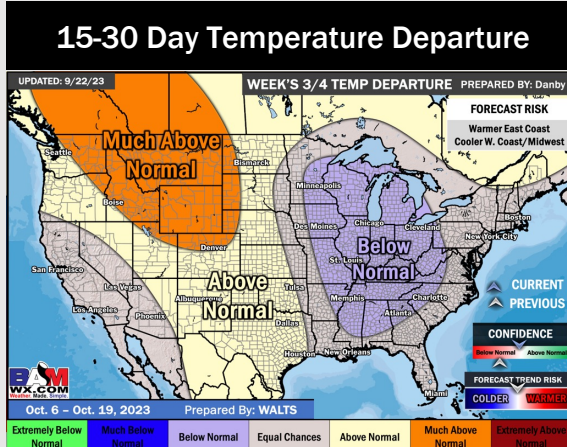
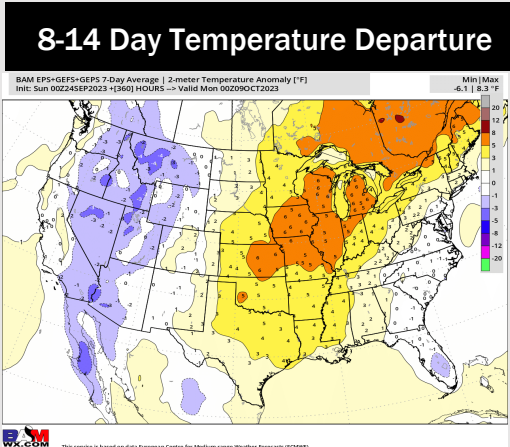
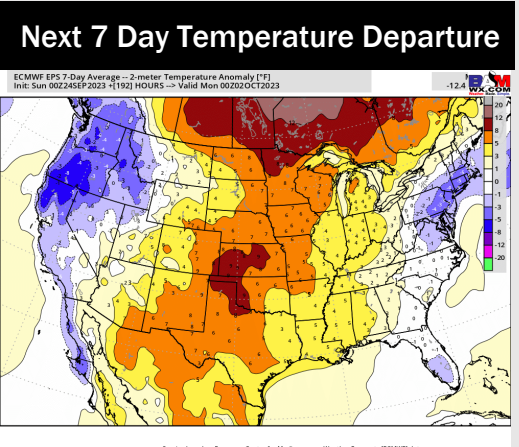


Wind Speed:
3 PM CT



High Temps
Wednesday

Houston Pilots: 9/25/23



- The cold front mentioned on the MON slide will hang around the area providing for sporadic chances through Friday. 11/12 and the Boarding Station will be in better position to see spotty shower chances. Current thinking is the pattern starts to dry out heading into the weekend. Temperatures will remain above normal.
- Generally drier/ warmer than average temperatures are expected into the week 2 timeframe.
- Above normal temperatures and above normal chances for precipitation are favored in the weeks 3/4 timeframe.