

# Houston Pilots Forecast Package



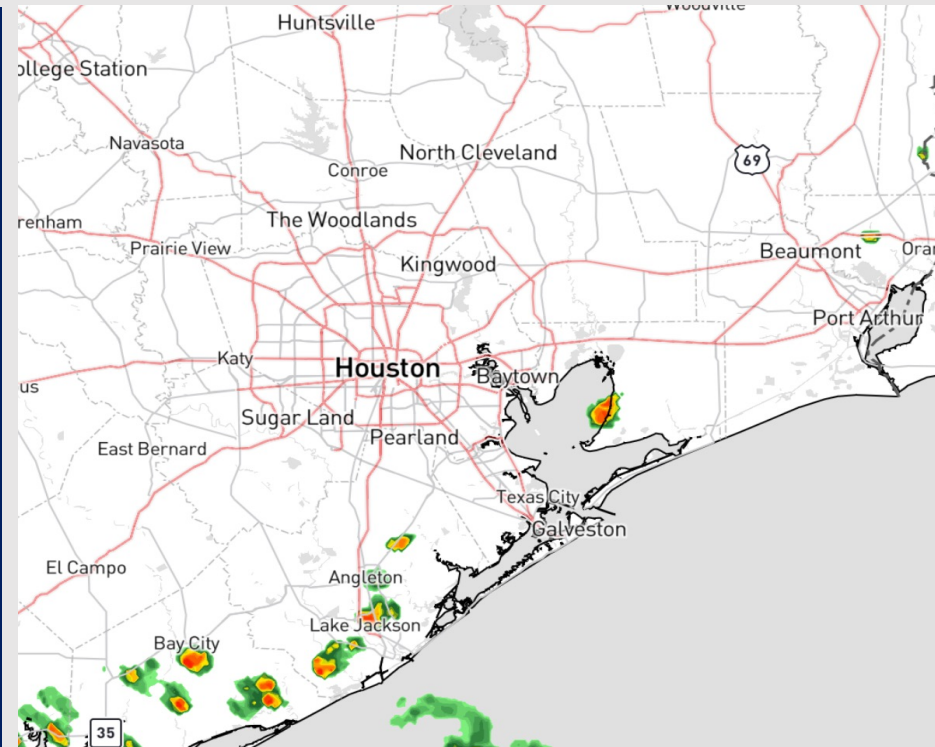
Updated: 1:15 PM CT

Saturday, September 2, 2023

Forecaster: Tyler Riggles

## Weather Headlines

- Not anticipating tropical development in the Gulf of Mexico over the next 7-10 days but monitoring for potential development in the Atlantic beyond September 8<sup>th</sup>.
- Favoring scattered showers/storms throughout Labor Day weekend.
- Not anticipating any visibility concerns over the next few days.



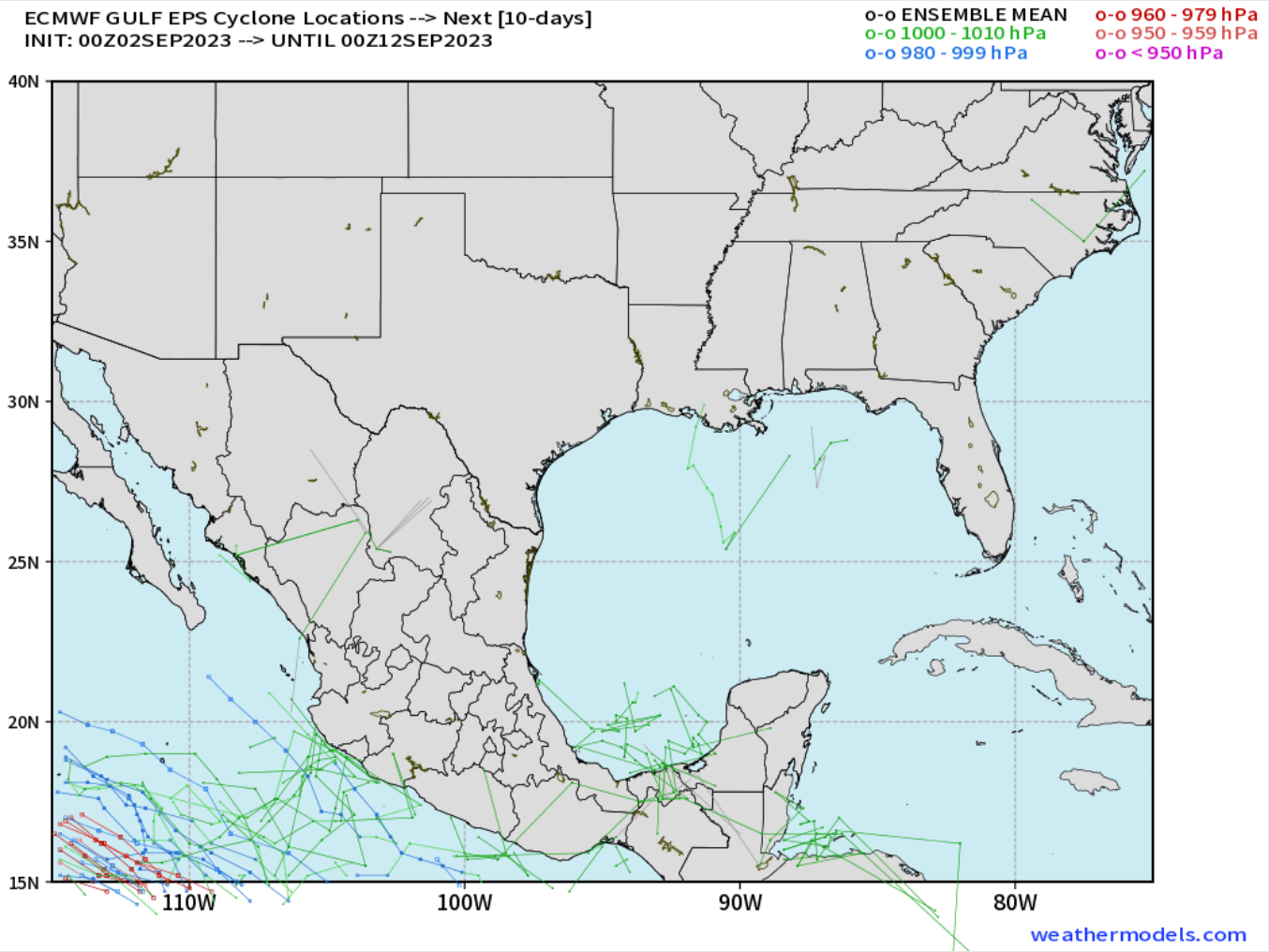
**Radar/NWS Alerts: 1:15 PM CT**



As always, please do not hesitate to reach out to us with any forecast questions via the chat option on the Weather Porthole or our on-call number, **(317)-560-8122** press 1 for forecast questions.

# Houston Pilots Tropical Update

## European Model Next 10 Days Tropical Tracks



Not anticipating tropical development in the Gulf of Mexico over the next 7-10 days.

Currently monitoring for potential development in the Atlantic beyond September 8<sup>th</sup>.



# Houston Pilots Wind Chart



**Example**

Sustained wind 13 Knots  
Gusts 18 Knots  
Wind from the N

WS: 13  
G:18  
N

| Time              | Sat 12pm | Sat 1pm | Sat 2pm | Sat 3pm | Sat 4pm | Sat 5pm | Sat 6pm | Sat 7pm | Sat 8pm | Sat 9pm | Sat 10pm | Sat 11pm | Sat 12am | Sun 1am | Sun 2am | Sun 3am | Sun 4am | Sun 5am | Sun 6am | Sun 7am | Sun 8am | Sun 9am | Sun 10am | Sun 11am | Sun 12pm | Sun 1pm | Sun 2pm | Sun 3pm | Sun 4pm | Sun 5pm | Sun 6pm | Sun 7pm | Sun 8pm | Sun 9pm | Sun 10pm | Sun 11pm |    |
|-------------------|----------|---------|---------|---------|---------|---------|---------|---------|---------|---------|----------|----------|----------|---------|---------|---------|---------|---------|---------|---------|---------|---------|----------|----------|----------|---------|---------|---------|---------|---------|---------|---------|---------|---------|----------|----------|----|
| 610 Bridge        | 4        | 5       | 5       | 6       | 7       | 8       | 9       | 9       | 8       | 7       | 6        | 5        | 4        | 4       | 3       | 3       | 3       | 2       | 2       | 1       | 2       | 2       | 3        | 3        | 3        | 4       | 5       | 7       | 8       | 9       | 10      | 9       | 7       | 6       | 6        |          |    |
|                   | 6        | 7       | 8       | 9       | 10      | 12      | 13      | 11      | 10      | 9       | 8        | 6        | 5        | 4       | 3       | 3       | 2       | 3       | 4       | 4       | 4       | 4       | 4        | 4        | 4        | 4       | 6       | 8       | 10      | 11      | 12      | 13      | 11      | 11      | 9        | 9        |    |
| Kinder 1          | 4        | 5       | 5       | 6       | 7       | 8       | 9       | 9       | 8       | 7       | 6        | 5        | 4        | 4       | 3       | 3       | 3       | 2       | 2       | 1       | 2       | 2       | 3        | 3        | 3        | 4       | 6       | 7       | 8       | 10      | 10      | 9       | 7       | 6       | 5        |          |    |
|                   | 6        | 7       | 8       | 9       | 10      | 12      | 12      | 13      | 11      | 10      | 9        | 8        | 6        | 5       | 5       | 4       | 3       | 2       | 2       | 3       | 4       | 4       | 4        | 4        | 4        | 4       | 6       | 8       | 10      | 11      | 12      | 12      | 11      | 10      | 9        | 8        |    |
| Greens Bayou      | 4        | 5       | 5       | 6       | 8       | 8       | 9       | 9       | 8       | 7       | 6        | 5        | 4        | 4       | 3       | 3       | 3       | 2       | 2       | 2       | 2       | 3       | 3        | 3        | 3        | 4       | 6       | 8       | 9       | 10      | 10      | 9       | 7       | 6       | 5        |          |    |
|                   | 6        | 7       | 8       | 9       | 11      | 12      | 12      | 13      | 12      | 10      | 9        | 8        | 6        | 5       | 4       | 4       | 3       | 2       | 2       | 2       | 3       | 4       | 4        | 4        | 4        | 4       | 6       | 8       | 10      | 11      | 12      | 12      | 11      | 10      | 9        | 8        |    |
| Shell Crude       | 4        | 5       | 5       | 7       | 8       | 9       | 10      | 9       | 8       | 7       | 6        | 5        | 4        | 4       | 4       | 3       | 3       | 2       | 2       | 2       | 2       | 3       | 3        | 3        | 3        | 5       | 7       | 8       | 9       | 10      | 10      | 9       | 7       | 6       | 5        |          |    |
|                   | 6        | 7       | 8       | 10      | 11      | 12      | 12      | 13      | 12      | 10      | 9        | 8        | 6        | 5       | 5       | 4       | 3       | 2       | 2       | 3       | 4       | 4       | 4        | 4        | 4        | 7       | 9       | 11      | 12      | 12      | 11      | 10      | 9       | 8       | 8        |          |    |
| Lynchburg Ferries | 4        | 5       | 6       | 7       | 9       | 10      | 10      | 9       | 8       | 7       | 6        | 5        | 4        | 4       | 4       | 3       | 2       | 2       | 2       | 2       | 3       | 3       | 3        | 3        | 3        | 4       | 5       | 8       | 9       | 10      | 11      | 11      | 9       | 8       | 7        | 6        |    |
|                   | 6        | 7       | 8       | 10      | 12      | 13      | 13      | 12      | 11      | 10      | 8        | 7        | 6        | 5       | 5       | 3       | 3       | 3       | 3       | 3       | 4       | 5       | 5        | 5        | 5        | 7       | 9       | 11      | 12      | 13      | 13      | 12      | 11      | 9       | 8        |          |    |
| Exxon 3           | 5        | 5       | 6       | 9       | 10      | 10      | 11      | 11      | 9       | 8       | 7        | 6        | 5        | 5       | 5       | 4       | 3       | 3       | 3       | 3       | 3       | 3       | 3        | 3        | 4        | 5       | 6       | 9       | 10      | 11      | 12      | 11      | 10      | 8       | 7        | 7        |    |
|                   | 6        | 8       | 9       | 11      | 12      | 13      | 13      | 14      | 12      | 11      | 10       | 8        | 7        | 7       | 6       | 6       | 5       | 4       | 4       | 4       | 4       | 5       | 5        | 5        | 5        | 5       | 8       | 10      | 12      | 13      | 14      | 14      | 12      | 11      | 9        | 9        |    |
| Morgans Point     | 6        | 6       | 7       | 10      | 11      | 11      | 12      | 12      | 10      | 10      | 8        | 7        | 7        | 6       | 6       | 6       | 5       | 4       | 3       | 3       | 4       | 4       | 4        | 4        | 5        | 6       | 8       | 10      | 11      | 12      | 13      | 13      | 11      | 10      | 8        | 8        |    |
|                   | 8        | 9       | 9       | 12      | 13      | 14      | 14      | 13      | 12      | 10      | 9        | 8        | 7        | 7       | 7       | 6       | 5       | 5       | 5       | 5       | 5       | 5       | 5        | 5        | 6        | 7       | 9       | 11      | 13      | 14      | 15      | 15      | 13      | 12      | 10       | 10       |    |
| 75/76             | 6        | 6       | 8       | 11      | 12      | 13      | 14      | 13      | 12      | 11      | 10       | 9        | 8        | 8       | 7       | 7       | 6       | 5       | 5       | 5       | 5       | 5       | 5        | 4        | 4        | 5       | 6       | 8       | 11      | 12      | 14      | 15      | 14      | 13      | 12       | 10       | 10 |
|                   | 9        | 9       | 10      | 12      | 13      | 15      | 15      | 14      | 13      | 11      | 10       | 9        | 8        | 8       | 8       | 7       | 6       | 5       | 5       | 5       | 5       | 5       | 6        | 6        | 6        | 7       | 8       | 10      | 12      | 14      | 15      | 17      | 16      | 14      | 13       | 12       | 11 |
| 63/64             | 6        | 6       | 8       | 10      | 11      | 12      | 13      | 13      | 12      | 11      | 10       | 9        | 8        | 7       | 7       | 6       | 5       | 5       | 5       | 5       | 5       | 5       | 5        | 4        | 4        | 4       | 5       | 7       | 10      | 12      | 13      | 15      | 14      | 13      | 11       | 10       | 10 |
|                   | 9        | 9       | 10      | 11      | 12      | 14      | 15      | 15      | 13      | 12      | 11       | 10       | 9        | 8       | 7       | 7       | 6       | 5       | 5       | 5       | 6       | 6       | 6        | 6        | 6        | 7       | 8       | 10      | 11      | 13      | 14      | 16      | 15      | 14      | 12       | 11       | 11 |
| 51/52             | 6        | 6       | 8       | 9       | 10      | 11      | 12      | 12      | 11      | 10      | 9        | 8        | 8        | 7       | 6       | 6       | 5       | 4       | 4       | 5       | 5       | 5       | 5        | 4        | 4        | 5       | 7       | 9       | 11      | 12      | 13      | 13      | 12      | 10      | 10       | 10       |    |
|                   | 9        | 9       | 9       | 11      | 12      | 12      | 13      | 13      | 12      | 11      | 10       | 9        | 8        | 8       | 7       | 7       | 6       | 5       | 5       | 6       | 6       | 6       | 6        | 6        | 6        | 7       | 9       | 10      | 12      | 13      | 14      | 14      | 13      | 11      | 11       | 11       |    |
| 37/38             | 7        | 7       | 8       | 9       | 10      | 10      | 11      | 11      | 9       | 8       | 8        | 8        | 7        | 6       | 6       | 5       | 4       | 4       | 4       | 4       | 4       | 4       | 5        | 4        | 4        | 5       | 6       | 8       | 10      | 11      | 12      | 12      | 11      | 9       | 9        | 9        |    |
|                   | 9        | 9       | 9       | 10      | 11      | 11      | 12      | 12      | 10      | 9       | 9        | 8        | 8        | 7       | 7       | 6       | 5       | 5       | 5       | 5       | 6       | 6       | 6        | 6        | 6        | 7       | 8       | 9       | 11      | 12      | 13      | 13      | 12      | 10      | 9        | 10       |    |
| 25/26             | 7        | 7       | 8       | 9       | 9       | 9       | 9       | 9       | 8       | 7       | 7        | 7        | 6        | 6       | 5       | 5       | 4       | 4       | 4       | 4       | 4       | 4       | 4        | 4        | 4        | 5       | 6       | 8       | 9       | 10      | 10      | 10      | 9       | 8       | 7        | 8        |    |
|                   | 9        | 9       | 9       | 9       | 10      | 10      | 10      | 10      | 9       | 8       | 8        | 8        | 7        | 7       | 6       | 6       | 5       | 4       | 5       | 5       | 5       | 5       | 5        | 5        | 6        | 7       | 8       | 9       | 10      | 10      | 11      | 11      | 10      | 9       | 8        | 9        |    |
| 11/12             | 7        | 8       | 8       | 8       | 9       | 9       | 9       | 8       | 7       | 7       | 7        | 7        | 6        | 6       | 5       | 4       | 4       | 4       | 4       | 4       | 4       | 4       | 4        | 4        | 5        | 6       | 8       | 8       | 9       | 9       | 9       | 9       | 8       | 8       | 8        | 8        |    |
|                   | 9        | 9       | 9       | 9       | 10      | 10      | 10      | 10      | 9       | 8       | 8        | 8        | 7        | 6       | 6       | 5       | 4       | 5       | 5       | 5       | 5       | 6       | 5        | 5        | 6        | 7       | 8       | 10      | 10      | 10      | 10      | 10      | 9       | 9       | 9        | 9        |    |
| 1 & 2 Bravo       | 8        | 8       | 8       | 8       | 8       | 9       | 9       | 9       | 9       | 8       | 8        | 8        | 8        | 7       | 6       | 6       | 6       | 6       | 5       | 5       | 5       | 5       | 4        | 4        | 5        | 7       | 8       | 9       | 10      | 10      | 10      | 10      | 9       | 9       | 9        | 9        |    |
|                   | 10       | 9       | 9       | 9       | 9       | 10      | 10      | 10      | 9       | 9       | 9        | 9        | 9        | 8       | 7       | 7       | 6       | 6       | 6       | 6       | 6       | 6       | 6        | 6        | 6        | 6       | 7       | 8       | 10      | 11      | 11      | 11      | 10      | 10      | 10       | 10       |    |

**NOTE: This is automated data that may/may not agree with the official BAM thinking that's found on the daily slides. This data should be used as a guide only**

# Houston Pilots: Sat. 9/2/2023



## Forecast Discussion

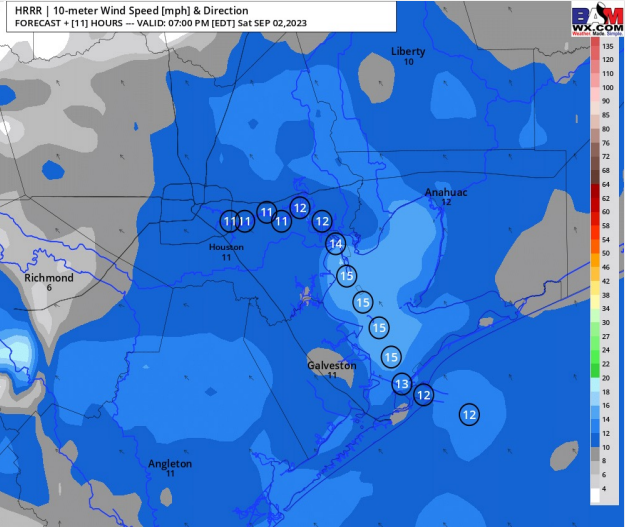
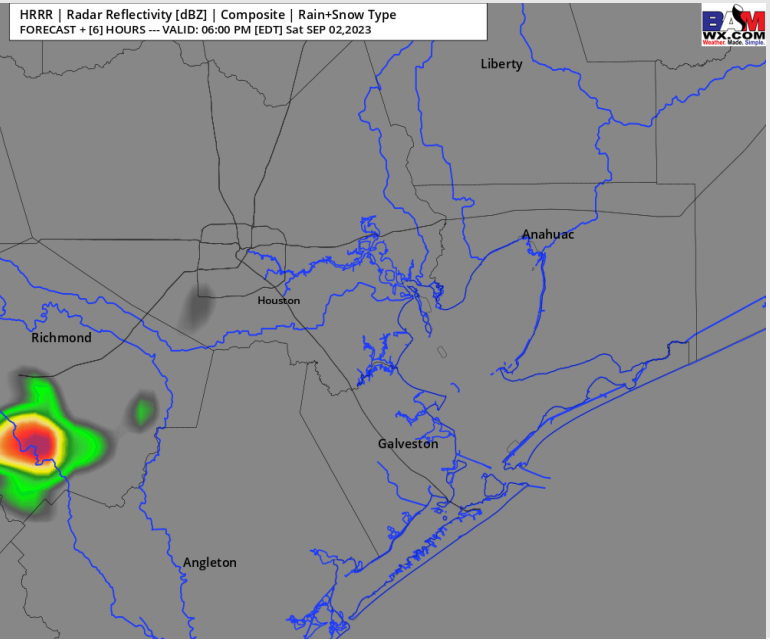
**Precip:** Favoring a low-end risk (10-20%) for hit/miss showers between 2 – 8 PM (best chances N of Morgan’s Point).

**Wind:** Winds out of the NNE will shift out of the SSE by 2 PM. **N of Morgan’s Point:** 1-6 kts until 2 PM, increasing to 5-10 kts for the remainder of the evening. **S of Morgan’s Point:** 10-15 kts for the remainder of the day. **Gusts of 20-25 kts will be possible under the strongest cells today.**

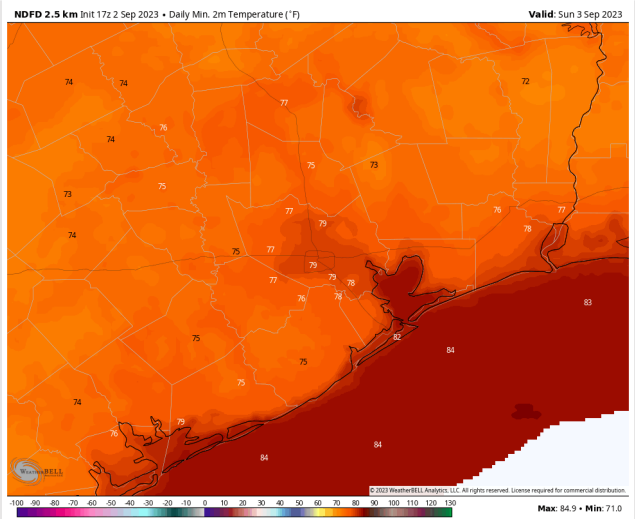
**Low Temps:** **S of Morgan’s Point:** Mid/Low 80s F. **N of Morgan’s Point:** Upper 70s F.

**Visibility:** No visibility issues expected today.

## Precip Image: 5 PM CT



**Wind Speed:**  
6 PM CT



**Low Temps**  
**SUN AM**

# Houston Pilots: Sun. 9/3/2023



## Forecast Discussion

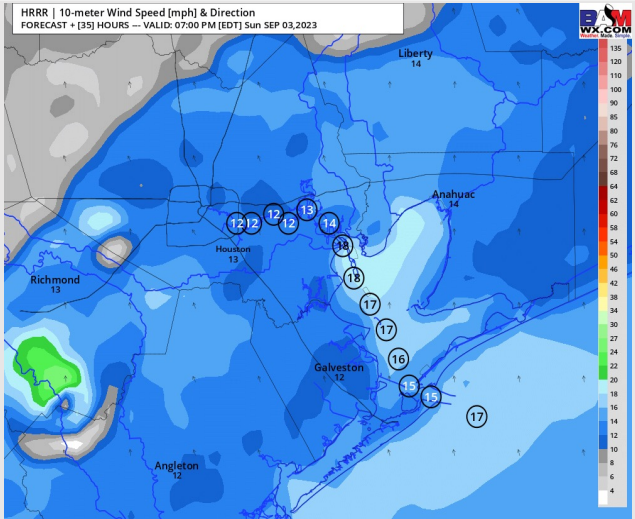
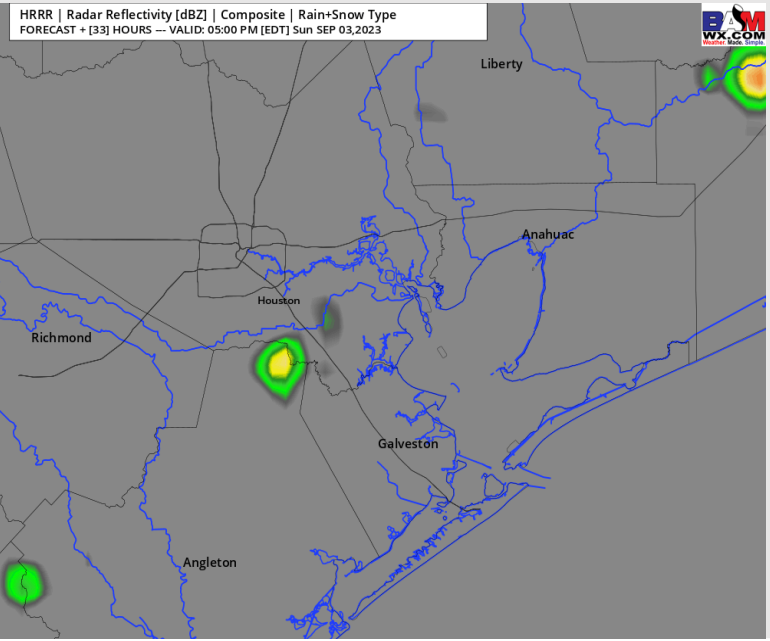
**Precip:** Favoring a 20% chance for scattered showers/storms most of the day SUN from 5 AM – 7 PM. After 7 PM, favoring dry conditions for the rest of the day. Better chances in the AM hours near the Boarding Station.

**Wind:** Winds from the SSE will become variable by 6 AM and will remain that way through 1 PM. After 1 PM, favoring winds to settle back out of the SSE for the rest of the day. **N of Morgan's Point:** Winds will remain at 3-8kts until 4 PM when they increase to 7-12 kts through 9 PM. After 9 PM, winds will decrease down to 2-7 kts for the rest of the day. **S of Morgan's Point:** 3-8 kts through 3 PM. After 3 PM, favoring winds to increase to 11-16 kts for the rest of the day.

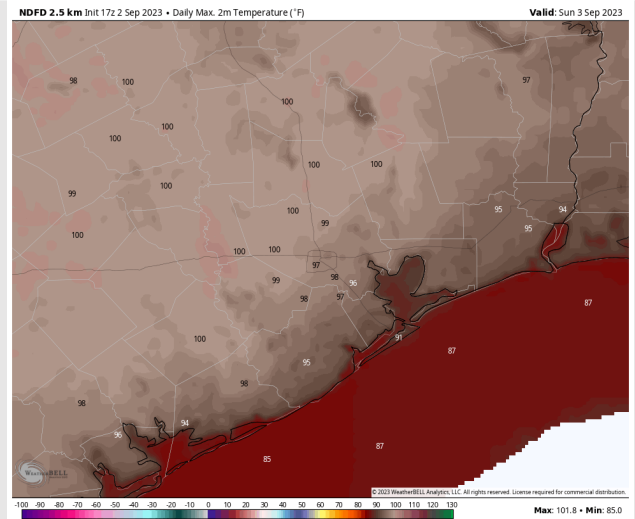
**High Temps:** **S of Morgan's Point:** High 80s / Low 90s F. **N of Morgan's Point:** Upper 90s F.

**Visibility:** No Visibility concerns at this time.

## Precip Image: 4 PM CT



Wind Speed:  
6 PM CT



High Temps  
Sunday

# Houston Pilots: Mon. 9/4/2023



## Forecast Discussion

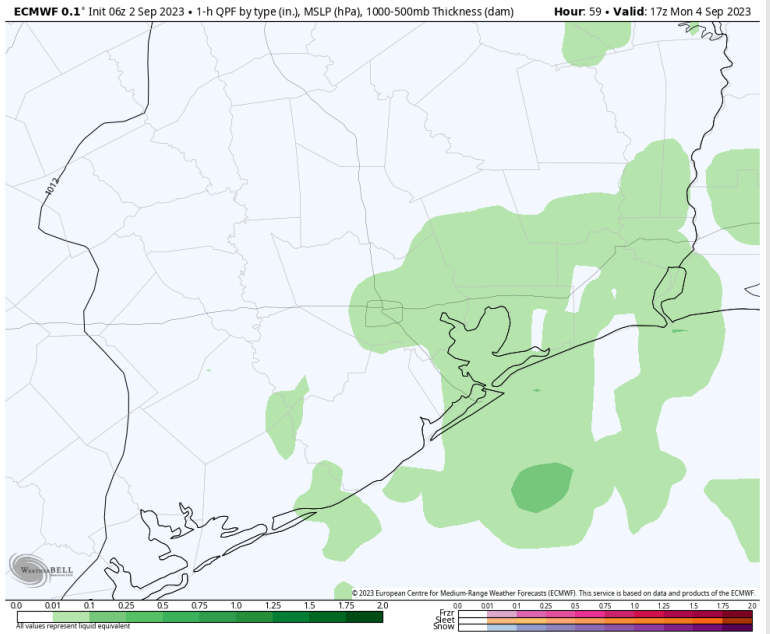
**Precip:** Favoring scattered showers/storms starting at 3 AM and lasting throughout the day Monday. Coverage will become more widespread from 10 AM to 7 PM.

**Wind:** Winds out of the SSW through noon before shifting to the SSE for the PM hours MON. **N of Morgan's Point:** 4-9 kts expected through 1 PM, increasing to 8 - 13 kts after 1 PM. **S of Morgan's Point:** 9-14 kts the majority of the day before a slight increase to 12-17 kts after 4 PM.

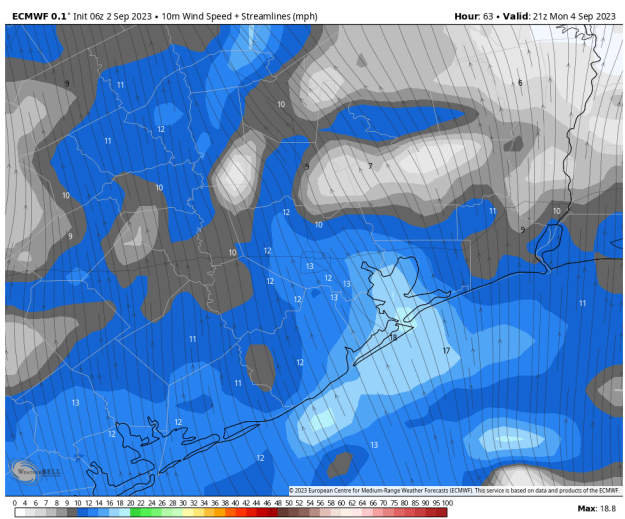
**High Temps:** **S of Morgan's Point:** High 80s / Low 90s F. **N of Morgan's Point:** Mid 90s F.

**Visibility:** Not anticipating any fog issues at this time.

## Precip Image: 12 PM CT



Wind Speed:  
4 PM CT



High Temps  
Monday

