

Houston Pilots Forecast Package



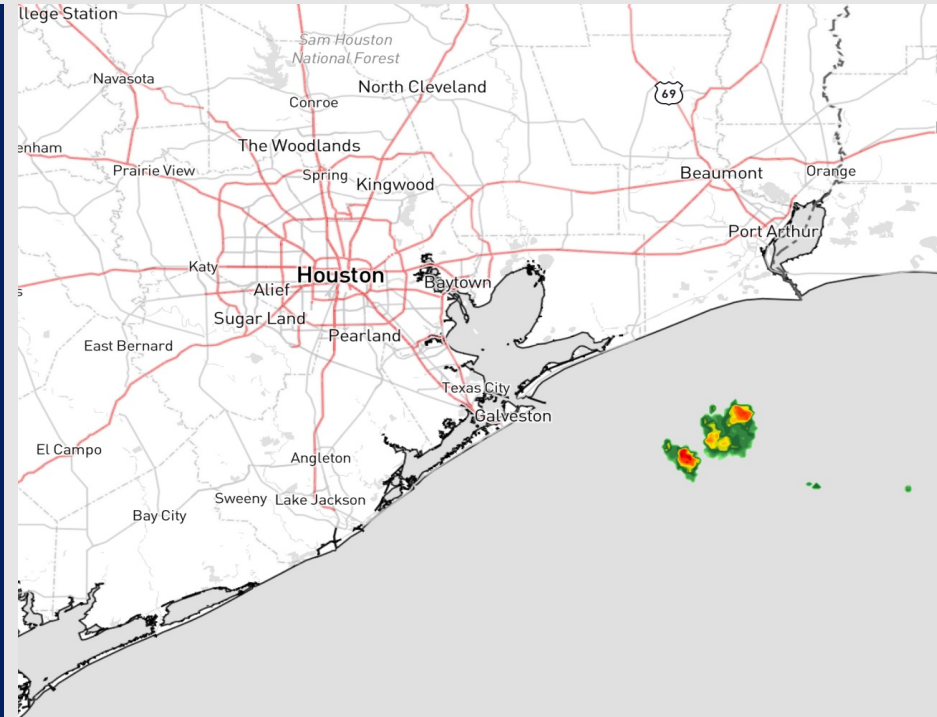
Updated: 5:00 AM CT

Saturday, September 16, 2023

Forecaster: John Kemper

Weather Headlines

- Not anticipating tropical development in the Gulf of Mexico over the next 7-10 days.
- Scattered thunderstorms will be at play for the remainder of the weekend, but overall chances will be fairly low end.
- Outside of t-storm related gusts, winds look generally calm over the next 72 hours with speeds remaining below 12 kts.
- Aside from a very low-end, patchy fog for locations N of Morgan's Point (**See Visibility Slide**) Not anticipating any visibility concerns over the next few days.



Radar/NWS Alerts: 5:00 AM CT



As always, please do not hesitate to reach out to us with any forecast questions via the chat option on the Weather Porthole or our on-call number, **(317)-560-8122** press 1 for forecast questions.

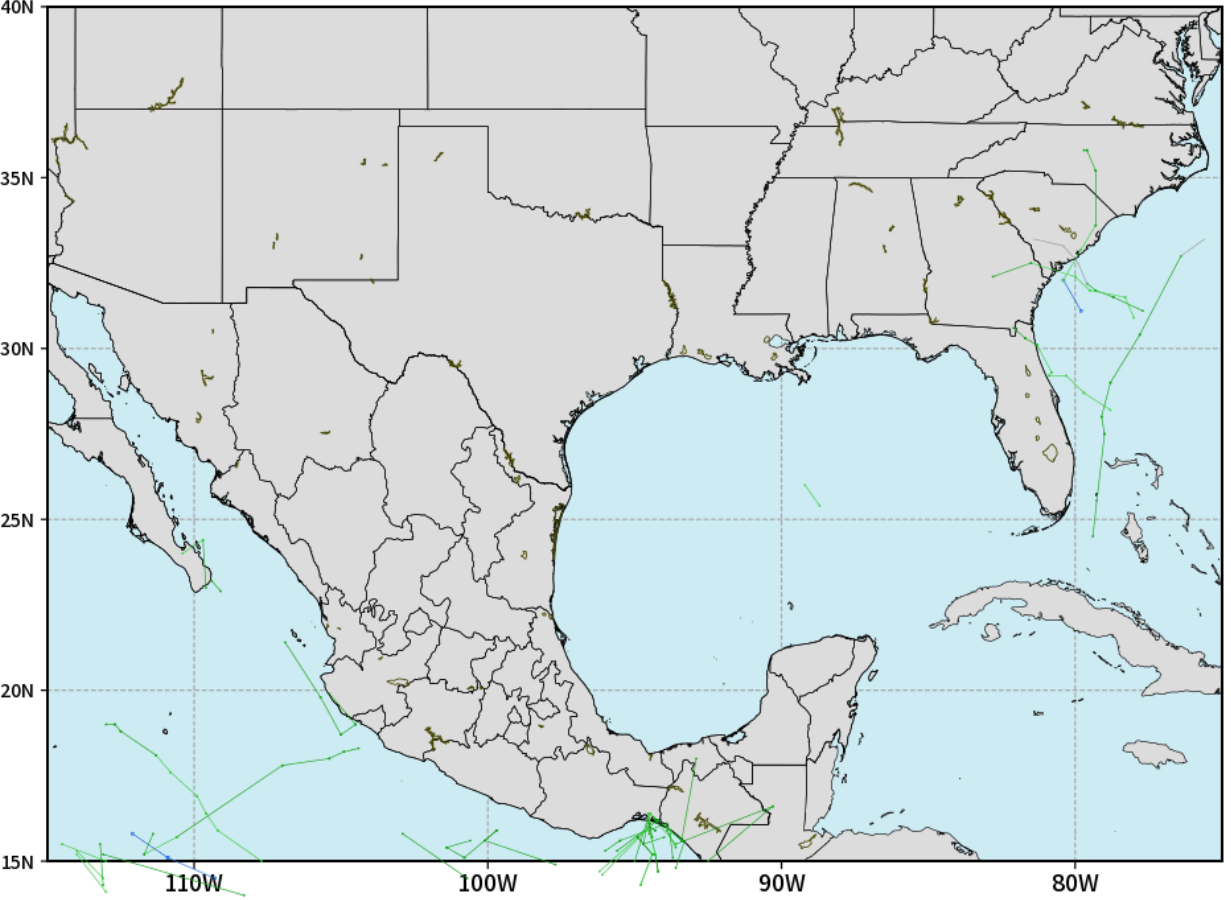
Houston Pilots Tropical Update



European Model Next 10 Days Tropical Tracks

ECMWF GULF EPS Cyclone Locations --> Next [10-days]
INIT: 00Z16SEP2023 --> UNTIL 00Z26SEP2023

- o-o ENSEMBLE MEAN
- o-o 1000 - 1010 hPa
- o-o 980 - 999 hPa
- o-o 960 - 979 hPa
- o-o 950 - 959 hPa
- o-o < 950 hPa



weathermodels.com

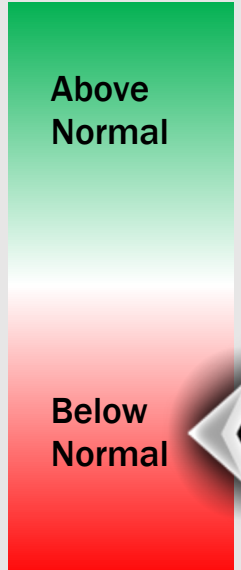
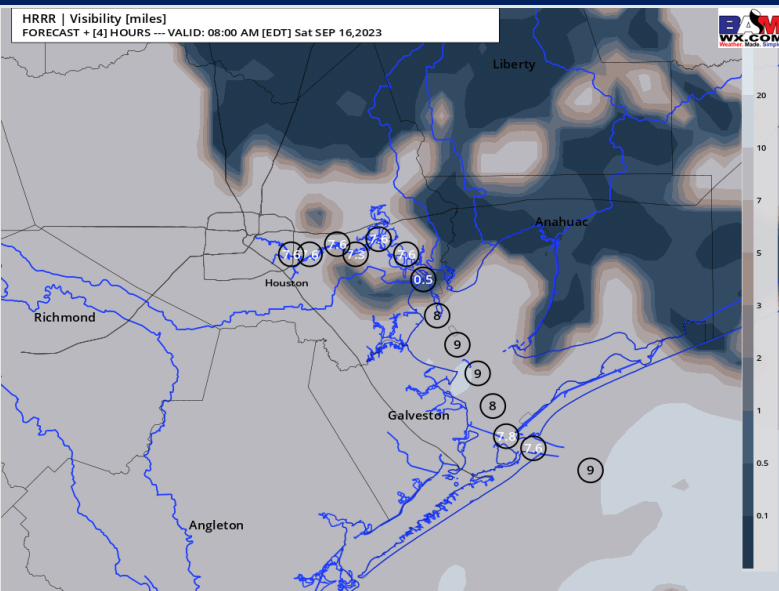
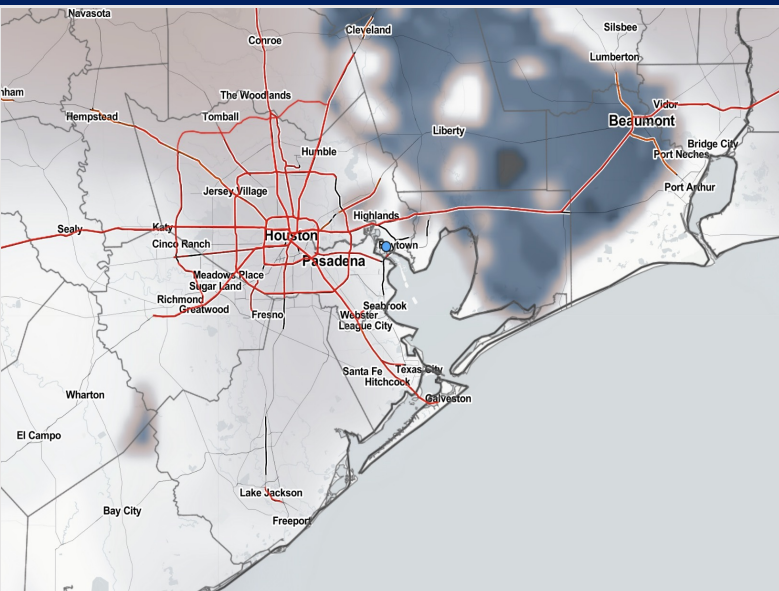
Not anticipating tropical development in the Gulf of Mexico over the next 7-10 days.

Houston Pilots Visibility Report



CURRENT VISIBILITY (5AM-CT) 7 AM CT SAT VISIBILITY

Confidence



TIMEFRAME DISCUSSED	THREAT
CURRENT - 8 AM SAT	LOW

- Patchy Radiation Fog is ongoing across locations E of the Bay area. Localized patchy fog risks will only include locations N of Morgan's Point.
- Visibilities of 2-4 miles can't be ruled out, but duration of impacts will likely be less than one hour and fall between the time frame of 6:30AM-CT through 8:00AM-CT.
- Low-End Fog risk expected to burn off quickly by sunrise, and not favoring any concerns after 8:00AM-CT
- At the present time, not seeing any risks for the remainder of the weekend.

Houston Pilots Visibility Chart (miles)



Time	Sat 4am	Sat 5am	Sat 6am	Sat 7am	Sat 8am	Sat 9am	Sat 10am	Sat 11am	Sat 12pm	Sat 1pm	Sat 2pm	Sat 3pm	Sat 4pm	Sat 5pm	Sat 6pm	Sat 7pm	Sat 8pm	Sat 9pm	Sat 10pm	Sat 11pm	Sun 12am	Sun 1am	Sun 2am	Sun 3am	Sun 4am	Sun 5am	Sun 6am	Sun 7am	Sun 8am	Sun 9am	Sun 10am	Sun 11am	Sun 12pm	Sun 1pm	Sun 2pm	Sun 3pm			
610 Bridge	10	9	9	7	7	10	10	10	10	10	10	10	10	10	10	10	10	10	10	10	10	10	10	10	10	10	10	10	6	10	10	10	10	10	10	10	10		
Kinder 1	10	9	9	7	7	10	10	10	10	10	10	10	10	10	10	10	10	10	10	10	10	10	10	10	10	10	10	10	7	10	10	10	10	10	10	10	10		
Greens Bayou	10	9	9	7	7	10	10	10	10	10	10	10	10	10	10	10	10	10	10	10	10	10	10	10	10	10	10	10	8	10	10	10	10	10	10	10	10		
Shell Crude	10	9	9	7	7	10	10	10	10	10	10	10	10	10	10	10	10	10	10	10	10	10	10	10	10	10	10	10	8	10	10	10	10	10	10	10	10		
Lynchburg Ferries	10	8	9	7	6	10	10	10	10	10	10	10	10	10	10	10	10	10	10	10	10	10	10	10	10	10	10	10	8	10	10	10	10	10	10	10	10		
Exxon 3	10	10	10	10	8	10	10	10	10	10	10	10	10	10	10	10	10	10	10	10	10	10	10	10	10	10	10	10	9	8	10	10	10	10	10	10	10		
Morgans Point	10	10	10	10	10	10	10	10	10	10	10	10	10	10	10	10	10	10	10	10	10	10	10	10	10	10	10	10	9	8	10	10	10	10	10	10	10		
75/76	10	10	10	10	10	10	10	10	10	10	10	10	10	10	10	10	10	10	10	10	10	10	10	10	10	10	10	10	8	10	10	10	10	10	10	10	10		
63/64	10	10	10	10	10	10	10	10	10	10	10	10	10	10	10	10	10	10	10	10	10	10	10	10	10	10	10	10	10	10	10	10	10	10	10	10	10	10	
51/52	10	10	10	10	10	10	10	10	10	10	10	10	10	10	10	10	10	10	10	10	10	10	10	10	10	10	10	10	10	10	10	10	10	10	10	10	10	10	
37/38	10	10	10	10	10	10	10	10	10	10	10	10	10	10	10	10	10	10	10	10	10	10	10	10	10	10	10	10	10	10	10	10	10	10	10	10	10	10	
25/26	10	10	10	10	10	10	10	10	10	10	10	10	10	10	10	10	10	10	10	10	10	10	10	10	10	10	10	10	10	10	10	10	10	10	10	10	10	10	10
11/12	10	10	10	10	10	10	10	10	10	10	10	10	10	10	10	10	10	10	10	10	10	10	10	10	10	10	10	10	10	10	10	10	10	10	10	10	10	10	
1 & 2 Bravo	10	10	10	10	10	10	10	10	10	10	10	10	10	10	10	10	10	10	10	10	10	10	10	10	10	10	10	10	10	10	10	10	10	10	10	10	10	10	

NOTE: This is automated data that may/may not agree with the official BAM thinking that's found on the daily slides or special visibility report slides. This data should be used as a guide only

Houston Pilots Wind Chart



Forecast Confidence



Example

Sustained wind 13 Knots
Gusts 18 Knots
Wind from the N

WS: 13
G:18
N

Time Knots	Sat 4am	Sat 5am	Sat 6am	Sat 7am	Sat 8am	Sat 9am	Sat 10am	Sat 11am	Sat 12pm	Sat 1pm	Sat 2pm	Sat 3pm	Sat 4pm	Sat 5pm	Sat 6pm	Sat 7pm	Sat 8pm	Sat 9pm	Sat 10pm	Sat 11pm	Sun 12am	Sun 1am	Sun 2am	Sun 3am	Sun 4am	Sun 5am	Sun 6am	Sun 7am	Sun 8am	Sun 9am	Sun 10am	Sun 11am	Sun 12pm	Sun 1pm	Sun 2pm	Sun 3pm	
610 Bridge	2	2	2	2	2	3	4	4	4	3	4	6	5	5	5	4	4	3	2	2	2	2	2	2	3	2	2	2	2	3	4	5	5	5	6	6	6
	3	2	3	3	3	4	5	5	5	5	7	9	8	8	8	7	5	4	4	4	3	3	4	4	4	3	4	4	4	6	7	7	8	8	9	9	
	NE	NE	NNE	NNE	NNE	NE	NE	NE	NNE	ENE	SE	N	NNE	NNE	NNE	NE	ENE	W	WNW	WNW	WNW	WNW	NW	NW	NNW	NNW	NNW	SSE	N	NNE	NNE	NNE	NNE	NNE	NNE	NNE	
Kinder 1	2	2	2	2	2	3	4	4	4	3	4	6	5	5	5	4	4	3	2	2	2	2	2	2	3	2	2	2	3	4	5	5	5	6	6	6	
	3	2	3	3	3	4	5	5	5	5	7	9	8	8	8	7	5	4	4	3	3	3	3	4	4	3	4	4	6	7	7	7	8	9	9		
	NE	NNE	NNE	NNE	NNE	NE	NE	NE	NNE	NNE	NE	N	NNE	NNE	NNE	NE	ESE	W	WNW	WNW	WNW	WNW	NW	NW	NNW	NNW	NNW	E	N	NNE	NNE	NNE	NNE	NNE	NNE	NNE	
Greens Bayou	2	2	2	2	2	3	4	4	4	3	4	5	5	5	5	4	3	3	2	2	2	2	2	2	3	2	2	2	3	4	5	5	5	6	6	6	
	3	2	2	3	3	4	5	4	4	5	6	8	8	8	8	7	5	4	3	3	3	3	3	4	4	4	4	4	6	7	7	7	8	8	9		
	NE	NNE	NNE	NNE	NNE	NE	NE	NE	NNE	N	N	N	NNE	NNE	NNE	NE	ESE	WNW	NW	NW	WNW	NW	NW	NW	NNW	NNW	NNW	N	W	ENE	N	NNE	NNE	NNE	NNE	NNE	
Shell Crude	2	2	2	2	2	3	4	4	4	3	4	5	6	5	5	5	3	3	2	2	2	2	2	2	3	2	2	3	3	4	5	5	5	6	6	6	
	3	2	3	3	4	4	5	4	4	5	6	8	8	8	7	7	5	4	3	3	3	3	3	4	4	4	4	4	6	7	7	7	8	8	9		
	NNE	NNE	NNE	NNE	NNE	NNE	NE	NE	NNE	N	NNE	N	NNE	NNE	NNE	NE	SSE	NW	NW	NW	WNW	NW	NW	NW	NNW	NNW	N	W	ENE	N	NNE	NNE	NNE	NNE	NNE	NNE	
Lynchburg Ferries	3	2	2	2	3	4	4	4	4	3	5	6	6	5	5	5	4	3	3	2	2	3	3	3	3	3	3	4	5	6	6	6	6	6	6		
	4	3	3	4	4	4	5	5	5	5	6	8	8	8	7	7	5	4	4	4	3	4	4	4	4	5	4	4	6	7	7	7	8	9	9		
	NNE	NNE	NNE	NNE	NNE	NE	NE	NE	NNE	ENE	E	NNE	NNE	NNE	NNE	E	NNW	NNW	NNW	WNW	NNW	NNW	NNW	NNW	NNW	NNW	ESE	N	NNE	NNE	NNE	NNE	NNE	NNE	NNE	NNE	
Exxon 3	3	3	3	3	3	4	4	4	4	4	5	6	6	6	5	5	4	3	3	3	3	3	3	3	4	4	4	4	5	6	6	6	6	6	6		
	4	4	4	4	4	5	5	5	5	5	7	8	9	8	7	7	5	5	4	4	4	4	4	5	5	5	5	5	6	8	7	7	8	8	10		
	NNE	NNE	NNE	NNE	NNE	NE	NE	NE	NNE	NE	SSE	NNE	NNE	NNE	NE	ESE	SSE	NW	NW	NNW	NNW	NNW	NNW	NNW	NNW	NNW	E	N	NNE	NNE	NNE	NNE	NNE	NNE	NNE		
Morgans Point	4	4	4	4	4	5	5	5	4	4	5	6	6	6	6	5	5	4	4	4	4	4	5	5	5	5	5	5	6	7	6	6	6	6	7		
	5	5	5	5	5	6	6	5	5	6	7	8	9	8	8	6	6	5	5	5	5	5	6	6	6	6	6	7	7	8	7	8	8	9	10		
	NNE	NNE	NNE	NNE	NNE	NE	NE	NE	NNE	NNE	E	NNE	ENE	NE	ENE	SE	SW	WNW	NW	NW	NW	NW	NW	NNW	NNW	N	E	N	NNE	NNE	NNE	NNE	NNE	NNE	NNE		
75/76	6	6	6	6	6	6	6	5	4	4	5	6	7	7	8	8	7	6	6	6	6	6	6	6	7	7	7	7	8	8	8	7	6	6	7		
	7	6	7	6	7	7	7	6	6	7	8	9	9	9	8	7	6	6	6	6	6	7	7	7	8	8	8	9	9	9	8	8	9	10			
	NNE	NNE	NNE	NNE	NNE	NE	NE	NE	NE	ENE	NE	ENE	ENE	ENE	E	ESE	SW	W	WNW	WNW	NW	NW	NNW	NNW	NNW	N	NE	N	NNE	NNE	NNE	NNE	NNE	NNE	NNE		
63/64	6	6	6	6	7	7	7	6	4	4	5	6	6	6	7	8	7	6	6	6	6	7	7	7	7	8	8	8	9	9	8	7	6	6	7		
	7	7	7	7	7	8	7	7	6	7	7	8	9	8	8	9	8	7	6	6	6	7	7	8	8	8	9	9	10	9	8	8	9	9	10		
	NE	NNE	NNE	NNE	NNE	NE	NE	NE	NNE	NE	NE	ESE	ENE	ESE	SSE	SW	W	WNW	WNW	NW	NW	NNW	NNW	NNW	NNW	NNE	N	NNE	NNE	NNE	NNE	NNE	NNE	NNE	ENE	NE	
51/52	6	6	6	6	6	7	6	5	4	4	5	6	7	8	8	7	6	5	6	6	6	6	7	7	7	7	8	8	9	9	8	7	6	6	6		
	7	6	7	7	7	8	7	7	6	7	7	8	8	8	8	7	6	6	6	6	6	7	7	7	8	8	9	9	10	9	8	8	9	9	9		
	NE	NNE	NNE	NNE	NNE	NE	NE	NE	NNE	NE	NE	ESE	S	ESE	SSE	S	SW	WSW	W	WNW	NW	NW	NNW	NNW	N	ENE	N	NNE	NNE	NNE	NNE	NNE	NNE	NNE	ESE	ENE	
37/38	5	5	6	6	6	7	7	6	5	5	4	5	5	5	6	7	6	5	5	5	5	6	6	6	6	7	7	8	8	9	8	7	6	6	6		
	6	6	6	6	6	7	8	7	7	7	7	7	8	8	7	7	6	5	6	6	6	7	7	7	8	9	9	9	10	9	9	9	9	8	8		
	NE	NNE	NNE	NNE	NNE	NE	NE	NE	NNE	NE	NE	S	SSW	SSE	S	SE	SSW	SW	WNW	WNW	NW	NW	NNW	NNW	NNW	SSW	N	NNE	NNE	NNE	NNE	NNE	NNE	ENE	NE		
25/26	4	4	5	5	6	7	7	6	5	5	5	5	5	5	6	5	4	4	5	5	5	5	5	5	6	6	6	7	7	8	8	8	8	7	6		
	5	5	6	6	7	7	7	7	7	7	6	7	7	7	6	6	5	5	5	5	5	6	6	6	6	7	8	8	9	9	8	8	8	8	8		
	NE	NNE	NNE	NNE	NNE	NE	NE	NE	NNE	NNE	NNE	SSW	WSW	WSW	S	SE	SSW	SW	WNW	WNW	NW	NW	NNW	NNW	NNW	WNW	N	NNE	NNE	NNE	NNE	NNE	NNE	NNE	NNE		
11/12	4	5	5	6	6	7	6	5	5	5	5	5	5	5	6	6	5	5	5	5	5	6	6	6	6	7	7	7	8	8	8	8	8	7	7		
	5	5	6	6	7	8	7	7	6	7	6	7	7	7	6	6	6	5	5	6	6	6	7	7	7	8	8	9	9	9	9	9	9	9	8		
	NE	NE	NNE	NNE	NNE	NE	NE	NE	NNE	NNE	W	NNW	NW	WSW	SW	SW	SSW	WNW	WNW	NW	NW	NNW	NNW	NNW	NNW	WNW	N	NNE	NNE	NNE	NNE	NNE	NNE	NNE	NNE		
1 & 2 Bravo	5	5	6	7	8	8	8	7	5	5	4	5	6	6	6	7	6	6	6	6	7	7	7	8	8	8	9	9	9	9	8	7	6	6	6		
	6	6	7	7	8	8	8	7	6	6	6	6	7	7	7	7	6	6	6	7	7	7	8	8	9	9	10	10	11	10	9	9	9	8	8		
	NE	NE	NNE	NNE	NNE	NE	NE	NE	NE	NE	NE	WSW	NNW	WSW	SW	SSW	SW	SSW	W	NW	NW	NW	NNW	NNW	NNW	NNW	N	NNE	NNE	NNE	NNE	NNE	NE	NE	ENE		

NOTE: This is automated data that may/may not agree with the official BAM thinking that's found on the daily slides. This data should be used as a guide only

Houston Pilots: Sat. 9/16/2023



Forecast Discussion

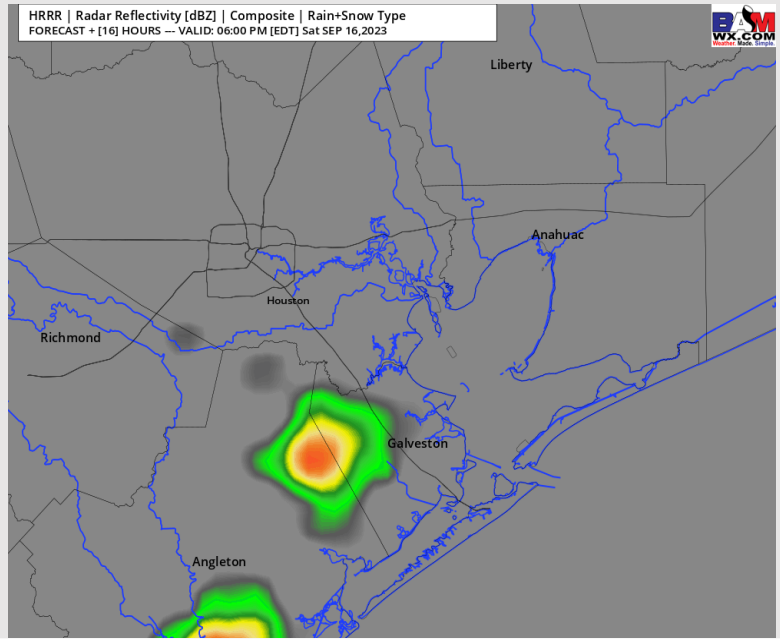
Precip: Most of any light precip will be confined S of 61/62 Station through 4 PM (10%). After 4 PM, hit/miss shower/storm chances (30%) will be at play for all stations lasting through 9 PM.

Wind: Winds will be light again on Saturday with generally north winds wavering between NW to NE. N of Morgan's Point: 1 - 5 kts throughout the day. S of Morgan's Point: 2 - 7 kts throughout the day, becoming 4-9kts after 7PM and for the remainder of the evening.

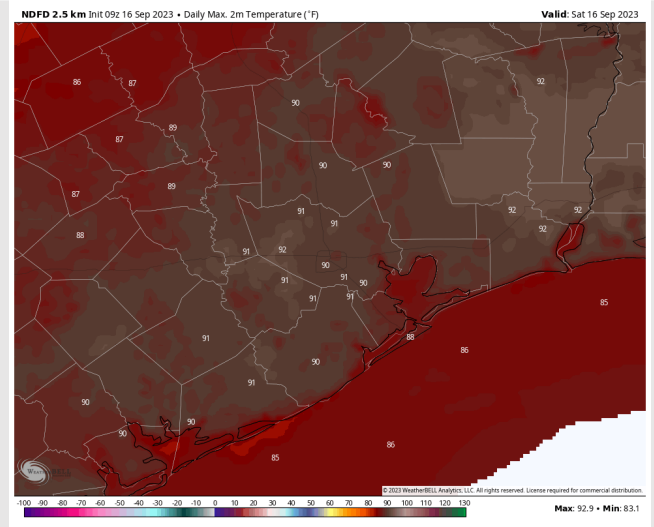
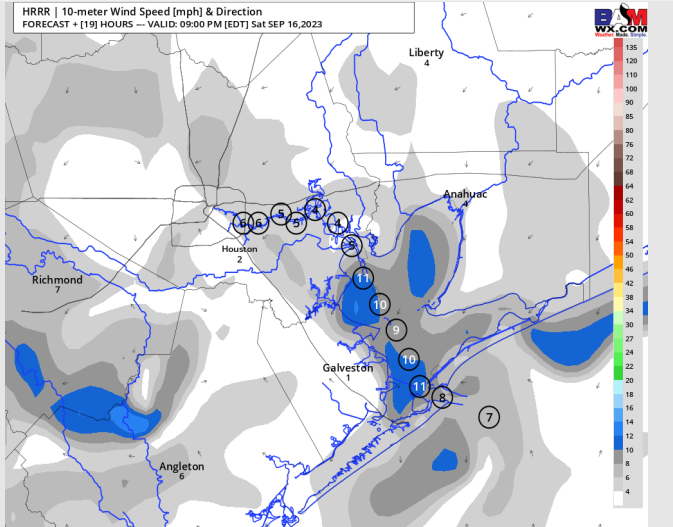
High Temps: S of Morgan's Point: Mid to upper 80s F. N of Morgan's Point: Lower 90s F.

Visibility: See visibility slide for latest thoughts on low-end, patchy fog risk for stations N of Morgan's Point this AM

Precip Image: 5 PM CT



Wind Speed:
8 PM CT



High Temps
Saturday

Houston Pilots: Sun. 9/17/2023

Forecast Discussion

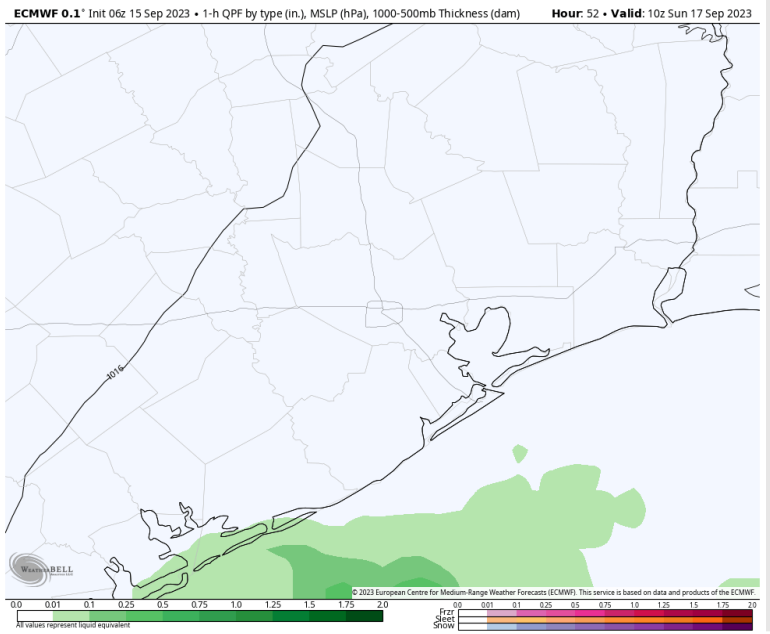
Precip: Isolated shower/drizzle chances (20%) will be in play for the Boarding Station between 4- 9 AM before dry conditions move in again. Favoring dry conditions for all other stations throughout the day.

Wind: Winds out of the NW will shift clockwise out of the NNE by 12 PM and remain from the N to NNE for the rest of the PM. **N of Morgan's Point:** 2 - 6 kts in the early AM will slightly increase to 4 - 9 kts from 11 AM - 7 PM. After 7, winds revert to 2 -6 kts. **S of Morgan's Point:** 5-10 kts through in the early AM. Towards sunrise winds will increase to 6 - 11 kts. Winds will then decrease to 3-8 kts at 1 PM and remain as such for the rest of the day.

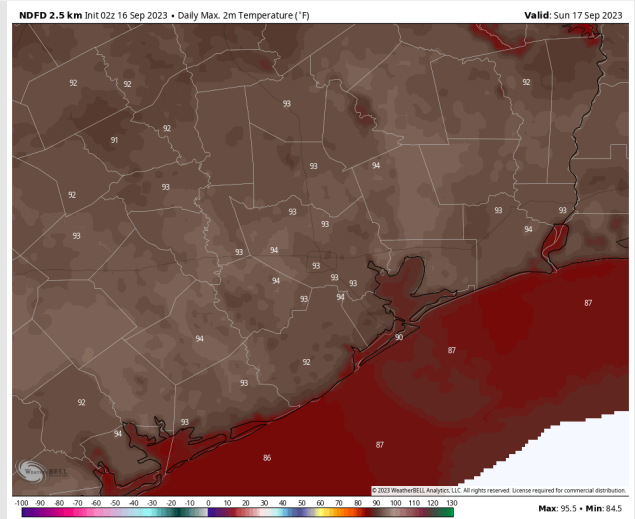
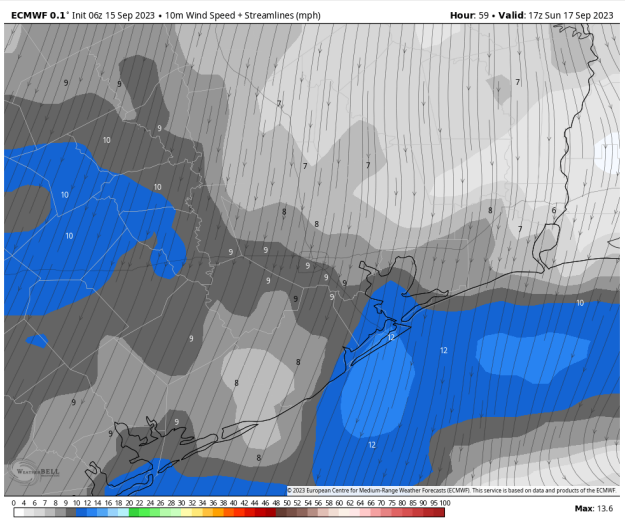
High Temps: **S of Morgan's Point:** Mid to upper 80s F. **N of Morgan's Point:** Lower to mid 90s F.

Visibility: No visibility concerns at this time.

Precip Image: 5 AM CT



Wind Speed:
12 PM CT



High Temps
Sunday

Houston Pilots: Mon. 9/18/2023



Forecast Discussion

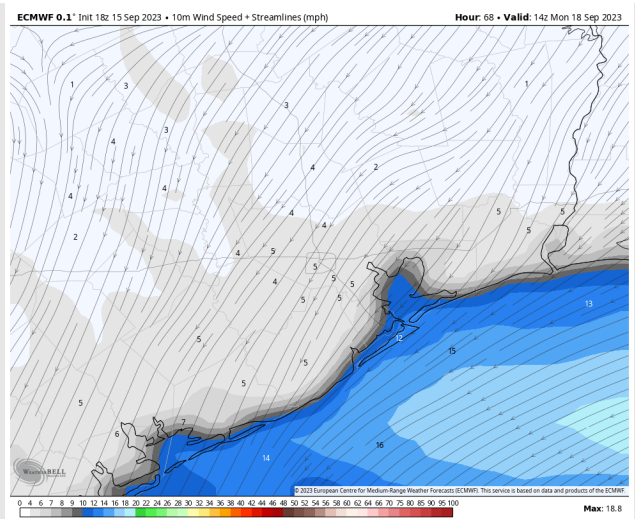
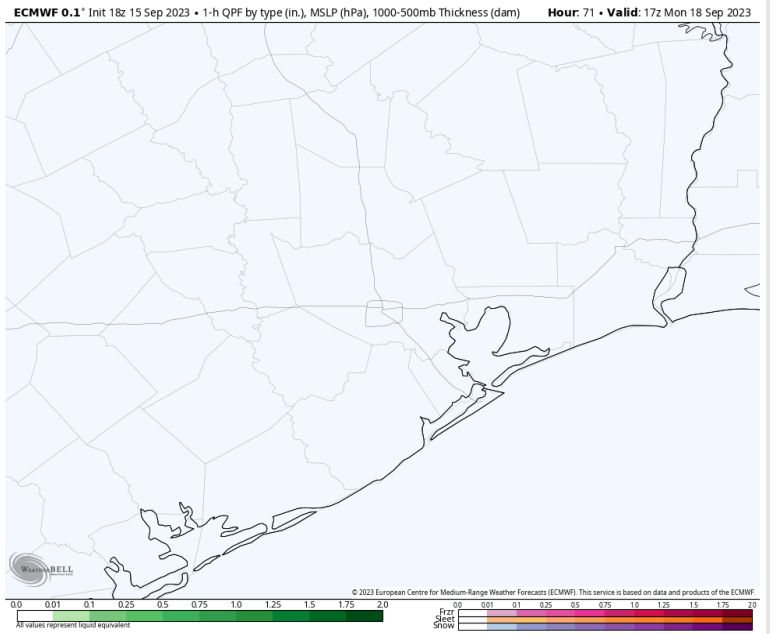
Precip: Favoring dry conditions throughout the day Monday.

Wind: Winds out of the NNE will shift counter-clockwise out of the SE by 5 PM. **N of Morgan's Point:** 2 - 7 kts throughout the entire day. **S of Morgan's Point:** winds will increase to 7-12 by 3 AM and remain at that clip until 7 PM, decreasing to 2-8 kts at that time.

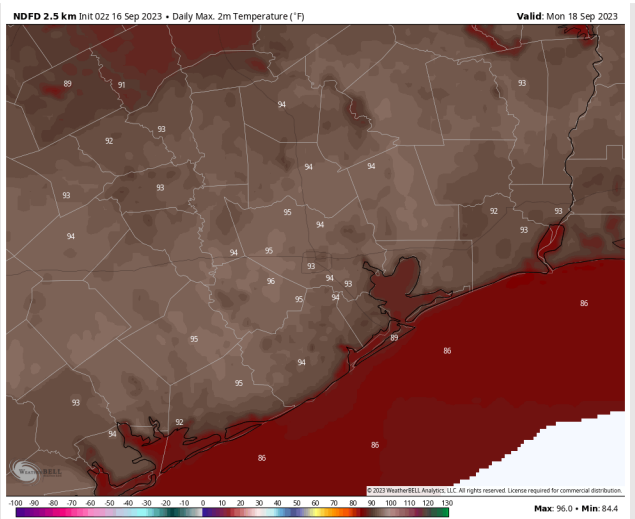
High Temps: **S of Morgan's Point:** Mid/Upper 80s F. **N of Morgan's Point:** Low/Mid 90s F.

Visibility: Not anticipating any fog issues at this time.

Precip Image: 4 PM CT

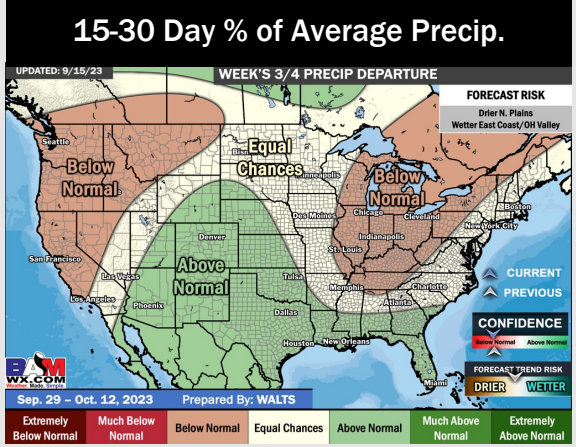
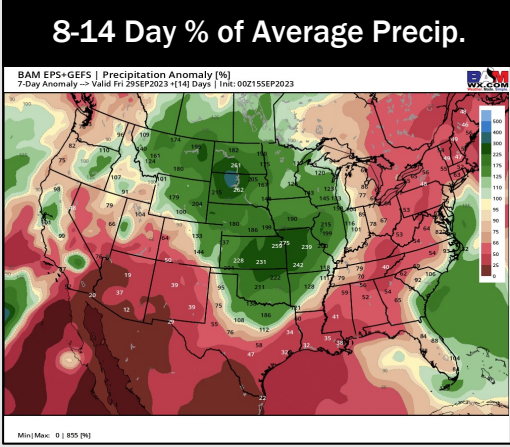
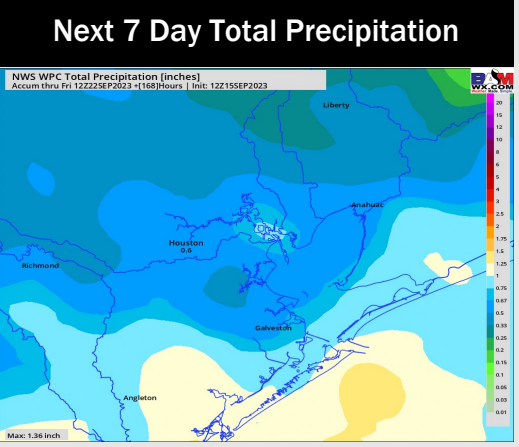
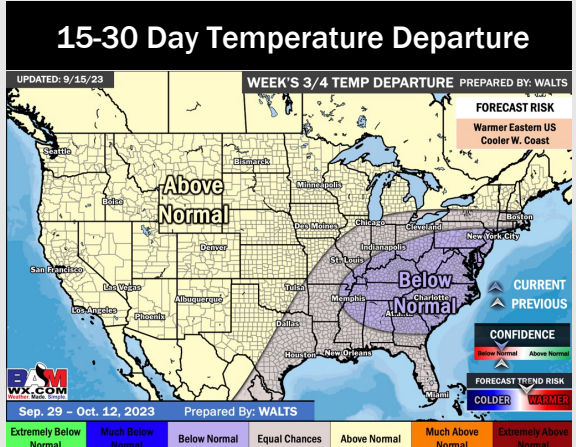
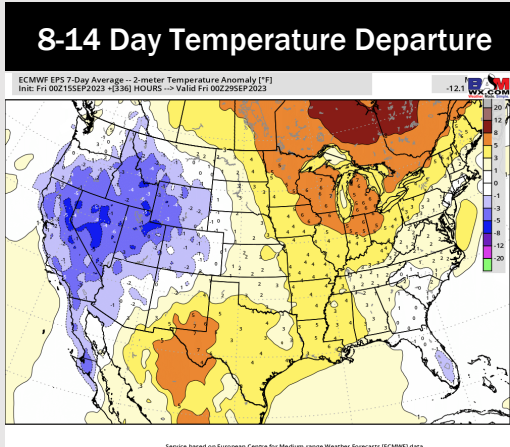
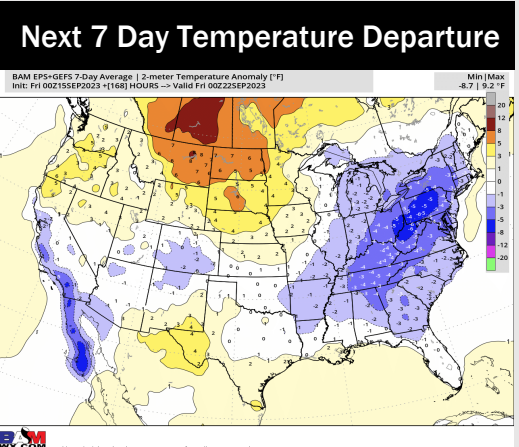


Wind Speed:
9 AM CT



High Temps
Monday

Houston Pilots: 9/16/23



- Rain chances will be at play everyday over the next few days before coverage quiets down towards Sunday afternoon getting into Monday. Rain chances look to return Tuesday PM. Expecting temperatures to continue to remain slightly above normal.
- Expecting below normal precipitation chances and above normal temperatures for the week 2 timeframe.
- Near normal temperatures and above normal chances for precipitation are favored in the weeks 3/4 timeframe.