

Houston Pilots Forecast Package



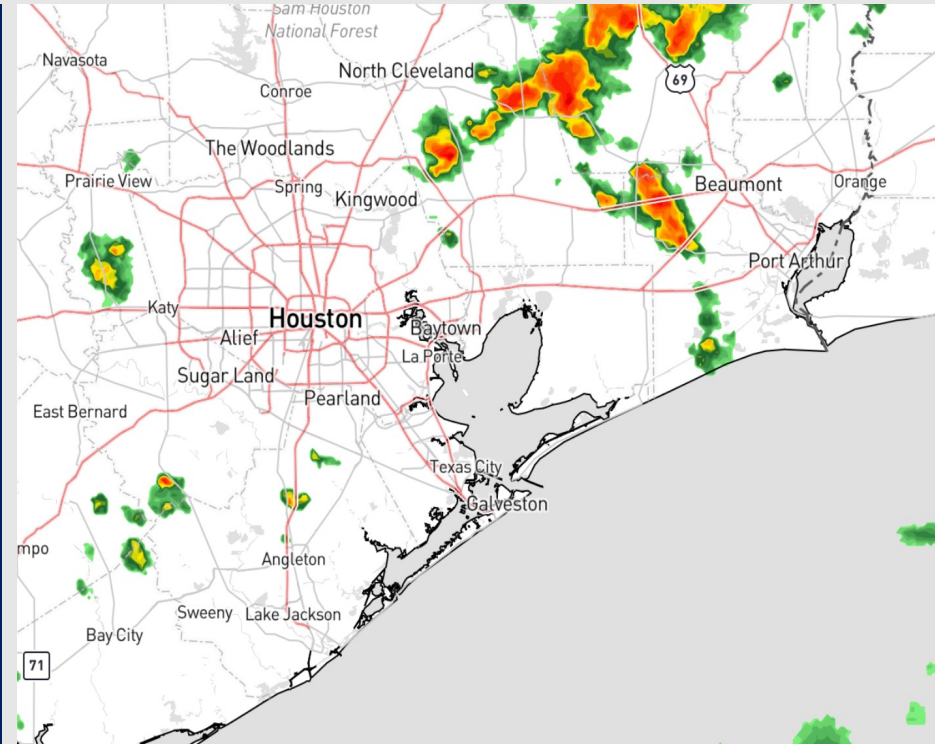
Updated: 12:50 PM CT

Friday, September 15, 2023

Forecaster: Tyler Riggles

Weather Headlines

- Not anticipating tropical development in the Gulf of Mexico over the next 7-10 days. Monitoring Hurricane Lee as it approaches the East coast. This storm will not impact the Gulf.
- Scattered thunderstorms will be at play today and into the first half of the weekend.
- Outside of t-storm related gusts, winds look generally calm over the next 72 hours with speeds remaining below 12 kts.
- Not anticipating any visibility concerns over the next few days.



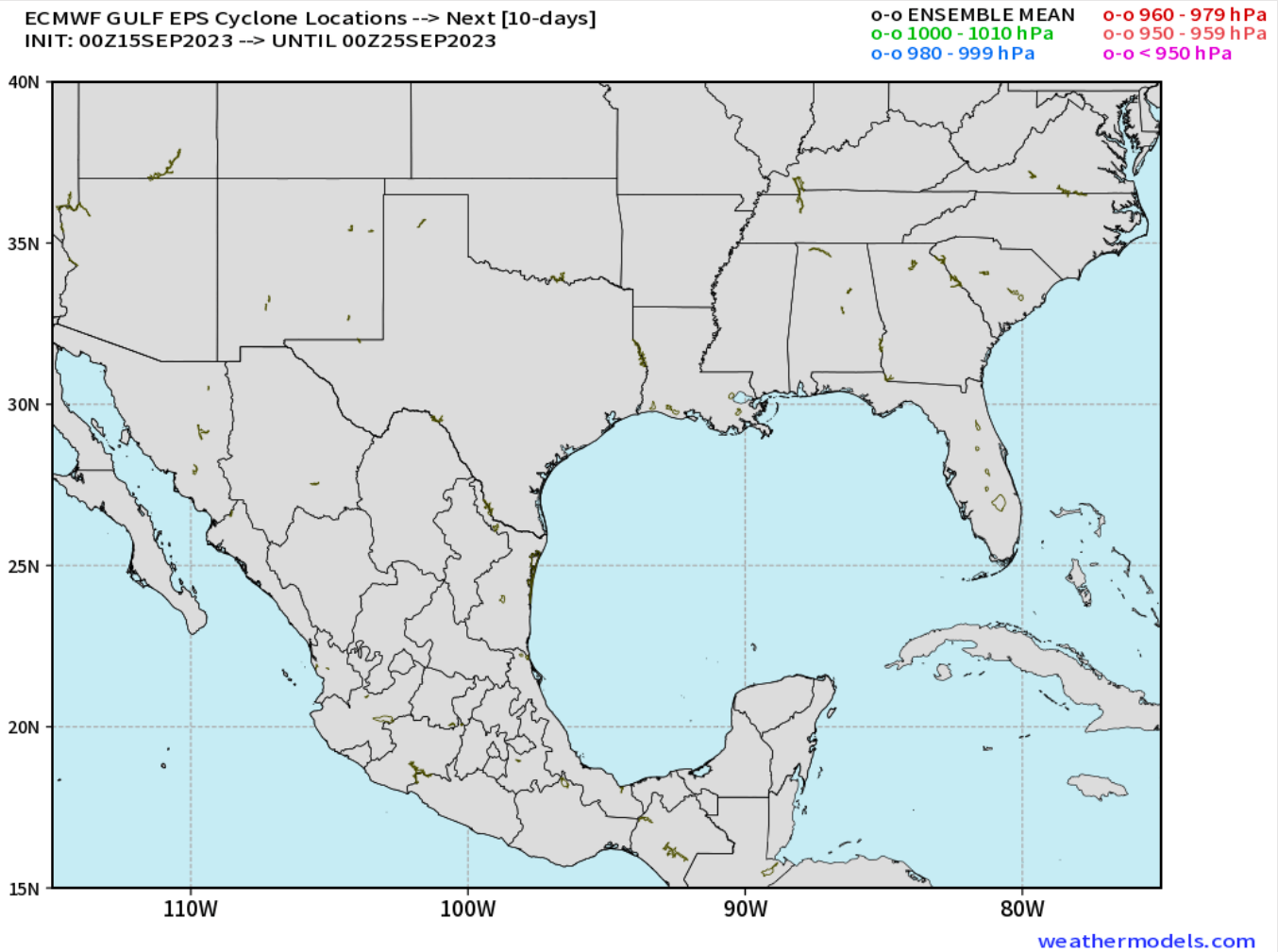
Radar/NWS Alerts: 12:40 PM CT



As always, please do not hesitate to reach out to us with any forecast questions via the chat option on the Weather Porthole or our on-call number, **(317)-560-8122** press 1 for forecast questions.

Houston Pilots Tropical Update

European Model Next 10 Days Tropical Tracks



Not anticipating tropical development in the Gulf of Mexico over the next 7-10 days.

Currently monitoring Hurricane Lee, which will impact parts of New England Saturday.

Houston Pilots Visibility Chart (miles)



Forecast Confidence



Time	Fri 12pm	Fri 1pm	Fri 2pm	Fri 3pm	Fri 4pm	Fri 5pm	Fri 6pm	Fri 7pm	Fri 8pm	Fri 9pm	Fri 10pm	Fri 11pm	Sat 12am	Sat 1am	Sat 2am	Sat 3am	Sat 4am	Sat 5am	Sat 6am	Sat 7am	Sat 8am	Sat 9am	Sat 10am	Sat 11am	Sat 12pm	Sat 1pm	Sat 2pm	Sat 3pm	Sat 4pm	Sat 5pm	Sat 6pm	Sat 7pm	Sat 8pm	Sat 9pm	Sat 10pm	Sat 11pm		
610 Bridge	10	10	10	10	10	10	10	10	10	10	10	10	10	10	10	10	10	10	10	6	8	10	10	10	10	10	10	10	10	10	10	10	10	10	10	10	10	
Kinder 1	10	10	10	10	10	10	10	10	10	10	10	10	10	10	10	10	10	10	10	10	7	8	10	10	10	10	10	10	10	10	10	10	10	10	10	10	10	
Greens Bayou	10	10	10	10	10	10	10	10	10	10	10	10	10	10	10	10	10	10	10	10	7	8	10	10	10	10	10	10	10	10	10	10	10	10	10	10	10	
Shell Crude	10	10	10	10	10	10	10	10	10	10	10	10	10	10	10	10	10	10	10	10	8	8	10	10	10	10	10	10	10	10	10	10	10	10	10	10	10	
Lynchburg Ferries	10	10	10	10	10	10	10	10	10	10	10	10	10	10	10	10	10	10	10	10	8	8	10	10	10	10	10	10	10	10	10	10	10	10	10	10	10	
Exxon 3	10	10	10	10	10	10	10	10	10	10	10	10	10	10	10	10	10	10	9	8	8	8	10	10	10	10	10	10	10	10	10	10	10	10	10	10	10	
Morgans Point	10	10	10	10	10	10	10	10	10	10	10	10	10	10	10	10	10	10	8	8	8	8	10	10	10	10	10	10	10	10	10	10	10	10	10	10	10	10
75/76	10	10	10	10	10	10	10	10	10	10	10	10	10	10	10	10	10	10	10	10	8	8	10	10	10	10	10	10	10	10	10	10	10	10	10	10	10	10
63/64	10	10	10	10	10	10	10	10	10	10	10	10	10	10	10	10	10	10	10	10	10	8	10	10	10	10	10	10	10	10	10	10	10	10	10	10	10	10
51/52	10	10	10	10	10	10	10	10	10	10	10	10	10	10	10	10	10	10	10	10	10	8	10	10	10	10	10	10	10	10	10	10	10	10	10	10	10	10
37/38	10	10	10	10	10	10	10	10	10	10	10	10	10	10	10	10	10	10	10	10	10	10	10	10	10	10	10	10	10	10	10	10	10	10	10	10	10	10
25/26	10	10	10	10	10	10	10	10	10	10	10	10	10	10	10	10	10	10	10	10	10	10	10	10	10	10	10	10	10	10	10	10	10	10	10	10	10	10
11/12	10	10	10	10	10	10	10	10	10	10	10	10	10	10	10	10	10	10	10	10	10	10	10	10	10	10	10	10	10	10	10	10	10	10	10	10	10	10
1 & 2 Bravo	10	10	10	10	10	10	10	10	10	10	10	10	10	10	10	10	10	10	10	10	10	10	10	10	10	10	10	10	10	10	10	10	10	10	10	10	10	10

NOTE: This is automated data that may/may not agree with the official BAM thinking that's found on the daily slides or special visibility report slides. This data should be used as a guide only

Houston Pilots Wind Chart



Sustained wind 13 Knots
Gusts 18 Knots
Wind from the N

Example

WS: 13
G:18
N

Time Knots	Fri 12pm	Fri 1pm	Fri 2pm	Fri 3pm	Fri 4pm	Fri 5pm	Fri 6pm	Fri 7pm	Fri 8pm	Fri 9pm	Fri 10pm	Fri 11pm	Sat 12am	Sat 1am	Sat 2am	Sat 3am	Sat 4am	Sat 5am	Sat 6am	Sat 7am	Sat 8am	Sat 9am	Sat 10am	Sat 11am	Sat 12pm	Sat 1pm	Sat 2pm	Sat 3pm	Sat 4pm	Sat 5pm	Sat 6pm	Sat 7pm	Sat 8pm	Sat 9pm	Sat 10pm	Sat 11pm		
610 Bridge	5	5	4	5	4	5	5	4	3	3	2	2	2	1	2	2	2	2	2	2	2	2	3	4	4	4	4	4	5	5	5	7	5	4	4	3	3	
Kinder 1	ENE	E	ESE	ESE	SE	SSE	SE	SE	SE	SE	SE	ESE	SSE	SSW	SW	NW	NNW	SSW	N	N	NNE	N	N	NNE	ENE	NE	NNE	WNW	SW	N	SSW	ESE	SE	S	NNW	NW		
	5	5	4	5	4	5	5	4	3	3	2	2	2	2	2	2	2	2	2	2	2	2	3	4	4	4	4	5	5	5	7	5	4	4	3	3		
Greens Bayou	ENE	E	ESE	ESE	SE	SSE	SSE	SE	SE	SE	SE	E	SE	WNW	SSW	NW	NNW	W	N	N	NNE	N	N	NE	SE	E	ENE	NNW	WSW	NNE	W	ESE	ESE	SSW	NNW	NW		
	5	5	4	5	4	5	5	4	3	3	2	2	2	2	2	2	2	2	2	2	2	2	4	4	4	4	4	5	5	5	6	5	4	4	3	3		
Shell Crude	ENE	E	ESE	ESE	SE	SSE	SSE	SE	SE	SE	SE	E	SE	WNW	SSW	NW	NNW	W	N	N	NNE	N	N	NE	SE	E	ENE	NNW	WSW	NNE	W	ESE	ESE	SSW	NNW	NW		
	5	5	5	5	5	5	5	4	3	3	2	2	2	2	2	2	2	2	2	2	2	2	3	4	4	4	4	4	5	5	5	6	5	4	3	3		
Lynchburg Ferries	ENE	E	ESE	ESE	SE	SSE	SSE	SE	SE	SE	SE	E	SE	WNW	SSW	NW	NNW	NW	WNW	NW	N	NNE	N	S	W	WSW	SW	NNW	WSW	NNE	SW	SSE	ESE	W	NW	NW		
	5	5	5	5	6	6	6	5	4	3	2	2	2	2	2	2	2	2	2	2	2	2	3	4	5	4	4	4	5	6	6	6	6	5	4	4	4	
Exxon 3	ENE	E	E	ESE	SE	SSE	SSE	SE	SE	SE	ENE	SW	WNW	S	SW	N	ESE	SSE	NNE	NNE	NNE	N	W	WNW	NNE	NNE	N	W	WNW	W	W	SSE	ESE	WNW	NW	NW		
	6	6	6	6	7	7	7	6	5	4	3	3	3	3	3	3	3	3	3	3	3	4	4	5	6	5	6	6	6	6	6	6	6	6	6	6	6	
Morgans Point	E	E	ESE	ESE	SE	SE	SSE	SSE	SE	SE	SE	ENE	SW	WNW	W	NNW	NNW	N	WNW	ENE	ENE	NNE	NNE	ESE	WSW	SW	SSE	S	S	ENE	NE	WNW	SSW	NW	NW	NW		
	6	6	7	7	7	8	8	8	8	6	5	5	5	5	5	5	5	5	5	5	6	6	6	7	7	6	5	5	6	7	8	8	8	8	8	8	8	7
75/76	E	E	ESE	ESE	SE	SE	SSE	SSE	SSE	SSE	SSE	SSE	S	WSW	WNW	NW	NNW	NNW	NNW	NNE	NE	NNE	NNE	NE	ENE	ESE	SE	SE	SSE	ESE	E	NW	W	W	NW	WNW		
	6	6	6	6	6	7	8	8	8	6	5	4	5	5	5	5	5	5	5	6	6	6	7	7	6	5	5	6	7	8	8	8	8	8	8	8	8	7
63/64	E	E	ESE	ESE	SE	SSE	SSE	S	SSE	SSE	S	SSE	S	SSW	SW	WNW	NW	NNW	N	E	NNE	NNE	NNE	NNE	NE	ENE	E	SE	S	SE	ENE	NW	W	W	NW	WNW		
	6	6	6	6	6	7	7	7	5	4	4	4	4	5	5	4	5	5	5	6	6	7	7	7	6	5	5	6	7	8	8	8	8	8	8	8	8	7
51/52	E	E	ESE	ESE	SE	SSE	SSE	SSE	SSE	SSE	SSE	SSE	S	SW	W	NW	NNW	NNW	SSE	NNE	NNE	NNE	NNE	NE	ENE	E	ESE	SE	S	SE	ESE	W	W	WNW	WNW	WNW		
	6	6	6	6	6	6	6	5	3	3	3	3	4	4	4	4	4	4	4	5	6	6	7	7	6	6	5	6	7	8	8	8	8	8	8	8	8	8
37/38	E	E	E	ESE	SE	SSE	SSE	SSE	SSE	SSE	SSE	SSE	SSE	S	SSW	WSW	WNW	NNW	NNW	S	E	NNE	NNE	NNE	ENE	ENE	ENE	E	SE	SSE	ESE	SW	W	WNW	WNW	WNW		
	6	6	6	6	6	6	6	5	4	4	4	4	4	4	4	4	4	4	4	5	6	6	6	6	6	6	6	6	6	6	6	6	6	6	6	6	6	6
25/26	E	E	ESE	ESE	SE	SSE	SSE	SSE	SSE	SSE	SSE	SSE	SSE	S	SSW	W	W	NNW	S	E	NNE	E	NNE	E	NNE	ESE	ENE	NE	E	SE	SSE	ESE	SE	WNW	W	WNW	WNW	
	6	7	6	6	6	6	6	5	4	3	3	3	3	4	4	4	4	4	4	5	6	6	6	6	6	6	6	6	6	6	6	6	6	6	6	6	6	6
11/12	ESE	ESE	ESE	ESE	SE	SE	SSE	SSE	SE	SSE	SSE	SE	SE	SSE	S	WSW	WSW	NW	NW	SSE	SE	NNE	ENE	NNE	S	ENE	ENE	ESE	SSE	SSE	E	NE	WNW	W	WNW	WNW		
	6	6	5	5	5	5	5	5	6	4	4	5	5	5	5	5	5	5	5	6	7	7	7	7	6	5	5	6	7	7	7	7	7	7	7	7	7	7
1 & 2 Bravo	E	E	ESE	E	SE	SSE	SSE	SSE	SSE	SSE	SSE	SE	SE	SSE	S	SW	WSW	WNW	N	NNW	SSE	NNE	NNE	NNE	WNW	NE	E	SSE	S	S	ENE	NE	NW	WNW	WNW	NW		
	8	8	7	6	6	6	6	6	6	5	5	5	5	5	5	6	6	6	6	6	6	6	6	6	6	6	6	6	6	6	6	6	6	6	6	6	6	6

NOTE: This is automated data that may/may not agree with the official BAM thinking that's found on the daily slides. This data should be used as a guide only

Forecast Discussion

Precip: 20% chances for isolated showers/storms in play through 3 PM. 4- 9 PM will hold the best window to see more of hit/miss thunderstorms (40%). Storms are not favored to be severe in nature.

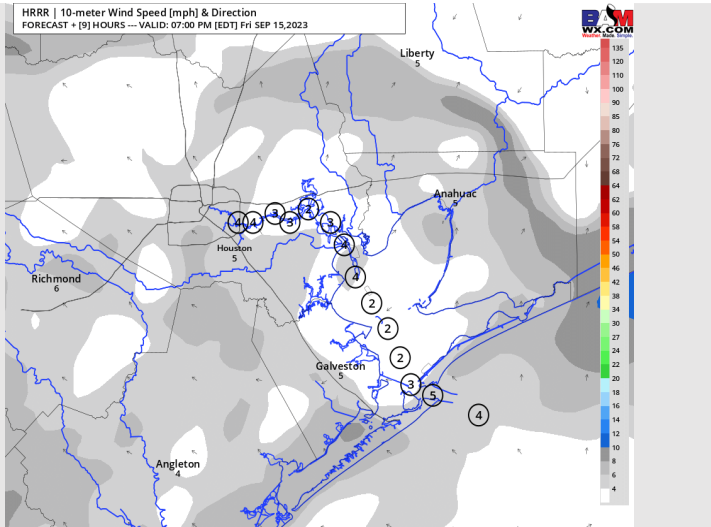
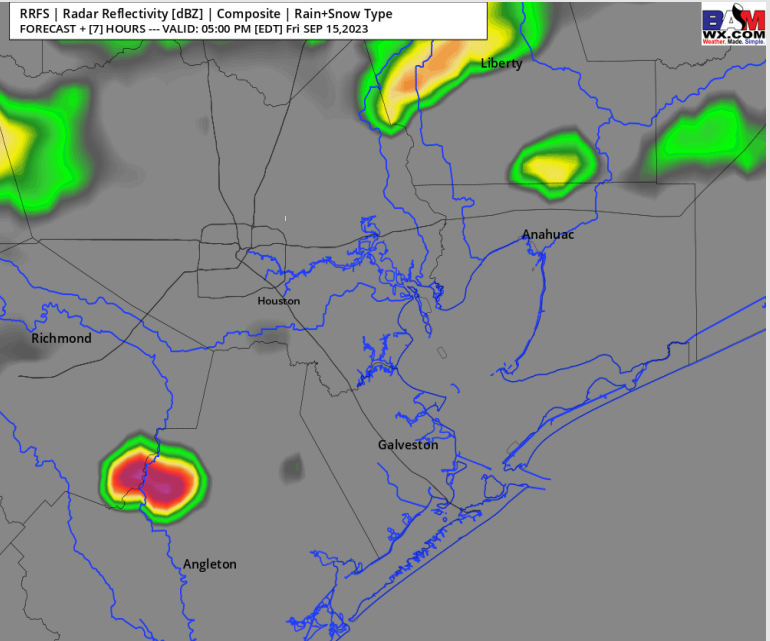
Wind: Winds will continue to be variable into the afternoon due to the light nature of the winds. **N of Morgan's Point:** 2 - 7 kts throughout the entire day. **S of Morgan's Point:** 2 - 8 kts through the entire day.

Thunderstorm activity in the mid afternoon can produce localized gusts to 18 - 23 kts.

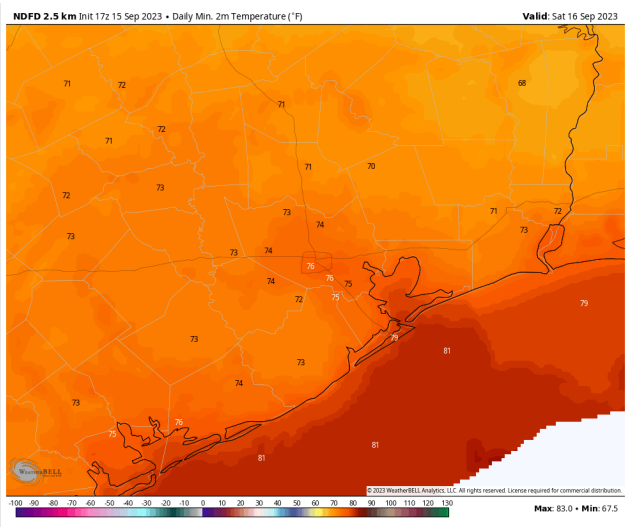
Low Temps: **S of Morgan's Point:** Low 80s F. **N of Morgan's Point:** Mid 70s F.

Visibility: Not anticipating any fog issues at this time.

Precip Image: 4 PM CT



**Wind Speed:
6 PM CT**



**Low Temps
SAT AM**

Forecast Discussion

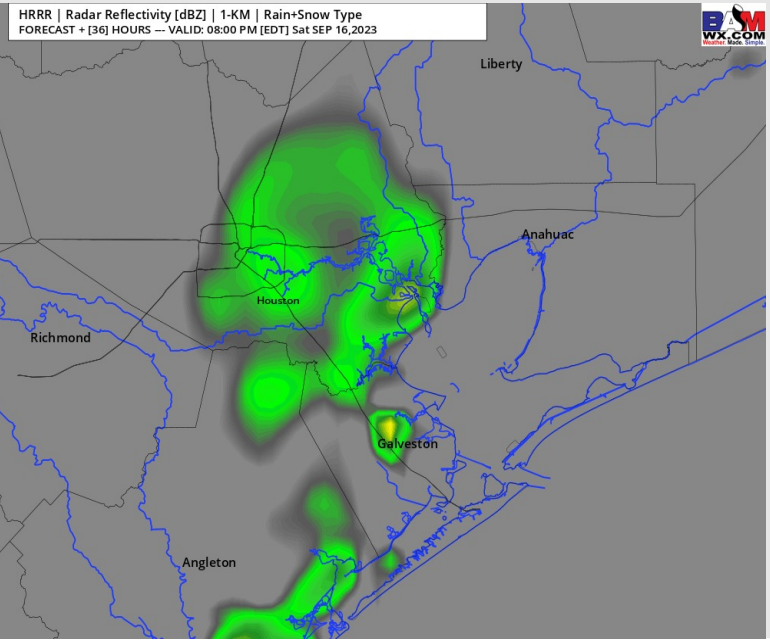
Precip: Pockets of drizzle are possible south of Morgan's point towards 3 AM. Most of any light precip will be confined S of Morgan's point through 4 PM. After 4 PM, hit/miss chances (30%) will be at play for all stations lasting through 8 PM.

Wind: Winds will be very light again on Saturday with generally northerly winds wavering between NW to NE. **N of Morgan's Point:** 1 - 5 kts throughout the day. **S of Morgan's Point:** 2 - 7 kts throughout the day.

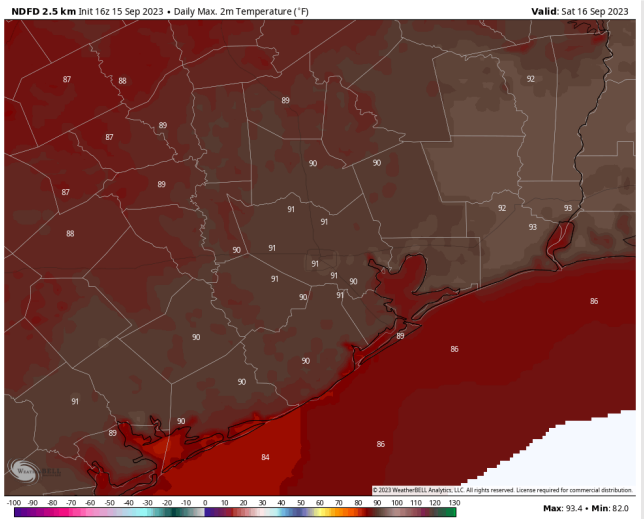
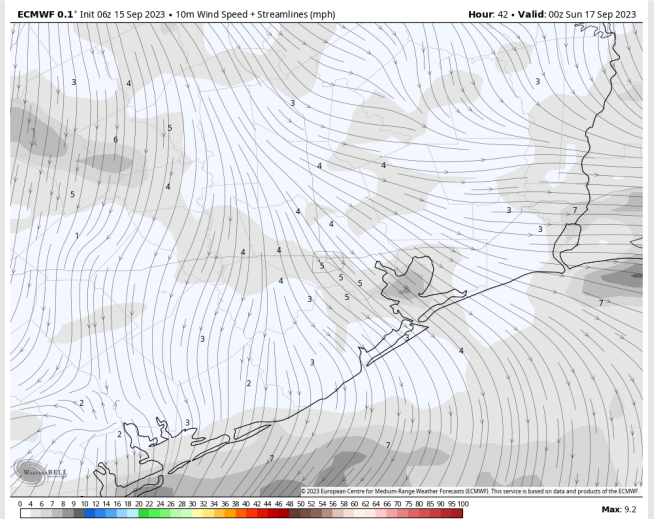
High Temps: **S of Morgan's Point:** Mid to upper 80s F. **N of Morgan's Point:** Lower 90s F.

Visibility: No visibility issues expected.

Precip Image: 7 PM CT



Wind Speed:
7 PM CT



High Temps
Saturday

Houston Pilots: Sun. 9/17/2023



Forecast Discussion

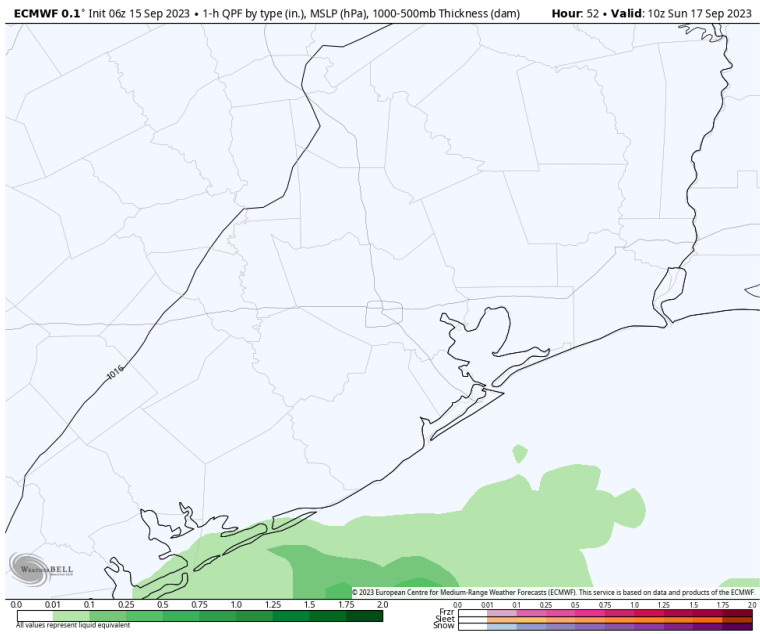
Precip: Isolated shower/drizzle chances (20%) will be in play for the Boarding Station between 4- 9 AM before dry conditions move in again. Favoring dry conditions for all other stations throughout the day.

Wind: Winds out of the NW will shift clockwise out of the NNE by 12 PM and remain from the N to NNE for the rest of the PM. **N of Morgan's Point:** 2 - 6 kts in the early AM will slightly increase to 4 - 9 kts from 11 AM - 7 PM. After 7, winds revert to 2 -6 kts. **S of Morgan's Point:** 5-10 kts through in the early AM. Towards sunrise winds will increase to 6 - 11 kts. Winds will then decrease to 3-8 kts at 1 PM and remain as such for the rest of the day.

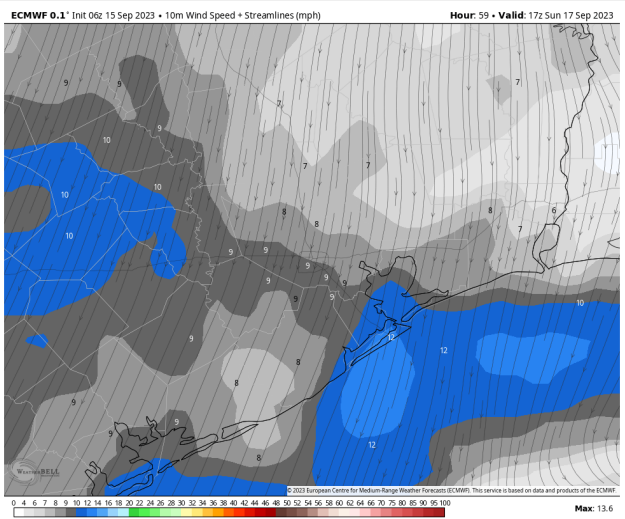
High Temps: **S of Morgan's Point:** Mid to upper 80s F. **N of Morgan's Point:** Lower to mid 90s F.

Visibility: No visibility concerns at this time.

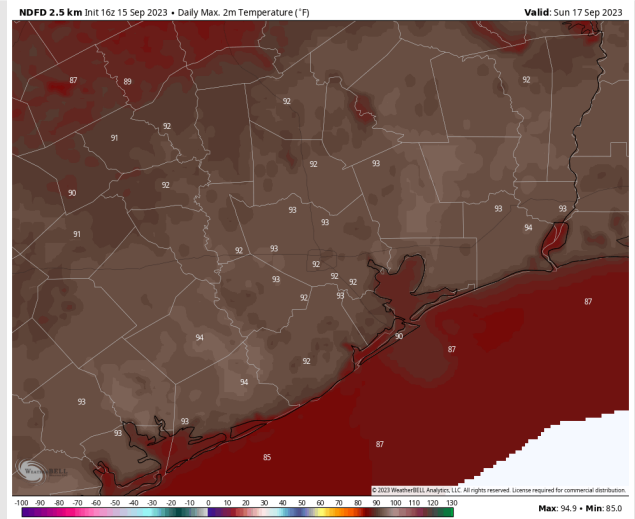
Precip Image: 5 AM CT



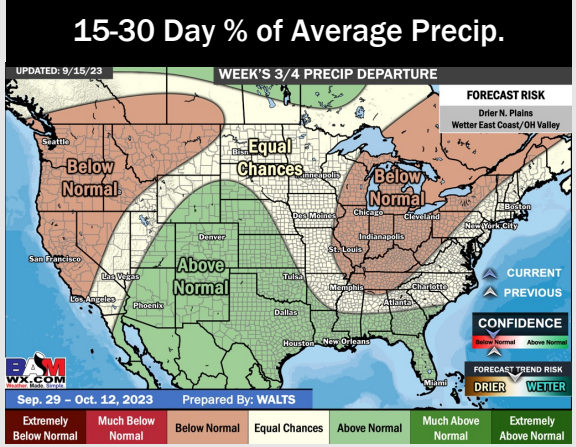
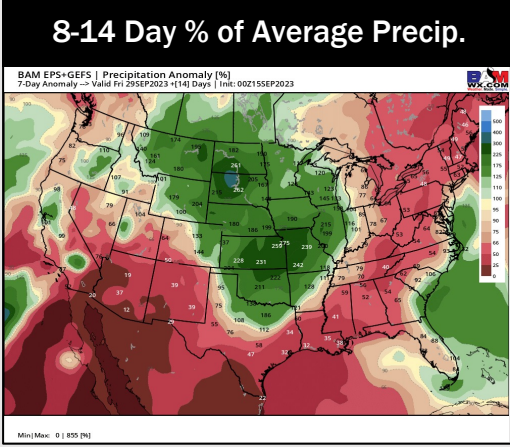
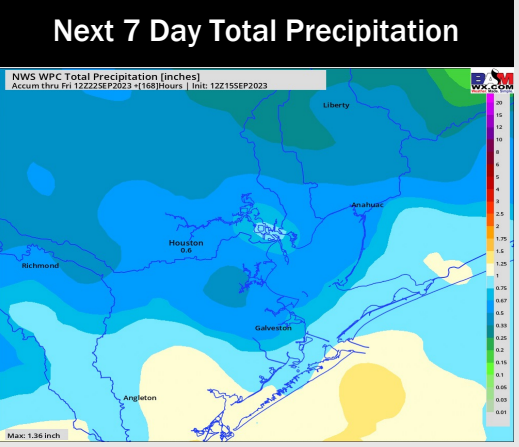
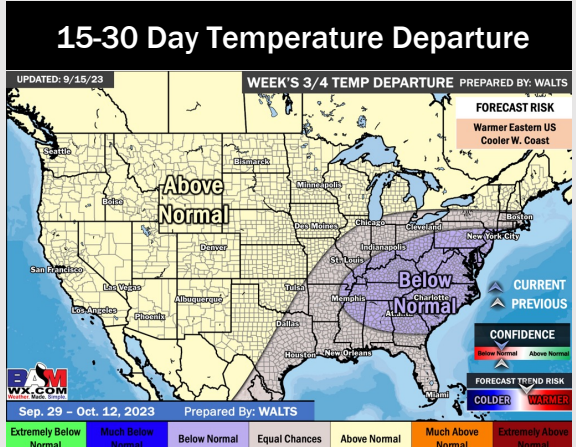
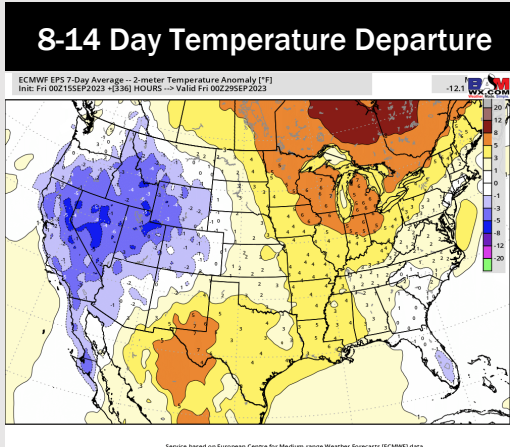
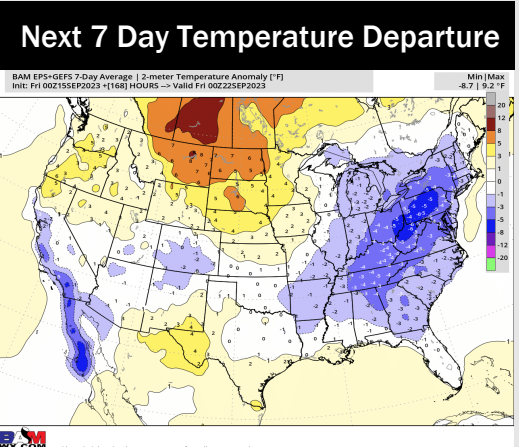
Wind Speed:
12 PM CT



High Temps
Sunday



Houston Pilots: 9/15/23



- Rain chances will be at play everyday over the next few days before coverage quiets down towards Sunday afternoon getting into Monday. Rain chances look to return Tuesday PM. Expecting temperatures to continue to remain slightly above normal.
- Expecting below normal precipitation chances and above normal temperatures for the week 2 timeframe.
- Near normal temperatures and above normal chances for precipitation are favored in the weeks 3/4 timeframe.