

# Houston Pilots Forecast Package



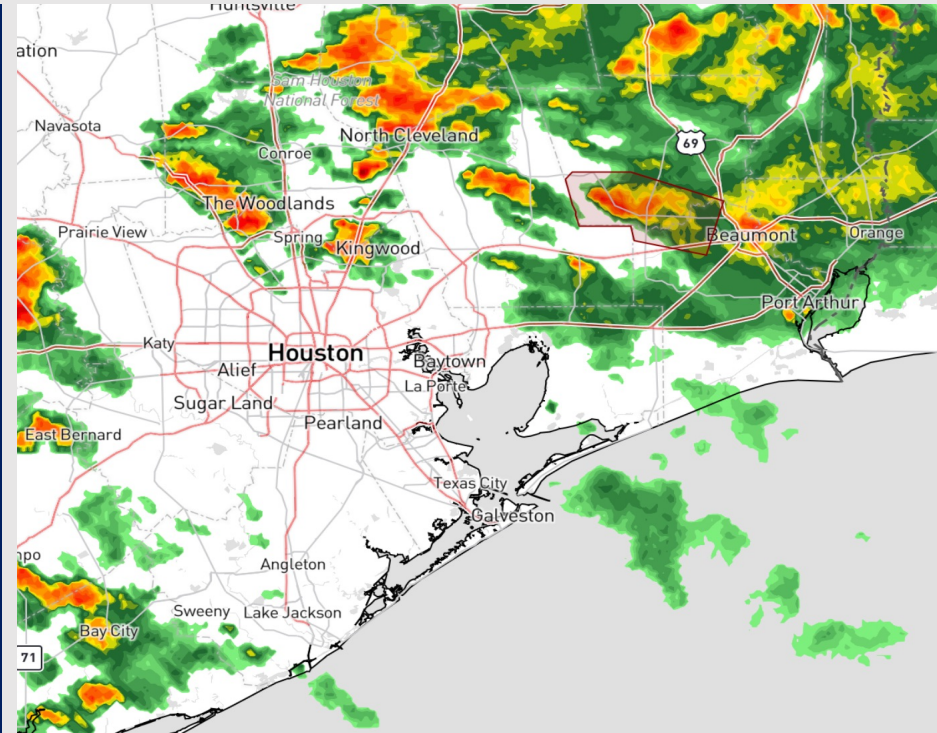
Updated: 1:25 PM CT

Wednesday, September 13, 2023

Forecaster: Tyler Riggles

## Weather Headlines

- Not anticipating tropical development in the Gulf of Mexico over the next 7-10 days. Monitoring Hurricane Lee as it approaches the East coast. This storm will not impact the Gulf.
- Scattered thunderstorms will be at play today and into the first half of the weekend.
- Outside of t-storm related gusts, winds look generally calm over the next 72 hours with speeds remaining below 10 kts.
- Not anticipating any visibility concerns over the next few days.



**Radar/NWS Alerts: 1:12 PM CT**



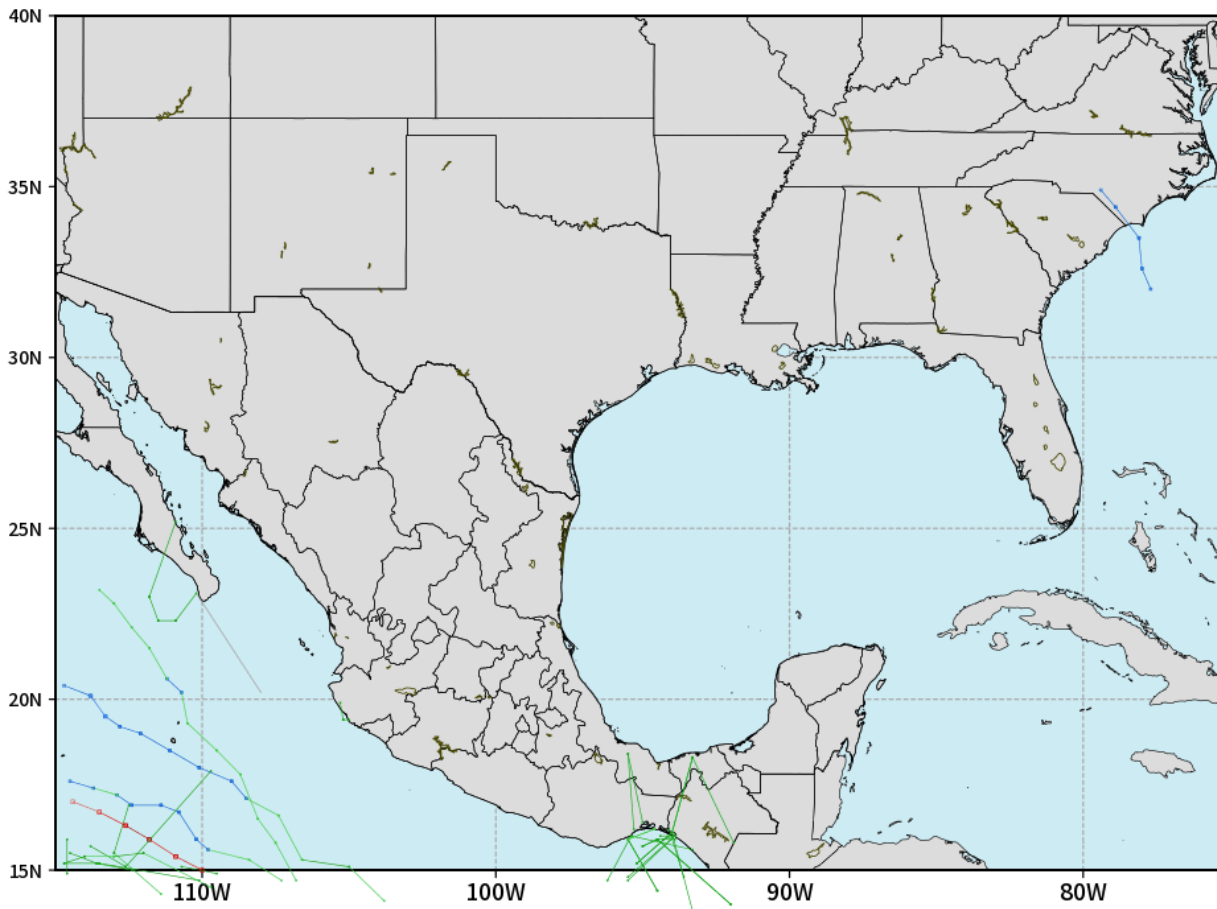
As always, please do not hesitate to reach out to us with any forecast questions via the chat option on the Weather Porthole or our on-call number, **(317)-560-8122** press 1 for forecast questions.

# Houston Pilots Tropical Update

## European Model Next 10 Days Tropical Tracks

ECMWF GULF EPS Cyclone Locations --> Next [10-days]  
INIT: 00Z14SEP2023 --> UNTIL 00Z24SEP2023

o-o ENSEMBLE MEAN  
o-o 1000 - 1010 hPa  
o-o 980 - 999 hPa  
o-o 960 - 979 hPa  
o-o 950 - 959 hPa  
o-o < 950 hPa



[weathermodels.com](http://weathermodels.com)

Not anticipating tropical development in the Gulf of Mexico over the next 7-10 days.

Currently monitoring Hurricane Lee, which will impact parts of New England Saturday.

# Houston Pilots Visibility Chart (miles)



## Forecast Confidence



Time	Thu 12pm	Thu 1pm	Thu 2pm	Thu 3pm	Thu 4pm	Thu 5pm	Thu 6pm	Thu 7pm	Thu 8pm	Thu 9pm	Thu 10pm	Thu 11pm	Fri 12am	Fri 1am	Fri 2am	Fri 3am	Fri 4am	Fri 5am	Fri 6am	Fri 7am	Fri 8am	Fri 9am	Fri 10am	Fri 11am	Fri 12pm	Fri 1pm	Fri 2pm	Fri 3pm	Fri 4pm	Fri 5pm	Fri 6pm	Fri 7pm	Fri 8pm	Fri 9pm	Fri 10pm	Fri 11pm		
610 Bridge	9	10	10	8	8	9	9	10	9	10	9	8	8	8	7	6	7	7	7	6	6	8	9	9	10	9	10	9	8	10	10	10	9	10	9	10	8	
Kinder 1	10	10	10	8	8	9	9	10	9	10	9	8	8	8	7	6	8	8	8	8	7	7	9	10	10	10	10	10	9	9	10	10	10	10	10	10	10	8
Greens Bayou	10	10	8	7	9	9	10	10	10	10	10	9	9	9	8	7	8	8	8	7	7	9	10	10	10	10	10	10	10	10	10	10	10	10	10	10	10	8
Shell Crude	10	10	7	7	10	8	10	10	10	10	10	9	9	8	7	7	8	8	8	8	8	8	10	10	10	10	10	10	10	10	10	10	10	10	10	10	10	9
Lynchburg Ferries	10	10	10	7	10	7	10	10	10	10	10	9	9	8	7	7	8	8	8	8	8	8	9	10	10	10	10	10	10	10	10	10	10	10	10	10	10	8
Exxon 3	10	10	10	7	10	9	10	10	10	10	10	10	10	10	10	10	9	9	9	9	9	8	10	10	10	10	10	10	10	10	10	10	10	10	10	10	10	9
Morgans Point	10	10	10	8	10	10	10	10	10	10	10	10	10	10	10	10	9	9	9	9	9	8	10	10	10	10	10	10	10	10	10	10	10	10	10	10	10	10
75/76	10	10	10	10	10	10	10	10	10	10	10	10	10	10	10	10	9	10	10	10	10	10	10	10	10	10	10	10	10	10	10	10	10	10	10	10	10	10
63/64	10	10	10	10	10	10	10	10	10	10	10	10	10	10	10	10	10	10	10	10	10	10	10	10	10	10	10	10	10	10	10	10	10	10	10	10	10	10
51/52	10	10	10	10	10	10	10	10	10	10	10	10	10	10	10	10	10	10	10	10	10	10	10	10	10	10	10	10	10	10	10	10	10	10	10	10	10	10
37/38	10	10	10	10	10	10	10	10	10	10	10	10	10	10	10	10	10	10	10	10	10	10	10	10	10	10	10	10	10	10	10	10	10	10	10	10	10	10
25/26	10	10	10	10	10	10	10	10	10	10	10	10	10	10	10	10	10	10	10	10	10	10	10	10	10	10	10	10	10	10	10	10	10	10	10	10	10	10
11/12	10	10	10	10	10	10	10	10	10	10	10	10	10	10	10	10	10	10	10	10	10	10	10	10	10	10	10	10	10	10	10	10	10	10	10	10	10	10
1 & 2 Bravo	10	10	10	10	10	10	10	10	10	10	10	10	10	10	10	10	10	10	10	10	10	9	9	9	10	10	10	10	10	10	10	10	10	10	10	10	10	

**NOTE: This is automated data that may/may not agree with the official BAM thinking that's found on the daily slides or special visibility report slides. This data should be used as a guide only**

# Houston Pilots Wind Chart



**Example**

Sustained wind 13 Knots

Gusts 18 Knots

Wind from the N

WS: 13  
G:18  
N

Time Knots	Thu 12pm	Thu 1pm	Thu 2pm	Thu 3pm	Thu 4pm	Thu 5pm	Thu 6pm	Thu 7pm	Thu 8pm	Thu 9pm	Thu 10pm	Thu 11pm	Fri 12am	Fri 1am	Fri 2am	Fri 3am	Fri 4am	Fri 5am	Fri 6am	Fri 7am	Fri 8am	Fri 9am	Fri 10am	Fri 11am	Fri 12pm	Fri 1pm	Fri 2pm	Fri 3pm	Fri 4pm	Fri 5pm	Fri 6pm	Fri 7pm	Fri 8pm	Fri 9pm	Fri 10pm	Fri 11pm		
610 Bridge	4	3	4	5	5	5	5	5	4	4	4	3	2	3	3	3	3	3	3	3	3	3	4	4	4	4	4	4	4	4	4	4	4	4	4	4	3	3
	6	5	6	7	8	8	8	7	7	6	5	4	4	4	4	4	4	4	4	4	4	5	5	6	6	6	6	6	6	6	6	6	6	6	6	6	5	5
	E	ENE	ESE	ENE	ESE	E	E	E	E	E	E	ESE	ENE	ENE	NE	NE	NE	NE	NE	NE	NE	NE	ENE	E	E	ENE	ENE	ENE	ESE	SSW	ENE	E	E	SE	SE	SSE	E	
Kinder 1	4	3	4	5	5	5	5	5	4	4	4	3	2	3	3	3	3	3	3	3	3	3	4	4	4	4	4	4	4	4	4	4	4	4	4	4	3	3
	6	5	6	7	8	8	8	7	7	6	6	5	4	4	4	4	4	4	4	4	4	5	5	6	6	6	6	6	6	6	6	6	6	6	6	6	5	5
	E	ENE	ESE	ENE	E	E	E	E	E	E	E	E	ENE	ENE	NE	NE	NE	NE	NE	NE	NE	ENE	E	E	ENE	ENE	ENE	SE	S	E	E	E	SE	SE	SSE	ESE		
Greens Bayou	4	3	4	5	5	5	5	5	4	4	4	3	3	3	3	3	3	3	3	3	3	3	4	4	4	4	4	4	4	4	4	4	4	4	4	4	3	3
	6	5	6	7	7	7	8	7	7	6	6	5	4	5	4	4	4	4	4	4	4	5	5	6	6	6	6	6	6	6	6	6	6	6	6	6	5	5
	E	E	ESE	ENE	E	E	E	E	E	E	E	E	ENE	ENE	NE	NE	NE	NE	NE	NE	NE	ENE	ENE	E	E	ENE	ENE	E	S	E	ENE	ESE	E	SE	SE	SSE	E	
Shell Crude	4	4	4	5	5	5	5	5	4	4	4	3	3	3	3	3	3	3	3	3	3	3	4	4	4	4	4	4	4	4	4	4	4	4	4	4	3	3
	6	5	6	7	7	7	7	7	7	6	6	5	4	5	4	4	4	4	4	4	4	5	5	6	6	6	6	6	6	6	6	6	6	6	6	6	5	5
	E	E	ESE	E	E	E	E	E	E	E	E	E	ENE	ENE	NE	NE	NE	NE	NE	NE	NE	ENE	ENE	E	E	ENE	ENE	E	SSE	ENE	ENE	ESE	E	SE	SSE	SSE	ESE	
Lynchburg Ferries	4	4	5	5	5	5	6	6	5	4	4	4	3	4	4	4	3	3	3	3	3	4	4	5	5	4	4	4	4	4	4	4	4	4	4	4	4	4
	6	6	6	7	7	7	8	7	7	6	6	5	5	5	5	5	5	4	4	4	4	5	5	6	7	6	6	5	6	7	7	7	7	7	6	6	5	5
	ESE	E	E	E	ENE	E	E	E	E	E	E	E	ENE	ENE	NE	NE	NE	NE	NE	NE	NE	ENE	ENE	ENE	E	ENE	ENE	SE	SE	ENE	E	SE	E	SE	SE	SSE	E	
Exxon 3	5	4	5	5	6	5	6	6	5	5	5	4	4	4	4	4	4	4	4	4	4	4	5	5	5	5	4	4	4	4	4	4	4	4	4	4	4	4
	6	6	7	8	8	7	8	8	7	6	6	6	6	5	6	6	6	6	5	5	6	6	6	6	6	6	6	6	6	6	6	6	6	6	6	6	5	6
	ESE	E	ESE	E	ENE	E	E	E	E	E	E	E	ENE	ENE	NE	NE	NE	NE	NE	NE	NE	ENE	ENE	ENE	E	ENE	ENE	E	S	ESE	ESE	ESE	SSE	ESE	SE	SE	ESE	
Morgans Point	5	5	7	6	6	6	7	7	6	6	6	5	5	5	6	6	6	5	5	6	6	6	6	6	5	5	6	6	6	6	6	6	6	6	6	6	5	5
	7	7	8	8	9	8	8	9	8	7	7	7	7	6	7	7	6	7	6	7	7	7	7	7	6	6	7	8	8	8	8	8	8	8	7	6	6	
	ESE	E	ESE	E	E	E	E	E	E	E	E	ESE	ESE	E	ENE	NE	NE	NE	NE	NE	ENE	ENE	ENE	ENE	E	E	SE	SE	ESE	SE	SSE	ESE	SE	SSE	SSE			
75/76	5	5	8	7	7	7	9	9	8	8	7	7	7	7	7	7	8	8	8	8	8	8	8	7	6	6	5	6	7	8	8	8	8	8	7	6	6	
	7	8	9	9	9	9	10	9	9	8	8	8	8	8	8	8	8	8	8	8	8	8	8	8	7	6	6	5	6	7	8	9	9	9	9	8	7	7
	SE	E	ESE	ENE	E	ENE	E	E	E	E	ESE	ESE	E	E	E	ENE	ENE	ENE	ENE	ENE	ENE	ENE	ENE	ENE	E	E	ENE	E	SE	ESE	SSE	SSE	SE	ESE	SE	SSE	SSW	
63/64	5	5	7	7	7	7	9	9	8	7	7	7	7	7	7	7	8	8	8	8	8	8	7	6	5	5	6	7	8	8	8	8	8	7	6	6	6	
	7	8	9	9	9	9	10	10	9	8	8	8	8	8	8	8	8	8	8	8	8	8	8	7	6	5	5	6	7	8	8	8	8	8	7	6	6	
	SE	ESE	E	ENE	ENE	E	E	E	E	E	ESE	ESE	ESE	E	E	ENE	ENE	ENE	ENE	ENE	ENE	ENE	ENE	E	E	ENE	ESE	ESE	ESE	SSE	SE	ESE	SE	SSE	SE	SSE	S	
51/52	5	5	6	6	7	7	9	9	7	7	7	7	6	7	6	6	7	7	7	7	7	7	7	6	5	5	6	7	8	8	8	8	8	7	6	5	6	
	7	7	8	8	9	8	9	9	8	7	7	7	7	7	7	7	8	8	8	8	8	8	8	7	7	7	7	8	7	8	9	9	8	8	7	6	6	
	SE	SE	E	NE	ENE	E	E	E	E	E	ESE	ESE	ESE	E	ESE	E	ENE	NE	ENE	ENE	ENE	ENE	ENE	E	E	E	ESE	ESE	SE	SSE	S	ESE	SE	SSE	SE	SSE	SSW	
37/38	5	5	5	6	7	6	8	8	7	6	6	6	6	6	5	5	5	5	5	6	6	6	7	7	6	6	6	6	6	6	6	6	6	6	6	5	4	5
	7	7	6	7	8	8	8	9	7	7	7	7	7	6	6	6	6	6	6	6	6	7	7	7	6	6	6	6	6	6	6	6	6	6	6	5	5	
	SSE	SE	SE	ENE	ENE	E	E	E	E	ESE	ESE	ESE	ESE	ESE	ESE	ESE	ENE	NE	ENE	E	ENE	ENE	ENE	E	E	E	ESE	E	SE	SSE	SSE	ESE	E	SE	SE	SSE	S	
25/26	5	5	5	5	7	6	6	7	6	6	5	6	5	4	4	4	4	4	4	4	4	4	4	4	4	4	4	4	4	4	4	4	4	4	4	4	4	4
	7	7	6	6	8	7	7	8	7	7	6	7	7	6	5	5	5	5	5	6	6	6	7	7	7	7	7	8	7	8	8	8	7	6	5	5	6	
	SSE	SSE	SE	E	NE	ENE	E	E	E	ESE	ESE	ESE	ESE	ESE	ESE	ENE	ENE	ENE	E	E	E	E	E	E	E	E	ESE	ENE	SE	SSE	SSE	ESE	E	ESE	SE	SSE		
11/12	6	5	5	5	6	6	6	7	6	6	6	6	6	6	5	4	4	4	4	4	4	4	4	4	4	4	4	4	4	4	4	4	4	4	4	4	4	
	7	7	6	6	7	7	7	8	7	7	7	7	7	6	6	5	5	5	5	5	6	6	6	6	6	6	6	6	6	6	6	6	6	6	6	5	5	
	SSE	SSE	SSE	E	NE	ENE	ENE	ENE	E	ESE	ESE	ESE	SE	SE	SE	SE	E	ENE	E	ENE	E	E	E	E	E	E	ESE	E	SE	SSE	SSE	SSE	ESE	E	ESE	SE	SSE	
1 & 2 Bravo	6	5	4	5	6	7	7	8	7	7	7	7	7	6	5	5	5	5	5	6	6	6	6	6	6	6	6	6	6	6	6	6	6	6	6	6	6	
	7	7	6	6	6	7	7	8	8	8	8	8	7	8	7	6	5	6	7	7	7	7	7	7	7	7	8	7	8	7	6	7	6	7	6	7		
	SSE	SSE	SSE	E	ENE	NE	ENE	ENE	E	ESE	ESE	ESE	SE	SE	SE	SE	E	ENE	E	ENE	E	E	E	E	E	E	ESE	E	SE	SSE	SSE	SSE	ESE	E	ESE	SE	SSE	

**NOTE: This is automated data that may/may not agree with the official BAM thinking that's found on the daily slides. This data should be used as a guide only**

## Forecast Discussion

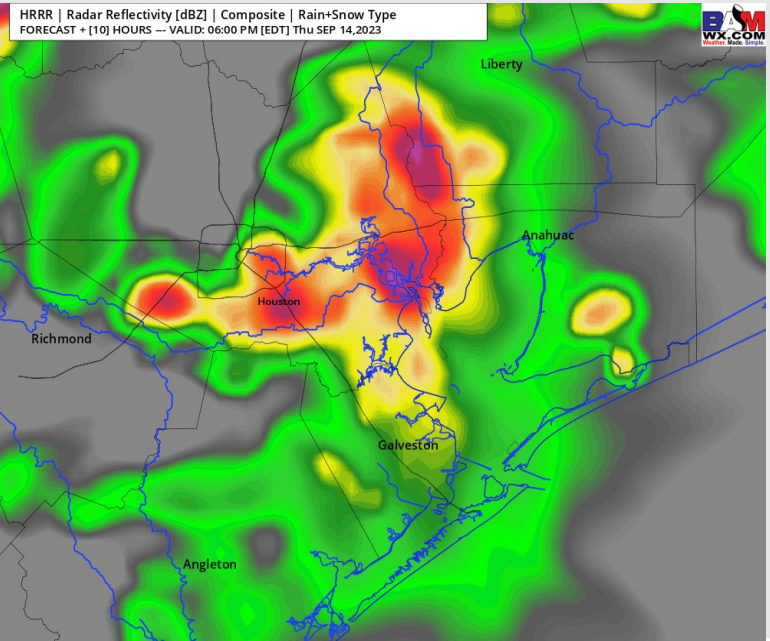
**Precip:** Ongoing scattered to widespread storm chances (70%) will continue until 7 PM. After 7 PM a few isolated showers can linger through 9 PM before conditions dry out for overnight. **Strongest storms can produce gusts of up to 25 - 30 kts in the early PM.**

**Wind:** Winds out of the ENE will shift out of the S/SW with arrival of T-storms by 2 PM before shifting out of the ESE by 9 PM when storms pass. **N of Morgan's Point:** 1-5 kts throughout the entirety of the day aside from Thunderstorm related gusts of around 20 kts (under general thunderstorms). **S of Morgan's Point:** 2 - 7 kts throughout the day. After storms pass near 9 PM, winds will increase slightly to 6 - 11 kts.

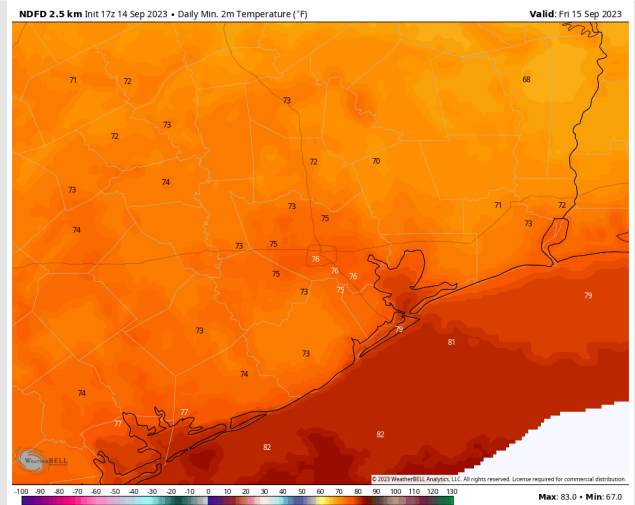
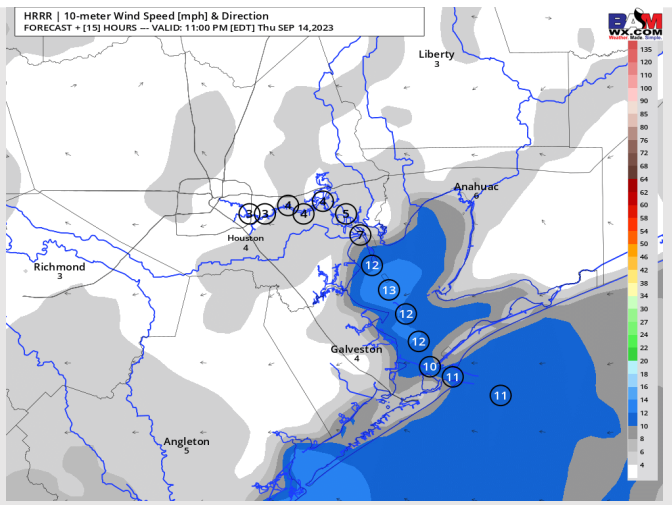
**Low Temps:** **S of Morgan's Point:** Low 80s F. **N of Morgan's Point:** Upper 70s F.

**Visibility:** No visibility concerns at this time.

## Precip Image: 5 PM CT



**Wind Speed:**  
10 PM CT



**Low Temps**  
FRI AM

# Houston Pilots: Fri. 9/15/2023



## Forecast Discussion

**Precip:** The majority of thunderstorm activity will stay to the west of the bay during the AM, with a 20% chance for and isolated shower/storm starting at 5 AM and lasting through 12 PM. Storm chances then increase to 30% from 1- 7 PM before tapering off for the evening.

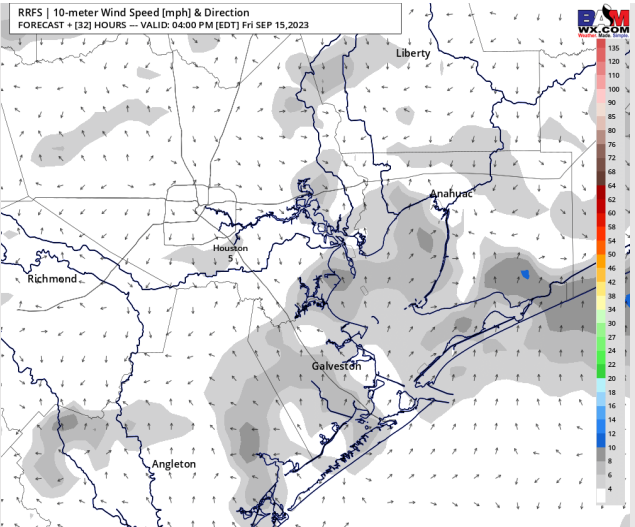
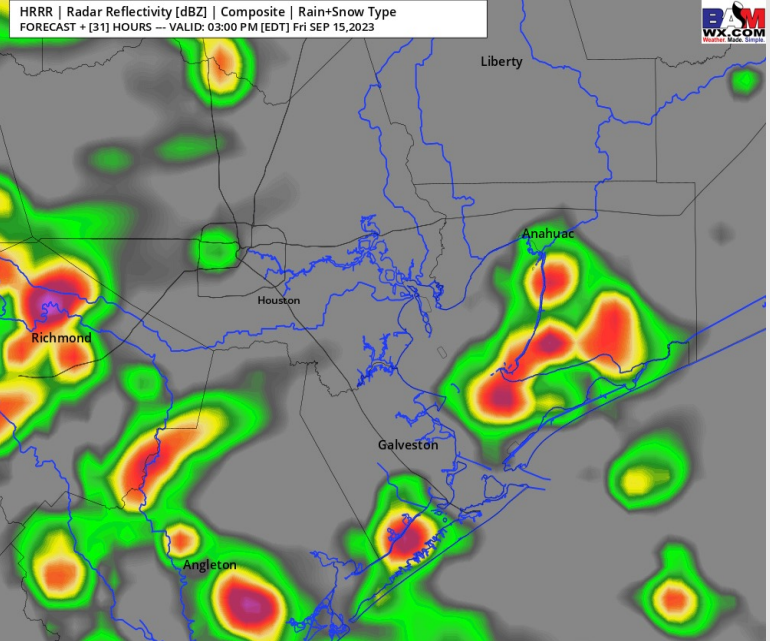
**Wind:** NE winds through 9 AM will become more variable in direction towards the late AM and will continue to be variable into the afternoon due to the light nature of the winds. **N of Morgan's Point:** 2 - 6 kts throughout the entire day. **S of Morgan's Point:** 3 - 8 kts through the entire day.

**Thunderstorm activity in the mid afternoon can produce gusts to 17 - 21 kts.**

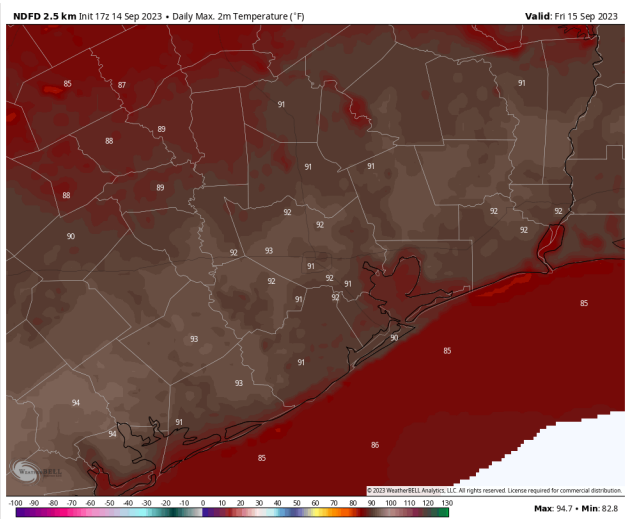
**High Temps:** **S of Morgan's Point:** Lower to mid 80s F. **N of Morgan's Point:** Lower 90s F.

**Visibility:** Not anticipating any fog issues at this time.

## Precip Image: 2 PM CT



**Wind Speed:  
3 PM CT**



**High Temps  
Friday**

# Houston Pilots: Sat. 9/16/2023



## Forecast Discussion

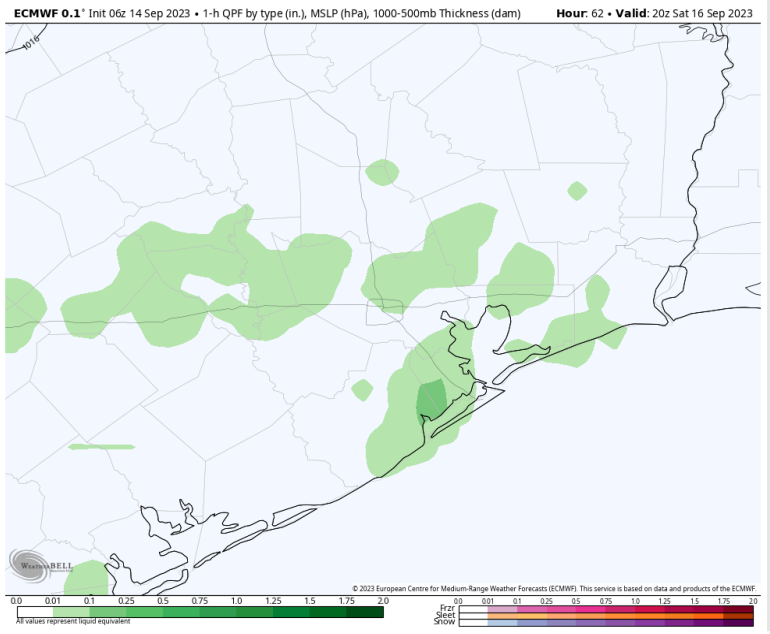
**Precip:** Pockets of drizzle are possible south of Morgan's point towards 5 AM. Most of any light precip will be confined S of Morgan's point through 2 PM. After 2 PM, Isolated chances (30%) will be at play for all stations lasting through 5 PM.

**Wind:** Winds will be very light again on Saturday with generally northerly winds wavering between NW to NE. **N of Morgan's Point:** 2 - 6 kts throughout the day. **S of Morgan's Point:** 2 - 7 kts throughout the day.

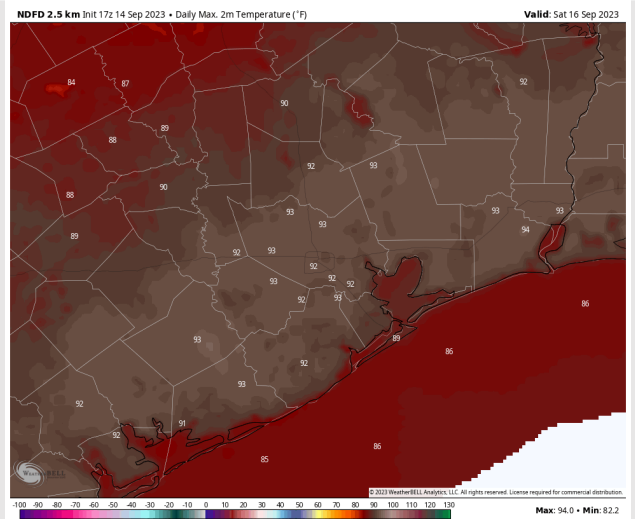
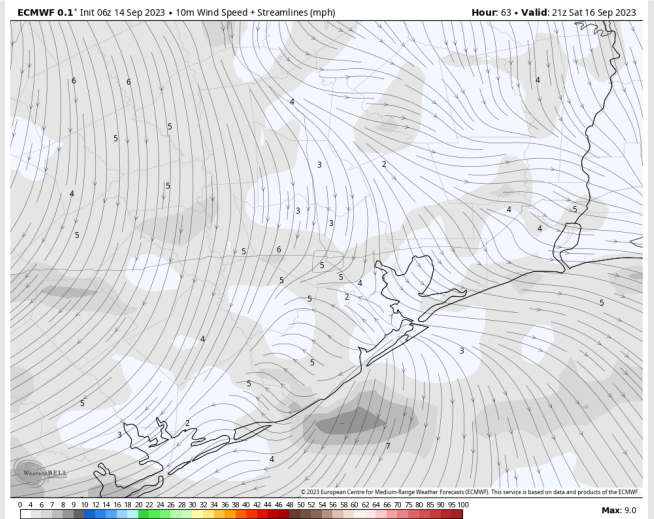
**High Temps:** **S of Morgan's Point:** Mid to upper 80s F. **N of Morgan's Point:** Lower 90s F.

**Visibility:** No visibility issues expected.

## Precip Image: 3 PM CT

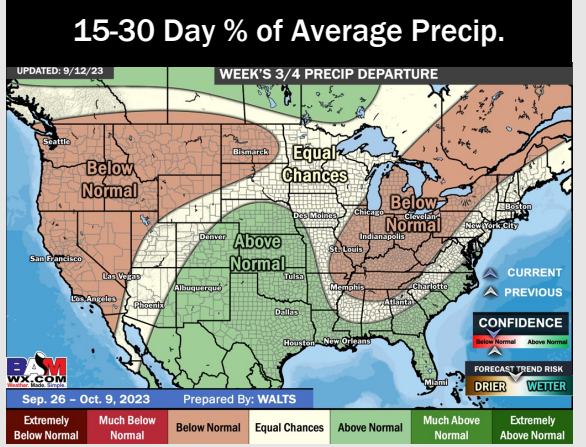
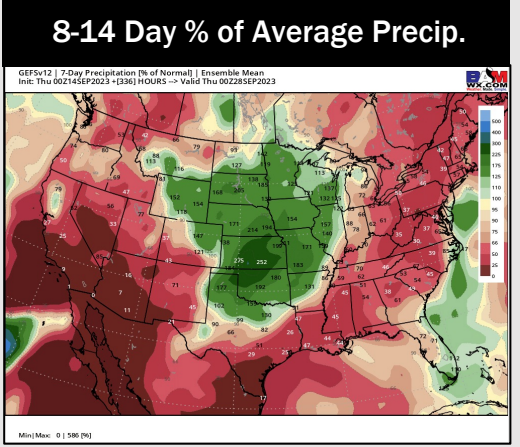
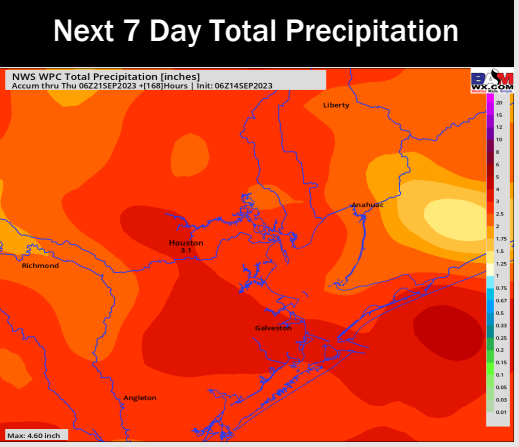
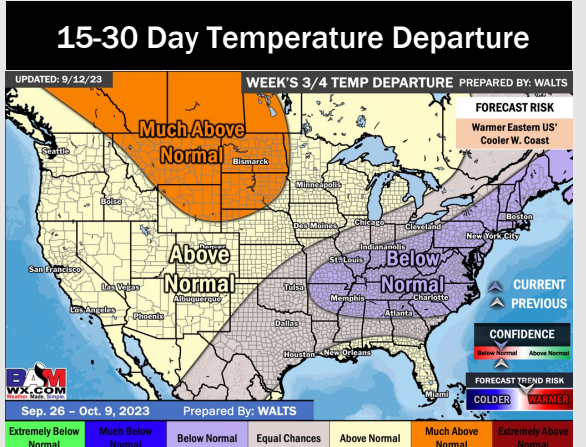
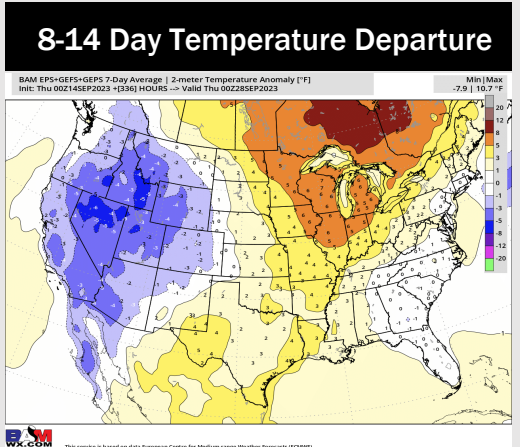
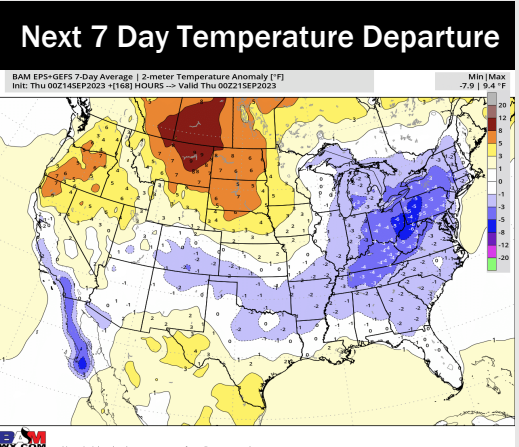


Wind Speed:  
4 PM CT



High Temps  
Saturday

# Houston Pilots: 9/14/23



- Rain chances will be at play everyday over the next few days before coverage quiets down towards Sunday afternoon getting into Monday. Rain chances look to return on Tuesday. Expecting temperatures to continue to remain slightly above normal.
- Expecting below normal precipitation chances and slightly above normal temperatures for the week 2 timeframe.
- Near normal temperatures and above normal chances for precipitation are favored in the weeks 3/4 timeframe.