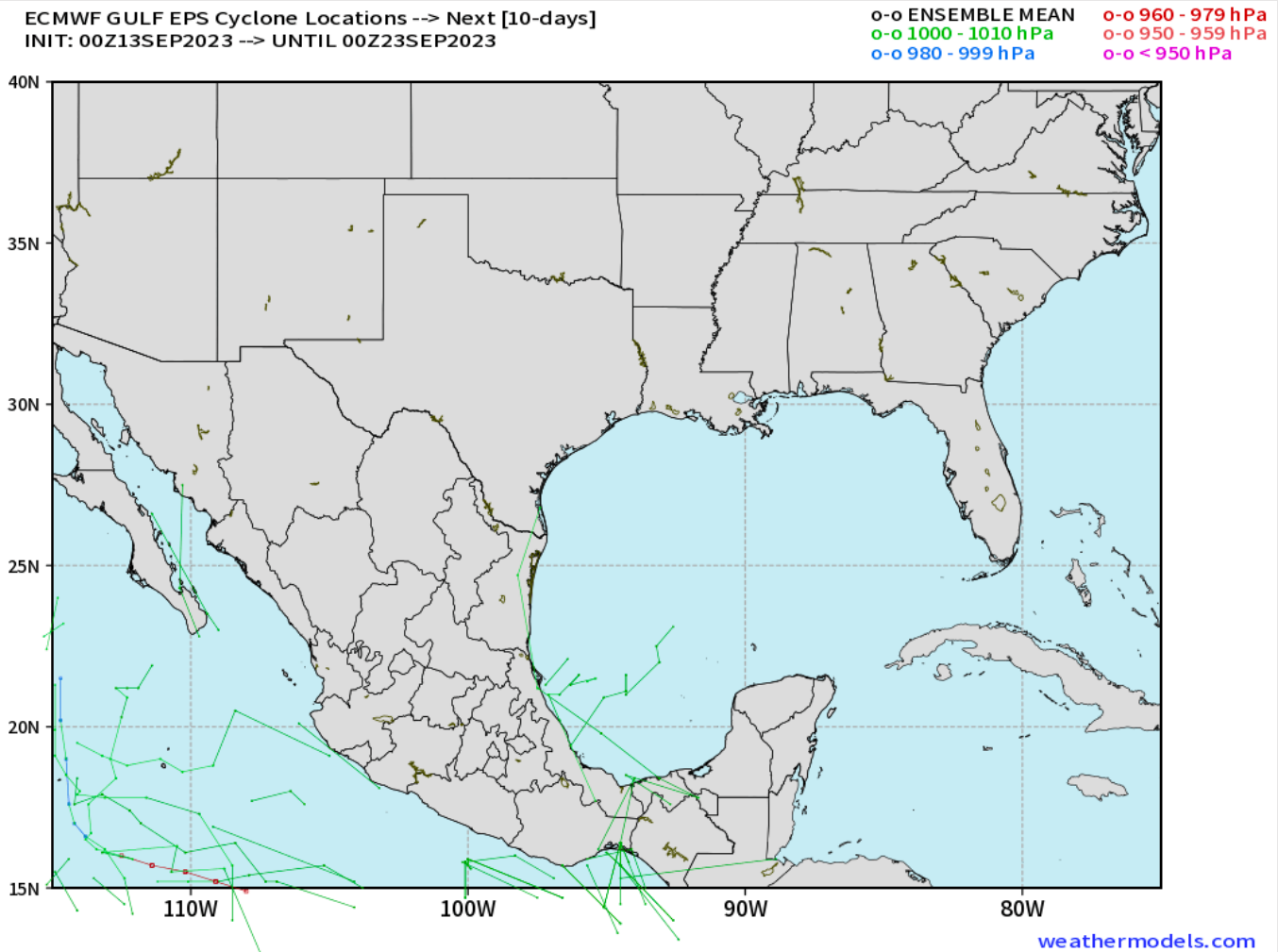




# Houston Pilots Tropical Update

## European Model Next 10 Days Tropical Tracks



**Not anticipating tropical development in the Gulf of Mexico over the next 7-10 days.**

**Currently monitoring Hurricane Lee, which will impact parts of New England Saturday.**

# Houston Pilots Visibility Chart (miles)



Time	Wed 3am	Wed 4am	Wed 5am	Wed 6am	Wed 7am	Wed 8am	Wed 9am	Wed 10am	Wed 11am	Wed 12pm	Wed 1pm	Wed 2pm	Wed 3pm	Wed 4pm	Wed 5pm	Wed 6pm	Wed 7pm	Wed 8pm	Wed 9pm	Wed 10pm	Wed 11pm	Thu 12am	Thu 1am	Thu 2am	Thu 3am	Thu 4am	Thu 5am	Thu 6am	Thu 7am	Thu 8am	Thu 9am	Thu 10am	Thu 11am	Thu 12pm	Thu 1pm	Thu 2pm
610 Bridge	10	10	10	10	10	10	10	10	10	10	10	10	10	10	10	10	10	10	10	10	10	10	10	10	10	10	10	10	10	6	7	7	8	10	8	
Kinder 1	10	10	10	10	10	10	10	10	10	10	10	10	10	10	10	10	10	10	10	10	10	10	10	10	10	10	10	10	6	7	7	8	10	9		
Greens Bayou	10	10	10	10	10	10	10	10	10	10	10	10	10	10	10	10	10	10	10	10	10	10	10	10	10	10	10	10	7	7	8	8	10	10		
Shell Crude	10	10	10	10	10	10	10	10	10	10	10	10	10	10	10	10	10	10	10	10	10	10	10	10	10	10	10	10	8	8	8	8	10	10		
Lynchburg Ferries	10	10	10	10	10	10	10	10	10	10	10	10	10	10	10	10	10	10	10	10	10	10	10	10	10	10	10	10	8	8	8	8	10	10		
Exxon 3	10	10	10	10	10	10	10	10	10	10	10	10	10	10	10	10	10	10	10	10	10	10	10	10	10	10	10	10	8	8	8	9	10	10		
Morgans Point	10	10	10	10	10	10	10	10	10	10	10	10	10	10	10	10	10	10	10	10	10	10	10	10	10	10	10	10	8	8	8	9	10	10		
75/76	10	10	10	10	10	10	10	10	10	10	10	10	10	10	10	10	10	10	10	10	10	10	10	10	10	10	10	10	8	8	9	10	10	10		
63/64	10	10	10	10	10	10	10	10	10	10	10	10	10	10	10	10	10	10	10	10	10	10	10	10	10	10	10	10	8	10	10	10	10	10		
51/52	10	10	10	10	10	10	10	10	10	10	10	10	10	10	10	10	10	10	10	10	10	10	10	10	10	10	10	10	10	10	10	10	10	10	10	
37/38	10	10	10	10	10	10	10	10	10	10	10	10	10	10	10	10	10	10	10	10	10	10	10	10	10	10	10	10	10	10	10	10	10	10	10	
25/26	10	10	10	10	10	10	10	10	10	10	10	10	10	10	10	10	10	10	10	10	10	10	10	10	10	10	10	10	10	10	10	10	10	10	10	10
11/12	10	10	10	10	10	10	10	10	10	10	10	10	10	10	10	10	10	10	10	10	10	10	10	10	10	10	10	10	10	10	10	10	10	10	10	10
1 & 2 Bravo	10	10	10	10	10	10	10	10	10	10	10	10	10	10	10	10	10	10	10	10	10	10	10	10	10	10	10	9	9	9	9	9	9	9	9	9

**NOTE: This is automated data that may/may not agree with the official BAM thinking that's found on the daily slides or special visibility report slides. This data should be used as a guide only**

# Houston Pilots Wind Chart



## Forecast Confidence



## Example

Sustained wind 13 Knots  
Gusts 18 Knots  
Wind from the N

WS: 13  
G:18  
N

Time Knots	Wed 3am	Wed 4am	Wed 5am	Wed 6am	Wed 7am	Wed 8am	Wed 9am	Wed 10am	Wed 11am	Wed 12pm	Wed 1pm	Wed 2pm	Wed 3pm	Wed 4pm	Wed 5pm	Wed 6pm	Wed 7pm	Wed 8pm	Wed 9pm	Wed 10pm	Wed 11pm	Thu 12am	Thu 1am	Thu 2am	Thu 3am	Thu 4am	Thu 5am	Thu 6am	Thu 7am	Thu 8am	Thu 9am	Thu 10am	Thu 11am	Thu 12pm	Thu 1pm	Thu 2pm	
<b>610 Bridge</b>	3	2	2	2	2	2	3	4	4	4	4	4	5	5	5	6	6	6	5	4	4	3	3	3	2	2	2	2	2	2	3	4	4	4	4	4	4
<b>Kinder 1</b>	3	2	2	2	2	2	3	4	4	3	3	4	5	5	6	6	6	4	4	4	3	3	3	2	2	2	2	2	2	3	4	4	4	4	4	4	4
<b>Greens Bayou</b>	3	2	2	1	2	2	3	4	3	3	3	4	5	5	6	6	6	4	4	3	3	3	3	2	2	2	2	2	2	2	3	4	4	4	4	4	4
<b>Shell Crude</b>	3	3	2	2	2	2	4	4	3	3	3	4	5	6	6	6	6	4	4	3	3	3	3	3	3	3	2	2	2	3	4	4	4	4	4	4	4
<b>Lynchburg Ferries</b>	3	3	2	2	2	2	4	4	3	3	3	4	5	6	6	6	6	5	5	4	3	3	3	3	3	2	2	2	3	4	4	4	4	4	4	4	4
<b>Exxon 3</b>	4	4	3	2	2	3	4	4	4	3	4	5	6	7	7	7	7	5	5	4	4	4	4	4	4	4	3	3	4	4	4	4	4	4	4	4	4
<b>Morgans Point</b>	5	4	4	3	3	3	4	4	4	4	4	5	6	7	8	8	8	6	6	5	5	5	5	4	4	4	4	4	4	4	4	4	4	4	4	4	4
<b>75/76</b>	6	5	5	4	4	4	5	4	4	4	4	5	6	7	8	8	8	6	6	5	5	5	5	4	4	4	4	4	4	4	4	4	4	4	4	4	4
<b>63/64</b>	6	5	5	5	4	4	5	4	4	4	4	5	6	8	9	10	10	11	8	7	7	6	7	5	5	5	5	4	6	7	6	7	7	6	6	5	5
<b>51/52</b>	5	5	5	4	3	4	5	4	4	4	5	6	7	9	10	10	10	8	6	6	6	6	5	5	4	4	4	5	6	5	6	7	6	7	7	7	8
<b>37/38</b>	5	4	4	4	3	4	4	4	4	4	4	5	6	7	9	9	8	7	5	5	5	5	4	4	4	4	4	3	4	5	5	6	6	6	6	5	6
<b>25/26</b>	6	5	4	4	4	4	5	5	6	7	8	9	10	10	9	8	7	5	6	6	6	5	6	4	4	4	4	4	5	6	7	7	7	7	7	8	8
<b>11/12</b>	7	6	5	4	4	4	5	5	5	5	7	9	9	9	9	8	7	6	4	4	5	4	5	4	4	3	3	5	4	5	6	6	6	6	6	6	6
<b>1 &amp; 2 Bravo</b>	8	7	6	6	5	5	5	5	4	4	4	6	7	8	8	7	7	5	5	6	5	6	5	6	5	5	4	5	6	7	8	8	8	8	8	8	8

NOTE: This is automated data that may/may not agree with the official BAM thinking that's found on the daily slides. This data should be used as a guide only



## Forecast Discussion

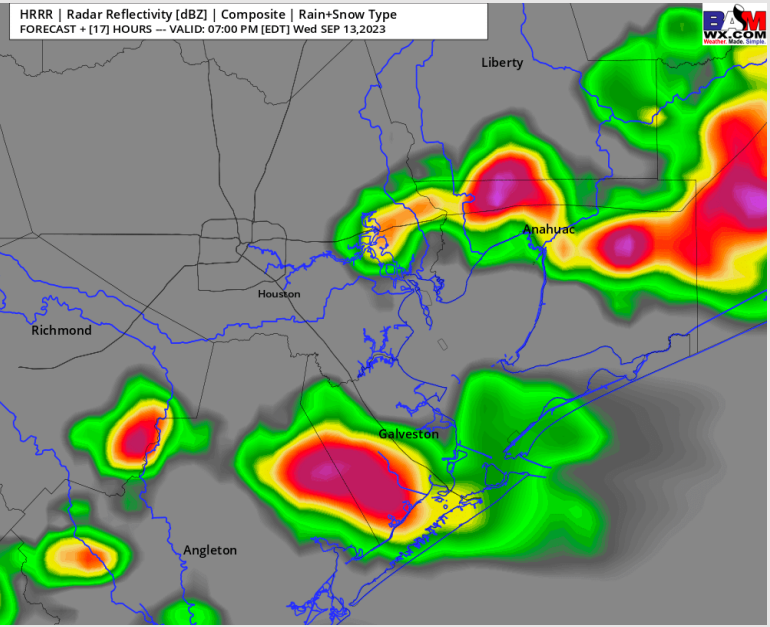
**Precip:** Aside from a stray isolated shower/thunderstorm at the Boarding Station from 8 -11 AM, favoring dry conditions otherwise for the AM hours. **Better thunderstorm chances will work in towards 4 PM - 11 PM with the greatest coverage occurring from 5 - 8 PM. Thunderstorm chances will be roughly 50-60% in the afternoon. A low-end severe risk will be present with these storms with the main threat being gusty winds of up to 40 - 48 kts in addition to small hail.**

**Wind:** SW winds during the AM hours will veer from the S by 2 PM and remain as such for the rest of the afternoon. Pending thunderstorm activity in the PM, winds can briefly shift from the NE. **N of Morgan's Point:** Near-calm winds of 2 - 5 kts in the AM will slightly increase to 3 - 7 kts by 2 PM. **S of Morgan's Point:** 2-6 kts throughout the morning hours will increase to 5 - 10 kts towards 3 PM.

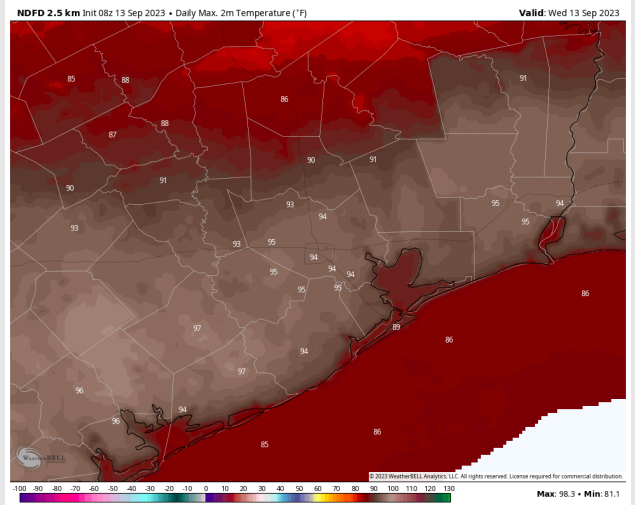
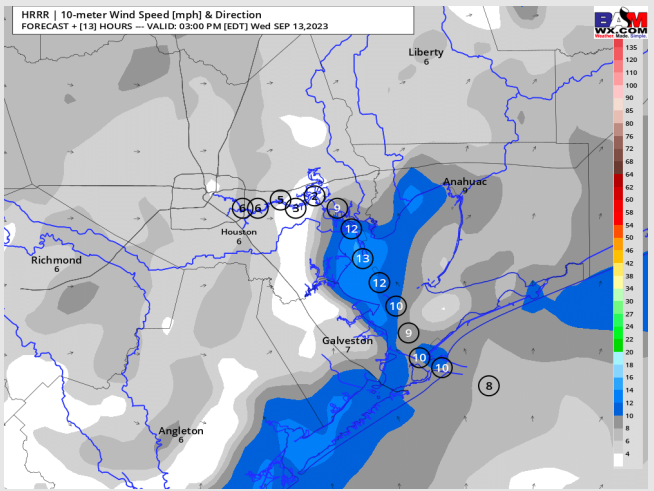
**High Temps:** **S of Morgan's Point:** Mid 80s F **N of Morgan's Point:** Mid 90s F

**Visibility:** No visibility issues expected.

## Precip Image: 6 PM CT



**Wind Speed:  
2 PM CT**



**High Temps  
Today**

# Houston Pilots: Thu. 9/14/2023



## Forecast Discussion

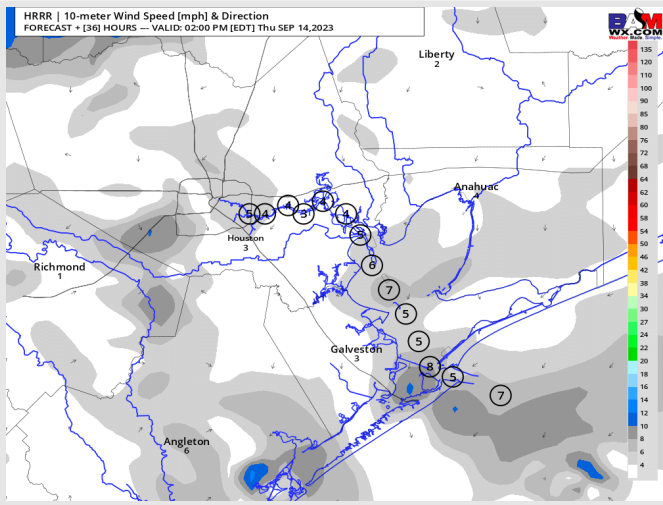
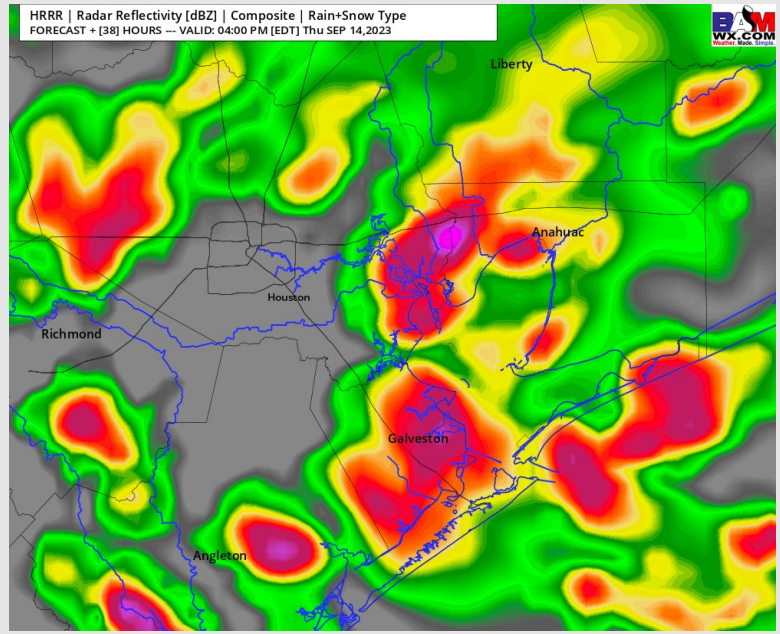
**Precip: Monitoring** 30-40% chances for hit/miss showers/storms move into the area from 9 AM - 11 AM. After 11 AM, favoring a brief lull in coverage before storm chances increase again near 1 PM. From 2 PM - 8 PM favoring scattered to widespread coverage (60-70%) of thunderstorms. Storms will taper off by 9 PM to the SW. **A stronger storm cannot be ruled out again in the afternoon for a wind gust up to 35 - 40 kts.**

**Wind: Near calm winds will generally** be out of the E before shifting to be out of the ESE by 4 PM and remaining that way for the rest of the day. **N of Morgan's Point: 1-5 kts** throughout the entirety of the day aside from Thunderstorm related gusts of around 20 kts (under general thunderstorms). **S of Morgan's Point: 2 - 7 kts** throughout the day. After storms pass near 9 PM, winds will increase slightly to 6 - 11 kts.

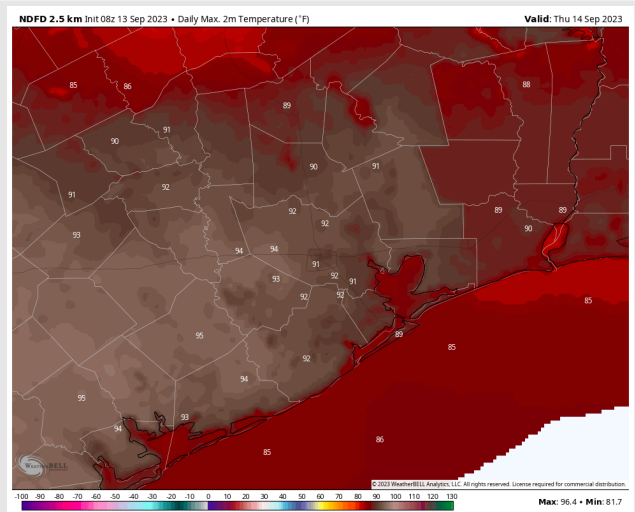
**High Temps: S of Morgan's Point: Mid 80s F. N of Morgan's Point: Mid/Upper 90s F.**

**Visibility: No visibility concerns at this time.**

## Precip Image: 3 PM CT



**Wind Speed:  
2 PM CT**



**High Temps  
Thursday**

# Houston Pilots: Fri. 9/15/2023



## Forecast Discussion

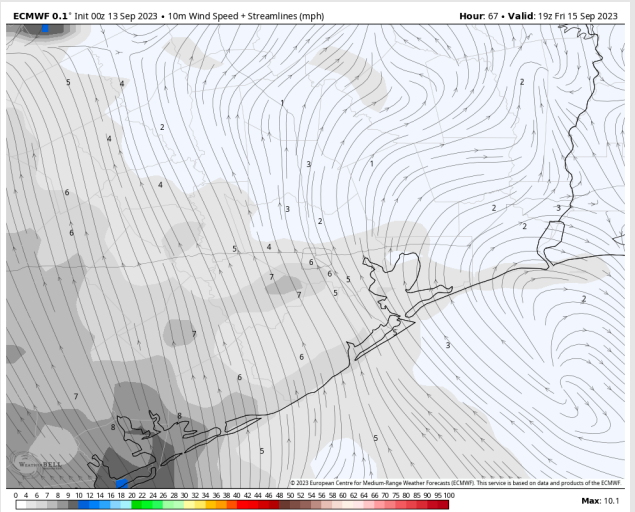
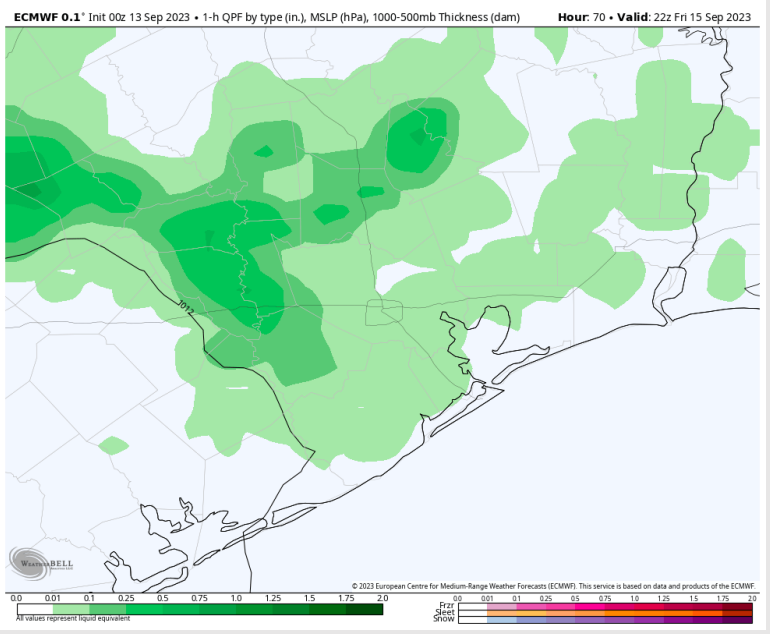
**Precip:** The majority of thunderstorm activity will stay to the west of the bay during the AM, with a 20% chance for and isolated shower/storm starting at 3 AM and lasting through 2 PM. Storm chances then increase to 30% from 4 - 7 PM before tapering off for the evening.

**Wind:** NE winds through 9 AM will veer clockwise from the SE by 2 PM and will then become variable towards 6 PM. **N of Morgan's Point:** 2-6 kts throughout the entire day. **S of Morgan's Point:** 2 - 7 kts through the entire day. **Thunderstorm activity in the mid afternoon can produce gusts to 18 - 23 kts.**

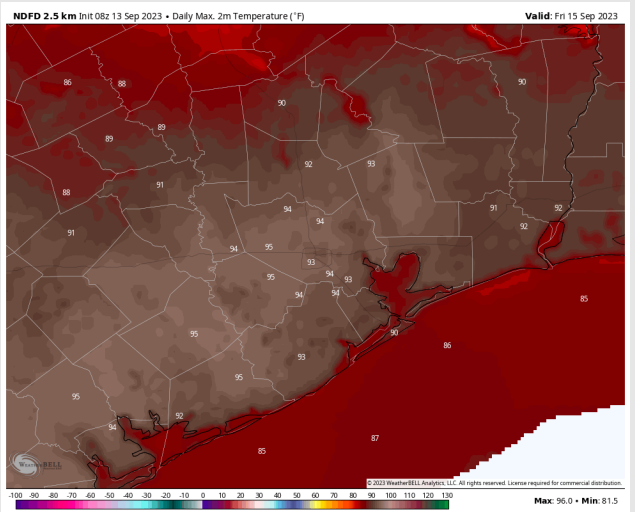
**High Temps:** **S of Morgan's Point:** Lower 80 to mid 80s F. **N of Morgan's Point:** Mid 90s F.

**Visibility:** Not anticipating any fog issues at this time.

## Precip Image: 5 PM CT



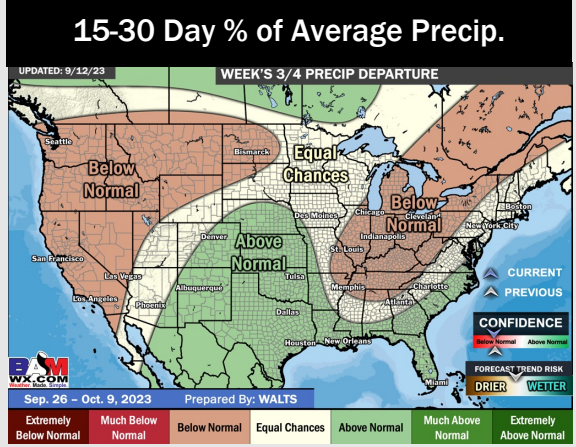
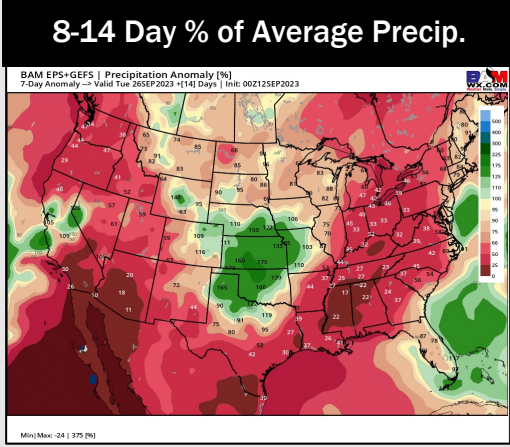
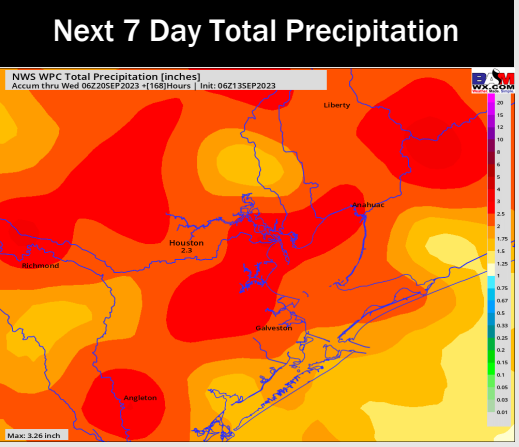
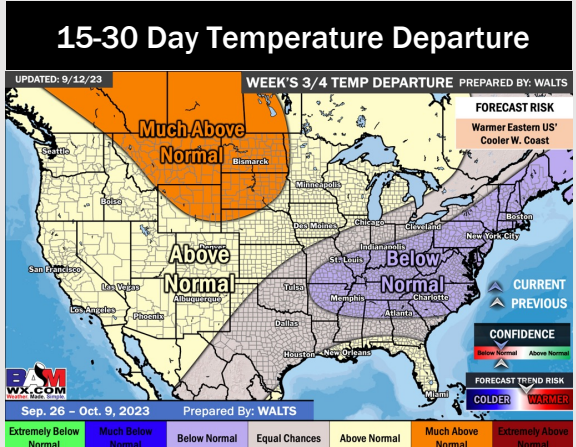
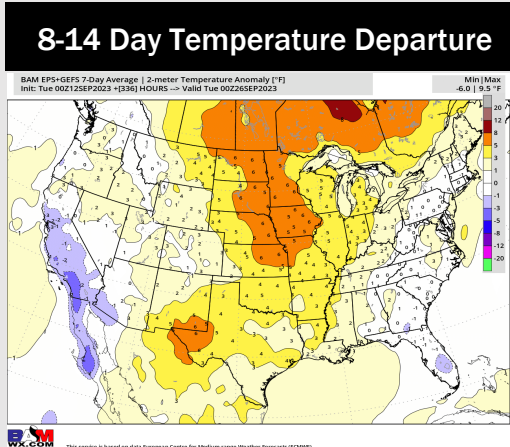
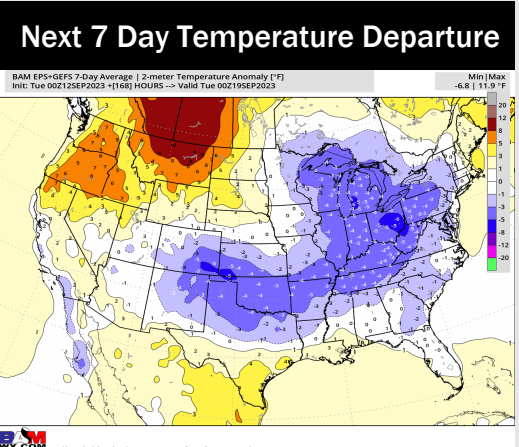
Wind Speed:  
2 PM CT



High Temps  
Friday



# Houston Pilots: 9/12/23



- Rain chances will be at play everyday over the next 5 days before coverage quiets down towards Sunday afternoon. Expecting temperatures to continue to remain slightly above normal.
- Expecting below normal precipitation chances and slightly above normal temperatures for the week 2 timeframe.
- Near normal temperatures and above normal chances for precipitation are favored in the weeks 3/4 timeframe.